

User'S Manual



USER'S MANUAL OF THE BLUETOOTH KEYBOARD CASE

FCC ID: PD8X9001

Keyboard Case

Operation Instruction of the iPad Keyboard Case:

1、 Place the case to a comfortable position.

This Keyboard can be 360° rotated with multi-view angle available.

2、 You will find the On/Off switch and Bluetooth Button on the right bottom side of the keyboard.



*The built-in lithium battery will support 120 hours continuously typing when fully charged. Please charge the keyboard with the USB cable included.

*Turn the power button on and you can start using the keyboard.

A: Capital light

* When the letters are locked in Capital mode, this white light will be on

B: Power light

* When the keyboard is battery low, the yellow light will blink.

* When the keyboard is being charged, this light will light on in red color.

* When the keyboard battery is fully charged, this light will light on in green color.

C: Bluetooth light

* When the Bluetooth button is activated and during pairing between the keyboard and your iPad, this light will blink until the keyboard and iPad is successfully paired.

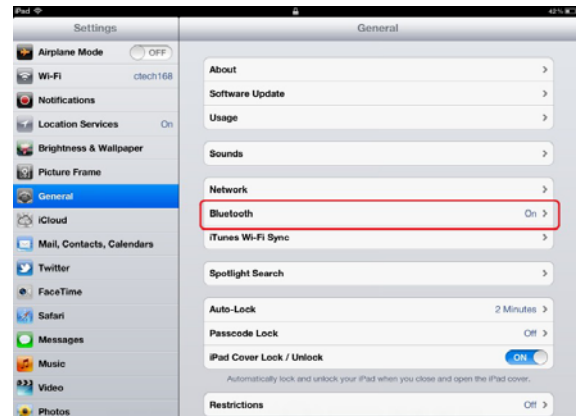
Keyboard Case

Step III Pair the keyboard to your iPad

Press the Bluetooth key to send the Bluetooth signal.

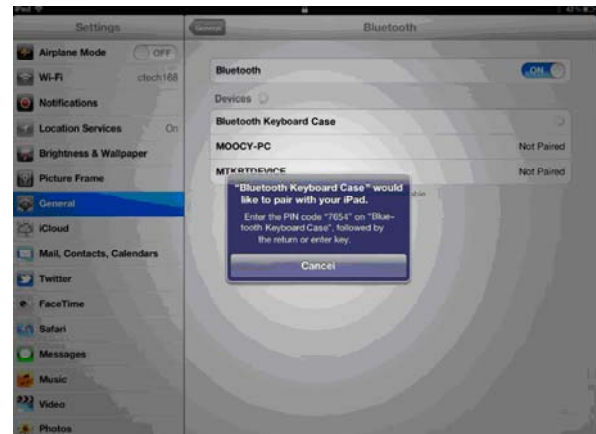
Turn your iPad on and tap “Settings”---“General”---“Bluetooth”

Slide the Bluetooth to “On” and your iPad will start to search for Bluetooth devices



When it finds the “Bluetooth Keyboard Case”, tap it and begin pairing.

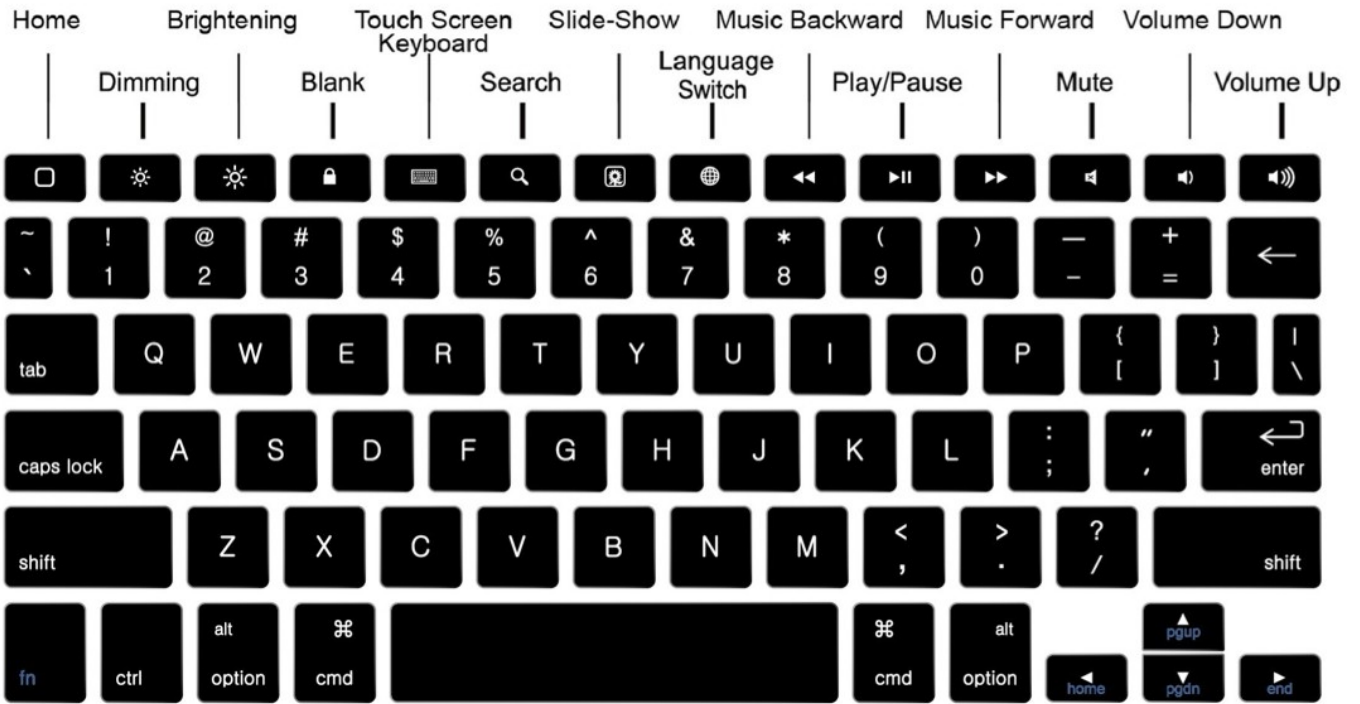
Enter the password showed on the blue window and press the “Enter” key on the keyboard



Step III is only needed for the initial setup. After your first successful connection, the keyboard will connect automatically to your iPad when you turn the power on. You may need to tap on the keys to wake it up from hibernate mode.

Keyboard Case

About the Keyboard



⌘	+		Language Switch
⌘	+	C	Copy
⌘	+	V	Paste
⌘	+	X	Cut
⌘	+	Z	Redo
⌘	+		To the top of the text
⌘	+		To the end of the text
⌘	+		Delete the whole line
Shift	+		Select text rightward
Shift	+		Select text leftward
Shift	+		Select text upward
Shift	+		Select text downward

Keyboard Case

Technical Specification Of The Product:

Bluetooth Specification: Version 3.0

Operation Current: <1.5mA

Standby Current: <0.5mA

Operation Voltage: 3.7V

Charging Voltage: 110-240V

Battery Type: Lithium Battery

Charging period: 2hours (For the first time, please charge for 12 hours)

Trouble Shooting:

If you are unable to connect the keyboard to your iPad, please try the following:

- Check if the battery is low. When the battery is low, some keys will react slowly and even won't work. Then, you should charge the battery.
- Check the power switch, make sure it is on. When it is on, the power light on the right bottom of the keyboard will flash for two seconds
- Restart the Bluetooth switch, make sure your iPad can find this device
- Ensure the password for pairing is correct.

IMPORTANT REGULATORY INFORMATION

This device complies with Part 15 of the FCC Rules: Operation is subject to the following two conditions:

1. This device may not cause harmful interference and
2. This device must accept any interference that is received, including any interference that may cause undesired operation.

WARNING:

Changes or modifications to this unit not expressly approved by the party responsible for compliance could void the user's authority to operate the equipment.