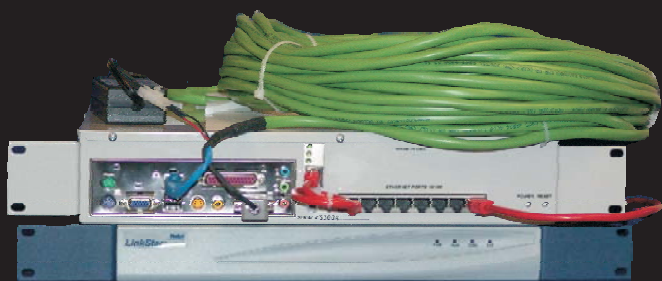


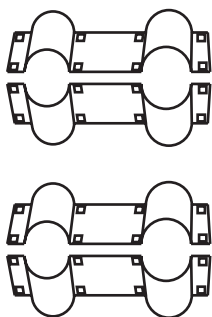


DUAL RADIO HOT SPOT & SERVER **QUICK**START GUIDE

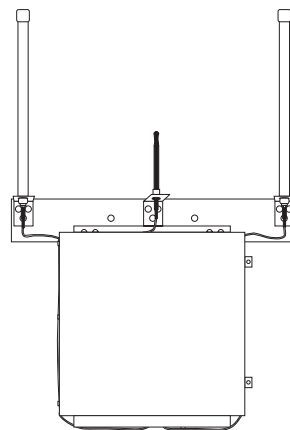


 **CADCO SYSTEMS**

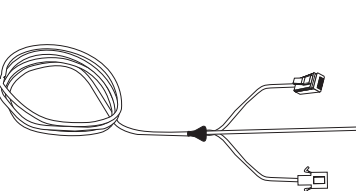
1. Inventory



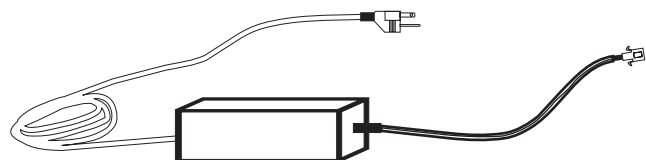
- 5 ft. Mast Pipe
- 4 Clamps
- Bag of Bolts



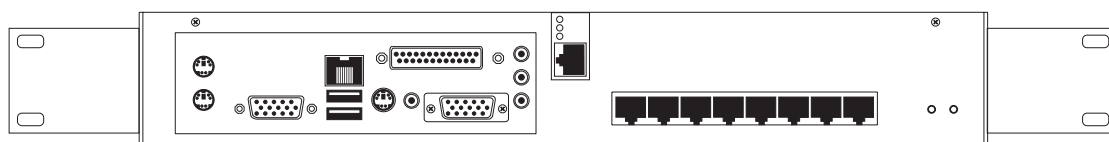
- Access Point



- Ethernet
- RS232
- Power



- AC Adapter



- Server

Note: Verify that all equipment has been recieved and is of the correct type.

2.

Installation



Step 1. Make sure you have all of the appropriate tools, wrench & socket and screwdriver.



Step 2. Position one set of clamps around the center satellite pole. Partially screw in eight of the bolts. Leave space to slide in the adjacent pole.



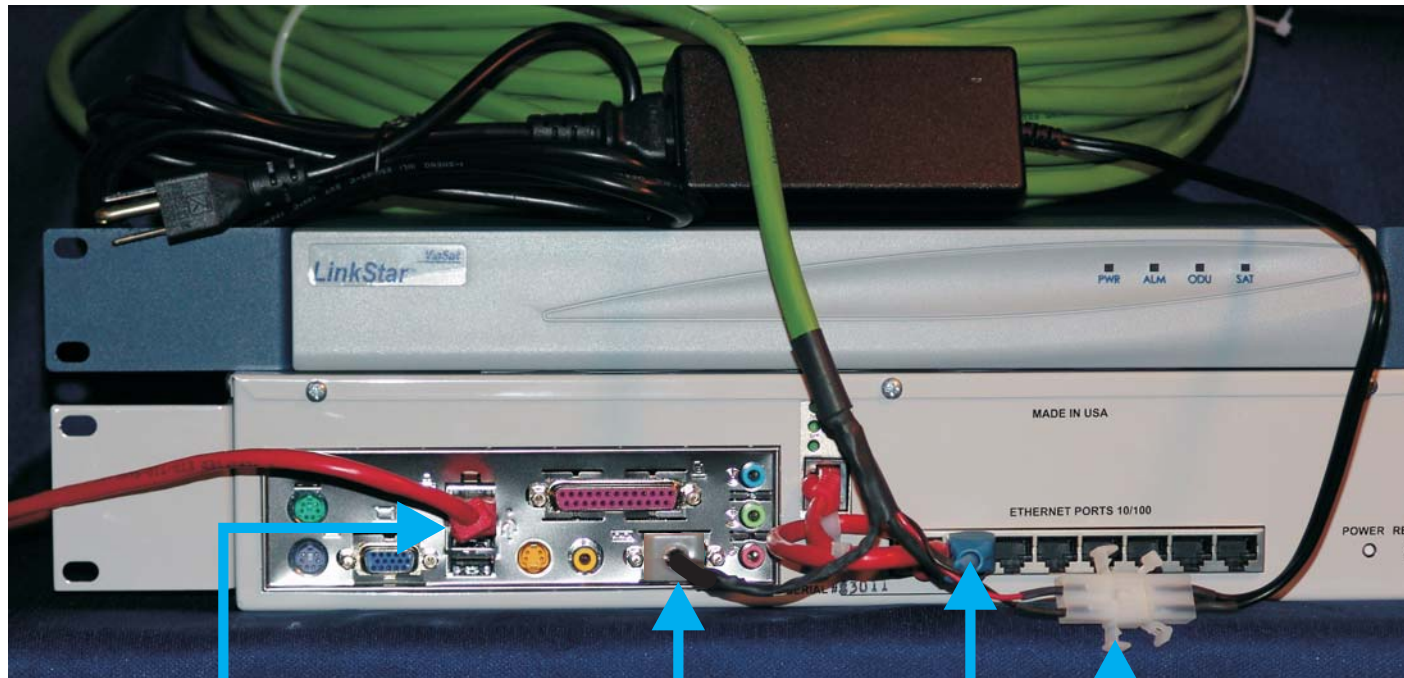
Step 3. Slide the adjacent pole between the clamps. Fasten the bolts. Position the second set of clamps around both poles and fasten the remaining bolts.



Step 4. Align the Access Point so that the top of the box is even with the top of the satellite. Fasten the box to the top of the pole with the small clamp and remaining bolts.

3.

Server Setup



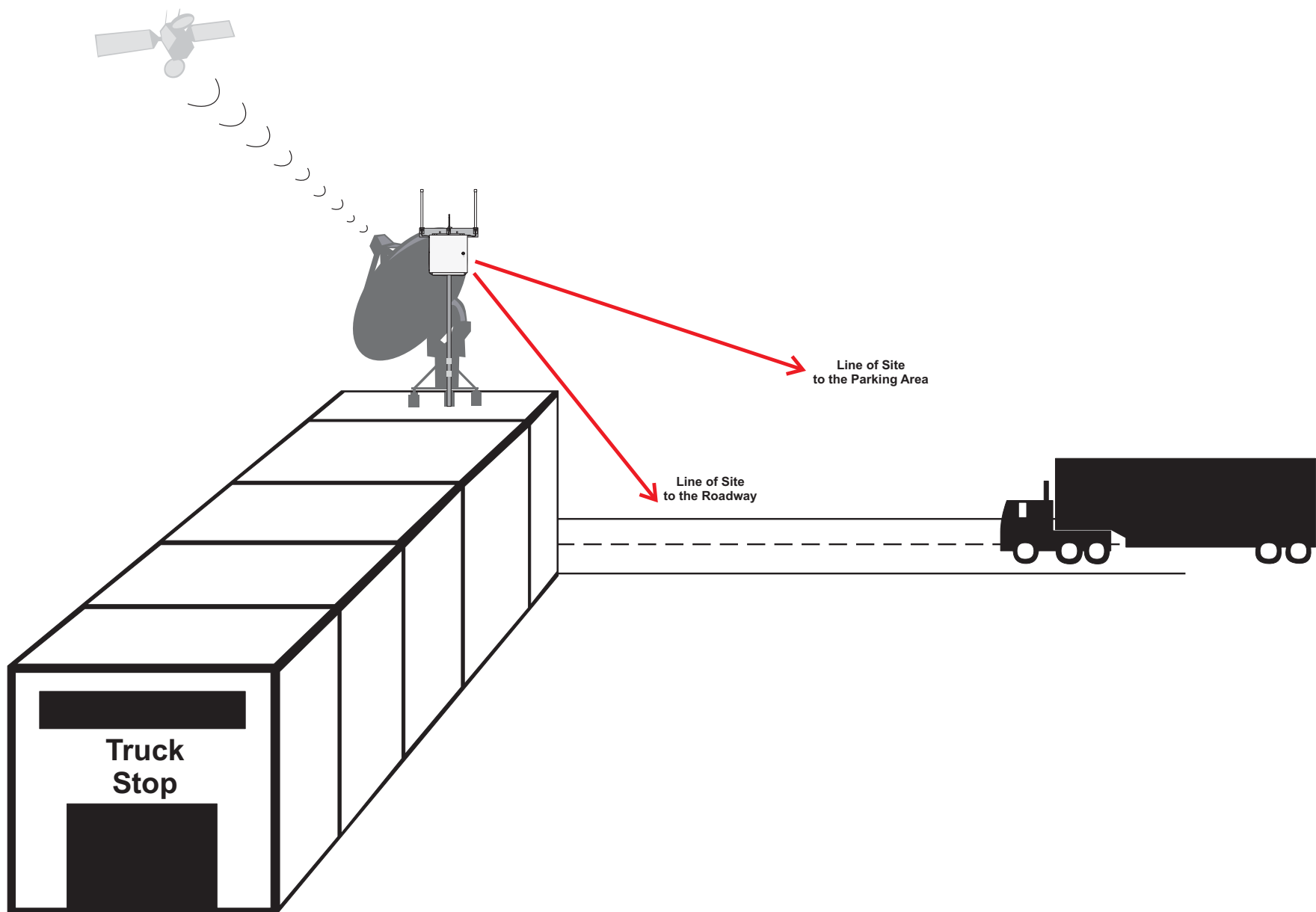
To Linkstar RCST

RS232

Ethernet

Molex Connector

4. Hot Spot & Server Positioning



This product intentionally uses RF energy and has been evaluated for RF exposure at a distance of 20 cm (8 inches). The antenna used with this product must be mounted to maintain a separation distance of 20cm to all persons. Operation at a separation distance less than 20 cm (8 inches) from the radiating element to nearby persons will expose nearby persons to RF levels that exceed the FCC rules for RF exposure and will violate FCC rules and regulations.

WARNING

THIS EQUIPMENT COMPLIES WITH PART 15 OF THE FCC RULES.
ANY CHANGES OR MODIFICATIONS NOT EXPRESSLY APPROVED
BY THE MANUFACTURER COULD VOID THE USER'S AUTHORITY TO
OPERATE THE EQUIPMENT.



2363 Merritt Dr.
Garland, TX 75041
Phone: (972) 271-3651
Toll Free: (800) 877-2288
Fax: (972) 271-3654