



MOTOROLA

HS815
Wireless Headset
with *Bluetooth*[®]
Technology

START HERE >

DRAFT

Quick Start

To use your headset, you need to:

- 1** Charge the headset (see page 15).
- 2** Turn on Bluetooth in your phone (refer to your phone's users manual).
- 3** Turn on your headset (press the Multifunction button until the LED flashes rapidly).
- 4** Pair your headset with your phone (see page 19).

Export Law Assurances

This product is controlled under the export regulations of the United States of America and Canada. The Governments of the United States of America and Canada may restrict the exportation or re-exportation of this product to certain destinations. For further information contact the U.S. Department of Commerce or the Canadian Department of Foreign Affairs and International Trade.

The use of wireless devices and their accessories may be prohibited or restricted in certain areas. Always obey the laws and regulations on the use of these products.

MOTOROLA and the Stylized M Logo are registered in the US Patent & Trademark Office. The Bluetooth trademarks are owned by their proprietor and used by Motorola, Inc. under license.

All other product or service names are the property of their respective owners.

© Motorola, Inc., 2004.

6809490A90-O

Contents

Introduction	11
What Is Bluetooth® Wireless Technology?	11
How Can I Use My Wireless Headset?	12
Headset Features	13
Using Your Headset	15
Charging Your Headset Battery . . .	15
Placing the Headset on Your Ear . .	18
Pairing Your Headset and Phone . .	19
Pairing to Additional Devices	21
Making and Receiving Calls	22
LED Indicator Light	26
Audio Tones	28

Safety and General Information

IMPORTANT INFORMATION ON SAFE AND EFFICIENT OPERATION. READ THIS INFORMATION BEFORE USING YOUR DEVICE.

Users are not permitted to make changes or modify the device in any way. Changes or modifications not expressly approved by the party responsible for compliance could void the user's authority to operate the equipment. See 47 CFR Sec. 15.21.

This device complies with part 15 of the FCC Rules. Operation is subject to the following two conditions: (1) This device may not cause harmful interference, and (2) this device must accept any interference received, including interference that may cause undesired operation. See 47 CFR Sec. 15.19(3).

Electromagnetic Interference/Compatibility

Note: Nearly every electronic device is susceptible to electromagnetic interference (EMI) if inadequately shielded, designed, or otherwise configured for electromagnetic compatibility.

Facilities

To avoid electromagnetic interference and/or compatibility conflicts, turn off your device in any facility where posted notices instruct you to do so. Hospitals or health care facilities may be using equipment that is sensitive to external RF energy.

Aircraft

When instructed to do so, turn off your device when on board an aircraft. Any use of a device must be in accordance with applicable regulations per airline crew instructions.

Medical Devices

Hearing Aids

Some devices may interfere with some hearing

aids. In the event of such interference, you may want to consult with your hearing aid manufacturer to discuss alternatives.

Other Medical Devices

If you use any other personal medical device, consult the manufacturer of your device to determine if it is adequately shielded from RF energy. Your physician may be able to assist you in obtaining this information.

FCC Notice to Users

This equipment has been tested and found to comply with the limits for a Class B digital device, pursuant to part 15 of the FCC Rules. These limits are designed to provide reasonable protection against harmful interference in a residential installation. This equipment generates, uses and can radiate radio frequency energy and, if not installed and used in accordance with the instructions, may cause harmful interference to radio communications. However, there is no guarantee that interference will not occur in a particular installation. If this

equipment does cause harmful interference to radio or television reception, which can be determined by turning the equipment off and on, the user is encouraged to try to correct the interference by one or more of the following measures:

- Reorient or relocate the receiving antenna.
- Increase the separation between the equipment and the receiver.
- Connect the equipment to an outlet on a circuit different from that to which the receiver is connected.
- Consult the dealer or an experienced radio/TV technician for help.

Battery Charger Safety

Save these Instructions

- 1** Do not expose the charger to rain or snow.

- 2** Do not operate the charger if it has received a sharp blow, or has been dropped or damaged in any way.
- 3** Do not disassemble the charger if it has received a sharp blow, or has been dropped or damaged in any way.
- 4** Never alter the AC cord or plug provided with the unit. If plug will not fit the outlet, have proper outlet installed by a qualified electrician. An improper condition can result in a risk of electric shock.
- 5** To reduce risk of damage to cord or plug, pull the plug rather than the cord when disconnecting charger from AC receptacle.
- 6** To reduce the risk of electric shock, unplug the charger from the outlet before attempting any maintenance or cleaning.
- 7** Use of an attachment not recommended or sold by Motorola may result in a risk of fire, electric shock, or personal injury.

- 8** Make sure that the cord is located so that it will not be stepped on, tripped over, or subjected to damage or stress.
- 9** An extension cord should not be used unless absolutely necessary. Use of an improper extension cord could result in a risk of fire and/ or electric shock. If an extension cord must be used, make sure:
 - That the pins on the plug of the extension cord are the same number, size and shape as those on the plug of the charger.
 - That the extension cord is properly wired and in good electrical condition, and
 - That the cord size is 18 AWG for lengths up to 100 feet, and 16 AWG for lengths up to 150 feet.
- 10** The supply cord of this charger cannot be replaced. If the cord is damaged, call Motorola Product Services at:
1- 800- 353- 2729 (U. S. A.)
1- 800- 461- 4575 (Canada)

1- 888- 390- 6456 TTY (Text Telephone)

1- 888- 390- 6456 TTY (Text Telephone)

DRAFT

Introduction

What Is Bluetooth® Wireless Technology?

Bluetooth devices communicate without wires, using built-in radio transceivers that operate on a globally available radio frequency to ensure worldwide compatibility. Your Bluetooth Wireless Headset can communicate with other Bluetooth devices within a range of approximately 10 meters (33 feet).

How Can I Use My Wireless Headset?

Your Wireless Headset, with Bluetooth® technology, lets you connect with other similarly equipped devices such as a **Motorola V600 with integrated Bluetooth technology.**

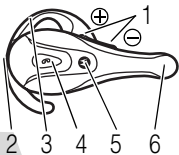
- Use your phone hands free.
- Handle incoming and outgoing calls with the headset multifunction control button (MFB).
- Use voice activation to make calls.

Note: The HS815 supports both Headset and Hands Free Bluetooth Profiles for increased functionality and

compatibility with more products. Consult your user's guide for more information.

Headset Features

1 Volume Control Buttons— Adjusts speaker volume up (+) or down (-).



2 Charging Port— Accepts the plug for your handset battery charger.

3 Earhook— Attaches headset to ear.

4 Multifunction Button (MFB)— Controls multiple headset functions.

5 Headset Indicator LED— Provides a visual cue about headset status.

6 Microphone— Picks up your voice input.

7 Speaker— Plays the sound you receive on the call.



Using Your Headset

Charging Your Headset Battery

First-Time Use—Before you can use your headset, charge its self-contained battery for two hours.

Recharging—When you hear five rapid high tones through the headset speaker, repeated at 20-second intervals, the headset battery needs recharging.

Over extended periods of time, batteries gradually wear down and require longer charging times. This is normal.

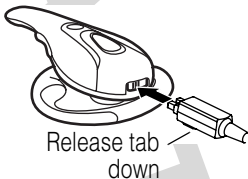
Additionally, your battery will have less standby time the more you talk on the phone with your headset.



The rechargeable batteries that power your wireless headset must be disposed of properly and may need to be recycled. Contact your local recycling center for proper disposal methods.

Warning: Never dispose of batteries in a fire because they may explode.

- 1 Plug the Motorola charger into the headset, with the charger's release tab facing down and the headset facing up.



- 2** Plug the other end of the charger into an electrical outlet.

During charging, the headset indicator turns on and remains on until charging completes. The headset will not work while charging. Your headset fully charges in approximately two hours.

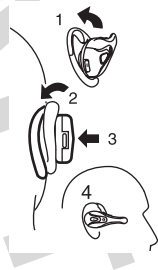
- 3** When charging completes (indicator off), remove the charger from the electrical outlet, press the release tab, and detach the charger from the headset.
- 4** To power your headset on, press and hold the MFB until the LED flashes rapidly. To turn your headset off after use, press and hold the MFB until the LED flashes rapidly.

Note: You can also use a Motorola Original Vehicle Power Adapter to charge the headset battery while in your vehicle.

Placing the Headset on Your Ear

When packaged, the headset is originally set up to wear on the right ear.

- 1** Open the earhook.
- 2** Loop the earhook over your ear.
- 3** Press the headset to your ear.
- 4** Point the microphone toward your mouth.



Tip: If you flip the earhook all the way over, you can wear the headset on your left ear.



Pairing Your Headset and Phone

Note: You must pair your headset and phone before you can make a call.

“Pairing” creates a link between devices with Bluetooth® wireless technology, and allows the phone to remember the headset’s unique ID. When your headset and phone are paired, your headset automatically connects to your phone.

With the headset and phone close together:

- 1** With the headset off, hold the Multifunction Button until the LED flashes rapidly.
- 2** Perform a *device discovery* from the phone.
For details on device discovery for your phone, refer to the phone's user's guide.

When the scan is complete, the phone displays the devices found.

- 3** Select the Motorola HS815 from the discovered devices list and confirm following the on screen prompts.
- 4** When prompted by the phone, enter the passkey **0000** and confirm to pair the headset with the phone.

The device ID is now stored in the phone's memory.

Pairing is successful when the headset indicator flashes rapidly.

Pairing to Additional Devices

Your headset can store pairing information for up to eight different devices with Bluetooth® wireless technology. Devices are stored in a "Paired Device List" in memory in the order entered. When an attempt to pair to more than eight devices is made, the oldest paired device is removed from the list.

Any of the eight paired devices can initiate a connection to the headset.

The headset will only automatically initiate a connection (upon power-up) with the **last** device it was **connected to**. If you want to connect the headset to another device in the paired device list, you must initiate the connection from that device. Whichever of the eight devices initiates a connection to the headset afterwards, that device then becomes the “last connected” device.

Making and Receiving Calls

Your headset supports both Handsfree and Headset Profiles. Accessing call functions depends on which profile your phone supports.

Note: Some phones do not support all features listed. See your phone's user's guide.

You can activate call functions for the Handsfree profile according to the following table:

**Enter
Pairing
Mode**

Phone: On

Headset: Off

Press & hold MFB until LED remains lit. Headset can be discovered by another Bluetooth® device.

**Make a
Voice
Dial Call**

Phone: On in idle

Headset: On

Short press MFB, speak name, phone dials call

Redial a Number

Phone: On—voice dialing turned on or off

Headset: On—(Idle)
Long press MFB

End a Call

Phone: On—in call

Headset: On
Short press MFB

Put Active Call On Hold

Phone: On—in call

Headset: On
Long press MFB

Resume call on hold

Phone: On—active call on hold

Headset: On
Long press MFB

Receive a Call

Phone: On—phone rings

Headset: On
Short press MFB(call is answered)

Reject a Call

Phone: On—phone rings

Headset: On

Long press MFB

Answer 2nd Incoming call

Phone: On—in call, 2nd call coming in

Headset: On

Long press MFB, places 1st call on hold, answers incoming call

Toggle between Two Active Calls

Phone: On—in call, 2nd call on hold

Headset: On

Long press MFB

Transfer Call From Phone to Headset

Phone: On—in call

Headset: On

Long press MFB, (call transferred to headset)

Note: If the link abnormally disconnects (for example, out of range) the headset tries to reestablish the link.

LED Indicator Light

With charger plugged in:

Light	Headset Status
On	charging in progress
Off	charging complete

With no charger plugged in:

Light	Headset Status
Off	power off
On	pairing mode
10 rapid flashes	pairing successful

Light	Headset Status
Steady flashes (flash on, 3 seconds off)	standby, not on a call
Pulses (2 seconds on, 6 seconds off)	connected in a call

Note: When the wireless headset is paired to the phone and there is no activity for 5 minutes, the blue flashing LED turns off. Any button press on the headset, resets the timer, and the flashing resumes. If you press the up and down volume buttons at the same time during a call, the pulsing LED turns off for the duration of that call.

Audio Tones

Audio Tone	Headset Status
Single high tone when pressing volume button	volume maximum or minimum reached
Five rapid high tones, repeated every 60 seconds	low battery
No audio indications; deteriorating audio quality	out of range
Series of 4 tones, low to high	power on
Ring tone	incoming call

Audio Tone	Headset Status
Single high tone	pairing confirmation (also when a call ends)
Single low tone	initiate voice activation
Dual high/low tone	voice tag not recognized
Series of 4 tones, high to low	power off
Fast high/low tone every 5 seconds (max. & min. volume confirm beep)	no network/service

DRAFT

DRAFT

motorola.com

**D
R
A
F
T**