

# Quick Start Guide



## cnPilot™ E500

All E500 Models

### Introduction

This sheet details assembly and installation of cnPilot E500.

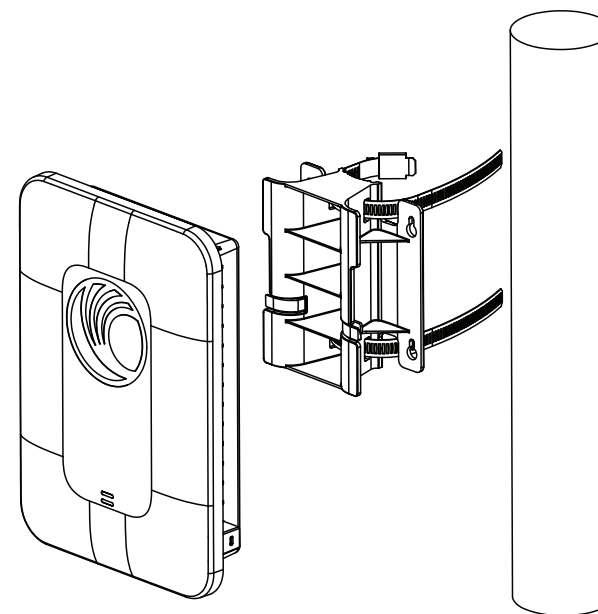
### Package Contents

- E500 access point - x1
- E500 pole/wall mount bracket - x1
- 56V/30W gigabit passive PoE power injector - x1
- Wall-mounting screw kit - x1
- RJ45 IP67 gland connectors - x2
- AC power cord (not for RoW SKU) - x1

### Tools Required

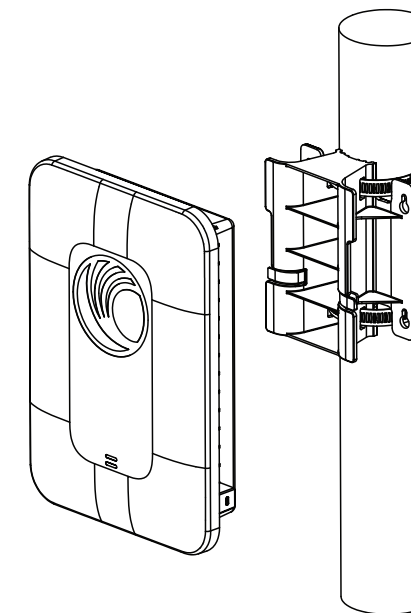
- Phillips screwdriver (Wall mount)
- Flat-head screwdriver (Pole mount)

### Step 1 (Pole Mount)



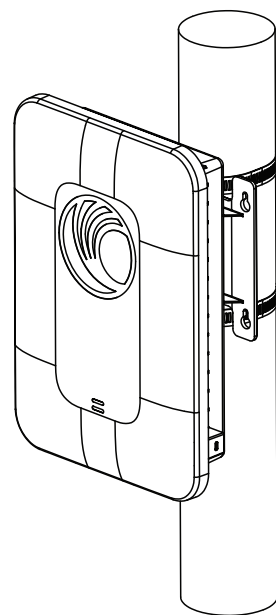
Insert the mounting straps through the mounting bracket.

### Step 2 (Pole Mount)



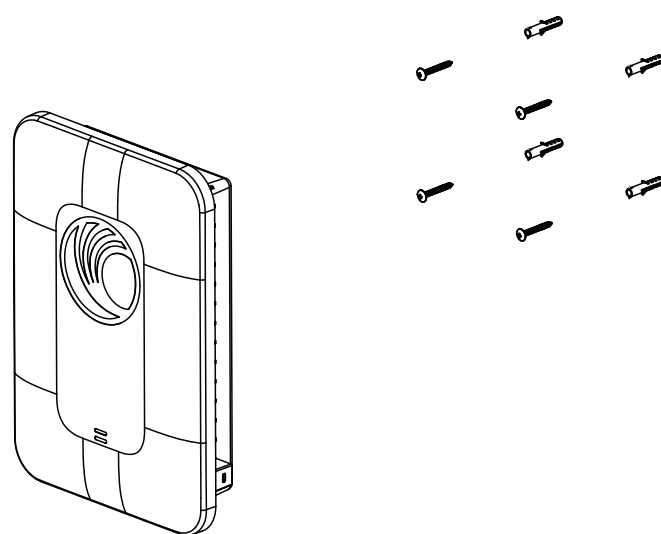
Tighten the mounting straps around the pole using a flat-head screwdriver.

### Step 3 (Pole Mount)



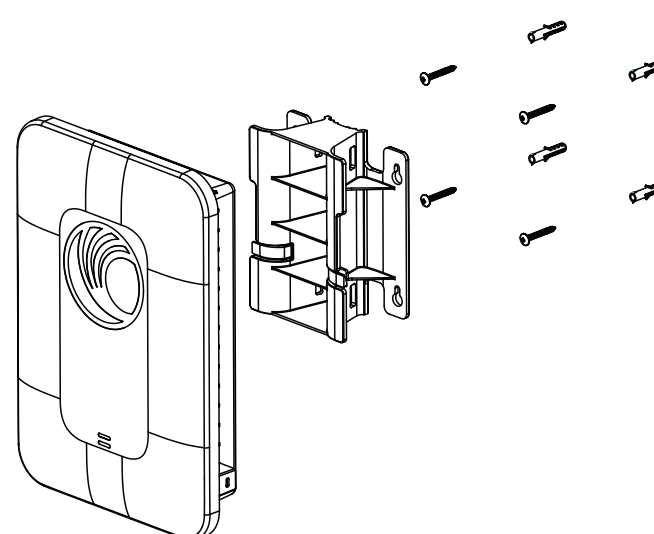
Attach the cnPilot E500 to the mounting bracket.

### Wall Mount (No Bracket)



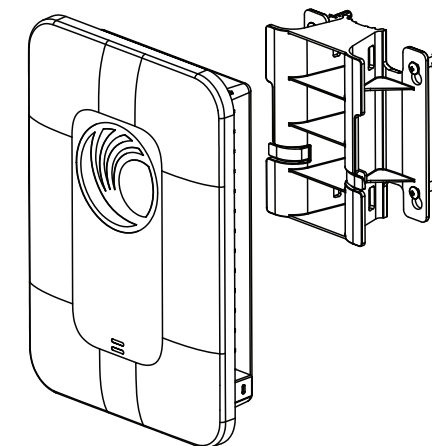
Insert the wall anchors into the wall using the mounting bracket as a template and insert the screws. Attach the cnPilot E500 to the screws.

### Step 1 (Wall Mount w/bracket)



Insert the wall anchors into the wall using the mounting bracket as a template and insert the screws.

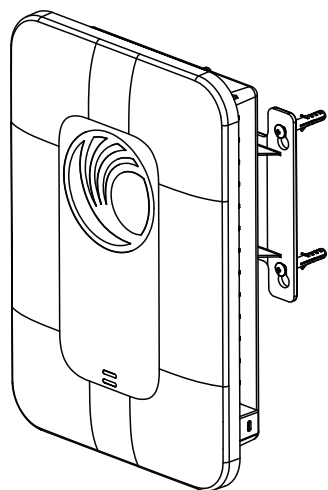
### Step 2 (Wall Mount w/bracket)



Attach the mounting bracket to the screws.

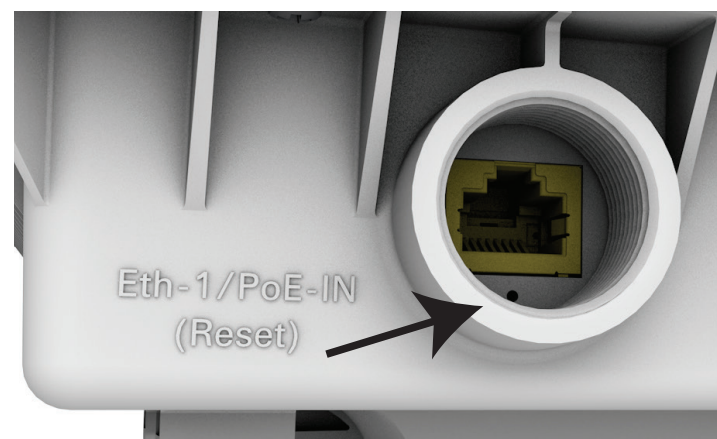
Turn sheet over to continue.

## Step 3 (Wall Mount w/bracket)



Attach the cnPilot E500 to the mounting bracket.

## Reset Procedure



To reset cnPilot E500:

- Press the reset button. The cnPilot E500 will reboot.
- Hold the button for 10 seconds. The cnPilot E500 configuration will be reset to factory default settings.

## RoHS Compliance

部件名称 (Parts)	有害物质					
	铅 (Pb)	汞 (Hg)	镉 (Cd)	六价铬 (Cr(VI))	多溴联苯 (PBB)	多溴二苯醚 (PBDE)
金属部件 (Metal Parts)	0	0	0	0	0	0
电路模块 (Circuit Modules)	X	0	0	0	0	0
电缆及电缆组件 (Cables and Cable Assemblies)	X	0	0	0	0	0
塑料和聚合物部件 (Plastic and Polymeric Parts)	0	0	0	0	0	0
光学和光学组件 (Optics and Optical Components)	0	0	0	0	0	0
电池 (Batteries)	0	0	0	0	0	0

本表格依据SJ/T 11364 的规定编制。  
0:表示该有害物质在该部件所有均质材料中的含量均在 GB/T 26572 规定的限量要求以下。  
X:表示该有害物质至少在该部件的某一均质材料中的含量超出GB/T 26572 规定的限量要求。  
(企业可在此处, 根据实际情况对上表中打“X”的技术原因进行进一步说明。)

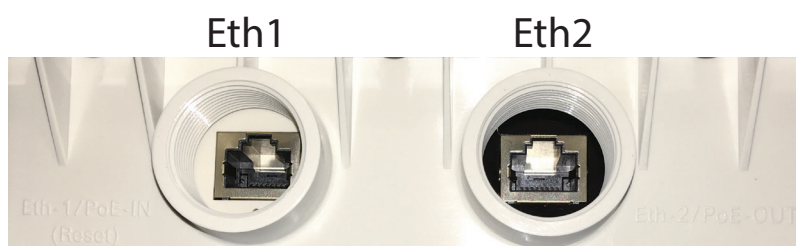
This table was created to comply with China RoHS requirements.

## WEEE Statement

Cambium Networks is committed to meeting the requirements of the European Union (EU) Waste Electrical and Electronic Equipment (WEEE) Directive. This Directive requires producers of electrical and electronic equipment to finance the takeback, for reuse or recycling, of their products placed on the EU market after August 13, 2005. Cambium Networks products that are within the scope of the Directive are labelled with a crossed-out "wheelie-bin" symbol, as required by the Directive. It indicates that the product was placed on the market after August 13, 2005 and that end users should segregate the product from other waste at end-of-life.

The WEEE Directive is being implemented in each of the 27 EU countries through national legislation. Norway and Switzerland have also implemented similar pieces of legislation. As a result, the detailed requirements vary considerably throughout the EU, and the Cambium Networks WEEE compliance approach varies among countries. In each country affected by the WEEE legislation.

## Powering



To power cnPilot E500:

- Connect the provided 56V/30W gigabit passive PoE power injector provided to the Eth1 port.

To power another device using cnPilot E500:

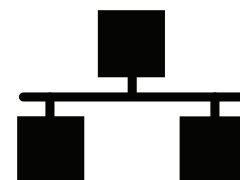
- Connect the device to the Eth2 port .
- Configure cnPilot E500 to output power on the Eth2 port by using the webpage management interface.

## LEDs

System LED



Network LED



System LED

When amber the system is powering up, and when green the system is fully powered.

Network LED

When amber, the cnPilot E500 is not connected to cnMaestro, and when green, cnPilot E500 is connected to cnMaestro.

## Default Configuration

Default IP address:

- Received via DHCP.
- cnPilot E500 will use a default static IP address of 192.168.0.1 if there is no DHCP server.

Default login information:

- Username: admin
- Password: admin

Management protocols enabled by default:

- HTTP, HTTPS (webpage management interface access), SSH (CLI management interface access).

[cambiumnetworks.com/support](http://cambiumnetworks.com/support)



Join the conversation

[community.cambiumnetworks.com](http://community.cambiumnetworks.com)



cnPilot E500 is cnMaestro ready

## **FCC Statement:**

### **Federal Communication Commission Interference Statement**

This equipment has been tested and found to comply with the limits for a Class B digital device, pursuant to Part 15 of the FCC Rules. These limits are designed to provide reasonable protection against harmful interference in a residential installation. This equipment generates, uses and can radiate radio frequency energy and, if not installed and used in accordance with the instructions, may cause harmful interference to radio communications. However, there is no guarantee that interference will not occur in a particular installation. If this equipment does cause harmful interference to radio or television reception, which can be determined by turning the equipment off and on, the user is encouraged to try to correct the interference by one of the following measures:

- Reorient or relocate the receiving antenna.
- Increase the separation between the equipment and receiver.
- Connect the equipment into an outlet on a circuit different from that to which the receiver is connected.
- Consult the dealer or an experienced radio/TV technician for help.

FCC Caution: Any changes or modifications not expressly approved by the party responsible for compliance could void the user's authority to operate this equipment.

This device complies with Part 15 of the FCC Rules. Operation is subject to the following two conditions: (1) This device may not cause harmful interference, and (2) this device must accept any interference received, including interference that may cause undesired operation.

For product available in the USA/Canada market, only channel 1~11 can be operated. Selection of other channels is not possible.

### **IMPORTANT NOTE:**

#### **FCC Radiation Exposure Statement:**

This equipment complies with FCC radiation exposure limits set forth for an uncontrolled environment. This equipment should be installed and operated with minimum distance 20 cm between the radiator & your body.