

# K-Master

Rotate cover bluetooth  
Wireless Keyboard

## BT-102KB

### User Guide

Before connecting the keyboard to your device, please make sure your device has built in bluetooth transmitting module, and has either one of the following operating system : Windows 7 / Windows XP ( Service Pack 2 or above) / Windows Vista / iOS / Android.

#### 【Keyboard front view / hot key definition】



1. Some of the keys allow combination input, you would have to use FN key together with the relevant key to make combination input.
2. To make combination input (to input char in the square) , please press the FN key together with the relevant key at same time. For example, please press "FN" key together with ">." key to input "Alt". Combination keys include, command, Alt, ->, <- , F1, F11, F12, F4, F5, F6, F7, F8, F9, and F10.
3. Delete key serves the same function as backspace key.

#### 【Keyboard back view / power switch and connect button】



- Is The Connect Button.    ■ Is The Power Switch.

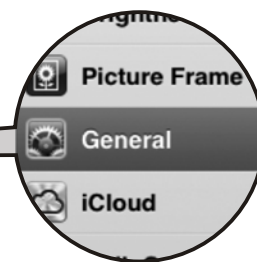
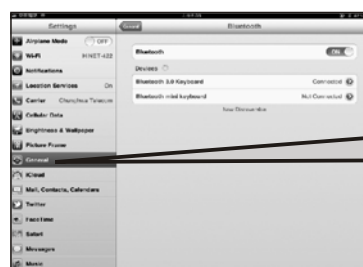
#### 【Bluetooth keyboard pairing procedure on iPad】



- 1 Insert alkaline batteries into the battery tray, and close the battery lid. Please be aware of battery direction.



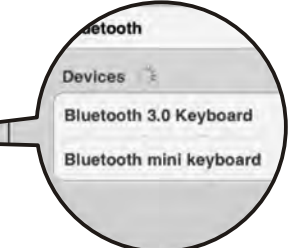
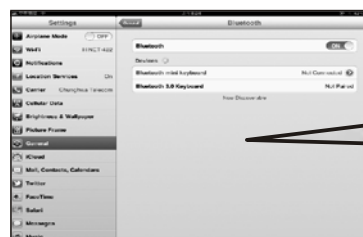
- 2 Turn on the keyboard power by sliding the power switch to the right, then on your iPad screen, please tap on the setting icon.



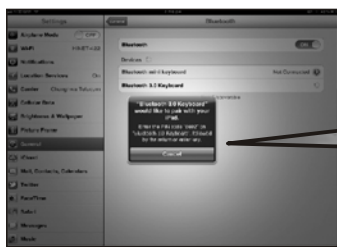
- 3 After entering the setting, please tap on the general setting of the left column, then tap on the Bluetooth device on the right column. Please make sure bluetooth device is set to "ON", your iPad will begin to search for available bluetooth device.



- 4 Press the connect button of your bluetooth keyboard to begin pairing. The LED indicator will begin flashing.

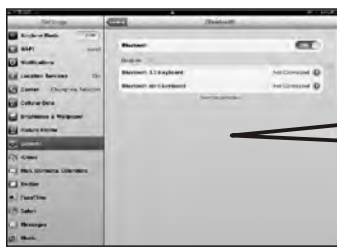


- 5 On your iPad search screen, you will see a "Bluetooth 3.0 keyboard" device, please tap the device, your iPad will start to pair up with the keyboard.



**Bluetooth 3.0 Keyboard**  
 "Bluetooth 3.0 Keyboard" would like to pair with your iPad.  
 Enter the PIN code "6692" on "Bluetooth 3.0 Keyboard", followed by the return or enter key.  
 Cancel

※Each pairing PIN CODE is different



**Bluetooth**  
 Devices  
 Bluetooth 3.0 Keyboard  
 Bluetooth mini keyboard

6 iPad will ask you to enter a default selected pin code. Please follow the instruction and enter the relevant pin code from the keyboard follow by "enter, return" key. If the connection has been successfully set up, it will appear that the keyboard device is connected.

**[ Bluetooth keyboard pairing procedure on Windows 7 ]**



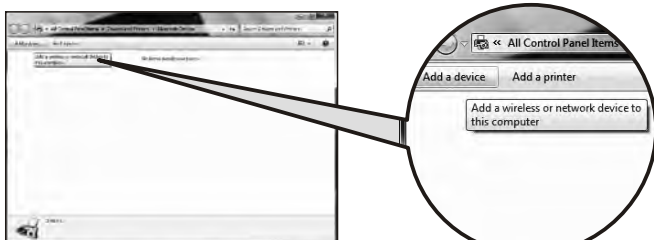
1 Insert alkaline batteries into the battery tray, and close the battery lid. Please be aware of battery direction.



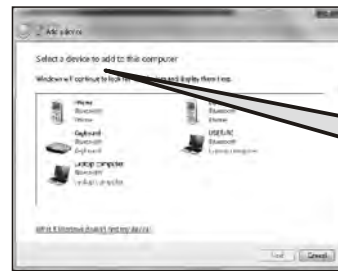
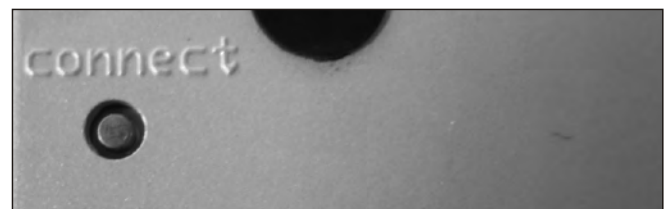
2 Turn on the keyboard power by sliding the power switch to the right. Please see direction of power indicator.



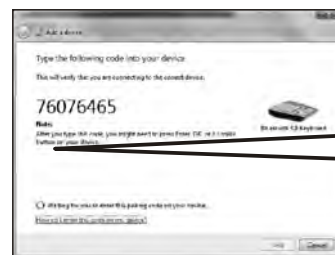
3 After starting the computer, please select and click on the bluetooth icon from your lower right screen. You may also find this "bluetooth devices" icon from your control panel.



4 Please select add a "add a device" from the device window, and a "add a device" window will show up.



5 The computer will begin to search for available bluetooth device. Simply press the connect button from back side of your keyboard to begin pairing. On your screen, please select "Bluetooth 3.0 keyboard" device, and click on next step with your mouse.



※Each pairing PIN CODE is different



6 System will pop up a window asking you to enter a (8 digits) pin code from your keyboard follow by "Enter, return" key. Please enter the relevant pin code from your keyboard and press "enter, return" key to establish wireless connection. It will appear on the screen that the bluetooth keyboard has been successfully added to your system.

**Trouble Shooting:**

- Before use of this bluetooth keyboard, please make sure that the connected smart phone has the HID (Human Interface Device) profile installed, and make sure the operating system supports Android 2.3.6 ~4.0 or above, iOS 4.0 or above. If the connected smart phone does not have the above mentioned HID profile installed, please download suitable bluetooth keyboard driver from Apple App store or Google Play. (For mid or entry level smart phones, bluetooth keyboard maybe able to connect with the devices, but user may need to download and install additional bluetooth keyboard driver for keyboard to work properly).
- This bluetooth keyboard has been tested to work with most advance smart phones, such as Galaxy SII, Galaxy SIII, Galaxy Note, iPhone 3GS, iPhone 4, iPhone 4S, or HTC One X. HID profiles have already been pre-installed on these smart phones. Therefore, users do not need to download additional bluetooth keyboard driver to make the keyboard work. Otherwise, downloading and installing additional bluetooth keyboard driver is necessary to make the keyboard work.
- Before use of this bluetooth keyboard, please make sure to use Alkaline batteries, verify batteries' power, and turn on the keyboard power switch.
- This is not a multi-pairing bluetooth keyboard, and can only be connected to a single device one at a time. If the keyboard has been successfully paired up with device A, keyboard does not need to be paired up again for every time use. However, if the keyboard is paired up with device B, the previous stored bluetooth ID with device A will be erased, and pairing is necessary for keyboard to work with device A again.
- To make combination input (to input char in the square), please press the FN key and relevant key at same time to input char in the square.
- If the device is not connected successfully, do not panic, please repeat above mentioned pairing procedures, or check the trouble shooting guideline.

## Federal Communications Commission (FCC) Statement

### 15.21

You are cautioned that changes or modifications not expressly approved by the part responsible for compliance could void the user's authority to operate the equipment.

### 15.105(b)

This equipment has been tested and found to comply with the limits for a Class B digital device, pursuant to part 15 of the FCC rules. These limits are designed to provide reasonable protection against harmful interference in a residential installation. This equipment generates, uses and can radiate radio frequency energy and, if not installed and used in accordance with the instructions, may cause harmful interference to radio communications. However, there is no guarantee that interference will not occur in a particular installation. If this equipment does cause harmful interference to radio or television reception, which can be determined by turning the equipment off and on, the user is encouraged to try to correct the interference by one or more of the following measures:

- Reorient or relocate the receiving antenna.
- Increase the separation between the equipment and receiver.
- Connect the equipment into an outlet on a circuit different from that to which the receiver is connected.
- Consult the dealer or an experienced radio/TV technician for help.

This device complies with Part 15 of the FCC Rules. Operation is subject to the following two conditions:

- 1) this device may not cause harmful interference, and
- 2) this device must accept any interference received, including interference that may cause undesired operation of the device.

### FCC RF Radiation Exposure Statement:

This equipment complies with FCC radiation exposure limits set forth for an uncontrolled environment. End users must follow the specific operating instructions for satisfying RF exposure compliance. This transmitter must not be co-located or operating in conjunction with any other antenna or transmitter.