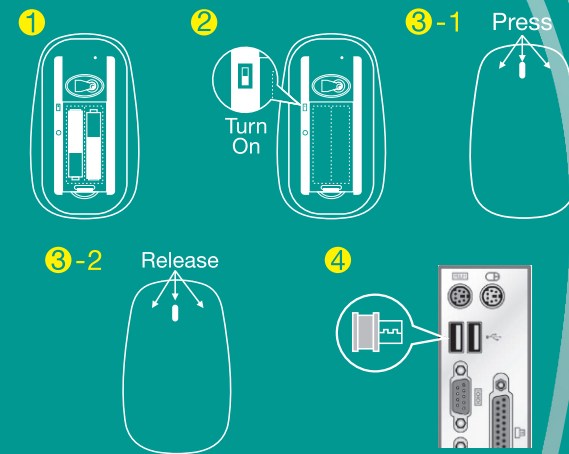


Feature

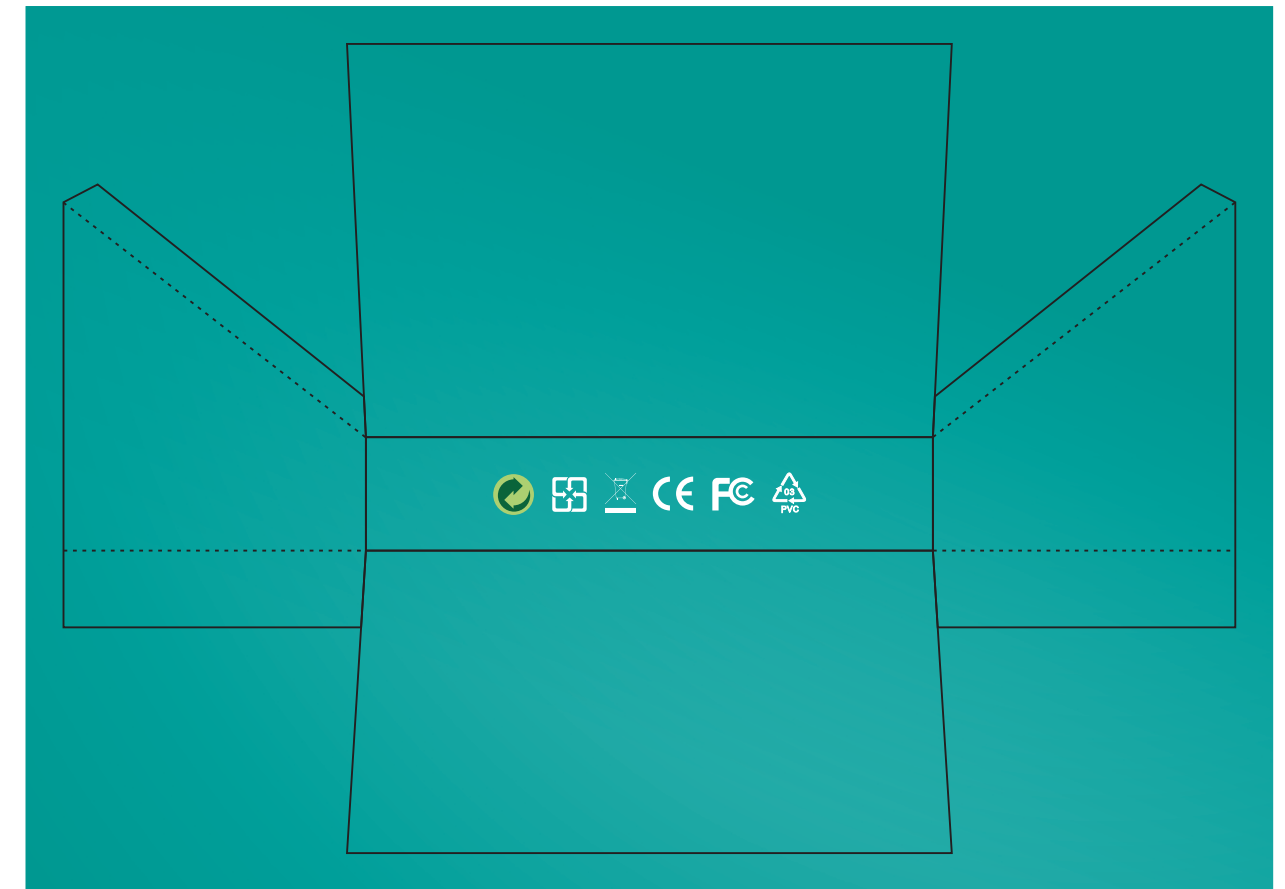
- RF 2.4 GHz wireless transmitting technology.
- 800 DPI and 1600 DPI : High Resolution switching.
- Slim & Slick Design.
- Slid on/off switch to turn on and off the power.
- USB Nano dongle receiver.



Connection Procedure

1. Insert batteries.
2. Turn on the power switch.
- 3-1. Press and hold on to mouse left, right, and scroll wheel buttons.
- 3-2. Release button presses.
4. Immediately plug in USB nano dongle receiver to USB port.

If the device is not connected properly please repeat connection procedure.
Press the red DPI button to adjust DPI.



This device complies with part 15 of the FCC Rules. Operation is subject to the following two conditions: (1) This device may not cause harmful interference, and (2) this device must accept any interference received, including interference that may cause undesired operation of the device.

FCC Statement

This equipment has been tested and found to comply with the limits for a Class B digital device, pursuant to part 15 of the FCC rules. These limits are designed to provide reasonable protection against harmful interference in a residential installation. This equipment generates, uses and can radiate radio frequency energy and, if not installed and used in accordance with the instructions, may cause harmful interference to radio communications

Any changes or modification not expressly approved by the party responsible could void the user's authority to operate the device.