

Model: AK01

AUKEY

User Manual Bluetooth Headset



FCC ID : 2ADTV-AK01

Thank you for purchasing the **AUKEY Bluetooth Headset**. Please read this user manual carefully and keep it for future reference. If you need any assistance, please contact our support team with your product model number and Amazon order number.

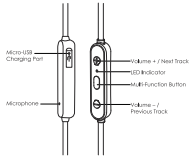
Package Contents

Bluetooth Headset
Micro USB Cable
Three Sets of Ear Tips (S / M / L)
Carrying Pouch
User Manual
Warranty Card

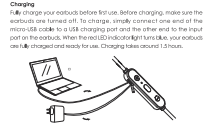
Specifications

Model	AK01
Technology	BT 4.1, A2DP, AVRCP, HFP, HSP, HSE
Chipset	CSR8645
Microphone Noise Reduction	7 generation (8.4dB, cVc)
Microphone Sensitivity	±0.5dB
Frequency Range	20-20KHz
Rated	32 Ohm
Charging Time	1.5 hour
Play Time	16-18 hours
Call Time	12-15 hours
Battery Type	LiPo (3.7V, 200mAh)
Operating Voltage	3.7V to 3.8V
Weight	13g (0.5oz)

Product Diagram



Getting Started



Turn On	Press and hold the multi-function button until the LED indicator flashes red for 2 seconds. Once the pairing LED is lit, you will hear a tone, and when you are on the headset next time, the headset will automatically enter the pairing mode.
Turn Off	Press and hold the multi-function button until the LED indicator flashes red, and you will hear a descending tone.

- Turn on the pairing function of the device you want to pair with the headset.
- Put the BT of mobile devices, find and select "AK01".
- If a code is required for pairing, enter "0000".

Simultaneous Pairing with Two Devices

- Follow the instructions in the "Pairing" section to pair the headset with Device A.
- Once paired, disable wireless function on Device A and turn off the headset.
- Follow the instructions in the "Pairing" section to pair with Device B.
- Once paired with Device B, reactivate wireless function on Device A and select "AK01" to re-pair the headset.
- You can now make and receive calls from either of the two paired devices.

Notes

- Turn off the headset, cover the headset and then hold volume +, volume - and the multi-function button simultaneously until the LED indicator flashes red for 2 seconds. Once the pairing LED is lit, you will hear a tone, and when you are on the headset next time, the headset will automatically enter the pairing mode.
- The headset will automatically shut down after 3 minutes in pairing mode if no device are paired.
- If your paired device is turned off or manually disconnected, the headset LED indicator will flash like once every 8 seconds and the headset will not be able to connect.
- The maximum wireless operating range is 33ft (10m). If you exceed this range, the headset will disconnect from your device and you will need to be in the connection range to be established once you re-enter the wireless range within 15 minutes. The headset will automatically reconnect to the last paired device. To connect with other devices, repeat the pairing steps.

Music and Calls Control

Once paired with your smartphone, making and answering phone calls can be managed via the below controls.

Answer / End a call	Press the multi-function button once.
Resistant called number	Double press the multi-function button to transfer music.
Reject an incoming call	Hold the multi-function button for more than 3 seconds.
Mute / Resume a call	Press and hold the volume - for 2 seconds during a call.
Voice switch	Press and hold the volume + for 2 seconds during a call to switch between the headset and your phone for talking.
Device switch	Press and hold the multi-function button for 3 seconds during a call to switch between two mobile phones.

Streaming Audio

Once paired, you can wirelessly stream audio from your device to your headset. Audio will automatically pause when you receive an incoming phone call and resume once the call has ended.

Play / Pause	Press the multi-function button once.
Volume Control	Press the volume + / -.
Next / Previous track	Press and hold the volume - / + for 2 seconds.
EQ Switch	Double press the multi-function button to switch music / track / genre.

LED Indicator	Status
Blue (solid) flashing alternately	Pairing mode
Blue (solid) once every 2 seconds	Standby mode
Red (flashing once every 2 seconds)	Recharge mode
Red (flashing once every 2 seconds)	Disconnection / AT call
Red (flashing once every 2 seconds)	Pairing mode
Red (flashing once every 2 seconds)	Low battery
Red	Charging
Red (stop flashing)	Full charging

FAQ

The headset is on, but not connecting with my device.
To connect the headset with your device, you need to enter pairing mode. Follow the instructions in the "Pairing" section of the manual.

I have established a connection with my smartphone but can't hear any sound.
Double check the volume level on your smartphone and the headset. Some smartphones require you to set up the headset as an audio output device before the audio can be transferred. If you are using music player or other app, please make sure it supports the A2DP stereo music player.

The sound is not very clear or the caller cannot hear my voice clearly.
Adjust the volume on your smartphone and the headset. Try getting closer to your smartphone to rule out the possibility of interference or wireless range related issues.

Can I use the headset while they are charging?
No.

What is the wireless range of the headset?
The maximum range is 32ft (10m). However, the actual range will depend on environmental factors. For better performance, keep your devices connected with the headset when a USB charging and make sure that there are no major obstacles like reinforced steel walls between the headset and your devices.

My headset won't turn on.
Try charging the headset for a while. If the headset still won't power on, please contact our support team or the address below.

Product Care & Use

- Please keep away from fluids and extreme heat.
- Do not use the headset at high volume for extended periods, as this may cause permanent hearing damage or loss.

Warranty & Customer Support
For questions, advice or warranty claims, contact us at the address below that corresponds with your region. Please include your Amazon order number and product model number.

Amazon US orders: support@aukey.com
Amazon EU orders: support@aukey.com
Amazon CA orders: support@aukey.com
Amazon JP orders: support@aukey.com

Notice for US:
Changes or modifications not expressly approved by the party responsible for compliance could void the user's authority to operate the equipment. This device complies with part 15 of the FCC Rules. Operation is subject to the following two conditions:
1. This device may not cause harmful interference, and
2. This device must accept any interference received, including interference that may cause undesired operation.

FCC rules:
This equipment has been tested and found to comply with the limits for a Class B digital device, pursuant to part 15 of the FCC Rules. These limits are designed to provide reasonable protection against harmful interference in a residential installation. This equipment generates, uses, and can radiate radio frequency energy and, if not installed and used in accordance with the instructions, may cause harmful interference to radio communications. However, there is no guarantee that interference will not occur in a particular installation. If the equipment does cause harmful interference to radio or television reception, which can be determined by turning the equipment off and on, the user is encouraged to try to correct the interference by one or more of the following measures:

- Reorient the receiving antenna.
- Increase the separation between the equipment and receiver.
- Contact the equipment manufacturer on a shielded cable different from that which is currently connected.
- Consult the dealer or an experienced radio / TV technician for help.