

Canon



WORKGROUP SOLUTIONS



 **imageRUNNER®**
1025 SERIES

MEET A TRIO OF FEATURE-PACKED PRODUCTIVITY SOLUTIONS

imageRUNNER 1025

The platen-based imageRUNNER 1025 model is a fast and dependable multifunction solution that delivers digital copying, high-quality laser printing, and color scanning capabilities.



imageRUNNER 1025N

The imageRUNNER 1025N model supports digital copying, network printing, and color scanning features, along with the added convenience of a 50-sheet Duplexing Automatic Document Feeder.



imageRUNNER 1025iF

For sophisticated users, the imageRUNNER 1025iF model builds on the capabilities of its sister products to provide color-enabled document distribution features and powerful Super G3 faxing.



Product Configuration			
Feature	imageRUNNER 1025	imageRUNNER 1025N	imageRUNNER 1025iF
Copy	Standard	Standard	Standard
Print	Standard (Canon UFR II LT)* Optional (PCL 5e/6)*	Standard (Canon UFR II LT) Optional (PCL 5e/6)	Standard (Canon UFR II LT) Optional (PCL 5e/6)
Connectivity	Standard Optional (10/100Base-TX)	Standard (USB 2.0 and 10/100Base-TX)	Standard (USB 2.0) (USB 2.0 and 10/100Base-TX)
Color Scan**	Standard	Standard	Standard
Color Send	N/A	N/A	Standard
Fax	N/A	N/A	Standard
Document Feeder	N/A (Platen Cover only)	Standard	Standard
Auto Duplexing	Standard	Standard	Standard
Memory Capacity	128MB RAM	128MB RAM	256MB RAM

* Network printing requires the optional Network Interface Adapter-IN-E11 on the imageRUNNER 1025 model.

** Available through the USB 2.0 Interface.

WORKGROUP SOLUTIONS

REDEFINING WORKGROUP EFFICIENCY

Advanced multifunction technology designed with small businesses and workgroups in mind.



 **imageRUNNER®**
1025 SERIES

Just because your needs are small in scale doesn't mean your technology solutions should be limited. In fact, you probably depend more on your office tools than companies with unlimited resources. When communication is the lifeblood of your business, you need dependable performance every time, all the time.

Canon offers three impressive choices for busy workgroups and hardworking small businesses just like yours—the imageRUNNER 1025/1025N/1025iF models. Whether you're upgrading from older, slower technology or consolidating several pieces of equipment to save space and lower costs, these compact solutions will put affordable, high-quality digital copying, fast laser printing, convenient color scanning, and powerful document distribution capabilities within easy reach.

Best of all, each system is from Canon, so you can be assured of optimal performance and reliable support every business day.

Note: Some features are only available on certain models. Check with your Authorized Canon Dealer for details.

DURABLE PERFORMANCE WITH HIGH-END CAPABILITIES

A new level of excellence so your business runs efficiently and effectively

PRODUCE HIGH-QUALITY OUTPUT

The imageRUNNER 1025 Series models copy and print at speeds of up to 25 pages per minute (letter). And with Canon's acclaimed image quality—at enhanced 1200 x 600 dpi print resolution—you get crisp-looking, detailed documents. With standard automatic duplexing, you can save time and reduce paper costs by producing two-sided output without manual intervention. Built to increase efficiency in every task, you can use the legal-sized platen glass for scanning single-page originals or leverage the 50-sheet Duplexing Automatic Document Feeder (imageRUNNER 1025N/1025iF models only) for quick handling of multipage originals.

For uninterrupted productivity, the imageRUNNER 1025 Series comes standard with a 500-sheet user-adjustable paper cassette that supports up to legal-sized paper and a 100-sheet Stack Bypass that's ideal for handling various media types for special projects. Busy workgroups will appreciate the ability to add an additional 500-sheet paper cassette to boost total online paper capacity up to 1,100 sheets. A fully integrated output tray helps save space and neatly stacks output for fast distribution.



User-Friendly Control Panel

You can access a host of image and document manipulation features directly through the system's user-friendly control panel or intuitively designed device drivers and utilities from a desktop. For printing applications, Canon provides its innovative Ultra Fast Rendering (UFR II LT) printing technology as standard for fast document processing. And there's optional support for popular PCL 5e/6 page description languages as well.

Plug-and-play connectivity is provided via a standard USB 2.0 Hi-Speed interface for optimal performance. Best of all, each model can be fully networked so you can extend system capabilities to multiple users (optional for the Canon imageRUNNER 1025 model).



Integrated Output Tray



Expandable Paper Supply



Duplexing Automatic Document Feeder

CHANGE THE WAY YOUR WORKGROUP COMMUNICATES

Innovative information-sharing tools at the touch of a button

BRIDGE THE GAP BETWEEN PAPER AND PEOPLE

Each model in the imageRUNNER 1025 Series empowers workgroup users to reach new levels of productivity with built-in, full-color scanning to quickly capture and convert important hard-copy-based information and images into electronic format for storing, editing, or integrating into existing workflows. Thanks to device drivers provided by Canon, the scanning process is made simple and easy to complete right from a desktop.

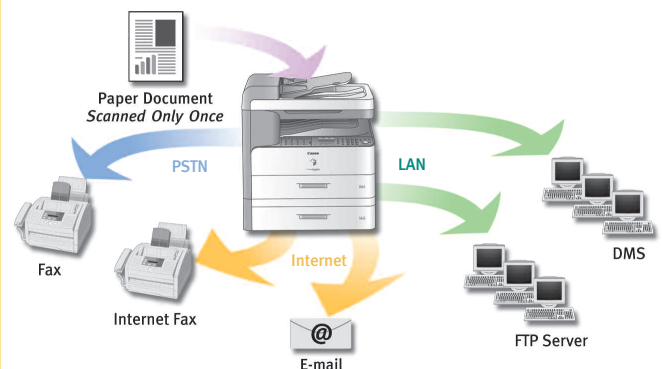
Accelerate business communications with the powerful suite of color document distribution capabilities provided as standard on the imageRUNNER 1025iF models. Scan and send documents to individual or groups of e-mail addresses, to a file folder on a network or desktop, or as an I-fax over the Internet—all in one time-saving step. Reduce administrative burdens by sending documents to multiple destinations instantly in popular file formats. Plus, with Canon's innovative PDF High Compression mode, you can minimize file sizes and reduce network traffic jams typically associated with color images.

If your business sends and receives documents via fax, then you can take advantage of the imageRUNNER 1025iF model's standard Super G3 fax technology for fast transmission speeds. Access one-touch speed-dial keys, a high-capacity Address Book, and a variety of memory features to expedite your work and make faxing simpler and smarter than ever before. You can even fax documents directly from a computer.

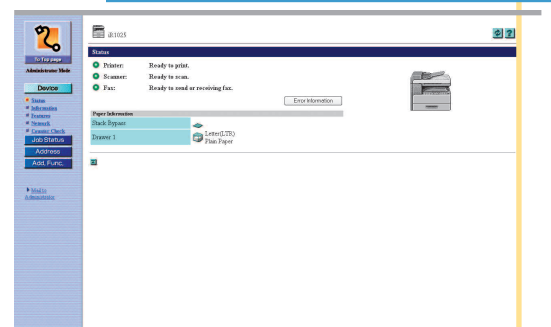
The imageRUNNER 1025 Series models are easy to manage and maintain as well. The embedded Department ID Mode tracks and limits system access to those users assigned valid IDs and passwords. In addition, device management utilities, including a browser-based Remote User Interface (UI), provide real-time monitoring and status information, while high-yielding supplies and consumables help keep operating costs to a minimum. Even more, as an ENERGY STAR® qualified system, the imageRUNNER 1025 Series models are designed with the environment in mind.



iR Toolbox Menu



Document Distribution Technology



Remote UI: Device Status Screen

SPECIFICATIONS

MAIN UNIT

Type:	Monochrome Digital Multifunction Imaging System
Imaging System:	Laser Dry Electrostatic Transfer
Developing System:	Dry Single Component Projection
Fixing System:	RAPID Fusing System
Max. Original Size:	Legal
Image Server Memory (Std./Max.)	
1025/1025N:	128MB RAM
1025iF:	256MB RAM
Max. Copy Reservation:	5 Jobs
Scan Resolution:	600 x 600 dpi
Copy Resolution (Enhanced):	1200 x 600 dpi
Print Resolution (Enhanced):	1200 x 600 dpi
Halftone:	256 Levels
Standard Paper Capacity:	1 x 500-Sheet Paper Cassette (21 lb. Bond) 1 x 100-Sheet Stack Bypass (21 lb. Bond)
Maximum Paper Capacity:	1,100 Sheets
Acceptable Paper Weight Cassette:	17 lb. to 24 lb. Bond
Stack Bypass:	15 lb. to 34 lb. Bond
Automatic Trayless Duplexing:	Standard
Magnification:	50% to 200% (In 1% Increments)
Preset Reduction/Enlargement:	50%, 64%, 78%, 100%, 129%, 200%
Copy/Print Speed:	Up to 25 ppm (LTR)*
First-Copy Time:*	Less than 8 Seconds (From Platen Glass) Less than 12 Seconds (From DADF)
Warm-Up Time*	
1025/1025N:	Less than 16 Seconds 1 Second (From Energy Saver Mode)
1025iF:	Less than 19 Seconds 1.5 Seconds (From Energy Saver Mode)
Multiple Copies:	1 to 99
Exposure Control:	Automatic or Manual (9 Levels)
Dimensions (HxWxD)	
1025:	14-7/8" x 20-1/2" x 18" (378mm x 520mm x 457mm)
1025N/1025iF:	17-7/8" x 20-1/2" x 18" (453mm x 520mm x 457mm)
Weight (Including Drum Unit, Excluding Toner Cartridge)	
1025:	Approximately 48.5 lb. (22kg)
1025N/1025iF:	Approximately 53.1 lb. (24.1kg)
Power Source:	120V AC, 60Hz, 5.4A
Power Consumption:	848W (Maximum)
Drum Type:	OPC
Toner:	Estimated Yield: Approximately 8,400 Images at 6% Coverage

Printing Specifications

CPU:	Canon Custom Processor—Shared
Memory (Std./Max.)	
1025/1025N:	Shared with Main Unit-128MB RAM
1025iF:	Shared with Main Unit-256MB RAM
PDL Support:	UFR II LT (Standard),** PCL 5e/6** (Optional with PCL Printer Kit-AB1)
Interface:	USB 2.0 Hi-Speed Ethernet 10/100Base-TX***
Printer Driver Supported OS	
UFR II:	Windows (Windows 2000/XP/Windows Vista®/7/Server 2003/Server 2008/Server 2008 R2), Microsoft® Failover Cluster (Windows 2000/Server 2003/Server 2003 R2/Server 2008/Server 2008 R2), Citrix (Presentation Server 4.0/4.5, XenApp 5.0, XenDesktop 2.0/2.1/3.0/4.0), Macintosh® (OS X 10.4.9 or later)
PCL5e/6:	Windows (Windows 2000/XP/Windows Vista®/7/Server 2003/Server 2008/Server 2008 R2), Microsoft® Failover Cluster (Windows 2000/Server 2003/Server 2003 R2/Server 2008/Server 2008 R2), Citrix (Presentation Server 4.0/4.5, XenApp 5.0, XenDesktop 2.0/2.1/3.0/4.0), SAP

Sending Capabilities††

Sending Method:	E-mail, I-fax, Fax, File Server (FTP/SMB)
-----------------	---

Destinations

One-Touch Dials:	23 Destinations
Coded Dials:	177 Destinations
Group Dials:	199 Destinations

File Formats

Black and White:	TIFF, PDF
Color:	JPEG, PDF (Compact)

Sending Sizes:	Statement to Legal
----------------	--------------------

Super G3 Fax Functionality†††

Applicable Line:	Public Switched Telephone Network (PSTN)
------------------	--

Connection Lines:	One
Effective Image Size:	Statement, Letter, Legal
Transmission Times:	Approximately 3 Seconds/Page††† 33,600 bps (Maximum)

Compression System:	MH, MR, MMR, JBIG
Error Correction:	Yes (ECM)

Dialing

One-Touch Speed Dials:	23 Destinations
Coded Speed Dials:	177 Destinations
Group Dials:	199 Destinations

Image Memory:	Approximately 1,000 Pages [†]
---------------	--

ACCESSORIES

Duplexing Automatic Document Feeder**

Acceptable Original Size:	Statement to Legal
Paper Capacity:	50 Sheets (21 lb. Bond)
Acceptable Paper Weights:	13 lb. to 34 lb. Bond (One-sided Scanning) 13 lb. to 28 lb. Bond (Two-sided Scanning)

Cassette Feeding Module-N2 (Optional)

Paper Capacity:	1 x 500 Sheet Paper Cassette (21 lb. Bond)
Acceptable Paper Size:	Legal, Letter
Acceptable Paper Weight:	17 lb. to 24 lb. Bond
Dimensions (H x W x D):	6-1/4" x 20-1/2" x 17-3/8" (158mm x 520mm x 440mm)
Weight:	Approximately 11.46 lb. (5.2kg)

Cabinet-VI

Dimensions (H x W x D):	20-5/8" x 20-1/2" x 19" (525mm x 520mm x 481mm)
Weight:	27.9 lb.

Utility Software

Remote UI/imageWARE Enterprise Management Console/Fax Driver/
Cover Sheet Editor/iR Toolbox/Canon Font Manager

Additional Supplies and Accessories

- Barcode Printing Kit-B1
- Basic Card Set
- Braille Label Kit-E1
- Card Reader Attachment-D2
- Card Reader-E1
- Cassette-AD1
- Copy Card Sets
- GPR-22 Black Toner
- PCL Printer Kit-AB1
- Network Interface Adapter-IN-E11**

▪ Up to 24 ppm (LTR) when feeding from Stack Bypass
* Warm-Up/First-Copy Time may differ depending on the condition and environment of the device.

** Network printing requires the optional Network Interface Adapter-IN-E11 on the imageRUNNER 1025 model.

*** Optional for imageRUNNER 1025 model.

† Only available for UFR II LT.

†† Send/Fax capability is only available on the imageRUNNER 1025iF model.

††† Approximate 3-second-per-page fax transmission time based on ITU-T No.1 Chart (JBIG, Standard Mode) at 33.6 Kbps modem speed when transmitting to another V.34 machine. The Public Switched Telephone Network (PSTN) currently supports 28.8 Kbps Modem speeds or lower, depending on telephone line conditions.

† Based on ITU-T Standard Mode.

†† Only available on the imageRUNNER 1025N/1025iF models.

1-800-OK-CANON
www.usa.canon.com

Canon U.S.A., Inc.
One Canon Park
Melville, NY 11747

As an ENERGY STAR® Partner, Canon U.S.A. has determined that these products meet the ENERGY STAR guidelines for energy efficiency. ENERGY STAR and the ENERGY STAR mark are registered U.S. marks. CANON, IMAGERUNNER, and the GENUINE and SUPER G3 logos are registered trademarks of Canon Inc. in the United States and may also be registered trademarks or trademarks in other countries. IMAGEANYWARE is a trademark of Canon. All other referenced product names and marks are trademarks of their respective owners and are hereby acknowledged. Some items may not be available at this time; please check for availability. Specifications and availability subject to change without notice. Some products shown with optional accessories and equipment.
©2013 Canon U.S.A., Inc. All rights reserved.