


Canon

 **Color
imageRUNNER**
LBP5975
LBP5970
LBP5460
LBP5280

 **imageRUNNER**
LBP3560
LBP3480

desktop productivity
networked
managed document services ready

OFFICE SOLUTIONS



At-a-Glance



**Color imageRUNNER
LBP5975/LBP5970**



**Color imageRUNNER
LBP5460**



**Color imageRUNNER
LBP5280**



**imageRUNNER
LBP3560**



**imageRUNNER
LBP3480**

Specifications

Print Speed	Up to 31/30 ppm (monochrome/color, letter)	Up to 31/31 ppm (monochrome/color, letter)	Up to 21/21 ppm (monochrome/color, letter)	Up to 42 ppm (monochrome, letter)	Up to 35 ppm (monochrome, letter)
Resolution	Up to 1200 x 1200 dpi	Up to 600 x 600 dpi	Up to 600 x 600 dpi	Up to 600 x 600 dpi	Up to 600 x 600 dpi
Print Drivers	Standard: UFR II, PCL 5c/6 Optional: PostScript 3 Emulation	Standard: UFR II, PCL 5c/6, PostScript 3 Emulation	Standard: UFR II, PCL 5c/6, Adobe® PostScript® 3™	Standard: UFR II, PCL 5e/6, PostScript 3 Emulation	Standard: UFR II, PCL 5e/6, Adobe PostScript 3
Paper Sizes	Up to Ledger (11" x 17")	Up to Legal (8-1/2" x 14")	Up to Legal (8-1/2" x 14")	Up to Legal (8-1/2" x 14")	Up to Legal (8-1/2" x 14")
Paper Capacity	Standard: Up to 320 Sheets Maximum: 1,970 Sheets	Standard: Up to 350 Sheets Maximum: 850 Sheets	Standard: Up to 300 Sheets Maximum: 550 Sheets	Standard: Up to 600 Sheets Maximum: 1,600 Sheets	Standard: Up to 300 Sheets Maximum: 800 Sheets
Finishing	Corner Stapling (LBP5975 model only)	—	—	—	—
MEAP Support	—	—	Yes	—	Yes
MDS Support	Yes	Yes	Yes	Yes	Yes

Note: For more details, please refer to product specifications beginning on page 10.

imageRUNNER Performance for Desktop Productivity

Uncompromising output in six impressive workgroup laser beam printers

When you need a high-quality printing solution for desktop and workgroup document production, the Canon imageRUNNER LBP Series of laser printers delivers. With this device you'll get fast output speeds, support for PCL and PostScript, available compact integrated finishing capabilities, energy efficiency, simplified operation and maintenance, and outstanding printer management tools.

The imageRUNNER LBP Series delivers the productivity and reliability you demand in a single, scalable solution—all from one of the world's most respected names in document imaging. And with Canon's device management tools, each model supports Managed Document Services (MDS), providing the flexibility to meet your needs today and into the future.

Impressive collaboration

The newest models of the LBP Series integrate with your Canon MFPs better than ever for an outstanding fleet solution. Innovative device communications allow you to automatically route faxes from your Canon MFPs to your LBP printer. Canon's MEAP technology brings MFP workflows to your desktop as well, maximizing your efficiency. And with the same administrative technology found in imageRUNNER ADVANCE MFPs, you can manage your LBP printers with even greater ease.

Powered by innovative technology

The imageRUNNER LBP Series benefits from innovations refined over decades of Canon's leading research and development. Many of the same technologies that enable high quality and productivity in the renowned imageRUNNER line are powering the imageRUNNER LBP Series. Never again will you need to sacrifice speed or capabilities when choosing a compact desktop laser printer for your office.

Even greener

Canon's commitment to protecting and sustaining the environment is stronger than ever. To help preserve resources and prevent waste, one of Canon's many environmental programs includes free return of spent cartridges to its state-of-the-art recycling facility. New imageRUNNER LBP models incorporate environmentally responsible technologies that further conserve energy and resources, reduce CO₂ emissions, and help prevent pollution throughout the entire product life cycle.

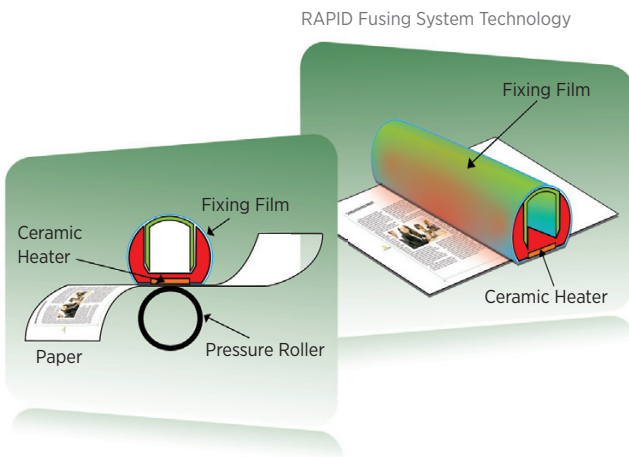


UNCOMPLICATED PERFORMANCE

Advanced technology for extraordinary documents

Canon engine innovations for peak performance

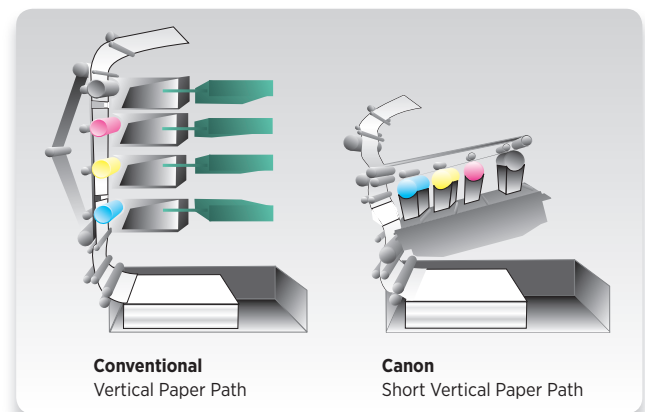
The imageRUNNER LBP Series delivers the desktop productivity and advanced technology users demand in six exceptionally compact models. The Color imageRUNNER models utilize robust, four-drum engine technology and Canon's patented Color RAPID Fusing System to produce beautiful, high-speed color and monochrome documents. The black-and-white imageRUNNER LBP3560 and LBP3480 models use the patented RAPID Fusing System to quickly output crisp monochrome documents while reducing energy consumption.



These imaging innovations have virtually no warm-up time and fast printout times with less heat. Each model is ENERGY STAR® qualified and reduces total cost of ownership with low power use, especially when in Standby Mode. Power usage in Deep Sleep Mode for individual models ranges from a low 1.8W to an even lower 1W.*

The imageRUNNER LBP Series is powered by the same high-performance system architecture developed for Canon's imageRUNNER MFP line, delivering extraordinary productivity, robust functionality, and enhanced processing capacity. The compact size and fast first-print times of the Color imageRUNNER LBP5975/5970/5460/5280 models are realized through a revolutionary short vertical paper path design.

Efficient output performance



Remarkable image quality

The Color imageRUNNER LBP5975/5970 devices utilize an innovative, compact 4-in-1 laser beam unit to achieve true 1200-dpi output in Super Fine Mode for increased image clarity and gradients, or Fine Mode for precise graphics at 600 dpi. Canon's proprietary Advanced Smoothing Technology (AST) can further enhance image quality by smoothing the edges of printed text and graphics. The Color imageRUNNER LBP5460, Color imageRUNNER LBP5280, imageRUNNER LBP3560, and imageRUNNER LBP3480 models deliver crisp output at up to 600 dpi, equivalent in appearance to 2400 x 600 dpi.

* See specifications starting on Page 10 for individual model power usage.

imageRUNNER productivity features

Compact finishing capabilities

The Color imageRUNNER LBP5975 device includes a basic corner stapling feature as standard. The compact, integrated stapling capability makes it convenient for users to quickly and easily produce multipage documents from the print driver. The finisher can staple up to 15 sheets of letter or ledger paper at a time, in a variety of corner positions.*



Stapled document output

Front USB port for memory media

Alternative print features

All six models in the imageRUNNER LBP Series enable users to print certain files through the Remote UI utility without having to install print drivers.** Users can even print documents by sending them via e-mail to a dedicated POP-based e-mail account that's been configured specifically for the device. This enables guest users to output documents easily or print them remotely.† For the ultimate in printing convenience, the Color imageRUNNER LBP5280 and imageRUNNER LBP3480 also support direct printing from USB memory media via a front USB 2.0 Hi-Speed port.

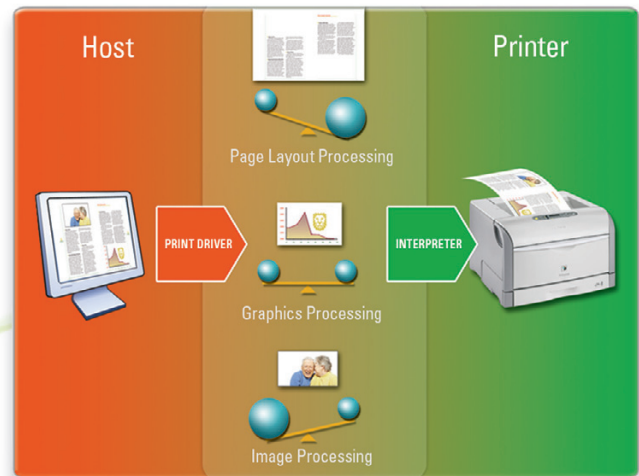
Direct Print File Support

	PDF	PS/EPS	TIFF	JPEG	XPS
Color imageRUNNER LBP5975/5970	X	X	X	X	
Color imageRUNNER LBP5460	X	X	X	X	
Color imageRUNNER LBP5280	X	X	X	X	X
imageRUNNER LBP3560		X	X	X	
imageRUNNER LBP3480	X	X	X	X	X

Optimized document processing

The embedded print controller on all six models in the imageRUNNER LBP Series supports three print languages for exceptional business compatibility. PCL is standard on all models. For graphic-centric workflows, PostScript 3 Emulation is standard on the Color imageRUNNER LBP5460 and imageRUNNER LBP3560 models and optional on the Color imageRUNNER LBP5975/5970 models; Adobe PostScript 3 is standard on the Color imageRUNNER LBP5280 and imageRUNNER LBP3480 models. Canon's UFR II print technology is also standard on each model. Optimized to produce high-speed color and monochrome documents, UFR II automatically distributes data processing between the user's desktop computer and the imageRUNNER LBP device to help take advantage of advances in computer speed.

When users print a document, the intelligent UFR II driver architecture determines the optimal balance of processing between the desktop computer and the printer by analyzing the layout and graphic components of each page. This unique approach maintains exceptionally high print performance on even complex documents that include images, graphics, and text.



UFR II Printing Technology

* When the staple feature is used, print speed may be reduced. Refer to specifications for available corner staple positions.

** Color imageRUNNER LBP5975/5970/5460 models require optional PostScript 3 ROM (standard on Color imageRUNNER LBP5460 model), Hard Disk Drive Kit, and 256MB or 512MB RAM upgrades.

† Color imageRUNNER LBP5975/5970/5460/5280 and imageRUNNER LBP3480 models only. Requires optional Hard Disk Drive Kit or SD card.

UNCOMPROMISING EASE OF USE

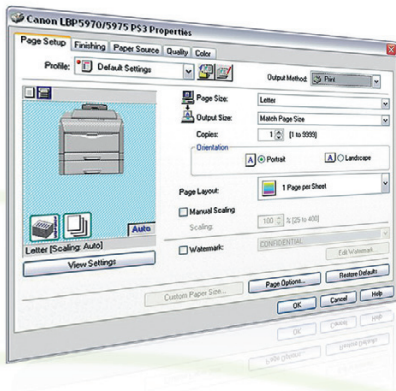
Robust support for advanced workflows

Consistent imageRUNNER print driver architecture

Canon has developed a consistent print driver that spans the entire imageRUNNER/imageRUNNER ADVANCE line to simplify and standardize the task of producing documents for users. The drivers are compatible with Windows® and Macintosh® environments and provide support for UFR II, PCL, and PostScript 3 page description languages (PDL) to ensure high productivity.** Users can quickly switch between different PDLs based on the types of documents being produced. Booklets can also be easily produced using the auto-imposition feature and finished offline.

Advanced application support

Each model in the imageRUNNER LBP Series can meet the advanced application requirements of industries, such as education and healthcare, through Adobe PostScript 3 or PostScript 3 Emulation* and bar-coded printing. PostScript support delivers accurate rasterization of PS3 print data; the Barcode Printing option ensures the accurate printing of bar codes.



Print driver interface

RIP-once technology

When the Hard Disk Drive option is installed on the Color imageRUNNER LBP5975/5970/5460 models, documents can be set to RIP once and then stored for high-speed printing of large or complicated print jobs at a later time.

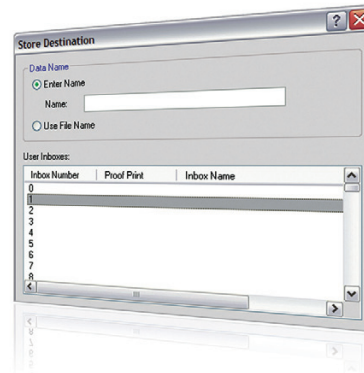
* PostScript 3 Emulation is optional on the imageRUNNER LBP5975/5970 models and standard on the Color imageRUNNER LBP5460 and imageRUNNER LBP3560. Adobe Postscript 3 is standard on the Color imageRUNNER LBP5480 and imageRUNNER LBP3480 models.

** The Macintosh environment is only supported through the UFR II and PostScript 3 driver.

† Color imageRUNNER LBP5975/5970/5460 utilize an optional Hard Disk Drive. Color imageRUNNER LBP5280 and imageRUNNER LBP3480 utilize an optional SD Card.

Document storage capabilities

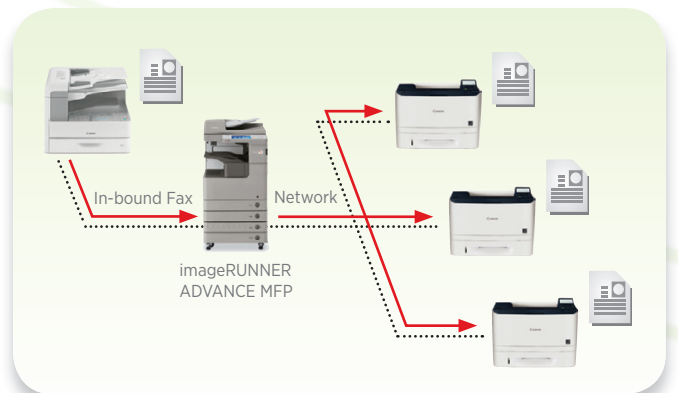
Color imageRUNNER LBP5975/5970/5460/5280 and imageRUNNER LBP3480 models offer a convenient feature to store popular print jobs in different user boxes using the Hard Disk Drive or SD Card option.† Up to 100 print jobs can be stored on the device and printed from the Remote UI Web-based utility.



Print box storage capability

Unleash new workflows with MFP integration

With the Color imageRUNNER LBP5280 and imageRUNNER LBP3480 models, you can get even more value from your imageRUNNER ADVANCE MFP systems. These two models can receive and print fax jobs routed from a Canon imageRUNNER ADVANCE MFP with fax board technology, providing the convenience of personal or departmental fax delivery from a central MFP while also reducing fax lines. With Canon's pioneering MEAP technology embedded in the two LBP models, businesses can now also leverage the workflows that previously could only be accessed from the imageRUNNER ADVANCE MFP. Solutions, such as uniFLOW Secure Print release for imageRUNNER LBP, help extend the value and utility of your investment.



Fax Routing Workflow

An easy-to-use, compact device for every user

Front-load access

All models in the imageRUNNER LBP Series have been designed with front-load access to consumables for simple replacement. The imageRUNNER LBP3560/3480 models also include an innovative closing assist mechanism that helps shut the paper tray after it's been loaded.*



Front-load access to toner cartridges on LBP5460

Simplified maintenance

The imageRUNNER LBP Series provides quick and easy maintenance of customer-replaceable components. The Color imageRUNNER LBP5975/5970 devices use a drum and toner cartridge for each color, dramatically simplifying the replacement of consumables. The Color imageRUNNER LBP5460/5280 models utilize four all-in-one cartridges that combine the drum, developer, and toners in a single unit, plus a distinctive auto-rewinding tape seal for easier installation. The imageRUNNER LBP3560/3480 models offer a convenient drum and black toner in one easily replaceable unit, with the option of a standard or high-yield, all-in-one cartridge.

Impressive paper handling

All models in the imageRUNNER LBP Series feature auto-duplexing capabilities to produce double-sided documents with nonstop productivity. The standard cassettes support a variety of paper types and sizes and offer even greater flexibility in media types with the standard Multi-Purpose Tray. For larger online paper capacities and multiple paper types, each model offers an option for additional cassettes. To help prevent the output tray from becoming over-filled, the Color imageRUNNER LBP5280 and imageRUNNER LBP3560/3480 models feature a new sensor that can detect the level of pages, pause printing when full, and then resume printing when the tray is emptied.

New user interface and enhanced usability

Each model** boasts a five-line LCD display for at-a-glance device status, consumable levels, job completion information, and animations to guide users during setup and operation. All models also utilize electronic documentation with powerful search capabilities so users won't have to waste time scanning through large printed manuals. Each system also includes Canon's easy-to-use Remote UI Web-based management tool and is fully compatible with the available imageWARE Enterprise Management Console (EMC) administration tool.



Intuitive User Interface (LBP5280 shown)



Superb paper handling (LBP3560 shown)

* The imageRUNNER LBP3480 model offers closing assist on the optional cassette only.

** Except Color imageRUNNER LBP5975/5970 models.

SECURITY AND CONTROL

imageRUNNER LBP Series security...

Data security

When the internal Hard Disk Drive option is installed on supported Color imageRUNNER LBP models,* the standard Data Erase feature protects your data by automatically erasing deleted information by overwriting that portion of the drive. On models without a Hard Disk Drive, data is instantly erased from memory when the device is powered off. Enhanced network infrastructure management is also achieved through support for IP Address Range Filtering, MAC Address Filtering, SNMPv3, and IPv6, and IEEE 802.1x network security.**

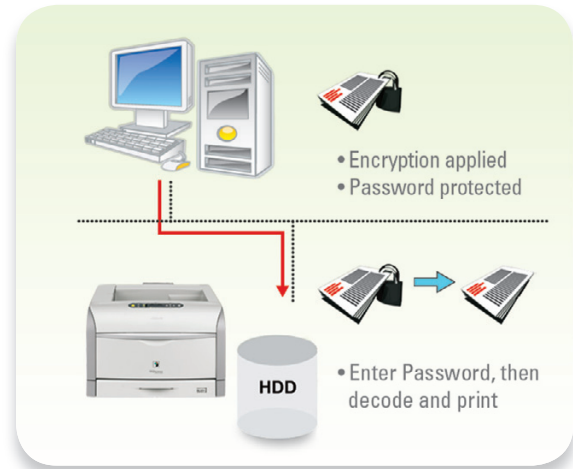


Hard Disk Drive Kit

Document security

The Color imageRUNNER LBP models and imageRUNNER LBP3480 model offer the ability to protect printed documents with the Secured Print and Encrypted Secured Print functions when the Hard Disk Drive or SD Card option is installed. The Secured Print function stores documents on the device until the user-defined password for printing is entered. For an added layer of security, the Encrypted Secured Print feature encrypts and password-protects documents before sending them to

the device over the network. For follow-me print convenience, you can also authenticate and release your print jobs from your LBP printer's interface with the available uniFLOW Secure Print solution.†

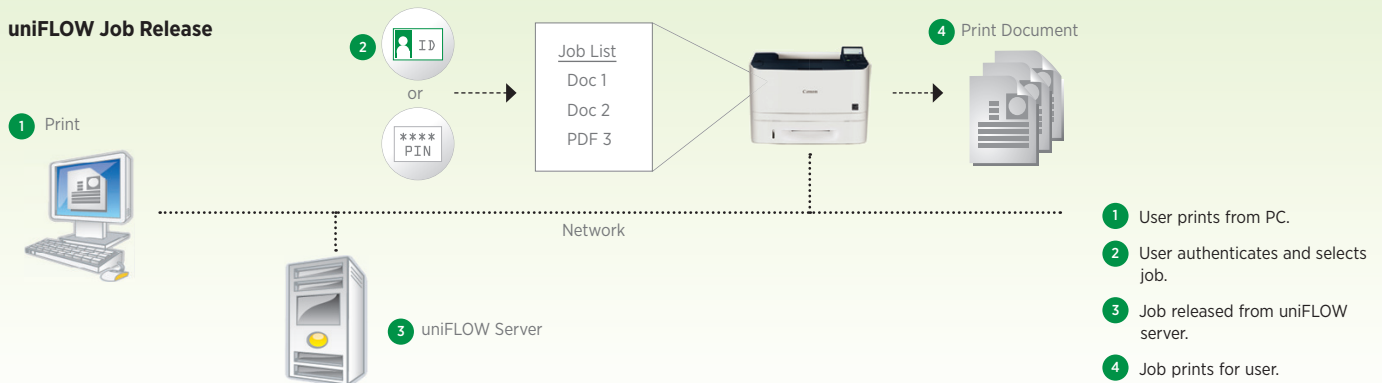


Encrypted Secured Print

Wireless LAN connectivity

With the Wireless LAN kit option for the Color imageRUNNER LBP5975/5970/5460 and imageRUNNER LBP3560 models, you can simplify access to a local network without the need for a hard-wired connection. Supported standards include 802.11g and 802.11b for up to 54Mbps and 11Mbps transmission speeds, respectively. Your print data is secured by compliance with WPA (AES), WEP, IEEE 802.1x/EAP (TLS/TTLS/PEAP), and PSK security encryption protocols.

uniFLOW Job Release



* Hard Disk Drive options: 30GB for the Color imageRUNNER LBP5975/5970 models; 60GB for the Color imageRUNNER LBP5460 model.

** IEEE 802.1X supported on Color imageRUNNER LBP5480 and imageRUNNER LBP3560/3480.

† Supported on Color imageRUNNER LBP5280 and imageRUNNER LBP3480 via optional MEAP client. Other models require MicroMIND terminal. Optional uniFLOW software required.

Note: Canon U.S.A. does not provide legal counsel or regulatory compliance consultancy, including without limitation, Sarbanes-Oxley, HIPAA, GLBA, Check 21, or the USA Patriot Act. Each customer must have its own qualified legal counsel determine advisability of a particular solution as it relates to regulatory and statutory compliance.

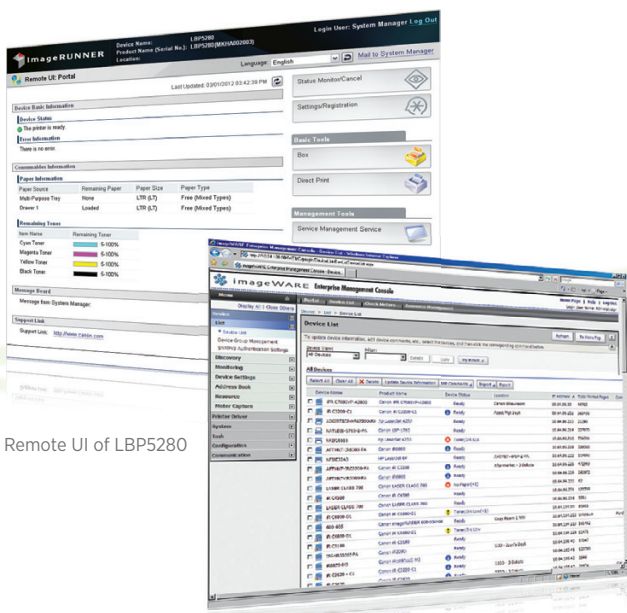
...and administration features

Optimized for fleets and Managed Document Services (MDS)

Whether you're administering devices in local offices or remote locations, Canon's robust management tools make it possible to streamline complex environments. Canon imageWARE EMC is a scalable, Web-based utility that facilitates centralized management of Canon's single/multifunction models and other-branded devices. Built on an extensible framework, it enables remote management of device settings, discovery of new devices using automated tasks, and device error notifications via e-mail. Administrators can also push print drivers to PC-based desktop computers for rapid deployment. Canon's innovative Content Delivery System (CDS) allows for remote upgrades of firmware and applications* to prevent business interruption, while standard support for imageWARE Remote lets your Canon Authorized Dealer receive automated status and service alerts for the highest service levels.

Remote UI

The standard Remote UI utility gives users the ability to check device status, track current job progress, monitor paper and toner levels, and administer document storage boxes on a Canon imageRUNNER LBP Series device through a Web browser, all from any computer on the network.

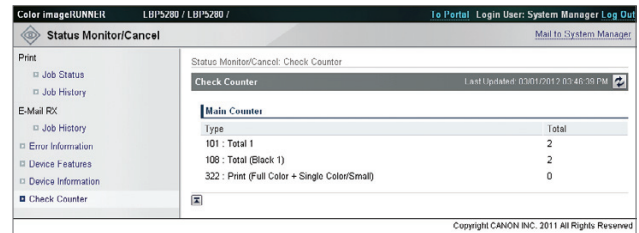


Remote UI of LBP5280

imageWARE Enterprise Management Console

Accurate and automated usage accounting

Each LBP model provides administrators and MDS providers with the ability to monitor total device output through the same counter system used in imageRUNNER MFP devices. Reports can be easily printed from the device's control panel or accessed via the network with Remote UI or imageWARE EMC. Canon's available uniFLOW software suite takes usage tracking to the next level with extensive tracking, routing, authentication, and reporting capabilities. The imageRUNNER LBP models have been designed to fully support MDS using imageWARE Remote to proactively and securely relay status, report device usage, and even remotely update firmware, saving your business valuable time and resources.



Counter Totals in Remote UI

Protecting the world we share

The corporate philosophy of *Kyosei*—to live and work together for the common good—guides Canon's commitment to protect our most precious resources: the world we share and the communities we serve. It permeates everything Canon does, from R&D and product manufacturing to marketing/sales and the product life cycle. An ISO 14001-certified manufacturer, Canon focuses on resource conservation and the elimination of hazardous substances, which has led to recognition for producing some of the world's most energy-efficient products. Through conservation, recycling, and sustainability initiatives as well as social programs, Canon's global family brings you state-of-the-art business technology solutions while contributing to the prosperity of humanity and the protection of the world we share.

*CDS is supported on the Color imageRUNNER LBP5280 and imageRUNNER LBP3480 only.

Main Unit

Type	Desktop Color Laser Printer
Printing Method	Electrophoto Method (Color RAPID Fusing System)
Developing System	Dry Dual Component Developing System
Standard PDL	UFR II, PCL 5c/6
Optional PDL Support	PostScript 3 Emulation (PS ROM 98B/98C)
Power Supply	120V-127V 60Hz
Plug	NEMA 5-15P
Memory (RAM)	Standard: 256MB Maximum: 768MB*
Hard Disk Drive	Optional 30GB
CPU	R4000 Series (400MHz)** MIPS64 Series (533MHz)**
Interface Connections	10/100Base-TX (RJ-45), Wireless LAN (IEEE 802.11)***
Other Interface	USB 2.0 Hi-Speed/USB Full-Speed (USB 1.1 Equivalent)
User Interface	LCD 16 Characters x 1 Line, 11 LED Indicators, 9 Operation Keys
Print Speed (BW/Color)	Up to 31/30 ppm (Letter)
Warm-up Time	0 Seconds from Standby 30 Seconds or Less from Power On
First-Print Time	LBP5975: 8.9 Seconds (BW) 10.4 Seconds (Full Color) LBP5970: 7.5 Seconds (BW) 9.0 Seconds (Full Color)
Resolution	Print: UFR II: 1200 x 1200 dpi* (Super Fine Mode) 2400-dpi Equivalent x 600 dpi (Fine Mode) PCL 5c/6: 2400-dpi Equivalent x 600 dpi PS3 (Optional): 1200 x 1200 dpi* (Text and Line Only) 2400-dpi Equivalent x 600 dpi

Engine:	(1200 x 1200 dpi)
Halftone:	256 Gradations (Continuous-Tone)

Print Drivers	UFR II, PCL 5c/6, PS3: Windows (XP/Windows Vista/Windows 7/ Server 2003/Server 2008/Server 2008 R2/Small Business Server 2011), Windows Terminal Servers (Server 2008/Server 2008 R2), Small Business Server 2011, Microsoft Failover Cluster (Windows Server 2003/Server 2003 R2/Server 2008/Server 2008 R2), Citrix (Presentation Server 4.5, XenApp 5.0/6.0/6.5, XenDesktop 2.0/2.1/3.0/4.0/5.0/5.5), Macintosh (OS X 10.4.9 or later) (UFR II/ PS only), VMware (vSphere 4/5), SAP (PCL/PS only)
----------------------	---

Dimensions (H x W x D)	LBP5975: 17-1/4" x 21" x 25" (438mm x 534mm x 635mm) LBP5970: 15" x 21" x 25" (381mm x 539mm x 635mm)
-------------------------------	--

Installation Space (W x D)	21-1/2" x 37-3/5" (546mm x 955mm) (when Multi-Purpose Tray is extended)
-----------------------------------	---

Weight:	LBP5975: Approx. 115.7 lb. (52.5kg) [†] LBP5970: Approx. 106.9 lb. (48.5kg) [†]
----------------	--

Power Consumption (Approx., Average)	Operating: 653W Standby: 34W Power Save Mode: 14W Deep Sleep Mode: 1W
---	--

Paper Sources	Standard Cassette: 230-sheet Paper Cassette (20 lb. Bond) 90-sheet Multi-Purpose Tray Optional: 550-sheet Paper Cassette (Up to 3) Maximum: 1,970 Sheets
----------------------	---

Paper Sizes	Cassettes: Ledger, Legal, Letter, Executive
--------------------	---

Multi-Purpose Tray:	Ledger, Legal, Statement, Letter, Executive, Custom Sizes (Width: 3-7/8" to 5-3/4"; Length: 5-1/2" to 18"), Long Size Paper (Width: 8-3/8" to 11-3/4"; Length: 18" to 47-1/4"), and Envelopes
Maximum Size:	11" x 17" (279mm x 432mm)

Paper Weight	Cassettes: 17 lb. Bond to 28 lb. Bond (63g/m ² - 105g/m ²)
---------------------	---

Multi-Purpose Tray:	17 lb. Bond to 80 lb. Cover (63g/m ² - 216g/m ²)
----------------------------	--

Paper Handling	Paper Output: Face-down
Output Capacity:	Approx. 250 Sheets (20 lb. Bond)
Duplexing:	Standard Automatic Trayless Duplexing (Executive to 11" x 17")

Finishing (LBP5975 Only)	Corner Stapling Positions
Letter:	Portrait–Upper Left, Lower Right Landscape–Upper Right, Lower Left
Executive:	Portrait–Upper Left, Lower Right Landscape–Upper Right, Lower Left
Ledger:	Portrait–Upper Right, Lower Left Landscape–Upper Left, Lower Right

Output Capacity:	Up to 15 Pages Per Set (Letter/Executive/Ledger)
Paper Weight:	17 lb. Bond to 28 lb. Bond

Toner (Estimated Yield)	Black: 10,000 Pages at 5% Coverage ^{††} Full Color: 6,000 Pages at 5% Coverage ^{††}
--------------------------------	--

Paper Feeder Unit PF-98B^{†††}

Paper Sizes	Standard: Ledger, Legal, Letter, Executive Custom: Width: 8-3/8" to 11-3/4" Length: 8-3/8" to 17"
--------------------	--

Cassette Capacity	550 Sheets x 3 Cassettes (20 lb. Bond)
--------------------------	--

Dimensions (H x W x D)	5-5/8" x 21-1/2" x 27-1/2" (143mm x 547mm x 699mm)
-------------------------------	---

Weight	Approx. 24.3 lb. (11kg)
---------------	-------------------------

Other Optional Accessories

- PostScript 3 Emulation/Barcode Printing ROM A-98B*
- PostScript 3 Emulation ROM A-98C*
- Wireless Network Interface Board NB-W2
- Hard Disk Kit HD-98B
- Cabinet W1 (Small),* X1 (Large)**
- Expansion RAM ER-128A, ER-256A, ER-512A*

* One memory slot available for expanding memory.
** The upper limit of the frequency range.
*** Through optional Wireless LAN Kit.
† If 1200-dpi print is selected, engine speed will be reduced.
† Excluding the toner cartridges and drum cartridges.
†† When printing letter-sized paper at 5% page coverage with the default print density settings.
††† Up to three additional paper cassettes can be added.
• PostScript 3 Emulation/Barcode Printing ROM A-98B and PostScript 3 Emulation ROM A-98C cannot be installed together.
▪ Up to three additional paper cassettes can be installed when Cabinet-W1 is attached.
▪▪ Up to one additional paper cassette can be installed when Cabinet-X1 is attached.

Main Unit

Type: Desktop Color Laser Printer
Printing Method Electrophoto Method (Color RAPID Fusing System)
Developing System Dry Dual Component Developing System
Standard PDL UFR II, PCL 5c/6, PS 3 Emulation
Power Supply: 120V 60Hz
Plug: NEMA 5-15P
Memory (RAM) Standard: 256MB / Maximum: 768MB*
Hard Disk Drive: Optional 60GB
CPU R4000 Series (400MHz)** MIPS64 Series (533MHz)**
Interface Connections 10/100Base-TX (RJ-45) Wireless LAN (IEEE 802.11)***
Other Interface USB 2.0 Hi-Speed USB Full-Speed (USB 1.1 Equivalent)
User Interface LCD 22 Characters x 5 Lines, 9 LED Indicators, 10 Operation Keys
Print Speed (BW/Color) Up to 31/31 ppm (Letter)
Warm-up Time 7 Seconds from Standby 60 Seconds or Less from Power On
First-Print Time 10.2 Seconds (BW)/10.4 Seconds (Full Color)

Resolution Print: 2400-dpi Equivalent x 600 dpi Engine: 600 x 600 dpi Halftone: 256 Gradations (Continuous-Tone)
Print Drivers UFR II, PCL 5c/6, PS3: Windows (XP/Windows Vista/Windows 7/ Server 2003/Server 2008/Server 2008 R2/Small Business Server 2011), Windows Terminal Servers (Server 2008/Server 2008 R2), Small Business Server 2011, Microsoft Failover Cluster (Windows Server 2003/Server 2003 R2/Server 2008/Server 2008 R2), Citrix (Presentation Server 4.5, XenApp 5.0/6.0/6.5, XenDesktop 2.0/2.1/3.0/4.0/5.0/5.5), Macintosh (OS X 10.4.9 or later) (UFR II/ PS only), VMware (vSphere 4/5), SAP (PCL/PS only)
Dimensions (H x W x D) 14-5/8" x 20-1/4" x 20-3/4" (372mm x 515mm x 528mm)
Installation Space (W x D) 29-1/8" x 32-1/4" (When Multi-Purpose Tray is extended)
Weight: Approx. 68.3 lb. (31.0kg)†
Power Consumption (Approx., Average) Operating: 573W Standby: 47W Power Save Mode: 18W Deep Sleep Mode: 1.8W

Paper Sources Standard: 250-sheet Paper Cassette (20 lb. Bond) 100-sheet Multi-Purpose Tray Optional: 500-sheet Paper Cassette Maximum: 850 Sheets
Paper Sizes Standard Cassette: Letter, Executive, Custom Sizes (Width: 5-7/8" to 8-1/2"; Length: 8-1/4" to 11-5/8") Multi-Purpose Tray: Legal, Letter, Executive, Statement, Custom Sizes (Width: 3-7/8" to 8-1/2"; Length: 5-3/4" to 14"), and Envelopes Optional Cassette: Legal, Letter, Executive, Custom Sizes (Width: 5-7/8" to 8-1/2"; Length: 8-1/4" to 14") Maximum Size: Legal (216mm x 355.6mm)
Paper Weight Standard 16 lb. Bond to 60 lb. Cassette: Cover (60g/m ² - 162g/m ²) Multi-Purpose 16 lb. Bond to 80 lb. Tray: Cover (60g/m ² - 216g/m ²) Optional Cassette: 16 lb. Bond to 65 lb. Cover (60g/m ² - 176g/m ²)
Paper Handling Paper Output: Face-down Output Approx. 250 Sheets Capacity: (20 lb. Bond) Duplexing: Standard Automatic Trayless Duplexing (Executive to Legal)

Toner ** (Estimated Yield) Average Black (GPR-29): 10,000 Standard Pages Average Composite C/M/Y (GPR-29): 8,500 Standard Pages
Paper Feeder Unit PF-723* Paper Sizes: Legal, Letter, Executive, Custom Sizes (Width: 5-7/8" to 8-1/2". Length: 8-1/4" to 14")
Cassette Capacity: 500 Sheets (20 lb. Bond)
Dimensions (H x W x D) 6-3/8" x 20-1/4" x 20-3/4" (162mm x 515mm x 528mm)
Weight: Approx. 17.2 lb. (7.8kg)

Other Optional Accessories

- Barcode Printing ROM A-723A
 - Wireless Network Interface Board NB-W2
 - Hard Disk Kit HD-723
 - Expansion RAM ER-128A, ER-256A,
ER-512A*
- * One memory slot available for expanding memory.
** The upper limit of the frequency range.
*** Through optional Wireless LAN Kit.
† Excluding the toner cartridges.
†† Toner cartridge yield in accordance with ISO/IEC 19798.
‡ Main unit ships with starter cartridges: Average Black (GPR-29) Starter Cartridge: 3,000 standard pages; Average Composite Cyan/Magenta/Yellow (GPR-29) Starter Cartridge: 4,100 standard pages.
• Up to one paper cassette can be added.

Main Unit

Type: Desktop Laser Printer
Printing Method Electrophoto Method (RAPID Fusing System)
Developing System Contact Developing System
Standard PDL UFR II, PCL 5c/6, Adobe PostScript 3
Power Supply: 120-127V, 60Hz
Plug: NEMA 5-15P
Memory (RAM): Standard: 768MB RAM
CPU: ARM11-528MHz + ARM9-264MHz
Interface Connections Shared 10/100/1000 Base-TX (RJ-45)
Other Interface USB Hi-Speedx1/USB(Host)x2
User Interface LCD 22 Characters x 5 Lines, 8 LED Indicators, 12 Operation Keys
Print Speed (BW/Color) Up to 21 ppm (Letter)
Warm-up Time 29 Seconds or Less
First-Print Time 16 Seconds or Less

Resolution Print: UFR II, PCL 5c/6, PS 3: 600 x 600 dpi, 2400 equivalent x 600 dpi Engine: 600 x 600 dpi Halftone: 256 Gradation (Continuous-Tone)
Print Drivers UFR II, PCL 5c/6, PS3: Windows (XP/Windows Vista/Windows 7/ Server 2003/Server 2008/Server 2008 R2/Small Business Server 2011), Windows Terminal Servers (Server 2008/Server 2008 R2), Small Business Server 2011, Microsoft Failover Cluster (Windows Server 2003/Server 2003 R2/Server 2008/Server 2008 R2), Citrix (Presentation Server 4.5, XenApp 5.0/6.0/6.5, XenDesktop 2.0/2.1/3.0/4.0/5.0/5.5), Macintosh (OS X 10.4.9 or later) (UFR II/ PS only), VMware (vSphere 4/5), SAP (PCL/PS only)
Dimensions (H x W x D) 13-5/8" x 16-5/16" x 19-3/4" (350mm x 414mm x 499mm)
Installation Space (W x D) 16-5/16" x 42-1/8" (414mm x 1069mm) (when Multi-Purpose Tray is extended)
Weight: Approx. 49.4 lb. (22.4 kg)*

Power Consumption (Approx. Average) Operating: 440W Standby: 22W Deep Sleep Mode: 1W
Paper Sources Standard: 250-sheet Paper Cassette (20 lb. Bond) / 50-sheet Multi-Purpose Tray Optional: 250-sheet Paper Cassette Maximum: 550 Sheets
Paper Sizes Cassettes: Legal, Letter, Executive, Statement, Foolscap, Index Card, Envelope DL, Envelope COM-10, Envelope ISO-C5, Envelope ISO-B5, and Envelope Monarch, Custom Sizes (Width: 4-1/8" to 8-1/2"; Length: 5-7/8" to 14") Multi-Purpose Tray: Letter, Executive, Statement, Foolscap, Index Card, Custom Sizes (Width: 3" to 8-1/2"; Length: 5" to 14") Maximum Size: Legal (8-1/2" x 14")
Paper Weight Cassettes: 16 lb. Bond to 43 lb. Bond (60 - 163g/m ²) Multi-Purpose 16 lb. Bond to 47 lb. Bond Tray: (60 - 176g/m ²)

Paper Handling Paper Output: Face-down Output Capacity: Approx. 125 Sheets Duplexing: Standard Automatic Trayless Duplexing (Legal, Letter)
Toner (Estimated Yield) Black/Starter: 3,400 Pages/1,200 Pages** YMC/Starter: 2,900 Pages/1,400 Pages**

Paper Feeder Unit PF-701

Paper Sizes: Same as Main Unit
Cassette Capacity: 250 Sheets (20 lb. Bond)
Dimensions (H x W x D) 4-15/16" x 16-1/8" x 20-1/2" (115mm x 409mm x 520mm)
Weight Approx. 12.1 lb (4kg)

Other Optional Accessories

- SD Card-B1 (8GB)
 - Barcode Printing Kit-F1
- * Excluding the CRG.
** Toner cartridge yield in accordance with ISO/IEC 19798.

Product Specifications

Main Unit

Type: Desktop Laser Printer
Printing Method Electrophoto Method (RAPID Fusing System)
Developing System LBP3560: Dry Dual Component Delivery System LBP3480: Contact Developing System
Standard PDL LBP3560: UFR II, PCL 5e/6, PS 3 Emulation LBP3480: UFR II, PCL 5e/6, Adobe PostScript 3
Power Supply: 120-127V, 60Hz
Plug: NEMA 5-15P
Memory LBP3560: Standard: 192MB RAM Maximum: 384MB RAM* LBP3480: Standard: 768MB RAM Maximum: 768MB RAM*
CPU LBP3560: R4000 Series (333MHz)** LBP3480: ARMII-528MHz + ARM9-264MHz
Interface Connections LBP3560: 10/100Base-TX (RJ-45) LBP3480: Shared 10/100/1000Base-T (RJ-45)
Other Interface LBP3560: USB 2.0 Hi-Speed LBP3480: USB Hi-Speed x1/USB (Host) x2
User Interface LBP3560: LCD 22 Characters x 5 Lines 9 LED Indicators 10 Operation Keys LBP3480: LCD 22 Characters x 5 Lines 8 LED Indicators 12 Operation Keys
Print Speed (BW) LBP3560: Up to 42 ppm (Letter) LBP3480: Up to 35 ppm (Letter)
Warm-up Time LBP3560: 14 Seconds or Less LBP3480: 28 Seconds or Less
First Print Time LBP3560: 7.9 Seconds LBP3480: 7 Seconds or Less
Resolution Print: UFR II, PCL 5e/6, PS 3: 600 x 600 dpi, 2400 Equivalent x 600 dpi Engine: 600 x 600 dpi Halftone: 256 Gradations (Continuous-Tone)

Print Drivers UFR II, PCL 5e/6, PS3: Windows (XP/Windows Vista/Windows 7/Server 2003/Server 2008/Server 2008 R2/Small Business Server 2011), Windows Terminal Servers (Server 2008/Server 2008 R2), Small Business Server 2011, Microsoft Failover Cluster (Windows Server 2003/Server 2003 R2/Server 2008/Server 2008 R2), Citrix (Presentation Server 4.5, XenApp 5.0/6.0/6.5, XenDesktop 2.0/2.1/3.0/4.0/5.0/5.5), Macintosh (OS X 10.4.9 or later) (UFR II/PS only), VMware (vSphere 4/5), SAP (PCL/PS only)
Dimensions (H x W x D) LBP3560: 13-1/2" x 17-7/8" x 16-3/4" (342mm x 454mm x 424mm) LBP3480: 11-7/16" x 15-3/4" x 14-13/16" (289mm x 400mm x 376mm)
Installation Space (W x D) LBP3560: 17-7/8" x 24-1/2" (454mm x 622mm) (when Multi-Purpose Tray is extended) LBP3480: 16-3/4" x 15-3/4" x 32-7/8" (when Multi-Purpose Tray is extended)
Weight LBP3560: Approx. 36.8 lb. (16.7kg)*** LBP3480: Approx. 25.6 lb. (11.6kg)***
Power Consumption (Approx., Average) Operating: LBP3560: 650W LBP3480: 550W Standby: LBP3560: 12W LBP3480: 14W Deep Sleep Mode: LBP3560: 1.2W LBP3480: 1W
Paper Sources Standard LBP3560: 500-sheet Paper Cassette (20 lb. Bond) 100-sheet Multi-Purpose Tray LBP3480: 250-sheet Paper Cassette (20 lb. Bond) 50-sheet Multi-Purpose Tray Optional LBP3560: 500-sheet Paper Cassette (Up to 2) LBP3480: 500-sheet Paper Cassette Maximum LBP3560: 1,600 Sheets LBP3480: 800 Sheets

Paper Sizes LBP3560 Cassettes: Legal, Letter, Executive, Custom Sizes (Width: 4" to 8-1/2"; Length: 5-4/5" to 14") Multi-Purpose Tray: Legal, Letter, Executive, Index Card, Custom Sizes (Width: 3" to 8-1/2"; Length: 5" to 14") and Envelopes Maximum Size: Legal (8-1/2" x 14") LBP3480 Cassettes: Legal, Letter, Executive and 16K, Custom Size (Width: 4-1/8" to 8-1/2"; Length: 5-7/8" to 14") and Envelope Maximum Size: Legal (8-1/2" x 14")
Paper Weight Cassettes: 16 lb. Bond to 32 lb. Bond (60 - 120g/m ²) Multi-Purpose Tray LBP3560: 16 lb. Bond to 53 lb. Bond (60 - 199g/m ²) LBP3480: 16 lb. Bond to 43 lb. Bond (60 - 163g/m ²)
Paper Handling Paper Output: Face-down/Face-up Output Capacity LBP3560: Face-down Output Tray: Approx. 250 Sheets Face-up Output Slot: Approx. 50 Sheets LBP3480: Face-down Output Tray: Approx. 150 Sheets/1 Sheet Face-up Output Slot: 1 Sheet Duplexing: Standard Automatic Trayless Duplexing (Legal, Letter)
Toner (Estimated Yield) Black (Starter) LBP3560: 6,000 Standard Pages† LBP3480: 2,100 Standard Pages† Black LBP3560: 12,500 Standard Pages† LBP3480: 6,400 Standard Pages†

Paper Feeder Unit PF-45 (for LBP3560) Paper Sizes: Legal, Letter, Executive, Statement, Custom Sizes (Width: 4" to 8-1/2" Length: 5-4/5" to 14") Cassette Capacity: 500 Sheets (20 lb. Bond) Dimensions (H x W x D) 6" x 17-7/8" x 18-1/2" (152mm x 454mm x 470mm) Weight Approx. 12.1 lb. (5.5kg)
Paper Feeder Unit PF-44 (for LBP3480) Paper Sizes: Legal, Letter, Executive, Custom Sizes (Width: 4" to 8-1/2"; Length: 5-13/16" to 14") Cassette Capacity: 500 Sheets (20 lb. Bond) Dimensions (H x W x D) 6-1/2" x 14-1/2" x 17-3/8" (166mm x 309mm x 441mm) Weight Approx. 9 lb. (4.1kg)
Other Optional Accessories • Expansion RAM ER-128†† • Expansion RAM ER-256†† • PS/Barcode ROM A-45†† • Wireless Network Interface Board NB-W2†† • SD Card-B1 (8GB)††† • Barcode Printing Kit-F1†††

* One memory slot available for expanding memory. Memory upgrade requires removal of standard memory.
** The upper limit of the frequency range.
*** Excluding the CRG.
† Toner cartridge yield in accordance with ISO/IEC 19752.
†† For LBP3560 only.
††† For LBP3480 only.



1-800-OK-CANON
www.usa.canon.com

Canon U.S.A., Inc.
One Canon Plaza
Lake Success, NY 11042

As an ENERGY STAR® Partner, Canon U.S.A., Inc. has determined that these products meet the ENERGY STAR guidelines for energy efficiency. ENERGY STAR and the ENERGY STAR mark are registered U.S. marks. CANON, IMAGERUNNER, and the GENUINE logo are registered trademarks of Canon Inc. in the United States and may also be registered trademarks or trademarks in other countries. IMAGEWARE is a trademark of Canon U.S.A., Inc. in the United States and is a trademark of Canon Inc. in certain other countries. IMAGEANYWARE is a trademark of Canon. All other referenced product names and marks are trademarks of their respective owners and are hereby acknowledged. Some items may not be available at this time; please check for availability. Specifications and availability subject to change without notice.

© 2012 Canon U.S.A., Inc. All rights reserved.

Federal Law prohibits copying of certain documents. Violators may be subject to penalties. We suggest that you check with your own legal counsel. Canon U.S.A., Inc. and Canon Canada, Inc. intend to cooperate with Law Enforcement Agencies in connection with claims of unauthorized copying.



0163W564
0412-LBP-6M-LSP

