

# Canon



**CORPORATE SOLUTIONS**

**ColorPASS-GX200**



 **Color  
imagerUNNER**  
*Let Your Business RUN*

## INTRODUCING THE NEW CANON COLORPASS-GX200 PRINT CONTROLLER

### EXPERIENCE INCOMPARABLE PRODUCTIVITY AND EXCEPTIONAL DOCUMENT OUTPUT CAPABILITIES ON COLOR IMAGERUNNER® DEVICES

Achieve supreme document productivity, color quality, workflow control, and more with the new Canon ColorPASS-GX200 print controller for Color imageRUNNER devices. Destined to make your graphic-intensive or mid-volume production environment operate at peak levels, the ColorPASS-GX200 delivers everything you need to expertly orchestrate the production of superior documents from creation to finishing.

The ColorPASS-GX200 controller couples a tremendously powerful system architecture and cutting-edge design with true Adobe® PostScript® 3™ support and robust feature set to realize extraordinary control over all your printed documents. Bundled with a host of tools and utilities for precise color, job management, imposition, variable data printing, administration and security, the ColorPASS-GX200 meets the exacting standards required for professional-grade document production.

## POWERFUL EXTERNAL PRINT CONTROLLER

### Features to Support Advanced Color-Centric Environments

#### Powerful Architecture

- Dual Processor 2.13GHz Intel® Core™2 Duo
- Standard 1GB of RAM
- EFI System 8 Release 2
- True Adobe PostScript
- Fast RIP performance
- Cutting-edge design

#### Usability and Administration

- Intuitive driver for PC/Mac
- Mixed Media and Booklet Maker
- Hot Folders and Virtual Printers
- Device and data security

#### Robust Document Production

- Easy-to-use interface
- Centralized control
- Command WorkStation®
- JDF workflows
- Complex impositioning
- Custom output settings
- Rich VDP support
- Paper Catalog support

#### Brilliant Color Quality

- Optimized ICC profiles
- Precise color matching
- Auto Trapping



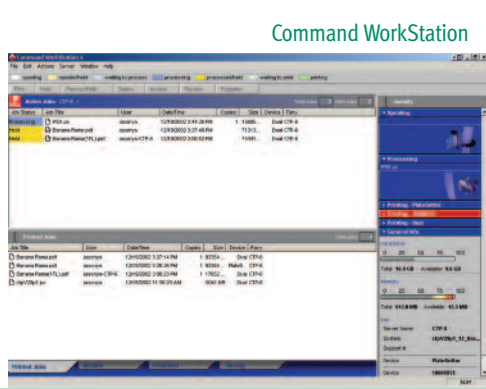
## DESIGNED FOR HIGH PRODUCTIVITY

### Productivity far beyond the norm

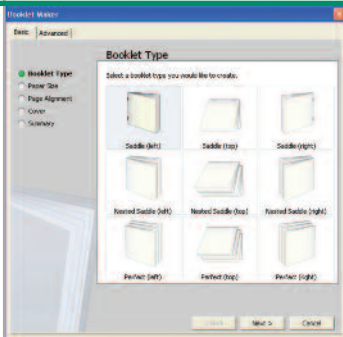
Built upon a system architecture with plenty of multitasking muscle, the ColorPASS-GX200 controller can easily execute complex processing tasks with SmartRIP technology, even while concurrently printing a job. With true PostScript and XObject support, your Adobe-based documents inspire confidence with fast, accurate output every time.

### Robust Document Production

At the touch of a finger, the Command WorkStation application provides expert-level control over all your document workflows. From Command WorkStation, users can change the properties of print jobs, preview documents, and even merge multiple documents into one. For optimal job productivity, standard features offered such as Print, Advanced Job Reorder, Quick Doc Merge, Schedule Print, and Suspend on Mismatch ensure you'll never miss a beat. With JDF support, you can greatly streamline print workflows by storing output and finishing settings within the document rather than configuring a job each time it prints. For more advanced needs, the ColorPASS-GX200 controller includes support for many leading VDP authoring programs that utilize the latest PPML 2.2 and VPS formats.



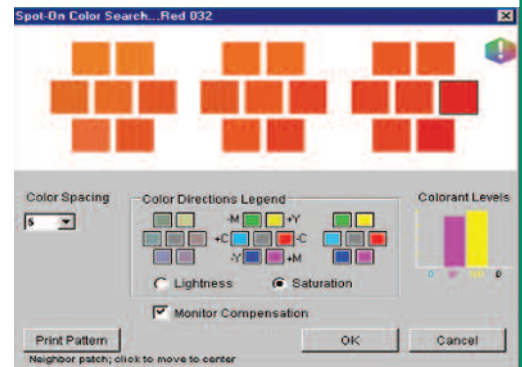
Command WorkStation



Booklet Maker

### Brilliant Color Quality

The ColorPASS-GX200 controller utilizes optimized ICC profiles in the ColorWise® architecture to achieve accurate and consistent color on Color imageRUNNER devices. Through the Spot-On® with Substitute Colors features, users can quickly match and reuse the spot colors in logos and other documents with ease for dependable reproductions. With the standard Auto Trapping feature of the print driver, color misregistration is virtually eliminated through an advanced trapping algorithm so efficient that there's little to no print performance impact. For environments that require more advanced utilities, simulation tools, and proofing capabilities, the Graphic Arts and Graphic Arts Premium packages deliver the pinnacle of capabilities.



Spot-On

### Usability and Administration

Featuring a familiar icon-driver interface and bi-directional support, users can configure each job for printing quickly and easily. For enhanced productivity, the drivers also include the new Booklet Maker v3.0 feature to facilitate the production of multi-page booklets. The standard Hot Folders and Virtual Printers features enable administrators to create network-accessible folders and printers that are pre-configured for specific output settings. Native support for Adobe Acrobat and PostScript files, as well as Microsoft® Office documents, are standard. For administrators, integration and security concerns are easily addressed with three-tiered access levels, LDAP-based user authentication, port blocking, IP/MAC filters, and secured printing capabilities that prompt users for a password at the device prior to output.

## SPECIFICATIONS

### Hardware

CPU:	Intel Core 2 Duo E6400, 2.13GHz
System:	System 8 Release 2
Memory:	1GB (Standard)
HDD:	160GB
DVD/CD-RW:	Standard
Interfaces (to LAN):	10/100/1000Base-T (RJ-45)
Server Size (H x W x D):	19-1/5" x 8-2/5" x 19"

### imageRUNNER Engine Supported

Color imageRUNNER C5185/C4580/C4080

### Operating System/Supported PDL

Windows® XPe/Adobe PostScript 3

### Color Management Features

- ColorWise Tools
  - Spot-On with Substitute Colors
  - Graphic Arts Feature Set (Option)
  - Graphic Arts Feature Set Premium (Option)
- Rich Black feature

### Workflow and Print Management Features

- Command WorkStation
- Hot Folders and Virtual Printer
- JDF Support
- Mixed Media and Booklet Maker V3
- Suspend on Mismatch
- Process Next
- Quick Doc Merge
- Schedule Printing
- Advanced Job Re-Order
- Paper Catalog
- Compatibility with PDF 1.4, 1.5, 1.6, 1.7 and PDF/X

### Networking/Connectivity

- Simultaneous Auto-switching Protocols
- EtherTalk II
- TCP/IP
- Novell® iPX iPrint
- LDAP Support
  - Exchange, Novell, Domino LDAPv3/RFC2251
  - E-mail address access and authentication
  - User password validation
- Certificate Management
  - SSL/TLS
  - X509 Standard
- IPv6 Support
- IP Sec Support

### Auto-sensing Ports

RJ45 for on-board 10/100/1000Base-T and 10/100Base-T, Automatic IP configuration

### SNMP Printing Support

Mac Bonjour, AppleTalk®, SMB (peer to peer), LPD

### Security

- Password Access in CWS
- Secure Erase
- IP Filtering
- MAC Filtering
- Port Blocking
- SNMP
- SNMPv3 System Updates
- 802.1x Support
- User Authentication
- IP Sec Support
- SSL/TLS Support
- Removable Hard Disk Drive (Option)

### Variable Data Printing

FreeForm, PPML

### Utilities

- ColorPASS-GX200 Driver
- Command WorkStation, Windows Edition
- Command WorkStation, Macintosh® Edition
- WebTools
- Hot Folders and Virtual Printers

### Power Supply and Consumption

- Auto-switching 90-135/180-265 Vac, 47-63Hz
- 6A @ 115 Vac ; 3A @ 230 Vac

### Safety/EMC

- CE Mark, CSA, TUV/GS, UL, CB Scheme, RoHS
- EMC
  - EN55022 Part B (CE marked)
  - FCC Class B
  - VCCI II

### Options

- Graphic Arts Feature Set V2.1
- Graphic Arts Feature Set Premium V2.1
- Impose V2.7
- Compose V2.0
- Removable Hard Disk Drive Kit-B1
- X-Rite Eye-One
- Advanced Controller Interface Kit
- Integrated Interface and Stand-A1

**Canon**  
image*ANYWARE*

1-800-OK-CANON  
www.usa.canon.com

Canon U.S.A., Inc.  
One Canon Plaza  
Lake Success, NY 11042

As an ENERGY STAR® Partner, Canon U.S.A., Inc. has determined that this product meets the ENERGY STAR guidelines for energy efficiency. ENERGY STAR and the ENERGY STAR mark are registered U.S. marks. Adobe and PostScript are registered trademarks or trademarks of Adobe Systems Incorporated in the United States and/or other countries. Intel and Celeron are trademarks or registered trademarks of Intel Corporation or its subsidiaries in the United States and/or other countries. Novell is a registered trademark of Novell, Inc. in the United States and other countries. EFI, Command WorkStation, FreeForm, ColorWise, and Spot-On are registered trademarks of Electronics for Imaging, Inc. in the U.S. Patent and Trademark Office and/or certain other foreign jurisdictions. Macintosh, AppleTalk, and EtherTalk are trademarks of Apple Inc. Microsoft and Windows are registered trademarks of Microsoft Corporation in the United States and/or other countries. CANON, COLORPASS, and IMAGERUNNER are registered trademarks of Canon Inc. in the United States and may also be a registered trademarks or trademarks in other countries. IMAGEANYWARE is a trademark of Canon. All referenced product names and other marks are trademarks of their respective owners. Specifications and availability subject to change without notice.  
©2008 Canon U.S.A., Inc. All rights reserved.

