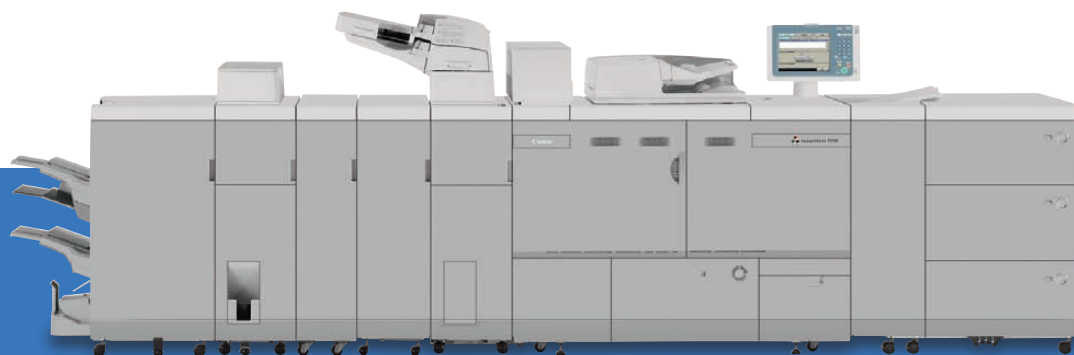


Canon

 **imagePRESS®**
1110S



INTRODUCING THE CANON imagePRESS® 1110S



Canon imagePRESS 1110S shown with optional accessories.



Canon's imagePRESS C7000VP digital press brought new levels of image quality to the digital color printing market. Canon's significant annual investment in Research and Development has helped to make the Canon brand synonymous with ultra-high-quality digital imaging. Now, Canon's imagePRESS 1110S digital press (the S stands for Standard engine) is ready to revolutionize digital black-and-white printing. Leveraging the same core architecture as the imagePRESS C7000VP digital press, Canon has developed a remarkable monochrome production press.

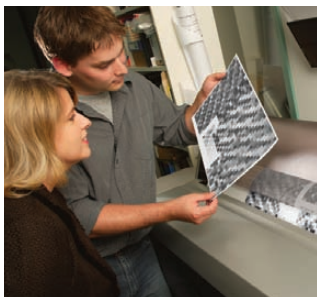
With a system that delivers quality, productivity, and versatility, one would surmise that it has an equally expensive acquisition point. Not so with the Canon imagePRESS 1110S digital press. With revolutionary imaging technologies that produce near lithographic printing, the imagePRESS 1110S digital press is remarkably affordable. With true 1200 x 1200 dpi output and 256 tonal gradations, the imagePRESS 1110S digital press produces consistently crisp text and beautifully detailed halftones on a wide range of media types and sizes.

Canon has engineered a press that delivers the extraordinary image quality you expect from an imaging leader. Subsequently, Canon understands that you need a press that's scalable, flexible, and can be augmented as your business needs change and grow.

THE imagePRESS 1110S IS IDEAL FOR:

- **In-plant print shops** and **central reprographic departments** that want to save time and money on a wide variety of complex print projects and deliver more value to the organization.
- **Quick printers, digital printers,** and **service bureaus** that want the versatility to print and finish a higher number of different types of jobs each day.
- **Large corporate offices** that want to produce high-quality office documents efficiently without the high cost associated with traditional high-end production equipment.

Workflow solutions that keep your business moving



Canon understands your business is more than printing, that it's a system including both hardware and software applications. For this reason, we offer **imagePRESS Workflow Solutions**, a suite of hardware and software solutions to help grow your business. From the creative aspects of a job through finishing, Canon has you covered.

As your business progresses, you may want to include more automation for your business. Make-ready solutions are available to help produce print more efficiently, which will help the bottom line. Create complex jobs that employ multiple tray calls with ease. In addition, with job splitting solutions, you can send a print job across several devices for even greater productivity.



Deliver – Canon will *deliver* a complete solution and fill in the missing pieces to existing workflows.

Connect – Many organizations have already made large investments in their workflow and they need Canon to *connect* into their existing workflow.

Simplify – The final goal is to deliver a solution that builds efficiency within the workflow and *simplifies* your production processes.

IMAGE QUALITY, PRODUCTIVITY, AND VERSATILITY

Superb print quality

Canon takes the science of printing to the next level. The imagePRESS 1110S digital press has features not found on a system at this price point. With this digital press, produce the precise halftone images, sharp text, and dense blacks that were only obtainable on high-end equipment but are now available to everyone. Not only will you be impressed with the quality, but this system will also easily integrate into your current workflow.

QUALITY THAT HAS TO BE SEEN

The imagePRESS 1110S digital press can produce high coverage areas without mottle, as well as fine lines and small text fonts. The halftone quality is smooth across the entire tonal range, resulting in image quality that will make you take a second look. With a true resolution of 1200 x 1200 dpi and 256 gradations, the imagePRESS 1110S digital press is the next level in black-and-white production printing.

CONSISTENCY YOU CAN COUNT ON

To make sure that the last print looks just as good as the first, the imagePRESS 1110S digital press incorporates new technologies to produce the highest quality print. One such technology is the twin-sleeve design that delivers toner to the photoreceptive imaging drum. While most systems only have one sleeve to deliver toner to the drum, the imagePRESS 1110S digital press employs two sleeves. This design ensures that even those hard-to-reproduce, high-coverage areas are produced flawlessly and without mottle.

AN ACCURATE FINISH WITH CANON'S REGISTRATION SYSTEM

A print system is just that—a *system*. In addition to high-quality printing, a device must have accurate front to back registration. Canon's accurate registration system helps prevent skewing, positioning, and timing problems. This ensures that each sheet enters the press straight, centered, and at the proper frequency so that the images and text are placed in the same location on each sheet—*every time*.

Empower your business to do more

Canon is known for producing high-end, high-quality equipment that's easy to use and dependable. The imagePRESS 1110S digital press can run unattended for hours because of its high-capacity toner hopper.

WORK WITHOUT INTERRUPTION

A combination of features work together to maximize productivity and keep the press humming.

"On-the-Fly" Paper and Toner Replacements let you refill paper trays, replace toner, or change waste toner bottles without stopping the press.

Multifeed Detection is a standard technology that works with the main unit drawer. For the Side Paper Deck, Multi-feed Detection is an option. If two or more sheets of paper are detected entering the press from the Side Paper Deck simultaneously, they'll be diverted to the Escape Tray on top of the Side Paper Deck, without ever stopping the press.

Durable Parts help minimize downtime. The Canon imagePRESS 1110S digital press is designed with the highest quality parts, such as the Amorphous Silicon (a-Si) drum. This drum is used to create the images that are transferred to the paper. With parts that are designed to last, you'll have minimal downtime and maximum productivity.

Flexible paper handling for all types of jobs

Whether you print on thin media, thick media, or anything in between, the imagePRESS 1110S digital press can handle a variety of stocks, so be sure to keep plenty of paper on hand. The imagePRESS 1110S digital press comes with one standard tray that can handle up to 2,000 sheets of paper, as well as one Side Paper Deck that accommodates 6,000 sheets.

EFFORTLESSLY SWITCH BETWEEN PAPER STOCKS

With the **Media Library** on the imagePRESS 1110S digital press, you can manage and select stocks from one central location. After details about the properties of each paper have been entered, you can easily select the appropriate stock for each job. By entering the paper parameters in the Media Library, the press will know automatically how to adjust the temperature of the rollers to produce a high-quality reproduction and ensure optimal press performance during the print run.

COLOR INSERTION HAS NEVER BEEN EASIER

Creating a document that contains a mix of both black-and-white and color pages could be a daunting task if you don't have the right equipment. With the **Document Insertion Unit-F1**, you can easily set up jobs to automatically merge color pages into black-and-white documents.

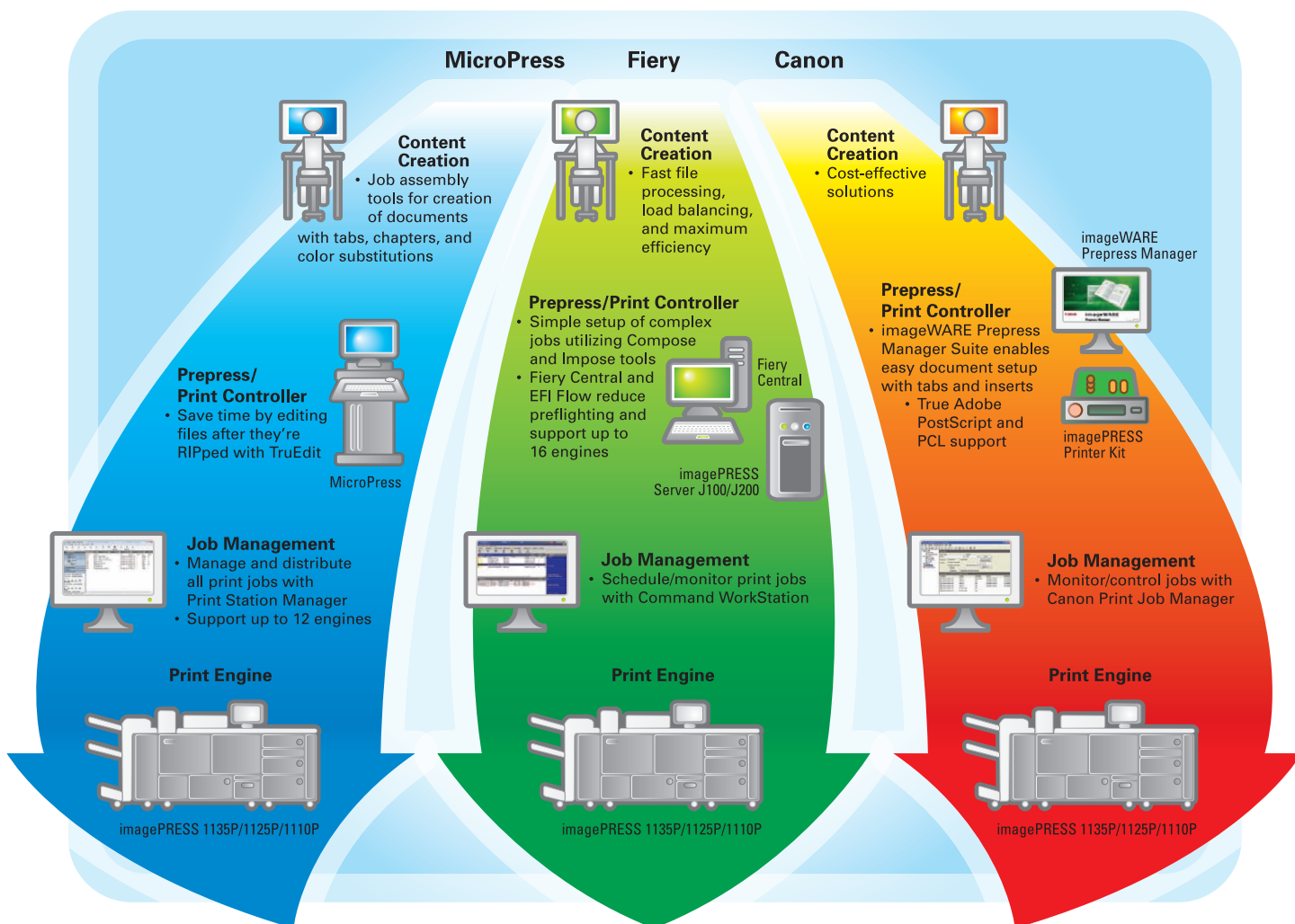
THE RIGHT PRINT SERVER AND MAKE-READY SOLUTION FOR YOUR WORKFLOW



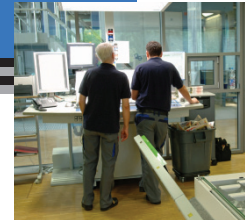
Powerful print servers

Canon understands your workflow is unique to your business. For this reason, the imagePRESS Workflow Solutions program exists to help you with a suite of workflow options to ensure your business needs are met. Canon offers a wide selection of print servers, content creation, and prepress software to efficiently handle the many different workflow requirements that exist within in-plants, quick printers, and large corporate offices. Based on the nature and volume of your current jobs (and the type of work you plan to do in the future), we can recommend the right combination of make-ready tools and processing power that can help you complete the highest number of jobs each day with the fewest number of operators. Below is a workflow chart that illustrates a few of the many workflow options available depending upon your requirements. Workflow Solutions are versatile in that they may be configured for your requirements. Canon can help you design any workflow solution to help you meet your goals.

WORKFLOW OPTIONS



OPTIONS



DOCUMENT FINISHING EQUIPMENT OPTIONS FOR THE imagePRESS® 1110S

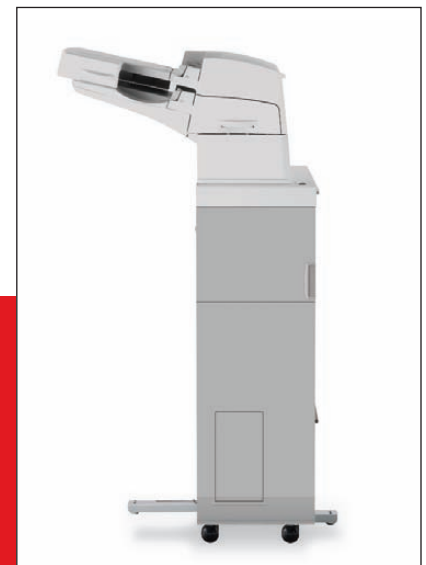
Upgrade to the print quality and speed of production monochrome printing, *without paying for more in-line finishing capacity than you actually need.*

The imagePRESS 1110S digital press can be equipped with finishing accessories designed to enable print production environments to quickly turn around a variety of jobs, including mailers, proposals, and manuals.

But not everyone who wants top-quality document printing needs production-grade finishing equipment. Many corporate offices may simply want to upgrade their printing systems to be able to generate near offset lithographic quality prints. That's why Canon offers a line of accessories for cost-conscious customers.

With this set of standard finishing accessories, you can take advantage of the outstanding image quality and production speeds of the imagePRESS 1110S digital press, without paying for more capabilities than you actually need. The standard finishing accessories can easily handle the inserting, folding, punching, collating, and stapling requirements of day-to-day document printing. They're ideal for helping you quickly produce short runs of professional-looking proposals and presentations.

The **Side Paper Deck-AF1** is a standard accessory that improves productivity. This paper deck consists of three drawers that accommodate 6,000 sheets of paper (14 lb. Bond to 110 lb. Cover) up to 13" x 19.2". The paper deck has the option of being equipped with an escape tray to divert double-feeds, all without the press ever shutting down.



Document Insertion Unit-F1

The **Document Insertion Unit-F1** allows you to quickly assemble instructional manuals and other publications, as it can insert pre-printed cover sheets or insert sheets for finishing. The upper and lower trays each can hold up to 200 sheets of plain paper or tabbed index stock with weights ranging from 14 lb. Bond to 110 lb. Cover. The sizes range from B5 to 13" x 19.2".

The **Professional Puncher and Integration Unit-B1** is a mid-level production puncher that provides a variety of optional punch patterns for your business needs. No longer will you need to take printed materials and drill them off-line or purchase expensive pre-punched stocks. The Professional Puncher will be a welcomed in-line finishing accessory in your business. Simply insert one of the available punch tools to enable in-line hole punching for letter-sized pages.



Paper Folding Unit-F1

The **Paper Folding Unit-F1** is an accessory that can help your business by having the ability to fold documents in-line. Not only will you be able to quickly produce jobs, you can produce mailers ready to be inserted into envelopes. The folder can produce C-folds, V-folds, Z-folds, and zigzag folds needed for brochures and statements.

The **Saddle Finisher-AG2** is for those customers who require short-run saddle-stitched booklets. This accessory automatically creates saddle-stitched booklets up to 80 pages (20 sheets). In addition, the Saddle Finisher-AG2 can corner-staple and double-staple up to 100 sheets. To give manuals and booklets the most professional look, the staple is automatically cut to the thickness of the output. There are also two trays that will accommodate stacking of 4,250 sheets of paper. In addition, there's also the **Finisher-AG1**. If you don't require saddle-stitched booklets but require stacking and stapling functionality, the Finisher-AG1 is ideal.



Saddle Finisher-AG2

The **Inner Booklet Trimmer-A1** is an internal booklet trimmer that's installed inside the Saddle Finisher-AG2 and performs a face trim up to 80 pages (20 sheets). The advantage of this accessory is the face of the booklet is trimmed and no undesirable effects of creep will be evident.

The **Puncher Unit-BF1** is an internal punch that's installed inside the finisher or saddle finisher. For accurate two- and three-hole punching on both 11" x 17" and letter-sized paper (up to 140 lb. Index), this puncher is a perfect fit. Paper path sensors built into the puncher detect the sides of the paper and ensure that hole placement is accurate and consistent.



Color Image Reader-L1

The **Color Image Reader-L1** is for today's digital print environments that works with hard copy as well as digital materials. What happens when a customer only has hard-copy originals? Not to worry, because with the optional Color Image Reader-L1, you don't have to turn away that job. In addition, the Color Image Reader-L1 scans in color and provides the opportunity for you to scan originals to a digital file and print them on your other color devices. Also, this scanner is a single-pass duplex scanner that scans both sides of the page simultaneously. With an input capacity of 300 sheets and the ability to handle stocks from 16 lb. Bond to 120 lb. Index, you can take any job.

Specifications



MARKING ENGINE

Technology:	Laser Electrostatic Transfer System
Resolution:	Up to 1200 x 1200 dpi
Halftones:	256-Level Grayscale
Print Speed	
Simplex:	110 (Letter)
	68 (11" x 17")
Duplex/Perfect:	55 (Letter)
	34 (11" x 17")
Maximum Paper Size:	13" x 19.2"
Paper Feeding	
Standard:	2,000 Sheets (20 lb. Bond)
Maximum:	8,000 Sheets (20 lb. Bond)
Paper Weight (All Trays)	
Uncoated:	14 lb. Bond to 110 lb. Cover (52gsm to 300gsm)
Coated:	24 lb. Bond to 90 lb. Cover (80gsm to 240gsm)
Duplex/Perfect:	Automatic Duplex/Perfect
	Any Supported Stock
Power Source:	208V/30A+15A
Dimensions (H x W x D):	54.12" x 54.62" x 31.87" (1373mm x 1387mm x 809mm)
Weight:	1,103 lb. (500kg)

Standard Side Paper Deck-AF1 (Optional)

Paper Capacity:	6,000 Sheets (2,000 x 3) (20 lb. Bond)
Maximum Paper Size:	13" x 19.2"
Paper Weight (All Trays)	
Uncoated:	14 lb. Bond to 110 lb. Cover (52gsm to 300gsm)
Coated:	24 lb. Bond to 90 lb. Cover (80gsm to 240gsm)
Dimensions (H x W x D):	43.25" x 38.75" x 81.37" (1098mm x 985mm x 999mm)
Weight:	331 lb. (150kg)
Power Source:	120V/15A

Finisher-AG1/Saddle Finisher-AG2 (Optional)

Number of Trays:	3
Tray Capacity	
Top Tray:	250 Sheets (20 lb. Bond)
Middle Tray:	1,500 Sheets (20 lb. Bond/Letter)
Lower Tray:	2,500 Sheets (20 lb. Bond/Letter)
Saddle-Stitch Tray:	25 Booklets
Staple Positions:	Corner-Stapling, Double-Stapling
Paper Weight	
Finisher:	14 lb. Bond to 110 lb. Cover (52gsm to 300gsm)
Saddle Finisher:	14 lb. Bond to 110 lb. Cover (52gsm to 300gsm)
Acceptable Paper Size	
Stapling:	Executive, Letter-R, Letter, Legal, 11" x 17"
Sheet Stacking:	Up to 13" x 19.2"
Saddle Finisher:	Letter-R, Legal, 11" x 17", 12" x 18", 13" x 19"

Max. Stapling Capacity:	Up to 100 Sheets
Max. Booklet Stapling	
Capacity:	Up to 20 Sheets Saddle-Stitched
Dimensions (H x W x D)	
Finisher-AG1:	41" x 25.75" x 30.12" (1040mm x 654mm x 765mm)
Saddle Finisher-AG2:	41" x 30.25" x 30.12" (1040mm x 767mm x 765mm)

Weight	
Finisher-AG1:	130 lb. (59kg)
Saddle Finisher-AG2:	234 lb. (106kg)
Power Source:	120V/15A

Puncher Unit-BF1

(Option for Finisher-AG1/Saddle Finisher-AG2) (Optional)

Paper Weight:	14 lb. Bond to 140 lb. Index (52gsm to 256gsm)
Paper Sizes	
2-Hole:	Legal, Letter-R
3-Hole:	11" x 17", Letter, EXE
Punch Speed:	Up to 110 ppm
Punch Source:	From Finisher
Weight:	8.2 lb. (3.7kg)

Document Insertion Unit-F1 (Optional)

Paper Capacity:	400 Sheets (200 x 2) (20 lb. Bond)
Maximum Paper Size:	13" x 19.2"
Paper Weight:	14 lb. Bond to 110 lb. Cover (52gsm to 300gsm)
Dimensions (H x W x D):	55.37" x 29.37" x 31.25" (1407mm x 746mm x 793mm)
Weight:	122 lb. (55kg)
Power Source:	120V/15A

Color Image Reader-L1 (Optional)

Image Sensor:	CMOS
Document Size:	Statement to 11" x 17"
Resolution:	600 x 600 dpi, 256 Gradations
Dimensions (H x W x D):	2.8" x 25" x 23.2" (74mm x 635mm x 590mm)
Weight:	26.5 lb. (12kg)
Power Supply:	From Main Unit

DADF (Duplex Automatic Document Feeder) (Optional)

Tray Capacity:	300 sheets (20 lb. Bond)
Scanning Speed B/W:	Up to 200 ipm (300 dpi) Up to 120 ipm (600 dpi)
Scanning Speed Color:	Up to 80 ipm (300 dpi) Up to 40 ipm (600 dpi)*
Acceptable Original Size:	Statement to 11" x 17"

Paper Weight:	14 lb. Bond to 120 lb. Index (50gsm to 220gsm)
Dimensions (H x W x D):	7.12" x 25" x 23.12" (179mm x 633mm x 588mm)
Weight:	59.3 lb. (26.9kg)
Power Source:	From Main Unit

Inner Booklet Trimmer-A1 (Optional)

Margin Trimming:	Fore-Edge Trim
Trim Amount:	0.08" to 0.78" (2mm to 20mm)
Trim Thickness:	20 Sheets
Paper Weight:	14 lb. Bond to 110 lb. Cover (52gsm to 300gsm)
Power Source:	From Saddle Finisher

Paper Folding Unit-F1 (Optional)**

Fold Type	
V-fold:	Letter-R
Z-fold:	Legal, 11" x 17", Letter-R
C-fold:	Letter-R
Zigzag Fold:	Letter-R
Supported Media Weights:	14 lb. Bond to 28 lb. Bond (52gsm to 105gsm)
Power Source:	From Finisher
Dimensions (H x W x D):	46.87" x 13.25" x 31.25" (1190mm x 336mm x 793mm)
Weight:	144 lb. (65kg)

Professional Puncher and Integration Unit-B1 (Optional)

Paper Size:	Letter
Supported Media Weights:	20 lb. Bond to 80 lb. Cover (75gsm to 216gsm)
Productivity:	Up to 135 ppm (Depends on Speed of Marking Engine)
Chip Tray Capacity:	25,000 Sheets
Punch Patterns:	3H, 5H, Velo Bind 11H, Plastic Comb 19H, Twin Loop 21H/32H, ProClick 32H, Color Coil 44H
Power Source:	120V/15A
Dimensions (H x W x D):	41" x 22.5" x 31.25" (1040mm x 560mm x 792mm)
Weight:	258.2 lb. (117.3kg)

*System Upgrade RAM-B1 required for 600 dpi color scanning

**Requires either the Finisher-AG1 or the Saddle Finisher-AG2

Canon
*image*ANYWARE

1-800-OK-CANON
www.usa.canon.com

Canon U.S.A., Inc.
One Canon Plaza
Lake Success, NY 11042

CANON and IMAGEPRESS are registered trademarks of Canon Inc. in the United States and may also be registered trademarks or trademarks in other countries. IMAGEANYWARE is a trademark of Canon. All other referenced product names and marks are trademarks of their respective owners and are hereby acknowledged. Some items may not be available at this time; please check for availability. Specifications and availability subject to change without notice. All printer output images are simulated.

©2011 Canon U.S.A., Inc. All rights reserved.

0711R-1110S-BRO-PDF-IH