

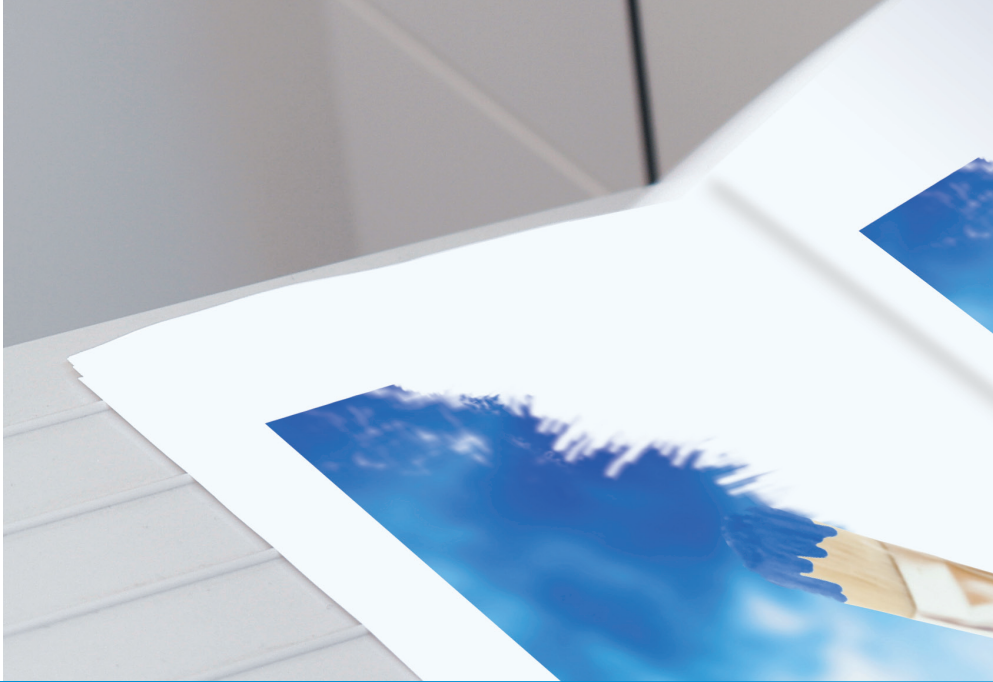
Canon

 **imagePRESS C1+**



CREATE





CLEAR ADVANCE



PRINT WHAT YOU SEE



INTEGRATE WITH DESKTOP COLOR MANAGEMENT SOLUTIONS



The imagePRESS C1+ color digital printing system—craftsmanship in color.

The Canon imagePRESS C1+ color digital printing system is the first color device with clear toner for the light production and proofing market. Designers seeking only the highest quality digital color proofing will immediately identify the “texture” that clear toner adds to imagery. This press is equipped with calibration tools for industry profiles to showcase vivid, vibrant colors. It also has color management tools that realize exceptional color for true-to-production prints.

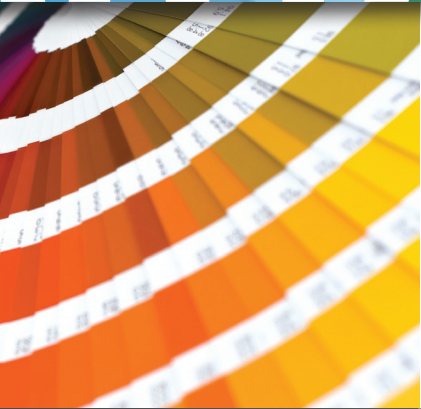
Whether creating logos or designing ad campaigns, from concept to presentation, the imagePRESS C1+ color digital printing system provides a comprehensive proof that accurately and consistently extends your ability to communicate effectively and with impact.

The imagePRESS C1+ color digital printing system is perfect for graphic artists and creative services professionals looking for a cost-effective way to add value and introduce new features to their designs. Additionally, the imagePRESS C1+ color digital printing system is suited for corporate environments wanting to add a watermark design to their documents which can be printed with clear toner.

Say it visually

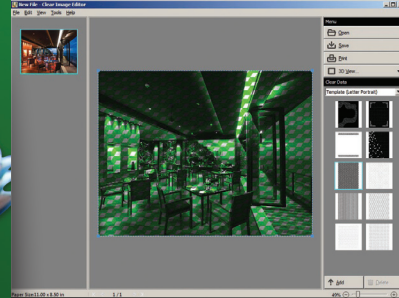
The imagePRESS C1+ color digital printing system’s large color gamut and smooth toner coverage, together with its ease of use and low cost, allow artists and designers to create ideas that preserve their craft and offer exciting new means to showcase their visual communication skills.

- **Remarkable image quality** at true 1200 x 1200 dpi resolution enables crisp and clear details plus solid and halftone colors that are consistent from page to page.
- **Media versatility** with the Media Library ensures that the substrate selection and the press are aligned to deliver the highest quality print on the greatest variety of media.
- **Innovative digital color** can sustain industry tolerances and specifications. Translate your concepts into full-color representations for your clients and their target audiences.

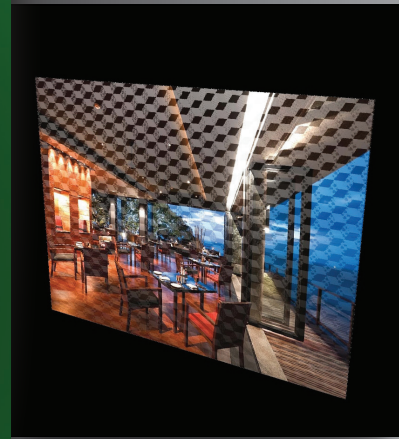


CREATE EXCITING IDEAS

CREATIVITY



CLEAR IMAGE EDITOR WORK MODE



CLEAR IMAGE EDITOR 3-D PREVIEW

Powerful tools to support your team.

Express ideas with more vibrancy, clarity, and texture than ever before.

Clear Toner

This amazing technology allows graphic designers to expand their palette and add visual texture to a design. From subtle, delicate suggestions to bold statements, these effects can help get your message across in a distinct way.

Create concepts that distinguish your craft and help to differentiate your work from that of your competitors. Canon's Clear Toner gives your team the clear advantage in creating ideas that sell!

It's now *effortless* to apply clear toner!

The Clear Image Editor is a software application that facilitates on-screen viewing of the effects of spot coating when printing using the Canon Clear Toner on the imagePRESS C1+. It also offers a 3-D viewing application that lets users rotate the printed piece under directional lighting in a simulated virtual space so that the user can view the coating effects from all angles prior to printing, thus saving time and money.

Clear Image Editor for imagePRESS C1+ can help all businesses embrace the exciting possibilities of clear-coat printing—effortlessly.

Print on media sizes up to 13" x 19"

Handles media weights from 17 lb.
Bond up to 140 lb. Index

V Toner

V Toner prints in vivid, page-popping colors while gradient shadows and skin tones are progressive and smooth. The 5.5 micron-sized droplets help make fine line details crisp and clear. This combination gives your digital prints an edge—and without the raised toner. Instead toner lays down smoothly and evenly, creating prints that look and feel like offset. Now you can confidently share the materials you've created—and exactly as intended—for both internal proofing and client presentations.

Paper is part of the message...

The ability to provide unique paper management with the Media Library is key with the imagePRESS C1+ color digital printing system. Standard with pre-programmed descriptions and the ability to customize 200 more, the imagePRESS C1+ color digital printing system doesn't limit your choices for the tactile component of your message. Flexibility to handle a wide range of media, from high rag contents to premium gloss-coated and textured stocks, is built into the core technologies, without being any more complicated for the end-user than choosing the name of the paper from a menu.

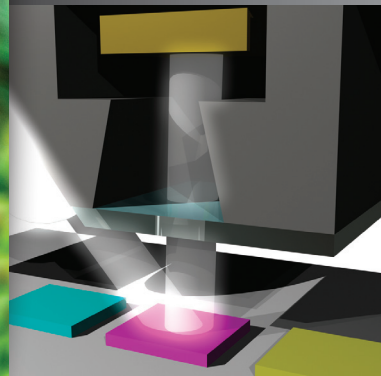
Integration with desktop color management solutions

Your creative team can feel secure with the imagePRESS C1+ color digital printing system, as it seamlessly integrates with all desktop color management solutions, supporting the Adobe® Creative Suite, QuarkXPress, and other applications. Printer drivers are Macintosh® and Windows® compatible. You can print what you see on your monitor with the imagePRESS C1+ color digital printing system, removing the hassle of outputting multiple prints to check that you get what you want.

IMAGE QUALITY



PRINT SAMPLES



AUTOMATIC REAL-TIME CALIBRATION

Don't be shy.

Show your true colors with confidence.

Color Consistency and Stability

Automatic Real-Time Calibration measures and maintains internal processes to ensure that your concept remains true, through the proof stage and into final production. You can rely on the stability and consistency of the imagePRESS C1+ color digital printing systems to give you prints as you intended them to be, time and time again.



Gloss Optimization

The imagePRESS C1+ color digital printing system's groundbreaking Gloss Optimization enables the highest quality color digital output that your team demands. Through three key innovations—particle size, Media Library, and fuser controls—the image you create and the image that's printed match the gloss of the selected media. The imagePRESS C1+ color digital printing system delivers color that's visually similar to offset press printed pieces.

- The small toner particle size allows you to tightly manage your color saturation by providing a wider color gamut of hues that can be reproduced with maximum accuracy. The result is that your campaign branding and prototypes match the color profiles, and your message is effectively communicated to both your creative team and your clients.
- The Media Library database lets you optimize the toner density page by page, depending on the type of stock you're using. You can program the name, weight, finish, and stock type you most frequently select into your own media database file. This provides maximum productivity and flexibility in printing the widest color gamut possible at all times. The toner will match the media chosen for printing.
- Fuser controls in the imagePRESS C1+ color digital printing system utilize the media database to discretely control heat and pressure applied on a medium-by-medium basis, ensuring the highest quality prints, regardless of the type of paper used. The belt and roller assembly operate at a lower temperature and, therefore, minimize shifts in tone.

VERSATILITY



PRINT THE DOCUMENTS YOU NEED



VERSATILE OUTPUT

Performance you can count on—for quality and value.

Powerful print controllers that match your needs to your budget.

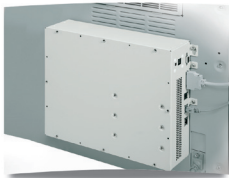
Three levels of control

The imagePRESS C1+ color digital printing system offers controllers that are able to cope with a range of jobs—from entry-level graphics and office documents to intensive graphic and variable data files. Three exceptional performance controllers are available for any demanding environment.



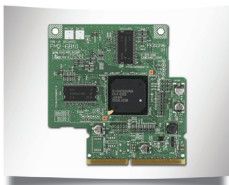
Canon imagePRESS Server Q2*

The most powerful controller for the imagePRESS C1+, the imagePRESS Server Q2 offers the highest performance for large, graphic-intensive files and color-critical jobs. The Graphic Arts package delivers features such as auto trapping to ensure correct image-to-image registration. For designs that contain clear toner elements, the imagePRESS Server Q2 is able to utilize a spot workflow from popular design applications such as Adobe® and Quark.



Canon imagePRESS Server T1*

This mid-level controller offers many functions in a single, high-performance system. The imagePRESS Server T1 delivers optimum performance for corporate, creative color, and light color production environments. It provides an advanced level tool set that includes Spot-On® Color Editor and auto trapping for high-end functionality.



Color UFR II/PCL/PS Kit-P2

For non-graphic centric environments that still require high-quality printing and color tools, this controller handles print jobs from Microsoft Office and Acrobat® documents coupled with imageWARE Prepress Manager.

SUSTAINABILITY



HIGH DE-INKABILITY



TONER RECYCLING PROGRAM

Conservation throughout the product life cycle.

Canon maximizes resource efficiency while contributing to a society that practices sustainable development.

A comprehensive approach

From R&D to design to manufacturing, Canon aims to control the impact its products have on the environment. It follows energy-efficient manufacturing processes, uses recycled materials, works to eliminate hazardous substances, and improves the energy efficiency of its products. With the Canon Color imagePRESS Series, you can feel good that you're operating your business in a more sustainable manner.

Recycled media

Some recycled paper stocks can be printed on the imagePRESS digital press, making it easy to find a stock that will meet customer requirements for both printing and sustainability. This is becoming increasingly important as companies implement sustainability policies for printed materials.

Media recycling and de-inkability

Independent tests from INGEDE give the Color imagePRESS Series a de-inkability score of 98, indicating an excellent ability to remove the toner from printed pages.

RoHS compliance

Like other Canon products, the imagePRESS digital press is compliant with RoHS (Restriction of Hazardous Substances) regulations and is also designed for complete recycling when it reaches end of life.

Consumables

Consumables don't include any VOCs or other harmful or toxic substances. All toner bottles are recyclable and recycling programs are available for customers who don't have appropriate local facilities.



Scan this QR code to see how the imagePRESS C1+ digital printing solution can help you differentiate and grow your business.

PRODUCT SPECIFICATIONS



MAIN UNIT

Technology:	Laser Electrostatic Transfer System
Developing System:	Dry Dual Component Developing System Auto Carrier Refresh
Acceptable Originals (MFP and Copier Model):	Sheets, Books, 3-Dimensional Objects (Up to 4.4 lb./2kg)
Max. Original Size:	11" x 17" (Ledger)
Copy/Print Sizes	
Cassette-Feeding:	Executive, Statement-R, Letter-R, Letter, Legal, 11" x 17", 12" x 18", 13" x 19"
Stack Bypass:	3-5/16" x 5-7/8" to 13" x 19" (100mm x 148mm to 330mm x 483mm)
Magnification	
Preset Reduction:	25%, 50%, 61%, 70%, 81%, 86%
Preset Enlargement:	115%, 122%, 141%, 200%, 400%
Zoom Mode:	25% - 400% (Between 25% and 400%, in 1% Increments)
Copy/Print Speeds (Letter):	Up to 14 ppm (Color)/Up to 60 ppm (B/W and Clear Only)
First-Copy Time:	7.6 Seconds (B/W), 14.1 Seconds (Color)
Warm-Up Time:	11 Minutes 40 Seconds Max. After Powering On (68°F/20°C)
Image Server Memory:	11 Minutes 40 Seconds From Sleep Mode 80GB HDD + 1.5GB RAM
Mail Box Features	
Max. Mail Boxes Supported:	100 User Inboxes
Max. Stored Documents:	1,500 per Inbox
Max. Stored Pages:	3,000 Pages with Full Color 6,000 Pages with B/W
Resolution	
Scanning:	600 x 600 dpi
Printing:	1200 x 1200 dpi (Continuous Tone)
Halftone:	256-Level Grayscale
Copy Exposure:	Automatic or Manual (9 Levels)
Paper-Feeding	
Standard:	550 Sheets Paper Drawers x 4 (2,200 Sheets: 20 lb. Bond/80gsm) Stack Bypass (100 Sheets: 20 lb. Bond) Paper Deck-AA1/AB1 (3,500 Sheets: 20 lb. Bond)
Optional:	
Acceptable Paper Weights	
Cassettes:	17 lb. Bond to 110 lb. Index (64gsm - 209gsm) and Transparency 17 lb. Bond to 140 lb. Index (64gsm - 256gsm) and Transparency
Stack Bypass:	Standard Automatic Trayless Duplexing
Duplexing:	
Multiple Copies:	1 to 999
Power Source:	120V AC, 60Hz (From Main Engine)
Power Plugs:	15A, 20A (Total Two Plugs for Main Unit)
Dimensions (H x W x D)	
(Printer/Reader, w/o UI):	41-3/8" x 33-5/8" x 35-5/8" (1042mm x 855mm x 898mm)
(Printer/Reader, with UI):	58-1/8" x 52-3/4" x 35-3/8" (1476mm x 1339mm x 898mm)
Weight (Printer/Reader):	Approximately 694 lb. (315kg)
Toner (Est. Yield @ 10% Coverage of Letter)	
CMYK:	16,000 Impressions/Bottle
Clear:	31,500 Impressions/Bottle - 1 Pass 22,500 Impressions/Bottle - 2 Pass

ACCESSORIES

Color Image Reader-H1 (Standard on MFP Model)

Image Sensor:	CCD
Originals:	Sheets, Books, 3-Dimensional Objects Up to 4.4 lb. (2kg)
Document Size:	Statement to 11" x 17" (139.7mm x 9.7mm to 297mm x 432mm)
Light Source:	Xenon Tube
Resolution:	600 x 600 dpi, 256 Gradations
Productivity:	Up to 80 ipm (300 dpi), Up to 50 ipm (600 dpi)
Power Source:	From Main Engine
Dimensions (H x W x D)	
(Excluding Document Feeder):	4-1/8" x 28-7/8" x 23-1/2" (105mm x 732mm x 595mm)
Weight	
(Excluding Document Feeder):	Approximately 38.5 lb. (17.5kg)

DADF (Duplexing Automatic Document Feeder)-R1*

Tray Capacity:	100 Sheets
Scanning Speed:	Up to 80 Sheets per Minute (Letter)
Acceptable Original Sizes:	Statement to 11" x 17"
Acceptable Paper Weight:	13 lb. Bond to 80 lb. Cover (50gsm to 216gsm)
Dimensions (H x W x D):	5-5/8" x 25-1/2" x 22-3/8" (143mm x 646mm x 569.5mm) (Excl. Document Output Tray)

Weight (Excluding Output Tray):	Approximately 47.3 lb. (21.5kg)
---------------------------------	---------------------------------

Side Paper Deck-AA1**

Paper Capacity:	3,500 Sheets (20 lb. Bond)
Paper Size:	Letter, Letter-R, Legal, 11" x 17", 12" x 18", 13" x 19"
Paper Weight	
Non-Coated Media:	17 lb. Bond to 140 lb. Index (64gsm to 256gsm)
Coated Media:	28 lb. Bond to 140 lb. Index (106gsm to 256gsm)
Dimensions (H x W x D):	22-1/2" x 23-5/8" x 24-1/2" (570mm x 601mm x 621mm)
Weight:	Approximately 112.4 lb. (51kg)

Side Paper Deck-AB1

Paper Capacity:	3,500 Sheets (20 lb. Bond)
Paper Size:	Letter
Paper Weight:	17 lb. Bond to 110 lb. Index
Dimensions (H x W x D):	22-5/8" x 12-7/8" x 23" (574mm x 326mm x 583mm)
Weight:	Approximately 68.3 lb. (31kg)

Finisher-AA1 and Saddle Finisher-AA2

Number of Trays:	3 Trays
Tray Capacity	
Non-Collate Mode	
Tray A:	250 Sheets (Letter, Statement-R, Executive) 125 Sheets (Legal, Letter-R, 11" x 17", 12" x 18", 13" x 19") 1,300 Sheets (Letter, Statement-R, Executive)
Tray B:	650 Sheets (Legal, Letter-R, 11" x 17", 12" x 18", 13" x 19") 2,450 Sheets (Letter, Executive) 1,700 Sheets (Statement-R) 650 Sheets (Legal, Letter-R, 11" x 17", 12" x 18", 13" x 19")
Tray C:	
Collate and Group Mode***	
Tray B:	1,300 Sheets (Letter, Executive) 650 Sheets (Legal, Letter-R, 11" x 17") 1,700 Sheets (Letter, Executive) 650 Sheets (Legal, Letter-R, 11" x 17")
Tray C:	
Staple Mode***	
Tray B/C:	1,300 Sheets/100 Sets (Letter, Executive) 650 Sheets/50 Sets (Legal, Letter-R, 11" x 17")
Max. Stapling Capacity Corner/Double:	50 Sheets (Letter, Executive) 30 Sheets (Letter-R, Legal, 11" x 17")
Saddle-Stitching (Saddle Finisher-AA2 Only) ¹	
Acceptable Paper Sizes:	Letter-R, Legal, 11" x 17", 12" x 18"
Capacity/Tray:	1 to 5 Sheets/25 Sets 6 to 10 Sheets/15 Sets 11 to 15 Sheets/10 Sets 15 Sheets
Max. Stapling Capacity/Set:	
Folding:	V-Fold
Dimensions (H x W x D):	43-3/8" x 25-1/2" x 25-7/8" (1102mm x 646mm x 656mm)
Weight	
Finisher-AA1:	Approximately 106.9 lb. (48.5kg)
Saddle Finisher-AA2:	Approximately 158 lb. (71.5kg)
Attachable Accessories:	Puncher Unit-M1

Puncher Unit-M1

(Option for Finisher-AA1/Saddle Finisher-AA2)**	
Max. Paper Weight:	17 lb. Bond to 140 lb. Index (64gsm to 256gsm, 106gsm to 256gsm for Coated Media)

Paper Sizes	
2-Hole:	Letter-R, Legal, Executive
3-Hole:	Letter, 11" x 17"
Punch Method:	Sequential Processing System (One Sheet at a Time)
Punch Dust Stock:	3,000 Sheets
Power Source:	From Main Unit
Dimensions (H x W x D):	32-3/4" x 4-1/4" x 24-1/4" (833mm x 107mm x 614.8mm)
Weight:	Approximately 15.4 lb. (7kg)

Color UFR II/PCL/PS Printer Kit-P2

Processor:	Canon Dual Custom Processors (Shared)
RAM:	1.5GB (Shared)
Hard Disk:	80GB (Shared)
PDL Support:	UFR II, PCL 5e, PostScript 3 Emulation
Std. Interface Connections:	10/100 Base-T (RJ-45), USB (2.0)
Network OS:	Windows 2000/XP/Windows Vista/Windows Server 2003/2008/Mac OS X/Citrix Metaframe

Color Universal Send Kit-G1

Color Mode:	Auto Color Select (Full Color/Grayscale) Auto Color, Select (Full Color/B/W), Full Color, Grayscale, B/W
Address Book Capacity:	Max. 1,800 Destinations (Includes 200 One-Touch Buttons), Max. 5 LDAP Servers
Sending Methods:	E-Mail, I-Fax, SMB, File Server, (FTP, IPX, WebDAV), User Inbox
Communication Protocol	
File:	FTP (TCP/IP), SMB (TCP/IP), NCP (IPX), WebDAV
E-Mail/I-Fax:	SMTP, POP3, I-FAX (Simple, Full)
Data Format	
File, E-mail:	TIFF, JPEG, PDF, PDF (Compact)** PDF (Trace & Smooth)** [†] , PDF (OCR)** [†] , Encrypted PDF, Digital Signature PDF (Device [▲] , User ^{▲▲})
I-Fax:	B/W: TIFF (MH, MR, MMR) Color: TIFF (Profile-C)

Additional Accessories

- Access Management System Kit-A2
- ADF Access Handle-A1^{▲▲▲}
- Barcode Printing Kit-A1
- Braille Label Kit-E1
- Card Reader-C1[▲]
- Card Reader Attachment-E1
- Cassette-AE1
- Clear Image Editor^{△△}
- Digital User Signature PDF Kit-A1^{△△△}
- Document Tray-J1
- Encrypted Secure Print Software-C1[▲]
- HDD Data Encryption Kit-B1[■]
- HDD Data Encryption Kit-B6[■]
- HDD Data Erase Kit-C1[◆]
- imagePRESS Server T1^{◆◆}
- imagePRESS Server Q2^{◆◆}
- imageWARE Suite
- Key Switch Unit-A2
- Platen Cover Type K^{◆◆◆}
- Remote Operators Software Kit-B1
- Secure Watermark-A1
- Staple Cartridge-D2
- Staple Cartridge-J1
- Stack Bypass Tray-B1
- Universal Send PDF
- Advanced Feature Set-A1^{△△△}
- Universal Send PDF
- Security Feature Set-A1^{△△△}
- Voice Guidance Attachment-B1
- Voice Guidance Kit-B1[◆]
- Web Access Software-E1[■]
- Workflow Composer-B4

* Power Supply Unit-S1 (for imagePRESS C1+) is included.

** Requires power outlet independently.

*** Up to 11" x 17"

† Up to 12" x 18"

‡ When configured on the imagePRESS C1+, requires Universal Send PDF Advanced Feature Set-A1.

▲ When configured on the imagePRESS C1+, requires Universal Send PDF Security Feature Set-A1.

▲▲ When configured on the imagePRESS C1+, requires Digital User Signature Kit-A1.

▲▲▲ Requires DADF-R1.

△ Requires Card Reader Attachment-E1.

△△ Install on PC with Windows Vista or higher. Graphics card must support OpenGL 3.0. Requires imagePRESS Server Q2 v2 or T1 v2 to print clear data.

△△△ Requires the Color Universal Send Kit-G1.

◆ Cannot be installed with the imagePRESS Server Q2/T1 V2.

◆ Check which HDD is equipped on the Marking Engine.

◆ HDD Data Encryption Kit-B1 is required for installation.

◆◆ Check with your local Canon Authorized Dealer for availability.

◆◆◆ Cannot be installed with the DADF-R1.

□ Voice Guidance Attachment-B1 is required for installation.

PANTONE and other Pantone, LLC. trademarks are the property of Pantone, LLC. CANON, IMAGEPRESS, and IMAGERUNNER are registered trademarks of Canon Inc. in the United States and may also be registered trademarks or trademarks in other countries. IMAGEWARE is a registered trademark of Canon U.S.A., Inc. in the United States and is a trademark of Canon Inc. in certain other countries. IMAGEANYWARE is a trademark of Canon. All other referenced product names and marks are trademarks of their respective owners and are hereby acknowledged. Some items may not be available at this time; please check for availability. Specifications and availability subject to change without notice.

©2013 Canon U.S.A., Inc. All rights reserved. All screen and printer output images are simulated.

Federal Law prohibits copying of certain documents. Violators may be subject to penalties. We suggest that you check with your own legal counsel. Canon U.S.A., Inc. and Canon Canada, Inc. intend to cooperate with Law Enforcement Agencies in connection with claims of unauthorized copying.

0162W268
1212RA-IP C1+ 5.5M-LDM



Canon
imageANYWARE

