

**Canon**

imagePRESS  
Server

**T1**

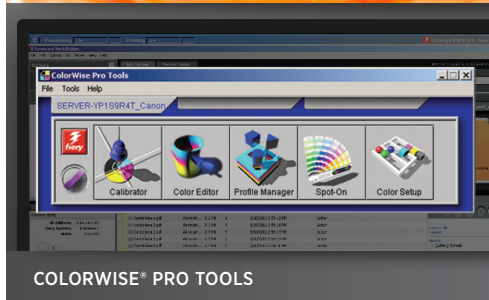


**CREATE**





# PERFORMANCE



COLORWISE® PRO TOOLS



SUPPORT FOR VARIABLE DATA PRINTING



CUSTOMIZE A PAPER CATALOG

## Graphic Arts Solution imagePRESS® Server T1

For outstanding performance, seamless network integration, and color quality in a variety of print environments, count on the imagePRESS Server T1 for the imagePRESS C1+ color digital printing system.

### Exceptional Color and Productivity

From corporate workgroups and small/medium businesses to print-for-pay and creative groups, the imagePRESS Server T1 is an intuitive and productive document workflow and printing solution. With exceptional usability, simplified workflow, comprehensive color management, and support for variable data printing (VDP) with Fiery® FreeForm™, the imagePRESS Server T1 comes standard with powerful utilities, making it a potent solution for any printing task. Applications like Hot Folders and Virtual printers take automated printing to the next level. Users can “drag-and-drop” files into Hot Folders that are preconfigured with job-specific print settings for guaranteed results. Files can also be put into virtual printers, performing specific tasks that have been preconfigured by the system administrator.

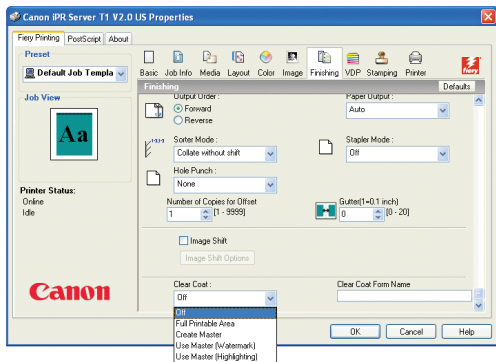
### Color

The imagePRESS Server T1 features EFI® In-RIP color management system, ColorWise, with standard-setting color tools and user flexibility. For both skilled and novice users, ColorWise delivers great “out-of-the-box” color that’s consistent across applications, computer platforms, color spaces, and color file formats. Automated functionality and expert controls for managing color, productivity, and automating color document workflow make professional-looking results quickly and easily.

For experts, the ColorWise tools are the ultimate, offering a complete and powerful system for unprecedented color control in fine tuning, including ICC profile support, color editing, AutoGray, and support for device link profiles. The AutoGray function automatically adjusts gray balance based on measurement page placed on the imagePRESS C1+ system’s optional Color Image Reader-H1. As a result, color printing and graphic arts professionals can achieve the accuracy and performance needed to produce consistent color of extraordinary quality. For advanced users, imagePRESS Server T1 supports device link profiles so operators can use their own color management technology to dictate precise color conversions and output quality between a color space and imagePRESS C1+ color digital press.

## Clear Toner

The imagePRESS Server T1 has the ability to print clear toner using the Form Overlay feature. This gives users the capacity to add clear toner designs, such as watermarks, floods, and accents to a document.



Clear Coat section of Fiery Driver properties screen.

## Productivity

The imagePRESS Server T1 is a robust utilization of Fiery SMART RIP technology, productivity tools, and logical workflows that drive increased performance. An intelligent path through image and graphic-rich files dramatically increases speeds when printing Microsoft® Office and Adobe® applications. The RIP-and-Print utility drives up to 30% more pages (per time period) through printers in demanding environments.

## Fiery Impose® Productivity Tool

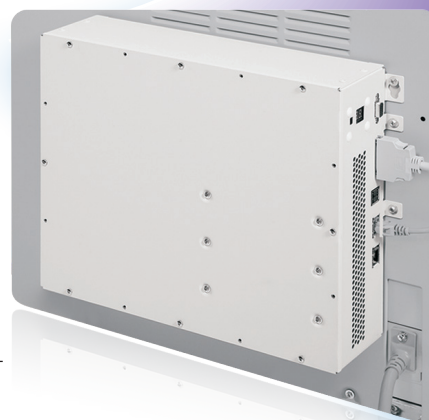
Easy to use and versatile, the Impose option offers an intuitive WYSIWYG imposition solution for large or complex documents. With Impose, operators can view thumbnails and full-screen previews, edit non-native files, add or delete pages, and preflight to check for errors before RIPping. Imposed jobs can be archived as PDF files to either the disk or server for future printing, and can be sent to customers remotely to shorten the proofing cycle. Predefined imposition templates speed imposition, and an unlimited number of custom templates can be created and saved. Impose can also be used for VDP jobs, managing them with the same ease as non-VDP jobs. Impose's architecture and workflow offer greater control during later stages of document production.

## Security

The imagePRESS Server T1 incorporates strong security utilities, ranging from access limitation to securing the data itself. Administrators can set general authentications, disable network ports and services, set IP filtering, and implement supporting anti-virus software. With optional features like Secure Erase, administrators and users are able to enhance security by erasing data stored on the controller's hard drive, thus employing an overwriting protection scheme to erase all traces of deleted information for optimal security in any setting.



imagePRESS Server T1 installed on the back of the imagePRESS C1+ color digital press.



## Printer Compatibility

- imagePRESS C1+

## Software Version

- v2

## CPU

- Intel® Celeron® M @ 1.5GHz

## System Memory

- 256MB SDRAM (Upgradeable to 512MB)

## Hard Disk Capacity

- 80GB Hard Disk

## Color Management

- ColorWise Pro Tools
  - Fiery Print Calibrator-Easy Calibration
  - Color Editor-Customizing Curves
  - Profile Manager-Supporting ICC Profiles and Device Links
  - Color Setup-Default Color Settings
  - Spot-On®
- Color Charts and Reference Pages
- RGB Separation
- Spot Color Management
- Automatic Black Overprinting
- Independent RGB, PANTONE®, and CMYK Controls
- Pure Black Text/Graphics
- Gray Component Replacement (GCR)
- Spot Color in PDF
- Image Smoothing
- Mac® OS X® Support

## Language/Fonts

- 136 Adobe Type 1 Roman PostScript® Scalable Fonts

## Networking/Connectivity

- LDAP Support
- Certificate Management
  - SSL/TLS
- IP Sec Support
- IPv6 Support
- Simultaneous Auto-switching Protocols
- EtherTalk® II
- TCP/IP
- Novell® IPX/SPX™
- Autosensing Ports
  - RJ-45 for On-Board 10/100/1000Base-T and 10/100Base-T
- Automatic IP Configuration SNMP Printing Support
- AppleTalk®
- Pserver
- SMB (peer-to-peer)
- Bonjour

## Page Description Language

- Adobe PostScript® 3™
- Enhanced PCL 6PCL 5c Emulation

## Resolution

- Up to 600 dpi\* and 1200 dpi

## Scanning

- Fiery Scan and Fiery Remote Scan (RDF Support) TWAIN Compliant Plug-in Module for Adobe Photoshop® (Macintosh® and Windows®)
- Capable of Scanning Up to Tabloid Size at 600 x 600 dpi
- Scan-to-E-mail
- Scan-to-Command WorkStation®
- Scan-to-Mail Box
- Scan-to-Disk
- Scan-to-FTP
- Scan-to-Internet/Fax

## Security

- IP Filtering
- Port Filtering
- Secure Erase (Optional)

## Utilities

- WebTools™
- Fiery Scan and Fiery Remote Scan
- Fiery FreeForm
- Enhanced Job Log
- Fiery Driver
- Command WorkStation Software Kit
- Member Printing
- EFI Job Monitor
- Paper Catalog
- Fiery Bridge
- Job Mismatch

## Graphic Arts Features

- Hot Folders
- Virtual Printers
- Spot-On
- Auto Trapping

## Press Simulation

- Quick Simulation-Adjusts Toner Density
- Full Simulation-Adjusts Toner Density and Hue
- Full Simulation with GCR
- Support for SWOP, Euroscale, DIC Printing Standards, and Others through ICC Profiles
- Support for Custom Simulation Targets
- Simulation on a Per-Job Basis

## Calibration

- Default Calibration for Great Out-of-the-Box Color
- ColorCal (w/Autogray)
- AutoCal 2

## Optional Hardware/Software

- SeeSequence Impose
- Secure Erase
- 256MB Option Memory Kit
- X-Rite® i1® Spectrophotometer

\* PCL 5c only supports 600 dpi.

**Canon**  
*image*ANYWARE



Scan this QR code with your smartphone to learn more about Canon production solutions.

PANTONE® and other Pantone, LLC trademarks are the property of Pantone. CANON and IMAGEPRESS are registered trademarks of Canon Inc. in the United States and may also be registered trademarks or trademarks in other countries. IMAGEANYWARE is a trademark of Canon. All other referenced product names and marks are trademarks of their respective owners and are hereby acknowledged. Some items may not be available at this time; please check for availability. Specifications and availability subject to change without notice. All printer output images are simulated. imagePRESS C1+ device shown with optional equipment.

©2013 Canon U.S.A., Inc. All rights reserved.

1212RA-ServerT1-PDF-SP

1-800-OK-CANON  
www.usa.canon.com

Canon U.S.A., Inc.  
One Canon Park  
Melville, NY 11747