

Canon

**imagePRESS
CR Server**

**A7500
A7000**



STAND OUT

STANDOUT QUALITY



PRODUCE SUPERB COLOR AND IMAGES

UNIFY DIGITAL AND OFFSET WORKFLOWS

SAVE COSTS WITH JOB CONTROL TOOLS

Excellent image quality. Powerful productivity. True workflow integration.

To compete in today's world, you need more than the ability to control color and quality. You need a highly productive workflow that delivers the best possible performance from your Canon imagePRESS® digital press.

Exceptional Performance.

Creo Color Servers are renowned for powerful processing, compatibility, versatility, and color consistency. These features let you handle more jobs with increased productivity, improved flexibility, and optimal image quality.

For the first time, Canon is offering two **Creo** Color Server choices, the imagePRESS CR Server A7000 and A7500, with each delivering the full power of its inherent capabilities to commercial printers, quick print shops, and in-plant operations.

imagePRESS CR Server A7500

- For high-speed, demanding graphic arts printing and complex VDP.

imagePRESS CR Server A7000

- For more accessible, high-quality static and variable production.

Powerful Controls. Optimal Image Quality.

The proof of every print shop's work is delivering excellent printed materials and value-added services. Canon imagePRESS Servers powered by **Creo** Color Server Technology provide superb color and image controls to ensure that virtually every image you print meets customer demands across a wide range of documents and applications.

| FEATURE | BENEFIT |
|---|---|
| Superb Color Quality/Fidelity | True-to-life colors that meet the demands of critical applications in commercial, quick print, and corporate environments. |
| Photo Touch-up Tools* | Easily correct red-eye, sharpen images, adjust shadows and highlights, change exposure, and reduce noise to optimize images before printing. |
| Predefined Color Sets for Simplified Setup | Readily select from predetermined setups that optimize quality based on different applications, such as photos of people, outdoor scenes, corporate documents, etc. |
| Spot Color Editor/Variations Tool | This allows visual comparison for fine-tuning spot color values. It helps ensure spot color accuracy and consistency page after page, run after run, job after job. |
| Fogra Certification | Servers are independently tested for color accuracy, quality, and repeatability with the Color imagePRESS Series. |

Workflow Integration

Bridging the gap between offset and digital presses is one of the most critical steps in creating optimal workflows. Take control of your mixed work environments with automation that manages offset and digital jobs with a simplified, central workflow built to ensure that they run accurately and on schedule.

| FEATURE | BENEFIT |
|--|--|
| Built-in JDF Support | JDF job ticketing automates job requirements such as paper tray selection, along with finishing options such as stapling, punching, and saddle-stitching. This automation increases accuracy and throughput, improves staff utilization, and can help reduce time and labor costs. |
| Near-line Finisher Support with JDF Integration | JDF finishing automation extends to selected near-line finishing devices, simplifying setup while enhancing accuracy and streamlining production. |
| Hybrid Integration with Kodak Prinergy and Other Prepress Systems | Tight integration between Creo Color Servers and many prepress systems, such as Kodak Prinergy, centralizes job management and enables jobs to be easily directed to the most appropriate press. It also provides complete automation, from online ordering to digital or offset output, speeding throughput and helping to reduce costs. |
| Variable Data Capabilities | Easy VDP provides an ideal entrée to a full range of profitable variable content applications. Get started with predefined, ready-to-use templates in Easy VDP file Creator. Then take advantage of advanced VDP capabilities and formats, including VPS, Optimized PDF, Optimized PostScript®, PPML, VDX, and PostScript®. |



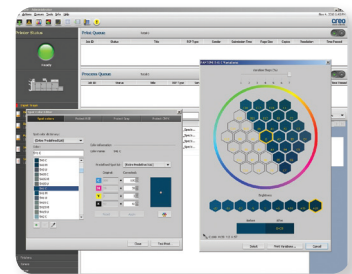
Canon imagePRESS CR Server A7500 Workstation

Increased Revenues. Impressive Efficiency.

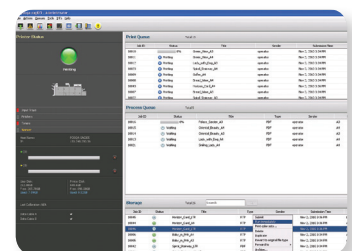
Every print service provider seeks to be more efficient to save costs and increase revenue. Canon imagePRESS Servers powered by **Creo** Color Server Technology help you meet tight deadlines and produce more work in less time with powerful job control tools and greater throughput.

| FEATURE | BENEFIT |
|--|---|
| Ready-to-Print (RTP) Format | RTP files arrive ready to run yet can still be fine-tuned and printed without re-RIPing the file. Even corrections to images and colors can be made without re-RIPing, saving time and labor while keeping jobs running on schedule. |
| Hot Folders/Virtual Printers Enhance Ease of Use | Define a job's settings just once for imposition, perfecting, color management, finishing, etc., then repeat it automatically with preset workflows. |
| Parallel RIPing* | Processing two jobs simultaneously dramatically reduces processing cycles. More jobs can be produced per shift with less downtime for operators and presses. |
| Canon Customer Productivity (CPP) Operator Maintenance Software | Easy access to illustrated step-by-step maintenance procedures directly on the RIP for customers enrolled in the CPP program. This not only increases operators' value, but can also help reduce downtime and service calls and increase uptime and press productivity. |
| SMS and E-mail Notifications on Press Status | Knowing press status helps keep busy production operations running at optimal efficiency. |

*Process Power Pack is standard on imagePRESS CR Server A7500; optional on imagePRESS CR Server A7000.



Spot Color Editor



Job Management

| | A7500 | A7000 |
|--------------------------------------|--|--|
| Printer Compatibility | Canon imagePRESS C7010VP/C6010VP/C6010 | Canon imagePRESS C7010VP/C6010VP/C6010 and C7000VP/C6000VP/C6000 |
| Software Version | 2.0 | 2.0 |
| CPU | Intel i7 860 Quad Core, 3.46GHz,* 8MB, 1333MHz | Intel Core2 Quad, 2.66GHz, 6MB, 1333MHz |
| Overall Memory | 5GB (2GB System, 3GB Image) | 5GB (2GB System, 3GB Image) |
| Hard Disk Configuration | Total: 1.5TB 500GB User Disk 1000GB Printer (Image) Disk | Total: 1.0TB 250GB User Disk 750GB Printer (Image) Disk |
| Fusion Boards | Creo Color Server Fusion CS2 Board | Creo Color Server Fusion CS2 Board |
| Ports | 6 x USBs 1 Serial Port 2 Ethernet Ports | 6 x USBs 1 Serial Port 2 Ethernet Ports |
| Color Measurement Device | X-Rite i1 Spectrophotometer | X-Rite i1 Spectrophotometer |
| Hardware Accessories | Mouse, Keyboard, Stand, and 19" Flat Monitor | Mouse, Keyboard, Stand, and 19" Flat Monitor |
| Process Power Pack | Included | Optional |
| File Formats Supported | PostScript 1,2,3, VPS, PPML 2.2, VDX, EPS, PDF Version 1.3-1.7, JPEG (except Progressive JPEG and JPEG 2000), TIFF6.0 (except 16-bit TIFF), JDF, PDF-X1a, CT (all versions), LW (all versions) | |
| Operating Software | Microsoft Windows XP Professional Edition | |
| Network | Ethernet 10/100/1000Base-T 802.1x Authentication | |
| Macintosh Utilities | Creo Server Print Driver Installer, Creo Color Server Job Ticket Software | |
| PC Utilities | Creo Color Server Job Ticket Creator, Microsoft Office HotFolder, Remote Site Manager, Color Server Auto Update Tool, Net Test Tool, POD Check Tool, Task Monitor Tool | |
| Creo Web Resource Center | Utilities, PPDs, Easy VDP File Creator, Color Profiles, Vendor Links | |
| Third-Party Software | Microsoft SQL Server Desktop, Adobe Acrobat 9.0 Standard, ATI Display Driver, Color Server UI, MSXML, Nero Express 6, Java Runtime Environment (JRE), Adobe InDesign Server (Limited Use Version), Enfocus PitStop Edit (Adobe Acrobat Plug-in), Supero Doctor III, Norton Ghost | |
| Power Supply | 115V/15A | 115V/15A |
| Server Dimensions (H x W x D) | 17.6" x 7.4" x 21.7" | 17.3" x 7.9" x 23.1" |
| Weight | 36 lb. | 37.6 lb. |

* Configured to work in Turbo Boost Mode, raising the frequency to 3.46GHz.

Canon
*image*ANYWARE



Scan this QR code with your smartphone to learn more about Canon production solutions.

CANON and IMAGEPRESS are registered trademarks of Canon Inc. in the United States and may also be registered trademarks or trademarks in other countries. IMAGEANYWARE is a trademark of Canon. All other referenced product names and marks are trademarks of their respective owners and are hereby acknowledged. Some items may not be available at this time; please check for availability. Specifications and availability subject to change without notice. All printer output images are simulated.
 ©2013 Canon U.S.A., Inc. All rights reserved.

Federal Law prohibits copying of certain documents. Violators may be subject to penalties. We suggest that you check with your own legal counsel. Canon U.S.A., Inc. and Canon Canada, Inc. intend to cooperate with Law Enforcement Agencies in connection with claims of unauthorized copying.



1-800-OK-CANON
www.usa.canon.com

Canon U.S.A., Inc.
 One Canon Park
 Melville, NY 11747

