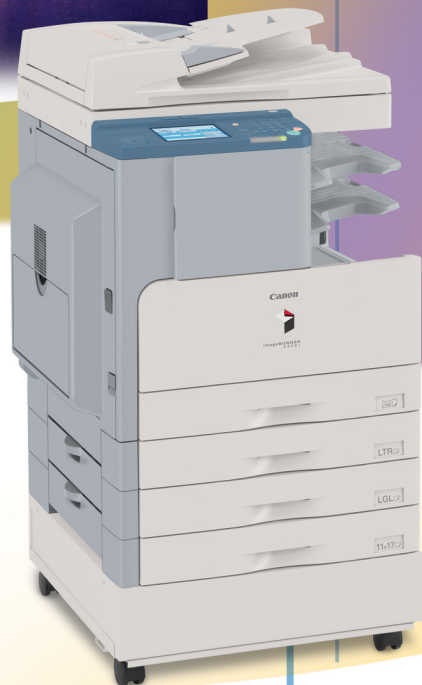


Canon



WORKGROUP SOLUTIONS



imageRUNNER®
2020 / 2016 SERIES

WORKGROUP SOLUTIONS

HIGH-END PRODUCTIVITY COMES TO LOW VOLUME

Powerful Canon Systems Designed to Help Every Business Produce Documents and Share Information Efficiently.



 **imageRUNNER®**
2020 / 2016 SERIES

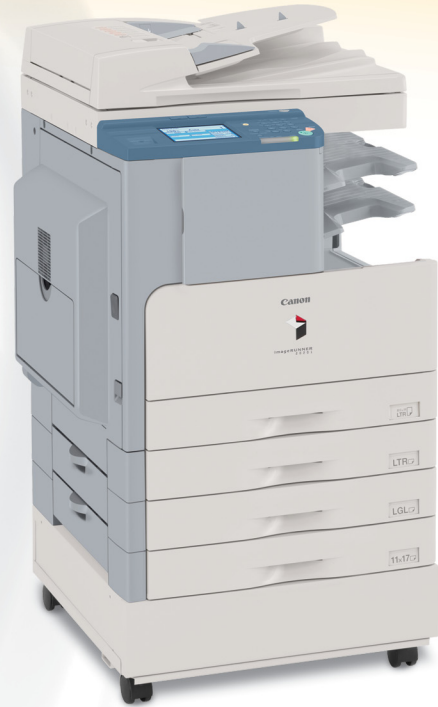
The advantages of digital multifunction technology are more apparent than ever before. You need a solution to meet the daily challenges faced in an increasingly sophisticated communications environment.

Now you can have it with the imageRUNNER® 2020/2016 and the imageRUNNER 2020i/2016i devices, Canon's solutions for busy workgroups and small businesses. Producing laser-sharp output at speeds of up to 20 and 16 pages per minute (letter), respectively, these compact imageRUNNER devices can deliver the benefits of digital copy, network print, and fax features, along with innovative technologies that will help your business save time, space, and most of all, document production and distribution costs.

So whether you're a growing company or a corporate workgroup stretched to capacity, Canon has the tools you need to create and distribute the information that fuels your business.

imageRUNNER 2020/2016

The imageRUNNER 2020/2016 base models deliver digital copying, network printing, and optional faxing to meet the needs of small workgroups requiring basic yet expandable functionality.



imageRUNNER 2020i/2016i Control Panel



imageRUNNER 2020/2016 Control Panel

imageRUNNER 2020i/2016i

For more sophisticated users, the advanced imageRUNNER 2020i/2016i models build upon the capabilities of the base models to provide fully-integrated color communication features and a complete suite of functionality.

Feature	imageRUNNER 2020/2016	imageRUNNER 2020i/2016i
Memory Capacity (Standard/Maximum)	128MB/256MB	256MB/256MB
Copy	Standard	
Print	Standard (Canon UFR II LT) Optional (PCL)	Standard (Canon UFR II LT/PCL)
Fax	Optional	
Color Send	N/A	Standard
Document Feeder	Optional	Standard
Duplexing	Optional	Standard

All models ship standard with USB 2.0 and 10/100Base-TX Ethernet connectivity.

MULTIFUNCTION CONVENIENCE IN A COMPACT DESIGN

Versatile and expandable, the imageRUNNER 2020/2016 base models allow you to build a system to meet your business needs.

imageRUNNER 2020/2016

Simple to program and maintain, the imageRUNNER 2020/2016 base models ensure that each document is reproduced with accuracy. Every original is scanned at 600 x 600 dpi for copies that are amazingly faithful to the original. A host of image and document manipulation features can be accessed through the user-friendly control panel, making it easy to produce professional-looking documents the first time, every time. And to ensure that users are not kept waiting to make copies, Canon's RAPID Fusing System™ helps speed warm-up times while keeping energy consumption costs to a minimum.

PRODUCTIVE NETWORK PRINTING

With their standard USB 2.0 and 10/100Base-TX Ethernet interfaces, the imageRUNNER 2020/2016 devices are easy-to-use printers that provide users with complete access to available paper supplies and finishing modes. Printed pages are output at true 1200 x 1200* dpi print resolution to ensure superior image quality. Canon's innovative Ultra Fast Rendering (UFR II LT) printing technology comes standard to provide fast document processing, plus there's optional support for PCL 5e/6 page description languages. An optional duplexing unit provides two-sided printing, so you can save paper costs too.

SUPER-FAST FAXING

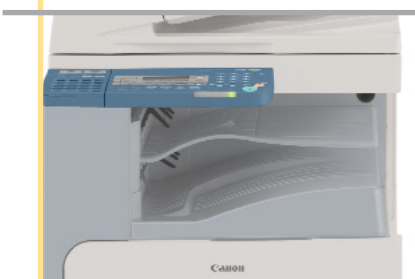
Configure your imageRUNNER 2020/2016 device with the optional Super G3 Fax Board to handle all your faxing needs. Users have access to one-touch speed-dial keys, a high-capacity Address Book, and a host of memory features that expedite your work. Plus, Canon's fax driver allows employees to fax documents from their computers for ultimate efficiency.

CONSIDERABLE CONFIGURATION FLEXIBILITY

Besides allowing you to copy, print, and fax documents, the imageRUNNER 2020/2016 models provide easy maintenance and extensive document-handling options. High-yielding supplies and consumables help keep running costs and downtime to a minimum for top-notch efficiency. You can take advantage of an optional 50-sheet Duplexing Automatic Document Feeder to relieve document handling chores. For lengthy job runs, each model can be equipped with up to five paper sources and support a maximum paper capacity of up to 1,080 sheets. The imageRUNNER 2020/2016 models also support a range of integrated output options that neatly collate and provide stapled document sets for immediate distribution.



Paper Supply



Inner 2-Way Tray-E1



Finisher-U1 with Additional Finisher Tray

* Canon UFR II LT only. Requires 256MB RAM.

EVERY DOCUMENT REPRESENTS THE IMAGE OF YOUR BUSINESS...MAKE EVERY ONE COUNT

Whether you're working with hard copies or electronic files,
you'll make a great impression with the advanced imageRUNNER 2020i/2016i models.

imageRUNNER 2020i/2016i

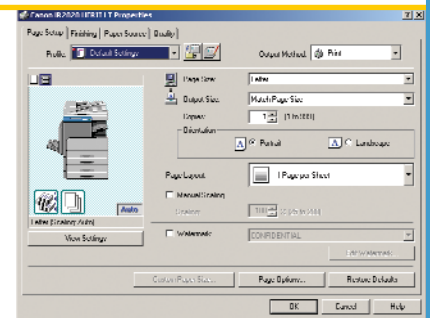
The advanced imageRUNNER 2020i/2016i models build upon all the capabilities of the imageRUNNER 2020/2016 base devices, offering automatic duplexing and document feeding, a large LCD touch-screen user interface, expanded memory capacities, and PCL printing as standard. Plus, the imageRUNNER 2020i/2016i devices go even further to support full-color send capabilities, so you can streamline costs and improve communications.

POWERFUL DOCUMENT DISTRIBUTION—IN COLOR!

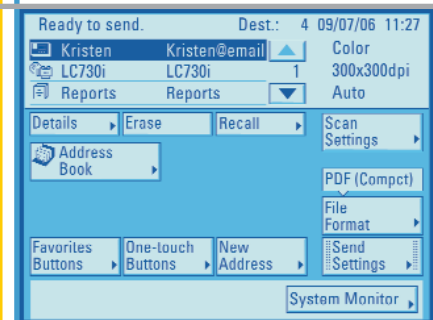
Take advantage of your network infrastructure and speed your business communications with the imageRUNNER 2020i/2016i models' powerful suite of black-and-white and full-color document distribution capabilities. Scan and send documents to individual or group e-mail addresses, to a file folder on a network or desktop, or as an I-fax over the Internet in one time-saving step. You'll streamline costs and save time by sending documents to multiple destinations instantly in popular PDF, TIFF, or JPEG file formats. And, with Canon's innovative PDF High Compression Mode, you don't need to worry about full-color documents clogging your network. This feature minimizes file sizes while maintaining image quality, so you and your recipients can easily work with scanned color documents.

EASY TO MANAGE

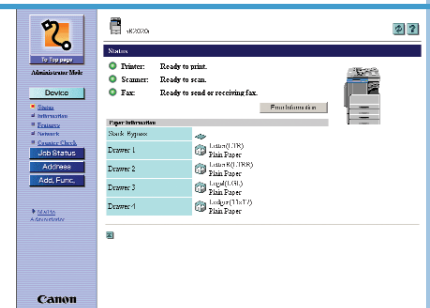
Canon provides a complete suite of device management and monitoring utilities such as Canon's imageWARE™ Enterprise Management Console (EMC), a web-based utility that helps facilitate centralized management of networked devices. Plus, every imageRUNNER system is bundled with Canon's browser-based Remote UI utility to provide real-time system monitoring and status information, so every user can make intelligent decisions right from the desktop. And, with their energy-saving features, the imageRUNNER 2020/2016 Series devices are ENERGY STAR® qualified systems.



UFR II LT Print Driver

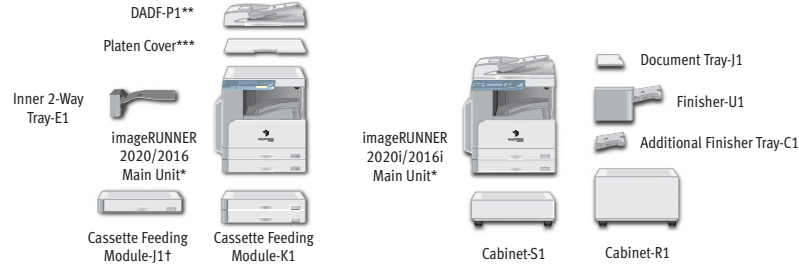


Send Main Menu



Remote UI

SPECIFICATIONS



MAIN UNIT

Type:	Monochrome Digital Multifunction Imaging System
Imaging System:	Laser Dry Electrostatic Transfer
Developing System:	Dry Single-Component Projection
Fixing System:	RAPID Fusing System
Image Server Memory (Std./Max.)	128MB/256MB RAM
2020/2016:	256MB/256MB RAM
2020i/2016i:	11" x 17"
First-Copy-Out Time:	7.9 Seconds from Platen Glass
	13.5 Seconds from Feeder
Warm-Up Time:	1 Second or Less from Sleep Mode ^{††}
	13 Seconds or Less from Main Power Off ^{††}
	(2020/2016) ^{††}
	25 Seconds or Less from Main Power Off
	(2020i/2016i) ^{††}
Copy/Print Speed:	
2020/2020i:	Up to 20 ppm (Letter)
2016/2016i:	Up to 16 ppm (Letter)
Maximum Original Size:	11" x 17"
Maximum Copy Size:	11" x 17"
Minimum Copy Size:	3-3/4" x 5-7/8"
Acceptable Originals:	Sheets, Books, and 3-Dimensional Items
	(Up to 4-3/8 lb.)
Multiple Copies:	1 to 99
Max. Copy Reservation:	5 Jobs
Scan Resolution:	600 x 600 dpi
Copy Resolution (Enhanced):	1200 x 600 dpi
Print Resolution	
2020/2016:	600 x 600 dpi (Std.) 1200 x 1200 dpi (Opt) [*]
2020i/2016i:	1200 x 1200 dpi (Std.) [*]
Halftone:	256 Levels
Automatic Trayless Duplexing	
2020/2016:	Optional
2020i/2016i:	Standard
Magnification:	50% to 200% (In 1% Increments)
Preset Reduction:	50%, 64%, 73%, 78%
Preset Enlargement:	121%, 129%, 200%
Exposure Control:	Automatic or Manual (9 Levels)
Document Feeding	
2020/2016:	Optional 50-Sheet DADF
2020i/2016i:	Standard 50-Sheet DADF
Standard Paper Capacity	
2020/2020i:	2 x 250+80 Bypass (Total 580 Sheets)
2016/2016i:	1 x 250+80 Bypass (Total 330 Sheets)
Maximum Paper Capacity:	1,080 Sheets
Acceptable Paper Weight:	17 lb. to 24 lb. Bond (Cassette)
	17 lb. to 32 lb. Bond (Bypass)
Power Requirements:	120V AC, 60Hz, 4.6A
Power Consumption:	1.55kW (Max.)
Toner Yield:	8,300 @ 6% Coverage

Printing Specifications

CPU:	Canon Custom Processor—Shared
Memory	
2020/2016:	Shared with Main Unit—128MB Std./256MB Max. (with PCL Printer Kit-J1)
2020i/2016i:	Shared with Main Unit—256MB Std.
PDL Support	
2020/2016:	UFR II LT (Std.)
	PCL 5e/6 (Opt. with PCL Printer Kit-J1)
2020i/2016i:	UFR II LT, PCL 5e/6 (Std.)
Standard Interfaces:	10/100Base-TX (RJ-45), USB 2.0 High Speed
Network Operating Systems:	Novell® NetWare® v. 5.1, 6, 6.5
	Windows® 98/Me, Windows NT®
	4.0/2000/XP/Server 2003 (TCP/IP)
	Apple® Macintosh® OS X or Higher ^{***}

Send Capabilities^{***}

Sending Methods:	E-Mail, I-Fax, Super G3 Fax (Opt.), File Server (FTP, SMB)
Address Book:	500 Destinations (including 200 One-Touch Buttons)
File Formats	
Black and White:	TIFF, PDF
Color:	JPEG, PDF Compact
Sending Sizes:	Statement to 11" x 17"

ACCESSORIES

Duplexing Automatic Document Feeder-P1^{**}	
Paper Capacity:	50 Sheets (Letter, Letter-R, Statement)
Acceptable Original Sizes:	Statement to 11" x 17"
Acceptable Paper Weights:	10 lb. to 32 lb. Bond (One Sheet)
	14 lb. to 28 lb. Bond (Multiple Sheets)
Document Scanning Speed:	20 Sheets/Minute (Letter)
Cassette Feeding Module-J1 (Optional)[†]	
Paper Capacity:	1 x 250-Sheet Paper Cassette
Acceptable Paper Size:	11" x 17", Legal, Letter, Letter-R, Statement
Acceptable Paper Weight:	17 lb. to 24 lb. Bond
Cassette Feeding Module-K1 (Optional)	
Paper Capacity:	2 x 250-Sheet Paper Cassettes
Acceptable Paper Size:	11" x 17", Legal, Letter, Letter-R, Statement
Acceptable Paper Weight:	17 lb. to 24 lb. Bond
Inner 2-Way Tray-E1 (Optional)	
Number of Trays:	Two
Acceptable Paper Size:	Statement to 11" x 17"
Tray Capacity	
Upper Output Tray:	100 Sheets (Letter), 50 Sheets (Other Sizes)
Lower Output Tray:	250 Sheets (Letter), 100 Sheets (Other Sizes)

Finisher-U1 (Optional)

Number of Trays:	One (Second Tray Optional)
Tray Capacity	
Single Tray:	770 Sheets (Letter/Statement-R)
	380 Sheets (Letter-R, Legal, 11" x 17")
With Additional Finisher Tray-C1:	200 Sheets Each Tray (Letter/Statement-R)
	150 Sheets Each Tray (Letter-R, Legal, 11" x 17")
Staple Position/Size:	
Top Left Corner:	11" x 17" (Landscape), Legal (Landscape), Letter, Letter-R
Top Right Corner:	11" x 17" (Portrait), Legal (Portrait)
Max. Stapling Capacity:	Up to 50 Sheets (Letter)
	Up to 30 Sheets (Letter-R, Legal, 11" x 17")
Attachable Accessories:	Optional Additional Finisher Tray-C1
Super G3 Fax Board-T1 (Optional)	
Applicable Line:	Public Switched Telephone Network (PSTN), Facsimile Network
Connection Lines:	One
One-Touch Buttons	
2020/2016:	200 Destinations
2020i/2016i:	500 Destinations
Sending/Original Sizes:	Statement to 11" x 17"
Recording/Printing Sizes:	Statement to 11" x 17"

Additional Supplies and Accessories

- Additional Finisher Tray-C1
- Barcode Printing Kit-B1^{*}
- Basic Card Set
- Braille Label Kit-A1
- Cabinet-R1 (Large)
- Cabinet-S1 (Small)
- Card Reader Attachment-D1
- Card Reader-E1
- Copy Card Sets
- Document Tray-J1
- GPR-18 Black Toner
- Stamp Ink Cartridge-B1
- Staple Cartridge-J1
- Options for imageRUNNER 2020/2016 only
- Duplex Unit-A1
- Fax Panel-A1
- PCL Printer Kit-J1
- Platen Cover

^{*} Standard configuration of the imageRUNNER 2020/2020i shown; the imageRUNNER 2016i/2016 devices ship standard with one paper cassette.

^{**} Standard on imageRUNNER 2020i/2016i; optional on imageRUNNER 2020/2016.

^{***} Option for imageRUNNER 2020/2016 only.

[†] Option for imageRUNNER 2016i/2016 only.

^{††} At room temperature of 20°C/68°F.

^{*} For UFR II LT only. Requires 256MB RAM.

^{**} For UFR II LT only.

^{***} Send Capability is only available on the imageRUNNER 2020i/2016i model.

[†] Check for availability.

image*ANYWARE*

1-800-OK-CANON
www.usa.canon.com

Canon U.S.A., Inc.
One Canon Plaza
Lake Success, NY 11042

As an ENERGY STAR® Partner, Canon U.S.A., Inc. has determined that these products meet the ENERGY STAR guidelines for energy efficiency. ENERGY STAR and the ENERGY STAR mark are registered U.S. marks. Novell and NetWare are registered trademarks of Novell, Inc. in the United States and other countries. Windows and Windows NT are registered trademarks of Microsoft Corporation in the United States and/or other countries. Apple and Macintosh are registered trademarks of Apple Computer, Inc. CANON and IMAGERUNNER are registered trademarks of Canon Inc. in the United States and may also be registered trademarks or trademark in other countries. IMAGEWARE is a registered trademark of Canon U.S.A., Inc. in the United States and is a trademark of Canon Inc. in certain other countries. IMAGEANYWARE is a trademark of Canon. All referenced product names and other marks are trademarks of their respective owners. Specifications subject to change without notice. Machines shown with optional accessories/equipment. Check with your local Authorized Canon Dealer for availability. ©2006 Canon U.S.A., Inc. All rights reserved.

0055W913
1106-2020/2016-50M-MSP

PRINTED ON RECYCLED PAPER IN THE U.S.A.

