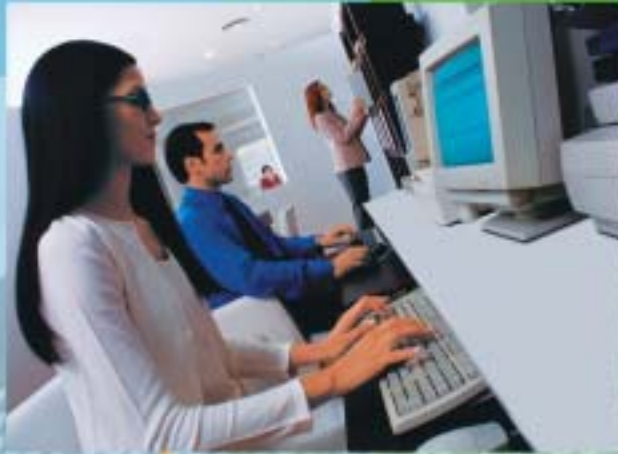


Canon

imageRUNNER®
2220 SERIES



DEPARTMENTAL
SYSTEMS



meap
POWERED BY

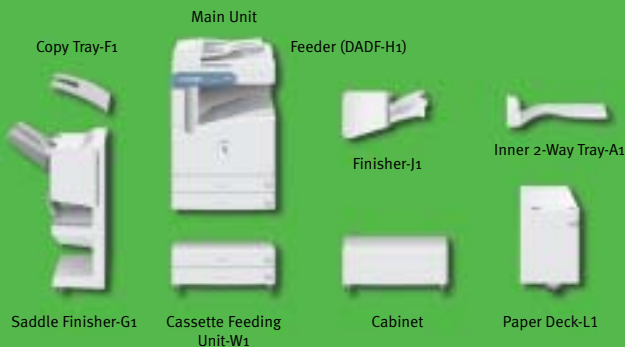
A NEW GENERATION OF INTEGRATED BUSINESS SYSTEMS

Canon's imageRUNNER 2220 Series is a highly advanced digital imaging solution designed to act as a dynamic central hub for total office automation and management of your most valuable resources—critical business information, ideas, and knowledge. Incorporating Canon's MEAP™ (Multifunctional Embedded Application Platform) architecture, the imageRUNNER 2220 Series offers a complete suite of functionality, and the unique ability to embed diverse and customizable applications that tightly integrate into every aspect of your business workflow.

The imageRUNNER 2220N and imageRUNNER 2220i each deliver output at speeds of up to 22 pages per minute. What's more, each supports advanced digital Copying and Mail Box features, network Printing and Scanning functions, Super G3 Fax capabilities, and the ability to send electronic information across a diverse digital landscape. No matter which model you choose, you will benefit from Canon's industry-renowned image quality for the most faithful reproduction of text and images.

imageRUNNER 2220 Series Specifications

Type:	Digital, Multifunction Imaging System	Drum:	Organic Photo Conductor (OPC)—Estimated Yield: 55,000 Impressions	Dimensions (H x W x D):	17" x 12-3/4" x 23-1/4" (432mm x 324mm x 591mm)
Imaging System:	Laser Dry Electrostatic Transfer	Max. Duty Cycle:	75,000 Impressions Per Month	Weight:	66.1 lb. (30kg)
Developing System:	Dry Monocomponent Toner Projection	Toner:	Estimated Yield: 15,000 Images (at 6% Coverage)	Inner 2-Way Tray-A1 with Copy Tray-F1 (Optional)	
Fixing System:	RAPID Fusing System™	Sending Functions (2220i)		Acceptable Paper Weights:	17 lb. to 20 lb. Bond
Image Server Memory:	Standard 256MB RAM/10GB HDD (Max. Capacity: Approx. 3,700 Originals)	Sending Methods:	E-mail, I-fax, Super G3 Fax (Optional), File Server (IPX, FTP, SMB)	Number of Trays:	Two Trays
First-copy Time:	5.8 Seconds from Platen Glass	Address Book Capacity:	Max. 1,800 destinations	Tray Capacity	
Warm-up Time:	6.6 Seconds from Feeder	File Format:	Max. 5 LDAP Servers	Top Tray:	100 Sheets (Letter)
	10 Seconds or Less from Sleep Mode	Sending Sizes:	Single-page TIFF, Single-page PDF, Multipage TIFF, Multipage PDF	Lower Tray:	250 Sheets (Letter)
	40 Seconds or Less from Main Power Off	Accessories		Acceptable Paper Sizes:	Statement to Ledger
Copy/Print Speed:	22 ppm (Letter)	Duplexing Automatic Document Feeder-H1 (Standard)		Power Source:	From Main Unit
Max. Original Size:	11" x 17" (Ledger)	Acceptable Originals:	Statement-R to Ledger	Inner 2-Way Tray	
Max. Copy Size:	11" x 17" (Ledger)	Capacity:	50 Sheets (20 lb. Bond/Letter)	Dimensions (H x W x D):	10" x 5-7/8" x 16-1/2" (254mm x 149mm x 420mm)
Min. Copy Size:	4" x 5-1/2"	Max. Paper Weight:	10 lb. to 32 lb. Bond (Letter, One-sided)	Weight:	7.7 lb. (3.5kg)
Max. Mail Boxes Supported:	100	Feeding Speed:	13 lb. to 32 lb. Bond (Letter, Two-sided)	Copy Tray-F1	
Max. Copy Reservation:	5 Jobs	Power Source:	22 Sheets/Minute (Letter)	Dimensions (H x W x D):	9" x 12-3/4" x 11-7/8" (227mm x 322mm x 300mm)
Actual Resolution:	600 dpi x 600 dpi	Cassette Feeding Unit-W1 (Optional)		Weight:	15.3 oz. (435g)
Interpolated Resolution:	1200 dpi x 600 dpi (Copy)	Paper Capacity:	Dual 500-sheet Paper Cassettes (1,000 Sheets/20 lb. Bond)	Finisher-J1 (Optional)	
	2400 dpi x 600 dpi (Print)	Acceptable Paper Sizes		Acceptable Paper Weights:	17 lb. to 32 lb. Bond
Exposure Control:	Automatic or Manual	Top Cassette:	Statement-R to Legal	Number of Trays:	One Tray
Halftone:	256 Gradations of Gray	Bottom Cassette:	Statement-R to Ledger	Tray Capacity	
Duplexing:	Standard Automatic Trayless Duplexing	Acceptable Paper Weights:	17 lb. to 20 lb. Bond	No Collating/Collate/	
		Power Source:	From Main Unit	Group Mode:	300 Sheets (Letter, Letter-R, Statement, Statement-R)
Magnification Reduction/		Dimensions (H x W x D):	9-3/4" x 22-1/4" x 26-3/4" (248mm x 565mm x 678mm)	Staple Mode:	200 Sheets (Legal)
Enlargement:	25% to 800% — Platen (in 1% increments)	Weight:	61.7 lb. (28kg)	Staple Position:	150 Sheets (Ledger)
	25% to 400% — Feeder (in 1% increments)	Envelope Feeder Attachment-B1 (Optional)		Max. Stapling Capacity:	30 Sets (Letter, Letter-R, Legal, Ledger)
Paper Supply		Copy Speed:	10 cpm	Power Source:	From Main Unit
Standard:	Dual 500-sheet Paper Cassettes (1,000 Sheets)	Acceptable Envelopes:	COM10, DL, Monarch, ISO-B5, ISO-C5, Yougata-4	Dimensions (H x W x D):	9-1/8" x 22-1/4" x 20" (232mm x 565mm x 509mm)
	Stack Bypass (50 Sheets)	Feeder Capacity:	Approx. 50 Envelopes or 1-1/4" (31.75mm)	Weight:	24.3 lb. (11kg)
Optional:	Dual 500-sheet Paper Cassettes (1,000 Sheets)	Dimensions (H x W x D):	2-1/2" x 7-7/8" x 11-3/8" (62mm x 199mm x 288mm)	Saddle Finisher-G1 (Optional)	
	Paper Deck (2,500 Sheets)	Weight:	1.85 lb. (840g)	Acceptable Paper Weight:	17 lb. to 20 lb. Bond
Multiple Copies:	1 to 999	Paper Deck-L1 (Optional)		Number of Trays:	Four Trays, including Saddle-stitch Tray and Inner 2-Way Tray
Paper Weights:	17 lb. to 20 lb. Bond (Cassette)	Paper Deck Capacity:	2,500 Sheets (20 lb. Bond)	Tray Capacity	
	17 lb. to 32 lb. Bond (Stack Bypass)	Paper Size:	Letter	Top Tray:	1,000 Sheets (Letter)
Communication Interface		Acceptable Paper Weights:	17 lb. to 20 lb. Bond	Inner 2-Way Tray:	100 Sheets (Letter)
Topology:	Ethernet	Power Source:	From Main Unit	Saddle-stitch Tray:	250 Sheets (Letter)
Speed:	10/100 Mbps Ethernet			Staple Position:	100 Sheets (Letter)
Protocols Supported:	TCP/IP, IPX/SPX,™ EtherTalk,® SMB			Max. Stapling Capacity	50 Sheets (Letter, Letter-R)
Networked Interface					25 Sheets (Ledger)
Connections:	10/100Base-T (RJ-45)				2 to 10 Sheets Saddle-stitched
Dimensions (H x W x D):	35-7/8" x 22-1/4" x 29" (910.5mm x 565mm x 762mm)				
Installation Space (W x D):	32-3/4" x 29" (830mm x 762 mm)				
Weight:	214 lb. (97.4kg)				
Power Source:	120V AC, 60Hz, 10A				
Power Consumption:	1.35 kW (Max.)				



imageRUNNER 2220 Series Specifications (continued)

Saddle-stitch Tray

Paper Weight:	17 lb. Bond to 20 lb. Bond
Total Sides Imaged:	40 (10 Sheets)
Total Sets:	2 to 5 Sheets/20 Saddle-stitched Sets 6 to 10 Sheets/10 Saddle-stitched Sets
Folding:	V-folding Standard
Power Source:	From Main Unit
Dimensions (H x W x D):	33-5/8" x 21" x 23-3/4" (855mm x 532mm x 603mm)
Weight:	77.2 lb. (35kg)
Attachable Accessories:	Puncher Unit-K1

Puncher Unit-K1 (Option for Saddle Finisher-G1)

Max. Paper Weight:	17 lb. to 20 lb. Bond
Punch Method:	Sequential Processing System
Punch Types:	2-hole/3-hole (Auto Change)
Paper Sizes:	2-hole (Letter-R, Legal) 3-hole (Letter, Ledger)
Punch Dust Stock:	Approx. 3,000 Sheets
Power Source:	From Main Unit
Dimensions (H x W x D):	6-3/4" x 3-1/2" x 22-1/8" (170mm x 90mm x 560mm)
Weight:	5.3 lb. (2.4kg)

Super G3 Fax Board-J1 (Optional)

Applicable Line:	Public Switched Telephone Network (PSTN)
Connection Lines:	One (J1)
Sending/Original Sizes:	Statement to Ledger (From Document Feeder)
Recording/Printing Sizes:	Statement to Ledger
Transmission Times:*	
ECM-MMR:	Approx. 2.8 Seconds
G3-MR:	Approx. 11 Seconds
G3-MH:	Approx. 13 Seconds
JBIG:	Approx. 3.2 Seconds
Scan Line Density	
Standard:	8 pels/mm x 3.85 lines/mm
Fine:	8 pels/mm x 7.7 lines/mm
Super Fine:	8 pels/mm x 15.4 lines/mm
Ultra Fine:	16 pels/mm x 15.4 lines/mm
Auto Dial Function:	Address Book: 1,800 Destinations
Image Memory:	Approx. 3,700 pages

Network Multi-PDL Printer Kit-C1 (Standard)

Type:	Embedded Print/Network
Processor:	Canon Custom Processor 250 MHz—Shared
RAM:	256MB (Std./Max.)—Shared
Hard Disk:	10GB—Shared
PDL Support:	PCL 5e, PCL 6, PostScript 3 Emulation
Internal Fonts:	136 PostScript Fonts, 117 Adobe® Type Fonts, 19 TrueType® Fonts, 80 PCL Roman Fonts, 32 PCL Bar-code Fonts
Interface Connections:	RJ-45 (10/100Base-T) IEEE 1284 (Compatibility: Nibble, Byte and ECP mode), Token Ring* (Optional Card)
Protocol Stacks:	IPX/SPX: 802.2, 802.3, Ethernet II, 802.2 SNAP TCP/IP: Ethernet II AppleTalk:® Phase II
Network OS:	Novell® NetWare® v. 3.2, 4.1, 4.11, 4.2, 5, 6 (IPX/SPX), Windows® 95/98 (TCP/IP), Windows NT® 4.0 (TCP/IP), Windows 2000 (TCP/IP), Windows XP, Solaris™ 1.x, 2.5 or later (TCP/IP), Apple® System 7.5 or higher (DDP)

Other Optional Accessories and Utilities

- FL Cassette-V1(S)
- FL Cassette-U1(L)
- Document Tray-D2
- Card Reader-C1
- Card Sets
- Cabinet
- Copy Control Interface Cable
- Braille Label Kit-A1
- Accessibility Handle-A1
- Token Ring-A1 (Set)
- MEAP I/F Board-B1
- Security Kit-A1P
- Resolution Switching Board
- imageWARE™ Suite
- NetSpot® Suite
- eCopy Suite

Supplies

- GPR-6 Black Toner
- GPR-6 Drum Unit
- Stamp Ink Cartridge-B1
- Staple-L1 (Finisher-J1)
- Staple-J1 (Saddle Finisher-G1)
- Transparency Type-E (100 Sheets/Box)
- Matte Labels, 30-up (100 Sheets/Box)

*Approximate 3-second-per-page fax transmission time based on ITU-T No. 1 Chart (MMR, Standard Mode) at 33.6 Kbps modem speed when transmitting to another V.34 machine. The Public Switched Telephone Network (PSTN) currently supports 28.8 Kbps modem speeds or lower, depending on telephone line conditions.

As an ENERGY STAR® Partner, Canon U.S.A., Inc. has determined that these products meet the ENERGY STAR® guidelines for energy efficiency. ENERGY STAR and the ENERGY STAR certification mark are registered U.S. marks. Windows and Windows NT are registered trademarks of Microsoft Corporation in the United States and/or other countries. Adobe and PostScript are registered trademarks of Adobe Systems Incorporated in the United States and/or other countries. Apple, AppleTalk, and TrueType are registered trademarks of Apple Computer, Inc. Novell and NetWare are registered trademarks of Novell, Inc. in the United States and other countries. IPX/SPX is a trademark of Novell, Inc. Solaris is a trademark of Sun Microsystems, Inc. in the United States and other countries. Canon, NetSpot, and Canon Know How are registered trademarks, and MEAP and the GENUINE logo are trademarks of Canon, Inc. IMAGERUNNER is a registered trademark of Canon Inc. in the U.S. and Canada. IMAGEWARE is a trademark, and IMAGEANYWARE is a service mark of Canon U.S.A., Inc. All other terms and product names may be trademarks or registered trademarks of their respective owners, and are hereby acknowledged.


Specifications subject to change without notice.

Canon KNOW HOW®

1-800-OK-CANON
www.usa.canon.com

Canon U.S.A., Inc.
One Canon Plaza
Lake Success, NY 11042

0903-iR2220-PDF

 PRINTED ON RECYCLED
PAPER IN THE U.S.A.

