

Canon



PRODUCTION SOLUTIONS

imageRUNNER®
7105 / 7095

imageRUNNER®
7095 Printer

imageRUNNER®
7086



Document Handling Accessories

As your documents and applications become more complex, Canon production imageRUNNER® devices can grow with you to deliver professional document finishing solutions in-house.

CANON PRODUCTION-CLASS FINISHING ACCESSORIES— BOUND TO INCREASE YOUR PRODUCTIVITY



Document production is not complete until the output is *finished*, meaning that completely collated sets are bound and ready for immediate distribution.

Canon invites you to learn more about how the imageRUNNER 7105/7095/7095 Printer/7086 devices, when properly equipped with advanced finishing accessories, can meet your needs for professional document publishing. The capabilities of these production-class imageRUNNER accessories now provide—in-house—what was previously available to you only through outsourcing. Speak to your authorized Canon sales representative to find out how you can enhance the productivity and competitiveness of your business with imageRUNNER finishing solutions.

CHALLENGE YOUR SYSTEM VERSATILITY EXPECTATIONS

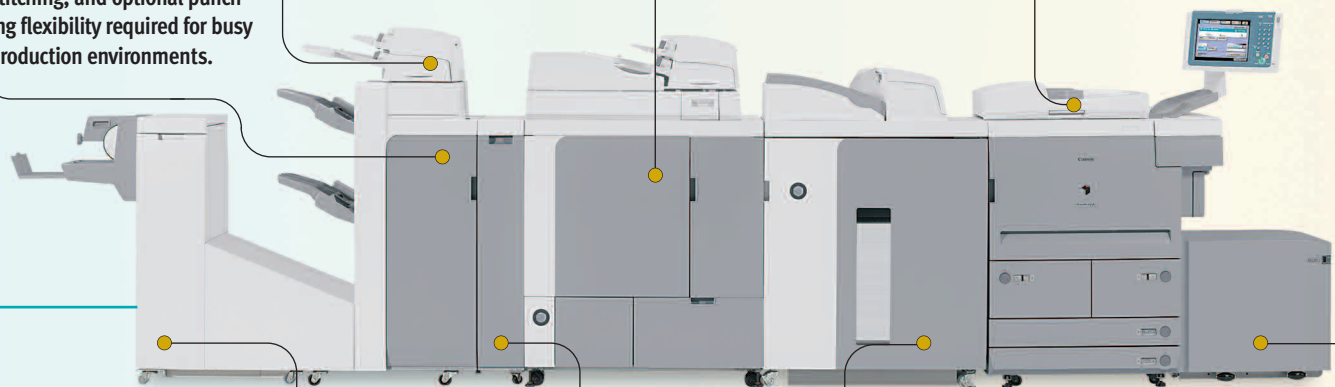
The imageRUNNER 7105, imageRUNNER 7095, imageRUNNER 7095 Printer, and imageRUNNER 7086 devices are modular, allowing you to mix and match the paper supply and advanced finishing accessories you need to meet your diverse publishing requirements and drive productivity to new levels.

The Finisher-V1 or Saddle Finisher-V2 provides the collating, stapling, saddle-stitching, and optional punching flexibility required for busy production environments.

Install the Document Insertion Unit-C1 on top of the Finisher Units to feed booklet covers into job streams.

Add the Perfect Binder-A1* to produce perfectly bound and trimmed books with wraparound covers.

The standard Duplexing Automatic Document Feeder makes quick work of complex originals.



The Professional Puncher-A1* offers a number of optional hole-punch tools to ready documents for advanced binding applications.

Attach the Booklet Trimmer-C1 to the Saddle Finisher-V2 to trim the open end of booklets.

The Paper Folding Unit-D1 Z-folds 11" x 17" pages into document sets with a finished 8-1/2" x 11" size.

The High-Capacity Stacker-A1[§] neatly stacks sheets for long periods of unattended operation. Includes a removable dolly.

Add the Paper Deck-W1 or Paper Deck-X1 to raise system paper capacity to a maximum of 7,650 sheets.

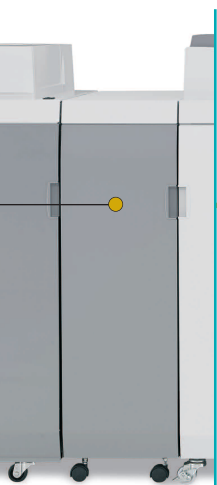
OTHER DOCUMENT HANDLING ACCESSORIES

- Cassette-AB1
- Stacker Dolly-A1
- Tab Feeding Attachment-A1
- Punch Tools
- Document Tray-L1
- Finisher Option Power Supply Unit-R1
- Puncher Unit-V1*

* The Professional Puncher-A1 cannot be installed simultaneously with the Perfect Binder-A1. The Professional Puncher-A1 and the Puncher Unit-V1 can be installed simultaneously.

§ Check with your local Authorized Canon Dealer for availability. Note: Some accessories require additional equipment or may be prerequisites for other options. Check with your local Authorized Canon Dealer for details.

The imageRUNNER 7095 shown with optional accessories.





Create professional hole-punched output

PAPER DECK-W1 AND PAPER DECK-X1

Raise system paper capacity to a maximum of 7,650 sheets for uninterrupted operation. Choose the optional **Paper Deck-W1** to add 3,500 sheets of letter-sized paper, or the versatile **Paper Deck-X1** to add 3,500 sheets of letter, legal, or 11" x 17" stocks to meet any high-volume job. Both options support media weights between 17 lb. Bond to 110 lb. Index.



Paper Deck-X1



Paper Deck-W1



Up to six paper sources can be used

PROFESSIONAL PUNCHER-A1

Excellent for print-for-pay and in-plant environments that require maximum hole-punching versatility, the **Professional Puncher-A1** supports a variety of advanced in-line punching selections. Simply insert one of the available punch tools to enable in-line hole-punching for 8-1/2" x 11" pages, up to 80 lb. Cover. The precise alignment of holes on every page delivers punched manuals and workbooks with flush pages that are easy to turn. Produce sets ready for off-line Plastic Comb, Twin Loop, Color Coil, Velo, Loose-Leaf, or Proclick Binding and quickly switch patterns to meet the ever-changing needs of your production environment. The ProClick® Pronto™ along with the Professional Puncher-A1 forms a total finishing solution and seamless workflow for printing, collating, punching, and binding.



Easily replace punch tools as needed



ProClick® Pronto™



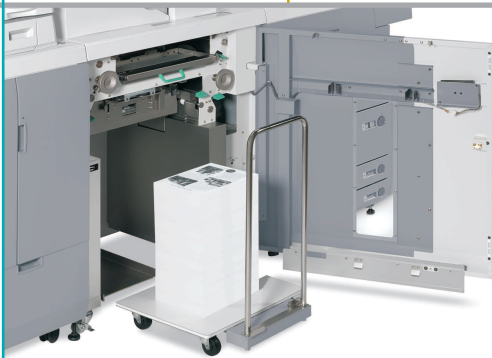
Professional Puncher-A1

HIGH-CAPACITY STACKER-A1

Stack up to 5,000 sheets in the optional **High-Capacity Stacker-A1** for long periods of unattended operation. Precision alignment and offset stacking capabilities ready document sets for off-line finishing. The removable rolling dolly makes it effortless to transport large quantities to packing and shipping desks or to other off-line finishing devices. A convenient top exit tray offers a 1,000-sheet capacity for non-collated output. Additional dollies are available to support non-stop document production.



High-Capacity Stacker-A1



Removable Dolly

PERFECT BINDER-A1

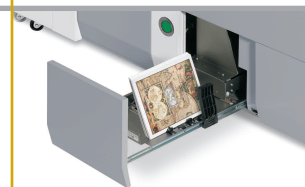
Produce perfectly bound and trimmed books with wraparound covers in-line, without manual intervention. The optional **Perfect Binder-A1** with Document Insertion Unit uses hot glue technology to attach heavyweight covers to 10- to 200-sheet books. Automatic three-way trimming delivers a professional product that rivals offset printing and off-line production equipment. Pull media from the 50-sheet Bypass, the 550-sheet Paper Cassettes, the optional 3,500-sheet Paper Deck-X1, or insert pre-printed covers through the *post-process* Document Insertion Unit. Dual 200-sheet trays sit atop the Perfect Binder-A1 to feed book covers into job streams. By inserting pre-printed covers *post-process*, they're not exposed to the heat of the fusing unit, thereby preserving image quality.



Perfect Binder-A1



Document Insertion Unit



Delivery of perfect-bound output



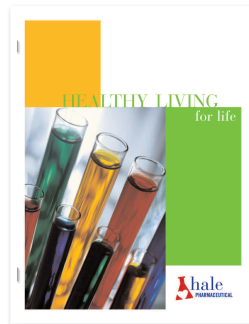
Perfect-bound book output

FINISHER-V1/SADDLE FINISHER-V2 WITH OPTIONAL PUNCHING, FOLDING, AND TRIMMING

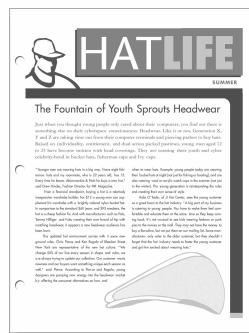
Corner or double staple sets of up to 100 letter-sized pages (50-sheet stapling for letter-R, legal, and ledger sets) and stack up to 5,000 sheets with the optional **Finisher-V1** or **Saddle Finisher-V2**.

Both Finishers provide an upper 3,000-sheet offset tray and a lower 2,000-sheet offset tray for non-stop collating with cascade loading and may be equipped with precision two- and three-hole punching through the internal **Puncher Unit-V1** option (not shown). The optional **Document Insertion Unit-C1** can be installed on top of either Finisher to enable the feeding of heavyweight or pre-printed covers. Like the Document Insertion Unit found on the Perfect Binder-A1, it offers dual 200-sheet trays to collate covers into job streams *after* fusing to preserve the image quality of pre-printed pages. And, either Finisher may be configured with the optional **Paper Folding Unit-D1** to Z-fold 11" x 17" pull-out pages, such as financial spreadsheets or large graphic illustrations, into document sets with a finished 8-1/2" x 11" size.

The **Saddle Finisher-V2** matches all the specifications of the Finisher-V1 and adds booklet-making capabilities (up to 80 imaged pages). For even greater productivity, add the **Booklet Trimmer-C1**. This option attaches to the Saddle Finisher-V2 to trim the open end of booklet sets for a flush, professional edge. After trimming, the booklets are delivered to an output tray via a conveyor belt for easy retrieval.



100-sheet stapling



Two- or three-hole punching



Finisher-V1

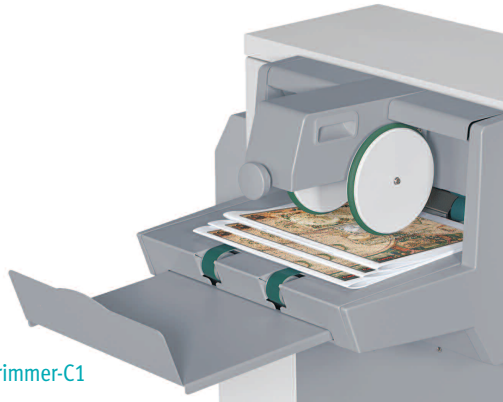


Saddle Finisher-V2

Document Insertion Unit-C1



Booklet Trimmer-C1



Paper Folding Unit-D1



PRODUCE PROFESSIONALLY FINISHED DOCUMENTS





Device Dimensions and Power Requirements Chart

Product/Accessory Name	Dimensions (H x W x D)	Weight	Power
Main Unit	58" x 47-7/8" x 30-7/8" (1474mm x 1216mm x 783mm)	7105/7095: 617 lb. (280kg) 7086: 595 lb. (270kg) 7095 Printer: 551 lb. (250kg)	208V, 60Hz, 12A
Paper Deck-W1	22-1/2" x 12-3/4" x 23" (570mm x 323mm x 583mm)	90.4 lb. (41kg)	Directly From Main Unit
Paper Deck-X1	22-5/8" x 23-3/8" x 24-1/2" (574.5mm x 593mm x 621mm)	101 lb. (46kg)	
High-Capacity Stacker-A1	48-9/10" x 33-9/10" x 30-1/5" (1240mm x 860mm x 765mm)	440 lb. (200kg)	120V, 10A
Perfect Binder-A1	53-1/2" x 36-1/4" x 31-1/8" (1360mm x 920mm x 791mm)	696 lb. (316kg)	208V, 15A
Finisher-V1	46-1/2" x 31-1/2" x 31-1/4" (1180mm x 800mm x 792mm)	278 lb. (126kg)	Directly From Main Unit* or 208V, 60Hz, 12A**
Saddle Finisher-V2	46-1/2" x 31-1/2" x 31-1/4" (1180mm x 800mm x 792mm)	392 lb. (178kg)	
Document Insertion Unit-C1	8-3/8" x 24-5/8" x 26-1/4" (213mm x 625mm x 667mm)	37.5 lb. (17kg)	From Finisher-V1 or Saddle Finisher-V2
Paper Folding Unit-D1	41" x 7-1/8" x 31" (1040mm x 179mm x 786mm)	97 lb. (44kg)	
Booklet Trimmer-C1	41" x 62-1/10" x 30-2/5" (1040mm x 1575mm x 770mm)	335 lb. (152kg)	
Professional Puncher-A1	38-1/2" x 12" x 28-1/2" (978mm x 305mm x 723mm)	170 lb. (77kg)	

Note: Specifications subject to change.

* When Finisher is equipped with Paper Folding Unit-D1 and/or Document Insertion Unit-C1.

** When Finisher is equipped with Professional Puncher-A1, Booklet Trimmer-C1, High-Capacity Stacker-A1, and/or Perfect Binder-A1.



1-800-OK-CANON
www.usa.canon.com

Canon U.S.A., Inc.
One Canon Plaza
Lake Success, NY 11042

As an ENERGY STAR® Partner, Canon U.S.A., Inc. has determined that the imageRUNNER 7105/7095/7086 devices meet the ENERGY STAR guidelines for energy efficiency. ENERGY STAR and the ENERGY STAR mark are registered U.S. marks. Pronto is a trademark and ProClick is a registered trademark of General Binding Corporation. CANON and IMAGERUNNER are registered trademarks of Canon Inc. in the United States and may also be registered trademarks or trademarks in other countries. IMAGEANYWARE is a trademark of Canon. Specifications and availability subject to change without notice. ©2009 Canon U.S.A., Inc. All rights reserved.

0113W535
0609R-ACCESS-PDF-IH

