



# Canon imageRUNNER 3570

## BUYERS LABORATORY INC. Lab Test Report

A Comprehensive BLI Laboratory Evaluation

### Canon imageRUNNER 3570\*

35 PPM Copier ■ Printer ■ Scanner ■ Fax



Test duration: Two months, including a 170,000-impression durability test.



Reliability .....	Very Good
Multitasking .....	Good
Administrative Utilities .....	Very Good
Feedback to Workstations .....	Fair
Ease of Network Setup .....	Good
Print Drivers .....	Very Good
Applications Compatibility .....	Excellent
Scan Functions .....	Excellent
Image Quality .....	Very Good
Productivity .....	Good
Ease of Use .....	Excellent
Feature Set .....	Very Good
Security Features .....	Excellent
Toner Yield .....	Poor
Cost per Page .....	Very Good
Value .....	Very Good

Maximum monthly duty cycle: 130,000 impressions.  
 BLI's recommended monthly duty cycle for peak usage: 75,000 impressions

### BLI RECOMMENDATION

#### ALSO INSIDE

- ▶ Test Procedures
- ▶ Specifications
- ▶ Certificate of Reliability

Ratings scale:  
 Excellent, Very Good, Good, Fair and Poor.

Based on an engine that proved to be highly reliable in BLI's rigorous two-month lab test, the Canon imageRUNNER 3570, configured with the Multi-PDL Print Kit-E1, is an outstanding performer that also offers very good output quality and excellent ease of use. It also gives users the ability to choose between two excellent scan solutions—Canon's Universal Send and eCopy's ShareScan OP. The unit features Canon's MEAP architecture, which enables it to run embedded applications that add functionality (including eCopy ShareScan OP for MEAP), customize the control panel to streamline workflow and integrate with a range of document management applications. This unit, which offers the lowest supplies cost per page of tested competitive models, is highly recommended for monthly volumes of up to 75,000 impressions.

\* Reliability, image quality and toner yield results are based on the performance of the Canon imageRUNNER 4570, which uses the same engine.

LAB TEST



## PERFORMANCE OVERVIEW

*+ , – and ○ represent positive, negative and neutral attributes, respectively.*

## RELIABILITY

**VERY GOOD**

- + The Canon imageRUNNER 3570 is based on a highly reliable engine that completed its 170,000-impression durability test with just one service call, which was simply for preventive maintenance, and four misfeeds, for a mis-feed rate of one per 42,500 impressions.
- The life of the unit's drum, at 85,000 impressions, is lower than average, potentially resulting in the need for more frequent service intervention than competitive models.

## MULTITASKING

**GOOD**

- + The unit offers good multitasking capabilities overall, with no hesitation or delays between jobs or while programming jobs.
- Up to four copy jobs can be programmed ahead and initiated while another copy job is in progress (five while a print job is in progress). A sixth job can be programmed ahead, but will not be scanned into memory until a reserve job slot becomes available. Some models in this speed range enable users to program a greater number of copy jobs while another is in progress.
- + The number of print jobs that can reside at the device is limited only by resources.
- + Up to five copy jobs can always reside at the device, regardless of the number of print jobs that are in queue.
- To reserve a copy job while copy jobs are running or reserved, the user must select "Done" from the dialog box that pops up on the screen showing selected features after a job is programmed. This closes the dialog box and allows the user to program another job. With some systems, the user can reserve a copy job without having to press a key.
- + A priority level of 1, 2 or 3, with 1 being the highest priority, can be assigned to various functions. If the priority level for the copy function is set to 1, and print is set to 2 or 3, all remaining print jobs (except the current one, which runs to completion) are moved down in the queue to give priority to any waiting copy jobs. If functions are assigned equal priority, jobs are processed in the order in which they are received.

- + Although not required to program a copy job during a print job, the Interrupt function performed very well. An interrupting copy job can use all typical features (e.g., RADF, duplexing, finishing) and can begin scanning even before the current job stops. After completion of the interrupting job, the unit automatically restarts the job that was interrupted.
- The network TWAIN scan function requires a walk-up user to place the scanner in an online mode, during which Internet fax and copy functions cannot be used. Full capability is restored when the unit is returned to offline mode, which can be done manually at the control panel or the unit can be set up to automatically revert to offline mode after two minutes. This is not an issue with the Universal Send functionality.
- Programming of the next copy job can begin as soon as all the pages of the current copy or scan job have been scanned.

## ADMINISTRATIVE UTILITIES

VERY GOOD

- Administrative utilities for the imageRUNNER 3570 include the unit's Remote User Interface (its embedded Web page) and imageWARE Enterprise Management Console. imageWARE Enterprise Management Console is HTML-based and in addition to enabling discovery of Canon as well as non-Canon devices on the network, enables viewing all devices or groups of devices that meet specified criteria. Administrators can choose to view network devices in a list view or in a map view that shows their location in an enterprise.

**Printer Status:** Maintenance errors have occurred.

**Scanner Status:** Ready to scan.

**Paper Information**

Drawer	Paper Type
Drawer 1	LTR Plain
Drawer 2	LTR Plain
Drawer 3	LGL Plain
Drawer 4	LGL Plain
Paper Deck	LTR Plain
Stack Bypass	LTR Plain

**Consumables**

Remaining Toner	Some
Remaining Staples	High
Punch Waste	Low

**Available Memory:** 99%

Remote User Interface



- + License Management System eliminates the need for installation of a module or additional software to add capabilities such as Universal Send functionality to the system. Instead, these capabilities are built into the imagePlatform architecture and can be activated simply by entering a code at the control panel.
- + The Remote User Interface is very easy to navigate and offers a broad range of functionality. It allows remote configuration of network settings, setup of LDAP and authentication, viewing of counters for every function (copy, print, send, receive) and remote programming and management of addresses for scan, e-mail, fax and Internet fax destinations, as well as management of mailboxes.
- The Remote User Interface also provides device status information such as the approximate amount of available paper, although information on remaining toner is vague (i.e., “some”).
- + The Web utility provides extensive information on jobs via the job management tab. Information includes user name, status of the job and number of pages. There are separate logs for print jobs, copy jobs, send jobs and received faxes.
- + The Remote User Interface allows direct printing of PDF files.
- + Plug-ins for HP Web Jetadmin are made available for Canon products, so users of this popular management utility will be able to use it to manage Canon devices, as well.

## EASE OF NETWORK SETUP

GOOD

- + Configuration of network settings can be easily performed both from the control panel and remotely via the Remote User Interface.
- The print drivers do not auto-launch upon insertion of the CD into the drive. In addition, each of the unit’s drivers requires a separate installation.
- + An installation utility built into the drivers CD automatically locates the machine and creates the port. For administrators who prefer to create the port manually, Canon provides a utility that walks the user through the process.
- + The drivers automatically detect configured accessories, eliminating the need for an administrator to manually specify configured accessories.
- + Greatly enhancing setup is the organization of PPDs into separate folders on the CD, making it very easy for an administrator to find the correct PPD. In



contrast, searching for PPDs with other systems requires browsing through many files (for different models, applications, languages and operating systems).

- + Facilitating the setup of multiple devices in a large installation is the Device Information Delivery Function, which enables an administrator to remotely copy all the settings of the imageRUNNER 3570 (such as default settings, fax and e-mail destinations, etc.) to as many as 100 supporting imageRUNNER devices on the network. An administrator can also assign ascending IP addresses to multiple devices all at once by entering a beginning range and an ending range.
- + Also aiding in the management of large installations is the optional Print Server Appliance, which enables users to download preconfigured drivers from the Web page of the Print Server Appliance, eliminating the need for an administrator to load drivers onto each workstation one at a time.

## FEEDBACK TO WORKSTATIONS

FAIR

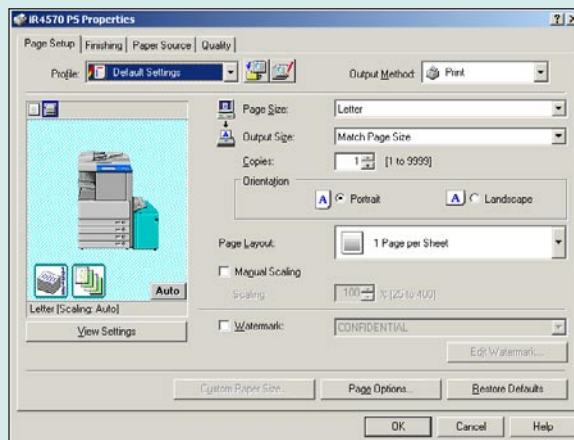
- There are no pop-up error messages or icon alerts to notify end users of warning conditions. Users must proactively check the Web page to check on device or print job status.
- The Print Monitor utility, which requires the administrator to create a port using Canon LPR 2.0 (which is a bit awkward since a standard TCP/IP port is already created during installation of the imageRUNNER 3570) provides pop-up job status messages indicating a job has been sent. Since the messaging is limited, BLI recommends using the automated installation routine.
- + imageWARE Enterprise Management Console can be configured to send pop-up error messages to one or more administrators.
- Information regarding the amount of remaining paper and the size of paper is displayed in the driver when clicking on a paper source, provided Canon's automated installation is used; however, obtaining accurate information requires the user to first select to update status information, which requires numerous steps (12 clicks of the mouse). And since users may not realize the paper size or capacity information they see on the image of the device in the driver may not be accurate, it could result in wasted paper and productivity.
- E-mail notifications of completed copy and scan jobs can be set up, but BLI test technicians observed that users were not notified that a scan job was not sent after attempting to send an e-mail to an incorrect address.
- + E-mail notifications of errors can also be sent to designated operators.

- + The Remote User Interface enables users to check device status, such as the approximate amount of remaining paper, as well as toner, staples and punch waste gauges.
- + Extensive information on the status of all types of jobs—print, fax, scan and copy—is available via the Remote User Interface.

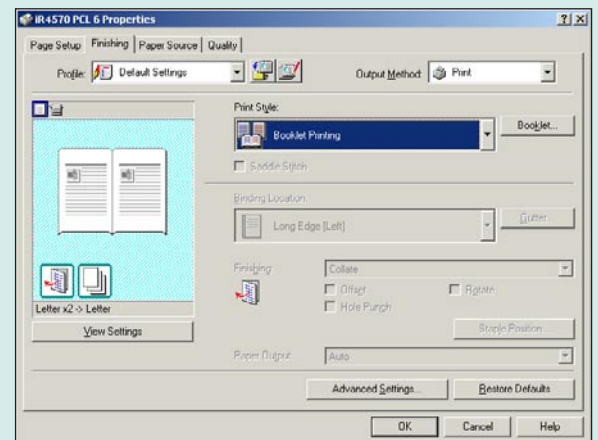
**PRINT DRIVERS**

**VERY GOOD**

- + Configured as tested with the optional Multi-PDL Printer Kit-E1, which includes the network interface, the Canon imageRUNNER 3570 offers PCL 5e, PCL 6, PostScript 3 (emulation) and Canon’s UFR (Ultra Fast Rendering) II print drivers. When the UFR II driver is used, the processing load is shared between the imageRUNNER 3570 and the user’s PC. All of the drivers share a similar layout and appearance, making use easier when switching between drivers.
- + The drivers are graphical and easy to use, and enable point-and-click selection of the desired paper source.
- Some commonly used features cannot be programmed from the main screen. Duplexing and finishing, for example, are located under the finishing tab.
- + The drivers offer a good feature set that includes secure print; proof print; promote print, which enables users to move their job ahead of others in the queue; the ability to save settings of frequently used jobs as profiles that can be applied to other print jobs in a single step; the ability to view selected settings; and the ability to select from up to three paper sources for a single job.

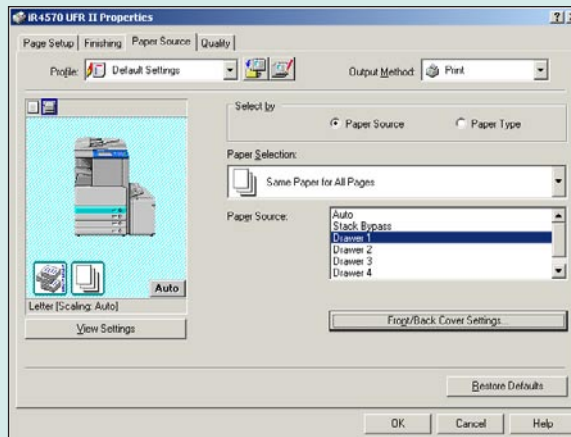


**Canon imageRUNNER 3570 PostScript Page Setup**



**Canon imageRUNNER 3570 PCL 6 Finishing Tab**

LAB TEST



**Canon imageRUNNER 3570 UFR II Paper Source Tab**

- + Selecting Edit and Preview before printing a document automatically opens the Canon PageComposer utility to allow viewing the pages of the document as thumbnail images, deleting pages, changing the order of files, changing print settings, and combining two or more documents created in different applications into one file.
- The UFR II driver also has a selection for insertion of banner pages between print jobs.
- + Another noteworthy feature is the ability to build complex jobs consisting of mixed paper sizes and orientations.
- Although an approximate amount of remaining paper is displayed when the user clicks on a particular paper drawer on a graphical depiction of the product in the driver, the information is not accurate unless the user first updates the information. Updating the information is not practical since it cannot be done within the application and is a procedure that requires 12 clicks of the mouse.
- + The unit supports simultaneous RIP and print, which means that printing can begin while the document is still being processed and another can be processed while a job is printing.
- + When printing multiple collated sets, Collate can be selected from either the print screen within the application or from the properties screen of the driver without increasing the size of the file.
- When a print job requiring a paper size that is not currently available on the device is sent to the device, other copy and print jobs sent to the device are held up until a user rectifies the situation.



## APPLICATIONS COMPATIBILITY

**EXCELLENT**

+ No problems were experienced with any of the applications used in the applications compatibility tests. Units are tested for compatibility on Windows 2000 platforms with Microsoft Word 2000, Microsoft PowerPoint 2000, Microsoft Excel 2000, Adobe PageMaker 7.0, Adobe Photoshop 6.0 and Adobe Acrobat 6.0 using 25 application test files, which contain text, graphics, halftone images, tables, etc., enabling BLI technicians to evaluate memory usage, file processing, font rendering and grayscale capability.

## SCAN FUNCTIONS

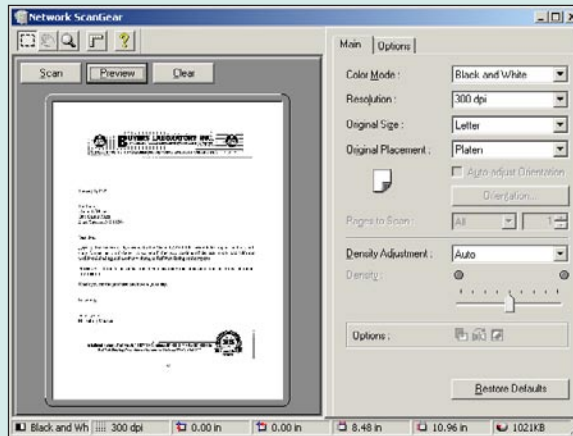
**EXCELLENT**

- + BLI tested the imageRUNNER 3570 with optional Universal Send, which offers very easy-to-use and feature-rich scan functionality. It supports network authentication (whereby users can be required to enter their network user name and password to access the unit's functions) and LDAP, which means that users can search for e-mail addresses residing on network mail servers (up to five LDAP directories can be searched) from the control panel of the imageRUNNER. LDAP searches are not possible from the Web utility. Destinations can also be easily programmed remotely from the Web utility or manually entered at the control panel's QWERTY keypad, in spite of the unit's relatively small keys.
- + Universal Send supports scanning to e-mail, Internet fax destinations, FTP sites and the desktops of users running eCopy Desktop (optional software that allows users to work with and OCR scanned documents). Further, users can send a document to multiple types of destinations in one session.
- + Unlike other scan solutions BLI has tested, Universal Send displays a preview of the scanned image that users can check before sending the file.
- + Another noteworthy feature of Universal Send is embedded URL Send, which automatically sends a link to a recipient, rather than an entire document (the link is created automatically when a user selects the function); the recipient can use the link to access the document stored on the hard drive of the imageRUNNER. By eliminating the need to have very large documents transmitted across the network, this feature reduces network traffic.
- + An optional PDF Enhancement Kit for Universal Send provides two noteworthy capabilities. It enables saving of scanned documents so that they are OCR-searchable PDF files and allows users to set a password to be able to open, print or edit sent documents.
- + As the Canon imageRUNNER 3570 incorporates the company's MEAP technology (which enables it to run applications that add capabilities or customize



the control panel), this unit can be used with optional eCopy ShareScan OP for MEAP. BLI considers eCopy to be an outstanding scan solution that is very easy to use and enables users to scan directly into numerous document management and other enterprise applications.

- Unlike with most other devices, when setting up scanning, the default domain must be used and DNS has to be enabled in order for LDAP support to function.
- + BLI test technicians praised the ease of use of the Universal Send scan function.
- + TWAIN scanning is also possible via Network ScanGear, which is standard with the device. Setting up ScanGear was also easy, because the device is auto located.
- By default, the maximum size allowed for e-mail jobs is 3 MB (larger files will be split up and sent as multiple files), but this threshold can be adjusted from 1 MB to 99 MB.



Preview is available for scanning

IMAGE QUALITY

VERY GOOD

- + In print mode, output was rated Excellent for text and line art and Very Good for halftones and solids.
- + In copy mode, solids were rated Excellent and all other aspects of output quality were rated Very Good.



## PRODUCTIVITY

GOOD

- The imageRUNNER 3570's efficiency in the job stream test is competitive.
- Overall print efficiency when producing multiple sets is competitive for tested models in this speed range in both duplex and simplex modes.
- While first-copy time from the platen is slower than the average at 6.8 seconds, first-copy time from the document feeder is competitive at 8.9 seconds.
- In copy mode, overall efficiency is competitive in all three primary copy modes (1:1, 1:2 and 2:2).

## EASE OF USE

EXCELLENT

- + The imageRUNNER 3570 features the same highly intuitive 6-1/4" x 4-5/8" color LCD touch-screen control panel as other imageRUNNER devices, which is a favorite of BLI test technicians.
- + The default main screen lists selections for Copy, Send and Mailbox keys. Users can specify one of the other menus or a screen for an optional MEAP application to be the default screen for walk-up users.
- + Though not all of the features required for typical copy jobs can be programmed from the main screen, they are selectable from the main screen and, when selected, bring the user to another screen where the settings can be programmed.
- + The imageRUNNER 3570 offers outstanding guidance to users via context-sensitive instructions, which are automatically displayed to walk-up users step by step through the process of programming functions.
- + Enhancing ease of use from the control panel are a contrast adjustment dial for the display, a Help key that provides information on a range of topics, the ability to review the settings for a job, and a very detailed job queue with information on the current job (including the number of sets programmed and the number of sets produced) and pending copy and print jobs. Users can view separate queues for copy, fax, send (scan) and receive jobs. The print queue lists both print and copy jobs. While copy jobs can be deleted with the Stop hard key, print jobs can be deleted by highlighting the job, selecting Cancel and then confirming the desire to delete the job by responding to a prompt. Jobs can be moved up to the next position in the queue using the Print Next key.



Canon imageRUNNER 3570 Control Panel

- + Secure print jobs can be released either at the KJCL panel or remotely via the Web utility.
- Secure print jobs can be printed only one at a time, as opposed to some systems that allow batch printing of all secure jobs of a particular user.
- A secure print job can be deleted from the control panel without entering the password.
- + The Counter Check hard key on the control panel allows the user to easily access meter count information for total copies, prints and scans, as well as a meter for MEAP, without having to search through various screens on the display to find this information. However, the meter report cannot be printed from the control panel.
- + In addition to changing the default mode of the unit for walk-up users (i.e., copy, scan), users can customize the control panel by moving features to the main screen.
- + The unit also received good marks for ease of loading paper, which can be accomplished while the unit is running. Users simply press a button and the drawers open. There are no spring-loaded ramps to hold down and no corner separators to impede access, although loading paper into the bypass tray requires lifting up a lever.
- + Replacing the toner cartridge was a simple and clean procedure.
- Although the paper drawers have a sliding width guide, the length guide must be removed and reinserted into the correct position. Additionally, as



the drawers do not automatically detect paper size, the user must adjust a dial at the front of the paper drawer to register the new size. If users don't register the new size, the wrong size paper will be indicated at the control panel and misfeeding could occur. In addition, users must specify the size of paper loaded in the bypass tray at the control panel.

- + BLI test technicians praised the guidance provided by the graphical illustrations and messages that appear on the display to help the user clear misfeeds. The only criticisms cited were that the instructions did not explain how to move the unit's finisher toward the front of the unit for misfeed access and the finisher itself is not clearly labeled. In addition, the error indicator did not clear after misfeeds were removed.
- Note that if a user is not careful when closing the right side door, the upper portion of the door may not completely close, which could result in a misfeed.
- + Canon provides excellent and comprehensive documentation.

## FEATURE SET

VERY GOOD

- The imageRUNNER 3570 offers a competitive standard paper capacity of 1,100 sheets from two drawers (550 sheets each) that support up to 20-lb. bond, plus a bypass tray that accommodates up to 32-lb. stock. Note that the majority of models in this group have a higher sheet capacity and accommodate heavier weights through the bypass.
- + Paper capacity can be expanded to 4,750 sheets from six sources, which is higher than that of most competitive units.
- The optional reversing automatic document feeder has a capacity of 50 sheets, which is lower than average for competitive units.
- Other features include the ability to make up to 999 copies in a single run and 1,000 copy control codes.
- + The unit is available with a choice of finishers. BLI tested the internal 1,000-sheet finisher, which sits within the footprint of the unit and is noteworthy in that not only does it staple up to 50 sheets per set, but it also supports optional hole-punching and an optional second tray. Also offered are an external 50-sheet stapling finisher and a saddle finisher that V folds up to 15 sheets to make booklets of up to 60 pages.
- + In addition to offering watermark printing, this unit offers page numbering and date printing to meet the Bates stamping requirement of the legal market.



- + This unit also offers a choice of scan options (see “Scan Functions”).
- The unit offers 512 MB of RAM and a 20-GB hard disk drive (HDD) to store documents in mail boxes, with the number of documents that can be stored in a mail box limited only by memory. Further, the contents of the mail boxes can be backed up via the Remote User Interface onto another device or server, for example.
- + The imageRUNNER 3570 offers traditional fax capability with single- or dual-line fax options. Fax features include a 33.6-Kbps modem with JBIG compression, multi-access and 200 one-touch or speed-dial buttons. PC and network faxing are also available with the optional fax boards.
- + Canon’s MEAP (Multifunctional Embedded Application Platform) architecture enables the unit to run embedded applications that add functionality, customizes the control panel to streamline workflow and integrates with a range of document management applications.

## SECURITY FEATURES

EXCELENT

- + In addition to offering secure print and network user authentication, the imageRUNNER 3570 offers an optional security kit that encrypts data, automatically overwrites all information stored on the hard drive, and conceals the job log.
- + The PDF Encryption mode, which is included with the optional Universal Send PDF Enhancement Kit, enables users to encrypt a scanned document with either 40-bit or 128-bit encryption, set a password to open the document and set a separate password for recipients to edit, change or print the document.
- + Standard MAC address filtering allows administrators to limit which users can access the unit. In addition, imageWARE Enterprise Management Console allows an administrator to restrict access based on IP address, NetBios name or DNS name, gives administrators the ability to erase all documents stored on the hard drive and network user authentication (whereby users can access the device only after entering the same user name and password as is required to access their network-connected PC).

## ACCESSIBILITY FEATURES

NOT RATED

- + Several options contribute to Section 508 compliance. These include a Braille kit. They also include the Remote Operator’s Software Kit, which enables



users who are wheelchair bound, for example, to view the unit's control panel screens remotely from their desktops via emulation software that replicates the options available on the device's control panel. The optional Voice Guidance Kit allows users with visual impairments to receive audible confirmation of the settings they select for basic copy programming.

**TONER YIELD**

**POOR**

– Tested toner yield is lower than average for units in this range tested to date.

**VALUE**

**VERY GOOD**

+ The imageRUNNER 3570 is priced competitively with the average for comparably equipped models in its speed range and offers a cost per page for supplies that is lower than the average and, in fact, the lowest, for tested Segment 3 units.

LAB TEST



## SUPPORTING TEST DATA

### Test Environment

This product was tested in BLI's 10,000-square-foot test lab, in an environment monitored by a Honeywell Temp/RH chart recorder, which replicates typical office conditions.

### Test Equipment

BLI's dedicated test network, consisting of Windows NT 4.0, 2000 and Microsoft Exchange servers, Windows XP Professional and Windows 2000 Professional workstations, 10BaseT/100BaseTX network switches and CAT5 cabling.

### Test Duration

Products are tested for two months, five weeks of which consists of a durability test during which the product is run at its manufacturer-rated maximum monthly duty cycle, with 50 percent of the test volume comprised of copy jobs and 50 percent comprised of print jobs. BLI's daily test usage is designed to replicate real-world use over an eight-hour workday, and as such includes a mix of various-size documents, simplex and duplex modes, and a mix of short, moderate and long run lengths, and on/off cycles, throughout the day. The durability evaluation also includes testing of the document feeder/scanner for an additional 10 percent of the monthly maximum volume, evenly divided over the course of the test.

### Tested Configuration

Base unit, plus optional Multi-PDL Print Kit-E1, internal finisher, LCT, Universal Send and the PDF Enhancement Kit.

### Test Procedures

The test methods and procedures employed by BLI in its lab testing include BLI's proprietary procedures and industry-standard test procedures, including a BLI-developed variation of ASTM's 1318-90 Test Method for Determination of Productivity using Electrostatic Copy Machines. In addition to a number of proprietary test documents, BLI uses an industry-standard Katun test original for evaluating black image quality and test suites from Quality Logic to evaluate applications compatibility. In addition to a visual observation, color print quality is tested using the ANSI standard IT8 Color Test Target, which is read using the Minolta CM5031 Spectrophotometer, and samples are analyzed using the CIE XY Chromaticity Diagram. In addition, density of black and color output is measured using an X-Rite 428 Densitometer. Georgia-Pacific Spectrum DP 20-lb. bond is used in the tests, 10 percent of which is recycled paper containing 30 percent post-consumer content. Image quality is tested using Georgia-Pacific Printing Paper (95 brightness, 22-lb. bond).

Buyers Laboratory Inc. ■ 20 Railroad Avenue ■ Hackensack, NJ 07601 ■ USA ■ (201) 488-0404

Michael Danziger  
CEO

Lynn Nannariello  
Senior Editor

Carl Schell  
Associate Editor

Pete Emory  
Manager of Laboratory Testing

Mark Lerch  
COO

Marlene Orr  
Printer Industry Analyst

Ben Curry  
Research Editor

Pia Beddiges  
Manager of Field Testing

Anthony F. Polifrone  
Managing Director

Tracie Hines  
Associate Editor

Lisa Reider  
Research Editor

Ken Nardone  
Technical Manager, Field Testing

Daria M. Hoffman  
Managing Editor

George Mikolay  
Associate Editor

Marc Bussanich  
Technical Analyst

Anthony Marchesini  
IT Director

Laurie Ramirez  
Associate Editor

Camille Dendtler  
Research Manager

T. R. Patrick  
Art Director



RELIABILITY

PMs/Malfunctions	Service Required	Meter Count (Impressions)	Impressions Between Service
Meter count (beginning of test)		0	
Image Quality	Performed routine maintenance	160,000	
End of test period		170,000	
Total Misfeeds/Misfeed Rate	4/1 per 42,500 impressions		
Service Calls	0		
PMs	1		
Total Service Calls (including PMs)	1		

MULTITASKING

MULTITASKING EVALUATION

Primary Function	Secondary Function	PRINT	SCAN	COPY
PRINT		Yes	Yes	Yes
SCAN		Yes	Yes	Yes
COPY		Yes	Yes	Yes

NOTE: A "Yes" indicates that the user can initiate the secondary function while the primary function is taking place and that no further user intervention will be required for the secondary function to take place.

In addition to a single-user multitasking test, which evaluates a unit's ability to initiate or perform one function while another function is already in progress (see chart above), BLI also tests a multifunctional product's ability to handle multiple jobs that would be likely to stack up in a multi-user networked environment.

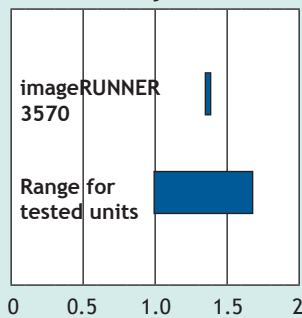
LABTEST



**IMAGE QUALITY**

Print Quality	
Text	Very Good
Line Art	Very Good
Halftone Pattern	Good
Halftone Range	Very Good
Solids	Very Good

*Print density*



*Print density:*

1.34 to 1.39

*Density for units in this class tested to date:*

0.98 to 1.69

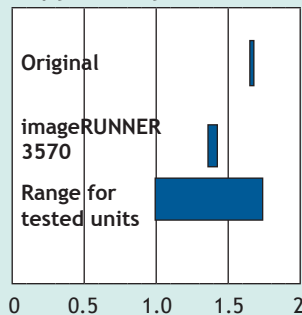
*Halftone range:*

Halftone output was visible from the 2% dot-fill level to the 95% dot-fill levels, although coverage within levels was grainy.

*Measurements are based on four readings corresponding to four different solid black locations on the output. The higher the density reading, the darker the image.*

Copy Quality	
Text	Very Good
Line Art	Very Good
Halftone Pattern	Very Good
Halftone Range	Very Good
Solids	Very Good

*Copy density*



*Density of original:*

1.65 to 1.69

*Density of copy:*

1.36 to 1.43

*Density for units in this class tested to date:*

0.99 to 1.75

*Halftone range:*

Halftone output is visible from the 15% dot-fill level, which is the minimum coverage level on the original) to the 100% level, with distinct transitions between most levels and smooth coverage within levels.



Measurements are based on four readings corresponding to four different solid black locations on the output. The higher the density reading, the darker the image.

PRODUCTIVITY

Job Stream:

The unit completed the job stream in 42.40 seconds, running at 26.89 ppm, which translates to an efficiency rate of 59.75%.

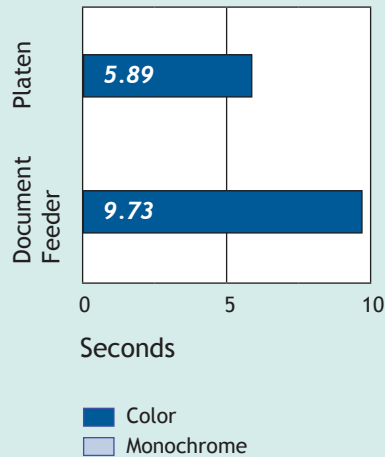
BLI's job stream includes Word documents, Outlook e-mail messages, Excel spreadsheets, PowerPoint, HTML and Acrobat PDF files, totaling 19 pages. This test simulates the type of traffic a typical device might experience in a real-world, multi-user environment. All of the files are sent to the printer as a group, at which time the stopwatch begins; timing ends when the last page of the last file exits the device. Job stream efficiency is the percentage of the rated speed at which the unit operates when producing real-world jobs.

First-copy time:

5.89 seconds from the platen.

9.73 seconds from the document feeder.

First-copy time

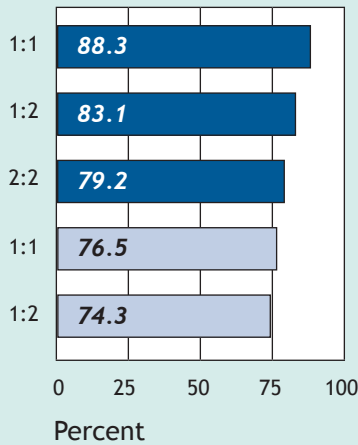


LABTEST



COPY/PRINT EFFICIENCY FOR MULTIPLE SETS

Overall Efficiency



BLI obtains the overall efficiency for each copy/print mode by averaging the efficiency ratings (derived by dividing the tested speed of the device by the rated speed, and then multiplying by 100) for each run length (1,5, 10 and 20 sets in copy mode and 1 and 5 sets in print mode).

■ Copy  
■ Print

Sets	Originals	Min.	Sec.	PPM	Efficiency	Overall Efficiency
COPY 1:1						
1	10	0	26	22.9	65.5%	65.5%
5	10	1	33	32.2	91.9%	78.7%
10	10	2	57	33.9	96.7%	84.7%
20	10	5	46	34.6	99.0%	<b>88.3%</b>
COPY 1:2						
1	10	0	30	20.0	57.1%	57.1%
5	10	1	40	29.9	85.5%	71.3%
10	10	3	4.9	32.4	92.7%	78.4%
20	10	5	53	34.0	97.0%	<b>83.1%</b>
COPY 2:2						
1	20	1	11	16.9	48.2%	48.2%
5	20	3	29	28.7	82.0%	65.1%
10	20	6	17	31.9	91.0%	73.8%
20	20	11	57	33.5	95.7%	<b>79.2%</b>
PRINT 1:1						
1	10	0	27	21.8	62.4%	62.4%
5	10	1	35	31.7	90.6%	<b>76.5%</b>
PRINT 1:2						
1	10	0	29	20.9	59.6%	59.6%
5	10	1	36	31.2	89.0%	<b>74.3%</b>

Efficiency is tested using a 10-page document. In print mode, the document is printed using the PostScript driver at 600-dpi resolution.

LABTEST



**PRINT DRIVERS**

**CANON IMAGERUNNER 3570 PRINT DRIVER FEATURES**

Windows 2000	PCL 6	PostScript	UFR II
Auto Feature/Device Detection	Yes	Yes	Yes
Booklet Printing	Yes	Yes	Yes
Collate Sets	Yes	Yes	Yes
Max paper sources per job	3	3	3
N-up Printing	2 to 16	2 to 16	2 to 16
Overlay	Yes	Yes	Yes
Paper Gauge	Yes	Yes	Yes
Print and Hold	Yes	Yes	Yes
Proof Print	Yes	Yes	Yes
Quantity Selection	Up to 9,999	Up to 9,999	Up to 9,999
Reduction/Enlargement	25% to 400%	25% to 400%	25% to 200%
Resolution Modes	600	600	600
Save Settings	Yes	Yes	Yes
Secure Printing	Yes	Yes	Yes
Watermarks/Custom Watermarks	Yes/Yes	Yes/Yes	Yes/Yes

**TONER YIELD**

**Tested Toner Yield/Cost Per Page**

Toner Cartridge Net Weight (Grams)	Toner Yield (Impressions)	Impressions Per Gram	Toner Cost Per Page <sup>1</sup>	Supplies Cost Per Page <sup>2</sup>
1,195	20,196	16.9	0.344¢	0.344¢

<sup>1</sup> Testing was conducted using BLI's toner yield test original with 6% page coverage.

<sup>2</sup> Supplies cost per page is based on BLI's tested toner yield and Canon's suggested retail pricing. Toner is the only supply used by this product.

LABTESTS

**Canon imageRUNNER 3570**

**Manufacturing Status: New**  
**Console, digital Monochrome copier, MF**  
**Dry, mono component toner**



FAD 13152

<b>BACKGROUND INFO</b>	Dataquest Segment 3
SRP (USA; Canada):	\$8,800; \$11,100
Domestic Intro Date:	October 2004
OEM:	Canon (China)
Also Sold As:	None
Distribution:	Dealers and subsidiaries
Max Mo Duty Cycle:	130,000 copies

**■ MULTIFUNCTION MODES**

Copier:	Std	Fax:	Opt
Internet Fax:	Opt	Network Fax:	Opt
Network Printer:	Opt	PC Fax:	Opt
Printer:	Opt	Scanner:	Std

**■ GENERAL SPECS/PAPER HANDLING**

First Copy Time:	3.9 sec
Multicopy (Ltr/Lgl/Ldgr):	35/16/22 cpm
Warm-up Time:	30 sec
Std Paper Source(s):	Dual drawer
Std Paper Capacity:	550/550 sheets
Paper Weights:	17 to 20 lbs
Bypass/Paper Weights:	50-sheet/17 to 32 lbs
Max Paper Sources/Cap:	6/4,750 sheets
Max Original Size:	11 x 17
Min/Max Output Size:	5-1/2 x 8-1/2 (or 5-9/16 x 7-1/8 free size)/11 x 17
Scan/Copy Resolution:	600 x 600 dpi
Std/Max Copier Memory:	512-MB RAM, 20-GB/512-MB RAM, 20-GB HD
Duplex:	Auto (1:2,2:2,2:1)
Capacity/Paper Sizes:	Unlimited/5-1/2 x 8-1/2 to 11 x 17
Document Feeder:	Opt RADF
Speed/Capacity:	45 opm/50 orig
Paper Weights:	13 to 32 lbs
Stapler Sorter:	None
Bins/Stapling Cap:	Not applicable
Stapling Positions:	Not applicable
Finisher:	Opt finishers
Tray/Stapling/Pos(s):	2,000, 2,000, 1,000/50/7, 6, 1

Other: Opt 2-/3-hole punch for each finisher; opt envelope feeder (50 envelopes); opt 300-sheet add'l tray for Finisher S1; opt 150-sheet copy tray; opt 350-sheet inner 2-way tray

**■ COPIER FEATURES**

Automatic Features:	AES, AMS, APS, AS, ATS	Job Programs:	9
Book Copy:	Yes	Job Time:	Yes
Booklet Mode:	Std	Language:	Std
Color:	No	Margin Shift:	Yes
Copy Control:	1,000	Neg/Pos:	Yes
Covers:	Std	OHP Interleaving:	Yes
Editing:	No	Photo Mode:	Yes
Energy-Save:	Yes	Preset R/E:	5R,4E
Erase:	Std	Program Ahead:	Std
Image Insert:	Yes	Sheet Insertion:	Std
Image Overlay:	Std	Stamping:	Std
Image Repeat:	Yes	Timer:	Yes
Image Rotate:	Std	2-in-1:	Std
Interrupt:	Yes	XY Zoom:	Yes
Job Build:	Yes		
Zoom Range:	25 to 400 (1%)		

**■ OTHER FEATURES:** Mixed-size originals; 25% to 200% zoom range through the document feeder; chapterization; scan once, print many; page numbering; copy set numbering; watermark and date printing on copies ; opt saddle finisher has two trays (1,000/1,000), V-folding of up to 15 sheets and opt 2-/3-hole punch; opt inner 2-way tray (250/100); incorporates Canon's MEAP (Multifunctional Embedded Application Platform) to allow customizable software applications to run within the machine

## MULTIFUNCTIONALITY

### CONNECTIVITY SPECS

Client OS Support:	Win 9x, NT 4.0 Me, 2000, XP, Mac 8.0+		
Parallel Interface:	None		
PC Fax/Print/Scan:	Not applicable		
Serial Interface:	None		
PC Fax/Print/Scan:	Not applicable		
USB Interface:	Std		
PC Fax/Print/Scan:	Yes/Yes/Yes		
Network Interface:	Std Ethernet		
Interface Type:	10/100BaseTX		
LAN Fax/Print/Scan:	Yes/Yes/Yes		
Networks Supported:			
NetWare:	Yes	Windows NT:	Yes
AppleTalk:	Yes	UNIX:	Yes
AS/400:	Yes	Other:	Novell 3.x-6.x

### PRINTER SPECS

Engine Mfr/Model:	Canon/imageRUNNER 3570		
Compatibility:	IBM PC, Mac		
Speed:	35 ppm		
Max Print Area:	10-3/4 x 16-3/4		
Enhanced Resolution:	2400 x 600 dpi		
Unenhanced Resolution:	600 x 600 dpi		
Std/Max Printer Memory:	Shared		
Controller Mfr/Model:	Canon/Multi-PDL Printer kit-E1		
Processor/Bits/MHz:	Canon processor/Info not avail/INA		
PDL/PCL:	PCL 5e/6, PostScript 3, UFR II		
Controller Mfr/Model:	Not applicable		
Processor/Bits/MHz:	Not applicable		
PDL/PCL:	Not applicable		
Controller Mfr/Model:	Not applicable		
Processor/Bits/MHz:	Not applicable		
PDL/PCL:	Not applicable		
Other:	100 mailboxes; secure printing; Page Composer UFR II print technology; optional encrypted printer driver		

### SCANNER & IMAGE MANAGEMENT SPECS

Connection Type:	Network		
Technology/Speed:	CIS/45 ipm		
Max Resolution:	600 x 600 dpi		
TWAIN Compatible:	Yes		
Scan Destinations:			
E-Mail:	Yes	I-fax:	Yes
FTP:	Yes	SMB:	Yes
HDD:	Yes	URL:	Yes
LDAP	Yes		
Scan/Image Software:	Opt eCopy ScanStation		
OCR Software:	Opt eCopy Desktop		
File Mgmt Software:	Opt eCopy ShareScan OP 2.0		
Other:	Opt eCopy Desktop, Std imageWARE Document Manager Personal		

### FACSIMILE SPECS

Scanner Technology:	CIS		
Compression Method:	MH/MR/MMR/JBIG		
Modem Speed:	33.6 Kbps		
Std/Max Fax Memory:	Shared		
Min/Max Orig Size:	5-1/2 x 8-1/2/11 x 17		
Max Paper/Print Width:	11/10.75		
Effective Scan Width:	11		
Battery Backup:	No		
Relay Request:	Yes		

Confid TX/RX:	Yes/Yes	
Dual Lines:	Opt	
Timers:	Yes	
Multi Access:	Yes	
Dialing Capabilities		
Broadcasting (Grps/Dest):	200/200	
Redial Attempts/Intervals:	1 to 10/2 to 99 min	
One Touch/Speed Dial:	200 / 200	
Other:	Address book (1,800 destinations) including 200 one-touch numbers; 8,000-page fax storage; 1 memory RX button; 50 confidential mailboxes	

COMMENTS 20-GB HDD included with Printer Kit

### ADDITIONAL INFORMATION

Control Panel:	Keypad and touch screen	
Quantity Selector:	1 to 999 (0 to 9 keypad)	
Message Display:	Yes	
Help Key:	Yes	
Dimensions (H x W x D):	29.9" x 22.25" x 27.38"	
Weight (Base Unit):	136 lbs	
Power Reqs (V / Amps):	120 V, 10 A	
Dedicated Outlet:	Yes	
Energy Star-Compliant:	Yes	
Operating Noise Level:	71 dB	

### SUPPLIES / MAINTENANCE

Photoconductor:	Organic drum	
Yield:	85,000	
Price:	\$187	
Toner:	1219g ctrdg	
Yield:	24,000	
Price:	\$69.50	
% Coverage:	6%	
Developer:	Not applicable	
Yield:	Not applicable	
Price:	Not applicable	
PM Schedule:	None set	

### OPTIONS

RADF:	\$1,200
Dual 550-sheet cassette unit:	\$1,450
2,500-sheet paper deck:	\$2,100
Finisher Q-3/Saddle-stitch finisher:	\$2,700/\$4,000
Document tray J1/Accessibility handle:	\$55/\$139
Finisher S1/Braille kit:	\$1,230/\$30
Add'l tray for finisher S1/Cabinet:	\$200/\$243
Puncher unit R1/Puncher unit M1	\$670/\$850
Inner 2-way tray/Copy tray J1:	\$100/\$45
Envelope feeder/Platen cover:	\$160/\$100
Multi-PDL printer kit E-1:	\$1,700
imageRUNNER Security kit:	\$550
Universal Send PDF Enhancement kit:	\$1,000
eCopy ShareScan OP 2.0:	\$2,995
eCopy Desktop/Bates stamping unit:	\$ not avail/\$1,495
eCopy ScanStation:	\$3,995
G3 multi-line fax board:	\$1,275
Super G3 fax board:	\$995
Web Access software:	\$1,000
Universal Send kit:	\$1,200
USB application interface board:	\$300
Expansion bus board:	\$100
Card reader C1/Basic card set:	\$306/\$167
Card reader kit:	\$44
Copy card set (1/2/3):	\$153/\$336/\$448
Copy control interface cable:	\$68

# CERTIFICATE OF RELIABILITY

AWARDED TO  
**CANON U.S.A., INC.**

For the performance of the  
**Canon imageRUNNER 3570\***  
throughout BLI's in-house durability test.

This is to certify that when subjected to a 170,000-impression  
Buyers Lab durability test in a networked environment,  
the Canon imageRUNNER 3570 proved to be a highly reliable product.

  
ANTHONY F. POLIFRONE  
MANAGING DIRECTOR

\* Based on the performance of the  
Canon imageRUNNER 4570, which  
is based on the same engine.



*November 2006*  
DATE

THE LEADING INDEPENDENT OFFICE PRODUCTS TEST LAB AND BUSINESS CONSUMER ADVOCATE  
BUYERS LABORATORY INC. • 20 RAILROAD AVENUE • HACKENSACK, NJ 07601 • USA • WWW.BUYERSLAB.COM  
Copyright 2006 Buyers Laboratory. This certificate has been reproduced with the written permission of BLI.