

PIXMA

iP6220D/iP6210D

Quick Start Guide

Table of Contents

Introduction	1
Preparing the Printer	2
Selecting a language displayed on the LCD	2
Installing the FINE Cartridges	3
Aligning the Print Head	4
Installing the Printer Driver	5
Installing the Printer Driver - Windows	5
Installing the Printer Driver - Macintosh	8
Basic Operations	10
Printing with Windows	10
Printing with Macintosh	11
Replacing a FINE Cartridge	12

Exif Print

This printer supports ExifPrint.

Exif Print is a standard for enhancing the communication between digital cameras and printers.

Canadian Radio Interference Regulations

This digital apparatus does not exceed the Class B limits for radio noise emissions from a digital apparatus as set out in the interference-causing equipment standard entitled "Digital Apparatus," ICES-003 of the Industry Canada.

Cet appareil numérique respecte les limites de bruits radioélectriques applicables aux appareils numériques de Classe B prescrites dans la norme sur le matériel brouilleur NMB-003 d'Industrie Canada intitulée « Appareils numériques ».

International ENERGY STAR® Program

As an ENERGY STAR® Partner, Canon Inc. has determined that this product meets the ENERGY STAR guidelines for efficiency.



The International ENERGY STAR® Office Equipment Program is a global program that promotes energy saving through the use of computer and other office equipment. The program backs the development and dissemination of products with functions that effectively reduce energy consumption. It is an open system in which business can participate voluntarily. The targeted products are office equipment such as computers, monitors, printers, faxes and copiers.

Their standards and logos are uniform among participating nations.

Power Requirements

Never use a power supply voltage other than that supplied in the country of purchase. Using the incorrect voltage could cause a fire or electric shock. The correct power supply voltages and frequencies are as follows:

AC 110-120V, 50-60Hz

AC 220-240V, 50-60Hz

Introduction

This *Quick Start Guide* uses the following symbols to indicate important information. Always observe the instructions indicated by these symbols.

Warning

Instructions that, if ignored, could result in death or serious personal injury caused by incorrect operation of the equipment. These must be observed for safe operation.

Caution

Instructions that, if ignored, could result in personal injury or material damage caused by incorrect operation of the equipment. These must be observed for safe operation.

Also read the Safety Precautions in the *User's Guide*. Observe the warnings and cautions to avoid personal injury or damage to the printer.

The diagrams and computer screens in this guide refer to the iP6220D. The operations are the exactly the same with the iP6210D, unless otherwise described.

Trademark Notices

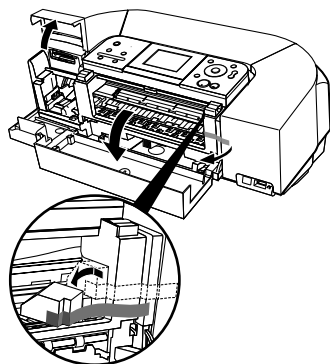
- “Windows” is a trademark of Microsoft Corporation, registered in the United States and other countries.
- “Macintosh” and “Mac” are trademarks of Apple Computer, Inc., registered in the U.S. and other countries.
- “Microdrive” is a trademark of International Business Machines Corporation.
- “SmartMedia” is a trademark of Toshiba Corporation.
- “MEMORY STICK”, “Memory Stick PRO”, “MEMORY STICK Duo” and “Memory Stick Pro Duo” are trademarks of Sony Corporation.
- “xD-Picture Card” is a trademark of Fuji Photo Film Co., Ltd.
- “MultiMediaCard” is a trademark of Infineon Technologies AG.
- “SD card” and “miniSD Card” are trademarks of SD Association.
- “IrDA Feature Trademark” is owned by the Infrared Data Association and used under license therefrom.
- “Bluetooth” is a trademark of Bluetooth SIG, Inc., U.S.A. and are licensed to Canon Inc.

Copyright ©2005 CANON INC.

All rights reserved. No part of this publication may be transmitted or copied in any form whatsoever without expressed written permission from Canon Inc.

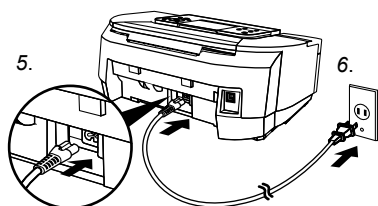
Preparing the Printer

Selecting a language displayed on the LCD



- 1 Place the printer on a flat surface.
- 2 Remove the shipping tape from the front and back of the printer.

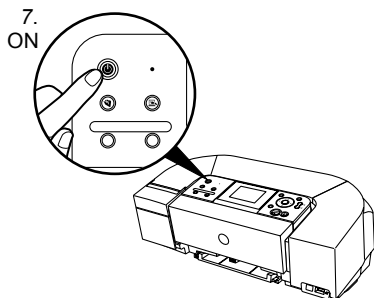
The tape position is subject to change.
- 3 Open the card slot cover first and the front cover next. Pull down and remove the protective material on the right side.
- 4 Close the front cover first and the card slot cover next.



- 5 Plug the power cord into the back of the printer.
- 6 Plug the power cord into the power outlet.

↳ **Note**

Do not connect the USB cable at this stage.



- 7 Turn on the printer.

The **POWER** lamp flashes and the printer begins to operate. Wait until the **POWER** lamp remains fully lit.

- 8 Select a language.

When the screen appears on the LCD;

- iP6220D
Use the ▲ ▼ buttons to select a language and then press the **OK** button.

↳ **Note**

If you leave the printer more than five minutes without using any button on the operation panel, the LCD goes into sleep mode automatically. Press the **OK** button to turn on the LCD again.

- iP6210D
Use the ◀ ▶ buttons to select a language and then press the **OK** button.

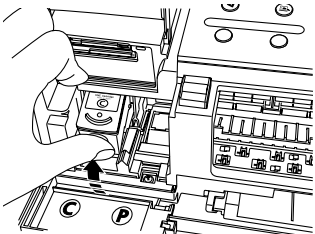
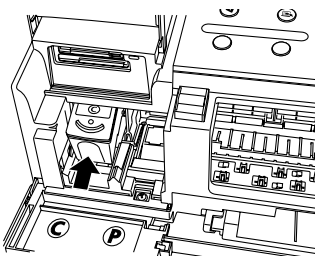
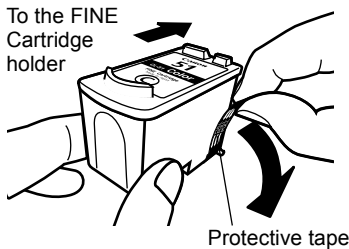
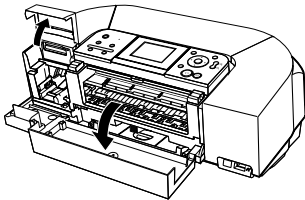
Installing the FINE Cartridges

Warning

- Never attempt to plug the power cord into the power outlet or unplug the power cord when your hands are wet.
- Never damage, modify, stretch, or excessively bend or twist the power cord. Do not place heavy objects on the power cord.
- Never use any power supply other than the standard power supply available in the country of purchase. Using the incorrect voltage and frequency could cause a fire or electric shock.
- Always push the plug all the way into the power outlet.

Caution

- For safety reasons, store FINE Cartridge out of the reach of small children.
- Do not drop or shake FINE Cartridge as this may cause the ink to leak out and stain your clothes and hands.



- 1** Open the card slot cover first and the front cover next.

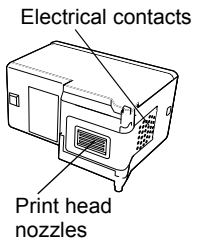
The FINE Cartridge holder automatically moves to the left.

- 2** Take out the Color FINE Cartridge (CL-51) from its box.

- 3** Remove the protective tape gently.

Notes

- Do not touch the electrical contacts or print head nozzles on a FINE Cartridge.
- Handle the removed protective tape carefully to avoid getting your hands dirty or staining surrounding work area.
- Do not attempt to reattach the protective tape once you have removed it.



- 4** Insert the Color FINE Cartridge slightly slanted into the left slot (C).
- 5** Push up the Color FINE Cartridge until it clicks into place.
- 6** Use the same procedure to install the Photo FINE Cartridge (CL-52).

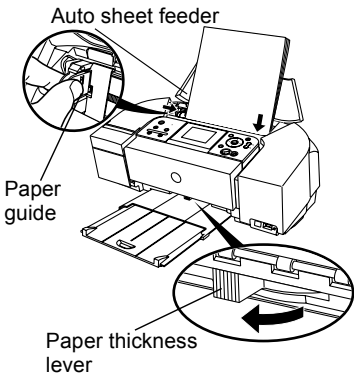
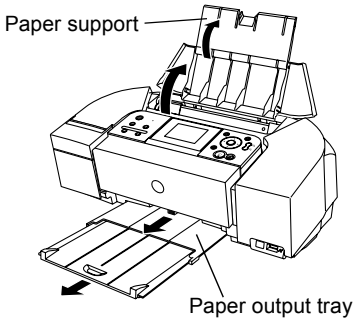
The Photo FINE Cartridge should be installed into the left slot (P).

- 7** Close the front cover first and the card slot cover next.

Wait until the preparatory operation is complete; it takes about one to two minutes.

The message requesting head alignment is displayed on the LCD. See "Aligning the Print Head" on page 4.

Aligning the Print Head



- 1 Open the paper support and pull out the paper output tray.

- 2 Load the A4/Letter-sized plain paper, aligning it with the right side of the auto sheet feeder.

→ **Note**

Ensure that the paper thickness lever is set to the left position.

- 3 Pinch the paper guide and slide it against the left side of paper.

- 4 Align the print head.

Ensure that the message requesting head alignment is displayed on the LCD:

- iP6220D
Use the ▲ ▼ buttons to select **Yes** and then press the **OK** button.
- iP6210D
Use the ◀ ▶ buttons to select **YES** and then press the **OK** button.

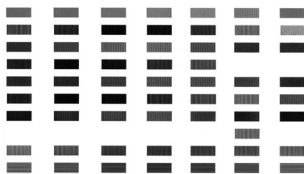
The pattern is printed. It takes about four minutes to finish printing, and the print head is aligned automatically.

- 5 Ensure the pattern shown on the left is printed.

The printer is now ready to use.

→ **Notes**

- If pattern is not printed successfully, refer to “Aligning Print Head - Auto head align” in the *Direct Printing Guide*.
 - The pattern is printed in black and blue.
-



Installing the Printer Driver

Installing the Printer Driver – Windows®

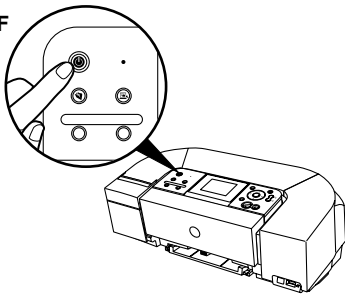
→ Notes

- Before installing the driver, disable all anti-virus programs and automatically loading programs.
- The screens shown in this guide are for a computer running Windows XP with Service Pack 2 installed. Screens may differ depending on the operating system used.
- When installing the printer driver in Windows XP or Windows 2000, log on to the system as a member of the **Administrators** group.
- Do not switch users during the installation process.

If the following screen appears automatically, click **Cancel** to quit the screen and turn off the printer. Next, remove the USB cable connected to your computer. Then follow steps 3 to 10 to install the printer driver.



OFF



1 Ensure that the printer and computer are turned off.

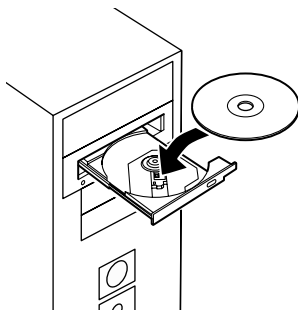
2 Turn on the computer and start Windows. If any applications automatically run, quit them.

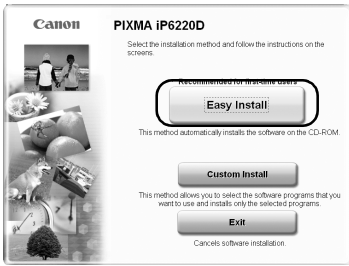
Do NOT turn the printer on at this stage.

3 Place the *Setup Software & User's Guide* CD-ROM in the CD-ROM drive.

→ Notes

- If the **Select Language** screen appears, select a language, then click **Next**.
- If the **Select Your Place of Residence** appears, select your place of residence, then click **Next**.





- 4 Follow the instructions displayed on the screen. When the screen shown on the left is displayed, click **Easy Install**.

→ **Notes**

- When you select **Easy Install**, the items included in the CD-ROM are installed automatically. To select particular items to install, click **Custom Install** and follow the instruction on the screen.
- To install PhotoRecord, click **Custom Install** and follow the instruction on the screen.

- 5 When the list of applications to install appears, verify the contents, click **Install**, and then follow the instructions on the screen.

Move the cursor over items to display explanations of each application below.

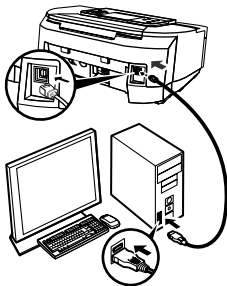
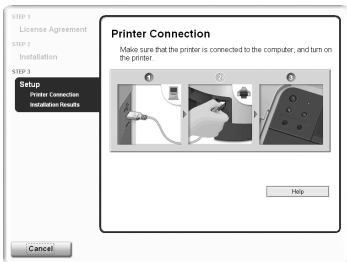
- 6 Read the **License Agreement** and click **Yes**.

Installation of the printer driver, on-screen manuals, and applications will begin. Follow the instructions displayed on the screen.

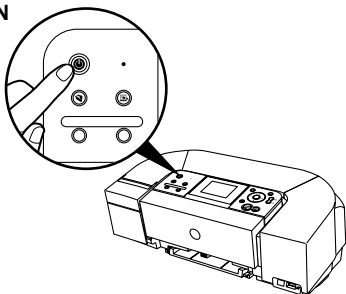
If a message asking for your confirmation to restart your computer appears, click **OK**.

The system is restarted automatically.

- 7 When the screen shown on the left appears, connect the printer to the computer with the USB cable.



ON



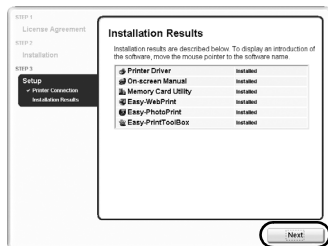
8 Turn the printer on.

If a message asking for your confirmation to restart your computer appears, click **OK**. The system is restarted automatically.

↳ **Note**

If the connection is not recognized, refer to “Cannot Install Printer Driver” in the *User’s Guide*.

9 When the **Installation Results** screen appears, click **Next**.



10 When the Installation completed successfully screen appears, click **Exit**.

If the screen shows a check box for restarting your system, you can restart the system instead of just exiting the program.

To restart the system, ensure that the check box is selected, and then click **Restart**.

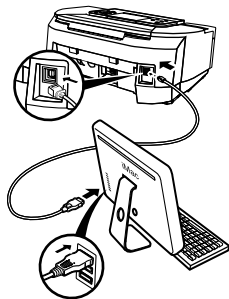
↳ **Notes**

- To view the On-screen Manual, double-click the **iPXXXXXX On-screen Manual** shortcut icon on the desktop, or click **Start** and select **All Programs** (or **Programs**), **Canon iPXXXXXX Manual** and **iPXXXXXX On-screen Manual** (XXXXXX represents 6220D or 6210D).
 - Microsoft Internet Explorer 5.0 or later must be installed to view the On-screen Manuals.
-

Installing the Printer Driver - Macintosh®

↳ Notes

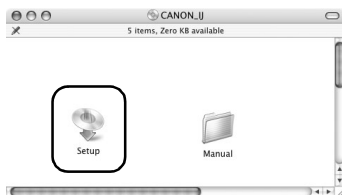
- Before installing the driver, disable all virus detection program and automatically loading programs.
- Do not remove or insert the USB cable during installation as this may result in the computer or printer not operating normally.
- The screens below refer to Mac OS X v.10.3.x installation. Screens may differ depending on the operating system you are using.



- 1** Ensure that the printer is on, and connect the printer to the computer with the USB cable.
- 2** Turn on the Mac OS X.
- 3** Place the *Setup Software & User's Guide CD-ROM* in the CD-ROM drive.

↳ Note

If the CD-ROM does not run automatically, double-click the **CD-ROM** icon on the desktop.



- 4** Double-click the **Setup** icon.
- 5** When the **Authenticate** screen appears, enter your administrator name and password, then click **OK**.

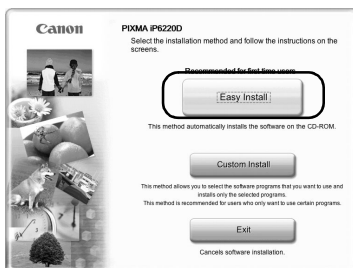
↳ Notes

- If you do not know your administrator name or password, click **?** on the screen, then follow the on-screen instructions.
- If the **Select Language** screen appears, select a language, then click **Next**.
- If the **Select Your Place of Residence** appears, select your place of residence and then click **Next**.

- 6** Follow the instructions displayed on the screen. When the screen shown on the left is displayed, click **Easy Install**.

↳ Note

When you select **Easy Install**, the items included in the CD-ROM are installed automatically. To select particular items to install, click **Custom Install** and follow the instruction on the screen.

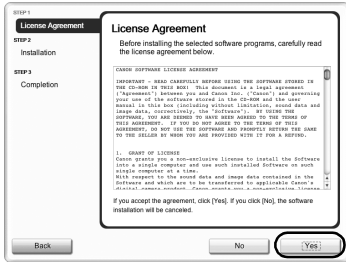


- 7** When the list of applications to install appears, verify the contents, click **Install**, and then follow the instructions on the screen.

Move the cursor over items to display explanations of each application below.

- 8** Read the **License Agreement** and click **Yes**.

Installation of the printer driver, on-screen manuals, and applications will begin. Follow the instructions displayed on the screen.



- 9** When the screen shown on the left appears, click **Restart**.

After restarting the computer, select **Applications** from the **Go** menu. Double-click the **Utilities** folder, and then double-click the **Printer Setup Utility (Print Center)** when you use Mac OS X v.10.2.x icon. Check that your printer name is displayed on the **Printer List**. If your printer name is not displayed on the **Printer List**, click **Add** to add the printer.

For details, refer to the Printer Setup Utility Help in the Mac Help.

→ Notes

- To view the On-screen Manual, double-click the **iPXXXXXX On-screen Manual** alias on the desktop (XXXXXX represents 6220D or 6210D).
 - To install the **User's Guide** in other language than the installed one, double-click the **Manual** folder in **Setup Software & User's Guide CD-ROM, Canon** folder, and then copy a language folder to your hard disk.
-

Basic Operations

Adjusting the print settings according to your needs allows you to produce better quality prints.

Caution

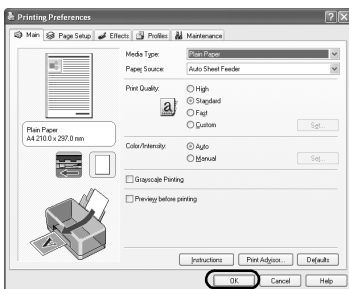
- If you detect smoke, unusual smells or strange noises around the printer, immediately turn the printer off and always unplug the printer. Contact your local Canon service representative.
- To avoid injury, never put your hand or fingers inside the printer while it is printing.

➔ Note

If prints are unclear or specific colors are not reproduced even if there is plenty of ink, print head nozzles may be clogged. Print the nozzle check pattern, check the results, then perform print head cleaning. For details about maintenance, refer to the *User's Guide*.

Printing with Windows

- 1 From your application's **File** menu, select **Print**.
- 2 Ensure that your printer is selected, then click:
 - Windows XP → **Preferences**
 - Windows Me/Windows 98 → **Properties**
 - Windows 2000 → **Main** tab
- 3 Specify the required settings and click **OK**.



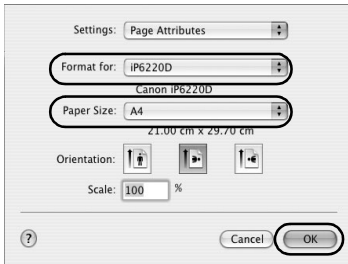
➔ Notes

- For details about the printer driver, refer to the *Printer Driver Guide*.
- Click **Instructions** to view the *Printer Driver Guide*. If the On-screen Manual is not installed, **Instructions** is not displayed.

- 4 To start printing, click **Print**.

Printing will start in a few moments.



- 1 From your application's **File** menu, select **Page Setup**.
- 2 Select your printer model in **Format for**.
- 3 Select the paper size to be used.
- 4 Click **OK**.



- 5 From your application's **File** menu, select **Print**.
- 6 Ensure that your printer model is selected, then select **Quality & Media** from the popup menu.
- 7 Specify the print settings according to your requirements.



➔ Notes

- For details about the printer driver, refer to the *Printer Driver Guide*.
 - Click  to view the *Printer Driver Guide*. If the On-screen Manual is not installed, the *Printer Driver Guide* is not displayed even if  is clicked.
-

- 8 Click **Print**.

Printing will start in a few moments.

Replacing a FINE Cartridge

When the printer runs out of ink, replace the empty FINE Cartridge with a new one. Specify the following FINE Cartridges when purchasing.

Color: CL-51 [High Yield]

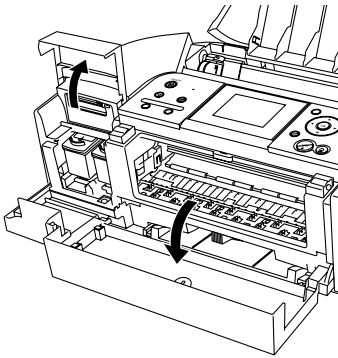


Photo: CL-52



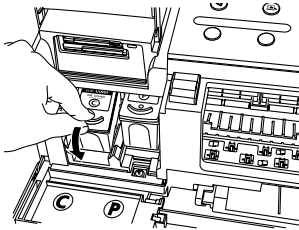
↳ Note

The Standard Color FINE Cartridge (CL-41) can be installed as option.

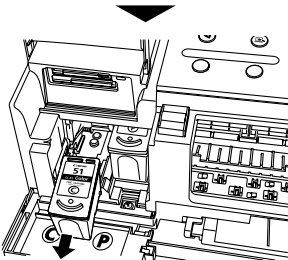


- 1** Open the card slot cover first and the front cover next.

The FINE Cartridge holder moves to the left.



- 2** Remove the empty FINE Cartridge.



Hereafter, follow the steps from step 2 in page 3 to install the new FINE Cartridge.

Regulatory Information

For 110-120V, 50/60 Hz model

Color Printer Model: K10256, K10257

This device complies with Part 15 of the FCC Rules. Operation is subject to the following two conditions: (1) This device may not cause harmful interference, and (2) this device must accept any interference received, including interference that may cause undesired operation.

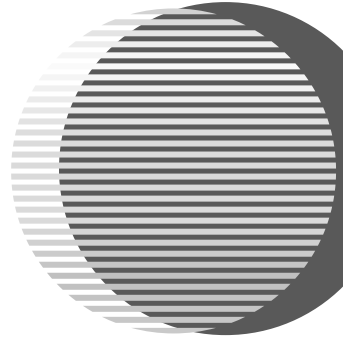
Note: This equipment has been tested and found to comply with the limits for a Class B digital device, pursuant to Part 15 of the FCC Rules. These limits are designed to provide reasonable protection against harmful interference in a residential installation. This equipment generates, uses and can radiate radio frequency energy and, if not installed and used in accordance with the instructions, may cause harmful interference to radio communications. However, there is no guarantee that interference will not occur in a particular installation. If this equipment does cause harmful interference to radio or television reception, which can be determined by turning the equipment off and on, the user is encouraged to try to correct the interference by one or more of the following measures:

- Reorient or relocate the receiving antenna.
- Increase the separation between the equipment and receiver.
- Connect the equipment into an outlet on a circuit different from that to which the receiver is connected.
- Consult the dealer or an experienced radio/TV technician for help.

Use of a shielded cable is required to comply with Class B limits in Subpart B of Part 15 of the FCC Rules.

Do not make any changes or modifications to the equipment unless otherwise specified in the manual. If such changes or modifications should be made, you could be required to stop operation of the equipment.

Canon U.S.A., Inc.
One Canon Plaza
Lake Success, NY 11042
1-516-328-5600



The following FINE Cartridges (High Yield) are compatible with this printer.



The following FINE Cartridge is compatible with this printer as an option.



For details on FINE Cartridge replacement, refer to “Replacing a FINE Cartridge” in this guide.