



[Next >>](#)

Installing Your Multifunction to Your Network for the First Time

PIXMA MG5220

Mac OS

Installing Your Multifunction to Your Network for the First Time

PIXMA MG5220
Mac OS

Preparing to Connect My Multifunction To My Network	3
Connecting Your MG5220 To Your Network	5
Installing The MG5220 Software	12

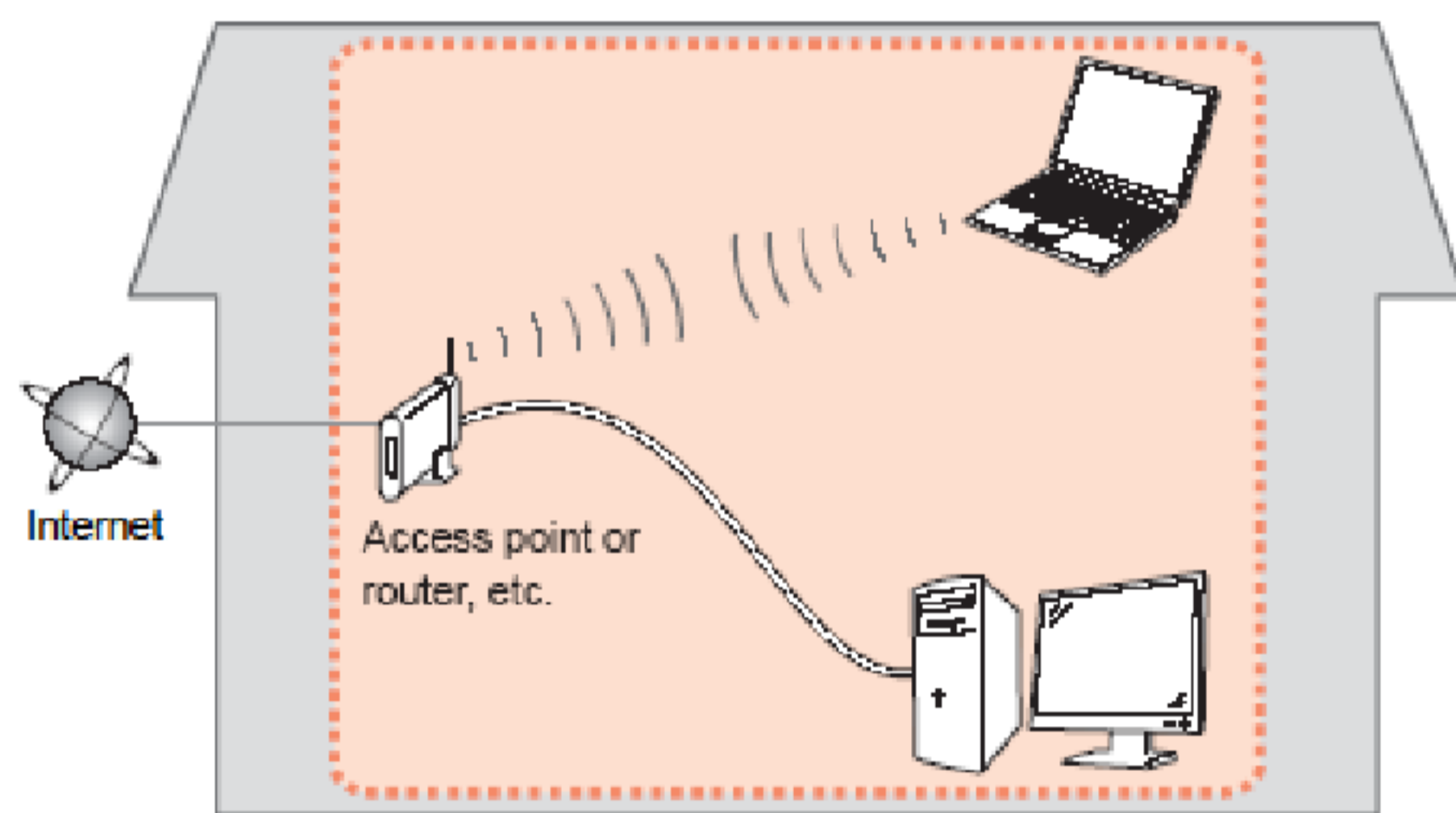
Preparing to Connect My Multifunction To My Network

[<< Previous](#)

[Next >>](#)

Network Requirements

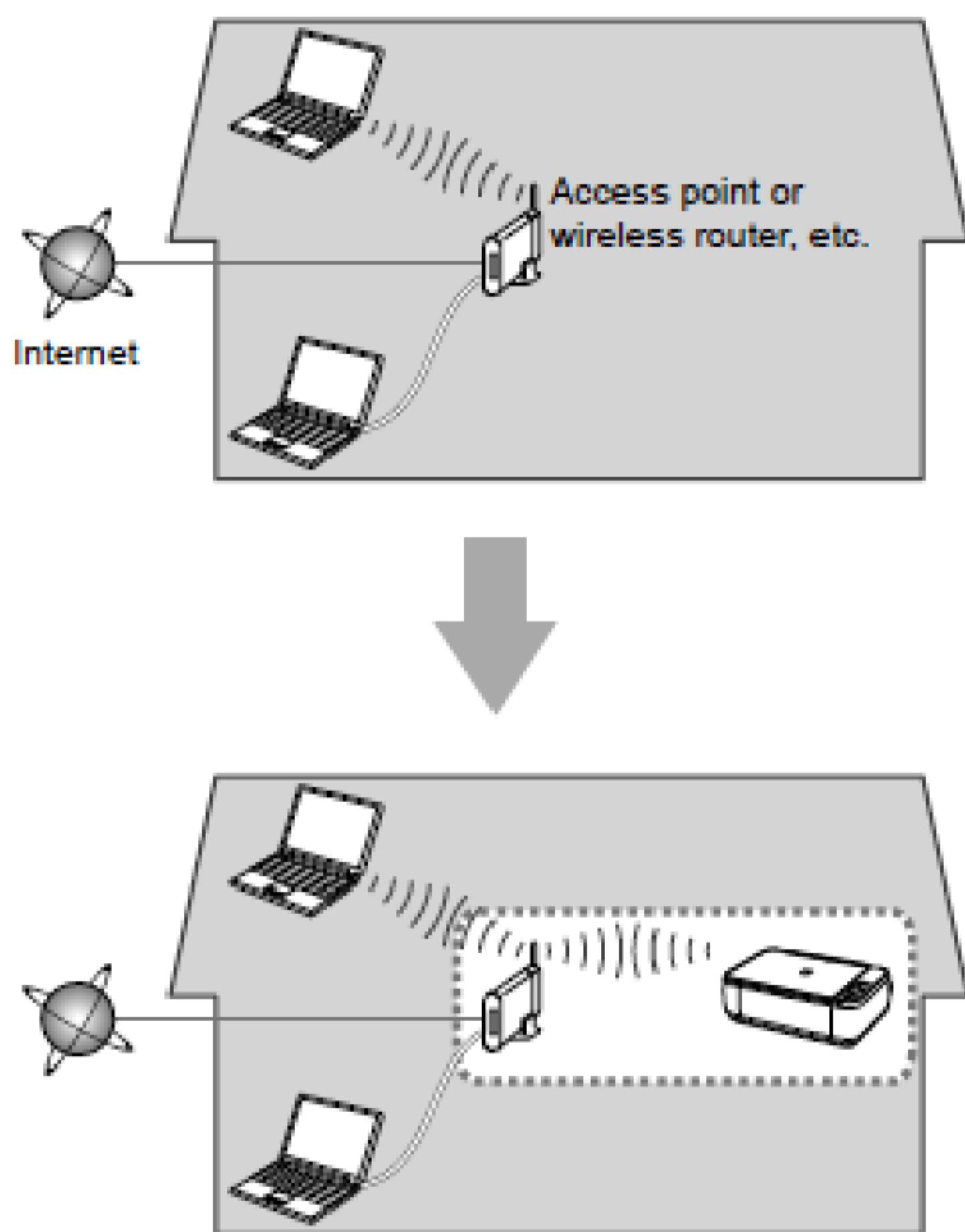
Before connecting the machine to the network, make sure that configuration of the computer and access point or router is complete, and that the computer is connected to the network.



Preparing to Connect My Multifunction To My Network

[<< Previous](#)

[Next >>](#)



An "Ad-hoc connection," which establishes a direct connection to the computer over a wireless connection without using an access point, is not supported.

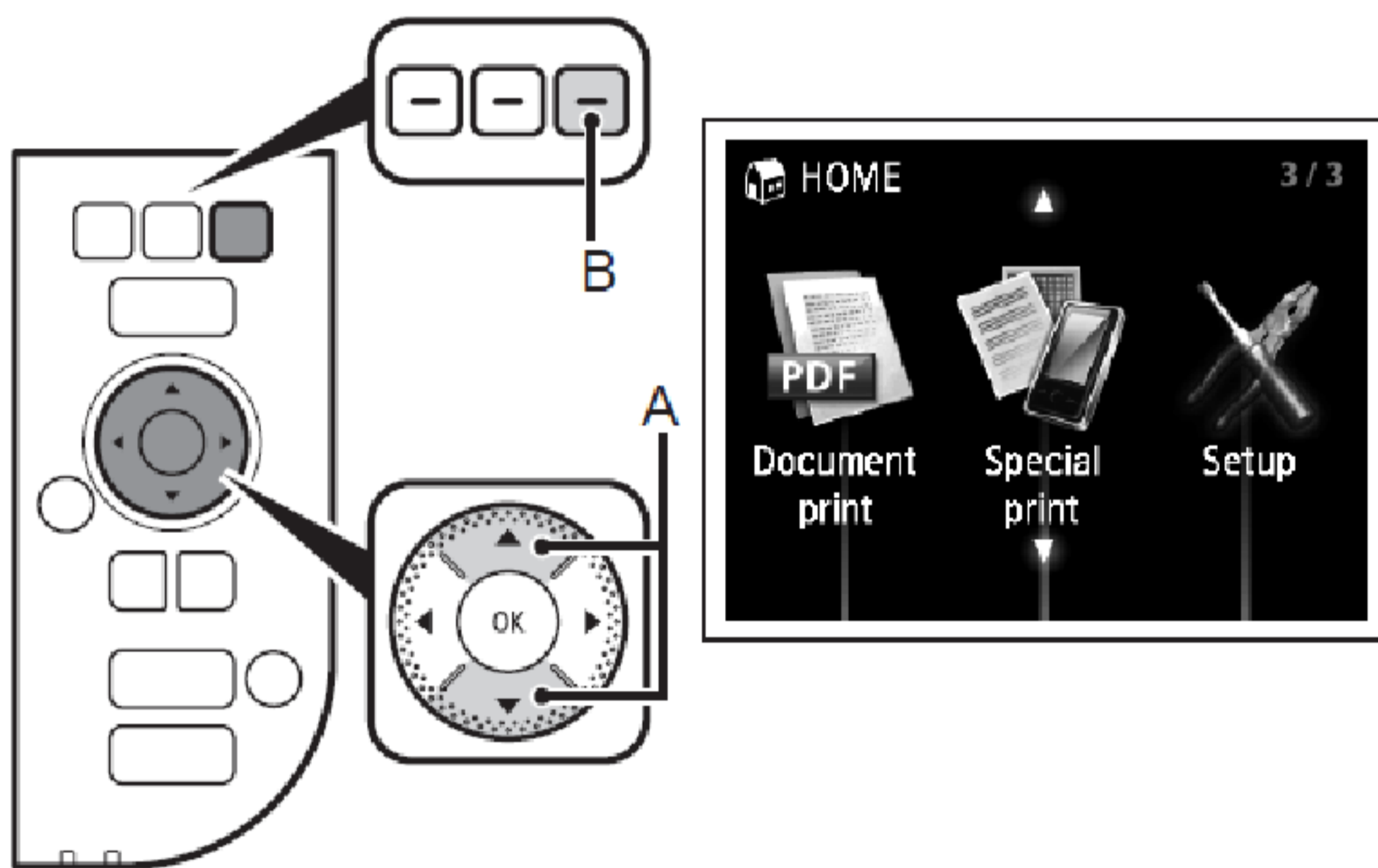
Be sure to prepare an access point.

Notes on Network Connection

- The configuration, router functions, setup procedures and security settings of the network device vary depending on your system environment. For details, refer to your device's instruction manual or contact its manufacturer.
- In an office setup, consult your network administrator
- If you connect to a network that is not protected with security measures, there is a risk of disclosing data such as your personal information to a third party.
- If an error message appears or if you have trouble with the network connection, refer to the printed manual: Network Setup Troubleshooting.
- Place the machine and computer on the same network segment.

Step 1

Use the \uparrow or \downarrow button (A) to display **Setup**, then press the right FUNCTION button (B).



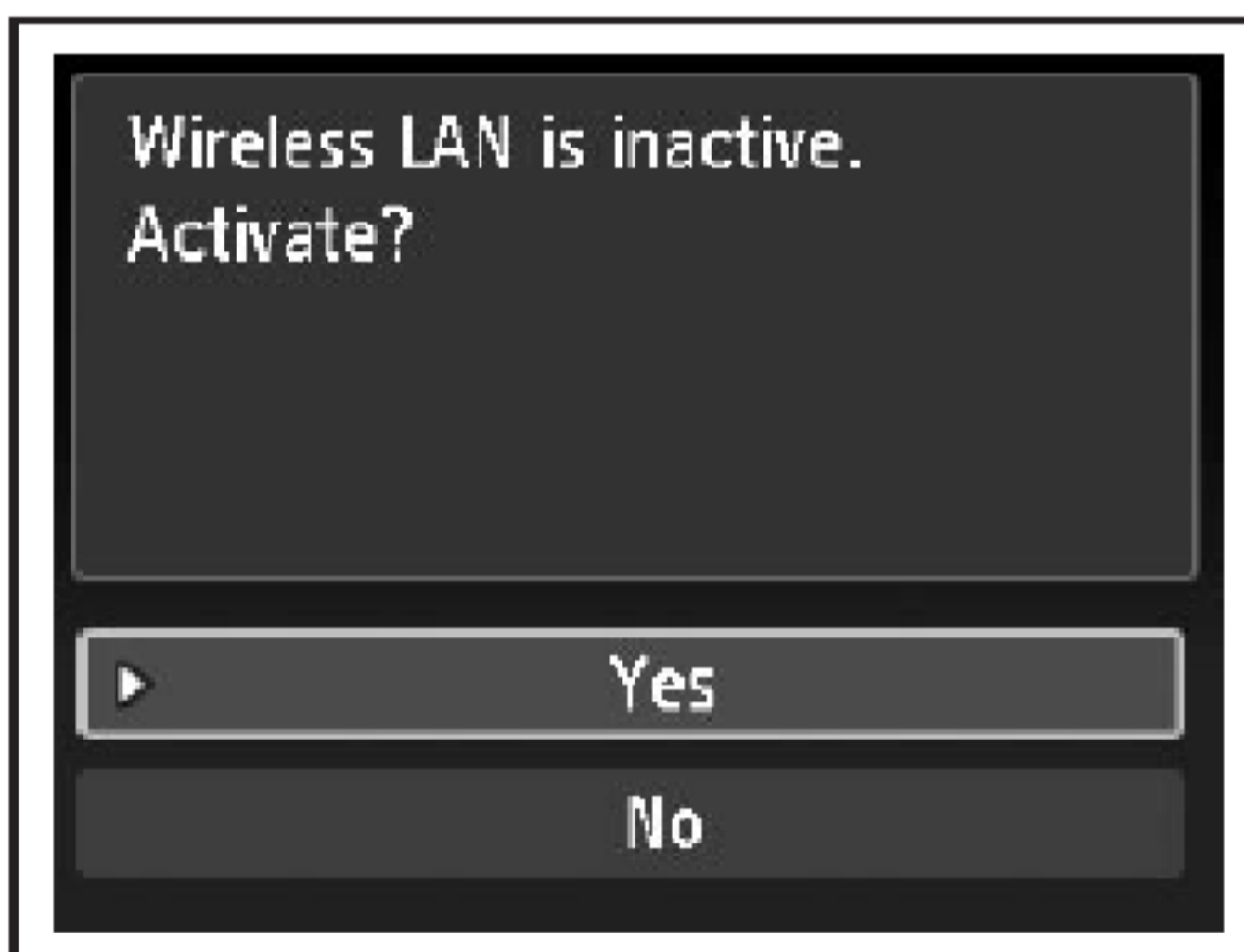
Step 2

Use the \leftarrow or \rightarrow button (C) to select **Wireless LAN setup**, then press the **OK** button.



Step 3

Select **Yes**, then press the **OK** button.

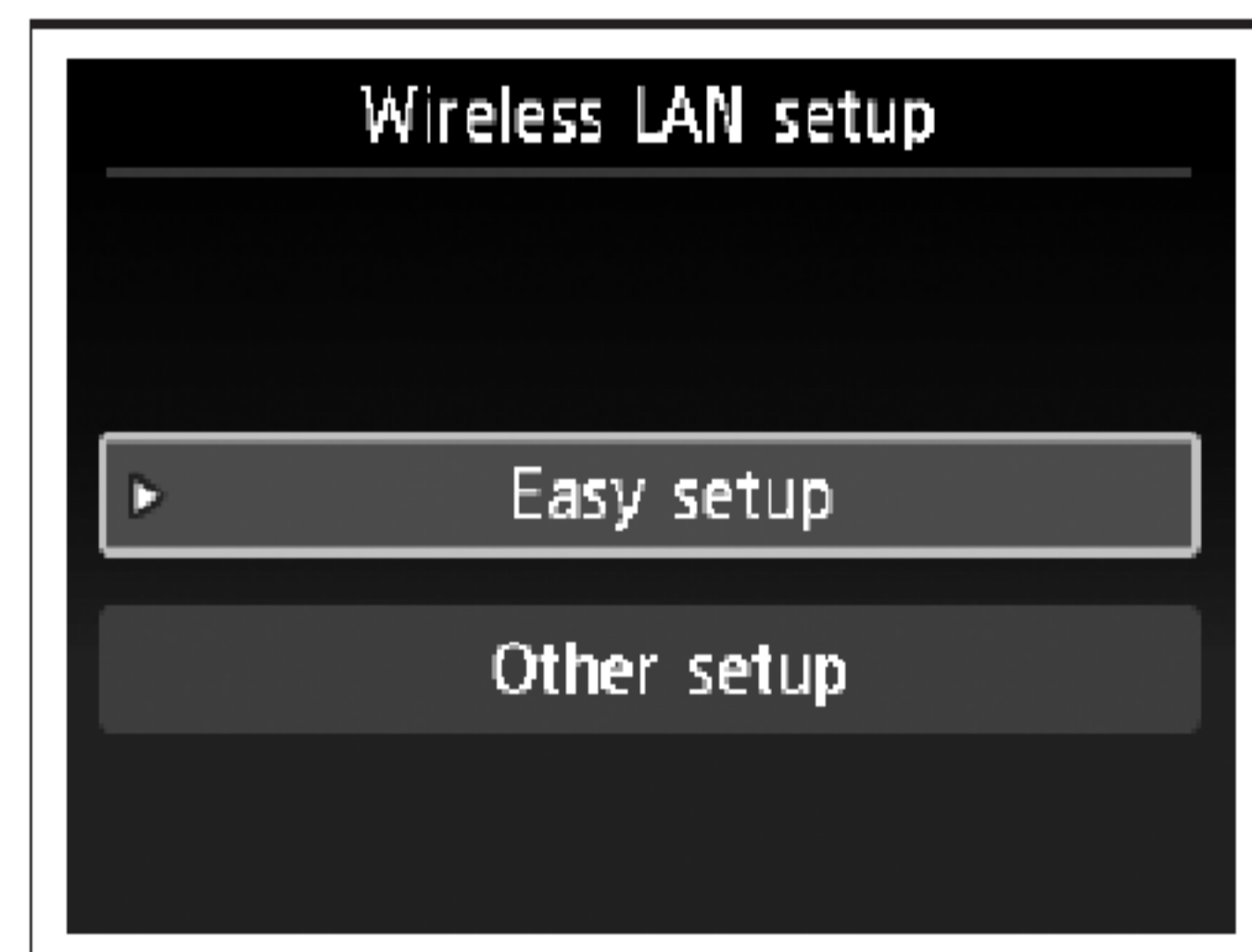


When wireless connection is enabled, the Wi-Fi lamp lights blue.



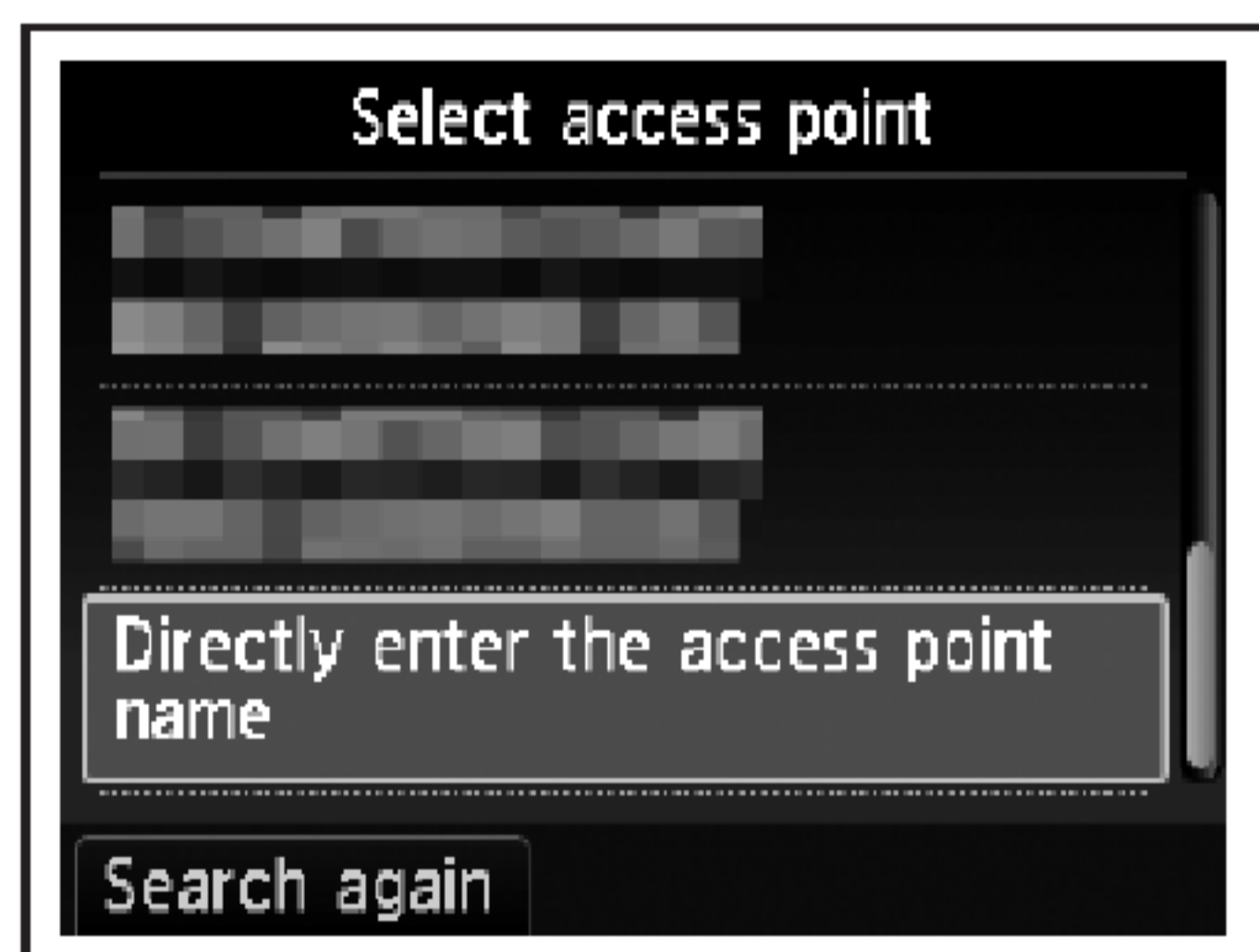
Step 4

Select **Easy setup**, then press the **OK** button.



Step 5

Select the access point name you wrote down, then press the **OK** button.



Note:

- Nearby access points may be detected.
- Access point names with 2-byte characters are not displayed properly, however, they can be selected.

Step 6

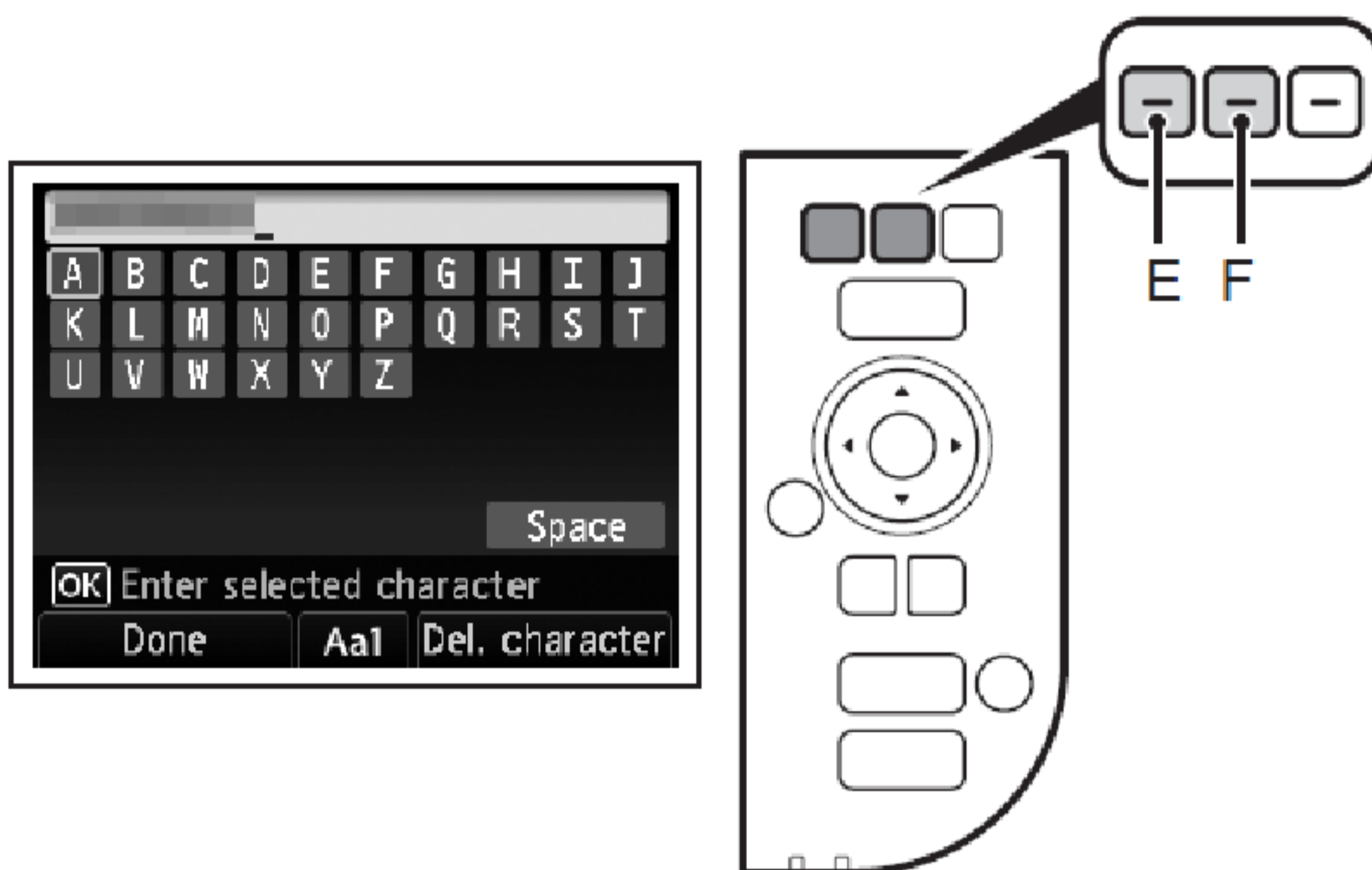
Make sure that one of the below screens is displayed, then press the right FUNCTION button.



If neither is displayed, go to Step 9.

Step 7

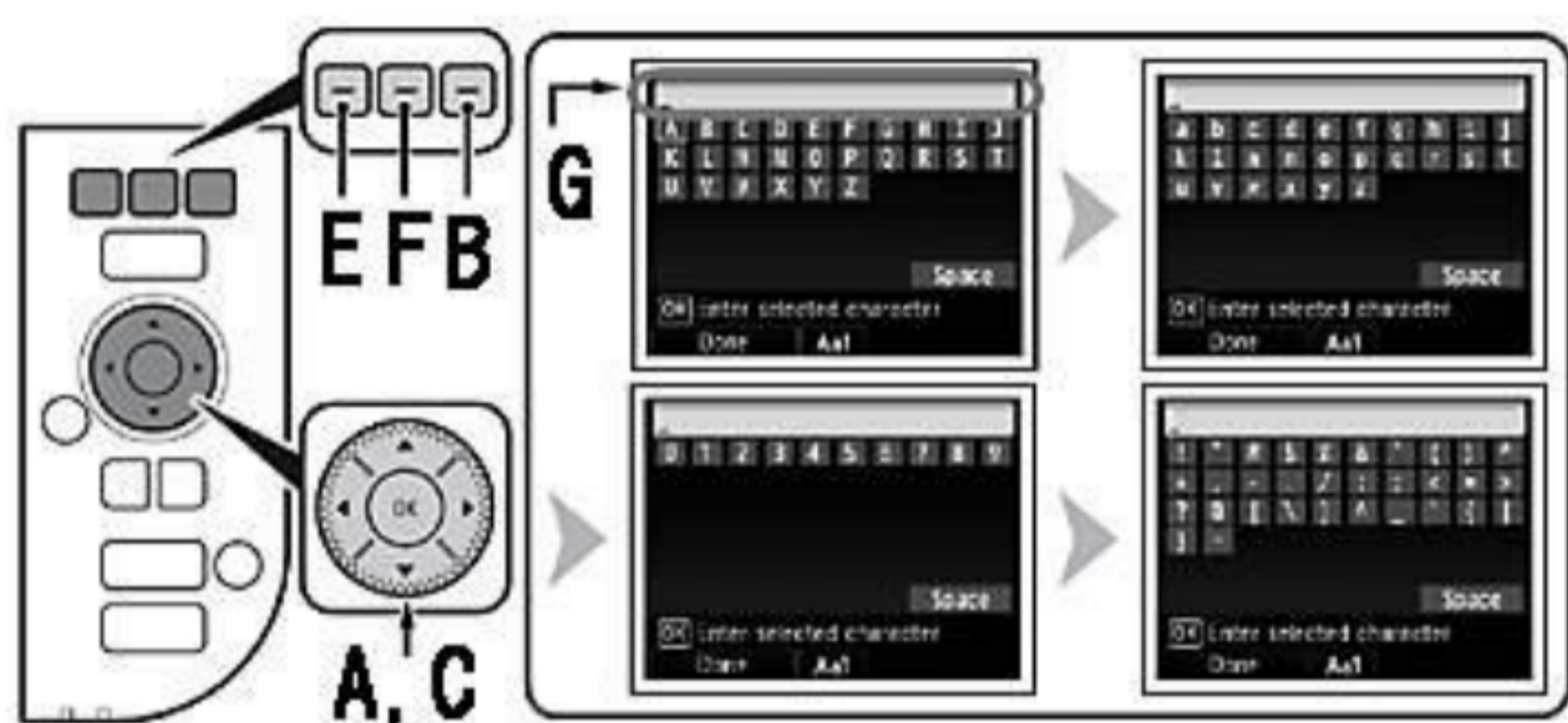
Enter the network key you wrote down on, then press the left FUNCTION button (E).



1. Press the center FUNCTION button (F) to switch character entry modes.
2. Enter upper and lower case letters of the alphabet correctly.

Step 7 (continued) Character Entry

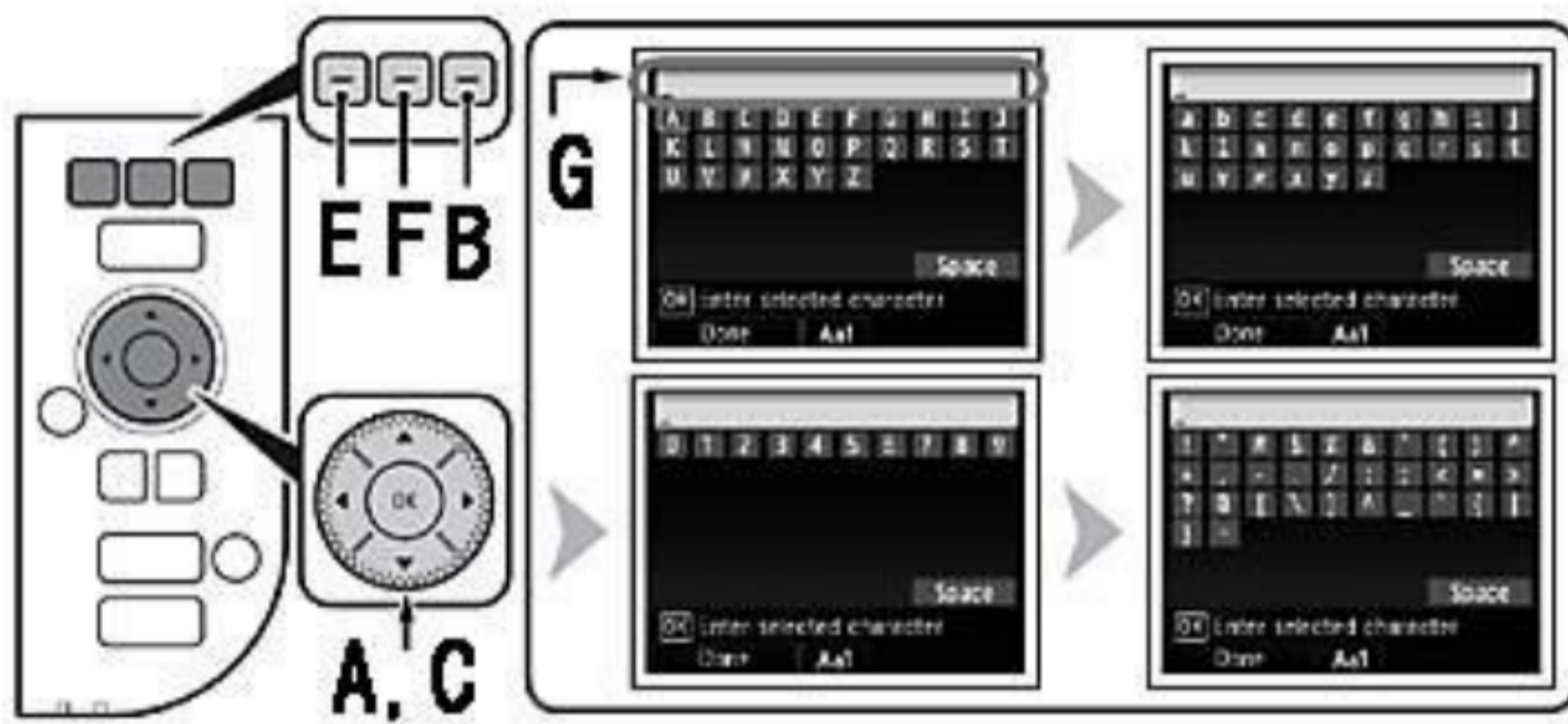
This machine allows you to enter characters when an on-screen keyboard is displayed. Follow the procedure below.



1. When the on-screen keyboard shown above is displayed, press the center FUNCTION button (A) to switch to a keyboard having the characters you want to use.

Four character sets are available: Upper-case alphabets, lower-case alphabets, numbers, and symbols. Each time you press the center FUNCTION button, the on-screen keyboard is switched among them.

Step 7 (continued) Character Entry



- To insert a space, select **Space** on the on-screen keyboard and press the **OK** button.
- To insert characters, select the section (C) of the screen using the \uparrow or \downarrow button, move the cursor to the character on the right of the target position using the \leftarrow or \rightarrow button, then enter characters.
- To delete a character, select the section (C) of the screen using the \uparrow or \downarrow button, move the cursor to the character on the right of the target position using the \leftarrow or \rightarrow button, then press the right FUNCTION button (E).

2. Select a character on the on-screen keyboard using the \uparrow \downarrow \leftarrow \rightarrow buttons (B) then press the OK button to enter it. Entered characters are displayed on the upper section (C) of the on-screen keyboard.
3. Repeat (1) and (2) to enter more characters.
4. After you enter all characters you need, press the left FUNCTION button (D).

Step 8

Make sure that the network key is correct, then press the **OK** button.



Step 9

When the screen below appears, press the **OK** button.



Your MG5220 is now connected to your network

Note:

- If Failed to connect to the access point. appears, press the **OK** button, make sure that the network key is correct, then enter it again. If a connection still cannot be established, refer to the printed manual: *Network Setup Troubleshooting*.

Now that your MG5220 is connected to your network, we need to install the driver and the included software.

Before we begin:

- Log on as the administrator (or a member of the Administrators group).
- Quit all running applications before installation.
- If the firewall function of your security software is turned on, a warning message may appear that Canon software is attempting to access the network. If such a warning message appears, set the security software to always allow access.

Installing The MG5220 Software

[<< Previous](#)

[Next >>](#)

Step 1

Turn on the computer, then insert the Setup CD-ROM into the CD-ROM drive. If you are using Windows, the setup program starts automatically.



Note:

If the program does not start automatically, double-click the CD-ROM icon in Computer or My Computer. When the CD-ROM contents appear, double-click MSETUP4.EXE.


Step 2

Double-click the Setup icon of the CD-ROM folder to proceed to the following screen.



Enter your administrator name and password, then click OK.

If the CD-ROM folder does not open automatically, double-click the CD-ROM icon on the desktop.

If you do not know your administrator name or password, click the help button , then follow the on-screen instructions.

Step 3

Click **Easy Install**

The drivers, application software, and on-screen manuals are installed.

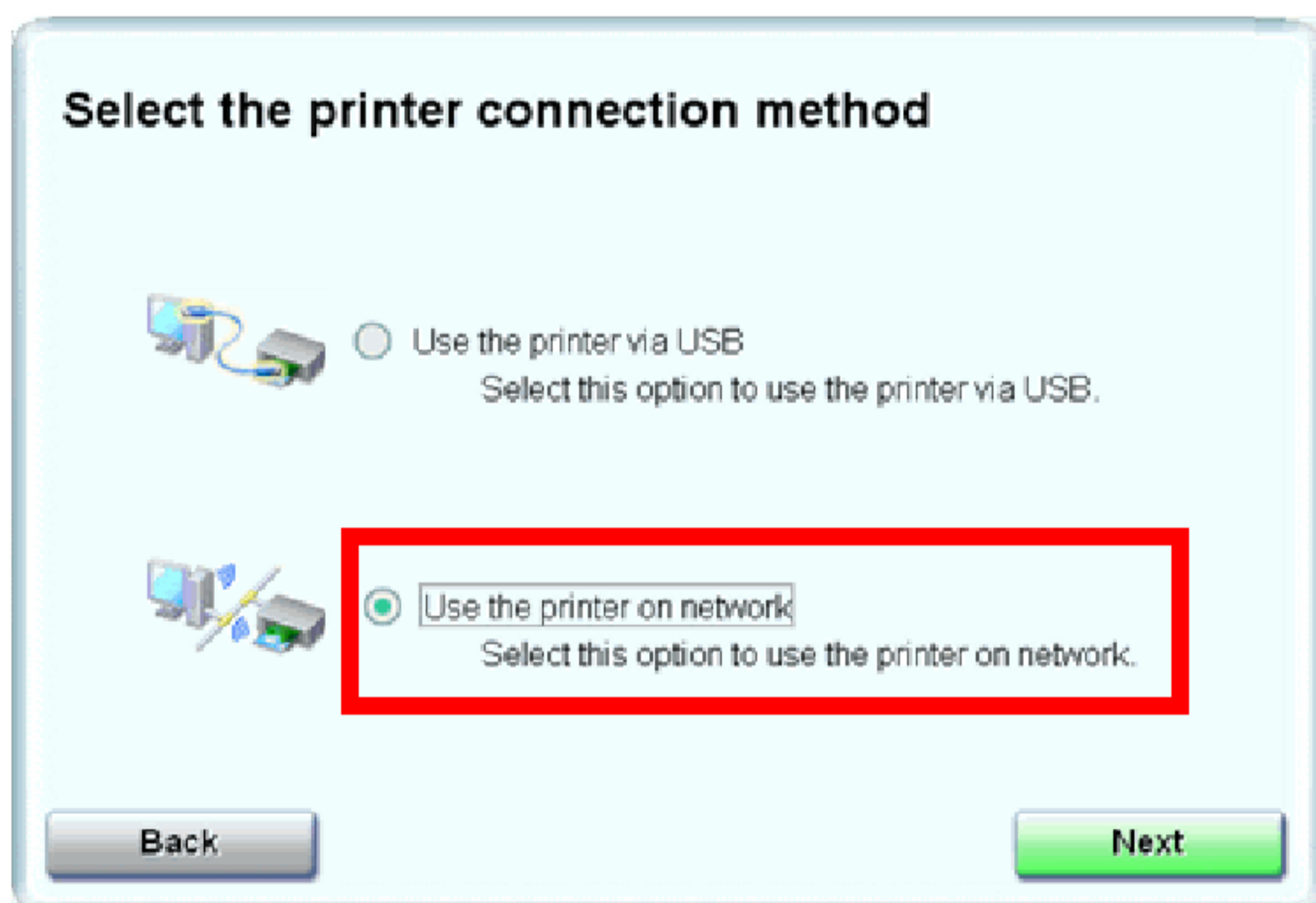
Note: If you want to select particular items to install, click **Custom Install**.

Step 4

Click **Install**

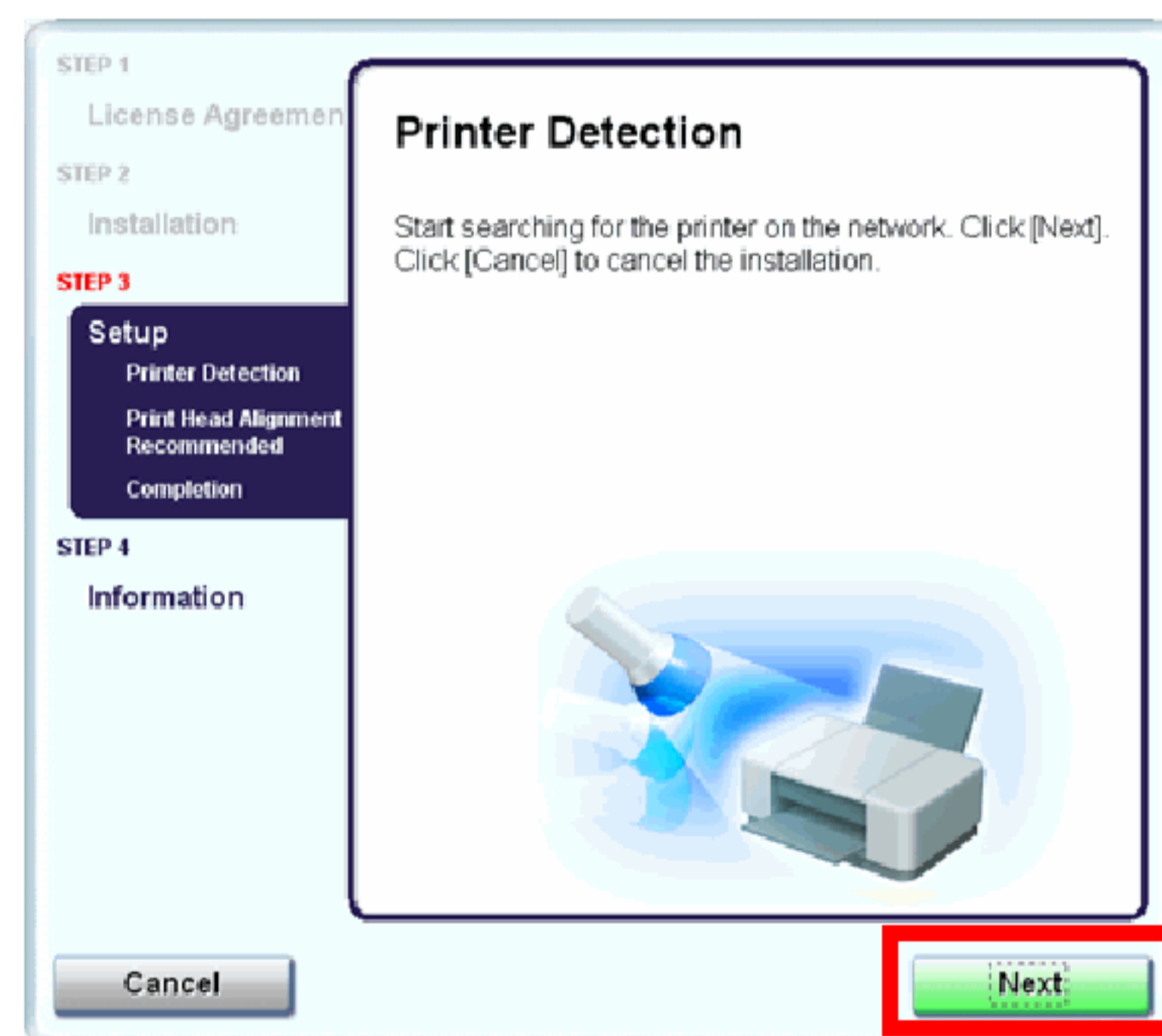
Step 5

Select **Use the printer on network**, then click **Next**.



Step 6

When the Printer Detection screen appears, click **Next**.



▶ IMPORTANT

IF THE PRINTER CONNECTION SCREEN APPEARS INSTEAD OF THE SCREEN ABOVE, THE CONNECTION METHOD IS NOT CORRECTLY SELECTED IN 5.

CLICK CANCEL AND START AGAIN FROM STEP 1, THEN BE SURE TO SELECT USE THE PRINTER ON NETWORK IN 5.

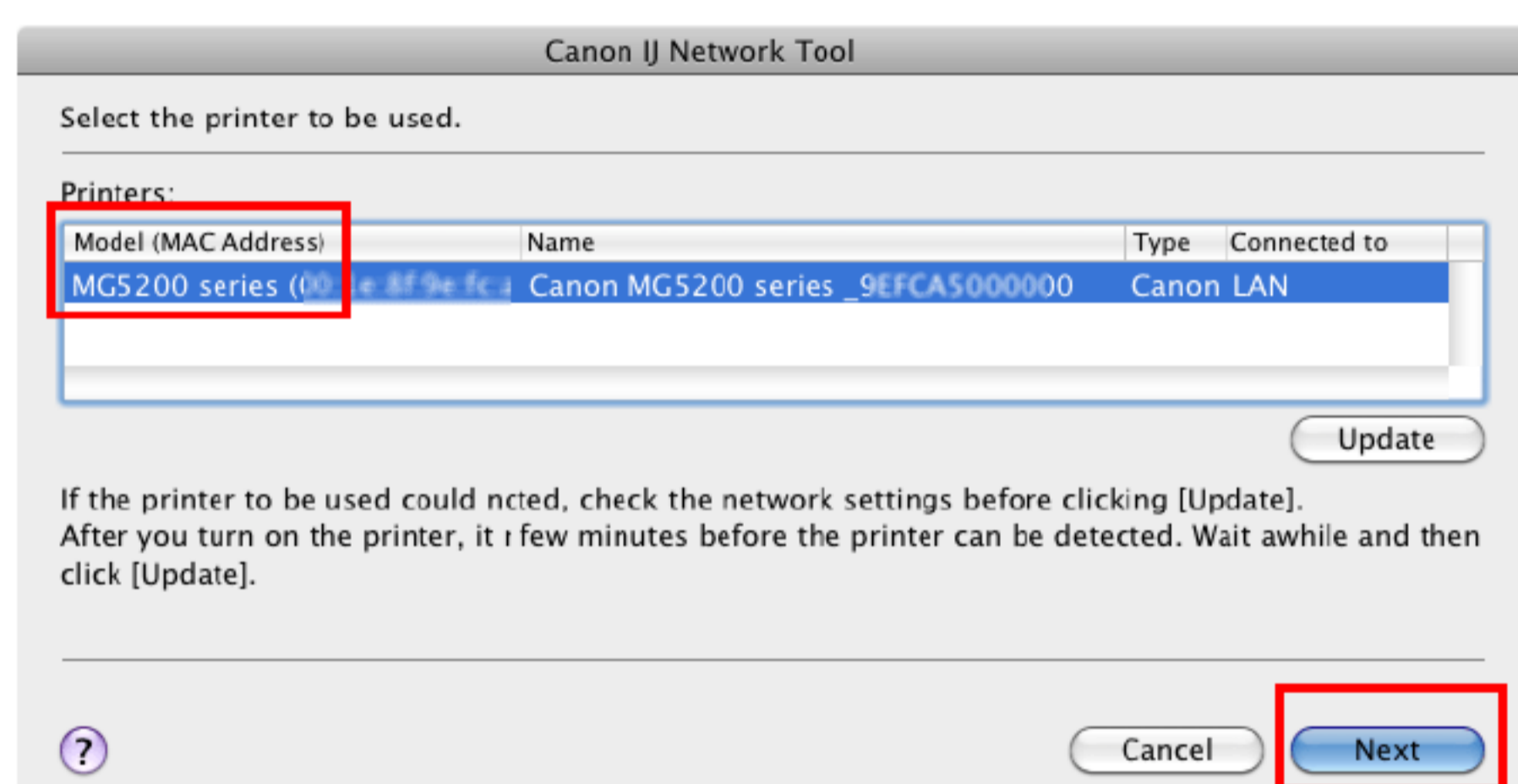
Installing The MG5220 Software

[<< Previous](#)

[Next >>](#)

Step 7

On the **Canon IJ Network Tool** screen, select **MG5200 series** in Printers, then click **Next**.



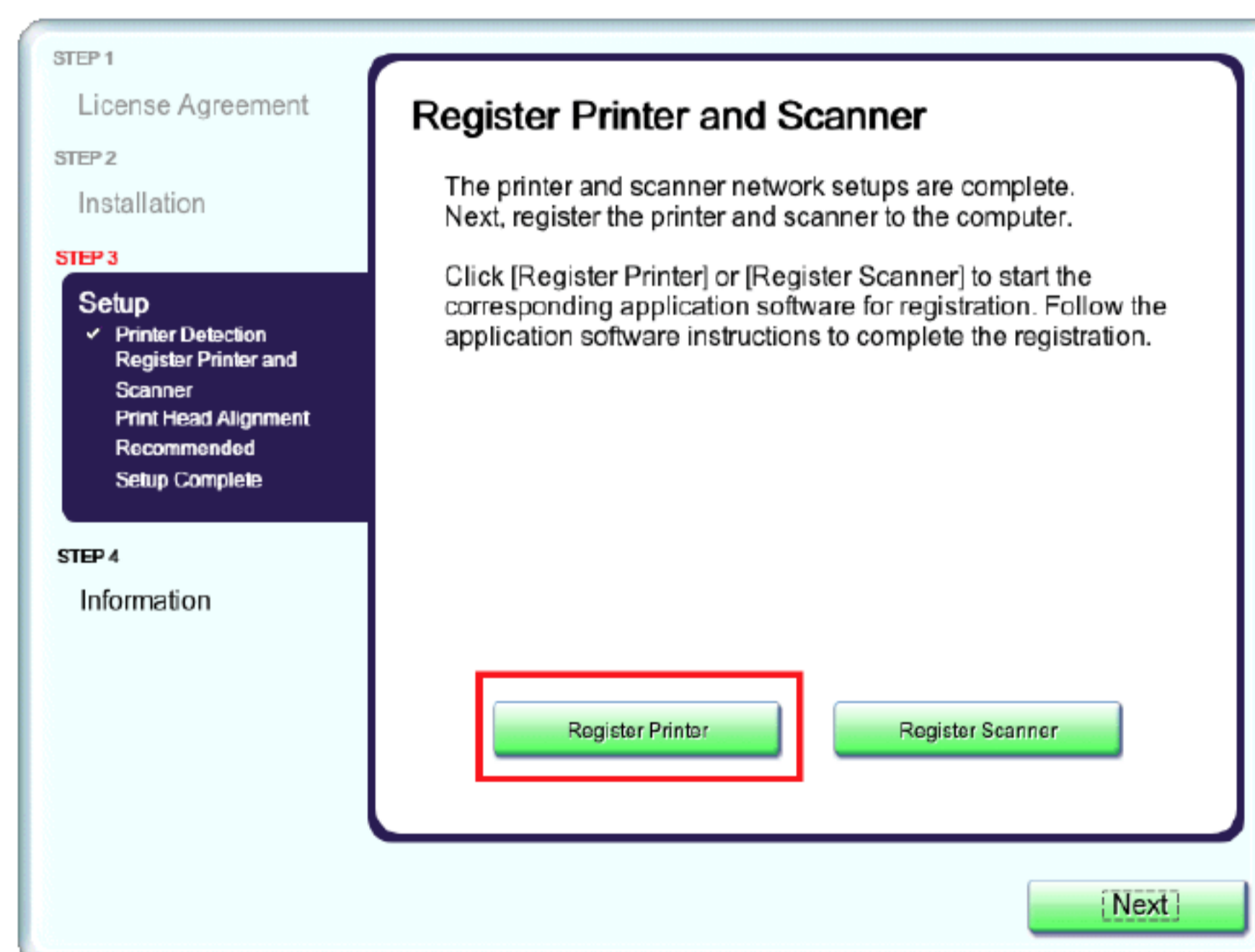
Note:

The alphanumeric characters after **Canon MG5200 series** is the machine's Bonjour service name or MAC address.

If the machine is not detected, refer to the printed manual: *Network Setup Troubleshooting*. Make sure there is no problem, then click **Update**

Step 8

When the **Register Printer and Scanner** screen appears, click **Register Printer**.



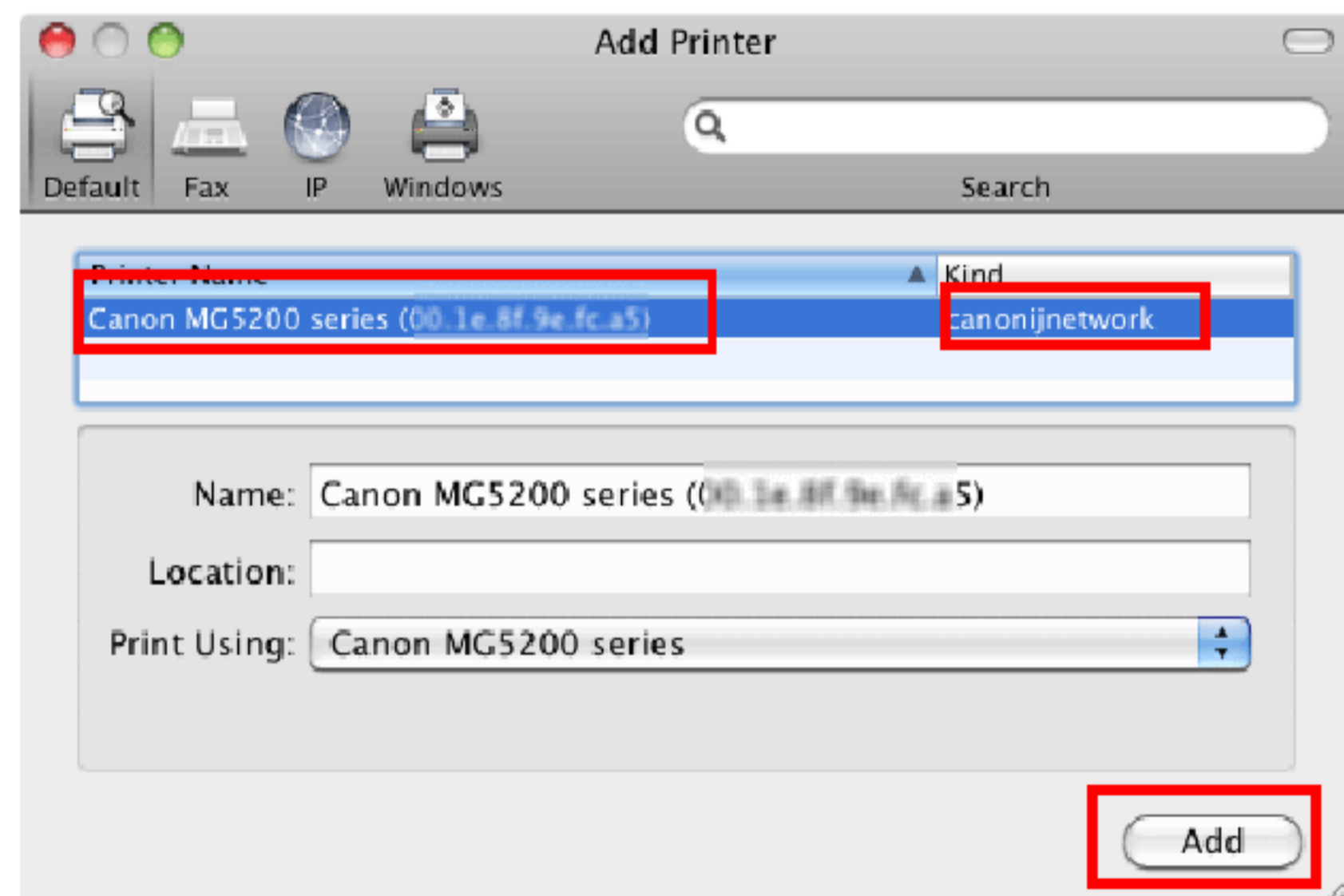
Step 9

For OS X v. 10.6.x and 10.5.x only

Select Canon MG5200 series
canonijnetwork and click Add.

Go to Step 11.

Note: It may take a minute or two before the printer appears in the list



Step 10

For OS X v. 10.4.11 only

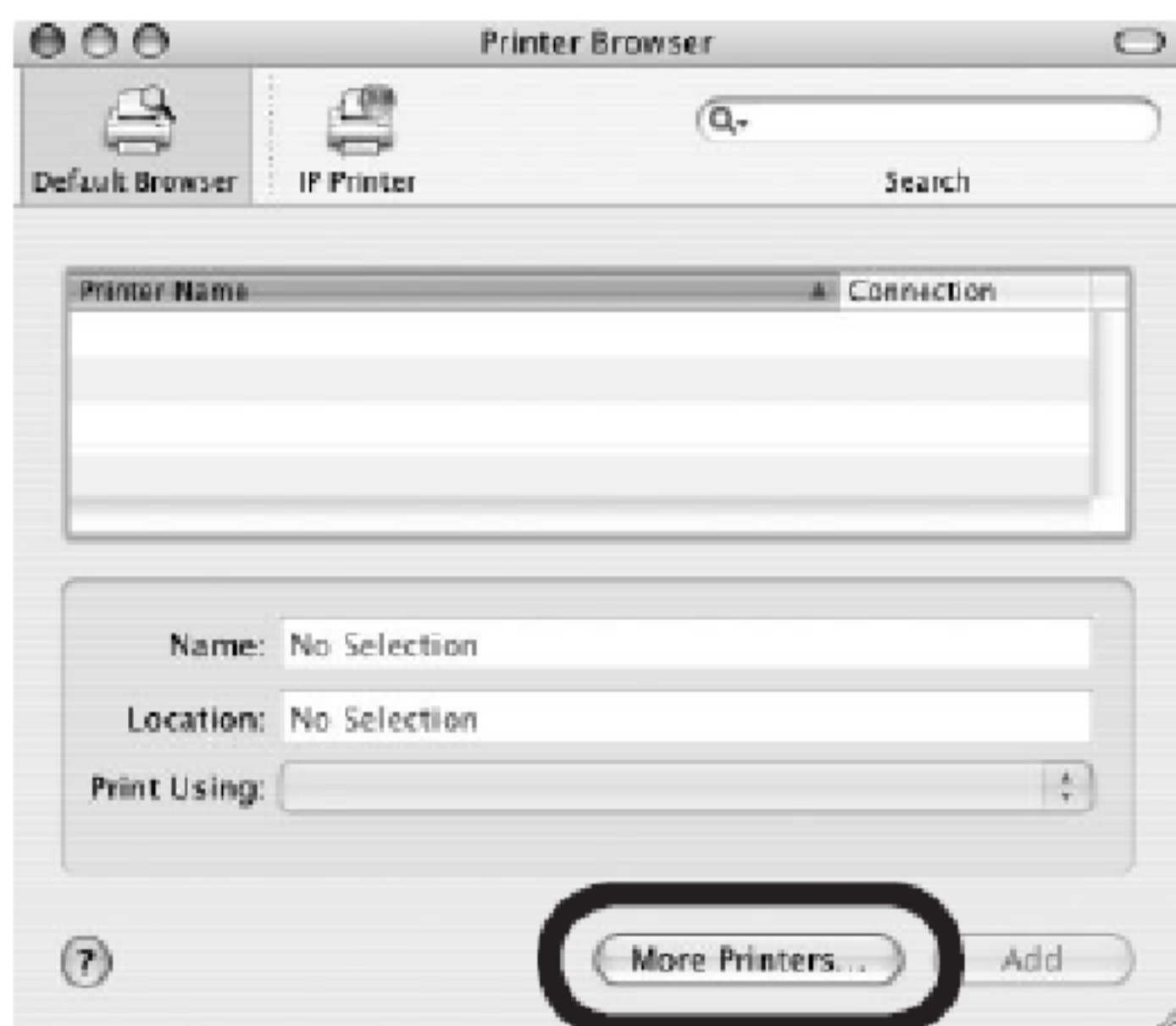
1. When the Printer List window appears, click **Add**.



Note: When the "You have no printers available". screen appears, click **Add**.

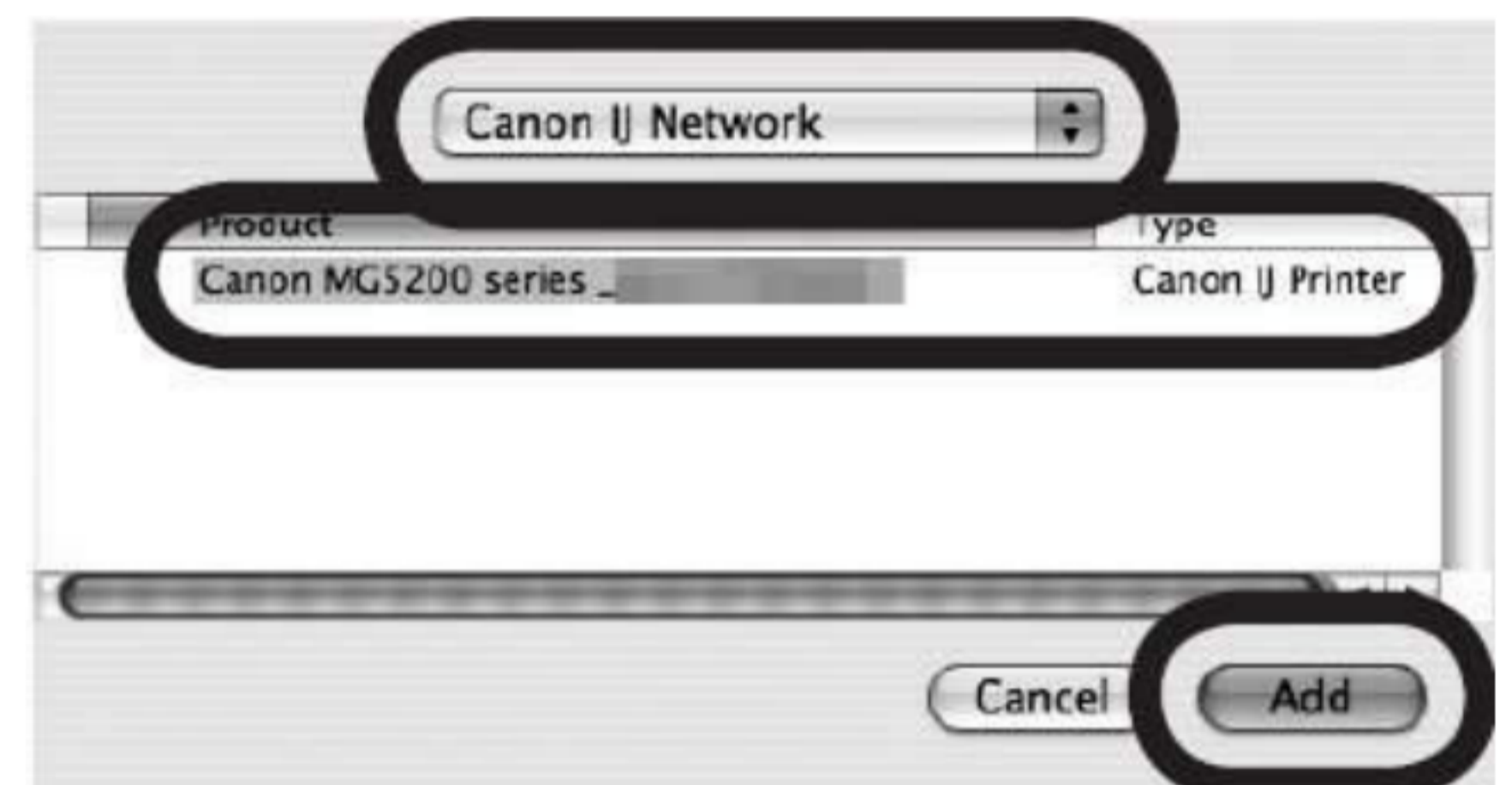
Step 10 (continued)

2. Click **More Printers** in the Printer Browser window.



Step 10 (continued)

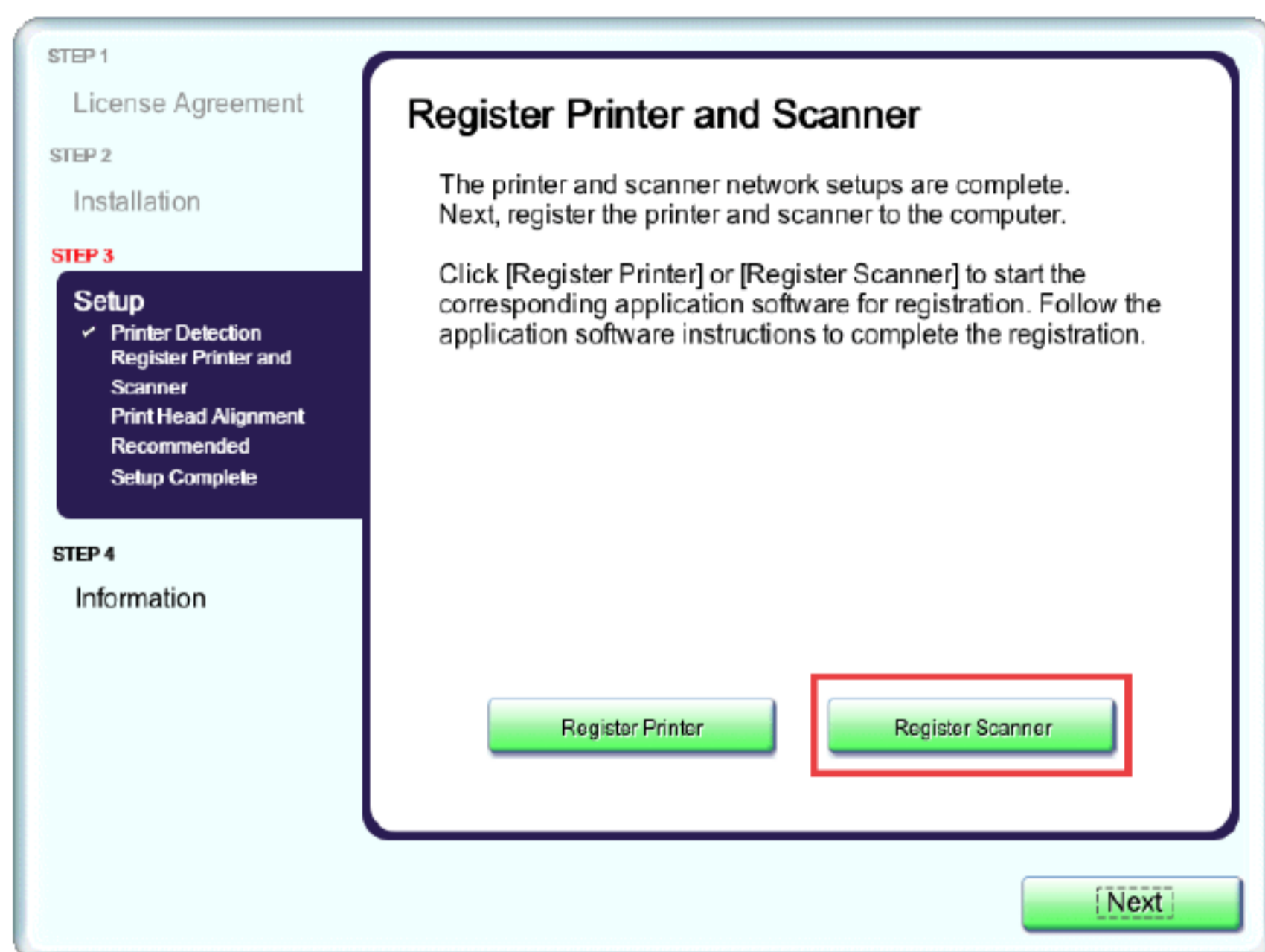
3. Click **More Printers** in the Printer Browser window.



4. Make sure that Canon MG5200 series is added to the list of printers.

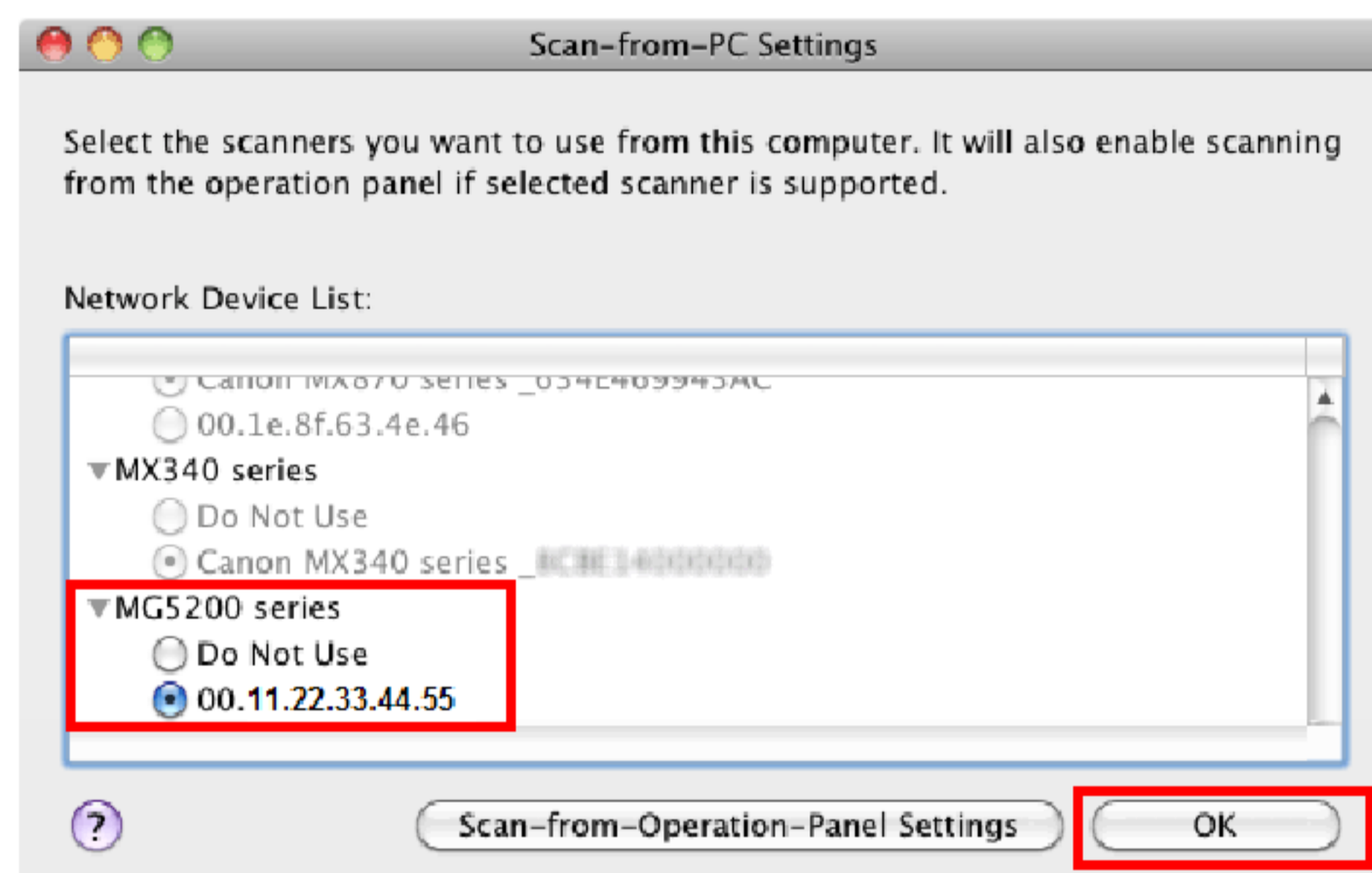
Step 11

When the Register Printer and Scanner screen appears, click **Register Scanner**.



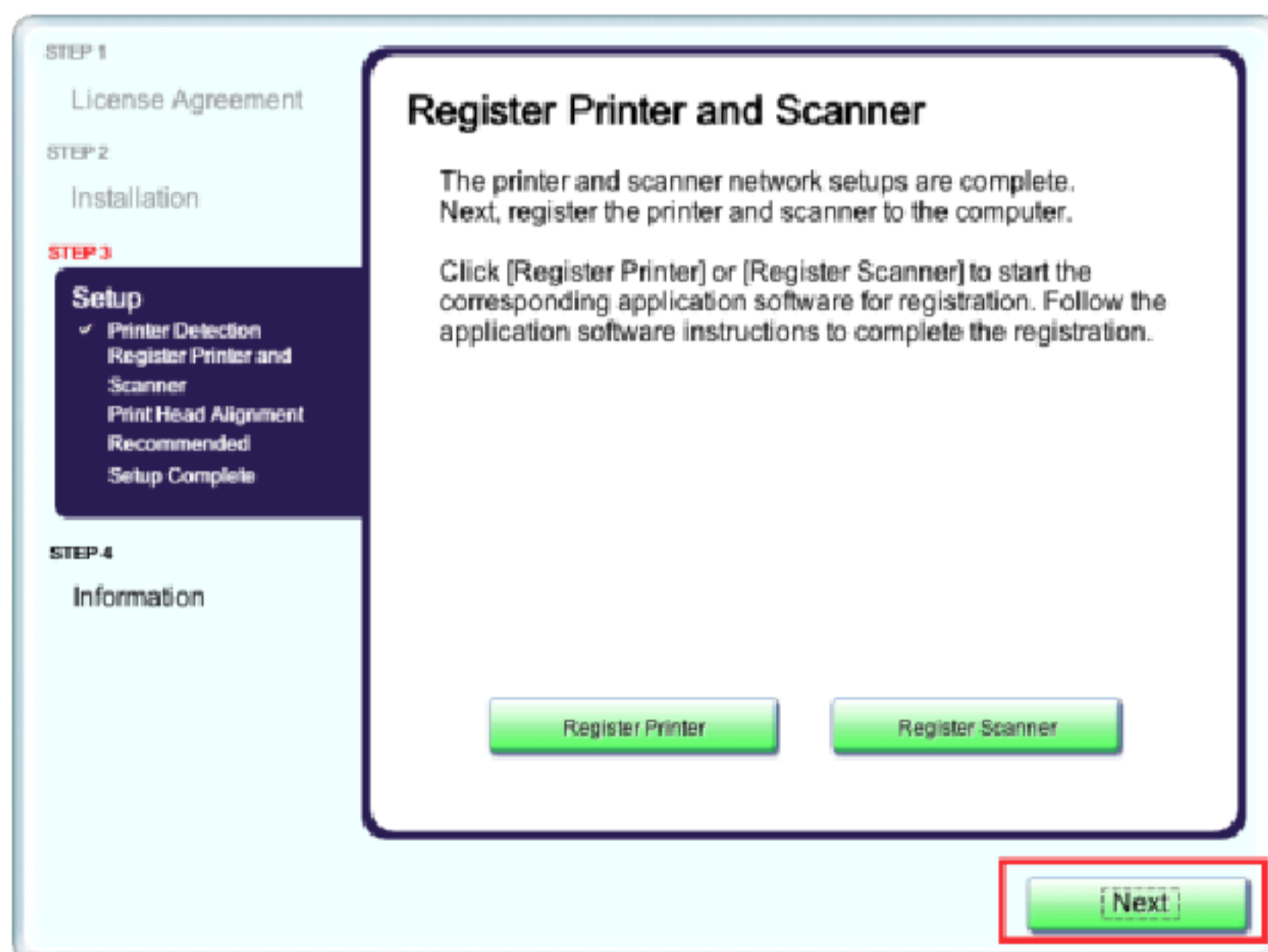
Step 12

Select **MG5200 series** on the Scan-from-Operation-Panel Settings screen, then click **OK**.



Step 13

Click **Next** on the Register Printer and Scanner screen.



Wireless setup is now complete

Step 14

Follow any on-screen instructions to proceed with the remaining software installation.