



Unpack the Machine

- Please confirm the included items against the illustration printed on the lid of the packing box.
- A USB cable is necessary to connect the machine with your computer.

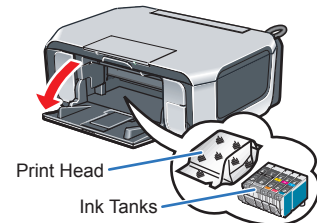
Important

When cleaning the exterior of the machine, use a soft cloth to wipe it gently. For details, refer to "Cleaning Your Machine" in the Quick Start Guide.

# 1 Prepare the Machine

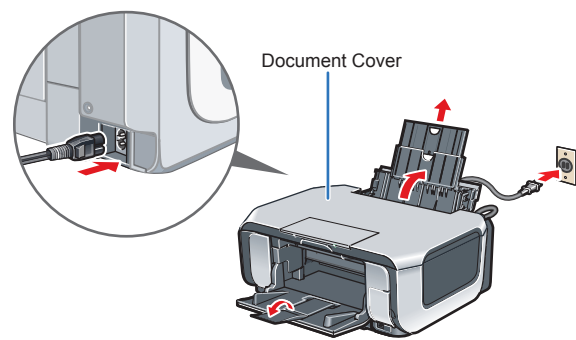
1 Open the Paper Output Tray with your hands, and take out the Print Head and ink tanks.

**Caution**  
Before turning on the machine, remove all the orange shipping tapes.



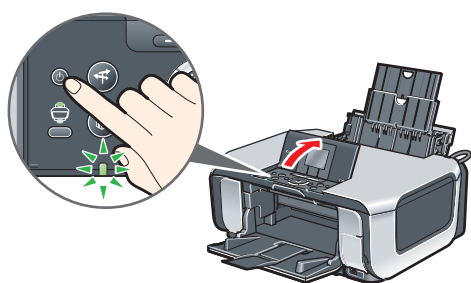
**Important**  
The Print Head and ink tanks are placed inside of the Paper Output Tray.

2 Plug the power cord in the back of the machine and connect the other end to the wall outlet. Next, open the Sheet Feeder Cover, pull out the Paper Support, then open the Output Tray Extension.



**Important**  
Make sure that the Document Cover is closed.

3 Open the Operation Panel, then press the ON/OFF button to turn on the machine.



4 Use the ▲ or ▼ button on the Operation Panel to select the language for the LCD, then press the OK button.



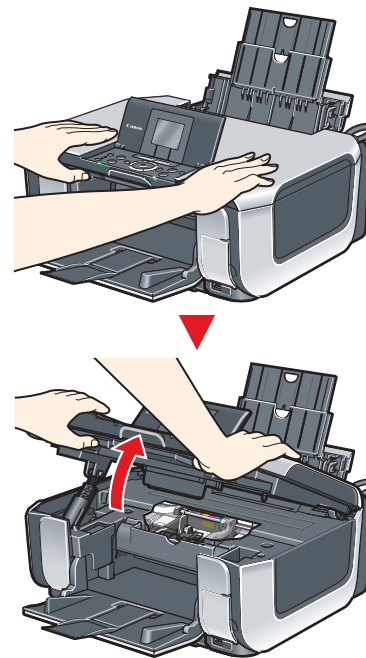
(1) Press the ▲ or ▼ button to select the language.

(2) Press the OK button.

**Important**  
If an unintended language is displayed on the LCD, press the Back button to return to the Language selection screen.

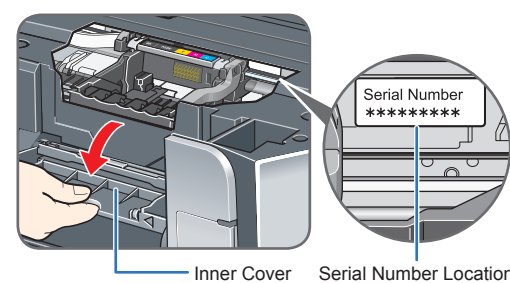
Once the message "Install the print head and set the ink tank." appears, go to 5.

5 Lift the Scanning Unit (Printer Cover) until it locks into place. The Print Head Holder moves to the center.



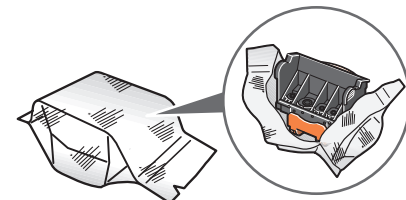
**Important**  
• For your safety, always firmly grip the areas illustrated when lifting the Scanning Unit (Printer Cover).  
• Lift the Document Cover and Scanning Unit (Printer Cover) together.

6 Open the Inner Cover. Write down the serial number located inside the machine. You will need this to register your product.



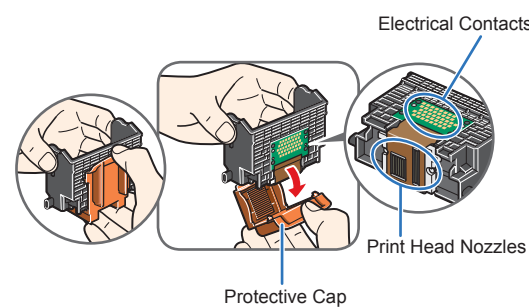
# 2 Install the Print Head

1 Remove the Print Head from its package.



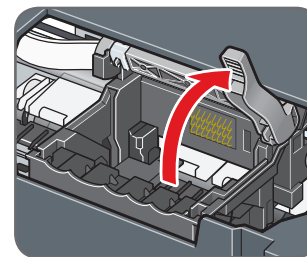
**Caution**  
There may be some transparent or light blue ink on the inside of the bag the print head comes in, or the inside of the protective cap - this has no effect on print quality. Be careful not to get ink on yourself when handling these items.

2 Remove the orange protective cap from the Print Head and discard it.

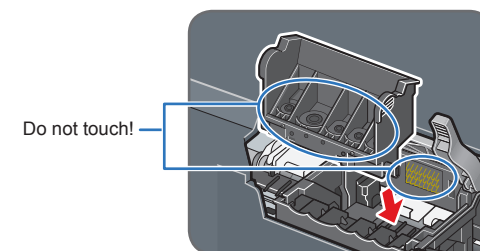


**Note**  
Do not touch the print head nozzles or the electrical contacts.

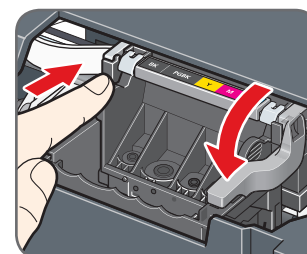
3 Firmly raise the Print Head Lock Lever until it stops. The Print Head Lock Lever may feel heavy.



4 Insert the Print Head.



5 Push the Print Head to hold it in place, and lower the Print Head Lock Lever.

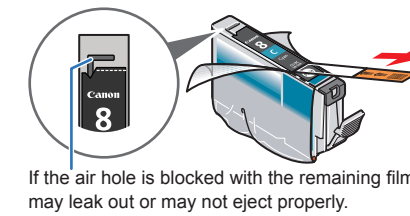


**Important**  
If the Scanning Unit (Printer Cover) is left open for more than 10 minutes, the Print Head Holder moves to the right. Close and reopen the Scanning Unit (Printer Cover) to return the Holder to the center.

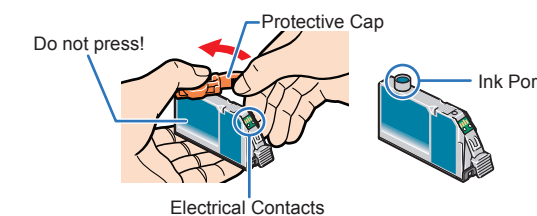
# 3 Install the Ink Tanks

**Note**  
For the ink tanks compatible with this machine, refer to the back cover of the Quick Start Guide.

1 Pull the orange tape in the direction of the arrow to peel off the protective film and remove the film completely.

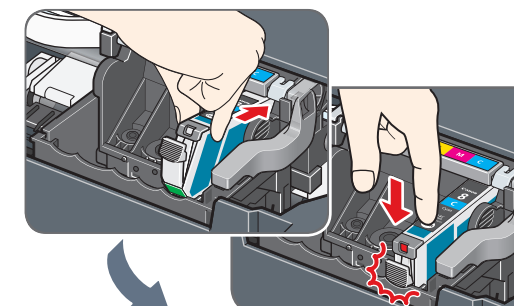


2 Twist off and discard the orange protective cap located on the bottom of the ink tank.

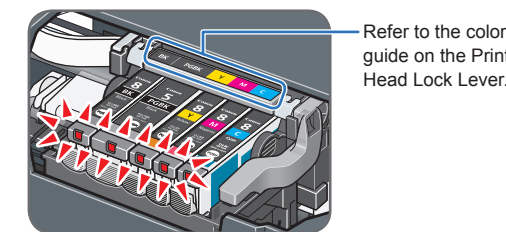


**Important**  
• Do not touch the electrical contacts.  
• Do not touch the ink port.

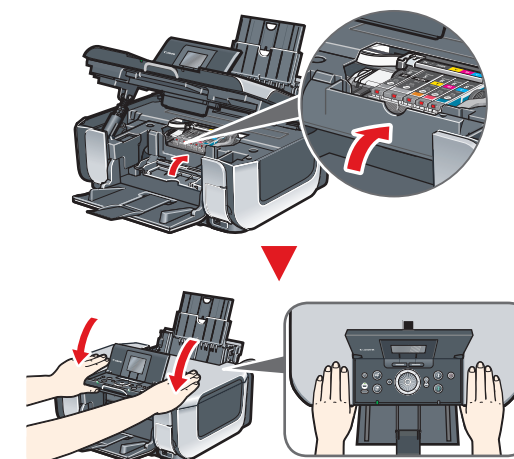
3 Insert the ink tank into the right-hand slot and press the mark on the ink tank until it clicks into place.



4 Make sure the ink lamp lights red.



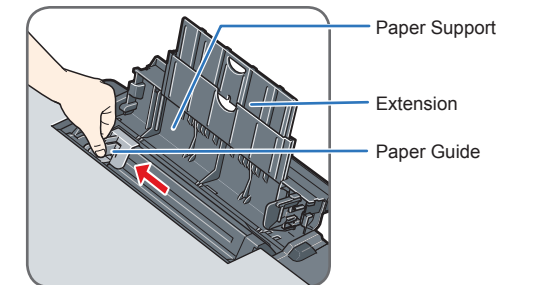
5 Close the Inner Cover and the Scanning Unit (Printer Cover).



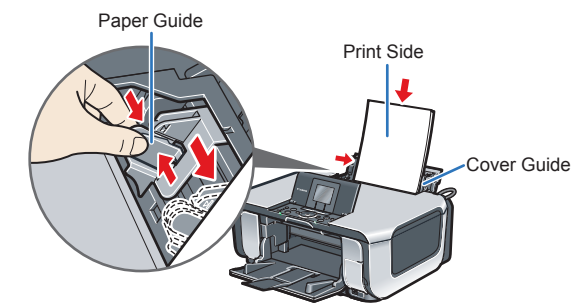
**Important**  
• For your safety, always firmly grip the areas illustrated when closing the Scanning Unit (Printer Cover).  
• The machine starts the preparatory operation. It takes about 2 minutes. Do not start another operation until the machine has stopped making operating noises.

# 4 Align the Print Head

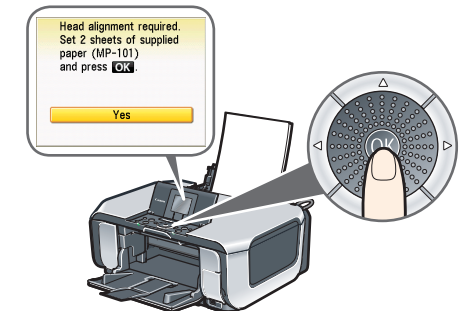
1 Pinch the Paper Guide and slide it to the left end.



2 Load two sheets of supplied paper (MP-101) into the Rear Tray with the printing side (whiter side) facing up, align the paper with the Cover Guide on the right side, then slide the Paper Guide against the paper stack.

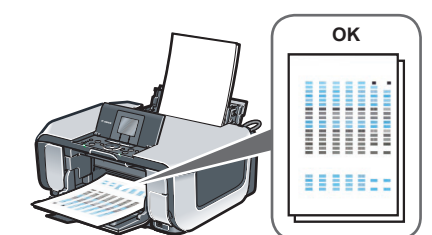


3 Make sure that **Yes** is selected in the message requesting head alignment, then press the OK button.



**Note**  
Print Head alignment takes about 13 minutes to complete. Do not start another operation until the machine has stopped making operating noises.

The pattern is printed. And Print Head is aligned automatically.



**Note**  
• The pattern is printed in black and blue.  
• When Automatic Print Head Alignment cannot be executed correctly, the message "Auto head align has failed." is displayed on the LCD. Refer to "An Error Message is Displayed on the LCD" in the Quick Start Guide.

Hardware setup and Print Head alignment are complete.



## Windows® Software Installation

Windows

**Note**

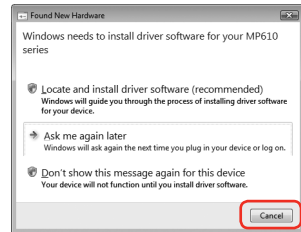
- The screens below refer to Windows Vista™ operating system Ultimate Edition (hereafter referred to as "Windows Vista") installation. Screens may vary depending on the operating system you are using.
- Log into a user account with the administrator privilege.
- Before installing the driver, disable all anti-virus programs and automatically loading programs.
- A message asking for your confirmation to restart your computer may appear during the installation process. If this message is displayed, follow the on-screen instructions and click **OK**. The installation resumes from where it left off when your computer has been restarted.
- If the computer is restarted during installation, do not remove the *Setup CD-ROM* during restarting.

- Be sure to **TURN THE MACHINE OFF** before continuing.
  - Press the **ON/OFF** button.
  - Make sure that the **Power** lamp stops flashing.

- Turn the computer on and start Windows.

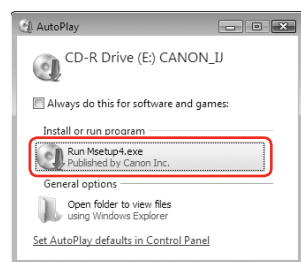
**Important**

If the **Found New Hardware** or **Found New Hardware Wizard** screen appears automatically, remove the USB cable connected to your computer. Click **Cancel** to quit the screen. In Windows Vista, the screen may close automatically when the USB cable is unplugged. Then turn off the machine and proceed from step 3 to install the MP Drivers.

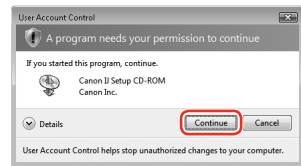


- Insert the *Setup CD-ROM*. The setup program should run automatically. In Windows Vista, go to Step 4. In Windows XP and Windows 2000, go to Step 6.

- If the **AutoPlay** screen appears, click **Run Msetup4.exe**.



- If the **User Account Control** screen appears, click **Continue**. If the same screen reappears in subsequent steps, click **Continue**.



- When the main menu appears, click **Easy Install**. The MP Drivers, On-screen Manuals, and application software are installed automatically.



**Note**

If you want to select particular items to install, click **Custom Install** and follow the on-screen instructions to proceed the installation.

- When the list of applications to install appears, confirm the contents and click **Install**.

**Note**

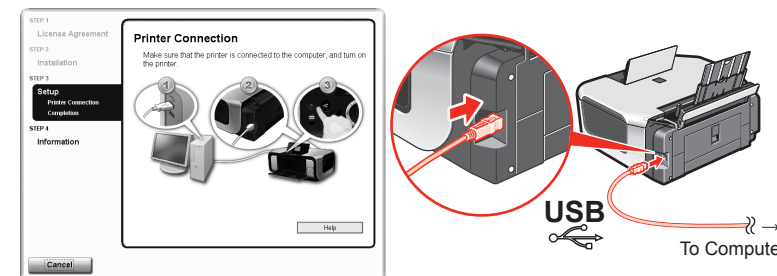
Move the cursor over items to display explanations of each application.

- Read the License Agreement carefully and click **Yes**. The software installation screen may appear during the installation process. Follow the on-screen instructions to install the software.

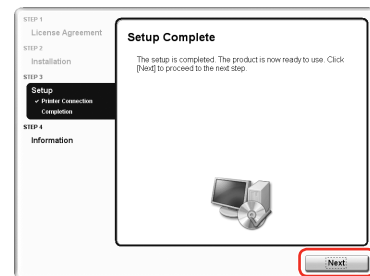
- When the **Printer Connection** screen appears, connect one end of the USB cable to the computer, the other to the machine, then **TURN THE MACHINE ON**. The software will begin identifying the printer port being used.

**Important**

If you cannot go to the next procedure after three minutes, refer to "Troubleshooting" instructions in the *Quick Start Guide*.



- When the **Setup Complete** screen appears, click **Next**.



- When the **User Registration** screen appears, click **Next**.

**Note**

To register later, click **Cancel** and go to Step 12. After software installation is complete, double-click on the desktop.

Follow the on-screen instructions to register your product. You will need your product serial number, which is located on the inside of the machine. See Step 1-6 on the front page.

- When the **PIXMA Extended Survey Program** screen appears, confirm the message. We would appreciate it if you would take part in this program regarding the use of Canon printers. If you can agree, click **Agree**.

- When the **Installation completed successfully** screen appears, click **Exit**.

After clicking **Exit**, remove the CD-ROM.

If **Restart** is displayed, make sure that the **Restart the system now (recommended)** check box is selected, then click **Restart**.

Remove the CD-ROM after clicking **Restart** and restarting the computer.

**Note**

Keep the CD-ROM in a safe place in case you need to reinstall the software.

**Software installation is now complete.**

## Macintosh® Software Installation

Macintosh

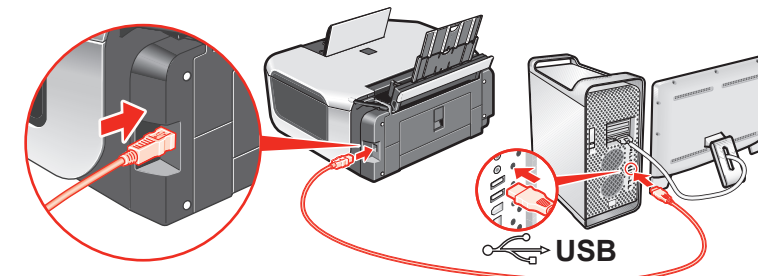
**Note**

- Since Mac OS 9, Mac OS X Classic environments, or Mac OS X v.10.2.7 or earlier are not supported, do not connect the machine to these.
- The screens below refer to Mac OS X v.10.4.x installation. Screens may vary depending on the operating system you are using.
- Log on as an Administrator.
- Before installing the driver, disable all anti-virus programs and automatically loading programs.

- Connect one end of the USB cable to the computer, the other to the machine.

**Note**

Make sure the machine is turned on.



- Turn on your Mac and insert the *Setup CD-ROM*.

**Note**

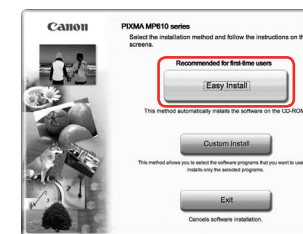
If the CD-ROM folder does not open automatically, double-click the CD-ROM icon on the desktop.

- Double-click the **Setup** icon.

- When the **Authenticate** screen appears, enter your administrator name and password. Click **OK**. If you do not know your administrator name or password, click , then follow the on-screen instructions.

- When the main menu appears, click **Easy Install**.

The MP Drivers, On-screen Manuals, and application software are installed automatically.



**Note**

If you want to select particular items to install, click **Custom Install** and follow the on-screen instructions to proceed the installation.

- When the list of applications to install appears, confirm the contents, then click **Install**.

**Note**

Move the cursor over items to display explanations of each application.

- Read the License Agreement carefully and click **Yes**. The software installation screen may appear during the installation process. Follow the on-screen instructions to install the software.

- When the **Setup Complete** screen appears, click **Next**.

- When the **User Registration** screen appears, click **Next**.

**Note**

To register later, click **Cancel** and go to Step 10. After software installation is complete, double-click on the desktop.

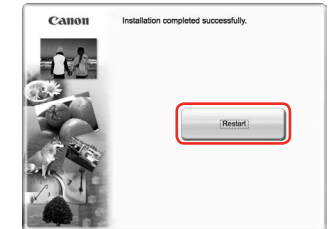
Follow the on-screen instructions to register your product. You will need your product serial number, which is located on the inside of the machine. See Step 1-6 on the front page.

- When the **Installation completed successfully** screen appears, click **Restart**.

Remove the CD-ROM after clicking **Restart** and restarting the computer.

**Note**

Keep the CD-ROM in a safe place in case you need to reinstall the software.



The system is restarted automatically.

**When using Mac OS X v.10.2.8 to v.10.3.3:**

Restarting the computer while connected to the machine may cause the machine not to be detected. To resolve this, either unplug the USB cable then plug it back in again, or turn the machine off then back on again.

**Note**

- When using Mac OS X v.10.2.8 to v.10.3.x, before using the Operation Panel on the machine to save originals scanned from the Platen Glass to the computer, it is necessary to select **MP Navigator EX** as the launch application on **Image Capture** under **Applications**. For details, refer to "Scanning Images" in the *User's Guide* on-screen manual.

**Software installation is now complete.**