

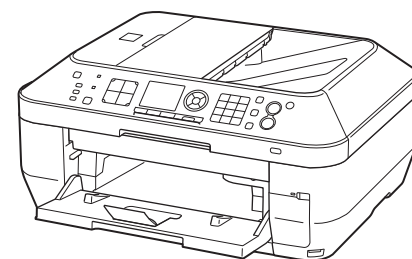


Office All-In-One

PIXMA MX870 series

Getting Started

Read Me First



Make sure to read this manual before using the machine. Please keep it in hand for future reference.



■ Symbols Used in This Document



Prohibited actions.



Instructions including important information.



Informational notes.



Operations that take some time to complete.



Indicates operations in Windows.



Indicates operations in Macintosh.

In this guide, Windows 7 operating system is referred to as Windows 7 and Windows Vista operating system as Windows Vista.

- Microsoft is a registered trademark of Microsoft Corporation.
- Windows is a trademark or registered trademark of Microsoft Corporation in the U.S. and/or other countries.
- Windows Vista is a trademark or registered trademark of Microsoft Corporation in the U.S. and/or other countries.
- Internet Explorer is a trademark or registered trademark of Microsoft Corporation in the U.S. and/or other countries.
- Macintosh, Mac, and AirPort are trademarks of Apple Inc., registered in the U.S. and other countries.
- Bonjour is a trademark of Apple Inc., registered in the U.S. and other countries.

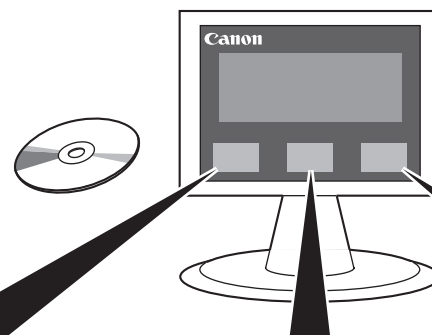
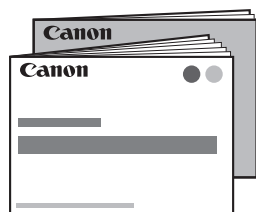
This machine contains both printed manuals and on-screen manuals to be viewed on a computer.
The on-screen manuals are included on the **Setup CD-ROM** and are installed during the software installation.



Printed Manuals



On-Screen Manuals



•**Getting Started**
(this manual)

•**Network Setup**
Troubleshooting

Describes how to set up and use your machine. Introduces the machine and its functions, the included manuals and application software.



Basic Guide

Describes basic operations and media, and gives an introduction to other functions available.



Advanced Guide

Describes various operating procedures to make full use of machine.



Troubleshooting

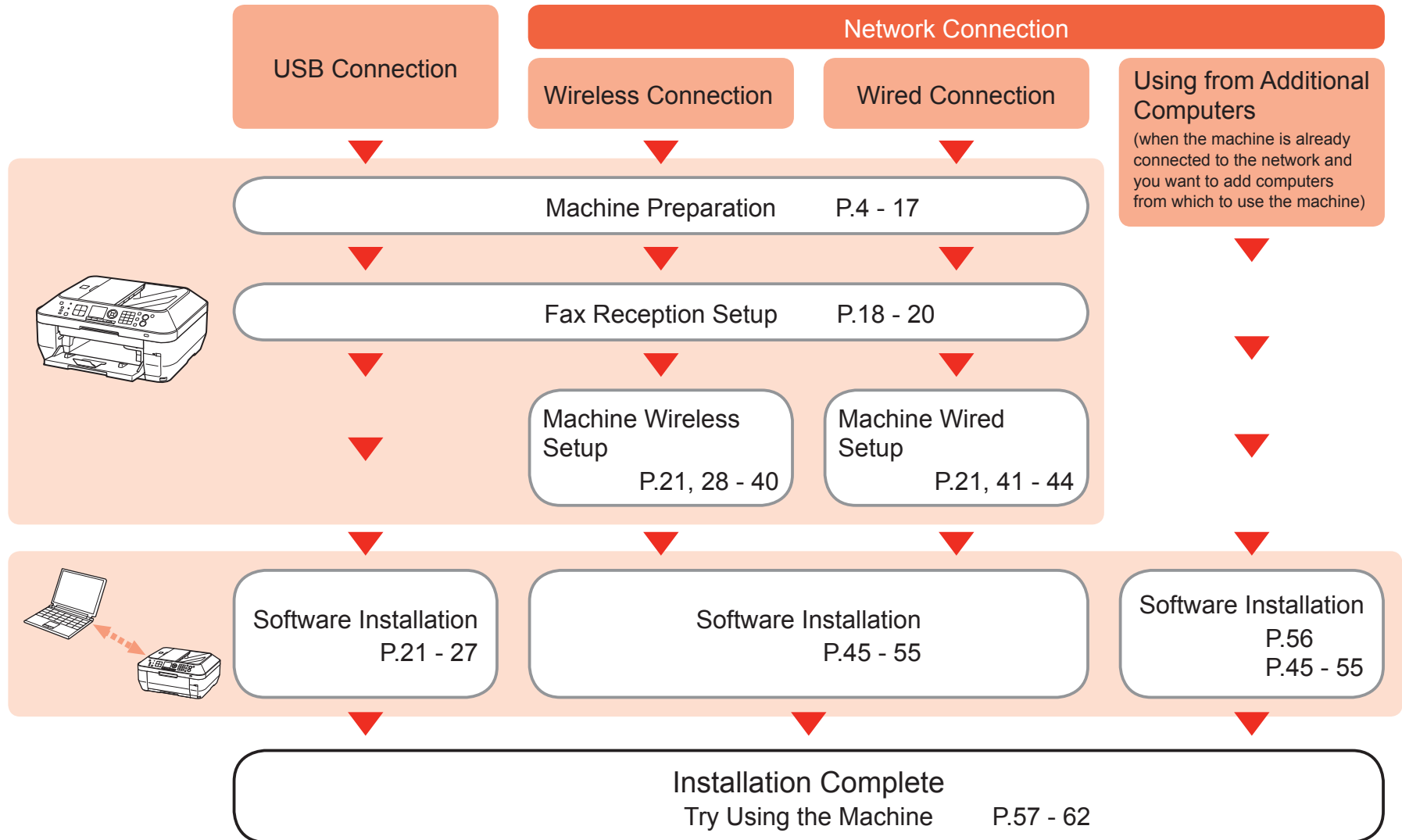
Describes troubleshooting tips for problems you may encounter when using the machine.

For details on opening the on-screen manuals, refer to page 57.

■ Contents

1	Check the Included Items.....	P.5
2	Connect the Telephone Line.....	P.6
3	Turn the Power On	P.7
4	Install the Print Head	P.9
5	Install the Ink Tanks.....	P.12
6	Load Paper.....	P.15
7	Set Up for Fax Reception	P.18
8	Select Connection Method	P.21
9	Install the Software (USB Connection).....	P.22
10	Wireless Setup	P.28
	Wireless Setup Using Easy Setup.....	P.29
	Wireless Setup Using WPS (Wi-Fi Protected Setup)	P.33
	Wireless Setup Using WCN (Windows Connect Now).....	P.36
11	Wired Setup.....	P.41
12	Install the Software (Network Connection).....	P.45
	Install the Software.....	P.45
	Install the Software (Registration)	P.50
	Install the Software (Information)	P.54
13	Use from Additional Computers.....	P.56
14	Try Using the Machine.....	P.57
	Try Copying	P.58
	Print Photos from a Computer	P.60
	Send Faxes	P.61
15	Specifications	P.63

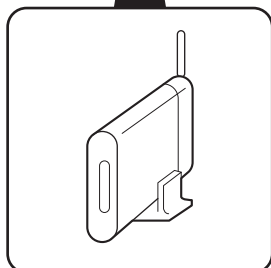
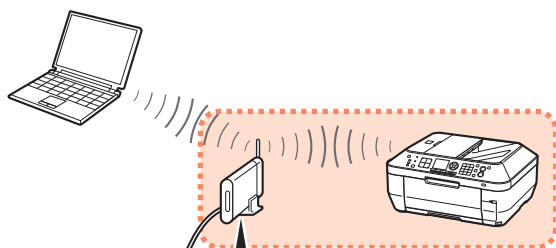
■ Machine Installation Flow



■ Devices Required for Wireless/Wired Connection

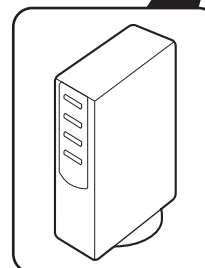
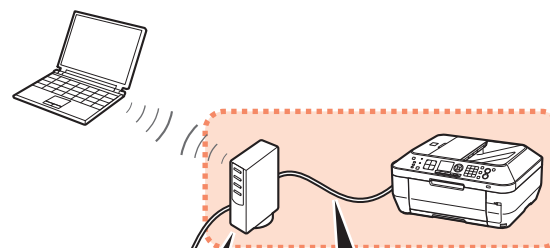
When using the machine over a wireless/wired connection, the following devices are required depending on the connection method.

Wireless Connection

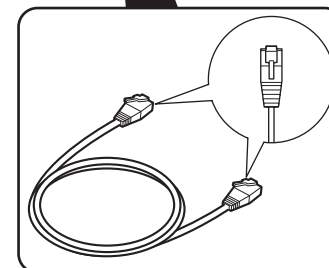


Access point or wireless router

Wired Connection



Router, etc.



Ethernet cable

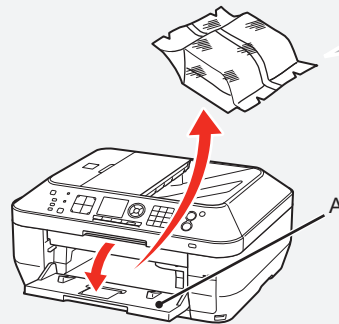
A commercial access point or router that supports IEEE802.11b/g is required.

A commercial network device (router, etc.) and Ethernet cable are required.

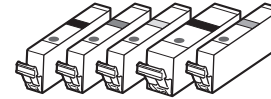
Check the Included Items

□ Preparation

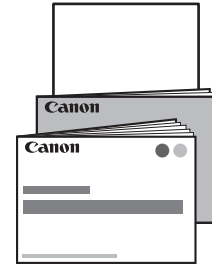
- 1 Remove all orange tape and protective materials from the inside and outside of the machine.
- 2 The Print Head is placed inside of the Paper Output Tray (A). Open the Paper Output Tray and take it out.



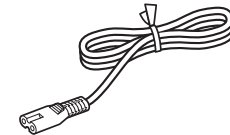
Check that all the items shown below are included in the box.



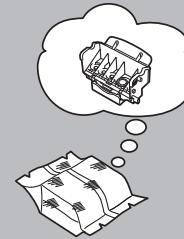
Ink tanks
(5: BK, M, Y, PGBK, C)



Manuals
Other documents



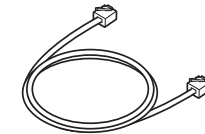
Power cord



Print Head



Setup CD-ROM (containing the
drivers, applications and on-screen
manuals)



Telephone line cable



- A USB cable is necessary to connect the machine with your computer (USB connection only).

2 Connect the Telephone Line

Do not turn the power on yet.

To use the machine as a fax, a telephone line needs to be connected.

This section describes the basic method of telephone line connection.

For other connection methods, refer to the on-screen manual: **Basic Guide**.

When not using as a fax:

➡ Go to "3 Turn the Power On" on page 7.

When using as both a fax and telephone:

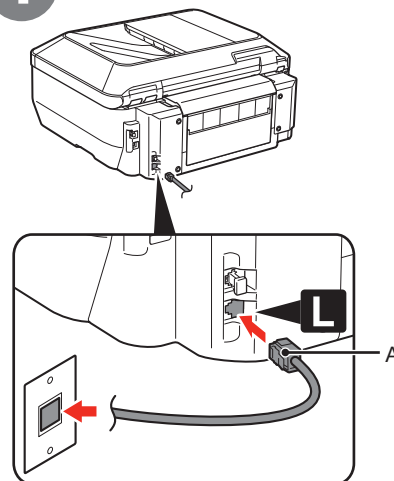
➡ ① ②

When using as a fax only:

➡ ① only

- ▶ If you cannot send faxes after installing the machine, check the telephone line type. For details, refer to "Confirming the Telephone Line Connection" in the on-screen manual: **Basic Guide**.

1



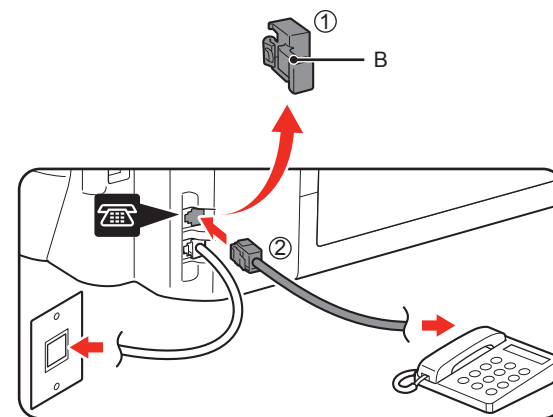
Connect the machine with a telephone line using the supplied telephone line cable (A).

When using as a fax only:

➡ Go to "3 Turn the Power On" on page 7.

2

Only when connecting a telephone:



Remove the Cap (B) (1), then connect a telephone with the telephone line cable (2).

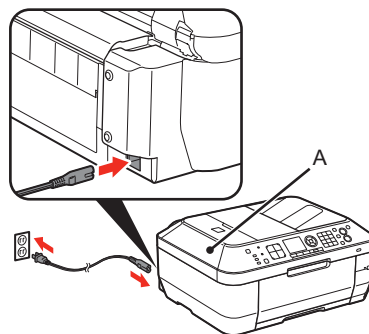
- ▶ Do not connect the machine and a telephone in parallel to the same telephone line using a distribution adapter. The machine may not operate properly.

Turn the Power On



- ▶ Do not install the machine where an object may fall on it. The object may fall inside the machine, resulting in malfunction.
- ▶ Do not place any object on top of the machine. It may fall into the machine when opening covers, resulting in malfunction.

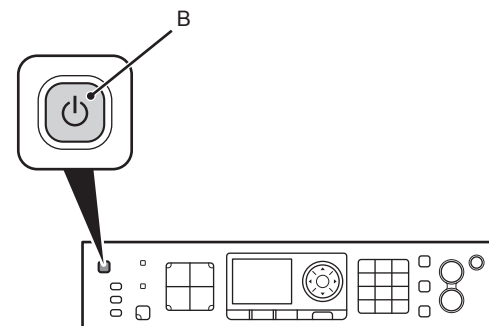
1



Insert the power cord into the connector on the left side at the back of the machine and into the wall outlet.

- ▶ Do NOT connect the USB cable or Ethernet cable at this stage.
- ▶ Make sure that the Document Cover (A) is closed.

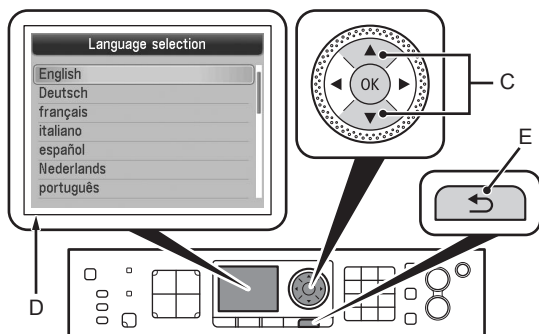
2



Press the **ON** button (B) to turn on the machine.

- 📖 • The machine may make some operating noises. This is normal operation.

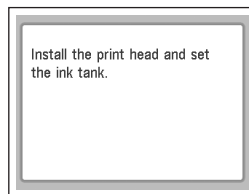
3



Use the ▲ or ▼ button (C) on the Operation Panel to select the language for the LCD (Liquid Crystal Display) (D), then press the **OK** button.

- ▶ If an unintended language is displayed on the LCD, press the **Back** button (E) to return to the **Language selection** screen.

4

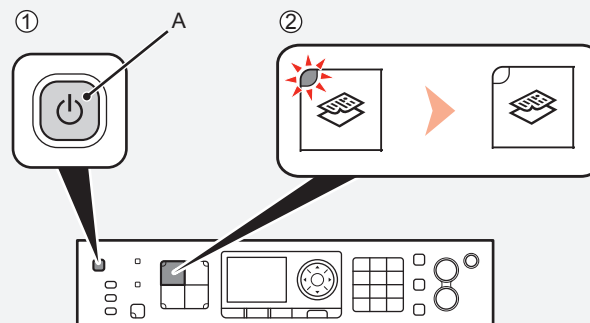


Make sure that the above screen is displayed and go to the next step.

□ Turning the power off

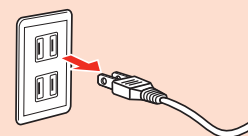
Be sure to follow the procedure below.

1. Press the **ON** button (A) to turn off the machine.
2. Make sure that all the lamps on the Operation Panel are not lit.



Operating noise may continue for up to 30 seconds until the machine turns off.

- ▶ When removing the power plug, make sure that all the lamps on the Operation Panel are not lit before removing the plug. Removing the power plug while all the lamps on the Operation Panel light up or flash may cause drying and clogging of the Print Head, resulting in poor printing.

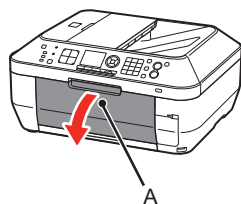


If your machine is used as fax

- Removing the power plug deletes all faxes stored in memory. Send or print faxes as necessary before removing the power plug.

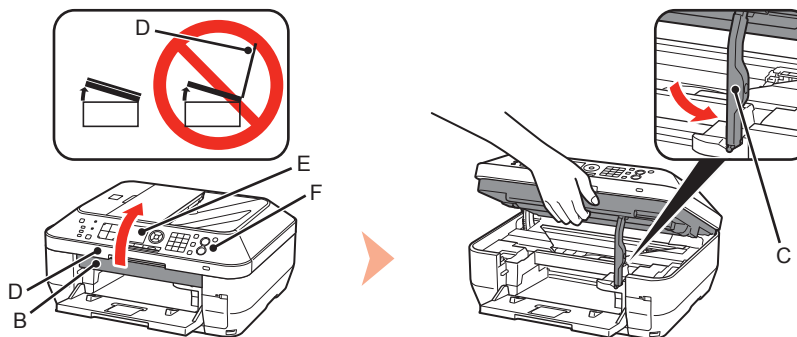
4 Install the Print Head

1



Open the Paper Output Tray (A).

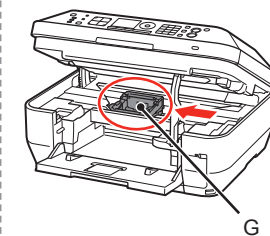
2



Lift the Scanning Unit (Cover) (B) and fix it with the Scanning Unit Support (C).

Close the Document Cover (D) and lift it with the Scanning Unit (Cover).

3



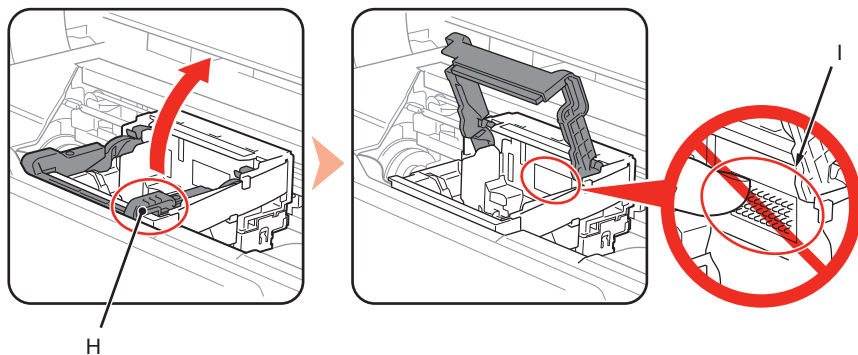
Make sure that the Print Head Holder (G) moves to the installation position.

➡ Go to the next page.



- Do not touch the buttons or LCD (E) on the Operation Panel (F). May result in unintended operation.
- When opening the Scanning Unit (Cover), the Print Head Holder (G) moves automatically.
- The Print Head Holder makes a noise as it moves. This is normal operation.
- If the Print Head Holder does not move, make sure that the machine is turned on.

4



Firmly lift the part (H) of the Print Head Lock Lever in the Print Head Holder until it stops.

The Print Head Lock Lever may feel heavy.

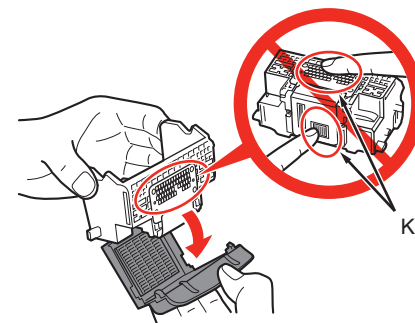
- ▶ Do not touch the inside of the Print Head Holder (I). The machine may not print properly if you touch it.

5



Remove the Print Head from the silver package.

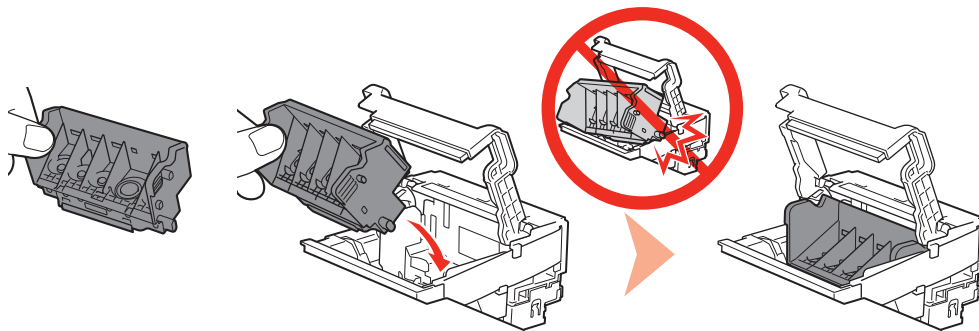
6



Remove the orange protective cap.

- ▶ Handle the Print Head carefully. Do not drop or apply excessive pressure to it.
- ▶ Do not touch the inside (J) or metal parts (K) of the Print Head. The machine may not print properly if you touch them.
- ▶ There may be some transparent or light blue ink on the inside of the bag the Print Head comes in, or the inside of the protective cap - this has no effect on print quality. Be careful not to get ink on yourself when handling these items.

7

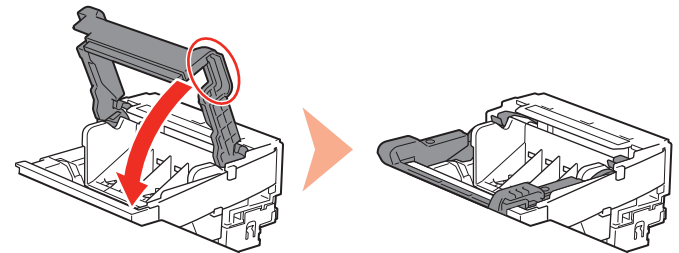


Tilt the Print Head forward and set it in place as shown.



- Do not knock the Print Head against the sides of the holder.
- Install in a well-lit environment.

8

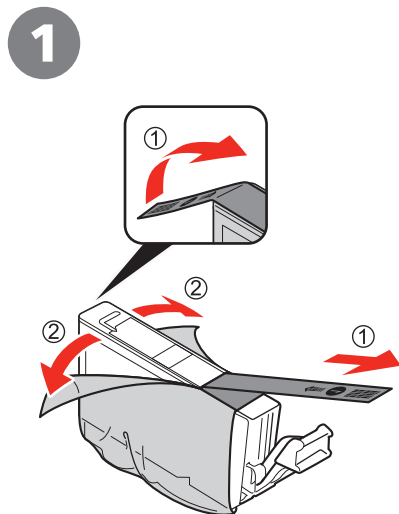


Hold the Print Head Lock Lever firmly and lower it completely.



- Once you have installed the Print Head, do not remove it unnecessarily.
- If the Scanning Unit (Cover) is left open for more than 10 minutes, the Print Head Holder moves to the right. In this case, close and reopen the Scanning Unit (Cover).

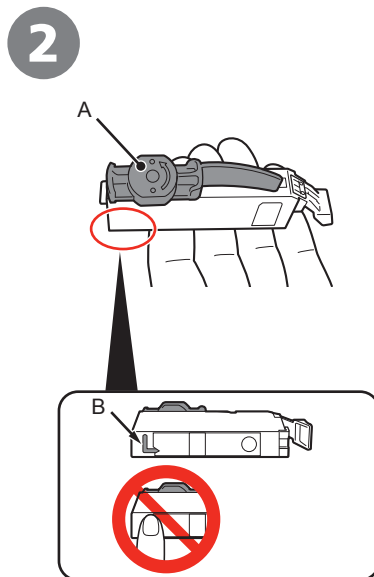
5 Install the Ink Tanks



1. Remove the orange tape completely.

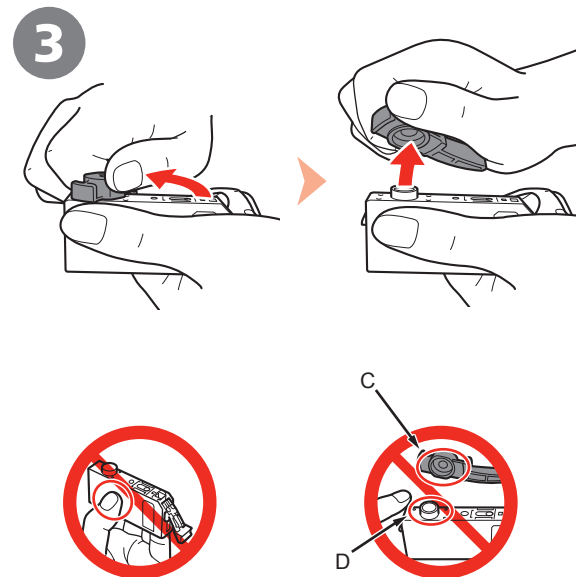
2. Remove the protective film completely.

- ▶ Handle the ink tanks carefully. Do not drop or apply excessive pressure to them.
- ▶ Be sure to use the supplied ink tanks.



Hold the ink tank with the orange protective cap (A) pointing up while being careful not to block the L-shape air hole (B).

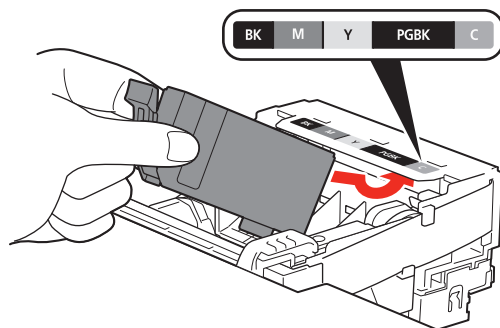
- ▶ If the orange tape remains on the L-shape air hole, ink may splash or the machine may not print properly.
- ▶ If you push the sides of the ink tank with the L-shape air hole blocked, ink may splash.
- ▶ Do not touch the inside (C) of the orange protective cap or the open ink port (D). The ink may stain your hands if you touch them.



Slowly twist the orange protective cap 90 degrees horizontally to remove it off.

Do not push the sides of the ink tank.

4



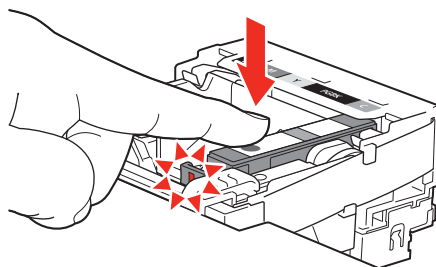
Tilt the ink tank, then insert it under the label and against the back end of the slot.

Make sure that the color of the label matches the ink tank.



- Install in a well-lit environment.

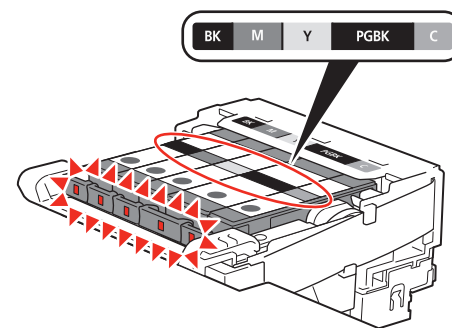
5



Press the **PUSH** mark on the ink tank firmly until it clicks.

When the installation is completed properly, the **Ink** lamp lights red.

6



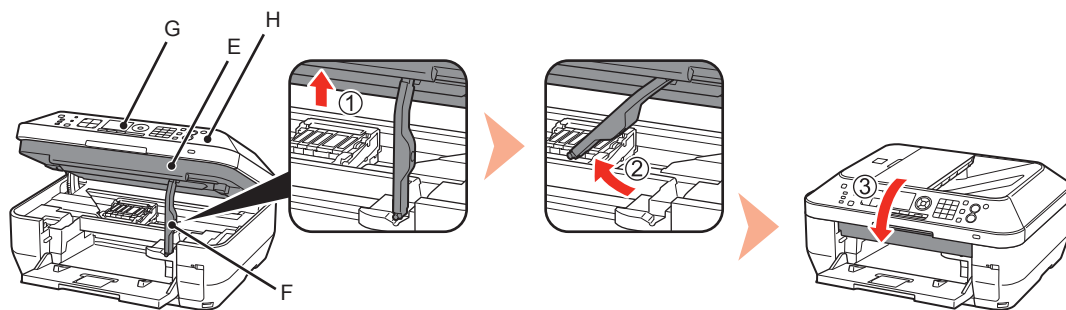
Install all the other ink tanks in the same way according to the color order indicated on the label.

Make sure all the **Ink** lamps light red.



- Once you have installed the ink tanks, do not remove them unnecessarily.

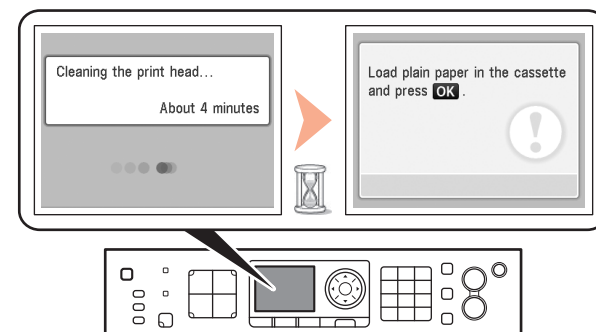
7



1. Lift the Scanning Unit (Cover) (E) slightly.
2. Fold the Scanning Unit Support (F) towards the left.
3. Close the Scanning Unit (Cover).

▶ Do not touch the buttons or LCD (G) on the Operation Panel (H). May result in unintended operation.

8



Make sure that the LCD changes as shown in the illustration and go to the next step.

Load plain paper in the Cassette by referring to "6 Load Paper" on page 15 and press the **OK** button.



- It takes about 4 minutes before the LCD changes.
- The machine may make some operating noises when preparing to print. This is normal operation.



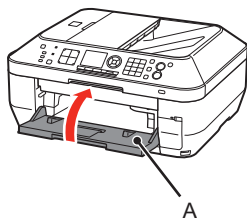
- If an error message is displayed on the LCD, make sure that the Print Head and the ink tanks are correctly installed.



- The LCD will turn off if the machine is not operated for about 5 minutes. To restore the display, press any button except the **ON** button.

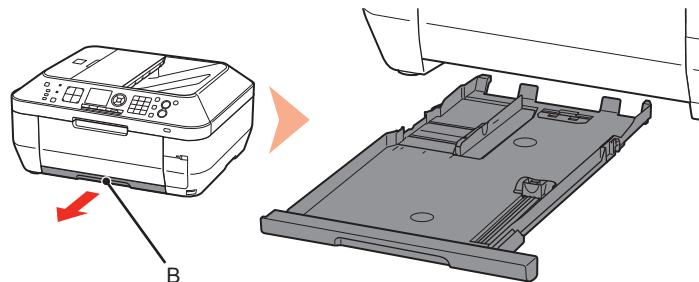
6 Load Paper

1



Close the Paper Output Tray (A).

2

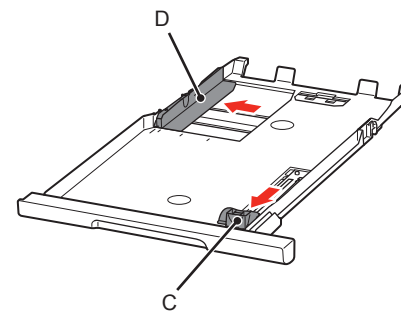


Pull out the Cassette (B).



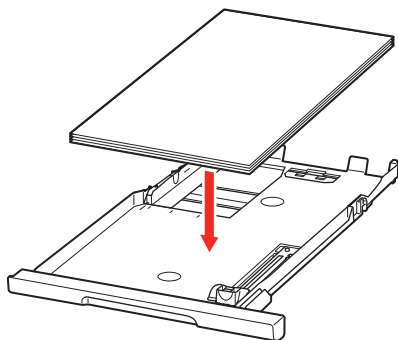
- The Cassette supports plain paper only. To load specialty paper including photo paper, refer from 8 on page 17.

3



Move the Paper Guides (C) and (D) to both edges.

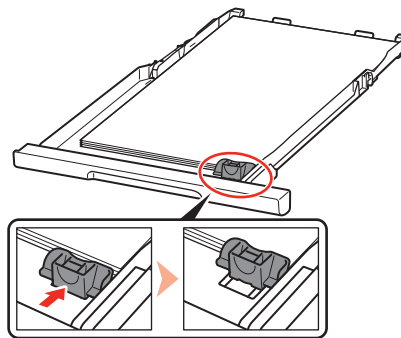
4



Load plain paper.

Load paper with the printing side facing down.

5

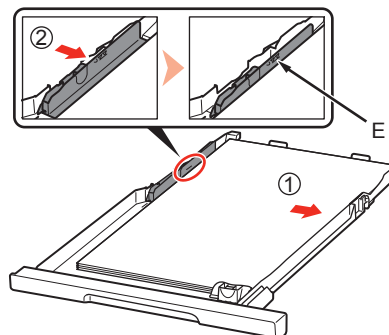


Slide the Paper Guide to align with the actual size of the paper.

The Paper Guide will click and stop when it aligns with the corresponding mark of paper size.

A slight space between the Paper Guide and the paper stack is acceptable.

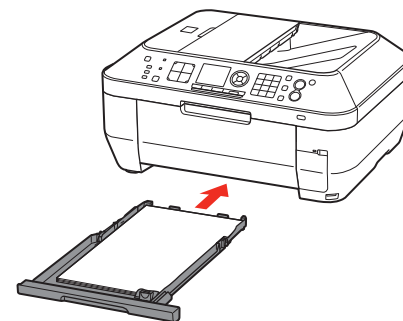
6



Align the paper to the right side of the Cassette (1), and slide the Paper Guide against the left edge of the paper (2).

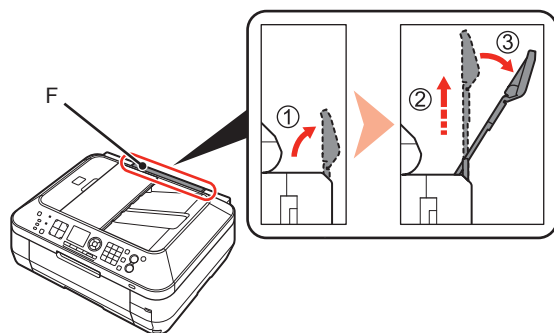
Make sure that the height of the paper stack does not exceed the line (E).

7



Insert the Cassette slowly into the machine until it clicks into place.

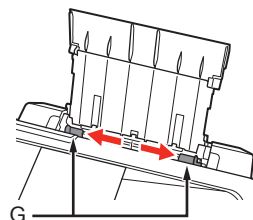
8



Prepare the Paper Support (F).

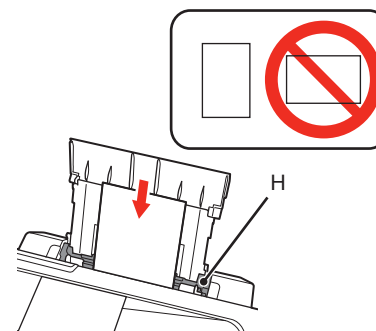
1. Open it.
2. Withdraw it upwards.
3. Tilt it back.

9



Move the Paper Guides (G) to both edges.

10



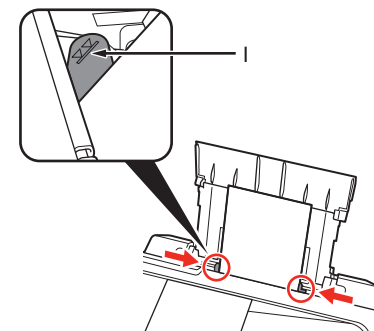
Load paper in the center of the Rear Tray (H).

Load paper in portrait orientation with the printing side facing up.



- Load specialty paper including photo paper in the Rear Tray.

11



Slide the left and right Paper Guides against both edges of the paper.

Make sure that the height of the paper stack does not exceed the line (I).



- For details on how to handle paper, refer to "Loading Paper" in the on-screen manual: **Basic Guide** after installation is complete.

7

Set Up for Fax Reception

Read this section only when using the machine as a fax.

If not using the machine as a fax, go to "8 Select Connection Method" on page 21.

The following four modes are available for receiving faxes. Select a receive mode according to your needs. You can change the receive mode any time. Refer to the on-screen manual:

Basic Guide.

Intended Use

- Want to use a telephone line for voice calls and faxes.
- Want to prioritize voice call reception over fax call reception because there are more opportunities to receive voice calls.

- Want to use a telephone line for voice calls and faxes.
- Want to prioritize fax call reception over voice call reception because there are more opportunities to receive faxes.

- Want to use a dedicated fax line.
- Want to use as a fax only.

- If you use Distinctive Ring Pattern Detection (DRPD) service

Receive Mode

TEL priority mode

Voice calls cannot be received unless a telephone is connected.

FAX priority mode

FAX only mode

DRPD



Responses to Calls in Each Mode



When a fax call arrives:

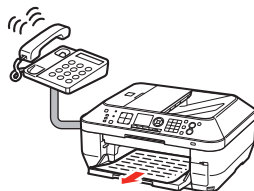


When a voice call arrives:

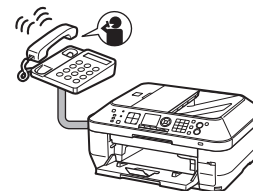
TEL priority mode

While the telephone's ringtone sounds, pick up the handset. When the fax reception starts, replace the handset.

If an answering machine is connected, the fax is received automatically.

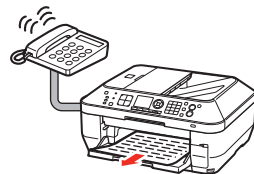


While the telephone's ringtone sounds, pick up the handset to answer the call.

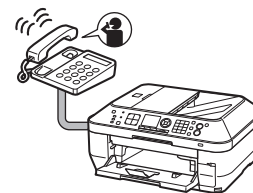


FAX priority mode

The telephone's ringtone sounds. The fax is received automatically.



The telephone's ringtone sounds, then the machine's ringtone sounds. Pick up the handset to answer the call.



FAX only mode

The fax is received automatically.

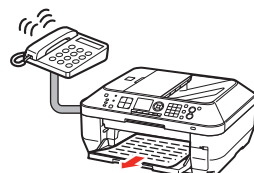


The call cannot be answered.

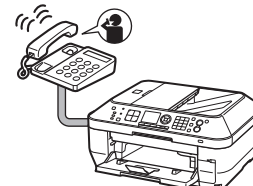


DRPD

The telephone's ringtone sounds. The fax is received automatically when the machine detects the fax ring pattern.

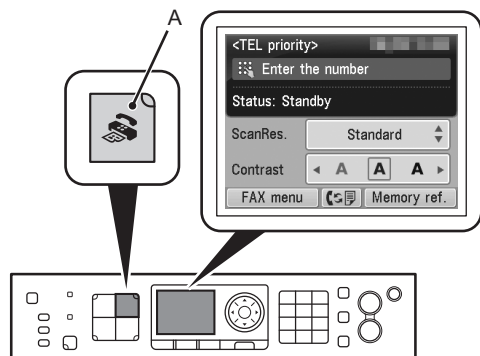


The telephone continues to ring. Pick up the handset to answer the call.



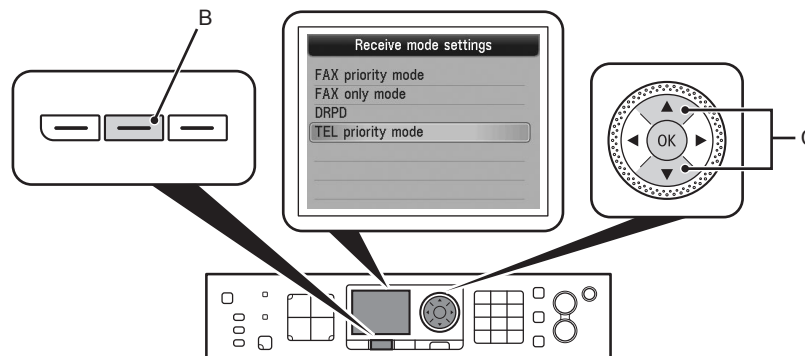
• Even when a telephone is connected to the machine, the telephone's ringtone may not sound for an incoming call depending on the type or settings of the telephone.

1



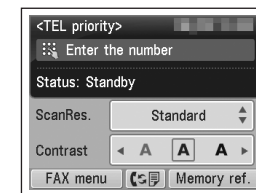
Press the **FAX** button (A).
 The fax standby screen is displayed.

2

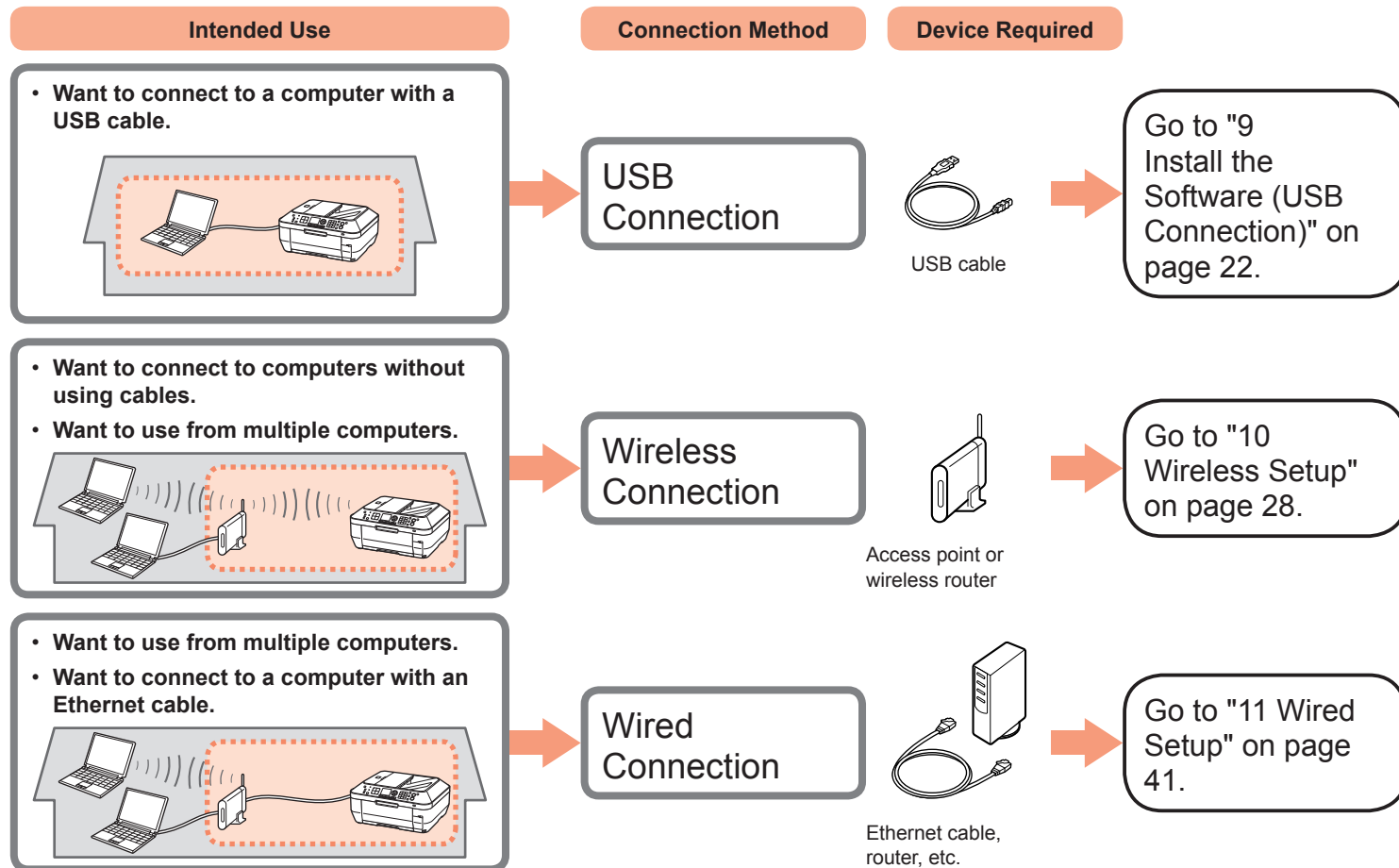


Press the **FUNCTION** button (B), then use the ▲ or ▼ button (C) to select a receive mode.

3



Press the **OK** button.
 The fax standby screen returns.



What is Network?

A system to exchange information between computers by connecting them to each other with cables or via wireless communication. The Internet and LAN are types of networks.

What is LAN (Local Area Network)?

A type of network that connects computers to each other within a limited area (room, building, etc.).

If it is uncertain whether your device (access point, router, etc.) supports wireless connection or wired connection, refer to the manual supplied with the device, or contact its manufacturer.

If Your Device Supports Wireless Connection

Check if it supports IEEE802.11b/g.

If Your Device Supports Wired Connection

Check if it supports simultaneous connection of multiple computers and network devices.

Do not connect the USB cable yet.

- To use the machine by connecting it to a computer, software including the drivers needs to be copied (installed) to the computer's hard disk. The installation process takes about 20 minutes. (The installation time varies depending on the computer environment or the number of application software to be installed.)
- Screens are based on Windows Vista Ultimate and Mac OS X v.10.5.x.

- ▶ Quit all running applications before installation.
- Log on as the administrator (or a member of the Administrators group).
- Do not switch users during the installation process.
- Internet connection may be required during the installation. Connection fees may apply. Consult the internet service provider.
- It may be necessary to restart your computer during the installation process. Follow the on-screen instructions and do not remove the **Setup CD-ROM** during restarting. The installation resumes once your computer has restarted.
- Mac OS 9, Mac OS X Classic environments, or Mac OS X v.10.4.10 or earlier are not supported.

Windows

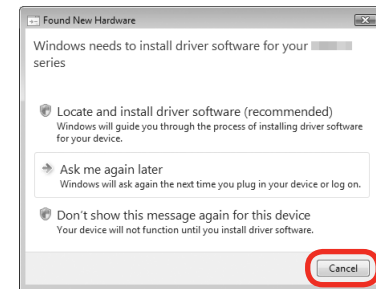
- If you connect the machine via USB cable before installing the software:

For Windows 7

1. Remove the USB cable connected to your computer.
2. Proceed to ① on page 23.

For Windows Vista/Windows XP/Windows 2000

The following dialog box may appear.

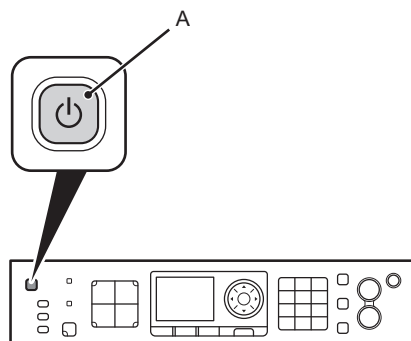


1. Remove the USB cable connected to your computer.
If the dialog box closes, proceed to ① on page 23.
2. Click **Cancel**.
3. Proceed to ① on page 23.

- Easy-WebPrint EX

If you are using Internet Explorer 7 or later, you can use the Web print software Easy-WebPrint EX. An internet connection is required for installation.

1



Press the **ON** button (A) to TURN OFF THE MACHINE.

Operating noise may continue for up to 30 seconds until the machine turns off.



- Do NOT connect the USB cable to the computer and the machine yet. If you have already connected the cable, disconnect it now.

2



Turn on the computer, then insert the **Setup CD-ROM** into the CD-ROM drive.

If you are using Windows, the setup program starts automatically.



For Windows

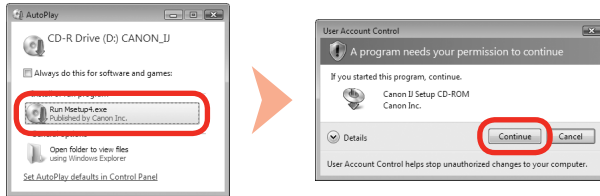
- If the program does not start automatically, double-click the CD-ROM icon in **Computer** or **My Computer**. When the CD-ROM contents appear, double-click **MSETUP4.EXE**.



3

Windows 7/Windows Vista

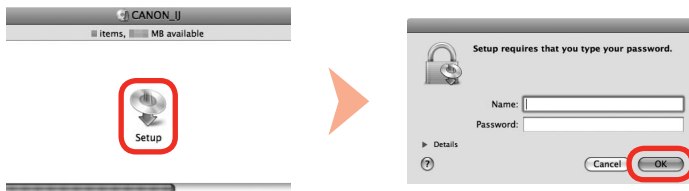
Windows XP/Windows 2000 → 4



Click **Run Msetup4.exe** on the **AutoPlay** screen, then click **Continue** or **Yes** on the **User Account Control** dialog box.

If the **User Account Control** dialog box reappears in following steps, click **Continue** or **Yes**.

3



Double-click the **Setup** icon of the CD-ROM folder to proceed to the following screen. Enter your administrator name and password, then click **OK**.

If the CD-ROM folder does not open automatically, double-click the CD-ROM icon on the desktop.

If you do not know your administrator name or password, click the help button, then follow the on-screen instructions.

4



Click **Easy Install**.

The drivers, application software, and on-screen manuals are installed all together.

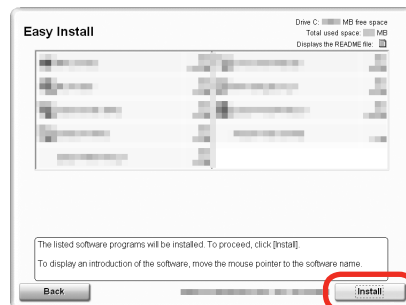


- If you want to select particular items to install, click **Custom Install**.

For Windows 7/Windows Vista SP1 or later

- You can install the XPS Printer Driver from **Custom Install**. When installing the XPS Printer Driver, select the MP Drivers at the same time.
- For details on useful functions of the XPS Printer Driver, refer to the on-screen manual: **Advanced Guide** after installation is complete.

5



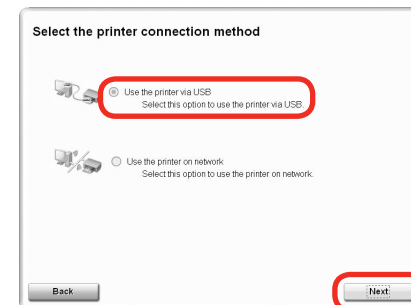
Click **Install**.



For Windows

- To install Easy-WebPrint EX, you need to connect your computer to the internet at this stage. (Internet Explorer 7 or later is required.) If an internet connection is not available, it is also possible to install this software later. For details, refer to "Useful Software Applications" in the on-screen manual: **Basic Guide** after installation is complete.

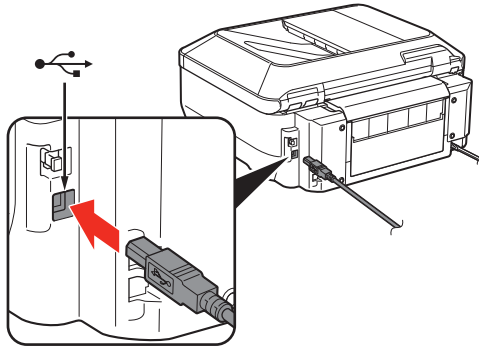
6



Select **Use the printer via USB**, then click **Next**.

Follow any on-screen instructions to proceed with the software installation.

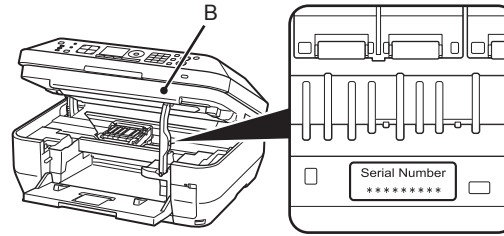
□ USB Port



When the **Printer Connection** screen appears, connect the machine to the computer with a USB cable.

The USB Port is located on the right side at the back of the machine. The lower port is for USB.

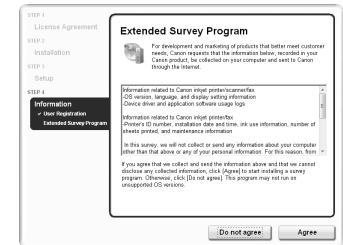
□ Necessary Information for the User Registration



The product serial number is required when registering the product. The serial number is located inside the machine (as shown in the illustration).

- ▶ If the power is on, the Print Head Holder will move when the Scanning Unit (Cover) (B) is opened.

□ If the **Extended Survey Program** screen appears



If you can agree to Extended Survey Program, click **Agree**.
If you click **Do not agree**, the Extended Survey Program will not be installed. (This has no effect on the machine's functionality.)

7



Click **Exit** to complete the installation.

If **Restart** is displayed, follow the instruction to restart the computer.

For Macintosh:

It is necessary to restart the computer before scanning using the Operation Panel on the machine for the first time.



- Remove the **Setup CD-ROM** and keep it in a safe place.
- The buttons displayed on Solution Menu may vary depending on the country or region of purchase.

8



For Windows:

Solution Menu starts automatically.

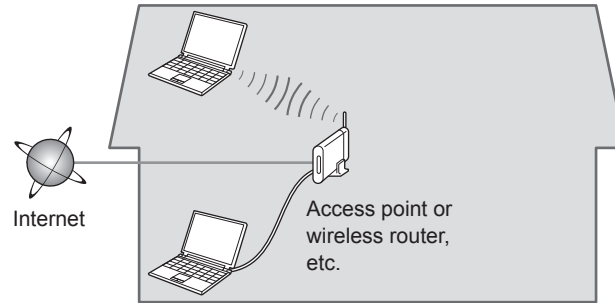
For Macintosh:



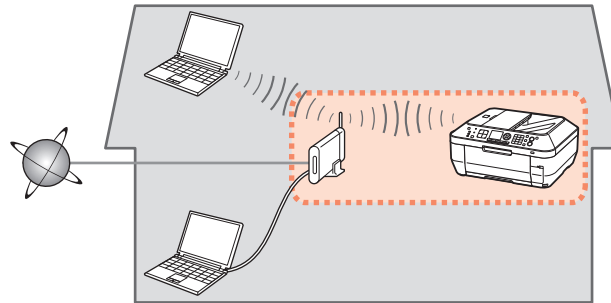
Click the icon on the Dock to start Solution Menu.

Congratulations! Setup is complete. Proceed to page 57 for information regarding the Solution Menu and the on-screen manual or page 58 to start using the machine.

Before connecting the machine to the network, the computer needs to be connected to the network. Make sure that configuration of the computer and access point or router is complete.



Add (connect) the machine to the network.



■ Notes on Wireless Connection

- The configuration, router functions, setup procedures and security settings of the network device vary depending on your system environment. For details, refer to your device's instruction manual or contact its manufacturer.
- In an office setup, consult your network administrator.
- If you connect to a network that is not protected with security measures, there is a risk of disclosing data such as your personal information to a third party.
- The machine cannot be used over a wireless and wired connection at the same time.
- If an error message appears or if you have trouble with the network connection, refer to the printed manual: **Network Setup Troubleshooting**.



An "Ad-hoc connection," which establishes a direct connection to the computer over a wireless connection without using an access point, is not supported. Be sure to prepare an access point.

■ Check the Information for Wireless Connection

The following information is required to connect to your access point or router.
Check your access point or router for the following information, then write it down.

For details on how to check the following information, refer to the manual of your access point or router, or contact its manufacturer.

Access Point Name/Network Name: _____

* Also referred to as SSID.

An identifier to identify the specific access point.

Network Key: _____

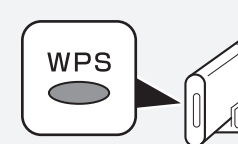
* Also referred to as encryption key, WEP key or WPA/WPA2 passphrase, Pre-Shared key.

A password required to set to prevent unauthorized access to communication.

You can retrieve your network key by using the Canon PIXMA Wireless Setup Assistant or the instructions which can be downloaded from the Canon support webpage (www.usa.canon.com/downloadlibrary).

If you are unable to retrieve the network key or other settings, refer to the manual of your access point or router, or contact its manufacturer.

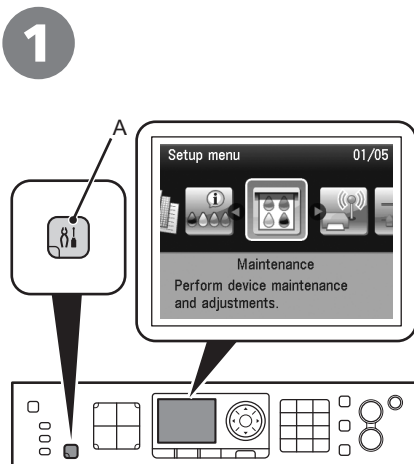
- If your access point or router supports WPS (Wi-Fi Protected Setup):



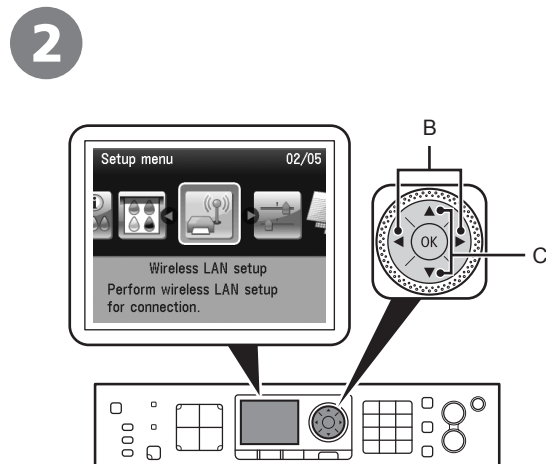
A wireless connection can be set up easily without checking the information to the left. Go to "Wireless Setup Using WPS (Wi-Fi Protected Setup)" on page 33.



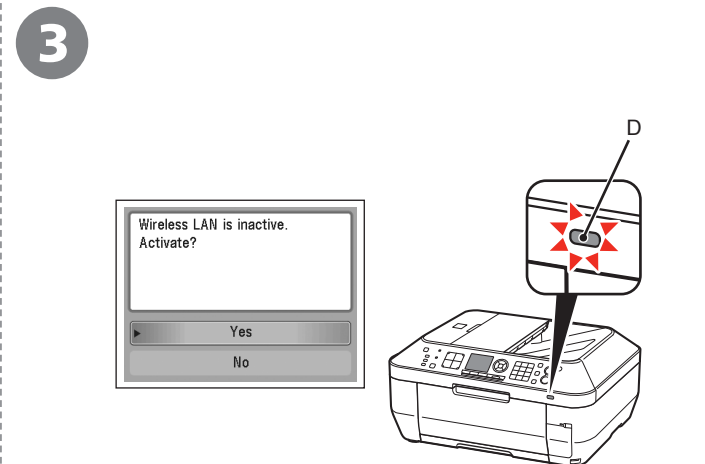
- For details on WPS, refer to the manual of your access point.
- If you are using Windows 7/Windows Vista and have a USB flash drive, you can configure wireless connection settings by using the WCN (Windows Connect Now) function as well. For details, refer to "Wireless Setup Using WCN (Windows Connect Now)" on page 36.



Press the **Setup** button (A).
The **Setup menu** screen is displayed.



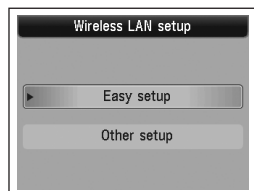
Use the ◀ or ▶ button (B) to select **Wireless LAN setup**, then press the **OK** button.



Use the ▲ or ▼ button (C) to select **Yes**, then press the **OK** button.

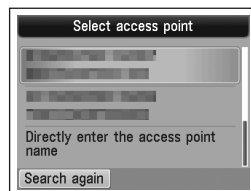
When wireless connection is enabled, the **Wi-Fi** lamp (D) lights blue.

4



Select **Easy setup**, then press the **OK** button.

5

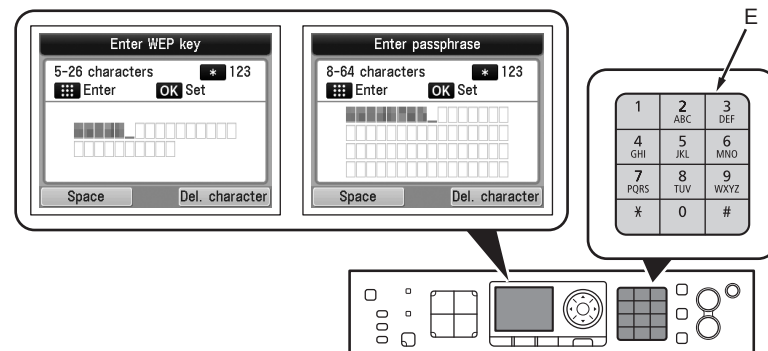


Select the access point name you wrote down on page 29, then press the **OK** button.



- If you are living in an apartment, nearby access points in use may be detected.

6



When one of the above screens is displayed, enter the network key you wrote down on page 29 using the Numeric buttons (E), then press the **OK** button.

If the above screen is not displayed, go to ③.

Press the **X** button to switch character entry modes.

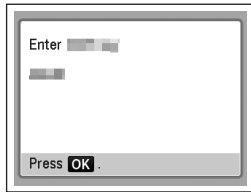


- Enter upper and lower case letters of the alphabet correctly.



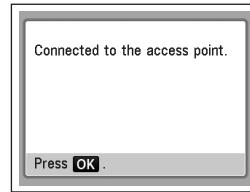
- For details on character entry, refer to the printed manual: **Network Setup Troubleshooting**.

7



Make sure that the network key is correct, then press the **OK** button.

8



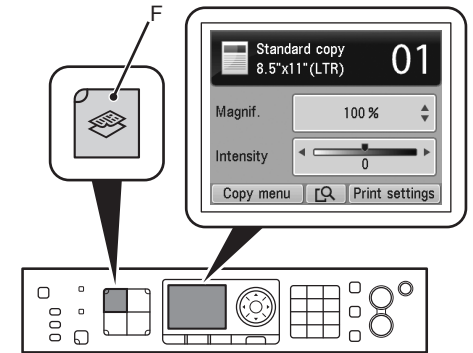
When the above screen appears, press the **OK** button.

The **Setup menu** screen returns.



- If **Failed to connect to the access point.** appears, press the **OK** button, make sure that the network key is correct, then enter it again. If a connection still cannot be established, refer to the printed manual: **Network Setup Troubleshooting**.

9



Press the **COPY** button (F).

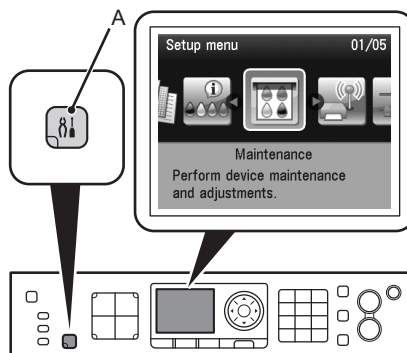
The copy standby screen is displayed.

Next, read "12 Install the Software (Network Connection)" on page 45!

Read this section only when setting up a wireless connection by using the WPS (Wi-Fi Protected Setup).

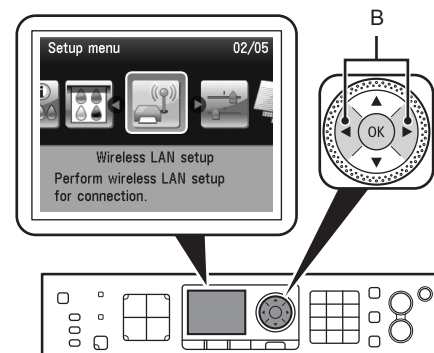
If not using WPS, the following procedure is not necessary.

1



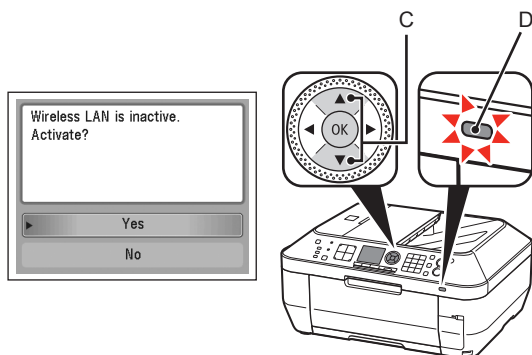
Press the **Setup** button (A).
The **Setup menu** screen is displayed.

2



Use the ◀ or ▶ button (B) to select **Wireless LAN setup**, then press the **OK** button.

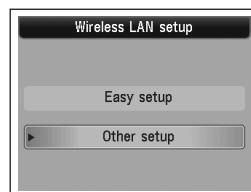
3



Use the ▲ or ▼ button (C) to select **Yes**, then press the **OK** button.

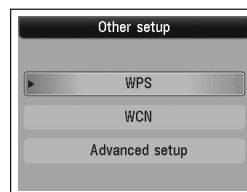
When wireless connection is enabled, the **Wi-Fi** lamp (D) lights blue.

4



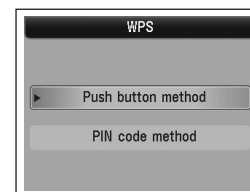
Select **Other setup**, then press the **OK** button.

5



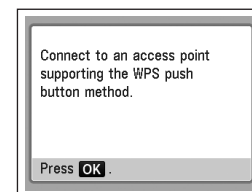
Select **WPS**, then press the **OK** button.

6



Select **Push button method**, then press the **OK** button.

7

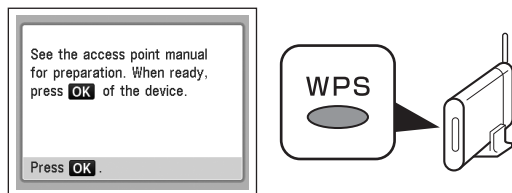


Press the **OK** button.



- To use the PIN code method for setup, select **PIN code method** in ⑥, then press the **OK** button. Follow the on-screen instructions to operate the machine and access point. When the screen in ⑨ appears, press the **OK** button. When the screen in ② returns, press the **COPY** button to return to the copy standby screen. A timeout error occurs if setup is not completed within 10 minutes. If the timeout error screen appears, press the **OK** button, then perform the setup again and set the new PIN code displayed on the screen to the access point. If another error appears, refer to the printed manual: **Network Setup Troubleshooting**.

8

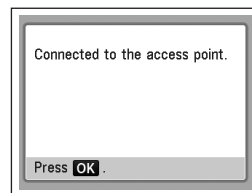


Press and hold the WPS button on the access point (for about 5 seconds), then press the **OK** button on the machine within 2 minutes.

For details on the WPS button pressing, refer to the manual of your access point.

The **Wi-Fi** lamp (blue) flashes while searching for or connecting to an access point.

9

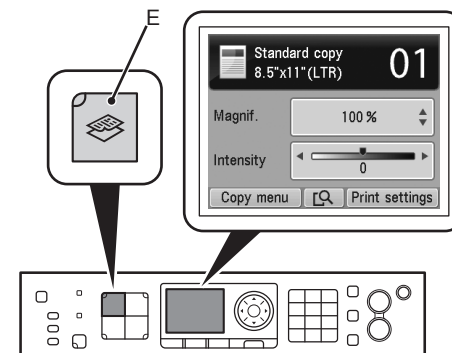


When the above screen appears, press the **OK** button.

The **Setup menu** screen returns.

- ▶ If the timeout error screen appears, press the **OK** button, then start over from 8.
- If another error appears, refer to the printed manual: **Network Setup Troubleshooting**.

10



Press the **COPY** button (E).

The copy standby screen is displayed.

Next, read "12 Install the Software (Network Connection)" on page 45!

Read this section only when setting up a wireless connection by using the WCN (Windows Connect Now) function of Windows 7/Windows Vista.

If not using WCN, the following procedure is not necessary.

Proceed with the setup according to your operating system.



- ▶ Before setting up by using the WCN, establish wireless communication between the computer and the access point.
- Canon assumes no responsibility for any damage or loss of data stored on your USB flash drive regardless of the cause even within the warranty period.
- If your USB flash drive cannot be attached to the Direct Print Port of the machine, a commercial extension cord (for USB flash drives) may be required.
- Operation may not be guaranteed depending on your USB flash drive.
- USB flash drives with security enabled may not be used.



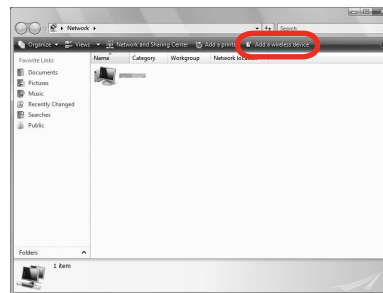
- The machine supports "WCN-UFD".

1 - A

Windows Vista

Windows 7 → **1 - B** (P.38)

1



From the **Start** menu of the Windows side, click **Network**.

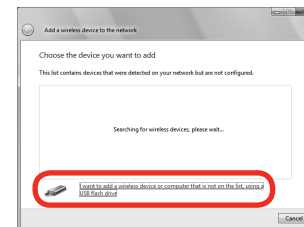
The **Network** folder opens.

2

Click **Add a wireless device** on the menu.

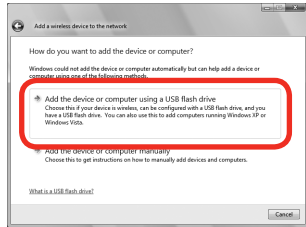
The **Add a wireless device to the network** screen will be displayed.

3



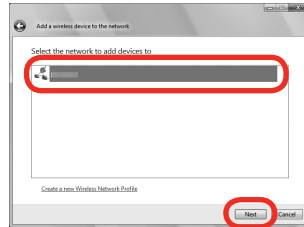
Click **I want to add a wireless device or computer that is not on the list, using a USB flash drive**.

4



Click **Add the device or computer using a USB flash drive**.

5

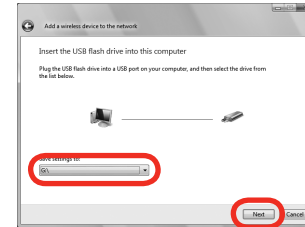


From the list, select the network name (SSID), then click **Next**.



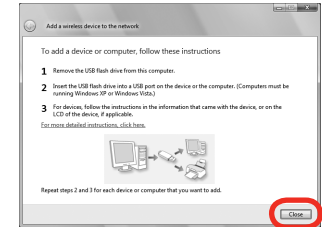
- If the **User Account Control** dialog box appears, click **Continue**.
If the same dialog box reappears in subsequent steps, click **Continue**.

6



Connect the USB flash drive to the computer, make sure that the drive name is displayed, then click **Next**.

7

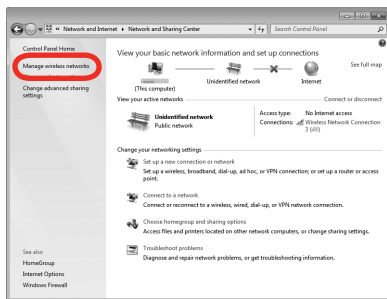


When the above screen appears, remove the USB flash drive from the computer, then click **Close**.



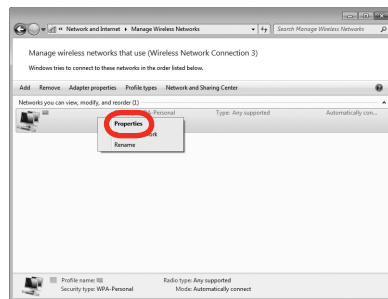
Go to **2** on page 39.

1



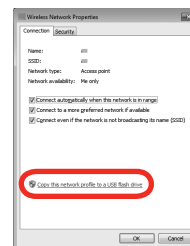
Click **Start > Control Panel > View network status and tasks > Manage wireless networks**.

2



Select the network name (SSID) from the list and right-click it, then select **Properties**.

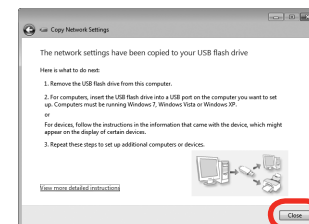
3



Select **Copy this network profile to a USB flash drive**.

Follow the on-screen instructions to connect the USB flash drive to the computer.

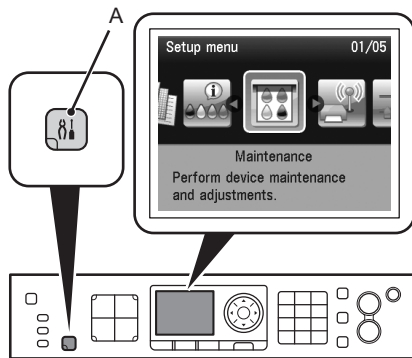
4



When the above screen appears, remove the USB flash drive from the computer, then click **Close**.

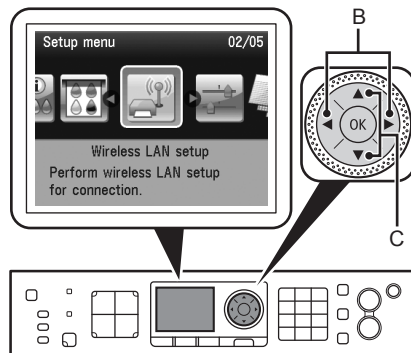
➡ Go to **2** on page 39.

2



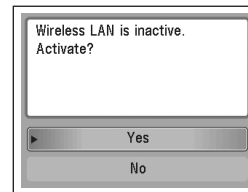
Press the **Setup** button (A).
The **Setup menu** screen is displayed.

3



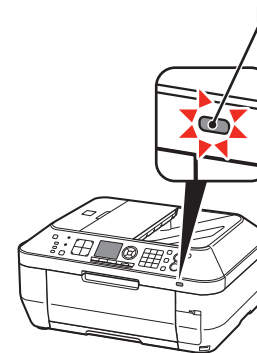
Use the ◀ or ▶ button (B) to select **Wireless LAN setup**, then press the **OK** button.

4

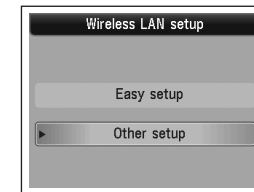


Use the ▲ or ▼ button (C) to select **Yes**, then press the **OK** button.

When wireless connection is enabled, the **Wi-Fi** lamp (D) lights blue.

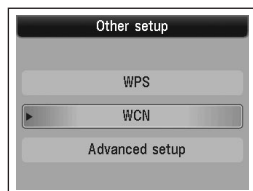


5



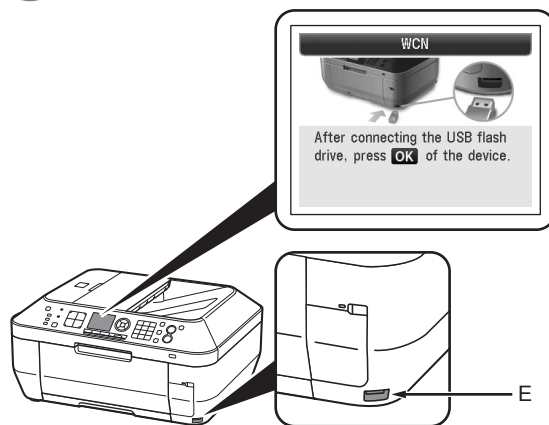
Select **Other setup**, then press the **OK** button.

6



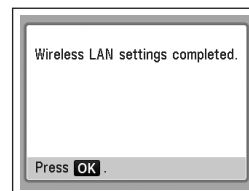
Select **WCN**, then press the **OK** button.

7



Connect the USB flash drive to the Direct Print Port (USB connector) (E) on the front right of the machine, then press the **OK** button.

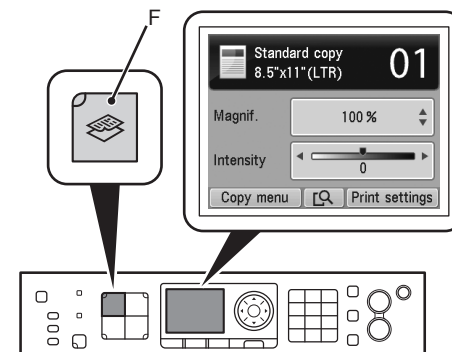
8



When the above screen appears, press the **OK** button, then remove the USB flash drive from the machine.

The **Setup menu** screen returns.

9



Press the **COPY** button (F).

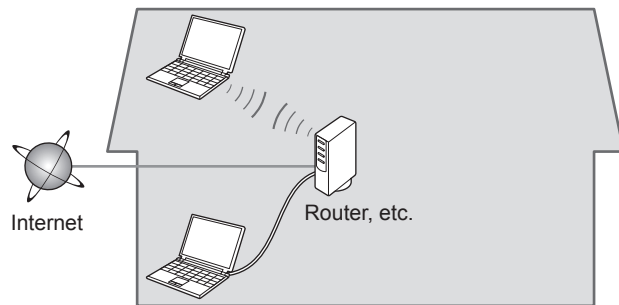
The copy standby screen is displayed.

Next, read "12 Install the Software (Network Connection)" on page 45!

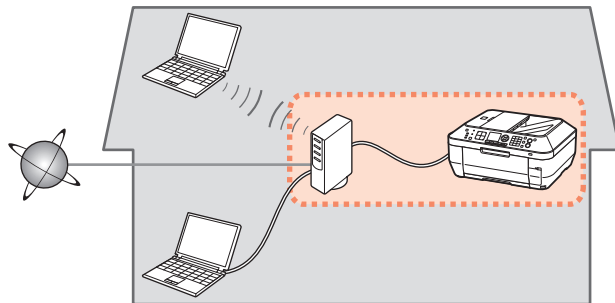
11

Wired Setup

Before connecting the machine to the network, the computer needs to be connected to the network. Make sure that configuration of the computer and router is complete.



Add (connect) the machine to the network.

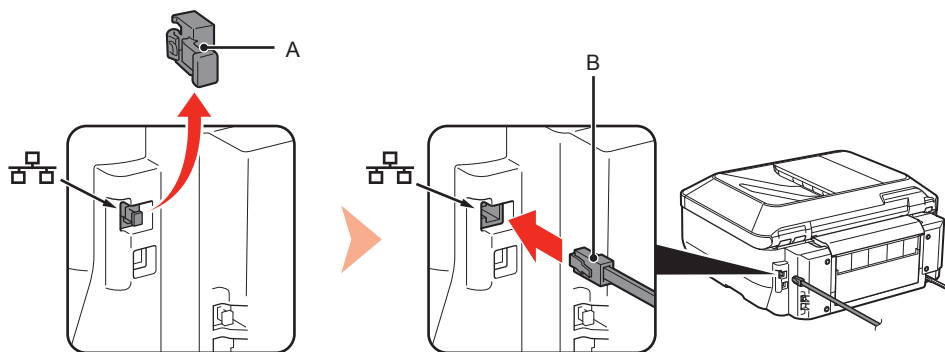


■ Notes on Wired Connection



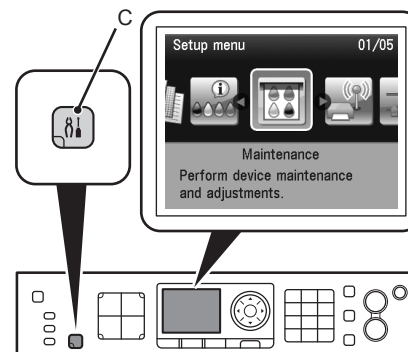
- The configuration, router functions, setup procedures and security settings of the network device vary depending on your system environment. For details, refer to your device's instruction manual or contact its manufacturer.
- In an office setup, consult your network administrator.
- If you connect to a network that is not protected with security measures, there is a risk of disclosing data such as your personal information to a third party.
- The machine cannot be used over a wireless and wired connection at the same time.
- If an error message appears or if you have trouble with the network connection, refer to the printed manual: **Network Setup Troubleshooting**.

1



Remove the Cap (A), then connect a network device (router, etc.) with an Ethernet cable (B).

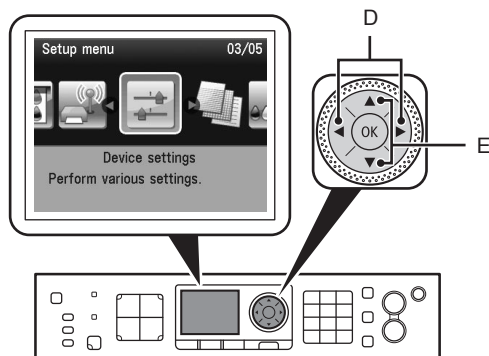
2



Press the **Setup** button (C).

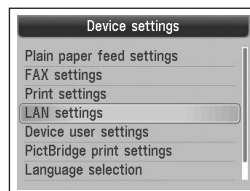
The **Setup menu** screen is displayed.

3



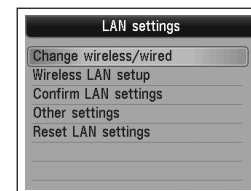
Use the ◀ or ▶ button (D) to select **Device settings**, then press the **OK** button.

4



Use the ▲ or ▼ button (E) to select **LAN settings**, then press the **OK** button.

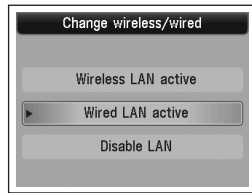
5



Select **Change wireless/wired**, then press the **OK** button.

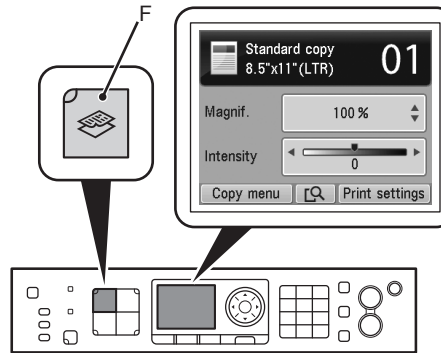


6



Select **Wired LAN active**, press the **OK** button.
The **LAN settings** screen returns.

7



Press the **COPY** button (F).
The copy standby screen is displayed.

Next, read "12 Install the Software (Network Connection)" on page 45!

Install the Software

- To use the machine by connecting it to a computer, software including the drivers needs to be copied (installed) to the computer's hard disk. The installation process takes about 20 minutes. (The installation time varies depending on the computer environment or the number of application software to be installed.)
- Screens are based on Windows Vista Ultimate and Mac OS X v.10.5.x.



- Quit all running applications before installation.
- Log on as the administrator (or a member of the Administrators group).
- Do not switch users during the installation process.
- Internet connection may be required during the installation. Connection fees may apply. Consult the internet service provider.
- It may be necessary to restart your computer during the installation process. Follow the on-screen instructions and do not remove the **Setup CD-ROM** during restarting. The installation resumes once your computer has restarted.
- If the firewall function of your security software is turned on, a warning message may appear that Canon software is attempting to access the network. If such a warning message appears, set the security software to always allow access.
- Mac OS 9, Mac OS X Classic environments, or Mac OS X v.10.4.10 or earlier are not supported.

Windows

□ Easy-WebPrint EX

If you are using Internet Explorer 7 or later, you can use the Web print software Easy-WebPrint EX. An internet connection is required for installation.



1



Turn on the computer, then insert the **Setup CD-ROM** into the CD-ROM drive.

If you are using Windows, the setup program starts automatically.

For Windows

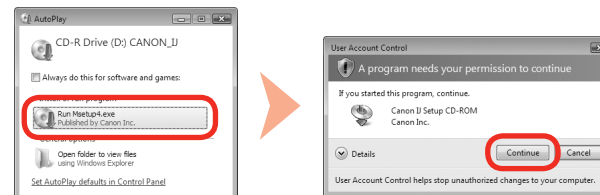
- If the program does not start automatically, double-click the CD-ROM icon in **Computer** or **My Computer**. When the CD-ROM contents appear, double-click **MSETUP4.EXE**.

Macintosh

2

Windows 7/Windows Vista

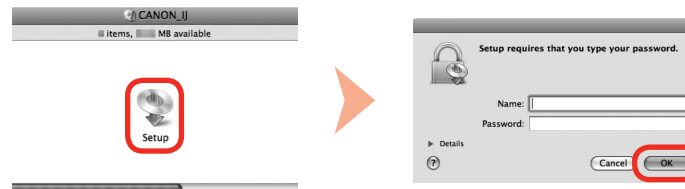
Windows XP/Windows 2000 → 3



Click **Run Msetup4.exe** on the **AutoPlay** screen, then click **Continue** or **Yes** on the **User Account Control** dialog box.

If the **User Account Control** dialog box reappears in following steps, click **Continue** or **Yes**.

2



Double-click the **Setup** icon of the CD-ROM folder to proceed to the following screen. Enter your administrator name and password, then click **OK**.



If the CD-ROM folder does not open automatically, double-click the CD-ROM icon on the desktop.



If you do not know your administrator name or password, click the help button, then follow the on-screen instructions.

3



Click **Easy Install**.

The drivers, application software, and on-screen manuals are installed all together.

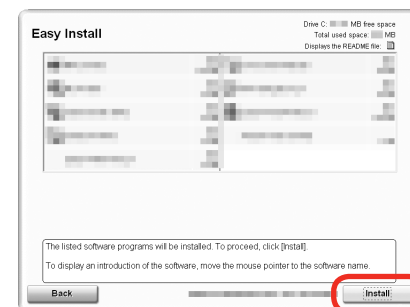


- If you want to select particular items to install, click **Custom Install**.

For Windows 7/Windows Vista SP1 or later

- You can install the XPS Printer Driver from **Custom Install**. When installing the XPS Printer Driver, select the MP Drivers at the same time.
- For details on useful functions of the XPS Printer Driver, refer to the on-screen manual: **Advanced Guide** after installation is complete.

4



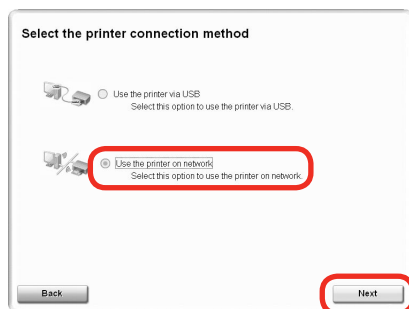
Click **Install**.



For Windows

- To install Easy-WebPrint EX, you need to connect your computer to the internet at this stage. (Internet Explorer 7 or later is required.)
If an internet connection is not available, it is also possible to install this software later. For details, refer to "Useful Software Applications" in the on-screen manual: **Basic Guide** after installation is complete.

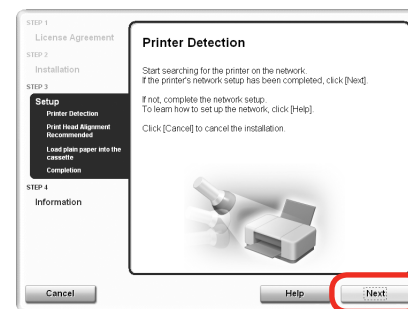
5



Select **Use the printer on network**, then click **Next**.

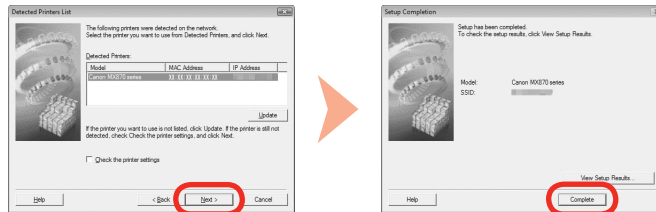
Follow any on-screen instructions to proceed with the software installation.

6



When the **Printer Detection** screen appears, click **Next**.

- ▶ If the **Printer Connection** screen appears instead of the screen above, the connection method is not correctly selected in 5.
 - For Windows
Click **Cancel** and start again from 4, then be sure to select **Use the printer on network** in 5.
 - For Macintosh
Follow on-screen instructions and proceed with the installation. Click **Exit** on the installation complete screen, then start again from 2 and be sure to select **Use the printer on network** in 5.

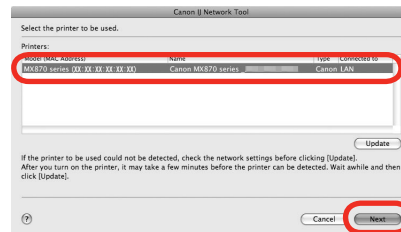


When the **Detected Printers List** dialog box appears, select **Canon MX870 series**, then click **Next**.

When the **Setup Completion** dialog box appears, click **Complete**.

- If the machine is not detected, **Check Printer Settings** dialog box is displayed. Refer to the printed manual: **Network Setup Troubleshooting**. Make sure there is no problem, then click **Next** again on the screen in ⑥.

Next, read "Install the Software (Information)" on page 54!



On the **Canon IJ Network Tool** screen, select **MX870 series** in **Printers**, then click **Next**.

- If the machine is not detected, refer to the printed manual: **Network Setup Troubleshooting**. Make sure there is no problem, then click **Update**.

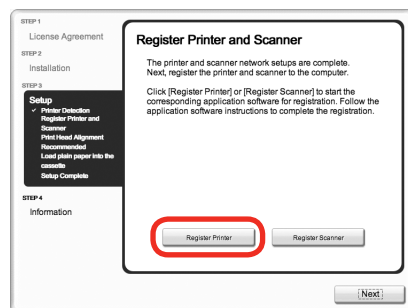
Next, read "Install the Software (Registration)" on page 50!

Macintosh

This section describes how to register the machine on a Macintosh computer.

Windows users: read "Install the Software (Information)" on page 54.

1



When the **Register Printer and Scanner** screen appears, click **Register Printer**.

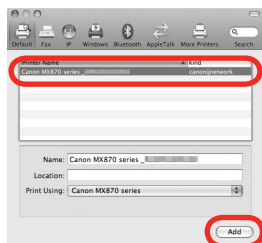
- Proceed to the section that relates to your operating system for further installation instructions.

Mac OS X

- v.10.6.x → Go to **2 - A** on page 51.
- v.10.5.x → Go to **2 - A** on page 51.
- v.10.4.11 → Go to **2 - B** on page 51.

- The alphanumeric characters after **Canon MX870 series** is the machine's Bonjour service name or MAC address.
- If the machine has not been detected, make sure of the following.
 - The machine is turned on.
 - The firewall function of any security software is turned off.
 - Wireless Connection: The computer is connected to the access point.
 - Wired Connection: The machine is connected to the network device with the Ethernet cable.

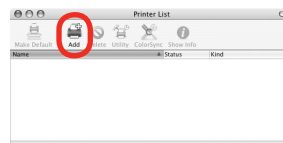
1



Select **Canon MX870 series** and click **Add**.

➔ Go to **3** on page 52.

1

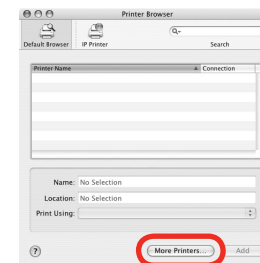


When the **Printer List** window appears, click **Add**.



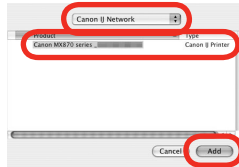
- When the **You have no printers available.** screen appears, click **Add**.

2



Click **More Printers** in the **Printer Browser** window.

3



Select **Canon IJ Network** in the pop-up menu, select **Canon MX870 series** in the list of printers, then click **Add**.

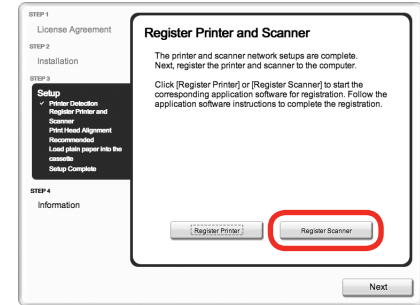
4



Make sure that **Canon MX870 series** is added to the list of printers.

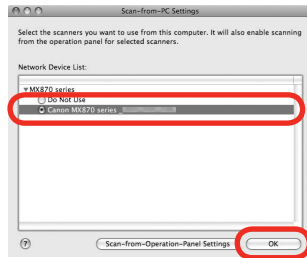
➞ Go to 3.

3



When the **Register Printer and Scanner** screen appears, click **Register Scanner**.

4



Select **Canon MX870 series** on the **Scan-from-PC Settings** screen, then click **OK**.

5

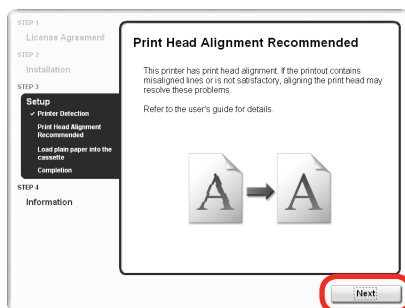


Click **Next** on the **Register Printer and Scanner** screen.

Next, read "Install the Software (Information)" on page 54!

Windows / Macintosh

1

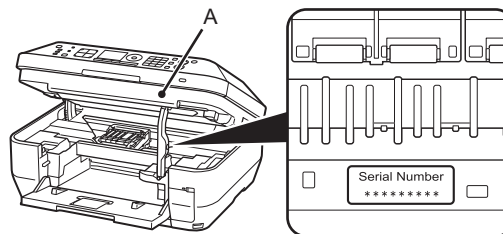


Click **Next**.

Follow any on-screen instructions to proceed with the software installation.

Important Information for the Installation

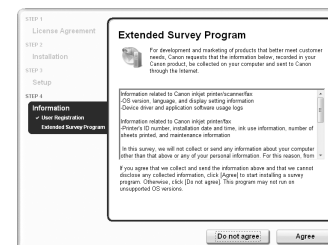
□ Necessary Information for the User Registration



The product serial number is required when registering the product. The serial number is located inside the machine (as shown in the illustration).

- ▶ If the power is on, the Print Head Holder will move when the Scanning Unit (Cover) (A) is opened.

□ If the **Extended Survey Program** screen appears



If you can agree to Extended Survey Program, click **Agree**.
If you click **Do not agree**, the Extended Survey Program will not be installed. (This has no effect on the machine's functionality.)

2



Click **Exit** to complete the installation.

If **Restart** is displayed, follow the instruction to restart the computer.

For Macintosh:

It is necessary to restart the computer before scanning using the Operation Panel on the machine for the first time.



- Remove the **Setup CD-ROM** and keep it in a safe place.
- The buttons displayed on Solution Menu may vary depending on the country or region of purchase.

3



For Windows:

Solution Menu starts automatically.

For Macintosh:



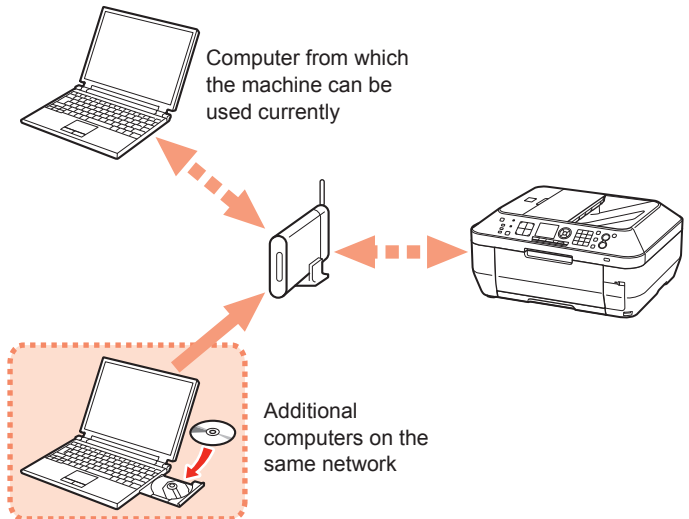
Click the icon on the Dock to start Solution Menu.

Using the Machine from Additional Computers

Now that the wireless/wired connection of the machine is complete, it can be used from additional computers on the same network.

Install software including the drivers on the computer from which you want to use the machine. Other settings are not required.

For the software installation procedure, refer to "12 Install the Software (Network Connection)" on page 45.



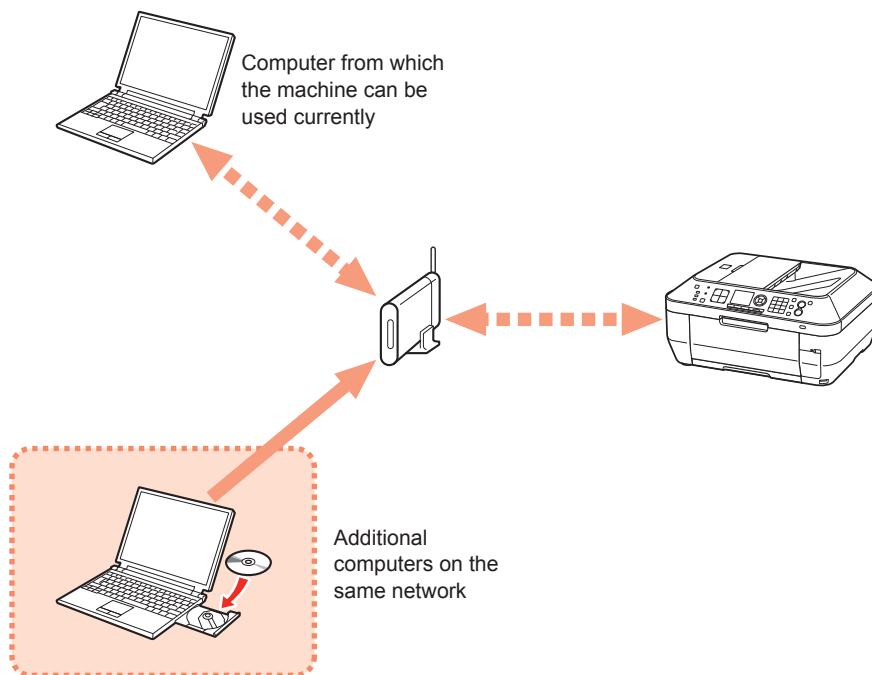
Congratulations! Setup is complete.
Proceed to page 57 for information regarding the Solution Menu and the on-screen manual or page 58 to start using the machine.

If the machine is already connected to a wireless/wired connection, it can be used from additional computers on the same network.

To use from additional computers

- 1 Insert the **Setup CD-ROM** into the computer from which you want to use the machine.
- 2 Follow the on-screen instructions to install the software.

Other settings are not required.



For details on the software installation procedure, refer to "12 Install the Software (Network Connection)" on page 45.



Use the Operation Panel on the machine to print your own items easily.

Various application software are installed on the computer along with the drivers. You can print creative items by correcting/enhancing photos using the application software.

For details on how to use the application software and the machine, refer to the on-screen manual.

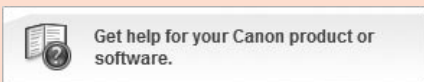


Solution Menu

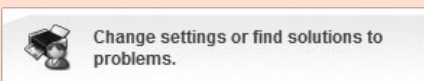
Solution Menu is a gateway to functions and information that allow you to make full use of the machine! For example,

- Open the on-screen manual with a single click.
- Open various application software with a single click.

How to open the on-screen manual



Click this button to open the on-screen manual.



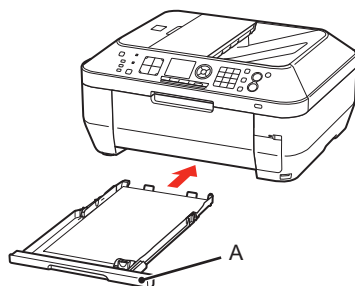
If you have a problem with machine settings, click this button.

How to start Solution Menu



Click this icon on the desktop (Windows) or on the Dock (Macintosh) to start Solution Menu.

1



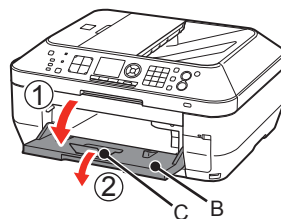
Load A4 or Letter-sized plain paper into the Cassette (A).

This section describes how to perform a standard copy.



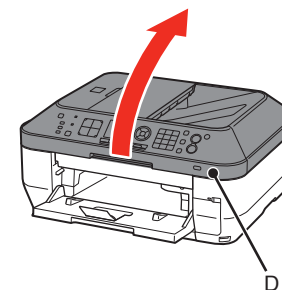
• For details, refer to "6 Load Paper" on page 15.

2



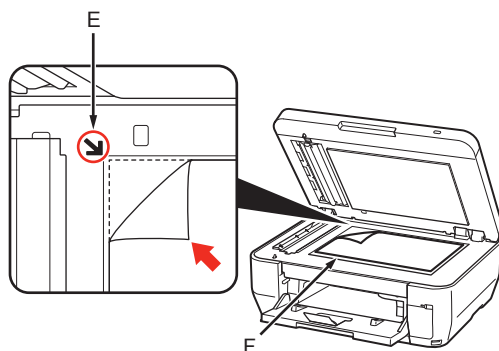
1. Open the Paper Output Tray (B).
2. Open the Output Tray Extension (C).

3



Open the Document Cover (D).

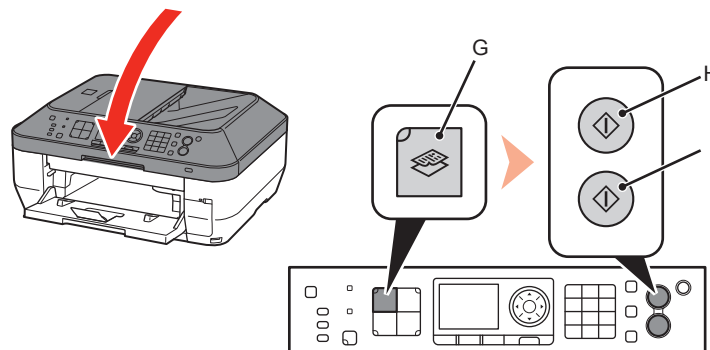
4



Place the document face-down and align it with the Alignment Mark (E).

- Do not place objects weighing 4.4 lb / 2.0 kg or more on the Platen Glass (F), or do not apply pressure to the document by pressing on it with a force exceeding 4.4 lb / 2.0 kg. The scanner may malfunction or the glass may break.

5



Close the Document Cover, press the **COPY** button (G), then press the **Black** button (H) or the **Color** button (I).

Copying will start. Remove the document after printing.

- Hold the Document Cover firmly when closing it because it is heavy.
- Do not open the Document Cover until copying is complete.



- When the machine is ready for copying, the **Black** button and **Color** button light up.

For the procedure to copy on paper other than plain paper, refer to "Copying" in the on-screen manual: **Advanced Guide**.

1



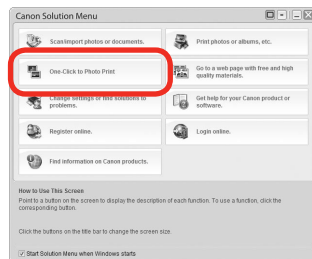
Load 4" x 6" size photo paper in the Rear Tray (A) in portrait orientation with the printing side facing up.

Make sure that the Paper Output Tray (B) and the Output Tray Extension (C) are open.

This section explains how to print borderless photos using 4" x 6" size Photo Paper Plus Glossy II.

- For details, refer from ③ in "6 Load Paper" on page 17.

2

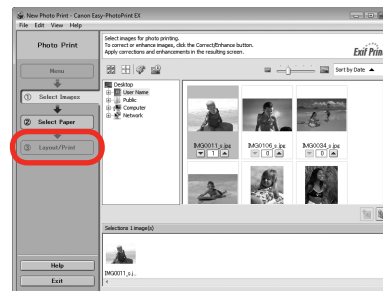


Start Solution Menu from the **Canon Solution Menu** icon on the desktop (Windows) or on the Dock (Macintosh), then click **One-Click to Photo Print**.

Easy-PhotoPrint EX starts.

- The screens are based on Windows Vista.
- For details on starting Solution Menu, refer to page 57.

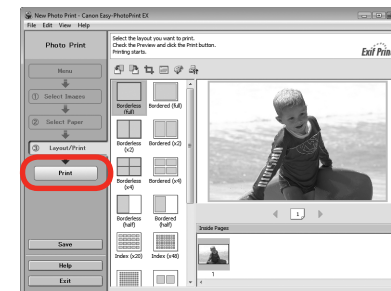
3



Select the image you want to print, then click **Layout/Print**.

When a photo is selected, the number of copies is set to "1".

4



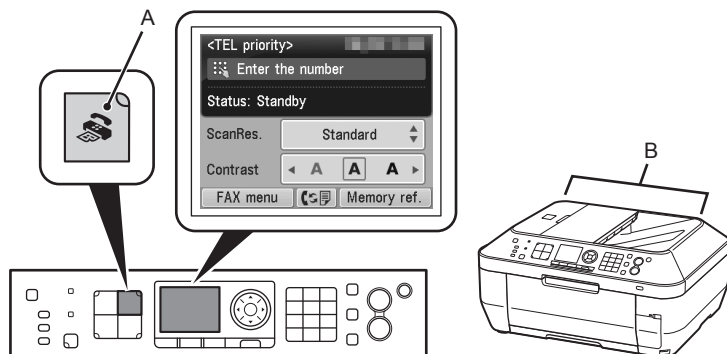
Click **Print**.

If you are using Windows, printing will start.

If you are using Macintosh, click **Print** on the **Print** dialog box to start printing.

For more information, refer to the on-screen manual: **Advanced Guide**.

1



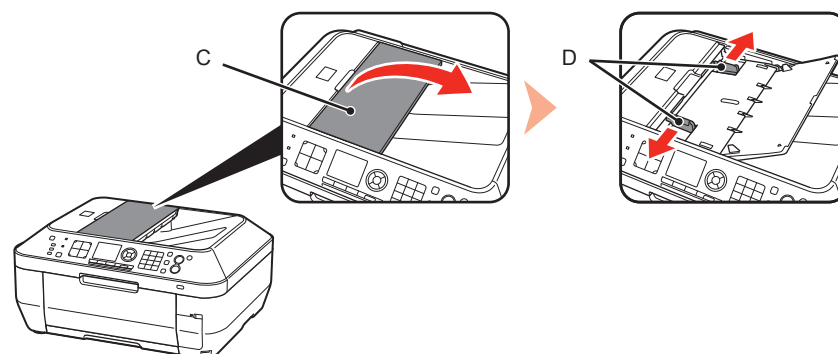
Press the **FAX** button (A).

The fax standby screen is displayed.

This section explains how to send a fax in black and white from the ADF (Auto Document Feeder) (B).

- Make sure that the telephone line type is set correctly. For the setting procedure, refer to "Preparing for Faxing" in the on-screen manual: **Basic Guide**.
- The setting may not be available depending on the country or region of your residence.

2

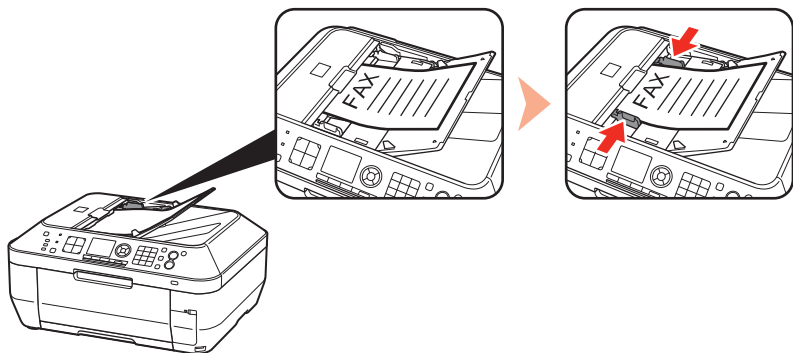


Open the Document Tray (C), then move the Document Guides (D) to both edges.



- For details on supported documents and settings for image quality, density (brightness), etc., refer to the on-screen manual: **Basic Guide**.

3

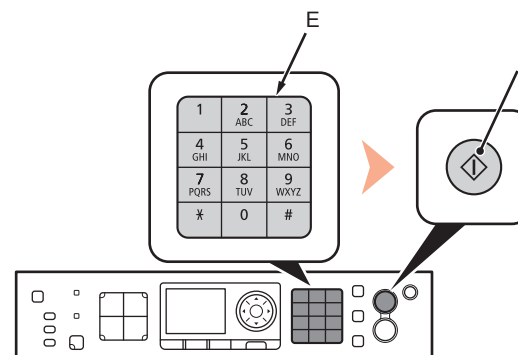


Insert the document until a beep sounds, then slide the left and right Document Guides against both ends of the document.



- Place the document face-up.

4



Use the Numeric buttons (E) to enter the fax number.

Press the **Black** button (F).

The fax is sent.



- For details on sender information, refer to "Specifying the Basic Settings for Faxing" in the on-screen manual: **Basic Guide**.
- When the machine is ready for faxing, the **Black** button and **Color** button light up.

For other procedures to send faxes, refer to "Faxing" in the on-screen manual: **Basic Guide**.


General Specifications	
Printing resolution (dpi)	9600* (horizontal) X 2400 (vertical) * Ink droplets can be placed with a pitch of 1/9600 inch at minimum.
Interface	USB Port: Hi-Speed USB *1 Direct Print Port: PictBridge Bluetooth v2.0 (Option) *2 *3 *4 USB flash drive LAN Port: Wired LAN: 100BASE-TX/10BASE-T Wireless LAN: IEEE802.11b/IEEE802.11g *5 *1 A computer that complies with Hi-Speed USB standard is required. Since the Hi-Speed USB interface is fully upwardly compatible with USB 1.1, it can be used at USB 1.1. *2 Maximum speed: 1.44 Mbps *3 JPEG/PNG only *4 Bluetooth connection is for printing only. *5 Setup possible through Easy setup, WPS (Wi-Fi Protected Setup) or WCN (Windows Connect Now).
Print width	8 inches/203.2 mm (for Borderless Printing: 8.5 inches/216 mm)
Operating environment	Temperature: 5 to 35°C (41 to 95°F) Humidity: 10 to 90% RH (no condensation)
Storage environment	Temperature: 0 to 40°C (32 to 104°F) Humidity: 5 to 95% RH (no condensation)
Power supply	AC 100-240 V, 50/60 Hz
Power consumption	Printing (Copy): Approx. 22W Standby (minimum): Approx. 3.4W* OFF: Approx. 0.9W* * USB connection to PC
External dimensions	Approx. 19.4 (W) X 17.3 (D) X 8.9 (H) inches Approx. 491 (W) X 437 (D) X 226 (H) mm * With the Paper Support and Paper Output Tray retracted.
Weight	Approx. 11.8 kg (Approx. 26.1 lb) * With the Print Head and ink tanks installed.
Print Head/Ink	Total 2,368 nozzles (PGBK 320 nozzles, Y/DyeBK each 256 nozzles, C/M each 768 nozzles)
ADF capacity	A4 or Letter size: Max. 35 sheets (20 lb/75 gsm paper), up to 0.20 inches/5 mm in height Legal size: Max. 30 sheets (20 lb/75 gsm paper), up to 0.16 inches/4 mm in height Other sizes: 1 sheet

Copy Specifications	
Multiple copy	Max 99 pages
Intensity adjustment	9 positions, Auto intensity (AE copy)
Reduction/Enlargement	25% - 400% (1% unit)

Scan Specifications	
Scanner driver	TWAIN/WIA (for Windows 7/Windows Vista/Windows XP)
Maximum scanning size	A4/Letter, 8.5 X 11.7 inches/216 X 297 mm (Platen Glass)/8.5 x 14.0 inches/216 x 356 mm (ADF)
Scanning resolution	Optical resolution (horizontal x vertical) max: 2400 dpi X 4800 dpi Interpolated resolution max: 19200 dpi X 19200 dpi
Gradation (Input/Output)	Gray: 16 bit/8 bit Color: 48 bit/24 bit (RGB each 16 bit/8 bit)

Fax Specifications	
Applicable line	Public Switched Telephone Network (PSTN)
Communication mode	Super G3, G3
Data compressing system	Black: MH, MR, MMR Color: JPEG
Modem speed	Max. 33.6 kbps (Automatic fallback)
Transmission speed	Black: Approx. 3 seconds/page at 33.6 kbps (Based on ITU-T No.1 chart for US specifications and Canon FAX Standard chart No.1 for others, both in standard mode or Canon FAX Standard chart No.1, standard mode.) Color: Approx. 1 minute/page at 33.6 kbps (Based on Canon COLOR FAX TEST SHEET.)
Gradation	Black: 256 levels Color: 24 bit Full Color (RGB each 8 bit)
Density adjustment	3 levels
Memory	Transmission/reception: approx. 250 pages (Based on ITU-T No.1 chart for US specifications and Canon FAX Standard chart No.1 for others, both in standard mode.)
Fax resolution	Black Standard: 8 pels/mm x 3.85 lines/mm (203 pels/inch x 98 lines/inch) Black Fine, Photo: 8 pels/mm x 7.70 lines/mm (203 pels/inch x 196 lines/inch) Black Extra fine: 300 x 300 dpi Color: 200 x 200 dpi
Dialing	Automatic dialing One-touch speed dial (max. 3 destinations) Coded speed dial (max. 100 destinations) Group dial (max. 102 destinations) Regular dialing (with Numeric buttons) Automatic redialing Manual redialing (with the Redial/Pause button/max. 10 destinations)
Others	Activity report (after every 20 transactions) Sequential broadcasting (max. 104 destinations) Rejected numbers (Max 10 destinations)

Network Specifications	
Communication protocol	TCP/IP
Wireless LAN	Supported Standards: IEEE802.11g/IEEE802.11b Transfer speed: IEEE802.11g: 6/9/12/18/24/36/48/54 Mbps IEEE802.11b: 1/2/5.5/11 Mbps Frequency bandwidth *1: 2.412-2.462GHz or 2.412GHz-2.472GHz Channel *1: 1-11 or 1-13 Communication distance: Indoors 50 m *2 Security: Encryption by WPA-PSK, WPA2-PSK, or WEP (64/128 bits), and access control by passwords *1 Frequency bandwidth and available channels differ depending on country or region. *2 Effective range varies depending on the installation environment and location.
Wired LAN	Supported Standards: IEEE802.3u (100BASE-TX)/IEEE802.3 (10BASE-T) Transfer speed: 10 M/100 Mbps (auto switching)

Minimum System Requirements		
 Conform to the operating system's requirements when higher than those given here.		
	Windows	Macintosh
Operating System	Windows 7	Mac OS X v.10.6
Processor	1 GHz or faster 32-bit (x86) or 64-bit (x64) processor	Intel processor
RAM	1 GB (32-bit)/2 GB (64-bit)	1GB
	Windows Vista, Vista SP1, Vista SP2	Mac OS X v.10.5
	1 GHz processor	Intel processor, PowerPC G5, PowerPC G4 (867 MHz or faster)
	512 MB	512 MB
	Windows XP SP2, SP3	Mac OS X v.10.4.11
	300 MHz processor	Intel processor, PowerPC G5, PowerPC G4, PowerPC G3
	128 MB	256 MB
	Windows 2000 Professional SP4	
	300 MHz processor	
	128 MB	
Browser	Internet Explorer 6 or later	Safari
Hard Disk Space	650 MB	850 MB
	Note: For bundled software installation.	Note: For bundled software installation.
CD-ROM Drive	Required	Required
Display	SVGA 800 x 600	XGA 1024 x 768
<ul style="list-style-type: none"> Windows: Operation can only be guaranteed on a PC with Windows 7, Windows Vista, Windows XP or Windows 2000 pre-installed. Windows: Uninstall software bundled with the Canon inkjet printer before upgrading from Windows Vista to Windows 7, then, install the bundled software again. Some functions may not be available with Windows Media Center. Macintosh: Hard Disk must be formatted as Mac OS Extended (Journaled) or Mac OS Extended. Macintosh: After upgrading from Mac OS X v.10.5 or lower to Mac OS X v.10.6, install software bundled with the Canon inkjet printer. Internet Explorer 7 or later is required to install Easy-WebPrint EX. 		

Additional System Requirements for the On-Screen Manuals	
Windows	Macintosh
Browser: Easy Guide Viewer Note: Internet Explorer 6 or later must be installed. The on-screen manual may not be displayed properly depending on your operating system or Internet Explorer version. We recommend that you keep your system up to date with Windows Update.	Browser: Easy Guide Viewer Note: The on-screen manual may not be displayed properly depending on your operating system or Safari version. We recommend that you keep your system up to date.

Specifications are subject to change without notice.

About Consumables

Consumables (ink tanks / FINE Cartridges) are available for 5 years after production has stopped.

Getting Help from Canon

Email Tech Support — www.usa.canon.com/support

Toll-Free Tech Support— 1-800-OK-CANON

This option provides live telephone technical support, free of service charges, Monday-Friday (excluding holidays), **during the warranty period**.
Telephone Device for the Deaf (TDD) support is available at 1-866-251-3752.

Ordering Information

The following ink tanks are compatible with this machine.



	Order #
CLI-221BK	2946B001
CLI-221M	2948B001
CLI-221Y	2949B001
PGI-220BK	2945B001
CLI-221C	2947B001

Call 1-800-OK-CANON to locate a dealer near you, or visit the Canon online store at www.shop.usa.canon.com

CANON U.S.A. INC.
One Canon Plaza, Lake Success, NY 11042 U.S.A.
www.usa.canon.com