

# Canon

## SYSTEM ACCESSORY GUIDE



# ***XL2***



# ***GL2***





# Professional Accessories

World Renowned Interchangeable Lens System for Unsurpassed Options.



**20x Zoom Lens XL 5.4-108mm  
f/1.6-3.5 L IS**

**XL2**

- 20x professional L-series Fluorite zoom lens.
- Zoom and focus presets.
- Super Range Optical Image Stabilization, (2) built-in ND filters, manual focus and zoom rings, and a Push AF button.



**16x Zoom Lens XL 5.5-88mm  
f/1.6-2.6 IS II**

**XL2**

- 16x zoom lens.
- Resolves 600 TV lines exceeding the DV standard of 500 TV lines for extraordinary sharpness.
- Super Range Optical Image Stabilization, (1) built-in ND filter, manual focus and zoom rings, and a Push AF button.



**Wide-Angle 3x Zoom Lens  
XL 3.4-10.2mm f/1.8-2.2**

**XL2**

- This 3.4mm–10.2mm short zoom lens is ideal for shooting interior and studio shooting as well as landscapes.



**16x Manual Servo Zoom Lens  
XL 5.4-86.4mm f/1.6**

**XL2**

- Fully manual focus with markings.
- Power or manual zoom with markings.
- Auto or manual iris.
- (2) ND filters (ND2.7 and ND5).



**Extender XL 1.6x**

**XL2**

- Increases the focal length of Canon XL lenses by 1.6x.
- The Extender XL 1.6x is not compatible with the Canon 3x Zoom lens.



**Ratio Converter RC-72**

**XL2**

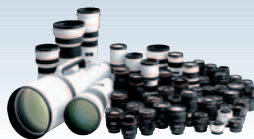
- When shooting in 4:3 Mode, this 0.8x converter provides the same angle of view as 16:9 Mode.
- The Ratio Converter RC-72 is not compatible with the Canon 3x Zoom lens.



**EF Adapter XL**

**XL2**

- Allows the attachment of Canon photographic EF lenses to the XL2.
- The EF Adapter XL is not compatible with Canon EF-S lenses.



**EF Lenses**

**XL2**

- Select from over 50 high-quality Canon EF lenses, ranging from Fisheye to Super Telephoto to a choice of versatile zoom models.



**WD-58H**

**GL2**

- Get closer to the subject and get more in the shot with this wide-angle converter for a 0.72x wider angle of view.

## Battery Chargers & DC Coupler



### CH-910 Dual Battery Charger/Holder

**XL2** **GL2**

It holds two 900 series lithium ion batteries. Can charge them consecutively or supply power to the camcorder. Perfect for use with the MA-100/MA-200.



### CA-920 Charger/Power Adapter

**XL2** **GL2**

Small & lightweight, it allows you to charge 900 series lithium ion batteries or supply AC power to the camcorder using the DC-920 Coupler.



### DC-920 DC Coupler

**XL2** **GL2**

Connects to the CA-920 Charger/ Power Adapter to provide power to the camcorder.



### CB-920 Car Battery Charger

**XL2** **GL2**

Allows for the convenience of powering your camcorder using the DC-920 or charging lithium ion battery packs from a car's cigarette lighter.

## Lithium Ion Batteries



### BP-945

**XL2** **GL2**

This allows the longest running time available. Its no memory property allows charging at anytime without the worry of lowering the battery life expectancy. (4500mAh)



### BP-930

**XL2** **GL2**

This high capacity lithium ion battery pack doubles the running time when compared to the BP-915. It allows charging at any time without the worry of lowering the battery life expectancy. (3000mAh)



### BP-915

**GL2**

This compact lithium ion battery pack has no memory property, so you can charge at any time without the worry of lowering battery life expectancy. (1500mAh)

## Viewfinder Units



### FU-1000 Monochrome CRT Viewfinder Unit

**XL2**

Professional style 1.5 inch monochrome CRT for use in critical shooting situations.

## Adapter



### TA-100 Tripod Adapter

**XL2**

Allows you to quickly mount/dismount the XL2 on or from a tripod.

## Remote Controller



### ZR-1000 Zoom Remote Controller

**XL2** **GL2**

Controls Start/Stop, Focus, On-Screen, Record Search (+/-) Variable and Single Speed Zoom.

## XLR Adapter



### MA-300 Microphone Adapter

**XL2** **GL2**

Connects (2) XLR style microphones. It attaches to the camcorder's Advanced Accessory Shoe, providing power and connection without any wires.

## Microphone

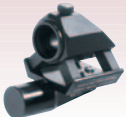


### DM-50 Directional Mic

**XL2** **GL2**

The DM-50 Microphone is a directional stereo mic which connects to the Advanced Accessory Shoe. No cables or additional power required.

## Lightwave System Products



### MM-XL1 Mini-Mount

**XL2**

Mini-mount will provide a true foundation presence for high quality audio recording, effectively eliminating zoom motor drone and gear tap noise. The Mini-mount is of a universal and modular design that enables you to instantly switch to other mics and will adapt to a boom pole.



### EQ-XL/EQ-GL Equalizer

**XL2** **GL2**

Equalizer will provide wind noise protection to 40 mph (EQ-XL) and 25 mph (EQ-GL) with no dB loss (dialogue) in the mid-range with a fully balanced frequency response curve.



### KATA Bag

**XL2** **GL2**

This durable bag has a solid frame that protects the camcorder while in transport or storage. Has enough space to fit the camcorder while fully loaded with available accessories for quick out of the bag shooting. Small enough to fit in most airline overhead bins.



### KATA Raincover

**XL2** **GL2**

This slick looking raincover protects the camcorder from the elements while still providing plenty of space to use all camera buttons for ease of operation.

## FireStore Products



### FireStore FS-4 Portable DTE Recorder

**XL2** **GL2**

The FireStore FS-4 eliminates the need to capture prior to editing and provides a confidence, drop-out free recording simultaneously to tape. Compact, portable, and rugged, it features a 40GB (about 3 hour) disk drive with FireWire interface.

\*Additional accessories are also available.

### FireStore FS-4 Pro Portable DTE Recorder

**XL2** **GL2**

Offering all the benefits of the FireStore FS-4, the Pro model adds Avid support, multiple timecode modes, retro-record, and scene marking. Available in 40GB (about 3 hour) and 80GB (about 6 hour) versions.

\*Additional accessories are also available.



## Video Lights



### VFL-1

GL2

Attaches to the Advanced Accessory Shoe for cable-free operation. It can turn on and off automatically. (The flash feature is not compatible with the XL2)



### VL-3

GL2

The VL-3 Video Light, connected to the Advanced Accessory Shoe, is powered directly by the camcorder without cables. Ideal for "filling" in shadows on bright days.



### VL-10Li

XL2 GL2

Powerful yet compact, the Battery Video Light VL-10Li, with its 10-watt illumination, improves lighting and image quality whether you are shooting indoors or out. A 900 series battery is required.

## Speedlite Flashes



### Speedlite 420EX

GL2

It can unlock a videographer's creative capabilities while still maintaining exceptional ease of use.



### Speedlite 550EX

GL2

More powerful than the 420EX, it offers strict professional specifications.

## Cables



### STV-150

XL2

This cable connector allows you to attach your camcorder to composite connections on your TV and VCR.



### STV-250N

GL2

Another miniplug connector for composite connections on your TV and VCR.



### S-150

XL2 GL2

For greater quality, this accessory allows you to connect your camcorder to TVs or VCRs that are S-video compatible.



### 4-pin to 4-pin IEEE 1394 Cable

XL2 GL2

Allows the connection of a digital video camcorder to another digital video camcorder or a computer.



### 4-pin to 6-pin IEEE 1394 Cable

XL2 GL2

Allows the connection of a digital video camcorder to a computer.

## Filters



### FS-72U Filter Set

XL2

This FS-72U Filter Set includes three filters for better image control under difficult lighting: ultraviolet (UV), neutral density (ND), circular polarizer.

## System Cases



### HC-3200

XL2

A solid, lockable case that allows you to protect the contents of the kit.



### HC-4100

GL2

A solid, lockable case that allows you to protect the contents of the kit. Certified for airline overhead bins.

## Digital Video/Head Cleaning Cassettes



### DVM-E60/DVM-E80

XL2 GL2

60 and 80-minute digital video cassettes.



### DVM-CL

XL2 GL2

Digital video head cleaning cassette.

## Tiffen Products



### 72mm Pro Mist 1/2 Filter

XL2

This filter is exceptional for creating a mood. Outdoors or indoors, in broad scenes or portraits. It is excellent for toning down excessive sharpness and reducing contrast by moderately lightening shadow areas without detracting from the overall image.



### 72mm BLK Pro Mist 1/2 Filter

XL2

Similar characteristics to Pro Mist, this filter also is great for toning down sharpness but provides a more subtle effect. Less lightening of shadows and reduction of contrast.



### 72mm Soft FX 2 Filter

XL2

This filter is used for softening unwanted details while retaining overall image clarity. It is the ideal filter for shooting portraits.



### 72mm ND6 Filter

XL2

This filter eliminates overly bright, washed out images. It is excellent for providing balanced exposures and depth-of-field control. Absorbs 2 stops.



### 72mm ND3 Filter

XL2

This filter eliminates overly bright, washed out images. It is excellent for providing balanced exposures and depth-of-field control. Absorbs 1 stop.

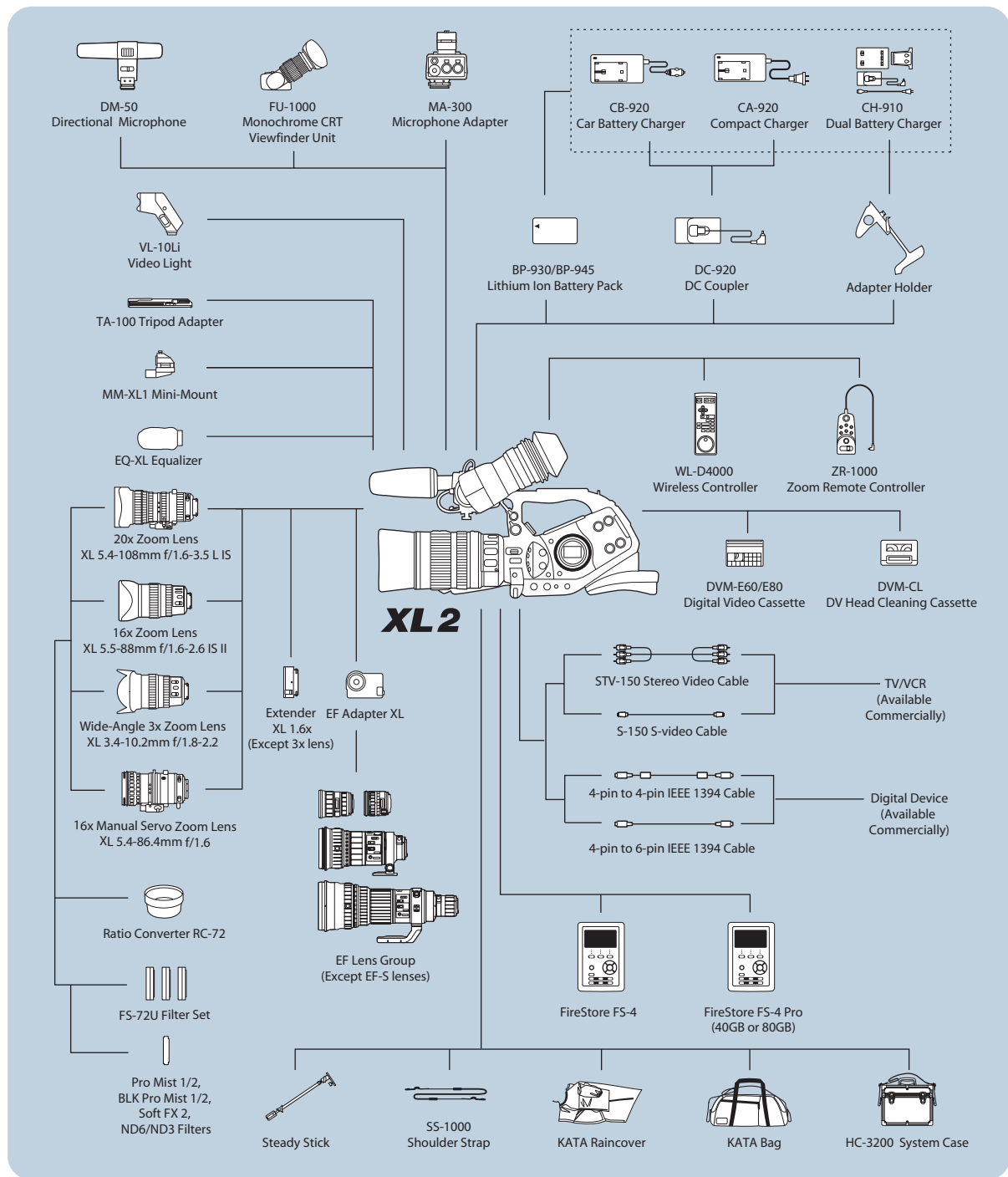


### Steady Stick

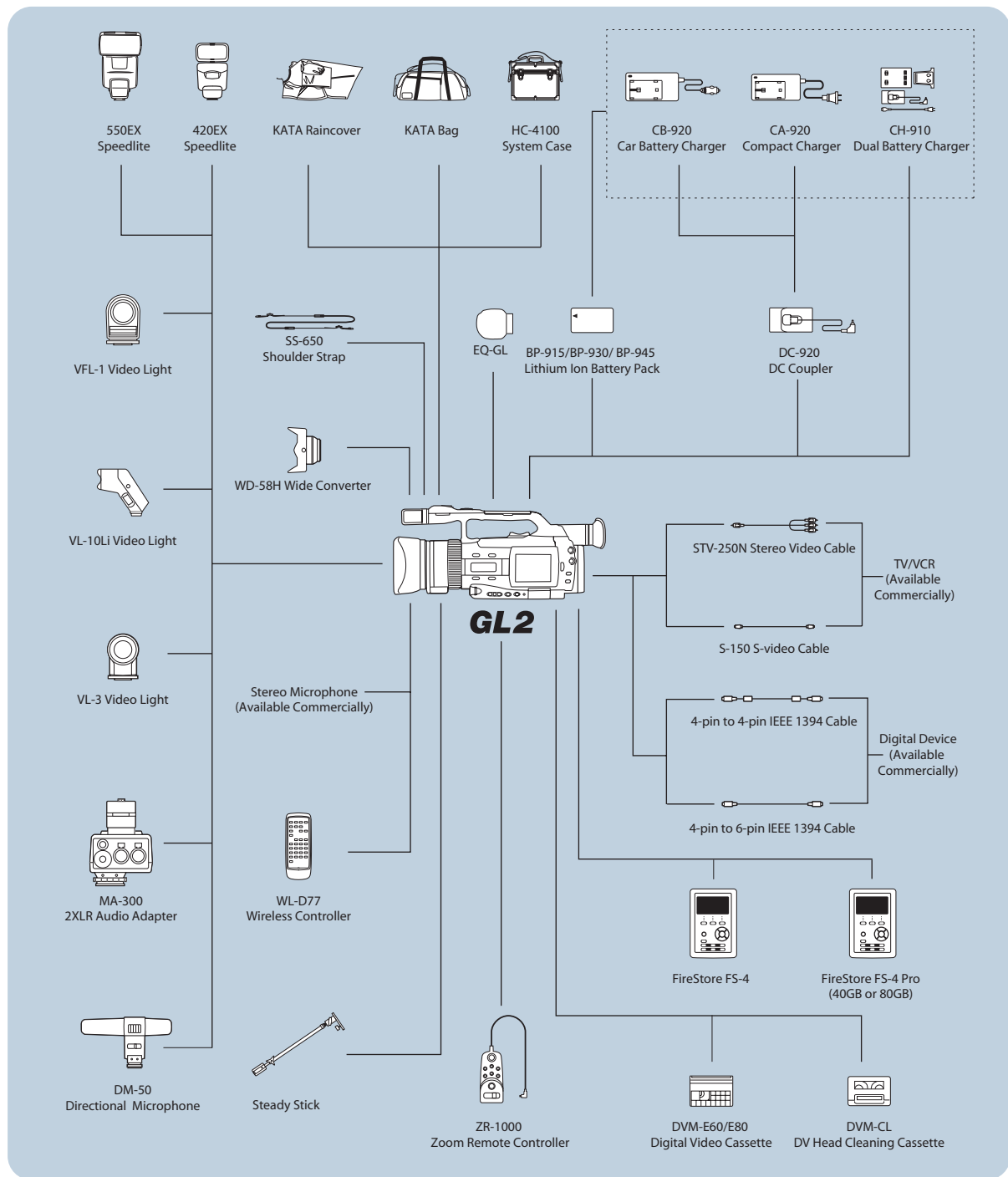
XL2 GL2

This small, lightweight steady stick supplies support for the camcorder when shooting to give you that rock solid shot. It can be broken down in size to allow easy transportation.

# XL2 System Diagram



# GL2 System Diagram



# Canon KNOW HOW®

1-800-OK-CANON / [www.usa.canon.com](http://www.usa.canon.com)

Canon U.S.A., Inc.  
One Canon Plaza, Lake Success, NY 11042 U.S.A.

Canon Canada Inc.  
6390 Dixie Road, Mississauga, Ontario L5T 1P7 Canada

Canon Mexicana, S. DE R.L. DE C.V.  
Bld. M. A. Camacho No. 138, Piso PB, 15, 16 y 17,  
Col. Lomas de Chapultepec, C.P. 11000 México, D.F. México

Canon Latin America, Inc.  
703 Waterford Way, Suite 400, Miami FL 33126 U.S.A.

Canon HongKong Co., Ltd.  
19/F, The Metropolis Tower, 10 Metropolis Drive,  
Hung Hom, Kowloon, Hong Kong

[www.canondv.com](http://www.canondv.com)

Canon and Canon Know How are registered trademarks of Canon Inc. in the United States and may also be registered marks in other countries. Other names and products not mentioned above may be registered trademarks or trademarks of their respective companies. Warning: Unauthorized recording of copyrighted materials may infringe on the rights of copyright owners and be contrary to copyright laws.

0046W354 02/05

©2005 CANON U.S.A., INC.

PRINTED IN U.S.A.