

**Canon**

**Wireless File Transmitter**  
**WFT-E1A**



**INSTRUCTION MANUAL**

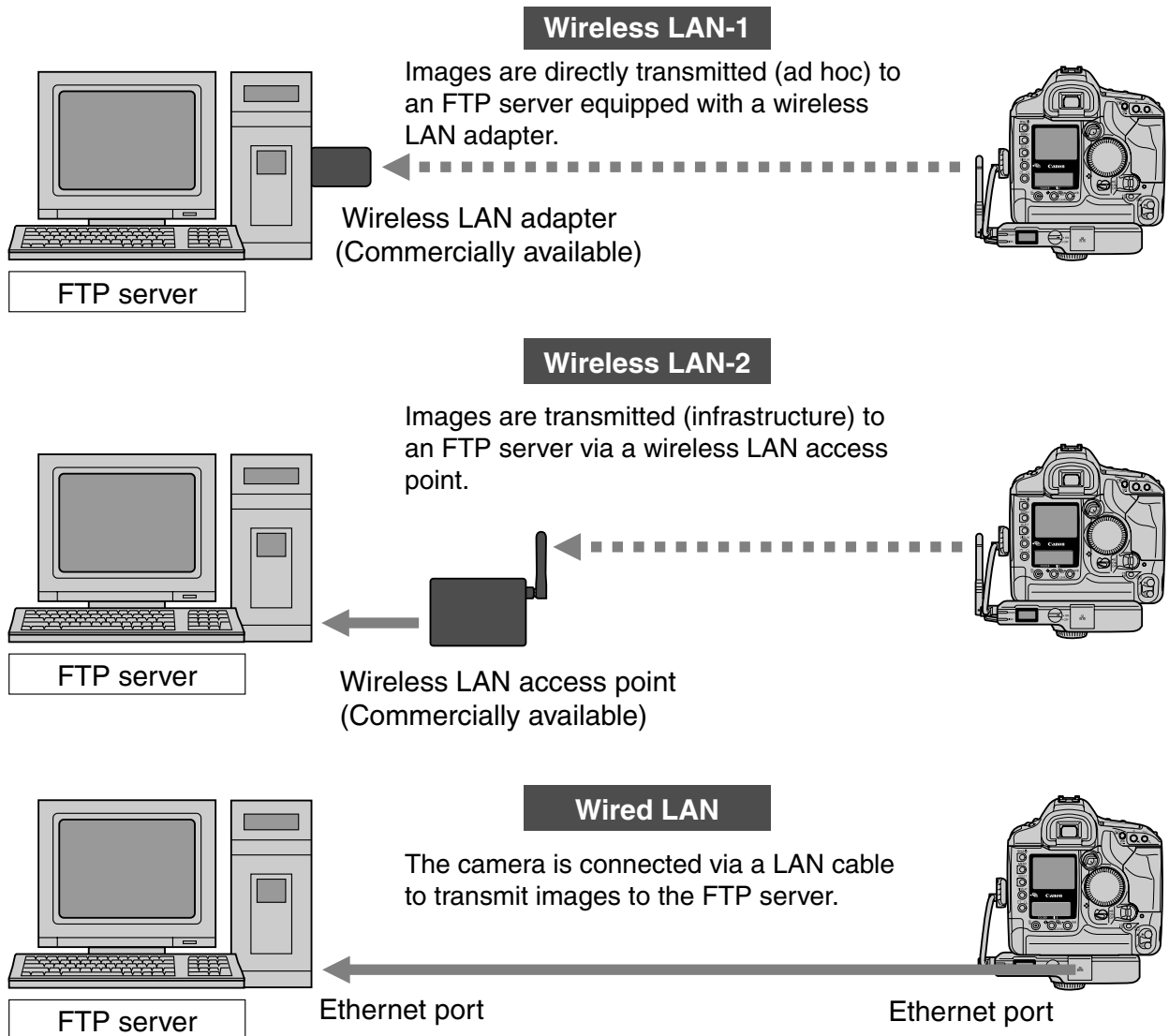
# Thank you for purchasing a Canon product.

Wireless File Transmitter WFT-E1A enable your EOS digital camera to send the captured images to an FTP server via a wireless or wired LAN.

It works with IEEE 802.11b and IEEE 802.11g wireless LANs and 100 Base-TX Ethernet wired LANs.

EOS digital cameras compatible with the WFT-E1A are listed on Canon's Web site. Or you can inquire at a Canon Service Center.

## Image Transfer Overview



# Item Check List

Check that all the following items have been included with the WFT-E1A. If anything is missing, contact your dealer.

---

**Wireless File Transmitter WFT-E1A**

**Normal Antenna NA-E1**

**Interface Cable IFC-15D4**

Cable approx. 15 cm/0.5 ft long (dust- and water-resistant) to connect to the IEEE 1394 port. Used when the WFT-E1A is attached to the camera's tripod socket.

**Interface Cable IFC-150D4**

Cable approx. 1.5 m/4.9 ft long (dust- and water-resistant) to connect to the IEEE 1394 port. Used when the WFT-E1A is placed some distance away from the camera.

**Tripod socket (with anti-rotation rubber pad)**

Used when the WFT-E1A is attached to the camera's tripod socket.

**Case**

Case for the WFT-E1A. Can be mounted on a belt. Strap also provided.

---

**WFT-E1/WFT-E1A Utility Disk**

Contains the instruction manual (what you are reading now) and software for creating the settings file.

---

**Warranty card**

---

\* Battery Pack and Battery Charger are not included. If necessary, purchase them separately (p.18).

\* Be careful not to lose any of the items included with the WFT-E1A.

- Canon and EOS are trademarks of Canon Inc.
- Windows is a trademark or registered trademark of Microsoft Corporation in the United States and other countries.
- Macintosh is a registered trademark of Apple Corporation in the United States and other countries.
- All other corporate names and trademarks mentioned in this manual are the property of their respective owners.

# Conventions Used in this Manual ■

- The instructions in this manual assume that the proper settings for the wireless LAN or wired LAN and FTP server have been completed. For details on how to set these settings, consult the manufacturer of the respective equipment.
- The menu screens are based on the EOS-1Ds Mark II's.
- Terms in brackets [ ] indicate the button name, icon name, camera menu item, etc.
- The number in parentheses indicate the number of the page where you can find more information.
- This manual assumes that you have read the camera's instruction manual and are familiar with camera operation procedures.
- This manual uses the following alert symbols:



: The Caution symbol indicates a warning to prevent mishaps.



: The Note symbol gives supplemental information.

- In this manual, "Windows XP" refers to Windows XP Home Edition/Professional, and "Windows 2000" refers to Windows 2000 Professional.

# Contents

<b>Introduction</b>	
Item Check List .....	3
Conventions Used in this Manual .....	4
Safety Warnings .....	7
Handling Precautions .....	8
<b>1 Creating the Settings File</b>	<b>9</b>
TCP/IP Settings .....	10
FTP Settings .....	11
Wireless LAN Settings .....	12
Saving the Settings .....	14
<b>2 Setting Up the WFT-E1A</b>	<b>15</b>
Nomenclature .....	16
Installing and Removing the Battery .....	18
Using a Household Power Outlet .....	20
Attaching the Antenna .....	21
Attaching to the Camera .....	22
Setting the LAN .....	23
Selecting the LAN Type .....	25
Checking the Connection Status .....	26
<b>3 Transferring Images</b>	<b>29</b>
Automatic Image Transfer After Each Shot .....	30
Image Batch Transfer After Shooting .....	32
Transferring RAW+JPEG Images .....	36
<b>4 Changing the LAN Settings with the Camera</b>	<b>37</b>
Setting TCP/IP .....	38
Setting the DNS Server .....	39
Setting the FTP Server .....	40
Setting Wireless LAN .....	43
Protecting and Saving the Settings .....	44
<b>5 Reference</b>	<b>45</b>
Troubleshooting Guide .....	46
Error Number Description .....	48
Specifications .....	49
Index .....	50

1

2

3

4

5

## Model DS508152

### For use of original antenna (NA-E1)

For body worn operation, this Model DS508152 has been tested and meets the FCC RF exposure guidelines when used with the Canon accessories supplied or designated for this product. Use of other accessories may not ensure compliance with FCC RF exposure guidelines.

### For use of option antenna (ERA-E1)

This equipment complies with FCC radiation exposure limits set forth for uncontrolled equipment and meets the FCC radio frequency (RF) Exposure Guidelines in Supplement C to OET65. This equipment should be installed and operated with at least 20cm and more between the radiator and person's body (excluding extremities: hands, wrists, feet and legs).

This device complies with Part 15 of the FCC Rules. Operation is subject to the following two conditions: (1) This device may not cause harmful interference, and (2) this device must accept any interference received, including interference that may cause undesired operation.



Note: This equipment has been tested and found to comply with the limits for class B digital devices, pursuant to Part 15 of the FCC Rules. These limits are designed to provide reasonable protection against harmful interference in a residential installation. This equipment generates, uses and can radiate radio frequency energy and, if not installed and used in accordance with the instructions, may cause harmful interference to radio communications. However, there is no guarantee that interference will not occur in a particular installation. If this equipment does cause harmful interference to radio or television reception, which can be determined by turning the equipment off and on, the user is encouraged to try to correct the interference by one or more of the following measures:

- Reorient or relocate the receiving antenna.
- Increase the separation between the equipment and receiver.
- Connect the equipment into an outlet on a circuit different from that to which the receiver is connected.
- Consult the dealer or an experienced radio/TV technician for help.

The cable with the ferrite core provided with the digital camera must be used with this equipment in order to comply with Class B limits in Subpart B of Part 15 of the FCC rules.

Do not make any changes or modifications to the equipment unless otherwise specified in the manual. If such changes or modifications should be made, you could be required to stop operation of the equipment.

This transmitter must not be co-located or operating in conjunction with any other antenna or transmitter.

Canon U.S.A. Inc.  
One Canon Plaza, Lake Success, NY 11042, U.S.A.  
Tel No. (516)328-5600

This Class B digital apparatus complies with Canadian ICES-003.  
Cet appareil numérique de la classe B est conforme à la norme NMB-003 du Canada.

# Safety Warnings

Follow these safeguards and use the equipment properly to prevent injury, death, and material damage.

## Preventing Serious Injury or Death

- To prevent fire, excessive heat, chemical leakage, and explosions, follow the safeguards below:
  - Do not use any batteries, power sources, and accessories not specified in this booklet. Do not use any home-made or modified batteries.
  - Do not short-circuit, disassemble, or modify the battery pack. Do not apply heat or apply solder to the battery pack or back-up battery. Do not expose the battery pack or back-up battery to fire or water. And do not subject the battery pack or back-up battery to strong physical shock.
  - Do not install the battery pack in reversed polarity (+ -).
  - Do not recharge the battery pack outside the allowable ambient temperature range of 0°C - 40°C (32°F - 104°F). Also, do not exceed the recharging time.
  - Do not insert any foreign metallic objects into the electrical contacts of the WFT-E1A, accessories, connecting cables, etc.
- When disposing of a battery pack, insulate the electrical contacts with tape to prevent contact with other metallic objects or batteries. This is to prevent fire or an explosion.
- If excessive heat, smoke, or fumes are emitted during battery pack recharging, immediately unplug the battery charger from the power outlet to stop the recharging and prevent a fire.
- If the battery pack or back-up battery leaks, changes color, deforms, or emits smoke or fumes, remove it immediately. Be careful not to get burned in the process.
- Prevent any battery leakage from contacting your eyes, skin, and clothing. It can cause blindness or skin problems. If the battery leakage contacts your eyes, skin, or clothing, flush the affected area with lots of clean water without rubbing it. See a physician immediately.
- During the recharging, keep the equipment away from the reach of children. The cord can accidentally choke the child or give an electrical shock.
- Do not leave any cords near a heat source. It can deform the cord or melt the insulation and cause a fire or electrical shock.
- When the WFT-E1A is not in use, disconnect the power plug and remove the battery pack. This is to prevent electrical shock, heat generation, and fire.
- Do not use the equipment where there is flammable gas. This is to prevent an explosion or fire.
- If you drop the equipment and the casing breaks open to expose the internal parts, do not touch the internal parts due to the possibility of electrical shock.
- Do not disassemble or modify the equipment. High-voltage internal parts can cause electrical shock.
- Do not store the equipment in dusty or humid places. This is to prevent fire and electrical shock.
- Before using the camera inside an airplane or hospital, check if it is allowed. Electromagnetic waves emitted by the camera may interfere with the plane's instruments or the hospital's medical equipment.
- To prevent fire and electrical shock, follow the safeguards below:
  - Always insert the power plug all the way in.
  - Do not handle a power plug with wet hands.
  - When unplugging a power plug, grasp and pull the plug instead of the cord.
  - Do not scratch, cut, or excessively bend the cord or put a heavy object on the cord. Also do not twist or tie the cords.
  - Do not connect too many power plugs to the same power outlet.
  - Do not use a cord whose insulation has been damaged.
- Occasionally unplug the power plug and use a dry cloth to clean off the dust around the power outlet. If the surrounding is dusty, humid, or oily, the dust on the power outlet may become moist and short-circuit the outlet to cause a fire.
- Be careful not to poke the tip of the antenna into someone's eyes. It can cause visual impairment.

## Preventing Injury or Equipment Damage

- Do not leave equipment inside a car under the hot sun or near a heat source. The equipment may become hot and cause skin burns.
- Do not cover or wrap the battery-recharging apparatus with a cloth. Doing so may trap heat within and cause the casing to deform or catch fire.
- If you drop the camera in water or if water or metal fragments enter inside the camera, promptly remove the battery pack and back-up battery. This is to prevent fire and electrical shock.
- Do not use or leave the battery pack in a hot environment. Doing so may cause battery leakage or a shorter battery life. The battery pack can also become hot and cause skin burns.
- Do not use paint thinner, benzene, or other organic solvents to clean the equipment. Doing so may cause fire or a health hazard.

**If the product does not work properly, requires repair, or is damaged, contact your dealer or your nearest Canon Service Center.**

# Handling Precautions

## Product Care and Storage

- The WFT-E1A is a precision instrument. Do not drop it or subject it to physical shock.
- The WFT-E1A is not waterproof and cannot be used underwater. If it gets wet, detach the battery and promptly consult your nearest Canon Service Center. Wipe off any water droplets with a clean, dry cloth. If the WFT-E1A has been exposed to salty air, wipe with a well-wrung wet cloth.
- Never leave the WFT-E1A near anything having a strong magnetic field such as a magnet or electric motor.
- Do not leave the WFT-E1A in excessive heat such as in a car in direct sunlight. High temperatures can cause the WFT-E1A to malfunction.
- Do not use cleaners that contain organic solvents to clean the WFT-E1A. For stubborn dirt, take the WFT-E1A to a Canon Service Center.
- If the WFT-E1A will not be used for an extended period, remove the battery and store the WFT-E1A in a cool, dry, well-ventilated location.
- Avoid storing the WFT-E1A where there are corrosive chemicals such as a darkroom or chemical lab.

## LCD Panel Care

At low temperatures, the liquid-crystal display response may become slower. And at high temperatures, the display may blacken. In either case, the display will return to normal at room temperature.

## Operation Restrictions

- Use the WFT-E1A only with a compatible EOS digital camera. Using it with an incompatible product may result in malfunction, accident, etc., not covered by the product warranty.
- Use the WFT-E1A only for image transfers via wireless LAN or wired LAN devices. If you use the WFT-E1A for any other purpose, Canon cannot be held liable for any damage or injury that may occur.
- The WFT-E1A can only be used in the following countries: Japan, USA, Canada, France, Italy, Germany, Great Britain, Belgium, the Netherlands, Luxembourg, Ireland, Denmark, Greece, Spain, Portugal, Austria, Finland, Sweden, Poland, Hungary, Czech, Slovakia, Slovenia, Estonia, Latvia, Lithuania, Cyprus, Malta, Iceland, Norway, Switzerland, Australia, and New Zealand.  
For other countries, inquire through Canon's Customer Service Center.
- In France, using the WFT-E1A outdoors is prohibited.
- In Italy, if used outside of own premises, general authorization is required.
- This device may experience signal interference caused by other devices emitting radio waves (microwave ovens, Bluetooth appliances, etc.). Keep the device away from such devices or do not use the devices at the same time.
- The performance of this transmitter is guaranteed only when used with the Canon antenna (NA-E1 or ERA-E1)



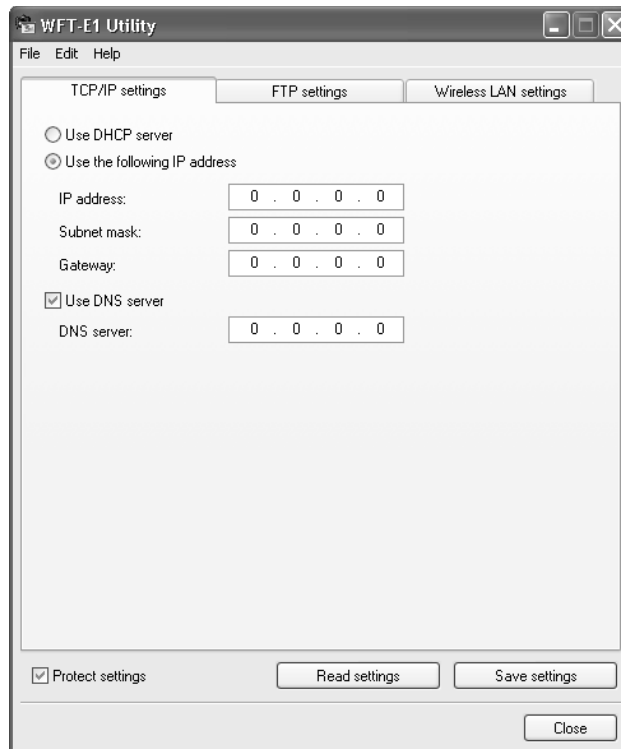
# 1

## Creating the Settings File

First you must create the settings file to enable image transfers from the WFT-E1A to the FTP server or wireless LAN access point (or wireless LAN adapter).

Then you load the settings file in the camera with a memory card. Although this chapter uses Windows XP screenshots, the procedure is the same for Windows 2000 and the Mac OS X.

# TCP/IP Settings



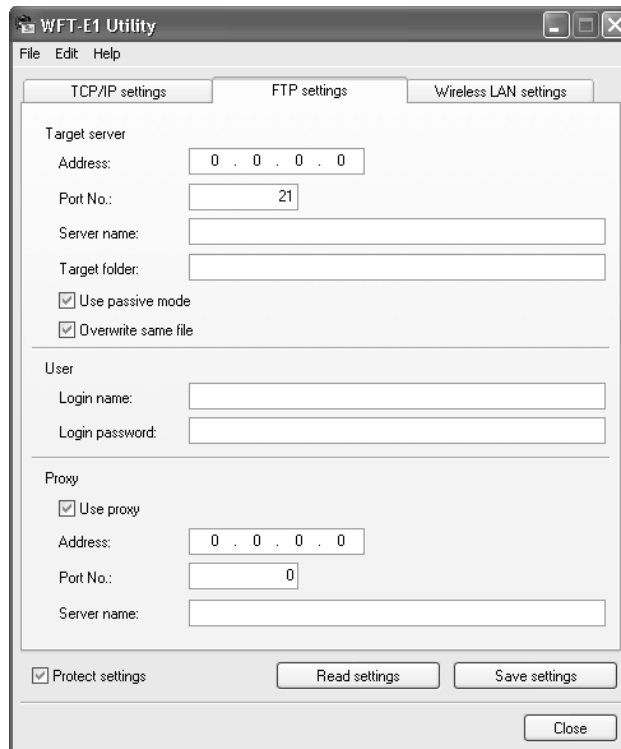
## DHCP Server Setting

- If you will not use a DHCP server, select [**Use below IP address**] and enter the [**IP address**], [**Subnet mask**], and [**Gateway**] text fields.

## DNS Server Setting

- If you will use a DNS server, checkmark the [ **Use DNS server**] box and enter the DNS server address.
- If you use a DHCP server, the DNS server address acquired automatically from the DHCP server will override any other address.

# FTP Settings



## Target Server Settings

- Enter the target FTP server's **[Address]** or **[Server name]** and **[Port No.]**. If you enter both the **[Address]** and **[Server name]**, the **[Address]** will override the **[Server name]**.
- Enter the name of the target FTP server's **[Target folder]**. If this is left blank, the images will be saved in the root folder set by the FTP server. The same DCIM/100EOS1D folder hierarchy as in the memory card will be created automatically. If the camera has two memory card slots and the CF card is selected to save the images, the A/DCIM/100EOS1D folder hierarchy will be created automatically to save the images. If the SD card is selected to save the images, the B/DCIM/100EOS1D folder hierarchy will be created automatically to save the images. (CF card images will be in folder A, while SD card images will be in folder B.)
- If you want to use the passive mode, checkmark the  **Use passive mode** box.
- To allow an image file in the target folder to be overwritten by a file having the same name, checkmark the  **Overwrite same file** box.

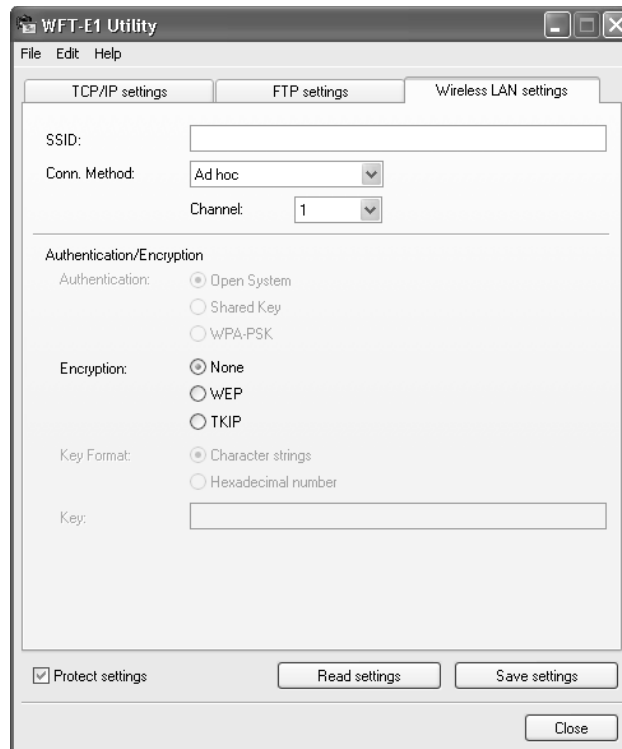
## User Settings

- Enter the **[Login name]** and **[Login password]** required by the FTP server.

## Proxy Settings

- If you will use a proxy, enter the proxy server's **[Address]** or **[Server name]** and **[Port No.]**. If you enter both the **[Address]** and **[Server name]**, the **[Address]** will override the **[Server name]**.

# Wireless LAN Settings



## Basic Settings

### [SSID]

- Enter the SSID (or ESS-ID) that has been set for the wireless LAN access point or wireless LAN adapter. If the wireless LAN access point is set to ANY connection, set the SSID for the wireless LAN access point.

### [Conn. Method]

- Select either [**Infrastructure**] or [**Ad hoc**] for the connection.
- If you will use IEEE 802.11g, select [**Infrastructure**]. [**Ad hoc**] does not enable image transfers.

### [Channel]

- With [**Infrastructure**], the channel is set automatically.
- With [**Ad hoc**], the same channel as for the wireless LAN adapter will be set.

## Authentication and Encryption

Set the [**Authentication**], [**Encryption**], and [**Key Format**] to the same settings as for the wireless LAN access point or wireless LAN adapter.

The possible settings will vary depending on the combination as shown below.

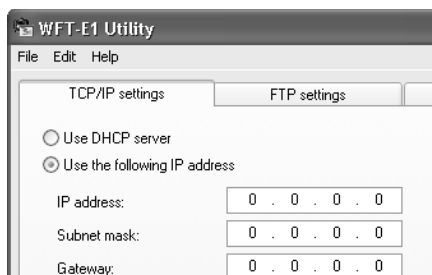
Conn. Method	Authentication	Encryption	
		Encryption Method	Key Format
Infrastructure	Open System	WEP	<ul style="list-style-type: none"> <li>• Enter 10 hexadecimal char.</li> <li>• Enter 26 hexadecimal char.</li> <li>• Enter 5 ASCII characters</li> <li>• Enter 13 ASCII characters</li> </ul>
		None	
	Shared key	WEP	See WEP settings above.
	WPA-PSK	TKIP	<ul style="list-style-type: none"> <li>• Enter 64 hexadecimal char.</li> <li>• Enter 8-63 ASCII characters</li> </ul>
Ad hoc		WEP	See WEP settings above.
		TKIP	See TKIP settings above.
	None		

## Settings Protect

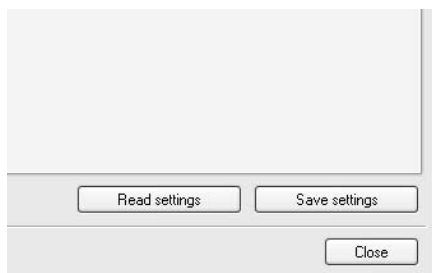
To prevent the camera from changing the LAN settings, put a checkmark. You can also enable/disable the [**Protect settings**] with the camera's menu screen (p.44).

# Saving the Settings

You must now save the settings file to a memory card. Have a memory card on hand to save data.



**1** Select the [TCP/IP] tab.



**2** Click the [Save settings] button.  
→ The Save dialog box will appear.

**3** Save without changing the file name.

- If you save the file with a different file name, the camera will not be able to read the file.
- Select the drive where the memory card is inserted, then open the memory card (in the root directory) and save the file to the memory card.
- To load the settings file into the camera, see page 23.



- Save the settings file while the memory card is open. If you save the file by putting it inside the memory card folder, the camera will not be able to read the file from the memory card.
- Do not save more than one settings file in the memory card. If there are multiple settings files, the camera will not be able to read the file.



By clicking the [**Read settings**] button, you can read the settings file saved in the memory card or hard disk.

# 2

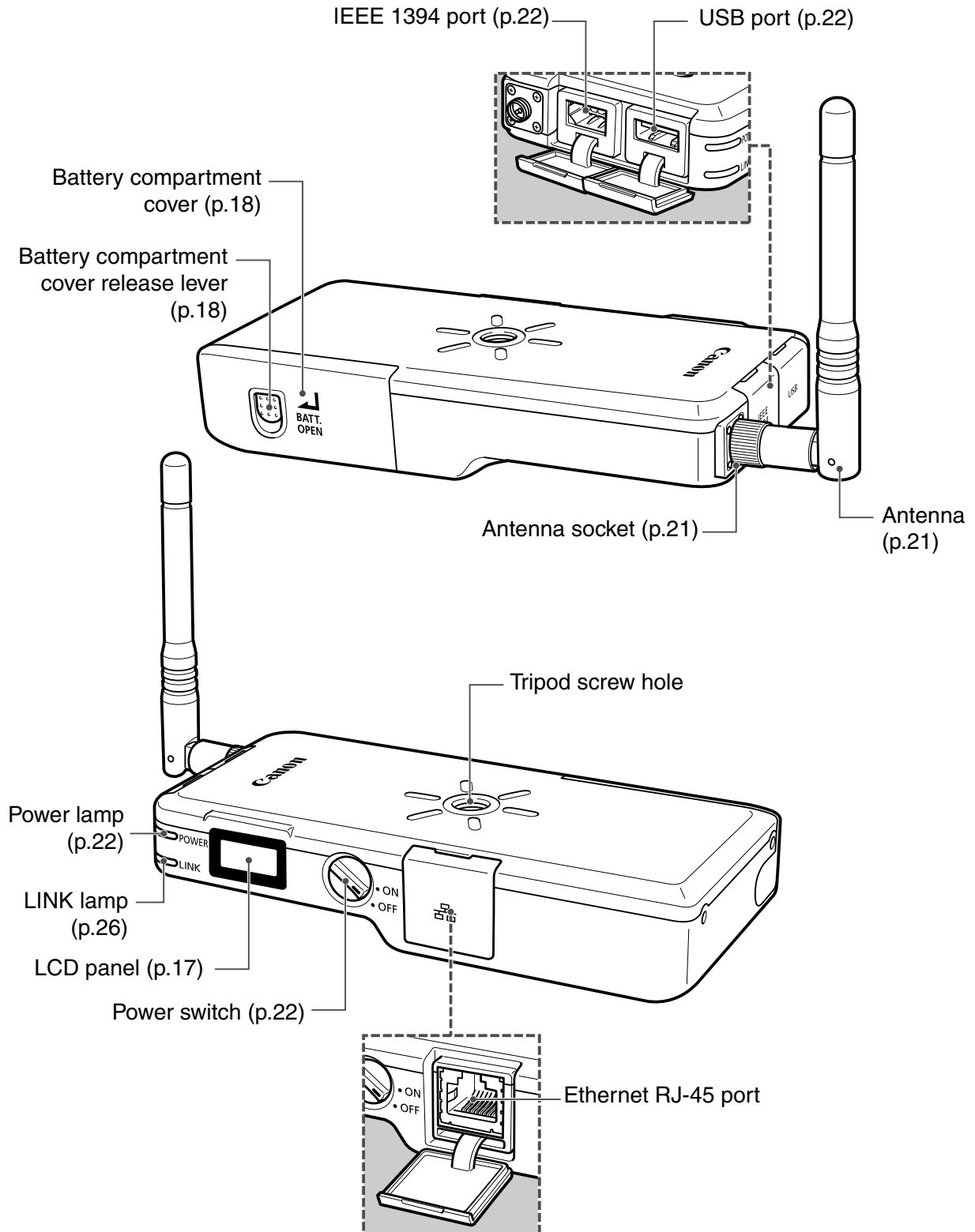
## Setting Up the WFT-E1A

---

This chapter explains the WFT-E1A's nomenclature and preparatory steps for image transfers.

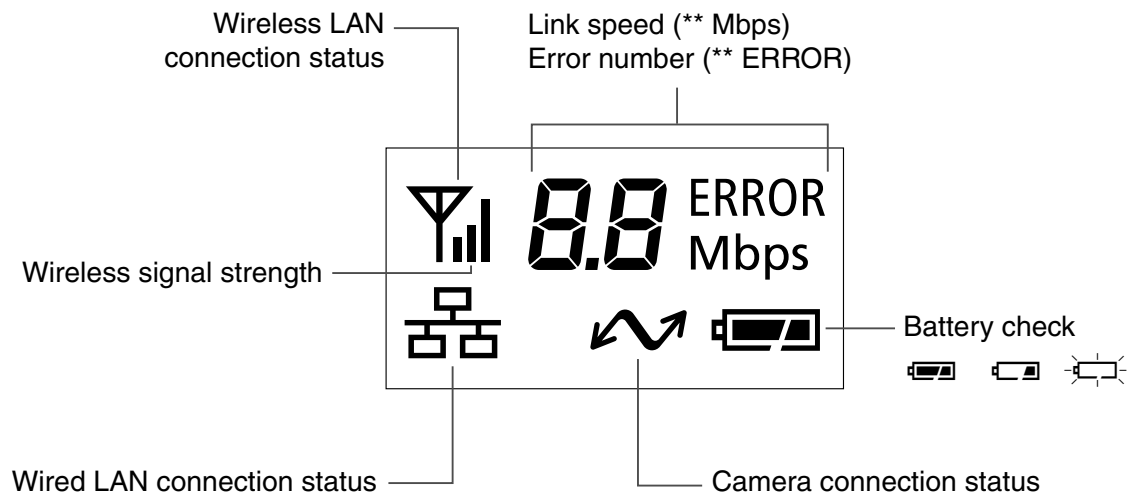
# Nomenclature

For detailed information, reference page numbers are provided in parentheses (p.\*\*).

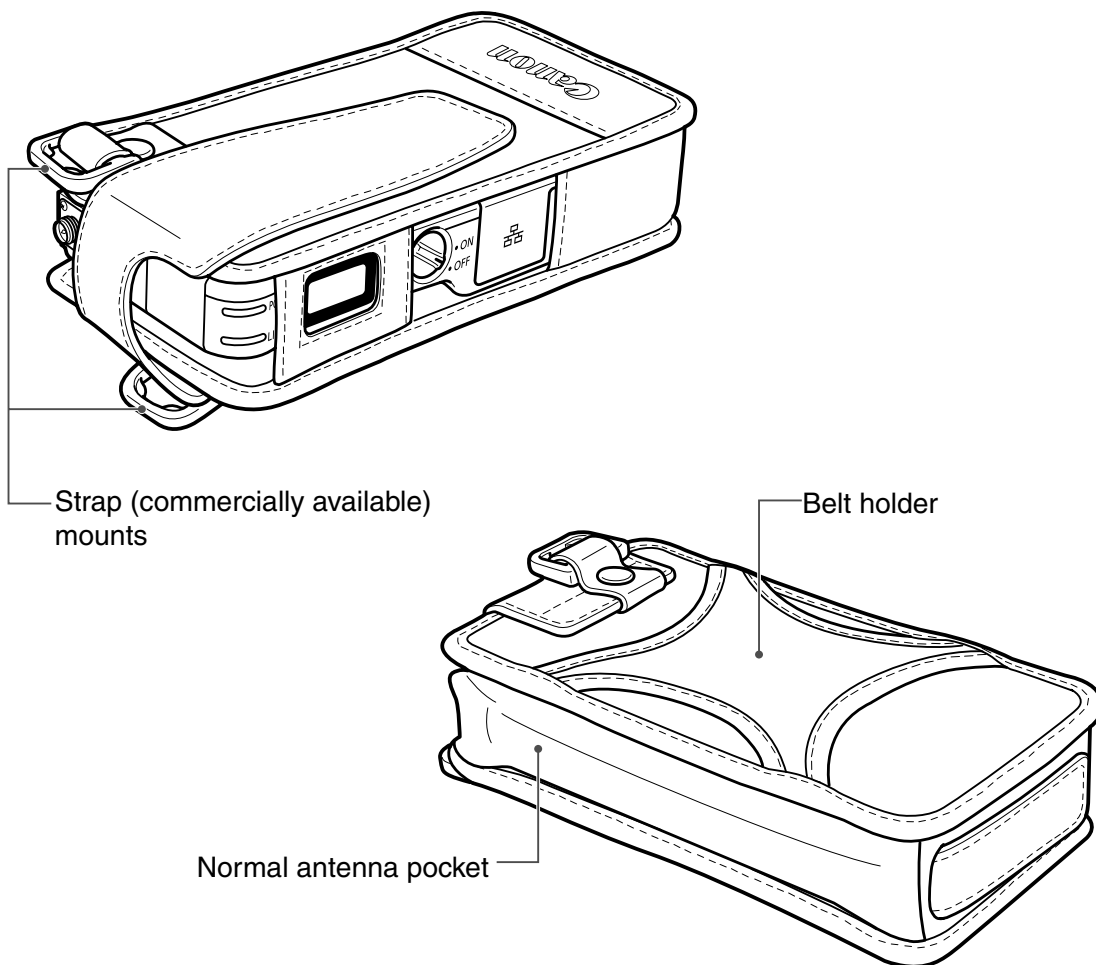




### LCD Panel



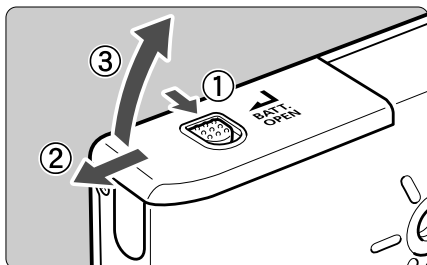
### Case



# Installing and Removing the Battery

The WFT-E1A can be powered by Battery Pack BP-511A, BP-514, BP-511, or BP-512. The battery pack and Battery Charger CB-5L or CG-580 do not come with the WFT-E1A. Purchase them separately if necessary.

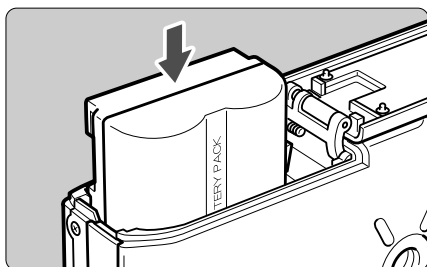
## Installing the Battery



1

### Open the battery compartment cover.

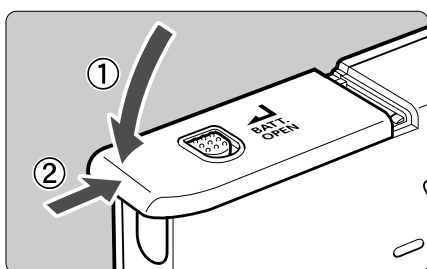
- Push down the release lever and slide the cover to the left.



2

### Insert the battery.

- The battery contacts must face upward. Insert it all the way in until it locks in place.



3

### Close the cover.

- Close the cover, then slide it to the right.

## Checking the Battery Level

When you turn on the power switch (ON), the battery power level is indicated in one of three levels.



 : Battery level OK.

 : Battery level is low.

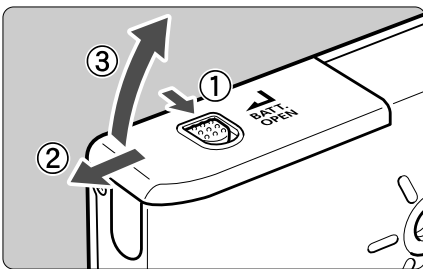
 : Battery must be recharged.

## Battery Life

LAN type	Temperature	Continuous Image Transfer Time [minutes]
Wireless LAN	At 20°C / 68°F	180
	At 0°C / 32°F	120
Ethernet	At 20°C / 68°F	270
	At 0°C / 32°F	180

- The battery life is based on Canon's testing standards. The actual battery life may be shorter than the figures above depending on the operating conditions.

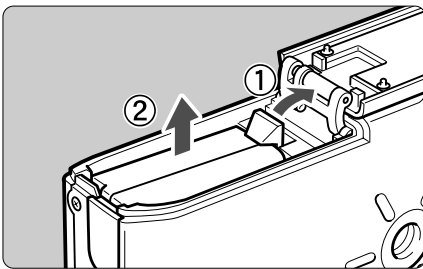
## Removing the Battery



1

### Open the battery compartment cover.

- Push down the release lever and slide the cover to the left.



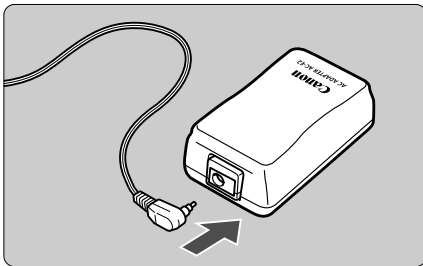
2

### Remove the battery.

- Push the battery lock lever as shown by the arrow to unlock it, then take out the battery.

# Using a Household Power Outlet

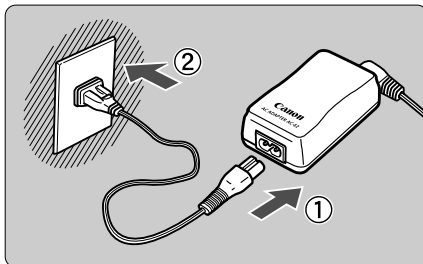
With the AC Adapter Kit ACK-E2 (optional), the WFT-E1A can be powered by a household power outlet.



# 1

## Connect the DC coupler.

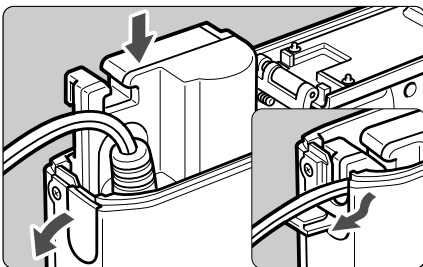
- Connect the DC coupler's plug to the AC adapter's socket.



# 2

## Connect the power cord.


- Connect the power cord to the AC adapter.
- Insert the plug into a power outlet.
- When you are finished, disconnect the plug from the power outlet.



# 3

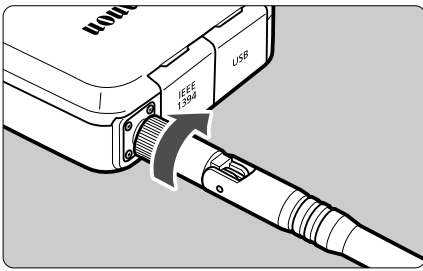
## Insert the DC coupler.

- Open the battery compartment cover and open the DC Coupler cord notch cover.
- Insert the DC Coupler until the lock position and put the cord through the notch.
- Close the cover.

 Be sure to turn off the WFT-E1A's power switch before connecting/disconnecting the power cord.

# Attaching the Antenna

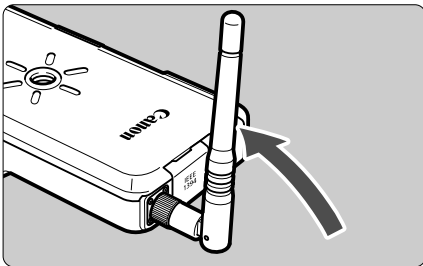
## Attaching the Normal Antenna



1

### Attach the antenna.

- Turn the antenna's base to screw it in.



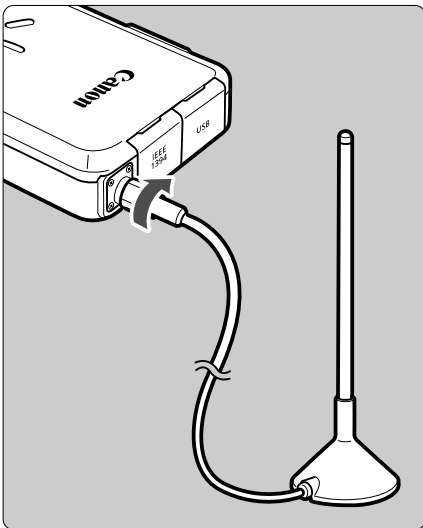
2

### Adjust the antenna's direction.

- To maximize the signal strength for transferring images, set the antenna so that it is perpendicular to the ground.

## Attaching the Extended Range Antenna ERA-E1 (optional)

This is a high-performance antenna useful if the normal antenna is unable to send an adequate signal.



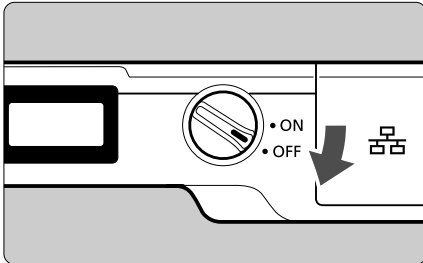
- Turn the antenna cable's base to screw it in.
- The antenna's stand has a tripod socket. Position it so it has a clear line of sight with the wireless LAN access point.
- Before transferring images, position the antenna so that it is perpendicular to the ground to maximize the signal strength.



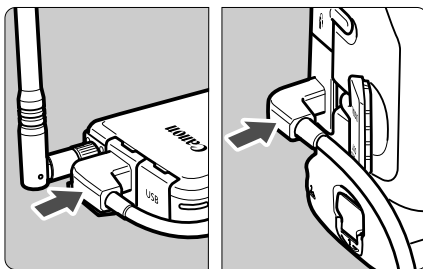
If you use a wired LAN, you need not attach the antenna.

# Attaching to the Camera

The WFT-E1A has an IEEE 1394 port and USB port for connecting to the camera. Use an interface cable that suits your camera or use the interface cable that came with the camera. If you have an EOS-1D-series camera, use the IEEE 1394 port. Images cannot be transferred via the USB port.



**1 Turn off the WFT-E1A and camera.**



**2 Connect the WFT-E1A and camera.**

- Connect the cable plug to the WFT-E1A and camera's <DIGITAL> port.
- Use the 15 cm/0.5 ft cable (water- and dust-resistant) that came with the WFT-E1A when the WFT-E1A is attached to the camera's tripod socket.

**3 Turn on the WFT-E1A and camera.**

- ➔ The WFT-E1A's <POWER> lamp will light and <↻> will be displayed on the WFT-E1A's LCD panel.

## Power Management

To conserve battery power while the WFT-E1A is not being used, three power management levels are provided:

### Power save mode

If you do not use the WFT-E1A for a set period of time, the power save mode takes effect (p.28).

### Standby mode

When the camera turns off, the WFT-E1A enters the standby mode. The standby mode is canceled when the camera turns on again. During the standby mode, only the <🔋> icon is displayed on the WFT-E1A. The <POWER> lamp and <LINK> lamp will be off.

### Auto power off

If the standby mode continues for four hours, the WFT-E1A will turn off. The power turns on again when you set the WFT-E1A's power switch to <OFF>/<ON>.

 Before disconnecting the cable, turn off both the WFT-E1A and camera.



- If the camera has a USB port, connect it with the USB cable that came with the camera.
- If the WFT-E1A's <POWER> lamp blinks, it means that the WFT-E1A and camera are not properly connected. Check the connection.

# Setting the LAN

With the settings file you created in Chapter 2, you will enable the camera to be connected to the LAN.

Although the sample menu screens shown are from the EOS-1Ds Mark II, other EOS digital cameras also use the same menu terminology.

For the menu operation procedure, refer to your camera's instruction manual.

## Loading the Settings File to the Camera

**1** Insert the memory card containing the settings file.

**2** Connect the WFT-E1A and camera and turn on both.

**3** Display the menu screen.

- Select the Setup menu category.

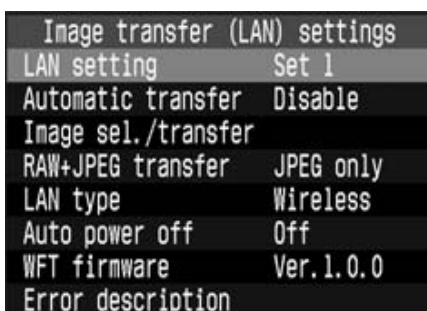
**4** Select [Image transfer (LAN) settings].

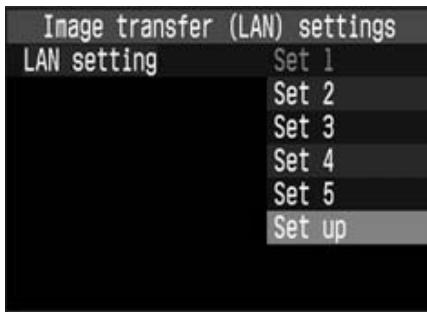
- [Image transfer (LAN) settings] will not be displayed if the WFT-E1A and camera are not connected and turned on.



**5** Select [LAN setting].

- English will be displayed for any language that the WFT-E1A is not compatible with.





**6** Select [Set up].



**7** Select the Set No. of the settings file you want to load.

- You can have up to five settings from [Set 1] to [Set 5].



**8** Select [Load settings].



**9** Select [OK].

- ➔ The settings file will be loaded into the selected Set No.

## Selecting the Settings (Set No.)

Do steps 2 to 5 on page 23.

In step 6, select the Set No. that suits the LAN environment you are using.



# Selecting the LAN Type

Set the image transfer for the wireless LAN or wired LAN.



1

## Select [Image transfer (LAN) settings].

- [Image transfer (LAN) settings] will not be displayed if the WFT-E1A and camera are not connected and turned on.



2

## Select [LAN type].

- English will be displayed for any language that the WFT-E1A is not compatible with.



3

## Select the LAN type to be used.

# Checking the Connection Status

You can check the status of the connection between the WFT-E1A and camera with the WFT-E1A's LCD panel and lamp.

## Checking the Connection Status of the Wireless LAN

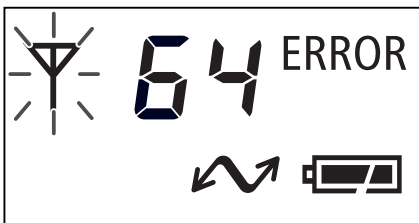
Check the connection right near the wireless LAN access point (or wireless LAN adapter).

### Successful connection display



- The LCD panel, <POWER> lamp, and <LINK> lamp will light.
- The number indicates the link speed.

### Failed connection display



- The LCD panel will show <ERROR> and the error number. The <Y> and <POWER> lamps will also blink.



- The more <Y> bars there are, the more stable the image transfer will be.
- The greater the link speed number, the faster the image transfer will be (the actual image transfer speed will be different).

## Checking the Connection Status of the Wired LAN

First connect the WFT-E1A and FTP server with a LAN cable.

### Successful connection display



- The LCD panel, <POWER> lamp, and <LINK> lamp will light.

### Failed connection display



- The LCD panel will show <ERROR> and the error number. The <Y> and <POWER> lamps will also blink.



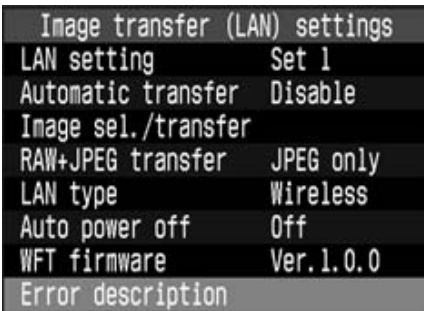
- Use a category 5 or higher LAN cable.
- If you are connecting directly to a personal computer without any router or hub, use a cross cable.

## Identifying an Error No. Displayed on the Display Panel

If an error occurs, follow the procedure below to identify the error (p.48) and take suitable steps to resolve the error. To resolve an error, you must be knowledgeable about the wireless LAN, wired LAN, and FTP server.



**1** Select [Image transfer (LAN) settings].



**2** Select [Error description].



**3** Select the error No. displayed on the LCD panel.

- ➔ The respective error description will be displayed.

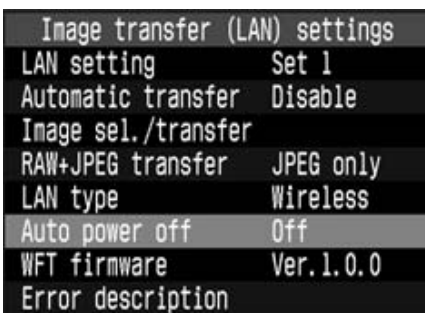
## Setting the Power Save Mode

The WFT-E1A enters the power save mode if do not use the WFT-E1A for a set period of time. When you start shooting again, the power save mode will be canceled automatically and images will be transferred.

During the power save mode, only the <↻> and <🔋> icons will be displayed on the WFT-E1A's display panel. The <LINK> lamp will be off.

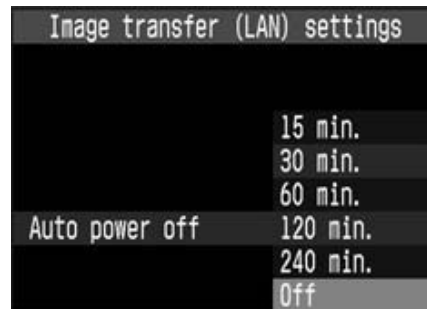


**1** Select [Image transfer (LAN) settings].

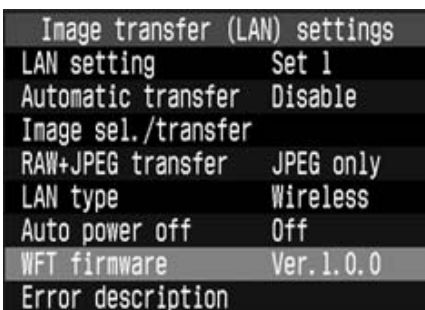


**2** Select [Power saving].

- Select the desired time.



## About [WFT-E1A firmware]



Select this when you want to update the WFT-E1A's firmware. For any new firmware and update procedures, check Canon's Web site.

# 3

## Transferring Images

---

Besides transferring images automatically as you shoot, you can also send images in a batch after shooting.

Also, when you shoot in the RAW+JPEG mode, you can send only the JPEG image or RAW image or both images.

This chapter assumes that the WFT-E1A is already connected to an FTP server.

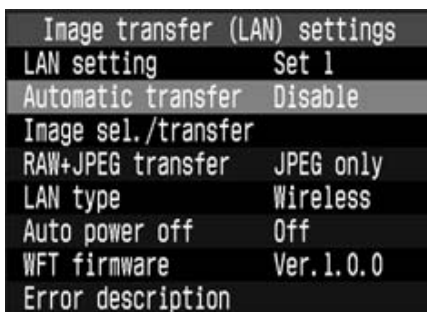
# Automatic Image Transfer After Each Shot

You can transfer the image automatically to an FTP server right after it is taken. You can continue shooting even while an image is being transferred.

Be sure to insert the memory card in the camera when shooting.

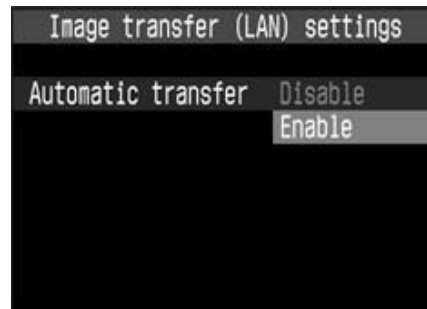


**1** Select [Image transfer (LAN) settings].



**2** Select [Automatic transfer].

- Select [Enable].



**3** Take the picture.

- ➔ The captured image will be transferred to the FTP server.
- During the image transfer, the <LINK> lamp will blink.



- Images cannot be transferred if the memory card is not inserted.
- During the image transfer, do not turn off the camera's power switch. Doing so will interrupt the image transfer. If there is any image whose transfer failed or was interrupted, you can transfer it later in a batch.



- During continuous shooting, the images will be transferred in the order they were captured.
- The captured images will also be stored in the memory card.

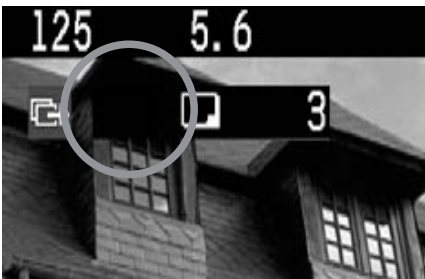
## Checking the Remaining Images to be Transferred and Canceling the Image Transfer



During continuous shooting, you can check how many images are remaining to be transferred. Select [**Image transfer (LAN) settings**] on the menu and the number remaining will be displayed. If you select [**Cancel**], the transferring and transfer standby images will be cancelled.

## Checking the Image Transfer History

If you select [**Select**] with [**Image sel./transfer**], you can check its image transfer history (p.32).



**Image not selected for transfer (No icon)**



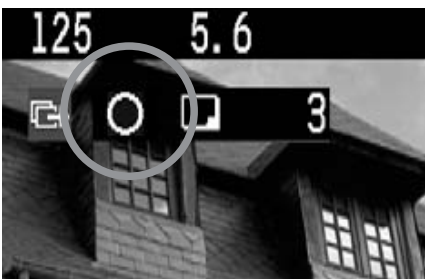
**Images to transfer**

Image selected for transfer



**Images failing transfer**

Image failed to transfer (error)



**Images transferred**

Image transferred successfully

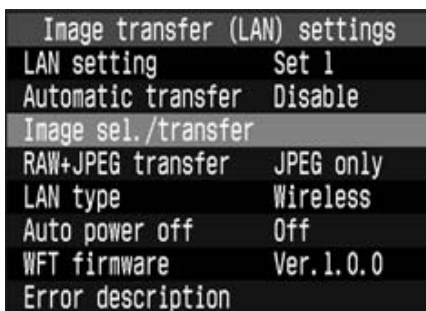
# Image Batch Transfer After Shooting

After you finish shooting, you can select the best images and transfer them in a batch. Or you can send images which have not been transferred or which failed transfer. You can continue shooting even while an image is being transferred.

## Selecting Images to be Transferred



**1** Select [Image transfer (LAN) settings].



**2** Select [Image sel./transfer].

- Select [**Select**].



→ The image will be displayed.



**3** Select the image to be transferred.

- Select the image in the same way as for image playback.
- When using a camera with <SELECT> button, turn the <⌚> while holding down the <SELECT> button to display <✓> on the upper left of the image to be transferred. When using a camera with <SET> button, press the <SET> button to display <✓> on the upper left of the image to be transferred. You can select up to 9999 images.
- After selecting the images to be transferred, press the <MENU> button.





## 4 Transfer the images.

- Select [**Transfer**].
- During the image transfer, the <LINK> lamp will blink.

**!** During the image transfer, do not turn off the camera's power switch. Doing so will interrupt the image transfer.



- In step 3, if you set it to the index display, three thumbnail images will be displayed. To return to the normal view, magnify the image view.
- See page 31 for "Checking the Remaining Images to be Transferred and Canceling the Image Transfer."

## Checking the Image Transfer History for a Folder or Memory Card

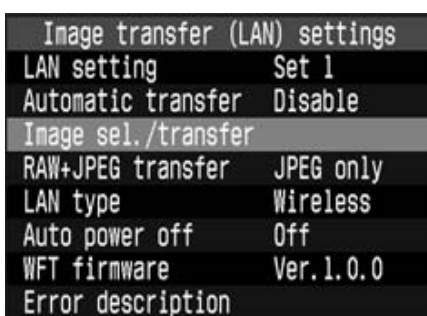


With the left screen displayed in step 2, you can check the number of images to be transferred as well as the image transfer history like the number of images in the selected folder or card that failed to transfer or that completed the transfer.

## Transferring Images in a Batch



**1** Select [Image transfer (LAN) settings].



**2** Select [Image sel./transfer].

- Select [All].



**3** Select the desired option.

- You can select the images in a folder or memory card which have not been transferred or which failed the transfer.
- If your camera cannot select folders, the folder options will not appear.

### About [Folder...]

- You can select “images not transferred” or “images failed transfer” in the selected folder.


### About [Card...]

- You can select “images not transferred” or “images failed transfer” in the selected memory card.
- After selecting the desired option, press the <MENU> button.



## 4 Transfer the images.

- Select [**Transfer**].
- During the image transfer, the <LINK> lamp will blink.

 During the image transfer, do not turn off the camera's power switch. Doing so will interrupt the image transfer.



- See page 31 for “Checking the Remaining Images to be Transferred and Canceling the Image Transfer.”
- If you select [**Clear transfer history**], the status of all the images in the folder or memory card will be set to “not transferred.” Then you can resend all the images in the folder or memory card by selecting [**Images not transferred**].

## Menu Operation During Image Transfer

You can use the menu even during image transfers. However, the following menu operations cannot be done during image transfers since it may interfere with the image transfer (your camera might not have all these operations):

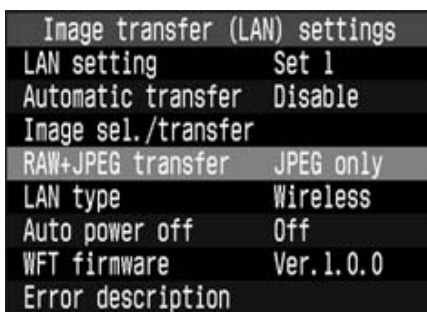
- Protect images • Rotate • Erase • Print Order • Format
- Firmware • Sensor cleaning
- Save camera settings • Loading camera setting

# Transferring RAW+JPEG Images

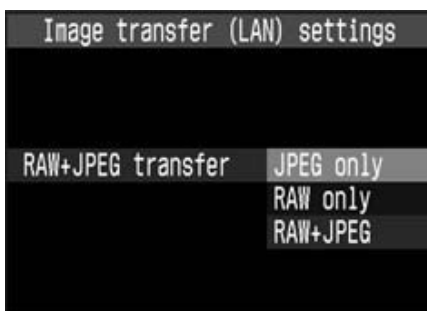
For RAW+JPEG images, you can select which image format to transfer. This option is convenient when you want to first send only the JPEG images that have a smaller file size.



**1** Select [Image transfer (LAN) settings].



**2** Select [RAW+JPEG transfer].



**3** Select the desired option.

# 4

## Changing the LAN Settings with the Camera

The settings file loaded in the camera can be modified using the menu screen. (Some settings cannot be modified depending on the camera.)

However, using the camera to modify the settings file may be cumbersome due to the settings being deep in the menu hierarchy. Using the software explained in Chapter 2 is recommended to modify the settings file.

This chapter explains the menu structure centering on the menu options that appear on the menu screens.

# Setting TCP/IP

## DHCP Server

[Image transfer (LAN) settings] → [LAN setting] → [Set up] → [TCP/IP] → [DHCP server]: Select Use or No use.

## IP Address

[Image transfer (LAN) settings] → [LAN setting] → [Set up] → [TCP/IP] → [IP address]: Enter number

- Enter the number in the same way as for the [Date/Time].

## Subnet Mask

[Image transfer (LAN) settings] → [LAN setting] → [Set up] → [TCP/IP] → [Subnet mask]: Enter the number.

- Enter the number in the same way as for the [Date/Time].

## Gateway

[Image transfer (LAN) settings] → [LAN setting] → [Set up] → [TCP/IP] → [Gateway]: Enter the number.

- Enter the number in the same way as for the [Date/Time].

# Setting the DNS Server

## DNS Server

[Image transfer (LAN) settings] → [LAN setting] → [Set up] → [DNS server] → [DNS server]: Select Use or No use.

## Address

[Image transfer (LAN) settings] → [LAN setting] → [Set up] → [DNS server] →

[Address]: Enter the number.

- Enter the number if you use a DNS server.
- Enter the number in the same way as for the [Date/Time].

# Setting the FTP Server

## Target Server

### [Server name]

[Image transfer (LAN) settings] → [LAN setting] → [Set up] → [FTP server] → [Target server] → [Server name]: Enter server name or address.

### [Port No.]

[Image transfer (LAN) settings] → [LAN setting] → [Set up] → [FTP server] → [Target server] → [Port No.]: Enter a number less than 65535.

## Virtual Keyboard Operation



You can enter the server name using the following method.

### With EOS-1D-Series Cameras

#### Moving the cursor:

Hold down the <Q> button and turn the <DIAL> dial.

#### Deleting a character in the entry field:

Press the <DEL> button and the cursor will delete the character on its left.

#### Selecting a keyboard character and entering it:

Hold down the <SELECT> button and turn the <DIAL> dial to select a character. When you let go of the button, the character will be entered at the cursor's position.

#### Exiting the entry screen:

Press the <MENU> button. The entries will be registered and the previous screen will reappear.

#### Canceling the entry:

Press the <CANCEL> button and no changes will be made to the entry. The previous screen will reappear.



### With Cameras Other than EOS-1D-Series

#### Switching between the entry field and keyboard:

Press the <JUMP> button to switch between the entry field and keyboard.

#### Moving the cursor in the entry field:

Turn the <◂> dial.

#### Deleting a character in the entry field:

Press the <←> button and the cursor will delete the character on its left.

#### Selecting a keyboard character and entering it:

Turn the <◂> dial to select a character. Press the <SET> button to enter the character at the cursor's position.

#### Exiting the entry screen:

Press the <MENU> button. The entries will be registered and the previous screen will reappear.

#### Canceling the entry:

Press the <INFO.> button and no changes will be made to the entry. The previous screen will reappear.

### Login name

[Image transfer (LAN) settings] → [LAN setting] → [Set up] → [FTP server] → [Login name]: Enter your login name.

### Login password

[Image transfer (LAN) settings] → [LAN setting] → [Set up] → [FTP server] → [Login password]: Enter your login password.

### Target folder

[Image transfer (LAN) settings] → [LAN setting] → [Set up] → [FTP server] → [Target folder]: Enter the save folder.

## Passive Mode

[Image transfer (LAN) settings] → [LAN setting] → [Set up] → [FTP server] → [Passive mode]: Select Use or No use.

## Proxy

### [Proxy]

[Image transfer (LAN) settings] → [LAN setting] → [Set up] → [FTP server] → [Proxy] → [Proxy]: Select Use or No use.

### [Address]

[Image transfer (LAN) settings] → [LAN setting] → [Set up] → [FTP server] → [Proxy] → [Address]: Enter number

- Enter the number in the same way as for the [Date/Time].

### [Port No.]

[Image transfer (LAN) settings] → [LAN setting] → [Set up] → [FTP server] → [Proxy] → [Port No.]: Enter a number less than 65535.

## Overwrite Same File

[Image transfer (LAN) settings] → [LAN setting] → [Set up] → [FTP server] → [Overwrite same file]: Select Yes or No.

# Setting Wireless LAN

## SSID

[Image transfer (LAN) settings] → [LAN setting] → [Set up] → [Wireless LAN] → [SSID]: Enter the SSID.

## Advanced settings

You can set the connection method, authentication method, encryption, etc.

[Image transfer (LAN) settings] → [LAN setting] → [Set up] → [Wireless LAN] → [Advanced settings]: If you enter the settings for the wireless LAN access point (or wireless LAN adapter), the following screens will be displayed automatically.

The settings which can be set will vary automatically depending on the configuration.



## MAC Address

[Image transfer (LAN) settings] → [LAN setting] → [Set up] → [Wireless LAN] → [MAC address]: The MAC address will be displayed

# Protecting and Saving the Settings ■

## Protect Settings

[Image transfer (LAN) settings] → [LAN setting] → [Set up] → [Protect settings]:  
Select On or Off.

- Select [**On**] to prevent the LAN settings from being modified inadvertently.
- Select [**Off**] if you want to change the LAN settings with the camera.

## Save Settings

[Image transfer (LAN) settings] → [LAN setting] → [Set up] → [Save settings] →  
[OK]: The settings will be saved in the memory card.

5

# Reference

---

# Troubleshooting Guide

If you think there is a problem with the WFT-E1A, first read the probable causes below. Also read the troubleshooting section in your camera's instruction manual.

## Software

### The software does not startup.

- **Your personal computer does not meet the software's operating requirements.**  
➔ Use a personal computer that meets the software's operating requirements.

## Power Source

### The <POWER> lamp does not turn on when you turn on the <⊖> switch.

- **The battery is exhausted.**  
➔ Recharge the battery.
- **The battery is not installed properly.**  
➔ Install the battery properly (p.18).

### The battery becomes exhausted quickly.

- **The battery is not fully charged.**  
➔ Recharge the battery fully.
- **The battery's service life has ended.**  
➔ Replace the battery with a new one.

### The power turns off by itself.

- **Auto power off is in effect.**  
➔ Turn on the <⊖> switch again or disable the auto power off function (p.28).

### <⊖> blinks on the LCD panel.

- **The battery is almost exhausted.**  
➔ Recharge the battery.

## Menu Functions

### LAN menu options do not appear.

- **The WFT-E1A is not connected to the camera and both are not turned on.**
- ➔ The LAN menu options will appear only if the WFT-E1A is connected to the camera and both are turned on (p.23).

### LAN menu options are in English.

- **You selected an interface language not compatible with LAN menus.**
- ➔ English will be displayed for languages not compatible with the LAN menus (p.25).

## LAN Functions

### The <POWER> lamp blinks and images cannot be transferred.

- **The WFT-E1A is not securely connected to the camera.**
- ➔ Check whether the cable is securely connected to the WFT-E1A and camera (p.22).
- **The WFT-E1A is connected to the EOS-1D-series camera with a USB cable.**
- ➔ To connect an EOS-1D-series to the WFT-E1A (p.22), use an IEEE 1394 cable.

### Although there is no <ERROR> displayed, images cannot be transferred.

- **The correct [LAN type] setting (wireless LAN/wired LAN) in the menu has not been selected.**
- ➔ Set the correct LAN type (p.25).
- **You are trying to connect to the IEEE 802.11g wireless LAN access point via ad hoc.**
- ➔ For the wireless LAN setting, set it to infrastructure instead (p.12).

# Error Number Description

If there is a problem with the LAN connection, one of the error numbers below will be displayed on the WFT-E1A's display panel. You can also check the error number with the camera's menu screen (p.27).

Error Number	Description
01	Problem with camera cable connection
21	No address assigned by DHCP server
22	No response from DNS server
23	Duplicate IP address
24	No response from proxy server
25	Other terminal has set the same IP address
41	Cannot connect to FTP server
42	FTP server rejected connection
43	Cannot connect to FTP server. Error code received from server.
44	Cannot disconnect FTP server. Error code received from server.
45	Cannot login to FTP server. Error code received from server.
46	For the data session, error code received from FTP server
47	Image file transfer completion not confirmed by FTP server
61	Same SSID wireless LAN terminal not found
62	No response from wireless LAN terminal
63	Wireless LAN authentication failed
64	Cannot connect to wireless LAN terminal
65	Wireless LAN connection lost
81	Wired LAN connection lost



# Specifications

## • Type

Type: Image transfer accessory compatible with IEEE 802.11b/IEEE 802.11g wireless LAN and Ethernet

## • Wireless LAN

Standards Compliance: ARIB STD-T66 (data transmission system)

IEEE 802.11b/IEEE 802.11g (wireless LAN standard protocol)

Transmission Method: DS-SS modulation (IEEE 802.11b), OFDM modulation (IEEE 802.11g), half duplex

Transmission range: 60 m / 197 ft (with normal antenna)

150 m / 492 ft (with extended range antenna)

\* Link speed IEEE 802.11b: 1 Mbps, IEEE 802.11g: 6 Mbps

\* With no obstructions between the transmitting and receiving antennas and no radio interference.

\* With the high-performance, large antenna attached to the wireless LAN access point.

Transmission frequency: 2412 MHz - 2462 MHz (Central frequency, total 11 channels)

Link speed: 1/2/5.5/6/9/11/12/18/24/36/48/54 Mbps

Connection method: Infrastructure or ad hoc (IEEE 802.11b only)

Security: Authentication method: Open, shared key, WPA-PSK  
Encryption: WEP, TKIP

Current consumption: During standby: Max. 70 mA (7.4 V)

During transfer: Max. 450 mA (7.4 V)

Power consumption: Max. approx. 3.5 W

## • Wired LAN

Standards Compliance: IEEE 802.3u (Ethernet 100BASE-TX)

## • Interface

Camera connection: IEEE 1394 port (6-pin), USB 2.0 port (Type A)

Personal computer connection: RJ-45 for Ethernet

## • Power Source

Battery: Battery Pack BP-511A/514/511/512

AC power: AC Adapter Kit ACK-E2

## • Dimensions and Weight

Dimensions (W x H x D): 140 x 26.3 x 65 mm / 5.5 x 1.0 x 2.6 in

Weight: Approx. 165 g / 5.82 oz (including normal antenna, excluding battery)

## • Operating Environment

Working temperature range: 0°C - 45°C / 32°F - 113°F

Working humidity: 85% or less

## • Extended Range Antenna ERA-E1 (optional)

Max. diameter x length: 60 x 191 mm / 2.36 x 7.52 in

Weight: Approx. 100 g / 3.53 oz

Cable length: 1.5 m / 4.92 ft

- All the specifications above are based on Canon's testing standards.
- The camera's specifications and physical appearance are subject to change without notice.

# Index

## A

AC Adapter .....	20
Ad hoc .....	2, 12, 13
Address .....	11, 39, 42
Advanced settings .....	43
Antenna .....	16, 21
ANY connection .....	12
ASCII .....	13
Authentication .....	13
Automatic transfer .....	30

## B

Battery .....	18
Battery Charger .....	18
Battery check .....	18
Battery Life .....	19

## C

Camera connection status .....	17
Cancel .....	31
Case .....	17
Channel .....	12
Clear transfer history .....	35
Conn. Method .....	12

## D

DHCP Server .....	10, 38
DNS Server .....	10, 39

## E

Encryption .....	13
Error .....	27, 48
Error description .....	27
Error number .....	17, 26
Ethernet .....	2
Ethernet RJ-45 port .....	16
Extended Range Antenna .....	21

## F

Firmware .....	28
FTP .....	11
FTP Server .....	2, 40

## G

Gateway .....	10, 38
---------------	--------

## H

Hexadecimal .....	13
-------------------	----

## I

IEEE 1394 port .....	16, 22
IEEE 802.11g .....	12
Image not selected for transfer .....	31
Image sel./transfer .....	31, 32, 34
Image Transfer History .....	31, 33
Images failing transfer .....	31, 32, 33, 34
Images not transferred .....	32, 34
Images to transfer .....	31
Images transferred .....	31, 33
Infrastructure .....	2, 12, 13
IP Address .....	10, 38

## K

Key Format .....	13
------------------	----

## L

LAN setting .....	23
LAN type .....	25
LCD Panel .....	16, 17
LINK lamp .....	16, 26
Link speed .....	17, 26
Load settings .....	24
Login name .....	11, 41
Login password .....	11, 41

## M

MAC Address .....	43
Menu Operation .....	35

## N

Normal Antenna .....	21
----------------------	----

## O

Open System .....	13
Overwrite Same File .....	11, 42

**P**

Passive Mode ..... 11, 42  
 Port No. .... 11, 40, 42  
 Power lamp..... 16, 26  
 Power switch ..... 16, 22  
 Protect Settings ..... 13, 44  
 Proxy ..... 11, 42

**R**

RAW+JPEG Images .....36  
 Read settings..... 14

**S**

Save Settings ..... 14, 44  
 Select.....31  
 Server name ..... 11, 40  
 Settings File ..... 9, 14, 23  
 Shared key ..... 13  
 SSID ..... 12, 43  
 Subnet Mask..... 10, 38

**T**

Target folder ..... 11, 41  
 Target Server..... 11, 40  
 TCP/IP ..... 10, 38  
 TKIP..... 13  
 Transfer .....33  
 Transferring Images in a Batch ..... 32, 34

**U**

USB port..... 16, 22

**V**

Virtual Keyboard .....40

**W**

WEP ..... 13  
 Wired LAN connection status .....17  
 Wireless LAN..... 12  
 Wireless LAN access point.....2  
 Wireless LAN adapter.....2  
 Wireless LAN connection status ..... 17

Wireless signal strength..... 17  
 WPA-PSK ..... 13



**CANON INC.** 30-2, Shimomaruko 3-chome, Ohta-ku, Tokyo 146-8501, Japan

**U.S.A. ————— CANON U.S.A. INC.**

For all inquiries concerning this camera, call toll free in the U.S.  
1-800-OK-CANON or write to: Customer Relations, Canon U.S.A., Inc.  
One Canon Plaza, Lake Success, N.Y. 11042-1198

**CANADA ————— CANON CANADA INC. HEADQUARTERS**

6390 Dixie Road, Mississauga, Ontario L5T 1P7, Canada

**CANON CANADA INC. MONTREAL BRANCH**

5990, Côte-de-Liesse, Montréal Québec H4T 1V7, Canada 1010

**CANON CANADA INC. CALGARY OFFICE**

2828, 16th Street, N.E. Calgary, Alberta T2E 7K7, Canada

For all inquiries concerning this camera, call toll free in Canada

1-800-OK-CANON

**EUROPE, ————— CANON EUROPA N.V.**

**AFRICA &** Bovenkerkerweg 59-61, P.O. Box 2262, 1180 EG Amstelveen, The Netherlands

**MIDDLE EAST CANON COMMUNICATION & IMAGE FRANCE S.A.**

102, Avenue du Général de Gaulle 92257 La Garenne-Colombes Cedex, France

**CANON UK LTD.**

Woodhatch Reigate Surrey RH2 8BF, United Kingdom

**CANON DEUTSCHLAND GmbH**

Europark Fichtenhain A10, 47807 Krefeld, Germany

**CANON ITALIA S.p.A.**

Via Milano 8 I-20097 San Donato Milanese, Milano, Italy

**CANON Schweiz AG**

Geschäftsbereich Wiederverkauf, Industriestrasse 12, CH-8305 Dietlikon,  
Switzerland

**CANON G. m. b. H.**

Oberlaaerstrasse 233, 4th floor, 1100 Wien, Austria

**CANON España, S. A.**

C/Joaquín Costa, 41, 28002 Madrid, Spain

**SEQUE Soc. Nac. de Equip., Lda.,**

Praça da Alegria, 58, 2º, 1269-149 Lisboa, Portugal

**CENTRAL & ————— CANON LATIN AMERICA, INC. DEPTO DE VENTAS**

**SOUTH AMERICA** 703 Waterford Way Suite 400 Miami, FL 33126 U.S.A.

**CANON LATIN AMERICA, INC. CENTRO DE SERVICIO Y REPARACION**

Apartado 2019, Zona Libre de Colón, República de Panamá

**ASIA ————— CANON HONGKONG CO., LTD.**

9/F, The Hong Kong Club Building, 3A Chater Road, Central, Hong Kong

**CANON SINGAPORE PTE. LTD.**

79 Anson Road #09-01/06 Singapore 079906

**OCEANIA ————— CANON AUSTRALIA PTY. LTD.**

1 Thomas Holt Drive, North Ryde, N.S.W. 2113, Australia

**CANON NEW ZEALAND LTD.**

Akoranga Business Park, Akoranga Drive, Northcote, Auckland, New Zealand

**JAPAN ————— CANON SALES CO., INC.**

16-6, Kohnan 2-chome, Minato-ku, Tokyo 108-8011, Japan

This Instruction Manual booklet is current as of September 2004. For information on using the WFT-E1A with accessories introduced after this date, contact your nearest Canon Service Center.