

Canon

Exif Print


BUBBLE JET
DIRECT


PictBridge


Wi-Fi[®]
CERTIFIED

Photo Printer

PIXMA iP4000R

Setup Guide



Exif Print

This printer supports ExifPrint.

Exif Print is a standard for enhancing the communication between digital cameras and printers. By connecting to an Exif Print-compliant digital camera, the camera's image data at the time of shooting is used and optimized, yielding extremely high quality prints.

Canadian Radio Interference Regulations

This digital apparatus does not exceed the Class B limits for radio noise emissions from a digital apparatus as set out in the interference-causing equipment standard entitled "Digital Apparatus," ICES-003 of the Industry Canada.

Cet appareil numérique respecte les limites de bruits radioélectriques applicables aux appareils numériques de Classe B prescrites dans la norme sur le matériel brouilleur NMB-003 d'Industrie Canada intitulée « Appareils numériques ».

International ENERGY STAR® Program

As an ENERGY STAR® Partner, Canon Inc. has determined that this product meets the ENERGY STAR guidelines for efficiency.



The International ENERGY STAR® Office Equipment Program is a global program that promotes energy saving through the use of computer and other office equipment. The program backs the development and dissemination of products with functions that effectively reduce energy consumption. It is an open system in which business can participate voluntarily. The targeted products are office equipment such as computers, monitors, printers, faxes and copiers. Their standards and logos are uniform among participating nations.

Power Requirements

Never use a power supply voltage other than that supplied in the country of purchase. Using the incorrect voltage could cause a fire or electric shock. The correct power supply voltages and frequencies are as follows:

AC 110-120V, 50-60Hz
AC 220-240V, 50-60Hz

Conformity declaration for R&TTE

We, Canon hereby declare that this equipment (printer) PIXMA iP4000R is in compliance with the essential requirements and other relevant provisions of Directive 1999/5/EC.

FCC Radiation Exposure Statement

This equipment complies with FCC radiation exposure limits set forth for uncontrolled equipment. This equipment should be installed and operated with minimum distance at least 20cm between the radiator and persons body (excluding extremities: hands, wrists, feet and legs) and must not be co-located or operated with any other antenna or transmitter.

Table of Contents

Preface	2
Introduction	2
Setup Outline	3
Shipping Materials	4
Confirming Your Connection Type	5
Connecting over Wireless LAN via an Access Point	6
Connecting over Wired LAN	7
Connecting with USB Connection	7
Using both USB Cable and Wireless LAN Connections	8
Using both USB Cable and Wired LAN Connections	8
Setting Up	9
Installing the Print Head	9
Installing the Ink Tanks	12
Loading Paper	14
Confirming the Setup Procedure	15
Using the Printer for the First Time	15
Using the Printer Already Connected to a Network	15
Setting Up the Printer and the Computer	16
Before Setup	16
First-time Setup for Use over Wireless LAN	19
First-time Setup for Use over Wired LAN	31
Setting Up for Use with USB Connection	39
Setting Up an Additional Computer to Use a Printer Already Connected to a Network	45
Aligning the Print Head	51
Basic Operations	55
Printing with Windows	55
Printing with Macintosh	58
Print Head Maintenance	60
Appendix	62
Printing Photographs Directly from a Digital Camera	62
Notes on Handling the USB Interface (for Windows Users)	67
Printing and Initializing Network Settings	67
For Further Details	68
Troubleshooting	70

Preface

Introduction

Thank you for purchasing a Canon Bubble Jet Printer.

This Setup Guide uses the following symbols to indicate important information. Always observe the instructions indicated by these symbols.

Warning

Instructions that, if ignored, could result in death or serious personal injury caused by incorrect operation of the equipment. These must be observed for safe operation.

Caution

Instructions that, if ignored, could result in personal injury or material damage caused by incorrect operation of the equipment. These must be observed for safe operation.

Also read the Safety Precautions in the *User's Guide*. Observe the warnings and cautions to avoid personal injury or damage to the printer.

Trademark Notices

- Canon is a registered trademark of Canon Inc.
- BJ is a trademark of Canon Inc.
- PIXMA is a trademark of Canon Inc.
- Microsoft® and Windows® are registered trademarks of Microsoft Corporation in the U.S. and other countries.
- Microsoft® Windows® XP, Microsoft® Windows® 2000, Microsoft® Windows® Millennium Edition, and Microsoft® Windows® 98 are expressed respectively as Windows XP, Windows 2000, Windows Me, and Windows 98 in this *Setup Guide*.
- Apple, Mac, and Macintosh are trademarks of Apple Computer, Inc., registered in the U.S. and other countries.
- Wi-Fi is a registered trademark of the Wi-Fi Alliance.
- Wi-Fi CERTIFIED is a certification mark of the Wi-Fi Alliance.
- All other trademarks and registered trademarks appearing in this *Setup Guide* are the property of their respective owners.

Copyright ©2004 CANON INC.

All rights reserved. No part of this publication may be transmitted or copied in any form whatsoever without the express written permission.

Setup Outline

Follow the steps below to start using the printer.

Step 1

Check the supplied material. (see page 4)

Make sure the supplied items are included.

Step 2

Confirm the type of your connection. (see page 5)

There are several ways to connect the printer and your computer.
Decide on a connection type that matches your network setup.

Step 3

Set the printer. (see page 9)

Place the printer and install the print head and the ink tanks.

Step 4

Confirm setup procedure. (see page 15)

Setup procedure differs depending on the type of your connection.
Make sure you know which setup procedure to perform.

Step 5

Set up the printer and the computer. (see page 16)

Install the driver to use the printer and the software to connect it to a network.

Setup complete

The printer is now ready for use.

Shipping Materials

Check that all the following items are in the box. If anything is missing or is damaged, contact your Canon Service Representative.

- Printer
- Setup Software & User's Guide CD-ROM
- Setup Guide
- Print Head
- 5 Ink Tanks
- USB cable

To use the printer over wireless LAN, you need an access point. To use the printer over wired LAN, you need an ethernet cable (and a hub, if you are connecting multiple computers). Purchase them separately as necessary.

Confirming Your Connection Type

If your printer is connected to a network, it can be shared by multiple computers.

This printer can be used over wireless or wired LAN, as well as with USB connection.

Connection type available for this printer are as follows.

- wireless LAN via an access point (see page 6)
- wired LAN (see page 7)
- USB connection (see page 7)
- combination of USB connection and wireless LAN (see page 8)
- combination of USB connection and wired LAN (see page 8)

To connect to the printer in a certain connection type, it must be available to your computer network setup in the first place. Before starting setup, make sure you know the type of connection available to your computer, and decide on a connection type for your printer.

➔ **Note**

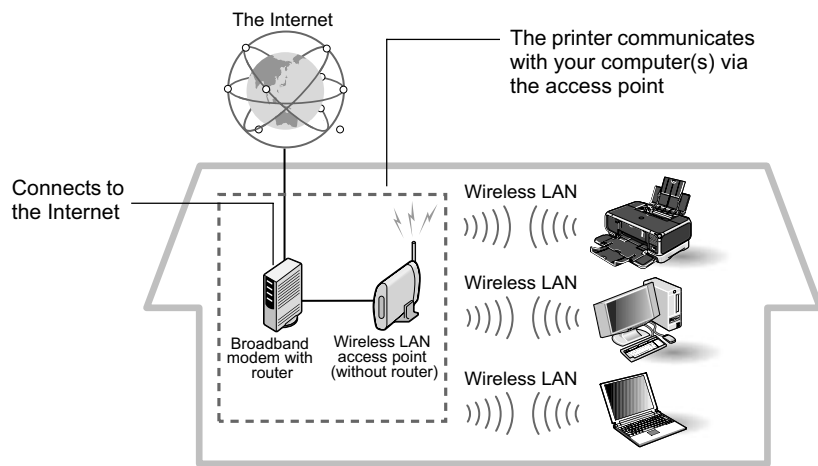
Refer to the manuals of your network devices for necessary information. In an office setup, consult your network administrator.

Connecting over Wireless LAN via an Access Point

Your computer communicates with the printer via an access point (the infrastructure mode). To share the printer among multiple computers, connect them to the access point.

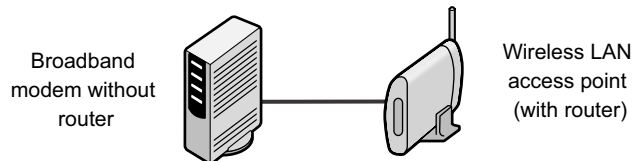
Important

- When using this printer in a wireless LAN setup, use the infrastructure mode. It does not support the ad-hoc mode.
- An access point is needed to set up the infrastructure mode.
- If you connect to a network that is not protected with security measures, there is a risk of disclosing data such as your personal information to a third party.



Notes

- A wireless LAN card or adapter must be installed in your computer to connect your computer to the wireless LAN.
- A variant is the wireless LAN setup shown below, where your wireless LAN access point has the router function, instead of your Internet connection device, such as a broadband modem. The type of device in use in your network may vary. Refer to the manual of your device for details.

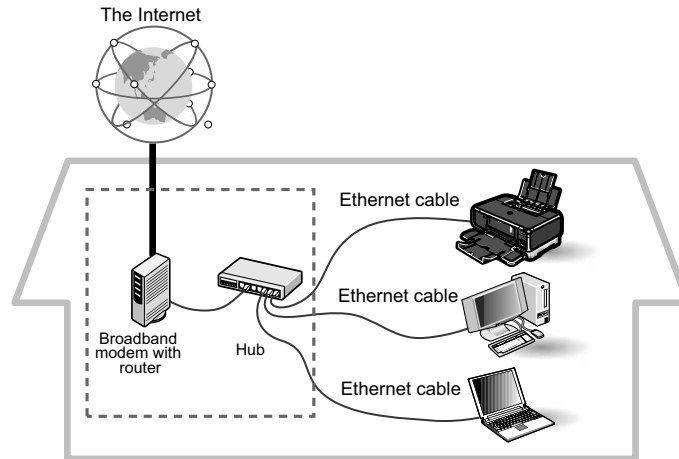


- The printer and the router need to be in the same network.

To set up the printer for use over wireless LAN, see “First-time Setup for Use over Wireless LAN” on page 19 after you finished setting the printer.

Connecting over Wired LAN

Your computer communicates with the printer via an Ethernet network.



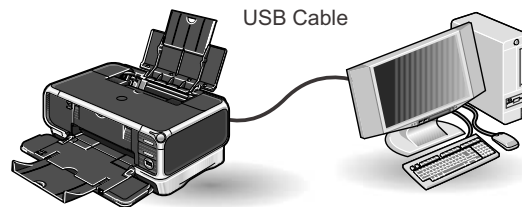
To set up the printer for use over wired LAN, see “First-time Setup for Use over Wired LAN” on page 31 after you finished setting the printer.

↳ Note

Your hub may have the router function. The type of device in use in your network may vary. Refer to the manual of your device for details.

Connecting with USB Connection

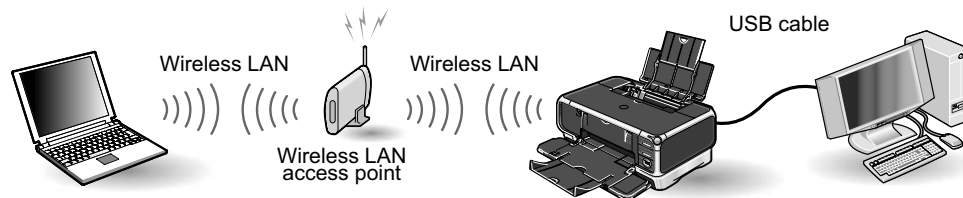
Your computer communicates with the printer via a USB cable.



To set up the printer for use with USB connection, see “Setting Up for Use with USB Connection” on page 39 after you finished setting the printer.

Using both USB Cable and Wireless LAN Connections

A computer communicates directly with the printer with a USB cable, while other computers are connected over a wireless LAN (infrastructure mode).



➔ Note

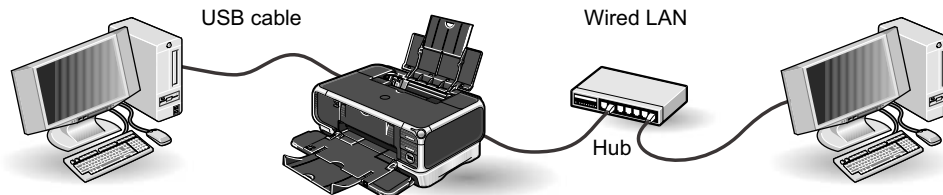
A wireless LAN card or adapter must be installed in your computer to connect your computer to the wireless LAN.

You need to perform setup both on the computer to be used with USB connection and on the computers to be used over wireless LAN.

To set up the printer in this configuration, see “First-time Setup for Use over Wireless LAN” on page 19 and “Setting Up for Use with USB Connection” on page 39 after you finished setting the printer.

Using both USB Cable and Wired LAN Connections

A computer communicates directly with the printer with a USB cable, while other computers are connected over wired LAN.



➔ Note

To connect over wired LAN, your computer needs to be connected to a hub or a similar network device.

You need to perform setup both on the computer to be used with USB connection and on the computers to be used over wired LAN.

To set up the printer in this configuration, see “First-time Setup for Use over Wired LAN” on page 31 and “Setting Up for Use with USB Connection” on page 39 after you finished setting the printer.

Important

To use this printer over wired and wireless LAN at the same time, the wired and wireless networks need to be physically separate, and the printer needs to be assigned a different network address for each network. Since this requires advanced network knowledge, we recommend that you do not use the printer with wired and wireless LAN at the same time.

Setting Up

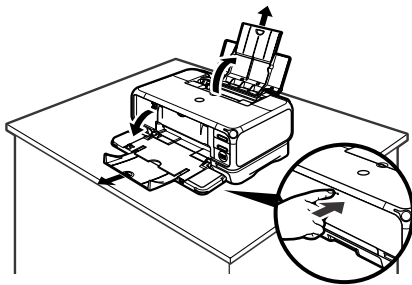
Installing the Print Head

Warning

- Never attempt to plug the power cord into the power outlet or unplug the power cord when your hands are wet.
- Never damage, modify, stretch, or excessively bend or twist the power cord. Do not place heavy objects on the power cord.
- Never use any power supply other than the standard power supply available in the country of purchase. Using the incorrect voltage and frequency could cause a fire or electric shock.
- Always push the plug all the way into the power outlet.

↳ Note

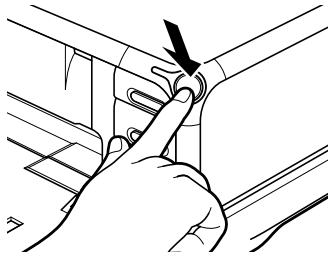
If you do not intend to use the printer for a long period of time, unplug the power cord from the power outlet after turning off the printer.



- 1** Place the printer on a flat surface.

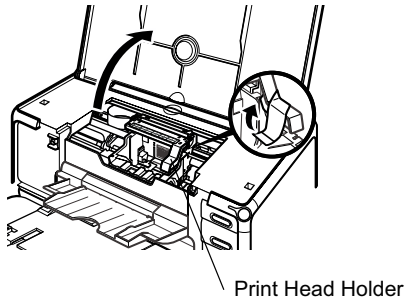
↳ Note

Even though wireless communication between different rooms or floors is possible, the radio status may become poor. Do not place the printer where its communication with the access point may be blocked.



- 2** Plug the printer in.
- 3** Turn on the printer. Do NOT turn on the computer yet.

The POWER lamp flashes and the printer begins to operate. Wait until the POWER lamp remains fully lit.



- 4 Open the Paper Output Tray and Top Cover, and then pull down the Inner Cover.

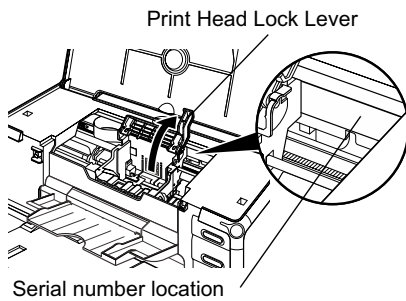
Important

The Print Head Holder moves to the center when the Top Cover is opened. Be careful not to touch it while it is moving.

Push the upper center (⊙ ⊙ ⊙) of the Front Cover to open the Paper Output Tray.

→ **Note**

Support the Front Cover with your hand when opening the tray.



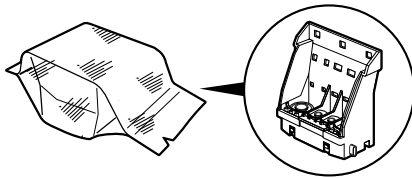
- 5 Remove the tape.
- 6 Raise the Print Head Lock Lever.

Do not touch internal parts other than the Print Head Lock Lever.

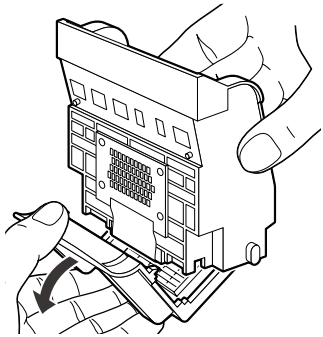
→ **Note**

For the customers in the United States

Write down the serial number located to the right of the print head holder. You will need this later to register the product.



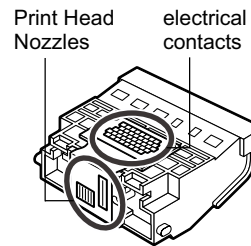
- 7 Remove the print head from its package.



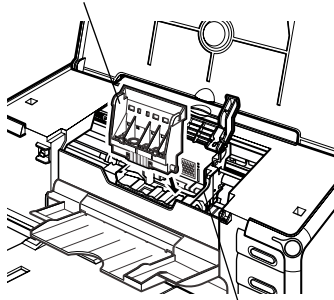
8 Remove the protective cap from the Print Head.

→ **Notes**

- Do not touch the Print Head Nozzles or electrical contacts.
- Do not attempt to reattach the protective cap once it has been removed.



Print Head



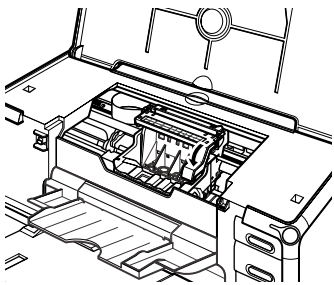
Print Head Holder

9 Place the Print Head in the holder.

The print head will rest at a slight angle.

→ **Note**

Be careful not to touch any parts inside the printer.



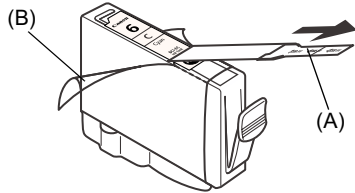
10 Lock the Print Head into place by lowering the lever.

Do not touch the lever once the Print Head has been installed.

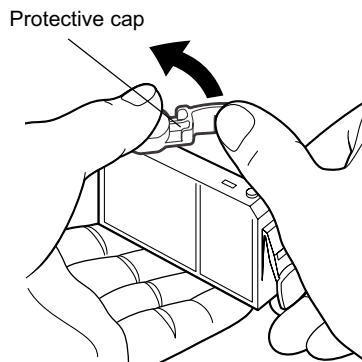
Installing the Ink Tanks

⚠ Caution

- For safety reasons, store ink tanks out of the reach of small children.
- Do not drop or shake ink tanks as this may cause the ink to leak out and stain your clothes and hands.
- Be sure to remove the clear film from the ink tank in the exact order as shown in step 2.



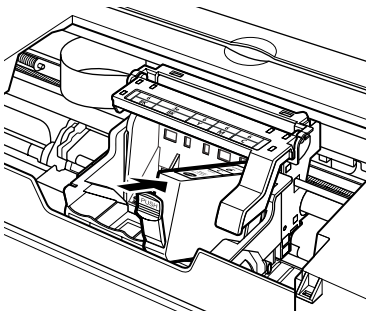
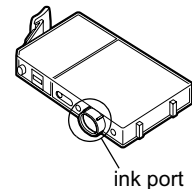
- 1** Unpack the cyan ink tank.
- 2** Pull the orange tape (A) off in the direction of the arrow and remove the clear film. Then, remove the film (B).



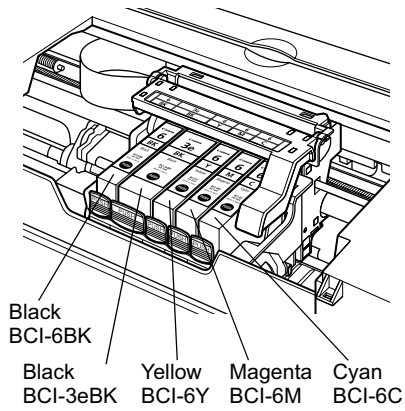
- 3** Hold the ink tank as shown in the diagram and remove the orange protective cap.

→ Notes

- Do not squeeze the side of ink tanks as this may cause the ink to leak out and stain your clothes and hands.
- Do not touch the open ink port.
- Do not reattach the protective cap once you have removed it.



- 4** Insert the cyan ink tank into the right-hand slot. Press the **PUSH** mark on the ink tank until it clicks into place.



5 Use the same procedure to install the other ink tanks into their appropriate slots.

Check the labels to make sure that each tank is in the correct position.

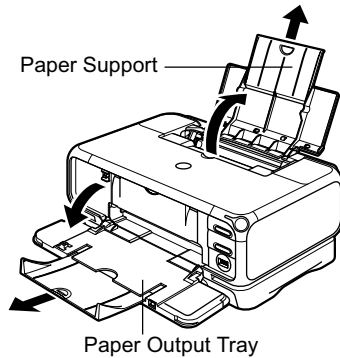
→ **Notes**

- Only install the ink tanks in the positions specified by the labels.
- If ink tanks are not installed in the right position, colors will not be printed correctly. Immediately reinstall the tank in the correct position and carry out Print Head Cleaning. For details, refer to the *User's Guide*.

6 Put back the Inner Cover and close the Top Cover.

Loading Paper

This section describes how to load paper in the Sheet Feeder. When performing the print head alignment, you need to load paper in the Sheet Feeder.

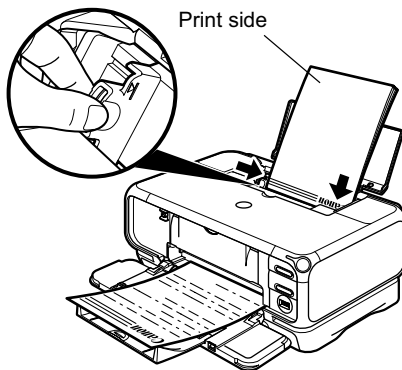


- 1** Pull out the Paper Support and Paper Output Tray completely as shown.

Push the upper center (⊙ ⊙ ⊙) of the Front Cover to open the Paper Output Tray.

➔ **Note**

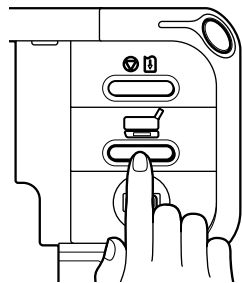
Support the Paper Output Tray with your hand when opening the tray.



- 2** Load the paper and align it with the right side of the Sheet Feeder.

You can load up to 150 sheets of plain paper (64 gsm/17 lb). Do not exceed this limit.

- 3** Slide the paper guide against the left side of the paper stack.



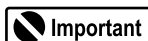
- 4** Ensure that the Sheet Feeder lamp is lit. If not, press the Paper Feed Switch.

➔ **Notes**

- Other than the Sheet Feeder, you can load paper in the Cassette. For information on loading the print media in the Cassette, refer to the *User's Guide*.
 - You can select the paper source also from the printer driver. For details, refer to the *User's Guide*.
-

Confirming the Setup Procedure

Along with the various types of connection this printer is capable of (see “Confirming Your Connection Type” on page 5), necessary setup procedure also differs with whether you are setting up the printer for the first time or if the printer is already set up and you are adding new computers to use the printer.



- Before proceeding to setup, make sure to read and follow directions in “Before Setup” on page 16.
- If you are using wireless LAN, see “Confirming Settings of your Access Point” on page 18 and make a note of the access point settings.

Using the Printer for the First Time

When the printer is set up for the first time, the printer itself needs to be set up to be used over a network, as well as the computer that uses it. Refer to the setup procedure for your connection type.

- Connecting over Wireless LAN (Infrastructure Mode)
See “First-time Setup for Use over Wireless LAN - Windows” on page 19 or “First-time Setup for Use over Wireless LAN - Macintosh” on page 25. Before setup, make sure that your computer’s connection with the access point is operational.
- Connecting over Wired LAN
See “First-time Setup for Use over Wired LAN - Windows” on page 31 or “First-time Setup for Use over Wired LAN - Macintosh” on page 35. Before setup, make sure that your computer’s connection via the network is operational.
- Connecting with USB
See “Setting Up for Use with USB Connection - Windows” on page 39 or “Setting Up for Use with USB Connection - Macintosh” on page 42.

Using the Printer Already Connected to a Network

If the printer is already set up to be shared over a network and you are adding a computer to use it, the new computer needs to be set up but the printer itself does not need to be set up again.

See “Setting Up an Additional Computer to Use a Printer Already Connected to a Network - Windows” on page 45 or “Setting Up an Additional Computer to Use a Printer Already Connected to a Network - Macintosh” on page 48. Before setup, make sure that your computer’s connection with the network is operational.

Setting Up the Printer and the Computer

Before Setup

Make sure of the following before proceeding to installation.

- Disable virus detection or any other resident programs.
- Make sure you are connected to the Internet through your LAN. To confirm this, see if you can browse the web.
- If MAC address filtering or IP address filtering is set to the access point or the router to connect to, disable it.
- To find out the MAC address of your printer, print the network settings information. To print the network setting information, see “Printing and Initializing Network Settings” on page 67.
- If you connect to a network that is not protected with security measures, there is a risk of disclosing data such as your personal information to a third party.

↳ Note

For details on the SSID, WEP key, WPA key, MAC address filtering, or IP address filtering of the access point, refer to its manual. See “Confirming Settings of your Access Point” on page 18 and make a note of the access point settings.

- Disable the firewall of any security software until the setup is complete. For details on firewalls, see “On Firewalls” on page 17.
- If you are using wireless LAN connection, make sure that the computer and the access point is set up properly and wireless communication is possible.
- If you are using wireless LAN connection, make sure you know the name of the network you are using (SSID).
- If you are using wireless LAN connection, and a WEP key or a WPA key is set to the access point, make sure you know the WEP or the WPA key.
- If you are using wired LAN, make sure that your computer and network devices such as hubs are set up properly so that communication is possible through the wired LAN.
- When the printer is already shared over a network and you are adding a computer to use it, disable the printer’s access control features if it is enabled.

■ For Windows

- When using Windows XP, you must log on as the administrator. When using Windows 2000, you must log on as a member of the administrators group. Do not switch users during setup.
- If the following screen appears automatically, click **Cancel** to quit the screen, turn off the printer, remove the USB cable, then resume setup. Re-insert the *Setup Software & User's Guide* CD-ROM.



If you are using Windows XP Service Pack 1 or earlier and you have Internet Connection Firewall enabled, a dialog box asking you for confirmation to disable the firewall will appear during setup. Click **Yes** to disable the firewall. When setup is complete, the firewall will be re-enabled automatically.

To confirm the version of your Windows XP, see “Confirming the version of Windows XP” on page 82.

For details on firewalls, see “On Firewalls” on page 17.

➔ **Note**

Some programs, such as network configuration software, may automatically enable Internet Connection Firewall. Check settings of any such program.

■ On Firewalls

A firewall is a system that prevents unauthorized access to a local network from the outside.

However, a firewall may prevent proper setup or wireless communication of the printer. When setting up the printer for a use over a network, disable the firewall of your security software.

➔ **Note**

For information on the firewall feature of your security software, refer to its manual. In an office setup, consult your network administrator.

■ Confirming Settings of your Access Point

When setting up the printer to be used over wireless LAN, the printer's network settings are configured to match those of the access point. Therefore, if you are using wireless LAN, we recommend that you confirm the necessary information on the access point before entering the setup process. Check and fill in the table below.

SSID/network name		
Stealth/closed network	<input type="checkbox"/> Disabled	<input type="checkbox"/> Enabled
ANY-Rejection	<input type="checkbox"/> Disabled	<input type="checkbox"/> Enabled
Radio channel	Channel () The printer can communicate in channels 1 to 11.	
Encryption	<input type="checkbox"/> Disabled	<input type="checkbox"/> Enabled <input type="checkbox"/> WEP: key () <input type="checkbox"/> WPA: key () This printer supports only the PSK-TKIP authentication type.
MAC address filtering	<input type="checkbox"/> Disabled	<input type="checkbox"/> Enabled
IP address filtering	<input type="checkbox"/> Disabled	<input type="checkbox"/> Enabled
Client-to-Client Blocking	<input type="checkbox"/> Disabled	<input type="checkbox"/> Enabled

➔ **Note**

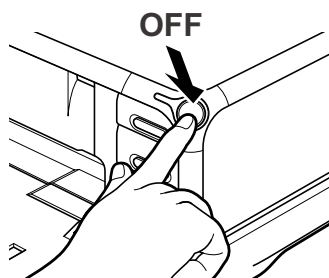
For information on how to confirm the settings of the access point, refer to the manual provided with the access point.

- If Stealth (closed network) or ANY-Rejection feature is enabled
We recommend you to disable it before entering setup.
- If MAC address filtering is enabled
We recommend that you register the printer's MAC address to the access point before entering setup. To confirm the MAC address of the printer, print the printer's network information. See "Printing Network Setting Information" on page 67.
- If IP address filtering is enabled
Disable the access point's IP address filtering feature before entering setup.
- If Client-to-Client Blocking is enabled
An access point may be capable of blocking all direct transmission among clients associated to it. If such feature is enabled, disable this feature before entering setup.

First-time Setup for Use over Wireless LAN

When you are setting up the printer to be used over wireless LAN (infrastructure mode) for the first time, the printer is set up to be used over a network, as well as the computer that uses it. Follow these steps.

■ First-time Setup for Use over Wireless LAN - Windows



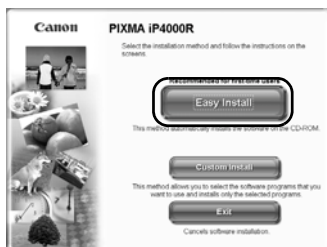
- 1 Ensure that the printer and the computer are turned off.
- 2 Turn on the computer and start Windows. If any applications automatically run, quit them.

Do NOT turn the printer on at this stage.

- 3 Place the *Setup Software & User's Guide* CD-ROM in the CD-ROM drive.

↳ Note

- If the CD-ROM does not run automatically, click **Start** and select **My Computer**, then double-click the CD-ROM icon. For non-XP Windows, double-click **My Computer** in the Windows screen, then double-click the CD-ROM icon.
- If the language selection screen appears, select the language, then click **OK**.
- If the location selection message appears, select your place of residence, then click **Next**.



- 4 Follow the instructions displayed on screen. When the screen shown on the left is displayed, click **Easy Install**.

↳ Note

When you select **Easy Install**, the items included in the CD-ROM are installed automatically. To select particular items to install, click **Custom Install** and follow the instruction on the screen.



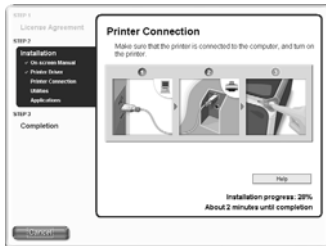
- 5 When the list of applications to install appears, verify the contents, click **Install**, then follow the instructions on the screen.



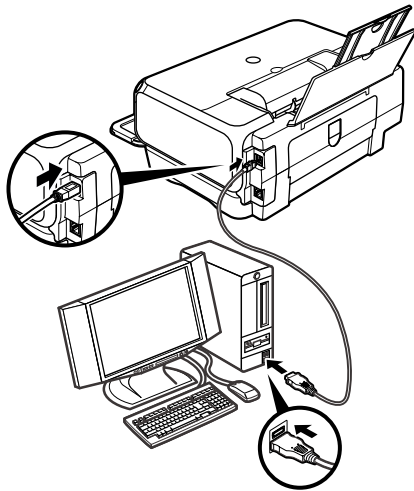
6 Read the **License Agreement** carefully and click **Yes**.

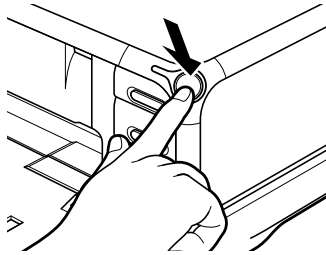


7 Select **Set up the printer and the computer** and click **Next**.



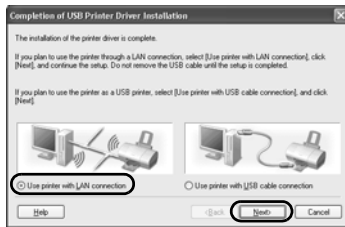
8 When the screen shown on the left appears, connect the printer with a USB cable.



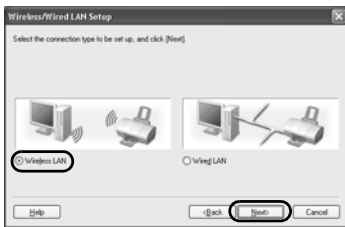


9 Turn on the printer.

If the printer is recognized, the next screen will appear automatically. If the connection is not recognized, click **Help** and follow its instructions.



10 Select **Use printer with LAN connection** and click **Next**.



11 Select **Wireless LAN** and click **Next**.

↳ **Note**

If the printer's network settings have been set before, the **Printer Network Setup** dialog box is displayed. For details, see “The Printer Network Setup dialog box is displayed during setup” in “Troubleshooting” on page 79.

12 Setup automatically detects your access point.

Important

If you connect to a network that is not protected with security measures, there is a risk of disclosing data such as your personal information to a third party.

- ❑ An access point is detected automatically and setup proceeds to the next step when
 - Setup detects an access point with the same SSID as the access point currently connected to your computer, and the access point is not using encryption.
 - Setup did not detect an access point with the same SSID as the access point currently connected to your computer (or your computer is currently not connected to an access point in the first place), but a single access point without encryption was detected.

- ❑ If the detected access point is using encryption
 - When setup detects an access point with the same SSID as the access point currently connected to your computer, and the access point is using encryption (WEP or WPA), the **Access Points** dialog box is displayed with the access point highlighted in the list.

Enter the network key (WEP key or WPA key) set to the access point and click **Connect**.

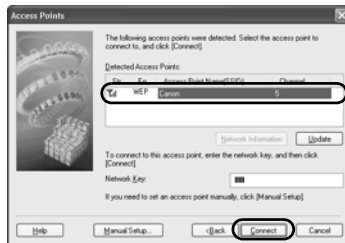
- ❑ If multiple access points were detected
 - If setup did not detect an access point with the same SSID as the access point currently connected to your computer (or your computer is currently not connected to an access point in the first place), and two or more access points were detected, the **Access Points** dialog box is displayed.

Select your target access point and click **Connect**.

If **WEP** or **WPA** is displayed in the **Encryption** column, a network key (WEP or WPA key) is set to your access point. Enter the network key (WEP key or WPA key) set to the access point and click **Connect**.

Important

You cannot connect to an access point using WPA-802.1x or an access point using WPA-PSK with type of dynamic encryption set to AES. See “The Access Points dialog box is displayed during setup” on page 72.



→ Notes

- If the **Encryption** column is blank, the access point is not encrypted.
 - For details, see “The Access Points dialog box is displayed during setup” in “Troubleshooting” on page 72.
 - For details on the access point’s SSID and network key (WEP key or WPA key) setting, refer to the manual provided with the access point.
-

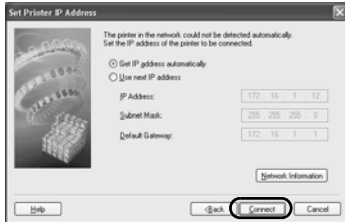
- If no access points were detected, or your target access point is not displayed

If the **An access point could not be detected** message appears, click **OK** to display the **Access Points** dialog box. Click **Update** to perform detection again. If your access point is still not listed, take the following measures.

- Ensure that the access point is on and then click **Update**.
- Ensure that the printer is on and connected to your computer with a USB cable, then click **Update**.
- Move your printer closer to the access point and remove possible obstructions, then click **Update**.
- If all above fails, use manual searching. For details, see “The target access point is not detected, or you want to specify access point settings manually” in “Troubleshooting” on page 74.
- Using your access point’s utility software, check if your access point is set to the stealth mode, i.e., set not to broadcast its SSID, or is set to reject clients whose SSID is set to ANY. If so, click **Manual Setup** and enter the access point’s SSID in **SSID**.

13 Setup automatically detects the printer.

The iP4000R connected with a USB cable is detected automatically.

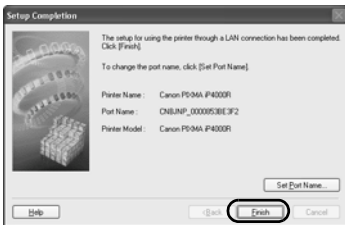


If the printer was not detected, the **Set Printer IP Address** dialog box appears. Click **Connect** to retry detection. If the printer is still not detected, take the following measures.

- Ensure that the printer is on and connected to your computer with a USB cable, then click **Connect**.
- Move your printer closer to the access point and remove possible obstructions, then click **Connect**.
- Ensure that the computer's connection with the access point is operational, then click **Connect**.
- If all above fails, use manual searching. To confirm the IP address, click **Network Information** in the **Set Printer IP Address** dialog box. For details, see "The Set Printer IP Address / Printer IP Address Setup dialog box is displayed during setup" in "Troubleshooting" on page 77.

➔ **Note**

Be sure to re-connect the printer to your computer with a USB cable when changing the wireless LAN setting. Otherwise, your computer may fail to communicate with the printer.



14 Remove the USB cable, and click **Finish**.

To change the port name, click **Set Port Name**. For details, see "Changing the port name" in "Troubleshooting" on page 81.

Setup will next install application programs.



15 When the installation results are displayed, click **OK**.

If you are prompted to restart the computer, click **Yes** and restart the computer.

➔ **Note**

If the online registration dialog box appears, follow the on-screen instructions to register your product.

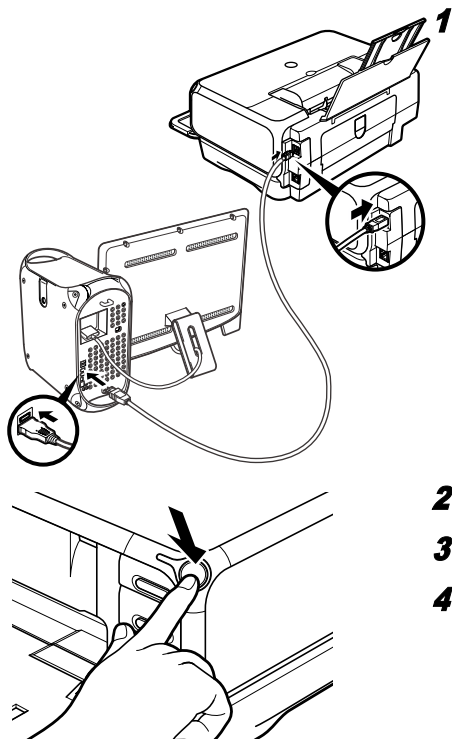
16 When the **On-Screen Manual** dialog box appears, click **Next**.

Printer software installation is now complete. Setup next proceeds to perform print head alignment.

17 When the **Print Head Alignment** dialog box appears, confirm that a sheet of A4 or Letter-sized plain paper is loaded in the Sheet Feeder, and click **Execute**.

Go to step 5 of “Aligning the Print Head - Windows” on page 52.

■ First-time Setup for Use over Wireless LAN - Macintosh



1 Connect the printer with a USB cable.

2 Turn on the printer.

3 Turn on the Mac.

4 Place the *Setup Software & User's Guide CD-ROM* in the CD-ROM drive.

5 Double-click the **Mac OS X** folder, then double-click the **Printer Driver** folder.



6 Double-click **PIXMA iP4000R xxx.pkg**.

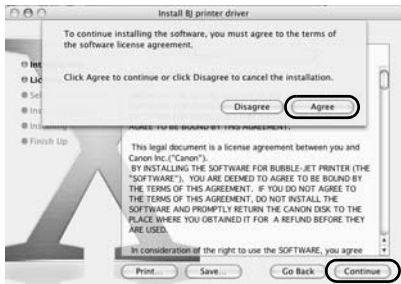
“x” represents a number.

➔ **Note**

When using Mac OS X v.10.2, the **Authenticate** dialog box appears. Enter the administrator’s name and password, and click **OK**.

7 Click **Continue**.

8 Read the **License Agreement** carefully and click **Continue**, then click **Agree**.



9 Select a destination to where you want to install the printer driver, and click **Continue**.

10 Click **Install**.

When using Mac OS X v.10.2, go to step 12.



11 Enter the administrator’s name and password, and click **OK**.

➔ **Note**

If you have forgotten the administrator name and/or password, click **?** and follow the instructions in **Mac Help**.



12 A message asking for your confirmation to restart your Mac appears on the screen. Read the message, then click **Continue Installation**.

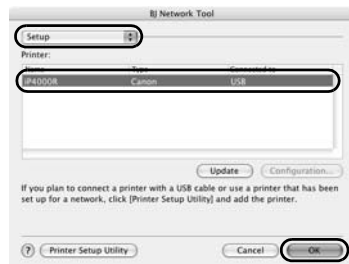
Software installation will start.





13 Click **Restart**.

When the computer restarts, BJ Network Tool will start up. If it does not start automatically, select **Library - Printers - Canon - BJ Printer - Utilities - BJ Network Tool**.



14 Select **Setup** from the pop-up menu and **ip4000R** in **Printer**, then click **OK**.

If the **The printer could not be detected** message is displayed, check that your printer is connected with a USB cable and turned on, then click **Update**.



15 Select **Wireless LAN** and click **OK**.

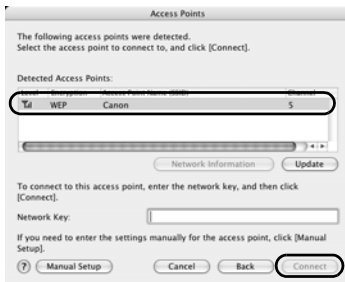
➔ **Note**

If the printer's network settings have been set before, the **Printer Network Setup** dialog box is displayed. For details, see "The Printer Network Setup dialog box is displayed during setup" in "Troubleshooting" on page 79.

16 Setup automatically detects your access point.

Important

If you connect to a network that is not protected with security measures, there is a risk of disclosing data such as your personal information to a third party.



- ❑ An access point is detected automatically and setup proceeds to the next step when
 - Setup detects an access point with the same network name (SSID) as the access point currently connected to your computer (when using AirPort Admin Utility version 3.1 or later), and the access point is not using encryption.
 - Setup did not detect an access point with the same network name (SSID) as the access point currently connected to your computer (or your computer is currently not connected to an access point in the first place), but a single access point without encryption was detected.

- ❑ If the detected access point is using encryption
 - When setup detects an access point with the same network name (SSID) as the access point currently connected to your computer, and the access point is using encryption (Password (WEP key) or WPA), the **Access Points** dialog box is displayed with the access point highlighted in the list.

Enter the network key (Password (WEP key) or WPA key) set to the access point and click **Connect**.

- ❑ If multiple access points were detected
 - If setup did not detect an access point with the same network name (SSID) as the access point currently connected to your computer (or your computer is currently not connected to an access point in the first place), and two or more access points were detected, the **Access Points** dialog box is displayed.

Select your target access point and click **Connect**.

If **WEP** or **WPA** is displayed in the **Encryption** column, a network key (Password (WEP key) or WPA key) is set to your access point. Enter the network key (Password (WEP key) or WPA key) set to the access point and click **Connect**.

 **Important**

You cannot connect to an access point using WPA Enterprise or an access point using WPA Personal with type of dynamic encryption set to AES. See “The Access Points dialog box is displayed during setup” on page 72.

→ Notes

- If the **Encryption** column is blank, the access point is not encrypted.
 - For details, see “The Access Points dialog box is displayed during setup” in “Troubleshooting” on page 72.
To confirm the password (WEP key) or the WPA key when using AirPort Base Station, use the AirPort Admin Utility. For details, refer to its online help.
 - For details on the access point’s network name (SSID) and network key (WEP key or WPA key) setting, refer to the manual provided with the access point.
-

- If no access points were detected, or your target access point is not displayed

If the **An access point could not be detected** message appears, click **OK** to display the **Access Points** dialog box. Click **Update** to perform detection again. If your access point is still not listed, take the following measures.

- Ensure that the access point is on and then click **Update**.
- Ensure that the printer is on and connected to your computer with a USB cable, then click **Update**.
- Move your printer closer to the access point and remove possible obstructions, then click **Update**.
- If all above fails, use manual searching. For details, see “The target access point is not detected, or you want to specify access point settings manually” in “Troubleshooting” on page 74.
- Using your access point’s utility software, check if your access point is set to a closed network / stealth mode. If so, click **Manual Setup** and enter the access point’s network name (SSID) in **Network (SSID)**.

17 Setup automatically detects the printer.

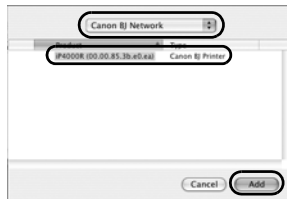
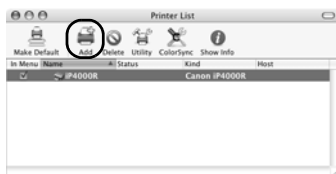
The iP4000R connected with a USB cable is detected automatically.

If the printer was not detected, the **Printer IP Address Setup** dialog box appears. Click **Connect** to retry detection. If your printer is still not detected, take the following measures.

- Ensure that the printer is on and connected to your computer with a USB cable, then click **Connect**.
- Move your printer closer to the access point and remove possible obstructions, then click **Connect**.
- Ensure that the computer's connection with the access point is operational, then click **Connect**.
- If all above fails, use manual searching. To confirm the IP address, click **Network Information** in the **Set Printer IP Address** dialog box. For details, see "The Set Printer IP Address / Printer IP Address Setup dialog box is displayed during setup" in "Troubleshooting" on page 77.

➔ **Note**

Be sure to re-connect the printer to your computer with a USB cable when changing the wireless LAN setting. Otherwise, your computer may fail to communicate with the printer.



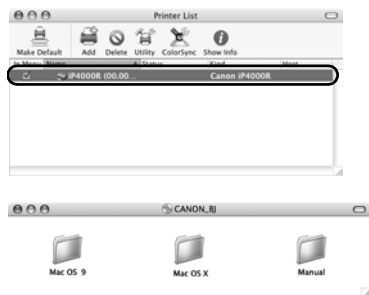
18 Remove the USB cable and click **OK**.

The Printer Setup Utility (Print Center on Mac OS X v.10.2) will start up.

19 Click **Add**.

20 Select **CANON BJ Network** from the pop-up menu, select **iP4000R** from the list of printers, and click **Add**.

The alphanumeric string after the printer name is its MAC address.



- 21** Confirm that your printer is added to the list of printers.

Printer driver setup is now complete.

- 22** Install applications. In the *Setup Software & User's Guide CD-ROM*, double-click **CANON_BJ** and then double-click **Application**.

Double-click the installer in folder for each application you want to install.

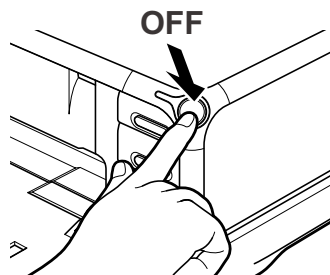
- 23** Perform print head alignment before you start using your printer.

See "Aligning the Print Head - Macintosh" on page 53.

First-time Setup for Use over Wired LAN

When you are setting up the printer to be used over wired LAN for the first time, the printer is set up to be used over a network, as well as the computer that uses it. Follow these steps.

■ **First-time Setup for Use over Wired LAN - Windows**



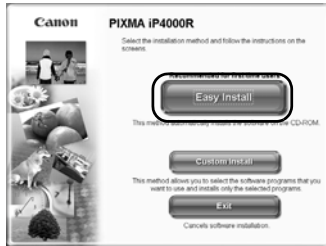
- 1** Ensure that the printer and the computer are turned off.
- 2** Turn on the computer and start Windows. If any applications automatically run, quit them.

Do NOT turn the printer on at this stage.

- 3** Place the *Setup Software & User's Guide CD-ROM* in the CD-ROM drive.

↳ **Note**

- If the CD-ROM does not run automatically, click **Start** and select **My Computer**, then double-click the CD-ROM icon. For non-XP Windows, double-click **My Computer** in the Windows screen, then double-click the CD-ROM icon.
 - If the language selection screen appears, select the language, then click **OK**.
 - If the location selection message appears, select your place of residence, then click **Next**.
-



- 4** Follow the instructions displayed on screen. When the screen shown on the left is displayed, click **Easy Install**.

↳ **Note**

When you select **Easy Install**, the items included in the CD-ROM are installed automatically. To select particular items to install, click **Custom Install** and follow the instruction on the screen.



- 5** When the list of applications to install appears, verify the contents, click **Install**, then follow the instructions on the screen.



- 6** Read the **License Agreement** carefully and click **Yes**.



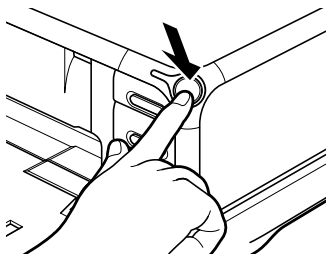
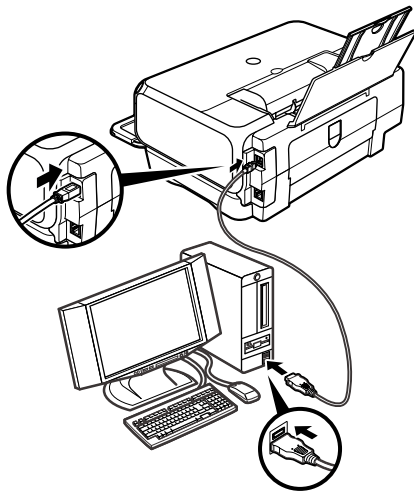
- 7** Select **Set up the printer and the computer** and click **Next**.



- 8 When the screen shown on the left appears, connect the printer with a USB cable and connect the printer to the network devices such as hubs with an ethernet cable.

↳ **Note**

Connection may vary depending on your network setup.

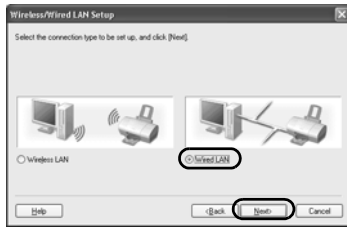


- 9 Turn on the printer.

If the printer is recognized, the next screen will appear automatically. If the connection is not recognized, click **Help** and follow its instructions.



- 10 Select **Use printer with LAN connection** and click **Next**.



11 Select **Wired LAN** and click **Next**.

↳ **Note**

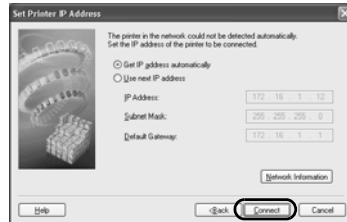
If the printer's network settings have been set before, the **Printer Network Setup** dialog box is displayed. For details, see "The Printer Network Setup dialog box is displayed during setup" in "Troubleshooting" on page 79.

12 Setup automatically detects the printer.

The iP4000R connected with a USB cable is detected automatically.

If the printer was not detected, the **Set Printer IP Address** dialog box appears. Click **Connect** to retry detection. If the printer is still not detected, take the following measures.

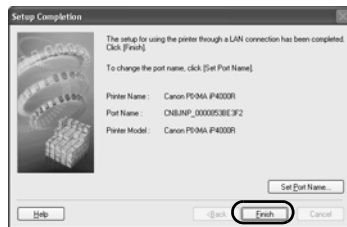
- Ensure that the printer is on and connected to your computer with a USB cable, then click **Connect**.
- Use manual searching. To confirm the IP address, click **Network Information** in the **Set Printer IP Address** dialog box. For details, see "The Set Printer IP Address / Printer IP Address Setup dialog box is displayed during setup" in "Troubleshooting" on page 77.



13 Remove the USB cable, and click **Finish**.

To change the port name, click **Set Port Name**. For details, see "Changing the port name" in "Troubleshooting" on page 81.

Setup will next install application programs.





14 When the installation results are displayed, click **OK**.

If you are prompted to restart the computer, click **Yes** and restart the computer.

↳ **Note**

If the online registration dialog box appears, follow the on-screen instructions to register your product.

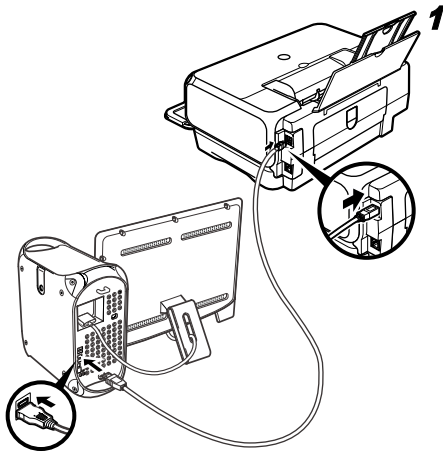
15 When the **On-Screen Manual** dialog box appears, click **Next**.

Printer software installation is now complete. Setup next proceeds to perform print head alignment.

16 When the **Print Head Alignment** dialog box appears, confirm that a sheet of A4 or Letter-sized plain paper is loaded in the Sheet Feeder, and click **Execute**.

Go to step 5 of “Aligning the Print Head - Windows” on page 52.

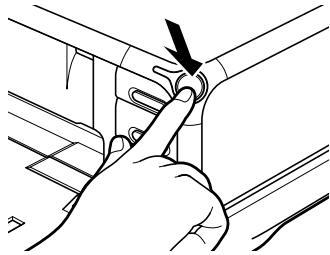
■ First-time Setup for Use over Wired LAN - Macintosh



1 Connect the printer with a USB cable and connect the printer to the network devices such as hubs with an ethernet cable.

↳ **Note**

Connection may vary depending on your network setup.



- 2** Turn on the printer.
- 3** Turn on the Mac.
- 4** Place the *Setup Software & User's Guide CD-ROM* in the CD-ROM drive.



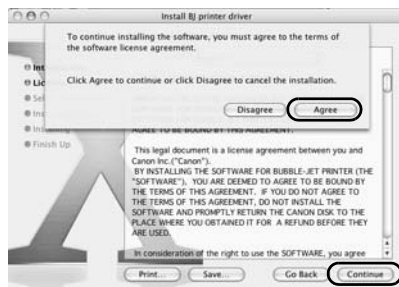
- 5** Double-click the **Mac OS X** folder, then double-click the **Printer Driver** folder.



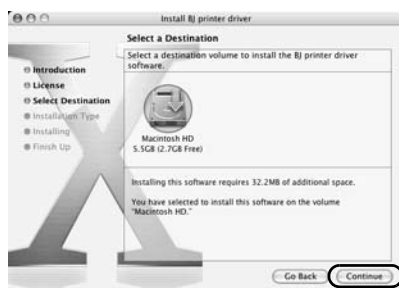
- 6** Double-click **PIXMA iP4000R xxx.pkg**.
“x” represents a number.

➔ **Note**

When using Mac OS X v.10.2, the **Authenticate** dialog box appears. Enter the administrator's name and password, and click **OK**.



- 7** Click **Continue**.
- 8** Read the **License Agreement** carefully and click **Continue**, then click **Agree**.



- 9** Select a destination to where you want to install the printer driver, and click **Continue**.


- 10** Click **Install**.

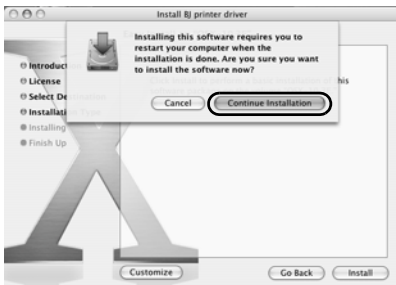
When using Mac OS X v.10.2, go to step 12.



11 Enter the administrator's name and password, and click **OK**.

↳ **Note**

If you have forgotten the administrator name and/or password, click  and follow the instructions in **Mac Help**.



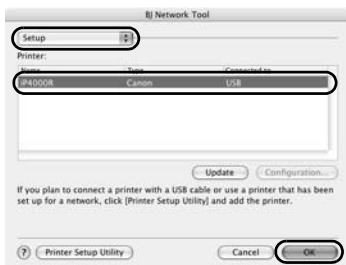
12 A message asking for your confirmation to restart your Mac appears on the screen. Read the message, then click **Continue Installation**.

Software installation will start.



13 Click **Restart**.

When the computer restarts, BJ Network Tool will start up. If it does not start automatically, select **Library - Printers - Canon - BJ Printer - Utilities - BJ Network Tool**.



14 Select **Setup** from the pop-up menu and **IP4000R** in **Printer**, then click **OK**.

If the **The printer could not be detected** message is displayed, check that your printer is connected with a USB cable and turned on, then click **Update**.



15 Select **Wired LAN** and click **OK**.

↳ **Note**

If the printer's network settings have been set before, the **Printer Network Setup** dialog box is displayed. For details, see "The Printer Network Setup dialog box is displayed during setup" in "Troubleshooting" on page 79.

16 Setup automatically detects the printer.

The iP4000R connected with a USB cable is detected automatically.

If the printer was not detected, the **Printer IP Address Setup** dialog box appears. Click **Connect** to retry detection. If your printer is still not detected, take the following measures.

- Ensure that the printer is on and connected to your computer with a USB cable, then click **Connect**.
- Use manual searching. To confirm the IP address, click **Network Information** in the **Set Printer IP Address** dialog box. For details, see “The Set Printer IP Address / Printer IP Address Setup dialog box is displayed during setup” in “Troubleshooting” on page 77.



17 Remove the USB cable and click OK.

The Printer Setup Utility (Print Center on Mac OS X v.10.2) will start up.

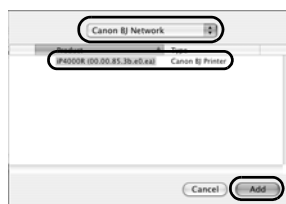


18 Click Add.



19 Select CANON BJ Network from the pop-up menu, select iP4000R from the list of printers, and click Add.

The alphanumeric string after the printer name is its MAC address.





20 Confirm that your printer is added to the list of printers.

Printer driver setup is now complete.

21 Install applications. In the *Setup Software & User's Guide CD-ROM*, double-click **CANON_BJ** and then double-click **Application**.

Double-click the installer in folder for each application you want to install.

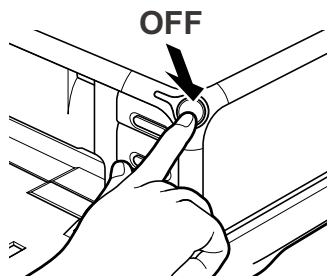
22 Perform print head alignment before you start using your printer.

See "Aligning the Print Head - Macintosh" on page 53.

Setting Up for Use with USB Connection

When you are setting up the printer to be used as a standalone printer with USB connection, follow these steps.

■ Setting Up for Use with USB Connection - Windows



1 Ensure that the printer and the computer are turned off.

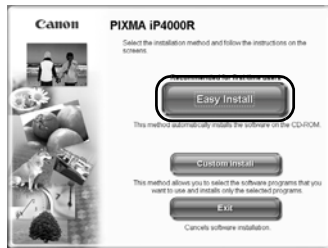
2 Turn on the computer and start Windows. If any applications automatically run, quit them.

Do NOT turn the printer on at this stage.

3 Place the *Setup Software & User's Guide CD-ROM* in the CD-ROM drive.

→ Notes

- If the CD-ROM does not run automatically, click **Start** and select **My Computer**, then double-click the CD-ROM icon. For non-XP Windows, double-click **My Computer** in the Windows screen, then double-click the CD-ROM icon.
- If the language selection screen appears, select the language, then click **OK**.
- If the location selection message appears, select your place of residence, then click **Next**.



- 4 Follow the instructions displayed on screen. When the screen shown on the left is displayed, click **Easy Install**.

↳ **Note**

When you select **Easy Install**, the items included in the CD-ROM are installed automatically. To select particular items to install, click **Custom Install** and follow the instruction on the screen.



- 5 When the list of applications to install appears, verify the contents, click **Install**, then follow the instructions on the screen.



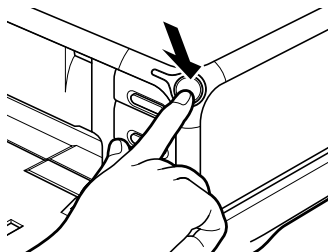
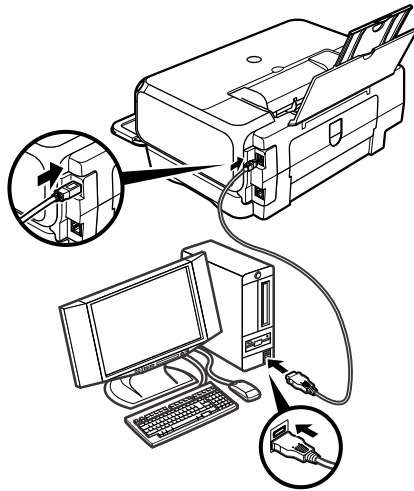
- 6 Read the **License Agreement** carefully and click **Yes**.



- 7 Select **Set up the printer and the computer** and click **Next**.

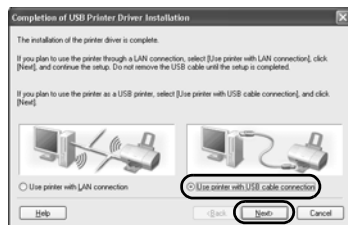


- 8** When the screen shown on the left appears, connect the printer with a USB cable.



- 9** Turn on the printer.

If the printer is recognized, the next screen will appear automatically. If the connection is not recognized, click **Help** and follow its instructions.



- 10** Select **Use printer with USB cable connection** and click **Next**.



11 When the installation results are displayed, click **OK**.

If you are prompted to restart the computer, click **Yes** and restart the computer.

↳ **Note**

If the online registration dialog box appears, follow the on-screen instructions to register your product.

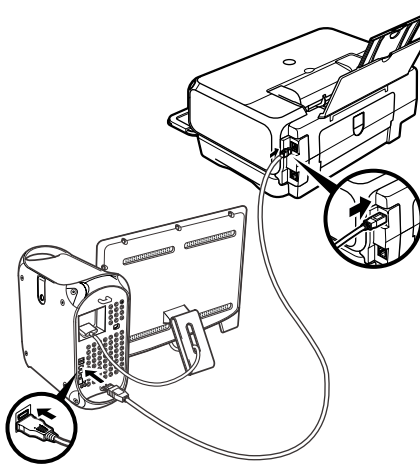
12 When the **On-Screen Manual** dialog box appears, click **Next**.

Printer software installation is now complete. Setup next proceeds to perform print head alignment.

13 When the **Print Head Alignment** dialog box appears, confirm that a sheet of A4 or Letter-sized plain paper is loaded in the Sheet Feeder, and click **Execute**.

Go to step 5 of “Aligning the Print Head - Windows” on page 52.

■ **Setting Up for Use with USB Connection - Macintosh**



1 Connect the printer with a USB cable.