

- 2** Turn on the printer.
- 3** Turn on the Mac.
- 4** Place the *Setup Software & User's Guide CD-ROM* in the CD-ROM drive.



- 5** Double-click the **Mac OS X** folder, then double-click the **Printer Driver** folder.



- 6** Double-click **PIXMA iP4000R xxx.pkg**.

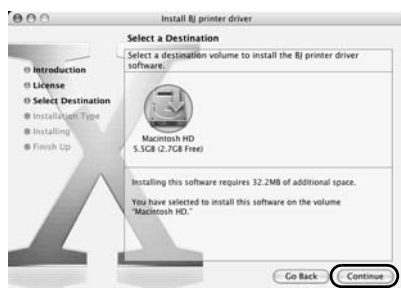
“x” represents a number.

➔ **Note**

When using Mac OS X v.10.2, the **Authenticate** dialog box appears. Enter the administrator's name and password, and click **OK**.



- 7** Click **Continue**.
- 8** Read the **License Agreement** carefully and click **Continue**, then click **Agree**.




- 9** Select a destination to where you want to install the printer driver, and click **Continue**.
- 10** Click **Install**.

When using Mac OS X v.10.2, go to step 12.



11 Enter the administrator's name and password, and click **OK**.

↳ **Note**

If you have forgotten the administrator name and/or password, click  and follow the instructions in **Mac Help**.



12 A message asking for your confirmation to restart your Mac appears on the screen. Read the message, then click **Continue Installation**.

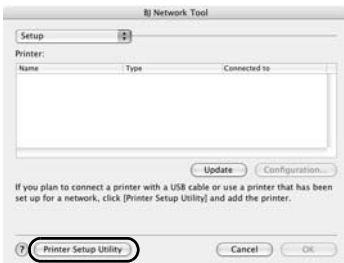
Software installation will start.



13 Click **Restart**.

When the computer restarts, BJ Network Tool will start up. If it does not start automatically, select **Library - Printers - Canon - BJ Printer - Utilities - BJ Network Tool**.

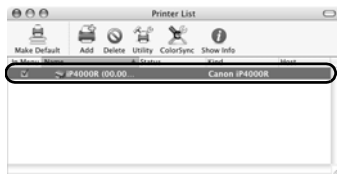
14 Select **Setup** from the pop-up menu.



15 Click **Printer Setup Utility (Print Center on Mac OS X v.10.2)**.



16 Click **Cancel**.



17 Confirm that your printer is added to the list of printers.

The alphanumeric string after the printer name is its MAC address.

➔ **Note**

If the printer does not appear on the list, click **Add** and select **USB** from the pop-up menu. Select **IP4000R** from the list of printers and click **Add**.

Printer driver setup is now complete.



18 Install applications. In the *Setup Software & User's Guide CD-ROM*, double-click **CANON_BJ** and then double-click **Application**.

Double-click the installer in folder for each application you want to install.

19 Perform print head alignment before you start using your printer.

See "Aligning the Print Head - Macintosh" on page 53.

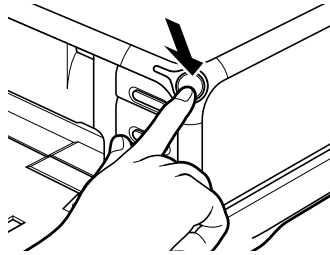
Setting Up an Additional Computer to Use a Printer Already Connected to a Network

When your printer is already set up to be used over a network, and you want to set up another computer to use the shared printer, the computer needs to be set up to use the printer, but not the printer itself. Follow these steps.

■ Setting Up an Additional Computer to Use a Printer Already Connected to a Network - Windows

➔ **Notes**

- Make sure the computer you are setting up is NOT connected to the printer via a USB cable.
 - Make sure the printer is properly set up and is currently available for use over the wireless or wired network.
-



- 1** Turn on the printer.
- 2** Turn on the computer.

- 3** Place the *Setup Software & User's Guide CD-ROM* in the CD-ROM drive.

→ **Notes**

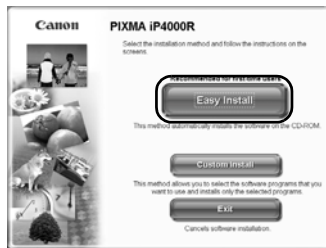
- If the CD-ROM does not run automatically, click **Start** and select **My Computer**, then double-click the CD-ROM icon. For non-XP Windows, double-click **My Computer** in the Windows screen, then double-click the CD-ROM icon.
- If the language selection screen appears, select the language, then click **OK**.
- If the location selection message appears, select your place of residence, then click **Next**.

- 4** Follow the instructions displayed on screen. When the screen shown on the left is displayed, click **Easy Install**.

→ **Note**

When you select **Easy Install**, the items included in the CD-ROM are installed automatically. To select particular items to install, click **Custom Install** and follow the instruction on the screen.

- 5** When the list of applications to install appears, verify the contents, click **Install**, then follow the instructions on the screen.

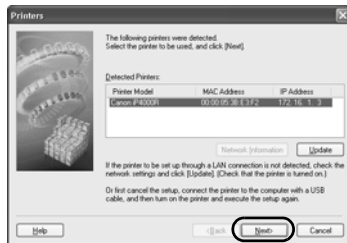




6 Read the **License Agreement** carefully and click **Yes**.



7 Select **Set up only the computer** and click **Next**.

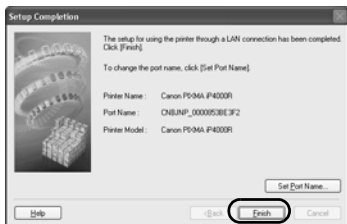


8 Select the printer in the **Printers** dialog box, and click **Next**.

Notes

If the printer was not detected, confirm the following and click **Update**.

- Ensure that the printer is on.
- Ensure that the firewall is turned off.
- When using wireless LAN, confirm that the computer can communicate with the access point.
- When using wired LAN, confirm that the computer is connected to the hub.
- Confirm that the printer is not set to use access control.



9 Click **Finish** in the **Setup Completion** dialog box.

To change the port name, click **Set Port Name**. For details, see “Changing the port name” in “Troubleshooting” on page 81.

Setup will next install application programs.



10 When the installation results are displayed, click **OK**.

If you are prompted to restart the computer, click **Yes** and restart the computer.

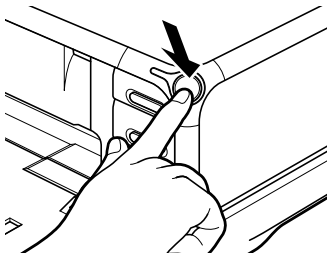
11 When the **On-Screen Manual** dialog box appears, click **Next**.

Printer software installation is now complete. You can skip print head alignment if it is already adjusted properly.

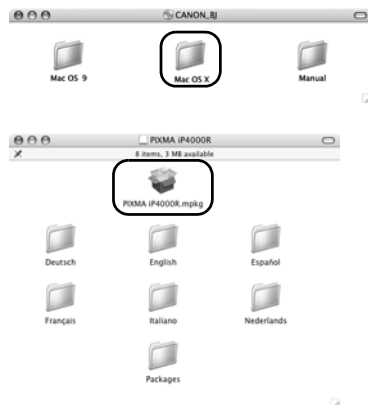
■ Setting Up an Additional Computer to Use a Printer Already Connected to a Network - Macintosh

➔ Notes

- Make sure the computer you are setting up is NOT connected to the printer via a USB cable.
- Make sure the printer is properly set up and is currently available for use over the wireless or wired network.



- 1** Turn on the printer.
- 2** Turn on the Mac.
- 3** Place the *Setup Software & User's Guide CD-ROM* in the CD-ROM drive.



- 4** Double-click the **Mac OS X** folder, then double-click the **Printer Driver** folder.

- 5** Double-click **PIXMA iP4000R xxx.pkg**.

“x” represents a number.

➔ Note

When using Mac OS X v.10.2, the **Authenticate** dialog box appears. Enter the administrator's name and password, and click **OK**.

6 Click **Continue**.

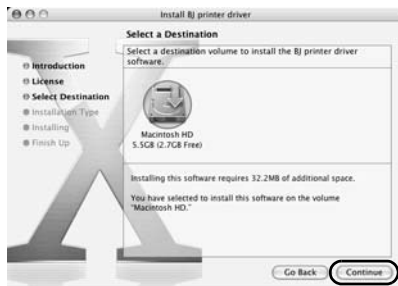
7 Read the **License Agreement** carefully and click **Continue**, then click **Agree**.



8 Select a destination volume to install the printer driver, and click **Continue**.

9 Click **Install**.

When using Mac OS X v.10.2, go to step 11.



10 Enter the administrator's name and password, and click **OK**.

➔ **Note**

If you have forgotten the administrator name and/or password, click **?** and follow the instructions in **Mac Help**.



11 A message asking for your confirmation to restart your Mac appears on the screen. Read the message, then click **Continue Installation**.

Software installation will start.





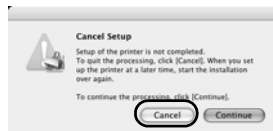
12 Click **Restart**.

When the computer restarts, BJ Network Tool will start up. If it does not start automatically, select **Library - Printers - Canon - BJ Printer - Utilities - BJ Network Tool**.

13 Select **Setup** from the pop-up menu.

14 When a message appears notifying that no printer was detected, click **OK**.

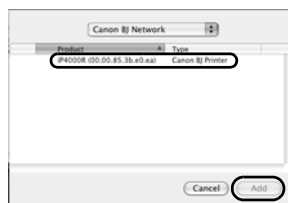
15 Click **Printer Setup Utility (Print Center on Mac OS X v.10.2)**.



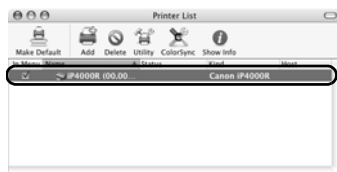
16 Click **Cancel**.



17 Click **Add**.



18 Select **CANON BJ Network** from the pop-up menu, select **iP400R** from the list of printers, and click **Add**.



19 Confirm that your printer is added to the list of printers.

The alphanumeric string after the printer name is its MAC address.

Printer driver setup is now complete.



20 Install applications. In the *Setup Software & User's Guide CD-ROM*, double-click **CANON_BJ** and then double-click **Application**.

Double-click the installer in folder for each application you want to install.

Software setup is now complete. You can skip print head alignment if it is already adjusted properly.

Aligning the Print Head

Aligning the print head allows you to print without shifting the color registration, and is a necessary step to print properly.

Notes

- The Print Head can be aligned also from the printer itself. With the printer on, load a sheet of Letter-sized plain paper in the Sheet Feeder. Hold the **RESUME/CANCEL** button until the **POWER** lamp flashes four times.
- You need to load a sheet of A4 or Letter-sized plain paper in the Sheet Feeder when you carry out the print head alignment.

Aligning the Print Head - Windows

1 Click **Start** and select **Control Panel, Printers and Other Hardware**, and then **Printers and Faxes**.

Note

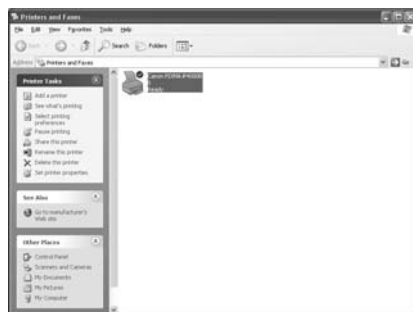
For non-Windows XP users, click **Start**, then select **Settings, Printers**.

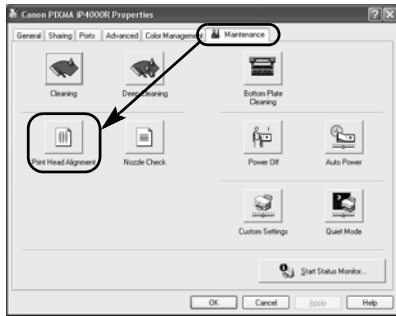
2 Click the icon for your printer.

3 Open the **File** menu and select:

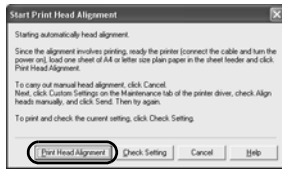
- Windows XP/Windows 2000 → **Printing Preferences**
- Windows Me/Windows 98 → **Properties**

to open the setting screen.





4 Click the **Maintenance** tab, and click **Print Head Alignment**.

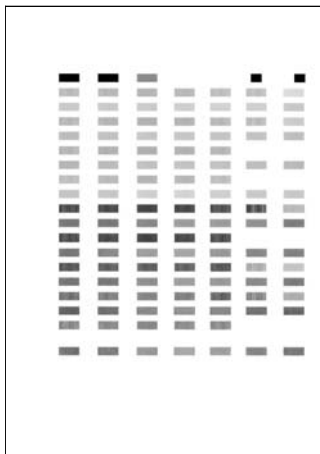


5 Read the message and click **Print Head Alignment**.

It takes about 80 seconds to start printing. Do not open the Top Cover while printing.



6 If a message warning you not to perform other operations appears, click **OK**.



7 Ensure the pattern shown on the left is printed.

The Print Head is aligned automatically. The printer is now ready to use.

➔ **Notes**

- If the pattern is not printed successfully, refer to “Eleven Flashes” in “The Power Lamp Flashes Orange” of the *User’s Guide*.
 - At first-time setup, if you are prompted to restart the computer, click **Yes** to restart the computer.
-

■ Aligning the Print Head - Macintosh

1 Double-click the hard disk icon where the printer driver was installed, the **Applications** folder, and then the **Utilities** folder.

2 Double-click the **Printer Setup Utility** icon.

When using Mac OS X v.10.2, double-click the **Print Center** icon.

3 Select your printer from the **Name** list and click **Utility**.

If the printer is not displayed in the **Printer List**, you need to add it on the list.

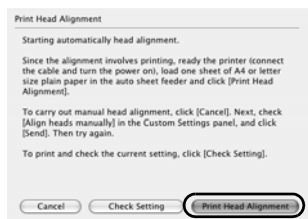
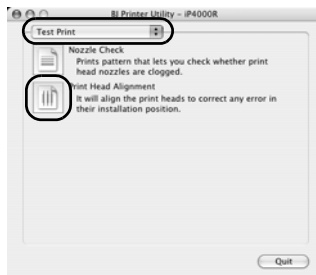
For details, follow the instructions in **Mac Help**.

When using Mac OS X v.10.2, select your printer from the **Name** list and click **Configure**.

4 Select your printer from the **Product** list and click **Maintenance**.

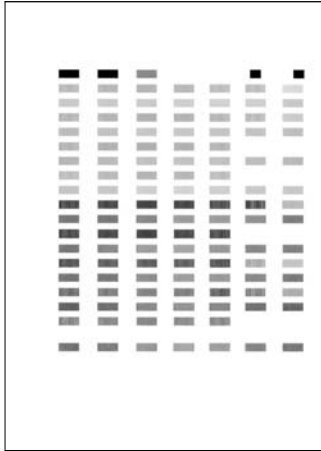
BJ Printer Utility appears.

5 Select **Test Print** from the pop-up menu, and click **Print Head Alignment**.



6 Read the message and click **Print Head Alignment**.

It takes about 80 seconds to start printing. Do not open the Top Cover while printing.



7 Ensure that the pattern on the left is printed.

The Print Head is aligned automatically. The printer is now ready to use.

↳ **Note**

If the pattern is not printed successfully, refer to “Eleven Flashes” in “The Power Lamp Flashes Orange” of the *User’s Guide*.

Basic Operations

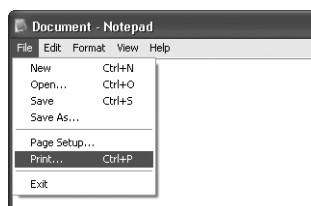
⚠ Caution

- If you detect smoke, unusual smells or strange noises around the printer, immediately switch the printer off and always unplug the printer. Contact your local Canon service representative.
- To avoid injury, never put your hand or fingers inside the printer while it is printing.

Printing with Windows

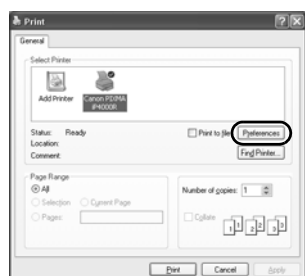
Adjusting the print settings according to your needs allows you to produce better quality prints. In this section, we will use NotePad for the purpose of explanation. The procedures and the screens that appear on your computer may differ depending on the application that you use.

■ Printing



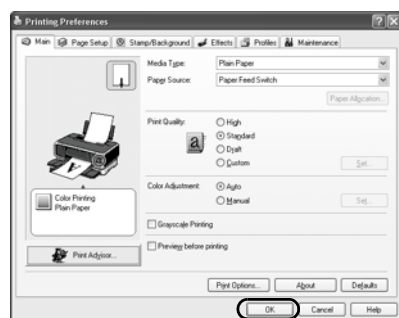
1 Print the document from the application.

From the **File** menu, click **Print**. Refer to the application's users manual for the actual procedures.



2 Ensure that your printer is selected, then click:

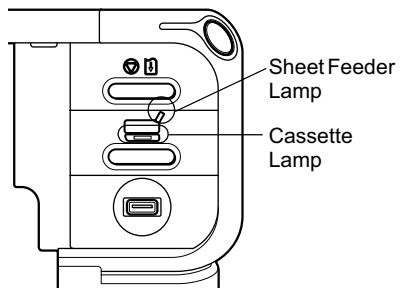
- Windows XP → **Preferences**
- Windows Me/Windows 98 → **Properties**
- Windows 2000 → **Main** tab



3 Specify the required settings and click **OK**.

→ Notes

- If you use anything other than plain paper, see “Basic Printing Settings” on page 57.
- This section describes the procedure for selecting the paper source with the Paper Feed Switch on the printer. For details about the other settings for specifying the paper source, refer to “Changing the Paper Source” on the *User's Guide*.



4 Ensure that the proper lamp of the paper source is lit.

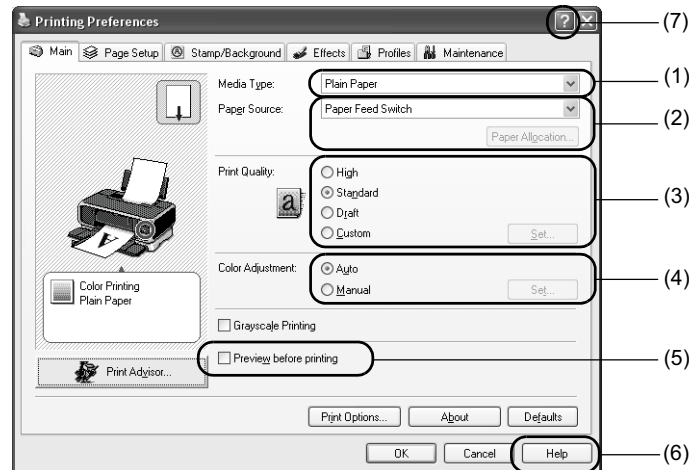
If not, press the Paper Feed Switch on the printer.

5 To start printing, click **Print**.

Printing will start in a few moments.

■ Basic Printing Settings

For the best print quality, specify the minimum requirement settings in the **Main** tab. To get the best results, ensure you select the type of media loaded in the printer when printing on paper other than plain paper.



(1) Media Type	Select the type of media loaded in the printer.
(2) Paper Source	Select the setting here when you do not specify the paper source with the Paper Feed Switch on the printer.
(3) Print Quality	Select one option from High , Standard , and Draft . Select Custom to set the print quality manually.
(4) Color Adjustment	To control the color adjustment settings in more detail, select Manual .
(5) Preview before printing	Select this to check the layout before printing.
(6) Help	Click this for a more detailed explanation of the functions in the tab. (This may not appear when using Windows XP or Windows 2000. If this happens, click Start then select All Programs (or Programs) - Canon PIXMA iP4000R - Guide .)
(7) ?	Click this to change the cursor shape to ?. By clicking on the item's name with this ? cursor, an explanation will be displayed.

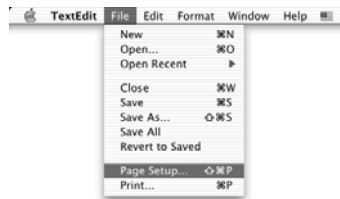
→ Notes

- Clicking **Print Advisor** allows you to change to the most appropriate print settings simply by answering questions when prompted.
- Use the application to specify the paper size and paper orientation. Before printing, open the settings screen and check that **Page Size** in the **Page Setup** tab is the same as that specified within application.
- Refer to the *User's Guide* for more information about printer driver functionality.

Printing with Macintosh

Adjusting the print settings according to your needs allows you to produce better quality prints.

■ Printing



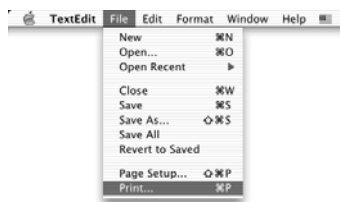
- 1 Open the **Page Setup** dialog box in your application.

From the **File** menu, click **Page Setup**. Refer to the application's users manual for the actual procedures.



- 2 Specify the page setup, then click **OK**.

For details, see "Page Setup" on page 59.



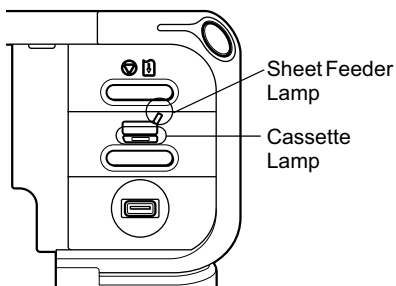
- 3 Open the **Print** dialog box in your application to print the document.

From the **File** menu, click **Print**. Refer to the application's users manual for the actual procedures.



- 4 Specify the printing settings according to your requirements.

For details, see "Basic Printing Settings" on page 59.



- 5 Ensure that the proper lamp of the paper source is lit.

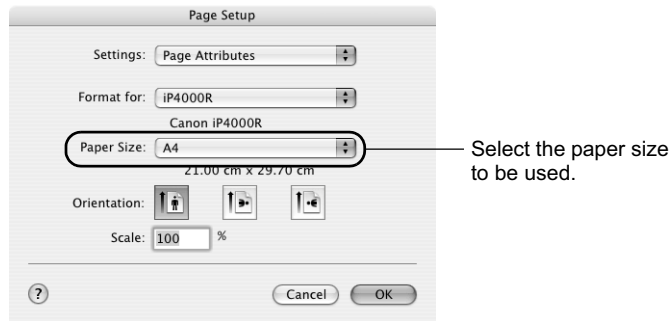
If not, press the Paper Feed Switch on the printer.

- 6 Click **Print**.

Printing will start in a few moments.

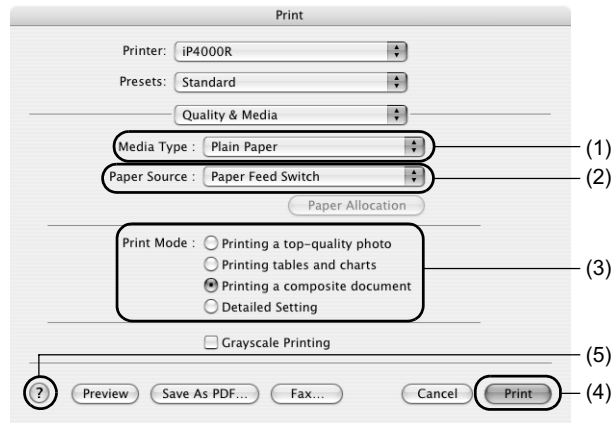
■ Page Setup

From the **Page Setup** dialog box, specify the **Paper Size** settings.



■ Basic Printing Settings

For the best print quality, specify the minimum requirement settings in the **Print** dialog box. Select **Quality & Media** from the pop-up menu to change the display of the dialog box. To get the best results, ensure you select the type of media loaded in the printer when printing on paper other than plain paper.



(1) Media Type	Select the type of media loaded in the printer.
(2) Paper Source	Select the setting here when you do not specify the paper source with the Paper Feed Switch on the printer.
(3) Print Mode	Select the type of document you want to print. To specify more detailed settings for the print quality, click Detailed Setting .
(4) Print	Click this to start printing.
(5) (?)	Click this for more information about other printer driver functions. (?) appears also in the Page Setup dialog box.

➔ **Note**

Refer to the *User's Guide* for more information about printer driver functionality.

Print Head Maintenance

■ If Blurring Occurs or If a Specific Color Does Not Print

Perform **Print Head Cleaning** to improve the print quality. Ensure that the printer is turned on and follow the instructions below.

- Windows
Open the **Printer Properties** dialog box and click the **Maintenance** tab. Click **Cleaning**. For details, refer to the *User's Guide*.
- Macintosh
Open the **BJ Printer Utility** dialog box and select **Cleaning** from the pop-up menu. Click **Cleaning**. For details, refer to the *User's Guide*.

■ When the Printer Runs out of Ink

Replace the empty ink tank with a new one.
Specify the following ink tanks when purchasing.

Black : BCI-6BK



Black : BCI-3eBK



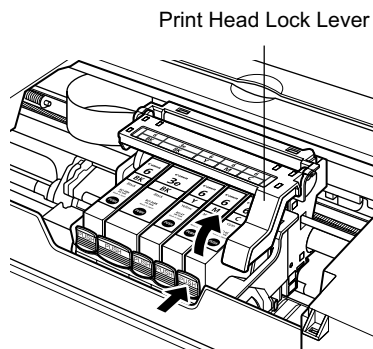
Yellow : BCI-6Y



Magenta : BCI-6M

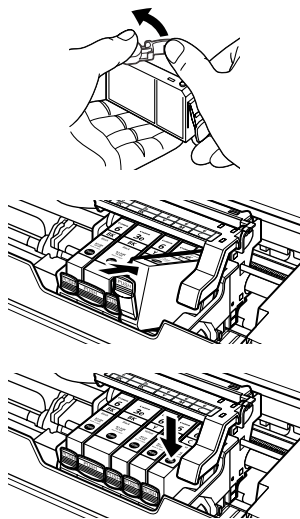


Cyan : BCI-6C



- 1** Open the Paper Output Tray.
- 2** Open the Top Cover and pull down the Inner Cover, then remove the empty ink tank.

Do not touch the Print Head Lock Lever.



3 Install the new ink tank.

Put back the Inner Cover and close the Top Cover when finished.

➔ **Note**

For more details about maintenance, refer to the *User's Guide*.

Appendix

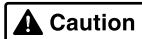
Printing Photographs Directly from a Digital Camera

Connecting a digital still camera or camcorder to the printer allows you to print recorded images directly without using a computer. This printer supports both PictBridge and Canon Bubble Jet Direct.

→ **Notes**

- PictBridge is an industry standard enabling a range of digital photo solutions, including the direct printing of photos from a digital still camera or a digital video camcorder* without the need to use a computer.
 - Canon Bubble Jet Direct allows you to print photos from a Canon Bubble Jet Direct compatible (PictBridge incompatible) digital camera or digital video camcorder without a computer by simply connecting the digital camera or digital video camcorder to this printer.
- * Hereafter, the digital still camera and digital video camcorder are collectively called a digital camera or camera.

■ **Connecting to a Digital Camera**



Do not connect any equipment other than the camera ready for PictBridge or Canon Bubble Jet Direct to the Direct Print Port of the printer. If you do so, electric shock, fire, or damage to the camera could result.

→ **Notes**

- When producing photos with the digital camera connected to the printer, it is advisable to use the AC adapter supplied with the camera. If you use the camera battery, be sure to charge it fully.
- The Print Head cannot be aligned using the controls of the digital camera. For information on how to align the Print Head from the printer, see page 51.
- Depending on the model or brand of your camera, you may have to select a mode of producing photos compliant with PictBridge before connecting the camera.
You may also have to turn on the camera or select Play mode manually after connecting the camera to the printer.
Perform necessary operations according to the instruction manual supplied with your camera.
- When printing from your PC, be sure to unplug the cable connecting the digital camera.

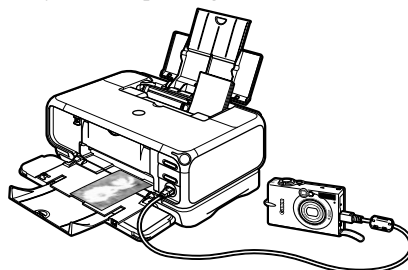
1 Turn on the printer.

Make sure the camera is turned off.

2 Load the paper in the printer.

3 Connect the digital camera to the printer.

- (1) Connect the camera to the printer using the USB cable (for connection to a computer) supplied with the camera.
- (2) Turn on and set up the camera for direct printing.
When the connection between the camera and printer has been established, the **POWER** lamp on the printer flashes once.
* The power-on sequence may differ depending on the model or brand of the camera.



Either of the following icons will appear on the LCD of the digital camera display when the printer is correctly connected.



A PictBridge-compliant digital camera.



A Canon Bubble Jet Direct compatible digital camera.

■ Printing Photographs Directly from a PictBridge-Compliant Digital Camera

Default Camera Settings

When a PictBridge-compliant camera is connected and printing is started with no printing option selected, this printer operates based on the following default settings:

- Paper size 10 x 15 cm / 4" x 6"
- Paper type Photo (Photo Paper Plus Glossy)
- Layout Borderless
- Trimming Off (No trimming)
- Image optimize On (ExifPrint)
- Date print Off (No printing)

About the Settings Explained Below

The settings explained on the following pages cannot be made on some cameras. If any setting cannot be made, the default setting explained above is used.

Names of settings that are displayed on Canon PictBridge-compliant cameras are used in the description given below.

Different names may be displayed on your camera depending on the brand or model.

For details, refer to your camera's instruction manual.

About Paper size and Paper type

To change the paper size or paper type, operate the camera to select the PictBridge print setup mode and confirm or check the settings.

To print on Photo Paper Pro, select **Fast Photo** from **Paper type** on the display of the camera. Select **Photo** for Photo Paper Plus Glossy.

If using a Canon PictBridge-compatible camera, you can select **5" x 7"** from **Paper size**

The following sizes and types of paper can be loaded in the printer by selecting options from **Paper size** and **Paper type**.

Paper size setting	Paper type setting	Paper loaded in printer
10 x 15 cm / 4" x 6" (Default)	Photo (Default)	Photo Paper Plus Glossy
	Fast Photo	Photo Paper Pro
	Photo	Photo Paper Plus Semi-gloss
	Photo	Glossy Photo Paper
13 x 18 cm / 5" x 7"	Photo	Photo Paper Plus Glossy
A4	Photo	Photo Paper Plus Glossy
	Fast Photo	Photo Paper Pro
	Photo	Photo Paper Plus Semi-gloss
	Photo	Glossy Photo Paper
5.4 x 8.6 cm / Credit Card	Photo	Glossy Photo Paper

When **4" x 6"** is selected from **Paper size**, “2-up”, “4-up”, “9-up”, and “16-up” options may be available in **Layout**.

About Image optimize

If you use a Canon PictBridge-compliant camera, you can select **VIVID**, **NR**, or **VIVID+NR**. (Note that these options cannot be selected for some models.)

➔ Notes

- When **VIVID** is selected, green and blue portions of photos are printed vividly.
 - When **NR** (Noise Reduction) is selected, noise in blue portions, such as the sky, and dark portions is removed.
 - When **VIVID+NR** is selected, functions of both **VIVID** and **NR** are performed.
-

About Date print

If “On” is selected, the shooting date recorded in Exif image data is printed in the lower-right corner of each photo.

→ Notes

- This printer can handle only Exif/JPEG image data to produce photos using PictBridge.
 - Never disconnect the USB cable during printing.
 - When disconnecting the USB cable between the digital camera and printer, follow the instructions given in the Instruction Manual of the camera.
 - Controls of the digital camera cannot be used for the following:
 - Print quality setting
 - Printer maintenance
 - For the digital camera operation method and troubleshooting, refer to your digital camera’s manual.
 - For print error messages, refer to the *User’s Guide*.
-

■ Printing Photographs Directly from a Canon Bubble Jet Direct Compatible Digital Camera

Media Types for Digital Camera

When you connect a digital camera, you can use the following media:

Digital Camera Setting	Media Type
Card #1	Photo Paper Pro 4" x 6" / 101.6 x 152.4 mm
Card #2	Photo Paper Plus Glossy 4" x 6" / 101.6 x 152.4 mm
	Photo Paper Plus Semi-gloss 4" x 6" / 101.6 x 152.4 mm
	Glossy Photo Paper 4" x 6" / 101.6 x 152.4 mm
Card #3	Photo Paper Plus Glossy 5" x 7" / 127.0 x 177.8 mm
LTR	Photo Paper Pro Letter size
	Photo Paper Plus Glossy Letter size
	Photo Paper Plus Semi-gloss Letter size
	Glossy Photo Paper Letter size
A4	Photo Paper Pro A4 size
	Photo Paper Plus Glossy A4 size
	Photo Paper Plus Semi-gloss A4 size
	Glossy Photo Paper A4 size

→ Notes

- For the digital camera operation method and troubleshooting, refer to your digital camera's manual.
- For print error messages, refer to the *User's Guide*.
- By operating the digital camera, you can make the following prints:
 - You can make a standard print from the image displayed in the single display mode or in the index display mode.
 - You can print specified numbers of images, or make an index print by editing the DPOF.
 - For the images taken with an ExifPrint-compatible digital camera, the Photo Optimizer PRO function can be used.
 - If date printing is set from the digital camera, the date when the photograph was taken is to be printed (excluding the index print).
 - Images will be scaled automatically according to the image size set on the digital camera and the size of the media set on the printer.
- The digital camera does not support the following functions:
 - Print quality setting
 - Printer maintenance
- Images other than Exif may not be index printed.

Notes on Handling the USB Interface (for Windows Users)

If installation of the printer driver does not proceed as instructed in this *Setup Guide*, there may be a problem with the USB driver installation. Try reinstalling the printer driver.

■ Reinstalling



The screen shown on the left appears when the installation of the printer driver fails.

If the reinstallation is unsuccessful;

- 1** Click **Cancel** on the **Printer Connection** dialog box.
- 2** Click **Start Over** on the **Installation Failure** dialog box.
- 3** Click **Back** on the screen which appears next.
- 4** Click **Exit** on the Welcome screen, then remove the CD-ROM.
- 5** Turn the printer and computer off.
- 6** Check the cable connection.
- 7** Restart the computer.
- 8** Reinstall the printer driver (see page 16).

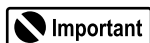
Printing and Initializing Network Settings

■ Printing Network Setting Information

To print the current network settings of the printer, hold down the **RESUME/CANCEL** button until the **POWER** lamp flashes 6 times, then release it.

The following information is printed.

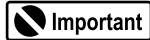
- Printer name
- Firmware version
- Wireless LAN information
- Wired LAN information
- Printer access control
- Admin password
- Device status



This printout contains valuable information about your computer. Handle it with care.

■ Initializing Network Settings

To initialize the network settings of the printer, follow these steps.



Note that initialization erases all connection settings with computers, disabling printing.

- 1** Make sure that the printer is connected to your computer with a USB cable.
- 2** Turn on the printer.
- 3** Start BJ Network Tool.
On Windows, click **Start** and select **All programs** (or **Programs**), **BJ Network Tool** and then **BJ Network Tool**.
On Macintosh, select **Library - Printers - Canon - BJPrinters - Utilities - BJ Network Tool**.
- 4** Select **Maintenance** from the **Settings** menu.
- 5** Click **Initialize** under **Setting Initialization** in the **Maintenance** dialog box.
- 6** Click **Yes** in the **Initialize Settings** dialog box (Windows) or **OK** in the **Setting Initialization** dialog box (Macintosh).

For Further Details...

For further information on printing operation or about the printer in general, refer to the *User's Guide*. For further information on network setup, refer to the *Network Guide*. The guides are HTML manuals you can browse through on your computer.

■ User's Guide Contents

- Printer parts and their functions
- Using the sheet feeder and the cassette
- Printer driver functions
- Routine maintenance
- Printing media
- Troubleshooting (printing related)
- Specifications

■ Network Guide Contents

- Overview
- On Security
- Changing and Confirming Network Settings
- Troubleshooting (network setting related)
- Appendix
- Glossary

■ How to View the User's Guide/Network Guide

For Windows

Double-click the **iP4000R User's Guide** or the **iP4000R Network Guide** short-cut icon on the desk top, or click **Start** and select **All Programs** (or **Programs**), **Canon PIXMA iP4000R Manual** and **User's Guide** or **Network Guide**.

For Mac OS X

- (1) Load the CD-ROM in your computer, and double-click the **OS X** folder.
- (2) Double-click the **Manual** folder.
- (3) Select a language folder.
- (4) Double-click the **User's Guide** or the **Network Guide** folder.
- (5) Double-click the icon for the **iP4000R_UG_ENG.htm** or the **iP4000R_NWG_ENG.htm** file.

■ Applications Included in the CD-ROM Package

Easy-WebPrint (Windows)

You can easily print out homepages displayed on Internet Explorer in full size without its right-hand side being cropped. This application is automatically added to the Internet Explorer toolbar. Internet Explorer 5.5. or later must be installed.

Easy-PhotoPrint (Windows/Macintosh)

You can make a Borderless Print easily and quickly, just by selecting a photograph taken with a digital camera and the paper type on which to print. Also it has tools to correct red eye caused by the camera's flash or smooth and beautify the facial skin. It is compatible with ExifPrint.

PhotoRecord (Windows)

You can create fun and unique photo albums with a click of your mouse. It is compatible with ExifPrint.

For more information on the applications, refer to the Photo Application Guide.

■ BJ Printer Driver Systems Requirements

For Windows

- Use a computer on which Windows XP, Windows 2000, Windows Me or Windows 98 can operate.
- USB interface
- CD-ROM drive
- Available hard-disk space for printer driver installation

Windows XP/Windows 2000: 50MB

Windows Me/Windows 98: 15MB

For Macintosh

- Use a Macintosh series computer equipped with USB interface on which Mac OS X v.10.2.1 or later can operate.
- Available hard-disk space for printer driver installation
Mac OS X v.10.2.1 or later: 100 MB
- The following functions are not supported when using Mac OS X v.10.2.1 or later:
 - Manual Duplex Printing
 - Poster Printing
 - Fit-to-Page Printing
 - Booklet Printing
 - Reverse Order Printing (supported with Mac OS X v.10.3.x)
 - Photo Optimizer Pro

Additional Systems Requirements for Electronic Manuals

- Pentium[®] 75 MHz equivalent or higher processor (Pentium[®] 133 MHz equivalent or higher processor recommended)
- 2x or higher CD-ROM drive (4x or higher recommended)
- 15 MB of available hard-disk space (when installing the electronic manuals)
- Windows: Microsoft[®] Internet Explorer 5.0 or later
- Mac OS: Microsoft[®] Internet Explorer 5.0 or later, Safari 1.0 or later

Troubleshooting

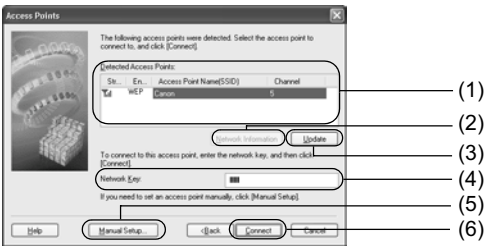
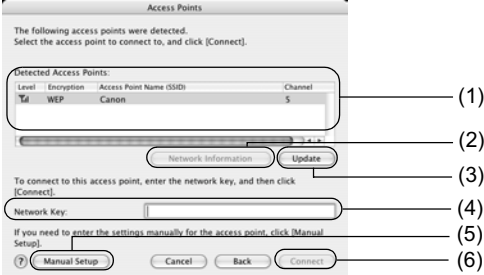
Cause and measures on possible troubles in the setup procedure are explained here.




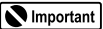
→ **Note**



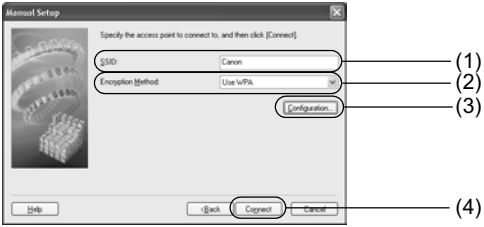
If you do not find a description for your trouble here, refer to “Troubleshooting” on the *User’s Guide* and the *Network Guide*. For details on viewing the guides, see “How to View the User’s Guide/Network Guide” on page 68.

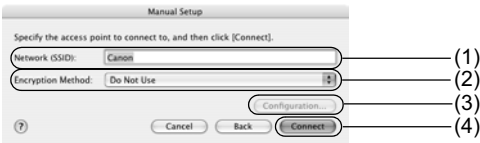
- The computer cannot communicate with the printer or an access point between rooms or floors, page 71
- Cannot set up the printer, page 71
- When encryption (WEP or WPA) is enabled, the printer cannot be set up again, page 71
- The Access Points dialog box is displayed during setup, page 72
- The target access point is not detected, or you want to specify access point settings manually, page 74
- Cannot connect with an access point to which a WEP key is set (You forgot the WEP key), page 75
- How to set a WEP key, page 76
- Cannot connect to the target access point, page 76
- The Set Printer IP Address / Printer IP Address Setup dialog box is displayed during setup, page 77
- Checking the IP address or the MAC address of the printer, page 78
- Checking the IP address of the computer, page 78
- The Printer Network Setup dialog box is displayed during setup, page 79
- The printer cannot communicate with the access point in a wireless LAN, page 80
- Cannot communicate with the printer after applying MAC address filtering or entering a WEP key to the access point, page 80
- No printer is detected after the network settings are changed in Windows, page 81
- The Enter Password / Password Input dialog box is displayed during setup, page 81
- The admin password was forgotten, page 81
- Changing the port name, page 81
- Cannot print out the network setting information, page 81
- Using the printer in a multiple access point setup, page 81
- Re-setting the printer whose setup was canceled halfway, page 82
- Confirming the version of Windows XP, page 82

Problem	Possible Cause and Measures
The computer cannot communicate with the printer or an access point between rooms or floors	Although wireless communication between rooms or floors is possible, the wireless communication quality may become poor. The wall must be made of a material that allows radio waves to pass through. If the wall material prevents communication, set the printer in the same room as the access point.
Cannot set up the printer	<p>Confirm the following:</p> <ul style="list-style-type: none"> • The USB cable is connected to the correct port. • The printer driver is already installed. • The printer is turned on. If it is, turn it off and then turn it on again. • Printing via USB connection is possible. If you cannot print through USB connection, see “Setting Up the Printer and the Computer” on page 16 and connect the USB cable properly. • The firewall feature of a security software may prevent proper setup or communication over a network. When setting up the printer for use over a network, disable the firewall of your security software. Turn it back on when setup is complete. If you are using Windows XP Service Pack 1 or earlier and you have Internet Connection Firewall enabled, a dialog box asking you for confirmation to disable the firewall will appear during setup. Click Yes to disable the firewall. When setup is complete, the firewall will be re-enabled automatically. To confirm the version of your Windows XP, see “Confirming the version of Windows XP” on page 82. Some network configuration programs will enable a firewall by default. Check the settings of any such software. • The printer, the computer, and the access point are on the same network segment. Do not use the printer through a router. <p>Macintosh</p> <ul style="list-style-type: none"> • The priority of the network to be used is set high. If not, select System Preferences - Network and select Network Port Configurations from the Show pop-up menu, and modify the priority of the network.
When encryption (WEP or WPA) is enabled, the printer cannot be set up again	Initialize the printer’s network settings to default (see “Initializing Network Settings” on page 68) and perform setup again with the USB cable connected.

Problem	Possible Cause and Measures
<p>The Access Points dialog box is displayed during setup</p>	<p>The Access Points dialog box is displayed when:</p> <ul style="list-style-type: none"> - No access point is detected. - Multiple access points are detected. - Entry of a network key is necessary to communicate with the target access point. <p>Important</p> <p>If you connect to a network that is not protected with security measures, there is a risk of disclosing data such as your personal information to a third party.</p> <p>Follow the instructions below to detect access points.</p> <ul style="list-style-type: none"> • When no access point is detected It may take several minutes to detect access points. For details, see “The printer cannot communicate with the access point in a wireless LAN” on page 80. • When multiple access points are detected The printer may communicate with other access points used in the vicinity. Select the target access point, then click Connect. You can also click Manual Setup to specify the settings of the target access point manually on the Manual Setup dialog box. <p>Windows</p>  <p>Macintosh</p> 


Problem	Possible Cause and Measures
<p>The Access Points dialog box is displayed during setup (Continued)</p>	<p>(1) Detected Access Points The signal strength, network key (WEP or WPA) usage, network name (SSID), and the used channel are displayed. The signal strength is indicated by the number of bars displayed with the antenna.</p> <p> :Good  :Fair  :Poor</p> <p>Whether a network key is used or not is indicated as follows. Blank: Not used WEP: WEP key used WPA: WPA key used</p> <p>(2) Network Information The Network Information dialog box is displayed to confirm network settings when your access point or your printer cannot be detected automatically during setup for use over the network. This button is enabled when an access point was not detected or could not be connected.</p> <p>(3) Update Click to search for access points again when the target access point is not detected. Make sure that the access point is powered on.</p> <p>(4) Network Key If a password (WEP key) or a WPA key is set to the target access point, enter the pre-shared key or the passphrase in the same format and length as the access point. The network key can be entered when an access point using WEP or EAP/PSK is selected.</p> <p>(5) Manual Setup Click when the target access point is not detected, or to specify settings of the access point manually. The Manual Setup dialog box is displayed. If your access point is using the stealth / closed network feature, specify settings here.</p> <p>(6) Connect Connects to the selected access point.</p> <p> Important</p> <ul style="list-style-type: none"> • When an access point using WPA-802.1x (Windows) or WPA Enterprise (Macintosh) is selected, the Connect button is grayed out and cannot be clicked. • When an access point using WPA-PSK (Windows) or WPA Personal (Macintosh) with type of dynamic encryption set to AES is selected, the Connect button can be clicked but is not operable.


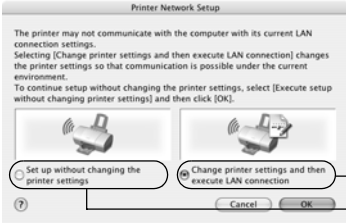
Problem	Possible Cause and Measures
<p>The target access point is not detected, or you want to specify access point settings manually</p>	<p>If the target access point is not detected or if you want to specify access point settings manually, click Manual Setup in the Access Points dialog box.</p> <p> Important</p> <p>If you connect to a network that is not protected with security measures, there is a risk of disclosing data such as your personal information to a third party.</p> <p> Windows</p> <p>Set the target access point and click Connect.</p>  <p>Enter the settings for the target access point.</p> <p>(1) SSID Enter the SSID set to the access point. SSID is also called ESS-ID. For details, refer to the manual of your access point.</p> <p>(2) Encryption Method Select an encryption method from Do Not Use, Use WEP, or Use WPA. When using a network key, communication is encrypted using the string you specified. If the key has been set to the access point but not to the printer, the setting window is displayed. For details on WEP setting, refer to “WEP Details dialog box” on the <i>Network Guide</i>. For details on WPA setting, refer to “Changing the WPA Detailed Settings” on the <i>Network Guide</i>.</p> <p>(3) Configuration The detailed settings dialog box is displayed. WEP or the WPA key selected in Encryption Method can be confirmed and changed.</p> <p>(4) Connect Connects to the specified access point.</p>

Problem	Possible Cause and Measures
<p>The target access point is not detected, or you want to specify access point settings manually (Continued)</p>	<p>Macintosh Set the target access point and click Connect.</p>  <p>Enter the settings for the target access point.</p> <p>(1) Network (SSID) Enter the network ID (SSID) set to the access point. SSID is also called ESS-ID. For details, refer to the manual of your access point.</p> <p>(2) Encryption Method Select an encryption method from Do Not Use, Use Password (WEP), or Use WPA. When using a network key, communication is encrypted using the string you specified. If the key has been set to the access point but not to the printer, the setting window is displayed. For details on WEP setting, refer to “WEP Details dialog box” on the <i>Network Guide</i>. For details on WPA setting, refer to “Changing the WPA Detailed Settings” on the <i>Network Guide</i>.</p> <p>(3) Configuration The detailed settings dialog box is displayed. The WEP or the WPA key selected in Encryption Method can be confirmed and changed.</p> <p>(4) Connect Connects to the specified access point.</p>
<p>Cannot connect with an access point to which a WEP key is set (You forgot the WEP key)</p>	<p>For information on how to set up the access point, refer to the manual provided with the access point. Make sure that the computer and the access point can communicate, then set up the printer to match the settings of the access point.</p>

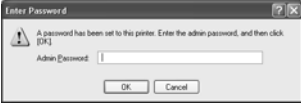


Problem	Possible Cause and Measures
How to set a WEP key	<p>Refer to the manual provided with the access point and check the access point settings.</p> <p>Confirm that the computer and the access point can communicate with each other.</p> <p>Then set up the printer to match the settings of the access point.</p> <p>When using WEP, the key length, key format, the key to use (out of 1 to 4), and the authentication method must match among the access point, the printer, and the computer.</p> <p>For an access point using the WEP method such as the following, use the hexadecimal key format for the printer.</p> <p>Example:</p> <p>Using 64 bit key length, when the string "canon" is entered, an access point generates the following codes.</p> <p>Key 1: C9 42 28 B3 AE</p> <p>Key 2: 87 C0 FB 05 6B</p> <p>Key 3: 9A 15 FB F8 F3</p> <p>Key 4: 62 56 67 58 44</p> <p>To communicate with such an access point, the key to use must be set to the same key number as selected in the access point, and its code must be set to the printer in hexadecimal format.</p> <p>Normally, select Auto for the authentication method. If you want to specify the method manually, select Open System or Shared Key according to the setting of the access point.</p> <p>➔ Note</p> <p>When the AirPort Base Station is used as an access point:</p> <ul style="list-style-type: none"> • To confirm the password (WEP key), use the AirPort Admin Utility. For details, refer to its online help. • Select 64 bit if 40 bit WEP is selected for the key length in the AirPort Base Station.
Cannot connect to the target access point	<p>Confirm the following:</p> <ul style="list-style-type: none"> • The network name / SSID of the target access point and the printer are identical. For information on how to set up a WEP key, see "How to set a WEP key" on page 76. • Infrastructure is selected as the network type. • If a network key is set to the access point, set the printer to match it. • If MAC address filtering is set to the access point, register the MAC address of the printer or disable MAC address filtering. • The wireless channel to be used may be limited depending on wireless network devices installed in the computer. Refer to the manual provided with your computer or your wireless network device. • Make sure that the channel set to the access point is valid to communicate with the computer, confirmed above. If not, change the channel set to the access point. • When connecting to an AirPort Base Station, use alphanumeric characters for the name of the network (SSID). • Make sure that there is no barrier or obstacle between the access point and the printer.

Problem	Possible Cause and Measures
<p>The Set Printer IP Address / Printer IP Address Setup dialog box is displayed during setup</p>	<p>The following dialog box is displayed if no printer was detected on the network. Specify an IP address to detect the target printer.</p> <div data-bbox="597 422 1071 682"> <p>Windows</p> </div> <p>(1) Get IP address automatically Detects the printer automatically. If automatic printer detection fails, check the network settings and your network connection.</p> <p>(2) Use next IP address Select this check box to manually specify the IP address for the printer to detect.</p> <p>IP Address/Subnet Mask/Default Gateway Enter each value to specify a fixed IP address when Use next IP Address is selected.</p> <p>(3) Network Information The Network Information dialog box is displayed to confirm network settings when your access point or your printer cannot be detected automatically during setup for use over the network. This button is enabled when an access point was not detected or could not be connected.</p> <p>(4) Connect Searches for the printer with the specified settings.</p> <div data-bbox="597 1144 1071 1354"> <p>Macintosh</p> </div> <p>(1) TCP/IP Setting Select Get IP address automatically or Use next IP address. Select Get IP address automatically to search for the target printer automatically. If it fails, check the network settings and the network connection.</p> <p>IP Address/Subnet Mask/Router Enter each value to specify a fixed IP address when Use next IP address is selected.</p> <p>(2) Network Information The Network Information dialog box is displayed to confirm network settings when your access point or your printer cannot be detected automatically during setup for use over the network. This button is enabled when an access point was not detected or could not be connected.</p> <p>(3) Connect Searches for the printer with the specified settings.</p>

Problem	Possible Cause and Measures
Checking the IP address or the MAC address of the printer	<p>To check the IP address or the MAC address of the printer, print out the printer setup information or use BJ Network Tool.</p> <p>For information on how to print out the printer network setting information, "Printing and Initializing Network Settings" on page 67.</p> <p>To display the Network Information dialog box, in the BJ Network Tool, select Network Information from the View menu.</p>
Checking the IP address of the computer	<p>To check the IP address assigned to the computer, follow the procedure below.</p> <p>Windows</p> <ul style="list-style-type: none"> • When using Windows XP/Windows 2000 <ol style="list-style-type: none"> 1 From the Start menu, select (All) Programs, Accessories, and then Command Prompt. 2 Enter "ipconfig" and press the Enter key. The IP addresses of the network devices installed in your computer are displayed. • When using Windows Me/Windows 98 <ol style="list-style-type: none"> 1 From the Start menu, select Run. 2 Enter "winipcfg" in the Name text box and click OK. Select the network device to display the IP address. <p>Macintosh</p> <ol style="list-style-type: none"> 1 From the Apple menu, select System Preferences, and then Network. 2 From the Show pop-up menu, select the interface to use. <p> Important</p> <p>Select AirPort when using wireless LAN.</p> <ol style="list-style-type: none"> 3 Select the TCP/IP tab. The currently assigned IP address is displayed.

Problem	Possible Cause and Measures
<p>The Printer Network Setup dialog box is displayed during setup</p>	<p>The Printer Network Setup dialog box is displayed in the following cases.</p> <ul style="list-style-type: none"> - when you are re-setting a printer whose setup was canceled halfway - when you changed the network settings - when you are already using a printer over a wireless LAN <p>If you canceled setup or changed the network settings, perform network setup again.</p> <p>Windows</p>  <p>(1) Change printer setting and then execute LAN connection The printer network settings will be changed to enable communication under the current network settings.</p> <p>(2) Execute setup without changing printer settings Continues computer setup with the settings specified to the printer. Select this when you are not currently connected to a network but want to set up the computer with the settings specified to the printer.</p> <p>➔ Note After setup, confirm that the printer and the computer (or the access point, when using wireless LAN) can communicate with each other. If not, perform network setup again.</p> <p>Macintosh</p>  <p>(1) Change printer settings and then execute LAN connection The printer network settings will be changed to enable communication under the current network settings.</p> <p>(2) Set up without changing the printer settings Continues computer setup with the settings specified to the printer. Select this when you are not currently connected to a wireless LAN but want to set up the computer with the settings specified to the printer.</p> <p>➔ Note After setup, confirm that the printer and the computer (or the access point, when using wireless LAN) can communicate with each other. If not, perform network setup again.</p>

Problem	Possible Cause and Measures
<p>The printer cannot communicate with the access point in a wireless LAN</p>	<ol style="list-style-type: none"> 1 Click Update to search for access points again from the Access Points dialog box. 2 If the access point is still not detected, move the printer closer to the access point or remove any obstacles, and then click Update. 3 If the access point is still not detected, click Manual Setup to specify the settings of the access point in the Manual Setup dialog box, and then click Connect. 4 Make sure that the computer and the access point can communicate with each other. For details, see "Checking if the computer and the printer (access point) can communicate with each other" on the <i>Network Guide</i>. 5 Disconnect the power cord of the access point, plug in the cord again, and then click Update. <ul style="list-style-type: none"> • Access point settings For information on how to modify the settings of the access point, see the manual provided with the access point. When MAC address filtering is set to the access point, register the MAC address of the printer or disable MAC address filtering. When the access point does not permit SSID broadcasting, or if the stealth function / closed network is enabled, enter the network name (SSID), etc, to the printer manually. When an SSID or a network key is set to the access point, enter the identical SSID or network key as those set to the access point. SSID is case-sensitive. For information on how to set WEP, see "How to set a WEP key" on page 76. • Wireless channels Computers with a built-in wireless network card may restrict the wireless channels it can use. Check the channel available to the wireless network card. For information on how to check wireless channel, see the manual provided with the computer or the wireless network card. Make sure that the wireless channel the access point is using is one that the computer supports. If not, change the wireless channel set to the access point to one supported by the computer. • Location Make sure that there is no barrier or obstacle between the access point and the printer.
<p>Cannot communicate with the printer after applying MAC address filtering or entering a WEP key to the access point</p>	<ul style="list-style-type: none"> - Refer to the manual provided with the access point to confirm the access point setting. Make sure that the computer and the access point can communicate with each other under this setting. - If you are performing MAC address filtering at the access point, confirm that the MAC addresses for both the computer and the printer are registered. - If you are using a WEP key, make sure that the key for the computer and the printer matches that set to the access point. - Besides the WEP key itself, the key length, key format, the key ID to use, and the authentication method must match among the printer, the access point, and the computer. - Normally, select Auto for the authentication method. If you want to specify the method manually, select Open System or Shared Key according to the setting of the access point.

Problem	Possible Cause and Measures
<p>Windows No printer is detected after the network settings are changed in Windows</p>	<p>Wait until the IP address is assigned to the computer. You may need to restart your computer. When you are using Windows Me or Windows 98, you need to restart the computer. Search for the printer again after confirming a valid IP address is assigned to the computer.</p>
<p>The Enter Password / Password Input dialog box is displayed during setup</p>	<p>The following dialog box is displayed if an administrator password is set to the printer which has already been set up.</p> <div style="display: flex; justify-content: space-around;"> <div data-bbox="607 604 906 760"> <p>Windows</p>  </div> <div data-bbox="935 604 1279 772"> <p>Macintosh</p>  </div> </div> <p>Admin Password</p> <p>Enter the administrator password you have set. The administrator password consists of alphanumeric characters and is no longer than 32 characters. The password is case-sensitive. For security, your entry will be displayed by “*” (asterisks) for Windows and “•” (bullets) for Macintosh.</p>
<p>The admin password was forgotten</p>	<p>Restore the printer setting to factory default. All settings previously set will be lost after initialization. Set up the printer again to use it. For details, see “Printing and Initializing Network Settings” on page 67.</p>
<p>Windows Changing the port name</p>	<p>To change the port name, click Set Port Name in the Add Port dialog box. The Set Port Name dialog box is displayed, where you specify the port name. When you have 2 or more printers, you may want to change the port name for identification.</p> <div data-bbox="604 1167 837 1243">  </div> <p>Port Name</p> <p>Port names should consist of alphanumeric characters and be no longer than 24 characters (12 characters under Windows Me or Windows 98), excluding the prefix. The port name includes the fixed prefix “CNBJNP_”, which you do not need to enter.</p>
<p>Cannot print out the network setting information</p>	<p>See “Printing and Initializing Network Settings” on page 67 to print out printer setting information. If it fails, use BJ Network Tool or Network Configuration to confirm the network settings from the computer.</p>
<p>Using the printer in a multiple access point setup</p>	<p>Confirm the following;</p> <ul style="list-style-type: none"> • The access point to be used can communicate with the printer and the computer. • Under Windows XP, the priority of the access point is set to highest in the Preferred networks list displayed by clicking the Wireless Networks tab in the Wireless Network Connection Properties dialog box. • The wireless channel of the access point is far enough away with those of other access points. <p>For more information, see the manual provided with the access point.</p>

Problem	Possible Cause and Measures
Re-setting the printer whose setup was canceled halfway	Restore the printer to the factory settings and set up the printer again. For details, see "Printing and Initializing Network Settings" on page 67. For setup procedures, see "Setting Up the Printer and the Computer" on page 16.
Confirming the version of Windows XP	<p>If you are using Windows XP, you may need to confirm your system version to configure the network setting of your computer.</p> <p>To check the version of Windows XP, follow these steps.</p> <ol style="list-style-type: none"> 1 Right click My Computer from the Start menu and select Properties. System Properties will be displayed. 2 Confirm that the General tab is displayed. 3 Confirm your Windows XP version under System.

Conformity declaration for R&TTE



English	Hereby, Canon, declares that this PIXMA iP4000R is in compliance with the essential requirements and other relevant provisions of Directive 1999/5/EC.
Finnish	Canon vakuuttaa täten että PIXMA iP4000R tyyppinen laite on direktiivin 1999/5/EY oleellisten vaatimusten ja sitä koskevien direktiivin muiden ehtojen mukainen.
Dutch	Hierbij verklaart Canon dat het toestel PIXMA iP4000R in overeenstemming is met de essentiële eisen en de andere relevante bepalingen van richtlijn 1999/5/EG
	Bij deze verklaart Canon dat deze PIXMA iP4000R voldoet aan de essentiële eisen en aan de overige relevante bepalingen van Richtlijn 1999/5/EC.
French	Par la présente Canon déclare que l'appareil PIXMA iP4000R est conforme aux exigences essentielles et aux autres dispositions pertinentes de la directive 1999/5/CE
	Par la présente, Canon déclare que ce PIXMA iP4000R est conforme aux exigences essentielles et aux autres dispositions de la directive 1999/5/CE qui lui sont applicables
Swedish	Härmed intygar Canon att denna PIXMA iP4000R står i överensstämmelse med de väsentliga egenskapskrav och övriga relevanta bestämmelser som framgår av direktiv 1999/5/EG.
Danish	Undertegnede Canon erklærer herved, at følgende udstyr PIXMA iP4000R overholder de væsentlige krav og øvrige relevante krav i direktiv 1999/5/EF
German	Hiermit erkläre Canon, dass sich dieser/diese/dieses PIXMA iP4000R in Übereinstimmung mit den grundlegenden Anforderungen und den anderen relevanten Vorschriften der Richtlinie 1999/5/EG befindet". (BMWi)
	Hiermit erkläre Canon die Übereinstimmung des Gerätes PIXMA iP4000R mit den grundlegenden Anforderungen und den anderen relevanten Festlegungen der Richtlinie 1999/5/EG. (Wien)

Greek	ΜΕ ΤΗΝ ΠΑΡΟΥΣΑ Canon ΔΗΛΩΝΕΙ ΟΤΙ PIXMA iP4000R ΣΥΜΜΟΡΦΩΝΕΤΑΙ ΠΡΟΣ ΤΙΣ ΟΥΣΙΩΔΕΙΣ ΑΠΑΙΤΗΣΕΙΣ ΚΑΙ ΤΙΣ ΛΟΙΠΕΣ ΣΧΕΤΙΚΕΣ ΔΙΑΤΑΞΕΙΣ ΤΗΣ ΟΔΗΓΙΑΣ 1999/5/ΕΚ
Italian	Con la presente Canon dichiara che questo PIXMA iP4000R è conforme ai requisiti essenziali ed alle altre disposizioni pertinenti stabilite dalla direttiva 1999/5/CE.
Spanish	Por medio de la presente Canon declara que el PIXMA iP4000R cumple con los requisitos esenciales y cualesquiera otras disposiciones aplicables o exigibles de la Directiva 1999/5/CE
Portuguese	Canon declara que este PIXMA iP4000R está conforme com os requisitos essenciais e outras disposições da Directiva 1999/5/CE.
Malti	Hawnhekk, Canon, jiddikjara li dan PIXMA iP4000R jikkonforma mal-ħtiġijiet essenzjali u ma provvedimenti oħrajn relevanti li hemm fid-Dirrettiva 1999/5/EC

Regulatory Information

■ For 110-120V, 50/60Hz model

Color Printer Model: K10245 (Contains IC 498C-K30242)

This device complies with Part 15 of the FCC Rules. Operation is subject to the following two conditions: (1) This device may not cause harmful interference, and (2) this device must accept any interference received, including interference that may cause undesired operation.

Note: This equipment has been tested and found to comply with the limits for a Class B digital device, pursuant to Part 15 of the FCC Rules. These limits are designed to provide reasonable protection against harmful interference in a residential installation. This equipment generates, uses and can radiate radio frequency energy and, if not installed and used in accordance with the instructions, may cause harmful interference to radio communications.

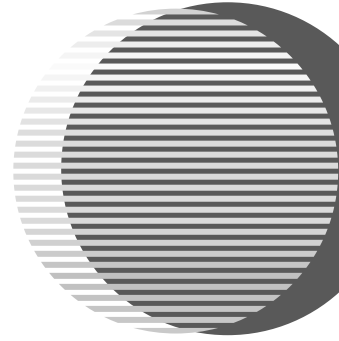
However, there is no guarantee that interference will not occur in a particular installation. If this equipment does cause harmful interference to radio or television reception, which can be determined by turning the equipment off and on, the user is encouraged to try to correct the interference by one or more of the following measures:

- Reorient or relocate the receiving antenna.
- Increase the separation between the equipment and receiver.
- Connect the equipment into an outlet on a circuit different from that to which the receiver is connected.
- Consult the dealer or an experienced radio/TV technician for help.

Use of a shielded cable is required to comply with Class B limits in Subpart B of Part 15 of the FCC Rules.

Do not make any changes or modifications to the equipment unless otherwise specified in the manual. If such changes or modifications should be made, you could be required to stop operation of the equipment.

Canon U.S.A., Inc.
One Canon Plaza
Lake Success, NY 11042
1-516-328-5600



The following ink tanks are compatible with iP4000R.
For details on ink tank replacement, refer to "Print Head Maintenance" in this guide.

