

**Canon**

Mini Photo Printer  
User Manual



***ivy***

# CONTENTS

## SAFETY INFORMATION

---

## PACKAGE CONTENT

---

## PRINTER SETUP

- A) Charge Printer
- B) Power On
- C) Load Paper



## INSTALLING APP

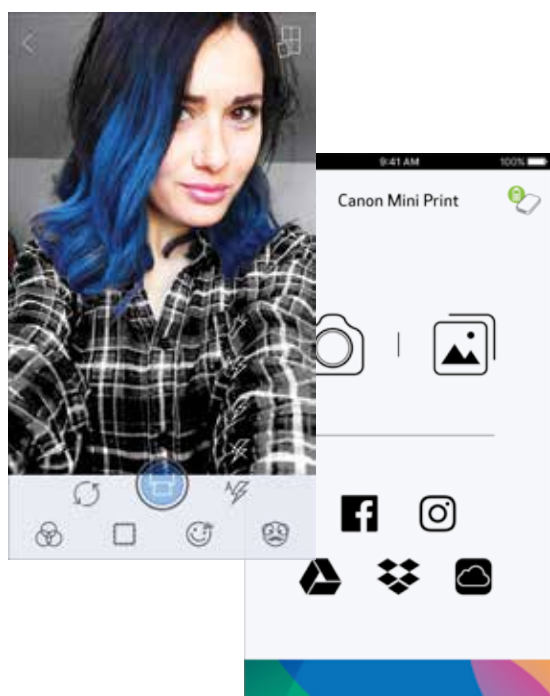
---

## PARING MOBILE DEVICE & CANON MINI PRINT

---

## USER INTERFACE

- Home Screen
- Main Menu
- Camera Mode
- Photo Gallery
- Printing Photos
- Share Photos
- Save/Delete Photos
- Send to Mini Print



## SPECIFICATIONS

---

# SAFETY INFORMATION

## READ BEFORE USE

Please read the following instructions and safety precautions before using the Printer.

For regulatory and additional safety information, refer to the Regulation and Warranty Information sheet included in your printer package contents.

## ABOUT SYMBOLS



### CAUTION

Indicates information that if ignored, could result in accidental injury caused by improper use of the equipment. These must be observed for safe operation.



### NOTE

Instructions or content are important and must be followed accordingly.



### NOTE

---

- Do not use or leave the product under direct sunlight. Also avoid areas subject to rapid temperature changes, high humidity, dust and dirt.
- When operating in extreme weather, the printer might not print. Let the printer temperature adjust to recommended operating temperature of 59° to 90°F (15° to 32°C), before attempting to print again.
- When charging, please charge the printer at the recommended temperature of 59° to 90°F (15° to 32°C).



### CAUTION

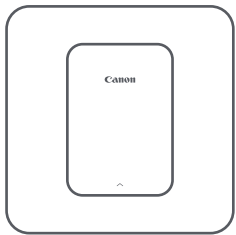
---

- In areas with low humidity, the printer may build up a static electric charge. Take precautions before handling the printer.
- Keep the printer away from liquids or containers of liquids.
- Keep the ventilation openings clear of any objects that could block them.
- Do not under any circumstances dismantle the printer. If the product is not functioning properly, please contact the dealer you purchased this product from or Canon Service & Support at 1-800-652-2666.
- Do not improperly dispose of the product as it may cause personal injury or harm. Please dispose of the product in accordance with local regulations.
- Do not handle near Medical Electrical Equipment. Weak magnetism is emitted by this product. Do not stand near implanted electronic devices, such as a cardiac pacemaker. Please see your doctor if the printer does come close to such a device.
- Disassembling the battery may cause leakage, explosion, damage or personal injury.
- Do not use the printer if the battery or product has swelled.
- Never expose the battery to high temperature, direct heat, or dispose by incineration.

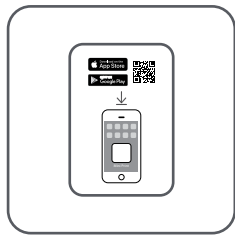
# PACKAGE CONTENT



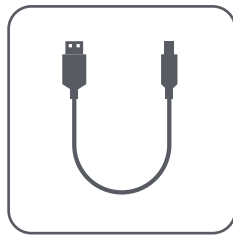
## SUPPLIED ITEMS



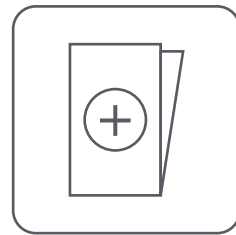
Mini Photo Printer



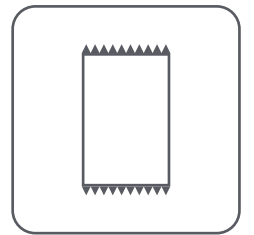
Quick Start Guide



USB Cable

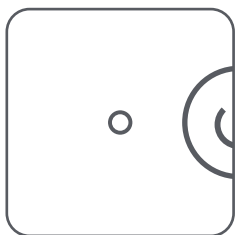


Regulation and  
Warranty  
Information sheet

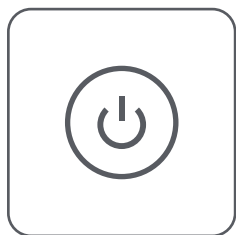


CANON ZINK™  
Photo Paper  
(10 sheets)

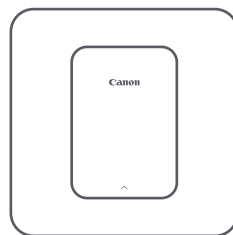
## PRODUCT FEATURES



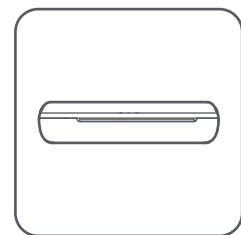
Power LED light



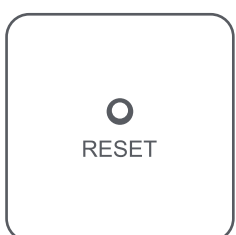
Power button



Top cover



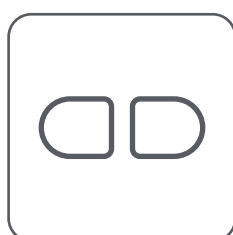
Paper output slot



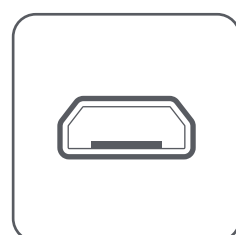
Reset button



Charging LED light



Wristband eyelet

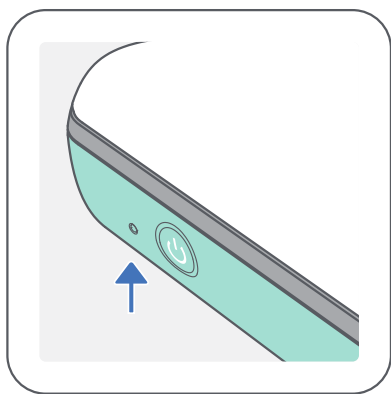


USB port  
(for charging)



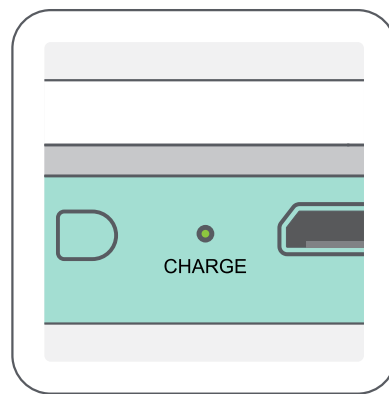
Paper tray

## POWER & CHARGING - LED Indicator Lights



### POWER

- **White** – Printer is powered on
- ☀ **White flashing** – Printing / Processing / Cooling
- ☀ **Red flashing** – No paper / Cover open / Paper jam / Low battery / storage full / other errors
- **Red** – Firmware updating



### CHARGING

- **Red** - Charging
- **Green** - Charge completed
- ☀ **Red & Green flashing** alternatively - Charging error



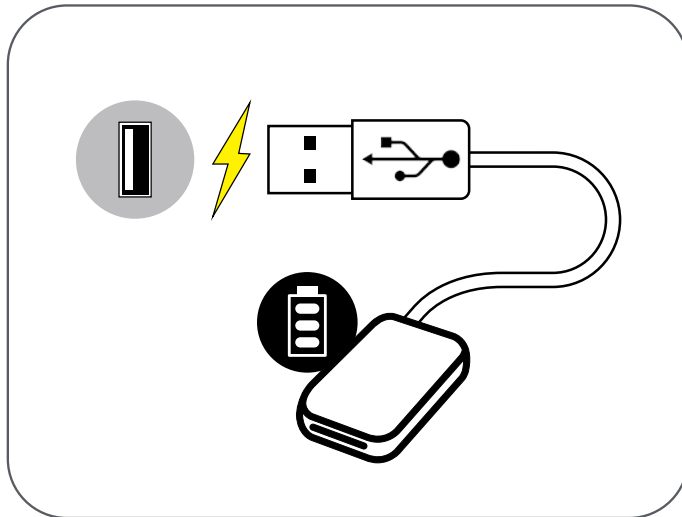
## NOTE

### MAINTAINING YOUR CANON MINI PRINTER

- Use a soft, dry cloth to clean the product. Do not clean with a damp cloth or volatile liquids such as paint thinner.
- Keep the top cover closed to avoid dust and other particles from entering the inside of your printer.
- Use and keep your printer in the recommended environment of 59° to 90° F (15° to 32° C) and 40-55% relative humidity.
- Keep your printer firmware up-to-date. To check if your firmware needs to be upgraded, open the Canon Mini Print app, go to the Main Menu > Printer Settings > then tap "Upgrade Check".  
*-- Make sure your mobile device has a internet connection before checking. If you need to upgrade/update the firmware, your printer must be charged to 50% or higher or connected to a power source.*
- Make sure you're using the latest Canon Mini Print app version. If your apps don't automatically update, go to your app store check if you need to update.

# PRINTER SETUP

## A) CHARGE PRINTER



Printer uses a built-in battery. Before using the printer, fully charge the battery using the USB cable provided.

- ① Insert the smaller end of the supplied USB cable into the Printer and the other end into a chargeable USB adapter.
- ② The charging LED light will turn red to indicate charging.
- ③ Once fully charged, the charging LED will turn green.

-- Operating time may vary depending on the battery status, operational status and environment conditions.

### Battery Status Icon (shown in App)

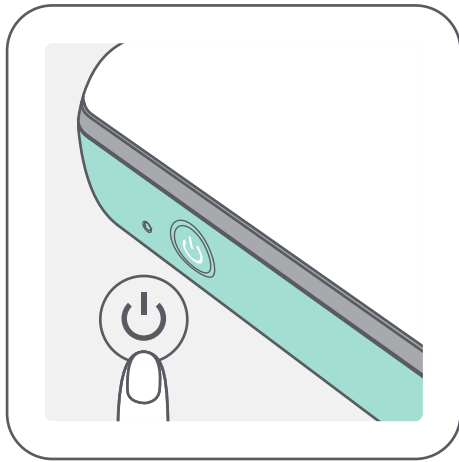


## NOTE

### HANDLE THE USB CABLE WITH CARE WHILE CHARGING

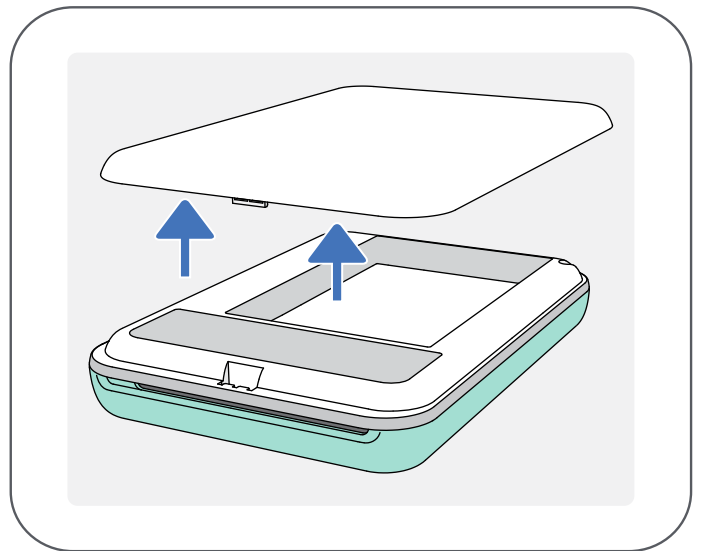
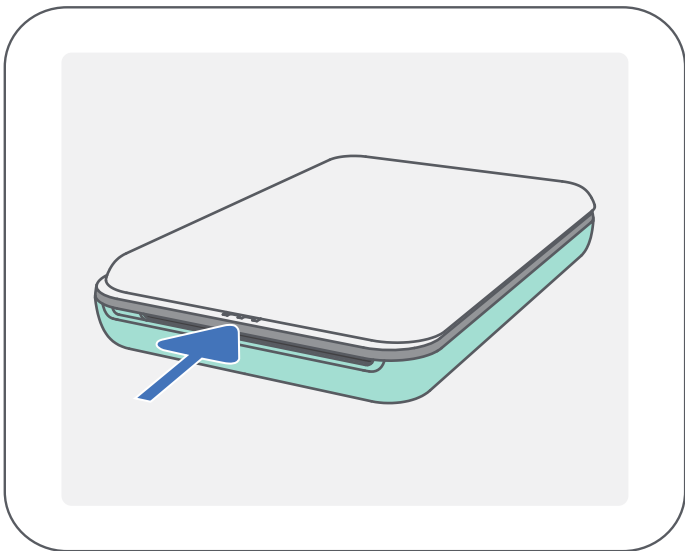
- Do not place any heavy objects on top of the cable.
- Do not place the USB cable near heat.
- Do not scratch, process or damage, screw or pull hard on the cable.
- Do not plug or unplug the cable with wet hands.
- Avoid too high/too low temperature or humid condition.
- Please unplug the USB cable from power source after charging.
- Please use supplied USB cable for charging.

## B) POWER ON

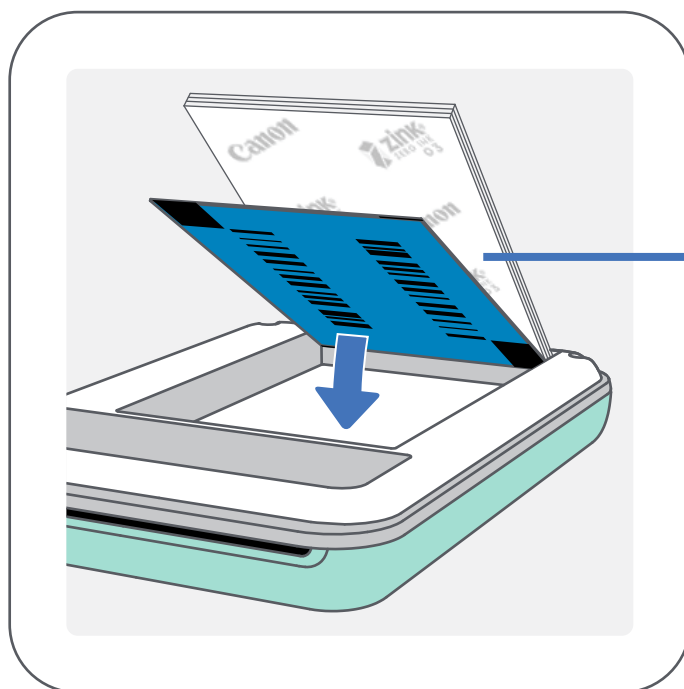


- ① Press and hold the Power button (⏻) until the LED indicator light turns on.  
-- The LED indicator will flash as the printer is powering on.
- ② When the LED indicator turns to a steady white light, the printer is ready to print.

## C) LOAD PAPER



- ① Remove the top cover by sliding it forward in the direction of the arrow.
- ② Open a single pouch of photo paper (10 sheets + blue SMART SHEET™).



*Blue SMART SHEET™  
on bottom with photo  
papers on top.  
All logos facing down.*

- ③ Place all 10 photo paper sheets and the one SMART SHEET™ into the photo paper compartment.  
-- Stack the photo paper on top of the blue SMART SHEET™, making sure the blue barcode and the photo paper logos are facing down.
- ④ Place the top cover back onto the printer. It should click into place when closed properly.  
-- The blue SMART SHEET™ will be sent through the printer automatically before the first print.



## NOTE

---

### WHEN USING PAPER

- Only load 10 ZINK™ photo paper sheets and 1 SMART SHEET™. Do not load more as it can result in paper jams or printing errors.
- For optimal print results, use ZINK™ photo paper for Canon IVY printers.  
*--You may purchase additional photo papers within the Canon Mini Print App by tapping "Buy Paper" in the main menu.*
- If there is a paper jam, simply turn the printer OFF and ON to automatically clear the paper jam. Don't try to pull the paper out.
- When the printer is printing, don't pull or tug on the photo paper.
- Handle photo paper carefully to avoid damage or bending.
- Keep the paper clean when loading. If paper is dirty or damaged it may result in a paper or print error.
- Don't open a new pouch of paper until you are ready to load into your printer.
- Don't expose photo paper to direct sunlight or moisture.
- Don't leave your photo paper in an area where the temperature or humidity is out of the suggested conditions indicated on the pouch. It may reduce the quality of the printed photo.

### ABOUT THE SMART SHEET™

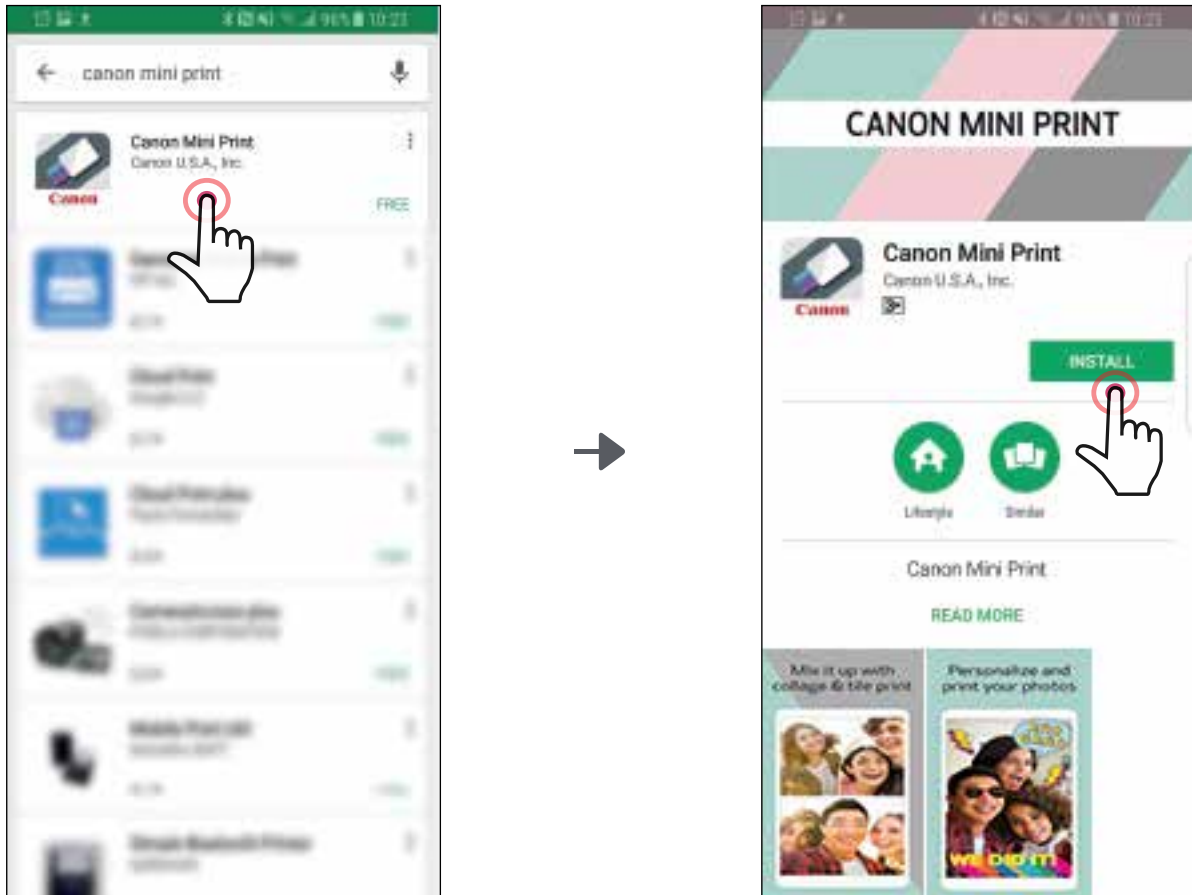
- Each pouch of photo paper contains 10 sheets of photo paper and 1 blue SMART SHEET™.
- Load the SMART SHEET™ and photo paper from within the same pouch for optimal print quality. Each SMART SHEET™ is specifically tuned for the pouch of paper it is contained in.
- The SMART SHEET™ will be sent through the printer automatically before the first print to clean and the printer and optimize print quality for that specific paper pouch (10 sheets).
- Keep the SMART SHEET™ and only discard after you have printed all 10 sheets of photo paper in the pouch. If print quality is not as expected, you can reuse the SMART SHEET™ if the paper is still from the same pouch (simply slide the SMART SHEET™ with its barcode-side down underneath the remaining photo paper).
- Using a SMART SHEET™ from another pouch may result in reduced print quality.



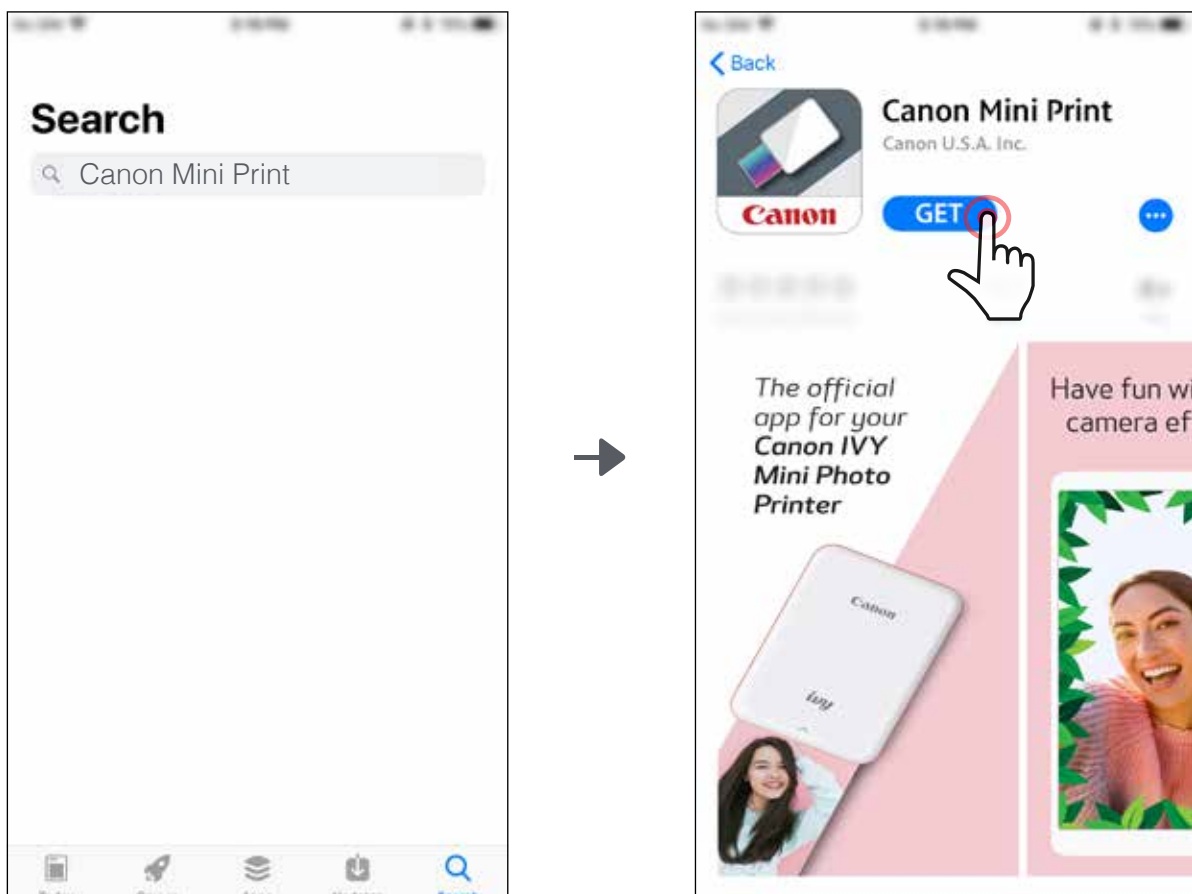
# INSTALLING APP

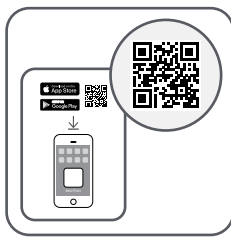
## OPTION ① SEARCH FOR "Canon Mini Print" IN APP STORES

For Android™ - from Google Play™



For iOS® - from the App Store®

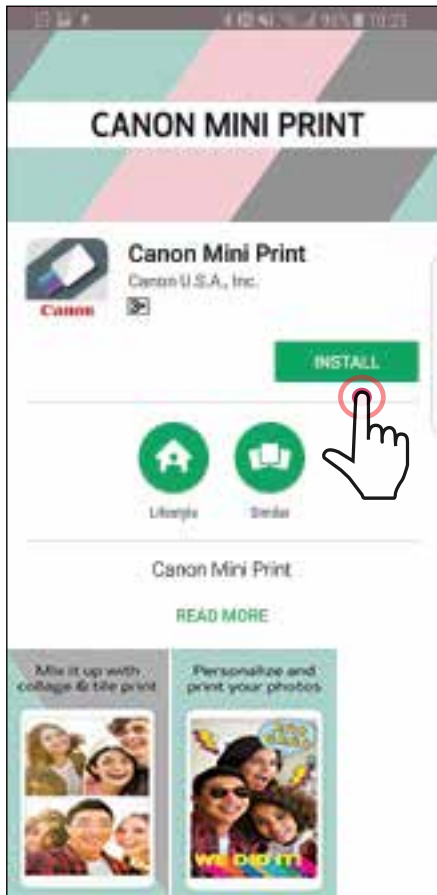




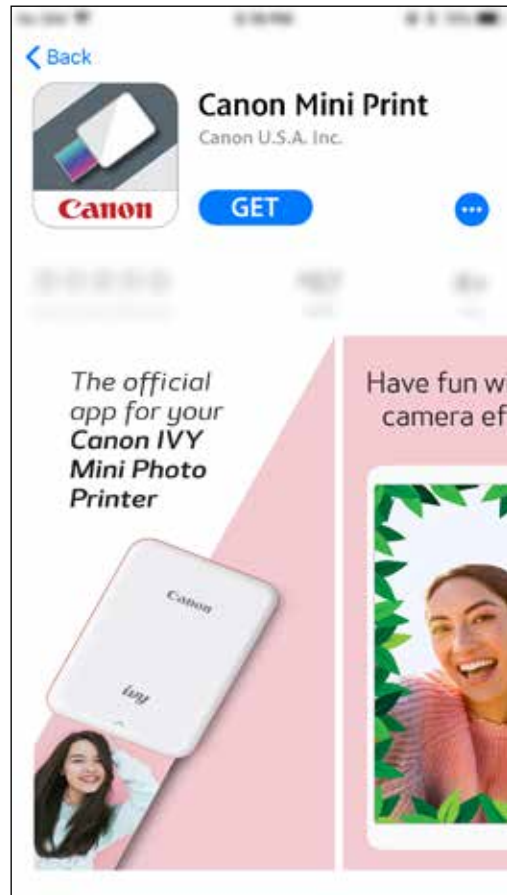
## OPTION ②

USING QR CODE - SCAN THE QR CODE ON THE "Quick Start Guide"

For Android



For iOS

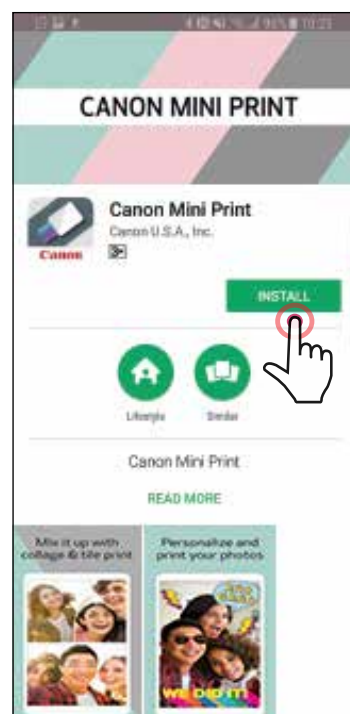
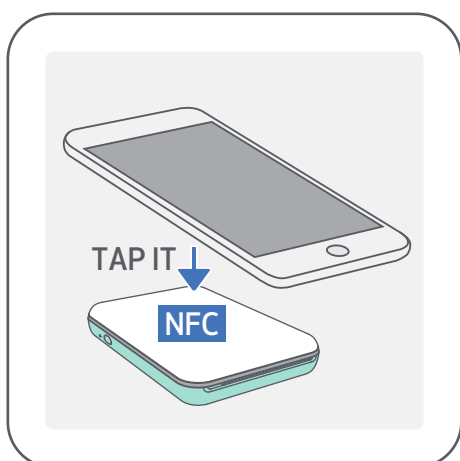


## OPTION ③

In your device browser GO TO <https://app.canonminiprint.com/>

## OPTION ④

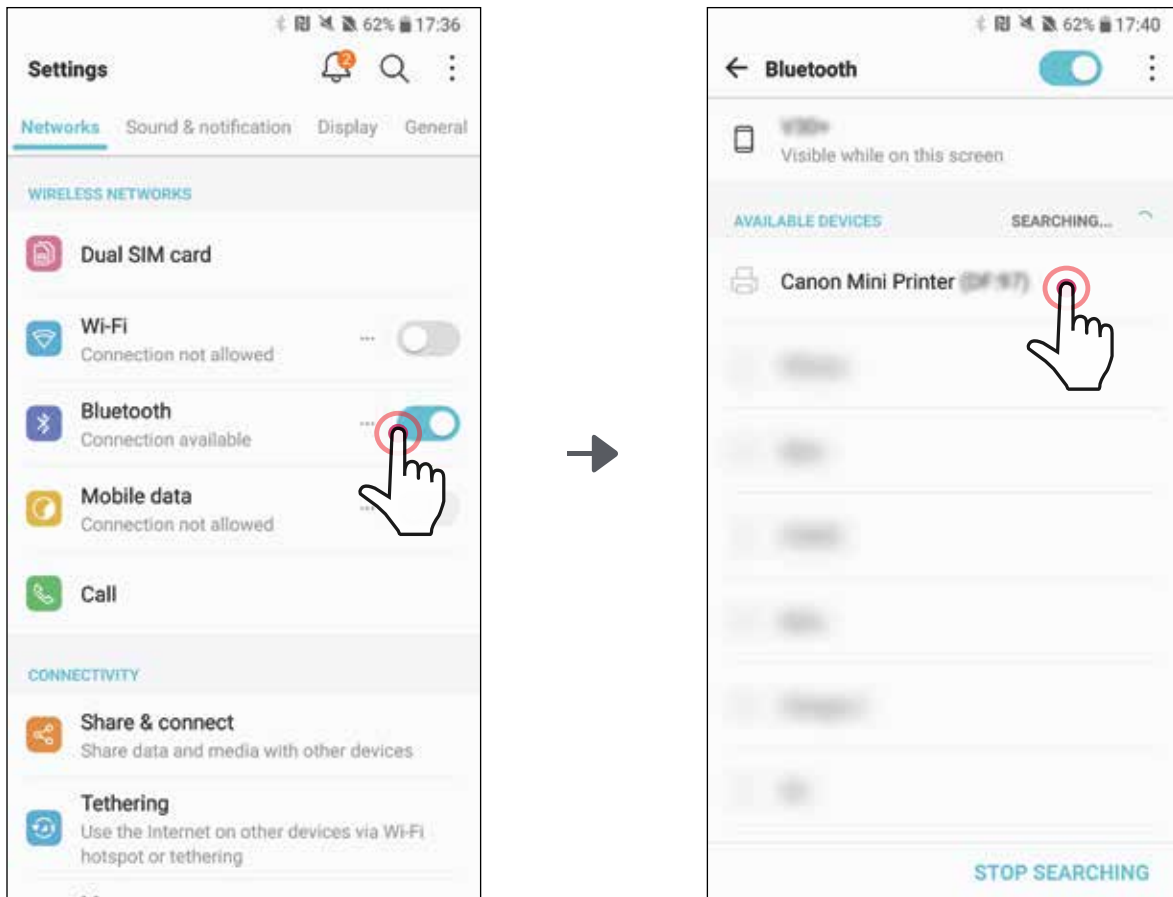
USING NFC For Android ONLY



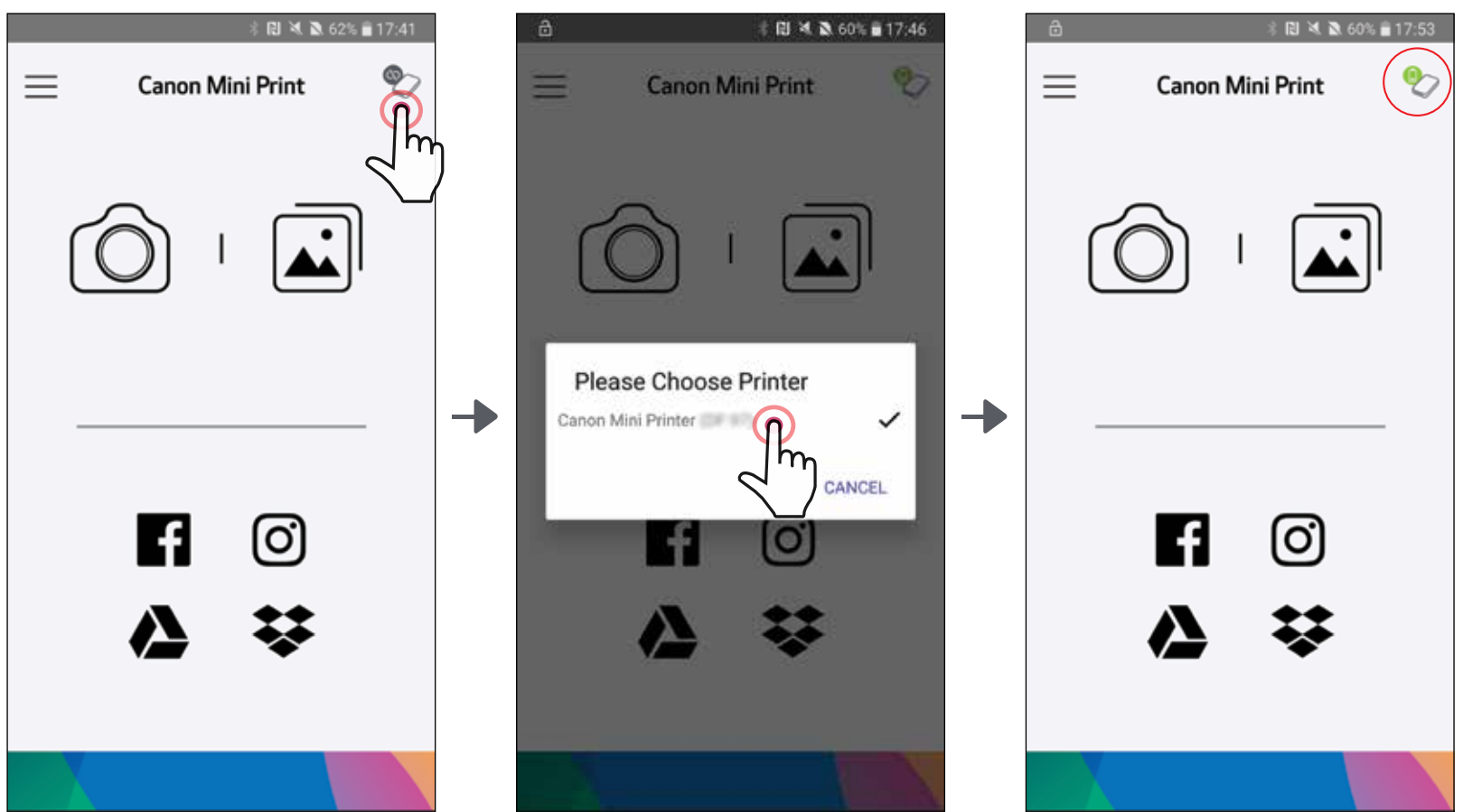
# PAIRING MOBILE DEVICE & CANON MINI PRINTER

## FOR Android

- ① Turn on the printer by pressing and holding the Power button until the LED indicator light turns on.
- ② Open mobile device "Settings" to enable Bluetooth and pair it with the printer.



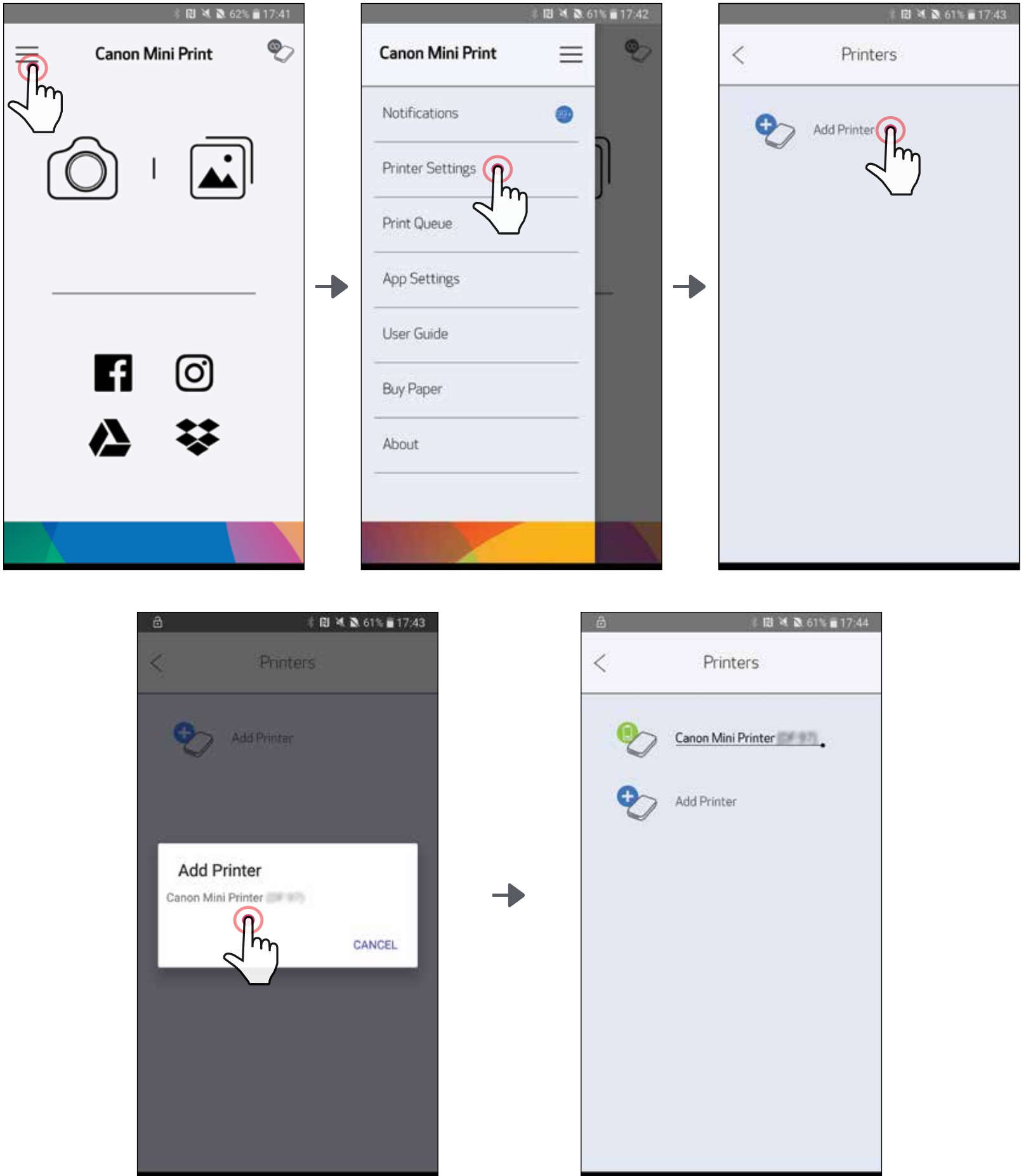
- ③ **OPTION A** - Add the printer to the app. Tap on the icon on the top right and choose your printer.  
*The icon will change to indicate battery level when connected.*



—OR—

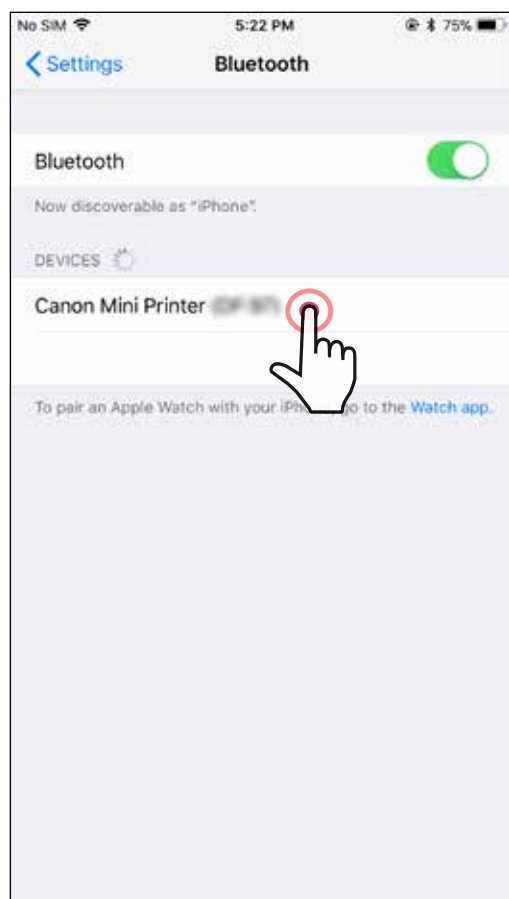
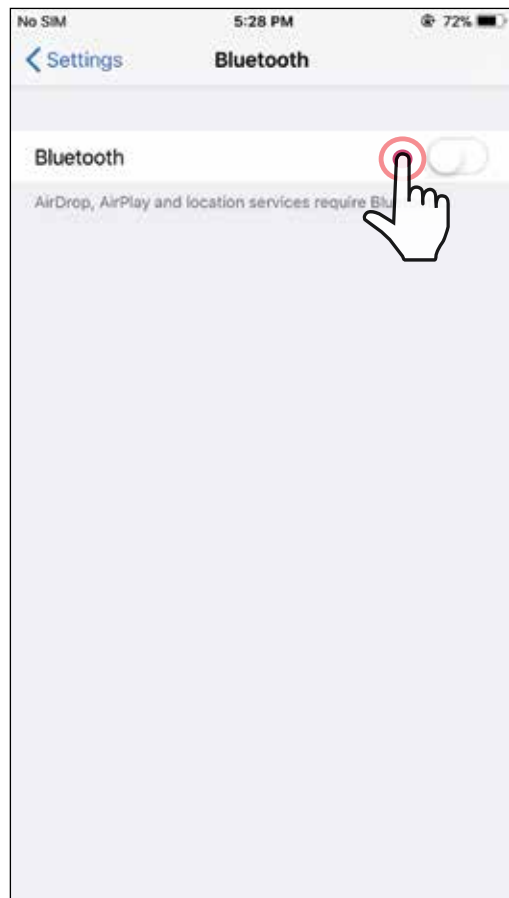
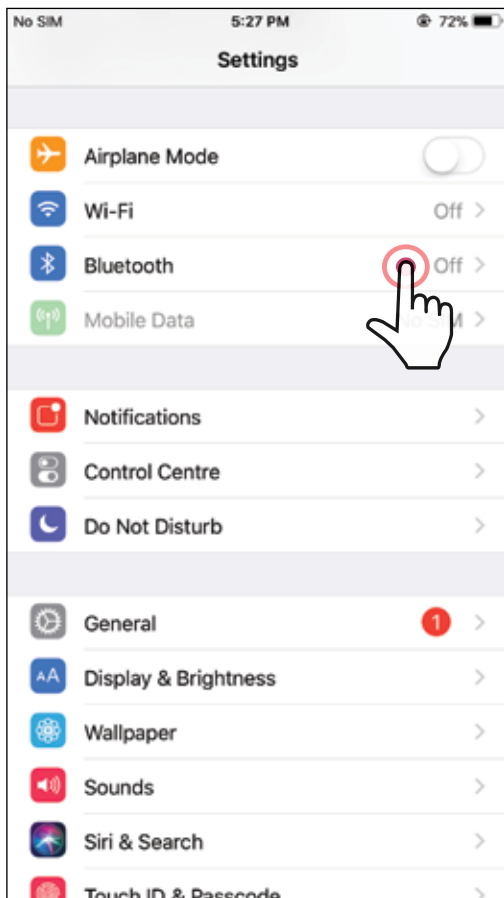
- ③ **OPTION B** - Add the printer to the app. Go to “Printer Settings” in the main menu, tap “Add Printer” and choose your printer.

*Your printer will appear in the “Printers” list and the icon will change to indicate battery level when connected.*



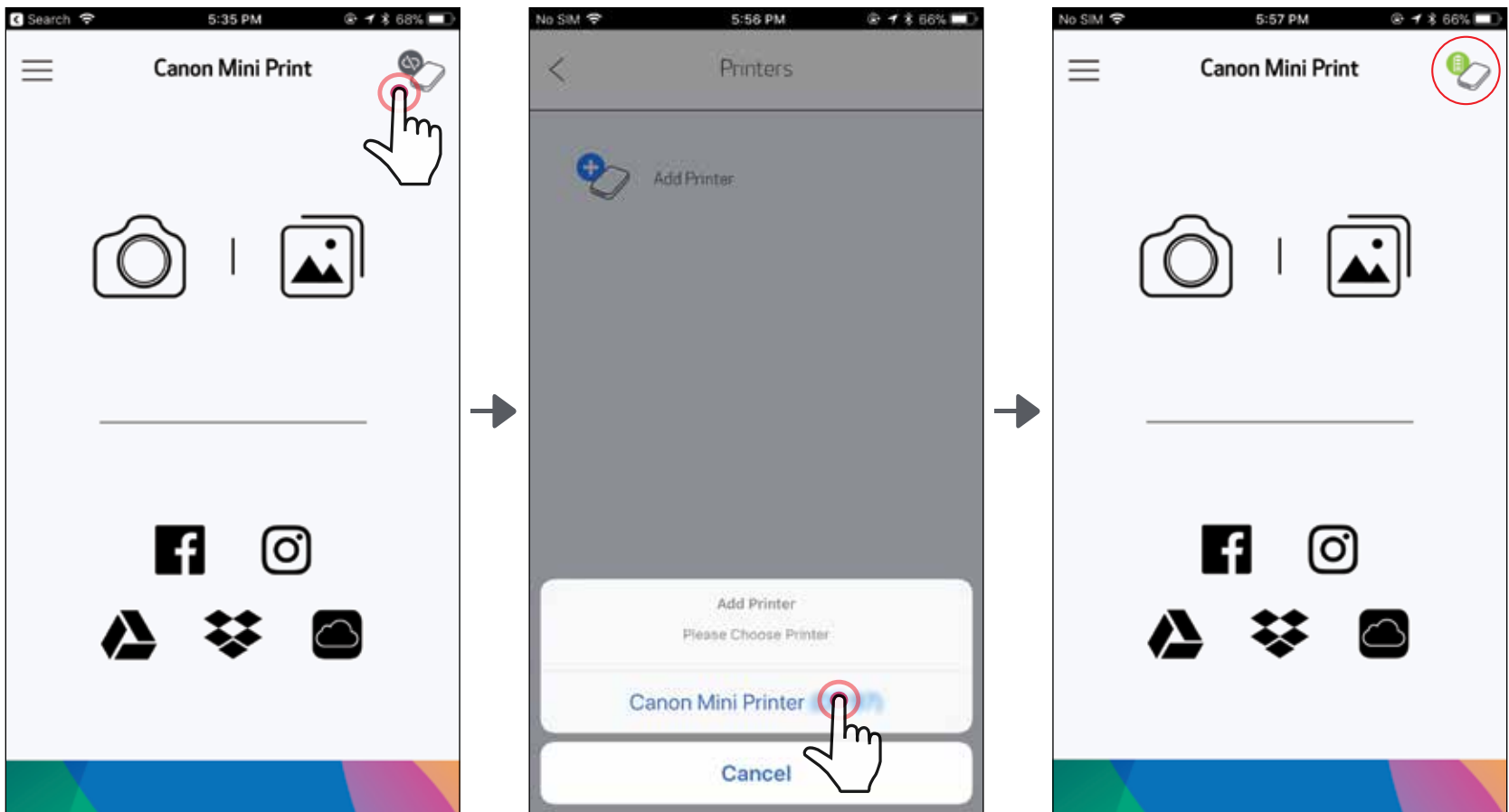
# FOR iOS

- ① Turn on the printer by pressing and holding the Power button until the LED indicator light turns on.
- ② Open mobile device "Settings" to enable Bluetooth and pair it with the printer.



③ **OPTION A** - Add the printer to the app. Tap on the icon on the top right and choose your printer.

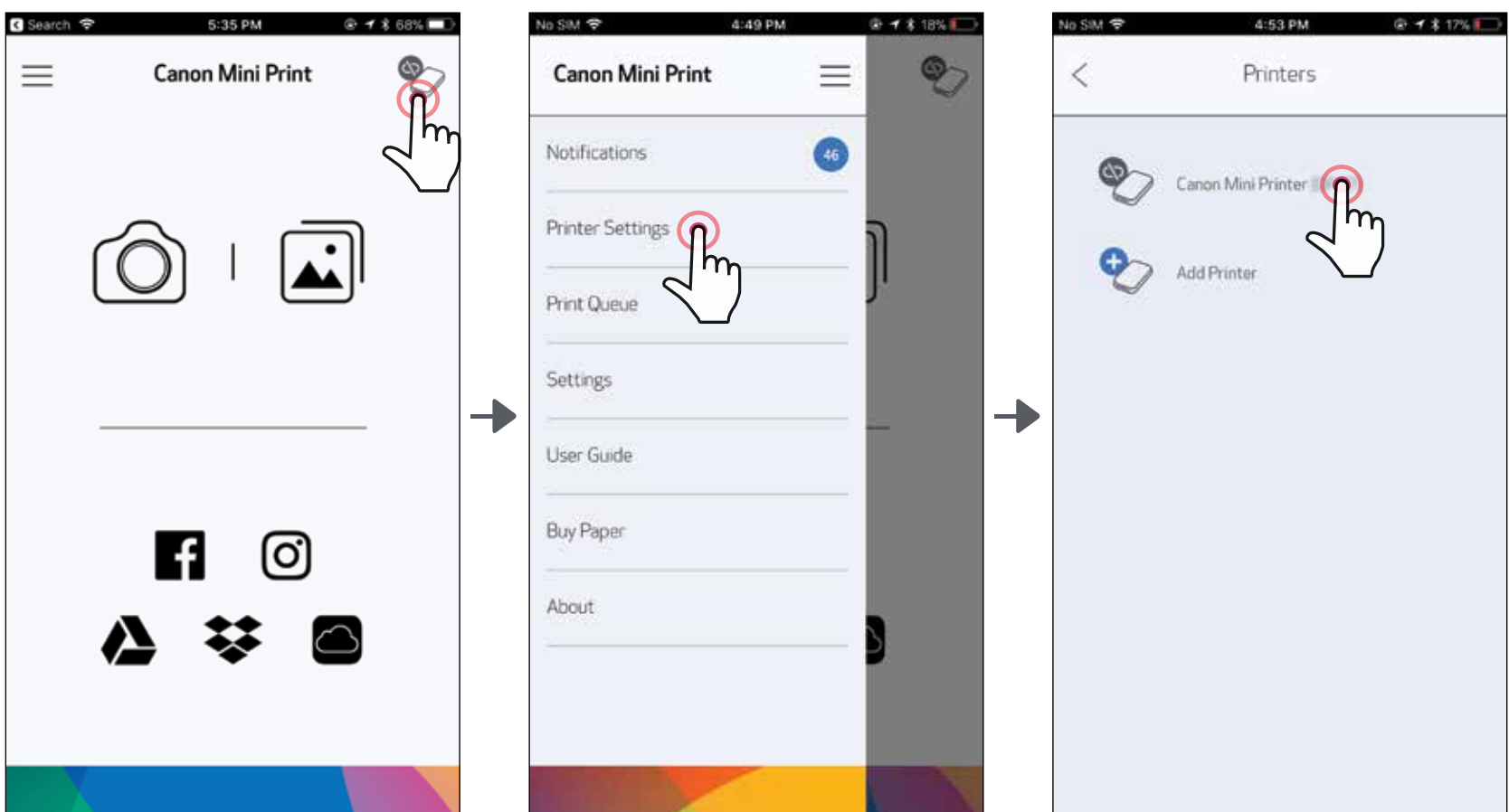
*The icon will change to indicate battery level when connected.*



—OR—

③ **OPTION B** - Add the printer to the app. Go to "Printer Settings" in the main menu, tap "Add Printer" and choose your printer.

*Your printer will appear in the "Printers" list and the icon will change to indicate battery level when connected.*



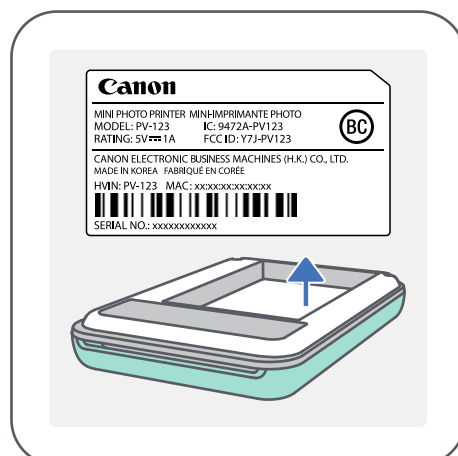
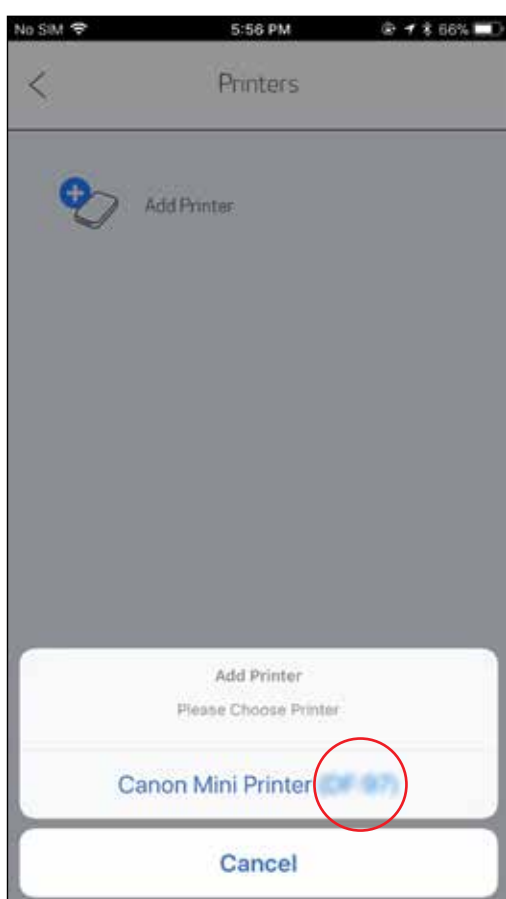
## FOR NFC (Android only)

- ① On your mobile device, ensure that NFC and Bluetooth are enabled.
- ② Place your mobile device on top of the printer.
- ③ The printer will pair automatically with the mobile device.



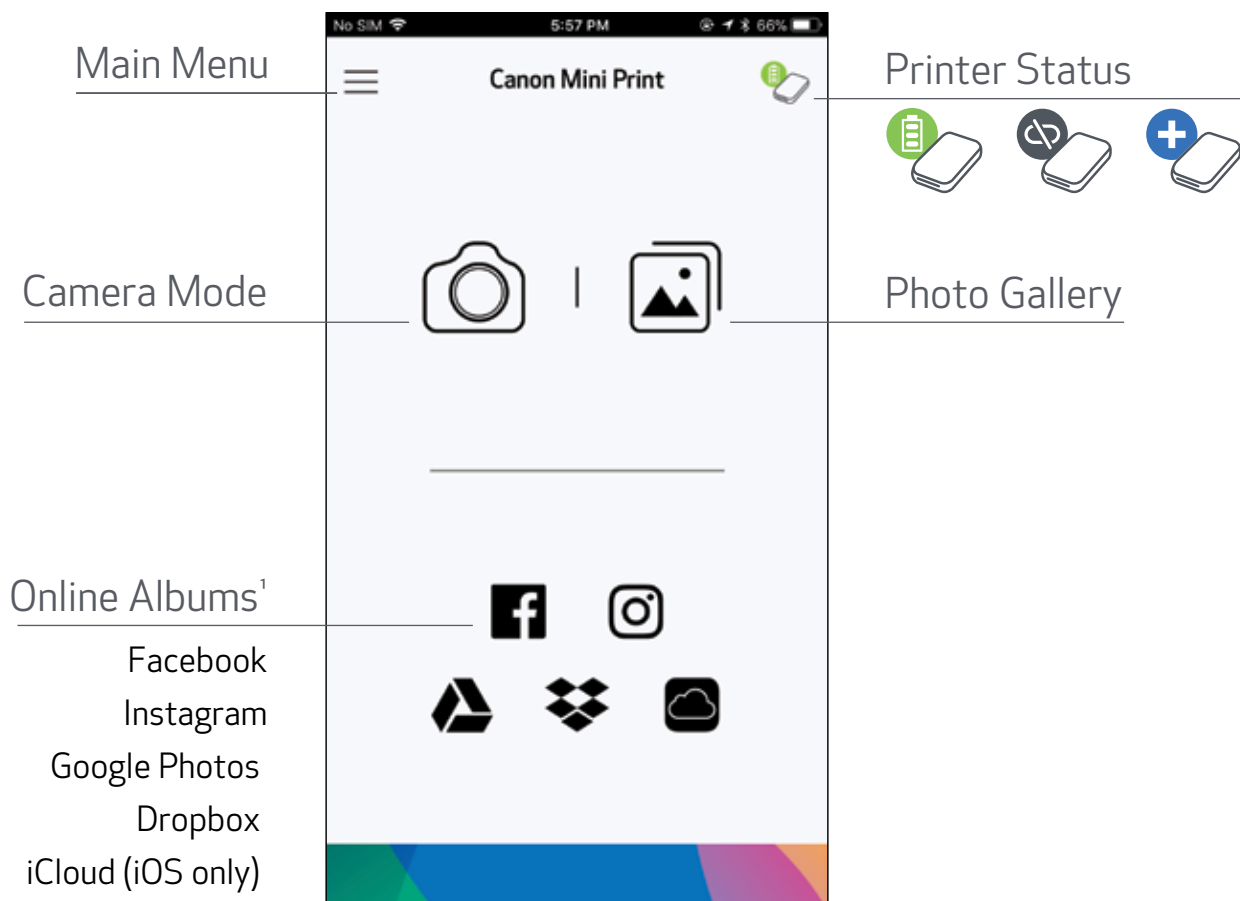
### About Pairing

- One printer can be paired with only one iOS/Android device.
- One iOS/Android device can be connected to multiple printers.
- Bluetooth searching and transferring may fail depending on the environment. Check the Bluetooth condition on your mobile device and try again.
- Search for and pair a printer named as "Canon Mini Printer (xx:xx)". Match the last 4 digits (xx:xx) as shown on the label inside the printer.

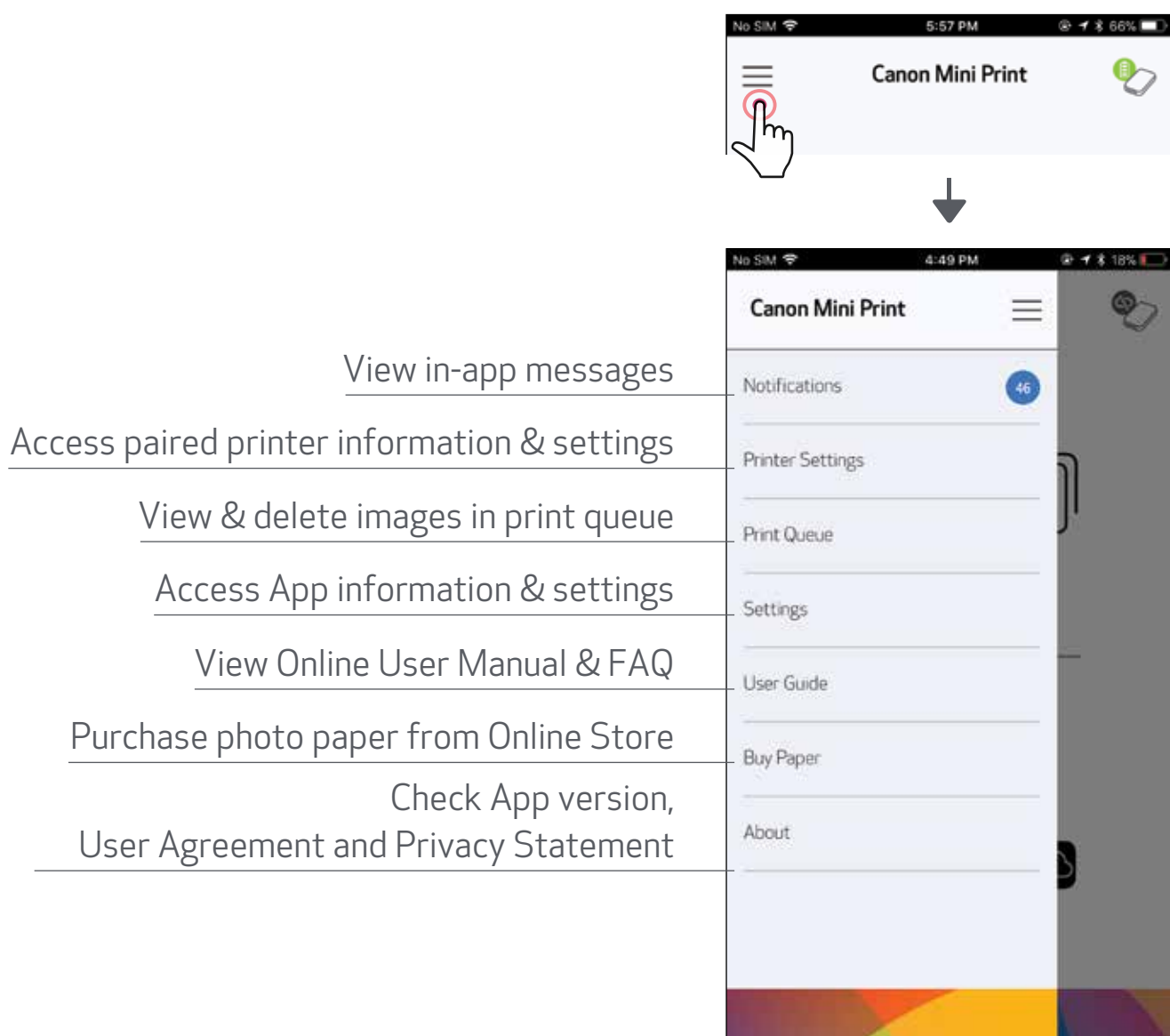


# USER INTERFACE

## HOME SCREEN





## MAIN MENU

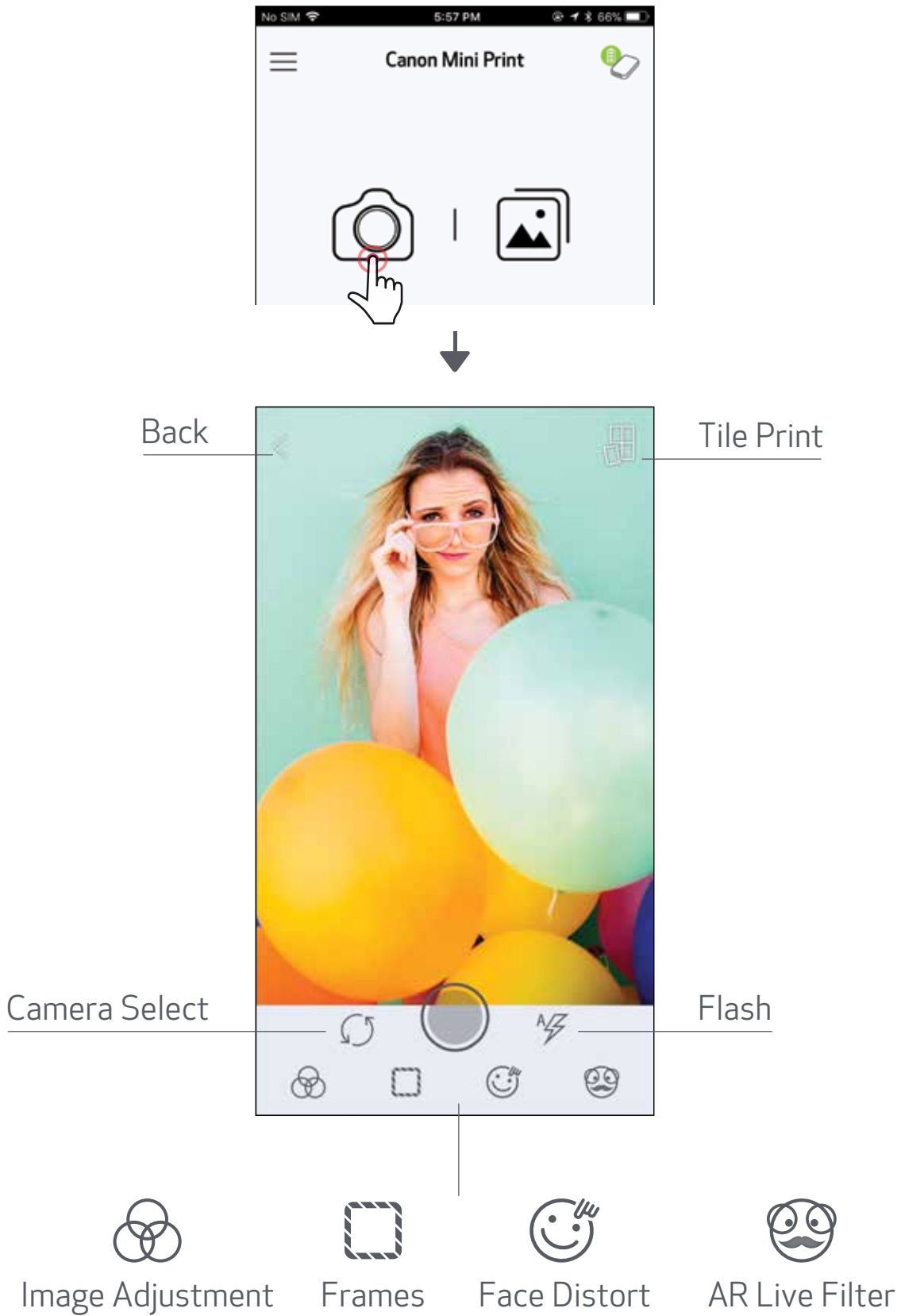


1) Internet Connection Required. Requires active social media or Cloud account(s) to use.





# CAMERA MODE

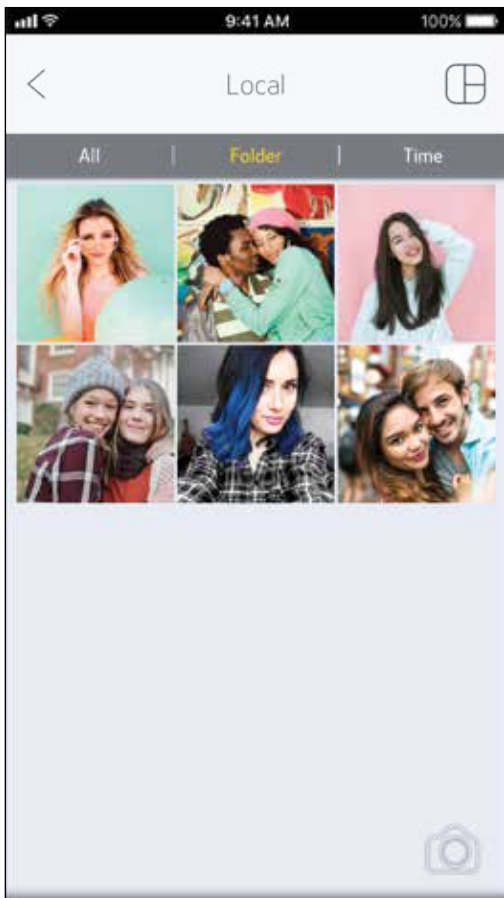
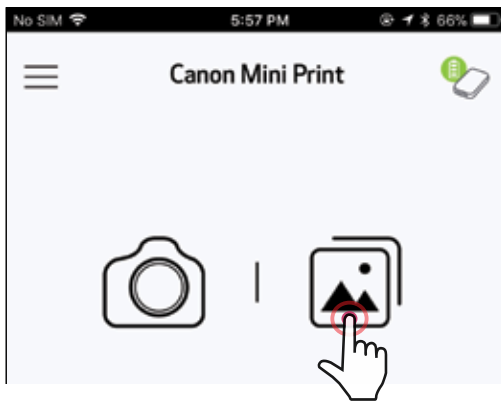
- ① On the Home Screen, tap [  ] to take a photo. (Optional, tap on the icons at the bottom to take a photo with effects.)
- ② Once you've taken a photo, you can Print, Edit, Share, or Save.
- ③ To print, tap [  ].



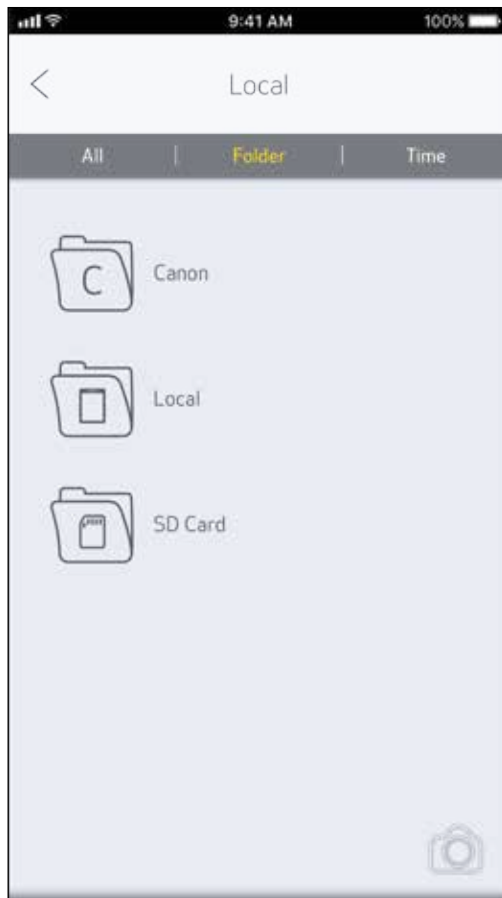
# PHOTO GALLERY

In the Photo Gallery you can browse photos in gallery view, by folders, or by calendar.

- ① On the Home Screen, tap [  ] to view the Photo Gallery.
- ② Once you've selected a photo, you can Print, Edit, Share, or Save.
- ③ To print, tap [  ].



All Photos - Gallery



Folder View




Calendar View

## ! NOTE

- The printed image may differ from the original image due to the "screen technology" used to display color on mobile device is difference from the "print technology" used to print color on paper. (Thermal transfer printing).
- Do not pull the paper out by force during printing or paper jam.
- Do not open the top cover during printing. It may affect printing quality.
- If the printer is vibrated or shaken, photo print quality may be affected.

# SHARE PHOTOS

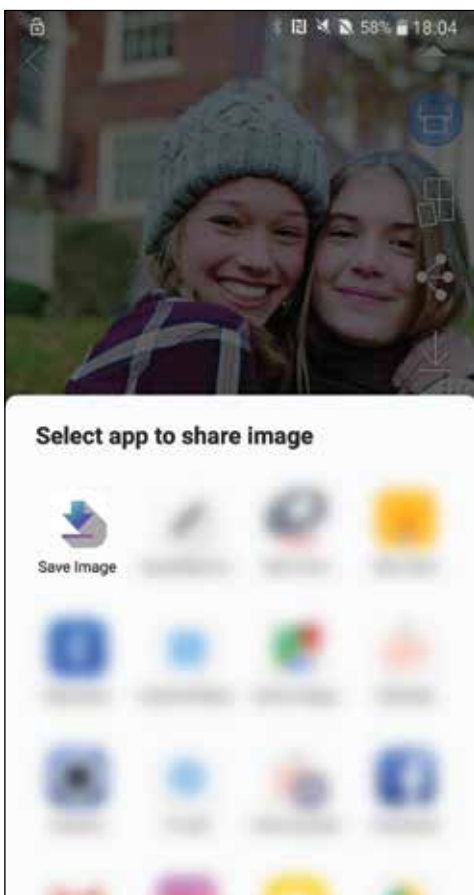
You can easily share or save your images and edits.

- ① When you're ready, tap [  ] to open the options on your device
- ② Share with a listed app, or save to your device's photo storage.




Android

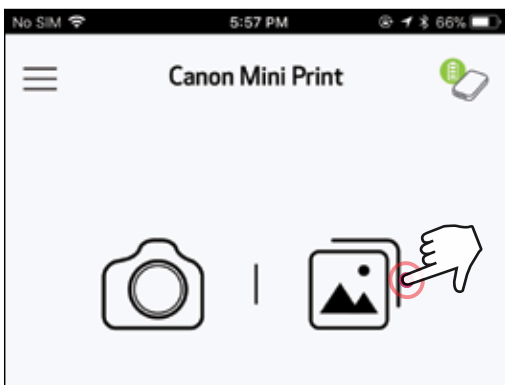
iOS




# SAVE/DELETE PHOTOS



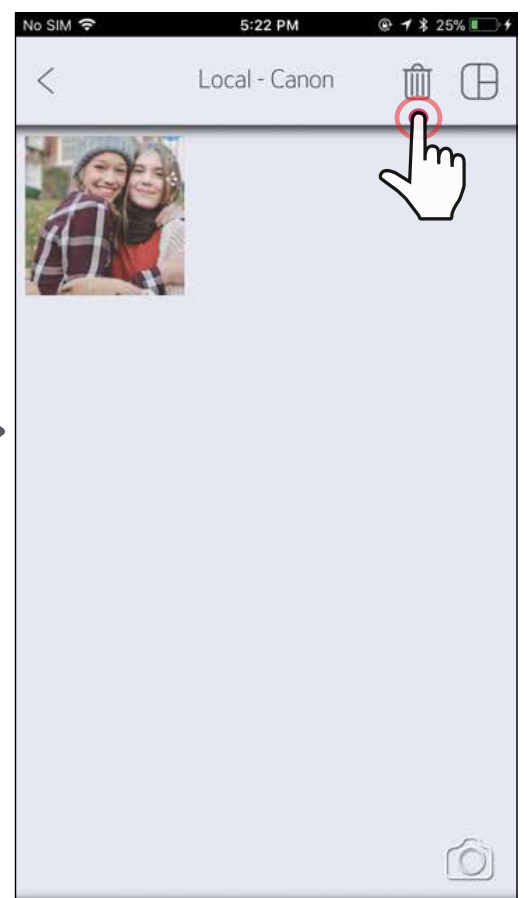
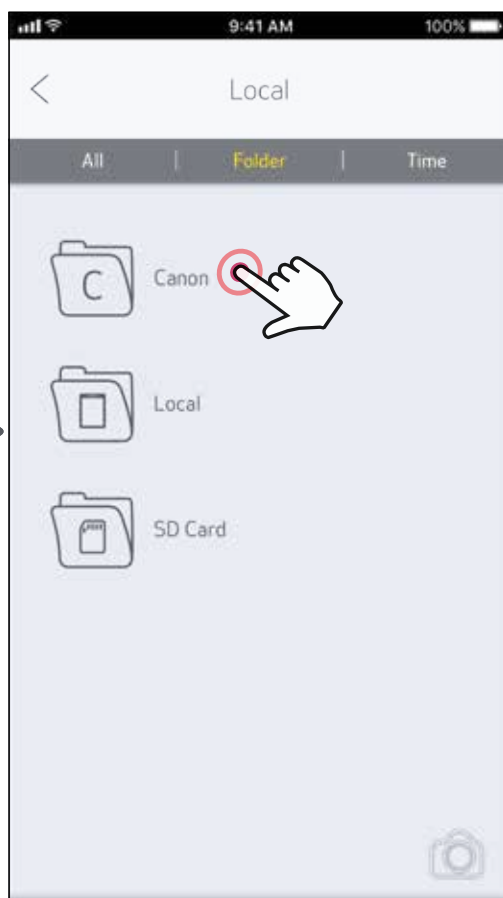
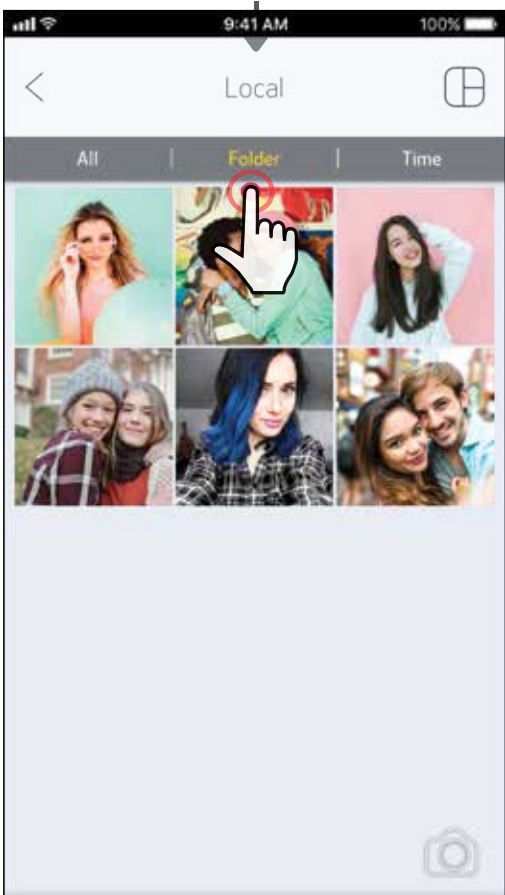
You can delete photos in the app that have been saved to the Canon folder using the [  ] button.



① To delete a photo tap [  ] to view the Photo Gallery

② Tap "Folder", then "Local - Canon"

③ Tap the trashcan, then select the photo(s) you wish to delete permanently.

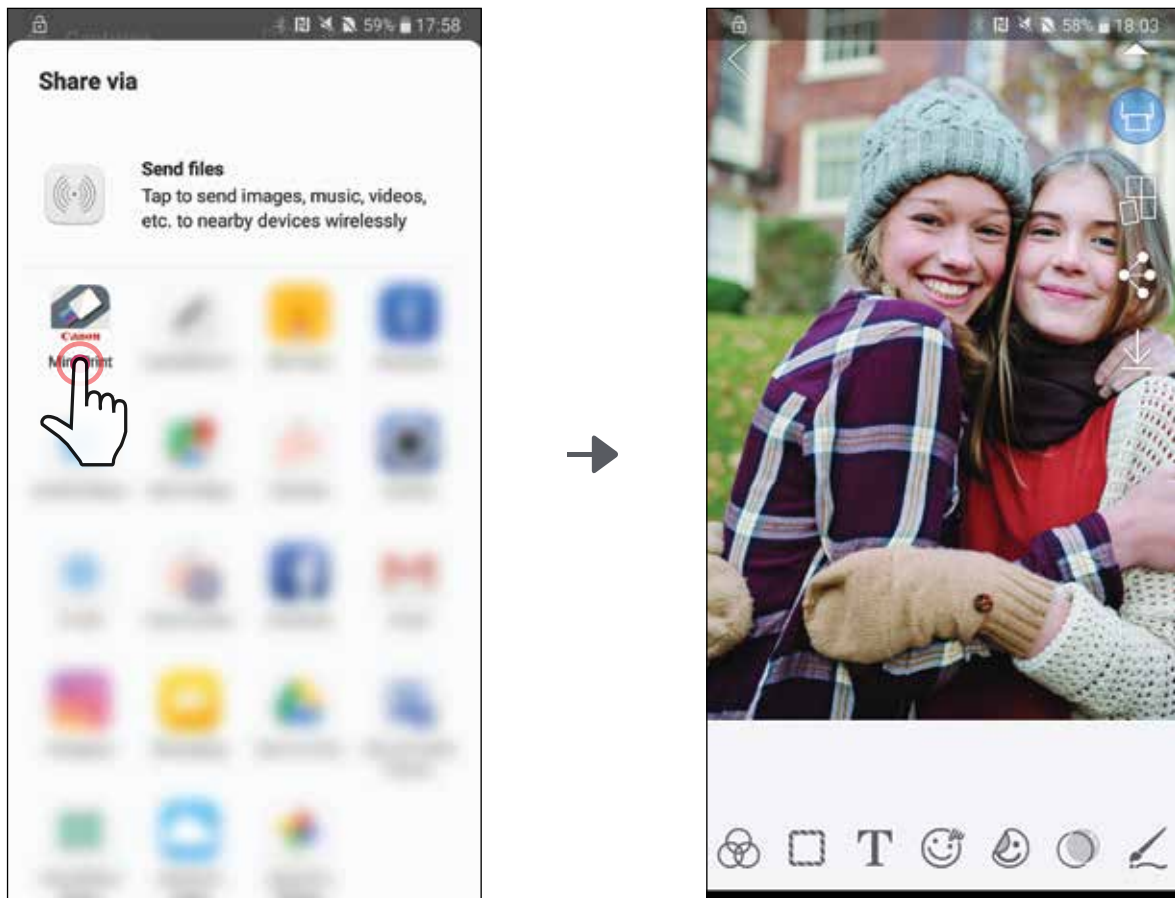


# SEND TO MINI PRINT

Send a photo in your device's photo gallery or camera roll to the Canon Mini Print app.

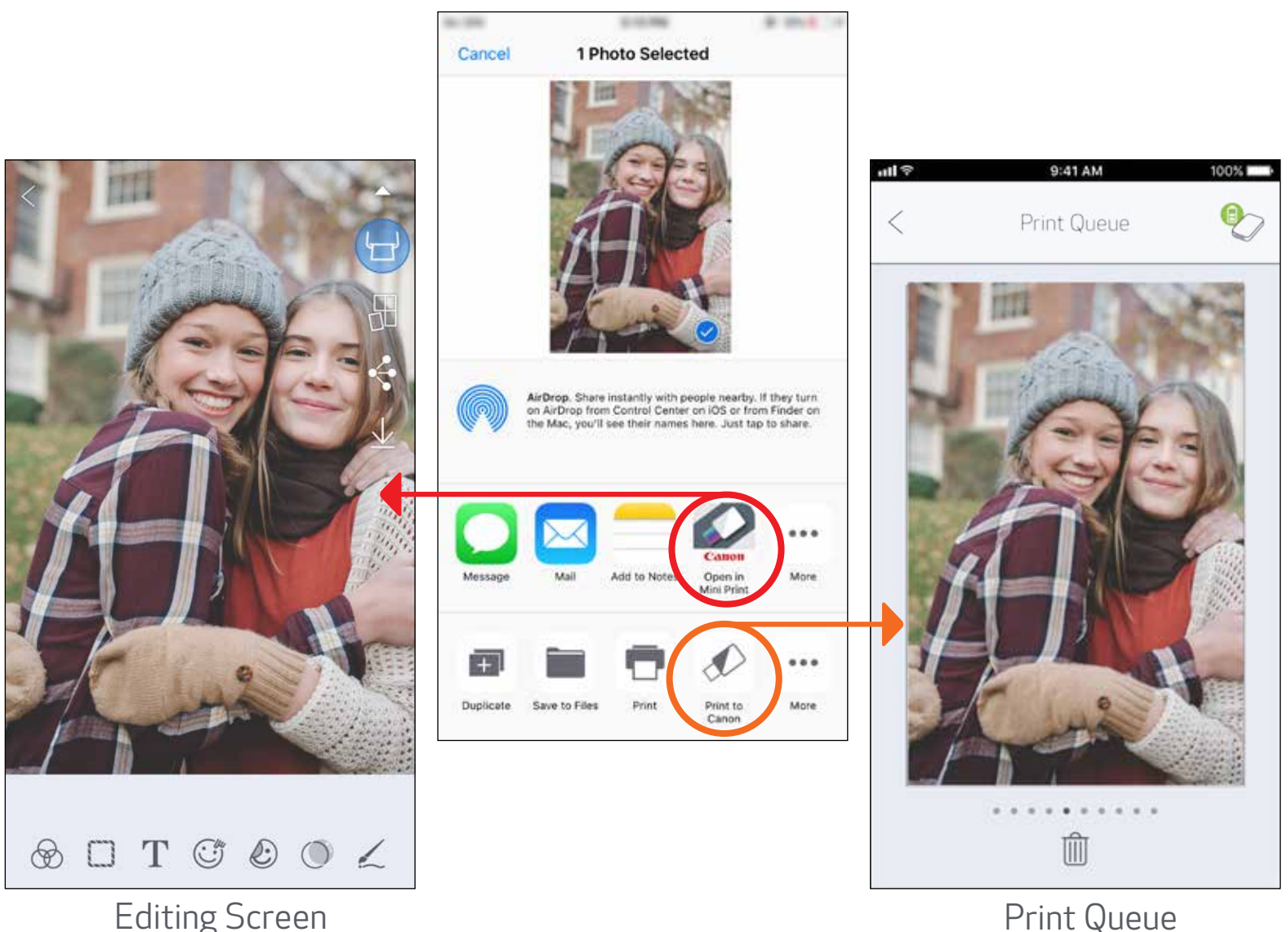
## For Android

- ① Find a photo in your device Gallery and tap the share button
- ② Tap the Mini Print Icon to send the photo to the app so you can edit and print.



## For iOS

- ① Find a photo in your device Gallery and tap the share button
- ② **OPTION A** - Tap "Open in Mini Print" to send the photo to the app editing screen where you can edit and print.
- ② **OPTION B** - Tap the "Print to Canon" to send the photo directly to the print queue.



# SPECIFICATIONS

Power Source	Internal rechargeable battery 500 mAh Li-Polymer 7.4 V	
Charging Speed	Approximately 90 minutes (Full Charge)	
Dimension	4.7"(L) x 3.2" (W) x 0.7" (H) / 118.3 mm (L) x 82.4 mm (W) x 18.7 mm (H)	
Weight	5.4 oz (160 g)	
Connectivity	Bluetooth 4.0	
Compatible OS	iOS 9.0 or above & Android 4.4 or above	
Print Technology	ZINK™	
Print Resolution	314 x 400 dpi (dots per inch)	
Borderless Printing	Yes	
Compatible Paper	Canon ZINK™ Photo Paper: ZP-2030-20 (20 sheets) ZP-2030-50 (50 sheets) 2" x 3" / Peel-and-stick back / Smudge-free / Water & tear resistant	
Paper Capacity	Up to 10 sheets of ZINK™ photo paper + 1 SMART SHEET™	
Memory	512Mb	
Environmental Parameters	<ul style="list-style-type: none"><li>• <b>Recommended Printer Operating, Charging, and Storage Temperature:</b> 59° to 90° F (15° to 32° C)</li><li>• <b>Recommended Printer Operating, Charging, and Storage Humidity:</b> 40-55% RH</li><li>• Operating Temperature: 41° to 104°F (5° to 40°C)</li><li>• Operating Humidity: &lt;70% RH</li></ul>	
Automatic Power-off	None / 3 minutes / 5 minutes / 10 minutes (selectable in-app)	
Power Adapter	Output current: 1A (min)	Voltage: 5V

\* Subject to change without notice

## BATTERY RECYCLE



The lithium ion/polymer battery is recyclable.

Please call 1-800-8-BATTERY for information on how to recycle this battery.