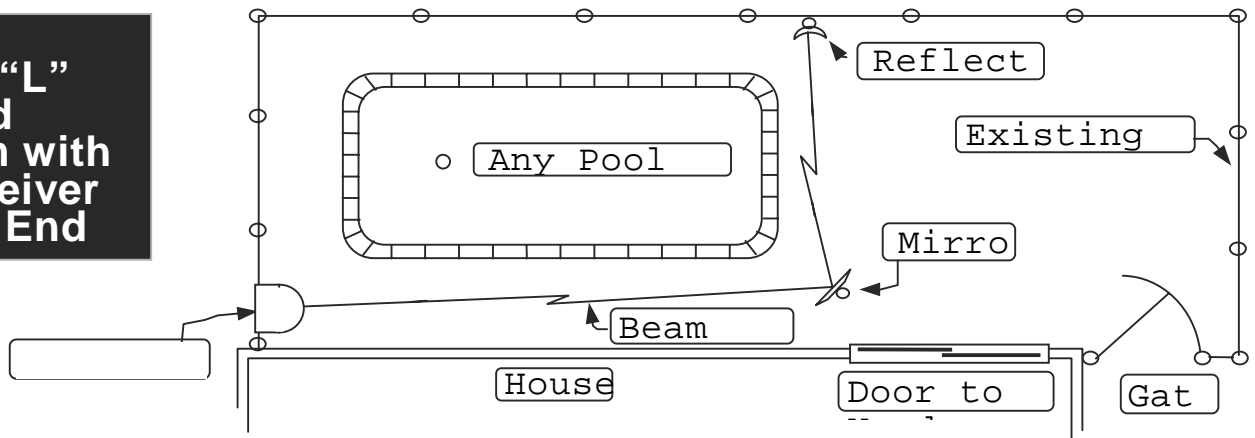
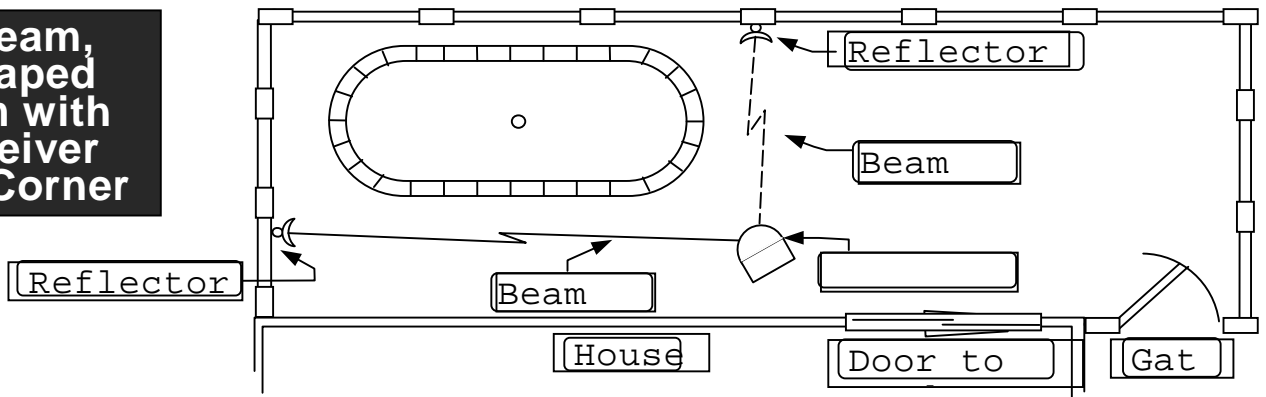


TYPICAL

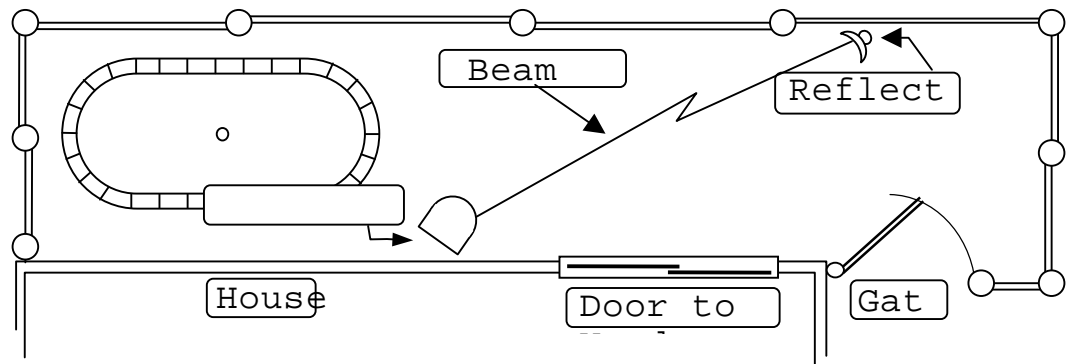
Single Beam, "L" Shaped System with Transceiver at One End



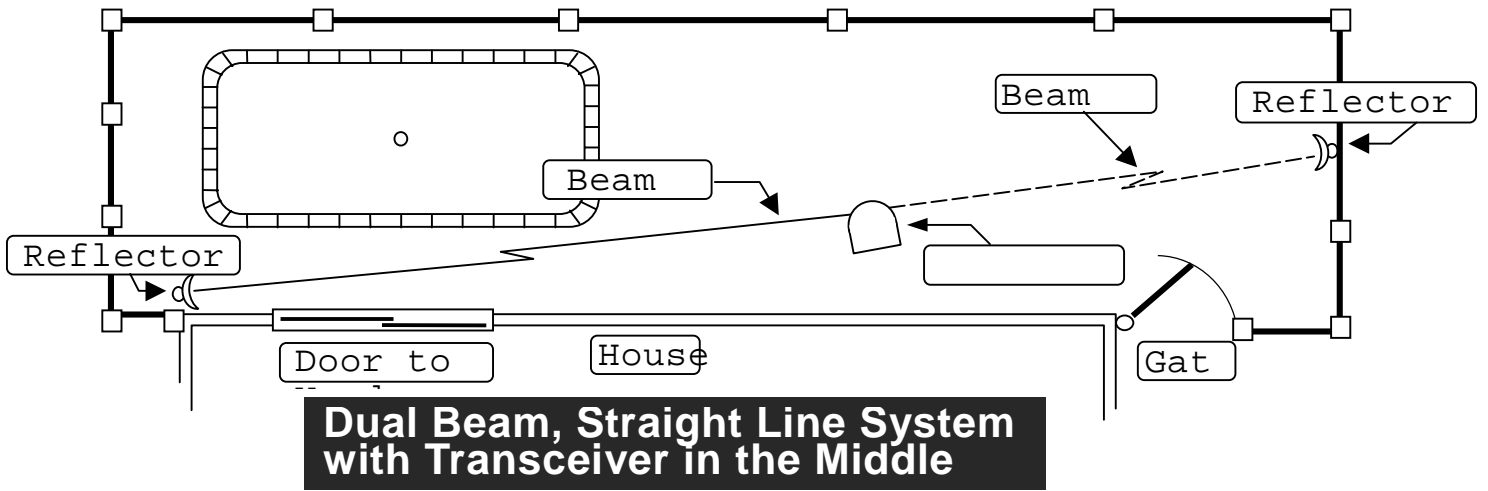
Dual Beam, "L" Shaped System with Transceiver at the Corner



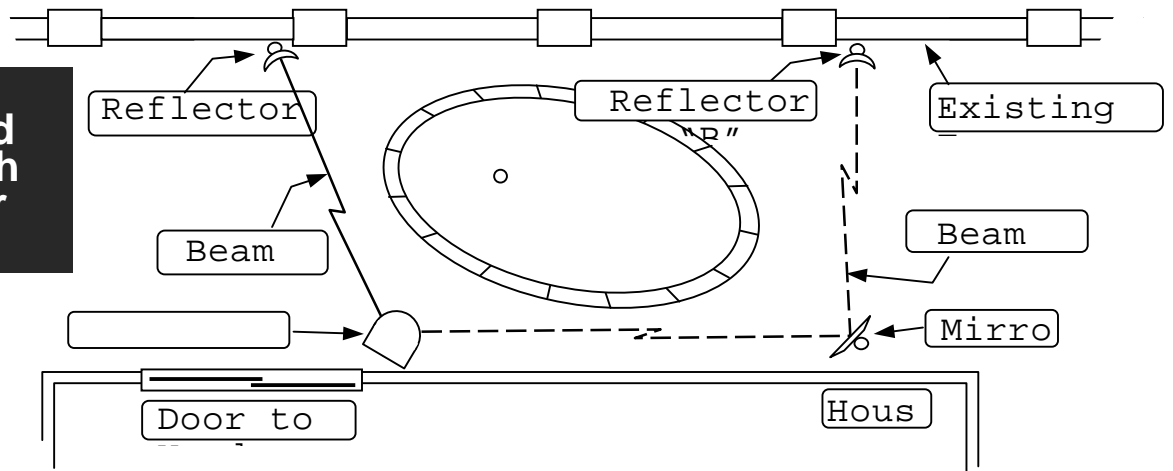
Single Beam, Straight Line System with Transceiver at One End



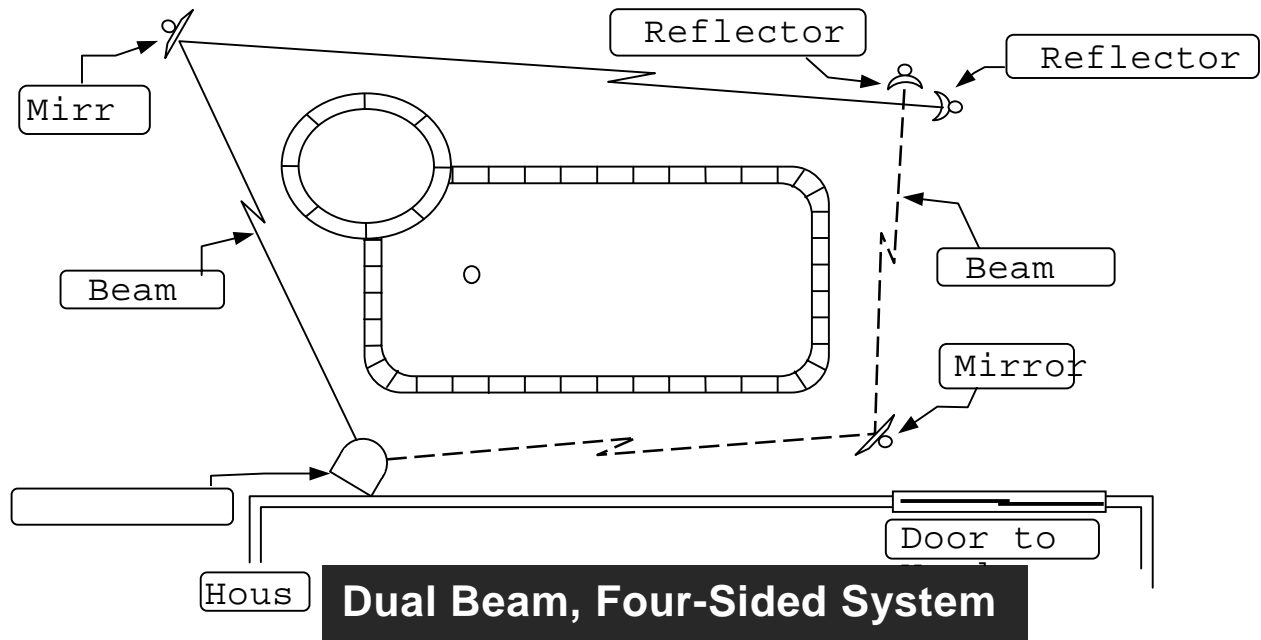
INSTALLATIONS



Dual Beam, Three Sided System with Transceiver at a Corner

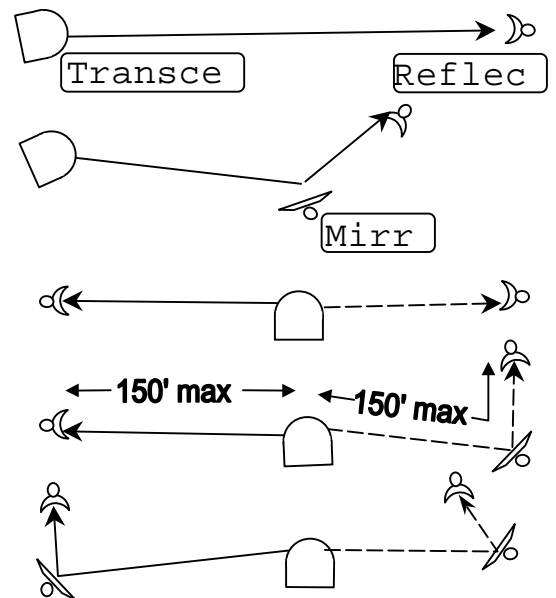


INSTALLATIONS



Important Points:

- The beam path of every system must start at the **Transceiver** and end at a **Reflector**.
- A **Mirror** is used to change direction of a beam path, such as going around a corner. A **Mirror** can be installed in a beam path only between the **Transceiver** and a **Reflector**.
- The maximum length of a beam path from the **Transceiver** to each **Reflector** is 150 feet (45 meters). When **Mirrors** are included in the path, this measurement must be made along the actual beam path, from **Transceiver** to **Mirror** to **Reflector**.

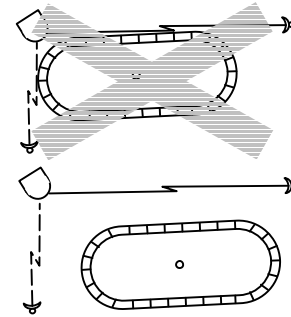


INSTALLATION

BEAM PATHS AWAY FROM THE POOL EDGE ARE BEST

By Installing the Prevent system with the beam paths as far away from the pool edge as possible, the alarm will sound when the intruder is farther away from the pool.

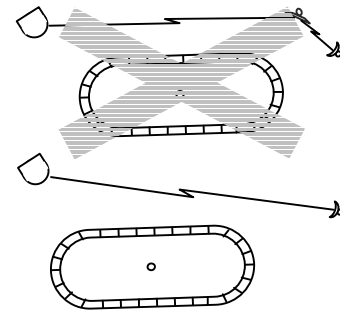
In the case of a very small child, this could mean that an adult, upon hearing the alarm, could get to the child *before* the child ever reached the water.



USE AS FEW MIRRORS AS POSSIBLE

As specified on the preceding page, the maximum beam path for each beam is 150 feet (45 meters) measured from the Transceiver to a Mirror, or Mirrors, then to the Reflector. More than one Mirror *may* be used in a beam path, providing that the total path for that beam does not exceed 150 feet.

However, great care must be taken during the Mirror/Reflector alignment stage of the installation to assure that the beam is centered on each Mirror and Reflector in the path. When multiple Mirrors are installed in one beam path, the slightest misalignment, or movement during use is magnified significantly. This can lead to nuisance false alarms.



CONSIDER THE *THINGS* THAT MIGHT GET IN THE WAY...

Two types of things can intrude into the beam path, causing an alarm – things placed there by *people*, and things moved there by *nature*.

Try to visualize the beam paths selected for the installation – will the plants grow into the path? Will breezes blow the flowers into the path? Sprinkler systems normally pose no problems for Prevent; however, an excessive heavy stream of water could.

Ideally, the Prevent system should be “out of the way,” providing a valuable service rather than becoming a nuisance. Careful planning of the relationship between the beam path and everyday life around the pool will assure years of beneficial, trouble-free service.



CONSIDER THE *CRITTERS* THAT MIGHT WANDER BY

Keep in mind the fact that the Prevent system does not discriminate. Anything – man, beast or any moving inanimate object breaking the laser beam will cause the alarm to sound.

Most people prefer to protect their pets, but should the alarm become annoying, check with your dealer or directly with the factory Customer Service on the availability of the optional Pet Safety Alarm. This add-on device emits a high-pitched sound that only animals can hear.

Household pets may learn quickly, and avoid the area altogether. The reaction by the large variety of wild animals that might come prowling is unknown.

