

REMOTE CONTROLLER FUNCTIONS

The usefulness of the Prevent system is enhanced by the versatility of the Remote Controller. The pool and the surrounding area are always available for supervised use.

The four modes described below allow a high degree of flexibility – while providing maximum protection – without sacrificing the pleasure and enjoyment of owning a swimming pool.

Try each of the modes. Watch and listen for the indications listed on the right side of each box.

Reminder: Each click must occur within one second of the preceding click in order to register. Also, there is a one second delay following the last click before the desired action takes place.

WALK THROUGH MODE

Allows the user to break the laser beam and enter the pool area without sounding the alarm. Another single Click allows the user to leave the pool area.



- Lasers shut OFF
- Green indicator light on
- Transceiver FLASHES
- Alarm CHIRPS every 3

SWIM MODE

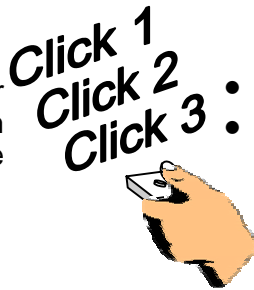
Allows the user to break the laser beam and enter and leave the pool area for a 30 minute period without sounding the alarm.



- Lasers shut OFF
- Green indicator light on
- Transceiver FLASHES
- Alarm CHIRPS every 30 seconds
- System RESETS in 30

FALSE ALARM CANCEL MODE

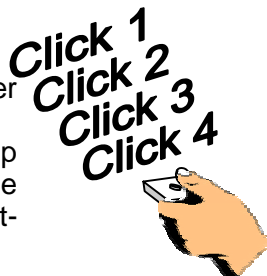
Allows the user to silence the alarm after clearing the obstruction from the beam path. The alarm *cannot* be silenced if the obstruction remains in the beam path.



- CANCELS a false alarm
- Immediately returns the system to FUNCTIONAL Mode

SET-UP MODE

This maintenance mode allows the user to align the Mirrors and Reflectors. Alarm will not sound when in the Set-up Mode. A single Click will reset the system when adjustments are completed.

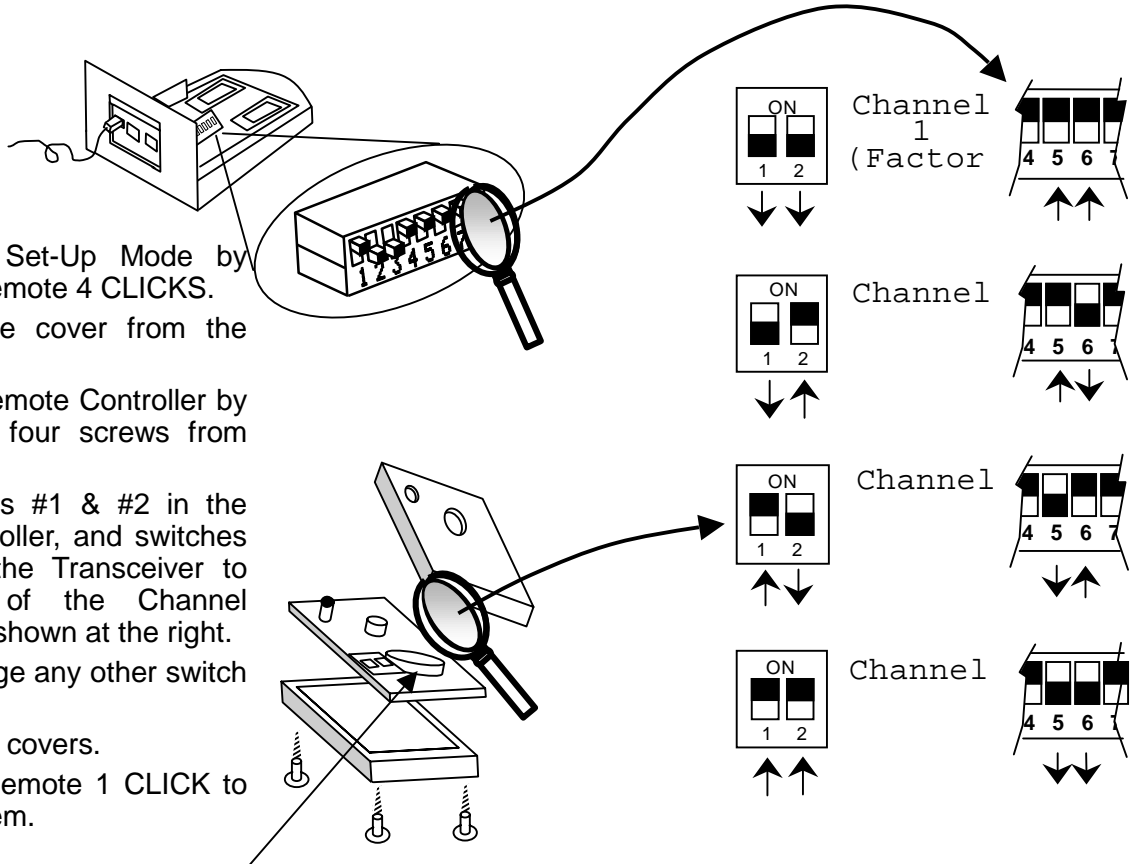


- Lasers are ON
- Alarm is SILENCED
- Green indicator light on
- Transceiver FLASHES
- Alarm CHIRPS every 2

CHANGING THE REMOTE CONTROLLER CHANNEL, AND REPLACING THE BATTERY

The Remote Controller provided with the Prevent system is capable of operating on four different channels. The factory setting is Channel 1. Occasionally, due to interference from other nearby radio frequency devices, it is necessary to change to a different channel. Proceed as shown below.

- Enter the Set-Up Mode by clicking the Remote 4 CLICKS.
- Remove the cover from the Transceiver.
- Open the Remote Controller by removing the four screws from the bottom.
- Set switches #1 & #2 in the Remote Controller, and switches #5 & #6 in the Transceiver to match one of the Channel combinations shown at the right.
- Do not change any other switch settings.
- Replace the covers.
- Click the Remote 1 CLICK to reset the system.



Battery: 3 Volt,
Lithium

The life of the battery in the Remote Controller will vary with the amount of use of the unit. It is recommended that the battery be replaced once each year.

INDICATOR LIGHTS

Transceiver:

- Green Solid Light = Functional and Active
- Green Blinking = In Set-up or Swim Mode
- Red Light Off = Batteries are charged and functional
- Red Light Blinking = Batteries are low, check batteries.

Refer to Page 14 for battery replacement instructions

Remote Controller:

- Red Light Blinks when button pushed = Normal function
- No Red Light when button pushed = Batteries need to be replaced

Jeff Additions:

Trouble Shooting Guide?

Replacement Parts List



PREVENT *Limited Warranty*

The Prevent Area protection system is warranted against defects in material and workmanship, excluding batteries, for a period of one year from the date of purchase.

The Prevent system which fails or become defective during the warranty period, except as a result of improper installation and/or maintenance, improper operation, improper environment, improper re-packaging or damage incurred in shipping, fire, wreckage, freezing, willful abuse, shall be repaired or replaced at our option without charge within ten (10) days of the receipt of defective product, barring unforeseen delays. This warranty does not extend to consequential damages or other circumstances including normal discoloration. CSI does not cover labor and shipping charges which may be necessary to replace the product covered by this warranty. This warranty extends to the consumer who made the original retail purchase only, and is not enforceable by any other party.

To obtain warranty replacements or repair, the defective portion of the system should be returned, transportation paid, to:

CSI
15440 North 77th Street
Scottsdale, Arizona 85260

Should you have specific questions regarding the warranty or return contact us toll free at 1-800-762-0647. CSI shall not be responsible for cartage, removal and/ or reinstallation labor, or any other such costs incurred in obtaining warranty replacements.

Some states do not allow a limitation on how long an implied warranty lasts, or the exclusion or limitation of incidental or consequential damages, so the above limitation or exclusion may not apply to you .

This warranty gives you specific legal rights, and you may also have other rights which vary from state to state.

CSI...(logo)
15540 North 77th Street Scottsdale, Arizona 85260
1-800-762-0647 Fax (602) 951-4319