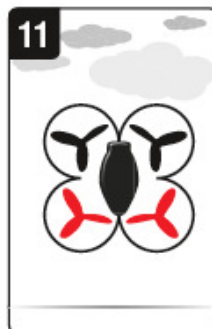
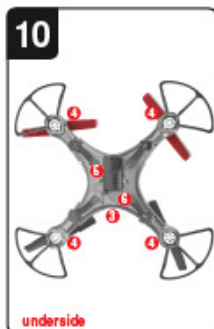
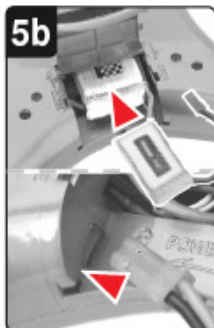
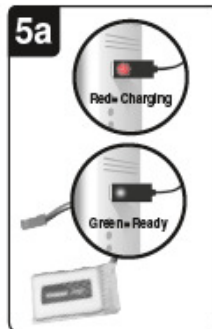
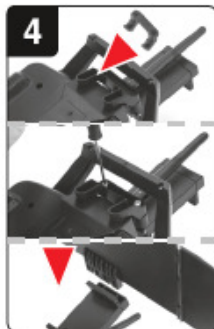
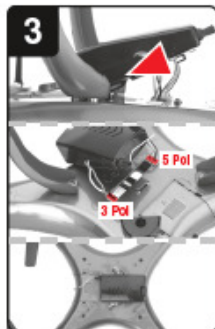
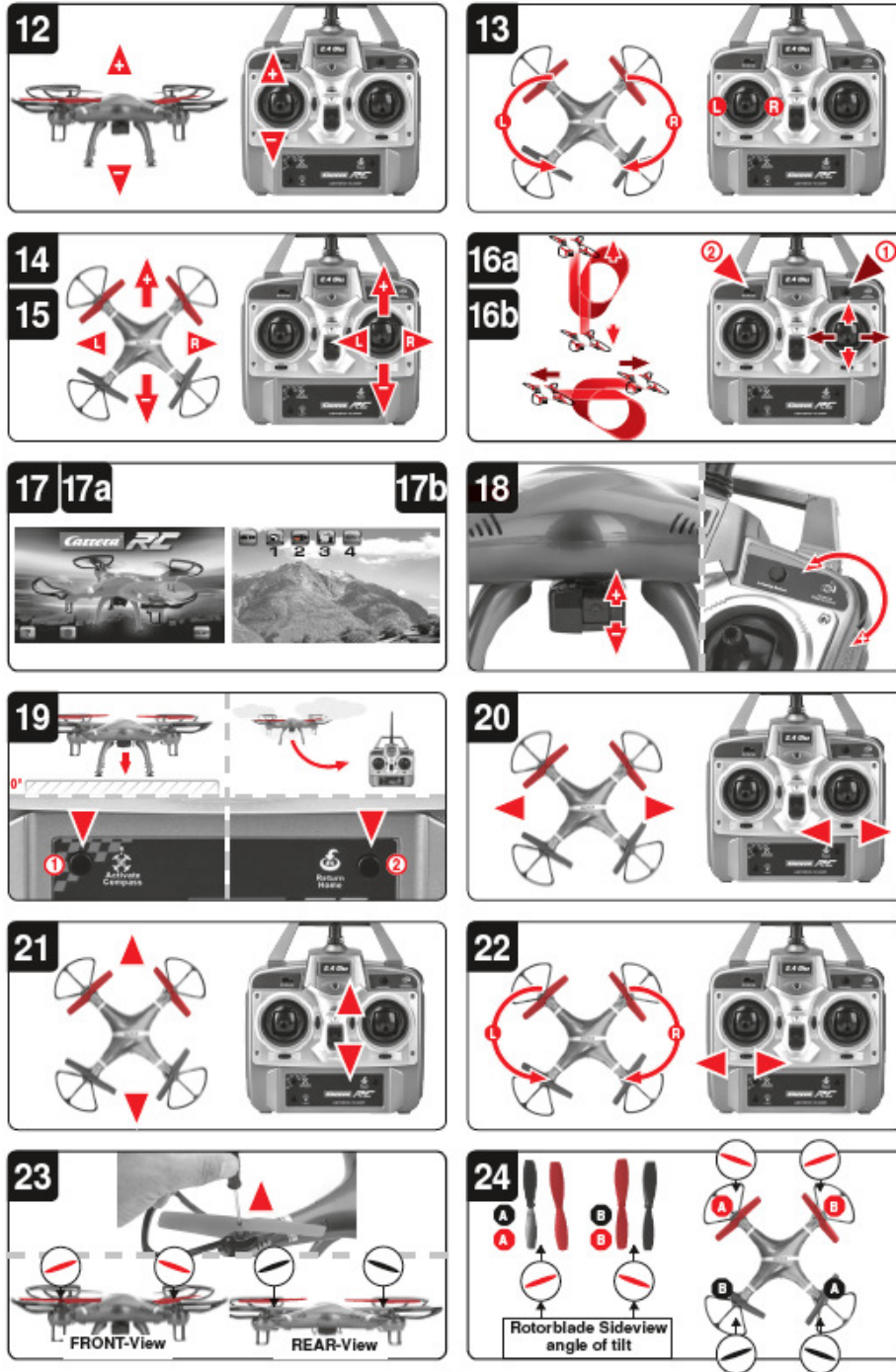


1.6 User Manual









Problemlösungen

Problem: Controller funktioniert nicht.
Ursache: Der ON/OFF-Powerschalter steht auf „OFF“.
Lösung: Den ON/OFF-Powerschalter auf „ON“ stellen.
Ursache: Die Batterien wurden falsch eingelegt.
Lösung: Überprüfen Sie, ob die Batterien korrekt eingelegt sind.
Ursache: Die Batterien haben nicht mehr genug Energie.
Lösung: Neue Batterien einlegen

Problem: Der Quadcopter lässt sich mit dem Controller nicht steuern.
Ursache: Der Powerschalter des Controller steht auf „OFF“.
Lösung: Zuerst den Powerschalter am Controller auf „ON“ stellen.
Ursache: Der Controller ist ggf. nicht richtig mit dem Empfänger im Quadcopter verbunden.
Lösung: Bitte führen Sie den Eindevorgang wie unter „Checkliste für die Flugvorbereitung“ beschrieben durch.

Problem: Der Quadcopter steigt nicht auf.
Ursache: Die Rotorblätter bewegen sich zu langsam.
Lösung: Den Gashebel nach oben ziehen.
Ursache: Die Akku-Leistung reicht nicht aus.
Lösung: Den Akku aufladen (siehe Kapitel „Aufladen des Akkus“).

Problem: Der Quadcopter verliert ohne ersichtlichen Grund während des Fluges an Geschwindigkeit und sinkt ab.
Ursache: Der Akku ist zu schwach.
Lösung: Den Akku aufladen (siehe Kap. „Aufladen des Akkus“).

Problem: Der Quadcopter dreht sich nur noch im Kreis oder überschlägt sich beim Start.
Ursache: Falsch angeordnete oder beschädigte Rotorblätter.
Lösung: Rotorblätter wie in **23** **24** beschrieben anbringen/austauschen.

Problem: Keine Wi-Fi-WLAN Verbindung möglich.
Ursache: Der Powerschalter des Modell steht auf „OFF“ oder der Akku ist leer.
Lösung: Zuerst den Powerschalter am Modell auf „ON“ stellen bzw. einen neuen Akku einlegen.

Intern und Änderungen vorbehalten
 Farbe = verbindliches Design - Änderungen vorbehalten
 Technische und designbedingte Änderungen vorbehalten
 Programm - Symbolik

Dear customer

Congratulations! You bought a Carrera RC Quadcopter which has been manufactured according to today's state-of-the-art technology. As it is our constant endeavour to develop and improve our products, we reserve the right to make modifications, either of a technical nature or with respect to features, materials and design, at any time, and without prior notice. For this reason, no claims will be accepted for any slight deviations in your product from the data and illustrations contained in these instructions. These operating and assembly instructions are an integral part of the product. Non-observance of these operating instructions and the safety instructions they contain will render the guarantee null and void. These instructions are to be kept for future reference and in the event that the product is passed on to a third party.

For the latest version of these operating instructions and information on replacement and spare parts available, please visit carrera-rc.com in the service area.

WARNING! Before you first fly the model, find out whether there is a legal requirement to insure model aeroplanes such as this in your country. We recommend you take out insurance to cover this model!

Guarantee conditions

Carrera products are technically advanced products (NO TOYS) which should be handled with care. It is important to follow the directions given in the operating instructions. All components have been subjected to careful inspection (technical modifications and alterations to the model for the purpose of product improvement are reserved).

Should any faults nevertheless occur, guarantee is assumed within the scope of the following conditions: In accordance with the following provisions, Stadbauer Marketing + Vertrieb GmbH (hereinafter referred to as "manufacturer") warrants to the end consumer (hereinafter referred to as "customer") that the Carrera RC-model-Quadcopter (hereinafter referred to as "product") delivered to the customer shall be free from defects in material or workmanship for two years from the date of purchase (guarantee period). Such defects will, at the manufacturer's option, either be repaired by the manufacturer or fixed by delivering new or refurbished parts free of charge. The warranty does not cover failure due to normal wear and tear, (e.g. to batteries, rotor blades, cabin covering, gear wheels etc.), or damage as a result of improper handling/misuse or unauthorised interference. Any other customer's claims asserted against the manufacturer, especially action for damages, shall be excluded.

The contractual and statutory rights of the customer against the seller (supplementary performance, rescission of the contract, abatement, compensation) which exist with the product not having been free from defects at the time of the passing of risk, shall remain unaffected by this warranty.

Claims from this special warranty shall only be valid if:

- the defect reported has not arisen by damage caused by unintended use or misuse as specified in the instruction manual.
 - the failure of the product is not due to normal wear and tear
 - the product does not show any signs resulting from repairs or other interferences carried out by workshops not having been authorised by the manufacturer.
 - the product has only been operated with accessories authorised by the manufacturer and
 - the product is sent in together with the original proof of purchase (invoice / receipt) and the completely filled-in warranty card which has not been altered in any way.
- Guarantee cards cannot be replaced.

Note for EU countries: Reference is hereby made to the seller's statutory guarantee obligation, to the extent that this guarantee obligation is not restricted by the product guarantee.

The manufacturer shall bear the costs for sending in and returning the product.

This warranty shall be valid to the extent aforementioned and under the above-named circumstances (including the submission of the original proof of purchase also in case of resale) for any future owner of the product.

Declaration of conformity

Stadbauer Marketing + Vertrieb GmbH hereby declares that this model including the controller conforms with the fundamental requirements of the following EC directives: EC Directives 2004/108 and 2004/108/EC regarding electromagnetic compatibility and the other relevant regulations of Directive 1998/5/EC (R&TTE).

The original declaration of conformity can be requested from carrera-rc.com.



Warning!

A remote-controlled Quadcopter is NOT A TOY and is only suitable for teenagers over the age of 14!

This product is not intended for use by children without supervision of a parent. Flying the helicopter requires skill and children must be trained under the direct supervision of an adult. Read the User's information together with your child before the first use. Inappropriate use may result in severe injuries and/or damage to property. It has to be operated with care and caution and requires both mechanical and mental skills. The operating instructions contain notes on safety and technical equalisations as well as information on maintaining and operating the product. It is indispensable to read these instructions thoroughly before the first usage. Only this helps to avoid accidents with injuries and damage.

Hands, hair and loose clothing, including other objects such as pens and screwdrivers must be kept away from the propeller (rotor). Do not touch the rotating rotor. Especially take care that your hands DO NOT get close to the rotor blades!

WARNING: Risk of eye injuries. Do not fly near your face to avoid injuries. For use only outdoors - not to be used indoors. Risk of eye injuries. Start and fly only when the area is appropriate for the intended use (free area, no obstacles) and only within direct visual contact. Only operate under good visibility and calm weather conditions.

As user of this product you are solely responsible for handling it safely in order to ensure that neither you nor other persons or their property suffer damages or are endangered.

- Never use your model with weak remote control batteries.
- Avoid busy areas. Always make sure that there is enough space.
- Preferably do not use your model on an open street or in public areas in order not to endanger or hurt anyone.
- **WARNING: Do not start up and fly when persons, animals or any obstructions are within the flying range of the Quadcopter.**
- Taking off and flying in the vicinity of overhead wires and pylons, railway lines, roads, swimming pools and other stretches of open water is strictly prohibited.
- Exactly observe the instructions and warnings for this product and for any possible additional equipment (battery change / rechargeable batteries etc.) being used by you.
- **Should the Quadcopter come into contact with any flying flying or solid object, immediately return the gas control to zero, in other words the left-hand joystick must be at the stop at the bottom of the stick!**
- Avoid any moisture as this might do damage to the electronics.
- There is a risk to suffer severe injury or even death if you put parts of your model into your mouth or lick them.
- **WARNING: there is danger of strangulation if you hang the lanyard around your neck!**

DEUTSCH

ENGLISH

• Do not change or modify anything on the Quadcopter. If you do not agree to these terms please immediately return the complete Quadcopter model in new and unused condition to the retailer.

Important information concerning Lithium Polymer rechargeable batteries

Lithium-Polymer (LiPo) rechargeable batteries are significantly more sensitive than traditional alkali- or NiMH-rechargeable batteries normally used with radio control units. Therefore the instructions and warnings have to be observed in detail. In case of improper use of LiPo rechargeable batteries there is a danger of fire. Always follow the manufacturers' instructions if you dispose of LiPo rechargeable batteries.

Regulations on disposal for waste electrical and electronic equipment (WEEE)



This symbol, showing refuse bins with a cross through them, denotes that used batteries, rechargeable batteries, button cells, rechargeable battery packs, equipment batteries, disused electrical equipment, etc. should not be disposed of in domestic refuse, as they are harmful to the environment and health. Please help to preserve environment and health and talk to your children about the correct disposal of used batteries and disused electrical equipment. Batteries and disused electrical equipment should be handed in to the usual collection points where they can be properly recycled.

Do not mix dissimilar battery types or employ new and used batteries together. Empty batteries should be removed from the product. Do not recharge non-rechargeable batteries due to risk of explosion.

WARNING!

Rechargeable batteries should only be charged under adult supervision.

Never leave the battery unattended while it is charging Exhausted batteries are to be removed from the toy. Rechargeable batteries should be removed from the product before charging. Supply terminal are not to be short-circuited. Only use the batteries recommended or equivalent types.

If in regular use the charger must be examined for damage to the cord, plug, covers and all other parts. If any signs of damage are found the charger may only be used again after repair work has been completed. The external flexible cable or cord of this charger cannot be replaced: If the cord is damaged the charger shall be scrapped.

FCC statement

This device complies with Part 15 of the FCC Rules.

Operation is subject to the following two conditions:

- (1) this device may not cause harmful interference, and
 - (2) this device must accept any interference received, including interference that may cause undesired operation.
- Changes or modifications not expressly approved by the party responsible for compliance could void the user's authority to operate the equipment.

Guidelines and warnings for the use of LiPo rechargeable batteries

• You have to charge the attached 3.7 V ~ 1000 mAh / 3.7 Wh LiPo rechargeable battery in a safe place and at a safe distance to flammable material.

• Never leave the battery unattended while it is charging

• After a flight, the rechargeable battery has to cool down to the ambient air temperature before charging it.

• You must always use the corresponding LiPo charging unit (USB cable / remote control). In case of non-compliance with these directions there is a danger of fire resulting in a health risk and/or damage to property. NEVER use any other battery charger.

• Should the rechargeable battery swell or deform while discharging or recharging, you have to immediately stop charging or discharging the battery. Take the battery out as quickly and carefully as possible and place it in a safe and open area outside any inflammable material and watch it for at least 15 minutes. In case you continue charging or discharging a battery which has already started to swell or deform there is a danger of fire! Even in case of slight deforming or ballooning the rechargeable battery has to be taken out of operation.

• Store the rechargeable battery at ambient temperature in a dry place.

• **Always recharge the battery immediately after use to prevent its becoming deep discharged. Please make sure to allow a pause of about 20 minutes between finishing the flight and recharging the battery. Recharge the battery occasionally (suggested every 2-3 months). Failure to treat the battery as described above can lead to its becoming defective.**

• When transporting or temporarily storing the rechargeable battery the temperature should be between 5-50°C. If possible, do not store the battery or the model in a car and do not expose it to direct sunlight. In case the battery is broiled it can be damaged or catch fire.

Note: If the battery voltage/output is low you will recognise that a considerable trim and/or controlling is necessary to avoid that the Quadcopter starts trundling. This usually occurs before reaching a battery voltage of 3 V and it is a good moment to end the flight.

Contents of package

- 1 1x Quadcopter
- 1x Controller
- 1x USB charging cable
- 1x 3.7 V, 1000mAh Rechargeable Battery
- 1x Lanyard
- 1x Camera
- 1x Landing feet including screws
- 1x Smartphone holder including screws
- 1x Set of replacement parts
- 1x Screwdriver
- 6x 1.5 V Mignon AA batteries (non-rechargeable)

Fixing of the landing feet, the camera and the smartphone holder

- 2 Using the screwdriver, fix the four landing feet on the underside of the Quadcopter, as shown in the illustration.
- 3 Place the camera in its central mounting underneath the Quadcopter. Plug the three-wire plug in the left-hand and the five-wire plug in the right-hand socket next to the mounting.
- 4 Using the screwdriver, fix the smartphone holder in the middle on the aerial on the controller.

Recharging the LiPo rechargeable battery

Make sure you only charge the LiPo rechargeable battery supplied with the LiPo charging unit also supplied (USB cable and remote control). If you try to charge the rechargeable battery with a different LiPo battery charger or any other battery charger, this might cause serious damage. Please carefully read the previous chapter with warnings and guidelines on the usage of rechargeable batteries before proceeding. Supply terminals are not to be short-circuited.

You can charge the rechargeable battery fitted in the Quadcopter with its USB charging cable from a USB port on a computer:

5a Charging via computer:

• **Rechargeable batteries are to be removed from the model before being charged.**

- Connect the USB charging cable with the USB port of a computer. The LED on the USB charger cable lights green indicating that the charger unit is correctly connected to the computer. If you plug in a Quadcopter with a discharged battery, the LED on the USB charging cable lights up red and shows that the Quadcopter battery is being charged. The USB charging cable and the charging socket on the Quadcopter are designed to make incorrect connection impossible.
- It takes about 60 minutes to recharge a discharged battery (but NOT a deep-discharged one). When the battery is fully charged, the LED display on the USB charger cable lights up green again.

5b

To insert the rechargeable battery, open the battery compartment underneath the Quadcopter. Push the battery into the compartment and plug it into the socket there. Then reclose the compartment. **After use: Undo the plugged connection on the Quadcopter when you are not using the Quadcopter. Failure to observe this precaution may cause battery damage!**

Note: when supplied, the lipo-battery is already partially charged. So the first charging cycle may well take less time.

It is essential to follow the connection sequence given above! If you have the charger cable only connected to the quadcopter, and not to a source of electricity, a green LED display indicates that there is still power in the battery. The green LED display does not necessarily indicate the battery is still adequately charged.

Undo the plugged connection on the Quadcopter when you are not using the Quadcopter. Failure to observe this precaution may cause battery damage!

Inserting the batteries in the remote control

- 6 Open the battery compartment with a screwdriver and insert the batteries in the remote control. Please keep in mind the correct polarity. After having closed the compartment you can check all functions of the remote control with the help of the power-switch on the front. With the power switch turned ON and functioning correctly, the top centre LED on the remote control will light up red. When the control LED flashes rapidly, the batteries in the controller must be changed.

Frequency bind between model and remote control

- 7 The Carrera RC Quadcopter and the remote control are frequency bound at purchase. If initially there are any problems with communication between the Carrera RC Quadcopter and the remote control, please carry out a new frequency bind.

- Connect the battery in the model.
- Switch the model ON at the ON/OFF switch.
- **WARNING! Immediately after switching it on, place the Quadcopter on a flat and level surface. The gyro-system will then set itself automatically.**
- The LEDs on the quadcopter now flash rhythmically.
- Switch on the controller at the ON/OFF switch.
- Push the left-hand joystick, i.e. the throttle lever, right to the top, then fully downwards into the zero position.
- The binding has now been successfully established. The LED on the controller now lights continuously.

Range of functions of the remote control

- 8 1. Aerial
2. Power switch (ON / OFF)
3. Control LED
4. Gas Circling
5. Forwards / backwards right / left banking
6. Trimmer for right / left banking
7. Trimmer for forwards / backwards
8. Trimmer for rotation
9. Looping Button
10. Beginner/Advanced switch (30% / 60% / 100%)
11. "Return home" button
12. "Activate compass" button
13. Battery compartment
14. Smartphone holder (Contains no smartphone)
15. "LED lights ON/OFF" button
16. Setign wheel to adjust camera angle



Description of the Quadcopter

- 9** 1. Rotor system
- 2. Rotor protection cage
- 3. ON/OFF switch
- 10** 4. LEDs
- 5. Video camera
- 6. Battery compartment

Choosing the flight area

- 11** The Quadcopter may be flown outdoors. When you have trimmed your Quadcopter properly and are thoroughly familiar with its controls and how it can perform, you can then start to fly it in smaller and more confined spaces. Please be aware that, although it may be calm on the ground, it may still be very windy even a little way off the ground. If this warning is disregarded, it may lead to total loss of the Quadcopter.

Checklist for flight preparation

This checklist is not a substitute for the contents of the operating instructions. Although it can be used as a quick-start guide, we strongly recommend you first to read the operating instructions in detail before you proceed.

- Check the contents of the package.
- Fit the landing feet, smartphone holder and the camera as described under **2 3 4**.
- Connect the charging unit to the source of power.
- Charge the lipo-battery as described in the section "Recharging the Lipo rechargeable battery".
- Fit 8 AA batteries in the controller, making sure their polarity is correct.
- Look for a suitable environment for flying.
- **Read and comply with the legal and safety regulations governing the use of your Quadcopters.**
- Slide the battery into the battery bay on the bottom of the Quadcopter. **5b**
- Switch the model ON at the ON/OFF switch.
- **WARNING! Immediately after switching it on, place the Quadcopter on a flat and level surface. The gyro system will then set itself automatically.**
- The LEDs on the quadcopter now flash rhythmically.
- Switch on the controller at the ON/OFF switch. **Be sure to check the Beginner/Advanced switch (16b).** Push the left-hand joystick, i.e. the throttle lever, right to the top, then fully downwards into the zero position. An audible signal is made.
- Allow the Quadcopter a few moments until the system is correctly initialised and is ready for operation.
- Repeat the above points as required, if you wish to fly more Quadcopters at the same time.
- Bind your smartphone as described in point **17a** with the Quadcopter until you see the camera live picture on the screen. Further details on functions on the camera see point **17 17a 17b**.
- Check the control system.
- Make yourself familiar with the control system.
- Trim the Quadcopter as necessary as described under **20 21 22**, so that when hovering it no longer moves from the spot without a command from the controller.
- The Quadcopter is now ready to be flown.
- If the Quadcopter displays no functions, retry the above binding procedure.
- Fly the model.
- The LED lamps on the model start to flash shortly before the battery is discharged.
- Land the model.
- Switch the model off at the ON/OFF switch
- Disconnect the battery plug connection.
- Always switch off the remote control last.

Flying the 4-channel Quadcopter

NOTE!
Take care particularly in the first few flights to move the lever on the controller very gently and not over-hurriedly. As a rule, only very small movements of the respective levers are necessary to carry out the desired control commands!

If you notice that the Quadcopter moves forwards or to the side without your touching the respective lever, please adjust the trim of the Quadcopter as described in **20 21 22**.

- 12** +/- Gas (up/ down)
To start or to fly higher, push the gas lever on the left cautiously forwards. To land or fly lower, push the gas lever on the left cautiously backwards.
- 13** To make the Quadcopter circle to the left or the right on the spot, move the lever on the left cautiously to the left or the right.
- 14** To fly the Quadcopter to the left or the right, push the lever on the right cautiously to the left or the right.
- 15** To fly the Quadcopter towards or backwards, push the lever on the right cautiously forwards or backwards.

Looping function

WARNING! ONLY FOR EXPERIENCED PILOTS!

- 16a** When you press the looping button **1**, an audible signal sounds until you move the right-hand joystick either up or down, or right or left. The Quadcopter then carries out the loop or roll in the respective direction. Before you do this, make sure you have ample room on all sides (about 4 m - 12').

Beginner/Advanced switch **2**

WARNING! 100% IS ONLY FOR EXPERIENCED PILOTS!

- 16b** 30 % = beginner mode
Signal sounds once on switching over. Looping the loop and rollovers are possible as explained in **16a**.
- 60 % = medium mode
The quadcopter reacts more sensitively than in 30 % mode. Signal sounds twice on switching over. Looping the loop and rollovers are possible as explained in **16a**.
- 100 % = advanced mode -> 3D mode.
The Quadcopter reacts very sensitively to joystick movements. Signal sounds three times on switching over.

Video & photo function

- 17** **WARNING!**
Please note that taking pictures or videos with the built-in camera may infringe the image copy-right and rights of personality of others! A person filmed without his or her permission, for example in the neighbourhood, may take civil action for restraint or claim for damages. Taking pictures of people in other people's residences or gardens protected by sight-screening hedges may also be a criminal offence! Always keep up to date with existing legal provisions.

Use of the Carrera RC App

- 17a** Download in the respective app or playstore the app with the name "Camera RC". The respective QR code you will find on the back of the packing. Connect your smartphone with your Quadcopter's W-Lan. Look for the W-Lan with the name "WIRFPV-BA8C1A". It may be up to about 30 seconds before the W-Lan is found and can be connected. Start the app now.

On the right of the Start Screen you see the "Play" button **17a**; here you enter the flight menu of the app. Use the buttons on the right to get to the help menu or the general settings. Enter the spare parts shop by using this button: **17a**. The spare parts shop opens in the smartphone browser.

Availability in, and delivery of the spare parts to, certain countries is not possible. If necessary, contact the representation in your country, shown on the back of the packing.

- 17b** Functional overview of the flight menu: **17b**

 1. Press this button to take photos
 2. Press this button to take videos
 3. Here you find the photos and videos taken on your smartphone
 4. Here, rotate the camera picture by 180°

General settings in the app **17b**
 „Parameters auto save“: all settings are saved on closing the app
 „Reset the parameters“: all setting will return to factory settings.
 „Reverse the control screen by gravity sensing“: the picture rotates automatically when the smartphone is rotated – the **17b** is no longer visible in the flight menu
 „Right hand mode“: without function

You will find the pictures / videos in the respective picture / video file in your unit. An additional video player may possibly be required.

Altering the camera angle

- 18** Using the setting wheel on the controller top right, the camera angle can be altered (approx. 70°-80° tilt).

Compass mode for integrated "Return home" function

- 19** **Make sure there are no obstructions in the flight path and that there is no wind!**
WARNING! the model is NOT equipped with a GPS system!
Place the Quadcopter on the ground in front of you. Bind the model as described under **7**. Make sure that the blue LED lights are facing towards you.
Press the "Activate Compass" key. **1**
The LEDs on the model now flash slowly and the Quadcopter is now in COMPASS-MODE. You can now perform your flying manoeuvres (all flying manoeuvres are possible).
You can now at any time have the Quadcopter fly back in your direction by pressing the Return home key **2**. When you do this, do not operate the joysticks.
WARNING! As soon as you can recognise the Quadcopter clearly, we recommend you take over the controls again, as the Quadcopter is not able to calculate the distance!
By pressing the "Activate Compass" key once again, you turn the COMPASS MODE off again. Note that the "Return home" key only functions in the COMPASS MODE!

ENGLISH



ENGLISH

FRANÇAIS

Trimming the Quadrocopter

20 When hovering, if the Quadrocopter flies to the left or right without you moving the lever for left / right movement, please proceed as follows:
If the Quadrocopter moves on its own fast or slow sideways to the left, press the lower right trimmer for right / left tilt in steps to the right. If the Quadrocopter moves right, press the trimmer for right / left tilt in steps to the left.

21 When hovering, if the Quadrocopter flies forwards or backwards without you moving the lever for forwards or backwards movement, please proceed as follows:
If the Quadrocopter moves on its own fast or slow forwards, press the upper right trimmer for forwards / backwards in steps downwards. If the Quadrocopter moves backwards, press the trimmer for forwards / backwards in steps upwards.

22 When hovering and without you moving the lever for circling on the spot, if the quadrocopter rotates to left or right, proceed as follows: if the quadrocopter rotates quickly or slowly to the left around its own axis, press the trimmer for rotation below left in steps to the right. If the quadrocopter rotates to the right, press the trimmer for rotation in steps to the left.

If the Quadrocopter can no longer be set to 'neutral' by pressing the trimmer, please carry out the following instructions:
1. Place the Quadrocopter on a flat horizontal surface.
2. Bind the Quadrocopter and the Controller as described in "Binding the model with the Controller".
3. Simultaneously press the gas lever and the towards/reverse lever to the lower right-hand corner. The LED on the Quadrocopter flashes briefly and then lights continuously.
4. The neutral setting is now completed.

Changing the rotor blades

23 Use a smooth narrow object to help draw off a rotor blade if necessary. Make sure that you draw the rotor blade with great care vertically upwards, and hold the motor from below to stabilise it. Screw the rotor blade firmly back on to the quadcopter.

24 **WARNING!**
Be sure to note the marking and colour, also the tilt angle of the rotor blades!
Front left: red – marking "A"
Front right: red – marking "B"
Rear right: black – marking "A"
Rear left: black – marking "B"

Troubleshooting

Problem: Remote control does not work.
Cause: The ON/OFF-power switch is turned "OFF".
Solution: Turn the ON/OFF-power switch "ON".
Cause: The batteries have been wrongly inserted.
Solution: Check if the batteries have been correctly inserted.
Cause: The batteries do not have enough power.
Solution: Insert new batteries.

Problem: The Quadrocopter cannot be controlled with the remote control.
Cause: The power switch on the remote control is turned "OFF".
Solution: First turn the power switch on the remote control "ON".
Cause: The remote control is possibly not correctly (temporarily) bound with the receiver on the Quadrocopter.
Solution: Please carry out the binding procedure as described in "Checklist for flight preparation".

Problem: The Quadrocopter does not lift.
Cause: The rotor blades rotate too slowly.
Solution: Push the throttle up.
Cause: The battery's power is not sufficient.
Solution: Charge the battery (see chapter "Charging the battery").

Problem: During flight, the Quadrocopter loses speed and height without any obvious reason.
Cause: The battery is too weak.
Solution: Charge the battery (see chapter "Charging the battery").

Problem: The quadcopter only flies in a circle or turns over on starting.
Cause: Rotor blades incorrectly fitted or damaged.
Solution: Fit rotor blades / replace rotor blades as described in 23 / 24.

Problem: WiWi-Lan connection not possible.
Cause: The model's power switch is set to "OFF".
Solution: First switch the model's power switch to "ON".

Errors and changes excepted
Colours / final design – changes excepted
Technical changes and design-related changes excepted
Photograms – symbolic photos

F

Chère cliente ! Cher client !

Nous vous remercions pour l'achat de votre modèle éducatif Quadrocopter Carrera RC fabriqué selon le niveau actuel de la technique. Nous avons toujours pour ambition d'améliorer et de perfectionner nos produits et nous réservons la possibilité de réaliser des modifications techniques relatives à la présentation et design de nos produits. Les divergences de faible importance du produit, que vous avez acheté, par rapport aux données et illustrations de ces instructions de montage et d'utilisation sauraient donner lieu à des réclamations de ce fait. Ces instructions de montage et d'utilisation font partie intégrale du produit. Le fabricant décline toute responsabilité en cas d'incorrection des instructions de montage et d'utilisation et des consignes de sécurité y figurant. Veuillez conserver ces instructions de montage et d'utilisation, ainsi que vous puissiez les consulter ultérieurement et les remettre à tout utilisateur de ce véhicule si besoin est.

Vous trouverez la version la plus actuelle de ce mode d'emploi et les informations sur les pièces de rechange disponibles sur carrera-rc.com dans la zone de service.

ATTENTION! Assurez-vous avant le premier vol qu'une obligation d'assurance légale existe dans votre pays concernant le modèle d'avion dont vous avez fait l'acquisition. Pour ce modèle, nous vous conseillons de souscrire une assurance !

Conditions de garantie

Les produits Carrera sont des produits de qualité technique élevée (PAS DE JOUET) qui devraient être manipulés avec précaution. Veuillez impérativement respecter les indications du mode d'emploi. Tous les éléments sont soumis à des contrôles approfondis (sous réserve de modifications techniques et des véhicules destinés au perfectionnement du produit).
La responsabilité du fabricant est cependant engagée aux termes des conditions de garantie ci-après à supposer que le produit présente des défauts :
La société Stadbauer Marketing - Vertrieb GmbH (ci-après désignée «Fabricant») garantit au client final (ci-après désigné «Client») selon les clauses suivantes que le modèle éducatif Quadrocopter Carrera RC livré au client (ci-après désigné «Produit») sera exempt de vices de matériel ou de fabrication durant une période de deux ans à partir de la date d'achat (délai de garantie). Le fabricant éliminera de tels vices selon sa propre appréciation à ses frais en les réparant ou en livrant des pièces neuves ou ayant subi une révision générale. La garantie ne s'étend pas aux pièces d'usure (par exemple la batterie, les pales de rotor, le recouvrement de cabine, la roue dentée), aux dommages dus à un traitement d'utilisation non conforme ou à des sinistres externes. D'autres revendications du client, en particulier de dommages et intérêts, contre le fabricant sont exclus.
Les droits contractuels ou légaux du client (exécution ultérieure, résiliation du contrat, réduction du prix, dommages et intérêts) vis-à-vis du vendeur correspondant, droits existant si le produit n'était pas exempt de vices lors du transfert du risque, ne sont pas concernés par cette garantie.

Les droits issus de cette garantie du fabricant spéciale s'entendent que si
• le vice réclamé ne repose pas dans des dommages qui résultent d'un emploi non conforme ou non d'après aux directives prescrites dans le mode d'emploi,
• il ne s'agit pas de signes d'usure dus à l'emploi,
• le produit ne présente aucun signe qui permette de constater que des réparations ou d'autres interventions ont été effectuées par des ateliers non autorisés par le fabricant,
• le produit n'a été utilisé qu'avec des accessoires autorisés par le fabricant et



DISTRIBUTORS

AUSTRIA
Stadbauer Marketing +
Vertrieb GmbH
Rennbahn Allee 1
A-5412 Puch / Salzburg
Phone ++43 662 88921-0
Fax ++43 662 88921-512
Internet www.carrera-rc.com

GERMANY
Stadbauer Marketing +
Vertrieb GmbH
Rennbahn Allee 1
A-5412 Puch / Salzburg
Phone ++49 011 7000-0
Fax ++49 011 7000-119
Internet www.carrera-rc.com

HONG KONG
Stadbauer HKQ Ltd.
Room 1217,
North Tower,
Concordia Plaza
1 Science Museum Road,
Tsimshatsui East
Kowloon Hong Kong
Phone ++852 2722 0620
Fax ++852 2367 0792
Internet www.carrera-rc.com

USA / CANADA / MEXICO
Carrera of America Inc.
2 Corporate Drive
Cranbury,
NJ 08512,
USA
Phone ++1 800 400 8510
Fax ++1 800 400 8510
Email reception@carrera-toys.com
Internet www.carrera-rc.com

BENELUX
Stadbauer Marketing +
Vertrieb GmbH
Landsharpen 39
NL-6114 MP Susteren
Email service@benelux
carrera-toys.com
Internet www.carrera-rc.com

FRANCE
Stadbauer Marketing +
Vertrieb GmbH
21 B. Route Nationale
Domaine de L'Honandrie
FR-59380 Ermaubiers-En-Weppes
Email carrera-toys@orange.fr
Internet www.carrera-rc.com

HUNGARY
Megyerország Importer
Stadbauer Marketing +
Vertrieb GmbH
Rennbahn Allee 1
A-5412 Puch / Salzburg
Phone ++36 305556502
Email office@stadbauer-toys.hu
Internet www.carrera-rc.com
Service:
GAME PARK - VINCZE ZOLTÁN
Borky Utca 38
1171 Budapest, Hungary
Phone ++36 1 258 7800
Email vhz@jet-online.hu

POLAND
Stadbauer Marketing +
Vertrieb GmbH
Rennbahn Allee 1
A-5412 Puch / Salzburg
Phone ++48 22 645 14 20
Fax ++48 22 645 14 21
Email office@stadbauer-toys.pl
Internet www.carrera-rc.com
Service:
REKOMAN
ul. Fabryczna 14
53-600 Wrocław
Poland
Phone ++48 71 350 46 19
Fax ++48 71 350 46 21
Email jbojdar@rekoman.com.pl

REKOMAN
ul. Fabryczna 14
53-600 Wrocław
Poland
Phone ++48 71 350 46 19
Fax ++48 71 350 46 21
Email jbojdar@rekoman.com.pl

CARRERA RC DISTRIBUTORS

AUSTRALIA
Zimblar Pty Ltd
500 Heidelberg Road
Nashua, Victoria 3079
Australia
Phone ++61 3 8481 1000
Fax ++61 3 9407 2911
Email sales@zimblar.com.au
Internet www.zimblar.com.au

BULGARIA
Nashua Ltd.
78a, Maria Luiza Blvd.
BG-1003 Sofia
Phone ++359 283 22020
Fax ++359 283 22020
Email kivanchev@del.bg

CHINA
Shanghai Wotgame Commercial
Company Ltd.
Room 110, Tower 1,
German Centre, 88 Keyuan Road,
(Zhangjiang Hi-Tech Park),
Pudong, Shanghai, (Zip: 201203)
China
Phone ++86 21 5382 1622
Mobile ++86 15577449430
Email eddychan@wotgame.com.cn
Internet www.wotgame.net.cn

CZECH REPUBLIC
CorQuest entertainment a.s.
Hlubětínská 11
CZ-108 00 Praha 9 - Hlubětín
Phone ++420 284 000 175
Fax ++420 284 000 101
Email radim.kalosek@corquest.cz
Internet www.autodrahycz

ESTONIA
Anvot Ltd.
Mokkise 7
EE-24114 Maardu
Phone ++372 69 88 100
Fax ++372 69 88 101
Email anvot@anvot.ee
Internet www.anvot.ee

GREECE
Eparis Dynamic Media Ltd.
68, Ks. Iliou Street
11744, Neos Kosmos
Athens
Greece
Phone ++30 210 201 1000
Fax ++30 210 2033700
Email info@eandis.eu
Internet www.eandis.eu

HONG KONG
Chun Lee (China) Industrial Limited
RM. 1801-5, 18/F,
King Palace Plaza,
52A She Tsui Road,
Tsim Wan,
KLT Hong Kong
Email eddychan@toyulao.com
Mobile ++852 2103 6672

INDIA
Karma Solutions
121A, Dehivasa Industrial Centre,
Link Rd - Koregaon (W),
Mumbai - 400104
India
Phone ++91 22 88718714
Mobile ++91 9990075400
Email karma@solutions2@gmail.com
Internet www.karma-toys.com

ISRAEL
TOP PLAY ISRAEL (TP) LTD
Simbat Atavor Str. BA - Industrial
Zone Sagula-Patach-Tikva, 4069108
Israel
Phone ++972 3 9323767
Fax ++972 3 9086074
Mobile ++972 52 8338066
Email topplay012.net.il
Internet www.TopPlay-toys.com

LEBANON
F. ADUAD
P.O.Box 1695 - Jounieh Lebanon
Twin Towers Building Bld A
Serbia High Way
Jounieh - Lebanon
Phone ++961 3 84 0505
Fax ++961 3 635-473
Email fawade@dm.net.lb
riad.rousse@fawad.com

NEW ZEALAND
F W Cava Ltd.
15 Old North Road
P O Box 279
Kumeu 08-41
Auckland - New Zealand
Phone ++64 9 415 7766
Fax ++64 9 415 7000
Email sales@fwcava.co.nz
Internet www.fwcava.co.nz

ROMANIA
Seven Sprinproam srl.
Piata 22 Decembrie nr. 18
RO 610007 Pitesti Neamt, jud. Neamt
Phone ++40-233-221117
Email office@sevenro.com
Internet www.sevenro.com

RUSSIA
Unitoys MSK Ltd.
Minviki Street 7, Building 2
RU-123308 Moscow
Phone ++7 495 276 0266
Fax ++7 495 946 4616
Email office@unitoys.ru
Internet www.unitoys.ru

SERBIA / MONTENEGRO
Cool Play d.o.o.
Zivko Davidovica 13
11000 Beograd - Serbian
Phone ++381 11 3800143
Fax ++381 11 3800144
Email office@coolplay.rs

SWITZERLAND
Waldmeier AG
Neustrasse 50
CH-4629 Neudorf
Phone ++41 62 387 28 18
Fax ++41 62 387 28 20
Email info@waldmeier.ch
Internet www.waldmeier.ch

UNITED KINGDOM
The Hobby Company Ltd
Carruth Place, Knowlhill
Milton Keynes MK5 8PC - UK
Phone ++44 1208 209 480
Fax ++44 1208 209 200
Email enquiries@hobbyco.net
Internet www.hobbyco.net

UNITED ARAB EMIRATES
Toyworld Distributor
P.O. Box 299, China Building
Al Waslita Street, Sharjah
United Arab Emirates
Phone ++971 6 533 7418
Fax ++971 6 533 6882
Email toyworld@tawalaholding.net



carrera-rc.com

Stadbauer Marketing + Vertrieb GmbH · Rennbahn Allee 1 · 5412 Puch / Salzburg · Austria