

# eKEY® Fob

## User Instructions

July 2011  
© 2011 UTC Fire & Security. All rights reserved.

### Introduction

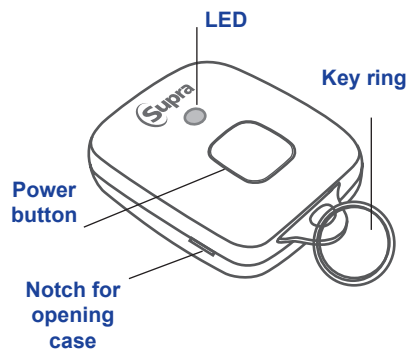
The eKEY Fob is a device used to translate the Bluetooth signal from your eKEY enabled smartphone to an infrared signal that can be recognized by an iBox.

The eKEY Fob is compatible with the following smartphones:

- Android
- BlackBerry

The eKEY fob has a power button and an LED light and a key ring for easy placement on your key chain. (Figure 1).

Figure 1. eKEY Fob II



### Pairing your eKEY Fob

Before your smartphone and eKEY Fob can communicate, they first need to be paired. Pairing allows two Bluetooth devices to communicate with each other.

To pair your smartphone and eKEY Fob:

1. Open the eKEY application.
2. Select **Obtain Key** and enter your PIN code.
3. Press and hold the power button on the eKEY Fob for 1/2 second until the green light flashes.
4. When you are prompted to enter a passkey, enter **0000**.

### Using your eKEY Fob

**Note:** To use the eKEY software you must subscribe to eKEY service through your Association/MLS.

To use your eKEY Fob, start the iBox operation (Obtain Key, Release Shackle, or Add, Read, or Program iBox) in your eKEY software. You have five minutes after starting the operation in the eKEY software before you have to power on the eKEY Fob.

When prompted, power on the eKEY Fob by pressing and holding the power button until the green light flashes. When prompted by the eKEY software, point the eKEY Fob towards the infrared port on the iBox.

**Tip:** When you power on the eKEY Fob, you'll want to be at the iBox.

The fob turns off automatically after an operation and after it has been inactive for 30 seconds.

Table 1 describes the fob's LEDs.

Table 1. LED descriptions

LED	Description
Green, slow blink	Searching for eKEY
Green, fast blink	Communicating with eKEY
Red, blink	Low battery

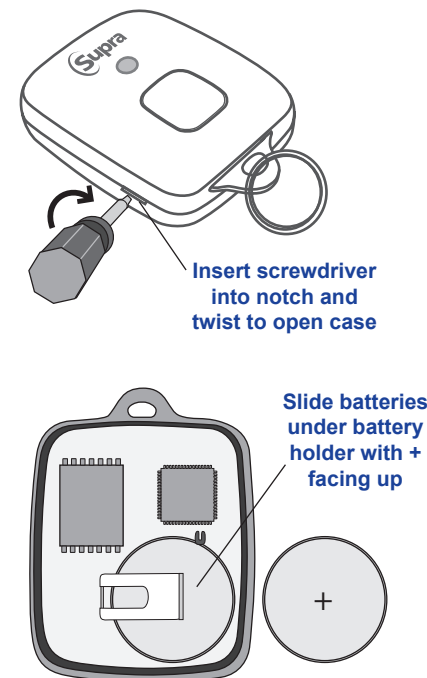
### Changing the Batteries

The eKEY fob comes with two CR2016 lithium coin batteries. You will need to replace the batteries when the red LED flashes. Battery life is subject to usage, conditions, and type of battery used.

To replace the batteries:

1. Insert the tip of a flathead screwdriver into the notch on the side of the eKEY Fob and turn to open the case.
2. Remove the existing batteries.
3. Replace with two new CR2016 batteries with the + polarity facing up on both batteries.
4. Replace the cover and snap to close.

Figure 2. Changing the batteries



For proper recycling, dispose of all batteries as required by local ordinances or regulations.

### Trademark

Supra and eKEY are trademarks of UTC Fire & Security. Bluetooth and the Bluetooth logo are trademarks of Bluetooth SIG.

### Warranty

UTC Fire & Security warrants the eKEY fob for a period of one year after the date of purchase under normal use against defective workmanship and materials (batteries excluded). The warranty does not cover damage resulting from accident, unreasonable use, negligence, improper service or other causes not arising out of defects in material or workmanship.

### FCC

This device complies with part 15 of the FCC rules. Operation is subject to the following conditions:

5. This device may not cause harmful interference.
6. This device must accept any interference received, including interference that may cause undesired operation.

Changes or modifications not expressly approved by the party responsible for compliance could void the user's authority to operate the equipment.

**2002/96/EC (WEEE directive).** Products marked with this symbol cannot be disposed of as unsorted municipal waste in the European Union. For proper recycling, return this product to your local supplier upon the purchase of equivalent new equipment, or dispose of it at designated collection points. For more information, visit [www.recyclethis.info](http://www.recyclethis.info).

**RoHS**  
COMPLIANT

### Technical Support

877.699.6787, 6am to 7pm Pacific time  
[www.supraekey.com](http://www.supraekey.com)