

# TRAC-Vault BT • Surface Mount

## Installation Instructions

P/N 10103266P1 • August 2012  
© 2012 UTC Fire & Security. All rights reserved.

### Introduction

The TRAC-Vault BT is an intelligent storage device that holds multiple keys or access cards and records a comprehensive audit trail of who accessed it and when.

The following hardware is recommended for this installation:

- Four HECO MMS-SS 10 x 100 screws

For best results, consult with a local fastener or hardware store.

You can order an installation kit from Supra that contains all the necessary hardware for installing the TRAC-Vault BT. An interior cover plate is also available.

### TRAC-Vault BT installation

Install the TRAC-Vault BT in a location convenient for your keyholders. To meet ADA requirements, the unit must be installed 48 inches from the ground to the center of the device.

To install the TRAC-Vault BT, you will need the following equipment:

- Drill
- Drill bits
- Wrenches
- Pliers or vice grips
- Level or punch
- Pen or pencil
- Dremel tool or hacksaw

To install the TRAC-Vault BT on a rendered wall:

1. Hold the vault in the desired position on the wall, being careful to locate the four mounting holes away from mortar lines and away from the edge of the wall as well as possible.
2. Using a marker, trace the location of all 4 mounting holes.
3. Using a drill with an 8 mm masonry drill bit, drill each hole to a depth of 105 mm. After drilling each hole,

Figure 1. Mounting holes

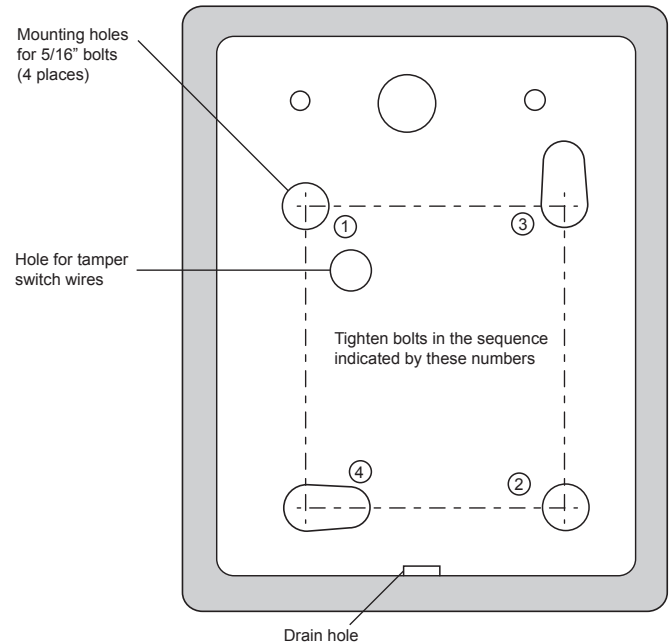
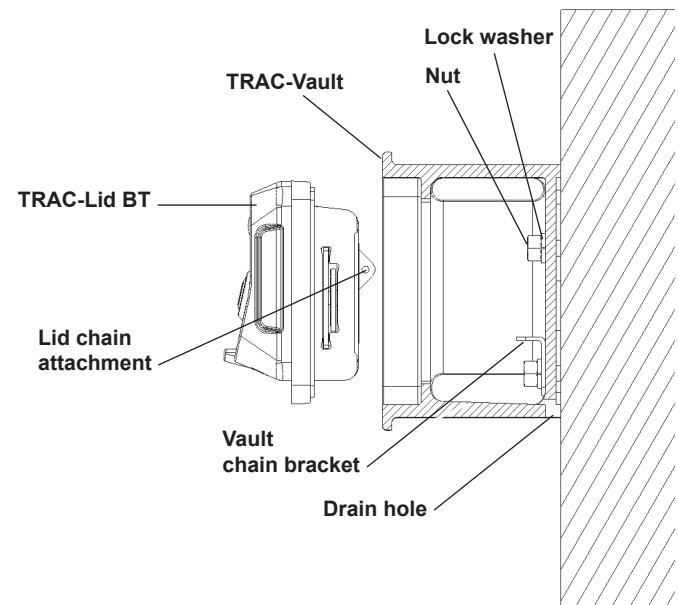


Figure 2. TRAC-Vault, side view



ensure that each hole aligns with the 4 holes in the back of the vault.

4. Clean out the debris from all 4 holes.
5. Insert one of the HECO mounting screws onto the chain mounting bracket.
6. Place the TRAC-Vault up to the wall (drain hole

down) and insert each mounting screw all the way through the mounting holes in the vault, with the chain mounting bracket in the lower left hole.

7. Tighten all 4 screw heads in the order shown in Figure 1 until they are flush with the back of the vault, and behind the vault lip.
8. Using the appropriate driver, drive all 4 screws into the wall a little at a time until all 4 screws are driven completely in and the vault is tight against the wall.

To install the TRAC-Vault BT through the wall:

1. Before drilling, ensure that no interference will occur with any plumbing, electrical, fire or security systems, etc.
2. Once the location for the unit has been decided, level the template on the wall and punch or mark the holes for drilling (see Figure 1).
3. Using the correct bit for the type of wall, drill sufficiently large holes to accommodate the 5/16" all-thread rod.
4. Insert a lock washer and a nut on three of the four all-thread rods. On the fourth, install a lock washer, the chain mounting bracket, and then the nut. It is important that the end of all-thread rod is flush with the nut.
5. Put the Vault up to the wall (drain hole down) and insert two all-thread rods through the top two mounting holes. Insert the all-thread rod that you have attached the chain mounting bracket to through the lower left hole. Insert the last all-thread rod into the bottom right hole. (See Figure 5.)
6. On the other side of the wall, mount the interior cover plate (optional) onto the all-thread rods. Put a 5/16" fender washer, and a 5/16" lock washer on

Figure 3. Optional Tamper Switch

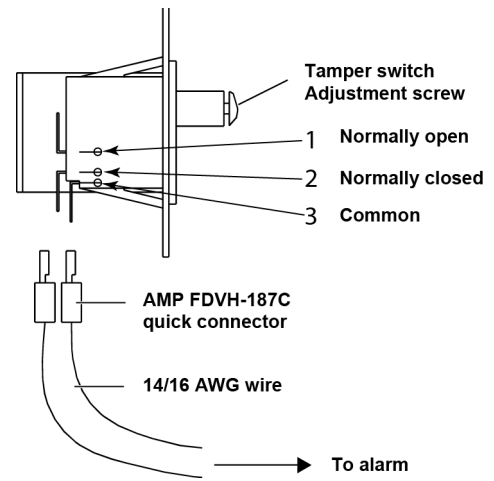


Figure 4. Installed TRAC-Lid

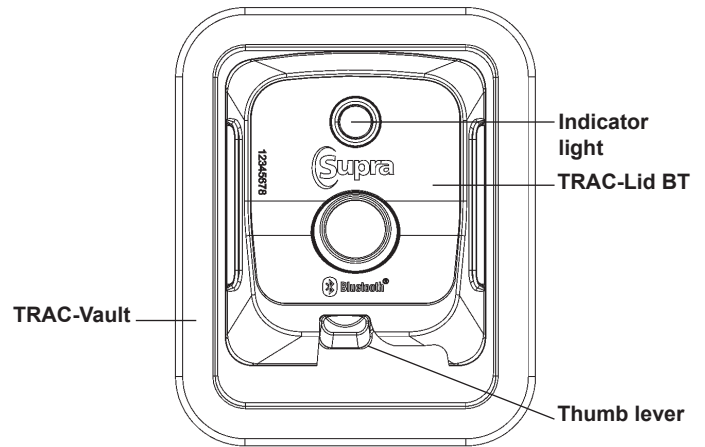
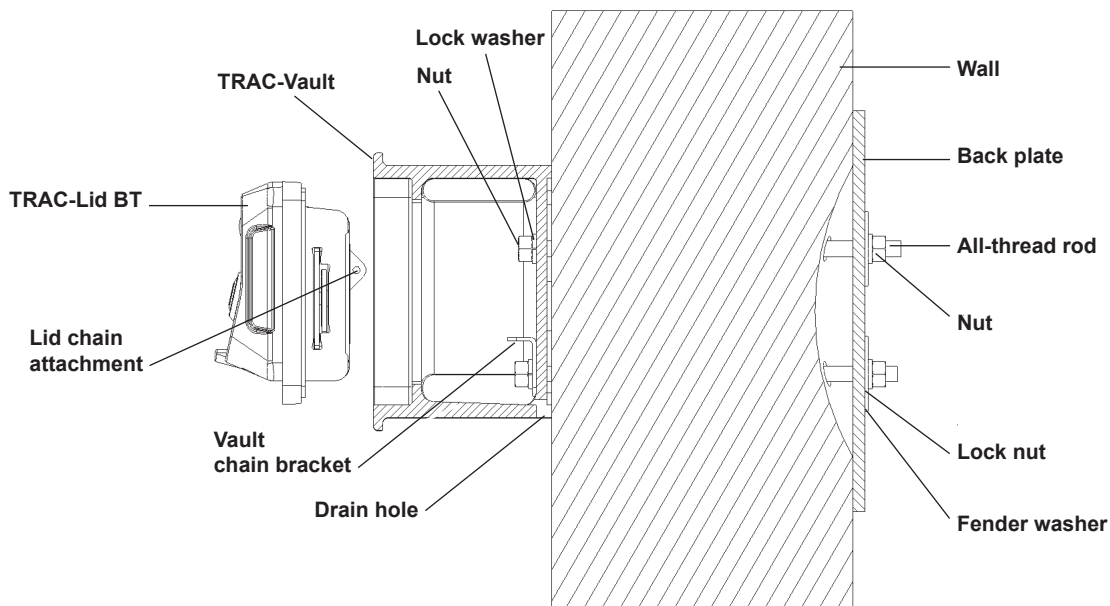


Figure 5. Side view, TRAC-Vault BT installed through the wall



each of the all-thread rods. Last, put a 5/16" nut on each rod and hand tighten without letting the rod rotate. (See Figure 5.)

7. With one hand, grip the end of the all-thread rod with either a plier, or vice grip. Then, with the other hand, tighten the nut with a 1/2" wrench while making sure the Vault stays level. Repeat this procedure for all four rods, and tighten to approximately 50-75in-lb or until firmly snug. Cut off the excess all-thread rod using an appropriate tool.

## Tamper Switch (Optional)

If you are using the optional tamper switch, attach the tamper switch to the wiring in the wall (see Figure 3).

*Note: Tamper switch wiring must conform to NEC class 2 or 3; or UL class 634 standards. Electrical range should be 30 VDC at 50 MA. Use AMP FDVH 187C (14/16 AWG) crimp connectors, or equivalent.*

## TRAC-Lid BT installation

To install the TRAC-Lid BT in the TRAC-Vault BT, attach the provided chain to the TRAC-Lid BT. Insert the loose end of the chain through the eyehole on the back of the TRAC-Lid BT, then crimp the end of the chain to the bracket inside the TRAC-Vault BT.

To place the TRAC-Lid BT in the TRAC-Vault BT, the lock blades on the side of the TRAC-Lid BT must be retracted.

To retract the blades on the TRAC-Lid BT, do the following:

1. Use a DisplayKEY or eKEY to perform the open device function. Refer to the user instructions provided with your key for step by step operation.
2. When the indicator light on the TRAC-Lid BT flashes green, rotate the thumb lever 90° down until it stops.

**Important:** When installing a TRAC-Lid BT you **MUST** record the serial number of the TRAC-Lid BT installed at each location. This important information is necessary for the integrity of the TRACcess database.

## Regulatory Compliance

### United States (FCC)

This device complies with part 15 of the FCC rules. Operation is subject to the following conditions:

1. This device may not cause harmful interference.
2. This device must accept any interference received, including interference that may cause undesired operation

Changes or modifications not expressly approved by the party responsible for compliance could void the user's authority to operate the equipment.

### Canada (IC)

This Class B digital apparatus complies with Canadian ICES-003. Cet appareil numérique de la classe B est conforme à la norme NMB-003 du Canada.

Cet appareil se conforme à l'Industrie la norme (s) RSS exempte du permis du Canada. L'opération est soumise aux deux conditions suivantes : (1) cet appareil peut ne pas provoquer l'interférence et (2) cet appareil doit accepter toute interférence, en incluant l'interférence qui peut provoquer l'opération indésirable de l'appareil.

### European Union (CE)

This Class B digital apparatus conforms to the requirements of the following EU directives:

1. R&TTTE Directive (1999/5/EC)
2. WEEE Directive (2002/96/EC)

## Warranty

UTC Fire & Security (UTCFS) warrants that this product will be free of defects in material and workmanship for one year from the date of purchase. This warranty is limited to repair or replacement at the option of UTCFS. Damages caused by modification, abuse or misuse, wear and tear, improper installation, application, storage, or fault or negligence of a party other than UTCFS are not covered. UTCFS will be responsible for labor costs of removal or reinstallation of products. The repaired or replaced product is then warranted under the terms of this limited warranty for the balance of the term of the warranty or for 90 days, whichever is longer. UTCFS MAKES NO OTHER WARRANTY, EXPRESS OR IMPLIED, OF MERCHANTABILITY OR FITNESS FOR A PARTICULAR PURPOSE. IN NO EVENT SHALL UTCFS BE LIABLE FOR LOSS OF USE; LOST PROFITS; THEFT; PROPERTY DAMAGE; OR SPECIAL, INCIDENTAL, OR CONSEQUENTIAL DAMAGES. To obtain repair or replacement information under the terms of this warranty, please contact your local supplier.