

# AE185 ACTIVE CONTROL FUNCTIONS

## FOR MONORAL OPERATION:

Plug a standard 1/4" guitar cable into the Main Jack, and the power to the active controls will be switched on. The outputs of both the Acoustic (Piezo) and the Electric (Magnetic) pickups will come through this one jack, with all controls operational.

## PLAN A:

Plug into a single channel amp that has a footswitch distortion section. Turn distortion off when playing acoustic, then (if you want distortion) turn it on when you turn the blend pot to electric.

## PLAN B:

Plug into a single channel amp that has a footswitchable EQ section. Optimize the Tone settings for Electric/Graphic EQ for Acoustic.

## FOR STEREO OPERATION:

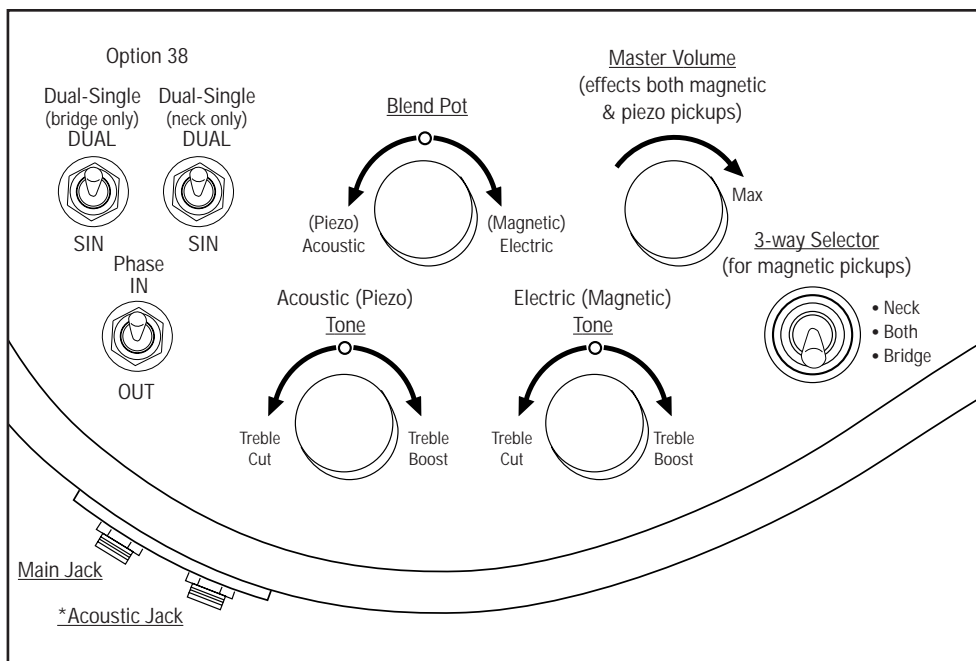
Plug one standard 1/4" guitar cable into the Main Jack, and a second standard 1/4" guitar cable into the Acoustic Jack. Now the Piezo output will be directed out of the Acoustic Jack and the Magnetic output will be directed out of the Main Jack, with all controls operational.

## PLAN A:

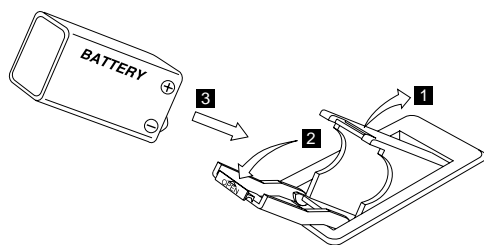
Plugging into separate channels on most dual channel amps will allow you to optimize the Tone and Drive sections for the Magnetic and Piezo outputs. With the Blend Pot centered, the footswitch on these amps will then let you select between acoustic or electric pickup.

## PLAN B:

This will give the best possible sound for both the electric and acoustic. Plug the Main Jack into a guitar amp and the Acoustic Jack into a P.A. system with full range speakers that have tweeters. Use the Blend Pot to go between electric & acoustic sounds, or mix them together.



## POP-UP BATTERY COMPARTMENT



With 20 hours use per week a 9 volt alkaline battery will last about six months. A lithium battery will last about a year.

**Important:** Unplug instrument when not in use to eliminate battery drain.

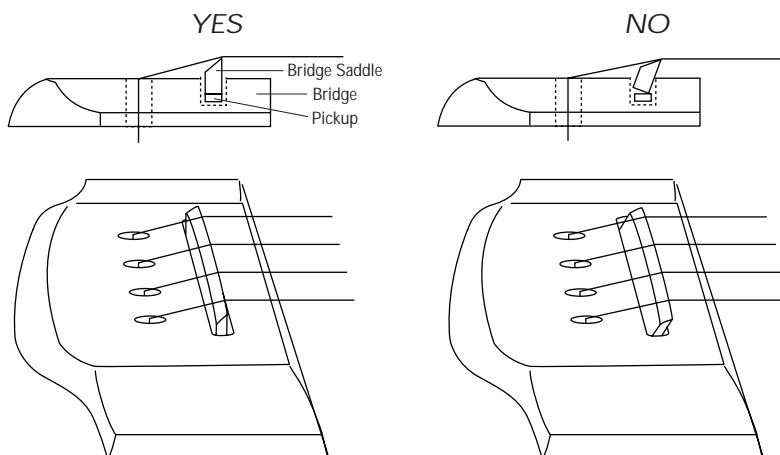
If any minor distortion is detected when you play hard, then you should change the battery. Minimum voltage requirement—7 volts.

**Important:** The pop-up compartment is designed so that the lid will close easily if the battery is installed properly, with the positive terminal of the battery matching that of the pop-up compartments. See illustration for proper battery installation.

If you try to force the compartment lid shut with the battery terminals reversed, you may damage the electronic module.

Always unplug your instrument from the amp when changing the battery to prevent damage to your electronic module.

## PROPER ANGLE FOR BRIDGE SADDLE



**Important:** For best amplified acoustic sound with even output from each string, make sure that your Bridge Saddle is sitting straight up and not angled forward. This should be checked and corrected every time you change strings. With the strings tuned to pitch, use a small hammer and piece of wood dowel and lightly tap the Saddle toward the rear of the bridge until it is sitting upright.

# CARVIN

12340 World Trade Drive, San Diego, CA 92128  
1-800-854-2235 or www.carvin.com