

SERVICE MANUAL

(without price)

ELECTRONIC CASH REGISTER

PCR-T265/PCR-T275/TE-M80

(EX-270)

AUG. 2003 (UK, Germany, U.S.A)

SEP. 2003 (Other countries)



CASIO®

CONTENTS

TE-M80	Page
1. SPECIFICATIONS	1
2. MACHINE INTIALIZATION	3
3. BLOCK DIAGRAM	4
4. DISASSEMBLY	5
5. CIRCUIT EXPLANATION	10
5-1. CPU (IC12: uPD784215AGC8038EU)	10
5-2. Power circuit	14
5-3. Reset circuit	14
5-4. Printer drive circuit	15
5-5. Display circuit	15
5-6. Winding motor circuit & Drawer circuit	16
6. DIAGNOSTIC OPERATIONS	17
6-1. Content of the Test	17
6-2. Displaying the Key Code	17
6-3. Displaying the Switch Condition	18
6-4. Printing and Display test	19
7. TROUBLESHOOTING	21
8. IC DATA	22
9. CIRCUIT DIAGRAM	23
10. PARTS LIST	28

1. SPECIFICATIONS

1-1. Electrical specifications

		120 V	220 V	230 V	240 V
• Power consumption	In operation Max.	0.22 A	0.13 A	0.13 A	0.13 A
• Memory protection	Back-up battery Back-up period Battery life	Mangan Battery (UM-3 × 3 pcs) 1 year (25 °C) Replace the battery every 1 years.			
• Clock & Calendar	Accuracy Auto calendar	Within ± 30 sec. per month Effective until 2099 A.D.			

1-2. Environmental specifications

• Operating temperature	0 °C ~ 40 °C
• Operating humidity	10 % ~ 90 %
• Storage temperature	-25 °C ~ 65 °C
• Storage humidity	10 % ~ 95 %
• Vibration strength	1.5 G (The machine must be in the carton box)

1-3. Main components

• CPU	Name Number of control bit Mask ROM (Built-in) RAM (Built-in)	UK: μPD784215AGC2368EU U.S.A./CANADA: μPD784215AGC2378EU Other countries: μPD784215AGC2388EU 16 bit 128 Kbytes 5120 bytes
• Thermal printer	Name Print method Head specification Paper cut Paper supply method Life	LTPZ225B-C192 Impression heat line dot Total dot number : 192 dots/dot line Dot pitch : Length 4 dots/mm Wide 4 dots/mm Manual-paper cut Drop-in paper loading 20 million pulses 10 km (anti-abrasion)
• Roll paper	Type Size Roll diam Thickness	Heat-sensitive paper 58 +0/-1 mm φ 80 or less 75 ± 3μm

1-4. Drawer List

DRAWER NAME	Specification	NOTE
• DL-1329 (S type)	D-21G2M-D54RM-16	U.S.A
• DL-1841 (S type)	D-21G2M-CD53RM-16	Germany, Europe, Other countries
• DL-2794 (M type)	D-18G2C-A84RM-13	Europe, Other countries
• DL-2796 (M type)	D-18G2C-A84RM-13	UK/Canada

1-5. Option List

DEVICE NAME	MODEL	NOTE
• Wet cover	WT-80	
• Roll paper	TRP-5880-TW	
• Roll paper	TRP-5880H-TW	
• Cash Tray	CTR-48	
• Cash Tray	CTR-47	
• Cash Tray	CTR-39	
• Cash Tray	CTR-50	
• Cash Tray	CTR-52	
• Tray Lid	SLD-3	

CAUTION

Danger of explosion if battery is incorrectly replaced.

Replace only with the same or equivalent type recommended by the manufacturer.

Dispose of used batteries according to the manufacture's instructions.

VORSICHT !

Explosionsgefahr bei unsachgemäßem Austausch der Batterie.

Ersatz nur durch denselben oder einen vom Hersteller empfohlenen gleichwertigen Typ.

Entsorgung gebrauchter Batterien nach Angaben des Herstellers.

ADVARSEL !

Lithiumbatteri - Eksplosionsfare ved fejlagtig håndtering.

Udskiftning må kun ske med batteri af samme fabrikat og type.

Levér det brugte batteri tilbage til leverandøren.

2. MACHINE INTIALIZATION

2-1. Initialization and loading memory protection battery

Note: You must initialize the cash register and install the memory protection batteries before you can program the cash register.

To initialize the cash register

1. Set the mode switch to OFF.
2. Plug the power cord of the cash register into an AC outlet.
3. Load the memory protection batteries.
4. Set the mode switch to REG.

To load the memory protection batteries

1. Remove the printer cover.
2. Press down on the oval just behind the printer paper inlet, and slide the battery compartment cover toward the back of the cash register.
3. Load 3 new UM-3, R6P (SUM-3) or LR6 (AM-3) type batteries into the compartment.
Be sure that the plus (+) and minus (-) ends of each battery are facing in the directions indicated by the illustrations inside the battery compartment.
4. Slide the memory protection battery compartment cover back into place.
5. Replace the printer paper and printer cover.

REPLACE MEMORY PROTECTION BATTERIES AT LEAST ONCE EVERY YEAR.

2-2. To select the language

You can select the default printing language depending on the requirements in your area.

Example: Change the language to Spanish.

1. Set the mode switch to PGM.
2. Press the following keys.



Select numbers from list A.

Language selections	
A	English 1 9 9 9
	Spanish 2 9 9 9
	French 3 9 9 9
	German 4 9 9 9

2-3. To select date format and monetary mode

You can select the date format and the monetary mode.

Example: Change the date format to Month/Day/Year, and the monetary mode to Add 0.

1. Set the mode switch to PGM.
2. Press the following keys.

3 **SUB TOTAL** P3 appears in mode display

0 1 2 2 **SUB TOTAL** Program set code number

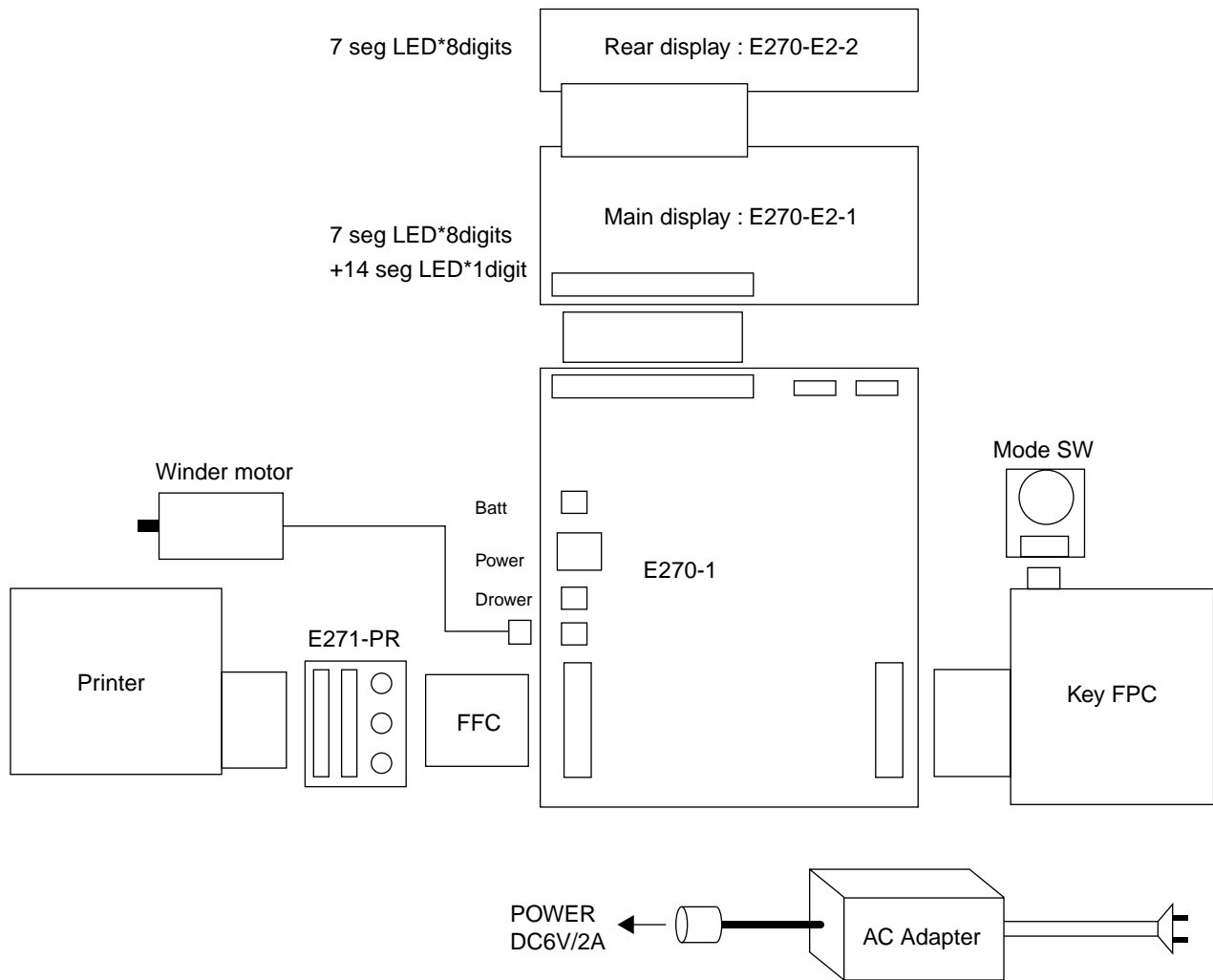
1 0 **CA/AMT /TEND** Select numbers from lists B and C.

SUB TOTAL (To end the setting)

Date format selections	
B	Year/Month/Day 0
	Month/Day/Year 1
	Day/Month/Year 2

Monetary mode selections	
C	Add 0 (0.) 0
	Add 1 (0.0) 1
	Add 2 (0.00) 2

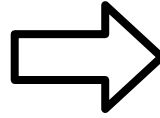
3. BLOCK DIAGRAM



4. DISASSEMBLY

■ Removing the register

1. Remove the journal cover and then the WINDING PULLY.



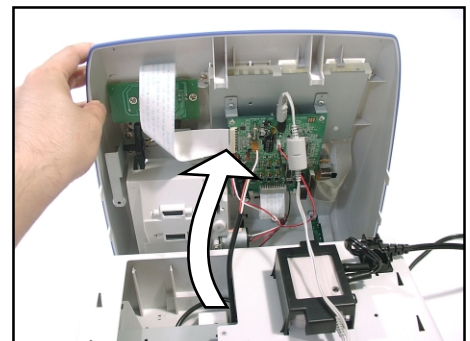
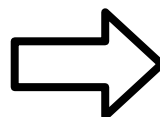
2. Remove the battery cover and then the battery.



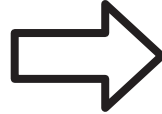
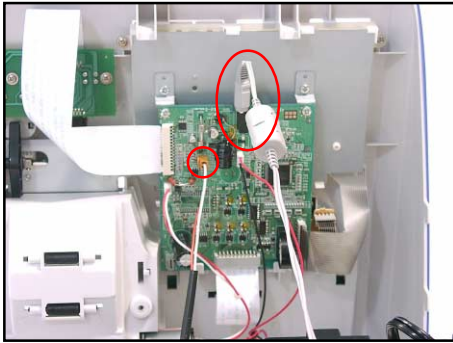
3. Remove the two screws.



4. Separate the main unit as shown below.

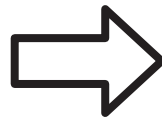
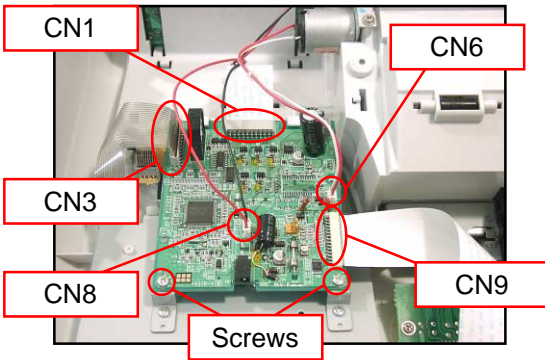


5. Remove the connector (CN7) as well as the power jack, and then separate the main unit from the drawer.



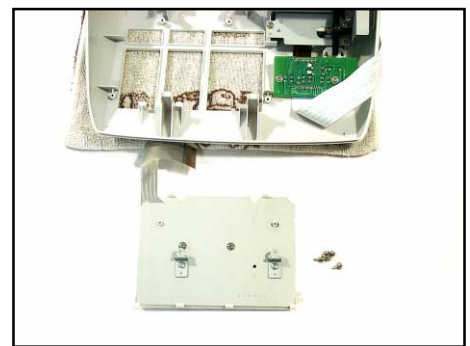
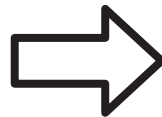
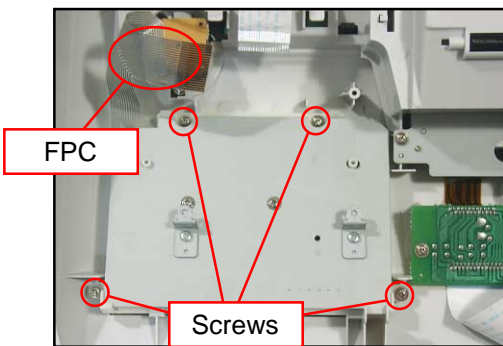
■ Removing the main PCB

6. Remove the connectors (CN6, CN8), FPCs(CN1, CN3, CN9) and the two screws and then remove the main PCB.

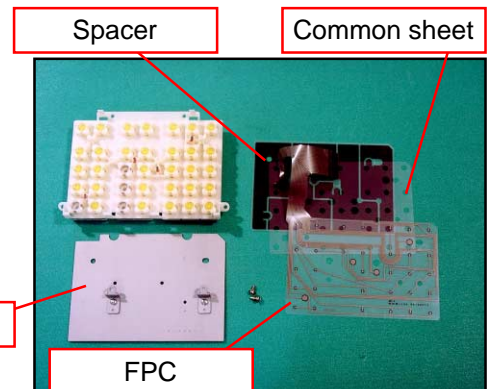
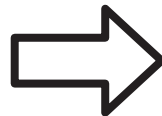
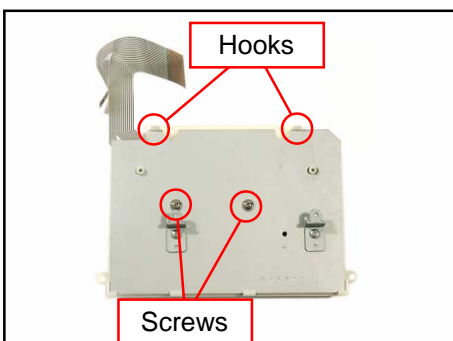


■ Disassembling the keyboard unit

7. Remove the FPC as well as the four screws, and then the keyboard unit.



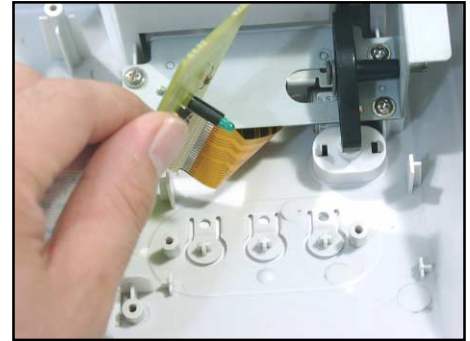
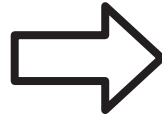
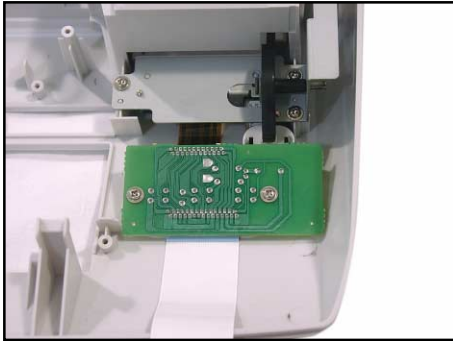
8. Remove the two screws and then disassemble the keyboard unit.



■ Removing the switch PCB (E270-PR)

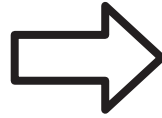
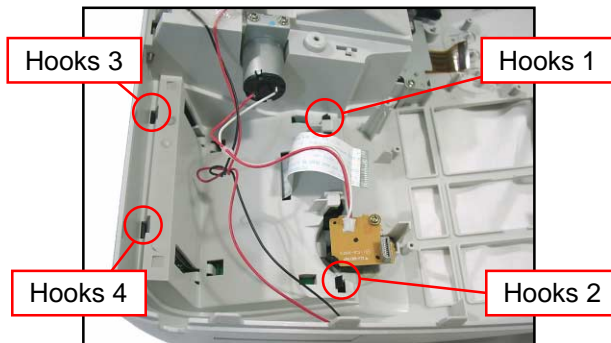
9. Remove the two screws.

Lift up the PCB and remove the FPC and then the PCB.



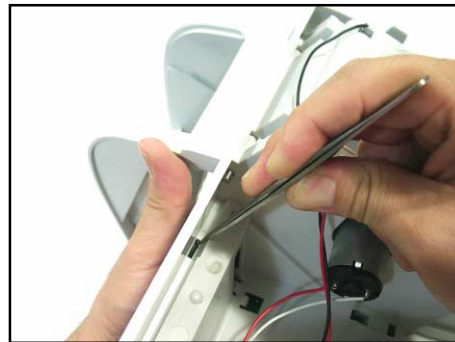
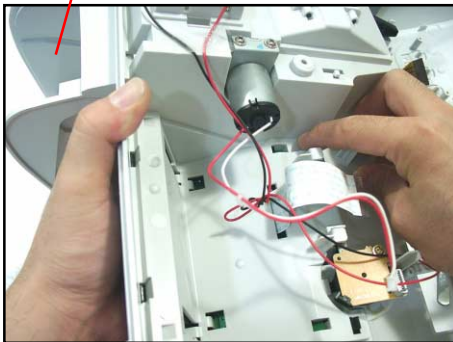
■ Disassembling the display unit

10. Remove the display cover.



(1) Open the printer cover and remove Hook1 and Hook2.

(2) Remove Hook3 and Hook4.

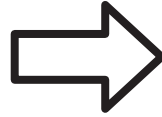
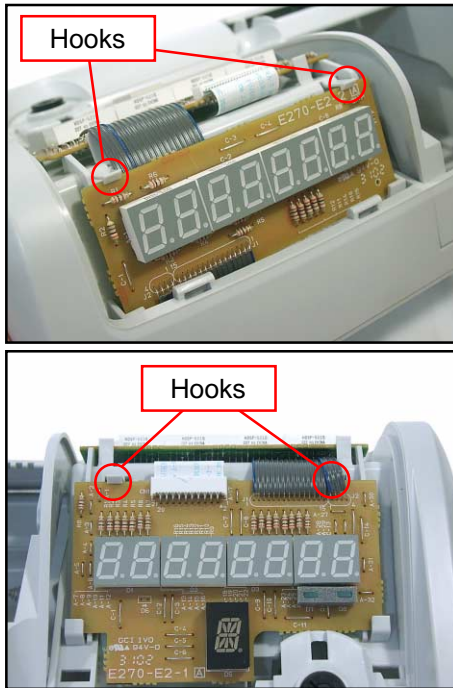


11. Remove the blind sheet.

* When reassembling, insert the blind sheet under the hooks.

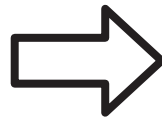
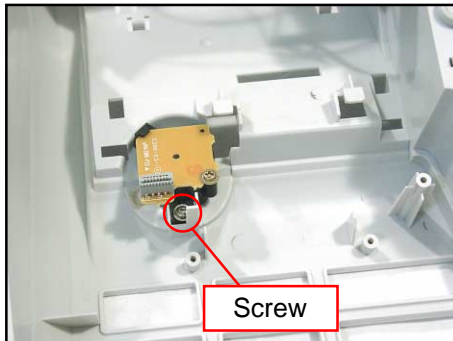


12. Remove the LCD board.



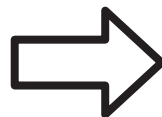
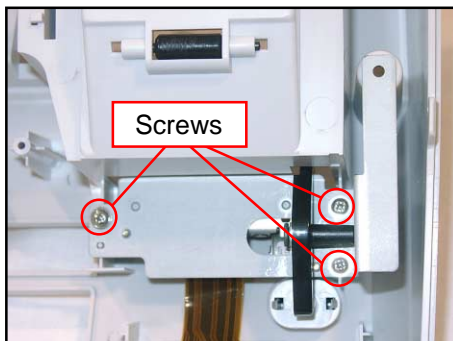
■ Removing the key unit

13. Removing one screw and then the key unit.



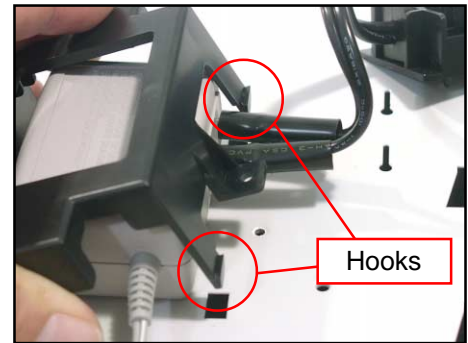
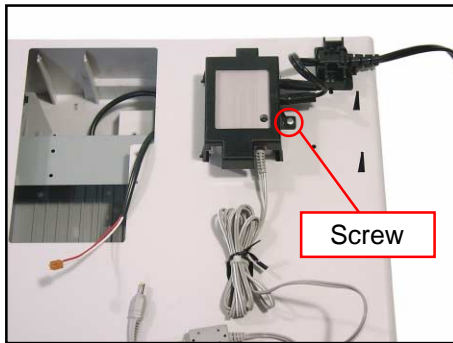
■ Removing the printer unit

14. Remove the three screws and then the printer unit.



■ Disassembling the drawer (DL-1329/DL-1841)

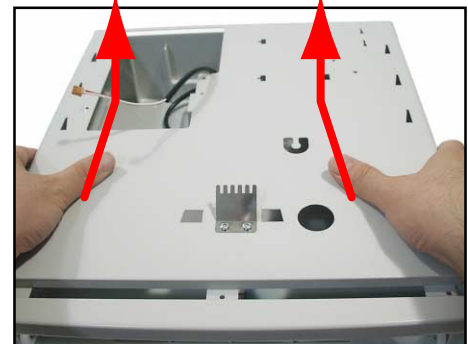
15. Remove one screw and then the power unit.



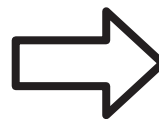
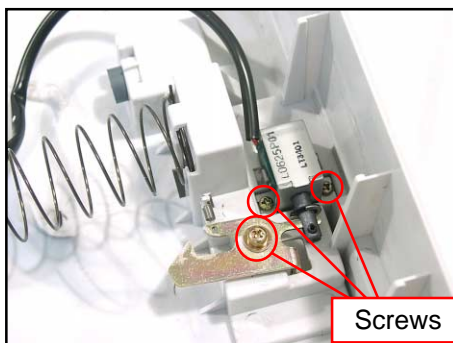
16. Pull the lever and remove the tray.



17. Remove the three screws and then the top plate.



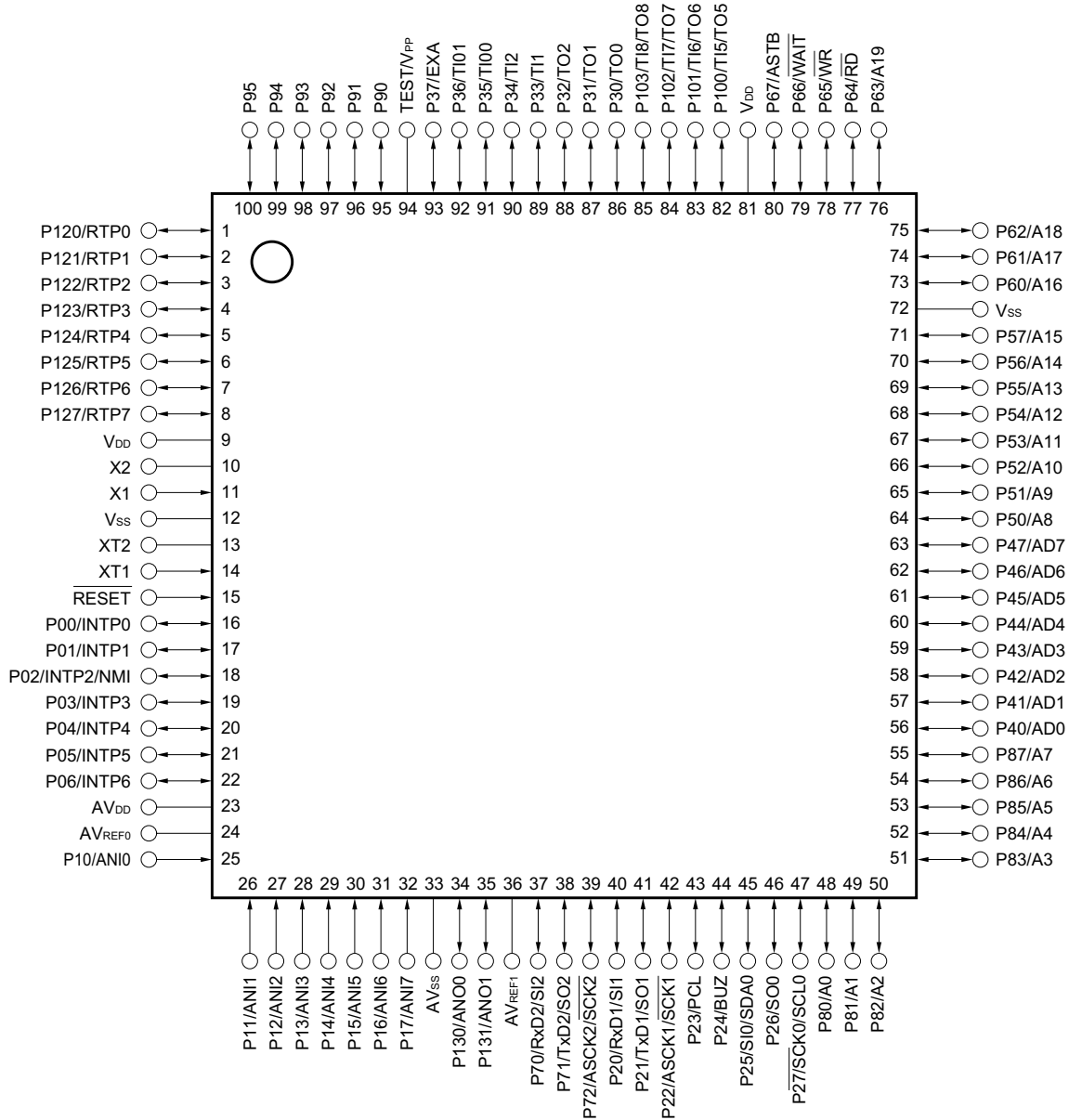
18. Remove the three screws and the solenoid.



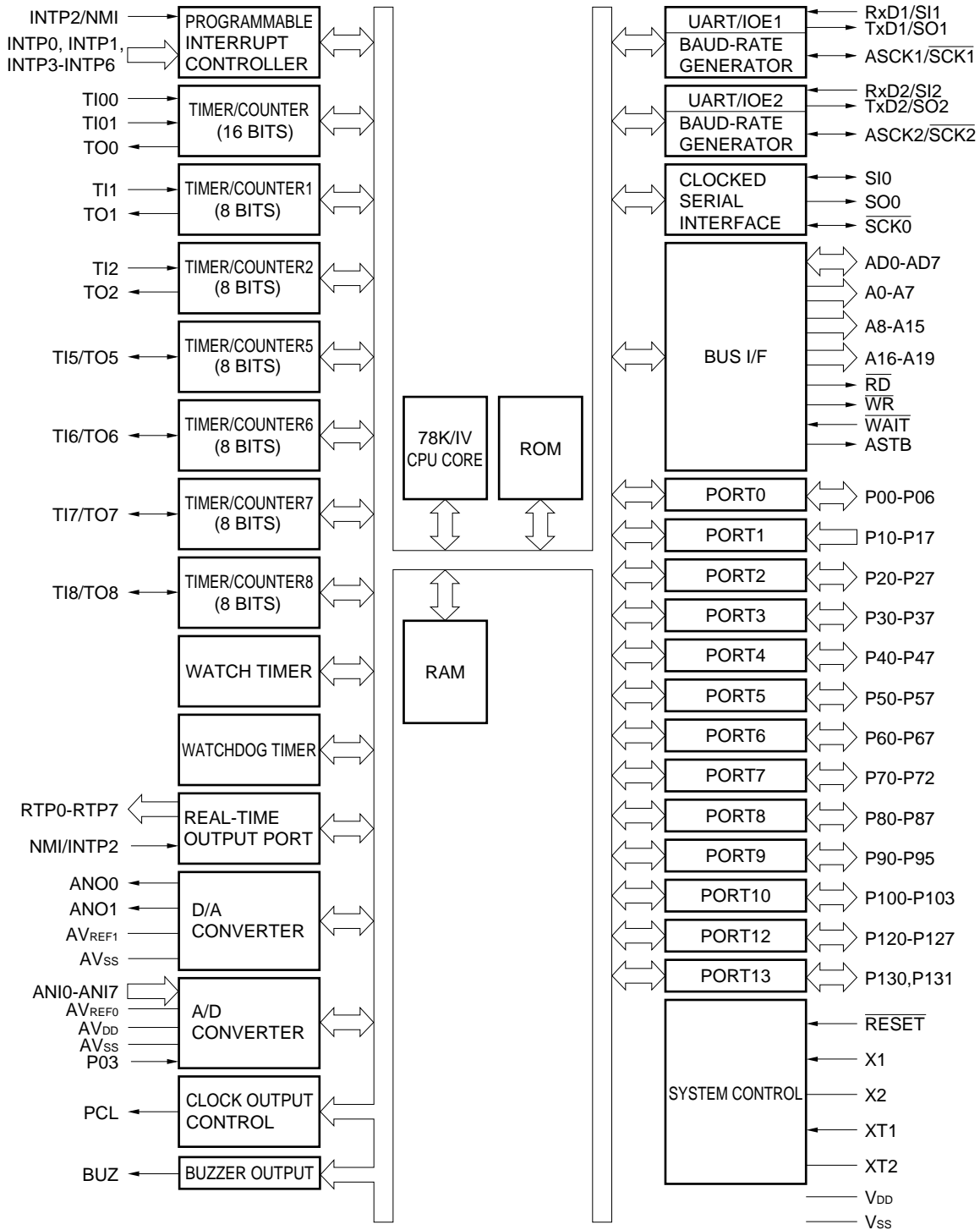
5. CIRCUIT EXPLANATION

5-1. CPU (IC12: uPD784215AGC8038EU)

5-1-1. Pin Assignment



5-1-2. Block Diagram

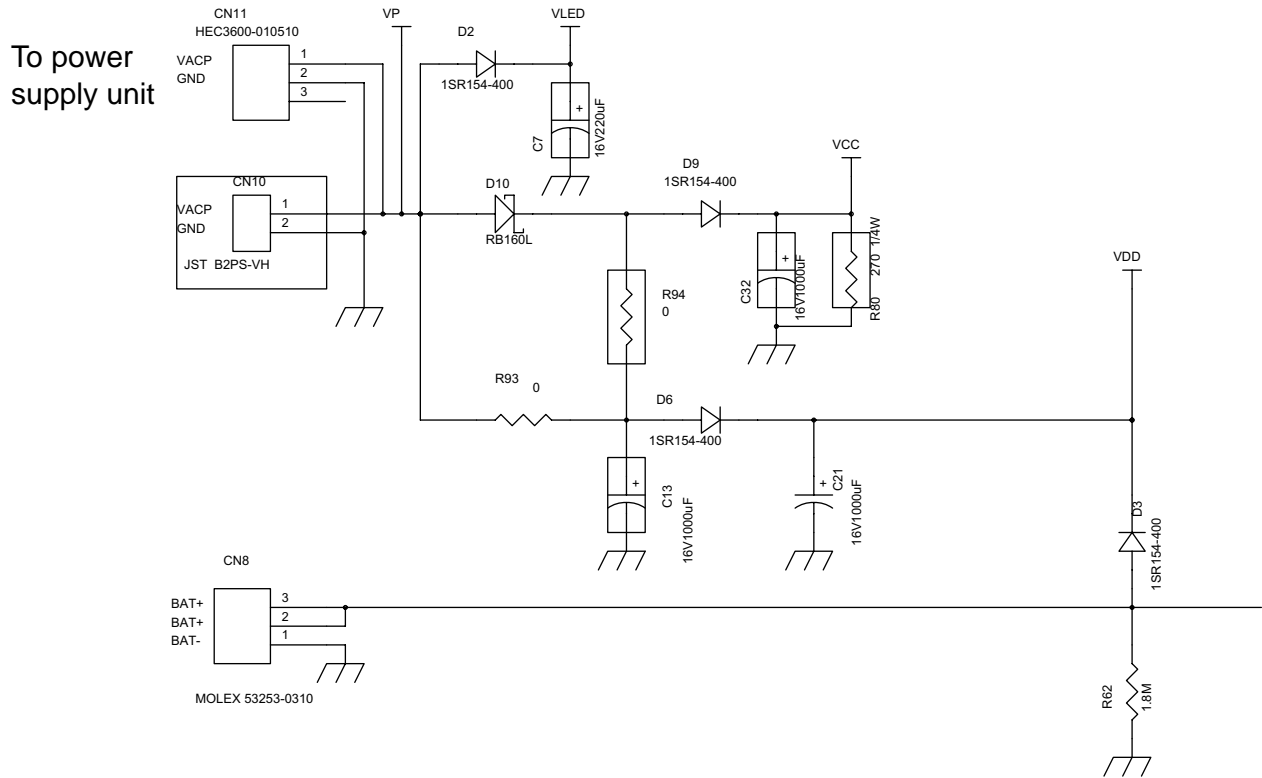


5-1-3. Pin Function

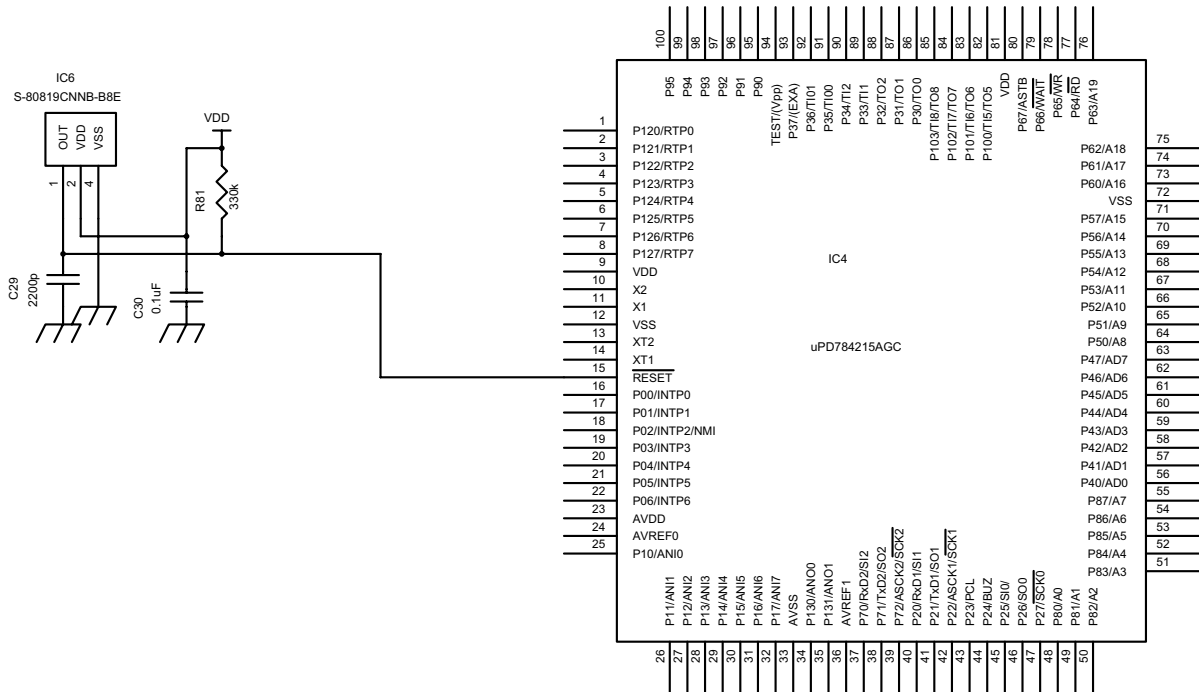
PIN NO.	PIN NAME	I/O	DESCRIPTION
1	P120/RTP0	IO	8 bit input/output PORT
2	P121/RTP1		
3	P122/RTP2		
4	P123/RTP3		
5	P124/RTP4		
6	P125/RTP5		
7	P126/RTP6		
8	P127/RTP7		
9	VDD	-	Power Supply
10	X2	-	Main system Clock
11	X1	I	
12	VSS	-	GND
13	XT2	-	Sub system Clock
14	XT1	I	
15	RESET	I	Reset
16	P00/INTP0	IO	7 bit input/output PORT
17	P01/INTP1		
18	P02/INTP2/NMI		
19	P03/INTP3		
20	P04/INTP4		
21	P05/INTP5		
22	P06/INTP6		
23	AVDD	-	A/D CONVERTER POWER SUPPLY
24	AVREF0	-	Application of Standard Voltage for A/D CONVERTER
25	P10/ANI0	I	8 bit input PORT
26	P11/ANI1		
27	P12/ANI2		
28	P13/ANI3		
29	P14/ANI4		
30	P15/ANI5		
31	P16/ANI6		
32	P17/ANI7		
33	AVSS		A/D CONVERTER & D/A CONVERTER GND
34	P130/ANO0	IO	2 bit input/output PORT
35	P131/ANO1		
36	AVREF1		Application of Standard Voltage for D/A CONVERTER
37	P70/RxD2/SI2	IO	3 bit input/output PORT
38	P71/TxD2/SO2		
39	P72/ASCK2/SCK2		
40	P20/RxD1/SI1	IO	8 bit input/output PORT
41	P21/TxD1/SO1		
42	P22/ASCK1/SCK1		
43	P23/PCL		
44	P24/BUZ		
45	P25/SI0/SDA0		
46	P26/SO0		
47	P27/SCK0/SCL0		
48	P80/A0	IO	8 bit input/output PORT
49	P81/A1		
50	P82/A2		

PIN NO.	PIN NAME	I/O	DESCRIPTION
51	P83/A3	IO	8 bit input/output PORT
52	P84/A4		
53	P85/A5		
54	P86/A6		
55	P87/A7		
56	P40/AD0		
57	P41/AD1		
58	P42/AD2		
59	P43/AD3		
60	P44/AD4		
61	P45/AD5		
62	P46/AD6		
63	P47/AD7		
64	P50/A8	IO	8 bit input/output PORT
65	P51/A9		
66	P52/A10		
67	P53/A11		
68	P54/A12		
69	P55/A13		
70	P56/A14		
71	P57/A15		
72	VSS	-	GND
73	P60/A16	IO	8 bit input/output PORT
74	P61/A17		
75	P62/A18		
76	P63/A19		
77	P64/RD		
78	P65/WR		
79	P66/WAIT		
80	P67/ASTB		
81	VDD	-	Power Supply
82	P100/TI5/TO5	IO	4 bit input/output PORT
83	P101/TI6/TO6		
84	P102/TI7/TO7		
85	P103/TI8/TO8		
86	P30/TO0	IO	8 bit input/output PORT
87	P31/TO1		
88	P32/TO2		
89	P33/TI1		
90	P34/TI2		
91	P35/TI00		
92	P36/TI01		
93	P37/EXA		
94	TEST/VPP	-	TEST pin
95	P90	IO	6 bit input/output PORT
96	P91		
97	P92		
98	P93		
99	P94		
100	P95		

5-2. Power circuit

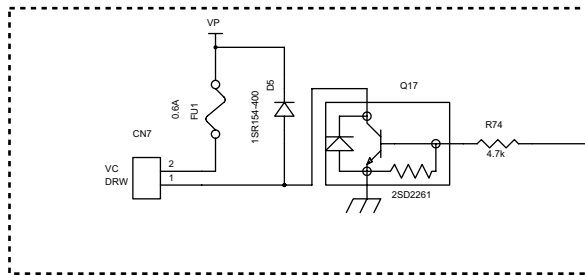
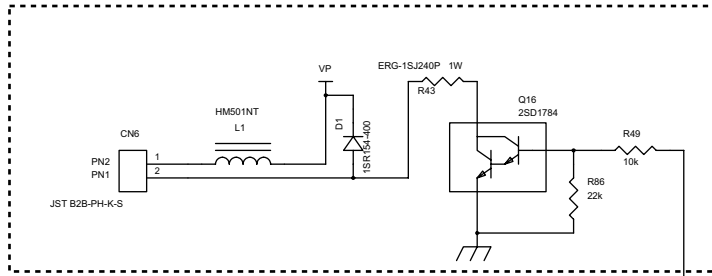


5-3. Reset circuit

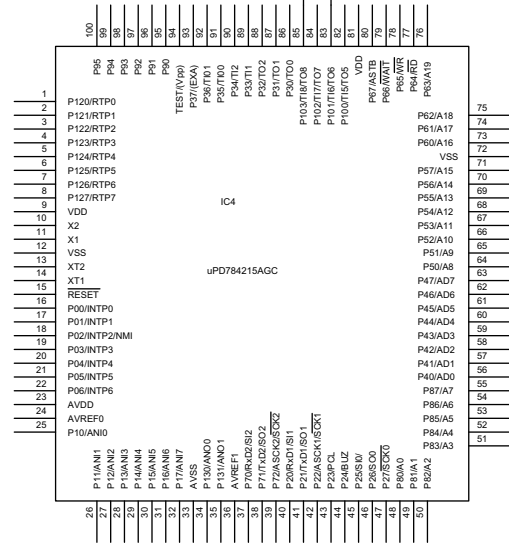


5-6. Winding motor circuit & Drawer circuit

Winding motor circuit



Drawer circuit



6. DIAGNOSTIC OPERATION

To start the diagnostic program

ECR enters the diagnostic mode by the following operation.

- ① Turn the mode key to PGM.
- ② Input "99990000" and #2 (SUB TOTAL).

Upon the above operation ECR prints the following and issues a receipt.

*** Note that the test mode will not boot if once a receipt has been issued in the REG/RF/X/Z mode.**

In this case, remove the battery and perform the above operation again.

<Header is printed>
 <When issuing a receipt, FEED>
 <Version is printed>
 <When issuing a receipt, FEED>

6-1. Content of the Test

- ① Displaying the Key Code Press any key other than the ten keys and clear key.
- ② Displaying the Switch Condition Press the clear key, or change the status of switches.
- ③ Printing and Display test One digit number + #2 (SUB TOTAL) key

6-2. Displaying the Key Code

Press any key other than the ten keys and clear key to display the hard key code as shown below.

(Display) 019

32 31 30

FEED	029	C
7	8	9
4	5	6
1	2	3
0	011	012

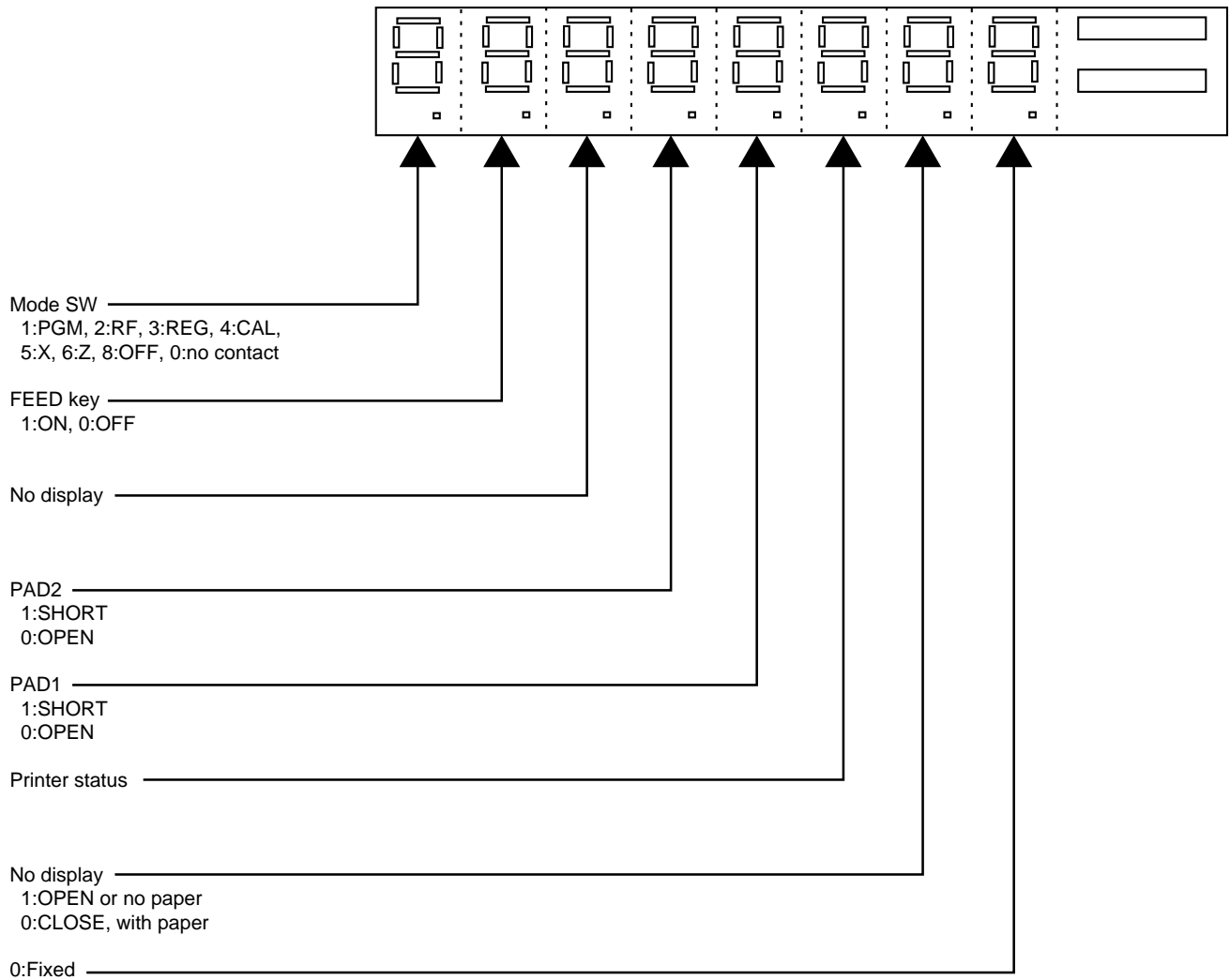
028	023
027	022
026	
025	
024	

021	017
020	016
019	015
018	014
013	013

6-3. Displaying the Switch Condition

Press the clear key, or change the status of switches to display the current conditions.

[DISPLAY]



6-4. Printing and Display test

Bulk test

Operation :

All lit in the display, time and date setting, drawer open, receipt issuing (only in the receipt mode)

- All lit

(display) :

↑ (transaction)

- Waits for key input (the test proceeds by the input of any key other than the clear key, ten keys and FEED key.)
- Time and date setting
Set the time and date at 23:59 on 31 December, 1994.
- Drawer open
- Test print
- Receipt issuing
(only in the receipt mode)
- Test display

(display) :

Switching the Receipt / Journal

Operation :

This test switches the printing between the receipt and the journal.

Continuous printing at a regular interval

Operation :

X:0 The following is printed 45 times a minute.

1 The following is printed 5 times, the drawer opens 5 times, and a receipt is issued 5 times a minute respectively.

- When X=0

```
0           1           2
123456789012345678901234
|
|BBBBBBBBBBBBBB      88.88|
|
```

- When X=1

```
0           1           2
123456789012345678901234
|
|<header is printed>
|BBBBBBBBBBBBBB      88.88| This line is printed 5 times.
|<receipt is issued>
|
```

Winder test

Operation :

The drive time of the winder motor can be changed.
Default is 50msec.

X:0 30 msec
:1 35 msec
:2 40 msec
:3 45 msec
:4 50 msec
:5 55 msec
:6 60 msec
:7 65 msec
:8 70 msec
:9 75 msec

Continuous printing

Operation :

The following is continuously printed.

```
          0          1          2
123456789012345678901234
|
| BBBBBBBBBBBB      X8888.88
|
```

X:0 = normal printing
X:1 = reduction printing
X:2 = double height size printing

Battery test

Operation :

This test displays the battery voltage value.
The battery voltage is displayed until a power down occurs.

display (display) BBB: battery voltage

Print test

Operation :

All the fonts are printed.

Time display test


Operation :

Time is displayed until the clear key is pressed or a power down occurs.

Ending the test mode

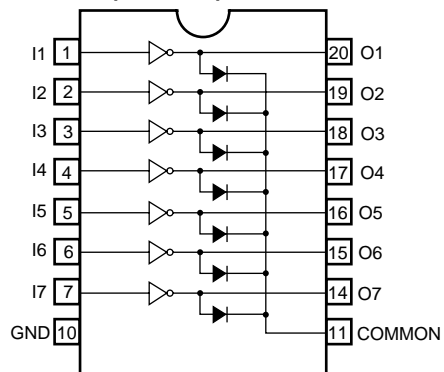
To leave the test mode, remove the battery (AUTO MAC).

7. TROUBLESHOOTING

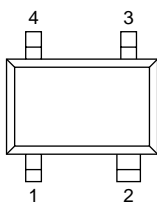
	Symptom/Problem	Most common causes	Solutions
1	E01 appears on the display.	Changing modes without completing transaction.	Return key to where it stops buzzing and press  .
2	When the printer does not print properly.		Check the platen arm/shut down and close it firmly.
3	No date or time on receipt. Paper is not advancing enough.	Printer is programmed as a journal.	Program printer to print receipts.
4	Key won't turn to Z, X, PGM and RF modes.	Using OP key.	Use the PGM key.
5	Drawer opens up after ringing up only one time.	Department is programmed as a single item dept.	Program the dept. as a normal dept.
6	Not clearing totals at end of day after taking report.	Using X mode to take out reports.	Use Z mode to take out reports.
7	Programming is lost whenever register is unplugged or there is a power outage.	Bad or no batteries.	Put in new batteries.
8	Register is inoperative. Can't get money out of drawer.	No power.	Pull lever underneath register at rear.

8. IC DATA

1. ULN2003AFW (IC1, IC2)

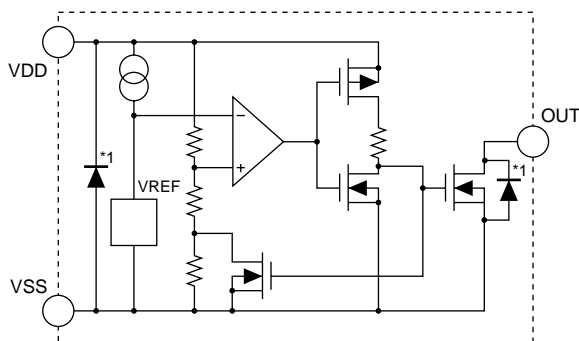


2. S-80819CNNB-B8E (IC6), S-80850CNNB-B9B (IC7)

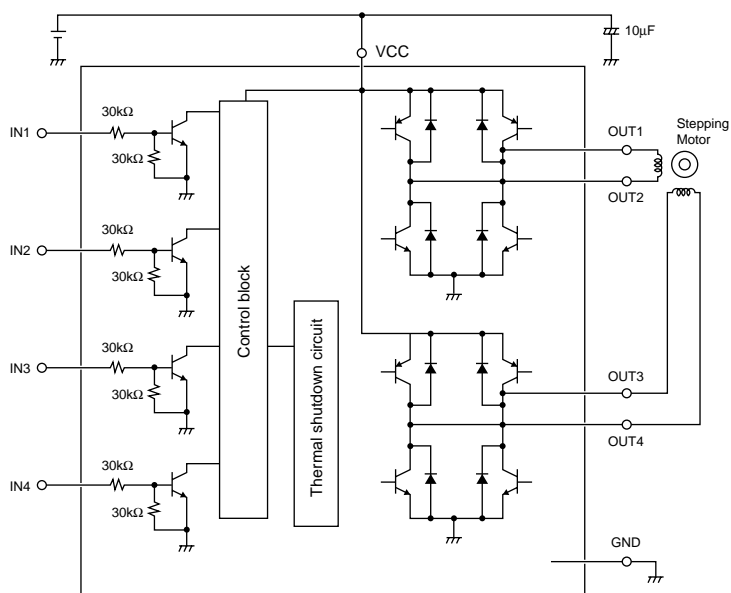
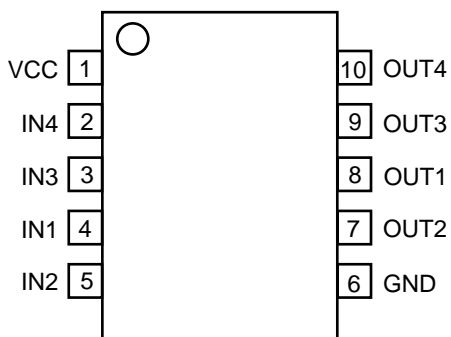


No.	Symbol	Description
1	OUT	Voltage detection output pin
2	VDD	Voltage input pin
3	NC*1	Non-connected
4	VSS	Ground pin

*1. NC pin is electrically open.
Connecting this pin to VDD or VSS is allowed.



3. LB1846M (IC8)



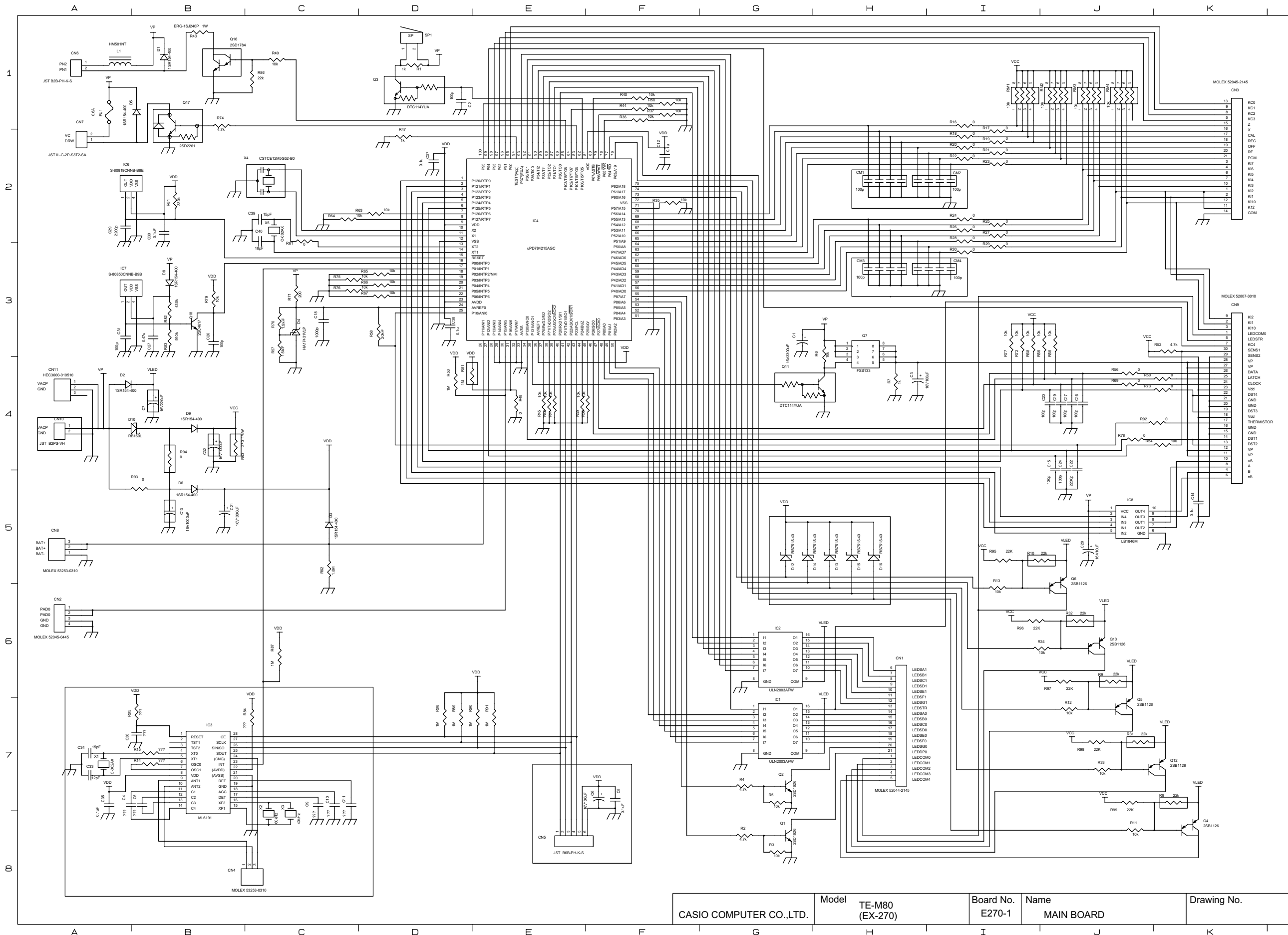
9. CIRCUIT DIAGRAM

MODEL : TE-M80

(EX-270)

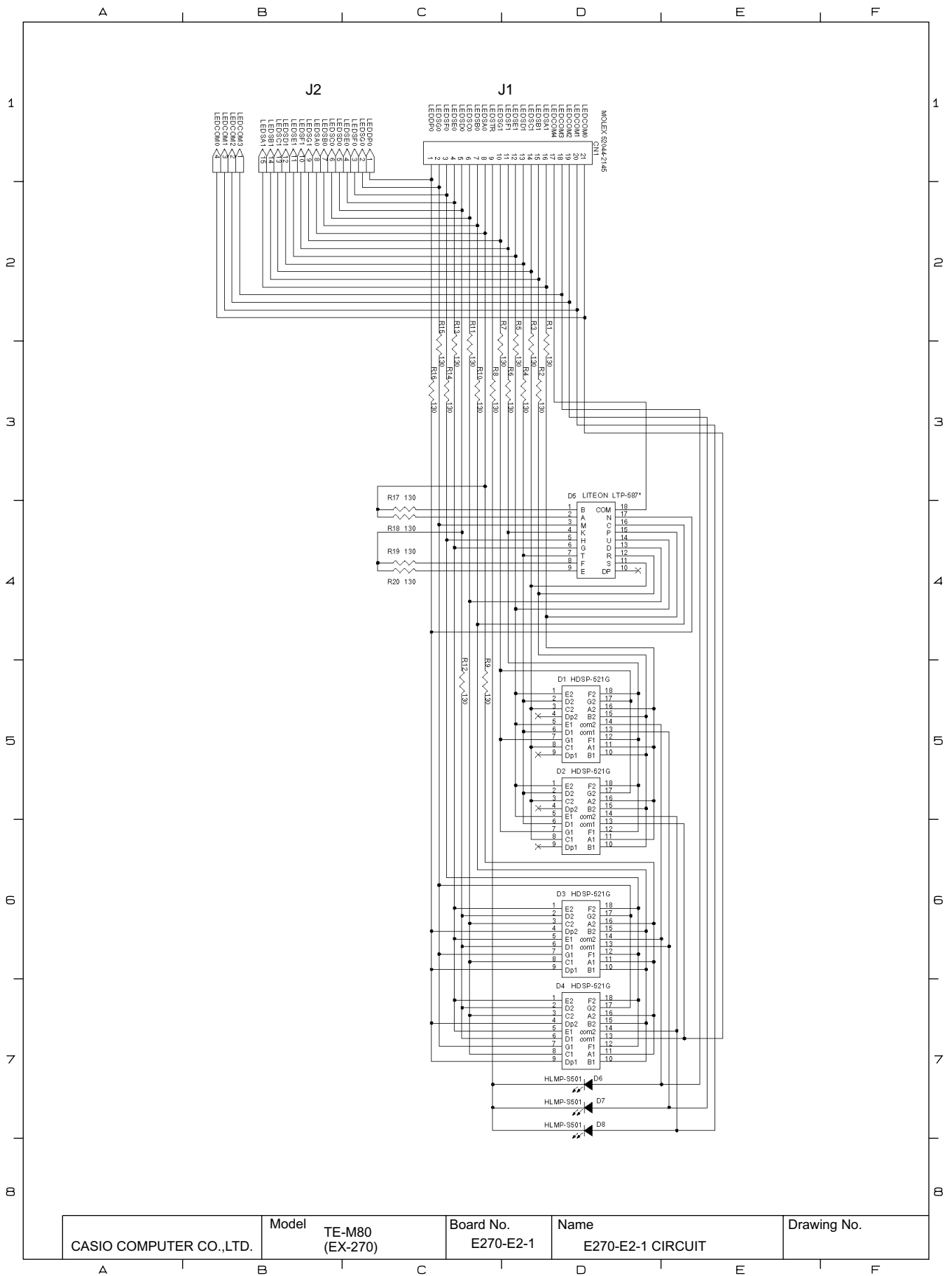
CONTENTS

1. MAIN PCB CIRCUIT	24
2. E270-E2-1 CIRCUIT	25
3. E270-E2-1 CIRCUIT	26
4. E270-PRINTER CIRCUIT	27

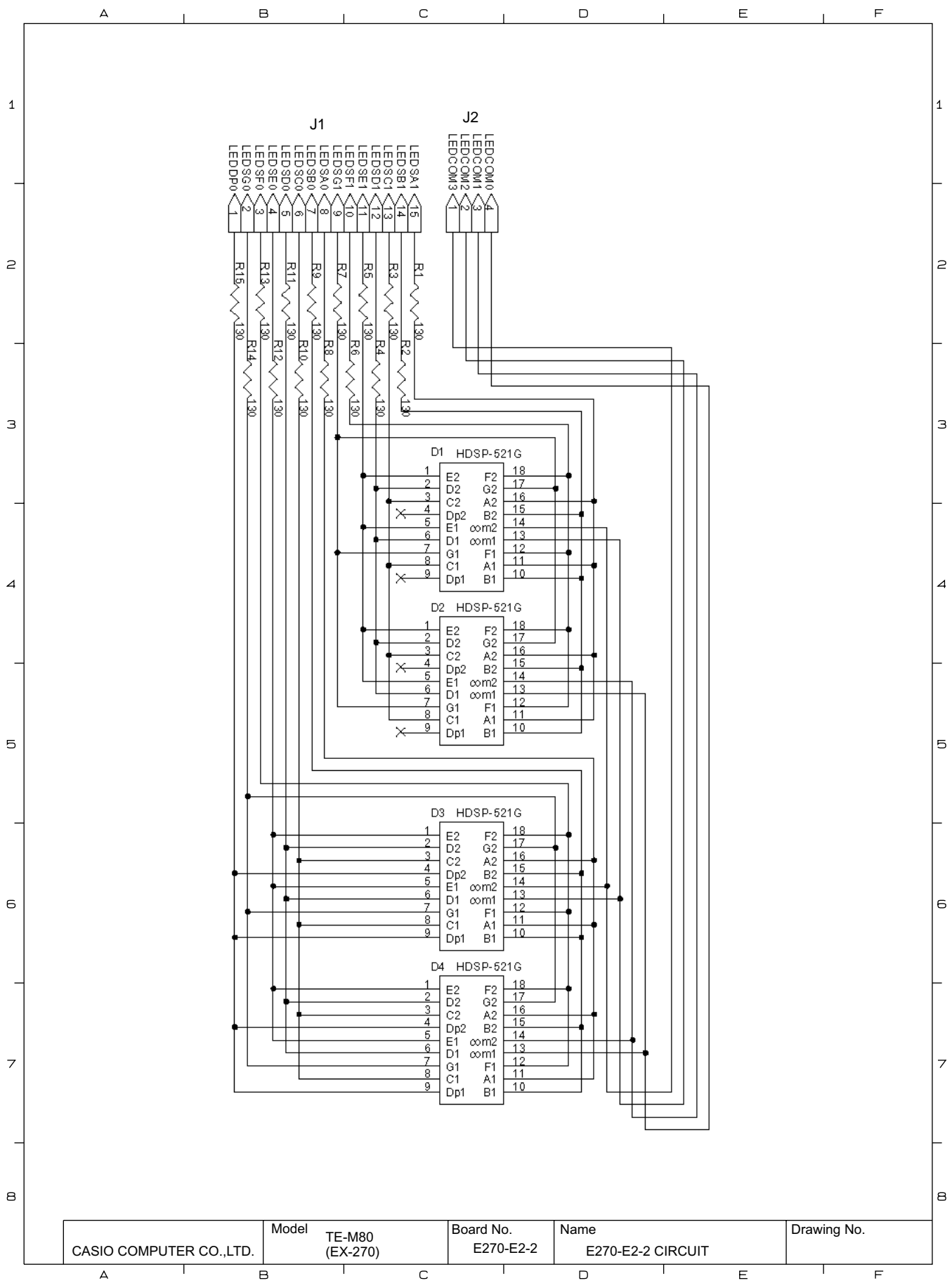


Model	Board No.	Name	Drawing No.
TE-M80 (EX-270)	E270-1	MAIN BOARD	

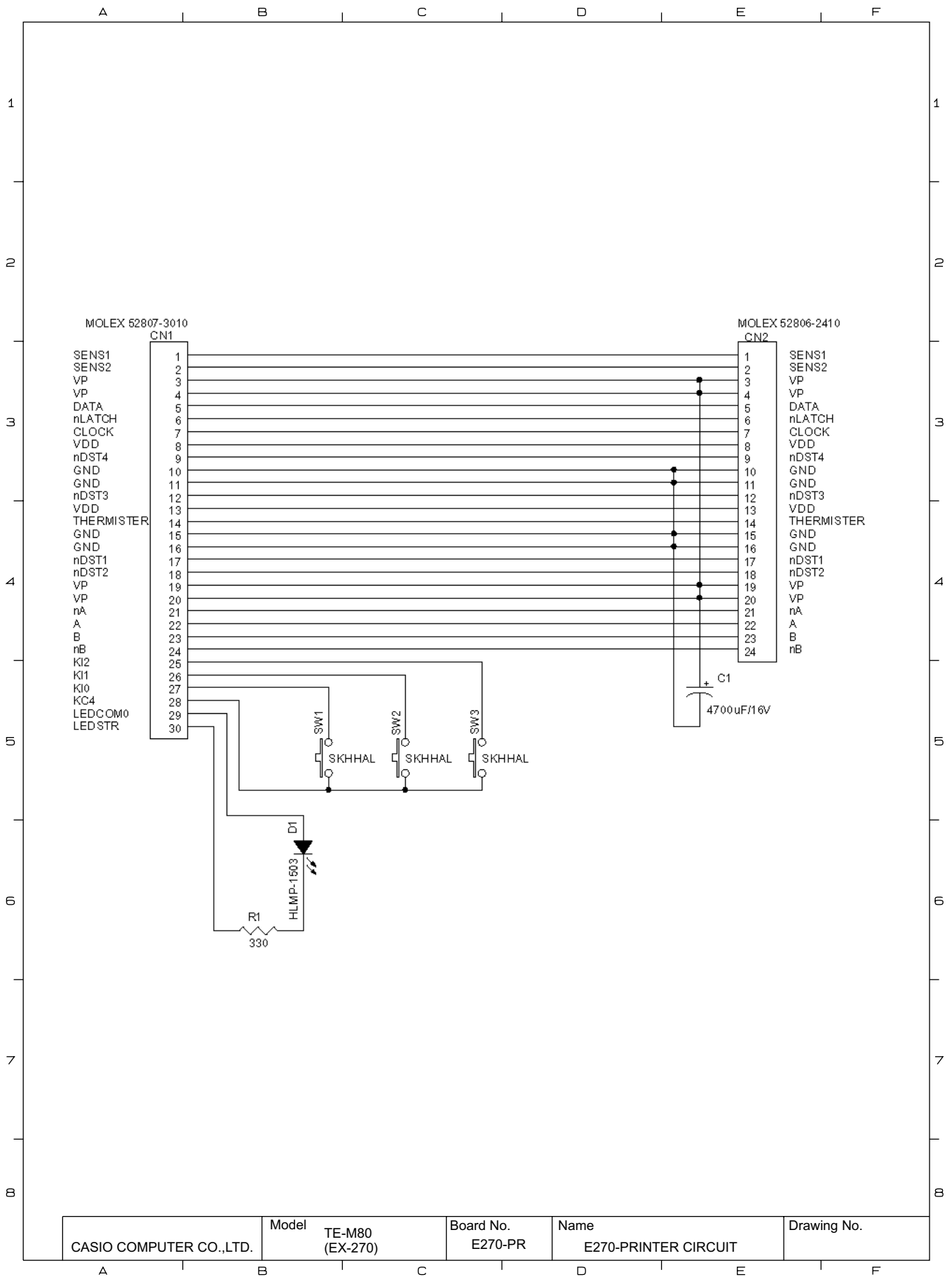
CASIO COMPUTER CO.,LTD.



CASIO COMPUTER CO.,LTD.	Model TE-M80 (EX-270)	Board No. E270-E2-1	Name E270-E2-1 CIRCUIT	Drawing No.
-------------------------	-----------------------------	------------------------	---------------------------	-------------



CASIO COMPUTER CO.,LTD.	Model TE-M80 (EX-270)	Board No. E270-E2-2	Name E270-E2-2 CIRCUIT	Drawing No.
-------------------------	-----------------------------	------------------------	---------------------------	-------------



10. PARTS LIST

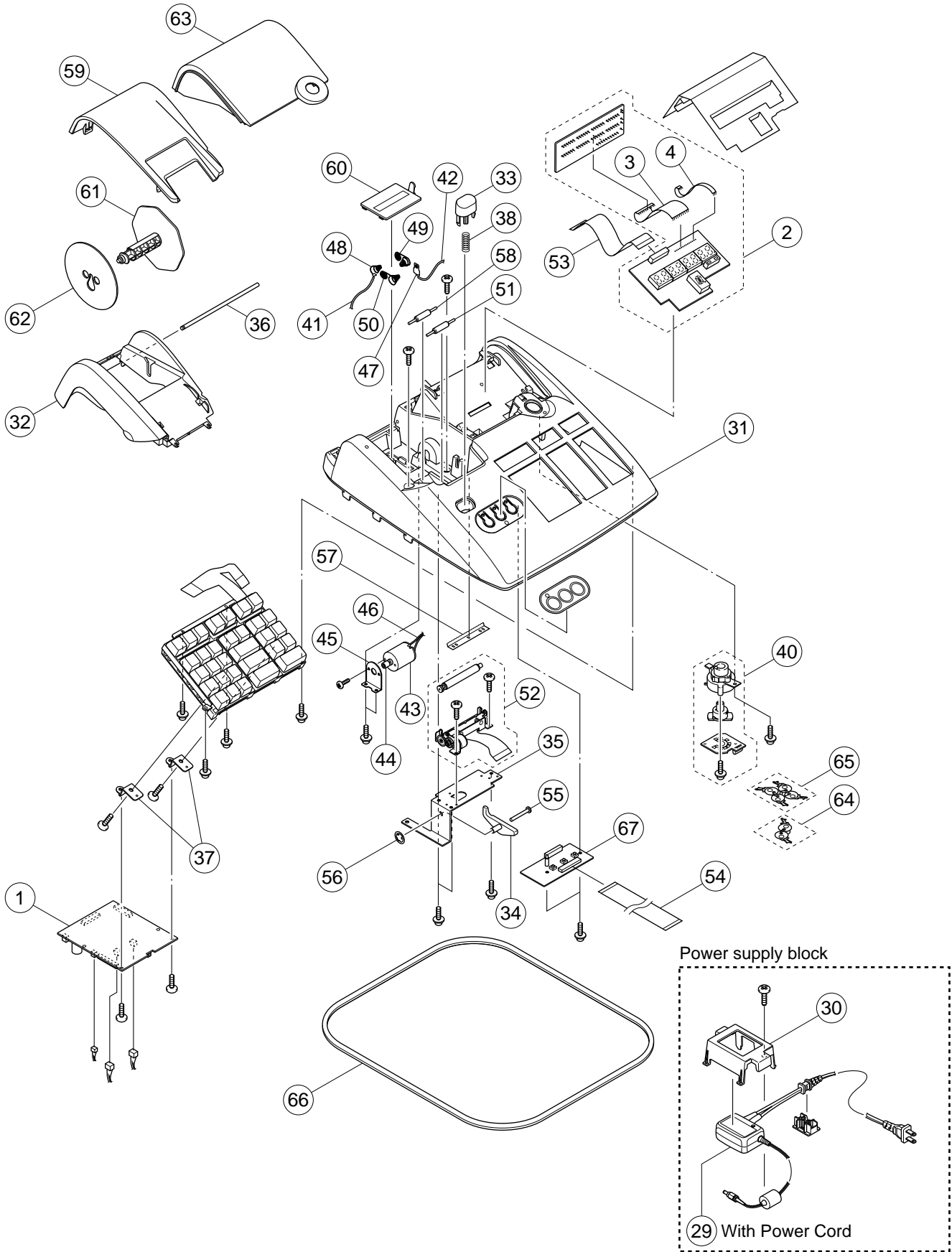
MODEL : TE-M80/PCR-T265/PCR-T275 (EX-270)

Explode view	29
TE-M80	
1. MAIN PCB BLOCK	31
2. MAIN DISPLAY & CUSTOMER DISPLAY BLOCK	31
3. BUTTON BLOCK	31
4. POWER SUPPLY BLOCK	32
5. UPPER CASE BLOCK	32
6. PRINTER PCB BLOCK.....	33
PCR-T265/PCR-T275	
1. MAIN PCB BLOCK	34
2. MAIN DISPLAY & CUSTOMER DISPLAY BLOCK	34
3. BUTTON BLOCK	34
4. POWER SUPPLY BLOCK	35
5. UPPER CASE BLOCK	35
6. PRINTER PCB BLOCK.....	36
7. DRAWER (DL-1329)	37
8. DRAWER (DL-1841)	39
9. DRAWER (DL-2794)	41
10. DRAWER (DL-2796)	43

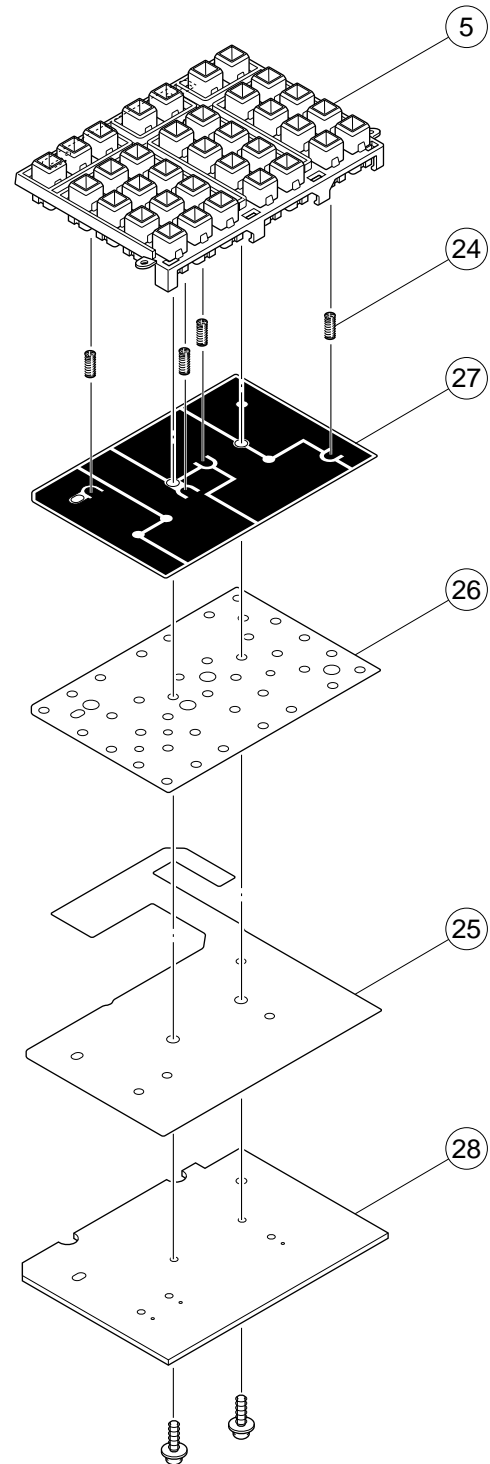
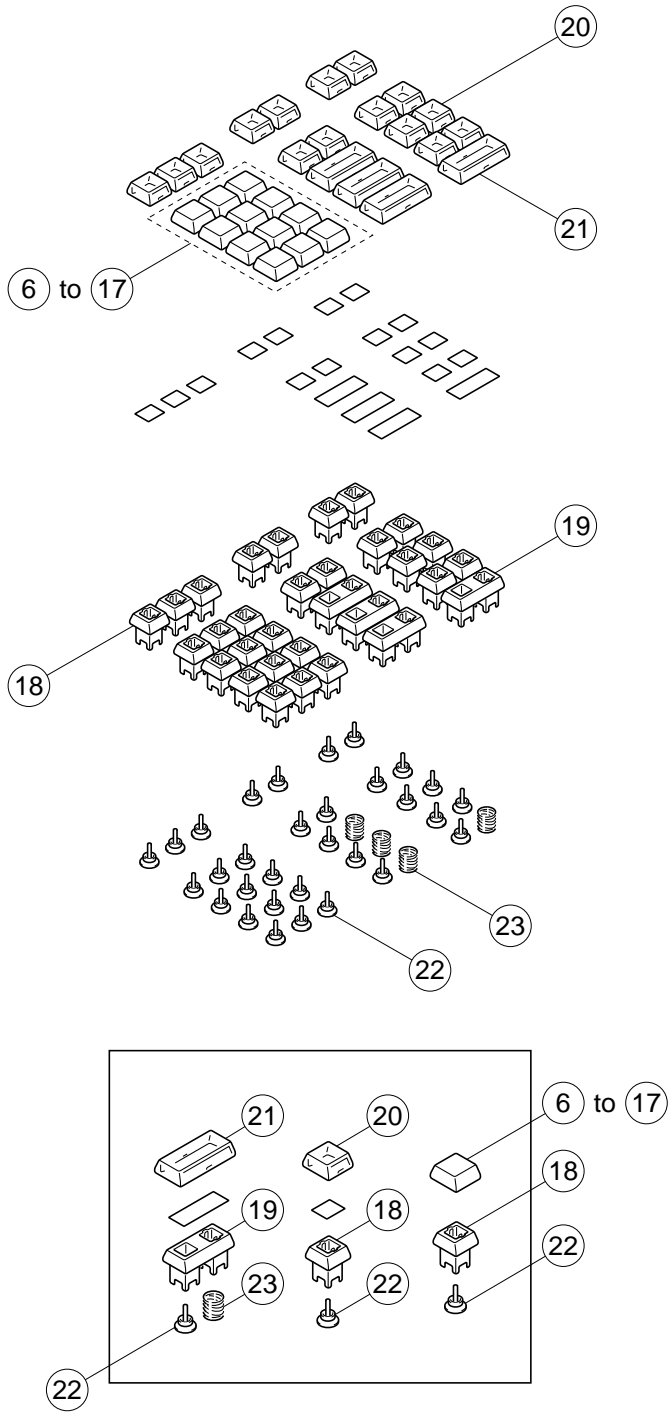
NOTES :

1. Price and specifications are subject to change without prior notice.
2. As for spare parts order and supply, refer to the "GUIDEBOOK for Spare Parts Supply", published separately.
3. The numbers in item column correspond to the same numbers in drawing.
4. CASIO does not supply the spare parts without parts code.
5. Remarks
 - Q'ty : Quantity used per unit
 - RANK: A = Essential
 - B = Stock recommended
 - C = Less recommended
 - X = No stock recommended

UPPER CASE (TE-M80/PCR-T265/PCR-T275)



KEYBOARD (TE-M80/PCR-T265/PCR-T275)



**PARTS PRICE LIST
TE-M80**

N	Item	Code No.	Parts Name	Specification	Q'ty					Other Countries		Price Code	R
					Europe	UK	Germany	Australia	Plug Type				
									UK	USA			
1. MAIN PCB BLOCK													
N	1	10131708	PCB ASSY/E270-1	RJE500763*001V01	1			1	1	1	1	DB	A
N	1	10140512	PCB ASSY/E270-1	RJE500763*003V01		1						AD	B
N	1	10140513	PCB ASSY/E270-1	RJE500763*004V01				1				DB	A
N	IC4	10137724	LSI	UPD784215AGC2388EU	1			1	1	1	1	CG	A
N	IC4	10136098	LSI	UPD784215AGC2368EU		1						BL	A
N	IC6	10136173	IC/RESET	S-80819CNNB-B8E	1	1		1	1	1	1	AD	B
N	IC8	10136174	IC	LB1846M	1	1		1	1	1	1	AS	B
N	IC1,2	10132897	IC	ULN2003AFW	2	2		2	2	2	2	AF	B
N	Q7	10082597	TRANSISTOR	FSS133-TL	1	1		1	1	1	1	AN	C
N	Q3,11	79113038	TRANSISTOR	DTC114YUA-T106	2	2		2	2	2	2	AA	C
N	Q18	22501601	TRANSISTOR	2SC4617TLQ	1	1		1	1	1	1	AA	C
N	Q17	10079246	TRANSISTOR	2SD2261-TD	1	1		1	1	1	1	AF	B
N	Q1,2	10076311	TRANSISTOR	2SD1626-TD	2	2		2	2	2	2	AC	C
N	D1-3,5,6,9	23902058	DIODE	1SR154-400TE25	6	6		6	6	6	6	AB	C
N	D10	10136175	DIODE	RB160L-40T-25	1	1		1	1	1	1	AC	C
N	D4	10905733	DIODE	HA17431VLP-EL	1	1		1	1	1	1	AC	C
N	C3		CAPACITOR/CHIP	UWT1C101MCR1GB	1	1		1	1	1	1		X
N	C28		CAPACITOR/CHIP	UWT1C100MCR1GB	1	1		1	1	1	1		X
N	C39		CAPACITOR/CHIP	MCH185A150J	1	1		1	1	1	1		X
N	C22,29		CAPACITOR/CHIP	MCH185CN222K	2	2		2	2	2	2		X
N	C27,30		CAPACITOR/CHIP	GRM21BB11H104KA11L	2	2		2	2	2	2		X
N	C2,15-17,19,20,24,26,31		CAPACITOR/CHIP	MCH185A101J	9	9		9	9	9	9		X
N	C12,14,37,38		CAPACITOR/CHIP	MCH182FN104Z	4	4		4	4	4	4		X
N	C18		CAPACITOR/CHIP	MCH182CN102K	1	1		1	1	1	1		X
N	RM1-4		RESISTOR/CHIP NETWORK	MNR14E0ABJ103	4	4		4	4	4	4		X
N	R58		RESISTOR/CHIP	MCR03EZPFX2002	1	1		1	1	1	1		X
N	R3,5,6,11-13,33-42,44,45,49,50,55,59,63-68,72,75-77,79		RESISTOR/CHIP	MCR03EZHJ103	33	33		33	33	33	33		X
N	R2,4,52,74		RESISTOR/CHIP	MCR03EZHJ472	4	4		4	4	4	4		X
N	R16-30,48,54,56,60,61,69,73,78		RESISTOR/CHIP	MCR03EZHJ000	22	22		23	22	22	22		X
N	R1,7,47		RESISTOR/CHIP	MCR03EZHJ102	3	3		3	3	3	3		X
N	R81		RESISTOR/CHIP	MCR03EZHJ334	1	1		1	1	1	1		X
N	R71		RESISTOR/CHIP	MCR03EZHJ201	1	1		1	1	1	1		X
N	R86,95-99		RESISTOR/CHIP	MCR03EZHJ223	6	6		6	6	6	6		X
N	R62		RESISTOR/CHIP	MCR03EZHJ185	1	1		1	1	1	1		X
N	X4	10136159	CRYSTAL/CERAMIC	CSTCE12M5G52-B0	1	1		1	1	1	1	AI	B
N	X5	10094206	CRYSTAL	C-002RX-8.3/10	1	1		1	1	1	1	AF	B
N	FU1	30007777	FUSE	230.600	1	1		1	1	1	1	AE	A
N	L1		INDUCTOR/CHIP	FBMH3216HM501NT	1	1		1	1	1	1		X
N	SP1	10079249	BUZZER	PKM22EPT-2001-B0	1	1		1	1	1	1	AG	C
N	CN11	10136160	CONNECTOR	HEC3600-010510	1	1		1	1	1	1	AH	C
N	CN8	35007122	CONNECTOR	53253-0310	1	1		1	1	1	1	AA	C
N	CN7	10136161	CONNECTOR	IL-G-2P-S3T2-SA	1	1		1	1	1	1	AA	C
N	CN6	35016244	CONNECTOR	B2B-PH-K-S	1	1		1	1	1	1	AA	C
N	CN9	10136125	CONNECTOR	52807-3010	1	1		1	1	1	1	AE	C
N	CN1	10136133	CONNECTOR	52044-2145	1	1		1	1	1	1	AC	C
N	Q16	10136163	TRANSISTOR	2SD1784	1	1		1	1	1	1	AE	B
N	R57,70		RESISTOR/CHIP	RC1608-152-F-T	2	2		2	2	2	2		X
N	R51,53,82,87-91		RESISTOR/CHIP	MCR03EZHJ105	8	7		6	8	8	8		X
N	CN3	62214761	CONNECTOR	52045-2145	1	1		1	1	1	1	AC	C
N	C1		CAPACITOR/CHIP	UVR1C332MHA	1	1		1	1	1	1		X
N	C21		CAPACITOR/CHIP	UVR1C102MPA	1	1		1	1	1	1		X
N	Q4-6,12,13	10136167	TRANSISTOR	2SB1126	5	5		5	5	5	5	AH	C
N	R93		RESISTOR/CHIP	MCR10EZHJ000	1	1		1	1	1	1		X
N	C40		CAPACITOR/CHIP	MCH185A180J	1	1		1	1	1	1		X
N	R43	10140511	RESISTOR/METAL OXIDE	ERG-1SJ120P	1	1		1	1	1	1	AA	C
N	R92		RESISTOR/CHIP	MCR03EZHJ101	1	1		1	1	1	1		X
N	IC7	10095125	IC/RESET	S-80845CNNB-B86-T2	1	1		1	1	1	1	AD	B
2. MAIN DISPLAY & CUSTOMER DISPLAY BLOCK													
N	2	10131711	PCB ASSY/E270-E2-1	RJE500765*001V01	1	1		1	1	1	1	CM	A
N	D1-4(Main)&D1-4(Rear)	10072597	LED/7SEG	HDSP-521G	8	8		8	8	8	8	AN	B
N	D5	10136131	LED/16SEG	PSA05-12GWA	1	1		1	1	1	1	AU	B
N	D7,8	10136132	LED	HLMP-S501	2	2		2	2	2	2	AC	B
N	CN1	10136133	CONNECTOR	52044-2145	1	1		1	1	1	1	AC	C
N	3	10136135	CABLE/PARALLEL	RJE500808-001	1	1		1	1	1	1	AC	C
N	4	10080400	HOLDER/LED	RJE500001-001	1	1		1	1	1	1	AA	C
N	4	10136136	CABLE/PARALLEL	RJE500808-002	1	1		1	1	1	1	AA	C
N	R1-7,10-20(Main)	10140508	RESISTOR/CARBON	CF1/4CT52R131J	33	33		33	33	33	33	AA	C
N	R1-15(Rear)												
N	R8,9	10140509	RESISTOR/CARBON	CF1/4CT52R750J	2	2		2	2	2	2	AA	C
3. BUTTON BLOCK													
N	5	10127004	FLAME/KB E270	RJE500678-001V01	1	1		1	1	1	1	AH	C
N	6	10127005	BUTTON/S E270-1	E341252-023V01	1	1		1	1	1	1	AA	C

N	Item	Code No.	Parts Name	Specification	Q'ty						Price Code	R	
					Europe	UK	Germany	Australia	Other Countries				
									UK	USA			
N	7	10127006	BUTTON/S E270-2	E341252-024V01	1	1	1	1	1	1	AA	C	
N	8	10127007	BUTTON/S E270-3	E341252-025V01	1	1	1	1	1	1	AA	C	
N	9	10127008	BUTTON/S E270-4	E341252-026V01	1	1	1	1	1	1	AA	C	
N	10	10127009	BUTTON/S E270	E341253-003V01	1	1	1	1	1	1	AA	C	
N	11	10127010	BUTTON/S E270-6	E341252-027V01	1	1	1	1	1	1	AA	C	
N	12	10127011	BUTTON/S E270-7	E341252-028V01	1	1	1	1	1	1	AA	C	
N	13	10127012	BUTTON/S E270-8	E341252-029V01	1	1	1	1	1	1	AA	C	
N	14	10127013	BUTTON/S E270-9	E341252-030V01	1	1	1	1	1	1	AA	C	
N	15	10072621	BUTTON/S E270-0	E341252-9	1	1	1	1	1	1	AA	C	
N	16	10127014	BUTTON/S E270-	E341252-031V01	1	1	1	1	1	1	AA	C	
N	17	10127015	BUTTON/S E270-00	E341252-032V01	1	1	1	1	1	1	AA	C	
N	18	10072609	KEYTOP/S E272	E341250-1	25	25	25	25	25	25	AA	C	
N	19	10110556	KEYTOP/L E266	RJE500369-004V01	5	5	5	5	5	5	AA	C	
N	20	10072610	CAP/S E272	E341251-1	13	13	13	13	13	13	AA	C	
N	21	10110557	CAP/L E227	RJE500370-001V01	5	5	5	5	5	5	AA	C	
N	22	62453530	RUBBER/CONTACT E240	E411877-1	30	30	30	30	30	30	AA	C	
N	23	10097045	SPRING/PRESS A-E272	E441298-001V02	5	5	5	5	5	5	AA	C	
N	24	10097046	SPRING/PRESS B-E272	E441298-002V02	4	4	4	4	4	4	AA	C	
N	25	10127016	FPC/E270	RJE500681-001V01	1	1	1	1	1	1	AH	C	
N	26	10127017	SPACER/E270	RJE500680-001V01	1	1	1	1	1	1	AH	C	
N	27	10127018	SHEET/COMMON E270	RJE500679-001V01	1	1	1	1	1	1	AH	C	
N	28	10127019	CHASSIS/KB E270	RJE500682-001V01	1	1	1	1	1	1	AE	C	
			SCREW	3X8 ZMC-3	2	2	2	2	2	2		X	
	FEED		PLATE/S 1E270	RJE500737-001	1	1	1	1	1	1		X	
	C		PLATE/S 2E270	RJE500737-002	1	1	1	1	1	1		X	
	-/ERR.CORR		PLATE/S 4E270	RJE500737-004	1	1	1	1	1	1		X	
	CH		PLATE/S 10E270	RJE500737-010	1	1	1	1	1	1		X	
	+/4 9 14		PLATE/S 14E270	RJE500737-014	1	1	1	1	1	1		X	
	5 10 15		PLATE/S 15E270	RJE500737-015	1	1	1	1	1	1		X	
	+/1 6 11		PLATE/L 1E270	RJE500738-001	1	1	1	1	1	1		X	
	-/2 7 12		PLATE/L 2E270	RJE500738-002	1	1	1	1	1	1		X	
	*/3 8 13		PLATE/L 3E270	RJE500738-003	1	1	1	1	1	1		X	
	CA/AMT TEND		PLATE/L2 1E270	RJE500816-001	1	1	1	1	1	1		X	
	MR/RC		PLATE/S 16E270	RJE500737-016	1	1	1	1	1	1		X	
	PD		PLATE/S 17E270	RJE500737-017	1	1	1	1	1	1		X	
	%		PLATE/S 18E270	RJE500737-018	1	1	1	1	1	1		X	
	#/NS		PLATE/S 19E270	RJE500737-019	1	1	1	1	1	1		X	
	DEPT/SHIFT		PLATE/S 20E270	RJE500737-020	1	1	1	1	1	1		X	
	X/DATE TIME		PLATE/S2 2E270	RJE500740-002	1	1	1	1	1	1		X	
	CHK		PLATE/S 3E270	RJE500737-003	1	1	1	1	1	1		X	
	SUB TOTAL		PLATE/L 5E270	RJE500738-005	1	1	1	1	1	1		X	
4. POWER SUPPLY BLOCK													
N	29	10126965	POWER SUPPLY ASSY	RJE500746*002V01	1		1				DG	A	
N		10126966	POWER SUPPLY ASSY	RJE500746*003V01		1				1	DH	A	
N	29	10126967	POWER SUPPLY ASSY	RJE500746*004V01						1	DG	A	
N	29	10126968	POWER SUPPLY ASSY	RJE500746*005V01				1			DG	A	
N		10140677	CORD/POWER	AR1CSEX270-US							1	AP	C
N		10140679	CORD/POWER	AR1CSEX270-EU	1		1				1	AS	C
N		10140680	CORD/POWER	AR1CSEX270-UK		1				1	1	BG	C
N		10140682	CORD/POWER	AR1CSEX270-SAA				1			1	AY	C
N			MOUNT/POWER CORD E270	RJE500722-001V02	1	1	1	1	1	1	1	X	
N	30	10142495	HOLDER/PS E270	RJE500777-001V02	1	1	1	1	1	1	1	AB	X
			SCREW	S-WLST-3X8ZC	3	3	3	3	3	3	3	X	
			TIE/INSULOCK	T-18S	2	2	2	2	2	2	2	X	
5. UPPER CASE BLOCK													
N	31	10142429	CASE/UPPER E270	RJE500677-001V02	1	1	1	1	1	1	1	AY	C
N	32	10143167	COVER/PRINTER E270	RJE500716-001V03	1	1	1	1	1	1	1	AJ	C
N	33	10126995	BUTTON /EJECT	RJE500718-001V01	1	1	1	1	1	1	1	AA	C
N	34	10142427	ARM-EJECT	RJE500719-001V02	1	1	1	1	1	1	1	AA	C
N	35	10126997	MOUNT/PRINTER E270	RJE500724-001V01	1	1	1	1	1	1	1	AD	C
N	36	10126998	SHAFT/E270	RJE500725-001V01	1	1	1	1	1	1	1	AB	C
N	37	10126999	MOUNT/PCB E270	RJE500728-001V01	2	2	2	2	2	2	2	AA	C
N	38	10127000	SPRING/PRESS E270	RJE500729-001V01	1	1	1	1	1	1	1	AA	C
N	39	10127001	PLATE/SW E270	RJE500741-001V01	1	1	1	1	1	1	1	AF	C
	40	10072504	MODE KEY SW ASSY	E341249*1	1	1	1	1	1	1	1	AT	A
	41	10072509	WIRE ASSY	E441293*1	1	1	1	1	1	1	1	AA	C
	42	10072506	CONNECTOR ASSY	E441294*1	1	1	1	1	1	1	1	AA	C
	43	32003672	MOTOR	MXN-13FB12F	1	1	1	1	1	1	1	AV	A
	44	62481102	RUBBER/WINDER	E440641-1	1	1	1	1	1	1	1	AB	A
	45	10078863	MOUNT/WIND MOTOR E272	E441355-1	1	1	1	1	1	1	1	AA	C
			SCREW	3X4 ZMC-3	1	1	1	1	1	1	1	X	
N	46	10135032	CONNECTOR ASSY/MOTOR	E441296*002V01	1	1	1	1	1	1	1	AB	C
	47	63224499	SPRING/A-G55	A42606-1	1	1	1	1	1	1	1	AA	C
	48	60006091	SPRING/G67	A43656-1	1	1	1	1	1	1	1	AA	C
	49	60010862	SPRING/B-1G513	P408-1	1	1	1	1	1	1	1	AB	C
	50	60010871	SPRING/B-2G513	P409-1	1	1	1	1	1	1	1	AA	C
N	51	10142488	ROLLER/PR E270	RJE500850-001V01	1	1	1	1	1	1	1	AK	C
N	52	10125419	THERMAL PRINTER	LTPZ225A-C192	1	1	1	1	1	1	1	CB	A
N	53	10131698	FFC JOINER/A-E270	E441342-004V01	1	1	1	1	1	1	1	AD	C
N	54	10131695	FFC JOINER/B-E270	RJE500785-001V01	1	1	1	1	1	1	1	AG	C

N	Item	Code No.	Parts Name	Specification	Q'ty						Price Code	R	
					Europe	UK	Germany	Australia	Other Countries				
									UK	USA			
N		55	10133277	RIVETS/COLD HEADED	4X28	1	1	1	1	1	1	AA	C
N		56	10133278	CS FIX	CSTW-4	1	1	1	1	1	1	AA	C
				SCREW	S-PAMA-2.5X4ZC	2	2	2	2	2	2		X
				SCREW	S-WLPT-3X8ZC	10	10	10	10	10	10		X
		57	10079914	CUTTER/PAPER E272	E441364-1	1	1	1	1	1	1	AA	C
				SCREW	S-PASWMA-3X4ZC	2	2	2	2	2	2		X
				SCREW	S-WLST-3X8ZC	2	2	2	2	2	2		X
N				SHEET/INS E270	RJE500820-001V01	1	1	1	1	1	1		X
N				LABEL/THERMAL E270	RJE500832-001V01	1	1	1	1	1	1		X
N				WIRE ASSY/FG	RJE500844*001V01	1	1	1	1	1	1		X
N		58	10142489	ROLLER/DP E270	RJE500851-001V01	1	1	1	1	1	1	AK	C
N		59	10142434	COVER/JOURNAL E270	RJE500717-001V02	1	1	1	1	1	1	AM	C
N		60	10110554	COVER/BATTERY E272	RJE500211-001V01	1	1	1	1	1	1	AC	C
N		61	10126973	PULLY/WINDING E270	RJE500691-001V01	1	1	1	1	1	1	AE	C
N		62	10126974	SPOOL/PAPER HOLDER E270	RJE500720-001V01	1	1	1	1	1	1	AB	C
N		63	10142430	PANEL/DISPLAY E270	RJE500714-001V02	1	1	1	1	1	1	AU	C
		64	10104982	KEY SET SUB ASSY	RJE500074*003V01		1					AE	C
		65	10104981	KEY SET SUB ASSY	RJE500074*002V01	1		1	1	1	1	AJ	C
N				SHEET/BLIND E270	RJE500784-001V01	1	1	1	1	1	1		X
N		66	10133219	RUBBER/COSMETIC E270B	RJE500721-002V01	1	1	1	1	1	1	AP	C
N				LABEL/PUSH E270	RJE500802-001V01	1	1	1	1	1	1		X
6. PRINTER PCB BLOCK													
N		67	10131710	PCB ASSY/E270-PR	RJE500764*001V01	1	1	1	1	1	1	AU	A
N	D1		10136123	LED	HLMP-1503	1	1	1	1	1	1	AB	A
N	R1		10136124	RESISTOR/CARBON	ERD-25TJ331V	1	1	1	1	1	1	AA	C
	SW1-3		34121029	SWITCH	SKHHAL	3	3	3	3	3	3	AA	B
N	CN1		10136125	CONNECTOR	52807-3010	1	1	1	1	1	1	AE	C
N	CN2		10136126	CONNECTOR	52806-2410	1	1	1	1	1	1	AD	C
N			36131197	SPACER/LED	LH-5-10.5	1	1	1	1	1	1	AA	C

PCR-T265/PCR-T275

N	Item	Code No.	Parts Name	Specification	Q'ty			Price Code	R	
					Canada	U.S.A.				
						OSS	WHC			
1. MAIN PCB BLOCK										
N		1	10131709	PCB ASSY/E270-1	RJE500763*002V01	1	1	1	CP	A
N	IC4		10139759	LSI	UPD784215AGC2378EU	1	1	1	CG	A
N	IC6		10136173	IC/RESET	S-80819CNNB-B8E	1	1	1	AD	B
N	IC8		10136174	IC	LB1846M	1	1	1	AS	B
N	IC1,2		10132897	IC	ULN2003AFW	2	2	2	AF	B
	Q7		10082597	TRANSISTOR	FSS133-TL	1	1	1	AN	C
	Q3,11		79113038	TRANSISTOR	DTC114YUA-T106	2	2	2	AA	C
	Q18		22501601	TRANSISTOR	2SC4617TLQ	1	1	1	AA	C
	Q17		10079246	TRANSISTOR	2SD2261-TD	1	1	1	AF	B
	Q1,2		10076311	TRANSISTOR	2SD1626-TD	2	2	2	AC	C
	D1-3,5,6,8,9		23902058	DIODE	1SR154-400TE25	7	7	7	AB	C
N	D10		10136175	DIODE	RB160L-40T-25	1	1	1	AC	C
	D4		10905733	DIODE	HA17431VLP-EL	1	1	1	AC	C
	C3			CAPACITOR/CHIP	UWT1C101MCR1GB	1	1	1		X
	C28			CAPACITOR/CHIP	UWT1C100MCR1GB	1	1	1		X
	C39			CAPACITOR/CHIP	MCH185A150J	1	1	1		X
	C22,29			CAPACITOR/CHIP	MCH185CN222K	2	2	2		X
	C27,30			CAPACITOR/CHIP	GRM21BB11H104KA11L	2	2	2		X
	C2,15-17,19,20,24,26,31			CAPACITOR/CHIP	MCH185A101J	9	9	9		X
	C12,14,37,38			CAPACITOR/CHIP	MCH182FN104Z	4	4	4		X
	C18			CAPACITOR/CHIP	MCH182CN102K	1	1	1		X
	RM1-4			RESISTOR/CHIP NETWORK	MNR14E0ABJ103	4	4	4		X
	R58			RESISTOR/CHIP	MCR03EZPFX2002	1	1	1		X
	R3,5,6,11-13,33-42,44,45,49,50,55,59,63-68,72,75-77,79			RESISTOR/CHIP	MCR03EZHJ103	33	33	33		X
	R2,4,52,74			RESISTOR/CHIP	MCR03EZHJ472	4	4	4		X
	R16-30,48,54,56,60,61,69,73,78			RESISTOR/CHIP	MCR03EZHJ000	23	23	23		X
	R1,7,47			RESISTOR/CHIP	MCR03EZHJ102	3	3	3		X
	R81			RESISTOR/CHIP	MCR03EZHJ334	1	1	1		X
	R71			RESISTOR/CHIP	MCR03EZHJ201	1	1	1		X
	R86,95-99			RESISTOR/CHIP	MCR03EZHJ223	6	6	6		X
	R62			RESISTOR/CHIP	MCR03EZHJ185	1	1	1		X
N	X4		10136159	CRYSTAL/CERAMIC	CSTCE12M5G52-B0	1	1	1	AI	B
	X5		10094206	CRYSTAL	C-002RX-8.3/10	1	1	1	AF	B
	FU1		30007777	FUSE	230.600	1	1	1	AE	A
	L1			INDUCTOR/CHIP	FBMH3216HM501NT	1	1	1		X
	SP1		10079249	BUZZER	PKM22EPT-2001-B0	1	1	1	AG	C
N	CN11		10136160	CONNECTOR	HEC3600-010510	1	1	1	AH	C
	CN8		35007122	CONNECTOR	53253-0310	1	1	1	AA	C
N	CN7		10136161	CONNECTOR	IL-G-2P-S3T2-SA	1	1	1	AA	C
	CN6		35016244	CONNECTOR	B2B-PH-K-S	1	1	1	AA	C
N	CN9		10136125	CONNECTOR	52807-3010	1	1	1	AE	C
N	CN1		10136133	CONNECTOR	52044-2145	1	1	1	AC	C
N	Q16		10136163	TRANSISTOR	2SD1784	1	1	1	AE	B
	R57,70			RESISTOR/CHIP	RC1608-152-F-T	2	2	2		X
	R53,87-91			RESISTOR/CHIP	MCR03EZHJ105	6	6	6		X
N	CN3		62214761	CONNECTOR	52045-2145	1	1	1	AC	C
	C1			CAPACITOR/CHIP	UVR1C332MHA	1	1	1		X
	C21			CAPACITOR/CHIP	UVR1C102MPA	1	1	1		X
N	Q4-6,12,13		10136167	TRANSISTOR	2SB1126	5	5	5	AH	C
	R93			RESISTOR/CHIP	MCR10EZHJ000	1	1	1		X
	C40			CAPACITOR/CHIP	MCH185A180J	1	1	1		X
N	R43		10140511	RESISTOR/METAL OXIDE	ERG-1SJ120P	1	1	1	AA	C
	R92			RESISTOR/CHIP	MCR03EZHJ101	1	1	1		X
N	IC7		10095125	IC/RESET	S-80845CNNB-B86-T2	1	1	1	AD	B
	R82			RESISTOR/CHIP	MCR03EZHJ432	1	1	1		X
	R83			RESISTOR/CHIP	MCR03EZHJ912	1	1	1		X
2.MAIN DISPLAY & CUSTOMER DISPLAY BLOCK										
N		2	10131711	PCB ASSY/E270-E2-1	RJE500765*001V01	1	1	1	CM	A
	D1-4(Main)&D1-4(Rear)		10072597	LED/7SEG	HDSP-521G	8	8	8	AN	B
N	D5		10136131	LED/16SEG	PSA05-12GWA	1	1	1	AU	B
N	D7,8		10136132	LED	HLMP-S501	2	2	2	AC	B

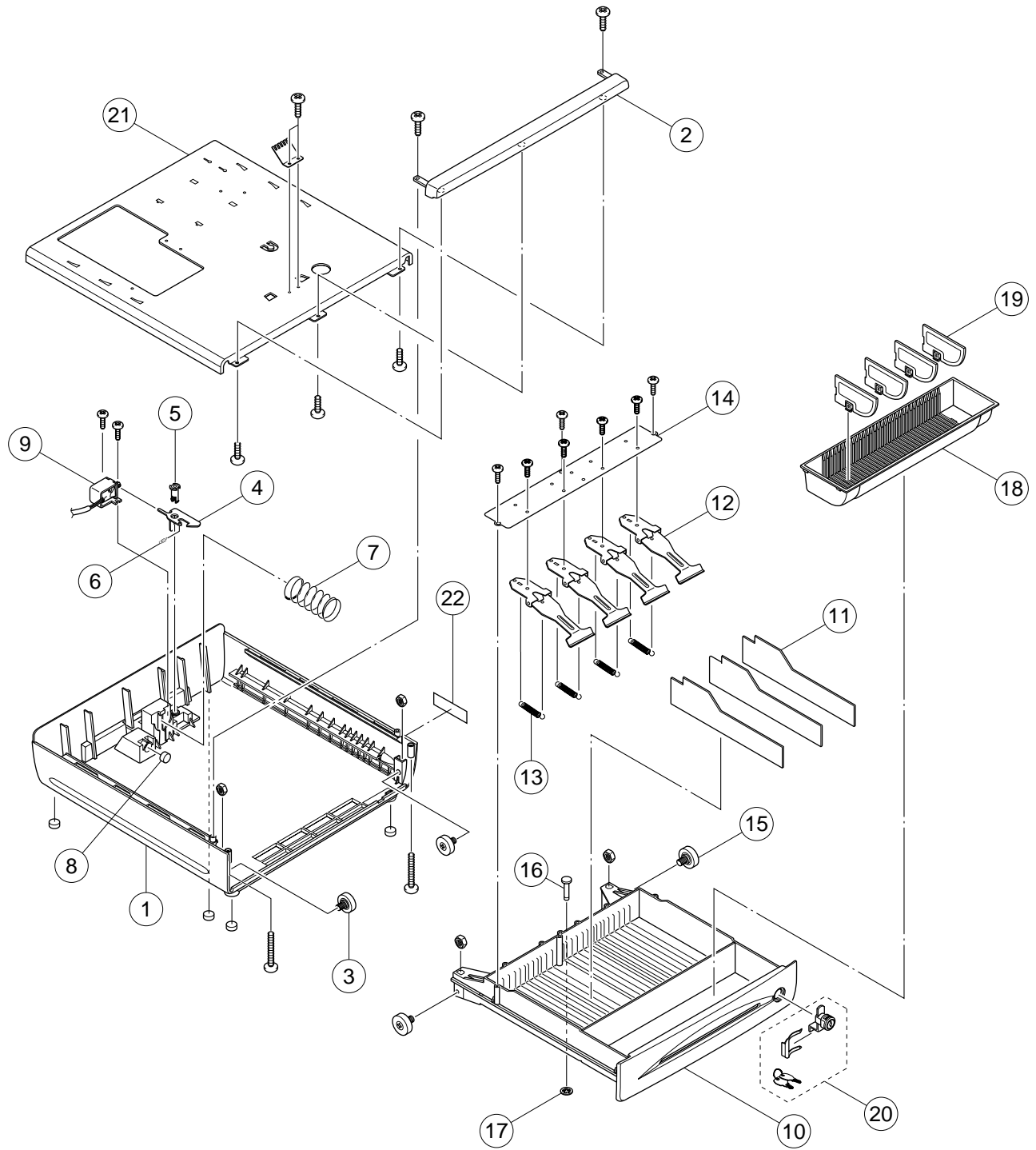
PCR-T265/PCR-T275

N	Item	Code No.	Parts Name	Specification	Q'ty			Price Code	R
					Canada	U.S.A.			
						OSS	WHC		
N	CN1	10136133	CONNECTOR	52044-2145	1	1	1	AC	C
N		3 10136135	CABLE/PARALLEL	RJE500808-001	1	1	1	AC	C
		10080400	HOLDER/LED	RJE500001-001	1	1	1	AA	C
N		4 10136136	CABLE/PARALLEL	RJE500808-002	1	1	1	AA	C
N	R1-7,10-20(Main)	10140508	RESISTOR/CARBON	CF1/4CT52R131J	33	33	33	AA	C
N	R1-15(Rear)								
N	R8,9	10140509	RESISTOR/CARBON	CF1/4CT52R750J	2	2	2	AA	C
3. BUTTON BLOCK									
N		5 10127004	FLAME/KB E270	RJE500678-001V01	1	1	1	AH	C
N		6 10127005	BUTTON/S E270-1	E341252-023V01	1	1	1	AA	C
N		7 10127006	BUTTON/S E270-2	E341252-024V01	1	1	1	AA	C
N		8 10127007	BUTTON/S E270-3	E341252-025V01	1	1	1	AA	C
N		9 10127008	BUTTON/S E270-4	E341252-026V01	1	1	1	AA	C
N		10 10127009	BUTTON/S E270	E341253-003V01	1	1	1	AA	C
N		11 10127010	BUTTON/S E270-6	E341252-027V01	1	1	1	AA	C
N		12 10127011	BUTTON/S E270-7	E341252-028V01	1	1	1	AA	C
N		13 10127012	BUTTON/S E270-8	E341252-029V01	1	1	1	AA	C
N		14 10127013	BUTTON/S E270-9	E341252-030V01	1	1	1	AA	C
N		15 10072621	BUTTON/S E270-0	E341252-9	1	1	1	AA	C
N		16 10127014	BUTTON/S E270-	E341252-031V01	1	1	1	AA	C
N		17 10127015	BUTTON/S E270-00	E341252-032V01	1	1	1	AA	C
		18 10072609	KEYTOP/S E272	E341250-1	27	27	27	AA	C
		19 10110556	KEYTOP/L E266	RJE500369-004V01	4	4	4	AA	C
		20 10072610	CAP/S E272	E341251-1	15	15	15	AA	C
		21 10110557	CAP/L E227	RJE500370-001V01	4	4	4	AA	C
		22 62453530	RUBBER/CONTACT E240	E411877-1	31	31	31	AA	C
		23 10097045	SPRING/PRESS A-E272	E441298-001V02	4	4	4	AA	C
N		24 10097046	SPRING/PRESS B-E272	E441298-002V02	4	4	4	AA	C
N		25 10127016	FPC/E270	RJE500681-001V01	1	1	1	AH	C
N		26 10127017	SPACER/E270	RJE500680-001V01	1	1	1	AH	C
N		27 10127018	SHEET/COMMON E270	RJE500679-001V01	1	1	1	AH	C
N		28 10127019	CHASSIS/KB E270	RJE500682-001V01	1	1	1	AE	C
			SCREW	3X8 ZMC-3	2	2	2		X
	FEED		PLATE/S 1E270	RJE500737-001	1	1	1		X
	C		PLATE/S 2E270	RJE500737-002	1	1	1		X
	X/FOR/DATE TIME		PLATE/S2 1E270	RJE500740-001	1	1	1		X
	-/ERR.CORR		PLATE/S 4E270	RJE500737-004	1	1	1		X
	PLU		PLATE/S 5E270	RJE500737-005	1	1	1		X
	#/DEPT SHIFT		PLATE/S 6E270	RJE500737-006	1	1	1		X
	%/CLK#		PLATE/S 7E270	RJE500737-007	1	1	1		X
	RC/T/S1		PLATE/S 8E270	RJE500737-008	1	1	1		X
	PD/T/S2		PLATE/S 9E270	RJE500737-009	1	1	1		X
	CH		PLATE/S 10E270	RJE500737-010	1	1	1		X
	CHK/NS		PLATE/S 11E270	RJE500737-011	1	1	1		X
	SUB TOTAL		PLATE/S 12E270	RJE500737-012	1	1	1		X
	MD/ST		PLATE/S 13E270	RJE500737-013	1	1	1		X
	+/4 9 14		PLATE/S 14E270	RJE500737-014	1	1	1		X
	5 10 15		PLATE/S 15E270	RJE500737-015	1	1	1		X
	*/3 8 13		PLATE/L 3E270	RJE500738-003	1	1	1		X
	CA/AMT TEND		PLATE/L2 1E270	RJE500816-001	1	1	1		X
	+/1 6 11		PLATE/L 6E270	RJE500738-006	1	1	1		X
	-/2 7 12		PLATE/L 7E270	RJE500738-007	1	1	1		X
4. POWER SUPPLY BLOCK									
N		29 10126963	POWER SUPPLY ASSY	RJE500746*001V01	1	1	1	CS	A
N		10140677	CORD/POWER	AR1CSEX270-US	1	1	1	AP	C
N			MOUNT/POWER CORD E270	RJE500722-001V02	1	1	1		X
N		30 10142495	HOLDER/PS E270	RJE500777-001V02	1	1	1	AB	X
			SCREW	S-WLST-3X8ZC	3	3	3		X
			TIE/INSULOCK	T-18S	1	1	1		X
5. UPPER CASE BLOCK									
N		31 10142429	CASE/UPPER E270	RJE500677-001V02	1	1	1	AY	C
N		32 10143167	COVER/PRINTER E270	RJE500716-001V03	1	1	1	AJ	C
N		33 10126995	BUTTON /EJECT	RJE500718-001V01	1	1	1	AA	C
N		34 10142427	ARM-EJECT	RJE500719-001V02	1	1	1	AA	C
N		35 10126997	MOUNT/PRINTER E270	RJE500724-001V01	1	1	1	AD	C
N		36 10126998	SHAFT/E270	RJE500725-001V01	1	1	1	AB	C

PCR-T265/PCR-T275

N	Item	Code No.	Parts Name	Specification	Q'ty			Price Code	R	
					Canada	U.S.A.				
						OSS	WHC			
N		37	10126999	MOUNT/PCB E270	RJE500728-001V01	2	2	2	AA	C
N		38	10127000	SPRING/PRESS E270	RJE500729-001V01	1	1	1	AA	C
N		39	10127001	PLATE/SW E270	RJE500741-001V01	1	1	1	AF	C
		40	10072504	MODE KEY SW ASSY	E341249*1	1	1	1	AT	A
		41	10072509	WIRE ASSY	E441293*1	1	1	1	AA	C
		42	10072506	CONNECTOR ASSY	E441294*1	1	1	1	AA	C
		43	32003672	MOTOR	MXN-13FB12F	1	1	1	AV	A
		44	62481102	RUBBER/WINDER	E440641-1	1	1	1	AB	A
		45	10078863	MOUNT/WIND MOTOR E272	E441355-1	1	1	1	AA	C
				SCREW	3X4 ZMC-3	1	1	1		X
N		46	10135032	CONNECTOR ASSY/MOTOR	E441296*002V01	1	1	1	AB	C
		47	63224499	SPRING/A-G55	A42606-1	1	1	1	AA	C
		48	60006091	SPRING/G67	A43656-1	1	1	1	AA	C
		49	60010862	SPRING/B-1G513	P408-1	1	1	1	AB	C
		50	60010871	SPRING/B-2G513	P409-1	1	1	1	AA	C
N		51	10142488	ROLLER/PR E270	RJE500850-001V01	1	1	1	AK	C
N		52	10125419	THERMAL PRINTER	LTPZ225A-C192	1	1	1	CB	A
N		53	10131698	FFC JOINER/A-E270	E441342-004V01	1	1	1	AD	C
N		54	10131695	FFC JOINER/B-E270	RJE500785-001V01	1	1	1	AG	C
N		55	10133277	RIVETS/COLD HEADED	4X28	1	1	1	AA	C
N		56	10133278	CS FIX	CSTW-4	1	1	1	AA	C
				SCREW	S-PAMA-2.5X4ZC	2	2	2		X
				SCREW	S-WLPT-3X8ZC	10	10	10		X
		57	10079914	CUTTER/PAPER E272	E441364-1	1	1	1	AA	C
				SCREW	S-PASWMA-3X4ZC	2	2	2		X
				SCREW	S-WLST-3X8ZC	2	2	2		X
N				SHEET/INS E270	RJE500820-001V01	1	1	1		X
N				LABEL/THERMAL E270	RJE500832-001V01	1	1	1		X
N				WIRE ASSY/FG	RJE500844*001V01	1	1	1		X
N		58	10142489	ROLLER/DP E270	RJE500851-001V01	1	1	1	AK	C
N		59	10142434	COVER/JOURNAL E270	RJE500717-001V02	1	1	1	AM	C
N		60	10110554	COVER/BATTERY E272	RJE500211-001V01	1	1	1	AC	C
N		61	10126973	PULLY/WINDING E270	RJE500691-001V01	1	1	1	AE	C
N		62	10126974	SPOOL/PAPER HOLDER E270	RJE500720-001V01	1	1	1	AB	C
N		63	10142431	PANEL/DISPLAY E270	RJE500714-002V02		1		AU	C
N		63	10142432	PANEL/DISPLAY E270	RJE500714-003V02	1		1	AU	C
N		65	10104981	KEY SET SUB ASSY	RJE500074*002V01	1	1	1	AJ	C
N				SHEET/BLIND E270	RJE500784-001V01	1	1	1		X
N		66	10126975	RUBBER/COSMETIC E270B	RJE500721-001V01	1	1	1	AP	C
N				LABEL/PUSH E270	RJE500802-001V01	1	1	1		X
6. PRINTER PCB BLOCK										
N		67	10131710	PCB ASSY/E270-PR	RJE500764*001V01	1	1	1	AU	A
N	D1		10136123	LED	HLMP-1503	1	1	1	AB	A
N	R1		10136124	RESISTOR/CARBON	ERD-25TJ331V	1	1	1	AA	C
N	SW1-3		34121029	SWITCH	SKHHAL	3	3	3	AA	B
N	CN1		10136125	CONNECTOR	52807-3010	1	1	1	AE	C
N	CN2		10136126	CONNECTOR	52806-2410	1	1	1	AD	C
N			36131197	SPACER/LED	LH-5-10.5	1	1	1	AA	C

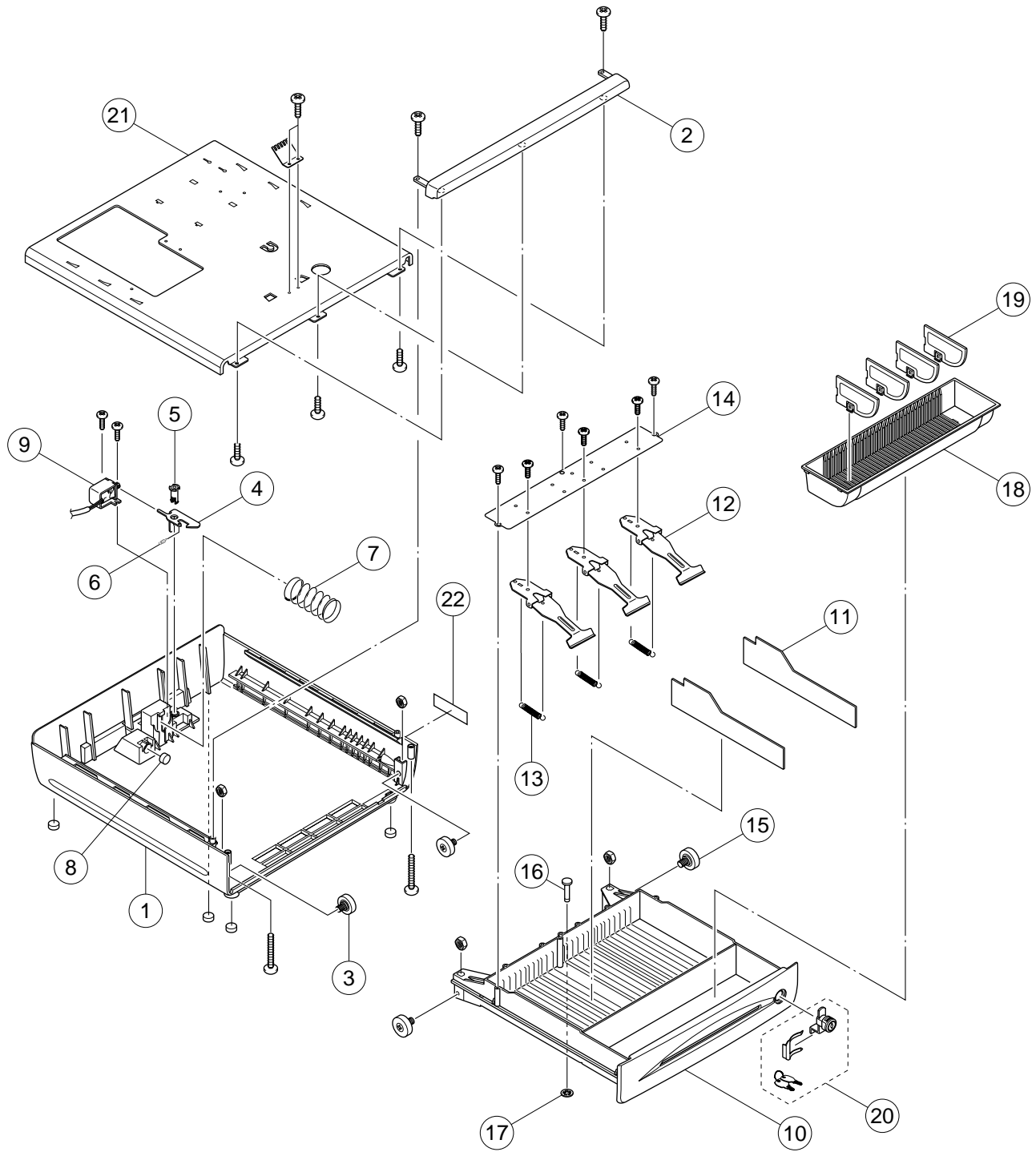
7. DRAWER (DL-1329)



DL-1329(S type) U.S.A.

N	Item	Code No.	Parts Name	Specification	Qt'y	Price code	Rank
N	1	10127601	CASE/MAIN	RJE500670-001V01	1	BC	X
N	2	10127602	PLATE/T.C ED21-16	RJE500672-001V01	1	BG	C
	3	55000878	ROLLER/DELTRIN	DR-19B2	2	AP	B
	4	10078764	LEVER/HOOK ED16	E341286-1	1	AA	C
N	5	10127603	AXIS/HOOK LEVER ED21	RJE500674-001V01	1	AA	C
	6	10080393	SPRING/LOCK ED16	RJE500007-001V01	1	AA	C
	7	62466522	SPRING/PRESS ED14	E412137-1	1	AA	C
	8	62466529	RUBBER/ED14	E412136-1	5	AD	C
			SCREW	4X25 ZMC-3	1		X
			NUT	4 ZMC-3	1		X
			NUT	6 ZMC-3	2		X
			WASHER	11.5X6.5X0.8	2		X
			SCREW	3X8 ZMC-3	4		X
			SCREW	3X20 ZMC-3	2		X
N	9	10087969	SOLENOID SUB ASSY	RJE500126*002V01	1	AW	B
N	10	10127599	DRAWER/ED21-16	RJE500671-001V01	1	AZ	C
N	11	10106265	PLATE/PARTITION S-BK	RJE500214-001V01	3	AA	C
	12	10115095	BILL HOLDER SUB ASSY	E341290*001V02	4	AD	C
	13	10079063	SPRING/BILL HOLDER ED16	E441357-1	4	AA	C
	14	10080123	PLATE/BILL HOLDER FIX ED16	E341289-1	1	AD	X
			SCREW	3X5 NI	4		X
	15	55000878	ROLLER/DELTRIN	DR-19B2	2	AP	B
			NUT	6 ZMC-3	2		X
	16	54400287	RIVETS/COLD HEADED	5X26	1	AA	X
	17	55801452	CS FIX	CTSW-5	1	AA	X
N	18	10140789	CASE/COIN E266	RJE500212-001V02	1	AG	C
	19	10109076	SEPARATER/COIN E266	RJE500213-001V01	4	AK	C
	20	10120527	LOCK/CYLINDER	CL-16C	1	AS	C
			SCREW	3X8 ZMC-3	3		X
N	21	10127609	COVER/TOP E270-16	RJE500753-001V01	1	BJ	X
			SCREW	3X6 ZMC-3	3		X
	22		LABEL/DL-1329	E341256-40	1		X

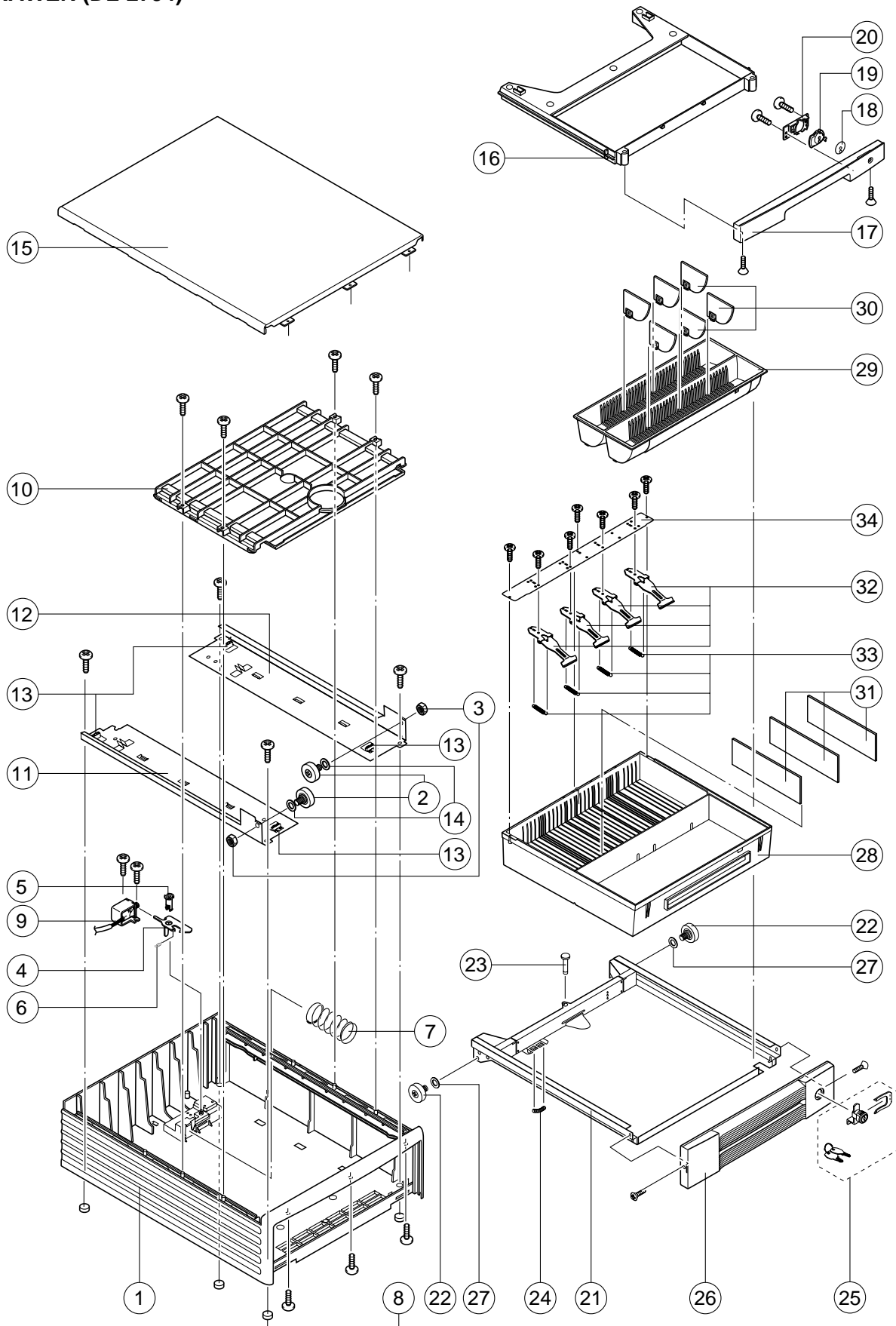
8. DRAWER (DL-1841)



DL-1841(M type) Germany, Europe, Other countries

N	Item	Code No.	Parts Name	Specification	Qt'y	Price code	Rank
N	1	10127601	CASE/MAIN	RJE500670-001V01	1	BC	X
N	2	10127602	PLATE/T.C ED21-16	RJE500672-001V01	1	BG	C
	3	55000878	ROLLER/DELFIN	DR-19B2	2	AP	B
	4	10078764	LEVER/HOOK ED16	E341286-1	1	AA	C
N	5	10127603	AXIS/HOOK LEVER ED21	RJE500674-001V01	1	AA	C
	6	10080393	SPRING/LOCK ED16	RJE500007-001V01	1	AA	C
	7	62466522	SPRING/PRESS ED14	E412137-1	1	AA	C
	8	62466529	RUBBER/ED14	E412136-1	5	AD	C
			SCREW	4X25 ZMC-3	1		X
			NUT	4 ZMC-3	1		X
			NUT	6 ZMC-3	2		X
			WASHER	11.5X6.5X0.8	2		X
			SCREW	3X8 ZMC-3	4		X
			SCREW	3X20 ZMC-3	2		X
N	9	10087969	SOLENOID SUB ASSY	RJE500126*002V01	1	AW	B
N	10	10127599	DRAWER/ED21-16	RJE500671-001V01	1	AZ	C
N	11	10106265	PLATE/PARTITION S-BK	RJE500214-001V01	2	AA	C
	12	10115095	BILL HOLDER SUB ASSY	E341290*001V02	3	AD	C
	13	10079063	SPRING/BILL HOLDER ED16	E441357-1	3	AA	C
	14	10080123	PLATE/BILL HOLDER FIX ED16	E341289-1	1	AD	X
			SCREW	3X5 NI	3		X
	15	55000878	ROLLER/DELFIN	DR-19B2	2	AP	B
			NUT	6 ZMC-3	2		X
	16	54400287	RIVETS/COLD HEADED	5X26	1	AA	X
	17	55801452	CS FIX	CTSW-5	1	AA	X
N	18	10140789	CASE/COIN E266	RJE500212-001V02	1	AG	C
	19	10109076	SEPARATER/COIN E266	RJE500213-001V01	4	AK	C
	20	10120527	LOCK/CYLINDER	CL-16C	1	AS	C
			SCREW	3X8 ZMC-3	3		X
N	21	10127609	COVER/TOP E270-16	RJE500753-001V01	1	BJ	X
			SCREW	3X6 ZMC-3	3		X
	22		LABEL/DL-1841	E341256-41	1		X

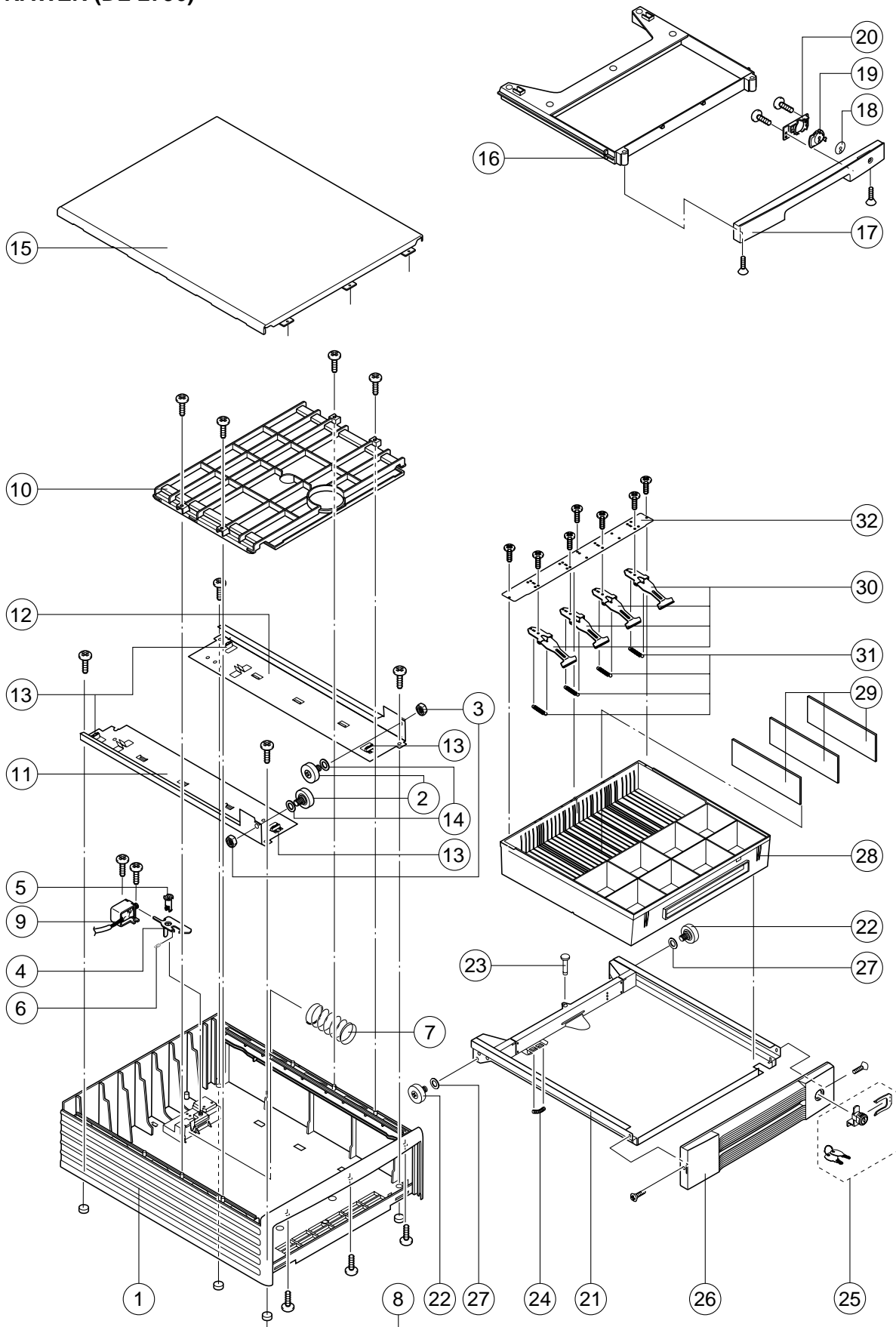
9. DRAWER (DL-2794)



DL-2794(M type) Europe, Other countries

N	Item	Code No.	Parts Name	Specification	Qt'y	Price code	Rank
1. MAIN CASE BLOCK							
	1	10078897	CASE/MAIN	E140494-1	1	BS	X
	2	55000619	ROLLER/DELRLIN	DR-19B1	2	AG	B
	3	10079066	NUT	6 ZMC-3	2	AA	X
	4	10078764	LEVER/HOOK	E341286-1	1	AA	C
	5	10078754	AXIS/HOOK LEVER	E341241-1	1	AA	C
	6	10080393	SCREW	3X8 ZMC-3	4		X
	7	10080393	SPRING/LOCK	RJE500007-001	1	AA	X
	8	62465010	SPRING/PRESS	E412069-1	1	AA	X
	9	62466529	RUBBER/PAD	E412136-1	4	AD	X
	10	10080191	SOLENOID SUB ASSY	E341301*4	1	BC	B
	11	10078901	COVER/UPPER	E140498-1	1	AN	X
	12	10078759	RAIL/MLED18	E240841-1	1	AQ	C
	13	10078760	RAIL/MRED18	E240842-1	1	AQ	C
	14	10080450	RUBBER/DUMPER	RJE500005-001	4	AB	X
	15	10079068	SCREW	4X10 ZMC-3	6		X
N		10079068	WASHER	6X13X1.0 ZMC-3	2	AA	X
		10126629	COVER/TOP	RJE500742-001	1	BV	X
			SCREW	3X8 NI	3		X
N		10078889	LABEL/DL-2778	E341256-9	1	AA	X
		10135773	WEIGHT/COUNTER ED18	RJE500819-001	1	AZ	X
			SCREW	4X10 ZMC-3	2		X
2. UPPER DRAWER							
	16	10078898	DRAWER/UPPER	E140495-1	1	AT	C
	17	10078899	PANEL/FRONT	E140496-1	1	AP	X
	18	10078740	PLATE/STP	E441288-1	1	AA	C
	19	10078741	LEVER/STP	E341242-1	1	AA	C
	20	10078755	HOLDER/STP	E341243-1	1	AA	C
			SCREW	3X8 ZMC-3	2		X
			SCREW	3X10 NI	2		X
3. LOWER DRAWER							
	21	10078903	DRAWER SUB ASSY/LOWER	E341274*1	1	BJ	X
	22	55000619	ROLLER/DERULIN	DR-19B1	2	AG	B
	23	52000106	RIVET	5X30	1	AA	X
	24	62465030	SPRING/EARTH	E412092-1	1	AA	X
	25	10079060	LOCK/CYLINDER	CL-16	1	BA	C
	26	10078900	PANEL/FRONT	E140497-1	1	AV	X
			SCREW	3X10 NI	2		X
	27	54400399	WASHER	6X13X1.0 ZMC-3	2	AA	X
	28	10078757	CASE/BILL	E140505-1	1	AT	C
	29	62473935	CASE/COIN	E140058-1	1	AX	C
	30	10051420	PLATE/COIN CASE PARTITION	E340173A-1	6	AC	C
	31	62214911	PLATE/BILL CASE PARTITION	ZD43652	3	AC	C
	32	10079062	BILL HOLDER SUB ASSY	E341290*1	4	AE	B
	33	10079063	SPRING/BILL HOLDER	E441357-1	4	AA	C
	34	10079064	BRACKET/BILL HOLDER	E240845-1	1	AD	X
			SCREW	3X8 ZMC-3	3		X
			SCREW	3X5 NI	4		X

10. DRAWER (DL-2796)



DL-2796(M type) UK, Canada

N	Item	Code No.	Parts Name	Specification	Qt'y	Price code	Rank
1. MAIN CASE BLOCK							
	1	10078897	CASE/MAIN	E140494-1	1	BS	X
	2	55000619	ROLLER/DELRIN	DR-19B1	2	AG	B
	3	10079066	NUT	6 ZMC-3	2	AA	X
	4	10078764	LEVER/HOOK	E341286-1	1	AA	C
	5	10078754	AXIS/HOOK LEVER	E341241-1	1	AA	C
			SCREW	3X8 ZMC-3	4		X
	6	10080393	SPRING/LOCK	RJE500007-001	1	AA	X
	7	62465010	SPRING/PRESS	E412069-1	1	AA	X
	8	62466529	RUBBER/PAD	E412136-1	4	AD	X
	9	10080191	SOLENOID SUB ASSY	E341301*4	1	BC	B
	10	10078901	COVER/UPPER	E140498-1	1	AN	X
	11	10078759	RAIL/MLED18	E240841-1	1	AQ	C
	12	10078760	RAIL/MRED18	E240842-1	1	AQ	C
	13	10080450	RUBBER/DUMPER	RJE500005-001	4	AB	X
			SCREW	4X10 ZMC-3	6		X
N	14	10079068	WASHER	6X13X1.0 ZMC-3	2	AA	X
	15	10126629	COVER/TOP	RJE500742-001V01	1	BV	X
			SCREW	3X8 NI	3		X
		10078889	LABEL/DL-2778	E341256-9	1	AA	X
N		10135773	WEIGHT/COUNTER ED18	RJE500819-001V01	1	AZ	X
			SCREW	4X10 ZMC-3	2		X
2. UPPER DRAWER							
	16	10078898	DRAWER/UPPER	E140495-1	1	AT	C
	17	10078899	PANEL/FRONT	E140496-1	1	AP	X
	18	10078740	PLATE/STP	E441288-1	1	AA	C
	19	10078741	LEVER/STP	E341242-1	1	AA	C
	20	10078755	HOLDER/STP	E341243-1	1	AA	C
			SCREW	3X8 ZMC-3	2		X
			SCREW	3X10 NI	2		X
3. LOWER DRAWER							
	21	10078903	DRAWER SUB ASSY/LOWER	E341274*1	1	BJ	X
	22	55000619	ROLLER/DERULIN	DR-19B1	2	AG	B
	23	52000106	RIVET	5X30	1	AA	X
	24	62465030	SPRING/EARTH	E412092-1	1	AA	X
	25	10079060	LOCK/CYLINDER	CL-16	1	BA	C
	26	10078900	PANEL/FRONT	E140497-1	1	AV	X
			SCREW	3X10 NI	2		X
	27	54400399	WASHER	6X13X1.0 ZMC-3	2	AA	X
	28	62214910	CASE/BILL COIN	ZD43751	1	BM	C
	29	62214911	PLATE/BILL CASE PARTITION	ZD43652	3	AC	C
	30	10079062	BILL HOLDER SUB ASSY	E341290*1	4	AE	B
	31	10079063	SPRING/BILL HOLDER	E441357-1	4	AA	C
	32	10079064	BRACKET/BILL HOLDER	E240845-1	1	AD	X
			SCREW	3X8 ZMC-3	3		X
			SCREW	3X5 NI	4		X

CASIO TECHNO CO.,LTD.
Overseas Service Division

6-2, Hon-machi 1-Chome
Shibuya-ku, Tokyo 151-8543, Japan