

Wireless 802.11g MiniPCI Card

WM1260

OEM Installation Manual

**(The module is sold only to the OEM integrators & the
manual is valid only for the OEM manufactures)**

Version: 1.0
December, 2004

Federal Communication Commission Interference Statement

This equipment has been tested and found to comply with the limits for a Class B digital device, pursuant to Part 15 of the FCC Rules. These limits are designed to provide reasonable protection against harmful interference in a residential installation. This equipment generates, uses and can radiate radio frequency energy and, if not installed and used in accordance with the instructions, may cause harmful interference to radio communications. However, there is no guarantee that interference will not occur in a particular installation. If this equipment does cause harmful interference to radio or television reception, which can be determined by turning the equipment off and on, the user is encouraged to try to correct the interference by one of the following measures:

- Reorient or relocate the receiving antenna.
- Increase the separation between the equipment and receiver.
- Connect the equipment into an outlet on a circuit different from that to which the receiver is connected.
- Consult the dealer or an experienced radio/TV technician for help.

FCC Caution: To assure continued compliance, (example - use only shielded interface cables when connecting to computer or peripheral devices) any changes or modifications not expressly approved by the party responsible for compliance could void the user's authority to operate this equipment.

This device complies with Part 15 of the FCC Rules. Operation is subject to the following two conditions:

- (1) This device may not cause harmful interference, and
- (2) This device must accept any interference received, including interference that may cause undesired operation.

IMPORTANT NOTE:

This module is restricted to mobile configuration. To comply with FCC RF exposure compliance requirements, the antenna used for this transmitter must be installed to provide a separation distance of at least 20 cm from all persons and must not be co-located or operating in conjunction with any other antenna or transmitter. This transmitter module must not be co-located or operating in conjunction with any other antenna or transmitter

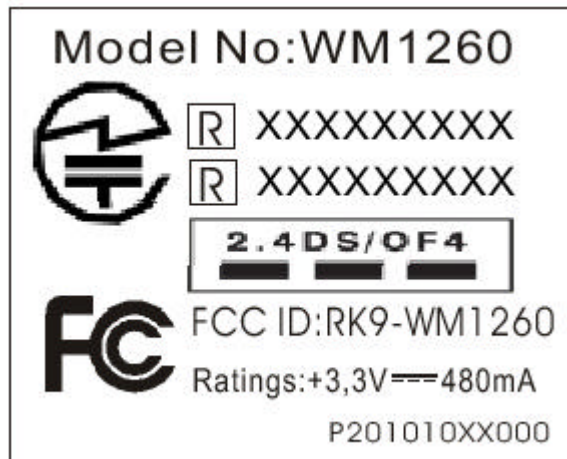
***Caution !!**

- (1). This module cannot be bound in a tablet computer for RF exposure issues. (See Label 1)**



Label 1

- (2). This module must be labeled with FCC ID. (See Label 2)**



Label 2

- (3). If the FCC ID is not visible when the module is installed inside another device, then the outside of device must also display a label referring to the enclosed module. The exterior label can be “ Contains Transmitter Module FCC ID:RK9-WM1260 ” or similar wording. (See label 3)

Contains Transmitter WM1260
FCC ID: RK9-WM1260

Label 3

Please put Label 3 to the enclosure of end product to note the end user.

Wireless 802.11g MiniPCI Card WM1260 Installation Manual



System Requirements

Software (supports the following operating systems):

- Windows XP
- Windows XP SP1
- Windows 2000
- Windows ME
- Windows 98SE

Hardware:

- Minimum configuration: Pentium 300 MHz, 128 MB RAM

Hardware Installation

For **Window XP** and **Window 2000**

Follow the steps below to install the WM1260 in your computer first.

1. Turn off the notebook PC.
2. Find the MiniPCI slot and open the cover.
3. Insert the WM1260 into the MiniPCI slot. Make sure the WM1260 contacts are fully seated in the MiniPCI slot.
4. Attach the antenna to the WM1260.
5. Cap the cover and power on the notebook PC.

For **Window ME** and **Window 98**

WARNING : Setup must be run before the hardware is inserted into the system.

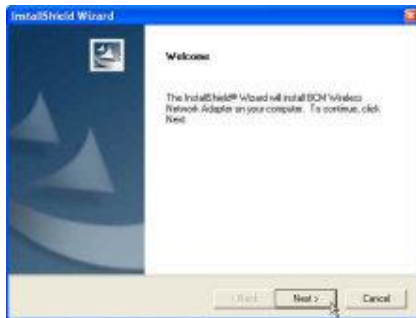
Software and Driver Installation

Follow the steps for the appropriate version of Windows to install the Wireless 802.11g MiniPCI Card driver.

Windows XP



1. When Windows automatically detects the Network Controller, click **Cancel**.



2. Insert the Driver CD into your CD-ROM drive.
3. Execute the **setup.exe** and then click **Next**.



4. When system appear the warning message, click **Continue Anyway**.



5. When system find the Broadcom 802.11g Network Adaptor, Click **Continue Anyway**.

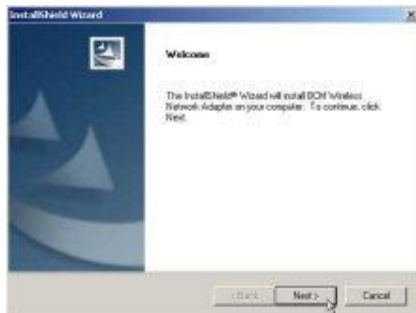


6. Click **Finish** and reboot the system.

Windows 2000



1. When Windows automatically detects the New Hardware, click **Cancel**.



2. Insert the Driver CD into your CD-ROM drive.
3. Execute the **setup.exe** and then click **Next**



4. When system appear the warning message, click **Yes**.



5. When system find the Broadcom 802.11g Network Adaptor, Click **Yes**



6. Click **Finish** and reboot the system.

Windows ME

WARNING : Setup must be run before the hardware is inserted into the system.



1. Insert the Driver CD into your CD-ROM drive.
2. Execute the **setup.exe** and then click **Yes**.



3. Click **Next** to continue the setup.



4. Click **Finish** and **shutdown** the computer when prompted.

Notice : Insert the WM1260 when System is shutdown. After the hardware installed, power on the notebook.



5. When system find the Broadcom 802.11g Network Adaptor, Choose the **Specify the location of the driver (Advance)** and then Click **Next**.



6. Click **Browse** and find the driver **BCMWL5.inf** location then click **Next**



7. Click **Next** to continue the setup.



8. Click **Finish**.



9. Click **Yes** and reboot the system

Windows 98

WARNING : Setup must be run before the hardware is inserted into the system.



1. Insert the Driver CD into your CD-ROM drive.
2. Execute the **setup.exe** and then click **Yes**.

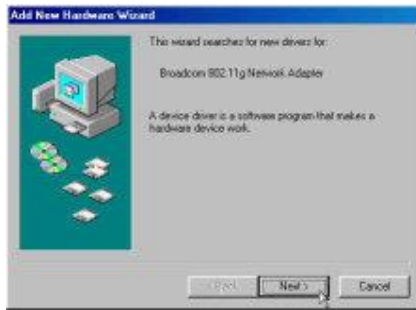


3. Click **Next** to continue the setup.



4. Click **Finish** and **shutdown** the computer when prompted.

Notice : Insert the WM1260 when System is shutdown. After the hardware installed, power on the notebook.



5. Click **Next** to continue the setup.



6. Click **Next** to continue the setup.



7. Click **Specify a location**

8. Click **Browse** and find the driver **BCMWL5.inf** location then click **Next**



9. Click **Next** to continue the setup.



10. Click **Yes** and reboot the system

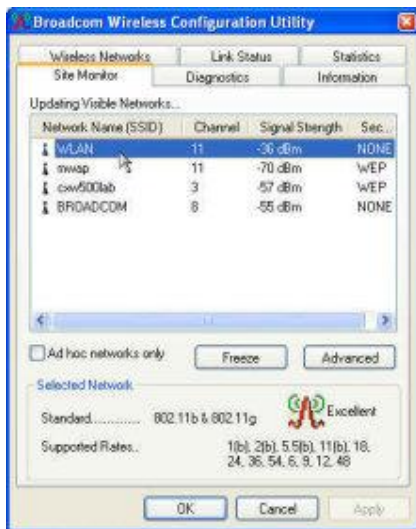
Configuration

Follow the steps for the appropriate version of Windows to configure the Wireless 802.11g MiniPCI Card.

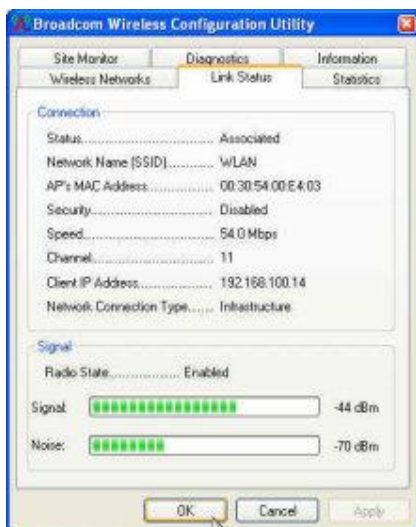
Windows XP



1. Right-click on the **Broadcom Wireless Configuration Utility** icon in the Windows XP system tray and select **Open Utility** to open the utility options.



2. Select the **Site Monitor** tab and select the Network you want to use.
3. Select the **Advanced** tab if need configure more.
4. Double Click the Network name and then connect the Network.

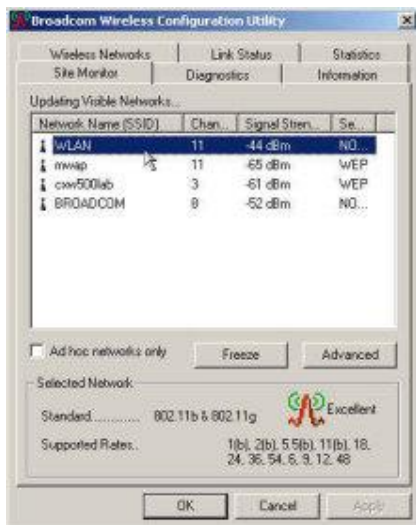


5. Select the **Link Status** tab and you can check the link status.

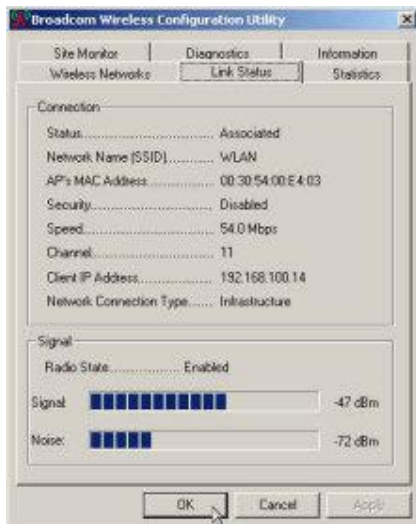
Windows 2000/ME/98



1. Right-click on the **Broadcom Wireless Configuration Utility** icon in the Windows XP system tray and select **Open Utility** to open the utility options.



2. Select the **Site Monitor** tab and select the Network you want to use.
3. Select the **Advanced** tab if need configure more.
4. Double Click the Network name and then connect the Network.



5. Select the **Link Status** tab and you can check the link status.