

TOP ENTRY BALL VALVES



WCB ASTM A351-CF3M
A494-CZ100 ASTM A494
ASTM A216-WCB
351-CF3M ASTM A351-CF3M
M A352 ASTM A351-CN7M
494-CZ100 ASTM A216-WCB
94-M35-1 ASTM A351-CN7M
B367-GR C ASTM A494-CW12MW
494 M B367-GR C
94-M35-1
494-CZ100
ASTM



TABLE OF CONTENTS

Top Entry Valve Features	2
Special Applications	3
How to Specify Top Entry Valves	4
Materials Selection	5-6
Flanged Series Top Entry Valves	7
Socket Weld & NPT Top Entry Valves	8
Buttweld Top Entry Valves	9
Bonnet Dimensions for Actuator Mounting	10
Dimensions for Actuator Pad Style Mounting	11
Flanged Full Port Dimensional Data	12
Flanged Full Port Actuator Mounting Data	13
Operating Torques	14
Extended Bonnet	15
Fugitive Emissions	16-17
Steam Jacketed Valves	18
Seat Performance Data	19-20
Steam Charts & Application Guide	21-24
Flow Coefficients	25
Terms and Conditions	26
Notes	27

Apollo® Top Entry Ball Valve Features

Top Entry Advantages:

- Self-Adjusting Seats: Compensate for Wear & Temperature Fluctuations
- Spring Loaded Low Pressure Seals
- Pressure Activated Seating
- Built-In Antistatic Feature
- Simplified In-line Service
- Minimal Potential Leak Paths

Standards Compliance

(Most valves within this family of products comply with the requirements of these listed standards.)

ASME B16.5	“Pipe Flanges and Flanged Fittings”
ASME B16.10	“Face to Face Dimensions of Valves” (Except Full Port Valves)
ASME B16.34	“Valves – Flanged, Threaded, and Welding End.”
ASME B31.1	“Power Piping”
ASME B31.3	“Chemical Plant and Petroleum Refinery Piping”
ASME B31.8	“Gas Transmission and Distribution Piping Systems”
API 607	“Fire Test – Soft Seated Quarter Turn Valves” (Depending on Seat and Seal Selection)
MSS SP-25	“Standard Marking System for Valves”
MSS SP-61	“Pressure Testing of Steel Valves”
MSS SP-72	“Ball Valves with Flanged or Buttweld Ends”

No Surprises

Apollo’s Top Entry Ball Valves offer more. In addition to the three things everyone has come to expect from Conbraco: high quality products, competitive pricing and on time delivery, Apollo Top Entry Valves deliver additional premiums; a broader choice of material for both internal and external components, more optional features to choose from, and selectable seal material combinations all resulting in an expanded serviceable application range.

Fit for Purpose

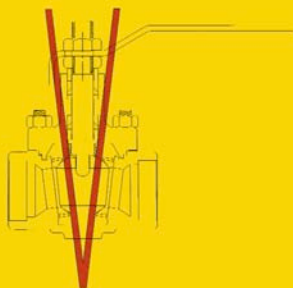
These premiums can be combined to create a product uniquely tailored to customer specifications and applications. These additional options allow a valve to be selected without compromising critical performance requirements or operating conveniences and without adding unnecessary features and the costs associated with them.

The Correct Design

The special “V” seating design introduced the self-adjusting seat to the floating ball valve. This design does not rely on the built-in interference of conventional floating ball valves. It provides automatic compensation for pressure, temperature and wear. As these changes occur, the ball and seats are continuously snugged down into the “V” resulting in positive leak-tight shutoff when using resilient seats. Maintaining a low pressure seal had been the most difficult condition for floating ball valves, the wedge effect on the ball and seats down the “V” assures continued low pressure sealing for the life of the seat. All Apollo Top Entry Valves have an “anti-static” feature designed in. All valve configurations also feature blow-out proof stems as standard.

The Right Application

Apollo’s Top Entry Valves provide simplified in-line maintenance in the most natural way. The valve body is allowed to act as a permanent part of the piping system. Potential leak paths are eliminated with the one piece body. Only the bonnet seal and stem seals remain to be counted. And with the variety of bonnet gaskets and stem seal arrangements available through the selection of optional features, even these threats can be minimized.



Top Entry Valves

“Fire-Safe” Requirements

Two seat and several seal arrangements are available to address valves in applications where performance during and immediately after a fire are a concern. The #7 (PTFE) and “A” (RPTFE) seat configurations offer “tested” fire-safe performance. Flexible graphite in the form of die-cut, die-formed or spiral wound gaskets are available for bonnet seals. Die-formed Grafoil® in various configurations provide the stem seals.

Abrasive & Erosive Services

“Soft Seated” valves for abrasive services feature seat inserts completely confined by metallic components. Some designs feature inner and outer seat support rings, where the inner ring helps shield the seat insert from abrasives in the service. Other designs feature one piece seatholders which completely confine the seat insert and provide the same function in protecting the soft seat from abrasive particles in the flow stream.

In addition to the seat configuration options, resilient and rigid seat materials are available. The rigid seat choices include carbon-graphite, ceramic, peek, and carbon reinforced peek. The seats and the ball are both produced from ceramic in the one case. Any of these seats provide improved resistance to abrasion and erosion and additionally extend the potential service range to 1000°F.

For steam services, the #5 seat, a RPTFE containing 55% bronze and 5% molybdenum disulfide, is an excellent choice as is the #4 carbon-graphite seat.

Valves for Chlorine Service

Valves intended for service in dry chlorine require specific alloy selections, design features, cleaning and testing procedures. In accordance with the guidelines established by “The Chlorine Institute”, Pamphlet 6-13th Edition (April 1993), Hastelloy trimmed carbon steel valves (model numbers starting with “CH”) are suggested, and M35-1 trimmed carbon steel valves (model numbers beginning “CM”) are the alternative for dry chlorine. All Hastelloy or M35-1 valves are also available, however, stainless steel valves or components are not recommended.

Selecting the required “HO” feature insures a valve that has been vented, cleaned, and tested to comply with the requirements of The Chlorine Institute Pamphlet 6.

Oxygen Service Valves

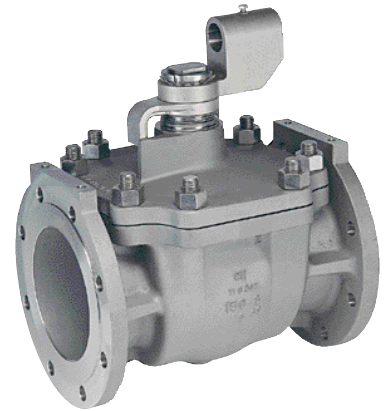
For this application, cleanliness is of utmost importance. Apollo Top Entry Valves specified for oxygen service (option “PO”) are subjected to rigorous preparation procedures including special pre-cleaning and inspection followed by ultrasonic cleaning and more intense inspection. All to insure that the finished valve is free of burrs and sharp edges as well as cleaned of hydrocarbon residues and particulate matter. Once valves destined for oxygen service enter Conbraco’s clean room for preparation, they do not leave until they have been cleaned, assembled, thoroughly tested, inspected, tagged and bagged to meet customer requirements.

All Apollo Top Entry Valves have “anti-static” features designed in. Valves for oxygen service must also be fitted with PTFE or RPTFE seats and packing. When planning to insulate valves, consider specifying one of our extended bonnet options.

High Temperature Service

For any applications utilizing metal, graphite, carbon graphite, peek, carbon reinforced peek, or ceramic seats, a ball stop should be incorporated into the valve design (option “RS”). This option is suggested at any temperature but it becomes a necessity above 500°F or when using ceramic or metal seats. The ball stop prevents the ball and seat from sliding down the 7° wedge when expansion caused by the temperature increase widens the wedge. If the ball was permitted to slide down the wedge, the valve would be locked tight when cooling caused the wedge to contract.

SPECIAL APPLICATIONS



**Apollo ANSI Class 150 Flanged
8-inch Titanium Top Entry Ball Valve**

Top Entry Valves

How To Specify Apollo Top Entry Ball Valves

0 0 - 0 0 0 - 0 0

A - Alloy 20
B - CF3M SS
(Flanged)
C - Carbon Steel
F - Inconel
H - Hastelloy C
M - M35-1
N - Nickel
S - 316 SS
T - Titanium

TRIM MATERIAL

A - Alloy 20
B - 316L SS
D - Hastelloy C Stem M35-1
Ball
E - 410 SS
F - Inconel
H - Hastelloy C
M - M35-1 (Monel)
N - Nickel
S - 316 SS
T - Titanium

B - 150# Flanged
C - 300# Flanged
D - 300# NPT
E - 150# FP Flange
F - 300# FP Flange
G - 300# NPT x Soc. Weld
H - 600# NPT
J - 600# Socket Weld
K - 600# Flanged
L - 300# FP NPT
M - 300# FP Soc. Weld
N - 300# Socket Weld
P - 300# Butt weld
Q - 600# NPT x Soc. Weld
R - 300# FLG x Butt weld
S - 300# RTJ Flanges
T - 600# FP Socket Weld
U - 600# FP Flange
W - 600# Butt weld
Y - 300# FP NPT x Socket Weld
3 - 300# FP Butt weld
4 - 600# FP NPT
6 - 600# FP NPT x Socket Weld
7 - 600# FP Butt weld
9 - 900# Flange

SEAT (FIGURES ON PAGE 15)

1 - TFE (Figure 1)
2 - RTFE (Figure 1)
3 - RTFE Seat (Figure 2)
4 - Carbon Graphite -750°F max.
(Figure 1)
5 - 55% Bronze, 5% Moly, (Figure 2)
6 - UHMWPE (Figure 2)
7 - API-607 Certified (TFE Seat, TFE
O-ring, Grafoil® Seal & Pkgs.)
8 - PEEK (Figure 2)
9 - Ceramic
A - API-607 Certified (RTFE Seat,
TFE O-ring, Grafoil® Seal &
Pkgs.)
B - 30% Carbon Reinforced PEEK
(Figure 2)
C - PFA (Figure 2)
D - SRTFE, 60% SS, 40% TFE by
weight (50% SS Min) (Figure 2)
F - CRTFE (Figure 1)
G - PCTFE (Figure 1)
H - High Temp Graphite-1000°F
max. (Figure 1)
K - Stellite Ball & Seats (Figure 4)
M - Malcomized 316 SS Ball & Seats
(Figure 4)
U - UHMWPE (Figure 1)

SIZE

3 - 1/2"
4 - 3/4"
5 - 1"
7 - 1-1/2"
8 - 2"
0 - 3"
A - 4"
C - 6"
E - 8"
G - 10"
H - 12"

OPTIONAL FEATURES

AR - Actuator Ready
BO - Grafoil® Seals & Packings
BN - TFE Spiralwound Bonnet Gasket
BS - Grafoil® Spiral Wound Bonnet
Gasket & Grafoil® Packings
CH - Clamp-On Steam Jacket - Stainless
Steel
CJ - Clamp-On Steam Jacket - Carbon Steel
CL - Cam-Lock Handle
EB - Extended Bonnet
EO - Round Handle
FC - Live Loaded Fugitive Emission w/
Double RPTFE Chevron Packings
FG - Fugitive Emission Bonnet with EVSP®
9000 Graphite Stem Packing
FL - Fugitive Emission Bonnet with Double
RPTFE Stem Packing

FO - Full Jacketed w/Oversize Flanges
FP - Live Loaded Fugitive Emission w/Double
EVSP Packings
GO - 2 1/4" Stem Extension
HH - Vented Body
HO - Vented Body & Cleaned for
Chlorine Service
HP - Vented Body & Cleaned for Hydrogen
Peroxide Service
*** MG** - Gear Operator
MT - 2 Position Lock Plate
for Standard Bonnet
MU - 2 Position Lock Plate for Extended
Bonnet
NC - NACE Certified Trim
OL - Oval Locking Handle
OO - RPTFE Seals & Packings

OM - RPTFE Bonnet Gasket & UHMWPE
Packings
PJ - Partial Steam Jacket
PO - Cleaned for Oxygen Service
PP - Cleaned for Industrial Gases
RS - Welded Ball Stop with Safety Cap
TP - Two Position Sliding Latch Lock Lever
ZO - PTFE Seals & Packings

NOTE: Optional Features may be used alone or in
combination (simply added in alphabetical
order), however not all combinations are
available on all valves. This is a very
limited list of the available options.
Contact the factory for specific
requirements and availability.

* MG Is Generic for Gear Operators. Contact Factory
or Price Book for Specific Application and Part No.

© EVSP is a registered trademark of Garlock.

Top Entry Valves

Materials Selection

Material Designation	A	C	H
Description	Alloy 20	Carbon Steel	Hastelloy C
Body	ASTM A351-CN7M	ASTM A216-WCB	ASTM A494-CW12MW
Body (Buttweld, Socket weld, and screwed ends)	ASTM A351-CN7M	ASTM A216-WCB	ASTM A494-CW12MW
Bonnet	ASTM A351-CN7M	ASTM A216-WCB	ASTM A494-CW12MW

Shell (External) Material Selection

Material Designation	M	N	S	T
Description	M35-1	Nickel (200)	Stainless Steel	Titanium
Body (Flanged ends)	ASTM A494-M35-1	ASTM A494-CZ100	ASTM A351-CF8M	ASTM B367-Gr C3
Body (Buttweld, Socket weld, and screwed ends)	ASTM A494-M35-1	ASTM A494-CZ100	ASTM A351-CF3M	ASTM B367-Gr C3
Bonnet	ASTM A494-M35-1	ASTM A494-CZ100	ASTM A351-CF8M	ASTM B367-Gr C3

External Designation	A	C	H	M
Seat Ring(s) (from bar, tube or pipe depending on availability)	ASTM B473-CB-3	ASTM A269-316 or ASTM A276-316 or ASTM A312-316	ASTM B574-C276	ASTM B164-400 or ASTM B165-400
Internal Spring (1 or 2 seats)	Inconel X-750	ASTM A313-Type 316	Inconel X-750	Inconel X-750
Internal Spring (3, 4, 5, 6, 7, 8, 9, A or Z seats)	Inconel X-750	Inconel X-750	Inconel X-750	Inconel X-750
Packing Gland	316 Stainless Steel	316 Stainless Steel	316 Stainless Steel	316 Stainless Steel
Packing Jam Nut	18-8 Stainless Steel	18-8 Stainless Steel	18-8 Stainless Steel	18-8 Stainless Steel
Lever Assembly - (1/2" - 2")	304 SS w/Vinyl Grip	304 SS w/Vinyl Grip	304 SS w/Vinyl Grip	304 SS w/Vinyl Grip
Lever Assembly - (3" - 8")	SS Wrench Head and Pipe	SS Wrench Head and Pipe	SS Wrench Head and Pipe	SS Wrench Head and Pipe
Grounding Spring	18-8 Stainless Steel	18-8 Stainless Steel	18-8 Stainless Steel	18-8 Stainless Steel
Studs	ASTM A193-B8M	ASTM A193-B7	ASTM A193-B8M	ASTM A193-B8M
Nuts	ASTM A194-Gr.8	ASTM A194 2H	ASTM A194-Gr.8	ASTM A194-Gr.8
Capscrews		ASTM A193-B7		

Corresponding Hardware Materials

External Designation	N	S	T
Seat Ring(s) (from bar, tube or pipe depending on availability)	ASTM B160-200 ASTM B161- 200	ASTM A269- 316 ASTM A276-316 or ASTM A312-316	ASTM B348-Gr 2
Internal Spring (1 or 2 seats)	Inconel X-750	ASTM A313-Type 316	Ti-6AL-4V
Internal Spring (3, 4, 5, 6, 7, 8, 9, A or Z seats)	Inconel X-750	Inconel X-750	Ti-6AL-4V
Packing Gland	316 Stainless Steel	316 Stainless Steel	316 Stainless Steel
Packing Jam Nut	18-8 Stainless Steel	18-8 Stainless Steel	18-8 Stainless Steel
Lever Assembly - (1/2" - 2")	304 SS w/Vinyl Grip	304 SS w/Vinyl Grip	304 SS w/Vinyl Grip
Lever Assembly - (3" - 8")	SS Wrench Head and Pipe	SS Wrench Head and Pipe	SS Wrench Head and Pipe
Grounding Spring	18-8 Stainless Steel	18-8 Stainless Steel	18-8 Stainless Steel
Studs	ASTM A193-B8M	ASTM A193-B8M	ASTM A193-B8M
Nuts	ASTM A194-Gr.8	ASTM A194-Gr.8	ASTM A194-Gr.8
Capscrews			

Top Entry Valves

Materials Selection

Trim (Internal) Material Selection

Material Designation	A	H	M
Description	Alloy 20	Hastelloy C	M35-1
Ball	ASTM A351-CN7M or ASTM B473-CB-3	ASTM A494-CW12MW or ASTM B574-C276	ASTM A494-M35-1 or ASTM B164-K400
Stem	ASTM B473-CB-3*	ASTM B574-C276	ASTM B164-K400

Material Designation	N	S	T
Description	Nickel (200)	Stainless Steel	Titanium
Ball	ASTM A494-CZ100 or ASTM B160-200	ASTM A351-CF8M or ASTM A479-316	ASTM B367-Gr C3 or ASTM B348-Gr 4-5
Stem	ASTM B160-200	ASTM A276-316*	ASTM B348-Gr 4-5

Seat & Seals Material Selection

Seat Designation	1	2	3	4
Seat	PTFE	RPTFE	RPTFE	Carbon Graphite
Seat O-ring	-	-	-	-
Stem Packing	PTFE	RPTFE	Grafoil®	Grafoil®
Bonnet Gasket	PTFE	RPTFE	Grafoil® (150-300) Spiral Wound Grafoil® (600)	Grafoil® (150-300) Spiral Wound Grafoil® (600)
Default Suffix	ZO1 (All Classes)	001 (All Classes)	BO1 (150-300) BS1 (600)	BO1 (150-300) BS1 (600)
Seat Designation	U	7	8	9
Seat	UHMWPE	API 607 - PTFE Fire Seat	Unfilled PEEK	CERAMIC (Seats & Ball)
Seat O-ring	-	PTFE	-	-
Stem Packing	Grafoil®	Grafoil®	Grafoil®	Grafoil®
Bonnet Gasket	Grafoil® (150-300) Spiral Wound Grafoil® (600)	Grafoil®	Grafoil® (150-300) Spiral Wound Grafoil® (600)	Grafoil® (150-300) Spiral Wound Grafoil® (600)
Default Suffix	BO1 (150-300) BS1 (600)	BO1	BO1 (150-300) BS1 (600)	BO1 (150-300) BS1 (600)

Seat Designation	5	D	6
Seat	55% Bronze, 5% Moly Filled PTFE	60% Stainless Filled PTFE	UHMWPE
Seat O-ring	-	-	-
Stem Packing	Grafoil®	Grafoil®	Grafoil®
Bonnet Gasket	Grafoil® (150-300) Spiral Wound Grafoil® (600)	Grafoil® (150-300) Spiral Wound Grafoil® (600)	Grafoil® (150-300) Spiral Wound Grafoil® (600)
Default Suffix	BO1 (150-300) BS1 (600)	BO1 (150-300) BS1 (600)	BO1 (150-300) BS1 (600)
Seat Designation	A	B	H
Seat	API 607 RPTFE Fire Seat	Carbon Reinforced PEEK	High Temp. Graphite
Seat O-ring	PTFE	-	-
Stem Packing	Grafoil®	Grafoil®	Grafoil®
Bonnet Gasket	Grafoil®	Grafoil® (150-300) Spiral Wound Grafoil® (600)	Grafoil® (150-300) Spiralwound Graphoil® (600)
Default Suffix	BO1	BO1 (150-300)	BO1 (150-300)

Top Entry Valves

Flanged Top Entry Ball Valves

Flanged Valve Dimensions

ANSI 150 Class Flanged Top Entry Valves

Size	A	B	C	D	E	F	G	H	J
1/2"	0.81	2.85	5.69	3.48	5.15	1.70	2.38	0.62	4
3/4"	0.81	2.31	4.62	3.54	5.15	1.76	2.75	0.62	4
1"	0.81	2.50	5.00	3.48	5.15	1.70	3.12	0.62	4
1-1/2"	1.17	3.25	6.50	4.17	5.94	1.96	3.87	0.62	4
2"	1.50	3.50	7.00	4.74	7.87	2.22	4.75	0.75	4
3"	2.25	4.00	8.00	6.60	19.12	2.93	6.00	0.75	4
4"	3.00	4.50	9.00	8.07	19.50	3.32	7.50	0.75	8*
6"***	4.50	7.75	15.50	10.59	36.00	4.97	9.50	0.87	8
8"***	6.00	9.00	18.00	14.39	47.00	6.51	11.75	0.87	8
10"***	7.50	10.50	21.00	15.50	NA	NA	14.25	1.00	12

* Top 2 holes in each flange are tapped 5/8-11 UNC-2B
 ** Gear Operator or Actuation Recommended.

ANSI 300 Class Flanged Top Entry Valves

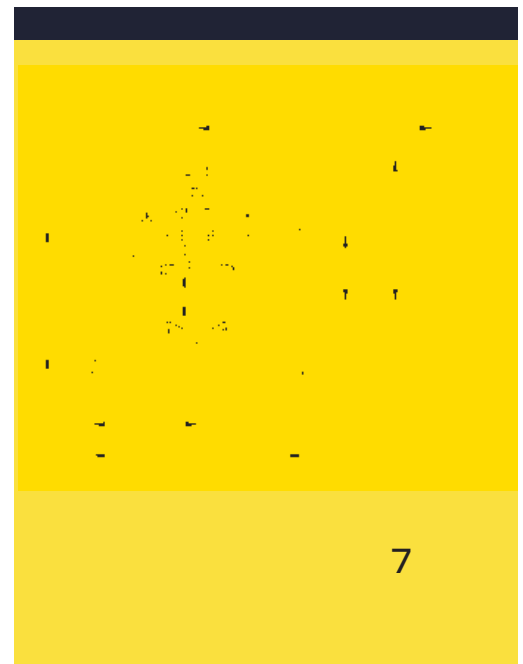
Size	A	B	C	D	E	F	G	H	J
1/2"	0.81	2.85	5.69	3.48	5.15	1.70	2.62	0.62	4
3/4"	0.81	3.00	6.00	3.63	5.15	1.86	3.25	0.75	4
1"	0.81	3.25	6.50	3.48	5.15	1.70	3.50	0.75	4
1 1/2"	1.17	3.75	7.50	4.17	5.94	1.96	4.50	0.88	4
2"	1.50	4.25	8.50	4.74	7.87	2.22	5.00	0.75	8
3"	2.25	5.56	11.13	6.60	19.12	2.93	6.63	0.88	8
4"	3.00	6.00	12.00	8.07	19.50	3.32	7.88	0.88	8
6" **	4.50	7.94	15.87	10.99	36.00	4.97	10.63	0.88	12
8" **	6.00	9.87	19.75	14.39	47.00	6.51	13.00	1.00	12
12"***	9.00	12.75	25.50	18.75	NA	NA	17.75	1.25	16*

* Top 6 holes in each flange are tapped 1 1/8-8UN-2B.
 ** Gear Operator or Actuation Recommended.

ANSI 600 Class Flanged Top Entry Valves

Size	A	B	C	D	E	F	G	H	J
1/2"	0.81	3.25	6.50	4.93	8.50	1.92	2.62	.62	4
3/4"	0.81	3.75	7.50	5.17	8.50	2.18	3.25	0.75	4
1"	0.81	4.25	8.50	5.23	8.50	2.21	3.50	0.75	4
1-1/2"	1.17	4.75	9.50	6.00	12.50	2.36	4.50	0.88	4
2"	1.50	5.75	11.50	7.06	14.75	2.97	5.00	0.75	8
3"	2.25	7.00	14.00	8.82	19.12	3.47	6.63	0.88	8
4" **	3.00	8.50	17.00	10.45	19.12	4.15	8.50	1.00	8
6" **	4.50	11.00	22.00	NA	NA	5.78	11.50	1.12	12

** Gear Operator or Actuation Recommended.



Top Entry Valves

Socket Weld & NPT Top Entry Valves



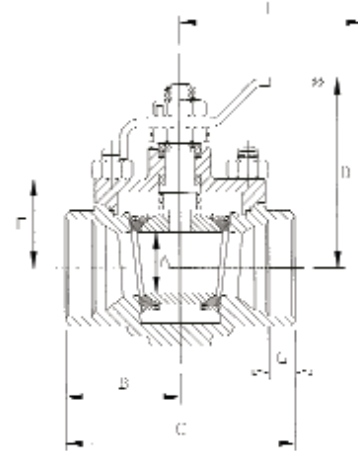
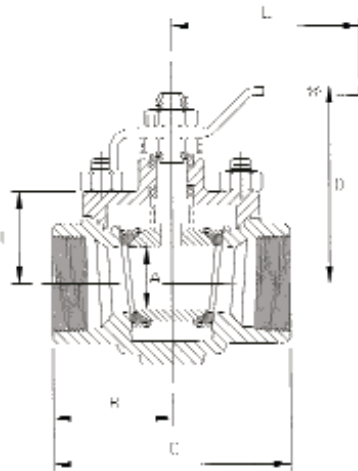
Socket Weld Valve Dimensions

ANSI 300 Class Socket Weld Top Entry Valves

Size	A	B	C	D	E	F	G
1/2"	0.81	2.15	4.29	3.48	5.15	1.70	0.38
3/4"	0.81	1.96	3.91	3.48	5.15	1.70	0.56
1"	0.81	1.96	3.91	3.48	5.15	1.70	0.50
1-1/2"	1.17	2.49	4.98	4.17	5.94	1.96	0.55
2"	1.50	2.86	5.72	4.74	7.87	2.22	0.62
3"	2.25	4.15	8.29	6.60	19.12	2.93	1.00

ANSI 600 Class Socket Weld Top Entry Valves

Size	A	B	C	D	E	F	G
1/2"	0.81	2.37	4.73	4.93	8.50	1.92	0.38
3/4"	0.81	2.18	4.35	4.93	8.50	1.92	0.56
1"	0.81	2.18	4.35	4.93	8.50	1.92	0.50
1-1/2"	1.17	2.62	5.23	5.83	12.50	2.14	0.55
2"	1.50	2.99	5.98	6.63	14.75	2.54	0.62



NPT Valve Dimensions

ANSI 300 Class NPT Top Entry Valves

Size	A	B	C	D	E	F
1/2"	0.81	2.15	4.29	3.48	5.15	1.70
3/4"	0.81	1.96	3.91	3.48	5.15	1.70
1"	0.81	1.96	3.91	3.48	5.15	1.70
1-1/2"	1.17	2.49	4.98	4.17	5.94	1.96
2"	1.50	2.86	5.72	4.74	7.87	2.22
3"	2.25	4.15	8.29	6.60	19.12	2.93

ANSI 600 Class NPT Top Entry Valves

Size	A	B	C	D	E	F
1/2"	0.81	2.37	4.73	4.93	8.50	1.92
3/4"	0.81	2.18	4.35	4.93	8.50	1.92
1"	0.81	2.18	4.35	4.93	8.50	1.92
1-1/2"	1.17	2.62	5.23	5.83	12.50	2.14
2"	1.50	2.99	5.98	6.63	14.75	2.54

Top Entry Valves

Butt weld Top Entry Valves

Butt weld Valve Dimensions

ANSI 300 Class Butt weld* Top Entry Valves

Size	A	B	C	D	E	F
1/2"	0.81	2.75	5.50	3.48	5.15	1.70
3/4"	0.81	3.00	6.00	3.48	5.15	1.70
1"	0.81	3.25	6.50	3.66	5.15	1.88
1-1/2"	1.17	3.75	7.50	4.22	5.94	2.01
2"	1.50	4.25	8.50	5.02	7.87	2.50
3"	2.25	5.56	11.13	6.60	19.12	2.93
4"	3.00	6.00	12.00	8.07	19.50	3.32
6"***	4.50	7.94	15.88	10.59	36.00	4.97
8"***	6.00	10.25	20.50	14.39	47.00	6.51

* Available in Schedule 10, 40 and 80 where appropriate.

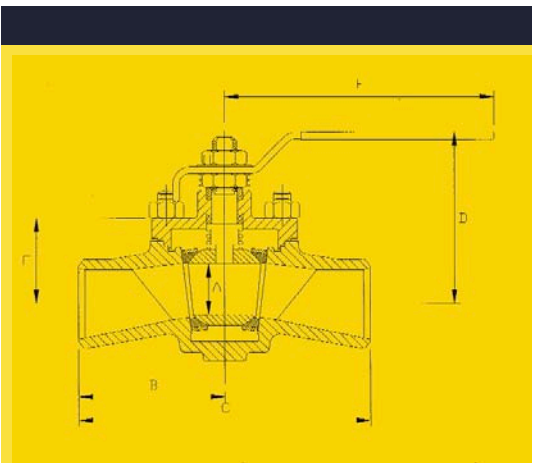
** Gear Operator or Actuation Recommended.

ANSI 600 Class Butt weld* Top Entry Valves

Size	A	B	C	D	E	F
1/2"	0.81	2.75	5.50	4.93	8.50	1.92
3/4"	0.81	3.75	7.50	5.17	8.50	2.16
1"	0.81	4.25	8.50	5.23	8.50	2.22
1 1/2"	1.17	4.75	9.50	6.07	12.50	2.38
2"	1.50	5.75	11.50	7.09	14.75	3.00
3"	2.25	7.00	14.00	8.84	19.50	NA
4" **	3.00	8.50	17.00	10.33	36.00	NA
6" **	4.50	11.00	22.00	NA	NA	NA

* Available in Schedule 40 and 80 where appropriate.

** Gear Operator or Actuation Recommended.



Top Entry Valves

Bonnet Dimensions for Actuator Mounting

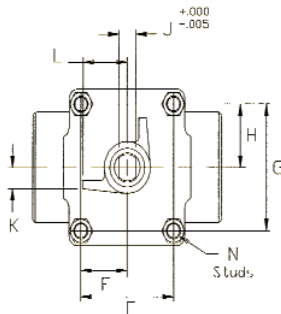


Fig.1

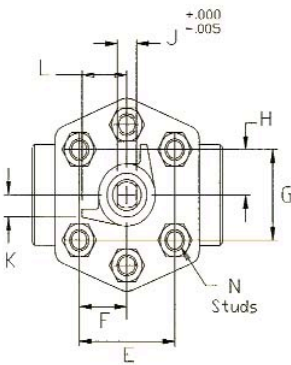


Fig.2

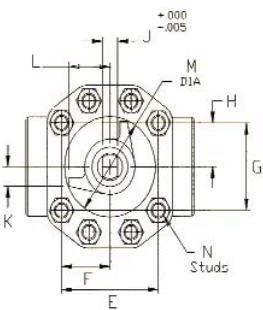


Fig.3

NOTE: Valves are shown in the Closed Position

ANSI 150/300 Class Socket Weld, NPT & Butt Weld Valves

Size	Fig. No.	A	B	C	D	E	F	G
1/2"	1	1.30	1.00	.77	.500	2.125	1.062	1.812
3/4"	1	1.30	1.00	.77	.500	2.125	1.062	1.812
1"	1	1.30	1.00	.77	.500	2.125	1.062	1.812
1-1/2"	1	2.04	1.68	.99	.625	2.812	1.406	2.250
2"	1	2.39	1.91	1.06	.750	3.375	1.687	2.750
3"	1	3.27	2.66	1.55	1.125	4.000	2.000	4.875
4"	3	4.66	4.11	2.24	1.500	6.375	3.188	3.750
6"	3	4.88	4.15	1.96	2.000	9.750	4.875	4.500
8"	3	5.77	4.79	2.56	2.36	12.06	6.031	7.375

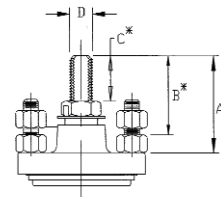
Size	Fig. No.	H	J	K	L	M	N
1/2"	1	.906	.292	.36	1.00	NA	5/16-18
3/4"	1	.906	.292	.36	1.00	NA	5/16-18
1"	1	.906	.292	.36	1.00	NA	5/16-18
1-1/2"	1	1.125	.417	.36	1.25	NA	3/8-16
2"	1	1.375	.482	.52	1.50	NA	1/2-13
3"	1	2.437	.730	.72	2.00	NA	5/8-11
4"	3	1.875	.970	NA	NA	6.00	9/16-12
6"	3	2.250	1.380	NA	NA	NA	3/4-10
8"	3	3.688	1.755	NA	NA	7.94	1-8

ANSI 600 Class Socket Weld, NPT, & Butt Weld Valves

Size	Fig. No.	A	B	C	D	E	F	G
1/2"	2	2.48	2.06	.76	.625	2.125	1.062	1.816
3/4"	2	2.48	2.06	.76	.625	2.125	1.062	1.816
1"	2	2.48	2.06	.76	.625	2.125	1.062	1.816
1-1/2"	3	3.48	3.06	1.03	.750	2.814	1.407	2.250
2"	3	3.95	3.47	1.03	.875	3.370	1.685	2.750

Size	Fig. No.	H	J	K	L	M	N
1/2"	2	.908	.412	.36	1.00	NA	7/16-18
3/4"	2	.908	.412	.36	1.00	NA	7/16-18
1"	2	.908	.412	.36	1.00	NA	7/16-18
1-1/2"	3	1.125	.475	.36	1.25	NA	7/16-14
2"	3	1.375	.535	.52	1.50	NA	1/2-13

* Stem rises as the packing is adjusted. Allow sufficient clearances.



STANDARD BONNET

Top Entry Valves

Class 150 Flanged Valves

	3/4"	1"	1-1/2"	2"	3"	4"	6"	8"	10"
A	4.06	4.43	5.75	6.24	7.18	8.19	14.25	16.75	19.75
B	2.03	2.21	2.88	3.12	3.59	4.09	7.13	8.38	9.88
C	1.75	1.75	1.75	2.25	3.50	4.00	4.00	5.00	7.00
D	0.88	0.88	0.88	1.13	1.75	2.00	2.00	2.50	3.50
E	0.70	0.62	1.37	1.48	2.32	3.33	4.22	5.28	6.50
F	3.06	3.00	4.00	4.61	6.20	7.98	9.85	12.28	15.50
G	2.36	2.38	2.63	3.13	3.88	4.63	5.63	7.00	9.00
H	0.77	0.77	0.99	1.06	1.55	2.24	1.96	2.56	2.90
J	5/16-18	5/16-18	5/16-18	5/16-18	3/8-16	7/16-14	7/16-14	1/2-13	3/4-10
K	0.48	0.48	0.47	0.47	0.56	0.66	0.50	0.66	1.25
L	0.292	0.292	0.417	0.482	0.730	0.970	1.380	1.755	2.030
M	0.500	0.500	0.625	0.750	1.125	1.500	2.000	2.360	2.933

Class 300 Flanged Valves

	3/4"	1"	1-1/2"	2"	3"	4"	6"	8"
A	5.31	5.75	6.63	7.56	9.88	10.69	14.31	18.06
B	2.66	2.88	3.31	3.78	4.94	5.34	7.15	9.03
C	1.75	1.75	1.75	2.25	3.50	4.00	4.00	5.00
D	0.88	0.88	0.88	1.13	1.75	2.00	2.00	2.50
E	0.70	0.62	0.81	1.23	1.95	2.83	3.47	4.53
F	3.15	3.00	4.00	4.61	6.20	7.98	9.85	12.28
G	2.45	2.38	3.19	3.38	4.25	5.13	6.38	7.75
H	0.77	0.77	0.99	1.06	1.55	2.24	1.96	2.56
J	5/16-18	5/16-18	5/16-18	5/16-18	3/8-16	7/16-14	7/16-14	1/2-13
K	0.48	0.48	0.47	0.47	0.56	0.66	0.50	0.66
L	0.292	0.292	0.417	0.482	0.730	0.970	1.380	1.755
M	0.500	0.500	0.625	0.750	1.125	1.500	2.000	2.360

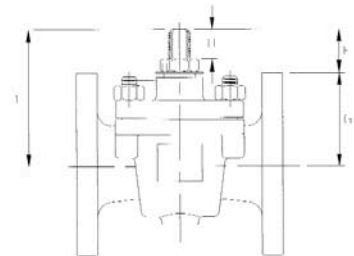
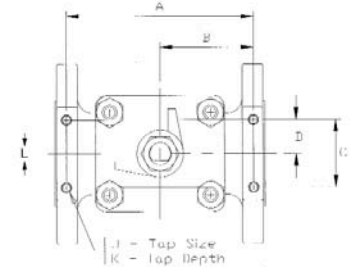
Class 600 Flanged Valves

	3/4"	1"	1-1/2"	2"	3"	4"	6"
A	6.32	7.25	8.06	9.94	12.25	15.00	19.62
B	3.16	3.63	4.03	4.97	6.13	7.50	9.81
C	2.38	2.38	2.75	3.50	4.75	5.50	7.00
D	1.19	1.19	1.38	1.75	2.38	2.75	3.50
E	2.21	2.15	2.83	3.54	4.18	4.88	4.97
F	4.65	4.71	6.08	6.92	8.43	10.38	12.09
G	2.44	2.56	3.25	3.38	4.25	5.50	7.12
H	0.76	0.76	1.27	1.03	1.54	2.25	1.34
J	3/8-16	3/8-16	1/2-13	1/2-13	1/2-13	1/2-13	3/4-10
K	0.47	0.47	0.66	0.66	0.66	0.75	1.00
L	0.412	0.412	0.475	0.535	0.730	0.970	1.380

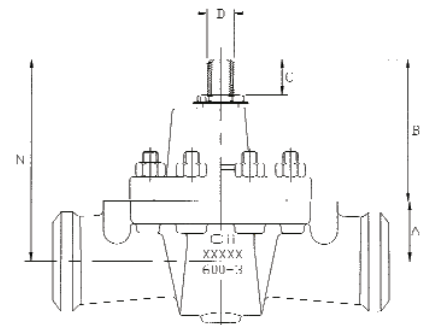
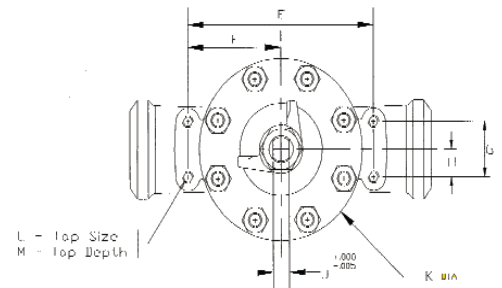
Class 600 Butt Weld

	3"	4"	6"
A	2.50	2.90	4.19
B	5.96	7.36	7.91
C	1.54	2.25	1.34
D	1.125	1.500	2.000
E	8.620	11.000	15.000
F	4.310	5.500	7.500
G	2.330	2.800	4.160
H	1.150	1.400	2.130
J	0.730	0.970	1.380
K	7.56	9.38	12.88
L	1/2-13	1/2-13	3/4-10
M	0.61	0.75	1.00
N	8.45	10.25	12.10

Dimensions for Actuator Pad Style Mounting



NOTE: Valves shown in the Closed position.



Top Entry Valves

Flanged Top Entry Full Port Dimensional Data

ANSI 150 Class Full Port Flanged Top Entry Valves

Size	A	B	C	D	E	F	G	H	J
1"	1.17	3.50	7.00	4.27	5.94	2.05	3.12	.62	4
1-1/2"	1.50	4.37	8.75	5.05	7.87	2.51	3.87	.62	4
2"	2.25	5.25	10.50	7.61	19.12	3.23	4.75	.62	4
3"	3.00	6.75	13.50	9.33	19.50	3.80	6.00	.75	4
4"	4.50	8.50	17.00	12.32	36.00	5.39	7.50	.75	8
6"	6.00	10.75	21.50	15.57	43.00	6.67	9.50	.87	8
8"	8.00	12.25	24.50	18.32	NA	9.39	11.75	.87	8*

* Top 2 Holes in each flange are tapped 3/4-10 UNC-2B

ANSI 300 Class Full Port Flanged Top Entry Valves

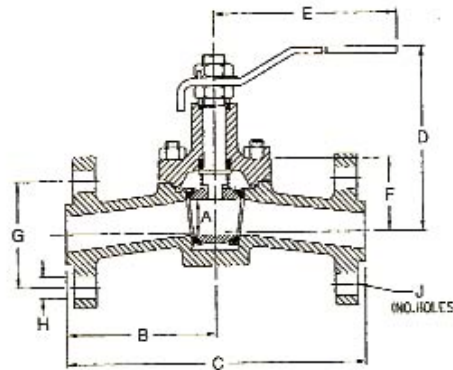
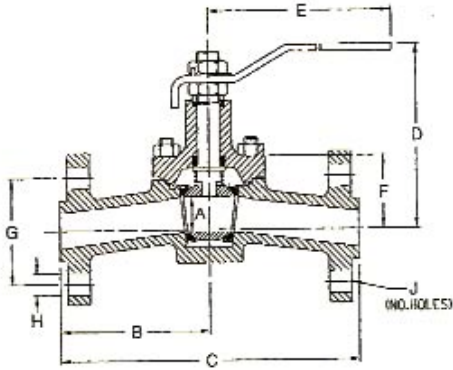
Size	A	B	C	D	E	F	G	H	J
1"	1.17	3.75	7.50	4.27	5.94	2.08	3.50	.75	4
1-1/2"	1.50	4.75	9.50	5.05	7.87	2.55	4.50	.87	4
2"	2.25	5.56	11.13	7.61	19.12	3.27	5.00	.75	8
3"	3.00	7.62	15.25	9.33	19.50	3.91	6.63	.87	8
4"	4.50	9.00	18.00	12.32	36.00	5.45	7.88	.87	8
6"	6.00	11.00	22.00	15.57	43.00	6.70	10.63	.87	12
8"	8.00	13.50	27.00	18.32	NA	9.54	13.00	1.00	12*

* Top 2 Holes in each flange are tapped 7/8-9 UNC-2B

ANSI 600 Class Full Port Flanged Top Entry Valves

Size	A	B	C	D	E	F	G	H	J
1"	1.17	5.00	10.00	6.06	12.50	2.40	3.50	.75	4
1-1/2"	1.50	6.25	12.50	7.15	14.75	3.06	4.50	.87	4
2"	2.25	6.50	13.00	9.76	19.12	3.70	5.00	.75	8
3"	3.00	8.75	17.50	11.45	19.50	4.48	6.63	.87	8
4"	4.50	10.00	20.00	12.44	NA	6.13	8.50	1.00	8
6"	6.00	13.00	26.00	15.28	NA	7.50	11.50	1.12	12
8"	8.00	15.62	31.25	18.58	NA	11.42	13.75	1.25	12*

* Top 2 Holes in each flange are tapped 1-1/8 UN-2B



Top Entry Valves

Flanged Top Entry Full Port Actuator Mounting Data

ANSI 150 Class Full Port Flanged Top Entry Valves							
Size	A	B	C	D	E	EE	F
1"	6.44	3.22	1.75	.88	1.71	NA	4.09
1-1/2"	8.06	4.03	1.75	.88	2.27	NA	4.90
2"	9.68	4.84	2.25	1.13	3.37	NA	6.50
3"	12.48	6.24	3.50	1.75	4.58	NA	8.46
4"	15.81	7.91	4.00	2.00	5.23	NA	10.27
6"	20.25	10.13	4.00	2.00	6.13	2.73	12.29
8"	NA	NA	NA	NA	NA	5.77	NA

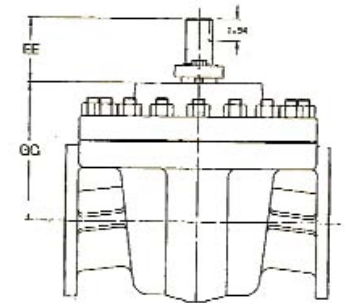
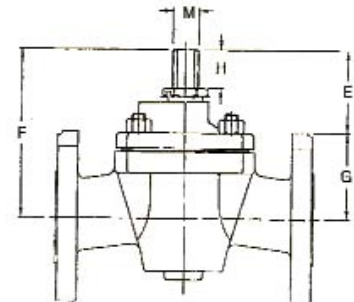
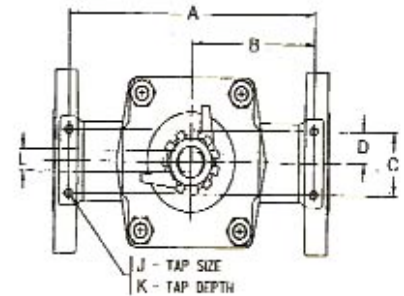
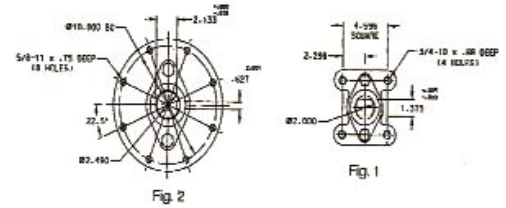
Size	G	GG	H	J	K	L	M
1"	2.63	NA	1.06	5/16-18	.47	.482	.750
1-1/2"	2.63	NA	1.06	5/16-18	.47	.482	.750
2"	3.13	NA	1.55	5/16-18	.47	.730	1.125
3"	3.88	NA	2.24	3/8-16	.56	.970	1.500
4"	5.04	NA	1.96	7/16-14	.66	1.380	2.000
6"	6.16	9.56	1.00	7/16-14	.66	Fig. 1	Fig. 1
8"	NA	12.37	NA	NA	NA	Fig. 2	Fig. 2

ANSI 300 Class Full Port Flanged Top Entry Valves							
Size	A	B	C	D	E	EE	F
1"	6.69	3.35	1.75	.88	1.74	NA	4.12
1-1/2"	8.63	4.31	1.75	.88	1.75	NA	4.94
2"	9.90	4.95	2.25	1.13	3.16	NA	6.54
3"	13.68	6.84	3.50	1.75	4.32	NA	8.57
4"	16.50	8.25	4.00	2.00	5.20	NA	10.33
6"	20.38	10.19	4.00	2.00	5.41	2.73	12.32
8"	NA	NA	NA	NA	NA	5.77	NA

Size	G	GG	H	J	K	L	M
1"	2.38	NA	.99	5/16-18	.48	.417	.625
1-1/2"	3.19	NA	1.06	5/16-18	.47	.482	.750
2"	3.38	NA	1.55	5/16-18	.47	.730	1.125
3"	4.25	NA	2.24	3/8-16	.56	.970	1.500
4"	5.13	NA	1.96	7/16-14	.66	1.380	2.000
6"	6.91	9.59	1.00	7/16-14	.66	Fig. 1	Fig. 1
8"	NA	12.52	NA	NA	NA	Fig. 2	Fig. 2

ANSI 600 Class Full Port Flanged Top Entry Valves							
Size	A	B	C	D	E	EE	F
1"	8.75	4.38	2.38	1.19	3.56	NA	6.12
1-1/2"	11.06	5.53	2.75	1.38	3.75	NA	7.00
2"	11.38	5.69	3.50	1.75	5.20	NA	8.66
3"	15.56	7.78	4.75	2.38	6.45	NA	10.70
4"	17.75	8.88	5.50	2.75	6.94	NA	12.44
6"	23.44	11.72	7.00	3.50	8.21	NA	15.33
8"	NA	NA	NA	NA	NA	5.77	NA

Size	G	GG	H	J	K	L	M
1"	2.56	NA	1.27	3/8-16	.47	.475	.750
1-1/2"	3.25	NA	1.03	1/2-13	.66	.535	.875
2"	3.46	NA	1.54	1/2-13	.66	.730	1.125
3"	4.25	NA	2.25	1/2-13	.66	.970	1.500
4"	5.50	NA	1.34	1/2-13	.75	1.380	2.000
6"	7.12	NA	2.56	3/4-10	1.00	1.380	2.360
8"	NA	12.78	NA	NA	NA	Fig. 2	Fig. 2



Top Entry Valves

Top Entry Valve Operating Torques

Torque Constants for Top Entry Ball Valves										
Seat Options	Valve Size Reg. Port (In.)	Valve Size Full Port (In.)	Differential Pressures (psig)						(In.-Lbs.)	
			100	285	500	740	1480	LSST*	Grapholi® Addar	
1*** 7***	1/2 thru 1	1/2 thru 3/4	85	110	140	180	290	170	68	
	1-1/2	1	205	260	330	415	660	410	96	
2 A	2	1-1/2	350	430	550	735	1,200	700	127	
	3	2	950	1,250	1,650	2,000	3,200	1,900	245	
3 C	4	3	2,000	2,500	3,300	4,100	6,500	4,000	399	
	6"	4"	5,300	6,700	8,200	11,400	18,000	10,600	661	
5 D	8"	6"	11,000	14,000	18,500	25,000	36,000	22,000	900	
	10"	8"	18,500	22,000	30,000	40,000	62,000	37,000	1,326	
	1/2 thru 1	1/2 thru 3/4	115	160	210	260	450	230	68	
4	1-1/2	1	270	370	480	590	1,000	540	96	
	2	1-1/2	475	650	860	1,050	1,750	950	127	
8 9'	3	2	1,250	1,850	2,400	2,950	4,900	2,500	245	
	4"	3"	2,700	3,700	4,900	5,900	10,000	5,400	399	
B	6"	4"	7,410	10,100	13,400	16,400	25,300	14,800	661	
	8"	6"	15,000	20,000	26,000	34,500	56,000	30,000	900	
	10"	8"	25,000	32,000	45,000	60,000	96,000	50,000	1,326	

*LSST - Long Stand Still Torque
 **Rated torque for #6 and U seat add 30%
 ***Rated torque for #1 and #7 PTFE seats can be reduced by 30%
 'Rated torque for #9 ceramic seat is to be increased by 10%
 †Gear operator or actuation recommended

There are several elements involved in developing an appropriate "in-service" valve operating torque. Selection of the basic valve torque constant, shown on this page establishes the nominal valve torque based on the valve size, specified valve seat and the approximate working pressure.

Armed with the nominal valve operating torque, adjustments are now made to account for individual service conditions. These factors are selected from the table at the lower left. They are additive, or combined in series and used to arrive at the "in-service" torque.

Ball Valve TORQUE ADJUSTMENT FACTORS

PROVISION	CONDITION	FACTOR
TYPE OF OPERATION	ON/OFF SERVICE	0
	MODULATING SERVICE	0.25
PROCESS MEDIA	LIQUID, CLEAN PARTICLE FREE	0
	LIQUID, DIRTY, SLURRY, RAW WATER	0.3 TO 0.8
	LIQUID, BLACK LIQUOR, LIME SLURRY	0.8
	LIQUID, OIL, LUBRICATING	0
	LIQUID, VISCOUS, MOLASSES	0.3
	GAS, CLEAN & WET	0
	GAS, DRY	0.3 TO 0.5
	GAS, DIRTY, AIR SLURRY, NATURAL GAS	0.5 TO 1
	OXYGEN, CHLORINE	0.5
SUPERHEATED STEAM, SATURATED STEAM	Refer to Process Temp.	
FREQUENCY OF OPERATION**	ONCE PER DAY OR MORE	0
	ONCE PER WEEK	0.2
	ONCE PER MONTH	0.5
	LESS THAN ONCE PER MONTH (LSST)	1
PROCESS TEMPERATURE	APPLICATIONS ABOVE 225 DEG F	0.50
	APPLICATIONS BELOW -20 DEG F	0.25
VALVE SEATING MATERIAL	PTFE	-0.3
	*MULTIFILL	0
	*PEEK	Contact Factory
	*UHMWPE	Contact Factory
OPTION	-49 ASSEMBLED DRY	0.3
	-57 OXYGEN CLEANED	0.3
	-67 CLEANED FOR INDUSTRIAL GAS	0.3
	-90 DOUBLE PACKED EXTENDED BONNET	0.2
CUSTOMER SPECIFIED	PRESCRIBED SAFETY FACTOR	0.2 TO 2

* Do not consider when calculating Top Entry Valve Torques. Apply all applicable Torque Adjustment Factors to the Valve Torque Constant to determine the in-service torque requirement.

** If accounting for LSST disregard frequency of operation.

Example:

Selected Valve: 3" 150 w/#3 seat
(Model: CS-B30-BO1)

Torque Constant: 1250 in-lbs

Service Factors:

ON/OFF Service 0.0
 Clean Dry Air 0.3
 Weekly Operation 0.2
 Net Service Factor 0.5

"In Service" Valve Torque:

$$1250 \times (1 + 0.5) = 1875 \text{ in-lbs}$$

This is the valve torque used to select an actuator.

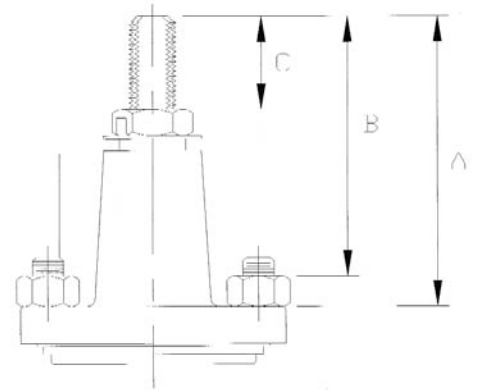
Extended Bonnets

Features:

- Extended bonnets for Apollo® Top Entry Ball Valves are available for sizes 1/2" through 8" in classes 150 and 300. Extended bonnets are standard for all class 600 valves.
- These bonnets provide excellent performance in high temperature or semi cryogenic applications.
- This bonnet design places the stem seals further away from the process flow thereby maintaining temperatures closer to ambient.
- Insulation can be applied to the bonnet reducing the chance of disturbance as would be caused by a stem extension. If and when stem leakage occurs it can be immediately observed and corrective action taken without insulation removal.
- A valuable feature of the Extended Bonnet is that it is field retrofitable. In addition to being able to order valves with several bonnet styles direct from the factory, kits are available that are pre-assembled with the stem, bonnet, packings, glands and jam nut installed and properly torqued for dependable performance. Contact the factory for kit part numbers for any specific valve or application.

Materials of Construction:

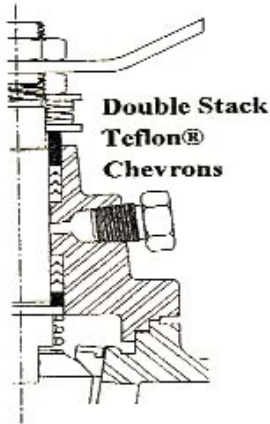
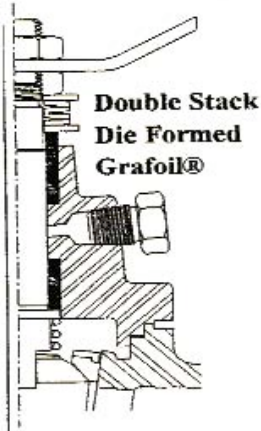
Extended bonnets are available in the same broad selection of materials of construction as those illustrated on page 5 for the bonnet, stem, stem packings, packing gland, nuts and body seals.



Class 150 & 300 Extended Bonnets "EB"			
Size	A	B	C
3/4"	2.55	2.25	0.77
1"	2.55	2.25	0.77
1-1/2"	3.54	3.18	0.99
2"	4.14	3.66	1.06
3"	5.27	4.66	1.55
4"	6.66	6.11	2.24
6"	6.88	6.15	1.96
8"	7.77	6.79	2.56

Top Entry Valves

Fugitive Emissions Stem Seals



Following a detailed testing program it has been found that the double stack of RPTFE Chevron style packings clearly outperformed the other contenders evaluated. In applications where this material is acceptable, it would be the hands-down choice. However, when resistance to high temperatures is a must, such as in a valve requiring fire-safe performance, then the Grafoil® packings must be considered.

With any of the styles of grafoil packings tested it is reasonable to expect that over the anticipated life of the packing (100,000 cycles) two (2) packing adjustments will be required. From the testing, the first adjustment could be anticipated around the 20,000 cycle point and the second some time

after the 60,000 cycle mark. The primary offering in Grafoil® fugitive emissions style packings for Apollo® Top Entry Ball Valves will be the double stack arrangement provided by Garlock® under the trade name EVSP.

The results are presented here in 5000 cycle increments. Measurements were taken more frequently and those other data points showed no evidence of any trends in the growth of a leak from a minor status to one requiring adjustment. Through process monitoring, statistical data can be used to establish preventive maintenance schedules showing packing adjustment intervals.

Leakage Rate in PPM Methane		
Cycle Count	Double Stack RPTFE Chevrons	Double Stack Grafoil®
5000	0	0
10,000	0	0
15,000	0	0
20,000	4	1
25,000	3	42*
30,000	4	0
35,000	18	0
40,000	14	0
45,000	13	2
50,000	3	3
55,000	4	3
60,000	8	3
65,000	14	4
70,000	30	92*
75,000	24	0
80,000	24	0
85,000	23	2
90,000	52*	11
95,000	0	0
100,000	0	0

*Indicates a packing adjustment was made.
 Grafoil® is a registered trademark of Union Carbide.
 Garlock® is a registered trademark of Coltec Industries.

Fugitive Emissions Bonnet Dimension

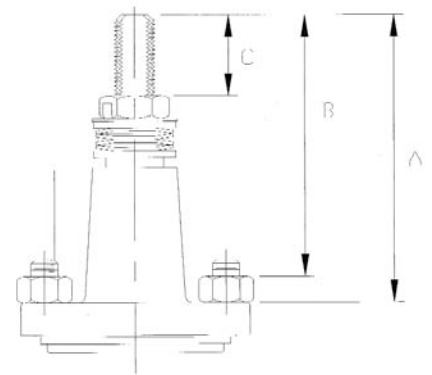
Features:

- Two types of the Fugitive Emissions Bonnet are available. The first type intended for manual operation is not live loaded. Testing has shown that live loading only becomes necessary in high cycle applications. This leads to the second type, the live loaded version. This second type not only is more appropriate for unattended automated operations and high cycle applications, it is also well suited for applications involving thermal cycling.
- Two styles of packings are available for the Fugitive Emissions bonnet. The primary offering is a double stack of RPTFE Chevrons. The second option is a specially contoured double stack of "Die Formed" graphoil rings.
- The lower, primary packing stack is pressure activated as well as mechanically loaded. The upper packing stack acts as back-up seals in the case of primary seal failure. A purge port is available between the two stacks for the purpose of detecting primary seal leakage.
- One of the most valuable features of the Fugitive Emissions Bonnet is that it is field retrofitable to existing installations. In addition to being able to order Top Entry valves with any of three bonnet styles direct from the factory, kits are available that are pre-assembled with the stem, bonnet, packings, glands and jam nut installed and properly torqued for dependable performance. In the case where the service or regulations change and a design upgrade is required, the Top Entry Ball valve is designed to accommodate these changes. Contact the factory for kit part numbers for any specific valve or application.

Materials of Construction:

Extended bonnets are available in the same materials of construction as those illustrated on page 5 and 6 for the bonnet, stem, stem packings, packing gland, nuts and body seals.

Fugitive Emissions Bonnet Dimensions



Class 150 & 300 Valves "FG" and "FL" Options FUGITIVE EMISSIONS BONNET

	3/4"	1"	1-1/2"	2"	3"	4"	6"
A	2.55	2.55	3.54	4.14	5.27	6.66	6.88
B	2.25	2.25	3.18	3.66	4.66	6.11	6.15
C	0.77	0.77	0.99	1.06	1.55	2.24	1.96

Class 150 & 300 Valves "FC" and "FP" Options LIVE LOADED FUGITIVE EMISSIONS BONNET

	3/4"	1"	1-1/2"	2"	3"	4"	6"
A	3.41	3.41	3.90	5.20	6.31	7.37	8.03
B	3.11	3.11	3.54	4.72	5.70	6.80	7.30
C	0.98	0.98	0.85	1.35	1.47	2.27	1.30

Class 600 Valves "FC" and "FP" Options LIVE LOADED FUGITIVE EMISSIONS BONNET

	3/4"	1"	1-1/2"	2"
A	3.27	3.27	4.54	5.03
B	2.85	2.85	4.12	4.55
C	0.99	0.99	1.04	1.10

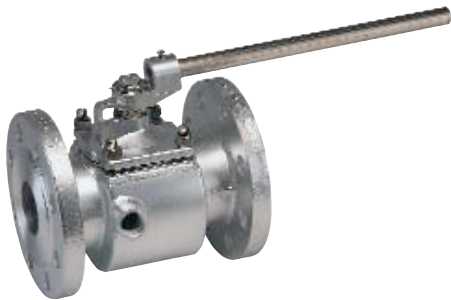
Top Entry Valves

Steam Jacketed Top Entry Valves



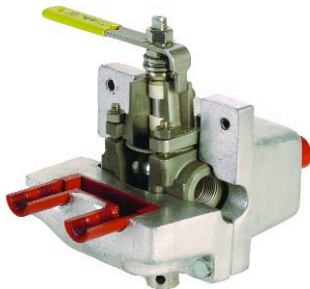
Conbraco's Apollo® Top Entry Ball Valves are ideally suited for jacketed applications. The top entry concept allows for continued access to stem packings and valve internals for ease of maintenance without disturbing the jacket itself or removing the valve from the pipeline.

Partial jacketing (Option "PJ") may be used on standard valves. Partial jacketing is applied just to the center section of the valve and does not incorporate the neck area or flanges of the valve. It is generally specified to allow the use of standard flanges and retain conventional flange bolting. Fully jacketed, standard flange valves have modified flanges with blind tapped stud holes in place of the ordinary through holes.



Welded full jacketing may be applied to valves with standard flanges (Option "FS") or oversize flanges (Option "FO"). Valves and jacketing can be supplied in a variety of materials. Common materials are stainless valves with stainless jackets, but exotic combinations such as Alloy 20 valves with carbon steel flanges and carbon steel jacketing have been supplied to meet the performance and cost requirements for specific applications.

Clamp-on jacketing (Option "CJ") offers flexibility not available in the other configurations. Clamp-on jacketing can be applied to valves already in service, or can be removed and reinstalled on a replacement valve or another similar valve in another application. Clamp-on jackets can be supplied as a weldment or in cast aluminum. A heat transfer compound can be applied between the clamp-on jacket and valve to improve its efficiency.



Combining these jacketed valves with extended bonnets for safe convenient operation, and adding carbon graphite seats or ceramic balls and seats enables the valve to handle a broad range of viscous materials and temperatures.

Top Entry Valves

Seat Performance Data

#1 (PTFE)

General application seat material, exhibiting lowest operating torque and excellent resistance to chemical attack. (Figure 1) Reference chart 1

#2 (RPTFE)

Most commonly specified seat material, and used as the basis for published torque values. Maintains the excellent chemical resistance of unfilled Teflon® (PTFE) with increased resistance to wear and abrasion resulting in longer life. (Figure 1) Reference Chart 2

#3 (RPTFE w/Inner Ring)

Features a metallic inner ring to improve abrasion resistance particularly in high solids or throttling applications. Maintains the other features of the #2 seat. (Figure 2) Reference Chart 2

#7 (API 607 Cert. PTFE) to 450°F

This seat design has been successfully tested to the requirements of API 607, fourth edition. The PTFE seat is fully confined by a metallic seat holder which provides a secondary seal in the event of the loss of the primary PTFE seal due to a fire. As the seat seal material is PTFE, chemical and torque characteristics will be the same as in the #1 seats. (Figure 3) Reference Chart 1

#A (API 607 Cert. RPTFE) to 500°F

This seat design has been successfully tested to the requirements of API 607, fourth edition. The RPTFE seat is fully confined by a metallic seat holder which provides a secondary seal in the event of the loss of the primary PTFE seal due to a fire. The seat holder can perform the same function as the inner ring found in the #3 and #5 seats making this design appropriate for abrasive and throttling applications. As the seat seal material is RPTFE, chemical and torque characteristics will be the same as in the #2 and #3 seats. (Figure 3) Reference Chart 2

#5 (55%Bronze/5%Moly BRTFE)

Specifically intended for steam applications. Also applicable to abrasive and throttling applications because of the heavy loading of reinforcing materials and the presence of the inner ring. However, chemical compatibility may be a limiting factor in the application of this seat. (Figure 2) Reference Chart 3

“D” (60% Stainless Steel SRTFE)

Intended for abrasive and throttling applications because of the heavy loading of reinforcing materials and the completely confined seat. (Figure 2) Reference Chart 2

#6 (UHMWPE)

Ultra High Molecular Weight Polyethylene offers good abrasion resistance making it suitable for use in high solids or slurry applications. These seats are completely confined by a metallic seatholder enhancing their performance in abrasive services. This seat is frequently specified in services where fluorine off-gassing in even the slightest amounts is objectionable. Examples of these services are food, tobacco processing, and nuclear services. (Figure 2) Reference Chart 4

Figure 1

Insert

Seat Ring



Figure 2

Insert

Seat Ring



Figure 3

Insert

Seat Holder

O-Rings



Figure 4

Seal



Seat Performance Data (Cont'd)

“U” (UHMWPE)

Exhibits the same characteristics as the #6 seat with the exception that it utilizes the inner seat ring to enhance performance in abrasive services. UHMWPE should be used with caution in the presence of solvents, and the operating torque can be expected to be 30% higher than that of the teflon based seat materials. **(Figure 1)** Reference Chart 4

#8 (PEEK)

PEEK (PolyEtherEtherKetone) offers a high strength alternative to RPTFE, resistant to creep and cold flow. This seat offers good abrasion resistance. Higher in cost, this material offers similar chemical resistance to PTFE but should be checked on application. Operating torque tend to be 40% higher than RPTFE. Ball stop recommended. **(Figure 2)** Reference Chart 5

#B (Carbon Reinforced, PEEK)

Carbon Reinforced PEEK provides improved abrasion resistance when compared to the unfilled variety. Higher in cost, this material offers a broader temperature range than RPTFE with similar chemical resistance but should be checked on application. Operating torque tends to be 40% higher than RPTFE. Ball stop recommended. **(Figure 2)** Reference Chart 5

#4 (Carbon Graphite)

Designed for high temperature applications. A ball stop is required in applications above 500°F. Maximum service temperature is limited to 750°F in oxidizing applications. This seat like all rigid seat materials does not necessarily provide “bubble tight” shut-off. Most test standards have allowable leakage rates or list “classes” of shut-off for this type of seat. Be aware of the system design requirements when specifying this or any rigid seat. Ball stop recommended. **(Figure 1)** Reference Chart 6

#H (High Temperature Graphite)

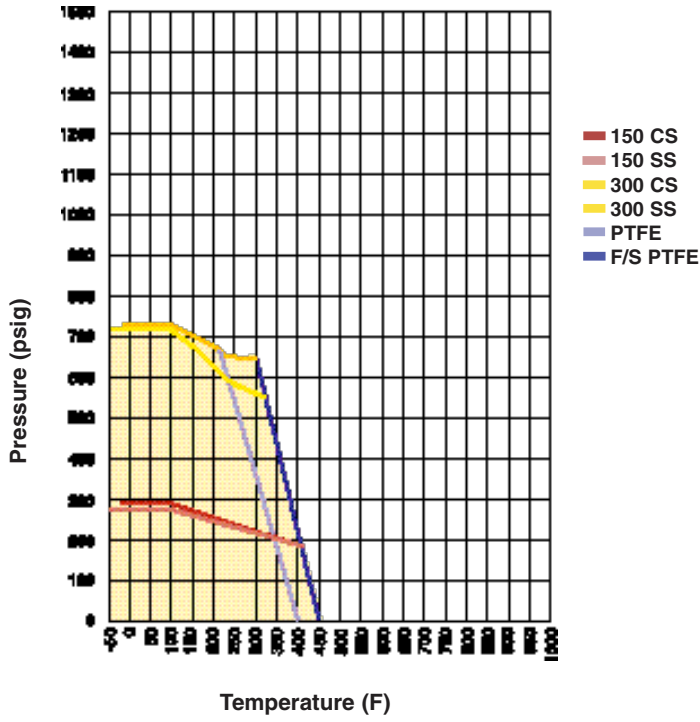
Designed for very high temperature applications. A ball stop is required in applications above 500°F. Maximum service temperature is limited to 1000°F. This seat like other rigid seat materials does not provide “bubble tight” shut-off. This seat is not as abrasion resistant as the #4 version. Be aware of the system design requirements when specifying this or any rigid seat. Ball stop recommended. **(Figure 1)** Reference Chart 6

#9 (Ceramic)

Working in conjunction with a ceramic ball, this seat outperforms all other materials in throttling and abrasive applications. It possesses excellent chemical resistance. Cost is very high, and unless experience dictates its use, other alternatives should be evaluated first. A ball stop is recommended for all applications. This seat like all rigid seat materials does not necessarily provide “bubble tight” shut-off. Most test standards have allowable leakage rates or list “classes” of shut-off for this type of seat. Be aware of the system design requirements when specifying this or any rigid seat. **(Figure 4)** Reference Chart 7

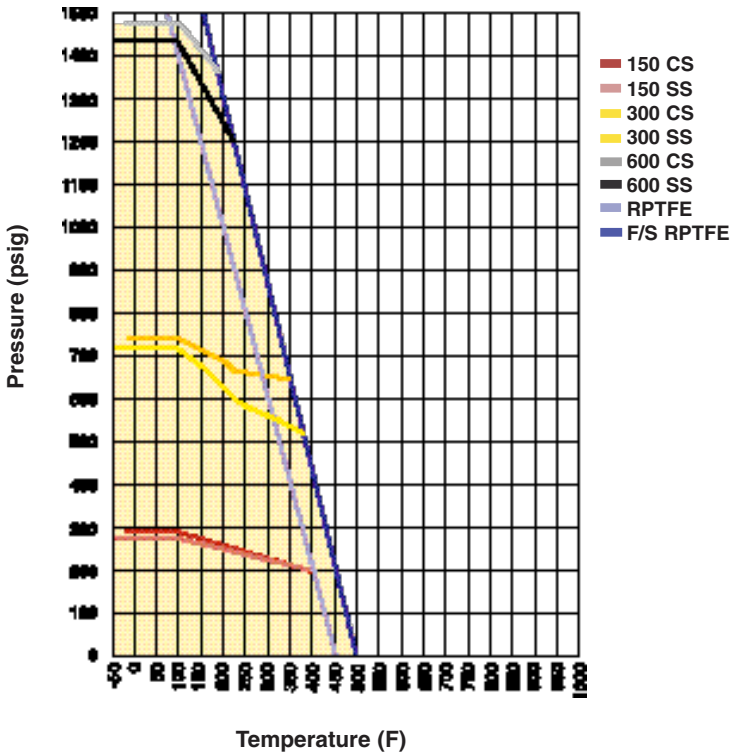
Top Entry Valves

Reference Charts



Reference Chart 1

PTFE Seats P-T Ratings



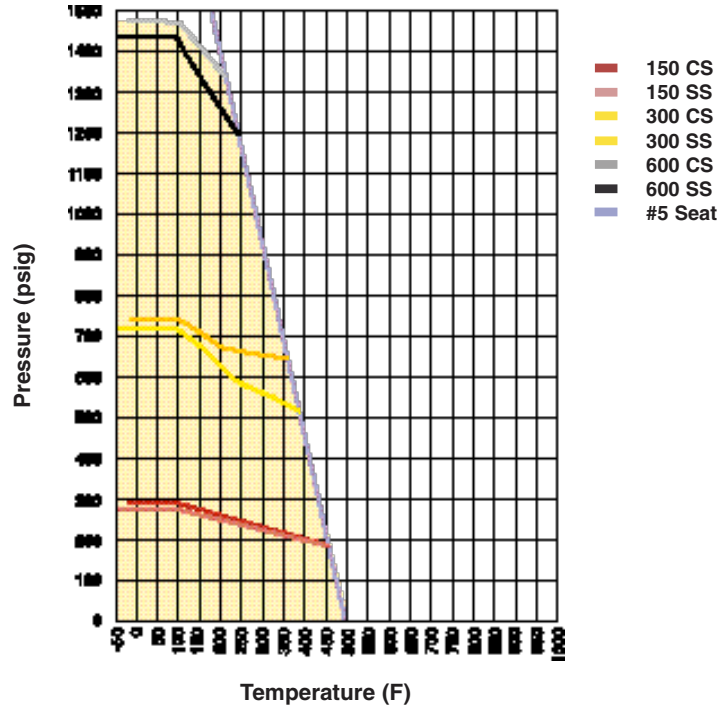
Reference Chart 2

RPTFE Seats P-T Ratings

Reference Charts

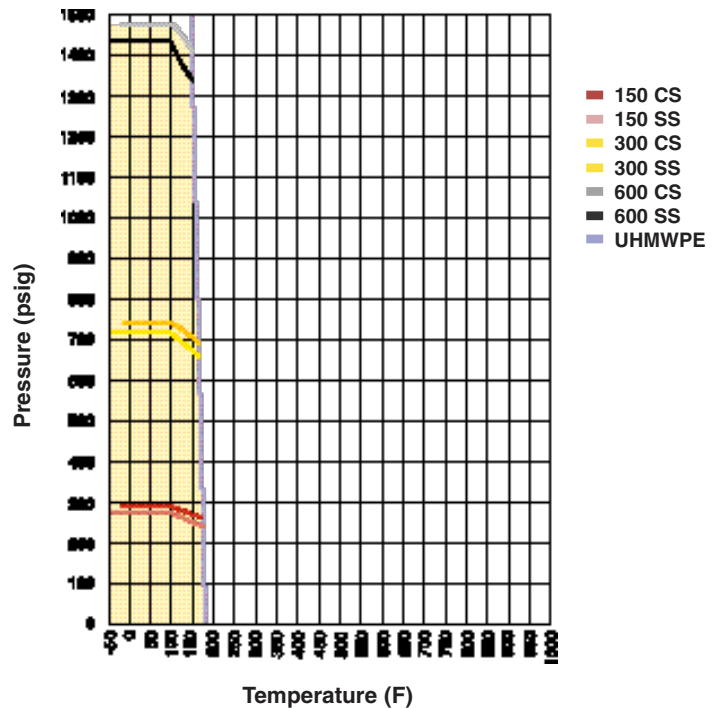
Reference Chart 3

#5 Seat P-T Ratings

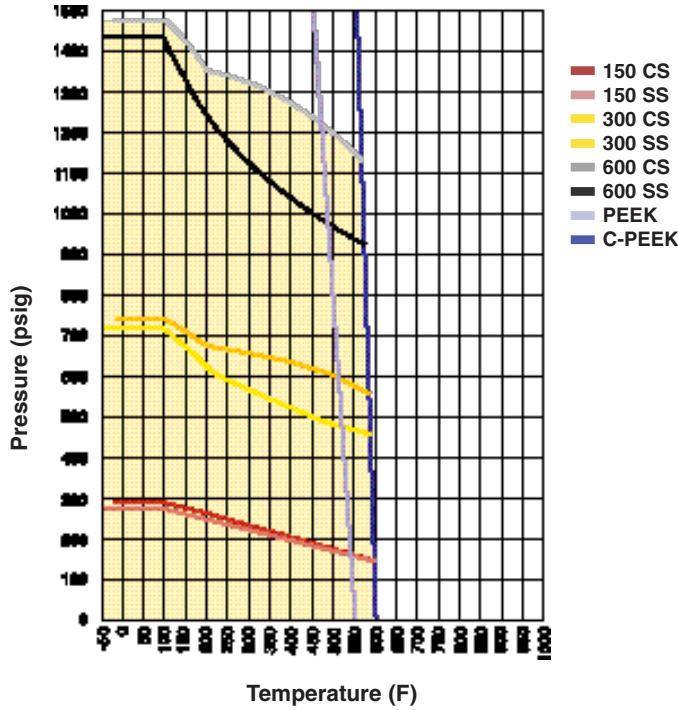


Reference Chart 4

UHMWPE Seats P-T Ratings

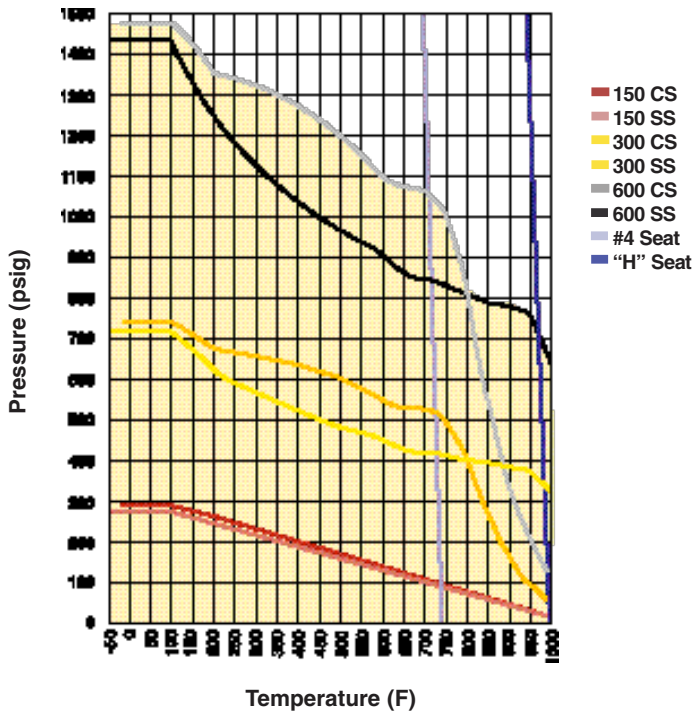


Reference Charts



Reference Chart 5

Peek Seats
P-T Ratings



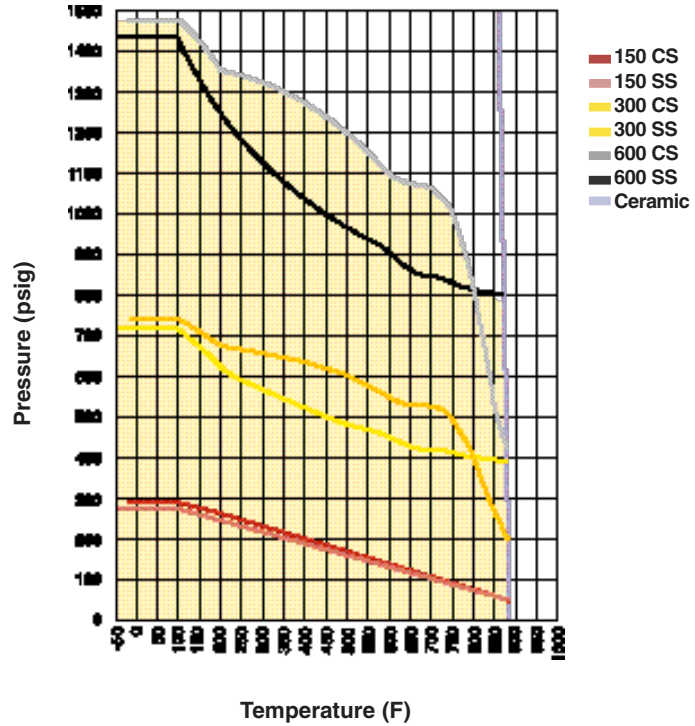
Reference Chart 6

Carbon-Graphite
Seats
P-T Ratings

Reference Charts

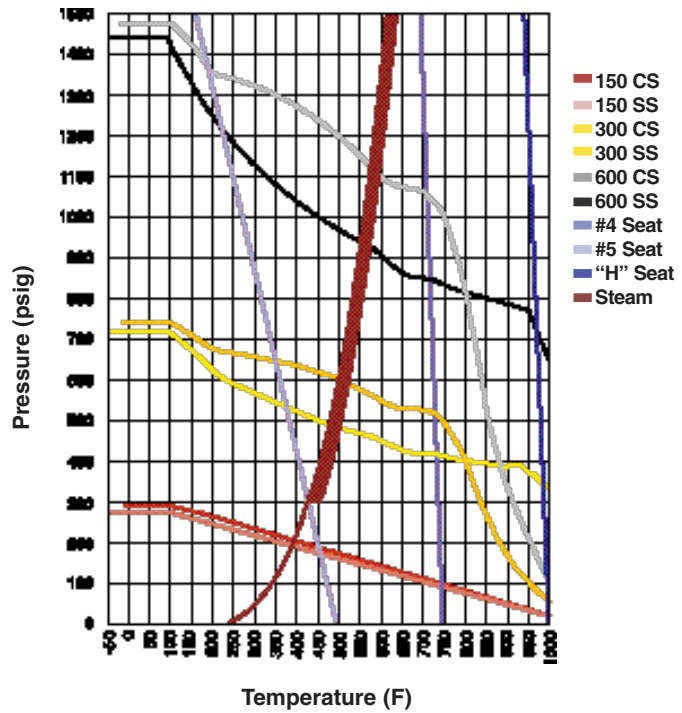
Reference Chart 7

Ceramic Seats P-T Ratings



Reference Chart 8

Steam Rated Seats P-T Ratings



Top Entry Valves

Apollo® Top Entry Full Port Valve Flow Coefficients

Valve Size	150 Class Flanged	300 Class Flanged	600 Class Flanged
1"	95	90	85
1-1/2"	230	225	200
2"	435	420	400
3"	1050	1000	950
4"	1950	1900	1800
6"	4800	4300	4300
8"	9100	8700	8000

Apollo® Top Entry Valve Flow Coefficients

Valve Size	150 Class Flanged End	300 Class Flanged End	300 Class Butt weld End	300 Class Socket Weld	300 Class NPT	600 Class Flanged End	600 Class Butt weld End	600 Class Socket Weld	600 Class NPT
1/2"				20	20			20	20
3/4"	50	50	50	30	30	50	50	30	30
1"	60	60	60	40	40	60	60	40	40
1-1/2"	100	100	100	70	70	100	100	70	70
2"	180	180	180	120	120	190	190	120	120
3"	330	400	400	260	260	410	410	260	260
4"	600	720	720				780	780	
6"	1,500	1,500	1,500				1,700	1,700	
8"	2,500	2,500					3,100		
10"	3,800	3,800					4,900		

The table above presents the Flow Coefficients (Cv) for Apollo® Top Entry Ball Valves. This number represents the flow (in gallons per minute of water) required to produce a 1 psig pressure drop across the valve. The data shown is for a valve in the full open position. Data for various degrees of open are available upon request. The values

shown represent the average for several tests which highlighted the variability of Flow Coefficients. It is not unreasonable to expect a 10% to 20% deviation for a specific valve from the nominal figures shown.

Knowing specific system characteristics; such as line size, flow rate, temperature and pressure and knowing specific fluid charac-

teristics; such as specific gravity, density, or compressibility factor allows the verification of the pressure drop across a known valve. Or conversely, in the absence of a valve size and knowing an acceptable pressure drop under the described flow conditions it is possible to select an appropriately sized valve.

Flow Coefficients

Flow of Liquids

$$Q = C_v \sqrt{\frac{P_D}{S_G}} \quad \text{or} \quad B = \frac{Q(S_G)}{P_D}$$

Where: Q = Flow in US GPM
 P_D = Pressure Drop (PSI)
 S_G = Specific Gravity at flow conditions
 C_V = Valve Flow Coefficient

Flow of Gases

$$B = \frac{1.101 \times 10^{-4} Q \sqrt{P_2}}{P_D \sqrt{Z T}} \quad \text{or} \quad Q = 1560 (C_v) \sqrt{\frac{P_D \sqrt{Z T}}{P_2}}$$

Where: Q = Flow in SCFM
 P_D = Pressure Drop (PSI)
 P₂ = Outlet Pressure PSIA
 T = Temp.(°R) or (°F + 460)
 S_G = Specific Gravity at flow conditions
 C_V = Valve Flow Coefficient

Top Entry Valves

Terms and Conditions

GENERAL INFORMATION ON PRICING

Please note that throughout our price list some products are listed P.O.A. (Price On Application). This is to eliminate a confusing and lengthy price list. For example, we can supply bodies in various alloys. We can also supply many different options. In addition to the above, we can also supply fabricated products to your specifications. Special handling fee for same day shipment \$20.

Conbraco offers special coatings and galvanized coating. Please contact the factory for pricing.

TERMS AND CONDITIONS OF SALE

Payment: 2% 10th prox. Net 30 days.

All prices F.O.B. shipping point with freight allowed on shipments of 750 pounds and/or \$5,000 net minimum to all shipping points within the United States excluding Alaska and Hawaii. No freight allowed on Air Freight or Parcel Post shipments. Claims for shortages must be made within 10 days of receipt of material. Our responsibility ends when a delivery receipt is furnished us by the carrier.

No invoice rendered For Less than \$50.00.

No freight will be allowed on Air Freight, Air Express, Parcel Post or U.P.S. shipments.

Other Conbraco products may be combined with ball valves to make sufficient weight for full freight allowance.

Phone order quoted prices are subject to correction. Prices and designs are subject to change without notice.

Orders for material of special design or specification are made to customer's order and are not subject to cancellation or return.

All goods returned to us will not be accepted unless a full explanation has been made and our written authorized permission obtained. All goods returned - if accepted - will be credited at invoice price, less 30% for service and rehandling charges, plus shipping expenses.

We reserve the right to adjust orders to box quantities.

WARRANTY & LIMITATIONS OF LIABILITY

Conbraco Industries, Inc. warrants, to its initial purchaser only, that its products which are delivered to this initial purchaser will be of the kind described in the order or price list and will be free of defects in workmanship or material for a period of two years from the date of delivery to you, our initial purchaser.

Should any failure to conform to this warranty appear within two years after the date of the initial delivery to our initial purchaser, Conbraco will, upon written notification thereof and substantiation that the goods have been stored, installed, maintained and operated in accordance with Conbraco's recommendations and standard industry practice, correct such defects by suitable repair or replacement at Conbraco's own expense.

New For April 2009: Extension of Warranty for Apollo products manufactured in the USA. Conbraco warrants those products that are manufactured in our USA facilities for an additional 3 years; making the total warranty FIVE years. This extended warranty applies to Apollo brand product with "Made in the USA" markings only.

THIS WARRANTY IS EXCLUSIVE AND IS IN LIEU OF ANY IMPLIED WARRANTY OF MERCHANTABILITY, FITNESS FOR A PARTICULAR PURPOSE OR OTHER WARRANTY OF QUALITY, WHETHER EXPRESSED OR IMPLIED, EXCEPT THE WARRANTY OF TITLE AND AGAINST PATENT INFRINGEMENT. Correction of non-conformities, in the manner and for the period of time provided above, shall constitute fulfillment of all liabilities of Conbraco to our initial purchaser, with respect to the goods, whether based on contract, negligence, strict tort or otherwise. It is the intention of Conbraco Industries, Inc. that no warranty of any kind, whether expressed or implied shall pass through our initial purchaser to any other person or corporation.

LIMITATION OF LIABILITY: Conbraco Industries, inc. SHALL NOT UNDER ANY CIRCUMSTANCES BE LIABLE FOR SPECIAL OR CONSEQUENTIAL DAMAGES SUCH AS, BUT NOT LIMITED TO, DAMAGES OR TO LOSS OF OTHER PROPERTY OR EQUIPMENT, LOSS OF PROFITS OR REVENUE, COST OF CAPITAL, COST OF PURCHASED OR REPLACEMENT GOODS, OR CLAIMS OF CUSTOMERS OF OUR INITIAL PURCHASER. THE REMEDIES OF OUR INITIAL PURCHASER, AND ALL OTHERS, SET FORTH HEREIN, ARE EXCLUSIVE, AND THE LIABILITY OF CONBRACO WITH RESPECT TO SAME SHALL NOT, EXCEPT AS EXPRESSLY PROVIDED HEREIN, EXCEED THE PRICE OF THE GOODS UPON WHICH SUCH LIABILITY IS BASED.

* It is the end user's responsibility to confirm that items intended for use satisfy local codes and standards.

Conbraco® and Apollo® are registered trademarks of Conbraco Industries Inc. Conbraco Industries Inc. reserves the right to change specifications without notice.



Sales and Customer Service
Phone: (704) 841-6000
Fax: (704) 841-6020
www.apollovalves.com

			E-Mail Address	Phone	Fax
Southeast Region	Spirit Group	Florida (except Pan Handle)	info@spiritgroupinc.com	407-291-6035	407-299-0378
	Spotswood Associates	Georgia/Alabama	dlewis@spotswoodassociates.com	770-447-1227	770-263-6899
	Pro Marketing, Inc.	North Carolina/South Carolina/Tennessee-East	sales@promarketinginc.net	864-578-4334	864-578-4889
	Mid South Marketing, Inc.	Virginia/Maryland/Washington, D.C./WV-East	midsouth7@aol.com	804-213-3801	804-213-3802
Southern Region	Southern Marketing Group	MS/TN-West/AR/Bowie Cty.-TX	SMG49@bellsouth.net	901-547-0042	901-547-0035
	AVC Mechanical Sales, Inc.	Oklahoma (Plmb & Ind'l)/Texas-North (All)	valvesales@avalve.com	214-201-0100	214-201-0104
	Armstrong/Weatherly Associates	Texas-South/Louisiana	sales@armstrong-weatherly.com	713-692-5566	713-692-6021
Midwestern Region	New Tech Marketing	IL/WI-East/IN-North/MI-Upper Peninsula/IA-/River Counties	sales@new-techmarketing.com	630-378-4300	630-378-0343
	New Tech Marketing	Eastern Missouri/Southern Illinois/Kansas City	ntm112@aol.com	618-394-0329	618-394-0427
	Whitfill-McCarthy, LLC	Kentucky/Indiana-South/Ohio-South	whitfill@win.net	502-459-4545	502-459-9944
	V.E. Sales Co., Inc.	Michigan (Except Upper Peninsula)	tomv@vesalesinc.com	586-774-7760	586-774-1490
	Formation Sales	Minnesota/North & South Dakota/Wisconsin-West	dean@formationsales.com	763-262-4700	763-262-4740
	Marshall-Rodeno Heartland Midwest Spec	Nebraska/Iowa (Except River Counties) Ohio-North/Pennsylvania-West/West Virginia-West	trodeno@marshallrodeno.com glsales@mwspec.com	303-575-6701 330-538-0406	303-575-6706 330-538-0410
Western Region	Spec Management Group	California-South (Irrigation), Hawaii (All Products)	msmarch4@cox.net	949-481-4225	949-487-0990
	Specified Process Equipment Co.	California - North	jd@specifiedprocess.com	707-747-3466	707-747-4957
	Marshall-Rodeno Associated	CO/WY/MT/ID-SE/UT/NV-NE/NM/EI Paso-TX	trodeno@marshallrodeno.com	303-575-6701	303-575-6706
	Suntoya Corporation	WA, OR, AK, Northern counties ID	kim@suntoya.com	509-534-1516	509-535-6546
Southwestern Industrial Sales Co.		Arizona/Nevada-SW	eduardop@sw-ind.com	480-458-5838	480-458-5843
Northeast Region	Urell, Inc.	Massachusetts/New England States	conbraco@urell.com	617-923-9500	617-926-9414
	Conroy & Griese Sales, Inc.	New York-East/New Jersey-North	iezzi52@aol.com	856-663-4440	856-663-6644
	Layden Company	PA-East/DE/NJ-South/NY-Upstate & West	joejr@laydencompany.com	610-363-6657	877-529-3361
	Keith Engle & Associates	OEM accounts	keith.engle@verizon.net	610-827-9560	610-827-9561
Canada	Conbraco Industries, Canada	178 Pennsylvania Ave., Unit 1, Concord, Ontario L4K 4B1	conbraco.canada@conbraco.com	905-761-6161	905-761-6666
Int'l.	Sadek Trading Conbraco International Sales:	Middle East (except Israel)	ysadek@aol.com	704-618-6613	980-233-8437
		Mexico	jose.arias@conbraco.com	956-631-4542	956-631-4681
		Caribbean	luis.guzman@conbraco.com	787-739-5620	
		Central & South America	esteban.bejarano@conbraco.com	506-8836-0759	
		Asia Pacific	jonathan.yap@conbraco.com	65-9626-9241	65-6753-0131
		Europe	allen.bellamy@conbraco.com	44-161-212-3745	44-161-212-3747
Africa/Australia/Israel/India		donna.bult@conbraco.com	954-252-9781	954-252-8698	
	Regional Sales Managers:				
		Brian Blalock (East)	brian.blalock@conbraco.com	704-624-3744	704-841-6021
		Steve Brown (Northwest)	steve.brown@conbraco.com	425-985-5095	253-862-3548
		Skip Wilson (West)	skip.wilson@conbraco.com	760-330-3293	775-854-5722