



S-26

BRADYID.COM

SAFETY, FACILITY AND EQUIPMENT IDENTIFICATION

Safety Signs

Visual Warnings

Dispensers

Numbers & Letters

Printers & Software

Regulatory Marking

Pipe Markers

Labels & Tags

Sorbents

Lockout/Tagout

Develop Facility, Safety and Regulatory Compliance Programs & Procedures

Brady offers five distinctive engineering audit and procedure development services that produce fast, complete and cost-effective safety and compliance solutions for your facility.



1. Graphical Lockout Procedure Service

Brady professional engineers create visually instructive, machine-specific lockout procedures that reduce the time it takes to safely, quickly and consistently lock out equipment.

2. Facility Marking Audit & Assessment



A Brady project manager inspects your facility, assesses your current safety signage identification program and composes a comprehensive report providing corrective actions and a complete list of required and recommended ID signs and labels.

3. Slips / Trips / Falls Audit & Assessment

Brady engineers perform a complete audit of your facilities, document and summarize recommended steps to minimize S/T/F concerns and provide a written program that includes facility inspection and employee training elements.



4. Graphical Confined Space Procedure Service



Brady engineers create visually instructive confined space procedures. We develop procedural checklists, detail required equipment and safety devices, identify potential hazards, document methods to protect workers and verifications of hazard elimination.

5. Graphical Preventive Maintenance Procedure Service

Brady project managers create visually instructive, comprehensive instructions for the maintenance and care of your machinery. We develop procedural checklists, detailed instructions augmented with graphical images or line drawings, establish the required frequency of PM, the parts needed and lubricants to use.

To Learn More Call:
1-800-496-4040

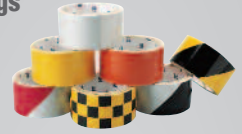
Safety Signs

4



Visual Warnings

12



Dispensers

18



Numbers & Letters

20



Printers & Software

22



Regulatory Marking

30



Pipe Markers

35



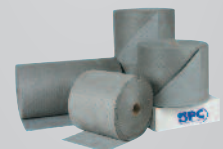
Labels & Tags

38



Sorbents

41



Lockout/Tagout

44



Sustain Your Gains from Lean Manufacturing

Equipment Reliability Made Visual

Visual Workplace is a lean concept that emphasizes putting critical information at the point of use. Visual devices play a critical role in many of the most popular lean techniques, such as 5S, Standard Work, Total Productive Maintenance, etc. In fact, Visual Workplace serves as the key sustaining force for these initiatives, ensuring that lean improvements remain clearly visible, readily understood, and consistently adhered to long after the kaizen event is over.

Brady printing systems are essential tools for creating a visual workplace. Create your own custom signs, labels and tags onsite and on-demand... for a fraction of the cost of using an outside sign shop. Designed for industrial use, labels printed on a Brady printer withstand harsh environments and stick to virtually any clean, dry surface.

Visual Order



Visual Production / Inventory Control



Visual Standards



Visual Metrics / Displays



Visual Equipment



Visual Safety



Print Lean Signs, Labels & Tags
With MarkWare™ Software and
Brady Printing Systems
pg.22

For more information on visual workplace, visit www.bradyid.com/visualworkplace. The Brady visual workplace website is a great source for visual workplace ideas, best practices and solutions, providing easy one-stop access to wide range of example photographs, articles, online demos, plus information on upcoming and past lean-related webcasts.

About Safety Signs

ASME (ANSI Z535)

ASME (ANSI Z535) and the Occupational Safety and Health Administration (OSHA 1910.145) Specifications for Accident Prevention Signs require the use of Safety Signs to indicate and define specific hazards that, without identification, may lead to accidental injury to workers and/or the public or to property damage.

Danger

Indicates an immediate hazard; a hazard capable of producing irreversible damage or injury.



Warning

Indicates a potentially hazardous situation which, if not avoided, could result in death or serious injury.



Caution

Indicates a potentially hazardous situation; a hazard capable of resulting in severe but not irreversible injury or damage.



Notice

Provides information of a general type in order to avoid confusion or misunderstanding.



Think, Be Careful, Safety First

Includes notices of general practice and rules relating to health, first aid, medical equipment, sanitation, housekeeping and general safety.



Safety Sign Material Guide

FG- Premium Fiberglass Signs – B-120

- Made of our highest quality, longest lasting sign material
- Will not peel or fade
- Guaranteed for 15 years
- Ideal for outdoors or harsh environments

AL- Aluminum Signs – B-555

- Superior abrasion and chemical resistance, indoors or out
- Protected graphics keep message clear
- Weather and sunlight resistant
- Stands up to spills, washdowns and cleanings

PL- Plastic Signs – B-401

- Economically priced, perfect for light duty or temporary use
- Protected graphics for durability
- 1 to 2 year outdoor life
- Over 2000 stock legends



SS- High Performance Polyester Signs – B-302

- Bright graphics on flexible material, sticks to almost any shape or surface
- Lasts up to 8 years outdoors, longer indoors
- Stands up to repeated spills and cleanings
- Permanent adhesive holds where others fail

Or, make your own signs with Brady's Make-It-Yourself system – PowerMark™ or GlobalMark®

Brady® offers a sign material for virtually every application. Whether the sign is used indoors or outdoors, in mild or harsh environments, we have the material to match your application. Select the right sign for your application dependent upon the factors listed in the table below.

Material Descriptions	Protected Graphics	Self-Sticking	Indoor(I) Outdoor(O)	Average Outdoor Durability (Yrs)	Chemical Resistance	Abrasion Resistance	Upper Temp Limit
B-302 High Performance Polyester	Yes	Yes	I/O	8	Excellent	Excellent	230° F, 100°C
B-946 Self-Sticking Vinyl	No	Yes	I/O	5	Fair	Good	180°F, 82°C
B-997 BradyLite® Reflective Vinyl	No	Yes	I/O	4-6	Good	Good	200°F, 93°C
B-324 BradyGlo™ Polyester	No	Yes	I	-	Good	Good	230°F, 110°C
B-928 Write-On Vinyl	No	Yes	I/O	2	Good	Good	176°F, 93°C
B-347 BradyGlo™ Plastic	No	No	I	-	Good	Good	194°F, 110°C
B-401 BradyTuff™ Plastic	Yes	No	I/O	2	Good	Good	150°F, 66°C
B-793 Polystyrene	No	No	I/O	1-3	Poor	Good	165°F, 74°C
B-836 Temporary Sign Fluted Polypropylene	No	No	I/O	1	Good	Good	130°F, 54°C
B-450 Polyethylene Plastic	No	No	I	3-5	Good	Good	180°F, 82°C
B-382 BradyGuard™ Plastic	Yes	No	I/O	8	Good	Good	175°F, 79°C
B-1 Engraved Plastic	No	No	I/O	5-8	Good	Good	193°F, 89°C
B-555 BradyTuff™ Aluminum	Yes	No	I/O	5-8	Excellent	Excellent	212°F, 100°C
B-959 Reflective Aluminum	No	No	I/O	5-8	Good	Good	196°F, 80°C
B-995 Diamond-Grade™ Reflective Aluminum	No	No	O	7	Good	Good	200°F, 93°C
B-811 Magnetic Vinyl	No	No	O	2-4	Good	Good	158°F, 70°C
B-120 Premium Fiberglass	Yes	No	I/O	15	Excellent	Excellent	190°F, 88°C
B-140 BradyLam™ Fiberglass	Yes	No	I/O	15	Excellent	Excellent	230°F, 110°C
B-320 BradyLex™ Fiberglass	Yes	No	I/O	8	Good	Good	175°F, 79°C

Safety Signs

Admittance Signs



FG - 10 x 14 - 71545



FG - 7 x 10 - 71565
 FG - 10 x 14 - 47005
 AL - 7 x 10 - 43109
 AL - 10 x 14 - 43110
 PL - 10 x 14 - 25533
 SS - 7 x 10 - 84876
 SS - 10 x 14 - 84877



B-324 - 7 x 10 - 73540



FG - 10 x 14 - 45471
 AL - 10 x 14 - 40668
 PL - 10 x 14 - 22104
 SS - 10 x 14 - 84084



FG - 10 x 14 - 70602
 AL - 10 x 14 - 40706
 PL - 10 x 14 - 22142
 SS - 10 x 14 - 84130



AL - 10 x 14 - 40728
 PL - 10 x 14 - 22164

Admittance Signs



AL - 10 x 14 - 40754
 PL - 10 x 14 - 22190



PL - 10 x 14 - 22178

Biohazard Signs

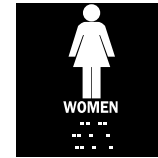


SS - 3¹/₂ x 5 - 89170

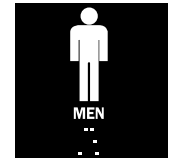
Braille Signs



B-81-Blk-8 x 8 -70103



B-81-Blk-8 x 8 -73400



B-81-Blk-8 x 8 -70102



B-81-Wht/Blk-2 x 8 -70115

PRICING
 8x8 - \$46.84
 2x8 - \$34.29

Chemical & Hazardous Materials



SS - 10 x 14 - 84376



SS - 10 x 14 - 85184



FF - 7 x 10 -102431
 FA - 7 x 10 -104934



FF - 7 x 10 -102441
 FA - 7 x 10 -102483



FF - 7 x 10 -102453
 FA - 7 x 10 -102495



FF - 7 x 10 -102459
 FA - 7 x 10 -102469

Confined Space

1910.146(c)(2), 1910.145(c)(2)

Sign Pricing on Page 11

Permit Required Confined Space, Do Not Enter 1910.146(c)(2)

Exposed employees must be informed of the existence and location of and the danger posed by permit-required confined spaces through the posting of danger signs or by any other equally effective means.

A sign reading "DANGER – PERMIT – REQUIRED CONFINED SPACE, DO NOT ENTER" or using other similar language satisfies the requirement.

Accident Prevention 1910.145(c)(2)

Caution signs shall be used only to warn against potential hazards or to caution against unsafe practices. All employees shall be instructed that caution signs indicate a possible hazard against which proper precaution should be taken.



FG - 10 x 14 - 47050
 AL - 10 x 14 - 40964
 PL - 10 x 14 - 22400
 SS - 10 x 14 - 84530



AL - 10 x 14 - 40970
 PL - 10 x 14 - 22406



AL - 10 x 14 - 40972
 PL - 10 x 14 - 22408
 SS - 10 x 14 - 84538



AL - 10 x 14 - 43518
 SS - 10 x 14 - 65949



FG - 7 x 10 - 70248
 FG - 10 x 14 - 70249
 AL - 7 x 10 - 40988
 AL - 10 x 14 - 40989
 PL - 7 x 10 - 22424
 PL - 10 x 14 - 22425
 SS - 7 x 10 - 84562
 SS - 10 x 14 - 84563



AL - 10 x 14 - 41191
 PL - 10 x 14 - 22627



FF - 7 x 10 -102432
 FA - 7 x 10 -104935



FF - 7 x 10 -102433
 FA - 7 x 10 -104936



FF - 7 x 10 -102434
 FA - 7 x 10 -104937

Sign Materials

AL - Aluminum	PL - Plastic
FA - FireFly Aluminum	RF - FireFly Reflective Only
FF - FireFly Self-Sticking	SS - Self-Sticking Polyester
FG - Premium Fiberglass	B-324 - Glow-in-Dark Self-Sticking
	B-347 - Glow-in-Dark Plastic

Electrical Hazard

1910.305(b)(3), 1910.303(g)(1)

High Voltage 1910.305(b)(3)

Covers for boxes shall be permanently marked "High Voltage." The marking shall be on the outside of the box cover and shall be readily visible and legible.

Access Area Marking 1910.303(g)(1)

Sufficient access and working space must be provided and maintained about all electric equipment to permit ready and safe operation and maintenance of the equipment.



SS - 7 x 10 - 84827



Electrical
SS - 3 x 3 - 89153



FF - 7 x 10 -102436
FA - 7 x 10 -102478



FF - 7 x 10 -102445
FA - 7 x 10 -102487



FF - 7 x 10 -102446
FA - 7 x 10 -102488

Egress

1910.37(Q), 1910.38(a)(2), 1910.120(1)(2), 1910.37(q)(1),(3),(4),(6),(8)

Not an Exit 1910.37(Q)

Any door, passage, or stairway that is not an exit or a way to get to an exit, but looks as though it could be an exit must be marked with a sign reading "NOT AN EXIT," or must be identified by a sign telling what it is, such as "to basement," "storeroom," "linen closet," or whatever it may be.

Evacuation Route 1910.38(a)(2), 1910.120(1)(2)(vi) (Informational marking)

Elements of an emergency response plan. The employer shall develop an emergency response plan for emergencies which shall address, as minimum, the following:...(vi) Evacuation routes and procedures.

Exit 1910.37(q)(1),(3),(4),(6),(8)

Exits shall be marked by a readily visible sign. They must be of such size, color and design as to be readily visible, contrasting with the colors and decorations around them. A sign reading "EXIT," with an arrow showing the directions, must be placed in every location where the direction of travel to get to the nearest exit is not immediately obvious.



PL - 10 x 14 - 22490
SS - 10 x 14 - 84674



B-324 - 7 x 10 - 73509
B-324 - 10 x 14 - 73510
B-347 - 10 x 14 - 80282



B-324 - 7 x 10 - 80215
B-347 - 7 x 10 - 80283
B-347 - 10 x 14 - 80284



RF - 10 x 14 -102526



RF - 10 x 14 -102527



RF - 10 x 14 -102528



B-324 - 7 x 10 - 73542



PL - 10 x 14 - 22502
SS - 7 x 10 - 84687



B-324 - 7 x 10 - 73545
B-324 - 10 x 14 - 80250



B-324 - 10 x 7 - 80217
B-324 - 14 x 10 - 80218



B-324 - 10 x 7 - 80219



Frameless Exit Sign - \$88.14
Red Exit - 8.25 x 15.25 - 87807
Green Exit - 8.25 x 15.25 - 87808



Description	Black	Red	Green	White	Price
Wall Mounted Exit Sign	37851	90885	90887	80753	\$168.03
Single-sided sign w/bracket	38097	90839	90841	80754	\$201.59
Double-sided sign w/bracket	38098	90840	90842	80755	\$319.19

Clear mounting clips are available for additional security from vandalism & theft—
Catalog No. 87806 (4 clips per package) \$5.87

BradyGlo™ 10+ hour material exceeds these standards:

ASTM E2072-00/E2073-02/E2030-02
ASTM/ E162/ E648/ E662, SMP800C
IMO Resolution A. 752(18)
ISO/CD 15370
PSPA Standard 002 Part 2 1993 Class A Rev. 2: 09/99
DIN 67 510
NFPA 101 Life Safety Code 2000 7.10.7.2
OSHA 1910.37
Lloyd's Register Cert. SAS F050294

Safety Signs

Fire Safety

Flammable: Keep Fire Away 1910.106(d)(3)(ii)

Storage cabinets in which you keep flammable liquids, such as gasoline, must be labeled in conspicuous lettering, "Flammable – Keep Fire Away."

Fire Extinguisher Marking 1910.157(c)(1)

If you are using portable fire extinguishers, you must mount, locate and identify them so that they are readily accessible to employees.

Fire Hose 1910.158(c)(1)

Where reels or cabinets are provided to contain fire hose, the employer must be sure that they are conspicuously identified and used only for fire equipment.



FG - 14 x 10 - 69074
AL - 14 x 10 - 43294
PL - 14 x 10 - 25717
SS - 14 x 10 - 86091
B-324 - 14 x 10 - 80162



FG - 14 x 3 1/2 - 47039
FG - 24 x 4 - 71655
AL - 10 x 7 - 43295
PL - 10 x 7 - 25718
B324 - 14 x 5 - 80241



B-324 - 5 x 14 - 80242



B-324 - 5 x 14 - 80202



B-450 - 12x9 -70998(L-style)
B-450 - 12x18 -96908(V-style)

PRICING
L-style - \$15.55
V-style - \$22.11



B-493 - 45368 - \$21.87
5 1/2" H x 10" W x 4" D



B-493 - 45366 - \$21.87
5 1/2" H x 10" W x 4" D

Sign Pricing on Page 11



FF - 7 x 10 - 102437



FF - 7 x 10 - 102438



RF - 10 x 14 - 102574



RF - 10 x 14 - 102534



RF - 10 x 14 - 102537



RF - 10 x 14 - 102539

Floor Signs

Phosphorescent Floor Signs address section 4.2.1 Floor Mounted Markings

The ASTM guide for recommended uses of Photoluminescent safety markings describes recommended uses and information on installation of photoluminescent safety markings to supplement emergency lighting.



92405



92406



97615



92404



49807



49061*



97614

Made of B-819 Vinyl Film. Size is 17" diameter.

Price: \$34.84

*Made of B-808 BradyGlo™ Polyester. Size is 17" diameter.

Price: \$41.84

Need Help Finding A Sign?

Brady has thousands of sign legends. Visit the sign section of www.bradyid.com and use our "Search by Legend Feature"



Machine & Operational



PL - 10 x 14 - 22984



FG - 10 x 14 - 47192
AL - 10 x 14 - 42563
PL - 10 x 14 - 23040
SS - 10 x 14 - 88186



FA - 7 x 10 -102490



FF - 7 x 10 -102454
FA - 7 x 10 -102496



FF - 7 x 10 -102465
FA - 7 x 10 -102475



FF - 7 x 10 -102466

Security



PL - 14 x 20 - 95468



PL - 14 x 20 - 95494

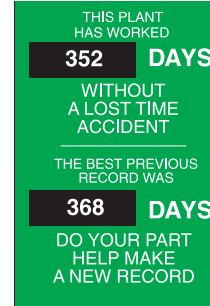


PL - 14 x 20 - 95496



FG - 24" x 18" - 95452

Scoreboards



28" x 20" - 49115
18 gauge steel - \$94.49



28" x 20" - 49116
18 gauge steel - \$94.49

Sign Pricing on Page 11

Smoking

No Smoking 1910.106(e)(6)

Adequate precautions shall be taken to prevent the ignition of flammable vapors. Sources of ignition include but are not limited to open flames; lightning; smoking...

Battery Charging Area 1910.178(g)

Battery charging installations shall be located in areas designated for that purpose.

1910.103(b)(1)

Hydrogen gas is generated in battery charging areas. Smoking shall be prohibited in the charging area.

No Smoking, No Open Flames, No Water Reactive Materials 1910.106(d)(7)

Open flames and smoking shall not be permitted in flammable or combustible liquid storage areas. Water reactive materials may not be stored in the same room with flammable or combustible liquids.



FG - 10 x 7 - 72293
FG - 14 x 10 - 73486
AL - 10 x 7 - 42696
PL - 10 x 7 - 25119
SS - 10 x 7 - 88427



FG - 10 x 14 - 47010
AL - 10 x 14 - 42654
PL - 10 x 14 - 25077
SS - 10 x 14 - 88371



FG - 10 x 14 - 72118
AL - 10 x 14 - 42660
PL - 10 x 14 - 25083
SS - 10 x 14 - 88379



FF - 7 x 10 -102449



RF - 10 x 14 -102555



B-324 - 7 x 10 - 80248



SS - 5 x 14 - 88418

**Didn't Find the Product
You were Looking For?**
 View our full offering:
www.bradyid.com



Sign Materials

AL - Aluminum
FA - FireFly Aluminum
FF - FireFly Self-Sticking
FG - Premium Fiberglass
PL - Plastic

RF - FireFly Reflective Only
SS - Self-Sticking Polyester
B-324 - Glow-in-Dark Self-Sticking
B-347 - Glow-in-Dark Plastic
B-493 - Polystyrene

Safety Signs

Traffic Control

A New Manual on Uniform Traffic Control Devices (MUTCD) Eff. 1/16/01

FEDERAL MUTCD STANDARD

- No person shall install or maintain in any area of private property used by the public any sign, signal, marking or other device intended to regulate, warn or guide traffic unless it conforms to the MUTCD.

ALL TRAFFIC AND PARKING SIGNS MUST BE REFLECTIVE AND MEET MINIMUM REFLECTIVE STANDARDS

- Minimum reflective standards required, no more non-reflective signs allowed
- Day/night inspection and maintenance of all signs is required
- All signs must conform to the standard sizes, shapes and colors called for in MUTCD

ALL POSTS USED FOR MOUNTING MUST BE BREAKAWAY STYLE AND MOUNTED AT NEW MINIMUM MOUNTING HEIGHTS

- All supports require breakaway sockets or posts
- Minimum mounting height is 5' from the bottom of the sign to the top of the ground in rural or low-volume areas
- Minimum mounting height is 7' from the bottom of the sign in urban or heavily traveled areas



B-959 - 12 x 12 - 94174



B-959 - 18 x 12 - 91362



B-959 - 18 x 12 - 91356



B-959 - 18 x 12 - 91360



B-959 - 18 x 12 - 94175



B-959 - 18 x 12 - 91388



B-959 - 6 x 12 - 91387



B-959 - 6 x 12 - 80049



B-959 - 18 x 12 - 94130



B-959 - 18 x 12 - 94119



B-959 - 18 x 12 - 94120



FG - 12 x 18 - 75190



B-959 - 18 x 12 - 94116



FG - 18 x 12 - 75227



B-959 - 18 x 12 - 80078



B-959 - 18 x 18 - 94185



B-959 - 18 x 18 - 94181



B-959 - 24 x 24 - 94192



B-959 - 24 x 24 - 94163



B-959 - 24 x 18 - 94197



B-959 - 24 x 18 - 94195



B-959 - 24 x 18 - 94199



B-959 - 30 x 30 - 94150



B-959 - 24 x 24 - 94234
B-959 - 30 x 30 - 94235



B-959 - 30" Dia - 94307



B-959 - 24" - 94148
B-959 - 30" - 80072



B-959 - 18 x 18 - 94142
B-959 - 24 x 24 - 94143
B-959 - 30 x 30 - 94144
B-959 - 36 x 36 - 94145



B-959 - 24 x 24 - 80099



B-959 - 18 x 12 - 80106



25 MPH
B-959 - 24 x 18 - 94209
5 MPH
B-959 - 24 x 18 - 94210
10 MPH
B-959 - 24 x 18 - 94211
15 MPH
B-959 - 24 x 18 - 94212
20 MPH
B-959 - 24 x 18 - 94213

Sign Materials

- FG - Premium Fiberglass
- B-959 - Reflective Aluminum

Sign Accessories



Mounting Tape

- Indoor/Outdoor B-156 double-faced foam tape
- Bonds well to rough, irregular surfaces
- Service range: 50°F to 180°F

Roll Mounted		
1/16" thick foam tape, Standard Package: 1 roll		
Size	Cat Number	Price
1" x 36 yds.	19811	\$61.93



Movable Sign Posts

- 17" diameter, 35 pound cast iron base with 1 1/2" diameter, 48" pipe is pre-drilled for signs that are 18" x 18", 24" x 18", or 24" x 24" in size

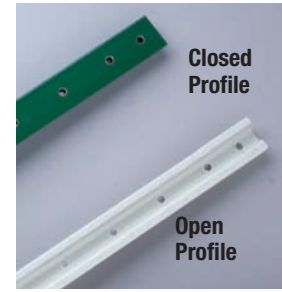
Base	Cat Number	Price
35 lb	86345	\$195.02



Sign Base

- Ideal for temporary use
- Securely mounts with three expansion bolts
- Accepts U-channel Posts
- Cast aluminum base is 15" in diameter and includes post mount stub and hardware

Catalog Number	Price
86339	\$127.53



U-Channel Posts

- Ideal for traffic and industrial signage
- Closed profile posts are 6 times torsionally stronger than steel posts
- Open profile posts are for signs up to 12" x 18"
- Length is 8'

Size	Description	Color	Cat #	Price
8'	Closed profile	White	97208	\$49.36
8'	Closed profile	Green	97210	\$49.36
8'	Open profile	White	97207	\$42.45
8'	Open profile	Green	97209	\$42.45

Stock Sign Pricing

MATERIAL	3 x 3	3 1/2 x 5	5 x 14	7 x 10	10 x 14	12 x 18	14 x 3 1/2	14 x 20	24 x 4	24 x 18
FG - Premium Fiberglass (B-120)	\$1.52			\$13.19	\$23.93	\$33.47	\$11.30		\$15.10	\$62.16
AL- Aluminum (B-555)				\$11.87	\$19.74					
PL - Plastic (B-401)				\$9.81	\$13.90			\$34.10		
SS - High Performance Polyester (B-302)		\$2.24	\$8.20	\$8.38	\$11.53					
BradyGlo™ Polyester (B-324)			\$13.64	\$13.64	\$27.64					
BradyGlo™ Plastic (B-347)				\$23.74	\$54.04					
FF- FireFly® Aluminum (B-147)				\$25.01						
FA - FireFly® Self-Sticking (B-386)				\$20.64						
RF- FireFly® Reflective				\$36.26						

MATERIAL	6 x 12	12 x 12	18 x 12	18 x 18	24 x 18	24 x 24	24" Triangle	30" Triangle	30" Diameter	30 x 30	36 x 36
Reflective Aluminum (B-959)	\$22.77	\$32.29	\$44.17	\$63.75	\$84.66	\$111.61	\$87.18	\$134.20	\$159.47	\$159.47	\$231.93

Visual Warnings



BradyLink® Warning Posts

- Bases and tops are made of polyethylene - posts are made of polystyrene
- Non-conductive, Non-rusting
- Fillable base
- Post dimension: Lg - 3" O.D.
- Post height: Lg - 41"
- Base dimension: Lg - 16" dia.

Post Color	Size	Catalog Number	
		Box of 1	Box of 6
Black	LG	92116	92119
White	LG	92117	92120
Yellow	LG	92118	92121
Price		\$67.27	\$383.47



Connecting Links

- Use for more permanent applications or to repair chain link
- Made of B-900 polyethylene
- Standard package: 36 links

Size	Catalog Number	
	Yellow	Price
2"	78246	\$37.15



Striped Warning Posts

- Use reflective posts for added visibility at night or in low light areas to warn of potential hazards
- Posts have alternating two-color 4" bands

Non-Reflective

Color	Size	Catalog Number	
		1/Box Price	6/Box Price
Blk/Yllw	LG	92122 \$95.66	92123 \$554.20
Blk/Yllw	SM		80946 \$505.58

Reflective

Color	Size	Catalog number	
		Box of 1	Box of 6 Price
Blk/Yllw	LG	N/A	92125 \$584.10



Tensabarrier™ Barricade System

- Black posts are 40" high
- Pull out black/yellow belt is 7.5' long
- 14" diameter base weighs 26 pounds

Cat. No.	Description	Price
80127	Post & "CAUTION-DO NOT ENTER" Belt	\$332.43



BradyLink Warning Chain

- Made of polyethylene
- Link design prevents kinking
- Standard package: 100 feet
- Indoor Use Only

Color	Size	Catalog Number	
		1½" Price	2" Price
Yellow	78234	\$168.98	78238 \$197.45
Orange	-		78241 \$197.45
Alternating Blk/Yllw	-		78254 \$238.72
Weight Per 100' Bag	4 lbs.		6 lbs.



Bradycone™ Warning System

- Made of high impact, weather-resistant materials
- Easy stacking for storage
- Yellow Cones available in two sizes: 25" and 35"

Height	Description	Catalog Number	Price
25"	Cone w/"Safety First" legend	77201	\$46.41
35"	Yellow cone, blank	77205	\$60.14





Reversible Floor Stands

- Made of lightweight corrugated polypropylene material (B-836)
- Stand size: 12" wide by 20" high (closed)
- Standard package: 1 unit

Legend	Cat. No.	Price
Caution-Slippery When Wet/Wet Floor	47380	\$61.95
Caution-Men Working Above/Below	47378	\$61.95



47243

47239

Floor Stands

- Made of durable Polystyrene Plastic
- Printed with same message on both sides
- Size: 12" wide by 20" high
- Standard package: 1 unit

Legend	Catalog Number	Price
Caution - Tripping Hazard	47243	\$39.47
Danger - Persons Working Above	47239	\$39.47

bradyid.com Search Word: **floor stands**



Handy Cone™ Floor Signs

- Collapsible, spring-loaded, pyramid-shaped signs set up in seconds
- Stored in a 2" diameter tube
- Standard package: 1 unit

Legend	Catalog Number	Price
Warning-People Working	47380	\$61.95

bradyid.com Search Word: **handy cone**



Identoline® Underground Warning Tape

- Made of heavy-duty B-720 polyethylene material
- Resists acid, alkalis and other soil substances
- Tape is 4.0 mil. thick with a tough tensile strength of 1750 psi
- Easily identified - APWA (American Public Works Association) color coding
- Overcoated graphics provide long-lasting legibility and hold color values
- Roll size: 6" x 1,000 ft.
- Standard package: one roll

Utility Class	APWA Color	Size W X L	Catalog Number	Price
Electric*	Red	3" x 1,000'	91295	\$64.31
Electric	Red	6" x 1,000'	91296	\$108.29

*Legend appears on one line

bradyid.com Search Word: **warning tape**



The Brady Boys

- Made of high-impact polyethylene
- Interlocking - no tools or added parts needed
- Weight: 5½ lbs. each
- 41"h x 31"w x 1"thick each
- Standard package: box of two

Legend	Catalog Number	Price
Caution-Out of Service	92270	\$294.21



Detectable Identoline® Warning Tape

- Made of tough B-721 metal detectable polyester material
- Subsurface graphics seal the legend from acids, alkalis and other soil substances
- Easily identified - sharply printed legend on APWA color-coded background
- OSHA approved - meets OSHA regulation 1926.956(c)(1) covering location or underground utility lines
- Foil is 4.5 mils
- Roll size: 2" x 1,000 ft.
- Standard package: one roll

Utility Class	APWA Color	Size W X L	Catalog Number	Price
Electric	Red	2" x 1,000'	91601	\$143.30

Visual Warnings

Safety Color Code for Marking Physical Hazards

1910.144(a)

Use yellow and black for physical hazards, red and white for fire protection equipment, black and white for traffic and housekeeping markings, magenta and yellow for radiation hazards.



Barricade Tape

- Made of non-adhesive B-912 polyethylene
- Use for temporary outdoor or permanent indoor applications
- Lightweight tape can be tied, stapled or nailed to posts, fences or metal barricades
- Standard package: one roll

Legend	Color	Catalog Number	
		3" x 200'	3" x 1000'
CAUTION	Black/Yellow	91212	91450
CAUTION DO NOT ENTER	Black/Yellow	91224	91451
DANGER	Black/Red	91200	91201
Price		\$30.26	\$57.26



Re-Pulpable Barricade Tape

- Made of 100% strong woven, biodegradable cotton material
- Tape will break down if accidentally introduced into the system
- Standard package: one roll

Legend	Color	Size W X L	Catalog Number
Caution	Black/Yellow	3" x 50 yds.	91083
Danger	Black/Red	3" x 50 yds.	91084
Price			\$36.69



Reinforced Barricade Tape

- Stronger than ordinary Barricade Tape
- No stretch or sag in sunlight or wind
- Tough enough to be used again and again
- Standard package: one roll
- 250 lbs tensile strength

Legend	Color	Size	Catalog Number
CAUTION	Black/Yellow	3" x 500'	91100
CAUTION DO NOT ENTER	Black/Yellow	3" x 500'	91102
Price			\$70.69



Pennant Barricade Tape

- Tough and durable flag barricade can be used repeatedly
- Pennants are 18" x 18" triangles spaced evenly across tape
- 15 pennants on 83' tape, 25 pennants on 113' tape

Size	Catalog No.	Price
83 ft (15 Pennants)	58388	\$71.77
113 ft (25 Pennants)	58389	\$104.25



Woven Barricade Tape

- Made of B-903 polypropylene
- Contains ultraviolet inhibitors for permanent outdoor marking
- Standard package: one roll

Size	Color	Catalog Number	Price
3/4" x 150'	Black/Yellow	91172	\$8.03
2" x 200'	Black/Yellow	91176	\$23.38
2" x 200'	Black/Red	91179	\$23.38

bradyid.com Search Word:
barricade Tape



Warning Stripe Tape

- Made of B-950 vinyl
- Locked-in colors - sealed beneath protective layer of abrasion resistant clear vinyl
- Permanent adhesive
- Stands up to the toughest indoor conditions
- Meets OSHA specifications
- Standard package: one 18 yd. roll

Width	Catalog Number Stripes				Price
	Blk/Ylw	Rd/Wht	Blk/Wht	Grn/Wht	
1"	55300	55294	55290	-	\$18.30
2"	55302	55296	55292	90019	\$36.15
3"	55303	55297	55293	90020	\$50.13

Mark Aisles & Passageways

CFR 1910.22(b)(2)

Permanent aisles and passageways must be appropriately marked.

1910.22(b)(1)

Where mechanical handling equipment is used, sufficient safe clearances shall be allowed for aisles, at loading docks, through doorways and wherever turns or passage must be made. Aisles and passageways shall be kept clear and in good repairs, with no obstruction across or in aisles that could create a hazard

Yellow and Black Caution Tape-29 CFR 1910.145(c)(2)

Caution signage shall be used to warn against potential hazards or to caution against unsafe practices.



Stripe Aisle Marking Tape

- Made of B-950 vinyl
- Tape size: 3"
- Standard package: one 60' roll

Legend	Color	Cat. No.	Price
	Black/Yellow	58255	\$62.58
	Black/Yellow	58257	\$62.58



Reflective Stripes & Solid Tape

- Made of B-957 reflective tape
- Standard package: one 5 yd. roll

Solid Color Tapes			
Width	White	Catalog Number	Price
2"	78985		\$52.34
Stripes			
Width	Stripes Black & Yellow	Red & White	Price
2"	76308	76309	\$59.39
3"	76312	76313	\$78.18



Glow-in-the-dark Arrow Tape

- BradyGlo™ B-324 arrow tapes exceed ASTM E 2072-00 standard specifications
- Designed for safe LLL (Low Level Lighting) egress pathway marking during power outages and emergency situations
- Standard package: one 5 yd. roll

V-Style		
Width	Catalog No.	Price
2"	90971	\$72.56

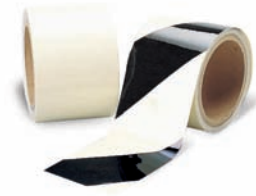
Arrow-Style		
Width	Catalog No.	Price
2"	90973	\$72.56
3"	90974	\$89.31



Hazard Marking Tape

- Made of B-819 matte anti-slip overlamine
- Tape size: 3"
- Standard package: one 18 yd. roll

Legend	Size	Cat. Number	Price
Caution	3"	92414	\$75.58
Caution/Do Not Enter	3"	92415	\$75.58
Caution/Watch Your Step	3"	92416	\$75.58



Glow-in-the-Dark Tapes

- Made of B-324 phosphorescent
- Standard package: one 5 yd. roll

Solid		
Width	Catalog Number	Price
2"	76432	\$63.97
3"	76433	\$84.15



Anti-Skid Tape - Roll Mounted

- Made of rugged B-916 permanent adhesive-backed polyester tape coated with thousands of particles of durable aluminum oxide grit
- Works indoors and outdoors
- Standard package: one 60' roll

Color	Size	Cat #	Price
Black	1" x 60'	78189	\$32.57
Black	2" x 60'	78190	\$65.28
Red	2" x 60'	78198	\$71.30
Safety Yellow	2" x 60'	78091	\$71.30
Black	4" x 60'	78191	\$129.14
Safety Yellow	4" x 60'	78092	\$142.82
Black	6" x 60'	78193	\$195.66
Black	12" x 60'	78194	\$386.70

Visual Warnings



Striped Anti-Skid Tape

- Made of B-916 grit coated polyester tape
- Adhesive backed plastic tape with an oxide grit coating
- Standard package: one 60' roll

Color	Size	Catalog Number	Price
Black & Yellow	1" x 60'	78146	\$41.92
Black & Yellow	2" x 60'	78147	\$83.84
Black & Yellow	3" x 60'	78148	\$125.78
Black & Yellow	4" x 60'	78149	\$167.66
Black & Yellow	6" x 60'	78150	\$215.37



Anti-Skid Cleats

- Made of B-916 grit-coated polyester tape
- Standard package: 50 cleats

Color	Size	Catalog Number	Price
Black	6" x 24"	78195	\$310.65



Glow-in-the-Dark Anti-Skid Tape

- Made from B-916 grit-coated polyester tape
- Material is non-toxic, non-radioactive, environmentally friendly and installs easily
- Tape and cleats comply with ASTM E-2072 and ASTM E2073 standard specifications for photoluminescent safety markings and standard test methods for luminance of photoluminescent markings

Cat. No.	Description	Size	Price
99049	Glow ANTI-SKID Tape Roll	2" x 60'	\$80.67



Anti-Skid Tape - Hazard Marking Diecut Cleats

- Made of B-916 grit coated polyester tape
- Standard package: 24 cleats

Legend	Size	Catalog Number	Price
Caution	6" x 24"	78160	\$278.50
Watch Your Step	6" x 24"	78163	\$278.50
Reflective Stripe	6" x 24"	78161	\$239.07
Photo-Lum Stripe	6" x 24"	78162	\$239.07



Aisle Markermatic

- AMA-2 Aisle Markermatic automatically dispenses, spaces and applies 2" or 3" diameter Roll Mounted Dots
- Places Roll Mounted Dots at 12½" intervals
- Dotted line approach uses less tape than conventional solid striping

Catalog Number	Price
55544	\$1,237.02



Roll Mounted Dots

- Made of B-933 vinyl tape
- Single roll of dots will mark over 1,000 lineal feet of aisle or passageway
- Standard package: one roll of 1,000 dots

Size	Catalog Number	Price
3"	55332	\$269.10

bradyid.com Search Word:
 **anti-skid tape**



Vinyl Arrows

- Made of B-933 vinyl tape
- Standard package: 100 arrows per pkg.

Size	Catalog Number		
	Yellow	Red	Glow*
3"	55353	56919	93275*
Price	\$32.57	\$32.57	\$130.52

Made of B-324 Photoluminescent vinyl film

bradyid.com Search Word:
 **direction arrows**



Vinyl Dots

- Made of B-933 self-sticking vinyl tape
- Standard package: 500 dots (Glow is 100)

Size	Catalog Number		
	Yellow	Red	Glow*
3"	55325	55338	58316*
Price	\$134.63	\$134.63	\$125.50

*Made of B-324 photoluminescent vinyl film, quantity per package is 100 dots

bradyid.com Search Word:
 **aisle dots**



Footprints

- Footprint size: 12"
- Bright yellow color

Catalog Number	Material	Qty.	Price
55356 (Left)	Vinyl	1	\$2.13
55357 (Right)	Vinyl	1	\$2.13
31550	Removable	5 sets	\$69.81

bradyid.com Search Word:
 **foot prints**



Aisle Marking Tapes

- Made of long-wearing B-725 vinyl tape
- Applies quickly and sticks tightly
- Standard package: one 36 yd. Roll
- Tape does not work with Universal Line Applicator

Size	Catalog No.					Price
	Yellow	Red	Green	White	Blue	
2"	58200	58201	58202	58203	58220	\$33.04
3"	58250	58251	58252	58253	58221	\$50.06
4"	102838	102836	102834	102837	102833	\$62.82



Blank Bradystake™ Warning Stakes

- Blank stakes with no sign assembly
- Stake size: 66" tall, 3 3/4" wide

Color	Catalog Number With Points	Price
Orange	96950	\$23.65
Yellow	96951	\$23.65
Blue	96952	\$23.65
Green	96953	\$23.65
White	96954	\$23.65
Red	96955	\$23.65
Dark Brown	96957	\$23.65

bradyid.com Search Word:
 **warning stakes**



Reflective Bradystake™ Warning Stakes

- Combines the durability of the standard Bradystake™ with reflective sheeting to provide added visibility day or night
- Reflective sheeting in a 34" striped pattern is pre-applied to both sides
- Stake size: 66" tall

Item	Catalog Number	Price
Orange on White Reflective	96922	\$51.71
Black on Yellow Reflective	96923	\$51.71

Dispensers

Didn't Find the Product You were Looking For?

View our full offering:

www.bradyid.com




Head Wear Dispensers

- Middle divider makes it easy to separate
- White acrylic with see-through lid
- Table top only
- Size: 11 1/2"H x 15 3/8"W x 9"D

Description	Cat Number	Price
'Sanitary Headwear'	PD241E	\$113.10



Bouffant Cap / Beard

- Table or wall mount for easy access
- Size: 14"H x 12"W x 8"D

Description	Cat Number	Price
Bouffant Cap Dispenser	PD524E	\$88.44
Beard Cover Dispenser	PD325E	\$88.44



Dust Mask Dispenser

- Unique cutout design that allows you to reach in the opening to easily remove
- Holds more than 30 masks
- Size: 12 1/2"H x 6"W x 6"D

Description	Cat Number	Price
Dust Mask Dispenser	M420	\$55.32



Glove Dispensers

- The single, double and triple units are all vertically mounted on either wall or counter

Desc.	Size (HxWxD)	Cat. #	Price
Single	5" x 10.93" x 4.12"	GD01	\$31.47
Double	10" x 10.375" x 3.75"	GD02	\$43.28
Triple	15" x 10.375" x 3.75"	GD03	\$49.27



Deluxe Glove Dispenser

- The deluxe triple is mounted horizontally and allows you to change one box without affecting the others
- Size: 11 13/16"H x 20"W x 4"D

Description	Cat Number	Price
Deluxe Glove Dispenser	GD03DL	\$74.54



Deluxe Visitor Spec

- Each dispensers holds approx. 20-25 glasses
- Wall mount only
- Size: 18"H x 8"W x 4"D

Description	Cat No.	Price
Deluxe Visitor Speck Dispenser	MVSD	\$72.71
Deluxe w/cover (not shown)	MVSDL	\$76.41
Economy Dispenser (17 1/4"x8"x4")	EHMVSD	\$63.17



Large Capacity Eye Protection Dispenser

- Rugged clear acrylic unit can be wall or table mounted
- Holds approximately 35 pairs
- Size: 12¹/₄"H x 18"W x 9¹/₄"D

Description	Cat Number	Price
Dispenser	PD701E	\$118.76



Safety Glasses Holder

- This compact unit holds 4-6 pairs of glasses
- Wall or table mount
- Size: 3"H x 9"W x 6"D with 6" high back plate

Description	Cat Number	Price
Holder	2011L	\$44.23
Holder w/o Cover	2011	\$31.58



Double Bottle Eye Wash Station

- Proper usage instructions silk-screened on door
- Wall or table mount
- Size: 10"H x 10¹/₄"W x 7"D

Description	Cat Number	Price
Double Bottle	PD997E	\$77.06
Single Bottle (6 ¹ / ₄ " W)	PD995E	\$58.75



Large Capacity Ear Plug

- Removable inner slanted shelf
- Holds a standard box of 200 disposables
- Size: 13"H x 12"W x 8"D
- Wall or table mount

Description	Cat Number	Price
Dispenser	PD439G	\$83.32



Ear Plug Tray

- Use on table top or mount on wall
- Dispenser size: 10⁵/₈"H x 10⁵/₈"W x 10⁵/₈"D

Description	Cat Number	Price
Ear Plug Tray	PD228E	\$46.75



Compact Ear Plug Dispenser

- Cushioned foam bottom
- Wall or table mount
- Size: 3"H x 9"W x 6"D with 6" high backplate

Description	Cat Number	Price
Dispenser	2019L	\$44.23
Dispenser w/o cover	2019	\$31.58



Miscellaneous PPE Dispenser

- Foam bottom
- Wall or table mount
- Size: 9¹/₂"H x 11¹/₂"W x 9¹/₂"D

Description	Cat Number	Price
Misc. PPE Dispenser	MPPE	\$62.87



Shoe Cover Dispenser

- Holds over 50 pairs of poly shoe covers
- Table top or wall mount
- Size: 14"H x 12"W x 8"D

Description	Cat Number	Price
Shoe Cover Dispenser	PD322E	\$88.00



Clear Acrylic Dispenser Tray

- Use on tabletop or mount on wall
- Size: 3"H x 9"W x 6"D with 6" backplate

Description	Cat Number	Price
Dispenser tray	PD205A	\$30.95
Tray with lid (not shown)	PD206A	\$43.59

Numbers & Letters

NOTICE

Need a Custom Product?
 Brady can customize Signs, Labels,
 Tags, Pipe Markers and More.
 Visit www.bradyid.com and search by
 "custom" or contact your
 local distributor for ordering information



Indoor Numbers & Letters (B-507)

- B-507 plastic coated cloth numbers & letters with pressure sensitive adhesive
- Black characters on a yellow background
- Permanent or Repositionable: once applied, numbers & letters are there to stay...unless you want to change them
- Order by card only

Cat Num	Markers Per Card	Charac. Height	Card Size H x W	Price
3410*	78	3/8"	1/2" x 1 1/2"	\$2.78
3420*	32	5/8"	3/4" x 9/16"	\$2.78
3430*	10	1"	1 1/2" x 7/8"	\$2.78
3440*	10	1 5/16"	2 1/4" x 7/8"	\$3.92
3450*	6	2 5/16"	3 1/2" x 1 1/2"	\$5.52

Stock Cards: Numbers 0-9; Capital Letters A-Z; Dash; Arrows and Blanks available. Add the number or letter you need after the 4 digit number



Indoor Numbers & Letters Combo Packs (B-507)

- B-507 plastic coated cloth tape with pressure sensitive adhesive
- Number packs contain all numbers from 0-9; number of cards vary according to their frequency of use
- Standard package: 25 assorted cards; 32 markers per card

Catalog Number				
Letters	Numbers	Card Size H x W	Charac. Height	Price
34251	34252	3/4" x 9/16"	5/8"	\$41.79



Outdoor Numbers & Letters Combo Packs (B-946)

- B-946 premium outdoor grade vinyl with permanent pressure sensitive adhesive
- Black characters on a yellow background
- Standard package: 25 assorted cards, 10 markers per card

Catalog Number				
Letters	Numbers	Card Size H x W	Charac. Height	Price
97602	97603	1 1/2" x 7/8"	1"	\$45.62

www.bradyid.com/numbersandletters



Indoor/Outdoor Numbers & Letters (B-946)

- Black Helvetica Medium characters on a white background
- Superior chemical resistance - resists oil, grease, water and mild solvents
- UV resistance
- Designed for permanent applications in severe outdoor environments as well as indoors.
- Superior abrasion resistance
- Stock cards: numbers 0-9; capital letters A-Z; dash

Cat. #	Charc. Height	Marker Size	Markers per Card	Price
9712-*	5/8"	3/4" x 2 1/32"	20	\$2.78
9713-*	1"	1 1/2" x 1 1/16"	10	\$3.50
9714-*	1 15/16"	2 3/4" x 1 13/16"	5	\$4.07



Gothic Quick-Align® Kits

- B-933 vinyl film w/ permanent adhesive
- Self-spacing, self-aligning diecut characters
- Industrial grade vinyl resists temperature extremes, abrasion and common solvents
- Each kit contains: 20 each of A, E, I, L, N, O, R, S, T, and numbers 0-9; 10 each of remaining letters; and 5 each of \$, & and punctuation

Gothic Style Kit

Size	Catalog Number		Price
	Black	White	
1"	52203		\$232.76
2"	52207		\$257.43
3"	52211		\$330.82
4"	52215		\$450.91



Bradylite® Reflective Numbers & Letters

- Made from Engineering Grade B-997 BradyLite® Reflective Material - reflects light 100 times brighter than a plain white surface
- Will perform despite storms, snow, humidity and other tough environmental conditions
- **For Low Temperature Applications**
Can be applied at temperatures as low as -10°F
- Standard package: 25

Cat. No.	Marker Size H x W	Letter Height	Color	Price
5890-*	1 7/8" x 1 3/8"	1 1/2"	Yellow/black	\$20.06
5000-*	2 7/8" x 1 3/4"	2 1/2"	Yellow/black	\$20.06
5905-*	1 1/2" x 1"	1"	Yellow/black	\$18.20
5910-*	1 1/2" x 1"	1"	Black/orange	\$18.20



Gothic Quick-Align® Ten Packs

- B-933 vinyl film w/ permanent adhesive
- Order in 10 packs only, no broken packages
- Standard package: 10 identical characters or arrows per pack; five \$, & and punctuation per pack
- Refill your Quick-Align Kit (sold to left)

Size	Catalog Number		Price
	Black	White	
2"	5050-*		\$5.54
3"	5100-*		\$7.18
4"	5140-*		\$9.73
6"	5180-*		\$14.97



3-Series Glow-in-the-Dark / Ultra Reflective Numbers & Letters

- 7x more reflective than other reflective materials
- Black characters w/ glow-in-the-dark border on a highly reflective silver background
- Glow-in-the-dark border illuminates character for distinct definition in blackout conditions
- Designed for permanent application in severe outdoor environments as well as indoors.
- Standard package: 10 identical characters

Catalog Number	Character Height	Marker Size	Price
3000-*	2"	2 7/8" x 1 1/2"	\$1.09
3010-*	3"	3 1/2" x 2 1/2"	\$1.35
3020-*	5"	6" x 3"	\$2.75

Didn't Find the Product You were Looking For?
View our full offering:
www.bradyid.com



HandiMark® Portable Label Maker



Text Sizes .08" to

17"

(2mm to 43mm)



www.bradyid.com/handimark

Create Custom Labels Anytime, Any Way & Anywhere



Pipe Markers



Panel & Switch I.D.



Asset I.D.



Bin & Shelf I.D.



Equipment I.D.



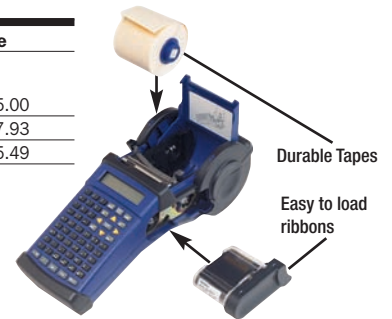
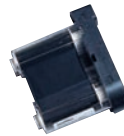
Instrumentation I.D.

HandiMark® Printer & Accessories

Catalog #	Description	Price
42001	HandiMark® Portable Label Maker (Includes rechargeable battery & battery charger, hard carrying case, 1 roll of 2" sample tape, black ribbon, cleaning strip, tutorial and symbols reference chart)	\$795.00
42006	HandiMark AC Power Supply	\$117.93
42124	HandiMark Quick Charger	\$115.49

Industrial Grade Ribbons

Super-tough, smear-proof, easy-to-load ribbons last for years outdoors.



Size	Catalog #					Price
One size fits all tape widths						
	Black	White	Red	Blue	Green	
2" x 75' (51 mm x 23 m)	42011	42012	42013	42014	42015	\$31.85

Outdoor Grade Vinyl Tape

Labels adhere well to pipes, walls, equipment, doors – most clean, dry surfaces.

- Withstands temperatures from 180°F to -40°F

Description	Catalog #										Price
	White	Clear	Yellow	Green	Red	Blue	Orange	Black	Grey	Gold	Price
1/2" x 50' (13 mm x 15.2 m)	42018	42076	42022	42026	42030	42034	42038	42042	42046	42054	\$43.88
1" x 50' (25 mm x 15.2 m)	42019	42077	42023	42027	42031	42035	42039	42043	42047	42055	\$61.20
2" x 50' (51 mm x 15.2 m)	42021	42079	42025	42029	42033	42037	42041	42045	42049	42057	\$91.85

TLS 2200® Thermal Labeling System

www.bradyd.com/tls2200

TLS2200®
THERMAL LABELING SYSTEM



- Permanent, Quick, Crisp Labels
- Built-in Electrical and Voice/Data Symbols
- Autotext Sizing TLS 2200® reads your label size and style, selects the most suitable type size, and instantly registers it for printing
- Variable Font Sizes from 1 (4 point) to 19 (72 point)

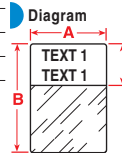
TLS 2200® & Accessories

Catalog #	Description	Price
TLS2200	Printer (Includes hard case, battery pack, battery charger, test labels (PTL-19-423), R6210 ribbon, cleaning strip, communications cable, manual and Quick Start Guide)	\$795.00
R4310	Black Ribbon	\$26.83
R6010	Black Ribbon	\$26.83
R6210	Black Ribbon	\$26.83
TLS2200-AC	AC Power Supply	\$117.93
TLSHM-QUICKCH	Battery Quick Charger	\$115.49



TLS 2200® Arc Flash Labels

Catalog No.	Size HxW (mm)	Pre-Printed Header	Price
PTL-37-483-DANGER	1.9" x 3.0" (48.26 x 76.20)	Danger	\$44.67
PTL-37-483-WARNING	1.9" x 3.0" (48.26 x 76.20)	Warning	\$44.67
PTL-38-483-DANGER	1.9" x 4.0" (48.26 x 101.60)	Danger	\$53.67
PTL-38-483-WARNING	1.9" x 4.0" (48.26 x 101.60)	Warning	\$53.67



Self-Laminating Labels Applications: Wire/cable Labels

B-427 - Self-laminating, self-extinguishing vinyl with permanent acrylic adhesive

Catalog #	Labels per Roll	Dimensions -Inches (mm)			Approx. Wire Gauge	Suggested Ribbon	Price
		A	B	C			
PTL-31-427	250	1.000 (25.40)	1.500 (38.10)	0.500 (12.70)	10 to 4	R4310	\$42.67
PTL-19-427	250	1.000 (25.40)	1.000 (25.40)	0.375 (9.53)	12 to 10	R4310	\$33.36
PTL-11-427	500	0.500 (12.70)	0.750 (19.05)	0.375 (9.53)	16 to 10	R4310	\$34.69
PTL-21-427	100	1.000 (25.40)	2.500 (63.50)	0.750 (19.05)	Cables	R4310	\$25.54
PTL-18-427	250	0.750 (19.05)	1.000 (25.40)	0.375 (9.53)	10 to 4	R4310	\$30.31
PTL-17-427	500	0.500 (12.70)	1.000 (25.40)	0.375 (9.53)	12 to 10	R4310	\$37.14
PTL-32-427	250	1.500 (38.10)	1.500 (38.10)	0.500 (12.70)	10 to 4	R4310	\$44.22
PTL-33-427	100	1.500 (38.10)	4.000 (101.60)	1.000 (25.40)	Cables	R4310	\$41.17
PTL-30-427	250	0.750 (19.05)	1.500 (38.10)	0.500 (12.70)	10 to 4	R4310	\$33.85
PTL-23-427	100	1.000 (25.40)	4.00 (101.60)	1.000 (25.40)	Cables	R4310	\$30.42
PTL-29-427	500	0.500 (12.70)	1.500 (38.10)	0.500 (12.70)	10 to 4	R4310	\$45.45

PermaSleeve™ Heat-Shrink Sleeves Applications: Wire & Cable Markers

B-342 - Permasleeve - Heat-shrinkable self-extinguishing, polyolefin sleeves

Catalog #	Labels per Roll	Dimensions -Inches (mm)		Approx. Wire Gauge	Suggested Ribbon	Price
		A	B			
PSPT-125-1-WT	100	1.015 (25.78)	0.235 (5.96)	22 to 16	R4310	\$45.20
PSPT-250-1-WT	100	1.015 (25.78)	0.439 (11.15)	16 to 10	R4310	\$60.97
PSPT-187-175-WT	100	1.765 (44.83)	0.335 (8.50)	18 to 12	R4310	\$67.43
PSPT-250-175-WT	100	1.765 (44.83)	0.439 (11.15)	16 to 10	R4310	\$82.10
PSPT-375-1-WT	100	1.015 (25.78)	0.645 (16.38)	12 to 6	R4310	\$89.81
PSPT-375-175-WT	100	1.765 (44.83)	0.645 (16.38)	12 to 6	R4310	\$120.82
PSPT-125-175-WT	100	1.765 (44.83)	0.235 (5.96)	22 to 16	R4310	\$60.71

General Pre-Cut & Wrap Around Labels Applications: Wire/Cable, Panel/Component ID & General ID

B-498 - Vinyl cloth with repositionable rubber based adhesive

B-499 - Nylon cloth with permanent acrylic based adhesive

Catalog #	Labels per Roll	Dimensions -Inches (mm)		Approx. Wire Gauge	Suggested Ribbon	Price
		A	B			
PTL-11-499	500	0.500 (12.70)	0.750 (19.05)	16 to 10	R4310, R6210 or R6010	\$42.76
PTL-19-499	250	1.000 (25.40)	1.000 (25.40)	12 to 10	R4310, R6210 or R6010	\$38.36
PTL-18-499	250	0.750 (19.05)	1.000 (25.40)	12 to 10	R4310, R6210 or R6010	\$35.31
PTL-11-498	500	0.500 (12.70)	0.750 (19.05)	16 to 10	R6210	\$41.79
PTL-21-498	100	1.000 (25.40)	2.500 (63.50)	Cables	R6210	\$30.67
PTL-18-498	250	0.750 (19.05)	1.000 (25.40)	12 to 10	R6210	\$34.57

The Industry's Most Powerful Wire & Cable Marking System



Wire & Cable Self-Laminating



Wire & Cable Wrap Around



Wire & Cable PermaSleeves



Property & Asset ID



Face Plate ID



Voice / Data Labels

IDXPERT™ Handheld Labeler

www.bradyid.com/idxpert



ABC Layout

Keyboard Layout

Two Keypad Layouts. Identical Functionality & Supplies



Adhesive Wrap-Around (B-498)



Self-Laminating (B-427)



Permasleeve Sleeves (B-342)



Facility & Safety ID (B-580)



Bins & Storage ID (B-580)



Voice/Data Labels (B-422)

- Prints Fast & Clean
- Quick Loading Drop, Lock & Print "Smart" Cartridges
- 82 Symbols & Barcodes

Facility & Safety Labels

5 Year Indoor/Outdoor Durability - Perfect for pipes, walls, doors shelving, bins, equipment and more!

B-580 - Vinyl Tape w/permanent adhesive (Temp. Range: -40°F - 248°F)

Tape width			
Color	(30' rolls)	Catalog #	Price
BK on WT	0.5"	XC-500-580-WT-BK	\$43.76
BK on WT	1.0"	XC-1000-580-WT-BK	\$55.05
BK on WT	1.5"	XC-1500-580-WT-BK	\$65.07
BK on OR	0.5"	XC-500-580-OR-BK	\$43.76
BK on OR	1.0"	XC-1000-580-OR-BK	\$55.05
BK on OR	1.5"	XC-1500-580-OR-BK	\$65.07
BK on YL	0.5"	XC-500-580-YL-BK	\$43.76
BK on YL	1.0"	XC-1000-580-YL-BK	\$55.05
BK on YL	1.5"	XC-1500-580-YL-BK	\$65.07
WT on RD	1.5"	XC-1500-580-RD-WT	\$65.07
WT on GN	1.5"	XC-1500-580-GN-WT	\$65.07
WT on BL	1.5"	XC-1500-580-BL-WT	\$65.07
RD on WT	1.5"	XC-1500-580-WT-RD	\$65.07

IDXPERT™ Printer & Accessories

Catalog #	Description	Price
XPRT-ABC	IDXPERT™ Printer* (ABC Layout)	\$399.95
XPRT-KEY	IDXPERT™ Printer* (Keyboard Layout)	\$399.95
XPRT-AC	AC Adapter (for ABC or KEY printers)	\$59.95

*Printer ships with: Hardside case, 1.5" x 30' continuous tape, PC cable, & product CD w/driver.

Wire & Cable Markers - Adhesive Wrap-Around

Durable white vinyl cloth marker stays in place, but can be removed cleanly and reapplied. Printer automatically "multiple repeats" your text.

B-498 - Vinyl Cloth material (Temp. Range: -40°F - 175°F)

Catalog #	Labels/ Cart.	Dimensions -Inches (mm)			Wire Gauge	Price
		A	B			
X-11-498	275	0.500 (12.70)	0.750 (19.05)	16 to 10 Gauge	\$41.35	
X-18-498	225	0.750 (19.05)	1.000 (25.40)	12 to 10 Gauge	\$42.52	
X-162-498	165	0.500 (12.70)	1.500 (38.10)	10 to 4 Gauge	\$37.31	
X-21-498	95	1.000 (25.40)	2.500 (63.50)	3 Gauge - 2/0	\$36.24	

Wire & Cable Markers - Permasleeve Sleeves

The ultimate in marker durability, performance and aesthetic appearance. These full circle, "FAST-heat-shrink" sleeves save time and cost during installation.

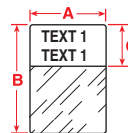
B-342 - Heat Shrink Polyolefin material 3-to-1 shrink ration, self extinguishing (Temp. Range: -67°F - 275°F)

Catalog #	Labels/ Cart.	Dimensions -Inches (mm)			Wire Gauge	Price
		A	B			
XPS-125-1	100	1.015 (25.78)	0.235 (5.9)	22 to 16 Gauge	\$51.28	
XPS-125-Cont 1	Roll	8ft. (2.45m)	0.235 (5.9)	22 to 16 Gauge	\$44.50	
XPS-187-1	100	1.015 (25.78)	0.335 (8.5)	18 to 12 Gauge	\$56.29	
XPS-187-Cont 1	Roll	8ft. (2.45m)	0.335 (8.5)	18 to 12 Gauge	\$48.87	
XPS-250-1	100	1.015 (25.78)	0.439 (11.15)	16 to 10 Gauge	\$67.57	
XPS-250-Cont 1	Roll	8ft. (2.45m)	0.439 (11.15)	16 to 10 Gauge	\$53.79	
XPS-375-1	100	1.015 (25.78)	0.645 (16.38)	12 to 6 Gauge	\$97.62	
XPS-375-Cont 1	Roll	8ft. (2.45m)	0.645 (16.38)	12 to 6 Gauge	\$78.84	

Wire & Cable Markers - Self Laminating

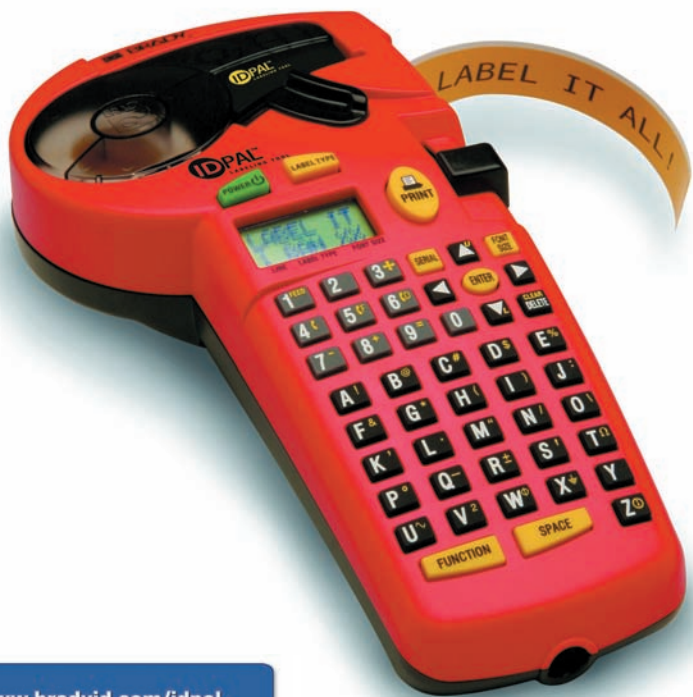
Protected printing - marker features a non-printed clear overlamine that wraps around and protects printed area. Printer automatically "multiple repeats" your text.

B-427 - Self Laminating Vinyl material, resistant to water, oil, solvents and abrasion (Temp. Range: -94°F - 158°F)



Catalog #	Labels per Cartridge	Dimensions -Inches (mm)			Wire Gauge	Price
		A	B	C		
XSL-96-427	250	1.000 (25.40)	0.750 (19.05)	0.375 (9.53)	16 to 10 Gauge	\$33.75
XSL-18-427	250	0.750 (19.05)	1.000 (25.40)	0.375 (9.53)	12 to 10 Gauge	\$38.76
XSL-19-427	250	1.000 (25.40)	1.000 (25.40)	0.375 (9.53)	12 to 10 Gauge	\$43.76
XSL-32-427	227	1.500 (38.10)	1.500 (38.10)	0.500 (12.70)	10 to 4 Gauge	\$58.79
XSL-103-427	250	1.000 (25.40)	1.250 (31.75)	0.500 (12.70)	10 to 14 Gauge	\$50.04
XSL-31-427	250	1.000 (25.40)	1.500 (38.10)	0.500 (12.70)	10 to 4 Gauge	\$52.54
XSL-21-427	100	1.000 (25.40)	2.500 (63.50)	0.750 (19.05)	3 Gauge-2/0	\$35.00
XSL-116-427	100	1.500 (38.10)	2.500 (63.50)	0.750 (19.05)	3 Gauge-2/0	\$35.00
XSL-33-427	85	1.500 (38.10)	4.000 (101.60)	1.000 (25.40)	3/0-400 kcmil	\$56.29

IDPal™ Labeling Tool



www.bradyid.com/idpal

- Extremely easy to use
- Affordably priced
- Creates small labels from 3/8" to 3/4" wide
- Super-tough industrial labels even stick to rough, curved or textured surfaces
- Rugged construction... withstands a 4 ft. drop onto concrete

Indoor/Outdoor Grade Vinyl Tape

B-439 - Super-tough vinyl tape – perfect for voice, data, audio, video, HVAC control, bins, safety and electrical applications

	Black	Black	Black	Black	Black	Black	
	Black/White	Black/Yellow	Black/Red	Black/Blue	Black/Green	Black/Orange	Price
3/8" x 21' (9mm x 6.4m)	PAL-375-439	PAL-375-439-YL	PAL-375-439-RD	PAL-375-439-BL	PAL-375-439-GR	PAL-375-439-OR	\$19.67
1/2" x 21' (12mm x 6.4m)	PAL-500-439	PAL-500-439-YL	PAL-500-439-RD	PAL-500-439-BL	PAL-500-439-GR	PAL-500-439-OR	\$19.67
3/4" x 21' (18mm x 6.4m)	PAL-750-439	PAL-750-439-YL	PAL-750-439-RD	PAL-750-439-BL	PAL-750-439-GR	PAL-750-439-OR	\$22.78

Wire & Cable Wrap Around Marking

Built-in wire marking mode with 10 preset lengths makes wire ID fast and easy.

B-499 - Nylon cloth for wrap around wire and cable markers

General Use Polyester Tape

Great for Voice/Data applications. Prints up to 4 lines of print.

B-423 - Polyester tape for smooth, flat surfaces

B-430 - Clear Polyester tape for smooth, flat surfaces

	Black		Black	Black		
	Black/White (B-499)	Price	Black/White (B-423)	Black/Clear (B-430)	Price	
3/8" x 19' (9mm x 5.79m)	PAL-375-499	\$25.24	3/8" x 21' (9mm x 6.4m)	PAL-375-423	PAL-375-430	\$18.64
1/2" x 19' (12mm x 5.79m)	PAL-500-499	\$25.24	1/2" x 21' (12mm x 6.4m)	PAL-500-423	PAL-500-430	\$18.64
3/4" x 19' (18mm x 5.79m)	PAL-750-499	\$28.54	3/4" x 21' (18mm x 6.4m)	PAL-750-423	PAL-750-430	\$18.64

An affordable label and wire marker designed for the tool box



Equipment ID (B-439)



Wire ID (B-499)



Tool & Asset ID (B-439)



Voice / Data ID (B-423)



Tool ID (B-439)



Bin ID (B-439)

...and many more.

GlobalMark® 2 Industrial Label Maker

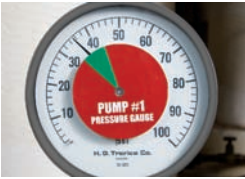
GLOBALMARK[®] 2

INDUSTRIAL LABEL MAKER



www.bradyid.com/globalmark

Touch... Print...
Presto!
Don't Settle for
a Generic
Message



Guage Labels



Graduated Ruler



Cut Characters



Arc Flash Labels



Pipemarkers



Equipment ID

GlobalMark® 2 Industrial Label Maker

Catalog #	Description	Price
76798	GlobalMark 2 MonoColor Model (prints 1 color)	\$2,495
76800	GlobalMark 2 MultiColor Model (prints multi spot, blended & full process color)	\$3,495
76801	GlobalMark 2 Color & Cut Model (prints same as MultiColor + cuts characters)	\$4,495
90835	Value Plus Package (MarkWare software, extended warranty, 1 roll tape + 1 ribbon)	\$685.29
102741	Quick Label Application Card (see website for more information)	\$53.45

Indoor/Outdoor Grade Vinyl Tape

Labels adhere well to walls, equipment, doors, pipes and most clean, dry surfaces - withstands temps. from 180°F to 140°F.

Description	Catalog #							Price
	White	Clear	Yellow	Green	Red	Blue	Orange	Price
4" x 100'	76542	97734	76547	76556	76552	76560	76594	\$221.98
2.25" x 100'	76544	97735	76549	76557	76553	76561	76595	\$147.97
1.125" x 100'	76545	97736	76550	76558	76554	76562	76596	\$98.63

Standard Glow Tape

Tape (B-582) glows in darkness 10 hours, meets ISO, DIN & ASTM standards



Description	Catalog #	Price
Std. Glow - 4/4" x 50'	76711	\$305.39
Std. Glow - 2 1/2" x 50'	76712	\$195.42
Std. Glow - 1 1/8" x 50'	76713	\$122.12

Visit www.bradyid.com for High-Intensity BradyGlo Tape

Specialty Tapes

- Reflective B-584 permanent adhesive & shines back at viewer brightly when light shines on label
- Magnetic B-509 is non-adhesive & prints direct on material

Description	Catalog Number				Price
Tape Cartridges	No. Per Pkg.				
Reflective (B-584)					
4" x 50'	1	76705	96060	99219	\$305.39
2 1/4" x 50'	1	76706	96061	99220	\$195.42
1 1/8" x 50'	1	76707	96062	99221	\$122.12
Magnetic (B-509)					
4 1/4" x 25'		N/A	76688	76686	\$122.12
2 1/2" x 25'		N/A	76689	76687	\$91.57

Super Tough, Smear-Proof Ribbons

Single Color Print Ribbon Cartridges \$103.79

Size	4.11" x 200 ft.				
	Black	White	Red	Blue	Green
Catalog #	76739	76741	76743	76745	76747

Two Color Print Ribbon Cartridges \$105.78

Size	4.11" x 8" panels, 200 ft. roll		
	Black/Red	Black/Yellow	Black/Orange
Catalog #	76763	76767	76771

MiniMark™ Industrial Label Printer



www.bradyid.com/minimark

MINIMARK™
INDUSTRIAL LABEL PRINTER



The new Brady MiniMark™ Industrial Label Printer offers an affordable sign and label making solution that is compact, fast, and incredibly versatile.

- **VERSATILE** - Uses continuous tapes for multiple applications
- **EASY** - Supplies are easy to load
- **FAST** - Prints up to three inches per second
- **COMPACT** - Doesn't take up a lot of space only 8"H x 10.25"D x 7"H

MiniMark™ Printer

Catalog #	Description	Price
52041	MiniMark™ Industrial Label Printer (Surf on Signs Software, USB cable, quickstart, power cord and cleaning kit)	\$1,195.00
52159	ValuePLUS Package for MiniMark™ (Includes: 1 roll each 4" and 2.25" white vinyl tape; MarkWare™ software; and 1 roll of black ribbon)	\$595.00

The Next Small Thing in Fast Labeling



Labels



Pipe & Valve ID



General ID



Equipment ID



Bin & Shelf ID



Wire Markers

Standard Indoor/Outdoor Vinyl Tape

Tape Cartridges, 1 per pkg.

Description	Catalog #							Price
	White	Clear	Yellow	Green	Red	Blue	Orange	
4" x 110'	52087	52086	52090	52093	52091	52094	52096	\$125.95
2.25" x 110'	52074	52073	52075	52077	52076	52078	52079	\$89.20
1.125" x 110'	52062	52060	52063	52065	52064	52066	52067	\$57.70

B-588 Indoor/Outdoor Vinyl Tape

1 per pkg.

Description	Catalog #												Price
	White	Clear	Yellow	Green	Red	Blue	Orange	Black	Grey	Purple	Gold	Brown	
.5" x 100'	102940	102939	102941	102943	102942	102944	102945	102946	102947	102950	102948	102949	\$61.90
1.125" x 100'	102952	102951	102953	102955	102954	102956	102957	102958	102959	102962	102960	102961	\$94.45
2.25" x 100'	102964	102963	102965	102967	102966	102968	102969	102970	102971	102974	102972	102973	\$132.25
4" x 100'	102976	102975	102977	102979	102978	102980	102981	102982	102983	102986	102984	102985	\$188.95

White Vinyl w/ Preprinted Stripe (B-588)*

1 roll per pkg.



Description	Catalog #			
	Yellow Stripe	Orange Stripe	Red Stripe	Price
2.25" x 100' (w/ 1/2" stripe)	110349	110348	110347	\$142.25
3" x 100' (w/ 3/4" stripe)	102995	103011	103013	\$177.95
4" x 100' (w/ 1" stripe)	102996	103010	103012	\$198.95

*Use ribbons for B-588 tape

Ribbons For B-588 Vinyl

Tape Cartridges, 2 per pkg. Price: \$157.45

Description	Catalog #						
	White	Black	Red	Green	Yellow	Blue	Orange
4" x 290'	103026	103025	103027	103029	103030	103028	103031

Ribbons for Standard Vinyl

Tape Cartridges, 2 per pkg. 4.4" x 290'

Description	Catalog #					Price
	White	Black	Red	Blue	Green	
4" x 290'	52044	52042	52045	52047	52059	\$102.85

PowerMark® Sign & Label Maker

Benchtop Printers



Custom Signs on the Spot When You Need Them



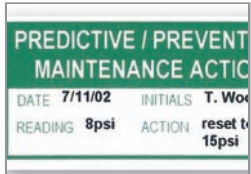
Equipment I.D.



Security Procedures



Emergency Evacuation Signs



Special Events



Hazard Notification



Stairwell Signs

Catalog #	Description	Price
13500	PowerMark® Sign and Label Maker (Includes: Printer, keyboard, parallel cable and USB cable)	\$4,995.00
80712	Value Plus Package (MarkWare software, extended warranty, 1 roll tape + 1 ribbon)	\$709.52

Indoor/Outdoor Grade Vinyl Tape

Signs adhere well to walls, doors, and most clean, dry surfaces - withstands temps. from 180°F to 140°F.

Description	Catalog #							Price
	Clear	White	Yellow	Red	Blue	Green	Orange	Price
4" x 50'	59529	13538	13539	13540	13541	13542	13543	\$125.95
7" x 50'	N/A	13651	13652	13654	13656	13655	13653	\$89.20
10" x 50'	59532	13562	13563	13610	13611	13612	13613	\$57.70

Standard Glow Tape

Tape (B-582) glows in darkness for 10 hours and meets ISO, DIN & ASTM standards

- Customize your stairwell signs



Size	Catalog #	Price
4" x 33'	13582	\$180.08
7" x 33'	13587	\$249.36
10" x 33'	13592	\$332.51

Visit www.bradyid.com for High-Intensity BradyGlo Tape

Reflective B-584 Tape

- Reflective capabilities are ideal for reading labels in low light conditions with a flashlight or from a vehicle

Description	Catalog Number		Price
	Silver	Yellow	Price
4" x 33'	13580	51584	\$180.08
7" x 33'	13585	51585	\$249.36
10" x 33'	13590	51586	\$332.51

Industrial Grade Ribbons

1 Color Ribbon

Size	Catalog #					Price
	Black	White	Red	Blue	Green	Price
6.25" x 200'	13511	13513	13595	13596	13597	\$166.22
8.8" x 200'	13510	13512	13514	13515	13516	\$187.00

2 Color Paneled Ribbons - 8" long panels

Size	Catalog #	Price
	Black/Red	Price
6.25" x 200'	13523	\$193.93
8.8" x 200'	13522	\$214.71

2 Color Paneled Ribbons - 15" long panels

Size	Catalog #			Price
	Black/Red	Black/Green	Black/Yellow	Price
6.25" x 200'	13521	13705	N/A	\$193.93
8.8" x 200'	13520	13707	13526	\$214.71

4 Color Paneled Ribbons - 15" long panels

Size	Catalog Number		Price
	Blk/Red/Blu/Ylw	Blk/Red/Blu/Grn	Price
6.25" x 200' (158mm x 60.8m)	13531	13535	\$249.36
8.8" x 200' (224mm x 60.8m)	13530	13534	\$277.08

(used to create 4 color signs up to 15" long)



www.bradyid.com/markware

Cat. No.	Description	Price
20700	MarkWare Software Kit	\$599.00
20711	MarkWare Software Kit + Laminator	\$699.00
20700L	MarkWare LEAN Tools Kit	\$2,495.00
20711L	MarkWare LEAN Tools Kit + Laminator	\$695.00

MarkWare™ Facility Identification Software

All Your Safety and Facility Needs in One Powerful Package.

- Use your PC to quickly design professional looking signs and labels
- Print directly to a Brady labeling system or most Windows™ inkjet/laser printers
- Preformatted templates make sign and label creation quick and easy - or, customize layouts to your own specs
- Import logos and photos or create bar codes using 15 different symbologies
- Link label contents to information stored in spreadsheets and databases
- MarkWare's built-in library gives you ready access to over 1000 high-quality, scalable safety symbols and industrial pictograms



NEW! MARKWARE™ Lean Tools software includes all of the features and functionality of MARKWARE™ Facility Identification software, plus new tools to support and sustain your lean transformation. Whether you are implementing 5S, Total Productive Maintenance, Standard Work, Kanban, or other lean concepts, MARKWARE software helps you post critical information at the point of use. Employees gain the knowledge they need to work effectively and efficiently.

- Achieve faster machine setups and changeovers
- Detect operating abnormalities at a glance and at a distance
- Simplify training of operators and other non-technical staff responsible for routine machine inspection and care.
- Enable more efficient route-based monitoring of numerous PM points in condition-based maintenance programs.

Complete Labeling Solutions



Sign & Label Blanks for MarkWare™ Software

- Adhesive backed polyester sign blanks are compatible for use with inkjet and laser printers

Description	Catalog #								Price
	CAUTION	WARNING	NOTICE	SAFETY FIRST	BLANK	BLANK	BLANK	BLANK	
3½" x 5" (4 labels/sheet)	12906	12909	12912	12923	13029	12900	12903	12926	\$68.94
5" x 7" (2 labels/sheet)	12907	12910	12913	12922	13028	12901	12904	12925	\$68.94
7" x 10" (1 label/sheet)	12908	12911	12914	12921	13027	12902	12905	12924	\$68.94

Safety Information Centers



Right To Know Compliance Center

- Compliance center includes red polystyrene board, binder rack and MSDS binder (2023)
- 1.5" MSDS binder w/ 300 sheet capacity
- Center size: 20"H x 14"W x 4 1/2"D

Description	Cat No.	Price
Compliance Center	2010	\$66.81
Compliance Center w/o binder	2010NB	\$52.53
Spanish Compliance Center	2010SP*	\$66.81

*Board is Spanish with Bilingual Binder (2026)



Double Right To Know Compliance Center

- This center includes red polystyrene board, 2 binder racks and two MSDS binders
- Center size: 20"H x 29"W x 4 1/2"D

Description	Cat No.	Price
Double RTK Compliance Center	2010DB	\$126.83
Spanish Double RTK Center*	2010DBSP	\$126.83

*Board is Spanish with Bilingual Binder (2026)



Economy Right To Know Center

- Includes MSDS "V" sign, 8"H x 14 1/2"W x 6"D
- 1.5" MSDS binder w/ 300 sheet capacity

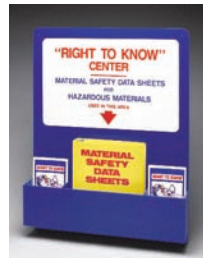
Description	Cat No.	Price
Economy RTK Center	2007	\$76.77
Rack & Binder w/inserts	RK085A	\$57.41



Binder Holders

- PVC coated steel racks designed for holding binders up to 3" ring diameter
- Size: 9"H x 14"W x 4 1/2"D

Description	Cat No.	Price
Yellow Binder Holder	2014	\$29.47
White Binder Holder	2014W	\$29.47



Standard Right To Know Center

- Tough acrylic RTK board can hold up to 100 training booklets and our largest MSDS binder
- Includes our 1 1/2" binder and 10 training booklets
- Center size: 30"H x 24"W x 4 1/2"D

Description	Cat No.	Price
Standard Right to Know Center	2001	\$135.79
Board Only	2012	\$108.66
Bilingual version*	2002	\$135.79

*includes 5 English booklets, 5 Spanish booklets and a bilingual binder



MSDS Metal Cabinet

- Made of 20 gauge powder coated steel
- Wall mountable
- Front panel pulls down to reveal a guide to Haz-Mat labels
- Equipped center includes:
 - 2 - 2 1/2" MSDS Binders (2024)
 - 25 - Right To Know training booklets (2101)
 - 1 - Binder training insert (BR801B),
- Cabinet size: 22 1/2"H x 26 1/2"W x 6"D

Description	Cat No.	Price
MSDS Metal Cabinet	RK623E	\$281.86

Didn't Find the Product You were Looking For?
View our full offering:
www.bradyid.com



Safety Information Centers



MSDS/Job Site Safety Document Center

- Holds one 3-ring binder in a very rugged, weather resistant and lockable polystyrene case.
- Table top or wall mount.
- Center size: 13¹/₂"H x 13¹/₂"W x 4³/₄"D

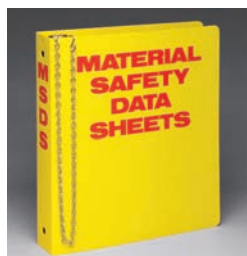
Description	Cat No.	Price
MSDS/Job Site Center	JS1	\$102.42



Information Centers

- Rugged red poly backboard comes with white PVC coated wire basket, which allows for high visibility and convenience of holding important papers
- Tear resistant 3-ring binder holds approximately 300 sheets and comes with an attachable chain
- Mounting hardware included
- Center size: 20"H x 14"W

Description	Cat No.	Price
Emergency Information Center	IC326E	\$66.81



Standard MSDS Binders

- 1¹/₂" diameter rings hold 275-300 sheets, 2¹/₂" diameter ring holds 400-500 sheets and 3" diameter ring hold 600 sheets
- These binders have a durable Polyethylene cover, 36" chain and pair of sheet lifters

Description	Cat No.	Price
Standard Binder (1 ¹ / ₂ " ring)	2023	\$19.23
Bigger Binder (2 ¹ / ₂ " ring)	2024	\$26.91
Biggest Binder (3" ring)	2025	\$28.18
Bilingual Standard Binder (1 ¹ / ₂ " ring)	2026	\$19.23
Bilingual Bigger Binder (2 ¹ / ₂ " ring)	2027	\$26.91

*Insert is catalog #BR801B - see below for details



MSDS Training Binder Insert

This detailed binder insert package contains:

- OSHA Haz-Com Standard highlights and overview of program requirements
- Compliance checklist
- Two 15 page RTK training booklets, Spanish/English
- Mini RTK poster (Spanish/English)
- 50 clear sheet protectors
- A-Z index tabs
- Binders sold separately to the left

Description	Cat. No	Price
Binder Insert	BR801B	\$12.50



Standard Operating Procedures Center

- Poly backboard w/ white PVC coated wire basket
- Rugged binder holds approximately 300 sheets and comes with an attached chain

Description	Cat No.	Price
Procedures Center	SM681A	\$69.77



Lockout Procedure Station

- Backboard made from durable polystyrene
- Includes pre-drilled holes and hardware for wall mounting
- 3-ring, 1.5" binder made from 55 gauge polyethylene
- Backboard dimensions: 20"H x 14"W x 4.5"D

Description	Cat No.	Price
Station With Binder & 25 Forms	LOSP22	\$73.59

www.bradyid.com/safetycenters



Suggestion Box

- Black acrylic box features a lockable top and side pocket
- Pocket measures 5"H x 4"W x 1³/₈"D
- Top drop slot is 9" wide. Wall or table mount
- Box Dimensions: 12"H x 11³/₄"W x 4³/₄"D

Description	Cat No.	Price
Suggestion Box	MC111E	\$97.19

Training Materials & Posters



Right To Know Training Books

- 15 page RTK training booklet
- Available in English or Spanish
- Sold in packages of 10 or 25

Description	Cat No.	Price
English - 10 Pack	2101-TEN	\$12.15



OSHA Record Keeping Center

- OSHA requires all companies with 11 or more employees to prepare, maintain and post records of work related illnesses and injuries

Description	Cat No.	Price
OSHA Record Keeping Center	OR305E	\$128.69



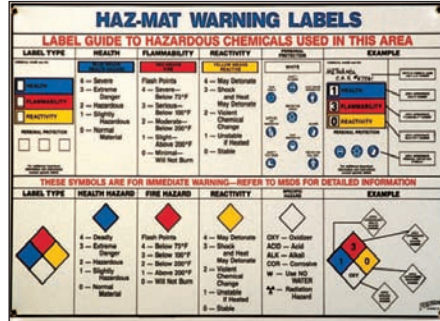
Poster Holder

- Clear acrylic holder holds 18" x 24" posters

Description	Cat No.	Price
Poster Holder	SH1824	\$56.21

Laminated Safety Posters

- Laminated safety posters are designed to provide continued reinforcement of your ongoing safety program
- Concise, easy to understand explanations of key safety topics and their specific issues
- All posters are laminated on both sides
- 24" w x 18" h



53119 - Haz Mat Warning Chart - \$30.98



53200(English) | 53201(Spanish) - \$30.98



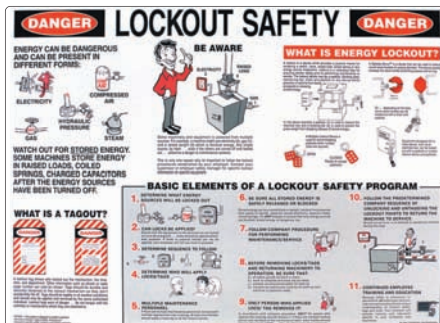
PS128E - Emergency First Aid - \$23.48



FLSP - Forklift Safety - \$23.48



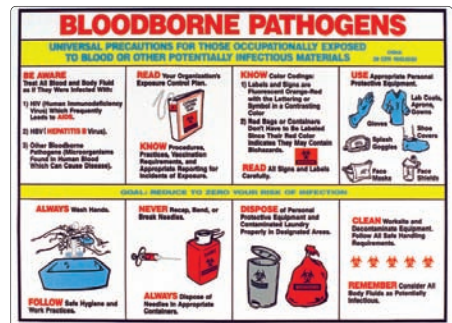
BLSP - Back Lift Safety - \$23.48



LOSP8 - Lockout Safety - \$23.70



FESP - Fire Extinguisher Safety - \$23.48



PS125E - Bloodborne Pathogens - \$23.48

Hazard Communication (RTK)

OSHA Standards

The Occupational Safety and Health Administration (OSHA) Federal Hazard Communication Standard 29 CFR 1910.1200 has become known as the "Right-To-Know" law. This standard gives both employers and employees a right-to-know about the hazardous chemicals they use in the workplace. It is designed to reduce the incidence of chemical source injury and illness in the workplace.

In order to accomplish this, employers are required to:

1. Have Material Safety Data Sheets (MSDS) on file for every hazardous chemical in the workplace available to all employees during their work shift.
2. Train employees about the potential hazards, how to identify and safely work with hazardous chemicals and the proper personal protection

necessary when working with hazardous chemicals. Employees must be trained before they start a work assignment.

3. Identify and list all of the hazardous chemicals in the workplace.
4. Have a written hazard communication program available for employees, OSHA and outside contractors who enter the workplace.
5. Have labels on all hazardous chemical containers that:

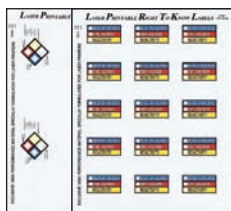
- List the name and address of the manufacturer
- List the chemical name
- List the type of potential hazard that exists
- List the precautions necessary
- List target organ information
- Are easily related to the appropriate MSDS on file

6. Maintain reports, records and logs for the entire program.

7. Certain states require that you report all of this information to a state agency, department of labor, health department or fire department depending on the state law that is in effect.

Hard work is necessary to come into compliance with the law. Brady offers a wide variety of products to keep your work to a minimum, while enabling you to implement a complete program that will bring your company into compliance with the Hazard Communication Standard.

www.bradyid.com/hazardmarking



RTK Blank Labels for MarkWare or ChemLabel Software

- Use MarkWare™ or ChemLabel™ Software (sold separately) to create your own Right-To-Know Container Labels
- Compatible for use with most laser printers



Hazardous Information Placards

- Placards graphically explain the NFPA Hazard Identification Coding System
- B-120 premium fiberglass

NFPA Version	Material	Size	Cat No.	Price
B-120	10" x 14"	78788	\$23.93	

NFPA Diamond w/ Hazard Classification			
	3½" x 5"	2" x 2"	Price
Vinyl-NFPA	59254	59255	\$68.94
Paper-NFPA	-	59263	\$41.37
Vinyl-ColorBar	-	59243	\$68.94
Paper-ColorBar	-	59247	\$41.37



Blank NFPA Placards

- Place directly on storage tanks, processing tanks and vessels, feed hoppers, pipelines and other potentially hazardous equipment
- Meets National Fire Protection Association's Code No. 704M and Federal Standard 313
- Add Gothic style Quik-Align® numbers and letters (sold separately) to mark the corners of your signals

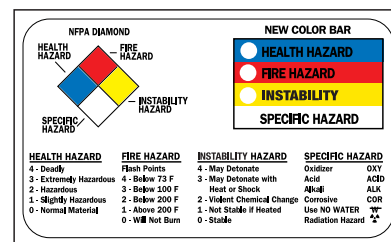
Material	Size	# per Pack	Cat. No.	Price
B-120 Fiberglass	11" sq.	1	58656	\$20.65
B-120 Fiberglass	16" sq.	1	58510	\$37.21
B-946 Vinyl	5" sq.	10	58501	\$29.35
B-946 Vinyl	10" sq.	10	58503	\$109.24
B-946 Vinyl	15" sq.	10	58504	\$209.51



NFPA Placard Kits

- Vinyl kits come complete with 10 blank NFPA placards, and 10 characters each of 0-4, W, ☠, OXY, ACID, COR and ALK
- Fiberglass kits come complete with 1 blank NFPA placard, and 10 characters each of 0-4, W, ☠, OXY, ACID, COR and ALK

Material	Placard Size	Charac. Size	Cat No.*	Price
B946 Vinyl	10" sq	4"	50053	\$196.66
B120 Fiberglass	11" sq	4"	50055	\$132.34
B946 Vinyl	15" sq	6"	50054	\$320.76
B120 Fiberglass	16" sq	6"	50056	\$209.26



Front

RTK Wallet Card

- Handy reference of the NFPA Hazard Identification Coding System
- Ideal for distribution to employees following formal hazard communication training
- Card size: 2 1/8" x 3 3/8"
- Standard package: 25 cards

Catalog Number	Description	Price
58515	English	\$58.20
89257	Spanish	\$58.20

Hazardous Material Shipping

CLASS 3:



CLASS 8:



Vehicle Placards

- Placards meet D.O.T. Requirements HM-181 requirements
- B-946 self-sticking vinyl (SSV) placards may be applied directly to your vehicle and provide over 5 years outdoor durability
- Placards have square corners and no holes
- Placard size: 10¾" x 10¾"

Description	Cat No.	Price
Flammable	63409	\$4.16
Corrosive	63420	\$4.16



Placards for General Commodities

- Flip-File Frame holds three placards
- Approved for use by private and fleet carriers
- Available in one-piece or split frame versions
- Explosive 1.4
- Blasting Agents 1.5d
- Flammable Gas 2
- Inhalation 2
- Non-Flammable Gas 2
- Flammable 3
- Spontaneously Combustible 4
- Dangerous When Wet 4
- Flammable Solid 4
- Oxidizer 5.1
- Organic Peroxide 5.2
- Inhalation 6
- Poison 6
- Corrosive 8
- Misc. 9
- Dangerous
- Blank

Description	Cat No.	Price
General Commodities	59955	\$57.52



Placards for Cargo Tanks

- Flipping numerals give you the flexibility to set-up any 4-digit identification number in seconds
- Conveniently flip to a new number and placard when your load changes
- Durable, heavy-duty aluminum frame assures stability in the wind and saves money on placard replacement costs

Legends Included

- Blank
- Flammable 3
- Corrosive 8
- Combustible 3
- Poison 6

Description	Cat No.	Price
Cargo Tank Placard	63214	\$75.21



Placards for Welding Supply and Medical Vans

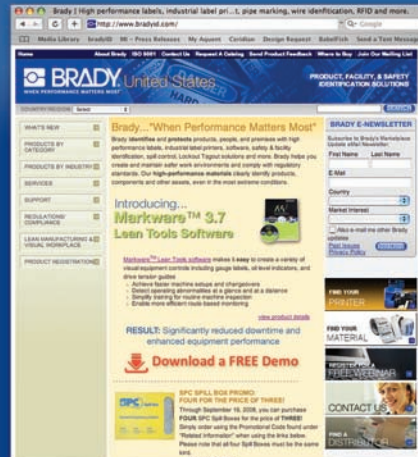
- Standard Flip-File Systems contain three or more panels in one frame
- Self-contained placards slide easily on four aluminum hinges
- Four stainless steel fasteners securely lock in your chosen legend
- Deep-formed aluminum frame provides stability and excellent wind protection

Legends Included

- Blank
- Flammable Gas 2
- Non-Flammable Gas 2
- Oxygen 2

Description	Cat No.	Price
Welding/Medical Supplies	63200	\$25.81

Didn't Find the Product You were Looking For?
View our full offering:
www.bradyid.com



ASME A13.1

Recommends the use of a permanently legible tag for identification of materials in pipes less than 3/4" (19mm) in diameter.



Blank Brass Valve Tags (B-907)

- Standard package: 25 identical tags

Size	Shape	Catalog Number	Price
1"	Round	23210	\$13.37
2"	Round	23211	\$15.35



Blank Stainless Steel Tags (B-748)

- Ideal for harsh environments or where a stainless steel material is specified
- Tag hole is 3/16"
- Standard package: 25 tags

Tag Size	Tag Shape	Catalog Number	Price
1 1/2"	Round	44400	\$42.90



#16 Jack Chain

- Approximately 25 links per foot
- Standard package: 50 feet of chain, sold in full packages only

Catalog Number	Material	Price
23308	Brass #16	\$42.80
98859	Stainless Steel	\$41.53



Stamped Brass Valve Tags (B-907)

- 19 gauge cartridge brass (40 mils thick)
- 1 1/2" diameter
- Standard package: 25 identical tags

Bottom Line Number Sequence	Catalog Number	Price
1 - 25	23200	\$33.90
26 - 50	23201	\$33.90
51 - 75	23202	\$33.90
76 - 100	23203	\$33.90



Solid "S" Hooks

- Standard package: 100 "S" Hooks, sold in full packages only

Catalog Number	Size	For Valve Stems Up To	Price
Brass			
23304	1 1/2" O.D.	3/8"	\$30.94
23303	1 1/4" O.D.	1/4"	\$29.30
Stainless Steel			
98860	1 3/4" O.D.	1/2"	\$35.42



Lead Seals

- 12" wires with pre-fitted lead seals fit easily around pipes or valves
- Use with Hand Sealing Press
- Standard package: 250

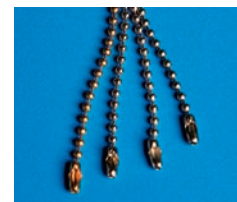
Catalog Number	Material	Price
23301	Copper	\$54.46



Blank Aluminum Tags (B-906)

- Anodized aluminum is dyed to offer color-coding options not available with brass tags
- Standard package: 25 tags

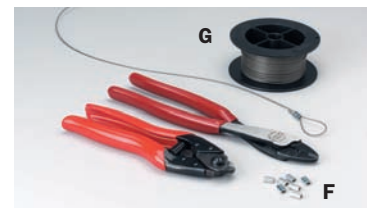
Tag Size	Shape	Color	Part #	Price
2" DIA.	Round	Natural	49909	\$48.18
1 1/2" DIA.	Round	Red	49901	\$32.07
1 1/2" DIA.	Round	Yellow	49900	\$32.07



4 1/2" Beaded Chain

- Standard package: 100 chains, sold in full packages only

Catalog Number	Description	Price
23306	#6 Brass	\$20.58



F. Brass Wire Clamps - Double Ferrule Design

- Use to secure or splice Stainless Steel Wire
- Standard package: 50

G. Stainless Wire (48 mil)

- 30' rolls

F. Brass Wire Clamps

Catalog Number	Price
38090	\$16.60

G. Stainless Steel Wire

Catalog Number	Price
38091	\$12.20

Self-Sticking Vinyl Pipe Markers



Self-Sticking Vinyl Pipe Markers

- Markers meet the requirements of the ASME (ANSI) A13.1 Standard for the identification of piping system contents when used with Directional Flow Arrow Tape
- Markers supplied on a coated backing material that makes handling and installation easy
- Marker ends should be banded with Brady Directional Flow Arrow Tape to indicate pipe content flow direction
- Durable B-946 material ideal for indoor and outdoor environments

Size Chart

Outside Diameter	Letter Height	Style Description	Order Style*	Price
8" or greater	3 1/2"	HEATING RETURN Style 1HV: One 4" x 24" marker per card	1HV	\$4.47
2 1/2" to 7 7/8"	2"	HEATING RETURN Style 1: One 2 1/4" x 14" marker per card	1	\$2.20
3/4" to 2 3/8"	3/4"	FIRE AUTO SPRINKLERS Style 4: Four 1 1/8" x 7" markers per card	4	\$2.20
less than 3/4"	1/2"	Style 3C: Three 2 1/4" x 2 3/4" markers per card plus 8 strips of Arrow Tape	3C	\$2.20

Legend	Background Color	Catalog No.
CHILLED WATER RETURN	Green	7046 -*
CHILLED WATER SUPPLY	Green	7047 -*
CITY WATER	Green	7054 -*
COLD WATER	Green	7055 -*
COMPRESSED AIR	Yellow	7058 -*
COMPRESSED AIR	Green	7059 -*
COMPRESSED AIR	Blue	7060 -*
CONDENSATE	Yellow	7061 -*
DOMESTIC COLD WATER	Green	7084 -*
DOMESTIC HOT WATER	Yellow	7087 -*
DOMESTIC HOT WATER RETURN	Yellow	7088 -*
FIRE AUTO SPRINKLERS	Red	7107 -*
FIRE PROTECTION WATER	Red	7110 -*
GAS	Yellow	7119 -*
HEATING RETURN	Yellow	7125 -*
HEATING SUPPLY	Yellow	7127 -*
HEATING WATER RETURN	Yellow	7129 -*
HEATING WATER SUPPLY	Yellow	7130 -*
HOT WATER	Yellow	7146 -*
HOT WATER RETURN	Yellow	7148 -*
HOT WATER SUPPLY	Yellow	7149 -*
MEDICAL AIR	Yellow	7184 -*
MEDICAL VACUUM	White	7186 -*
NATURAL GAS	Yellow	7196 -*
NITROGEN	Green	7198 -*
OXYGEN	Green	7210 -*
STORM DRAIN	Green	7273 -*



Directional Flow Arrow Tape

- Durable B-946 material withstands the elements indoors or out
- Provides 360° visibility
- Supplied in liner-mounted rolled form - use two bands per marker

Roll Size	Blk/Ylw	Wht/Grn	Wht/Rd	Price
1" x 30 yds	91424	91425	91426	\$25.54
2" x 30 yds	91420	91421	91422	\$51.01
4" x 30 yds	91287	91290	91288	\$101.99

Roll Size	Wht/Blu	Blk/Wht	Price
1" x 30 yds	91427	91413	\$25.54
2" x 30 yds	91423	91417	\$51.01
4" x 30 yds	91289	91409	\$101.99



Self Sticking Vinyl Arrows

- Mounted on easy-to-use dispenser cards
- Durable B-946 material withstands the elements indoors or out

Size	Blk/Ylw	Wht/Grn	Qty per Card	Price
2 1/4" x 7"	76507	76503	2	\$2.20
1 1/8" x 7"	93242	93257	4	\$2.20



Solid Color Pipe Banding Tape

- Durable B-946 material withstands the elements indoors or out
- Meets ASME color field size recommendation when used in combination with worded legends and directional flow arrows
- Supplied in liner-mounted rolled form
- Use two bands per marker

Roll Size	Yellow	Green	Red	Orange	Price
1" x 30 yds	36301	36304	36302	91428	\$20.56
2" x 30 yds	55260	55263	55261	91430	\$41.11
4" x 30 yds	36287	36290	36288	91432	\$82.20

NEW ASME(ANSI) Standard A13.1-2007

Visit www.bradyid.com/pmstandard to view the standard and to request your free printed sample

bradyid.com/pipemarkers

Snap-On & Strap-On Pipe Markers



BradySnap-On™ & Strap-On Pipe Markers

- Designed for pipes that have an outside diameter between ¾" and 6" (including insulation)
- May be applied to dirty, oily, greasy or rough surfaces
- All stock BradySnap-On™ Strap-On Markers meet ASME (ANSI) Standard
- Strap-On Supplied as a flat sheet with slots to accommodate Brady-Lock™ Fastener Straps. Styles F - H come with nylon straps

BradySnap-On™ Markers Size Chart

Outside Diameter	Letter Height	Style Description*	Price
¾" to 1½"	VALVE →	½"	Style A \$4.37
1½" to 2¾"	VALVE →	¾"	Style B \$6.02
2½" to 3½"	VALVE →	1¼"	Style C \$11.12
4" to 6"	VALVE →	1¾"	Style D \$11.91

Strap-On Style Marker Size Chart

Outside Diameter	Letter Height	Style Description	Price
6" to 7½"	AIR VALVE	1¼"	Style F \$12.30
8" to 9½"	AIR VALVE	2½"	Style G \$17.45
10" to 15"	AIR VALVE	3½"	Style H \$21.97

*When ordering, please indicate the catalog number for your desired legend followed by the letter code (F-H) that corresponds with your desired size and style.

Legend	Background Color	Catalog No.
(BLANK)	Yellow	4010*
CHILLED WATER RETURN	Green	4023 - *
CHILLED WATER SUPPLY	Green	4024 - *
COMPRESSED AIR	Blue	4034 - *
DOMESTIC COLD WATER	Green	4048 - *
DOMESTIC COLD WATER SUPPLY	Green	4050 - *
DOMESTIC HOT WATER	Yellow	4051 - *
FIRE PROTECTION WATER	Red	4060 - *
HOT WATER RETURN	Yellow	4081 - *
HOT WATER SUPPLY	Yellow	4082 - *
NATURAL GAS	Yellow	4097 - *



Custom Pipe Markers Available

Custom pipe markers are available. Visit www.bradyid.com/pipemarkers for more information

B-689 High Performance Pipe Markers

- PVF overlaminated polyester construction seals in and protects graphics
- Markers resist abrasion, chemicals, high humidity and outdoor weathering
- Ideal for pipes up to 7⅞" in diameter
- Choose from more than 125 stock legends or create your own custom legend

Size Chart

Outside Diameter	Max. Char. Per Marker	Letter Height	Style Description*	Price
½" to 1¾"	22	VALVE →	½"	Style O \$6.97
1½" to 2¾"	13	VALVE →	¾"	Style I \$9.05
2½" to 7⅞"	13	VALVE →	1¼"	Style II \$12.97

*When ordering, please indicate the catalog number for your desired legend followed by the letter code (O, I, II, or HPHV) that corresponds with your desired size and style.

Legend	Background Color	Catalog No.
Fire Protection Water	Red	5689*
Compressed Air	Blue	5660*
Condensate	Yellow	5662*
Hydraulic Fluid	Yellow	5710*
Mill Water	Green	5725*



Snap-On Cable Markers

- Fits on ½ diameter cables
- Pre-coiled for easy installation
- Use on dusty, dirty, oily or scaly pipe surfaces
- Printed on durable vinyl
- Outdoor durability from 5 to 8 years

Legend	Catalog Number	Background/ Legend	Length of Color Field	Price
Caution Fiber Optic Cable	47659	Orange/Black	5"	\$4.41

Labels

NFPA70 National Electric Code

110.16 Flash Protection

Switchboards, panelboards, industrial control panels, meter socket enclosures, and motor control centers that are in other than dwelling occupancies and are likely to require examination, adjustment, servicing, or maintenance while energized shall be field marked to warn qualified persons of potential electric arc flash hazards. The marking shall be located so as to be clearly visible to qualified persons before examination, adjustment, servicing, or maintenance of the equipment.

FPN No. 1:

NFPA 70E-2004, Standard for Electrical Safety in the Workplace, provides assistance in determining severity of potential exposure, planning safe work practices, and selecting personal protective equipment.

FPN No. 2:

ANSI Z535.4-1998, Product Safety Signs and Labels, provides guidelines for the design of safety signs and labels for application to products.

Basic Arc Flash Labels

- Meets current NEC labeling requirements
- Made of durable B-302 Polyester with overlamine to withstand harsh environments

2" x 4" Arc flash & shock hazard; table



Catalog #	Qty.	Header	Price
101517	100/roll	WARNING	\$69.36
101519	10/pack	WARNING	\$10.04
101518	100/roll	DANGER	\$69.36
101520	10/pack	DANGER	\$10.04

3.5" x 5" Text & pictogram



Catalog #	Qty.	Header	Price
102307	100/roll	WARNING	\$126.15
101950	5/pack	WARNING	\$10.11
102308	100/roll	DANGER	\$126.15
101951	5/pack	DANGER	\$10.11

3.5" x 5" Text Only

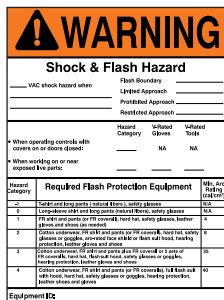


Catalog #	Qty.	Header	Price
102309	100/roll	WARNING	\$126.15
101952	5/pack	WARNING	\$10.11
102310	100/roll	DANGER	\$126.15
101953	5/pack	DANGER	\$10.11

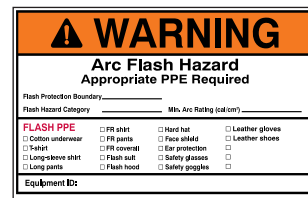
Arc Flash Labels with Preprinted Hazard Categories

- Labels come with the hazard category and PPE requirements preprinted
- B-933 Vinyl can be written on with a pen or marker

Catalog #	Qty.	Header	Price
99462	5	WARNING	\$11.64
99463	5	DANGER	\$11.64



7" x 5" Arc flash & shock hazard

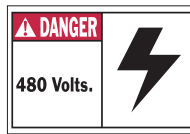


4" x 6" Arc flash hazard only; checkboxes

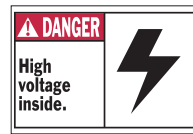
Catalog #	Qty.	Header	Price
99460	10/pack	WARNING	\$10.73
99461	10/pack	DANGER	\$10.73

Machine & Equipment Labels

- Self-sticking polyester
- Standard package: 5
- Price is \$9.92



SS-3 1/2 x 5 - 86783



SS-3 1/2 x 5 - 86861



SS-3 1/2 x 5 - 86868



SS - 3 1/2 x 5 - 86204



SS - 3 1/2 x 5 - 86203

Write-On Inspection Labels

- Label size: 1/8" x 1 1/2"
- Made of durable, write-on polyester material
- Standard package: 364 identical labels
- Price is \$35.79



Cat. No. 82588



Cat. No. 82587

Voltage Labels

- Orange markers meet ASME (ANSI) Standard ZG3.22
- Sold individually



Legend	Catalog Number			Price
	Style A 1 Marker/ Card	Style B 4 Markers/ Card	Style C 18 Markers/ Card	
120 Volts	44104	44204	44304	\$2.56
120/208 Volts	44159	44259	44359	\$2.56
240 Volts	44110	44210	44310	\$2.56
277/480 Volts	44160	44260	44360	\$2.56
480 Volts	44115	44215	44315	\$2.56
Single Phase	44129	44229	44329	\$2.56
Three Phase	44131	44231	44331	\$2.56

1 Marker Per Card – Marker Size – 2 1/4" x 9"
 4 Markers Per Card – Marker Size – 1 1/8" x 4 1/8"
 18 Markers Per Card – Marker Size – 1/2" x 2 1/4"

Accident Prevention Tags

- Made with B-851 polyester unless otherwise indicated
- Size is 3" x 5 3/4" with 3/8" metal grommet



Cat. No. 86533

Cat. No. 86643 - Card Stock

Cat. No. 65372

Blank both sides

Cat. No. 65373

†Cat. No. 65350

Cat. No. 76168

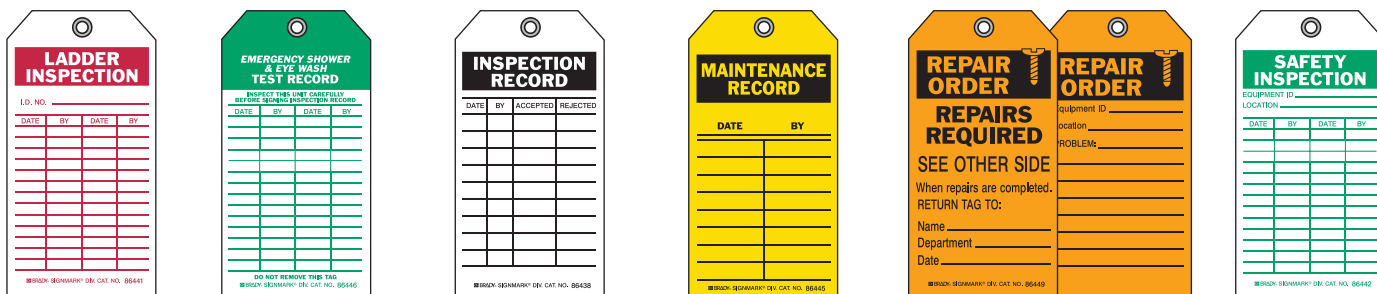
Cat. No. 76171

*Cat. No. 76192

Cat. No. 86537

Inspection & Material Control Tags

- Tags meet OSHA Standard 1910.145 for accident prevention



Cat. No. 86441
3" x 5 3/4" Laminated

Cat. No. 86446
3" x 5 3/4" Laminated
Cat. No. 86615
4" x 7" Polyester

Cat. No. 86620
4" x 7" Polyester

Cat. No. 86614
4" x 7" Polyester

Cat. No. 86624
4" x 7" Polyester

Cat. No. 86442
3" x 5 3/4" Laminated
Cat. No. 86611
4" x 7" Polyester

Self-Laminating Tags

- Constructed of Brady's durable B-851 polyester with a 1 mil polyester overlay
- Size is 3" x 5 3/4" with 3/8" metal grommet



Cat. No. 86458

Cat. No. 86459

Cat. No. 65501

Production Status Tags

- Constructed of durable cardstock
- Size is 3" x 5 3/4" with 3/8" metal grommet

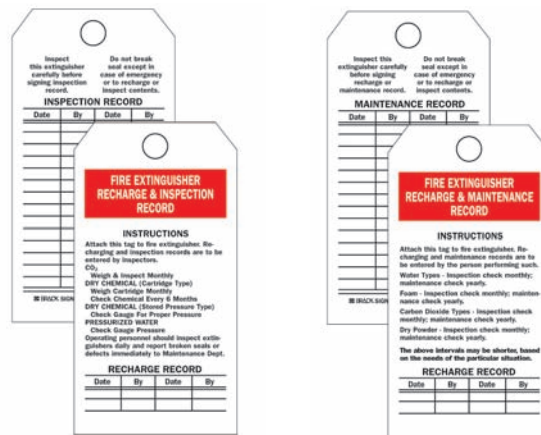


Cat. No. 86751

Cat. No. 86776

Recharge Maintenance/Inspection Tags

- B-851 Rigid Polyester
- Size is 3" x 5 3/4" with 3/8" metal grommet
- Standard package: 25 tags Includes plastic lock-on ties



Cat. No. 76222

Cat. No. 65371

Scafftag

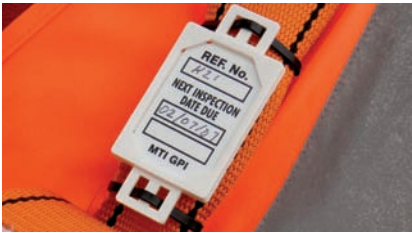


Scaffolding Tags

- SCAFFTAG® provides system, procedural and legal compliance
- Provides a clear inspection trail giving integrity and control of work carried out
- Essential for companies working with ISO9000 clients

Cat. No.	Description	Qty.	Color	Size	Price
104111	Holder	10/Box	White	11 ³ / ₄ " x 3 ¹ / ₂ "	\$62.00
104112	Holder	10/Box	Red	11 ³ / ₄ " x 3 ¹ / ₂ "	\$62.00
104113	Inspection Inserts	100/Pkg	Green	3 ¹ / ₄ " x 7 ⁵ / ₈ "	\$155.00
104114	Caution Inserts	100/Pkg	Yellow	3 ¹ / ₄ " x 7 ⁵ / ₈ "	\$155.00
104115	Standard Kit*	1/Kit	White		\$108.50
104116	Scafftag II Holder	10/Box	White	11 ¹ / ₂ " x 6"	\$92.23
104117	Inspection Inserts	100/Pkg	Green	5 ³ / ₄ " x 7 ⁵ / ₈ "	\$175.00
104118	Scafftag II Kit*	1/Kit			\$139.50

*Kits include 10 Holders, 20 Inserts and 1 Pen

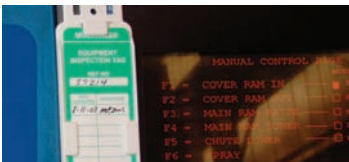


Micro Tag

A safety system which is particularly useful for identifying small plant, equipment, lifting gear and safety harnesses. Color coded and date qualified, the system also has the facility to render equipment in a 'prohibition status' should it be found to be faulty between inspection dates. Meets the requirements for OSHA CFR 1926.502 (d) (21) Personal Fall Arrest systems.

Cat. No.	Description	Qty.	Color	Size	Price
104143	Microtag Kit*	1			\$62.00
104152	Next Inspection Date Due	100	Green	1 ⁷ / ₈ " x 1 ¹ / ₄ "	\$77.50
104155	Next Inspection Date Due	100	Red	1 ⁷ / ₈ " x 1 ¹ / ₄ "	\$77.50
104157	Next Inspection Date Due	100	Yellow	1 ⁷ / ₈ " x 1 ¹ / ₄ "	\$77.50

*Kit includes 20 holders, 40 cables ties and 1 pen



MultiTag®

Assists with the identification and preventative maintenance requirements of a range of equipment, and may assist with the requirements of CFR 1926.1053 (12), (b) (17) (i) (ii) and CFR 1910.25 (d) (1) (X) US Patent # 314,016

Cat. No.	Description	Qty./UOM	Color	Size	Price
104122	Multitag Holder	10/BOX	White	2 ¹ / ₄ " x 8 ³ / ₄ "	\$62.00
104123	Multitag Inserts	100/PK	Green	2" x 6 ¹ / ₂ "	\$155.00
104124	Multitag Kit	1/KIT			\$86.80

*Kit includes 10 holders, 10 inserts and 1 pen



Ladder Tags

LADDERTAG™ is a complete ladder safety management system. Regulations require ladders to be checked for damage, faults and wear before use by an authorized user, and may assist with the requirements of CFR 1926.1053 (a) (12), (b) (17) (i) (ii) and CFR 1910.25 (d) (1) (X)

Cat. No.	Desc.	Qty.	Color	Size	Price
104125	Holder	10/BOX	White	2 ¹ / ₄ " x 8 ³ / ₄ "	\$62.00
104126	Inserts	100/PK	Yellow	2" x 6 ¹ / ₂ "	\$155.00
104127	Kit*	1/KIT			\$86.80

*Kit includes 10 holders, 10 inserts and 1 pen



www.bradyc.com/scafftag

Forklift™ Tag

Assists with the requirements of 1910.178 (q) (7) pre use preventative maintenance and safety inspection for forklift trucks. The FORKLIFT™ holder is permanently attached to the cage of the forklift truck and displays the prohibition sign and the script "DO NOT USE". The FORKLIFT™ insert shows in written and graphic format the daily or pre shift, inspections that should be carried out by the first user.

Cat. No.	Description	Qty./UOM	Color	Size	Price
104128	Forklift Holder	10/BOX	White	11 ¹ / ₂ " x 6"	\$50.00
104129	Forklift Inserts	100/PK	Blue/Yellow	5 ³ / ₄ " x 7 ⁵ / ₈ "	\$271.25
104130	Forklift Kit*	1/KIT			\$114.70

*Kit includes 10 holders, 10 status inserts and 1 pen



EntryTag®

Designed to work in conjunction with existing permit to work systems and assist with the requirements of CFR 1910.146 (c) (2), (d) (11) and (f) (2). ENTRYTAG® acts as a visual reminder to authorized personnel and assists in instructing non authorized personnel of the critical requirements contained within the permit to work. The system clearly states the minimum requirements of entry to the confined space or whether the area is in prohibition and cannot be entered.

Cat. No.	Description	Qty./UOM	Color	Size	Price
104119	Entrytag Holder	10/BOX	White	11 ¹ / ₄ " x 6"	\$77.50
104120	Standard Inserts	100/PK	Green	5 ³ / ₄ " x 7 ⁵ / ₈ "	\$271.25
107967	Man In Tank Tag	100/PK	Yellow	2" x 6 ¹ / ₂ "	\$155.00
104121	Entry Tag Kit*	1/KIT			\$114.70

*Kit includes 10 holders, 20 inserts and 1 pen

HOW DO YOU CHOOSE A SORBENT?

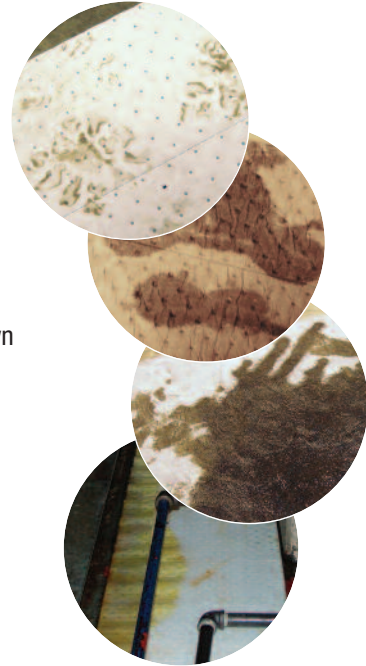
Actually, start at the end, in the trash. One of the best ways to help you pick the right sorbent is to see what they look like when you're done with them. Take a look...

These sorbents are being used in a traffic area – choose a tough sorbent like **BattleMat™** or one of our HT to get durability and high absorbency.

Too much sorbent for the application. Save some money by choosing a medium or lightweight pad..

Not Enough Sorbent! Consider a heavyweight pad to increase performance and cut down on the number of lighter pads you go through everyday. Start with **MRO-100** it's our number one selling product for a reason!

Looks like this sorbent is containing a leak – consider using a **SOC** for containing leaky equipment. SPC offers a variety of SOC's to meet your needs.



DID YOU KNOW?

There is a negative financial impact of using clay to clean up your leaks, drips and spills. It may be cheaper to buy, but the benefits stop there. For example...let's say over the period of a month you clean up 40 gallons or just over a gallon a day. Here are the facts:*

- 40 gallons spilled = 10 bags of clay or 1.5 bales of SPC pads.
- 10 bags of clay cost roughly \$50 and 1.5 bales of pads costs around \$90.
- After you clean up a spill, clay takes up two to three times as many 55-gallon disposal drums than the pads do.
- Let's estimate the disposal costs at \$350 per drum – making your final cost of using clay easily double the cost of using SPC sorbents.

Still not convinced... consider these points:

- OSHA considers silica a serious health hazard.
- Granular clean up is difficult and labor intensive.
- The small particles can easily enter and damage machinery or your finished product.
- Clay has limited chemical resistance.

* This is a basic analysis using estimations and averages. Individual situations may vary.
Contact your Regional Sorbent Sales Manager to do a more in-depth and customized analysis of your costs.



Sorbent Products by SPC

Complying with OSHA and EPA Regulations

29 CFR 1910.22(a)(2)

Clean, dry workplace floors.

40 CFR 112.7(c)(1)(vii)

Sorbent materials is one option for preventing oil spills from reaching waterways

29 CFR 1910.120(j)(1)(vii)

DOT-specified containers and suitable quantities of absorbents shall be kept available for response to spills

Spill Prevention Control & Countermeasure (SPCC) Plan

EPA issued the final rule amending the SPCC under the authority of the Federal Water Pollution Control Act and this regulation became effective as of August 16, 2002.

What is an SPCC Plan?

An SPCC Plan is a facility-specific comprehensive description of a facility's containment and counter measures that would prevent an oil spill from occurring as well as procedures to respond and clean up an oil spill that does occur.

The SPCC plan addresses the following three areas:

- Operating procedures that prevent oil spills
- Control measures installed to prevent a spill from reaching the environment
- Countermeasures to contain, clean up, and mitigate the effects of an oil spill that reaches the environment



MRO Plus

- The standard in all-purpose, gray maintenance sorbents
- Three-ply construction makes it stronger, more durable and reduces lint

Cat. No.	Type	Size	Qty.	Price
MRO100	Pad	15" x 19"	1/case	\$110.59
MRO15P	Roll	15" x 150'	1/case	\$132.69
MRO30DP	Roll	30" x 150'	1/case	\$206.87
MRO315P	Roll	15" x 150'	1/case	\$90.47
MRO350DP	Roll	30" x 150'	1/case	\$144.66



Universal Plus

- Ideal for aggressive fluids
- 3-ply construction
- Perforated to reduce waste

Cat. No.	Type	Size	Quantity	Price
UN1113	Pads	12" x 12"	200/case	\$158.36
UN1719	Pads	15" x 19"	100 case	\$162.19
UN1019	Rolls	15" x 150'	2/bale	\$237.61
UN3800	Rolls	30" x 150'	1/case	\$237.61



HT Series

- Built for durability and high absorbency
- Economical for high traffic busy areas
- Three-ply construction makes it stronger,
- Durable, abrasion-resistant upper layer

Cat. No.	Type	Size	Qty.	Price
HT153	Roll	15" x 300'	1 bale	\$132.81
HT303	Roll	30" x 300'	1 bale	\$212.18



SOCS

- Dependable, flexible tubes contain & absorb liquids
- Molds around corners & conforms to uneven surfaces

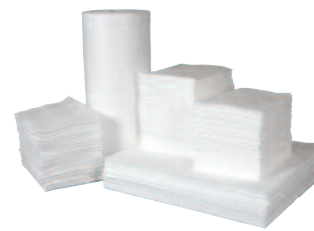
Cat. No.	Type	Size	Quantity	Price
MS50	Soc	3" x 4"	40/case	\$133.80
SW46	Soc	3" x 42"	40/case	\$103.93
AW412	Soc	3" x 4'	12/case	\$88.87
HAZ412	Soc	3" x 4'	12/case	\$103.31



Battlemat

- Tough, camouflage-print construction
- Ideal as walk-on mats
- Suitable for single-use absorbents

Cat. No.	Type	Size	Qty.	Price
BM15	Roll	15" x 150'	1/case	\$142.69
BM30	Roll	30" x 150'	1/case	\$281.92



ENV

- Contractor grade oil-only sorbents
- Absorbs petroleum-based liquids while repelling water
- Low cost, industrial alternative

Cat. No.	Type	Size	Quantity	Price
ENV100	Pads	15" x 19"	100/bale	\$76.16
ENV150	Roll	30" x 150'	1/case	\$117.26
ENV200	Pads	15" x 19"	200/bale	\$80.10
ENV300	Pads	15" x 19"	100/bale	\$62.83
ENV500	Pads	15" x 19"	100/bale	\$46.91

Sorbent Products by SPC



Portable and Drum Spill Kits

- Wide variety available
- All kits available in Universal (Allwik), Oil Only or Chemical (Hazwik)

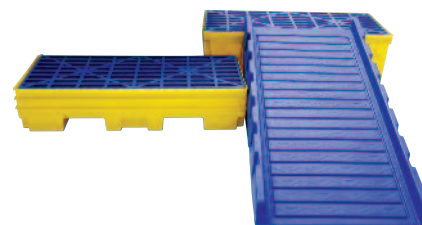
Cat. No.	Price	Cat. No.	Price
SKO-PP	\$55.79	SKO-20	\$294.88
SKA-PP	\$55.30	SKA-20	\$294.88
SKH-PP	\$61.84	SKH-20	\$354.50
SKO-ATK	\$355.61	SKO-55	\$573.22
SKA-ATK	\$381.03	SKA-55	\$573.22
SKH-ATK	\$400.90	SKH-55	\$592.72



Sorbent Center

- Holds up to 38" roll and full bales
- Wall mountable or available casters
- Stackable with optional accessories

Catalog No.	Type	Quantity	Price
SC-3000	Center	1 Center	\$382.64



Spill Decks & Pallets

- Solid construction
- Nestable
- Interchangeable grates w/ large openings
- Forklift friendly

Catalog No.	Type	Quantity	Price
SC-SD2	Spill Deck	1 Deck	\$215.56
SC-DP2	Spill Pallet	1 Pallet	\$335.36
SC-DP4	Spill Pallet	1 Pallet	\$500.00

Sorbent Part Number Listing and Details

Catalog No.	Type	Size	Quantity	Description	Use	Price
MRO100	Pad	15" x 19"	100/case	Heavy weight, all-purpose pad	All Industrial Liquids	\$110.59
MRO15P	Roll	15" x 150'	1/case	Heavy weight, perfed every 18"	All Industrial Liquids	\$132.69
MRO30DP	Roll	30" x 150'	1/case	Heavy weight, perfed every 15" & center	All Industrial Liquids	\$206.87
MRO315P	Roll	15" x 150'	1/case	Medium weight, perfed every 18"	All Industrial Liquids	\$90.47
MRO350DP	Roll	30" x 150'	1/case	Medium weight, double perfed roll	All Industrial Liquids	\$144.66
HT153	Roll	15" x 300'	1/bale	Medium weight, single-perfed roll	All Industrial Liquids	\$132.81
HT303	Roll	30" x 300'	1/bale	Medium weight, double-perfed roll	All Industrial Liquids	\$212.81
BM15	Roll	15" x 150'	1/case	Heavy weight, camo, double-perfed roll	All Industrial Liquids	\$142.69
BM30	Roll	30" x 150'	1/case	Heavy weight, camo, double-perfed roll	All Industrial Liquids	\$281.92
UN1113	Pads	12" x 12"	200/case	Handy refillable dispenser box	Hazardous Chemicals & Acids	\$158.36
UN1719	Pads	15" x 19"	100 case	Full size perfed pad	Hazardous Chemicals & Acids	\$162.19
UN1019	Rolls	15" x 150'	2/bale	Full size perfed pad	Hazardous Chemicals & Acids	\$237.61
UN3800	Rolls	30" x 150'	1/case	Perfed every 15" & up center	Hazardous Chemicals & Acids	\$237.61
MS50	Soc	3" x 4"	40/case	MultiWik™ universal economy SOC	NOT for use with Aggressive Fluids	\$133.80
SW46	Soc	3" x 42"	40/case	SlikWik® corncob-filled SOC	NOT for use with Aggressive Fluids	\$103.93
AW412	Soc	3" x 4'	12/case	AllWik® all-purpose polypropylene SOC	Most Industrial Liquids	\$88.87
HAZ412	Soc	3" x 4'	12/case	HazWik® green polypropylene SOC for chemical clean up	Chemicals	\$103.31
ENV100	Pads	15" x 19"	100/bale	Heavy-weight economy floats on water	Oil Only	\$76.16
ENV150	Roll	30" x 150'	1/case	Medium-weight value roll floats on water	Oil Only	\$117.26
ENV200	Pads	15" x 19"	200/bale	Light weight economy, double coverage floats on water	Oil Only	\$80.10
ENV300	Pads	15" x 19"	100/bale	Medium weight economy floats on water	Oil Only	\$62.83
ENV500	Pads	15" x 19"	100/bale	Light weight economy floats on water	Oil Only	\$46.91
SKO-PP	Kit		5 Kits	Economy Spill Kit - Oil Only	Absorbs up to 5 gallons per kit	\$55.79
SKA-PP	Kit		5 Kits	Economy Spill Kit - Allwik	Absorbs up to 5 gallons per kit	\$55.30
SKH-PP	Kit		5 Kits	Economy Spill Kit - Hazwik	Absorbs up to 5 gallons per kit	\$61.84
SKO-SAK	Kit		1 Kit	Emergency Spill Sak - Oil Only	Absorbs up to 9 gallons per kit	\$166.63
SKA-SAK	Kit		1 Kit	Emergency Spill Sak - Allwik	Absorbs up to 9 gallons per kit	\$166.63
SKH-SAK	Kit		1 Kit	Emergency Spill Sak - Hazwik	Absorbs up to 9 gallons per kit	\$181.69
SKO-ATK	Kit		4 Kits	Attack Pac - Oil Only	Absorbs up to 7 gallons per kit	\$355.61
SKA-ATK	Kit		4 Kits	Attack Pac - Allwik	Absorbs up to 7 gallons per kit	\$381.03
SKH-ATK	Kit		4 Kits	Attack Pac - Hazwik	Absorbs up to 7 gallons per kit	\$400.90
SKO-20	Kit		1 Kit	20 Gallon Lab Pack - Oil Only	Absorbs up to 15 gallons per kit	\$294.88
SKA-20	Kit		1 Kit	20 Gallon Lab Pack - Allwik	Absorbs up to 15 gallons per kit	\$294.88
SKH-20	Kit		1 Kit	20 Gallon Lab Pack - Hazwik	Absorbs up to 15 gallons per kit	\$354.50
SKO-55	Kit		1 Kit	55 Gallon Drum - Oil Only	Absorbs up to 38 gallons per kit	\$573.22
SKA-55	Kit		1 Kit	55 Gallon Drum, Allwik	Absorbs up to 38 gallons per kit	\$573.22
SKH-55	Kit		1 Kit	55 Gallon Drum - Hazwik	Absorbs up to 38 gallons per kit	\$592.72
SC-3000	Center		1 Center	Sorbent Center	Hold up to a 38" roll and full bales	\$382.64
SC-SD2	Spill Deck		1 Deck	2 drum spill deck	21.2 gallon capacity	\$215.56
SC-DP2	Spill Pallet		1 Pallet	2 drum spill pallet	68.7 gallon capacity	\$335.36
SC-DP4	Spill Pallet		1 Pallet	4 drum spill pallet	128.9 gallon capacity	\$500.00

Lockout / Tagout OSHA Regulations

OSHA 29 CFR §1910.147 The control of hazardous energy (lockout/tagout).

Scope, application and purpose

- (1) Scope. (i) This standard covers the servicing and maintenance of machines and equipment in which the unexpected energization or start up of the machines or equipment, or release of stored energy could cause injury to employees. This standard establishes minimum performance requirements for the control of such hazardous energy.
- (2) Application. (i) This standard applies to the control of energy during servicing and / or maintenance of machines and equipment.
- (3) Purpose. (i) This section requires employers to establish a program and utilize procedures for affixing appropriate lockout devices or tagout devices to energy isolating devices, and to otherwise disable machines or equipment to prevent unexpected energization, start-up or release of stored energy in order to prevent injury to employees.



1910.147(c) OSHA Energy Control Policy; Synopsis of Requirements

An energy control policy must be documented and at a minimum should cover the following aspects of the program:

- Purpose and scope of the program
- Personnel authorized to perform LO/TO
- Enforcement policy
- Training methods
- Group lockout procedures
- Shift transfer procedures
- Lock removal procedures
- Method for auditing & updating procedures
- Coordination with outside contractors

1910.147(c)(4) Energy Control Procedures; Synopsis of Requirements

- Procedures must be documented and must identify the equipment covered.
- A separate procedure must be created for each piece of equipment to be locked out. There are exceptions where multiple machines may be grouped under a single procedure
- The procedure must include specific steps for shutting down, isolating, blocking and securing equipment to control hazardous energy
- Specific steps for the placement, removal and transfer of lockout/tagout devices should also be included
- The employer shall conduct and certify periodic inspections at least annually



1910.147(c)(5) OSHA Lockout Device Requirements

LOCKOUT DEVICES MUST:

- Be provided by the employer
- Be standardized by size, shape or color
- Be distinguishable from locks used for other purposes. Lockout locks should only be used for lockout!
- Identify the individual who applied the lock (both tags and lock labels are acceptable for this purpose)
- Be durable
- Be strong enough to prevent removal except by using excessive force
- Remain under the exclusive control of the individual who attached them.

1910.147(c)(5)(ii)(B) Standardized.

Lockout and tagout devices shall be standardized within the facility in at least one of the following criteria: Color; shape; or size; and additionally, in the case of tagout devices, print and format shall be standardized.

1910.147(c)(5)(ii)(A) Durable.

Lockout and tagout devices shall be capable of withstanding the environment to which they are exposed for the maximum period of time that exposure is expected.

bradyid.com/lockouttagout

Lockout Kits & Stations



Personal Breaker Pouch

- Covers 120v/277v and 480/600v breakers in single- and multi-pole configurations.
- Components:
 - 1 120/277V Clamp-On Breaker Lockout w/cleat (65396)
 - 1 480/600V Clamp-On Breaker Lockout w/cleat (65397)
 - 1 Universal Multipole Breaker Lockout (66321)
 - 2 1" Group Lockout Hasps (65375)
 - 2 Heavy Duty Lockout Tags (65520) w/ Nylon Cable Ties
 - 1 Lockout Belt Pouch (51172)

Cat. No.	Description	Price
105967	w/ 2 Keyed-Alike Padlocks	\$97.11



Breaker Sampler Pouch

- Components:
 - 1 120V Snap-On Breaker Lockout (65387)
 - 1 120/277V Clamp-On Breaker Lockout w/cleat (65396)
 - 1 480/600V Clamp-On Breaker Lockout w/cleat (65397)
 - 1 Universal Multi-Pole Breaker Lockout (66321)
 - 1 Oversized Breaker Lockout (65329)
 - 1 Lockout Belt Pouch (51172)
 - 1 Includes 2 Safety Padlocks and 2 Tags

Cat. No.	Description	Price
99296	Kit w/2 Padlocks & Tags	\$99.41



Personal Valve & Electrical Kit

- Components:
 - 1 All Purpose Cable Lockout (50943)
 - 1 1" - 6 1/2" Adjustable Gate Valve Lockout (64057)
 - 1 1/2" - 2 1/2" Small Ball Valve Lockout (BS07A)
 - 1 3-in-1 Plug Lockout (PLO23)
 - 2 120/277V Clamp-On Breaker Lockouts w/ Cleats (65396)
 - 1 480/600V Clamp-On Breaker Lockout w/ Cleat (65397)
 - 2 Universal Multipole Breaker Lockouts (66321)
 - 3 1" Group Lockout Hasps (65375)
 - 3 Heavy Duty Lockout Tags (65520) w/ Nylon Cable Ties
 - 1 Medium Lockout Toolbox (105906)

Cat. No.	Description	Price
105955	w/ 3 Keyed-Alike Safety Padlocks	\$258.16



Breaker Sampler Pouch

- Contains all the devices you need to lockout most 120/277V breakers
- Components:
 - 2 120V Snap-On Breaker Lockouts (65387)
 - 2 120/277V Clamp-On Breaker Lockout w/ Cleats (65396)
 - 2 Universal Multi-Pole Breaker Lockout w/ Cleats (66321)
 - 1 Lockout Belt Pouch (51172)

Cat. No.	Description	Price
99302	Kit w/2 Safety Padlocks & 2 Tags	\$102.40
99303	Kit w/2 Steel Padlocks & 2 Tags	\$101.30



Personal Padlock Pouch

- Components:
 - 2 Choose between keyed-different safety padlocks (99552) or steel padlocks (99500)
 - 2 Heavy Duty Lockout Tags (65520) w/ Nylon Cable Ties
 - 1 1" Group Lockout Hasp (65375)
 - 1 1.5" Group Lockout Hasp (65376)
 - 1 Lockout Belt Pouch (51172)

Cat. No.	Description	Price
99290	w/2 Safety Padlocks	\$71.87

bradyid.com/lockouttagout



Electrical Lockout Toolbox

- Components:
 - 1 Mini Cable Lockout (50940)
 - 2 120V Snap-On Breaker Lockouts (65387)
 - 2 120/277V Clamp-On Breaker Lockouts w/cleats (65396)
 - 2 480/600V Clamp-On Breaker Lockouts w/cleats (65397)
 - 2 Universal Multi-Pole Breaker Lockouts (66321)
 - 1 Oversized Breaker Lockout (65329)
 - 1 3-in-1 Plug Lockout (PLO23)
 - 1 Wall Switch Lockout (65392)
 - 1 Small Fuse Blockout (65390)
 - 1 Large Fuse Blockout (65691)
 - 1 Extra-Large Lockout Toolbox (LKP-TKLBOX)
 - 2 Steel Padlocks w/ Tags

Cat. No.	Description	Price
99313	w/2 locks & Tags	\$227.07

Lockout Kits & Stations



Combination Lockout Satchel

- Components:
 - 1 Large Univ. Valve Lockout w/ Blocking Arm (50899 and 65403)
 - 1 All Purpose Cable Lockout w/ 8' Sheathed Cable (50943)
 - 1 1/4" - 1" Ball Valve Lockout (65666)
 - 1 1" - 2 1/2" Gate Valve Lockout (65560)
 - 1 2 1/2" - 5" Gate Valve Lockout (65561)
 - 1 5" - 6 1/2" Gate Valve Lockout (65562)
 - 1 120V Snap-On Breaker Lockout (65387)
 - 1 120/277V Clamp-On Breaker Lockout w/ Cleat (65396)
 - 1 480/600V Clamp-On Breaker Lockout w/cleat (65397)
 - 1 Universal Multi-Pole Breaker Lockout (66321)
 - 1 110V Plug Lockout (65674)
 - 1 Wall Switch Lockout (65392)
 - 1 Lockout Satchel (51173)
 - 2 Safety Padlocks & Tags

Cat. No.	Description	Price
99687	w/2 locks & Tags	\$328.78



Combination Lockout Toolbox

- Components:
 - 1 1" - 6 1/2" Adjustable Gate Valve Lockout (64057)
 - 1 1/4" - 1" Ball Valve Lockout (65666)
 - 1 1 1/4" - 3" Ball Valve Lockout (65669)
 - 1 120V Snap-On Breaker Lockout (65387)
 - 1 120/277V Clamp-On Breaker Lockout w/cleat (65396)
 - 1 480/600V Clamp-On Breaker Lockout w/cleat (65397)
 - 1 Universal Multi-Pole Breaker Lockout (66321)
 - 1 110V Plug Lockout (65674)
 - 1 Wall Switch Lockouts (65392)
 - 1 Lockout Belt Pouch (51172)
 - 1 Extra-Large Lockout Toolbox (LKP-TKLBOX)
 - 2 Steel Padlocks w/ tags

Cat. No.	Description	Price
99685	w/2 locks & Tags	\$229.19



Combination Lockout Duffel

- Components:
 - 1 Mini Cable Lockout (50940)
 - 1 Large Univ. Valve Lockout w/ Blocking Arm (50899 and 65403)
 - 1 120V Snap-On Breaker Lockout (65387)
 - 1 120/277V Clamp-On Breaker Lockout (65396)
 - 1 480/600V Clamp-On Breaker Lockout (65397)
 - 1 Universal Multi-Pole Breaker Lockout (66321)
 - 1 Oversized Breaker Lockout (65329)
 - 1 3-in-1 Plug Lockout (PLO23)
 - 1 Wall Switch Lockout (65392)
 - 1 1" - 6 1/2" Adjustable Gate Valve Lockout (64057)
 - 1 1" - 2 1/2" Gate Valve Lockout (65560)
 - 1 1/4" - 1" Ball Valve Lockout (65666)
 - 1 Lockout Belt Pouch (51172)
 - 1 Lockout Duffel Bag (99162)

Cat. No.	Description	Price
99691	w/2 Steel Padlocks & 2 Tags	\$366.73



Valve Lockout Toolbox

- Components:
 - 1 Small Univ. Valve Lockout w/ Blocking Arm (50924 and 65402)
 - 1 All Purpose Cable Lockout w/ 8' Sheathed Cable (50943)
 - 1 1" - 6 1/2" Adjustable Gate Valve Lockout (64057)
 - 1 1/4" - 1" Ball Valve Lockout (65666)
 - 1 1" - 2 1/2" Gate Valve Lockout (65560)
 - 1 Extra-Large Lockout Toolbox (LKP-TKLBOX)

Cat. No.	Description	Price
99324	w/2 Steel Padlocks & 2 Tags	\$228.66



Lockout Belt Pouch

- Made of heavy duty nylon with loops for hanging on a belt
- Dimensions: 4 3/4" h x 7 1/2" w x 2" d

Catalog No.	Description	Price
51172	Lockout Belt Pouch	\$28.74



Lockout Bag

- Made of rugged canvas with drawstring
- Capable of being locked closed
- Dimensions: 9 3/4" h x 18" l

Catalog No.	Description	Price
65780	Lockout Security Bag	\$46.75



Lockout Duffel Bag

- Made of 600 denier polyester with 39" removable shoulder strap and 8 inside pockets
- Dimensions: 10" h x 16 1/2" w x 8 1/2" d

Catalog No.	Description	Price
99162	Lockout Duffel Bag	\$80.58

Lockout Kits & Stations



Metal Lockout Cabinet

- Capable of being locked closed
- Can also be easily wall mounted using predrilled holes in back
- Lockout safety tips printed on inside door
- Dimensions: 16"h x 14"w x 6"d

Cat. No.	Description	Price
LC252M	Metal Lockout Cabinet	\$139.13



Ready Access Lockout Station

- Semi-transparent hinged cover with locking mechanism protects
- Slots in back for wall mounting
- 4 Small Detachable hanging hooks
- Storage compartment (4.25"H x 16"W x 5.12"D)
- Dimensions: 17" H x 17"W x 6.75"D

Cat. No.	Description	Price
105942	Molded Lockout Station	\$99.75



Ready Access Valve & Electrical Lockout Station

- Components:
 - 1 Ready Access Lockout Station (105942)
 - 1 Adjustable Gate Valve Lockout (64057)
 - 1 All Purpose Cable Lockout (50943)
 - 1 Ball Valve Lockout (BS07A)
 - 1 3-in-1 Plug Lockout (PLO23)
 - 2 120/277V Clamp-On Breaker Lockouts (65396)
 - 1 480/600V Clamp-On Breaker Lockout (65397)
 - 2 Universal Multipole Breaker Lockouts (66321)
 - 2 1" Group Lockout Hasps (65375)
 - 1 1.5" Group Lockout Hasp (65376)
 - 6 Keyed-different safety (99552) or steel (99500) locks
 - 6 Heavy duty lockout tags (65520) w/ ties

Cat. No.	Description	Price
105933	w/ no locks	\$294.00
105934	w/ 6 Safety Padlocks	\$372.75
105935	w/ 6 Steel Padlocks	\$364.35



Ready Access Padlock Station Station with 5 Padlocks

- Components:
 - 1 Ready Access Padlock Station (105932)
 - 5 Keyed-different Padlocks
 - 5 Heavy Duty, re-usable lockout tags (65520) w/ nylon cable ties
 - 2 1" Group Lockout Hasps (65375)
 - 2 1.5" Group Lockout Hasps (65376)

Station with 10 Padlocks

- Components:
 - 1 ReadyAccess Padlock Station (105932)
 - 10 Keyed-different padlocks
 - 10 Heavy duty, re-usable lockout tags (65520) w/ nylon cable ties
 - 3 1" Group Lockout Hasps (65375)
 - 3 1.5" Group Lockout Hasps (65376)

Cat. No.	Description	Price
105928	w/ 5 Safety Padlocks	\$176.40
105929	w/ 5 Steel Padlocks	\$168.00
105930	w/ 10 Safety Padlocks	\$283.50
105931	w/ 10 Steel Padlocks	\$266.70
105932	w/ no padlocks	\$84.00



Ready Access Electrical Lockout Station

- Components:
 - 1 Ready Access Lockout Station (105942)
 - 2 3-in-1 Plug Lockouts (PLO23)
 - 1 Mini Cable Lockout (50940)
 - 2 120/277V Clamp-On Breaker Lockouts w/cleats (65396)
 - 2 480/600V Clamp-On Breaker Lockouts w/cleats (65397)
 - 2 Universal Multipole Breaker Lockouts (66321)
 - 1 Oversized Breaker Lockout (65329)
 - 2 1" Group Lockout Hasps (65375)
 - 1 1.5" Group Lockout Hasps (65376)
 - 6 Keyed different padlocks
 - 6 Heavy duty, re-usable lockout tags (65520) w/ nylon cable ties

Cat. No.	Description	Price
105940	w/ 6 Safety Padlocks	\$349.65
105941	w/ 6 Steel Padlocks	\$341.25



Ready Access Valve Lockout Station

- Components:
 - 1 Ready Access Lockout Station (105942)
 - 2 Adjustable Gate Valve Lockouts (64057)
 - 1 All Purpose Cable Lockout (50943)
 - 2 Ball Valve Lockouts (BS07A)
 - 2 1" Group Lockout Hasps (65375)
 - 1 1.5" Group Lockout Hasp (65376)
 - 6 Keyed different padlocks
 - 6 Heavy duty, re-usable lockout tags (65520) w/ nylon cable ties

Cat No.	Description	Price
105937	w/ 6 Safety Padlocks	\$367.50
105938	w/ 6 Steel Padlocks	\$359.10

Lockout Kits & Stations



Extra-Large Lockout Station

- Dimensions: 30"h x 25"w x 5 1/4"d
- Components:
 - 1 All Purpose Cable Lockout (50943)
 - 1 Large Univ. Valve Lockout w/ Blocking Arm (50899 and 65403)
 - 2 120V Snap-On Breaker Lockouts (65387)
 - 2 120/277V Clamp-On Breaker Lockouts (65396)
 - 2 480/600V Clamp-On Breaker Lockouts (65397)
 - 2 Universal Multi-Pole Breaker Lockouts (66321)
 - 1 Oversized Breaker Lockout (65329)
 - 2 Cleats for 120/277V Clamp-On Lockouts (65404)
 - 2 Cleats for 480/600V Clamp-On Lockouts (65406)
 - 1 Wall Switch Lockout (65392)
 - 1 110V Plug Lockout (65674)
 - 1 3-in-1 Plug Lockout (PL023)
 - 1 1/4" - 1" Ball Valve Lockout (65666)
 - 1 1 1/4" - 3" Ball Valve Lockout (65669)
 - 2 1" - 2 1/2" Gate Valve Lockouts (65560)
 - 1 1" - 6 1/2" Adjustable Gate Valve Lockout (64057)
 - 2 Labeled Lockout Hasps (65960)

Cat. No.	Description	Price
99693	w/ Components and 18 Safety Padlocks, 25 Tags	\$1019.40
50993	empty station	\$403.13



Lockout Kit - Complete Set

- Includes fully equipped lockout kit (LKX), and rack and sign (LKX-Rack)

Cat. No.	Description	Price
LKXSET	Lockout Kit - Complete Set	\$123.90
LKX	Economy Lockout Kit	\$101.65
LKX-Rack	Sign & Rack only	\$37.01



Industrial Strength Lockout Station

- Components:
 - 3 - Red Safety padlocks (99552)
 - 3 - Yellow Safety padlocks (99570)
 - 1 - Safety Donut® - 2 1/2" - 5" (SD04)
 - 1 - Safety Donut® - 1" - 2 1/2" (SD02)
 - 1 - Single pole breaker lockout (BLO1)
 - 10 - Lockout tags with ties (LT10)
 - 2 - Multi pole breaker lockout (BLO3)
 - 1 - 1" Multiple lockout device (T218)
 - 1 - Single pole breaker lockout (BLO4)
 - 1 - 1 1/2" Multiple lockout device (T220)
 - 1 - Large plug lockout (PL023)
 - 1 - Small plug lockout (PL021)

Cat. No.	Description	Price
LC251M	w/ components	\$345.85
LC252M	Cabinet only	\$139.13
LC254M	Extra shelf	\$11.08



Ultimate Lockout Kit

- Components:
 - 1 - Safetee™ Donut 1" - 2 1/2" (SD02)
 - 1 - Safetee™ Donut 5" - 6 1/2" (SD06)
 - 1 - Ball Valve Lockout (BS07A)
 - 1 - Ball Valve Lockout (BS08A)
 - 1 - Large Plug Lockout (PL027E)
 - 10 - "Danger Do Not Operate" Lockout Tags (LT10)
 - 1 - Cable Lockout Device (CABLO)
 - 2 - No-hole Breaker Lockout (BL04)
 - 2 - Breaker Lockout, Triple-pole (BL03)
 - 1 - Breaker Lockout, Multi-pole (BL07)
 - 2 - 1 1/2" Steel Lockout Hasp (T220)
 - 1 - Wall Switch Lockout (WSLO)
 - 1 - Lockout Safety Training Booklet (2112X)
 - 1 - 120-600 AC Voltage Sensor (ESAC600)
 - 3 - Pinzing Padlocks 3/4" Blue (LC041-BU)
 - 1 - Lockout Bag "Duffel Style" (LX980E)

Cat. No.	Description	Price
LK981E	Ultimate Lockout Kit	\$367.02
LK980E	Lockout Bag Only	\$61.37



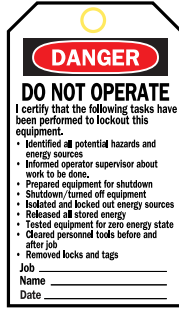
Safety Lockout Center

- Station size: 30"H x 24"W x 4 1/2"D
- (3001) Components:
 - 6 - Multi-color steel padlocks
 - 2 - pkg (10)lockout tags with ties (LT10)
 - 5 - 1 1/2" multiple lockout devices (T220)
 - 1 - pkg (25)Lockout Safety booklets (2112X) Station

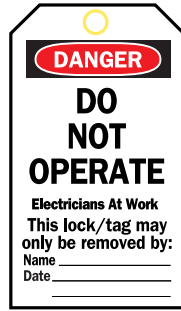
Cat. No.	Description	Price
3001	Safety Lockout Center	\$245.44



Tags & Tag Stations / Padlock Storage



Heavy Duty Polyester (B-837)			
Rev. Side B - 65502	Rev. Side B - 65520	Rev. Side B - 65515	Rev. Side B - 65526
Rev. Side F - 65535	Rev. Side F - 65525		Rev. Side F - 65527
Economy Polyester (B-851)			
Rev. Side B - 66050	Rev. Side B - 66063		Rev. Side B - 66066
Rev. Side F - 66051	Rev. Side F - 66064		Rev. Side F - 66067
Cardstock (B-853)			
Rev. Side B - 65407			Rev. Side B - 65454



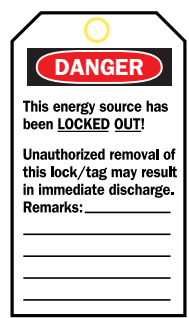
Heavy Duty Polyester (B-837)	
Rev. Side B - 65503	Rev. Side B - 65504

Price Table

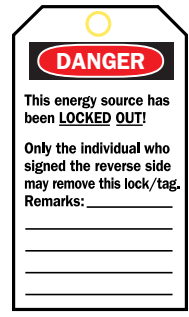
Material	Price
Heavy Duty Polyester (B-837)	\$59.41
Economy Polyester (B-851)	\$35.76
Cardstock (B-853)	\$18.31



Reverse Side Options



Reverse Side B



Reverse Side F



1-Pocket Economy Tag Holder

- Compact, clear plastic holder is designed to hold 50 tags, ties and a marking pen
- Comes with adhesive strips, magnetic strips, and screws for mounting in a variety of ways
- Holder dimensions: 7 1/2"H x 4 1/2"W x 1 1/2"D
- Tags and pen not included

Cat. No.	Description	Price
TH2	1-Pocket Economy Tag Holder	\$13.16



8-Pocket Premium Tag Center

- Acrylic center features 8 pockets for displaying and dispensing tags
- Each polystyrene pocket holds up to 30 tags
- Four pre-drilled holes for wall mounting
- Board dimensions: 15 3/4"H x 23 1/2"W x 2"D
- Tags not included

Cat. No.	Description	Price
TC8	8-Pocket Premium Tag Center	\$49.31



Enclosed Padlock Storage Modules

- Each metal hook can hold 2 locks
- Padlocks sold separately
- Dimensions: 30" x 15" x 3 1/2"

Catalog No.	Description	Price
65241	Large Storage Module	\$275.45

Safety Padlocks / Padlock Centers



Brady Safety Padlock

- 6-pin cylinder resists tampering and offers more unique key cuts
- Lock body dimensions: 1 $\frac{3}{4}$ "H x 1 $\frac{1}{2}$ "W x $\frac{4}{5}$ "D
- Shackle clearance: 1 $\frac{1}{2}$ "; shackle diameter: $\frac{1}{4}$ "

Color	1 Pack	6 Pack
Red	99552	51339
Blue	99556	51344
Green	99564	51345
Yellow	99570	51346
Orange	99576	51347
Black	99580	51353
PRICE	\$12.86	\$75.63



5-Lock Board

- Dimensions: 11 $\frac{1}{2}$ "H x 15 $\frac{1}{2}$ "W
- Includes 5 padlocks (99552 or 99500), one 1" metal hasp (65375), one 1 $\frac{1}{2}$ " metal hasp (65376) and 12 heavy duty tags (65520)

Cat. No.	Description	Price
51181	w/ Safety Padlocks	\$183.84
51186	w/ $\frac{3}{4}$ " Steel Padlocks	\$181.20
50989	Board Only	\$92.11



10-Lock Board

- Dimensions: 13 $\frac{1}{2}$ "H x 13 $\frac{1}{2}$ "W
- Includes 10 padlocks (99552 or 99500), two 1" hasps (65375), two 1 $\frac{1}{2}$ " hasps (65376) and 12 heavy duty tags (65520)

Cat. No.	Description	Price
51187	Filled w/ Safety Padlocks	\$287.87
51188	Filled w/ $\frac{3}{4}$ " Steel Padlocks	\$282.41
50990	Board Only	\$115.14



20-Lock Board

- Dimensions: 23 $\frac{1}{2}$ "H x 11 $\frac{1}{2}$ "W
- Includes 20 padlocks (99552 or 99500), two 1" hasps (65375), two 1 $\frac{1}{2}$ " hasps (65376) and 24 heavy duty tags (65520)

Cat. No.	Description	Price
51189	Filled w/ Safety Padlocks	\$494.10
51194	Filled w/ $\frac{3}{4}$ " Steel Padlocks	\$483.16
50991	Board Only	\$172.74



36-Lock Board

- Dimensions: 21 $\frac{1}{2}$ "H x 23 $\frac{1}{2}$ "W
- Includes 36 padlocks (99552 or 99500), three 1" hasps (65375), three 1 $\frac{1}{2}$ " hasps (65376) and 36 heavy duty tags (65520)

Cat. No.	Description	Price
51195	Filled w/ Safety Padlocks	\$788.98
51196	Filled w/ $\frac{3}{4}$ " Steel Padlocks	\$769.28
50992	Board Only	\$230.34



Padlock Station

- Constructed of 14 gauge steel w/ plastic coating
- Holds up to 24 padlocks (3"H x 16"W x 1 $\frac{1}{4}$ "D)
- Padlocks not included

Cat. No.	Description	Price
LR360E	Large Padlock Station	\$30.93

bradyid.com/lockouttagout

Group Lock Boxes

HOW GROUP LOCKOUT WORKS:

When Larger numbers of workers or lockout points are involved, lock boxes can offer distinct advantages over hasps:

- Supervisor uses a single job lock on each energy control point to lock out equipment
- Keys for job locks are put in a lock box
- Each worker applies his/her own lock to the lock box. As long as any one worker's lock remains secured onto the lock box, the keys to the job locks cannot be accessed, and the energy isolating devices cannot be operated. Each employee retains exclusive control, as required by OSHA.



Portable Metal Lock Boxes

- Made of heavy duty steel, powder-coated for extra rust resistance
- 13 lock holes on lid, plus lockable clasp on front (locks not included)
- Standard lock box Holds up to 40 padlocks
- Extra –large lock box Holds up to 75 padlocks

Cat. No.	Size	Price
65699	9"W x 3 1/2" D x 6"H	\$80.58
51171	7 3/8"W x 9 1/2" D x 6"H	\$92.11



Portable Plastic Lock Box

- Lock rails hold up to 16 padlocks
- Slot in front allows keys to be inserted when box is locked
- Pre-drilled holes for easy wall-mounting
- Comes with 12 hooks for hanging keys, locks, etc.,
- Box body dimensions: 7 1/2"H x 8 1/2"W x 4 1/4"D
- Patent Applied For

Cat. No.	Description	Price
50937	Portable Plastic Lock Box	\$64.45



Mini Wall Lock Box

- Lock rails hold up to 8 padlocks
- Transparent window lets you view contents from outside
- Slot in front allows keys to be inserted when locked
- Pre-drilled holes for easy wall-mounting
- Comes with 6 hooks for hanging keys, locks...
- Box body dimensions: 6 1/8"H x 4"W x 5 1/2"D

Cat. No.	Description	Price
50938	Miniature Wall Lock Box	\$46.02



Acrylic Wall Lock Boxes

- Pre-drilled holes for easy wall mounting
- Pre-attached plastic hooks for hanging keys, tag stubs, etc.

Dimensions (H x W x D)	Locks	Key Hooks	Cat. No.	Price
6"x6"x2 1/2"	6	3	LG003E	\$51.54
7 1/2"x12"x2 1/2"	10	8	LG008E	\$56.46
7 1/2"x15 3/4"x2 1/2"	14	18	GLOBOX	\$76.53



Portable / Wall Lock Box

- Accommodates 8-10 locks
- Dimensions: 6"H x 15"W x 3"D

Cat. No.	Description	Price
LG252M	Metal Wall Lock Box	\$97.17

Cable & Chain Lockouts / Hasps



All Purpose Cable Lockout

- Two types of interchangeable cables:
 - Nonconductive nylon cable (1/8" dia.)
 - Sheathed metal cable (3/16" dia.)
- Patent Applied For
- Max. Service temperature of cables:
 - Sheathed: -30° to 180° F
 - Nylon: -40° to 200° F

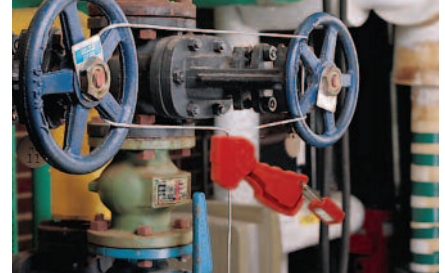
Cat. No.	Description	Price
50943	w/ 8' sheathed cable	\$41.41
50941	w/ 8' nylon cable	\$43.72



Mini Cable Lockout

- Revolutionary new cable lockout perfect for use on disconnect switches, small gate valves, etc.
- 6 lock holes accommodate most padlock shackles and hasps
- Body dimensions: 4" diameter x 1 3/4" deep
- Cable dimensions: 1/16" diameter x 8' length
- Patent Applied For

Cat. No.	Description	Price
50940	w/ Steel Cable	\$34.50
51442	w/ Nylon Cable	\$34.50



Original Cable Lockout

- Comes with 6' galvanized steel cable (1/8" dia.)
- Patent No. 5,823,020

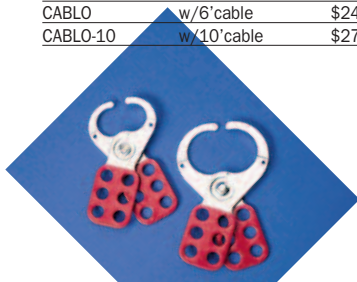
Cat. No.	Color	Price
65318	Red	\$40.97



Economy Cable Lockout

- Unique lockout device accepts up to six 9/32" diameter padlocks
- Cable Diameter 3/16"
- Plastic-coated steel cable comes in two lengths: 6' and 10'

Cat. No.	Description	Price
CABLO	w/6' cable	\$24.50
CABLO-10	w/10' cable	\$27.93



Steel Lockout Hasps

- Vinyl-coated high tensile steel
- Lock holes: 3/8" diameter
- Standard package: 12 hasps

Cat. No.	Description	Price
65375	1" Diameter Jaws	\$88.14
65376	1 1/2" Diameter Jaws	\$105.15



Chain Lockout Kit

- Components
 - 3 - 11/2" Steel Lockout Hasp (T220)
 - 3 - Padlocks (LC044-RD)
 - 3 - Lockout Tags w/Ties
 - 1 - 48" Chain
 - 1 - Durable Carrying Case (7"H x 12"W x 5"D)

Cat. No.	Description	Price
LK041R	Single Lockout Kit	\$104.33



Yellow Lockout Hasps

- 12 gauge steel that is epoxy coated
- Standard package: 1 hasp
- Lock holes: 5/16" diameter

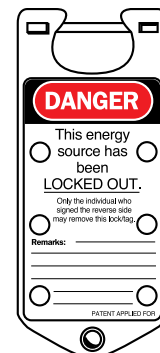
Description	Cat. No.	Price
1 1/2" diameter	T220	\$7.23
1" diameter	T218	\$6.83



Labeled Lockout Hasps

- Constructed from tough 5052 anodized aluminum alloy
- Includes tamperproof locking tabs
- Write-on label surface
- Lock holes: 5/16" diameter
- Dimensions: 7 1/4"H x 3"W x 3/16"D
- Standard pkg. 5

Rev. Side #1	Rev. Side #2	Color	Price
65960	65970	Red	\$71.45
65962	65972	Blue	\$71.45
65963	65973	Green	\$71.45
65964	65974	Gold	\$71.45
65967	65975	Combo	\$71.45



Reverse Side #1



Reverse Side #2

Valve Lockouts



Universal Valve Lockout

- New open-ended clamp fits over closed rings, wide handles
- Can also be used to lock out large levers, T-handles and other mechanical devices
- Cable attachment offers choice of 1/8" nonconductive nylon or sheathed metal cable
- Small UVLO: use on handle widths up to 1" (max handle thickness of 0.6")
- Large UVLO: use on handle widths up to 1.6" (max handle thickness of 1.1")
- Patent No. 5,415,017 additional applied for
- Includes blocking arm
- For additional dimensional specifications, go to www.bradyid.com/lockout

Cat. No.	Description	Price
51394	Small w/8' Sheathed Cable	\$75.98
51390	Small w/8' Nylon Cable	\$78.28
51392	Large w/8' Sheathed Cable	\$81.73
51388	Large w/8' Nylon Cable	\$84.03



Ball Valve Lockout

- Made from ultra-tuff polypropylene
- Small lockout (BS07A) locks out pipes 1/2" to 2 1/2" in diameter
- Small lockout can also be used to lock valves OPEN on pipes from 1/2" to 1 1/4" in dia.
- Large lockout (BS08A) locks out pipes 2" to 8" in diameter
- Patent No. 6,622,536

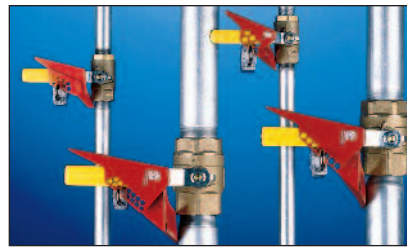
Description	Red	Price
Small Ball Valve Lockout	BS07A	\$24.50
Large Ball Valve Lockout	BS08A	\$49.04



Gate Valve Lockouts

- Made of rugged injection-molded polypropylene
- Service temperatures from -25°F to 200°F
- Unique knockout center accommodates OS&Y or "rising stem" valves
- Accepts locks with shackles up to 3/8" in diameter
- Supplied with danger labels in English, Spanish and French

Valve Handle Diameter	Cat. No. Red	Price
1"-2 1/2"	65560	\$16.39
2 1/2"-5"	65561	\$27.49
5"-6 1/2"	65562	\$32.91
6 1/2"-10"	65563	\$41.22
10"-13"	65564	\$79.96



Standard Ball Valve Lockout

- Easy to use, single-piece design locks quarter-turn ball valves in OFF position
- 65692, 65669 and 65693 are made of powder-coated steel
- 65666 is made of super-tough nylon (service temp -40° to 248° F)
- Patent No. 5,003,797

Cat. No.	Shackle Diameter*	Valve Size Pipe Dia.	Handle Width*	Handle Thickness*	Price
65666	9/32"	1/4" - 1"	1"	3/4"	\$22.86
65692	3/8"	1/4" - 1"	1"	3/4"	\$25.85
65669	9/32"	1 1/4" - 3"	1 3/8"	1 1/4"	\$37.57
65693	3/8"	1 1/4" - 3"	1 3/8"	1 1/4"	\$37.97

*Maximum



Adjustable Gate Valve Lockout

- Versatile lockout adjusts to fit 1" to 6 1/2" valve handles, replacing 3 conventional gate valve lockouts
- Durable polypropylene is resistant to temperature changes from -13°F to 194°F

Catalog Number	Price
64057	\$33.34



EZ Panel Loc™ System

- Works on wide range of breakers, including single- and multi-pole configurations
- Makes use of unique lock rail system:
 - Allows panel door to be closed even when lockouts are in place
 - Accommodates multiple locks
 - Keeps weight off the breakers
 - Patent No. 6,727,441

Description	1 Pack	Price	6 Pack	Price
Snap-On Device	51252	\$22.21	65815	\$117.93
Clamp-On Device	51254	\$22.21	65810	\$117.93
4" Lock Rail	51256	\$7.74	65814	\$27.83
8" Lock Rail	51258	\$9.96	51260	\$41.13

Circuit Breaker Lockouts



120V Snap-On Breaker Lockout

- Designed for 120V breakers that have holes in the switch tongue
- Dual cavities accommodate different size switch tongues
- Accepts locks shackles up to 3/32" in diameter
- Dimensions: 0.83"H x 0.35"W x 2.15"L
- Patent No. 5,122,624

Catalog Number	Qty	Price
65387	1/pkg	\$4.68
65688	6/pkg	\$25.27



Clamp-On Breaker Lockouts

- Works on wide range of single-pole and internal-trip multi-pole breakers!
- Made of rugged polypropylene and impact modified nylon
- Detachable cleats (included) expand the range of applicable breakers
- Accepts locks shackles up to 3/32" in diameter
- Patent No. 5,500,495

Cat. No.	Description	Qty	Price
65396	120/277V Clamp-On	1/pkg	\$9.40
65965	120/277V Clamp-On	6/pkg	\$57.64
65397	480/600V Clamp-On	1/pkg	\$10.56
65966	480/600V Clamp-On	6/pkg	\$56.99



Universal Multi-Pole Breaker Lockout

- Single device works with most major multi-pole breakers that employ a tie-bar
- Made of durable impact-modified nylon
- Compatible with GE, ITE, Sylvania, Challenger, Bryant, Westinghouse, General Switch Co., and more!
- Patent No. 5,300,740

Catalog Number	Qty	Price
66321	1/pkg	\$9.40
66320	6/pkg	\$51.64



Oversized Breaker Lockout

- Oversized 480/600V frame lockout fits breaker switches up to 2 1/4" wide and 7/8" thick
- Made of durable polypropylene and glass filled-impact-modified nylon
- New blade design gets better grip, works on even more breaker models!
- Patent #5,500,495

Catalog No.	Qty.	Price
65329	1/pkg	\$15.26
65321	6/pkg	\$68.10



480-600V Breaker Blockout

- Perfect for locking out oversized and irregularly shaped switches
- Self-adhesive backed rails are permanently installed into an electrical panel – simply clean panel surface and adhere – no drilling required!
- Blocking bars (red and green) are 7 1/2" long
- Red blocking bar indicates locked off, green bar indicates locked on

Cat. No.	Description	Price
90891	Breaker Block Kit	\$22.98

Kit includes 2 yellow mounting rails, 1 red blocking bar, 1 green blocking bar and 3 alcohol wipes.



Miniature Circuit Breaker Lockouts

- The Lockout easily installs with the aid of a push button. The Tie Bar Style Lockout has a convenient thumb wheel for quick application.
- Recommended to lock with lightweight padlocks, can take locks w/ shackle dia. up to 3/32"
- Material: Glass-filled nylon
- Patent # 5,322,980 # 5,300,740 #6,844,512

Cat. No.	Type	Qty	Price
90844	POS	1	\$11.70
90845	POS	6	\$64.58

Not Sure Which Breaker Lockout to Use?

Check out Brady's Circuit Breaker Lockout Reference Guide. We've tested over 750 makes and models of breakers, including popular brands such as Allen Bradley, ABB, Cutler Hammer, General Electric, Siemens, Square D and more! The Reference Guide makes it easy to find the right lockout device for the breakers you use. Download the reference guide from www.bradyid.com/lockout.



Other Electrical Lockouts



3-in-1 Plug Lockout

- Accommodates high and low-voltage plugs up to 3" in diameter and 5 1/2" in length
- 2 sliding top lids can be used individually or together to accommodate small, medium and large-diameter cords up to 1 1/4"
- Made of bright yellow thermoplastic

Cat. No.	Description	Price
PL023	English	\$15.03
PL023-BI	English/Spanish	\$15.53



Hubbell Plugout™

- Small version accepts plugs with maximum 2 3/4" diameter and 4 3/4" length with 1" cord
- Large version accepts plugs w/ maximum 4 1/2" dia. and 10 3/20" length with 3/20" cord
- Standard package: one device

Cat. No.	Description	Price
65695	Small Plugout™	\$27.49
65968	Large Plugout™	\$33.72



Wall Switch Lockout

- Clear plastic lockout uses existing wall plate screws to mount
- Patented non-hinge design
- Lock not included
- Patent #5,543,593, 5,260,528

Cat. No.	Description	Price
WSLO	Wall Switch Lockout	\$7.37



Brady Plug Lockouts

- Small 110V plug lockout: 2"H x 2"D x 3 1/2"W with 1/2" diameter hole for cable
- Large 220/500V plug lockout: 3 3/4"H x 3 1/4"D x 7"W with 1" diameter hole for cable

Cat. No.	Description	Price
65674	Small 110V Plugout	\$14.42
65675	Large 220/500V Plugout	\$17.45



Stopower™ Plug Lockouts

- Ideal for office equipment and other frequently locked out cords
- For use on 2 or 3 pronged polarized plugs
- Cord cannot be plugged in with Stopower™ in place

Cat. No.	Description	Price
65673	Red – 1 device/pkg.	\$15.35

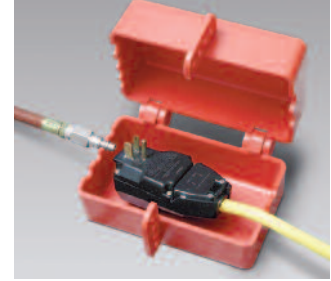
To order multiple Stopower Plug Lockouts that are keyed alike, use catalog #98209



Pneumatic Quick-Disconnect Lockout

- Device is applied to the male fitting, isolating equipment from all compressed air sources
- Accommodates the majority of 1/4", 3/8", 1/2" male fittings
- Lockout using a padlock with 1/4" or 3/32" shackle

Catalog Number	Price
64221/pkg of 1	\$20.79



Electrical/Pneumatic Plug Lockout

- Accommodates a large variety of electrical plugs up to 3 1/2" in diameter and 5" in length as well as male air hose connectors
- Holes accommodate electrical cord or "necked down" pneumatic male fittings commonly attached to compressed air hose
- Works on 110V, 220V & 550V plugs
- Made of Polystyrene material

Cat. No.	Description	Price
PL027E	Electrical/Pneumatic Plug LO	\$17.76



Wall Switch Lockout

- Device may be used with most wall-mounted switches
- Easy to install using existing screws
- Locks switch in "on" or "off" position
- Lock not included
- Patent No. 5,260,528

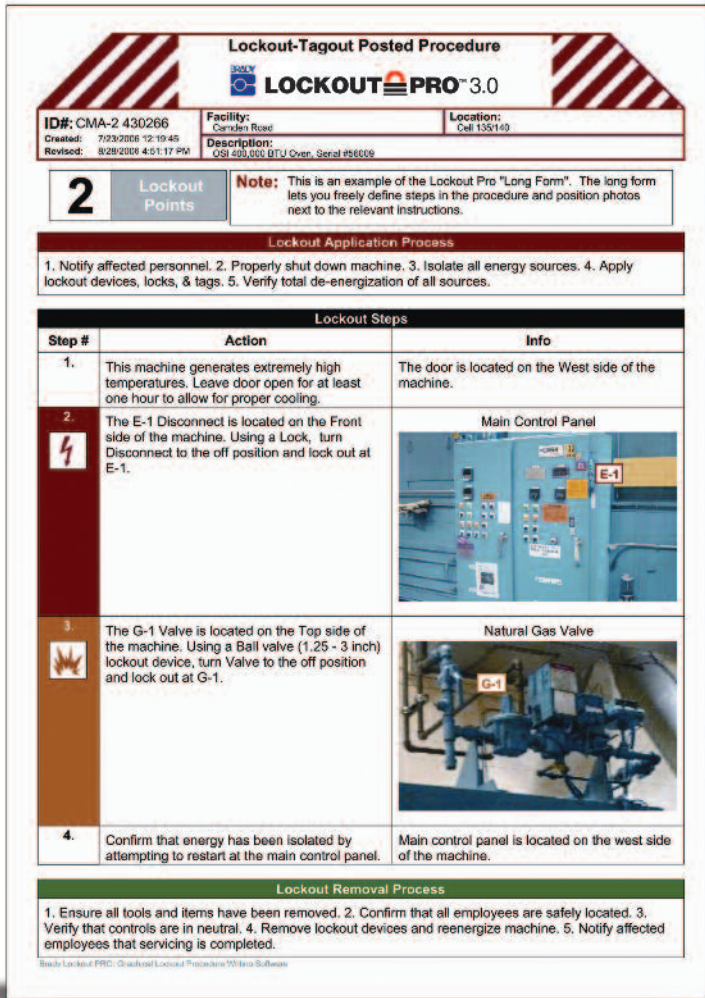
Cat. No.	Quantity	Price
65392	1/Pkg.	\$10.22
65696	6/Pkg.	\$55.53



AC Sensor

- Selected by OSHA Electrical Technical Equipment Committee as the only instrument of its type for use by OSHA compliance officers to identify and cite electrical hazards of 50 - 1000 volts AC
- CAT IV rated and UL Listed
- Patent #5,103,165

Catalog Number	Price
65269	\$41.36



Lockout Pro™ Graphical Procedure Writing Software

Create clear, easy-to-follow procedures in minutes

- Start immediately with easy-to-use templates and built-in defaults
- Access a database of standard graphics, terms, and information
- Insert images to create clear, machine-specific procedures that identify the location of control points
- Print to a standard inkjet or laser printer, or to Brady's GlobalMark® 2 Industrial Label Maker or HandiMark® Portable Label Maker
- Provide viewing and printing access to users in multiple locations with the FREE viewer and HTML viewer applications
- Export to CMMS or ERP

Create, maintain, train, update – with one program

- Use Lockout PRO software's built-in sample energy control policy to develop your own comprehensive energy control program
- Create machine-specific lockout procedures for different locations; ensure that location-specific safety needs are addressed
- Manage and update your procedures with automatic time- and date-stamping
- Train your employees with online tutorials and built-in video training clips in Enterprise versions
- Access current OSHA lockout/tagout standard with a few clicks
- Call to learn about a separate optional annual audit service for your Lockout Pro procedures



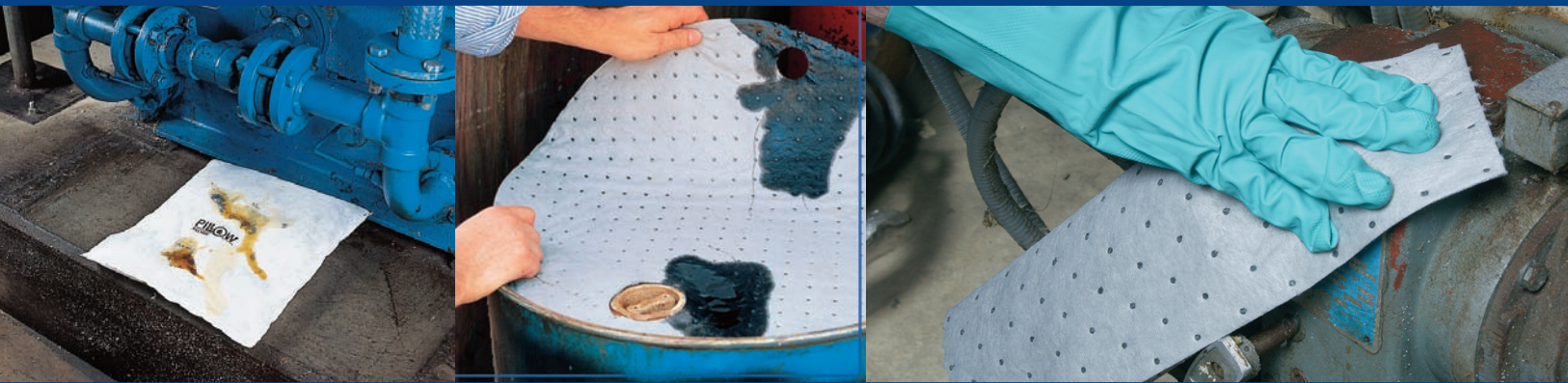
Cat. No.	Description	Price
102907	Lockout Pro Desktop Software	\$795.00
102910	Lockout Pro Enterprise Corporate w/ free web viewer	\$11,995.00
102909	Lockout Pro Basic (Only 3 Administrators)	\$2,495.00
102911	Additional Administrator (adds 1 admin)	\$695.00

bradyid.com/lockouttagout

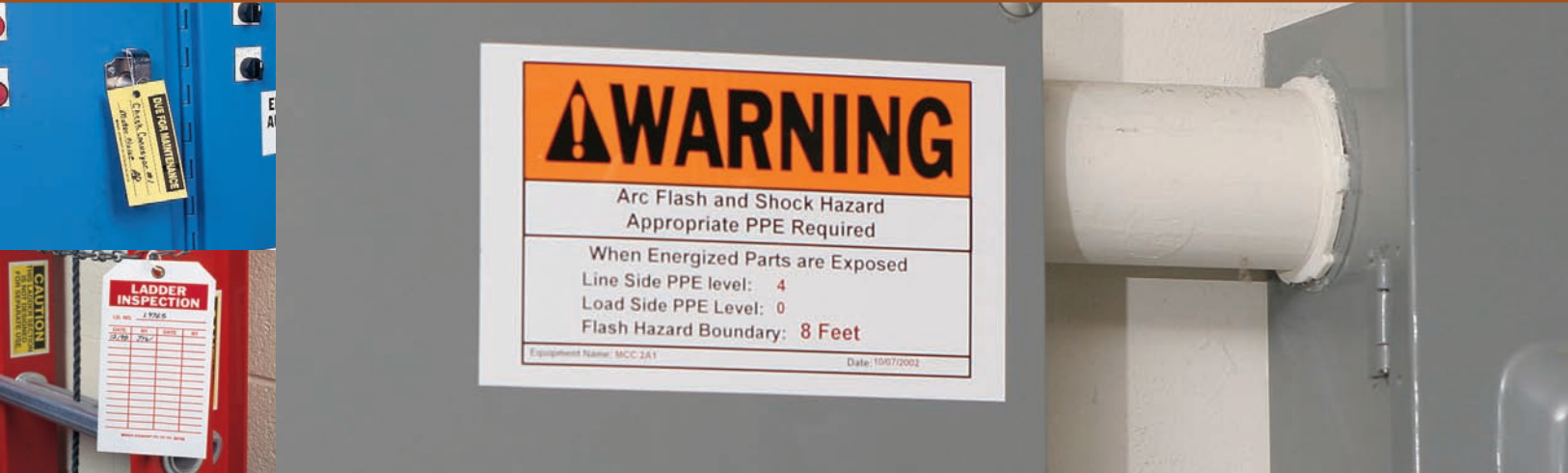


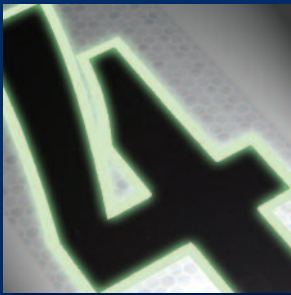
Sorbents
41

Lockout/Tagout
44



Labels & Tags
38





Supplier warrants that all goods will be free from defects in materials and workmanship for a period of six (6) months from the time of delivery to the Consumer by Supplier. Repair, replacement or credit (at Supplier's option) upon return of the goods is Purchaser's sole remedy for an such losses, expenses, inconveniences or damages. The limited warranty does not apply if (1) the defect is the result of use or handling of the goods in a manner, circumstance or purpose other than those intended, approved or instructed by Supplier; or (2) the goods are misused or abused or there is evidence of tampering, mishandling, neglect, accidental damages, modification or repair without the approval of Supplier.

THE LIMITED WARRANTY PROVIDED ABOVE IS IN LIEU OF ALL OTHER WARRANTIES, EXPRESS OR IMPLIED, INCLUDING WITHOUT LIMITATION THE IMPLIED WARRANTIES OF MERCHANTABILITY AND FITNESS FOR A PARTICULAR PURPOSE. THE LIMITED WARRANTY IS IN LIEU OF ANY OTHER LIABILITY OR OBLIGATION OF SUPPLIER FOR LOSSES, EXPENSES, INCONVENIENCES OR DAMAGES (WHETHER SPECIAL, INDIRECT, SECONDARY, OR CONSEQUENTIAL) ARISING FROM OWNERSHIP, USE, OR NON-USE OF THE GOODS. PURCHASER HEREBY WAIVES ANY RIGHTS THAT IT MIGHT OTHERWISE BE ENTITLED TO IN CONNECTION WITH THE MATTERS COVERED IN THIS PARAGRAPH.

PRICES AND AVAILABILITY ARE SUBJECT TO CHANGE WITHOUT NOTICE

Brady Worldwide, Inc.
6555 W. Good Hope Rd.
Milwaukee, WI 53223
1-888-272-3946
www.bradyid.com



Y911554

© 2008 Brady Worldwide, Inc.
All Rights Reserved.
08-08--AA

 **BRADY**[®]
WHEN PERFORMANCE MATTERS MOST™