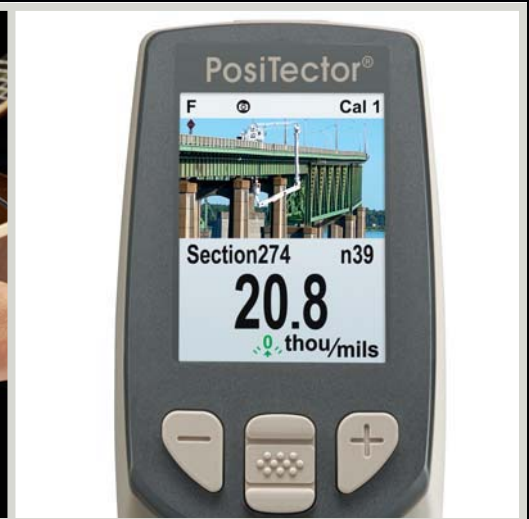
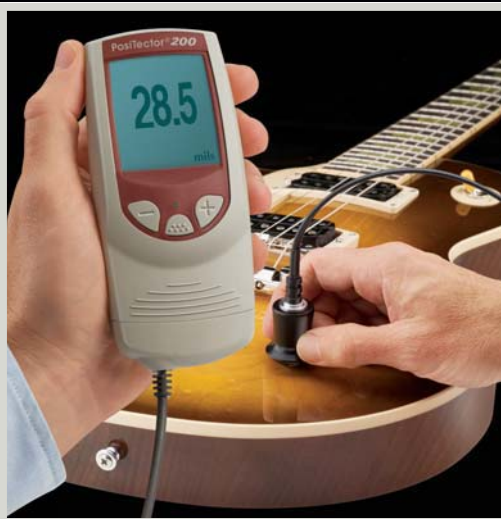
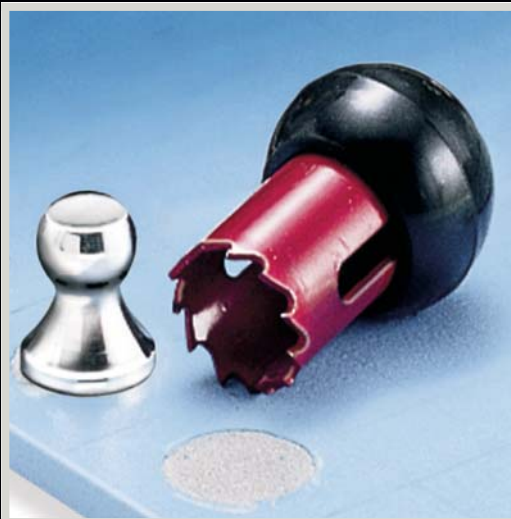


## Coating Thickness Gages and Inspection Instruments



## Table of Contents

		PG.
<b>Coating Thickness Gages for Metals</b>		
<b>PosiTector 6000</b>	our most popular electronic gage for measuring coating thickness on all metals. Easy-to-use features for rugged environments.	<b>3 - 6</b>
<b>PosiTest DFT</b>	basic electronic gage for measuring coatings on all metals	<b>7 - 8</b>
<b>PosiTest FM/GM</b>	the industry standard, for measuring non-magnetic coating thickness (paint, plating, galvanizing, etc.) over steel.	<b>9 - 10</b>
<b>PosiPen</b>	small unique magnet perfect for measuring small, hot or hard-to-reach areas on steel parts.	<b>11 - 12</b>
<b>Coating Thickness Gages for Non-Metals</b>		
<b>PosiTector 200</b>	ultrasonic coating thickness gage measures TOTAL thickness or up to 3 individual layers on wood, concrete and more	<b>13 - 16</b>
<b>Coating Thickness Gages for Uncured Powder</b>		
<b>PosiTector PC</b>	Non-contact Powder Checker coating thickness gage measures uncured powder and predicts cured thickness.	<b>17 - 18</b>
<b>Inspection Instruments</b>		
<b>PosiTest AT</b>	Adhesion Tester measures adhesion of coatings to metal, wood, concrete and other substrates. Available in two models <i>Manual</i> or <i>Automatic</i> .	<b>19 - 22</b>
<b>PosiTector DPM</b>	Dew Point Meter measures and records climatic parameters including: air temperature, surface temperature, relative humidity, dew point temperature and the difference between surface and dew point temperatures.	<b>23 - 26</b>
<b>PosiTector UTG</b>	Ultrasonic Thickness Gage is ideal for measuring wall thickness and the effects of corrosion or erosion on tanks, pipes or any structure where access is limited to one side. Thru-Paint model available.	<b>27 - 30</b>
<b>PosiTector SPG</b>	Surface Profile Gage measures and records peak to valley surface profile heights. There are 2 models to choose from. Standard or Advanced.	<b>31 - 32</b>
<b>Standards</b>		
<b>DeFelsko Thickness Standards</b>	Thickness standards are ideal for checking calibration and operation of coating thickness gages and are an important component in fulfilling both ISO and in-house quality control requirements.	<b>33 - 34</b>



# PosiTector® 6000 Series

Coating Thickness Gages for  
**ALL** Metal Substrates



**DeFelsko®**

The Measure of Quality

# PosiTector® 6000 Series

## All Gages Feature...

### Simple

- Ready to measure—no calibration adjustment required for most applications
- Enhanced one-handed menu navigation
- Flashing display—ideal in a noisy environment
- RESET feature instantly restores factory settings

### Durable

- Solvent, acid, oil, water and dust resistant—weatherproof
- Wear-resistant probe tip
- Shock-absorbing, protective rubber holster with belt clip
- Two year warranty on gage body AND probe

### Accurate

- Certificate of Calibration showing traceability to NIST included
- Built-in temperature compensation ensures measurement accuracy
- Hi-RES mode increases displayed resolution for use on applications that require greater precision
- Conforms to national and international standards including ISO and ASTM

### Versatile

- Fully interchangeable probes are compatible with ALL gage bodies
- Multiple Calibration adjustment options including 1 point, 2 point, known thickness, average zero
- Selectable display languages
- Hi Contrast backlit display for bright or dark environments
- Flip display enables right-side-up viewing
- Extended cables available (up to 75 m/250 ft) for remote measuring
- Uses alkaline or rechargeable batteries (built-in charger)

### Powerful

- Continually displays/updates average, standard deviation, min/max thickness and number of readings while measuring
- HiLo alarm audibly and visibly alerts when measurements exceed user-specified limits
- FAST mode—faster measurement speed for quick inspection
- USB port for fast, simple connection to a PC and to supply continuous power. USB cable included
- USB mass storage—stored readings and graphs can be accessed using universal PC/Mac web browsers or file explorers. No software required
- Every stored measurement is date and time stamped
- Software updates via web keep your gage current
- Connects to PosiTector.net (see far right panel)

## Probes available for a variety of applications



For measuring paint, powder, etc. on all metals...



...and for measuring galvanizing, plating, anodizing and more.

## Gage Selection...

### Select Substrate

- F** — for ferrous metals (steel and cast iron)
- N** — for non-ferrous metals (aluminum, copper, etc.)
- FN** — for all metal substrates—Gage automatically recognizes the substrate and takes a measurement

### Select Standard or Advanced Features

#### Standard Models

Includes ALL features as shown on left plus...

- Monochrome display
- Storage of 250 readings—stored readings can be viewed or downloaded

#### Advanced Models

Includes ALL features as shown on left plus...

- Hi Contrast reversible color LCD
- Storage of 100,000 readings in up to 1,000 batches and sub-batches
- Onscreen help, real time graphing, picture prompting and batch notes
- Data transfer via USB to a PC or via Bluetooth® Wireless Technology to a PC or printer
- Scan mode—take continuous readings without lifting the probe
- Multiple stored calibration adjustments for measuring on a variety of substrate conditions
- SSPC PA2 feature determines if film thickness over a large area conforms to user-specified min/max levels
- PSPC 90/10 feature determines if a coating system complies with an IMO performance standard for protective coatings

### Select from a variety of measurement ranges and probe styles

(see back page ordering guide)

Heavy-duty, gold-plated locking connector for industrial environments



Removable Built-in Probe can be detached and replaced with any one of our wide variety of probes including separate probes and microprobes



FKS

90°

0°

45°

Regular

## Rugged Features...

Sealed USB Port for communicating with a PC or Mac

Water and dust resistant—weatherproof

Hi resolution color LCD

Scratch/solvent/impact resistant lens

Multi-function navigation button

Solvent, acid, oil resistant, hi-grade, industrial strength housing

**Advanced Model shown in Memory Mode**

Quality high-flex cable and strain relief

Stainless steel probe with knurled finger grip

Strong wear-resistant ruby-tipped probe

All Regular Separate Probes are suitable for underwater use



where your gage meets the cloud™



**A free web-based application offering secure centralized management of thickness readings**

- Synchronize measurement data when connected via USB—measurements are uploaded to a secure server; images and batch notes are downloaded to your gage
- Manipulate uploaded data using a standard internet web browser from any location in the world—job site or head office
- Generate reports and graphs with annotations and user selected images
- Share measurement data with authorized users via a secure login from any computer and most web enabled devices
- Export data to XML and text files
- Visit [www.defelsko.com/PosiTectorNET](http://www.defelsko.com/PosiTectorNET) for a demonstration



Standard model shown in Statistics Mode with shock-absorbing, protective rubber holster














High-Range Probes for thick coatings, e.g. fire proofing, tank linings, etc.



Flip Display enables right-side-up viewing

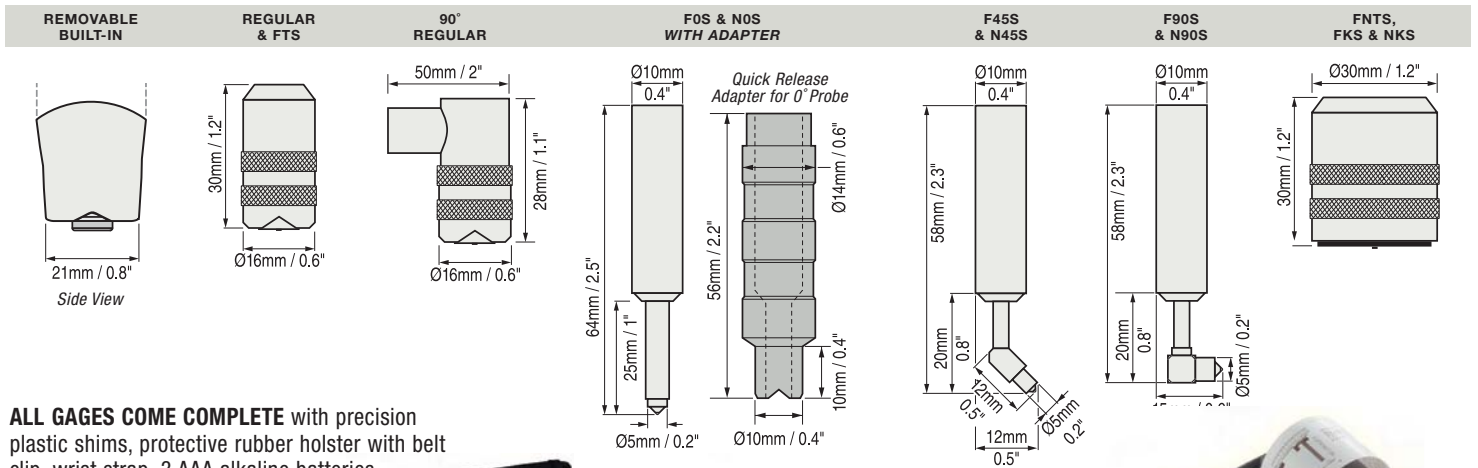


Microprobe series for small parts and hard-to-reach areas

<b>PosiTector® 6000 Series</b>  <b>ORDERING GUIDE</b>		Our most popular Removable Built-in and Regular Separate probe models			90° Regular probe for tight spots	Ideal for anodized aluminum	Microprobes – Our smallest probes for small parts or hard-to-reach areas			Removable Built-in and Separate probes for thick protective coatings; epoxy, rubber, intumescent fire proofing and more		
												
<b>Non-Magnetic Coatings over FERROUS Metals (Steel and Iron)</b>	Standard	F1	FS1	FRS1		FOS1	F45S1	F90S1	FT1	FTS1	FKS1	
	Advanced	F3	FS3	FRS3		FOS3	F45S3	F90S3	FT3	FTS3	FKS3	
<b>Non-Conductive Coatings on NON-FERROUS Metals (Aluminum, Copper, etc.)</b>	Standard	N1	NS1	NRS1	NAS1	NOS1	N45S1	N90S1			NKS1	
	Advanced	N3	NS3	NRS3	NAS3	NOS3	N45S3	N90S3			NKS3	
<b>Combination ALL METALS</b>	Standard	FN1	FNS1	FNRS1						FNTS1		
	Advanced	FN3	FNS3	FNRS3						FNTS3		
<b>Range</b>		0 – 60 mils 0 – 1500 µm			Ferrous: 0 – 45 mils and 0 – 1150 µm Non-Ferrous: 0 – 25 mils and 0 – 625 µm			0 – 250 mils 0 – 6 mm		0 – 500 mils 0 – 13 mm		
<b>Accuracy*</b>		±(0.05 mils + 1%) 0 – 2 mils ±(0.1 mils + 1%) > 2 mils  ±(1 µm + 1%) 0 – 50 µm ±(2 µm + 1%) > 50 µm			±(0.02 mils + 1%) 0 – 4 mils ±(0.1 mils + 3%) > 4 mils  ±(0.5 µm + 1%) 0 – 100 µm ±(2 µm + 3%) > 100 µm			±(0.5 mil + 1%) 0 – 100 mils ±(0.5 mil + 3%) > 100 mils  ±(0.01 mm + 1%) 0 – 2.5 mm ±(0.01 mm + 3%) > 2.5 mm		±(1 mil + 3%) 0 – 500 mils  ±(0.02 mm + 3%) 0 – 13 mm		
<b>Matching DeFelsko Calibration Standards</b>		STDS1 STDA1			STDS2 STDA2			STDP1		STDP5		

\*Accuracies are stated as a fixed value plus a percentage of the gage's actual reading. EXTENDED CABLES available for underwater or remote measuring. Specify length when ordering.

## Probe Details



**ALL GAGES COME COMPLETE** with precision plastic shims, protective rubber holster with belt clip, wrist strap, 3 AAA alkaline batteries, instructions, nylon carrying case with shoulder strap, protective lens shield, Long Form Certificate of Calibration traceable to NIST, USB cable, two (2) year warranty.

**SIZE:** 137 x 61 x 28 mm (5.4" x 2.4" x 1.1")

**WEIGHT:** 140 g (4.9 oz.) without batteries

Conforms to ISO 2178/2360/2808, PrEN ISO 19840, ASTM B499/D1186/D1400/D7091/E376/G12, BS3900-C5, SSPC-PA2 and others



## Options

**Bluetooth Printer** receives data from Advanced models

**AC Power Kit** for continuous operation or battery charging—works in any country

**Coating Thickness Standards** to fulfill both ISO and in-house quality control requirements

**Rechargeable Batteries**—a set of eneloop NiMH AAA batteries

**Protective Lens Shields** protect the display from overspray



**DeFelsko®**  
The Measure of Quality

**DEFELSKO CORPORATION**  
802 Proctor Ave., Ogdensburg, New York 13669-2205 USA  
Toll Free 1-800-448-3835 Tel: +1-315-393-4450 Fax: +1-315-393-8471  
techsale@defelsko.com www.defelsko.com

  
Made in U.S.A.

# PosiTest<sup>®</sup> DFT

## Coating Thickness Gage

### *Ideal for...*

- Powder Coaters
- Paint Applicators
- Coating Inspectors
- Painting Contractors
- Automotive Refinishers

### *2 Models...*

**Ferrous** for STEEL

**Combo** for ALL METALS



simply  
measures

**DeFelsko<sup>®</sup>**  
*The Measure of Quality*

# PosiTest<sup>®</sup> DFT

## Coating Thickness Gage

Actual Size

### Two Models

- **PosiTest DFT Ferrous**  
measures non-magnetic coatings on steel.
- **PosiTest DFT Combo**  
measures both non-magnetic coatings on steel AND non-conductive coatings on aluminum, brass, etc. **Automatically** recognizes the substrate and takes a measurement.



### Features

- Fast, repeatable measurements
- No calibration required for most applications
- ZERO feature for rough or curved surfaces
- Handy RESET feature when no zero reference is available
- Strong, wear-resistant, ruby-tipped probe
- Unique FLIP Display enables right-side-up viewing in any position
- Audible and visible measurement indication
- V-groove in probe for positioning on cylindrical parts
- Mils/Microns switchable
- Basic instructions on the back of each gage
- Built-in wrist strap for added convenience and safety
- 2 Year Warranty

### Specifications

Measurement Range	0 – 40 mils	0 – 1000 µm
Accuracy	±(0.1 mils + 3%)	±(2µm + 3%)
Size	4 x 1.5 x 0.9 in.	100 x 38 x 23 mm
Weight	2.5 oz.	70 g



**Unique FLIP Display enables right-side-up viewing in any position**



**Gage Comes Complete** with built-in probe, wrist strap, plastic shims, hard shell storage case, AAA battery, instructions and two (2) year warranty.

**Conforms to:** ISO 2178/2360/2808, prEN ISO 19840, ASTM B244/B499/B659/D1186/D1400/D7091/E376/G12, BS3900-C5, SSPC-PA2 and others. *Certificate of Calibration traceable to NIST available.*

© DeFelsko Corporation USA 2008. All Rights Reserved. Technical Data subject to change without notice. U.S. Patent # Re.35,703 • Printed in U.S.A. PDFT.v.LW/W0804



# PosiTest<sup>®</sup> *Accurate & Dependable*

*For the non-destructive measurement of non-magnetic coatings (paint, enamel, galvanizing, metalizing, plating, etc.) on STEEL*



Easily measures  
small parts of  
almost any shape



Stable design with additional  
tail-end support. No annoying  
rocking during measurement.

**DeFelsko<sup>®</sup>**  
*The Measure of Quality*

# PosiTest<sup>®</sup> *Accurate & Dependable*

**For the non-destructive measurement of non-magnetic coatings (paint, enamel, galvanizing, metalizing, plating, etc.) on STEEL**

## ACCURATE

- Certificate of Calibration showing traceability to N.I.S.T. included with every gage
- Matching Calibration Standards and Procedures available for every model
- Highly wear resistant Carbide Probe for longest life and continuous accuracy
- Remove center of dial cover for easy calibration adjustment
- Conforms to national and international standards

## DURABLE

- Extra rugged housing, not affected by mechanical shock, water, acid or solvents
- Unique overall design, fully supported, positive positioning, no pivoting tendencies during measurement
- Can be used fully supported or with only the front probe area contacting the surface
- Functions on a permanent rare-earth cobalt magnet
- No batteries/electronics
- 2 year warranty

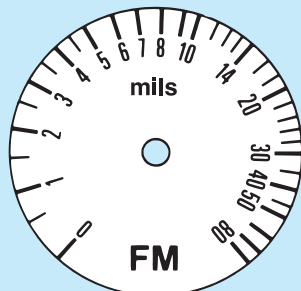
## EASY TO USE

- Positive visual and audible indicators to designate when thickness reading is established
- "V" grooves in probe housing and Gage base allow correct positioning on cylindrical objects
- Compact, lightweight, precisely balanced, independent of gravity – can be used in any position
- GO/NO-GO button can be pre-set for rapid measurement
- Probe contact and dial rotation all in a one-finger operation
- Furnished with wrist strap and instructions in a high quality leather case with belt loops for your convenience



Carbide measuring probe for long life.

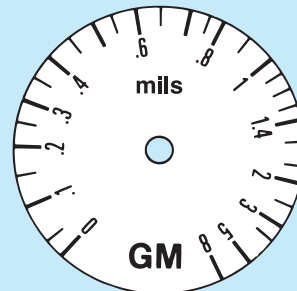
**FOR: Hot dip galvanizing, hard chrome metalizing, paint, enamel coatings on steel**



Scale FM 0–80 mils  
Tolerance: ±0.2 mils up to 4 mils  
±5% of the reading over 4 mils

Scale F 0–2000 microns  
Tolerance: ±5 microns up to 100 microns  
±5% of the reading over 100 microns

**FOR: Electroplating, thin paint films, phosphating on steel**



Scale GM 0–8 mils  
Tolerance: ±0.04 mils up to 0.8 mils  
±5% of the reading over 0.8 mils

Scale G 0–200 microns  
Tolerance: ±1 micron up to 20 microns  
±5% of the reading over 20 microns

**DeFelsko<sup>®</sup>**  
*The Measure of Quality*

**DEFELSKO CORPORATION**

802 Proctor Ave., Ogdensburg, NY 13669 USA

Toll Free 1-800-448-3835 Phone: +1-315-393-4450

Fax: +1-315-393-8471 E-mail: techsale@defelsko.com

Web: www.defelsko.com



# PosiPen®

## Coating Thickness Gage



Measures non-magnetic coatings  
such as paint, enamel, plating,  
hot-dip galvanizing on steel.

Ideal for measuring on small,  
hot or hard-to-reach surfaces.



# PosiPen<sup>®</sup> Coating Thickness Gage

*Measures non-magnetic coatings such as paint, enamel, plating, hot-dip galvanizing on steel.*

PosiPen has a very small, unique magnet which can be placed with pin-point accuracy on extremely small parts, and on peaks and valleys.

#### Used for:

- Small, hot or hard-to-reach surfaces
- Spot Checks - conveniently fits in a shirt pocket
- Hot Sprayed Coatings

#### Ideal for:

- Refineries, petrochemical plants
- Platers - electroplating, chrome, zinc, galvanizing
- Powder coaters

#### Simple

- Easy-to-Use
- Lightweight - easy to carry, just like a ball point pen

#### Durable

- No batteries/Electronics
- Rugged - not affected by mechanical shock, acid, oil, water and dust

#### Accurate

- No user adjustment required
- Certificate of Calibration traceable to NIST included
- Highly wear resistant probe tip for long life and continuous accuracy



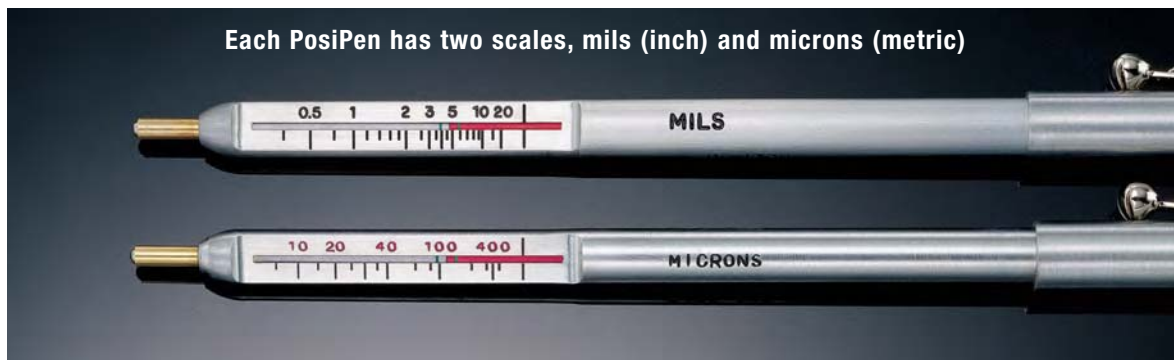
	English	Metric
<b>Range</b>	0.25 to 20 mils	5 to 500 microns
<b>Tolerance</b>	+/-10% and 0.1 mil	+/-10% and 2.5 microns
<b>Temperature</b>	-150° F to + 450° F	-100° C to + 230° C

Conforms to National and International Standards including ASTM D7091/B499, ISO 2808 and others

#### Triple Indicator: compensates for gravity

1. Use the **red/silver joining line** when the Gage is horizontal (walls).
2. Use the **green line** when the Gage is pointing straight down (green/ground).
3. Use the **blue line** when the Gage is pointing straight up (blue/sky).

**Gage comes complete** with leather pouch, instructions, Certificate of Calibration traceable to NIST, two (2) year warranty.



#### Easy to Use:

Place the tip of the PosiPen on the coated surface and allow the magnet to contact. Pull the PosiPen straight from the object to be measured while keeping close watch on the appropriate indicator. Note the reading when the magnet releases.

# PosiTector® 200 Series

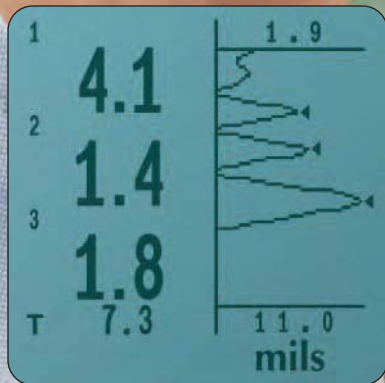
Coating Thickness  
Gages for Measuring  
on Wood, Concrete,  
Plastic and more...



Standard Model



Advanced  
Model  
measures  
up to 3  
layers with  
graphics



**DeFelsko®**

The Measure of Quality

# PosiTector® 200 Series

Non-destructively measures a wide variety of applications using proven ultrasound technology. Measures the thickness of coatings over concrete, wood, composite materials and more.

## All Gages Feature...

### Simple

- Ready to measure – no adjustment required to measure most coatings
- One-handed menu navigation
- Bi-color indicator light – ideal in a noisy environment
- RESET feature instantly restores factory settings

### Durable

- Solvent, acid, oil, water and dust resistant – meets or exceeds IP5X
- Scratch/Solvent resistant display suitable for harsh environments
- Shock-absorbing, protective rubber holster with belt clip
- Two year warranty on both gage body and probe

### Accurate

- Responsive transducers provide fast, accurate readings (up to 40 readings/minute)
- Proven non-destructive ultrasonic technique conforms to ASTM D6132 and ISO 2808
- Certificate of Calibration showing traceability to NIST included

### Versatile

- Continually displays/updates average, standard deviation, and number of readings while measuring
- Internal memory stores up to 10,000 readings in up to 1000 batches
- Built-in clock to date and time stamp each stored measurement
- USB, IR and serial output options for simple communication with printers and PCs
- Backlit display for dim or dark environments
- Mils/Microns switchable
- Selectable display languages

## Select Standard or Advanced

**Standard models** measure the total thickness of a coating system.

**Advanced models** measure total thickness of a coating system or up to 3 individual layer thicknesses in a multi-layer system. Also features graphic readout for detailed analysis of the coating system.

## Advanced Model Graphic Display

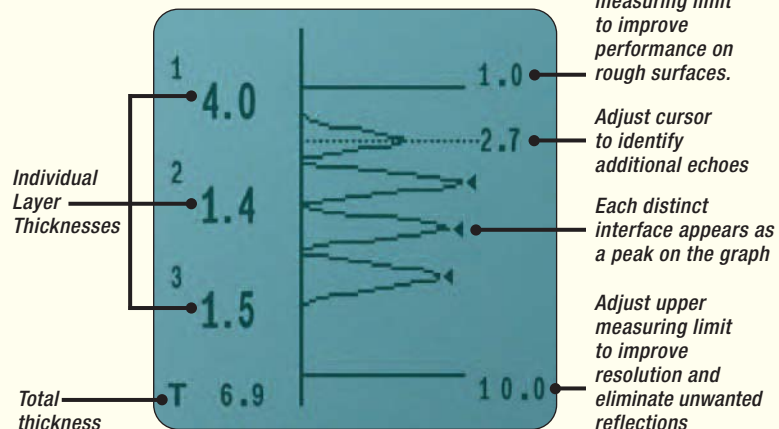


Advanced models toggle between graphic readout and statistical data displays.



Standard model measuring total coating thickness on wood

Easy-to-read graphic format provides clear, detailed analysis of coatings



## Tough **NEW** Features

- USB/IR Ports for downloading to a PC or printer

- Solvent, acid, oil, water and dust resistant—meets or exceeds IP5X

- Scratch and solvent resistant lens

**Standard model shown in Memory Mode**

- Thick impact-resistant display

- Bi-color indicator light

- Hi-grade, industrial strength housing

- Shock-absorbing, protective rubber holster

- Quality high-flex cable and strain relief

- Comfortable ergonomic finger grip reduces operator fatigue

- Plastic-tipped probe will not scratch surface



## Easily measure single or multiple layer coating thickness on a variety of substrates.



Measure paint, varnish, lacquer, etc. on wood products including cabinetry, furniture, flooring, windows and more.



Measure thick protective coatings on concrete flooring, pipes, containment structures and more.

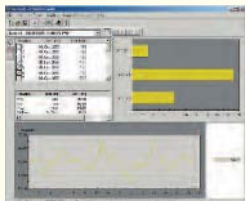


*Advanced model*

Measure protective finish topcoats over epoxy resin – commonly found in automotive, marine and aviation applications.

## Options

### PosiSoft® for Windows® analysis software



- Downloads stored readings to a PC
- Allows entry of notes and annotations
- Prints and displays basic charts and histograms
- Exports to a document or spreadsheet
- Includes USB cable
- Free updates

**IR Printer** receives data from all models via wireless infrared.



**Coating Thickness Standards** fulfill both ISO and in-house quality control requirements.

**AC Power Cable** for continuous operation.

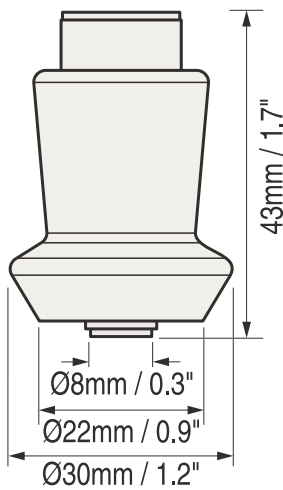
Visit [www.defelsko.com/applications.htm](http://www.defelsko.com/applications.htm) to view **Coating Inspection Application Notes.**

## SPECIFICATIONS

PosiTector <sup>®</sup> 200 Model	B/Std	B/Adv	C/Std	C/Adv
Measures Total Thickness	✓	✓	✓	✓
Measures Individual Layers		✓		✓
Graphic Display		✓		✓
Typical Applications	Polymer coatings on wood, plastic, etc.		Thicker coatings on concrete, fiberglass, etc.	
Range*	13 – 1000 microns 0.5 – 40 mils		50 – 3800 microns 2 – 150 mils	
Accuracy	±(2 microns + 3% of reading) ±(0.1 mils + 3% of reading)			
Minimum Individual Layer Thickness**	_____	13 microns 0.5 mils	_____	50 microns 2 mils
Thickness Standard	DeFelsko STDA3		DeFelsko STDP6	

\*Range limits apply to polymer coatings only. \*\*For multiple layer applications only. Dependent on material being measured.

### Probe Details



**ALL GAGES COME COMPLETE** with probe, precision plastic shims, protective rubber holster with belt clip, couplant, 3 AAA batteries, instructions, nylon carrying case with shoulder strap, Certificate of Calibration traceable to NIST, two (2) year warranty.

**SIZE:** 146 x 64 x 31 mm  
(5.75" x 2.5" x 1.2")

**WEIGHT:** 165 g (5.8 oz.)  
without batteries

Conforms to ASTM D6132  
and ISO 2808



**DeFelsko**<sup>®</sup>  
*The Measure of Quality*

**DEFELSKO CORPORATION**  
802 Proctor Ave., Ogdensburg, NY 13669 USA  
**Toll Free 1-800-448-3835** Phone: +315-393-4450  
Fax: +315-393-8471 E-mail: techsale@defelsko.com  
Web: www.defelsko.com

  
**Made in U.S.A.**



# PosiTector® **PC** *Powder Checker*®

Non-contact Uncured  
Powder Thickness Gage



Affordably measures uncured powder coatings using non-contact ultrasonic technology to automatically calculate and display a predicted cured thickness.



**DeFelsko®**  
*The Measure of Quality*

# PosiTector® **PC** Powder Checker®

Non-contact coating thickness gage measures uncured powder and predicts cured thickness.

## Simple

- Hand-held, battery operated
- No calibration adjustment required for most powders
- Thickness results appear on both base unit and probe
- Bi-color indicator light—ideal in a noisy environment

## Durable

- Solvent, acid, oil, water and dust resistant—ideal for powder coating environments
- Shock-absorbing, protective rubber holster with belt loop and magnetic mount for easy storage
- Replaceable screen protects the probe
- Two year warranty on both base unit and probe

## Accurate

- Conforms to ASTM D7378
- Advanced new technology allows measurement on small tubes, odd shapes and moving parts
- Easy calibration adjustment options improve accuracy on unusual powders or substrates

## Versatile

- Wireless probe communicates with base unit up to 10m away (30 feet). No cable to risk disturbing applied powder
- Selectable display languages
- Backlit displays for dim or dark environments
- Long battery life—uses standard alkaline batteries

## Powerful

- Continually displays/updates basic statistics including min/max and average
- USB Mass Storage of 1,000 readings in up to 100 batches
- Built-in IR port for printing stored results to an optional wireless printer
- USB port for fast and easy connection to a PC and to supply continuous power
- No download software required—gage generates formatted reports with measurement summaries and charts
- Live measurement results can be sent to a data collector or spray booth controller



Specifications	
Range	20–110 $\mu\text{m}$ (0.8–4.3 mils)
Resolution	1 $\mu\text{m}$ (0.05 mils)
Accuracy	$\pm 5 \mu\text{m}$ ( $\pm 0.2$ mil)
Measurement Time	2–5 seconds
Measurement Distance to Powder	18 mm (0.75 inch)
Measurement Area	2 mm (0.08 inch)

### BASE UNIT

Size: 146 x 64 x 31 mm (5.75" x 2.5" x 1.2")  
Weight: 165 g (5.8 oz.) without batteries

### PROBE

Size: 222 x  $\varnothing$ 50 mm (8.75" x  $\varnothing$ 2.0")  
Weight: 272 g (9.6 oz.) without batteries



### GAGE COMES COMPLETE

with base unit and probe, protective rubber holster with belt loop and magnetic mount, probe fixture, 3AAA batteries (base unit), 3AA batteries (probe), instructions, instructional video, replacement probe screen, USB cable, carabiner and wrist strap, durable carrying case, two (2) year warranty.



**DeFelsko®**  
The Measure of Quality

DeFELSKO CORPORATION  
802 Proctor Ave., Ogdensburg, NY 13669 USA  
Toll Free 1-800-448-3835 Phone: +1-315-393-4450  
FAX: +1-315-393-8471 E-mail: techsale@defelsko.com  
Web: www.defelsko.com

# PosiTest<sup>®</sup>

## *Pull-Off Adhesion Tester*

Measures adhesion of coatings to metal, wood, concrete and other substrates – revolutionary self-alignment feature and pull rate indicator.



**IP65**



**Available  
in 2 models...**

**Manual or Automatic**

**DeFelsko<sup>®</sup>**  
The Measure of Quality

Measures the force required to pull a specified test diameter of coating away from its substrate using hydraulic pressure.

## AT-A Automatic

Electronically controlled hydraulic pump automatically applies smooth and continuous pressure at a user-specified rate-of-pull

USB port for downloading

AC Adapter port charges batteries or powers instrument

Environmentally sealed, one-piece metal enclosure

Cutting tool for isolating test area

Single-use, self-aligning dollies ensure even, consistent pull-offs

Reach difficult areas with 5 ft (1.5 m) quality flex hose

Self-aligning, quick-coupling secures dollies to actuator

## Both Models Feature...

### Simple

- Portable – requires no external power source – ideal for lab and field use
- Pull Rate Indicator allows operator to easily monitor and adjust the rate of pull in accordance with international test methods
- Easily select dolly sizes, change measurement units or store readings, with the touch of a button
- Conversion charts not required – tester automatically calculates pressure based on dolly size
- Inexpensive, single-use dollies eliminate cleaning for re-use and can be kept as a permanent record
- Each kit comes with everything needed for testing

### Durable

- Environmentally sealed enclosure – weatherproof, dustproof and shockproof – meets or exceeds IP65
- Can be used in any position
- Rugged carrying case
- Two year warranty

### Accurate

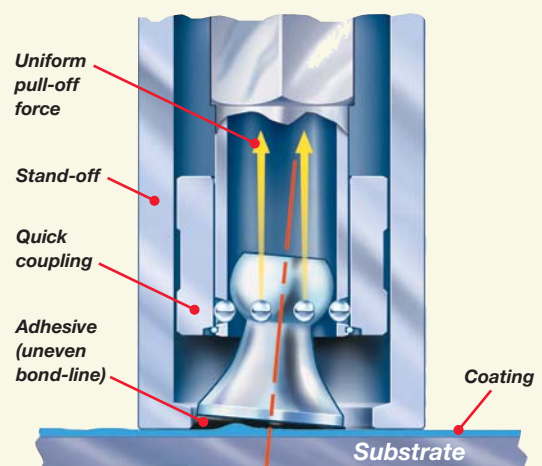
- Every PosiTest Adhesion Tester pressure system is calibrated and certified to  $\pm 1\%$  accuracy using NIST traceable load cell
- Self-aligning aluminum dolly enables accurate measurements on smooth or uneven surfaces
- Hi-grade, industrial pressure sensor ensures continued accuracy
- Conforms to national and international standards including ASTM D4541/D7234, ISO 4624/16276-1, AS/NZS 1580.408.5 and others

### Versatile

- Internal Memory stores maximum pull-off pressure, rate of pull, test duration and dolly size for up to 200 pulls
- Optional PosiSoft® software available for downloading
- 10, 14, 20 or 50 mm dollies maximize capability and measurement resolution across a wide range of bond strengths
- LCD displays pressure value in psi or MPa

### Self-Alignment Feature

The PosiTest Adhesion Tester compensates for misalignment. The self-aligning, quick-coupling actuator and spherical articulating dolly head enable uniform distribution of the pulling force over the surface being tested, preventing a one-sided pull-off.



# PosiTest® **AT-M Manual** Adhesion Tester



- Heavy-duty manual hydraulic pump designed to apply smooth and continuous pressure with a single stroke
- Pull Rate Indicator to manually monitor and adjust the rate of pull

# PosiTest® **AT-A Automatic** Adhesion Tester

- Electronically controlled hydraulic pump automatically applies smooth and continuous pull-off pressure at a user-specified rate
- Test with the simple push of a button. No twisting, pumping or cranking. No valves to close, needles to reset, or scales to adjust
- User selectable pull rates ensure compliance with international test methods for a variety of industries including metal, wood and concrete
- Built-in rechargeable batteries perform over 200 tests per charge. Continue testing with AC power while batteries recharge. Supplied with universal AC Adapter



The image shows a close-up of the LCD interface of the PosiTest AT-A Automatic Adhesion Tester. The display shows a large digital reading of '1457' in blue digits, with 'psi' to its right. Above the reading is a pull rate indicator bar with two scales: the top scale is in MPa/s (0 to 1.25) and the bottom scale is in psi/s (0 to 200). The bar is currently set to 0.5 MPa/s and 50 psi/s. To the left of the display are several control buttons: 'psi/MPa', a dolly icon, a pull rate icon, a save icon, a green 'On/Start' button, and a red 'Off/Stop' button. Red lines point from text labels to these buttons and features.

**Low battery indicator**

**Memory mode icon indicates readings are in memory**

**Select measurement units**

**Select dolly size**

**Select Pull Rate in accordance with international test methods**

**One-touch save feature stores and reviews readings in memory**

**On/Start**

**Off/Stop**

**Pull Rate indicator to easily set and monitor the specified rate of pull**

**Large, easy-to-read LCD displays pressure during measurement and holds maximum value**

**PosiTest AT-A Automatic Adhesion Tester**



PosiTest AT-M  
Manual model

**Kit Weight** (with case): 13 lbs / 6 kg

**Carrying Case Dimensions:** L – 17 in / 43 cm x W – 13 in / 33 cm x H – 6 in / 15 cm

## Specifications

<b>Dolly Size (mm)*</b>	20 mm
<b>Resolution</b>	1 psi (0.01 MPa)
<b>Accuracy</b>	± 1% Full Scale
<b>Adhesion Strength**</b>	0 – 3000 psi (0 – 20 MPa)

\*Additional dolly sizes available to meet specific measuring needs – contact supplier for details. \*\*Varies with dolly size

**Both Kits include:** Adhesion tester with digital display, built-in rechargeable NiMH batteries with charger, 20 mm aluminum test dollies (20), abrasive pad, cutting tool, adhesive with mixing sticks and palettes, cotton swabs, instruction booklet and video, Certificate of Calibration traceable to NIST, two-year warranty, and sturdy, lightweight carrying case

## Options



### 50 mm Accessory Kit

- Ideal for lower bond strength finishes such as coatings on wood, concrete and plastic
- Larger surface area of dolly provides improved low range precision and repeatability
- Range 0 – 500 psi (0 – 3.5 MPa)
- Includes 50 mm stand-off, 50 mm hole saw and 50 mm aluminum test dollies (12)

### Drilling Template for 20 mm and 50 mm Dollies

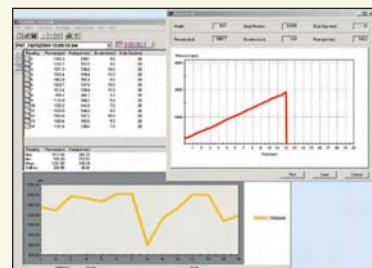
- Drilling template and drill bits to isolate test area, ideal for thicker coatings on concrete

### Adhesive Kit

- Additional adhesive, mixing sticks, palettes and cotton swabs

### PosiSoft® for Windows® analysis software

- Displays pressure, rate, test duration and dolly size for up to 200 pulls
- Calculates max, min, mean and standard deviation
- Prints and displays basic charts and histograms
- Real time graphing of individual pulls for a more detailed analysis of applied pressure over time (AT Manual only)
- Allows entry of notes and annotations
- Exports to a document or spreadsheet
- Multi-language support including English, German, Italian, Spanish and French
- Includes USB cable
- Free updates



### Dollies

- Additional supplies of 10, 14, 20 and 50 mm dollies



**DeFelsko®**  
The Measure of Quality

### DeFelsko Corporation

802 Proctor Ave. • Ogdensburg, New York 13669 USA  
Toll Free: 1-800-448-3835 • Phone: +1-315-393-4450 • Fax: +1-315-393-8471  
Email: techsale@defelsko.com • Web: www.defelsko.com



# PosiTector® **DPM** Dew Point Meter

Ideal for Use  
Outdoors & Indoors



PosiTector®  
B2 n3  
%RH 73.5 ↓  
Ta 26.5  
Ts 29.9 ↑  
Td 21.4  
Ts-Td 8.5 ↑  
°C

Measures and records climatic conditions including:

Relative humidity, air temperature, surface temperature, dew point temperature and difference between surface and dew point temperatures. Ideal for surface preparation as required by ISO 8502-4.



Standard model  
shown with separate probe

Advanced model  
shown with  
built-in probe

**DeFelsko®**

The Measure of Quality

# PosiTector® Dew Point Meter

## A New Level of Confidence for painting contractors & inspectors.

### Simple

- Enhanced one-handed menu navigation
- No need to consult complex tables or use a slide rule calculator
- Audio and visual alarm – indicates when climate conditions are unsuitable for painting
- All readings are constantly updated and displayed simultaneously
- RESET feature instantly restores factory settings

### Durable

- Rugged, outdoor/indoor instrument
- Solvent, acid, oil, water and dust resistant – weatherproof
- Shock-absorbing, protective rubber holster with belt clip
- Two year warranty on body and probe

### Accurate

- Fast response precision sensors provide accurate, repeatable readings with high reliability and long term stability
- Smart Trend™ indicators identify rising, falling or stable readings
- Certificate of Calibration showing traceability to NIST included
- Conforms to national and international standards including ISO and ASTM

### Versatile

- Internal Memory stores datasets with the simple touch of a button
- Auto Log Mode automatically records 5 parameters at user selected time intervals. Ideal for unattended operation.
- Every stored reading is date and time stamped
- Field calibratable
- Celsius/Fahrenheit switchable
- Selectable display languages
- Hi Contrast backlit display for bright or dark environments
- Flip display enables right-side-up viewing
- Uses alkaline or rechargeable batteries (built-in charger)

### Powerful

- Universal body accepts all PosiTector DPM, 6000, and SPG probes
- Hold function freezes the display allowing readings to be manually recorded
- USB port for fast, simple connection to a PC and to supply continuous power. USB cable included
- USB mass storage – stored readings and graphs can be accessed using universal PC/Mac web browsers or file explorers. No software required
- Software updates via web keep your instrument current
- Connects to PosiTector.net (see far right panel)

D A T A S E T	
MEASURES	CALCULATES
RH – relative humidity	T <sub>d</sub> – dew point temperature
T <sub>a</sub> – air temperature	T <sub>s</sub> -T <sub>d</sub> – the difference between surface and dew point temperatures
T <sub>s</sub> – surface temperature	

## Gage Selection...

### Select Standard or Advanced Features

#### Standard Models

#### Includes ALL features as shown on left plus...

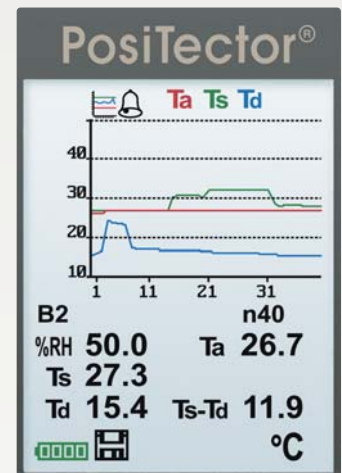
- Monochrome display
- Storage of 2,500 datasets (RH, Ta, Ts, Td, Ts-Td). Stored readings can be viewed or downloaded
- Auto Log Mode automatically records all 5 parameters at user selected time intervals. Runs unattended on batteries for up to 50 hours or continuously via USB

#### Advanced Models

#### Includes ALL features as shown on left plus...

- Hi Contrast reversible color LCD
- Storage of 20,000 datasets (RH, Ta, Ts, Td, Ts-Td) in up to 1,000 batches and sub-batches. Stored readings can be viewed or downloaded
- Auto Log Mode automatically records all 5 parameters at user selected time intervals. Data can be streamed via USB or Bluetooth® at each interval. Runs unattended on batteries for up to 8 months or continuously via USB
- On screen help, real time graphing, picture prompting, and batch notes
- Data transfer via USB to a PC or via Bluetooth® Wireless Technology to a PC or printer
- User defined limits for all parameters with visible and audible warnings
- Wet Bulb temperature can be displayed
- Trend Charts graph readings in real-time

Advanced model display shown in Memory Mode with real-time graphing



### Select from 2 Probe Styles

#### Built-in Probe

- Includes built-in surface temperature sensor

#### Separate Probe

- Includes magnetic surface temperature sensor with armored cable. Ideal for unattended auto logging during work shift or at night
- Includes magnetic mount for rubber holster to attach the instrument onto steel structures
- Accepts other optional K-type sensors



## Tough Features...

Sealed USB Port for communicating with a PC or Mac

Water and dust resistant – weatherproof

Hi resolution color LCD

Scratch/solvent/impact resistant lens

Advanced model shown in Memory and Alarm Modes

Universal body accepts all PosiTector DPM, 6000 and SPG probes

Solvent, acid, oil resistant, hi-grade, industrial strength housing

Multi-function navigation button

Shock-absorbing, protective rubber holster with belt clip and wrist strap

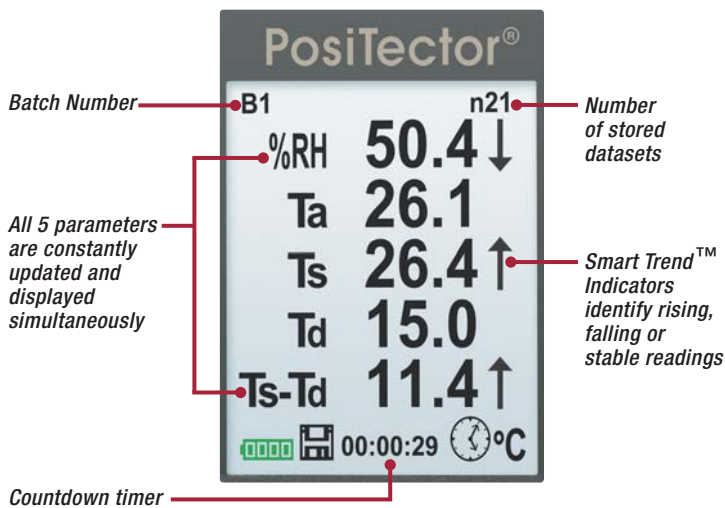
Air temperature and humidity sensor

White sensor housing reduces the effect of direct sunlight

Built-in thermocouple surface temperature sensor



### Example of Advanced model with Auto Log Display



## PosiTector.net by DeFelsko

Home

My Gages

What's New

My Account

where your gage meets the cloud™

PosiTector.net



**A free web-based application offering secure centralized management of measurement data**

- Synchronize measurement data when connected via USB—readings are uploaded to a secure server; images and batch notes are downloaded to your instrument
- Manipulate uploaded data using a standard internet web browser from any location in the world—jobsite or head office
- Generate reports and graphs with annotations and user selected images
- Share measurement data with authorized users via a secure login from any computer and most web enabled devices
- Export data to XML and text files
- Visit [www.defelsko.com/PosiTectorNET](http://www.defelsko.com/PosiTectorNET) for a demonstration

Flip Display enables right-side-up viewing in any position



Standard models shown

# Universal body accepts all PosiTector® DPM, 6000 and SPG probes



Analyze uploaded readings using a web browser from anywhere – jobsite or head office.

## Additional K-type Sensors for use with separate probe

- **Hand-held Surface Temperature Sensor** – for spot checking hard-to-reach surfaces
- **Self-adhering Surface Temperature Sensor** – sticks to solid materials including aluminum, wood, concrete, etc. Ideal for unattended monitoring
- **Liquid Temperature Sensor** – general purpose sensor with stainless steel shaft

## Accessories

**Bluetooth™ Printer** receives data from Advanced models

**Rechargeable Batteries** – a set of eneloop NIMH AAA batteries

**AC Power Kit** for continuous operation or battery charging –works in any country

**Protective Lens Shields** protect the display from overspray



Probe Style	Built-in	Separate	Specifications	Range	Accuracy	Resolution
<b>Ordering Guide</b>			<b>Surface Temperature</b>	-40° to 80° C	± 0.5° C	0.1° C
				80° to 190° C	± 1.5° C	
				-40° to 175° F	± 1° F	0.1° F
				175° to 375° F	± 3° F	
<b>Standard</b>	DPM1	DPMS1	<b>Air Temperature</b>	-40° to 80° C	± 0.5° C	0.1° C
				-40° to 175° F	± 1° F	0.1° F
<b>Advanced</b>	DPM3	DPMS3	<b>Humidity</b>	0 to 100%	± 3%	0.1%

**All Instruments Come Complete** with humidity, air and surface temperature sensors, protective rubber holster with belt clip, wrist strap, 3 AAA alkaline batteries, instructions, nylon carrying case with shoulder strap (Built-in probe models), hard shell carrying case (Separate probe models), protective lens shield, Long Form Certificate of Calibration traceable to NIST, USB cable, two (2) year warranty.

**Size:** 159 x 61 x 31 mm (6.25 x 2.4 x 1.2 in.)

**Weight:** 150 g (5.3 oz.) without batteries

Conforms to ISO 8502-4, BS 7079-B4, ASTM D3276 and US Navy NSI 009-32, IMO PSPC, SSPC-PA7 and others



# PosiTector® **UTG**

*Ultrasonic Thickness Gage*



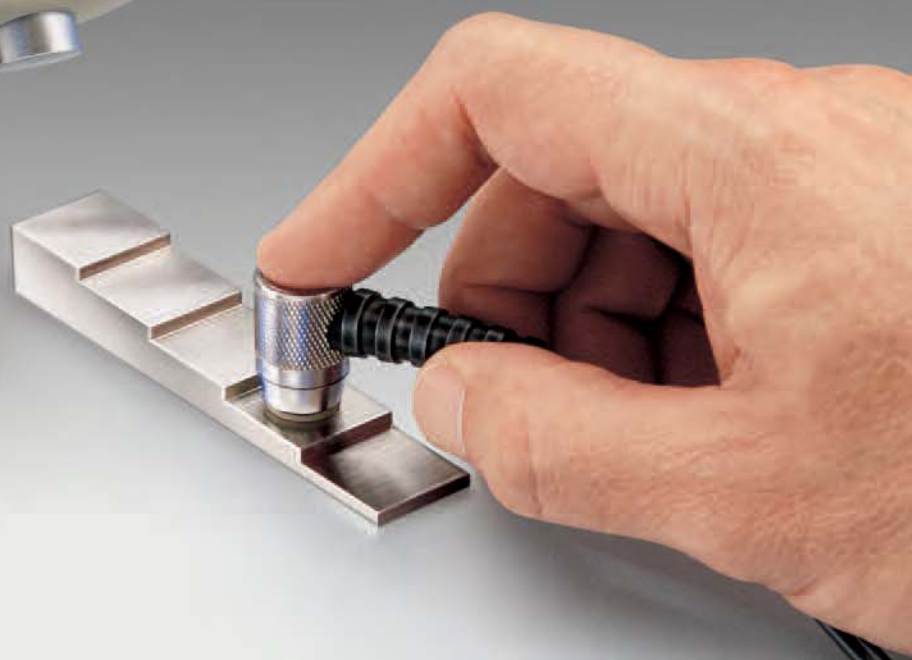
**Measures the wall thickness of materials such as steel, plastic and more**



## **New** **UTG ME**

*Thru-Paint model*

*measures the metal thickness of a painted structure without having to remove the coating.*



**DeFelsko®**

*The Measure of Quality*

# PosiTector® Ultrasonic Thickness Gages

## All Gages Feature...

### Simple

- Large, easy-to-read, graphics LCD with multilingual support
- One-handed menu navigation
- Pre-programmed velocities – simply select from a list of common materials or enter your own with ease
- Bi-color indicator light – ideal in a noisy environment
- RESET feature instantly restores factory settings

### Durable

- Solvent, acid, oil, water and dust resistant – meets or exceeds IP5X
- Scratch/Solvent resistant display suitable for harsh environments
- Shock-absorbing, protective rubber holster with belt clip
- Two (2) year warranty on both gage body and probe

### Accurate

- Precision transducers provide fast, accurate readings
- Certificate of Calibration showing traceability to NIST included with every gage
- Conforms to national and international standards including ASTM E797

### Versatile

- HiLo Alarm – dual-tone alarm and bi-color indicator light audibly and visibly alerts when measurements exceed operator selected limits
- Internal memory stores up to 10,000 readings in up to 1,000 batches
- Built-in Clock – date and time stamps each stored measurement
- USB and IR ports for downloading to a PC, printer or data collector
- Single or two point adjustment
- Inch/mm switchable
- Backlit display for dim or dark environments
- Selectable display languages



**Flip Display** enables right-side-up viewing whether the gage is in your hand, on your belt or on a work table

## Select from Two Models

**UTG Std model** measures the wall thickness of materials such as steel, plastic and more. Ideal for measuring the effects of corrosion or erosion on tanks, pipes or any structure where access is limited to one side.

- 5 MHz dual element transducer
- Scan Mode – measurement rate of 20 readings per second with on-screen min and max for quick inspection over a large area

### Example of Scan Mode Display (UTG Std only)



**UTG ME model** features Thru-Paint capability to quickly and accurately measure the metal thickness of a painted structure without having to remove the coating. The most accurate method to measure remaining wall thickness of a painted structure because it automatically disregards the coating, lowering inspection time and expense. Also ideal for measuring on sandblasted materials or other applications requiring a more durable wear face.

- 5 MHz contact probe with wear resistant Alumina probe tip
- **Multiple Echo** technique averages 3 or more echoes for accurate and reliable readings
- Toggle easily between
  - Multiple Echo** mode to eliminate coating thickness, and...
  - Single Echo** mode to detect pits and flaws, and to increase the measurement range
- Built-in temperature compensation ensures measurement accuracy



## Tough **NEW** Features

- USB/IR Ports for downloading to a PC or printer

- Solvent, acid, oil, water and dust resistant—meets or exceeds IP5X

- Scratch and solvent resistant lens

### UTG shown in Memory Mode

- Thick impact-resistant display

- Bi-color indicator light for HiLo Alarm

- Hi-grade, industrial strength housing

- Shock-absorbing, protective rubber holster

- Quality high-flex cable and strain relief

- Zero plate



## Choose the right model for your application



*UTG Std measures the remaining wall thickness of steel, and more due to the effects of corrosion and erosion.*



*UTG ME Thru-Paint model measures the metal thickness of a painted structure without having to remove the coating.*

### UTG Std Probe

- Stainless steel probe with knurled fingergrip

- Automatic V-Path compensation for thin materials

- 5 MHz dual element transducer



### UTG ME Probe

- User selectable Single Echo and Multiple Echo techniques

- Stainless steel probe with knurled fingergrip

- 5 MHz contact probe with wear resistant Alumina probe tip



Visit [www.defelsko.com/applications.htm](http://www.defelsko.com/applications.htm) to view **Inspection Application Notes**

## SPECIFICATIONS

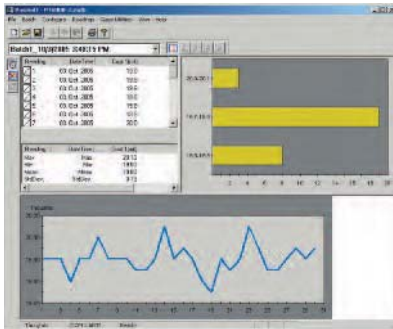
PosiTector UTG Model	<b>UTG Std</b>	<b>UTG ME</b>	
Probe Type	5 MHz dual element	5 MHz contact	
Mode	Single Echo	Single Echo	Multiple Echo
Measurement Range*	0.040" to 5.000" 1.00 to 125.00 mm	0.100 to 5.000" 2.50 to 125.00 mm	0.100 to 2.500" 2.50 to 60.00 mm
Thru-Paint Capability	no	no	yes
Measurement Rate – Normal	6 readings/sec	3 readings/sec	
Measurement Rate – Scan	20 readings/sec	n/a	
Resolution	0.001" / 0.01 mm	0.001" / 0.01 mm	
Accuracy	±0.001" / ±0.03 mm	±0.001" / ±0.03 mm	

\*Measurement range is for carbon steel and depends upon surface condition, temperature and material.

### Options

#### PosiSoft® for Windows® analysis software

- Allows entry of notes and annotations
- Prints and displays basic charts and histograms
- Exports to a document or spreadsheet
- Includes USB cable
- Free updates



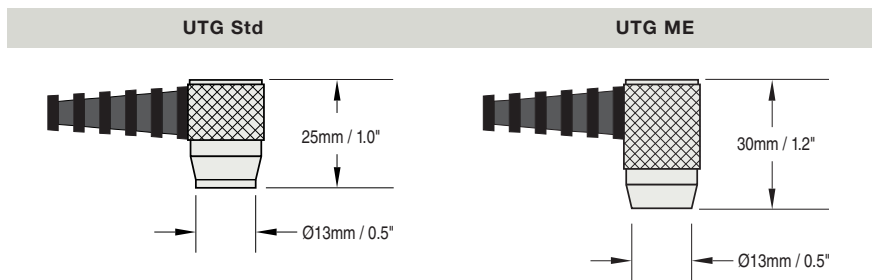
**Calibration Test Block** (shown on front) to fulfill both ISO and in-house quality control requirements.

**AC Power Cable** for continuous operation.

**IR Printer** receives data from all models via wireless infrared.



### Probe Details



**ALL GAGES COME COMPLETE** with probe, couplant, protective rubber holster with belt clip, 3 AAA batteries, instructions, nylon carrying case with shoulder strap, Certificate of Calibration traceable to NIST, two (2) year warranty.

**SIZE:** 146 x 64 x 31 mm (5.75" x 2.5" x 1.2")  
**WEIGHT:** 165 g (5.8 oz.) without batteries  
 Conforms to ASTM E797

# PosiTector<sup>®</sup> *SPG*

## Surface Profile Gage



Measures and records  
peak to valley  
surface profile height



**DeFelsko<sup>®</sup>**  
*The Measure of Quality*

# PosiTector® *Surface Profile Gage*

## All Gages Feature...

### Simple

- Fast measurement rate of over 50 readings per minute – ideal for quickly and accurately measuring large surface areas
- Enhanced one-handed menu navigation
- RESET feature instantly restores factory settings

### Durable

- Solvent, acid, oil, water and dust resistant – weatherproof
- 60° angle tungsten carbide tip for long life and continuous accuracy – field replaceable
- Rugged, outdoor/indoor instrument – ideal for field or shop use
- Shock-absorbing, protective rubber holster with belt clip
- Two year warranty on body and probe

### Accurate

- Built-in temperature compensation ensures measurement accuracy
- Certificate of Calibration showing traceability to NIST included
- Glass zero plate and metal shim included
- Conforms to national and international standards including ISO and ASTM

### Versatile

- Universal gage body accepts ALL PosiTector SPG, DPM and 6000 probes
- 30° angle interchangeable probe tip available for special applications
- Selectable display languages
- Hi Contrast backlit display for bright or dark environments
- Flip display enables right-side-up viewing
- Uses alkaline or rechargeable batteries (built-in charger)

### Powerful

- Continually displays/updates average, standard deviation, min/max thickness and number of readings
- HiLo alarm audibly and visibly alerts when measurements exceed user-specified limits
- Every stored measurement is date and time stamped
- USB port for fast, simple connection to a PC and to supply continuous power. USB cable included
- USB mass storage – stored readings and graphs can be accessed using universal PC/Mac web browsers or file explorers. No software required
- Software updates via web keep your gage current
- Connects to PosiTector.net

PosiTector SPG Ordering Guide	
Standard	SPG1
Advanced	SPG3
Range	0 – 500 µm (0 – 20 mils)
Accuracy	± (5 µm + 5%) ± (0.2 mil + 5%)

## Select Standard or Advanced Features

### Standard Model

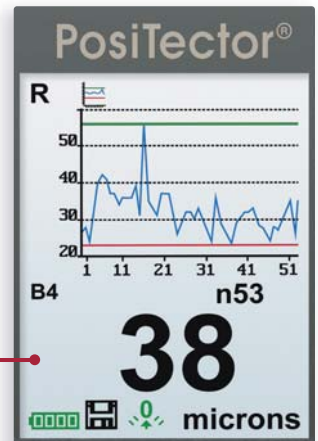
**Includes ALL features as shown on left plus...**

- Monochrome display
- Storage of 250 readings—stored readings can be viewed or downloaded

### Advanced Model

**Includes ALL features as shown on left plus...**

- Hi Contrast reversible color LCD
- Storage of 100,000 readings in up to 1,000 batches and sub-batches
- SmartBatch™ allows entry of user-defined parameters and criteria to comply with various standards and test methods
- On screen help, real time graphing, picture prompting and batch notes
- Data transfer via USB to a PC or via Bluetooth® Wireless Technology to a PC or printer



*Advanced model display shown in Memory Mode with real-time graphing*

## Accessories

- Replacement Tungsten Carbide Probe Tips – 2 angles available 60° or 30°, includes replacement tool
- Bluetooth® Printer receives data from Advanced Models
- AC Power Kit for continuous operation or battery charging – works in any country
- Rechargeable Batteries – a set of eneloop NiMH AAA batteries
- Protective Lens Shields protect the display from overspray

**All Gages Come Complete** with glass zero plate, metal shim, protective rubber holster with belt clip, wrist strap, 3 AAA alkaline batteries, instructions, nylon carrying case with shoulder strap, protective lens shield, Long Form Certificate of Calibration traceable to NIST, USB cable, two (2) year warranty.



**Size:**  
137 x 61 x 28 mm  
(5.4" x 2.4" x 1.1")

**Weight:** 140 g (4.9 oz.)  
without batteries

Conforms to ASTM D4417-B, AS 3894.5-C (with optional 30° tip angle), U.S. Navy NSI 009-32, SANS 5772 and others



# DeFelsko Coating Thickness Standards

Certified coating thickness standards are ideal for verifying the accuracy and operation of coating thickness gages and are an important component in fulfilling both ISO and in-house quality control requirements.

Many organizations require verification of gage accuracy at the test site each time a coating thickness gage is put into service and at frequent intervals during use. Ideal for this purpose, DeFelsko certified coating thickness standards have measured values traceable to a National Metrology Institution.

## Certified Coated Metal Plates and Polystyrene Blocks

- Used to verify the accuracy and operation of any Type 1 (mechanical) and Type 2 (electronic) magnetic, eddy-current or ultrasonic coating thickness gage
- Ideal for use in the calibration lab, in the field or on the factory floor
- Standards with steel or aluminum substrates consist of 4 plates mounted in a protective binder
- Polystyrene thickness standards consist of 4 blocks supplied in a rugged acrylic storage box
- Individually serialized for traceability to NIST or PTB - includes a Certificate of Calibration
- Certified and labeled in both Metric and Imperial units



S1 Ferrous



A1 Non-Ferrous



Individual plates are available

P1 Polystyrene



**Plate Diameter:** 38 mm (1.5")  
**Measurement Diameter:** 25 mm (1")

**Polystyrene Blocks:** 38 x 70 mm (1.5" x 2.75")

Order Code	Ideal for	Approximate Thickness				Coating/ Substrate	Accuracy
		Plate 1	Plate 2	Plate 3	Plate 4		
S1	PosiTector 6000 F, FS, FRS, FN, FNS, FNRS PosiTest F & FM	0	75 µm 3 mils	250 µm 10 mils	1500 µm 60 mils	Epoxy on Steel (Ferrous)	+/- 0.43 µm +/- 0.017 mil
S2	PosiTector 6000 F0S, F45S, F90S PosiTest DFT Ferrous & Combo	0	75 µm 3 mils	250 µm 10 mils	1000 µm 40 mils		
S3	PosiTest G & GM PosiPen A, B & C	0	15 µm 0.6 mils	40 µm 1.6 mils	100 µm 4 mils		
A1	PosiTector 6000 N, NS, NRS, FN, FNS, FNRS	0	75 µm 3 mils	250 µm 10 mils	1500 µm 60 mils	Epoxy on Aluminum (Non-Ferrous)	+/- 0.43 µm +/- 0.017 mil
A2	PosiTector 6000 NAS, N0S, N45S, N90S PosiTest DFT Combo	0	75 µm 3 mils	250 µm 10 mils	500 µm 20 mils		
A3	PosiTector 100B, 200, 200B	75 µm 3 mils	125 µm 5 mils	250 µm 10 mils	500 µm 20 mils		
P1	PosiTector 6000 FT, FTS, NTS, FNFS	375 µm 15 mils	2 mm 80 mils	4.5 mm 185 mils	6.5 mm 250 mils	Polystyrene Blocks	+/- (2.5 µm + 0.05% of thickness) +/- (0.1 mil + 0.05% of thickness)
P2	PosiTector 6000 FHS, NHS, EOC	2.5 mm 100 mils	6.5 mm 250 mils	13 mm 500 mils	19 mm 750 mils		
P3	PosiTector 100C	375 µm 15 mils	1.5 mm 60 mils	2.5 mm 100 mils	4.5 mm 185 mils		
P4	PosiTector 100D	1.5 mm 60 mils	2.5 mm 100 mils	4.5 mm 185 mils	6.5 mm 250 mils		
P5	PosiTector 6000 FKS, NKS	1.5 mm 60 mils	2.5 mm 100 mils	6.5 mm 250 mils	12 mm 480 mils		
P6	PosiTector 200C	375 µm 15 mils	1.5 mm 60 mils	2.5 mm 100 mils	3 mm 125 mils		

Select the Standard that most closely matches the measuring range of your gage.

All certified standards are supplied with a Certificate of Calibration traceable to NIST or PTB.



# DeFelsko Plastic Shims

- Simulate a coating over a particular substrate material or shape. Gage performance can be conveniently verified on a regular basis as required by some international test methods
- For use with all Type 2, electronic coating thickness gages
- Protects the probe from damage or premature wear when placed over hot or abrasive surfaces
- Can be placed on top of soft or tacky coating films to obtain thickness measurements without the gage probe depressing the coating film

## Certified Plastic Shims

- Certified shims provide an economical alternative to Coated Metal Plates but have a reduced accuracy
- Each shim is packaged in its own protective plastic pouch
- Certificate of Calibration showing traceability to NIST is included with each shim or set of shims
- Certified and labeled in both Metric and Imperial units



Certified Plastic Shims

## Non-Certified Plastic Shims

- Provide a quick operational check of the instrument by allowing the user to perform practice measurements
- Can be used to protect the probe when measuring on tacky, rough or hot surfaces
- Labeled in both Metric and Imperial units
- Available as a set of 5 (below)

Approximate Thickness	Color	Accuracy
25 $\mu\text{m}$ (1 mil)	Orange	+/- 20%
50 $\mu\text{m}$ (2 mils)	Red	+/- 10%
125 $\mu\text{m}$ (5 mils)	Blue	+/- 5%
250 $\mu\text{m}$ (10 mils)	Brown	+/- 5%
500 $\mu\text{m}$ (20 mils)	Yellow	+/- 5%



Steel and aluminum zero plates are available

Order Code	Approximate Thickness	Color	Accuracy
CS1	25 $\mu\text{m}$ (1 mil)	Orange	+/- 2 $\mu\text{m}$ (+/- 0.08 mils)
CS2	50 $\mu\text{m}$ (2 mils)	Red	
CS3	75 $\mu\text{m}$ (3 mils)	Green	
CS5	125 $\mu\text{m}$ (5 mils)	Blue	
CS10	250 $\mu\text{m}$ (10 mils)	Brown	
CS20	500 $\mu\text{m}$ (20 mils)	Yellow	
CS40	1000 $\mu\text{m}$ (40 mils)	White	
CS60	1500 $\mu\text{m}$ (60 mils)	Black	
CSS	Complete set of 8		



Non-Certified Plastic Shims

A package of 5 non-certified shims is included with all DeFelsko electronic coating thickness gages (Type 2).

Note: Shims are generally not acceptable for use with Type 1, magnetic pull-off gages such as the PosiTest FM/GM and PosiPen.

**DeFelsko Corporation**, a U.S. manufacturer of coating thickness gages and inspection instruments, has been providing **Simple, Durable and Accurate** gages since 1966.

Our state-of-the-art facility in Ogdensburg, New York houses research, manufacturing, sales, service, and shipping departments. Every gage is inspected under our strict quality guidelines.

In addition to high product quality we are proud to offer the **DeFelsko Advantage:**

## Technical Support

Our highly trained technical support team is dedicated to solving problems quickly. Call or email our technical department for all questions including order status, sales, technical, quality & calibration, accounting, shipping or general information.

## Fast Service

Our service department's goal is to evaluate your gage and contact you within one (1) day of our receiving the gage in for service or calibration.

## On-Site Manufacturing

All parts are available on-site which gives us the ability to repair gages quickly and ship most gages within one day anywhere in the world.



## DeFelsko®

### Contact Information

Tel: 1-800-448-3835 +1-315-393-4450

Fax: +1-315-393-8471

Email: [techsale@defelsko.com](mailto:techsale@defelsko.com)

Web: [www.defelsko.com](http://www.defelsko.com)

### DeFelsko Corporation

802 Proctor Avenue

Ogdensburg, New York 13669 USA



© DeFelsko Corporation USA 2011. Technical Data subject to change without notice. v:DCat.w/w0911

