

# Air Distribution and Venting Products Catalog



Proudly serving the industry since 1960





## TERMS & CONDITIONS

- **PRICING:** Prices are subject to change without notice. All quotes, unless otherwise specified, are binding for immediate acceptance only.
- **HOW TO ORDER:** By letterhead, purchase order, 24-hr fax or EDI.
- **MINIMUM ORDER:** \$100 to one location. A charge of \$25 will apply to all orders under \$100.
- **FULL CASE QUANTITIES:** All items will be adjusted to the next even case packs unless otherwise specified. Broken lot quantities are available, but will be subject to a 20% surcharge.
- **TERMS OF SALE:** Payable in 30 days Net from day of shipment.
- **OPEN CREDIT:** A completed Deflecto Credit Application must be furnished for consideration and approval for open credit.
- **SHORTAGES IN SHIPMENT:** Claims for shortages or errors in shipments must be reported to Deflecto Customer Service within 30 days of receipt of order. A signed copy of the carrier's bill of lading and/or delivery receipt must be supplied. Deflecto assumes no responsibility for unsigned claims or claims made after 30 days.
- **DAMAGES IN SHIPMENT:** Claims for damages must be reported to Deflecto Customer Service within 48 hours of receipt of order. A signed copy of the carrier's bill of lading and/or delivery receipt must be supplied. Deflecto assumes no responsibility for unsigned claims or claims made after 30 days.
- **RETURNS:** No returns will be accepted without prior authorization (RGA#) from Deflecto Customer Service. Any merchandise authorized for return will be subject to a 25% restocking charge. All freight charges will be the responsibility of the returning party. Returned merchandise must be in a clean, re-saleable condition. Only merchandise verifiable by a Deflecto invoice number will be considered for return.
- **CUSTOM ITEMS:** Custom-ordered product is non-returnable, and any custom work in progress will be billed in full if cancelled.
- **METAL RACKS:** All metal rack parts are billed at time of shipment, and are invoiced on a separate account and are payable as due. Full credit will be issued upon return of empty racks to Deflecto. To arrange return of empty racks, contact Deflecto Customer Service.
- **WARRANTY:** It is Deflecto policy to produce a quality product. In the event a product is defective, we will warrant it 100% against defects in material and workmanship. Deflecto Canada products are generally incorporated into other systems and assemblies. We do not warrant any cost beyond Deflecto Canada Ltd. products.



<b><u>PRODUCT</u></b>	<b><u>PAGE</u></b>
A-Collars & Connectors.....	6
Air Deflectors.....	27
All Metal Dryer Venting & Accessories.....	31-34
Aluminum Flexible Duct.....	22-23,23b,31
Aluminum Elbows.....	18, 26
Aluminum Liner Kits & Accessories.....	19,20
Aluminum Pipe.....	18,31,38
Aluminum Repair Rolls.....	18
Aluminum Roof Vents.....	36
Aluminum Vent Hoods.....	31,36
Aluminum Wall Caps.....	32,36
Angle Boots.....	7
Bathroom Venting & Accessories.....	34-35
Black Pipe & Fittings.....	17
Boots.....	7, 8
B-Vent Connectors.....	20
Caps (non-crimped).....	4
Ceiling Boots.....	8
Ceiling Boxes.....	8
Chimney Sleeves - Galvanized.....	32
Clamps.....	26
Cleats.....	10
Dampers.....	4
Diffusers.....	27,34,37
Drop Kits.....	14
Dryer Vent Kits.....	29-32
Dryer Venting Accessories.....	33
Duct Couplers – Plastic.....	26
Duct Connectors – Aluminum.....	26
Duct – End Caps.....	13
Duct – Insulated Flexible.....	24-25
Duct – Non-Insulated Flexible.....	21-23,23b
Duct – Rectangular.....	13
Duct Reducers.....	14
Duct Strap.....	10
<b>ELBOWS</b>	
Aluminum.....	18,26
Galvanized.....	3
Oval.....	16
Longway, Shortway, Rectangular.....	15,36
Return Air.....	14
End Boots.....	7
Flexible Ducting – Non-Insulated.....	21-23
Rectangular (Duct Ends).....	13
Fresh Air Intake Hoods.....	38-39
General Venting.....	34
Grills.....	28
Increasesers.....	9
Increaser/Reducer-Plastic & Aluminum...	26
Insulated Sleeves.....	25
Joist Lining.....	10

<b><u>PRODUCT</u></b>	<b><u>PAGE</u></b>
Kitchen Venting.....	36-37
Lint Trap Kit.....	30
Magnetic Vent Covers.....	27
Oval Pipe & Fittings.....	16
Perimeter Pipe.....	1
Plastic Registers.....	27
Plastic Vent Hoods.....	29-30
Pipe – Oval.....	16
Plenum Takeoffs.....	12
Plenums.....	14
Plugs (crimped).....	4
Raincaps – Aluminum.....	20
Raincaps - Galvanized.....	33
Rectangular Duct.....	13
Reducers.....	9
Reducers (Duct) – Rectangular.....	14
Register Accessories.....	27
Register Boxes.....	8
Registers – Plastic.....	27
Registers – Metal.....	28
Repair Rolls - Aluminum.....	18
Return Air Elbows.....	14
Return Air Frame.....	10
Roof Caps/Vents – Aluminum.....	36
<b>ROUND PIPE</b>	
Aluminum.....	18,31,38
Galvanized.....	1, 2
Saddle Wyes.....	10
Silver Insulated Duct.....	24-25
Smoke Pipe.....	2
Specialty Vent Hoods.....	38,39
Spin-Ons.....	5
Stack Duct.....	13
Stackheads (Oval).....	16
Straight Takeoffs.....	12
Strapping - Galvanized.....	10
Supurr-Flex® .....	21
Suspended Ceiling Venting.....	22,34,37
Takeoffs.....	5
Tees.....	11
<b>Terms and Conditions</b> .....	51
Universal Boots.....	8
Vent Hoods – Galvanized.....	33
Vent Hoods – Plastic.....	29-30
Vertical Draft Diverters.....	4
Vinyl Hose.....	23
Window plate.....	34
Wallcaps.....	32,36
Wall Stack.....	13
Wyes.....	12

**Index by Model Number Pages 40-50**

# ROUND PIPE - 4', 5', 10' lengths Galvanized - (Perimeter Pipe)

## 30 Gauge Standard(STD)

Dia	Model No.	Length	Lock Style	Rack QTY	Bdle	Pce Wt. Lbs	UPC Code	Bar Code
3"	PP03530BSTD	5 FT	B	600	10	1.85	079916900001	use UPC
	PP031030BSTD	10 FT	B	300	5	3.17	079916900018	use UPC
4"	PP04530ASTD*	5 FT	A	400	10	2.44	079916900025	use UPC
	PP04530BSTD	5 FT	B	460	10	2.38	079916900032	use UPC
	PP041030BSTD	10 FT	B	230	10	4.76	079916900049	use UPC
5"	PP05530ASTD*	5 FT	A	420	10	2.97	079916900056	use UPC
	PP05530BSTD	5 FT	B	420	10	2.91	079916900063	use UPC
	PP051030BSTD	10 FT	B	210	10	5.81	079916900070	use UPC
6"	PP06530ASTD*	5 FT	A	330	10	3.49	079916900087	use UPC
	PP06530BSTD	5 FT	B	330	10	3.43	079916900094	use UPC
	PP061030BSTD	10 FT	B	150	10	6.86	079916900100	use UPC
7"	PP07530BSTD	5 FT	B	230	10	3.96	079916900117	use UPC
	PP071030BSTD	10 FT	B	110	5	7.93	079916932569	use UPC
8"	PP08530BSTD	5 FT	B	100	10	4.49	079916900131	use UPC

## 30 Gauge

Dia	Model No.	Length	Lock Style	Rack QTY	Bdle	Pce Wt. Lbs	UPC Code	Bar Code
3"	PP03530B	5 FT	B	600	10	2.31	079916931074	use UPC
4"	PP04530B	5 FT	B	460	10	2.86	079916900148	use UPC
4"	PP041030B	10 FT	B	200	5	5.72	079916930367	use UPC
5"	PP05530B	5 FT	B	420	10	3.61	079916900155	use UPC
5"	PP051030B	10 FT	B	210	10	7.22	079916003597	use UPC
6"	PP06530B	5 FT	B	300	10	4.21	079916900162	use UPC
6"	PP061030B	10 FT	B	165	10	8.41	079916930589	use UPC
7"	PP07530B	5 FT	B	230	10	4.86	079916900179	use UPC
8"	PP08530B	5 FT	B	100	5	5.51	079916900186	use UPC
10"	PP10530B	5 FT	B	70	5	6.88	079916900193	use UPC

## 28 Gauge

Dia	Model No.	Length	Lock Style	Rack QTY	Bdle	Pce Wt. Lbs	UPC Code	Bar Code
4"	PP04528B	5 FT	B	460	10	4.06	079916930930	use UPC
5"	PP05528B	5 FT	B	210	5	4.96	079916930640	use UPC
6"	PP06528B	5 FT	B	165	5	5.85	079916930565	use UPC
7"	PP07528B	5 FT	B	115	5	6.76	079916900216	use UPC
8"	PP08528B	5 FT	B	100	5	7.66	079916900223	use UPC
10"	PP10528B	5 FT	B	70	5	9.45	079916930121	use UPC
12"	PP12428B	4 FT	B	60	5	9.00	079916930473	use UPC
12"	PP12528B	5 FT	B	60	5	11.25	079916003610	use UPC
14"	PP14428B	4 FT	B	35	5	10.44	079916003634	use UPC

## 26 Gauge

Dia	Model No.	Length	Lock Style	Rack QTY	Bdle	Pce Wt. Lbs	UPC Code	Bar Code
5"	PP05526B	5 FT	B	210	5	6.09	079916930541	use UPC
6"	PP06526B	5 FT	B	165	5	7.19	079916930558	use UPC
7"	PP07526B	5 FT	B	115	5	8.62	079916900230	use UPC
8"	PP08526B	5 FT	B	100	5	9.41	079916900247	use UPC
10"	PP10526B	5 FT	B	70	5	11.60	079916930442	use UPC
12"	PP12426B	4 FT	B	60	5	11.06	079916931203	use UPC
12"	PP12526B	5 FT	B	50	5	13.82	079916003603	use UPC
14"	PP14426B	4 FT	B	50	5	12.82	079916003627	use UPC

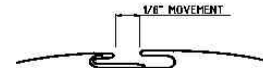
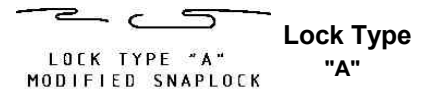


The ending of the Model Number designates the lock type.

\*Available in No-Bead (PPNB)

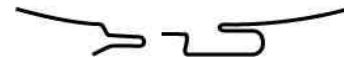
\*Offered in 'A' STD in 4,5,6" diameters ONLY

### LOCK TYPES



Lock Type "A" is a unique modified version of the Reeves lock that also fits together easily, AND provides a 1/8" movement when locked. This movement allows for easier pipe connections for the installer.

### Lock Type "B" MODIFIED REEVES SNAPLOCK



Lock Type 'B' is the reliable industry standard that fits together easily, and locks tight without any movement.

### Lock Type "C" BUTTON LOCK

Lock Type 'C' is a fast-snapping button lock. Lock 'C' is available upon request in beaded & no-bead styles.

**BOXED PIPE AVAILABLE UPON REQUEST (PPX)  
OFFERED FOR 'B' STD & 30 Gauge ONLY**



**PPNB  
No Bead**



**PPX  
Boxed**

## ROUND PIPE - 30", 36" lengths - Galvanized (Smoke Pipe) - 'B' Lock

### Warm Air

Dia	Model No.	Length	Bdle	Pc Wt. Lbs	UPC Code	Bar Code
3"	GSP033032	30"	10	0.92	079916900605	use UPC
	GSP033632	36"	10	1.11	079916900612	use UPC
4"	GSP043032	30"	10	1.19	079916900629	use UPC
	GSP043632	36"	10	1.43	079916900636	use UPC
5"	GSP053032	30"	10	1.45	079916900643	use UPC
	GSP053632	36"	10	1.74	079916900650	use UPC
6"	GSP063032	30"	10	1.71	079916900667	use UPC
	GSP063632	36"	10	2.05	079916900858	use UPC

### 28 Gauge

Dia	Model No.	Length	Bdle	Pc Wt. Lbs	UPC Code	Bar Code
3"	GSP033028	30"	10	1.58	079916900681	use UPC
	GSP033628	36"	10	1.9	079916900698	use UPC
4"	GSP043028	30"	10	2.03	079916900704	use UPC
	GSP043628	36"	10	2.43	079916900711	use UPC
5"	GSP053028	30"	10	2.47	079916900728	use UPC
	GSP053628	36"	10	2.97	079916900735	use UPC
6"	GSP063028	30"	10	2.92	079916900742	use UPC
	GSP063628	36"	10	3.51	079916900759	use UPC
7"	GSP073028	30"	10	3.38	079916900766	use UPC
	GSP073628	36"	10	4.06	079916900773	use UPC
8"	GSP083028	30"	10	3.83	079916900780	use UPC
	GSP083628	36"	10	4.59	079916900797	use UPC
9"	GSP093028	30"	10	4.27	079916900803	use UPC
	GSP093628	36"	10	5.13	079916900810	use UPC
10"	GSP103028	30"	10	4.72	079916900827	use UPC
	GSP103628	36"	10	5.66	079916900834	use UPC
12"	GSP123028	30"	5	5.62	079916900841	use UPC
	GSP123628	36"	5	6.75	079916900858	use UPC



GSP

### 26 Gauge

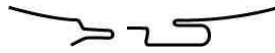
Dia	Model No.	Length	Bdle	Pc Wt. Lbs	UPC Code	Bar Code
4"	GSP043026	30"	5	2.49	079916900865	use UPC
	GSP043626	36"	5	2.99	079916900872	use UPC
5"	GSP053026	30"	5	3.04	079916900889	use UPC
	GSP053626	36"	5	3.65	079916900896	use UPC
6"	GSP063026	30"	5	3.59	079916900902	use UPC
	GSP063626	36"	5	4.31	079916900919	use UPC
7"	GSP073026	30"	5	4.15	079916900926	use UPC
	GSP073626	36"	5	4.98	079916900933	use UPC
8"	GSP083026	30"	5	4.7	079916900940	use UPC
	GSP083626	36"	5	5.64	079916900957	use UPC
9"	GSP093026	30"	5	5.25	079916900964	use UPC
	GSP093626	36"	5	6.3	079916900971	use UPC
10"	GSP103026	30"	5	5.8	079916900988	use UPC
	GSP103626	36"	5	6.96	079916900995	use UPC
12"	GSP123026	30"	5	6.91	079916901008	use UPC
	GSP123626	36"	5	8.29	079916901015	use UPC
14"	GSP143026	30"	5	8.01	079916901022	use UPC
	GSP143626	36"	5	9.61	079916901039	use UPC

### 24 Gauge

Dia	Model No.	Length	Bdle	Pc Wt. Lbs	UPC Code	Bar Code
5"	GSP053624	36"	5	4.3	079916931142	use UPC
	GSP063624	36"	5	5.07	079916901046	use UPC
7"	GSP073624	36"	5	5.86	079916901053	use UPC
	GSP083624	36"	5	6.64	079916901060	use UPC
9"	GSP093624	36"	5	7.42	079916901077	use UPC
	GSP103624	36"	5	8.19	079916901084	use UPC
12"	GSP123624	36"	5	9.76	079916901091	use UPC
	GSP143624	36"	5	11.31	079916901107	use UPC
16"	GSP163624	36"	5	12.98	079916901114	use UPC



Lock Type "B"



### The Deflect-o® Advantage

Deflect-o has pipe to meet your needs,  
and gauges to get the job done.

## ROUND PIPE - 24" Length - Strapped - 'B' Lock

### 30 Gauge

Dia	Model No.	Length	Bdle	Pc Wt. Lbs	UPC Code	Bar Code
3"	GSPS032430	24"	10	0.97	079916000138	use UPC
	GSPS042430	24"	10	1.25	079916901152	use UPC
5"	GSPS052430	24"	10	1.52	079916930008	use UPC
	GSPS062430	24"	10	1.8	079916000244	use UPC
7"	GSPS072430	24"	10	2.08	079916002590	use UPC
	GSPS082430	24"	10	2.36	079916002637	use UPC
10"	GSPS102430	24"	10	2.91	079916002675	use UPC



GSPS

### 26 Gauge

Dia	Model No.	Length	Bdle	Pc Wt. Lbs	UPC Code	Bar Code
4"	GSPS042426	24"	10	1.99	079916000145	use UPC
	GSPS052426	24"	10	2.43	079916000190	use UPC
6"	GSPS062426	24"	10	2.87	079916000220	use UPC
	GSPS072426	24"	10	3.32	079916002576	use UPC
8"	GSPS082426	24"	10	3.76	079916002613	use UPC
	GSPS102426	24"	10	4.64	079916002651	use UPC

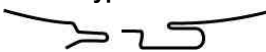
### 28 Gauge

Dia	Model No.	Length	Bdle	Pc Wt. Lbs	UPC Code	Bar Code
3"	GSPS032428	24"	10	1.26	079916000121	use UPC
	GSPS042428	24"	10	1.62	079916000183	use UPC
5"	GSPS052428	24"	10	1.98	079916000206	use UPC
	GSPS062428	24"	10	2.34	079916000237	use UPC
7"	GSPS072428	24"	10	2.7	079916002583	use UPC
	GSPS082428	24"	10	3.06	079916002620	use UPC
10"	GSPS102428	24"	10	3.77	079916002668	use UPC

### 24 Gauge

Dia	Model No.	Length	Bdle	Pc Wt. Lbs	UPC Code	Bar Code
6"	GSPS062424	24"	10	3.38	079916000213	use UPC
	GSPS072424	24"	10	3.91	079916002569	use UPC
8"	GSPS082424	24"	10	4.43	079916002606	use UPC
	GSPS102424	24"	10	5.46	079916002644	use UPC

Lock Type "B"



**ELBOWS - 90 Degree**  
**Adjustable - Galvanized**

**30 Gauge - 90 Degree ( Strapped)**

Dia	Model No.	Bdle	Cs Cb.	Pc Wt. Lbs	UPC Code	Bar Code
3"	ELBS039030	12	0.7	0.3	079916403151	use UPC
4"	ELBS049030	24	2	0.4	079916826011	use UPC
5"	ELBS059030*	24	3.4	0.56	079916636818	use UPC
6"	ELBS069030*	20	2.8	0.66	079916630236	use UPC
7"	ELBS079030	12	4.1	0.94	07991600015	use UPC
8"	ELBS089030	12	6.1	1.11	079916926131	use UPC
10"	ELB109030	4	3.8	1.61	079916632827	use UPC
12"	ELB129030	1	6.5	2.55	079916008486	use UPC



ELB

**ELBOWS - 45 Degree**  
**Adjustable - Galvanized**

**30 Gauge - 45 Degree ( Strapped)**

Dia	Model No.	Bdle	Cs Cb.	Pc Wt. Lbs	UPC Code	Bar Code
4"	ELB044530	24	1.8	0.27	079916902166	use UPC
5"	ELB054530	24	2	0.39	079916902173	use UPC
6"	ELB064530	24	4.1	0.48	079916902180	use UPC



ELB

\*5" ELBOWS - 432/SKID  
\*6" ELBOWS - 360/SKID



STRAPPED

**28 Gauge - 45 Degree ( Strapped)**

Dia	Model No.	Bdle	Cs Cb.	Pc Wt. Lbs	UPC Code	Bar Code
4"	ELB044528	24	1.8	0.39	079916018096	use UPC
5"	ELB054528	24	2	0.55	079916615714	use UPC
6"	ELB064528	24	4.1	0.69	079916616711	use UPC
7"	ELB074528	24	5.4	0.84	079916621814	use UPC
8"	ELB084528	24	8	1.06	079916621821	use UPC

**28 Gauge - 90 Degree ( Strapped)**

Dia	Model No.	Bdle	Cs Cb.	Pc Wt. Lbs	UPC Code	Bar Code
3"	ELBS039028	12	0.7	0.42	079916902159	use UPC
4"	ELBS049028	12	1	0.56	079916403410	use UPC
5"	ELBS059028	12	2.1	0.77	079916826035	use UPC
6"	ELBS069028	12	2.8	0.94	079916630229	use UPC
7"	ELBS079028	12	4.1	1.29	079916901909	use UPC
8"	ELBS089028	12	6.1	1.58	079916000039	use UPC
9"	ELB099028	4	6.5	1.89	079916901923	use UPC
10"	ELB109028	4	3.8	2.21	079916901930	use UPC
12"	ELB129028	1	7.1	3.09	079916932989	use UPC



ELB

**26 Gauge - 45 Degree ( Strapped)**

Dia	Model No.	Bdle	Cs Cb.	Pc Wt. Lbs	UPC Code	Bar Code
4"	ELB044526	24	1.8	0.47	079916902197	use UPC
5"	ELB054526	24	2.1	0.68	079916902203	use UPC
6"	ELB064526	24	4.2	0.84	079916902210	use UPC
7"	ELB074526	24	5.3	1.04	079916902227	use UPC
8"	ELB084526	24	8	1.31	079916902234	use UPC
10"	ELB104526	8	8	1.82	079916632810	use UPC
12"	ELB124526	1	8	2.39	079916008448	use UPC



ELB

**26 Gauge - 90 Degree ( Strapped)**

Dia	Model No.	Bdle	Cs Cb.	Pc Wt. Lbs	UPC Code	Bar Code
3"	ELBS039026	12	0.7	0.52	079916902142	use UPC
4"	ELBS049026	12	1.1	0.68	079916403281	use UPC
5"	ELBS059026	12	2.1	0.95	079916826028	use UPC
6"	ELBS069026	12	2.8	1.16	079916636825	use UPC
7"	ELBS079026	12	4.1	1.58	079916643816	use UPC
8"	ELBS089026	12	6.1	1.94	079916000022	use UPC
9"	ELB099026	4	6.1	2.23	079916901992	use UPC
10"	ELB109026	4	3.8	2.72	079916902005	use UPC
12"	ELB129026	1	7.1	3.8	079916902012	use UPC
14"	ELB149026	1	9.8	4.69	079916902029	use UPC

**24 Gauge - 45 Degree ( Strapped)**

Dia	Model No.	Bdle	Cs Cb.	Pc Wt. Lbs	UPC Code	Bar Code
5"	ELB054524	24	2	0.8	079916902241	use UPC
6"	ELB064524	24	4.1	0.99	079916902258	use UPC
7"	ELB074524	24	5.4	1.22	079916902265	use UPC
8"	ELB084524	24	8	1.54	079916902272	use UPC
10"	ELB104524	8	3.5	1.83	079916902289	use UPC
12"	ELB124524	1	8	2.81	079916902296	use UPC
14"	ELB144524	1	12	3.6	079916902302	use UPC
16"	ELB164524	1	5.4	4.5	079916902029	use UPC

**24 Gauge - 90 Degree ( Strapped)**

Dia	Model No.	Bdle	Cs Cb.	Pc Wt. Lbs	UPC Code	Bar Code
5"	ELB059024	12	2.4	1.12	079916902036	use UPC
6"	ELB069024	12	2.7	1.36	079916902043	use UPC
7"	ELB079024	12	5.4	1.86	079916902050	use UPC
8"	ELB089024	12	6.7	2.29	079916902067	use UPC
9"	ELB099024	4	3	2.62	079916902074	use UPC
10"	ELB109024	4	3.8	3.2	079916902081	use UPC
12"	ELB129024	1	7.1	4.48	079916902098	use UPC
14"	ELB149024	1	9.8	5.52	079916902104	use UPC
16"	ELB169024	1	6.5	6.91	079916902111	use UPC



ELB



BOXED

**24 Gauge - 90 Degree ( Strapped)**

Dia	Model No.	Bdle	Cs Cb.	Pc Wt. Lbs	UPC Code	Bar Code
18"	ELB189024	1	5.5	8.5	079916902319	use UPC
20"	ELB209024	1	6.5	10.28	079916902111	use UPC
22"	ELB229024	1	6.5	12.15	079916902128	use UPC
24"	ELB249024	1	14	14.05	079916902135	use UPC

**WE ALSO CARRY BOXED ELBOWS**  
**CALL FOR PRICE & AVAILABILITY**

To Order Call: 1-800-665-4328 or Fax: 905-641-2696

## DAMPERS *Galvanized*

### Slot Dampers with Wing Nut

Dia	Model No.	Cs	Cs Cb.	Pc Wt. Lbs	UPC Code	Bar Code
4"	SLDA04	50	0.13	0.086	079916907239	5 00 79916 90723 4
5"	SLDA05	50	0.13	0.131	079916907246	5 00 79916 90724 1
6"	SLDA06	50	0.13	0.188	079916907253	5 00 79916 90725 8



SLDA

### Dampers with Handle

Dia	Model No.	Cs	Cs Cb.	Pc Wt. Lbs	UPC Code	Bar Code
4"	DAMP04	50	0.13	0.086	079916907161	5 00 79916 90725 8
5"	DAMP05	50	0.13	0.131	079916907178	5 00 79916 90717 3
6"	DAMP06	50	0.13	0.188	079916907185	5 00 79916 90718 0
7"	DAMP07	50	0.28	0.294	079916907192	5 00 79916 90719 7
8"	DAMP08	50	0.28	0.382	079916907208	5 00 79916 90720 3
10"	DAMP10	50	1.1	0.593	079916907215	5 00 79916 90721 0
12"	DAMP12	50	1.13	0.863	079916907222	5 00 79916 90722 7
14"	DAMP14	50	2.4	1.17	079916000886	5 00 79916 00088 1
16"	DAMP16	50	2.4	1.52	079916000893	5 00 79916 00089 8



DAMP

### Dampers with Handle Wingnuts on Both Sides

Dia	Model No.	Cs	Cs Cb.	Pc Wt. Lbs	UPC Code	Bar Code
4"	DAMP04TS	50	0.13	0.086	079916034041	50079916034046
5"	DAMP05TS	50	0.13	0.131	079916034058	50079916034053
6"	DAMP06TS	50	0.13	0.188	079916034065	50079916034060
7"	DAMP07TS	50	0.28	0.294	079916034102	50079916034107
8"	DAMP08TS	50	0.28	0.382	079916034119	50079916034114
10"	DAMP10TS	50	1.13	0.593	079916034126	50079916034121
12"	DAMP12TS	50	1.13	0.863	079916034133	50079916034138
14"	DAMP14TS	50	2.4	1.17	079916034140	50079916034145



DAMP..TS

## VERTICAL DRAFT DIVERTER *Galvanized*

Dia	Model No.	Cs	Cs Cb.	Pc Wt. Lbs	UPC Code	Bar Code
3"	VEDD03	1	0.14	1.99	079916909059	use UPC
4"	VEDD04	1	0.34	2.34	079916909066	use UPC
5"	VEDD05	1	0.75	4.1	079916909073	use UPC
6"	VEDD06	1	1.25	5.43	079916909080	use UPC
7"	VEDD07	1	1.56	6.53	079916909097	use UPC
8"	VEDD08	1	2.3	9.29	079916909103	use UPC
10"	VEDD10	1	4.8	11.93	079916909110	use UPC
12"	VEDD12	1	6.72	16.77	079916909127	use UPC



VEDD

## ROUND END CAPS *Galvanized - Non-Crimped*

### 28 Gauge - Non-Crimped

Dia	Model No.	Cs	Cs Cb.	Pc Wt. Lbs	UPC Code	Bar Code
3"	CAP0328	10	0.13	0.212	079916906904	5 00 79916 90690 9
4"	CAP0428	10	0.47	0.34	079916906911	5 00 79916 90691 6
5"	CAP0528	10	0.47	0.406	079916906928	5 00 79916 90692 3
6"	CAP0628	10	1.13	0.542	079916906935	5 00 79916 90693 0
7"	CAP0728	10	1.13	0.648	079916906942	5 00 79916 90694 7



CAP

### 26 Gauge - Non-Crimped

Dia	Model No.	Cs	Cs Cb.	Pc Wt. Lbs	UPC Code	Bar Code
8"	CAP0826	10	1.62	0.9	079916906959	5 00 79916 90695 4
9"	CAP0926	10	1.13	1.05	079916906966	5 00 79916 90696 1
10"	CAP1026	5	1.13	1.35	079916906973	5 00 79916 90697 8
12"	CAP1226	5	1.13	1.73	079916906980	5 00 79916 90698 5
14"	CAP1426	5	1.62	2.29	079916906997	5 00 79916 90698 5
16"	CAP1626	1	0.3	2.709	079916907000	5 00 79916 90700 5
18"	CAP1826	1	0.38	3.077	079916907017	5 00 79916 9071 7
20"	CAP2026	1	0.46	3.645	079916907024	5 00 79916 9072 4



CAP

## ROUND END PLUGS - Galvanized *(Crimped)*

### 28 Gauge - Crimped

Dia	Model No.	Cs	Cs Cb.	Pc Wt. Lbs	UPC Code	Bar Code
3"	PLUG0328	10	0.13	0.21	079916907031	5 00 79916 90703 6
4"	PLUG0428	10	0.47	0.301	079916907048	5 00 79916 90704 3
5"	PLUG0528	10	0.47	0.405	079916907055	5 00 79916 90705 0
6"	PLUG0628	10	1.13	0.539	079916907062	5 00 79916 90706 7
7"	PLUG0728	10	1.13	0.644	079916907079	5 00 79916 90707 4

### 26 Gauge - Crimped

Dia	Model No.	Cs	Cs Cb.	Pc Wt. Lbs	UPC Code	Bar Code
8"	PLUG0826	10	1.62	0.897	079916907086	5 00 79916 90708 1
9"	PLUG0926	10	1.13	1.05	079916907093	5 00 79916 90709 8
10"	PLUG1026	5	1.13	1.347	079916907109	5 00 79916 90710 4
12"	PLUG1226	5	1.13	1.827	079916907116	5 00 79916 90711 1
14"	PLUG1426	5	1.62	2.29	079916907123	5 00 79916 90712 8
16"	PLUG1626	1	2.89	2.706	079916907130	USE UPC
18"	PLUG1826	1	2.65	3.074	079916907147	USE UPC
20"	PLUG2026	1	2.65	3.642	079916907154	USE UPC



PLUG





## "A" COLLARS & CONNECTORS Galvanized Collars

### Warm Air "A" Collars - Fishlock Non-crimped (3" length)

Dia	Model No.	Cs	Cs Cb.	Pc Wt. Lbs	UPC Code	Bar Code
3"	ACON0332	10	0.5	0.12	079916904115	5 00 79916 90411 0
4"	ACON0432	10	0.5	0.15	079916904122	5 00 79916 90412 7
5"	ACON0532	10	0.5	0.2	079916904139	5 00 79916 90413 4
6"	ACON0632	10	1.1	0.27	079916904146	5 00 79916 90414 1
7"	ACON0732	10	1.1	0.3	079916904153	5 00 79916 90415 8
8"	ACON0832	10	1.6	0.35	079916904160	5 00 79916 90416 5



ACON

### Warm Air "A" Collars - Fishlock Crimped (5" length)

Dia	Model No.	Cs	Cs Cb.	Pc Wt. Lbs	UPC Code	Bar Code
4"	ACLL04532B	50	4.13	0.22	079916904344	5 00 79916 90434 9
5"	ACLL05532B	50	5.36	0.26	079916904351	5 00 79916 90435 6
6"	ACLL06532B	50	4.13	0.34	079916904368	5 00 79916 90436 3
7"	ACLL07532B	50	9	0.38	079916904375	5 00 79916 90437 0
8"	ACLL08532B	10	2.65	0.51	079916904382	5 00 79916 90438 7



ACLL...B

### 28 Gauge "A" Collars - Fishlock Non-crimped (3" length)

Dia	Model No.	Cs	Cs Cb.	Pc Wt. Lbs	UPC Code	Bar Code
9"	ACON0928	5	1.6	0.63	079916904177	5 00 79916 90417 2
10"	ACON1028	5	1.6	0.68	079916904184	5 00 79916 90418 9
12"	ACON1228	5	1.6	0.8	079916904191	5 00 79916 90419 6
14"	ACON1428	5	1.6	0.99	079916904207	5 00 79916 90420 2



ACOL

### 28 Gauge "A" Collars - Fishlock Crimped (5" length)

Dia	Model No.	Cs	Cs Cb.	Pc Wt. Lbs	UPC Code	Bar Code
10"	ACLL10528	10	4.13	1.02	079916904399	5 00 79916 90439 4
12"	ACLL12528	10	4.13	1.18	079916904405	5 00 79916 90440 0

### "A" Collar with Damper

Dia	Model No.	Cs	Cs Cb.	Pc Wt. Lbs	UPC Code	Bar Code
4"	ACWD0430	30	2.68	0.4	079916032184	5 00 79916 03218 9
5"	ACWD0530	25	4.93	0.43	079916032191	5 00 79916 03219 6
6"	ACWD0630	25	4.93	0.47	079916032207	5 00 79916 03220 2
7"	ACWD0730	25	6.49	0.56	079916032214	5 00 79916 03221 9
8"	ACWD0830	25	9	0.78	079916032221	5 00 79916 03222 6
10"	ACWD1028	10	5.37	1.34	079916032238	5 00 79916 03223 3
12"	ACWD1228	10	5.37	1.7	079916032245	5 00 79916 03224 0
14"	ACWD1428	10	5.37	2.1	079916032252	5 00 79916 03225 7



ACWD

### Warm Air "A" Collars - Fishlock Crimped (3" length)

Dia	Model No.	Cs	Cs Cb.	Pc Wt. Lbs	UPC Code	Bar Code
3"	ACOL0332	10	0.5	0.12	079916904214	5 00 79916 90421 9
4"	ACOL0432	10	0.5	0.15	079916904221	5 00 79916 90422 6
4" Bulk	ACOL0432B	100	5.4	0.14	079916932453	5 00 79916 93245 8
5"	ACOL0532	10	0.5	0.2	079916904238	5 00 79916 90423 3
5" Bulk	ACOL0532B	100	5.4	0.17	079916904245	5 00 79916 90424 0
6"	ACOL0632	10	1.1	0.27	079916904252	5 00 79916 90425 7
6" Bulk	ACOL0632B	100	6.5	0.21	079916904269	5 00 79916 90426 4
7"	ACOL0732	10	1.1	0.3	079916904276	5 00 79916 90427 1
7" Bulk	ACOL0732B	100	9	0.24	079916904283	5 00 79916 90428 8
8"	ACOL0832	10	1.6	0.34	079916904290	5 00 79916 90429 5
8" Bulk	ACOL0832B	100	9	0.27	079916032153	5 00 79916 90428 8



ACOL

### 28 Gauge "A" Collars Fishlock - Crimped (3" length)

Dia	Model No.	Cs	Cs Cb.	Pc Wt. Lbs	UPC Code	Bar Code
9"	ACOL0928	5	1.1	0.63	079916904306	5 00 79916 90430 1
10"	ACOL1028	5	1.6	0.68	079916904313	5 00 79916 90431 8
12"	ACOL1228	5	1.6	0.8	079916904320	5 00 79916 90432 5
14"	ACOL1428	5	1.6	0.99	079916904337	5 00 79916 90433 2
16"	ACOL1628	5	1.6	1.09	079916032160	5 00 79916 03216 5
18"	ACOL1828	5	4.1	1.29	079916032177	5 00 79916 03217 2

### 28 Gauge "A" Collars-DUCT BOARD Fishlock - 4" length

Dia	Model No.	Cs	Cs Cb.	Pc Wt. Lbs	UPC Code	Bar Code
4"	ACOL0428DB	100	5.3	0.032	079916005829	5 00 79916 00582 4
5"	ACOL0528DB	100	5.3	0.39	079916005836	5 00 79916 00583 1
6"	ACOL0628DB	100	8.7	0.47	079916005843	5 00 79916 00584 8



ACOL...DB

### 26 Gauge Galvanized Coupler 6" length with crimp at each end

Dia	Model No.	Cs	Cs Cb.	Pc Wt. Lbs	UPC Code	Bar Code
4"	CPG046	100	9	0.48	079916001272	5 00 79916 00127 7
5"	CPG056	100	9	0.59	079916001289	5 00 79916 00128 4
6"	CPG066	50	9	0.7	079916001296	5 00 79916 00129 1
7"	CPG076	40	9	0.82	079916007618	5 00 79916 00761 3
8"	CPG086	34	9	0.93	079916007625	5 00 79916 00762 0
10"	CPG106	20	9	1.2	079916007632	5 00 79916 00763 7
12"	CPG126	15	9	1.38	079916007649	5 00 79916 00764 4
14"	CPG14624	10	9	1.9	079916007656	5 00 79916 00765 1



CPG

**Galvanized Sheets Available.**  
Ask for sizes and gauges.

## BOOTS - Angle & Angle Stack Galvanized



AB



EB

Angle Boot						
Model No.	Description	Cs	Cs Cb.	Pc Wt. Lbs	UPC Code	Bar Code
AB24105	2 1/4" x 10" x 5"	12	2.6	0.82	079916904900	5 00 79916 90490 5
AB24106	2 1/4" x 10" x 6"	10	2.6	0.9	079916904917	5 00 79916 90491 2
AB24125	2 1/4" x 12" x 5"	10	2.6	0.98	079916904924	5 00 79916 90492 9
AB24126	2 1/4" x 12" x 6"	8	2.6	1.1	079916904931	5 00 79916 90493 6
AB24145	2 1/4" x 14" x 5"	8	2.6	1.13	079916031200	5 00 79916 03120 5
AB3104	3" x 10" x 4"	45	9	0.74	079916904948	5 00 79916 90494 3
AB3105	3" x 10" x 5"	40	9	0.85	079916904955	5 00 79916 90495 0
AB3106	3" x 10" x 6"	30	9	1.06	079916904962	5 00 79916 90496 7
AB34104	3 1/4" x 10" x 4"	40	9	0.76	079916904979	5 00 79916 90494 4
AB34105	3 1/4" x 10" x 5"	40	9	0.86	079916904986	5 00 79916 90498 1
AB34106	3 1/4" x 10" x 6"	27	9	0.95	079916904993	5 00 79916 90499 8
AB34126	3 1/4" x 12" x 6"	5	2.6	1.33	079916932941	5 00 79916 93294 6
AB4104	4" x 10" x 4"	38	9	0.83	079916905006	5 00 79916 90500 1
AB4105	4" X 10" x 5"	34	9	0.92	079916905013	5 00 79916 90501 8
AB4106	4" x 10" x 6"	27	9	1.01	079916905020	5 00 79916 90502 5
AB4107	4" x 10" x 7"	6	2.6	1.38	079916905037	5 00 79916 90503 2
AB4108	4" x 10" x 8"	5	2.6	1.59	079916932460	5 00 79916 93246 5
AB4125	4" x 12" x 5"	5	9	1.27	079916031996	5 00 79916 03199 1
AB4126	4" x 12" x 6"	25	9	1.18	079916905044	5 00 79916 90504 9
AB4127	4" x 12" x 7"	5	2.6	1.39	079916905051	5 00 79916 90505 6
AB4128	4" x 12" x 8"	4	2.6	1.9	079916932316	5 00 79916 93231 5
AB4147	4" x 14" x 7"	4	2.6	1.67	079916031217	5 00 79916 03121 2
AB4148	4" x 14" x 8"	3	2.6	1.81	079916032115	5 00 79916 03211 0
AB6106	6" x 10" x 6"	5	2.6	1.46	079916905068	5 00 79916 90506 3
AB6107	6" x 10" x 7"	5	2.6	1.49	079916932309	5 00 79916 93230 9
AB6108	6" x 10" x 8"	5	2.6	1.52	079916032122	5 00 79916 03212 7
AB6126	6" x 12" x 6"	5	2.6	1.62	079916032122	5 00 79916 90507 0
AB6127	6" x 12" x 7"	4	2.6	1.88	079916932330	5 00 79916 93233 5
AB6128	6" x 12" x 8"	5	9	1.91	079916032139	5 00 79916 03213 4
AB6148	6" x 14" x 8"	3	2.6	2.17	079916932484	5 00 79916 93248 9

End Boot						
Model No.	Description	Cs	Cs Cb.	Pc Wt. Lbs	UPC Code	Bar Code
EB24106	2 1/4" x 10" x 6"	10	2.65	1.04	079916905143	5 00 79916 90514 8
EB24125	2 1/4" x 12" x 5"	10	2.65	0.97	079916905150	5 00 79916 90515 5
EB24126	2 1/4" x 12" x 6"	8	2.65	1.16	079916905167	5 00 79916 90516 2
EB24145	2 1/4" x 14" x 5"	8	2.65	1.11	079916905174	5 00 79916 90517 9
EB24146	2 1/4" x 14" x 6"	6	2.65	1.3	079916905181	5 00 79916 90518 6
EB3104	3" x 10" x 4"	50	9	0.69	079916905198	5 00 79916 90519 3
EB3105	3" x 10" x 5"	40	9	0.82	079916905204	5 00 79916 90520 9
EB3106	3" x 10" x 6"	28	9	1	079916905211	5 00 79916 90521 6
EB34104	3 1/4" x 10" x 4"	50	9	0.7	079916905228	5 00 79916 90522 3
EB34105	3 1/4" x 10" x 5"	40	9	0.84	079916905235	5 00 79916 90523 0
EB34106	3 1/4" x 10" x 6"	24	9	0.86	079916905242	5 00 79916 90524 7
EB34126	3 1/4" x 12" x 6"	8	9	1.25	079916072135	5 00 79916 07213 0
EB4104	4" x 10" x 4"	40	9	0.76	079916905259	5 00 79916 90525 4
EB4105	4" x 10" x 5"	40	9	0.93	079916905266	5 00 79916 90526 1
EB4106	4" x 10" x 6"	30	9	0.96	079916905273	5 00 79916 90527 8
EB4107	4" x 10" x 7"	7	2.6	1.37	079916905280	5 00 79916 90528 5
EB4108	4" x 10" x 8"	5	2.65	1.6	079916905297	5 00 79916 90529 2
EB4125	4" x 12" x 5"	25	9	0.97	079916072142	5 00 79916 07214 7
EB4126	4" x 12" x 6"	25	9	1.1	079916905303	5 00 79916 90530 8
EB4127	4" x 12" x 7"	6	2.65	1.44	079916905310	5 00 79916 90531 5
EB4128	4" x 12" x 8"	4	2.65	1.76	079916905327	5 00 79916 90532 2
EB4146	4" x 14" x 6"	8	2.65	1.24	079916905334	5 00 79916 90533 9
EB4147	4" x 14" x 7"	4	2.65	1.64	079916905341	5 00 79916 90534 6
EB4148	4" x 14" x 8"	5	2.65	1.82	079916905358	5 00 79916 90535 3
EB6105	6" x 10" x 5"	6	2.65	1.18	079916905365	5 00 79916 90536 0
EB6106	6" x 10" x 6"	8	2.65	1.18	079916905372	5 00 79916 90537 7
EB6107	6" x 10" x 7"	8	2.65	1.32	079916905389	5 00 79916 90538 4
EB6108	6" x 10" x 8"	4	2.65	1.68	079916905396	5 00 79916 90539 1
EB6126	6" x 12" x 6"	6	2.65	1.35	079916905402	5 00 79916 90540 7
EB6127	6" x 12" x 7"	10	5.33	1.49	079916905419	5 00 79916 90541 4
EB6128	6" x 12" x 8"	4	2.65	1.77	079916905426	5 00 79916 90542 9
EB6148	6" x 14" x 8"	4	2.65	1.87	079916761435	5 00 79916 76143 0

**\*\*Note: Last Digit represents Pipe Diameter**



ABST



EBST

Angle Stack Boot with Cleats Attached						
Model No.	Description	Cs	Cs Cb.	Pc Wt. Lbs	UPC Code	Bar Code
ABST24126	2 1/4" x 12" x 6"	8	2.6	1.45	079916905082	5 00 79916 90508 7
ABST34105	3 1/4" x 10" x 5"	40	9	1.22	079916905105	5 00 79916 90510 0
ABST34106	3 1/4" x 10" x 6"	27	9	1.26	079916905112	5 00 79916 90511 7
ABST34107	3 1/4" x 10" x 7"	6	2.6	1.56	079916905129	5 00 79916 90512 4
ABST34126	3 1/4" x 12" x 6"	5	2.6	1.51	079916007724	5 00 79916 00772 9

End Stack Boot with Cleats Attached						
Model No.	Description	Cs	Cs Cb.	Pc Wt. Lbs	UPC Code	Bar Code
EBST34105	3 1/4" x 10" x 5"	40	9	1.14	079916905457	N/A
EBST34106	3 1/4" x 10" x 6"	25	9	1.15	079916905464	5 00 79916 90546 9
EBST34126	3 1/4" x 12" x 6"	8	9	1.17	079916018089	5 00 79916 01808 4

**BOOTS - Universal &  
Universal Stack - Galvanized**



UB

<b>Universal Boot</b>						
Model No.	Description	Cs	Cs Cb.	Pc Wt. Lbs	UPC Code	Bar Code
UB24105	2 1/4" x 10" x 5"	15	2.6	0.75	079916906102	5 00 79916 90610 7
UB24106	2 1/4" x 10" x 6"	14	2.6	0.83	079916906119	5 00 79916 90611 4
UB24125	2 1/4" x 12" x 5"	15	2.65	0.86	079916906126	5 00 79916 90612 1
UB24126	2 1/4" x 12" x 6"	10	2.65	0.97	079916906133	5 00 79916 90613 8
UB24146	2 1/4" x 14" x 6"	8	2.65	1.24	079916000565	5 00 79916 00056 0
UB3104	3" x 10" x 4"	60	9	0.67	079916906140	5 00 79916 90614 5
UB3105	3" x 10" x 5"	50	9	0.68	079916906157	5 00 79916 90615 2
UB3106	3" x 10" x 6"	45	9	0.78	079916906164	5 00 79916 90616 9
UB3107	3" x 10" x 7"	30	9	1.11	079916000879	5 00 79916 00087 4
UB34104	3 1/4" x 10" x 4"	60	9	0.72	079916906171	5 00 79916 90617 6
UB34105	3 1/4" x 10" x 5"	45	9	0.76	079916906188	5 00 79916 90618 3
UB34106	3 1/4" x 10" x 6"	40	9	0.88	079916906195	5 00 79916 90619 0
UB34107	3 1/4" x 10" x 7"	10	2.65	1.13	079916906201	5 00 79916 90620 6
UB34108	3 1/4" x 10" x 8"	8	2.65	1.48	079916000435	5 00 79916 00043 0
UB4104	4" x 10" x 4"	60	9	0.68	079916906218	5 00 79916 90621 3
UB4105	4" x 10" x 5"	45	9	0.73	079916906225	5 00 79916 90622 0
UB4106	4" x 10" x 6"	40	9	0.79	079916906232	5 00 79916 90623 7
UB4107	4" x 10" x 7"	6	2.65	1.3	079916906249	5 00 79916 90624 4
UB4108	4" x 10" x 8"	6	3	1.52	079916000473	5 00 79916 00047 8
UB4125	4" x 12" x 5"	10	2.65	0.99	079916000664	5 00 79916 00066 9
UB4126	4" x 12" x 6"	7	2.65	1.07	079916906256	5 00 79916 90625 1
UB4127	4" x 12" x 7"	6	2.65	1.07	079916906263	5 00 79916 90626 8
UB4128	4" x 12" x 8"	6	2.65	1.54	079916000480	5 00 79916 00048 5
UB4146	4" x 14" x 6"	6	2.65	1.2	079916000497	5 00 79916 00049 2
UB4147	4" x 14" x 7"	4	2.65	1.58	079916000381	5 00 79916 00038 6
UB4148	4" x 14" x 8"	4	2.65	1.82	079916000398	5 00 79916 00039 3
UB6105	6" x 10" x 5"	8	2.65	1.03	079916000572	5 00 79916 00057 7
UB6106	6" x 10" x 6"	8	2.65	1.06	079916906270	5 00 79916 90627 5
UB6107	6" x 10" x 7"	7	2.65	1.3	079916906287	5 00 79916 90628 2
UB6108	6" x 10" x 8"	6	2.65	1.35	079916000541	5 00 79916 00054 6
UB6126	6" x 12" x 6"	8	2.65	1.3	079916906294	5 00 79916 90629 9
UB6127	6" x 12" x 7"	10	2.65	1.49	079916932668	5 00 79916 93266 3
UB6128	6" x 12" x 8"	4	2.65	1.78	079916000411	5 00 79916 00041 6
UB6148	6" x 14" x 8"	4	2.65	1.79	079916000428	5 00 79916 00042 3

**\*\*Note: Last Digit represents Pipe Diameter**



UB...L

<b>Universal Boot Long Throat Transition 1" Longer Than Regular</b>						
Model No.	Description	Cs	Cs Cb.	Pc Wt. Lbs	UPC Code	Bar Code
UB3105L	3" X 10" X 5"	40	9	0.73	079916932149	5 00 79916 93214 4
UB4105L	4" x 10" x 5"	35	9	0.811	079916932156	5 00 79916 93215 1
UB4106L	4" x 10" x 6"	30	9	0.855	079916932125	5 00 79916 93212 7

<b>Register Box</b>						
Model No.	Description	Cs	Cs Cb.	Pc Wt. Lbs	UPC Code	Bar Code
RBOX610	6" x 10"	50	9	0.77	079916003733	5 00 79916 00373 8



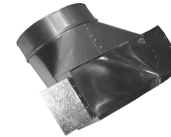
RBOX

**BOOTS - Universal Stack & Ceiling  
Galvanized**



UBST

<b>Universal Straight Stack Boot With Cleats Attached</b>						
Model No.	Description	Cs	Cs Cb.	Pc Wt. Lbs	UPC Code	Bar Code
UBST24106	2 1/4" x 10" x 6"	14	2.65	1.13	079916906300	5 00 79916 90630 5
UBST24126	2 1/4" x 12" x 6"	10	2.65	1.25	079916906317	5 00 79916 90631 2
UBST34104	3 1/4" x 10" x 4"	60	2.65	1.03	079916906324	5 00 79916 90632 9
UBST34105	3 1/4" x 10" x 5"	45	2.65	1.09	079916906331	5 00 79916 90633 6
UBST34106	3 1/4" x 10" x 6"	40	2.65	1.19	079916906348	5 00 79916 90634 3
UBST34107	3 1/4" x 10" x 7"	10	2.65	1.49	079916906355	5 00 79916 90635 0
UBST34108	3 1/4" x 10" x 8"	5	2.65	1.78	079916906362	5 00 79916 90636 7
UBST34126	3 1/4" x 12" x 6"	8	2.65	1.53	079916906379	5 00 79916 90637 4



CB

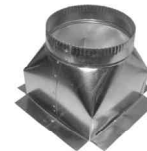
<b>Ceiling Boot</b>						
Model No.	Description	Cs	Cs Cb.	Pc Wt. Lbs	UPC Code	Bar Code
CB4105	4" x 10" x 5"	30	9	0.99	079916906386	5 00 79916 90638 1
CB4106	4" x 10" x 6"	27	9	1.06	079916906393	5 00 79916 90639 8

**CEILING BOXES-Galvanized**



CBS

<b>Ceiling Box Side</b>						
Model No.	Description	Cs	Cs Cb.	Pc Wt. Lbs	UPC Code	Bar Code
CBS664	6" x 6" x 4"	30	9	1.66	079916404226	5 00 79916 40422 1
CBS665	6" x 6" x 5"	15	9	1.83	079916906409	5 00 79916 90640 4
CBS666	6" x 6" x 6"	15	6.49	2.15	079916906416	5 00 79916 90641 1
CBS885	8" x 8" x 5"	12	9	2.71	079916931661	5 00 79916 93166 6
CBS886	8" x 8" x 6"	12	9	2.75	079916906423	5 00 79916 90642 8
CBS887	8" x 8" x 7"	12	9	2.78	079916906430	5 00 79916 90643 5
CBS888	8" x 8" x 8"	12	9	3.48	079916906447	5 00 79916 90644 2



CBT

<b>Ceiling Box Top</b>						
Model No.	Description	Cs	Cs Cb.	Pc Wt. Lbs	UPC Code	Bar Code
CBT664	6" x 6" x 4"	45	9	1.55	079916034003	5 00 79916 03400 8
CBT665	6" x 6" x 5"	45	9	1.57	079916906454	5 00 79916 90645 9
CBT666	6" x 6" x 6"	30	9	1.63	079916906461	5 00 79916 90646 6
CBT885	8" x 8" x 5"	34	9.17	1.72	079916034010	5 00 79916 03401 5
CBT886	8" x 8" x 6"	35	9	1.74	079916906478	5 00 79916 90647 3
CBT887	8" x 8" x 7"	25	9	1.94	079916906485	5 00 79916 90648 0
CBT888	8" x 8" x 8"	25	9	2.01	079916906492	5 00 79916 90649 7





## CLEATS - DRIVE & 'S'

48", 60", 96" & 120" - Galvanized

### DRIVE CLEATS

#### 30 Gauge Drive Cleat

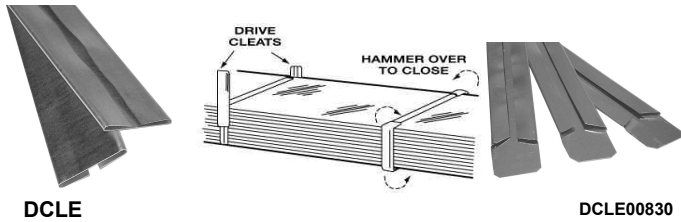
Model No.	Description	Cs	Cs Cb.	Pc Wt. Lbs	UPC Code	Bar Code
DCLE00830	8" long	400	0.51	0.066	079916034157	50079916034152
DCLE01030	10" long	400	0.51	0.083	079916920207	N/A
DCLE04830	48" long	20	0.07	0.39	079916746821	N/A
DCLE06030	60" long	20	0.09	0.488	079916912141	N/A
DCLE09630	96" long	20	0.14	0.78	079916912158	N/A
DCLE12030	120" long	20	0.17	0.976	079916745824	N/A

#### 28 Gauge Drive Cleat

Model No.	Description	Cs	Cs Cb.	Pc Wt. Lbs	UPC Code	Bar Code
DCLE04828	48" long	20	0.7	0.515	079916746814	N/A
DCLE06028	60" long	20	0.09	0.644	079916912165	N/A
DCLE09628	96" long	20	0.14	1.03	079916912172	N/A
DCLE12028	120" long	20	0.17	1.288	079916743820	N/A

#### 26 Gauge Drive Cleat

Model No.	Description	Cs	Cs Cb.	Pc Wt. Lbs	UPC Code	Bar Code
DCLE06026	60" long	20	0.09	0.765	079916912189	N/A
DCLE12026	120" long	20	0.17	1.529	079916743813	N/A



DCLE

DCLE00830

### 'S' CLEATS

#### 30 Gauge 'S' Cleat

Model No.	Description	Cs	Cs Cb.	Pc Wt. Lbs	UPC Code	Bar Code
SCLE04830	48" long	20	0.07	0.671	079916003863	N/A
SCLE06030	60" long	20	0.21	0.839	079916912196	N/A
SCLE09630	96" long	20	0.14	1.343	079916912202	N/A
SCLE012030	120" long	20	0.17	1.678	079916003900	N/A

#### 28 Gauge 'S' Cleat

Model No.	Description	Cs	Cs Cb.	Pc Wt. Lbs	UPC Code	Bar Code
SCLE04828	48" long	20	0.13	0.895	079916003856	N/A
SCLE06028	60" long	20	0.21	1.119	079916912219	N/A
SCLE09628	96" long	20	0.33	1.79	079916912226	N/A
SCLE12028	120" long	20	0.17	2.238	079916003894	N/A

#### 26 Gauge 'S' Cleat

Model No.	Description	Cs	Cs Cb.	Pc Wt. Lbs	UPC Code	Bar Code
SCLE06026	60" long	20	0.21	1.315	079916912233	N/A
SCLE12026	120" long	20	0.17	2.631	079916003894	N/A

## JOIST LINING, METAL STRAPPING

RETURN AIR FRAMES  
& Y-SADDLES

### Joist Lining

Model No.	Description	Cs	Cs Cb.	Pc Wt. Lbs	UPC Code	Bar Code
JOIL1636	16" x 35.5"	10	1.05	1.584	079916912097	N/A
JOIL1730	17" x 30"	10	0.51	1.426	079916912103	N/A
JOIL1736	17" x 35.5"	10	0.51	1.683	079916912110	N/A
JOIL1936	19" x 35.5"	10	0.51	1.881	079916002996	N/A
JOIL3336	33" x 35.5"	5	0.51	3.267	079916912127	N/A



JOIL  
c/w Pittsburgh Seam

### Metal Strapping 1"

#### 24 Gauge

Model No.	Description	Cs	Cs Cb.	Pc Wt. Lbs	UPC Code	Bar Code
STRAP120	120"	10	0.03	0.828	079916004037	N/A

### Return Air Frame

Model No.	Description	Cs	Cs Cb.	Pc Wt. Lbs	UPC Code	Bar Code
RAF60	60" long	20	0.22	0.46	079916912134	N/A



RAF



STRAP

### Y SADDLES

#### 28 Gauge & 26 Gauge

Model No.	Description	Cs	Cs Cb.	Pc Wt. Lbs	UPC Code	Bar Code
SADD328	3" diameter	10	1.62	0.7	079916909332	50079916909337
SADD428	4" diameter	10	1.62	0.95	079916909349	50079916909344
SADD528	5" diameter	5	1.62	1.31	079916909356	50079916909351
SADD628	6" diameter	5	2.65	1.68	079916909363	50079916909368
SADD728	7" diameter	5	5.36	2.5	079916932491	50079916932496
SADD826	8" diameter	5	5.36	3.52	079916932514	50079916932519



SADD



SCLE

The Deflect-o® Advantage  
Committed to quality and service,  
Deflecto has the right size galvanized  
fittings when you need them.

# GALVANIZED TEES

## TEES - Without Collar



TEE

28 Gauge Tee without Collar						
Model No.	Description	Cs	Cs Cb.	Pc Wt. Lbs	UPC Code	Bar Code
TEE0328	3" diameter	10	1.13	0.67	079916908908	50079916908903
TEE0428	4" diameter	10	1.13	0.95	079916908915	50079916908910
TEE0528	5" diameter	10	4.13	1.38	079916908922	50079916908927
TEE0628	6" diameter	10	5.36	1.83	079916908939	50079916908934

26 Gauge Tee without Collar						
Model No.	Description	Cs	Cs Cb.	Pc Wt. Lbs	UPC Code	Bar Code
TEE0926	9" diameter	4	5.36	4.58	079916908946	50079916908941
TEE1026	10" diameter	4	9	5.48	079916932286	50079916932281
TEE1226	12" diameter	1	9	5.67	079916004075	use UPC
TEE1426	14" diameter	1	2.92	8.07	079916004099	use UPC

24 Gauge Tee without Collar						
Model No.	Description	Cs	Cs Cb.	Pc Wt. Lbs	UPC Code	Bar Code
TEE1024	10" diameter	4	9	6.3	079916908953	50079916908958
TEE1224	12" diameter	1	2.65	6.68	079916908960	50079916004087
TEE1424	14" diameter	1	2.65	9.5	079916004082	use UPC
TEE1624	16" diameter	1	4.07	12.69	079916004105	use UPC
TEE1824	18" diameter	1	5.5	15.6	079916004112	use UPC
TEE2024	20" diameter	1	7.22	18.57	079916004129	use UPC

## Reducing Tees



TEE

28 Gauge Tee without Collar						
Model No.	A x B x C	Cs	Cs Cb.	Pc Wt. Lbs	UPC Code	Bar Code
TEE055428	5" x 5" x 4"	10	5.35	1.41	079916004051	50079916004056
TEE108828	10" x 8" x 8"	10	9	4.03	079916004068	50079916004063

30 Gauge Tee without Collar						
Model No.	A x B x C	Cs	Cs Cb.	Pc Wt. Lbs	UPC Code	Bar Code
TEE066430	6" x 6" x 4"	10	4.13	1.15	079916932293	50079916932298
TEE066530	6" x 6" x 5"	10	9	1.22	079916932613	50079916932618

## TEES - With Collar



TWC

28 Gauge Tee with Collar						
Model No.	Description	Cs	Cs Cb.	Pc Wt. Lbs	UPC Code	Bar Code
TWC0428	4" diameter	10	2.65	1.35	079916908977	50079916908972
TWC0528	5" diameter	10	4.13	1.69	079916908984	50079916908989
TWC0628	6" diameter	10	5.36	2.08	079916908991	50079916908996
TWC0728	7" diameter	5	4.13	2.71	079916909004	50079916909009

26 Gauge Tee with Collar						
Model No.	Description	Cs	Cs Cb.	Pc Wt. Lbs	UPC Code	Bar Code
TWC0426	4" diameter	10	2.65	1.58	079916004143	50079916004148
TWC0526	5" diameter	10	4.13	1.99	079916909011	50079916909016
TWC0626	6" diameter	10	5.36	2.48	079916909028	50079916909023
TWC0726	7" diameter	5	4.13	3.2	079916909035	50079916909030
TWC0826	8" diameter	4	4.13	3.92	079916909042	50079916909047

## Reducing Tees



TWC

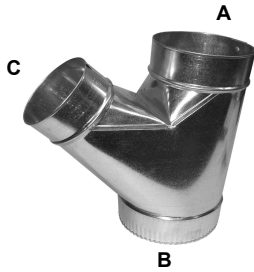
30 Gauge Tee with Collar						
Model No.	A x B x C	Cs	Cs Cb.	Pc Wt. Lbs	UPC Code	Bar Code
TWC066430	6" x 6" x 4"	10	4.13	1.53	079916000619	50079916000614

28 Gauge Tee with Collar						
Model No.	A x B x C	Cs	Cs Cb.	Pc Wt. Lbs	UPC Code	Bar Code
TWC044628	4" x 4" x 6"	10	4.13	1.84	079916000589	50079916000584
TWC064428	6" x 4" x 4"	10	4.13	1.94	079916000596	50079916000591
TWC066428	6" x 6" x 4"	10	4.13	2.01	079916000602	50079916000607
TWC088428	8" x 8" x 4"	10	6.45	2.47	N/A	N/A
TWC088628	8" x 8" x 6"	10	4.13	3.08	N/A	N/A
TWC0881028	8" x 8" x 10"	4	4.13	4.75	079916000343	50079916000348
TWC0881228	8" x 8" x 12"	4	9	4.66	079916000350	50079916000355

26 Gauge Tee with Collar						
Model No.	A x B x C	Cs	Cs Cb.	Pc Wt. Lbs	UPC Code	Bar Code
TWC066826	6" x 6" x 8"	8	4.13	3.45	079916000558	50079916000553

# WYES - GALVANIZED

## WYE With Collar(WYC)



**WYE  
WITH COLLAR  
(WYC)**

## WYE - Without Collar



**WYE**

### 28 Gauge Wye with Collar

Model No.	A x B x C	Cs	Cs Cb.	Pc Wt. Lbs	UPC Code	Bar Code
WYC034328	3"x4"x 3"	10	2.68	1.6	079916000978	50079916000973
WYC045328	4"x 5"x3"	10	4.13	2.02	079916931654	50079916931659
WYC045428	4"x5"x4"	10	4.13	2.05	079916909264	50079916909269
WYC055428	5"x5"x4"	28	9	2.08	079916909271	50079916909276
WYC056428	5"x6"x4"	10	4.13	2.1	079916909288	50079916909283
WYC066428	6"x6"x4"	10	5.36	2.47	079916909295	50079916909290
WYC077428	7"x7"x4"	5	4.13	2.89	079916909301	50079916909306

### 28 Gauge Wye without Collar

Model No.	A x B x C	Cs	Cs Cb.	Pc Wt. Lbs	UPC Code	Bar Code
WYE033328	3" x 3" x 3"	10	1.13	0.81	079916909134	50079916909139
WYE034328	3" x 4" x 3"	10	1.62	1.19	079916909141	50079916909146
WYE044428	4" x 4" x 4"	10	2.65	1.22	079916909158	50079916909153
WYE055328	5" x 5" x 3"	10	4.13	1.09	079916000831	50079916000836
WYE055528	5" x 5" x 5"	10	4.13	1.85	079916909172	50079916909177
WYE056528	5" x 6" x 5"	10	4.13	1.86	079916000848	50079916000843
WYE066628	6" x 6" x 6"	10	4.13	2.23	079916909189	50079916909184
WYE077728	7" x 7" x 7"	5	4.13	3.28	079916000466	50079916000461

### 28 Gauge Wye without Collar

Model No.	A x B x C	Cs	Cs Cb.	Pc Wt. Lbs	UPC Code	Bar Code
WYE066828	6" x 6" x 8"	10	4.13	3.97	079916000855	50079916000850

### 26 Gauge Wye with Collar

Model No.	A x B x C	Cs	Cs Cb.	Pc Wt. Lbs	UPC Code	Bar Code
WYC045326	4"x5"x3"	10	4.13	2.41	079916000749	50079916000744
WYC045426	4"x5"x4"	10	4.13	2.45	079916932422	50079916932427
WYC046426	4"x6"x4"	10	3.09	2.36	079916932279	50079916932274
WYC055526	5"x5"x5"	10	9	2.99	079916000756	50079916000751
WYC055426	5"x5"x4"	28	9	2.51	079916909318	50079916909313
WYC066626	6"x6"x6"	10	5.36	3.32	079916000787	50079916000782
WYC066426	6"x6"x4"	10	5.36	2.77	079916909325	50079916909320
WYC077726	7"x7"x7"	10	4.13	3.68	079916000800	50079916000805
WYC077426	7"x7"x4"	5	4.13	3.34	079916932361	50079916932366

### 26 Gauge Wye without Collar

Model No.	A x B x C	Cs	Cs Cb.	Pc Wt. Lbs	UPC Code	Bar Code
WYE055526	5" x 5" x 5"	10	4.13	2.23	079916909196	50079916909191
WYE066526	6" x 6" x 5"	10	5.36	2.68	079916909202	50079916909207
WYE066626	6" x 6" x 6"	10	5.36	2.68	079916909219	50079916909214
WYE077726	7" x 7" x 7"	5	4.13	3.08	079916909226	50079916909221
WYE088826	8" x 8" x 8"	4	4.13	5.06	079916909233	50079916909238

### 24 Gauge Wye without Collar

Model No.	A x B x C	Cs	Cs Cb.	Pc Wt. Lbs	UPC Code	Bar Code
WYE1024	10" x 10" x 10"	1	4.13	10.18	079916909240	N/A
WYE1224	12" x 12" x 12"	1	4.01	12.93	079916909257	N/A



**YBR**  
Available upon request.

## PLENUM TAKEOFFS & STRAIGHT TAKE-OFFS



**PT**



**3" Rise**



**RAC**

**4" Height**

### Plenum Take Offs - Unassembled

Model No.	Description	Cs	Cs Cb.	Pc Wt. Lbs	UPC Code	Bar Code
PT088N	8"x 8"x 3" rise	5	4.13	5.24	079916910291	N/A
PT0810N	8"x10"x3" rise	5	4.13	5.64	079916910307	N/A
PT0812N	8"x12"x3" rise	5	4.13	6.04	079916910314	N/A
PT0814N	8"x14"x3" rise	5	4.13	6.43	079916910321	N/A
PT0816N	8"x16"x3" rise	5	4.13	6.83	079916910338	N/A
PT0818N	8"x18"x3" rise	5	4.13	7.23	079916910345	N/A
PT0820N	8"x20"x3" rise	5	4.13	7.63	079916910352	N/A
PT0822N	8"x22"x3" rise	5	4.13	8.03	079916910369	N/A
PT0824N	8"x24"x3" rise	5	4.13	8.56	079916910376	N/A

### Straight Take Offs-Assembled

Model No.	Description	Cs	Cs Cb.	Pc Wt. Lbs	UPC Code	Bar Code
RAC088A	8" X 8"	10	2.65	1.49	079916911908	N/A
RAC0810A	8" X 10"	10	2.65	1.65	079916911915	N/A
RAC0812A	8" X 12"	10	2.65	1.8	079916911922	N/A
RAC0814A	8" X 14"	10	2.65	1.95	079916911939	N/A
RAC0816A	8" X 16"	10	6.49	2.15	079916911946	N/A
RAC0818A	8" X 18"	10	4.13	2.31	079916911953	N/A
RAC0820A	8" X 20"	10	4.13	2.46	079916911960	N/A
RAC0822A	8" X 22"	10	4.13	2.61	079916911977	N/A
RAC0824A	8" X 24"	10	5.36	2.83	079916911984	N/A

**\*\*5" Rise available upon request**



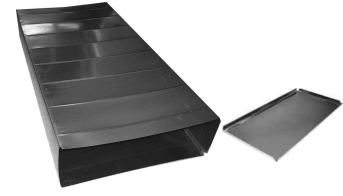


# PLENUMS, COLD AIR DROP KITS, RETURN AIR ELBOWS & DUCT REDUCERS

## Plenums w/ Block End - 2 pieces of duct

Model No.	Description	Cs	Cs Cb.	Pc Wt. Lbs	UPC Code	Bar Code
PLN20134826	20" x 13" x 48"	1	47	21.45	079916003429	N/A
PLN20144826	20" x 14" x 48"	1	47	22.11	079916003436	N/A
PLN20154828	20" x 15" x 48"	1	49.1	27.96	079916003443	N/A
PLN20164826	20" x 16" x 48"	1	51.4	23.5	079916003450	N/A
PLN20184826	20" x 18" x 48"	1	51.36	24.88	079916003467	N/A
PLN20214826	20" x 21" x 48"	1	64	26.96	079916003474	N/A

Plenum is available in Cross broken style



PLN

## Plenums w/ Block End - 4 pieces of duct

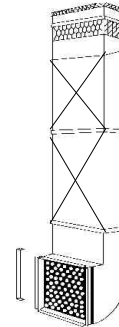
Model No.	Description	Cs	Cs Cb.	Pc Wt. Lbs	UPC Code	Bar Code
PLN4P20134826	20" x 13" x 48"	1	58.2	22.69	079916003481	N/A
PLN4P20144826	20" x 14" x 48"	1	58.2	23.1	079916003498	N/A
PLN4P20164826	20" x 16" x 48"	1	59.9	24.48	079916003504	N/A
PLN4P20184826	20" x 18" x 48"	1	59.9	25.87	079916003511	N/A
PLN4P20214826	20" x 21" x 48"	1	61.2	27.04	079916003528	N/A



PLN4P

## Cold Air Drop Kit

Model No.	Description A X B - A X C	Cs	Cs Cb.	Pc Wt. Lbs	UPC Code	Bar Code
DK2010	20 X 10 Duct- 20 x 16 Filter	1	9.02	26.79	079916761534	use UPC
DK2510	25 X 10 Duct- 25 x 16 Filter	1	9.03	30.12	079916747828	use UPC



DK



RAE



RAECB

Plenum is available in Cross broken style(RAE CB)

## Return Air Elbows 28 Gauge

Model No.	Description A X B - C X D	Cs	Cs Cb.	Pc Wt. Lbs	UPC Code	Bar Code
RAE08221423	8" x 22"-14" x 23"	1	4.07	9.18	079916003689	use UPC
RAE08241423	8" x 24"-14" x 23"	1	4.07	10.02	079916003696	use UPC
RAE10221423	10" x 22"-14" x 23"	1	2.87	10.34	079916003702	use UPC
RAE10241423	10" x 24"-14" x 23"	1	5.36	10.53	079916003719	use UPC



COLD AIR DROP KIT(DK)

## Duct Reducer - Unassembled

Model No.	Description A X B - C X D X 12"	Cs	Cs Cb.	Pc Wt. Lbs	UPC Code	Bar Code
REDU88N	8"X8" - 6" X 8" - 12"	10	1.62	2.24	079916911991	N/A
REDU810N	10"X8" - 8" X 8" - 12"	10	1.62	2.47	079916912004	N/A
REDU812N	12"X8" - 10" X 8" - 12"	10	1.62	2.7	079916912011	N/A
REDU814N	14"X8" - 12" X 8" - 12"	10	1.68	2.93	079916912028	N/A
REDU816N	16"X8" - 14" X 8" - 12"	10	1.62	3.16	079916912035	N/A
REDU818N	18"X8" - 16" X 8" - 12"	10	2.65	3.43	079916912042	N/A
REDU820N	20"X8" - 18" X 8" - 12"	10	9	3.72	079916912059	N/A
REDU822N	22"X8" - 20" X 8" - 12"	10	9	3.94	079916912066	N/A
REDU824N	24"X8" - 22" X 8" - 12"	10	9	4.23	079916912073	N/A
REDU81288N	8"X12" - 8" X 8" - 12"	10	1.67	2.5	079916003788	50079916003783
REDU814810N	8"X14" - 8" X 10" - 12"	10	1.62	2.72	079916003795	50079916003790
REDU816812N	8"X16" - 8" X 12" - 12"	10	1.62	2.95	079916003801	50079916003806
REDU818814N	8"X18" - 8" X 14" - 12"	5	2.65	3.23	079916003818	50079916003813



REDU

**OTHER SIZES AVAILABLE - CALL FOR PRICE & AVAILABILITY**

To Order Call: 1-800-665-4328 or Fax: 905-641-2696

www.deflecto.com

**LONGWAY ELBOWS**  
45 & 90 Degree - Galvanized



**LE 45**

Not Assembled

**Longway Elbow - 45 Degree**  
**Unassembled**

Model No.	Description A X B	Cs	Cs Cb.	Pc Wt. Lbs	UPC Code	Bar Code
LE081045N	8" x 10" X 45d	10	2.65	2.93	079916910987	N/A
LE081245N	8" x 12"	10	2.65	3.39	079916910994	N/A
LE081445N	8" x 14"	10	4.13	4.03	079916911007	N/A
LE081645N	8" x 16"	10	4.13	4.78	079916911014	N/A
LE081845N	8" x 18"	1	4.13	5.3	079916911021	N/A
LE082045N	8" x 20"	1	5.36	6.18	079916911038	N/A
LE082245N	8" x 22"	1	4.13	7.13	079916911045	N/A
LE082445N	8" x 24"	1	9	7.89	079916911052	N/A

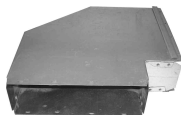


**LE 90**

Not Assembled

**Longway Elbow - 90 Degree**  
**Unassembled**

Model No.	Description A X B	Cs	Cs Cb.	Pc Wt. Lbs	UPC Code	Bar Code
LE081090N	8" x 10"	10	9	4.533	079916910901	N/A
LE081290N	8" x 12"	10	9	5.46	079916910918	N/A
LE081490N	8" x 14"	10	2.65	6.51	079916910925	N/A
LE081690N	8" x 16"	10	0.51	7.63	079916910932	N/A
LE081890N	8" x 18"	1	0.51	8.85	079916910949	N/A
LE082090N	8" x 20"	1	0.51	10.17	079916910956	N/A
LE082290N	8" x 22"	1	0.51	11.83	079916910963	N/A
LE082490N	8" x 24"	1	0.51	13.46	079916910970	N/A



**LE3410**

**Longway Elbow - 90 Degree**  
**Assembled**

Model No.	Description A X B	Cs	Cs Cb.	Pc Wt. Lbs	UPC Code	Bar Code
LE341090	3 1/4" x 10"	10	4.13	2.36	079916911335	N/A

**SHORTWAY ELBOWS**  
45 & 90 Degree - Galvanized



**SE 45**

Not Assembled

**Shortway Elbow - 45 Degree**  
**Unassembled**

Model No.	Description A X B	Cs	Cs Cb.	Pc Wt. Lbs	UPC Code	Bar Code
SE08845N	8" x 8"	10	4.13	2.44	079916911229	N/A
SE081045N	8" x 10"	10	4.13	2.65	079916912236	N/A
SE081245N	8" x 12"	10	1.62	2.85	079916911243	N/A
SE081445N	8" x 14"	10	2.65	3.06	079916911250	N/A
SE081645N	8" x 16"	10	2.65	3.26	079916911267	N/A
SE081845N	8" x 18"	1	4.13	3.47	079916911274	N/A
SE082045N	8" x 20"	1	4.13	3.67	079916911281	N/A
SE082245N	8" x 22"	1	4.13	3.88	079916911298	N/A
SE082445N	8" x 24"	1	4.13	4.08	079916911304	N/A

**Shortway Elbow - 45 Degree**  
**Assembled**

Model No.	Description A X B	Cs	Cs Cb.	Pc Wt. Lbs	UPC Code	Bar Code
SE341045	3 1/4" x 10"	10	4.13	1.28	079916911328	N/A



**SE 90**

Not Assembled

**Shortway Elbow - 90 Degree**  
**Unassembled**

Model No.	Description A X B	Cs	Cs Cb.	Pc Wt. Lbs	UPC Code	Bar Code
SE08890N	8" x 8"	10	4.13	3.92	079916911137	N/A
SE081090N	8" x 10"	10	4.13	4.25	079916911144	N/A
SE081290N	8" x 12"	10	4.13	4.57	079916911151	N/A
SE081490N	8" x 14"	10	4.13	4.89	079916911168	N/A
SE081690N	8" x 16"	10	4.13	5.21	079916911175	N/A
SE081890N	8" x 18"	1	4.13	5.53	079916911182	N/A
SE082090N	8" x 20"	1	4.13	5.85	079916911199	N/A
SE082290N	8" x 22"	1	5.36	6.17	079916911205	N/A



**SE3410**

**Shortway Elbow - 90 Degree**  
**Assembled**

Model No.	Description A X B	Cs	Cs Cb.	Pc Wt. Lbs	UPC Code	Bar Code
SE341090	3 1/4" x 10"	10	4.13	1.49	079916911311	N/A

To Order Call: 1-800-665-4328 or Fax: 905-641-2696

www.deflecto.com

# OVAL PIPE & FITTINGS



**PO**



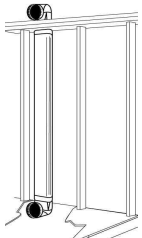
**OSTH**

## OVAL PIPE-30 Gauge Standard

Dia	Model No.	Length	Rack QTY	Cs Cb.	Pc Wt. Lbs	UPC Code	Bar Code
4"	P04530STD	60"	225	64.2	2.38	079916003542	N/A
4"	P0410030STD	100"	275	107	3.96	079916003535	N/A
5"	P05530STD	60"	225	64.2	2.9	079916003559	N/A
5"	P0510030STD	100"	225	107	4.84	079916932538	N/A
6"	P06530STD	60"	200	64.2	3.42	079916003566	N/A
6"	P0610030STD	100"	200	107	5.71	079916932545	N/A
7"	P07530STD	60"	150	64.2	3.96	079916003573	N/A
7"	P0710030STD	100"	150	107	6.6	079916932552	N/A

## OVAL PIPE-30 Gauge

Dia	Model No.	Length	Rack QTY	Cs Cb.	Pc Wt. Lbs	UPC Code	Bar Code
4"	PO410030	100"	275	107	4.76	079916903347	N/A
5"	PO510030	100"	225	107	6.01	079916930961	N/A
6"	PO610030	100"	200	107	7.01	079916903354	N/A
7"	PO710030	100"	150	107	8.1	079916903361	N/A
8"	PO810030	100"	135	107	9.17	079916003580	N/A



ALL OVAL PIPE(PO) COMES IN 'C' LOCK (BUTTON STYLE)

## OVAL ELBOWS Flat & Vertical



**OVELBFT-90**

### Flat Elbows, 90 Degree

Dia	Model No.	Description	Cs	Cs Cb.	Pc Wt. Lbs	UPC Code	Bar Code
5	OVELBFT590	5"x90 flat	12	5.72	0.74	079916003337	50079916003332
6	OVELBFT690	6"x90 flat	12	5.72	0.99	079916003344	50079916003349
7	OVELBFT790	7"x90 flat	12	5.72	1.3	079916003351	50079916003356



**OVELBVT-90**

### Vertical Elbows, 90 Degree

Dia	Model No.	Description	Cs	Cs Cb.	Pc Wt. Lbs	UPC Code	Bar Code
5	OVELBVT590	5"x90 vert.	12	3.5	0.59	079916003375	50079916003370
6	OVELBVT690	6"x90 vert.	12	5.72	0.992	079916003399	50079916003394
7	OVELBVT790	7"x90 vert.	12	5.72	1.3	079916003412	50079916003417



**OVELBVT-45**

### Vertical Elbows, 45 Degree

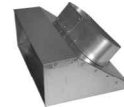
Dia	Model No.	Description	Cs	Cs Cb.	Pc Wt. Lbs	UPC Code	Bar Code
5	OVELBVT545	5"x45 vert.	12	3.5	0.44	079916003368	50079916003363
6	OVELBVT645	6"x45 vert.	12	3.5	0.74	079916003382	50079916003387
7	OVELBVT745	7"x45 vert.	12	5.72	0.91	079916003405	50079916003400



**OEB**

## Oval To Round End Boot

Model No.	Description Oval x Rd	Cs	Cs Cb.	Pc Wt. Lbs	UPC Code	Bar Code
OEB55	5" to 5"	40	9	0.88	079916933030	50079916933035
OEB56	5" to 6"	30	9	1.22	079916003276	50079916003271
OEB66	6" to 6"	8	2.65	1.22	079916003283	50079916003288
OEB67	6" to 7"	8	2.65	1.33	079916003290	50079916003295
OEB77	7" to 7"	6	2.65	1.54	079916003306	50079916003301



**OARB**

## Oval 45 Degree Angle Register Boot

Model No.	Description A x B x Oval	Cs	Cs Cb.	Pc Wt. Lbs	UPC Code	Bar Code
OARB4106	4"x10"x6"	25	9	1.35	079916903378	50079916903373
OARB4126	4"x12"x6"	25	9	1.43	079916903385	50079916903380



**OAB**

## Oval To Round 90 Degree Boot

Model No.	Description Oval x Rd	Cs	Cs Cb.	Pc Wt. Lbs	UPC Code	Bar Code
OAB44	4"x4"	30	4.1	0.54	079916003245	50079916003240
OAB55	5"x5"	30	9	0.9	079916903392	50079916903397
OAB65	6"x5"	25	9	1.02	079916903408	50079916903403
OAB66	6"x6"	25	9	1.06	079916903415	50079916903410
OAB77	7"x7"	20	9	1.47	079916003269	50079916003264



**OSB**

## Oval To Round Straight Boot

Model No.	Description Oval x Rd	Cs	Cs Cb.	Pc Wt. Lbs	UPC Code	Bar Code
OSB66	6"x6"	25	9	1.15	079916003313	50079916003318
OSB77	7"x7"	17	9	1.51	079916003320	50079916003325

# BLACK STOVE PIPE / FITTINGS - 24 GAUGE



**PBP**



**BCAP**

Stove Pipe						
Model No.	Description	Cs	Cs Cb.	Pc Wt. Lbs	UPC Code	Bar Code
PBP62424	6" dia; 24" length	10	0.79	3.15	079916917801	50079916917806
PBP72424	7" dia; 24" length	10	1.07	3.64	079916917832	50079916917837
PBP82424	8" dia; 24" length	10	1.07	4.13	079916917863	50079916917868

Black End Cap - Non-Crimped						
Model No.	Description	Cs	Cs Cb.	Pc Wt. Lbs	UPC Code	Bar Code
BCAP624	6"	10	0.51	0.68	079916918013	50079916918018
BCAP724	7"	10	1.13	0.82	079916918020	50079916918025
BCAP824	8"	10	1.13	0.97	079916918037	50079916918032



**BELB 45**



**BPLUG**

Stove Elbow - 45 Degree Adjustable						
Model No.	Description	Cs	Cs Cb.	Pc Wt. Lbs	UPC Code	Bar Code
BELB64524	6"	4	2.43	1.26	079916931395	50079916931390
BELB74524	7"	6	2.43	1.34	079916931197	50079916931192
BELB84524	8"	4	2.43	1.83	079916931401	50079916931406

Black Plug - Crimped						
Model No.	Description	Cs	Cs Cb.	Pc Wt. Lbs	UPC Code	Bar Code
BPLUG624	6"	10	0.51	0.58	079916918044	50079916918049
BPLUG724	7"	10	1.13	0.72	079916918051	50079916918056
BPLUG824	8"	10	1.13	0.96	079916918068	50079916918063



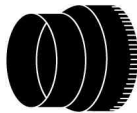
**BELB 90**



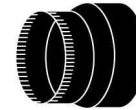
**BTEE**

Stove Elbow - 90 Degree Adjustable						
Model No.	Description	Cs	Cs Cb.	Pc Wt. Lbs	UPC Code	Bar Code
BELB69024	6"	8	2.43	1.44	079916917894	50079916917899
BELB79024	7"	6	2.43	1.94	079916917900	50079916917905
BELB89024	8"	4	2.43	2.53	079916917917	50079916917912

24 Gauge Black Tee with Collar						
Model No.	Description	Cs	Cs Cb.	Pc Wt. Lbs	UPC Code	Bar Code
BTEE624	6" x 6"	5	2.43	2.38	079916917986	50079916917981
BTEE724	7" x 7"	3	2.43	3.5	079916917993	50079916917998
BTEE824	8" x 8"	2	2.43	4.3	079916918006	50079916918001



**BRED**



**BINC**

24 Gauge Black Reducer Crimped*						
Model No.	Description	Cs	Cs Cb.	Pc Wt. Lbs	UPC Code	Bar Code
BRED7624	7" - 6"	10	1.62	1.29	079916917955	50079916917950
BRED8624	8" - 6"	10	1.62	1.48	079916917962	50079916917967
BRED8724	8" - 7"	10	1.62	1.49	079916917979	50079916917974

\*Black Reducers are crimped on the larger end

24 Gauge Black Increaser Crimped*						
Model No.	Description	Cs	Cs Cb.	Pc Wt. Lbs	UPC Code	Bar Code
BINC6724	6" - 7"	10	1.62	1.29	079916917924	50079916917929
BINC6824	6" - 8"	10	1.62	1.49	079916917931	50079916917936
BINC7824	7" - 8"	10	1.62	1.46	079916917948	50079916917943

\*Black Increasers are crimped on the smaller end



**BCAP**



**BELB 45**



**BELB 90**



**BTEE**



**BINC**



**BPLUG**

# ALUMINUM PIPE & ELBOWS

## ALUMINUM PIPE 36" Lengths



ASP

## ALUMINUM ELBOWS 90 Degree - Adjustable



AELB

### .014" Aluminum

Model No.	Description	Bdle	Lock Style	Cs Cb.	Pc Wt. Lbs	UPC Code	Bar Code
ASP033614	3" dia.; 36"length	10	B	0.33	0.55	079916902708	N/A
ASP043614	4" dia.; 36"length	10	B	0.52	0.71	079916902715	N/A

### .022" Aluminum

Model No.	Description	Cs	Cs Cb.	Pc Wt. Lbs	UPC Code	Bar Code
AELB039022	3" diameter	12	1.13	0.285	079916931470	50079916931475
AELB049022	4" diameter	12	1.13	0.351	079916902814	50079916902819
AELB059022	5" diameter	12	6.2	0.5	079916902821	50079916902857
AELB069022	6" diameter	12	4.9	0.58	079916931234	50079916931239

### .022" Aluminum

Model No.	Description	Bdle	Lock Style	Cs Cb.	Pc Wt. Lbs	UPC Code	Bar Code
ASP033622	3" dia.; 36"length	5	B	0.33	0.92	079916902722	N/A
ASP043622	4" dia.; 36"length	5	B	0.52	1.18	079916902739	N/A
ASP053622	5" dia.; 36"length	5	B	0.75	1.44	079916902746	N/A
ASP063622	6" dia.; 36"length	5	B	1.02	1.7	079916931586	N/A

### .025" Aluminum

Model No.	Description	Cs	Cs Cb.	Pc Wt. Lbs	UPC Code	Bar Code
AELB039025	3" diameter	12	1.13	0.3	079916902838	50079916902833
AELB049025	4" diameter	12	1.13	0.37	079916902845	50079916902840
AELB059025	5" diameter	12	2.6	0.54	079916902852	50079916902857
AELB069025	6" diameter	8	9	0.63	079916902869	50079916902864

### .025" Aluminum

Model No.	Description	Bdle	Lock Style	Cs Cb.	Pc Wt. Lbs	UPC Code	Bar Code
ASP033625	3" dia.; 36"length	5	B	0.33	1.01	079916902753	N/A
ASP043625	4" dia.; 36"length	5	B	0.52	1.29	079916902760	N/A
ASP053625	5" dia.; 36"length	5	B	0.75	1.57	079916902777	N/A
ASP063625	6" dia.; 36"length	5	B	1.02	1.85	079916902784	N/A



DE

## ALUMINUM VENT PIPE Light Gauge

Model No.	Description	Bdle	Lock Style	Cs Cb.	Pc Wt. Lbs	UPC Code	Bar Code
DP243	3" x 24" length	24	B	0.61	0.29	079916200170	50079916200175
DP244	4" x 24" length	24	B	0.61	0.35	079916200187	50079916200182
DP244/12	4" x 24" length	12	B	0.61	0.35	079916200187	50079916011790
DP245	5" x 24" length	10	B	0.79	0.62	079916201528	50079916201523
DP246	6" x 24" length	10	B	0.79	0.72	079916201535	50079916501531
DP604	4" x 60" length	12	C	1.8	1.1	079916200361	50079916200366

## VENTING ELBOWS Light Gauge Aluminum 90 deg.

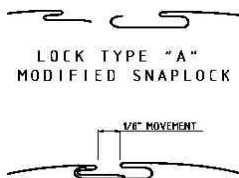
Model No.	Description	Cs	Cs Cb.	Pc Wt. Lbs	UPC Code	Bar Code
DE903	3" X 90 deg	12	1.13	0.206	079916200156	50079916200151
DE904	4" x 90 deg	12	1.13	0.24	079916200163	50079916200168
DE905	5" X 90 deg	32	6.24	0.32	079916201504	50079916201509
DE906	6" x 90 deg	28	6.24	0.39	079916201511	50079916201516



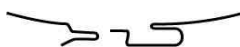
DP

ARR

### Lock Type "A" MODIFIED SNAPLOCK



### Lock Type "B" MODIFIED REEVES SNAPLOCK



## ALUMINUM REPAIR ROLL Gauge .012"

Model No.	Description	Cs	Cs Cb.	Pc Wt. Lbs	UPC Code	Bar Code
ARR159612	15" x 96" length	20	2.44	1.84	079916902876	USE UPC
ARR189612	18" x 96" length	10	2.44	2.19	079916902883	USE UPC

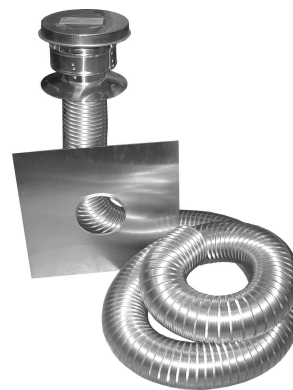
# EASYLINER CHIMNEY LINERS

*For propane or natural gas relining of masonry chimney*



Chimney Liner Kit

LK



LKFP

**Chimney Liner**  
*For gas appliances*

**Kit contains:**

- \* Flexible aluminum liner duct
- \* Rain cap with storm collar & connector all in one pc
- \* Full aluminum flashing with built-in water dam
- \* Masonry sleeve
- \* Bottom connector/pull through fitting
- \* Installation manual
- \* Warranty mail back card

**CUL Listed and UL Listed**

**Fireplace Liner**  
*For natural gas & log fireplaces*

**Kit contains:**

- \* Flexible aluminum liner duct
- \* Rain cap with storm collar & connector all in one pc
- \* Full aluminum flashing with built-in water dam
- \* Installation manual
- \* Warranty mail back card

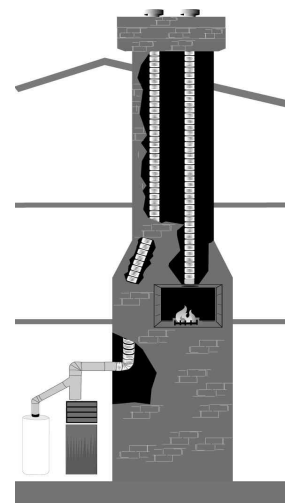
**CUL Listed and UL Listed**

<b>Chimney Liner</b>						
Model No.	Description Dia x length	Cs	Cs Cb.	Pc Wt. Lbs	UPC Code	Bar Code
LK325	3" x 25'	1	2.72	9.31	079916916804	use UPC
LK335	3" x 35'	1	2.7	11.24	079916916811	use UPC
LK425	4" x 25'	1	2.7	11.03	079916916828	use UPC
LK430	4" x 30'	1	3.79	12.43	079916916835	use UPC
LK435	4" x 35'	1	3.8	13.69	079916916842	use UPC
LK440	4" x 40'	1	5.36	15.17	079916003214	use UPC
LK445	4" x 45'	1	5.36	16.43	079916003221	use UPC
LK525	5" x 25'	1	5.4	12.3	079916916859	use UPC
LK5525	5 1/2" x 25'	1	5.4	16.1	079916931210	use UPC
LK530	5" x 30'	1	5.4	13.22	079916916866	use UPC
LK535	5" x 35'	1	5.5	14.77	079916916873	use UPC
LK5535	5 1/2" x 35'	1	5.4	19.5	079916931227	use UPC
LK540	5" x 40'	1	5.4	16.33	079916003238	use UPC
LK625	6" x 25'	1	7.8	16.73	079916916880	use UPC
LK630	6" x 30'	1	7.8	18.58	079916916897	use UPC
LK635	6" x 35'	1	7.8	20.43	079916916903	use UPC
LK725	7" x 25'	1	9	19.98	079916916910	use UPC
LK735	7" x 35'	1	9	24.27	079916916927	use UPC
LK825	8" x 25'	1	9	21.74	079916916934	use UPC
LK835	8" x 35'	1	13	26.61	079916916941	use UPC

<b>Fireplace Liner</b>						
Model No.	Description Dia x length	Cs	Cs Cb.	Pc Wt. Lbs	UPC Code	Bar Code
LKFP325	3" x 25'	1	2.7	8.67	079916916958	use UPC
LKFP335	3" x 35'	1	2.71	10.61	079916916965	use UPC
LKFP425	4" x 25'	1	2.7	10.26	079916916972	use UPC
LKFP435	4" x 35'	1	3.8	12.92	079916916989	use UPC

**Specifications**

- \* Tested to UL and ULC Standards
- \* Maximum temperature usage 245°C/470°F
- \* Fifteen year warranty.





# EASYLINER CHIMNEY LINERS

*For propane or natural gas relining of masonry chimneys*

CHIMNEY LINER EXTENSIONS						
Aluminum w/Connector						
Adds length to Chimney Liners-(Not to Exceed 50 Feet)						
Model No.	Description Dia x length	Cs	Cs Cb.	Pc Wt. Lbs	UPC Code	Bar Code
LF310	3" x 10'	1	2.65	3.37	079916003061	N/A
LF325	3" x 25'	1	2.71	7.53	079916916699	N/A
LF335	3" x 35'	1	2.71	9.47	079916930732	N/A
LF410	4" x 10'	1	2.65	4.01	079916916996	N/A
LF425	4" x 25'	1	2.71	9.05	079916917009	N/A
LF430	4" x 30'	1	3.79	10.44	079916932590	N/A
LF435	4" x 35'	1	3.79	11.701	079916917016	N/A
LF510	5" x 10'	1	2.71	5.16	079916917030	N/A
LF525	5" x 25'	1	5.36	10.32	079916917047	N/A
LF535	5" x 35'	1	6.49	15.04	079916917054	N/A
LF610	6" x 10'	1	2.71	6.63	079916917078	N/A
LF625	6" x 25'	1	6.49	13.5	079916917085	N/A
LF635	6" x 35'	1	9	16.92	079916917092	N/A
LF710	7" x 10'	1	5.36	7.43	079916917108	N/A
LF725	7" x 25'	1	9	17.78	079916917115	N/A
LF735	7" x 35'	1	9	21.34	079916917122	N/A
LF810	8" x 10'	1	5.36	8.11	079916917139	N/A
LF825	8" x 25'	1	13.1	18.62	079916917146	N/A
LF835	8" x 35'	1	13.1	23.5	079916917153	N/A



LF

CHIMNEY LINER EXTENSIONS						
Bulk - without Connector						
Model No.	Description Dia x length	Cs	Cs Cb.	Pc Wt. Lbs	UPC Code	Bar Code
LF350BK	3" x 50' bulk	1	3.79	15.39	079916916743	N/A
LF450BK	4" x 50' bulk	1	5.46	18.33	079916916736	N/A
LF550BK	5" x 50' bulk	1	7.83	21.27	079916916729	N/A
LF650BK	6" x 50' bulk	1	13.1	24.22	079916916712	N/A



LF...BK

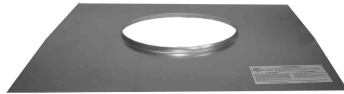
B- Vent Connector						
To Connect B-Vent to Flex						
Model No.	Diameter	Cs	Cs Cb.	Pc Wt. Lbs	UPC Code	Bar Code
BVA3	3"	4	0.45	0.24	079916200507	50079916200502
BVA4	4"	4	0.47	0.32	079916200514	N/A
BVA5	5"	4	1.13	0.37	079916200521	N/A
BVA6	6"	4	0.79	0.25	079916200538	N/A



BVA



## EASYLINER CHIMNEY LINER ACCESSORIES



LFL



LCS

Liner Kit Flashings - Aluminum						
Model No.	Diameter	Cs	Cs Cb.	Pc Wt. Lbs	UPC Code	Bar Code
LFL04B	4"	1	1.05	0.67	079916003108	N/A
LFL05B	5"	1	1.08	0.67	079916003115	N/A
LFL06B	6"	1	1.05	0.67	079916003122	N/A

Liner Kit Couplings - Aluminum						
Model No.	Diameter	Cs	Cs Cb.	Pc Wt. Lbs	UPC Code	Bar Code
LCS04B	4"	1	1.13	0.44	079916003016	N/A
LCS05B	5"	1	1.13	0.54	079916003023	N/A
LCS06B	6"	1	1.62	0.64	079916003030	N/A



LGSM



LRC

Liner Kit Masonry Sleeves-Galvanized						
Model No.	Diameter	Cs	Cs Cb.	Pc Wt. Lbs	UPC Code	Bar Code
LGMS04B	4"	1	1.13	0.52	079916003160	N/A
LGMS05B	5"	1	1.62	0.62	079916003177	N/A
LGSM06B	6"	1	1.62	0.71	079916003184	N/A

Chimney Liner Raincap - Aluminum						
Model No.	Diameter	Cs	Cs Cb.	Pc Wt. Lbs	UPC Code	Bar Code
LRC3	3"	1	1.13	1.75	079916917160	N/A
LRC4	4"	1	1.13	1.87	079916917177	N/A
LRC5	5"	1	1.13	2.14	079916917184	N/A
LRC6	6"	1	1.13	2.31	079916917191	N/A
LRC7	7"	1	1.13	2.53	079916917207	N/A
LRC8	8"	1	1.13	2.63	079916917214	N/A

Note: Component sizes available  
from 3" to 8" diameter.

## NON-INSULATED DUCT

### SUPURR-FLEX® - UL LISTED CLOTHES DRYER TRANSITION DUCT *Pure aluminum, multi-layered, flexible metallic duct*

Model Number	Packed	Description	Cs Pk.	Cs Cb.	Psc Wt	Cs Wt	UPC Code 0 79916	Bar Code
F0405B	carton	4" x 5' Supurr-Flex® duct	6	0.6	0.51	4.0	43045 4	5 00 79916 43045 9
F0405B/30	carton	4" x 5' Supurr-Flex® duct	30	2.2	0.51	15.2	43045 4	5 00 79916 01015 1
F0408B	carton	4" x 8' Supurr-Flex® duct	6	0.6	0.7	6.0	43048 5	5 00 79916 43048 0
F0408B/30	carton	4" x 8' Supurr-Flex® duct	30	2.2	0.7	18.9	43048 5	5 00 79916 01016 8
F0405MSX/30	bag	4" x 5' Supurr-Flex® duct w/2 <b>spring tension clamps</b>	30	2.4	0.53	19.0	43314 1	5 00 79916 43314 6
FO408MSX/30	bag	4" x 8' Supurr-Flex® duct w/2 <b>spring tension clamps</b>	30	2.4	0.71	25.0	43315 8	5 00 79916 43315 3
FC0405B	carton	4" x 5' Supurr-Flex® duct w/2 <b>plastic clamps</b>	6	0.6	0.52	5.0	43145 1	5 00 79916 43145 6
FC0408B	carton	4" x 8' Supurr-Flex® duct w/2 <b>plastic clamps</b>	6	0.6	0.73	6.0	43148 2	5 00 79916 43148 7
F0420B	carton	4" x 20' Supurr-Flex® duct	3	0.5	2.1	6.3	43142 0	5 00 79916 43142 5
F0425	carton	4" x 25' Supurr-Flex® duct	1	0.3	2.56	3.0	43001 0	use UPC
F0450	carton	4" x 50' Supurr-Flex® duct	1	0.6	4.59	5.0	43004 1	use UPC

Produced to UL 2158A Standard



**FO408MSX Shown**  
UL Listed Clothes  
Dryer Transition Duct  
on lengths of 8' or less

### SUPURR-DUCT® - UL LISTED CLOTHES DRYER TRANSITION DUCT *Pure aluminum, Semi rigid flexible duct*

Model Number	Packed	Description	Cs Pk.	Cs Cb.	Psc Wt	Cs Wt	UPC Code 0 79916	Bar Code
FAUL0405	carton	4" x 5' Supurr-Duct® Semi rigid aluminum dryer duct	4	1.4	1.12	4.5	00673 4	5 00 79916 00673 9
FAUL0408	carton	4" x 8' Supurr-Duct® Semi rigid aluminum dryer duct	4	1.4	1.9	7.7	00674 1	5 00 79916 00674 6
FCAUL0405	carton	4" x 5' Supurr-Duct® Semi rigid alum.duct c/w 2 <b>clamps</b>	4	1.4	1.3	5.2	00675 8	5 00 79916 00675 3
FCAUL0408	carton	4" x 8' Supurr-Duct® Semi rigid alum.duct c/w 2 <b>clamps</b>	4	1.4	2	8.0	00676 5	5 00 79916 00676 0

Produced to UL 2158A Standard



**FCAUL0405 Shown**  
UL Listed Clothes  
Dryer Transition Duct  
on lengths of 8' or less

### SUPURR-FLEX® - UL LISTED CLASS 1 AIR CONNECTOR *Pure aluminum, multi-layered, flexible metallic duct*

Model Number	Packed	Description	Cs Pk.	Cs Cb.	Psc Wt	Cs Wt.	UPC Code 0 79916	Bar Code
FUL0325	carton	3" x 25' Supurr-Flex® duct; UL 181	1	0.3	1.9	2.0	43500 8	use UPC
FUL0425	carton	4" x 25' Supurr-Flex® duct; UL 181	1	0.3	2.44	3.0	43501 5	use UPC
FUL0525	bulk	5" x 25' Supurr-Flex® duct; UL 181	1	0.5	2.9	3.0	43502 2	use UPC
FUL0625	bulk	6" x 25' Supurr-Flex® duct; UL 181	1	0.5	2.2	3.0	43503 9	use UPC
FUL0825	bulk	8" x 25' Supurr-Flex® duct; UL 181	1	0.8	2.6	3.2	43505 3	use UPC

**Larger Sizes Available - Call for Pricing**



**FUL**  
UL Listed  
UL Listed 181 Class 1  
Air Connector on  
installments of 14' or less

### METALLIC DUCT - UL LISTED 181 CLASS 1 AIR CONNECTOR *Two-ply metallic duct with scrim*

Model Number	Packed	Description	Cs Pk.	Cs Cb.	Psc Wt	Cs Wt	UPC Code 0 79916	Bar Code
FLS0325	bulk	3" X 25' metallic duct, UL 181	1	0.4	1.8	2.0	91290 5	use UPC
FLS0425	bulk	4" X 25' metallic duct, UL 181	1	0.4	2.2	2.3	91291 2	use UPC
FLS0450	bulk	4" X 50' metallic duct, UL 181	1	0.7	4.3	4.5	91281 3	use UPC
FLS0525	bulk	5" X 25' metallic duct, UL 181	1	0.9	2.8	3.0	91292 9	use UPC
FLS0625	bulk	6" X 25' metallic duct, UL 181	1	0.9	2.1	2.5	91293 6	use UPC
FLS0725	bulk	7" X 25' metallic duct, UL 181	1	1.2	2.9	3.5	91294 3	use UPC
FLS0825	bulk	8" X 25' metallic duct, UL 181	1	1.2	2.9	3.6	91295 0	use UPC
FLS1025	bulk	10" X 25' metallic duct, UL 181	1	2.3	4.8	5.5	91296 7	use UPC
FLS1225	bulk	12" X 25' metallic duct, UL 181	1	4.9	5.9	6.1	91297 4	use UPC
FLS1425	bulk	14" X 25' metallic duct, UL 181	1	6.5	6.6	6.7	91298 1	use UPC
FLS1625	bulk	16" X 25' metallic duct, UL 181	1	2.6	8.7	8.9	000107	use UPC



**FLS**  
UL Listed  
UL Listed 181 Class 1  
Air Connector on  
installments of 14' or less

**UL 181 Class 1 Surface Burning Characteristics:**

Maximum Flame Spread: 25  
Maximum Smoke Developed: 50

To Order Call: 1-800-665-4328 or Fax: 905-641-2696



## NON-INSULATED DUCT

### METALLIC DUCT - UL LISTED 181 CLASS 1 AIR CONNECTOR

*Two-ply metallic duct without scrim*

Model Number	Packed	Description	Cs Pk.	Cs Cb.	Psc Wt	Cs Wt	UPC Code 0 79916	Bar Code
FL0325	bulk	3" X 25' metallic duct, no scrim, UL 181	1	0.32	1.7	1.8	93024 4	use UPC
FL0350	bulk	3" X 50' metallic duct, no scrim, UL 181	1	0.61	3.4	3.5	93164 7	use UPC
FL0425	bulk	4" X 25' metallic duct, no scrim, UL 181	1	0.32	2.2	2.3	93025 1	use UPC
FL0450	bulk	4" X 50' metallic duct, no scrim, UL 181	1	0.48	2.1	2.2	93050 3	use UPC
FL0525	bulk	5" X 25' metallic duct, no scrim, UL 181	1	0.79	2.6	2.8	93026 8	use UPC
FL0625	bulk	6" X 25' metallic duct, no scrim, UL 181	1	1.13	2.6	2.7	93027 5	use UPC
FL0725	bulk	7" X 25' metallic duct, no scrim, UL 181	1	1.07	2.7	2.8	93043 5	use UPC
FL0825	bulk	8" X 25' metallic duct, no scrim, UL 181	1	1.07	2.9	3.0	93029 9	use UPC
FL1025	bulk	10" X 25' metallic duct, no scrim, UL 181	1	2.13	4.6	4.7	93033 6	use UPC
FL1225	bulk	12" X 25' metallic duct, no scrim, UL 181	1	4.93	5.9	6.0	93034 3	use UPC
FL1425	bulk	14" X 25' metallic duct, no scrim, UL 181	1	6.49	6.6	6.7	93035 0	use UPC
FL1625	bulk	16" X 25' metallic duct, no scrim, UL 181	1	4.9	7.3	7.4	00007 7	use UPC
FL1825	bulk	18" X 25' metallic duct, no scrim, UL 181	1	6.49	10	10.1	000084	use UPC



**FL**  
UL LISTED

UL Listed 181 Class 1  
**Air Connector** on  
installments of 14' or less  
Class 1:  
Maximum Flame Spread: 25  
Maximum Smoke Developed: 50



AM,MAC



AM46

### SEMI-RIGID FLEXIBLE ALUMINUM DUCT - compressed

Model Number	Packed	Description	Cs Pk.	Cs Cb.	Psc Wt	Cs Wt	UPC Code 0 79916	Bar Code
<b>COLLAR ENDS</b>								
AM46	bulk	4" x 6' duct with male & female collars	12	2.99	0.68	8.2	19951 1	5 00 79916 19951 6
AM48	bag	4" x 8' duct with male & female collars	9	2.99	0.79	7.2	19952 8	5 00 79916 19952 3
MAC36024/2	chip	4" x 2' duct with male & female collars	2	0.33	0.9	3.0	03108 8	5 00 79916 03108 3
AM42	bulk	4" x 2' duct with male & female collars	12	0.5	0.32	3.8	00156 2	5 00 79916 00156 7
AM41	bulk	4" x 1' duct with male & female collars	16	0.5	0.23	2.8	00149 4	5 00 79916 00149 9
AM32	bulk	3" x 2' duct with male & female collars	12	0.5	0.25	3.0	00177 7	5 00 79916 00177 2
AM38C	bulk	3" x 8' duct with male & female collars	16	2.99	0.7	10.0	00580 5	5 00 79916 00580 0



AM,MAC

### SEMI-RIGID FLEXIBLE ALUMINUM DUCT - compressed

Model Number	Packed	Description	Cs Pk.	Cs Cb.	Psc Wt	Cs Wt	UPC Code 0 79916	Bar Code
<b>PLAIN ENDS</b>								
A038/9	bulk	3" x 8' duct	9	2.99	0.74	6.7	42404 0	5 00 79916 42403 8
A038/16	bulk	3" x 8' duct	16	2.99	0.66	10.6	42404 0	5 00 79916 42404 5
A038/25	bulk	3" x 8' duct	25	5.05	0.59	14.8	42404 0	5 00 79916 01121 9
A0320/18	bulk	3" x 20' duct	18	14.8	1.6	30.0	42439 2	5 00 79916 42439 7
A0325/5	bulk	3" x 25' duct	5	5.6	2.2	13.0	42411 8	5 00 79916 42411 3
A045/9	bulk	4" x 5' duct	9	3	0.55	5.0	42418 7	5 00 79916 42418 2
A048/9	bulk	4" x 8' duct	9	3	0.91	8.3	42400 2	5 00 79916 42400 7
A048/16	bulk	4" x 8' duct	16	5	0.48	12.6	42400 2	5 00 79916 01049 6
A048/40	bulk	4" x 8' duct	40	11.2	0.6	33.0	42400 2	5 00 79916 01171 4
A048X/40	bag	4" x 8' duct	40	11.2	0.6	33.0	42402 6	5 00 79916 01019 9
A048MX/9	bag	4" x 8' duct with 2 metal worm drive clamps(MC4)	9	3	0.91	9.0	42401 9	5 00 79916 42401 4
A0410/40	bulk	4" x 10' duct	40	14.8	0.99	41.0	42448 4	5 00 79916 42448 9
A0425/3	bulk	4" x 25' duct	3	4.1	3.13	9.3	42412 5	5 00 79916 42412 0
A058/5	bulk	5" X 8' duct	5	3	1.23	6.2	42406 4	5 00 79916 42406 9
A068/4	bulk	6" x 8' duct	4	3.3	1.7	4.8	42407 1	5 00 79916 42407 6
A078/5	bulk	7" x 8' duct	5	10.7	1.8	9.0	42408 8	5 00 79916 42408 3
A088/4	bulk	8" x 8' duct	4	3	2.3	9.3	42409 5	5 00 79916 42409 0



AO



AO...MX

For UL Listed Semi Rigid Duct see pages 21 & 23b

To Order Call: 1-800-665-4328 or Fax: 905-641-2696

www.deflecto.com

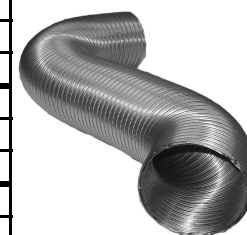
# NON-INSULATED DUCT

## SEMI-RIGID FLEXIBLE ALUMINUM DUCT - compressed

Model Number	Packed	Description	Cs	Cs	Psc	Cs	UPC Code	Bar Code
			Pk.	Cb.	Wt	Wt	0 79916	
<b>CRIMPED END</b>								
A038C/16	bulk	3" x 8' duct,Crimped end	16	3.2	0.6	11	42421 7	5 00 79916 42421 2
A048C/9	bulk	4" x 8' duct,Crimped end	9	3.2	0.9	9	42420 0	5 00 79916 42420 5
A048C/16	bulk	4" x 8' duct,Crimped end	16	5.05	0.48	12.6	42441 5	5 00 79916 42441 0
A068C/4	bulk	6" x 8' duct,Crimped end	4	3.2	1.7	7	42423 1	5 00 79916 42423 6
<b>PLAIN END - Boxed</b>								
AFD0310	bulk	3" x 10' duct,Boxed	52	13	0.8	41.5	91307 0	5 00 79916 91307 2
AFD0410	bulk	4" x 10' duct,Boxed	30	13	1.08	32.6	91308 7	5 00 79916 91308 2
AFD0510	bulk	5" x 10' duct,Boxed	16	13	1.4	23.5	91309 4	5 00 79916 91309 5
AFD0610	bulk	6" x 10' duct,Boxed	14	13	1.9	27.8	91310 0	5 00 79916 91310 5
<b>PLAIN END - Unboxed</b>								
AFD0310BLK	bulk	3" x 10' duct	1	0.17	0.68	0.69	93290 3	N/A
AFD0410BLK	bulk	4" x 10' duct	1	0.3	0.89	0.9	93291 0	N/A
AFD0510BLK	bulk	5" x 10' duct	1	0.52	1.1	1.11	93292 7	N/A
AFD0610BLK	bulk	6" x 10' duct	1	0.75	1.5	1.59	93293 4	N/A
AFD0710BLK	bulk	7" x 10' duct	1	0.91	1.8	1.84	92602 5	N/A
AFD0810BLK	bulk	8" x 10' duct	1	1.1	2.08	2.09	92614 8	N/A
AFD1010BLK	bulk	10" x 10' duct	1	2.3	2.5	2.6	03228 3	N/A
AFD1210BLK	bulk	12" x 10' duct	1	3.3	3.09	3.1	03229 0	N/A
AFD1410BLK	bulk	14" x 10' duct	1	4.7	3.6	3.61	03230 6	N/A
AFD1610BLK	bulk	16" x 10' duct	1	6.2	4.1	4.11	03231 3	N/A
AFD0325	bulk	3" X 25' duct	1	2.7	4.08	4.09	00095 4	N/A
AFD0425	bulk	4" x 25' duct	1	2.7	4.5	4.6	92601 8	N/A
AFD0525	bulk	5" x 25' duct	1	2.7	4.8	4.82	03227 6	N/A



**AO...C**



**AFD...BLK**

For UL Listed Semi Rigid Duct see pages 21 & 23b

## VINYL HOSE - Not recommended for clothes dryer venting

Model Number	Packed	Description	Cs	Cs	Psc	Cs	UPC Code	Bar Code
			Pk.	Cb.	Wt	Wt	0 79916	
PH38W	bag	3" x 8' white vinyl hose	12	1.5	0.56	7	41006 7	5 00 79916 41006 2
PH45W	bag	4" x 5' white vinyl hose	12	0.8	0.45	6	41001 2	5 00 79916 41001 7
PH48W	bag	4" x 8' white vinyl hose	12	1.2	0.63	8	41002 9	5 00 79916 41002 4
CPH38W	bag	3" x 8' white vinyl hose, 2 plastic clamps	12	1.5	0.6	8	41005 0	5 00 79916 41005 5
CPH45W	bag	4" x 5' white vinyl hose, 2 plastic clamps	12	0.8	0.56	6	41003 6	5 00 79916 41003 1
CPH48W	bag	4" x 8' white vinyl hose, 2 plastic clamps	12	1.2	0.66	9	41004 3	5 00 79916 41004 8
PH420W	bag	4" x 20' white vinyl hose	6	1.2	1.6	10	40020 4	5 00 79916 40020 9
BH320W	bulk	3" x 20' white vinyl hose	1	0.3	1.9	2	41501 7	use UPC
BH350W	bulk	3" x 50' white vinyl hose	1	0.4	3.2	3.3	41502 4	use UPC
BH420W	bulk	4" x 20' white vinyl hose	1	0.3	1.8	2	41503 1	use UPC
BH450W	bulk	4" x 50' white vinyl hose	1	0.5	3.9	4	41504 8	use UPC



**PH,BH**



**CPH**

## RECREATIONAL VEHICLE SEWER HOSE - Blue

Model Number	Packed	Description	Cs	Cs	Psc	Cs	UPC Code	Bar Code
			Pk.	Cb.	Wt	Wt	0 79916	
SWR310	bag	3"diameter x 10' blue	6	0.6	0.8	5	41601 4	5 00 79916 41601 9
SWR320	bag	3"diameter x 20' blue	6	0.7	1.3	8	41602 1	5 00 79916 41602 6



**SWR**

# NON-INSULATED DUCT-UL 181 Listed Class 0



## SEMI-RIGID FLEXIBLE ALUMINUM DUCT - Compressed, UL listed

Model Number	Packed	Description	Cs Pk.	Cs Cb.	Psc Wt	Cs Wt	UPC Code 0 79916	Bar Code
<b>CRIMPED ON ONE END</b>								
A0UL036C	bulk	3" x 6' duct,Crimped end,UL 181,Class 0	9		1.01	9.1	00725 0	5 00 79916 00725 5
A0UL038C	bulk	3" x 8' duct,Crimped end,UL 181,Class 0	9		1.3	11.8	00726 7	5 00 79916 00726 2
A0UL0310C	bulk	3" x 10' duct,Crimped end,UL 181,Class 0	4		1.71	6.9	00727 4	5 00 79916 00727 9
A0UL046C	bulk	4" x 8' duct,Crimped end,UL 181,Class 0	9		1.4	12.7	00728 1	5 00 79916 00728 6
A0UL048C	bulk	4" x 8' duct,Crimped end,UL 181,Class 0	9		1.75	15.8	00729 8	5 00 79916 00729 3
A0UL0410C	bulk	4" x 10' duct,Crimped end,UL 181,Class 0	4		2.21	8.9	00732 8	5 00 79916 00732 3
A0UL058C	bulk	5" x 8' duct,Crimped end,UL 181,Class 0	4		2.28	9.2	00733 5	5 00 79916 00733 0
A0UL0510C	bulk	5" x 10' duct,Crimped end,UL 181,Class 0	4		2.8	11.2	00734 2	5 00 79916 00734 7
A0UL068C	bulk	6" x 8' duct,Crimped end,UL 181,Class 0	4		2.73	11	00735 9	5 00 79916 00735 4
A0UL0610C	bulk	6" x 10' duct,Crimped end,UL 181,Class 0	4		3.45	13.9	00736 6	5 00 79916 00736 1
A0UL078C	bulk	7" x 8' duct,Crimped end,UL 181,Class 0	4		3.37	13.5	00737 3	5 00 79916 00737 8
A0UL0710C	bulk	7" x 10' duct,Crimped end,UL 181,Class 0	2		3.5	7.1	00738 0	5 00 79916 00738 5
A0UL088C	bulk	8" x 8' duct,Crimped end,UL 181,Class 0	1		4.09	4.1	00739 7	5 00 79916 00739 2
A0UL0810C	bulk	8" x 10' duct,Crimped end,UL 181,Class 0	1		4.61	4.9	00740 3	5 00 79916 00740 8
A0UL108C	bulk	10" x 8' duct,Crimped end,UL 181,Class 0	1		5.4	5.4	00741 0	5 00 79916 00741 5
A0UL1010C	bulk	10" x 10' duct,Crimped end,UL 181,Class 0	1		6.27	6.3	00742 7	5 00 79916 00742 2
<b>PLAIN ENDS</b>								
A0UL036	bulk	3" x 6' duct,Plain end,UL 181,Class 0	9		1.01	9.1	00679 6	5 00 79916 00679 1
A0UL038	bulk	3" x 8' duct,Plain end,UL 181,Class 0	9		1.3	11.8	00678 9	5 00 79916 00678 4
A0UL0310	bulk	3" x 10' duct,Plain end,UL 181,Class 0	4		1.71	6.9	00677 2	5 00 79916 00677 7
A0UL046	bulk	4" x 8' duct,Plain end,UL 181,Class 0	9		1.4	12.7	00682 6	5 00 79916 00682 1
A0UL048	bulk	4" x 8' duct,Plain end,UL 181,Class 0	9		1.75	15.8	00681 9	5 00 79916 00681 4
A0UL0410	bulk	4" x 10' duct,Plain end,UL 181,Class 0	4		2.21	8.9	00680 2	5 00 79916 00680 7
A0UL058	bulk	5" x 8' duct,Plain end,UL 181,Class 0	4		2.28	9.2	00684 0	5 00 79916 00684 5
A0UL0510	bulk	5" x 10' duct,Plain end,UL 181,Class 0	4		2.79	11.2	00683 3	5 00 79916 00683 8
A0UL068	bulk	6" x 8' duct,Plain end,UL 181,Class 0	4		2.73	11	00686 4	5 00 79916 00686 9
A0UL0610	bulk	6" x 10' duct,Plain end,UL 181,Class 0	4		3.45	13.9	00685 7	5 00 79916 00685 2
A0UL078	bulk	7" x 8' duct,Plain end,UL 181,Class 0	4		3.37	13.5	00688 8	5 00 79916 00688 3
A0UL0710	bulk	7" x 10' duct,Plain end,UL 181,Class 0	2		3.5	7.1	00687 1	5 00 79916 00687 6
A0UL088	bulk	8" x 8' duct,Plain end,UL 181,Class 0	1		4.09	4.1	00690 1	5 00 79916 00690 6
A0UL0810	bulk	8" x 10' duct,Plain end,UL 181,Class 0	1		4.84	4.9	00689 5	5 00 79916 00689 0
A0UL108	bulk	10" x 8' duct,Plain end,UL 181,Class 0	1		5.35	5.4	00692 5	5 00 79916 00692 0
A0UL1010	bulk	10" x 10' duct,Plain end,UL 181,Class 0	1		6.27	6.3	00691 8	5 00 79916 00691 3
<b>GALVANIZED COLLAR ENDS</b>								
A0UL036GC	bulk	3" x 6' duct,Galv. Collars,UL 181,Class 0	9		1.17	10.6	00693 2	5 00 79916 00693 7
A0UL038GC	bulk	3" x 8' duct,Galv.Collars,UL 181,Class 0	9		1.38	12.5	00694 9	5 00 79916 00694 4
A0UL0310GC	bulk	3" x 10' duct,Galv.Collars,UL 181,Class 0	4		1.88	7.6	00695 6	5 00 79916 00695 1
A0UL046GC	bulk	4" x 6' duct,Galv. Collars,UL 181,Class 0	9		1.58	14.3	00696 3	5 00 79916 00696 8
A0UL048GC	bulk	4" x 8' duct,Galv.Collars,UL 181,Class 0	9		1.96	17.7	00697 0	5 00 79916 00697 5
A0UL0410GC	bulk	4" x 10' duct,Galv.Collars,UL 181,Class 0	4		2.42	9.7	00698 7	5 00 79916 00698 2
A0UL058GC	bulk	5" x 8' duct,Galv.Collars,UL 181,Class 0	4		2.54	10.2	00699 4	5 00 79916 00699 9
A0UL0510GC	bulk	5" x 10' duct,Galv.Collars,UL 181,Class 0	4		3.06	12.4	00706 9	5 00 79916 00706 4
A0UL068GC	bulk	6" x 8' duct,Galv.Collars,UL 181,Class 0	4		3.05	12.3	00717 5	5 00 79916 00717 0
A0UL0610GC	bulk	6" x 10' duct,Galv.Collars,UL 181,Class 0	4		3.77	15.1	00718 2	5 00 79916 00718 7
A0UL078GC	bulk	7" x 8' duct,Galv.Collars,UL 181,Class 0	4		3.74	15	00719 9	5 00 79916 00719 4
A0UL0710GC	bulk	7" x 10' duct,Galv.Collars,UL 181,Class 0	2		4.2	8.4	00720 5	5 00 79916 00720 0
A0UL088GC	bulk	8" x 8' duct,Galv.Collars,UL 181,Class 0	1		5.9	5.9	00721 2	5 00 79916 00721 7
A0UL0810GC	bulk	8" x 10' duct,Galv.Collars,UL 181,Class 0	1		5.26	5.3	00722 9	5 00 79916 00722 4
A0UL108GC	bulk	10" x 8' duct,Galv.Collars,UL 181,Class 0	1		5.87	5.87	00723 6	5 00 79916 00723 1
A0UL1010GC	bulk	10" x 10' duct,Galv.Collars,UL 181,Class 0	1		6.8	6.8	00724 3	5 00 79916 00724 8



A0UL...C



A0UL



A0UL...GC



**UL 181 Class 0 Surface Burning Characteristics: Flame Spread/Smoke Developed 0/0**  
See Installation Instruction Sheet.

To Order Call: 1-800-665-4328 or Fax: 905-641-2696

# INSULATED DUCT



## INSULATED DUCT - R 4.2 UL LISTED 181 CLASS 1 AIR DUCT

Model Number	Packed	Description	Cs	Cs	Psc Wt	Cs	UPC Code	Bar Code
			Pk.	Cb.		Wt	0 79916	
ID0325	carton	3" x 25' insulated duct	1	1.01	4.73	6.0	91328 5	Use UPC
ID0425	carton	4" x 25' insulated duct	1	1.01	6.06	7.0	20113 9	Use UPC
ID0525	carton	5" x 25' insulated duct	1	1.30	7.10	8.0	20120 7	Use UPC
ID0625	carton	6" x 25' insulated duct	1	1.40	7.80	8.0	20114 6	Use UPC
ID0725	carton	7" x 25' insulated duct	1	2.10	9.20	9.3	20121 4	Use UPC
ID0825	carton	8" x 25' insulated duct	1	2.05	10.10	10.5	20115 3	Use UPC
ID0925	carton	9" x 25' insulated duct	1	4.90	13.80	15.0	91334 9	Use UPC
ID1025	carton	10" x 25' insulated duct	1	3.00	14.00	15.0	20118 4	Use UPC
ID1225	carton	12" x 25' insulated duct	1	3.75	16.80	16.0	20119 1	Use UPC
ID1425	carton	14" x 25' insulated duct	1	6.50	19.40	19.5	93204 0	Use UPC
ID1625	carton	16" x 25' insulated duct	1	6.50	23.90	24.0	93224 8	Use UPC
<b>SILVER METALIZED JACKET</b>								
SD0425	carton	4" x 25' insulated duct	1	1.00	5.70	6.0	93098 5	Use UPC
SD0525	carton	5" x 25' insulated duct	1	1.00	7.03	8.0	93099 2	Use UPC
SD0625	carton	6" x 25' insulated duct	1	1.40	7.30	8.0	93100 5	Use UPC
SD0725	carton	7" x 25' insulated duct	1	2.10	8.60	9.0	93101 2	Use UPC
SD0825	carton	8" x 25' insulated duct	1	2.10	9.50	10.0	93097 8	Use UPC
SD1025	carton	10" x 25' insulated duct	1	4.90	13.30	15.0	93091 6	Use UPC
SD1225	carton	12" x 25' insulated duct	1	4.90	16.00	16.1	93102 9	Use UPC



ID



SD

Larger Sizes Available - Call for Pricing



## INSULATED DUCT - R 6 UL LISTED 181 CLASS 1 AIR DUCT

Model Number	Packed	Description	Cs	Cs	Psc Wt	Cs	UPC Code	Bar Code
			Pk.	Cb.		Wt	0 79916	
ID0425R6	carton	4" x 25' insulated duct	1	1.00	6.50	7.0	20122 1	Use UPC
ID0525R6	carton	5" x 25' insulated duct	1	1.40	8.10	8.2	20123 8	Use UPC
ID0625R6	carton	6" x 25' insulated duct	1	1.40	8.60	10.0	20124 5	Use UPC
ID0725R6	carton	7" x 25' insulated duct	1	2.10	9.50	11.0	20125 2	Use UPC
ID0825R6	carton	8" x 25' insulated duct	1	2.10	11.20	12.0	20126 9	Use UPC
ID0925R6	carton	9" x 25' insulated duct	1	4.90	14.30	15.0	00272 9	Use UPC
ID1025R6	carton	10" x 25' insulated duct	1	4.90	15.20	16.0	20127 6	Use UPC
ID1225R6	carton	12" x 25' insulated duct	1	4.90	17.80	17.0	20128 3	Use UPC
ID1425R6	carton	14" x 25' insulated duct	1	6.50	19.90	20.0	00273 6	Use UPC
ID1625R6	carton	16" x 25' insulated duct	1	8.40	24.50	25.0	00275 0	Use UPC
<b>SILVER METALIZED JACKET</b>								
SD0425R6	carton	4" x 25' insulated duct	1	1.30	6.20	7.0	93196 8	Use UPC
SD0525R6	carton	5" x 25' insulated duct	1	1.40	7.70	8.0	93197 5	Use UPC
SD0625R6	carton	6" x 25' insulated duct	1	1.60	8.20	8.5	93198 2	Use UPC
SD0725R6	carton	7" x 25' insulated duct	1	2.00	8.90	10.0	93199 9	Use UPC
SD0825R6	carton	8" x 25' insulated duct	1	2.01	10.60	11.0	93200 2	Use UPC
SD1025R6	carton	10" x 25' insulated duct	1	3.10	14.40	15.0	93202 6	Use UPC
SD1225R6	carton	12" x 25' insulated duct	1	3.80	17.00	19.0	93201 9	Use UPC
SD1425R6	carton	14" x 25' insulated duct	1	6.50	19.00	19.5	00197 5	Use UPC



ID...R6



SD...R6

**UL 181 Class 1 Surface Burning Characteristics:**

**Maximum Flame Spread: 25**

**Maximum Smoke Developed: 50**

ALSO CLASSIFIED IN ACCORDANCE WITH ADC FLEXIBLE DUCT PERFORMANCE & INSTALLATION STANDARDS USING ASTM C-518 AT INSTALLED WALL THICKNESS ON FLAT INSULATION ONLY

**To Order Call: 1-800-665-4328 or Fax: 905-641-2696**



Thermal Performance

## INSULATED DUCT



### INSULATED DUCT - R 4.2 UL LISTED 181 CLASS 1 AIR CONNECTOR

Model Number	Packed	Description	Cs Pk.	Cs Cb.	Psc Wt	Cs Wt	UPC Code 0 79916	Bar Code
<b>BLACK POLY JACKET- Maximum Installation length of 14ft</b>								
FLI0425	carton	4" x 25' insulated duct, Aluminum/polyester core	1	1.01	5.6	6	92605 6	Use UPC
FLI0525	carton	5" x 25' insulated duct, Aluminum/Polyester core	1	1.01	6.9	8	92606 3	Use UPC
FLI0625	carton	6" x 25' insulated duct, Aluminum/Polyester core	1	1.4	7.3	8	92607 0	Use UPC

Other Sizes available upon request.



FLI

### INSULATED DUCT - R 8 UL LISTED 181 CLASS 1 AIR DUCT

Model Number	Packed	Description	Cs Pk.	Cs Cb.	Psc Wt	Cs Wt	UPC Code 0 79916	Bar Code
<b>BLACK POLY JACKET</b>								
ID0425R8	carton	4" x 25' insulated duct, Polyester core	1	1.70	10.60	11.0	00269 9	Use UPC
ID0525R8	carton	5" x 25' insulated duct	1	1.70	12.10	12.5	00270 5	Use UPC
ID0625R8	carton	6" x 25' insulated duct	1	1.70	13.50	14.0	96283 5	Use UPC
ID0725R8	carton	7" x 25' insulated duct	1	3.00	14.90	15.0	00271 2	Use UPC
ID0825R8	carton	8" x 25' insulated duct	1	3.00	17.30	18.0	93284 2	Use UPC
ID1025R8	carton	10" x 25' insulated duct	1	6.70	25.70	26.0	93285 9	Use UPC
ID1225R8	carton	12" x 25' insulated duct	1	6.70	28.80	29.0	93286 6	Use UPC
ID1425R8	carton	14" x 25' insulated duct	1	7.00	32.20	33.0	00274 3	Use UPC
<b>SILVER METALIZED JACKET</b>								
SD0425R8	carton	4" x 25' insulated duct, Polyester core	1	3	11.5	12	00391 7	Use UPC
SD0525R8	carton	5" x 25' insulated duct	1	3	12.5	13.5	00392 4	Use UPC
SD0625R8	carton	6" x 25' insulated duct	1	3	12.8	14	93271 2	Use UPC
SD0725R8	carton	7" x 25' insulated duct	1	3.8	15.3	16	00393 1	Use UPC
SD0825R8	carton	8" x 25' insulated duct	1	3.8	16.4	17	93272 9	Use UPC
SD1025R8	carton	10" x 25' insulated duct	1	6.8	24.7	25	93273 6	Use UPC
SD1225R8	carton	12" x 25' insulated duct	1	6.8	27.6	28	93274 3	Use UPC



ID...R8



SD...R8

### INSULATING SLEEVE - R 4.2 Black

Model Number	Packed	Description Inside Diameter x Length	Cs Pk.	Cs Cb.	Psc Wt	Cs Wt	UPC Code 0 79916	Bar Code
ISP045	carton	4" x 5' insulated sleeve	50	9	0.66	34	91224 0	5 00 79916 912245
ISP0410	carton	4" x 10' insulated sleeve	25	9	1.3	34	91231 8	5 00 79916 912313
ISP0425	carton	4" x 25' insulated sleeve	10	9	3.3	34	00295 8	5 00 79916 002953
ISP055	carton	5" x 5' insulated sleeve	50	9	0.7	38	91225 7	5 00 79916 912252
ISP0510	carton	5" x 10' insulated sleeve	25	9	1.5	38	91232 5	5 00 79916 912320
ISP0525	carton	5" x 25' insulated sleeve	10	9	3.8	34	00296 5	5 00 79916 002960
ISP065	carton	6" x 5' insulated sleeve	35	9	0.9	33	91226 4	5 00 79916 912269
ISP0610	carton	6" x 10' insulated sleeve	20	9	1.7	35	91233 2	5 00 79916 912337
ISP0625	carton	6" x 25' insulated sleeve	10	9	5.4	54	00297 2	5 00 79916 002977
ISP075	carton	7" x 5' insulated sleeve	35	9	1.01	36	91227 1	5 00 79916 912276
ISP0710	carton	7" x 10' insulated sleeve	15	9	2.03	33	91234 9	5 00 79916 912344
ISP085	carton	8" x 5' insulated sleeve	20	9	1.16	25	91228 8	5 00 79916 912283
ISP0810	carton	8" x 10' insulated sleeve	15	9	2.22	34	91235 6	5 00 79916 912351
ISP105	carton	10" x 5' insulated sleeve	20	9	1.36	29	91229 5	5 00 79916912290
ISP1010	carton	10" x 10' insulated sleeve	10	9	2.7	28	91236 3	5 00 79916912368
ISP125	carton	12" x 5' insulated sleeve	20	9	1.57	33	91230 1	5 00 79916912306
ISP1210	carton	12" x 10' insulated sleeve	10	9	3.2	32	91237 0	5 00 79916912373
ISP145	carton	14" x 5' insulated sleeve	20	9	1.7	34	00298 9	5 00 79916001984
ISP1410	carton	14" x 10' insulated sleeve	1	0.4	3.5	3.5	91238 7	5 00 79916912382

Also available in R 6 & R 8



Thermal Performance



ISP

### INSULATED DUCT - R 4.2 UL LISTED 181 CLASS 1 AIR CONNECTOR

Model Number	Packed	Description	Cs Pk.	Cs Cb.	Psc Wt	Cs Wt	UPC Code 0 79916	Bar Code
<b>BLACK POLY JACKET- Maximum Installation length of 14ft</b>								
PDPI0425	carton	4" x 25' insulated duct, Polyester core	1	1.02	5.5	6	91320 9	Use UPC
PDPI0525	carton	5" x 25' insulated duct, Polyester core	1	1.3	6.5	7	91321 6	Use UPC
PDPI0625	carton	6" x 25' insulated duct, Polyester core	1	1.4	7.1	8	91322 3	Use UPC

Other Sizes available upon request.

#### UL 181 Class 1 Surface Burning Characteristics:

Maximum Flame Spread: 25

Maximum Smoke Developed: 50

ALSO CLASSIFIED IN ACCORDANCE WITH ADC FLEXIBLE DUCT PERFORMANCE & INSTALLATION STANDARDS USING ASTM C-518 AT INSTALLED WALL THICKNESS ON FLAT INSULATION ONLY



PDPI

## DUCT ACCESSORIES

### ALUMINUM ELBOWS - 90 deg.

Model Number	Packed	Description	Cs Pk.	Cs Cb.	Psc Wt	Cs Wt	UPC Code 0 79916	Bar Code
DE903	bulk	3" x 90° aluminum elbow	12	1.3	0.2	3	20015 6	5 00 79916 20015 1
DE904	bulk	4" x 90° aluminum elbow	12	1	0.24	3	20016 3	5 00 79916 20016 8
DE905	bulk	5" x 90° aluminum elbow	32	6.3	0.32	12	20150 4	5 00 79916 20150 9
DE906	bulk	6" x 90° aluminum elbow	28	6.3	0.39	12	20151 1	5 00 79916 20151 6



DE

### INCREASER / REDUCER

Model Number	Packed	Description	Cs Pk.	Cs Cb.	Psc Wt	Cs Wt	UPC Code 0 79916	Bar Code
IRB43	bulk	4" TO 3" heavy duty plastic	12	0.4	0.17	2	70011 3	5 00 79916 70011 8
DIRB43	bulk	4" TO 3" aluminum	12	0.3	0.1	1.3	70010 6	5 00 79916 70010 1



IRB

### CLAMPS

Model Number	Packed	Description	Cs Pk.	Cs Cb.	Psc Wt	Cs Wt	UPC Code 0 79916	Bar Code
<b>PLASTIC RATCHET CLAMP - HEAVY DUTY AND ADJUSTABLE</b>								
CX34	bag	adjustable 3" & 4" (2 per bag)	50	0.7	0.03	2	70000 7	5 00 79916 70000 2
CB34	bulk	adjustable 3" & 4"	100	0.55	0.01	2	70014 4	5 00 79916 70014 9
<b>METAL WORM DRIVE CLAMP</b>								
<i>Accommodates Semi-Rigid Aluminum Duct A0 (oversized)</i>								
MC325	bulk	3" clamp	25	0.27	0.07	2	70008 3	5 00 79916 70008 1
MC4	bulk	4" clamp	25	0.4	0.09	2.5	70009 0	5 00 79916 70009 5
MC450	bulk	4" clamp	50	0.3	0.08	4.4	70009 0	5 00 79916 01001 4
MCX4	bag	4" clamp (2 per bag)	25	0.3	0.15	5	70016 8	5 00 79916 70016 3
MC525	bulk	5" clamp	25	0.3	0.1	3	70002 1	5 00 79916 70002 9
MC625	bulk	6" clamp	25	0.3	0.11	3	70003 8	5 00 79916 70003 6
MC7	bulk	7" clamp	12	0.2	0.14	2	70006 9	5 00 79916 70006 4
MC8	bulk	8" clamp	12	0.3	0.16	2	70007 6	5 00 79916 70007 1
<b>METAL SPRING TENSION CLAMP</b>								
MSCX4	bag	4" clamp (2 per bag)	50	0.3	0.07	7	70004 5	5 00 79916 70004 0
MSC4100	bulk	4" clamp	100	0.4	0.07	7	70013 7	5 00 79916 70013 2
<b>METAL BOLT CLAMP</b>								
MBC3	bulk	3" metal bolt & nut clamp	50	0.4	0.08	4	70020 5	5 00 79916 70020 0
MBC4	bulk	4" metal bolt & nut clamp	50	0.4	0.09	4.5	70005 2	5 00 79916 70005 7



DIRB



CX,CB



MC



MSC



MBC

### DUCT COUPLER - Connects any flexible and/or semi-rigid duct together

Model Number	Packed	Description Plastic	Cs Pk.	Cs Cb.	Psc Wt	Cs Wt	UPC Code 0 79916	Bar Code
FDC4	bag	For 4" diameter duct	12	0.5	0.19	2.3	70022 9	5 00 79916 70022 4
FDC3	bag	For 3" diameter duct	12	0.5	0.13	1.6	70021 7	5 00 79916 70021 3



FDC

### DUCT CONNECTOR - Aluminum

Model Number	Packed	Description	Cs Pk.	Cs Cb.	Psc Wt	Cs Wt	UPC Code 0 79916	Bar Code
DAC3	bulk	3"dia. aluminum connector	12	0.3	0.08	1	20009 5	5 00 79916 20009 0
DAC4	bulk	4" aluminum connector	12	0.5	0.09	1	20010 1	5 00 79916 20010 6
DAC5	bulk	5" aluminum connector	12	1.3	0.11	1.3	93155 5	5 00 79916 93155 0
DAC6	bulk	6" aluminum connector	12	1.3	0.2	2	20021 7	5 00 79916 20021 2
DAC7	bulk	7" aluminum connector	12	1.3	0.27	3.3	20023 1	5 00 79916 20023 6
DAC8	bulk	8" aluminum connector	12	2.7	0.29	3.5	03403 4	5 00 79916 03403 9
DAC3C	bulk	3"dia. aluminum connector	12	0.3	0.08	1	00200 2	5 00 79916 00200 7
DAC4C	bulk	4" aluminum connector	12	0.5	0.09	1	00201 9	5 00 79916 00201 4
DAC6C	bulk	6" aluminum connector	12	1.3	0.2	2	00457 0	5 00 79916 00457 5



DAC

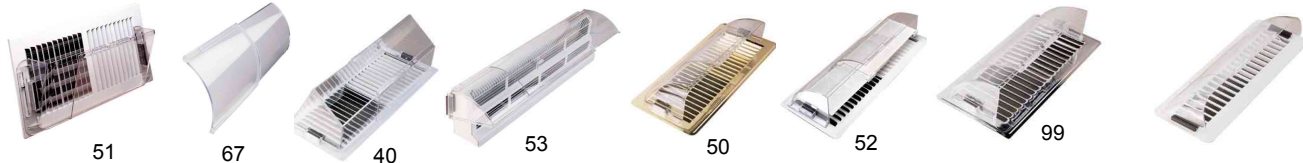


DAC C

To Order Call: 1-800-665-4328 or Fax: 905-641-2696

## AIR DEFLECTORS

Model Number	Packed	Description	Cs Pk.	Cs Cb.	Psc Wt	Cs Wt	UPC Code 0 79916	Bar Code
<b>HEATING &amp; COOLING</b>								
50/12	Carton	Premium unbreakable; adj. 10"-14"	12	0.9	0.54	6.5	00050 3	5 00 79916 01008 3
50	Carton	Premium unbreakable; adj. 10"-14"	24	1.7	0.51	12.5	00050 3	5 00 79916 00050 8
52	Carton	Deluxe w/dust filter; adj. 10"-14"(with ext.slv #67 max length 26")	24	1.6	0.48	12	00052 7	5 00 79916 00052 2
99/12	Carton	Quality w/permanent metal latch magnet, adj. 10"-14"	12	0.9	0.5	6	00099 2	5 00 79916 01067 0
99	Carton	Quality w/permanent metal latch magnet, adj. 10"-14"	48	3	0.34	18	00099 2	5 00 79916 00099 7
101	Carton	Promotional w/high powered molded rubber magnet; adj.10"-14"	48	2.3	0.23	12	00101 2	5 00 79916 00101 7
53	Carton	For baseboard registers; adj. 15"-25"(with ext. #67 max length 37")	12	1.8	0.89	11	00053 4	5 00 79916 00053 9
<b>COOLING</b>								
51	Carton	For wall registers; adj. 10"-16"	12	1.2	0.85	10	00051 0	5 00 79916 00051 5
40	Carton	For floor registers; adj. 10"-16"	12	1.5	0.73	9	00040 4	5 00 79916 00040 9
<b>ACCESSORIES</b>								
67	Carton	12" extension sleeve for extending Models 52, 53, 50	12	0.6	0.6	7	00067 1	5 00 79916 00067 6



101

## DIFFUSERS

Model Number	Packed	Description	Cs Pk.	Cs Cb.	Psc Wt	Cs Wt	UPC Code 0 79916	Bar Code
TFGX4	bag	4" diffuser, white, with collar	6	0.4	0.45	3	21015 5	5 00 79916 21015 0
TFGX6	bag	6" diffuser, white, with collar	6	0.8	0.78	5	21016 2	5 00 79916 21016 7

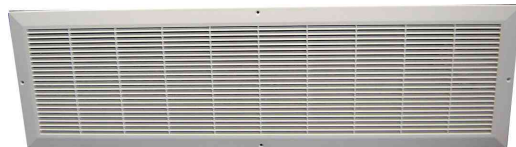
## REGISTER ACCESSORIES

Model Number	Packed	Description	Cs Pk.	Cs Cb.	Psc Wt	Cs Wt	UPC Code 0 79916	Bar Code
<b>MAGNETIC VENT COVERS</b>								
MVCX815	bag	8" x 15" magnetic vent cover (3 per bag)	6	0.1	0.73	7	00031 2	5 00 79916 00031 7
MVCX512	bag	5" x 12" magnetic vent cover (3 per bag)	6	0.1	0.52	3.5	00030 2	5 00 79916 00030 8



## PLASTIC REGISTERS

Model Number	Packed	Description	Cs Pk.	Cs Cb.	Psc Wt	Cs Wt	UPC Code 0 79916	Bar Code
<b>FLOOR</b>								
RF31003	indiv. shrink	3" x 10" plastic floor register - white	10	0.5	0.2	5	20170 2	5 00 79916 20170 7
RF31028	indiv. shrink	3" x 10" plastic floor register - taupe	10	0.5	0.2	5	20174 0	5 00 79916 20174 5
RF41003	indiv. shrink	4" x 10" plastic floor register - white	10	0.6	0.21	5	20172 6	5 00 79916 20172 1
RF41028	indiv. shrink	4" x 10" plastic floor register - taupe	10	0.6	0.21	6	20176 4	5 00 79916 20176 9
RF41203	indiv. shrink	4" x 12" plastic floor register - white	10	0.7	0.64	6.5	20173 3	5 00 79916 20173 8
RF41228	indiv. shrink	4" x 12" plastic floor register - taupe	10	0.7	0.64	6.5	20177 1	5 00 79916 20177 6
RF31003B	bulk	3" x 10" plastic floor register - white	20	0.9	0.35	7	20178 8	5 00 79916 20178 3
RF31028B	bulk	3" x 10" plastic floor register - taupe	20	0.9	0.35	8	20181 8	5 00 79916 20181 3
RF31036B	bulk	3" x 10" plastic floor register - brown	20	0.9	0.35	8	20195 5	5 00 79916 20195 0
RF41003B	bulk	4" x 10" plastic floor register - white	20	1.1	0.51	10.5	20179 5	5 00 79916 20179 0
RF41028B	bulk	4" x 10" plastic floor register - taupe	20	1.1	0.51	10.5	20182 5	5 00 79916 20182 0
RF41036B	bulk	4" x 10" plastic floor register - brown	20	1.1	0.51	10.5	20196 2	5 00 79916 20196 7
RF41203B	bulk	4" x 12" plastic floor register - white	20	1.3	0.64	13	20180 1	5 00 79916 20180 6
RF41228B	bulk	4" x 12" plastic floor register - taupe	20	1.3	0.64	13	20183 2	5 00 79916 20183 7
<b>PLASTIC GRILLS</b>								
RS14603	bulk	6" X 14" Plastic Grill White	20	0.69	0.42	9	00178 4	5 00 79916 00178 5
RS14803	bulk	8" X 14" Plastic Grill White	20	0.83	0.55	11.5	00179 1	5 00 79916 00179 5
RS30803	bulk	8" X 30" Plastic Grill White	20	1.6	0.99	20	00180 7	5 00 79916 00180 5



RS30803



RS14603

## METAL REGISTERS/GRILLS

Model Number	Packed	Description	Cs Pk.	Cs Cb.	Psc Wt	Cs Wt	UPC Code 0 79916	Bar Code
<b>BASEBOARD GRILLS- 1" Thick</b>								
RMB24603	bulk	24" X 6" X 1" BASEBOARD GRILL White	10	1.22	1.58	16	00181 4	5 00 79916 00181 9
RMB30603	bulk	30" X 6" X 1" BASEBOARD GRILL White	10	1.5	2.2	22	00182 1	5 00 79916 00182 6
RMB14603	bulk	14" X 6" X 1" BASEBOARD GRILL White	10	0.75	1.12	12	00183 8	5 00 79916 00183 3
RMB14803	bulk	14" X 8" X 1" BASEBOARD GRILL White	10	0.93	1.2	12.5	00185 2	5 00 79916 00185 7
RMB24803	bulk	24" X 8" X 1" BASEBOARD GRILL White	10	1.52	1.88	19	00187 6	5 00 79916 00187 1
RMB30803	bulk	30" X 8" X 1" BASEBOARD GRILL White	10	1.87	1.65	19	00188 3	5 00 79916 00188 8



RMB30803

<b>FLOOR REGISTERS</b>								
RMF41036	indiv. shrink	4" X 10" BROWN FLOOR REGISTER	20	1.3	1.05	21	00162 3	5 00 79916 00162 8
RMF41003	indiv. shrink	4" X 10" WHITE FLOOR REGISTER	20	1.3	1.05	21	00163 0	5 00 79916 00163 5
RMF31036	indiv. shrink	3" X 10" BROWN FLOOR REGISTER	20	1.3	1.05	21	00164 7	5 00 79916 00164 2
RMF31003	indiv. shrink	3" X 10" WHITE FLOOR REGISTER	20	1.3	1.05	21	00165 4	5 00 79916 00165 9

RMF41036



RMF41003



<b>SIDEWALL GRILLS- 5/16" Thick</b>								
RMRA14603	bulk	14" X 6" X 5/16" RETURN AIR GRILL White	20	0.73	0.94	19	00166 1	5 00 79916 00166 6
RMRA24603	bulk	24" X 6" X 5/16" RETURN AIR GRILL White	20	1.3	1.54	31	00167 8	5 00 79916 00167 3
RMRA30603	bulk	30" X 6" X 5/16" RETURN AIR GRILL White	20	1.5	1.87	38	00168 5	5 00 79916 00168 0
RMRA24803	bulk	24" X 8" X 5/16" RETURN AIR GRILL White	20	1.5	1.93	39	00169 2	5 00 79916 00169 7
RMRA30803	bulk	30" X 8" X 5/16" RETURN AIR GRILL White	12	1.85	2.4	29	00170 8	5 00 79916 00170 3

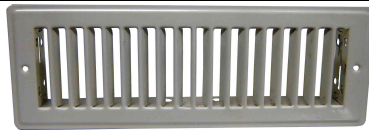


RMRA14603



RMRA30803

<b>METAL FLOOR GRILLS ONLY</b>								
RMF41003G	bulk	4" X 10" FLOOR GRILL ONLY WITH HOLES WHITE	20	1.3	1.05	21	00654 3	5 00 79916 00654 8
RMF41036G	bulk	4" X 10" FLOOR GRILL ONLY WITH HOLES BROWN	20	1.3	1.05	21	00655 0	5 00 79916 00655 5
RMF31003G	bulk	3" X 10" FLOOR GRILL ONLY WITH HOLES WHITE	20	1.3	1.05	21	00656 7	5 00 79916 00656 2
RMF31036G	bulk	3" X 10" FLOOR GRILL ONLY WITH HOLES BROWN	20	1.3	1.05	21	00657 4	5 00 79916 00657 9



RMF41003G

## DRYER VENTING



GK8WF

**DRYER VENT KIT with SUPURR GUARD® LOUVERED HOOD WITH BUILT-IN BIRD & RODENT GUARD - Includes duct, aluminum pipe, collar & clamps**

Model Number	Packed	Description	Cs Pk.	Cs Cb.	Psc Wt	Cs Wt	UPC Code 0 79916	Bar Code
<b>HEATING &amp; COOLING</b>								
GK8WF	carton	4" x 8' Supurr-Flex®, white hood, pipe, clamps	6	2.2	1.72	11	52001 8	5 00 79916 52001 3



## DRYER VENTING

### DRYER VENT KIT with SUPURR GUARD® LOUVERED HOOD WITH BUILT-IN BIRD & RODENT GUARD - Includes aluminum pipe & collar

#### HEATING & COOLING

Model Number	Packed	Description	Cs Pk.	Cs Cb.	Psc Wt.	Cs Wt.	UPC Code 0 79916	Bar Code
GVHXLW4	hang tab	4" white hood; assembled	6	2.4	0.9	5.5	52023 0	5 00 79916 52023 5
GVHAW4	bulk	4" white hood; assembled	6	2.4	0.85	6	52021 6	5 00 79916 52021 1



**GVHAW4**  
LIFETIME GUARANTEE

### DRYER VENT KIT with SUPURR GUARD® LOUVERED HOOD WITH BUILT-IN BIRD & RODENT GUARD

Model Number	Packed	Description	Cs Pk.	Cs Cb.	Psc Wt.	Cs Wt.	UPC Code 0 79916	Bar Code
GHR4W	carton	4" white hood w/built-in bird & rodent guard	6	0.6	0.67	4	52040 7	5 00 79916 52040 2
GH4W	bulk	4" white hood w/built-in bird & rodent guard	6	0.6	0.54	3.5	00431 0	5 00 79916 00431 5



**GH4W**  
LIFETIME GUARANTEE

### DRYER VENT KITS with WIDE MOUTH HOOD with REMOVABLE BIRD & RODENT GUARD - Includes duct, aluminum pipe, collar & clamps

Model Number	Packed	Description	Cs Pk.	Cs Cb.	Psc Wt.	Cs Wt.	UPC Code 0 79916	Bar Code
<b>KIT W/SUPURR-FLEX® UL LISTED CLOTHES DRYER TRANSITION DUCT</b>								
RK8WF	carton	4" dia. X 8' Supurr-Flex®, white hood	6	1.6	1.7	10.5	60023 9	5 00 79916 60023 4



**RK8WF**

### DRYER VENT KITS with WIDE MOUTH HOOD with REMOVABLE BIRD & RODENT GUARD - Includes hood with bird guard, aluminum pipe & collar

Model Number	Packed	Description	Cs Pk.	Cs Cb.	Psc Wt.	Cs Wt.	UPC Code 0 79916	Bar Code
RVH3W	bulk	3" white hood, pipe & collar; assembled	20	5.3	0.6	12	00383 2	5 00 79916 00383 7
RVHAW4	bulk	4" white hood, pipe & collar; assembled	6	1.6	0.8	5	60046 8	5 00 79916 60046 3
RVHAW4/18	bulk	4" white hood, pipe & collar; assembled	18	5	0.67	13	60046 8	5 00 79916 01038 0
RVH4W	bulk	4" white hood, pipe & collar; assembled	20	5.3	0.68	14	92610 0	5 00 79916 92610 5
RVH4B	bulk	4" brown hood, pipe & collar; assembled	20	5.3	0.68	14	00384 9	5 00 79916 00384 4
RVHAB4	bulk	4" brown hood, pipe & collar; assembled	6	1.9	0.8	5	60047 5	5 00 79916 60047 0
RVHAB4/18	bulk	4" brown hood, pipe & collar; assembled	18	4	0.67	13	60047 5	5 00 79916 01126 4
RVHCW4	carton	4" white hood, pipe & collar; unassembled	6	1.4	0.74	5	60001 7	5 00 79916 60001 2
RVHUW4	bulk	4" white hood, pipe & collar; unassembled	12	1.3	0.66	8	60048 2	5 00 79916 60048 7
RVHUB4	bulk	4" brown hood, pipe & collar; unassembled	12	1.3	0.66	8	60049 9	5 00 79916 60049 4
RVHXW4	hang tab	4" brown hood, pipe & collar; assembled	6	1.7	0.75	5	61210 2	5 00 79916 61210 7
RVHXB4	hang tab	4" brown hood, pipe & collar; assembled	6	1.7	0.75	5	61211 9	5 00 79916 61211 4



**RVH**

### DRYER VENT KITS with WIDE MOUTH HOOD with REMOVABLE BIRD & RODENT GUARD

Model Number	Packed	Description	Cs Pk.	Cs Cb.	Psc Wt.	Cs Wt.	UPC Code 0 79916	Bar Code
HR3W	bulk	3" white hood only	24	1.9	0.4	10	50201 4	5 00 79916 50201 9
HR3B	bulk	3" brown hood only	24	1.9	0.4	10	50202 1	5 00 79916 50202 6
HR4W	bulk	4" white hood only	24	1.9	0.42	10	50203 8	5 00 79916 50203 3
HR4B	bulk	4" brown hood only	24	1.9	0.42	10	50204 5	5 00 79916 50204 0



**HR**

### DRYER VENT KIT with SUPURR VENT® LOUVERED HOODS Includes hood, aluminum pipe, collar, duct & clamps

Model Number	Packed	Description	Cs Pk.	Cs Cb.	Psc Wt.	Cs Wt.	UPC Code 0 79916	Bar Code
<b>KIT W/SUPURR-FLEX® UL LISTED CLOTHES DRYER TRANSITION DUCT</b>								
SK5WF	carton	4" x 5' Supurr-Flex®, white hood, pipe, collar, clamps	6	1.6	1.33	8	50012 6	5 00 79916 50012 1
SK8WF	carton	4" x 8' Supurr-Flex®, white hood, pipe, collar, clamps	6	1.6	1.47	9	50022 5	5 00 79916 50022 0
<b>KIT W/SEMI-RIGID ALUMINUM DUCT</b>								
SK8WA	carton	4" x 8' Semi-rigid duct, white hood, pipe, collar, clamps	3	1.9	2.33	7	50015 7	5 00 79916 50015 2



**SK..WF**



**SK..WA**

To Order Call: 1-800-665-4328 or Fax: 905-641-2696  
www.deflecto.com

## DRYER VENTING

### DRYER VENTS with SUPURR VENT® LOUVERED VENT HOODS Includes hood, aluminum pipe & collar

Model Number	Packed	Description	Cs Pk.	Cs Cb.	Psc Wt	Cs Wt	UPC Code 0 79916	Bar Code
SVHAW3	bulk	3" white hood, pipe & collar; assembled	6	1.6	0.6	4	50041 6	5 00 79916 50041 1
SVHAB3	bulk	3" brown hood, pipe & collar; assembled	6	1.6	0.06	4	50042 3	5 00 79916 50042 8
SVH3W	bulk	3" white hood, pipe & collar; assembled	20	4.3	0.48	10	92603 2	5 00 79916 92603 7
SVH3B	bulk	3" brown hood, pipe & collar; assembled	20	4.3	0.48	10	92611 7	5 00 79916 92611 2
SVHAW4	bulk	4" white hood, pipe & collar; assembled	6	1.6	0.63	4	50043 0	5 00 79916 50043 5
SVHAW4/18	bulk	4" white hood, pipe & collar; assembled	18	4.1	0.52	10	50043 0	5 00 79916 01039 7
SVH4W	bulk	4" white hood, pipe & collar; assembled	20	4.1	0.52	10	92604 9	5 00 79916 92604 4
SVHAB4	bulk	4" brown hood, pipe & collar; assembled	6	1.6	0.63	4	50044 7	5 00 79916 50044 2
SVH4B	bulk	4" brown hood, pipe & collar; assembled	20	4.1	0.52	10	92612 4	5 00 79916 92612 9
SVHUW3	bulk	3" white hood, pipe & collar; unassembled	12	1.3	0.45	6	50061 4	5 00 79916 50061 9
SVHUW4	bulk	4" white hood, pipe & collar; unassembled	12	1.3	0.49	6	50063 8	5 00 79916 50063 3
SVHUB4	bulk	4" brown hood, pipe & collar; unassembled	12	1.3	0.49	6	50064 5	5 00 79916 50064 0
SVHCW4	carton	4" white hood, pipe & collar; unassembled	6	1.3	0.85	5	50001 0	5 00 79916 50001 5
SVHCB4	carton	4" brown hood, pipe & collar; assembled	6	1.3	0.85	5	50002 7	5 00 79916 50002 2



SVHA



HSR, HS, VHS



HSF..B



HSB..W



LTF



HUPK8WA/25



HUPK8F

### VENT HOODS - SUPURR-VENT® LOUVERED VENT HOODS

Model Number	Packed	Description	Cs Pk.	Cs Cb.	Psc Wt	Cs Wt	UPC Code 0 79916	Bar Code
HSR4W	Bag	4" white hood - carded	6	0.4	0.31	2	50053 9	5 00 79916 50053 4
HSR4W/18	Bag	4" white hood - carded	18	1.3	0.31	6	50053 9	5 00 79916 01036 6
HSR4B	Bag	4" brown hood - carded	6	0.4	0.31	2	50054 6	5 00 79916 50054 1
HSR4B/18	Bag	4" brown hood - carded	18	1.3	0.31	6	50054 6	5 00 79916 01035 9
HS3W/48	bulk	3" white hood	48	1.4	0.21	11	50210 6	5 00 79916 01128 8
HS3B/48	bulk	3" brown hood	48	1.4	0.21	11	50211 3	5 00 79916 01129 5
VHS3W	bulk	3" white hood	80	2.4	0.33	27	00093 0	5 00 79916 00093 5
VHS3B	bulk	3" brown hood	80	2.4	0.33	27	00483 9	5 00 79916 00483 4
HS4W/48	bulk	4" white hood	48	1.4	0.21	11	50212 0	5 00 79916 01130 1
HS4B/48	bulk	4" brown hood	48	1.4	0.21	11	50049 2	5 00 79916 01131 8
HSB4W	bulk	4" white hood with bird bars	24	0.7	0.24	6	50216 8	5 00 79916 50216 3
VHSB4W	bulk	4" white hood with bird bars	80	2.1	0.24	20	00092 3	5 00 79916 00092 8
HSB4B	bulk	4" brown hood with bird bars	24	0.7	0.24	6	50218 2	5 00 79916 50218 7
HSF4W	bulk	4" white hood; flush mount	24	0.6	0.21	6	00468 6	5 00 79916 00468 1
HSF4B	bulk	4" brown hood; flush mount	24	0.06	0.21	6	00441 9	5 00 79916 00441 4
HSF6B	bulk	6" brown hood; flush mount	24	0.06	0.57	13.5	00470 4	5 00 79916 00470 7
HSF6W	bulk	6" white hood; flush mount	24	0.06	0.57	13.5	00469 8	5 00 79916 00469 3

### LINT TRAP KIT - INDOOR DRYER VENTING

Model Number	Packed	Description	Cs Pk.	Cs Cb.	Psc Wt	Cs Wt	UPC Code 0 79916	Bar Code
LTF	carton	Kit w/Supurr-Flex® Duct, 4" dia. x 8', 2 clamps	6	1.4	1.44	9	50100 0	5 00 79916 50100 5

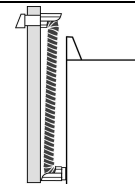
### DRYER TO VENT HOOK-UP KIT - Includes 2 Hooker-Upper® Protectors and duct

Model Number	Packed	Description	Cs Pk.	Cs Cb.	Psc Wt	Cs Wt	UPC Code 0 79916	Bar Code
<b>KIT W/SUPURR-FLEX® UL LISTED CLOTHES DRYER TRANSITION DUCT(F0)</b>								
HUPK8F	carton	4" x 8' hook-up kit w/Supurr-Flex® duct	8	1.4	1.44	12	50416 2	5 00 79916 50416 7
<b>KIT W/SEMI-RIGID ALUMINUM DUCT(A0)</b>								
HUPK8WA/4	bag	4" x 8' hook-up kit w/Semi-rigid duct	4	1.4	1.72	7	50427 8	5 00 79916 01116 5
HUPK8WA/25	bag display	4" x 8' hook-up kit w/Semi-rigid duct	25	9.6	1.72	43	50427 8	5 00 79916 01110 3

The Deflect-o® Advantage  
Committed to quality and service



LTF



HUPK8F

## DRYER VENTING

### DRYER VENTING BOX

Model Number	Packed	Description	Cs	Cs	Psc	Cs	UPC Code	Bar Code
			Pk.	Cb.	Wt	Wt	0 79916	
DVBOX	bulk	dryer venting box with metal connector	12	5.7	2.09	25	20221 1	5 00 79916 20221 6
DVBOXPC	bulk	dryer venting box with plastic connector	12	5.7	2.08	25	20321 8	5 00 79916 20321 3



DVBOX

## ALL METAL DRYER VENTING

### ALUMINUM PIPE

Model Number	Packed	Description	Cs	Cs	Psc	Cs	UPC Code	Bar Code
			Pk.	Cb.	Wt	Wt	0 79916	
DP244	bulk	4" diameter x 24" aluminum pipe	24	0.7	0.32	8	20018 7	5 00 79916 20018 2
DP244/12	bulk	4" diameter x 24" aluminum pipe	12	0.7	0.32	5	20018 7	5 00 79916 01179 0
DP604	bulk	4" diameter x 60" aluminum pipe	12	1.9	1.1	14	20036 1	5 00 79916 20036 6



DP

AM,MAC



AM46

### SEMI-RIGID FLEXIBLE ALUMINUM DUCT - compressed

Model Number	Packed	Description	Cs	Cs	Psc	Cs	UPC Code	Bar Code
			Pk.	Cb.	Wt	Wt	0 79916	
<b>COLLAR ENDS</b>								
AM46	bulk	4" x 6' duct with male & female collars	12	2.99	0.68	8.2	19951 1	5 00 79916 19951 6
AM48	bag	4" x 8' duct with male & female collars	9	2.99	0.79	7.2	19952 8	5 00 79916 19952 3
MAC36024/2	carton	4" x 2' duct with male & female collars	2	0.33	0.9	3	03108 8	5 00 79916 03108 3
AM42	bulk	4" x 2' duct with male & female collars	12	0.5	0.32	3.8	00156 2	5 00 79916 00156 7
AM41	bulk	4" x 1' duct with male & female collars	16	0.5	0.23	2.8	00149 4	5 00 79916 00149 9
AM32	bulk	3" x 2' duct with male & female collars	12	0.5	0.25	3	00177 7	5 00 79916 00177 2
AM38C	bulk	3" x 8' duct with male & female collars	16	2.99	0.7	10.0	00580 5	5 00 79916 00580 0
<b>PLAIN ENDS</b>								
A045/9	bulk	4" x 5' duct	9	3	0.55	5	42418 7	5 00 79916 42418 2
A048/6	bulk	4" x 8' duct	6	3	0.48	2.9	42405 7	5 00 79916 42405 2
A048/9	bulk	4" x 8' duct	9	3	0.91	8.3	42400 2	5 00 79916 42400 7
A048/16	bulk	4" x 8' duct	16	5	0.48	12.6	42400 2	5 00 79916 01049 6
A048/40	bulk	4" x 8' duct	40	11.2	0.6	33	42400 2	5 00 79916 01119 6
A048X/9	bulk	4" x 8' duct	6	3	0.48	8	42402 6	5 00 79916 01019 9
A048X/40	bag	4" x 8' duct	40	11.2	0.6	33	42402 6	5 00 79916 01171 4
A048MX/9	bag	4" x 8' duct with 2 metal worm drive clamps	9	3	0.91	9	42401 9	5 00 79916 42401 4
A0410/40	bulk	4" x 10' duct	40	14.8	0.99	41	42448 4	5 00 79916 42448 9
A0425/3	bulk	4" x 25' duct	3	4.1	3.13	9.3	42412 5	5 00 79916 42412 0
<b>CRIMPED END</b>								
A048C/9	bulk	4" x 8' duct	9	3	0.91	9	42420 0	5 00 79916 42420 5
A048C/16	bulk	4" x 8' duct	16	5	0.48	13	42441 5	5 00 79916 42441 0



AM,MAC



A0



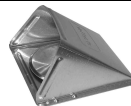
A0...C

For UL Listed Semi Rigid Duct see pages 21 & 23b

### DRYER VENT HOODS w/ALUMINUM VENT HOOD

*Includes hood, aluminum pipe & collar*

Model Number	Packed	Description	Cs	Cs	Psc	Cs	UPC Code	Bar Code
			Pk.	Cb.	Wt	Wt	0 79916	
DAVHCA4	carton	4" aluminum hood; individually boxed	6	0.4	0.93	6	20006 4	5 00 79916 20006 9
DAVHA4/12	bulk	4" aluminum hood	12	0.4	0.93	6	20037 8	5 00 79916 20037 3
DAV4/48	bulk	4" aluminum hood only.No pipe	48	2.7	0.21	10	00437 2	5 00 79916 00437 7



DAV4/48

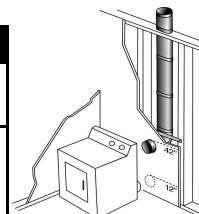


DAVH

## ALL METAL DRYER VENTING

### IN WALL OVAL DRYER VENTING SYSTEM - Fits any installation up to 9 ft. tall

Model Number	Packed	Description	Cs Pk.	Cs Cb.	Psc Wt	Cs Wt	UPC Code	Bar Code
DAIW	carton	New construction venting system. Kit contains: 1 oval-to-round top boot (4" dia. X 12" long), 3 pieces of 4" dia. Oval pipe each 32" long with support strip, 1 oval-to-round 90° fitting with 4" dia. opening. All aluminum construction.	1	0.9	2.27	4	0 79916 20041 5	use UPC



**DAIW**

### SKINNY DUCT® ALUMINUM DRYER VENT - Solves tight space venting problems (Oval)

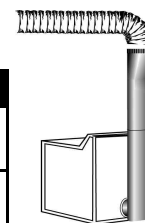
Model Number	Packed	Description	Cs Pk.	Cs Cb.	Psc Wt	Cs Wt	UPC Code	Bar Code
DAF1	carton	4" oval; adjustable 18" to 31"	1	0.5	1.38	2	0 79916 20038 5	use UPC
DAF2	carton	4" oval; adjustable 27" to 48"	1	0.8	1.7	2	0 79916 20039 2	use UPC



**DAF1,2**

### SKINNY DUCT® ALUMINUM DRYER VENT - 4" Oval to 4" Round Top Take-off

Model Number	Packed	Description	Cs Pk.	Cs Cb.	Psc Wt	Cs Wt	UPC Code	Bar Code
DAF3	carton	4" oval, adjustable 27"- 48" c/w 4" oval to Rd transition fitting	1	1.1	1.6	2	0 79916 20044 5	use UPC



**DAF3**

### CLOSE CONNECT - ADJUSTS UP TO 6"

Model Number	Packed	Description	Cs Pk.	Cs Cb.	Psc Wt	Cs Wt	UPC Code	Bar Code
AMCC	bag	4" diameter collars, rectangular shape, adjusts up to 6"	6	1.4	0.83	5	0 79916 19955 9	5 00 79916 19955 4



**AMCC**

### ACCESSORIES

Model Number	Packed	Description	Cs Pk.	Cs Cb.	Psc Wt	Cs Wt	UPC Code	Bar Code
<b>90 Degree ELBOW</b>								
DE904	display	4" x 90° adjustable aluminum elbow	12	1.3	0.25	3	0 79916 20016 3	5 00 79916 20016 8



**DE**

### OFFSET CONNECTOR

AMDOC/6	bulk	4" diameter offset connector	6	1	0.38	3	0 79916 19953 5	5 00 79916 01174 5
---------	------	------------------------------	---	---	------	---	-----------------	--------------------



**AMDOC**

### ALUMINUM WALL CAPS

Model Number	Packed	Description	Cs Pk.	Cs Cb.	Psc Wt	Cs Wt	UPC Code	Bar Code
WACA4	bulk	4" diameter x 6" long pipe, c/w spring	10	4	0.63	7	0 79916 00068 8	5 00 79916 00068 3
WACA5	bulk	5" diameter x 6" long pipe, c/w spring	10	4.3	0.92	9.5	0 79916 00069 5	5 00 79916 00069 0
WACA6	bulk	6" diameter x 6" long pipe, c/w spring	10	4.3	0.96	11	0 79916 00071 8	5 00 79916 00071 3



**WACA**

### GALVANIZED CHIMNEY SLEEVES

Model Number	Packed	Description	Cs Pk.	Cs Cb.	Psc Wt	Cs Wt	UPC Code	Bar Code
CHSL46	bulk	4" diameter x 6" long	10	1.2	0.6	6	0 79916 91402 2	N/A
CHSL56	bulk	5" diameter x 6" long	10	1.7	0.73	8	0 79916 91403 9	N/A
CHSL66	bulk	6" diameter x 6" long	10	1.7	0.78	8.4	0 79916 91404 6	N/A
CHSL86	bulk	8" diameter x 6" long	10	4.3	1.01	12	0 79916 03402 7	5 00 79916 03402 2



**CHSL**

## ALL METAL DRYER VENTING

### GALVANIZED RAINCAPS - Mushroom shape, No Screen

Model Number	Packed	Description	Cs Pk.	Cs Cb.	Psc Wt	Cs Wt	UPC Code	Bar Code
RACA04	bulk	4" diameter	10	2.5	1	10	91397 1	5 00 79916 91397 3
RACA05	bulk	5" diameter	10	4.3	1.6	16	91398 8	5 00 79916 91398 3
RACA06	bulk	6" diameter	10	5.4	1.8	18	91399 5	5 00 79916 91399 0
RACA07	bulk	7" diameter	10	6.5	2.3	23	91400 8	5 00 79916 91400 3
RACA08	bulk	8" diameter	10	9	2.4	25	91401 5	5 00 79916 91401 0
RACA09	bulk	9" diameter	5	6.5	3.3	15	00364 1	5 00 79916 00364 6
RACA10	bulk	10" diameter	1	5.3	3.7	3.8	00365 8	5 00 79916 00365 3
RACA12	bulk	12" diameter	1	5.3	5	5.1	00366 5	5 00 79916 00366 0
RACA14	bulk	14" diameter	1	5.3	6.3	6.4	00367 2	5 00 79916 00367 7



RACA

### GALVANIZED VENT HOODS - with pipe

Model Number	Packed	Description	Cs Pk.	Cs Cb.	Psc Wt	Cs Wt	UPC Code	Bar Code
GDV4	bulk	4" diameter	20	5.4	1.2	22	91471 8	5 00 79916 91471 3
GDV5	bulk	5" diameter with spring	10	6.5	2.3	24	91472 5	5 00 79916 91472 0
GDV6	bulk	6" diameter with spring	10	6.5	2.5	26	91473 2	5 00 79916 91473 7
GDV7	bulk	7" diameter with spring	5	6.5	3.1	18	91474 9	5 00 79916 91474 4
GDV8	bulk	8" diameter with spring	5	6.5	3.3	19	00011 4	5 00 79916 00011 9



GDV

## DRYER VENTING ACCESSORIES

### CLOTHES DRYER EXHAUST BOOSTER - Includes Tube-Fan™ Fan, bracket & screws

Model Number	Packed	Description	Cs Pk.	Cs Cb.	Psc Wt	Cs Wt	UPC Code	Bar Code
TF4	carton	4" diameter Tube-Fan™ Fan, 115vac	1	0.7	5.8	7	21004 9	use UPC



TF

### DUCT CONNECTOR PLUS PROTECTOR - Easily attaches duct to dryer and protects duct from being smashed behind the dryer

Model Number	Packed	Description	Cs Pk.	Cs Cb.	Psc Wt	Cs Wt	UPC Code	Bar Code
HUP	carton	4" white Hooker-Upper® Protector	6	0.6	0.46	3	70023 6	5 00 79916 70023 1
HUPB	bulk	4" white Hooker-Upper® Protector	24	1.5	0.46	8	00429 7	5 00 79916 00429 2



HUP

### DRAFT BLOCKER - 4" plastic backdraft damper for dryer venting

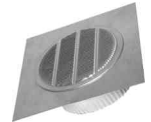
Model Number	Packed	Description	Cs Pk.	Cs Cb.	Psc Wt	Cs Wt	UPC Code	Bar Code
BD04	carton	4" white, damper	12	0.8	0.22	3	50070 6	5 00 79916 50070 1



BD

### 4" Under eave Round perforated vent with flashing and collar

Model Number	Packed	Description	Cs Pk.	Cs Cb.	Psc Wt	Cs Wt	UPC Code	Bar Code
EARL4TF	carton	4" round aluminum perforated vent, flashing & collar	6	0.4	0.18	1.1	00517 1	5 00 79916 00517 6
EARL4TFW	carton	4" Rd. White aluminum perforated vent, flashing & collar	6	0.4	0.18	1.1	00770 0	5 00 79916 00770 5



EARL

### UNDEREVE® VENT HOOK UP KIT - w/semi-rigid duct extension

Model Number	Packed	Description	Cs Pk.	Cs Cb.	Psc Wt	Cs Wt	UPC Code	Bar Code
EVEK4	carton	4" diameter x 3' Semi-rigid duct kit w/Undereve® Vent	1	0.5	1.46	2	50082 9	use UPC



EVEK

### UNDEREVE® VENT - For bathroom & general exhaust venting Easily mounts over exhaust hole under eave to exhaust air through attic space

Model Number	Packed	Description	Cs Pk.	Cs Cb.	Psc Wt	Cs Wt	UPC Code	Bar Code
EVE/6	carton	white plastic vent with dampers	6	2.4	0.63	4	50080 5	5 00 79916 01057 6



EVE

To Order Call: 1-800-665-4328 or Fax: 905-641-2696

www.deflecto.com

## DRYER VENTING ACCESSORIES

### UNIVERSAL BIRD GUARD - Fits over any 3" or 4" vent hood

Model Number	Packed	Description	Cs Pk.	Cs Cb.	Psc Wt	Cs Wt	UPC Code 0 79916	Bar Code
UBGW	carton	Fits over any 3" or 4" vent, white	12	2	0.52	6	20102 3	5 00 79916 20102 8
UBGWB	bulk	Fits over any 3" or 4" vent, white	48	2.1	0.52	14	00425 9	5 00 79916 00425 4
UBGWL	label	Fits over any 3" or 4" vent, white	12	0.6	0.52	8	20102 3	5 00 79916 01177 6
UBGBB	bulk	Fits over any 3" or 4" vent, <b>brown</b>	48	2.1	0.52	14	00440 2	5 00 79916 00440 7



**UBGW**

### EXTRA HEAT® - Dryer Heat Saver

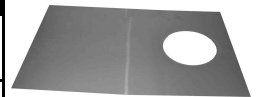
Model Number	Packed	Description	Cs Pk.	Cs Cb.	Psc Wt	Cs Wt	UPC Code 0 79916	Bar Code
EX12	carton	4" Dia. Rigid plastic with safety relief valve, washable lint screen, built-in hanger & 2 clamps	12	2	0.95	12	52312 5	5 00 79916 52312 0



**EX**

### ALUMINUM WINDOW PLATE

Model Number	Packed	Description	Cs Pk.	Cs Cb.	Psc Wt	Cs Wt	UPC Code 0 79916	Bar Code
DAWP1218	bulk	12" x 18" with 4 3/4" through hole	6	0.1	0.36	2	20008 8	5 00 79916 20008 3



**DAWP**

## GENERAL VENTING

### VENT KIT w/WIDE MOUTH HOOD w/REMOVABLE BIRD & RODENT GUARD Includes vinyl hose , aluminum pipe, collar and clamps

Model Number	Packed	Description	Cs Pk.	Cs Cb.	Psc Wt	Cs Wt	UPC Code 0 79916	Bar Code
RK8W	carton	4" diameter x 8' vinyl hose; white hood	12	3.3	1.5	18	60020 8	5 00 79916 60020 3

**NOT RECOMMENDED FOR CLOTHES DRYER VENTING**



**RK**

### VENT KIT w/SUPURR-VENT® LOUVERED VENT HOOD Includes Supurr-Flex® Duct, aluminum pipe, collar and clamps

Model Number	Packed	Description	Cs Pk.	Cs Cb.	Psc Wt	Cs Wt	UPC Code 0 79916	Bar Code
SK8WF	carton	4"x 8' Supurr-Flex® duct; white hood	6	1.6	1.47	9	50022 5	5 00 79916 50022 0



**SK F**

## BATHROOM VENTING & ACCESSORIES

### BATH & SPA FANS

Model Number	Packed	Description	Cs Pk.	Cs Cb.	Psc Wt	Cs Wt	UPC Code 0 79916	Bar Code
TF4	carton	4" Tube-Fan® Fan, 115vac	1	0.7	5.7	8	21004 9	use UPC

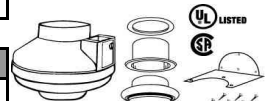
**INCLUDES FAN, MOUNTING BRACKET & SELF-TAPPING SCREWS**



**TF**

**KIT INCLUDES FAN, MOUNTING BRACKET, DIFFUSER & SELF-TAPPING SCREWS**

TFK6	carton	6" Tube-Fan® Fan, 115vac	1	1.3	8.8	9	21002 5	use UPC
------	--------	--------------------------	---	-----	-----	---	---------	---------



**TFK**

### DIFFUSERS

TFG4	carton	4" diffuser, white	6	0.6	0.62	4	93431 0	5 00 79916 93431 5
TFG6	carton	6" diffuser, white	6	0.8	0.91	6	93421 1	5 00 79916 93421 6
TFGX4	bag	4" diffuser, white	6	0.6	0.45	3	21015 5	5 00 79916 21015 0
TFGX6	bag	6" diffuser, white	6	0.8	0.78	5	21016 2	5 00 79916 21016 7



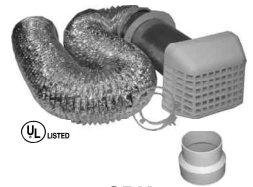
**TFG**

## BATHROOM VENTING

### BATHROOM VENT KIT w/SUPURR GUARD® LOUVERED HOOD w/BUILT-IN

**BIRD & RODENT GUARD - Includes duct, aluminum pipe, 3"- 4" increaser & clamps**

Model Number	Packed	Description	Cs Pk.	Cs Cb.	Psc Wt	Cs Wt	UPC Code	Bar Code
<b>KIT w/SUPURR-FLEX® UL LISTED 181 CLASS 1 AIR CONNECTOR</b>								
GBK8W4F	carton	4"x 8' Supurr-Flex® duct, white hood, 3 to 4" IRB, clamps	3	1.1	1.8	5	52030 8	5 00 79916 52030 3



**GBK**

### BATHROOM VENT KITS w/SUPURR VENT® LOUVERED HOOD

**Includes hose, aluminum pipe, 3"- 4" increaser & clamps**

Model Number	Packed	Description	Cs Pk.	Cs Cb.	Psc Wt	Cs Wt	UPC Code	Bar Code
<b>KIT w/VINYL HOSE</b>								
SBK5W4	carton	4" dia x 5' vinyl hose, white hood, 3 to 4" IRB, clamps	6	1.6	1.2	7	50034 8	5 00 79916 50034 3



**SBK**

### BATHROOM VENT HOODS - SUPURR VENT® LOUVERED HOODS

**Includes hood, aluminum pipe & collar**

Model Number	Packed	Description	Cs Pk.	Cs Cb.	Psc Wt	Cs Wt	UPC Code	Bar Code
<b>0 79916</b>								
SVHAW3	bulk	3" white hood, assembled	6	1.6	0.6	4	50041 6	5 00 79916 50041 1
SVHAB3	bulk	3" brown hood, assembled	6	1.6	0.6	4	50042 3	5 00 79916 50042 8
SVHUW3	bulk	3" white hood; unassembled	12	1.3	0.6	5	50061 4	5 00 79916 50061 9
SVHUB3	bulk	3" brown hood; unassembled	12	1.3	0.45	5	50062 1	5 00 79916 50062 7



**SVH**

### BATHROOM VENT HOODS - SUPURR-VENT® LOUVERED HOOD

Model Number	Packed	Description	Cs Pk.	Cs Cb.	Psc Wt	Cs Wt	UPC Code	Bar Code
<b>0 79916</b>								
HS3W/48	bulk	3" diameter white hood	48	1.4	0.22	12	50210 6	5 00 79916 01128 8
HS3B/48	bulk	3" diameter brown hood	48	1.4	0.22	12	50211 3	5 00 79916 01129 5



**HS3B**

### BATHROOM VENT HOODS - WIDE MOUTH HOOD w/REMOVABLE BIRD & RODENT GUARD - Includes hood, aluminum pipe & collar

Model Number	Packed	Description	Cs Pk.	Cs Cb.	Psc Wt	Cs Wt	UPC Code	Bar Code
<b>0 79916</b>								
RVHXW3	Bag, hang tab	3" diameter white hood; assembled	6	1.9	0.8	5	61208 9	5 00 79916 61208 4
RVHAW3	bulk	3" white hood; assembled	6	1.9	0.8	4	61212 6	5 00 79916 61212 1
RVHAB3	bulk	3" brown hood; assembled	6	1.9	0.8	4	61213 3	5 00 79916 61213 8



**RVH**

### BATHROOM VENT HOODS - WIDE MOUTH HOOD w/REMOVABLE BIRD & RODENT GUARD

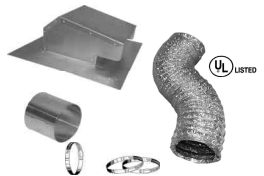
Model Number	Packed	Description	Cs Pk.	Cs Cb.	Psc Wt	Cs Wt	UPC Code	Bar Code
<b>0 79916</b>								
HR3W	bulk	3" diameter white hood	24	2	0.42	10	50201 4	5 00 79916 50201 9
HR3B	bulk	3" diameter brown hood	24	2	0.42	10	50202 1	5 00 79916 50202 6



**HR**

### BATHROOM VENT KIT w/ALUMINUM ROOF VENT

Model Number	Packed	Description	Cs Pk.	Cs Cb.	Psc Wt	Cs Wt	UPC Code	Bar Code
<b>0 79916</b>								
<b>ALUMINUM ROOF VENT KIT w/4"x 8' UL LISTED SUPURR-FLEX® DUCT, CLAMPS, DAC4 CONNECTOR, FOAM REDUCER</b>								
DARCKF	carton	for 3" and 4" roof venting installation	1	0.4	0.95	2	19970 2	use UPC



**DARCK**

### BATHROOM VENT ALUMINUM HOOD w/Pipe & Collar

Model Number	Packed	Description	Cs Pk.	Cs Cb.	Psc Wt	Cs Wt	UPC Code	Bar Code
<b>0 79916</b>								
DAVHA3/12	bulk	3" diameter aluminum vent hood/pipe & plastic collar	12	2.8	0.4	5	20007 1	5 00 79916 20007 6
DAVHA4/12	bulk	4" diameter aluminum vent hood/pipe & plastic collar	12	2.8	0.5	5	20037 8	5 00 79916 20037 3



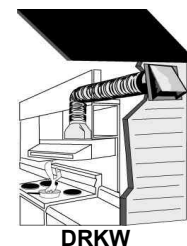
**DAVHA**

To Order Call: 1-800-665-4328 or Fax: 905-641-2696

## KITCHEN VENTING

### KITCHEN RANGE HOOD DUCT KIT - Wall Installation

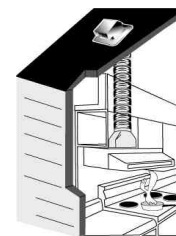
Model Number	Packed	Description	Cs Pk.	Cs Cb.	Psc Wt	Cs Wt	UPC Code	0	Bar Code
DRKW	carton	7" dia. x 8' semi-rigid aluminum duct, 7" aluminum vent hood with tailpiece, 3/4" x 10" rectangular to 7" round galvanized transition	1	4.8	5.4	6	19980 1		use UPC



DRKW

### KITCHEN RANGE HOOD DUCT KIT - Roof Installation

Model Number	Packed	Description	Cs Pk.	Cs Cb.	Psc Wt	Cs Wt	UPC Code	0	Bar Code
DRKR	carton	7" X 8' semi-rigid aluminum duct, 7" screened roof cap with damper (self-flashing), 3/4" x 10" rectangular to 7" round galvanized transition.	1	4.8	5.9	6	19990 0		use UPC



DRKR

### ELBOWS (GALVANIZED) - 45° & 90° Shortway and Longway Elbows, Self-locking 3/4" x 10" Assembled

Model Number	Packed	Description	Cs Pk.	Cs Cb.	Psc Wt	Cs Wt	UPC Code	0	Bar Code
<b>3 1/4" x 10" Rectangular opening</b>							79916		
DGES345	bulk	45° shortway elbow	6	1.4	1.36	8	19982 5	5 00 79916 19982 0	
DGES390	bulk	90° shortway elbow	6	1.4	1.6	9.5	19983 2	5 00 79916 19983 7	
DGEL345	bulk	45° longway elbow	3	1.4	2.3	7	19984 9	5 00 79916 19984 4	
DGEL390	bulk	90° longway elbow	3	1.4	2.6	8	19985 6	5 00 79916 19985 1	



DGES



DGEL

### TRANSITIONS (GALVANIZED) 3/4" X 10", STRAIGHT ONE SIDE

Model Number	Packed	Description	Cs Pk.	Cs Cb.	Psc Wt	Cs Wt	UPC Code	0	Bar Code
<b>3 1/4" x 10" Rectangular opening</b>							79916		
DGT34	bulk	4" round transition	9	1.4	0.75	7	19986 3	5 00 79916 19986 8	
DGT35	bulk	5" round transition	6	1.4	0.8	5	19987 0	5 00 79916 19987 5	
DGT36	bulk	6" round transition	5	1.4	0.95	5	19988 7	5 00 79916 19988 2	
DGT37	bulk	7" round transition	4	1.4	1.2	5	19989 4	5 00 79916 19989 9	



DGT

### RECTANGULAR DUCT (WALL STACK) - Self-locking, unassembled

Model Number	Packed	Description	Cs Pk.	Cs Cb.	Psc Wt	Cs Wt	UPC Code	0	Bar Code
<b>3 1/4" x 10" Rectangular opening</b>							79916		
DGD32	bulk	3/4" x 10" x 2' length each (2 pieces = 1 section); galvanized	6 pairs	1	3.2	18	19981 8	5 00 79916 19981 3	



DGD

### ALUMINUM WALLCAPS

Model Number	Packed	Description	Cs Pk.	Cs Cb.	Psc Wt	Cs Wt	UPC Code	0	Bar Code
<b>c/w damper</b>							79916		
DAWC	carton	3/4" x 10" aluminum, c/w spring	1	0.6	1.12	1.2	20020 0		use UPC
DGWC	carton	3/4" x 10" galvanized, c/w spring	1	0.6	1.95	2	20003 3		use UPC
DAHC5	carton	5" hood with 3" tailpiece; c/w spring, aluminum	1	0.5	1.01	1.2	20032 3		use UPC
DAHC6	carton	6" hood with 3" tailpiece; c/w spring, aluminum	1	0.5	1.1	1.2	20033 0		use UPC
DAHC7	carton	7" hood with 3" tailpiece; c/w spring, aluminum	1	0.5	1.4	2	20034 7		use UPC
DAHC8	carton	8" hood with 3" tailpiece; c/w spring, aluminum	1	0.6	1.5	2	93232 3		use UPC



DAWC



DAHC

### ALUMINUM ROOF VENTS

Model Number	Packed	Description	Cs Pk.	Cs Cb.	Psc Wt	Cs Wt	UPC Code	0	Bar Code
<b>c/w screen, damper</b>							79916		
DARC4	carton	4" diameter exhaust hole, No tailpipe	1	0.4	0.9	1	20001 9		use UPC
DARC4T	bulk	4" diameter exhaust hole, with 2" long tailpipe	10	4.3	0.83	8.5	19998 6	5 00 79916 19998 1	
DARC6	carton	6" diameter exhaust hole, with 2" long tailpipe	1	0.5	1.2	1.5	20000 2		use UPC
DARC7	carton	7" diameter exhaust hole, No tailpipe	1	0.6	1.9	2	19999 3		use UPC



DARCT



DARC

To Order Call: 1-800-665-4328 or Fax: 905-641-2696



# KITCHEN VENTING

## PLASTIC VENT HOODS - SUPURR-VENT® LOUVERED VENT HOODS

Model Number	Packed	Description	Cs Pk.	Cs Cb.	Psc Wt	Cs Wt	UPC Code 0 79916	Bar Code
SVHAW5	bulk	5" white hood w/grid, pipe; assembled	10	4.3	0.91	9.1	51024 8	5 00 79916 51024 3
SVHAB5	bulk	5" brown hood w/grid, pipe; assembled	10	4.3	0.91	9.1	51025 5	5 00 79916 51025 0
SVHAW6	bulk	6" white hood w/grid, pipe; assembled	10	4.3	0.97	10	51026 2	5 00 79916 51026 7
SVHAW6/8	bulk	6" white hood w/grid, pipe; assembled	8	4.4	1.02	8	51026 2	5 00 79916 51026 0
SVHAB6	bulk	6" brown hood w/grid, pipe; assembled	10	4.3	0.97	10	51027 9	5 00 79916 51027 4
HS5W/12	bulk	5" white hood , no grid	12	0.7	0.57	7	50213 7	5 00 79916 01134 9
HS5B/12	bulk	5" brown hood , no grid	12	0.7	0.57	7	50214 4	5 00 79916 01135 6
HS6W/12	bulk	6" white hood , no grid	12	0.7	0.6	7	50215 1	5 00 79916 01136 3
HS6B/12	bulk	6" brown hood , no grid	12	0.7	0.6	7	50050 8	5 00 79916 01137 0
HS7W	bulk	7" white hood , no grid	6	0.7	0.62	4	50217 5	5 00 79916 50217 0
HSG5W/12	bulk	5" white hood with grid	12	0.7	0.57	7	00435 8	5 00 79916 01138 7
VHS5GW	bulk	5" white hood with grid	32	2.1	0.36	12	00703 8	5 00 79916 00703 3
HSG5B/12	bulk	5" brown hood with grid	12	0.7	0.57	7	00438 9	5 00 79916 01139 4
HSG6W/12	bulk	6" white hood with grid	12	0.7	0.6	7	00436 5	5 00 79916 01141 7
VHS6GW	bulk	6" white hood with grid	32	2.1	0.37	12	00702 1	5 00 79916 00702 6
HSG6B/12	bulk	6" brown hood with grid	12	0.7	0.6	7	00439 6	5 00 79916 01140 0
DRVH514W	bulk	5" dia. x 14" alum.pipe, white hood w/grid; assembled	10	5.3	0.92	10	00660 4	5 00 79916 00660 9
DRVH514B	bulk	5" dia. x 14" alum.pipe, brown hood w/grid; assembled	10	5.3	0.92	10	00661 1	5 00 79916 00661 6
DRVH614W	bulk	6" dia. x 14" alum.pipe, white hood w/grid; assembled	10	5.3	1.08	11	00662 8	5 00 79916 00662 3
DRVH614B	bulk	6" dia. x 14" alum.pipe, brown hood w/grid; assembled	10	5.3	1.08	11	00663 5	5 00 79916 00663 0
SVH414W	bulk	4" dia.x 14" alum pipe, white hood, collar; assembled	20	5.3	0.58	12	00664 2	5 00 79916 00664 7
SVH414B	bulk	4" dia.x 14" alum pipe, brown hood, collar; assembled	20	5.3	0.58	12	00665 9	5 00 79916 00665 4
SVMAW414	bulk	4" wht fixed louvered hood w/14" pipe/collar;assembled	20	5.3	0.53	11	00666 6	5 00 79916 00666 1
SVMAB414	bulk	4" brn fixed louvered hood w/14" pipe/collar;assembled	20	5.3	0.53	11	00667 3	5 00 79916 00667 8
SVMAW514	bulk	5" white fixed louvered hood w/14" pipe; assembled	10	5.3	1.05	10.5	00668 5	5 00 79916 00668 5
SVMAB514	bulk	5" brown fixed louvered hood w/14" pipe; assembled	10	5.3	1.05	10.5	00669 2	5 00 79916 00669 2
SVMAW614	bulk	6" white fixed louvered hood w/14" pipe; assembled	10	5.3	1.05	10.5	00670 8	5 00 79916 00670 8
SVMAB614	bulk	6" brown fixed louvered hood w/14" pipe; assembled	10	5.3	1.1	11	00671 5	5 00 79916 00671 5



**HS,SVH 5 & 6**  
(No collar included)



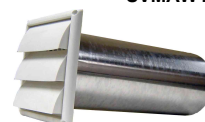
**HSG,VHS...G**



**DRVH514W (No collar)**



**SVMAW414**



**SVMAW614 (No Collar)**

## SUSPENDED CEILING PRODUCTS

Model Number	Packed	Description	Cs Pk.	Cs Cb.	Psc Wt	Cs Wt	UPC Code 0 79916	Bar Code
<b>DO-IT-YOURSELF DUCT KIT FOR EXTENDING HEATING &amp; COOLING</b>								
TVK4	carton	For areas up to 60 sq. ft. Includes 4" diffuser, 4" x 10' UL listed Supurr-Flex® duct, clamps & starter collar	3	1	2	6	70102 8	5 00 79916 70102 3
TVK6	carton	For areas up to 150 sq. ft. Includes 6" diffuser, 6" x 10' UL listed Supurr-Flex® duct, clamps & starter collar	3	1.2	2.7	8	70101 1	5 00 79916 70101 6



**TVK**

### DIFFUSERS FOR SUSPENDED CEILING APPLICATION

TFG4	carton	4" diameter diffuser, white	6	0.6	0.62	4	93431 0	5 00 79916 93431 5
TFG6	carton	6" diffuser, white	6	0.8	0.91	6	93421 1	5 00 79916 93421 6
TFGX4	bag	4" diffuser, white	6	0.6	0.45	3	21015 5	5 00 79916 21015 0
TFGX6	bag	6" diffuser, white	6	0.8	0.78	5	21016 2	5 00 79916 21016 7



**TFG**

### SUPURR-FLEX® UL LISTED 181 CLASS 1 AIR CONNECTOR

FL0425	carton	4" x 25' Supurr-Flex® duct	1	0.32	2.2	2.3	93025 1	use UPC
TF420	carton	4" x 20' Supurr-Flex® duct	3	0.5	2	6.0	21018 6	5 00 79916 21018 1
FL0625	carton	6" x 25' Supurr-Flex® duct	1	1.13	2.6	2.7	93027 5	use UPC



**FL,TF**

### STARTER COLLAR CONNECTOR INTO MAIN TRUNK LINE

DSC4	bulk	4" diameter starter collar	6	0.4	0.17	1	70110 3	5 00 79916 70110 8
DSC6	bulk	6" starter collar	6	0.6	0.26	2	70111 0	5 00 79916 70111 5
DSC8	bulk	8" starter collar	10	1.3	0.35	3.5	20155 9	5 00 79916 20155 4
DSC10	bulk	10" starter collar	5	1.3	0.68	3	20156 6	5 00 79916 20156 1



**DSC**

Other sizes available

Model Number	Packed	Description	Cs Pk.	Cs Cb.	Psc Wt	Cs Wt	UPC Code 0 79916	Bar Code
<b>CLAMPS - PLASTIC RATCHET; HEAVY DUTY, ADJUSTABLE</b>								
CX34	bag	4" clamp,plastic, 2 per bag	50	0.7	0.03	2	70000 7	5 00 79916 70000 2
MC625	bulk	6" clamp,.metal worm gear	25	0.3	0.11	3	70003 8	5 00 79916 70003 6



**CX**



**MC**

To Order Call: 1-800-665-4328 or Fax: 905-641-2696

www.deflecto.com

## ALUMINUM PIPE

ALUMINUM PIPE									
Model Number	Packed	Description	Cs Pk.	Cs Cb.	Psc Wt	Cs Wt	UPC Code	Bar Code	
0 79916									
DP243	bulk	3"diameter x 24" aluminum pipe	24	0.61	0.29	7	20017 0	5 00 79916 20017 5	
DP244	bulk	4"diameter x 24" aluminum pipe	24	0.7	0.32	8	20018 7	5 00 79916 20018 2	
DP244/12	bulk	4"diameter x 24" aluminum pipe	12	0.7	0.32	5	20018 7	5 00 79916 01179 0	
DP245	bulk	5"diameter x 24" aluminum pipe	10	0.79	0.62	6	20152 8	5 00 79916 20152 3	
DP246	bulk	6"diameter x 24" aluminum pipe	10	0.79	0.72	7	20153 5	5 00 79916 50153 1	
DP604	bulk	4"diameter x 60" aluminum pipe	12	1.9	1.1	14	20036 1	5 00 79916 20036 6	



DP



RC



RCDVT



Model RCDV



Model RCDVT



Model RCT



Model RC

## SPECIALTY HOODS & FRESH AIR INTAKE HOODS

PLASTIC EXHAUST ROOF CAPS									
Model Number	Packed	Description	Cs Pk.	Cs Cb.	Psc Wt	Cs Wt	UPC Code	Bar Code	
0 79916									
<b>NO LOUVERS OR SCREENS</b>									
RCDV	bulk	Roof cap exhaust vent w/flapper & no grid; black	4	1.3	1	5	20201 3	5 00 79916 20201 8	
RCDVT	bulk	Roof cap exhaust vent w/flapper & 4" to 5"dia. staked collar; no grid; black	6	3.3	1.4	9	20211 2	5 00 79916 20211 7	
<b>WITH LOUVERS</b>									
RC	bulk	Roof cap exhaust vent w/flapper & grid; black	4	1.3	1	5	20200 6	5 00 79916 20200 1	
RCT	bulk	Roof cap exhaust vent w/flapper, & grid & 4" to 5"dia. staked collar; no grid; black	6	3.3	1.4	9	20210 5	5 00 79916 20210 0	

*Wide Mouth hoods feature removable bird & rodent guard*

## FRESH AIR INTAKE VENTS w/MOLDED PLASTIC GRID(SCREEN)

Model Number	Packed	Description	Cs Pk.	Cs Cb.	Psc Wt	Cs Wt	UPC Code	Bar Code	
0 79916									
RVMAW4	bulk	4" white wide mouth hood w/pipe,collar, assembled	6	1.9	0.77	5	60050 5	5 00 79916 60050 0	
RVMAB4	bulk	4" brown wide mouth hood w/pipe,collar, assembled	6	1.9	0.77	5	60051 2	5 00 79916 60051 7	
HRM4W	bulk	4" white wide mouth hood	6	0.6	0.42	3	50220 5	5 00 79916 50220 0	
HRM4B	bulk	4" brown wide mouth hood	6	0.6	0.42	3	50221 2	5 00 79916 50221 7	
SVMAW4	bulk	4" wht <b>fixed</b> louvered hood w/pipe/collar;assembled	6	1.9	0.8	4	50039 3	5 00 79916 50039 8	
SVMAW5	bulk	5" white <b>fixed</b> louvered hood w/pipe; assembled	10	3	0.92	17	51020 0	5 00 79916 51020 5	
SVMAW5	bulk	5" brown <b>fixed</b> louvered hood w/pipe; assembled	10	3	0.92	17	51021 7	5 00 79916 51021 2	
SVMAW6	bulk	6" white <b>fixed</b> louvered hood w/pipe; assembled	10	3	0.99	15	51022 4	5 00 79916 51022 9	
SVMAW6	bulk	6" brown <b>fixed</b> louvered hood w/pipe; assembled	10	3	0.99	15	51023 1	5 00 79916 51023 6	
HSM4W/24	bulk	4" white <b>fixed</b> louvered hood	24	0.7	0.22	8	50225 0	5 00 79916 01132 5	
VHSM4W	bulk	4" white <b>fixed</b> louvered hood	52	0.6	0.22	12	00485 3	5 00 79916 00485 8	
HSM4B/24	bulk	4" brown <b>fixed</b> louvered hood	24	0.7	0.22	8	50226 7	5 00 79916 01133 2	
HSM5B	bulk	5" brown <b>fixed</b> louvered hood	6	0.6	0.48	3	00268 2	5 00 79916 00268 7	
HSM5W	bulk	5" white <b>fixed</b> louvered hood	6	0.6	0.48	3	50222 9	5 00 79916 50222 4	
HSM6W	bulk	6" white <b>fixed</b> louvered hood	6	0.6	0.49	3	50224 3	5 00 79916 50224 8	
HSM6B	bulk	6" brown <b>fixed</b> louvered hood	6	0.6	0.49	3	50046 1	5 00 79916 50046 6	

NOTE: 5" and 6" assembled sizes do not have collar included



RVMAW4



HRM



HSM4W



SVMA4



HSM5,6

## FRESH AIR INTAKE HOODS - Aluminum, with pipe & screen

Model Number	Packed	Description	Cs Pk.	Cs Cb.	Psc Wt	Cs Wt	UPC Code	Bar Code	
0 79916									
AFAI4	bulk	4" diameter,c/w screen	20	5.5	0.7	14	91390 2	5 00 79916 91390 7	
AFAI5	bulk	5" diameter,c/w screen	10	5.5	1.4	14	03226 9	5 00 79916 03226 4	
AFAI6	bulk	6" diameter,c/w screen	10	6.5	1.5	15	93219 4	5 00 79916 93219 9	



AFAI

## FRESH AIR INTAKE HOODS - Galvanized, with pipe & screen

Model Number	Packed	Description	Cs Pk.	Cs Cb.	Psc Wt	Cs Wt	UPC Code	Bar Code	
0 79916									
GFAI4	bulk	4" diameter,c/w screen	20	5.5	1.3	26	91391 9	5 00 79916 91391 4	
GFAI5	bulk	5" diameter,c/w screen	10	6.5	2.6	26	91392 6	5 00 79916 91392 1	
GFAI6	bulk	6" diameter,c/w screen	10	6.5	2.8	28	91393 3	5 00 79916 91393 8	
GFAI7	bulk	7" diameter,c/w screen	5	6.5	3.6	18	91394 0	5 00 79916 91394 5	
GFAI8	bulk	8" diameter,c/w screen	5	9	3.8	19	91395 7	5 00 79916 91395 2	



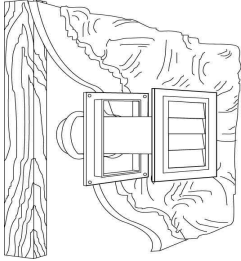
GFAI

To Order Call: 1-800-665-4328 or Fax: 905-641-2696

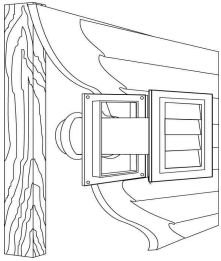
# SPECIALTY HOODS & FRESH AIR INTAKE HOODS

## VENT HOODS - For Vinyl Siding and Stucco Siding

Model Number	Packed	Description	Cs Pk.	Cs Cb.	Psc Wt	Cs Wt	UPC Code 0 79916	Bar Code
HJ4W	bulk	4" white vent hood with backplate only	10	0.4	0.48	4	50303 5	5 00 79916 50303 0
JVHAW4	bulk	4" white vent hood, pipe & collar; assembled	8	2.6	0.9	7	50343 1	5 00 79916 50343 6



**HJ4W**



**JVHAW4**

**NOTES:**

To Order Call: 1-800-665-4328 or Fax: 905-641-2696  
or visit us at  
[www.deflecto.com](http://www.deflecto.com)

*Numerical Index*

<b>Model #</b>	<b>Page</b>	<b>Model #</b>	<b>Page</b>	<b>Model #</b>	<b>Page</b>
40	27	AB34106	7	ACOL1828	6
50	27	AB34107	7	ACON0332	6
51	27	AB4104	7	ACON0432	6
52	27	AB4105	7	ACON0532	6
53	27	AB4106	7	ACON0632	6
67	27	AB4107	7	ACON0732	6
99	27	AB4108	7	ACON0832	6
101	27	AB4125	7	ACON0928	6
50/12	27	AB4126	7	ACON1028	6
99/12	27	AB4127	7	ACON1228	6
AO310/66,A0UL0310	22,23b	AB4147	7	ACON1428	6
AO320/18	22	AB4148	7	ACWD0430	6
A0325/5	22	AB6106	7	ACWD0530	6
A038/16,A0UL038	22,23b	AB6126	7	ACWD0630	6
A038/25	22	AB6127	7	ACWD0730	6
A038/9,A0UL038	22,23b	AB6128	7	ACWD0830	6
A038C/16,A0UL038C	23,23b	AB6148	7	ACWD1028	6
AO410/40,A0UL0410	22,31,23b	ABST24126	7	ACWD1228	6
A0425/3	22	ABST34105	7	ACWD1428	6
AO45/9	22,31	ABST34106	7	AELB039022	18
AO48/16,A0UL048	22,31,23b	ABST34107	7	AELB039025	18
AO48/40	22,31	ACLL04532B	6	AELB049022	18
AO48/6	22,31	ACLL05532B	6	AELB049025	18
AO48/9	22,31	ACLL06532B	6	AELB059022	18
AO48C/16,A0UL048C	23,31,23b	ACLL07532B	6	AELB059025	18
AO48C/9	23,31	ACLL08532B	6	AELB069022	18
AO48MX/9	22,31	ACLL10528	6	AELB069025	18
AO48X/40	22,31	ACLL12528	6	AFAI4	38
AO48X/6	22,31	ACOL0332	6	AFAI5	38
AO58/5,A0UL058	22,23b	ACOL0432	6	AFAI6	38
AO68/4,A0UL068	22,23b	ACOL0432B	6	AFD0310	23
AO68C/4,A0UL068C	23,23b	ACOL0532	6	AFD0310BLK	23
AO78/5,A0UL078	22,23b	ACOL0532B	6	AFD0325	23
AO88/4,A0UL088	22,23b	ACOL0632	6	AFD0410	23
AB24105	7	ACOL0632B	6	AFD0410BLK	23
AB24106	7	ACOL0732	6	AFD0425	23
AB24125	7	ACOL0732B	6	AFD0510	23
AB24126	7	ACOL0832	6	AFD0510BLK	23
AB24145	7	ACOL0832B	6	AFD0525	23
AB3104	7	ACOL0928	6	AFD0610	23
AB3105	7	ACOL1028	6	AFD0610BLK	23
AB3106	7	ACOL1228	6	AFD0710BLK	23
AB34104	7	ACOL1428	6	AFD0810BLK	23
AB34105	7	ACOL1628	6	AFD1010BLK	23

*Numerical Index*

<b>Model #</b>	<b>Page</b>	<b>Model #</b>	<b>Page</b>	<b>Model #</b>	<b>Page</b>
AFD1210BLK	23	BTEE724	17	DAC5	26
AFD1410BLK	23	BTEE824	17	DAC6,DAC6C	26
AFD1610BLK	23	BVA3	20	DAC7	26
AM46	22, 31	BVA4	20	DAC8	26
AM48	22, 31	BVA5	20	DAF1	32
AM32,AM38C	22,31	BVA6	20	DAF2	32
AM41	22,31	CAP0328	4	DAF3	32
AM42	22,31	CAP0428	4	DAHC5	36
AMCC	32	CAP0528	4	DAHC6	36
AMDOC/6	32	CAP0628	4	DAHC7	36
ARR159612	18	CAP0728	4	DAHC8	36
ARR189612	18	CAP0826	4	DAIW	32
ASP033614	18	CAP0926	4	DAMP04	4
ASP033622	18	CAP1026	4	DAMP04TS	4
ASP033625	18	CAP1226	4	DAMP05	4
ASP043614	18	CAP1426	4	DAMP05TS	4
ASP043622	18	CAP1626	4	DAMP06	4
ASP043625	18	CAP1826	4	DAMP06TS	4
ASP053622	18	CAP2026	4	DAMP07	4
ASP053625	18	CB34	26	DAMP07TS	4
ASP063622	18	CB4105	8	DAMP08	4
ASP063625	18	CB4106	8	DAMP08TS	4
BCAP624	17	CBS664	8	DAMP10	4
BCAP724	17	CBS665	8	DAMP10TS	4
BCAP824	17	CBS666	8	DAMP12	4
BD04	33	CBS885	8	DAMP12TS	4
BELB64524	17	CBS886	8	DAMP14	4
BELB69024	17	CBS887	8	DAMP14TS	4
BELB74524	17	CBS888	8	DAMP16	4
BELB79024	17	CBT664	8	DARC4	36
BELB84524	17	CBT665	8	DARC4T	36
BELB89024	17	CBT666	8	DARC6	36
BH320W	23	CBT885	8	DARC7	36
BH350W	23	CBT886	8	DARCKF	35
BH420W	23	CBT887	8	DAV4/48	31
BH450W	23	CBT888	8	DAVHA3/12	35
BINC6724	17	CHSL46	32	DAVHA4/12	31
BINC6824	17	CHSL56	32	DAWC	36
BINC7824	17	CHSL66	32	DAWP1218	34
BPLUG624	17	CHSL86	32	DCLE01030	10
BPLUG724	17	CPH38W	23	DCLE04828	10
BPLUG824	17	CPH45W,CPH48W	23	DCLE04830	10
BRED7624	17	CPG046,CPG056	6	DCLE06026	10
BRED8624	17	CX34	26	DCLE06028	10
BRED8724	17	DAC3,DAC3C	26	DCLE06030	10
BTEE624	17	DAC4,DAC4C	26	DCLE0830	10

*Numerical Index*

<b>Model #</b>	<b>Page</b>	<b>Model #</b>	<b>Page</b>	<b>Model #</b>	<b>Page</b>
DCLE09628	10	DT068430	13	EB34105	7
DCLE09630	10	DT0810428,DT0810528	13	EB34106	7
DCLE09628	10	DT0810430,DT0810530	13	EB34126	12
DCLE09630	10	DT0812428,DT0812528	13	EB4104	7
DCLE12026	10	DT0812430,DT0812530	13	EB4105	7
DCLE12028	10	DT0814428,DT0814528	13	EB4106	7
DCLE12030	10	DT0814430,DT0814530	13	EB4107	7
DE903	18, 26	DT0816428,DT0816528	13	EB4108	7
DE904	18, 26, 32	DT0816430,DT0816530	13	EB4125	7
DE905	18, 26	DT0818426,DT0818526	13	EB4126	7
DE906	18, 26	DT0818428,DT0818528	13	EB4127	7
DGD32	36	DT0820426,DT0820526	13	EB4128	7
DGEL345	36	DT0820428,DT0820528	13	EB4146	7
DGEL390	36	DT0822428,DT0822528	13	EB4147	7
DGES345	36	DT0824426,DT0824526	13	EB4148	7
DGES390	36	DT0824428,DT0824528	13	EB6105	7
DGT34	36	DT0826428,DT0826528	13	EB6106	7
DGT35	36	DT0828428	13	EB6107	7
DGT36	36	DT0830428	13	EB6108	7
DGT37	36	DT0832428	13	EB6126	7
DGWC	36	DT088428,DT088528	13	EB6127	7
DIRB43	26	DT088430,DT088530	13	EB6128	7
DK2010	14	DT1016428	13	EB6148	7
DK2510	14	DT1018428	13	EBST34104	7
DP243	18, 38	DT1020428,DT1020528	13	EBST34105	7
DP244	18, 31, 38	DT1022428,DT1022528	13	EBST34106	7
DP244/12	18,31,38	DT1222428,DT1222528	13	EBST34126	7
DP245	18,38	DT1224428	13	ELB044526	3
DP246	18,38	DT34104	13	ELB044528	3
DP604	18, 31, 38	DT34108	13	ELB044530	3
DRKR	34	DT34128	13	ELB054524	3
DRKW	34	DTT05	5	ELB054526	3
DRVH514W,DRVH514B	37	DTT06	5	ELB054528	3
DRVH614W,DRVH614B	37	DVBOX	31	ELB054530	3
DSC4,DSC6,DSC8	37	DVBOXPC	31	ELB059024	3
DSC10	37	EB24106	7	ELB064524	3
DT0610430	13	EB24125	7	ELB064526	3
DT0612430	13	EB24126	7	ELB064528	3
DT0614430	13	EB24145	7	ELB064530	3
DT0616430	13	EB24146	7	ELB069024	3
DT0618428	13	EB3104	7	ELB074524	3
DT0620428	13	EB3105	7	ELB074526	3
DT0622428	13	EB3106	7	ELB074528	3
DT0624428	13	EB34104	7	ELB079024	3

**Numerical Index**

<b>Model #</b>	<b>Page</b>	<b>Model #</b>	<b>Page</b>	<b>Model #</b>	<b>Page</b>
ELB084524	3	ELBS089028	3	FL0725	22
ELB084526	3	ELBS089030	3	FL0825	22
ELB084528	3	ENCA03410	13	FL1025	22
ELB089024	3	ENCA0810	13	FL1225	22
ELB099024	3	ENCA0812	13	FL1425	22
ELB099026	3	ENCA0814	13	FL1625	22
ELB099028	3	ENCA0816	13	FL1825	22
ELB104524	3	ENCA0818	13	FL2025	22
ELB104526	3	ENCA0820	13	FLI0325	25
ELB109024	3	ENCA0822	13	FLI0425	25
ELB109026	3	ENCA0824	13	FLI0525	25
ELB109028	3	ENCA088	13	FLI0625	25
ELB109030	3	ENCA1020	13	FLI0725	25
ELB124524	3	ENCA1022	13	FLI0825	25
ELB124526	3	ENCA1024	13	FLI1025	25
ELB129024	3	ENCA1026	13	FLI1225	25
ELB129026	3	EVE/6	33	FLI1425	25
ELB129028	3	EVEK4	33		
ELB129030	3	EX12	34		
ELB144524	3	F0405B	21	FLS0325	21
ELB149024	3	FO405B/30	21	FLS0425	21
ELB149026	3	FO405MSX/30	21	FLS0450	21
ELB164524	3	FO408B	21	FLS0525	21
ELB169024	3	FO408B/12	21	FLS0625	21
ELB189024	3	FO408B/30	21	FLS0725	21
ELB209024	3	FO408B/40	21	FLS0825	21
ELB229024	3	FO408BMSX/30	21	FLS1025	21
ELB249024	3	FO420B	21	FLS1225	21
ELBS039026	3	F0425	21	FLS1425	21
ELBS039028	3	F0450	21	FLS1625	21
ELBS039030	3	FC0405B	21	FLXC0405	22
ELBS049026	3	FC0408B	21	FLXC0408	22
ELBS049028	3	FDC4	26	FUL0325	21
ELBS049030	3	FL0325	22	FUL0425	21
ELBS059026	3	FL0325/3	22	FUL0525	21
ELBS059028	3	FL0325/4	22	FUL0625	21
ELBS059030	3	FL0350	22	GBK8W4F	35
ELBS069026	3	FL0425	22	GDV4	33
ELBS069028	3	FL0425/4	22	GDV5	33
ELBS069030	3	FL0425/6	22	GDV6	33
ELBS079026	3	FL0450	22	GDV7	33
ELBS079028	3	FL0525	22	GDV8	33
ELBS079030	3	FL0625	22	GFAI4	38
ELBS089026	3	FL0625/3	22	GFAI5	38

*Numerical Index*

<b>Model #</b>	<b>Page</b>	<b>Model #</b>	<b>Page</b>	<b>Model #</b>	<b>Page</b>
GFAI6	38	GSP093628	2	HR4B	29
GFAI7	38	GSP103026	2	HR4W	29
GFAI8	38	GSP103028	2	HRM4B	38
GH4W	29	GSP103624	2	HRM4W	38
GHR4W	29	GSP103626	2	HS3B/48	30, 35
GK8WF	28	GSP103628	2	HS3W/48	30, 35
GSP033028	2	GSP123026	2	HS4B/48	30
GSP033032	2	GSP123028	2	HS4W/48	30
GSP033628	2	GSP123624	2	HS5B/12	37
GSP033632	2	GSP123626	2	HS5W/12	37
GSP043026	2	GSP123628	2	HS6B/12	37
GSP043028	2	GSP143026	2	HS6W/12	37
GSP043032	2	GSP143624	2	HS7W	37
GSP043626	2	GSP143626	2	HSB4B	30
GSP043628	2	GSP163624	2	HSB4W	30
GSP043632	2	GSPS032428	2	HSF4B	30
GSP053026	2	GSPS032430	2	HSF4W	30
GSP053028	2	GSPS042426	2	HSG5B/12	37
GSP053032	2	GSPS042428	2	HSG5W/12	37
GSP053624	2	GSPS042430	2	HSG6B/12	35
GSP053626	2	GSPS052426	2	HSG6W/12	35
GSP053628	2	GSPS052428	2	HSM4B/24	38
GSP053632	2	GSPS052430	2	HSM4W/24	38
GSP063026	2	GSPS062424	2	HSM5W	38
GSP063028	2	GSPS062426	2	HSM6B	38
GSP063032	2	GSPS062428	2	HSM6W	38
GSP063624	2	GSPS062430	2	HSR4B	30
GSP063626	2	GSPS072424	2	HSR4B/18	30
GSP063628	2	GSPS072426	2	HSR4W	30
GSP063632	2	GSPS072428	2	HSR4W/18	30
GSP073026	2	GSPS072430	2	HUP	33
GSP073028	2	GSPS082424	2	HUPB	33
GSP073624	2	GSPS082426	2		
GSP073626	2	GSPS082428	2	HUPK8F	30
GSP073628	2	GSPS082430	2	HUPK8WA/25	30
GSP083026	2	GSPS102424	2	HUPK8WA/4	30
GSP083028	2	GSPS102426	2	ID0325	25
GSP083624	2	GSPS102428	2	ID0425	25
GSP083626	2	GSPS102430	2	ID0425R6	25
GSP083628	2	GVHAW4	29	ID0425R8	25
GSP093026	2	GVHXW4	29	ID0525	25
GSP093028	2	HJ4W	39	ID0525R6	25
GSP093624	2	HR3B	29, 35	ID0525R8	25
GSP093626	2	HR3W	29, 35	ID0625	25



**Numerical Index**

<b>Model #</b>	<b>Page</b>	<b>Model #</b>	<b>Page</b>	<b>Model #</b>	<b>Page</b>
ID0625R6	25	IRNC04626	9	JOIL1736	10
ID0625R8	25	IRNC04628	9	JOIL1936	10
ID0725	25	IRNC04728	9	JOIL3336	10
ID0725R6	25	IRNC04826	9	JVHAW4	39
ID0725R8	25	IRNC05628	9	LCS04B	20
ID0825	25	IRNC05726	9	LCS05B	20
ID0825R6	25	IRNC05728	9	LCS06B	20
ID0825R8	25	IRNC05826	9	LE081045N	15
ID0925	25	IRNC061026	9	LE081090N	15
ID0925R6	25	IRNC061226	9	LE081245N	15
ID1025	25	IRNC06728	9	LE081290N	15
ID1025R6	25	IRNC06826	9	LE081445N	15
ID1025R8	25	IRNC06926	9	LE081490N	15
ID1225	25	IRNC071026	9	LE081645N	15
ID1225R6	25	IRNC07826	9	LE081690N	15
ID1225R8	25	IRNC07926	9	LE081845N	15
ID1425	25	IRNC081026	9	LE081890N	15
ID1425R6	25	IRNC081226	9	LE082045N	15
ID1425R8	25	IRNC08926	9	LE082090N	15
ID1625	25	IRNC091026	9	LE082245N	15
ID1625R6	25	IRNC101226	9	LE082290N	15
INC03428	9	IRNC101426	9	LE082445N	15
INC03528	9	IRNC101626	9	LE082490N	15
INC03628	9	IRNC121426	9	LE341090	15
INC04528	9	IRNC141626	9	LF310	20
INC04628	9	ISP0410,ISP0425	25	LF325	20
INC04728	9	ISP045	25	LF335	20
INC05628	9	ISP0510,ISP0525	25	LF350BK	20
INC05728	9	ISP055	25	LF410	20
INC05826	9	ISP0610,ISP0625	25	LF425	20
INC06728	9	ISP065	25	LF430	20
INC06826	9	ISP0710	25	LF435	20
INC07826	9	ISP075	25	LF450BK	20
INC07926	9	ISP0810	25	LF510	20
INC081026	9	ISP085	25	LF525	20
INC08926	9	ISP1010	25	LF535	20
INC091026	9	ISP105	25	LF550BK	20
INC121026	9	ISP1210	25	LF610	20
INC121426	9	ISP125	25	LF625	20
IRB43	26	ISP1410	25	LF635	20
IRNC03428	9	ISP145	25	LF650BK	20
IRNC03528	9	JOIL1236	10	LF710	20
IRNC03628	9	JOIL1636	10	LF725	20
IRNC04528	9	JOIL1730	10	LF735	20

*Numerical Index*

<b>Model #</b>	<b>Page</b>	<b>Model #</b>	<b>Page</b>	<b>Model #</b>	<b>Page</b>
LF810	20	MC4	26	PDPI0425	25
LF825	20	MC450	26	PDPI0525	25
LF835	20	MC525	26	PDPI0625	25
LFL04B	20	MC625	26	PDPI0725	25
LFL05B	20	MC7	26	PDPI0825	25
LFL06B	20	MC8	26	PDPI1025	25
LGMS04B	20	MCX4	26	PDPI1225	25
LGMS05B	20	MSC4100	26	PDPI1425	25
LGMS06B	20	MSCX4	26	PDPI1625	25
LK325	19	MVCX815	27	PBP62424	17
LK335	19	OAB44	16	PBP72424	17
LK425	19	OAB55	16	PBP82424	17
LK430	19	OAB65	16	PH38W	23
LK435	19	OAB66	16	PH420W	23
LK440	19	OAB77	16	PH45W	23
LK445	19	OARB4106	16	PH48W	23
LK525	19	OARB4126	16	PLN20134826	14
LK530	19	OEB55	16	PLN20144826	14
LK535	19	OEB56	16	PLN20154826	14
LK540	19	OEB66	16	PLN20164826	14
LK5525	19	OEB67	16	PLN20184826	14
LK5535	19	OEB77	16	PLN20214826	14
LK625	19	OSB66	16	PLN4P20134826	14
LK630	19	OSB77	16	PLN4P20144826	14
LK635	19	OSTH4104	16	PLN4P20164826	14
LK725	19	OSTH4105	16	PLN4P20184826	14
LK735	19	OSTH4106	16	PLN4P20214826	14
LK825	19	OSTH4126	16	PLUG0328	4
LK835	19	OSTH6104	16	PLUG0428	4
LKFP325	19	OSTH6105	16	PLUG0528	4
LKFP335	19	OSTH6106	16	PLUG0628	4
LKFP425	19	OSTH6107	16	PLUG0728	4
LKFP435	19	OSTH6126	16	PLUG0826	4
LRC3	20	OSTH6127	16	PLUG0926	4
LRC4	20	OVELBFT690	16	PLUG1026	4
LRC5	20	OVELBFT690	16	PLUG1226	4
LRC6	20	OVELBFT790	16	PLUG1426	4
LRC7	20	OVELBVT545	16	PLUG1626	4
LRC8	20	OVELBVT590	16	PLUG1826	4
LTF	30	OVELBVT645	16	PLUG2026	4
MAC36024	22,31	OVELBVT690	16	PO410030	16
MBC3	26	OVELBVT745	16	PO410030STD	16
MBC4	26	OVELBVT790	16	PO4530STD	16
MC325	26	PDPI0325	25	PO510030	16

*Numerical Index*

<b>Model #</b>	<b>Page</b>	<b>Model #</b>	<b>Page</b>	<b>Model #</b>	<b>Page</b>
PO510030STD	16	PP12426B	1	RED06428	9
PO5530STD	16	PP12428B	1	RED06528	9
PO610030	16	PP12526B	1	RED07428	9
PO610030STD	16	PP12528B	1	RED07528	9
PO6530STD	16	PT0810N	12	RED07628	9
PO710030	16	PT0812N	12	RED08526	9
PO710030STD	16	PT0814N	12	RED08626	9
PO7530STD	16	PT0816N	12	RED08726	9
PO810030	16	PT0818N	12	RED09726	9
PP031030BSTD	1	PT0820N	12	RED09826	9
PP03530B	1	PT0822N	12	RED10626	9
PP03530BSTD	1	PT0824N	12	RED10726	9
PP041030B	1	PT088N	12	RED10826	9
PP041030BSTD	1	RAC0810A	12	RED10926	9
PP04528B	1	RAC0812A	12	RED121026	9
PP04530ASTD	1	RAC0814A	12	RED12826	9
PP04530B	1	RAC0816A	12	RED141026	9
PP04530BSTD	1	RAC0818A	12	RED141226	9
PP051030B	1	RAC0820A	12	RED161224	9
PP051030BSTD	1	RAC0822A	12	RED161426	9
PP05526B	1	RAC0824A	12	REDU810N	14
PP05528B	1	RAC088A	12	REDU81228N	14
PP05530ASTD	1	RACA04	33	REDU812N	14
PP05530B	1	RACA05	33	REDU814810N	14
PP05530BSTD	1	RACA06	33	REDU814N	14
PP061030B	1	RACA07	33	REDU816812N	14
PP061030BSTD	1	RACA08	33	REDU816N	14
PP06526B	1	RACA09	33	REDU818814N	14
PP06528B	1	RACA10	33	REDU818N	14
PP06530ASTD	1	RACA12	33	REDU820N	14
PP06530B	1	RACA14	33	REDU822N	14
PP06530BSTD	1	RAE08221423	14	REDU824N	14
PP071030BSTD	1	RAE08241423	14	REDU88N	14
PP07526B	1	RAE10221423	14	RF31003	27
PP07528B	1	RAE10241423	14	RF31003B	27
PP07530B	1	RAF60	10	RF31028	27
PP07530BSTD	1	RBOX106	8	RF31028B	27
PP08526B	1	RC	38	RF31036B	27
PP08528B	1	RCDV	38	RF41003	27
PP08530B	1	RCDVT	38	RF41003B	27
PP08530BSTD	1	RCT	38	RF41028	27
PP10526B	1	RED04328	9	RF41028B	27
PP10528B	1	RED05328	9	RF41036B	27
PP10530B	1	RED05428	9	RF41203	27

*Numerical Index*

<b>Model #</b>	<b>Page</b>	<b>Model #</b>	<b>Page</b>	<b>Model #</b>	<b>Page</b>
RF41203B	27	RVMAB4	38	SE081290N	15
RF41228	27	RVMAW4	38	SE081445N	15
RF41228B	27	SADD328	10	SE081490N	15
RK8W	34	SADD428	10	SE081645N	15
RK8WF	29	SADD528	10	SE081690N	15
RMB24603	28	SADD628	10	SE081845N	15
RMB30603	28	SADD728	10	SE081890N	15
RMB14603	28	SADD826	10	SE082045N	15
RMB14803	28	SBK5W4	35	SE082090N	15
RMB24803	28	SCLE04828	10	SE082245N	15
RMB30803	28	SCLE04830	10	SE082290N	15
RMF41036	28	SCLE06026	10	SE082445N	15
RMF41003	28	SCLE06028	10	SE082490N	15
RMF31036	28	SCLE06030	10	SE08845N	15
RMF31003	28	SCLE09628	10	SE08890N	15
RMF41003G	28	SCLE09630	10	SE341045	15
RMF41036G	28	SCLE12026	10	SK5WF	29
RMF31003G	28	SCLE12028	10	SK8WF	29,34
RMF31036G	28	SCLE12030	10	SLDA04	4
RMRA14603	28	SD0425	24	SLDA05	4
RMRA24603	28	SD0425R6	25	SLDA06	4
RMRA30603	28	SD0425R8	25	SPOD04	5
RMRA24803	28	SD0525	24	SPOD05	5
RMRA30803	28	SD0525R6	24	SPOD06	5
RMRA14803	28	SD0525R8	25	SPOD07	5
RS14603	27	SD0625	24	SPOD08	5
RS14803	27	SD0625R6	24	SPOD09	5
RS30803	27	SD0625R8	25	SPOD10	5
RVH3W	29	SD0725	24	SPOD12	5
RVH4B	29	SD0725R6	24	SPOD14	5
RVH4W	29	SD0725R8	25	SPOD16	5
RVH4W	29	SD0825	24	SPODC04	5
RVHAB3	35	SD0825R6	24	SPODC05	5
RVHAB4	29	SD0825R8	25	SPODC06	5
RVHAB4/18	29	SD1025	24	SPODC07	5
RVHAW3	35	SD1025R6	24	SPODC08	5
RVHAW4	29	SD1025R8	25	SPODC10	5
RVHAW4/18	29	SD1225	24	SPODC12	5
RVHCW4	29	SD1225R6	24	SPON04	5
RVHUB4	29	SD1225R8	25	SPON05	5
RVHUW4	29	SD1425R6	24	SPON06	5
RVHXB4	29	SE081045N	15	SPON07	5
RVHXW3	35	SE081090N	15	SPON08	5
RVHXW4	29	SE081245N	15	SPON10	5

**Numerical Index**

<b>Model #</b>	<b>Page</b>	<b>Model #</b>	<b>Page</b>	<b>Model #</b>	<b>Page</b>
SPON12	5	TARR6,TARR6DB	5	TWC066428	11
SPON14	5	TEE0328	11	TWC066430	11
SPON16	5	TEE0428	11	TWC066826	11
ST0445	5	TEE0528	11	TWC0726	11
ST0490,ST0490DB	5	TEE055428	11	TWC0728	11
ST0545	5	TEE0628	11	TWC0826	11
ST0590,ST0590DB	5	TEE066430	11	TWC0881028	11
ST0645	5	TEE066530	11	TWC0881228	11
ST0690,ST0690DB	5	TEE0926	11	TWC088428	11
ST0790	5	TEE1024	11	TWC088628	11
ST0890	5	TEE1026	11	UB24105	8
ST1090	5	TEE108828	11	UB24106	8
ST1290	5	TEE1224	11	UB24125	8
ST1490	5	TEE1226	11	UB24126	8
STHE3410	13	TEE1424	11	UB24146	8
STRAP120	10	TEE1426	11	UB3104	8
SVH3B	30	TEE1624	11	UB3105	8
SVH3W	30	TEE1824	11	UB3105L	8
SVH4B,SVH414B	30,37	TF420	37	UB3106	8
SVH4W,SVH414W	30,37	TF4	33,34	UB34104	8
SVHAB3	30,35	TFG4	34,37	UB34105	8
SVHAB4	30	TFG6	34,37	UB34106	8
SVHAB5	37	TFGX4	27,34,37	UB34107	8
SVHAB6	37	TFGX6	27,34,37	UB34108	8
SVHAW3	30,35	TFK6	34	UB4104	8
SVHAW4	30	TT04,TT04DB	5	UB4105	8
SVHAW4/18	30	TT05,TT05DB	5	UB4105L	8
SVHAW5	37	TT05B	5	UB4106	8
SVHAW6	37	TT06,TT06DB	5	UB4106L	8
SVHAW6/8	37	TT06B	5	UB4107	8
SVHCB4	30	TT07	5	UB4108	8
SVHCW4	30	TT08	5	UB4125	8
SVHUB4	30	TT10	5	UB4126	8
SVHUW3	30,35	TT12	5	UB4127	8
SVHUW4	30	TVK4	37	UB4128	8
SVHXW4	30	TVK6	37	UB4146	8
SVMAB5,SVMAB514	37,38	TWC0426	11	UB4147	8
SVMAB6,SVMAB614	37,38	TWC0428	11	UB4148	8
SVMAW4,SVMAW414	37,38	TWC044628	11	UB6105	8
SVMAW5,SVMAW514	37,38	TWC0526	11	UB6106	8
SVMAW6,SVMAW614	37,38	TWC0528	11	UB6107	8
SWR310	23	TWC0626	11	UB6108	8
SWR320	23	TWC0628	11	UB6126	8
TARR5,TARR5DB	5	TWC064428	11	UB6127	8

Numerical Index

Model #	Page	Model #	Page	Model #	Page
UB6128	8	WYC077428	12		
UB6148	8	WYE033328	12		
UBGBB	34	WYE034328	12		
UBGW	34	WYE044428	12		
UBGWB	34	WYE055328	12		
UBGWL	34	WYE055526	12		
UBST24106	8	WYE055528	12		
UBST24126	8	WYE056528	12		
UBST34104	8	WYE066526	12		
UBST34105	8	WYE066626	12		
UBST34106	8	WYE066628	12		
UBST34107	8	WYE066828	12		
UBST34108	8	WYE077726	12		
UBST34126	8	WYE077728	12		
VEDD03	4	WYE088826	12		
VEDD04	4	WYE1024	12		
VEDD05	4	WYE1224	12		
VEDD06	4				
VEDD07	4				
VEDD08	4				
VEDD10	4				
VEDD12	4				
VHBM3B	30				
VHS3B	30				
VHS3W	30				
VHS5GW	37				
VHS6GW	37				
VHSB4W	30				
VHSM4W	38				
WACA4	32				
WACA5	32				
WACA6	32				
WYC034328	12				
WYC045326	12				
WYC045328	12				
WYC045426	12				
WYC045428	12				
WYC046426	12				
WYC055426	12				
WYC055428	12				
WYC056428	12				
WYC066426	12				
WYC066428	12				
WYC077426	12				

**DEFLECTO AIR DISTRIBUTION**  
**AND VENTING PRODUCTS.**

REMIT-TO ADDRESS:  
 221 BUNTING ROAD, ST.CATHARINES, ON L2M 3Y2 CANADA  
 PHONE: 905.641.8872 EXT. 11 or 1.800.665.4328 EXT. 11  
 FAX: 905.641.2696

**PURCHASE ORDER**

RECORD PURCHASE ORDER NUMBER ON ALL CORRESPONDENCE	
DATE ORDERED	PURCHASE ORDER NUMBER

CUSTOMER BILLING ADDRESS:

CUSTOMER SHIPPING ADDRESS:

SHIP VIA		F.O.B		TERMS		DELIVERY DATE	
BUYER		CONTACT PHONE NUMBER				COMMENT:	
	QUANTITY ORDERED	ITEM CODE	DESCRIPTION		U/M	ITEM COST	EXT. AMOUNT - \$
1							
2							
3							
4							
5							
6							
7							
8							
9							
10							
11							
12							
13							
14							
15							

\_\_\_\_\_ AUTHORIZED SIGNATURE