

Tessonics

RSWA Remote Control

User's Manual



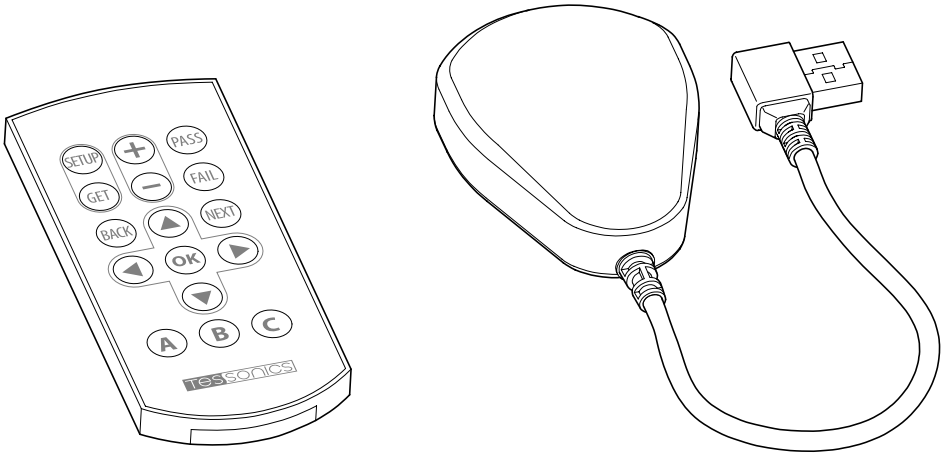
Tessonics Inc.
1983 Ambassador Dr.,
Windsor, Ontario
N9C 3R5, Canada
www.tessonics.com

Remote Control – Part No: R03-R1

Receiver – Part No: R03-R2

Setting Up the Remote

The package contains the remote and the receiver module.



When the remote is shipped, the battery is insulated by a protective film. Pull the film out to make the remote operational.

To start using the remote, power on the RSWA unit and wait until it boots up. Plug the USB receiver into the USB port on the right hand side of the RSWA unit. When you plug the receiver in for the first time, please allow 5–10 seconds for hardware initialization, then proceed to the pairing procedure.

Pairing the Remote

The pairing procedure will set up the receiver to be controlled by a specific remote. In the environment with multiple RSWA units and remotes, this allows to choose specifically which remote controls which RSWA.

To pair the remote control with the receiver:

- Make sure the receiver is plugged into the RSWA and that RSWA is running;
- Bring the remote within a few inches from the receiver, push and hold any button on the remote for 5 seconds. The LED on the remote will flash rapidly during the pairing procedure;
- Release the button and test the remote with RSWA applications.

If you need to pair a remote to a different RSWA, remove the battery from the remote for about 1 minute. This will reset it to the original unpaired state. Then put the battery back and repeat the pairing procedure with the different receiver.

Button Assignments

Button	Description
Setup	Perform Setup procedure
Get	Get RSWA measurement
+/-	Increase/decrease the diameter of the circle
Pass/Fail	Make a decision on weld quality
Next	Move to next weld or unit
Back	Exit from menu or dialog
Ok	Confirm selection in menus and dialogs
▲/▼	Up and down cursor keys; in Array Explorer's main window: Navigate up and down in the weld list view
◀/▶	Left and right cursor keys; in Array Explorer's main window: Navigate left and right in recent measurements
A	Opens drop down menu in A-scan view (may be changed in future software releases)
B	Toggles between front and back cells in weld list view (may be changed in future software releases)
C	Toggles between automatic and manual circle measurements (may be changed in future software releases)

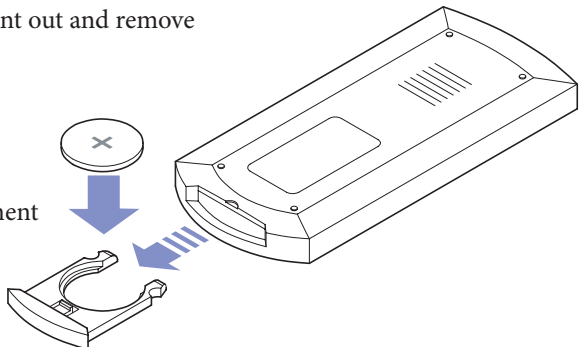


Replacing the Battery

This remote needs a battery to operate. Replace the battery when needed with CR2025 battery.

To replace the battery:

- Pull the battery compartment out and remove the old battery
- Insert the replacement battery with the positive side facing up
- Close the battery compartment
- If necessary, perform the pairing procedure



Regulatory Compliance Statements

FCC Information

This device complies with Part 15 of the FCC Rules. Operation is subject to the following two conditions: (1) This device may not cause harmful interference, and (2) this device must accept any interference received, including interference that may cause undesired operation.

CAUTION: Changes or modifications not expressly approved by Tessonics Inc. could void the user's authority to operate this device.

NOTE: This equipment has been tested and found to comply with the limits for a Class A digital device, pursuant to Part 15 of the FCC Rules. These limits are designed to provide reasonable protection against harmful interference when the equipment is operated in a commercial environment. This equipment generates, uses, and can radiate radio frequency energy and, if not installed and used in accordance with the instruction manual, may cause harmful interference to radio communications. Operation of this equipment in a residential area is likely to cause harmful interference in which case the user will be required to correct the interference at his own expense.

Industry Canada Information

This Class A digital apparatus complies with Canadian ICES-003

Cet appareil numérique de la classe A est conforme à la norme NMB-003 du Canada

Operation is subject to the following two conditions: (1) this device may not cause interference, and (2) this device must accept any interference, including interference that may cause undesired operation of the device.

The Term "IC:" before the certification/registration number only signifies that the Industry Canada technical specifications were met.

European Community Compliance Information

Warning: This is a Class A product. In a domestic environment this product may cause radio interference in which case the user may be required to take adequate measures.