

Introduction

Cellink's Bluetooth USB Adapter is a Bluetooth enabler, that enables your desktop or notebook computer to connect wirelessly to any other Bluetooth enabled computers and devices. It allows a working range of more than 33 feet with a 723 Kbps data rate transmission, and complies with Bluetooth 1.1 and USB 1.1 specifications.

Cellink's Bluetooth USB adapter is an ideal solution for home and mobil networking needs. It is easy to install and use for the connectivity to such as cellular phones, PDAs, printers, computers, Bluetooth keyboards, Bluetooth Mouses, etc.

Microsoft and Windows are registered trademarks of Microsoft Corporation.

IBM is a registered trademark of International Business Machines, inc.

Maccintosh, G3/G4 and iMac are registered trademarks of apple Computer.

Table of Contents

Package Contents.....	03
Overview.....	04
System Requirement.....	06
Installation.....	07
- Software Installation.....	07
- Hardware Installation.....	11
Uninstallation.....	14
Reinstallation.....	14
Pairing Guide.....	15
- What is Pairing?.....	15
- How to pair devices?.....	16
- How to unpair devices?.....	18
Operation.....	19
- How to connect to a Cellular Phone.....	19
- How to connect to a PDA.....	21
- How to connect to a Network Access.....	23
- How to add Bluetooth to your Mac.....	25
- File Shairing.....	28
- How to Send/Receive files?.....	28
- How to establish Internet Shairing?.....	28
- How to use the Internet Shairing Connection.....	33
- How to do synchronization?.....	33
Technical Support.....	34
Specification.....	35
FCC Safety Statement.....	36
Regulatory Information.....	37
Warranty.....	38

This package contains:

- . 1 CELLINK Bluetooth USB Adapter (BTA-3000)
- . 1 Installation CD
- . 1 User Manual

The Bluetooth Installation CD contains the following:

- . Setup programs and drivers for Microsoft Windows 98 SE, Windows Me, Windows 2000, and Windows XP
- . README.TXT file with updated information about your Bluetooth USB Adapter
- . Bluetooth USB Adapter User Manual

Overview

Bluetooth is a low-power wireless networking standard, which uses short radio links to allow electronic devices to communicate with each other without using cables.

The following services are supported by Bluetooth technology:

- . Synchronize your Bluetooth PDA with your computer.
- . Send your business card to anyone who has a Bluetooth enabled device.
- . Send or receive files to or from anyone who has a Bluetooth enabled device.
- . Send an e-mail without being wired to the network.
- . Dial up to Internet on your computer over your Bluetooth cellular phone.
- . Send a fax from your computer over your Bluetooth cellular phone.
- . Chat with anyone who has a Bluetooth enabled computer.
- . Play an one-on-one serial game without a cable.

Most Bluetooth-enabled devices may act as:

- . A Bluetooth server - can provide one or more services, such as access to the Internet, or to other Bluetooth devices.
- . A Bluetooth client - can use the services provided by Bluetooth servers.

* Bluetooth devices that can act as both server and client, and can often do both at the same time.

Bluetooth Technology supports:

- . Windows 2000
- . Windows XP
- . Mac OS X
- . Windows 98 SE/Me (only as a client. For used as a server, it needs an Internet sharing software such as Win Route Lite. It is available on www.kerio.com, which You may get access through Cellink's Website.)

System Requirement

System Requirements:

- . Notebook or desktop computers, with 500 Mhz Cpu or higher, 256MB RAM or higher, 50MB free of hard disk space, and with a free USB port
- . Mac OS 10.1.4 or later
- . Windows 2000, XP
- . Windows 98 SE/Me (only as a client. For used as a server, it requires an Internet sharing software such as Win Route Lite. It is available on www.kerio.com , which You may get access through Cellink's Website.)

Installation

Software Installation

Note : Do not plug your Bluetooth USB Adapter into USB port until you have completed the software installation as the following:

1. With the computer on and Windows 98 Se/ME, 2000 or XP running, insert the Bluetooth Installation CD into CD/DVD drive. The auto-start feature starts the installation. If auto-start is disabled on your computer, click Start>Run and type d:\setup.exe (where d: is your CD-ROM drive). The Bluetooth InstallShield Wizard will appear. Please Click "Next" button.



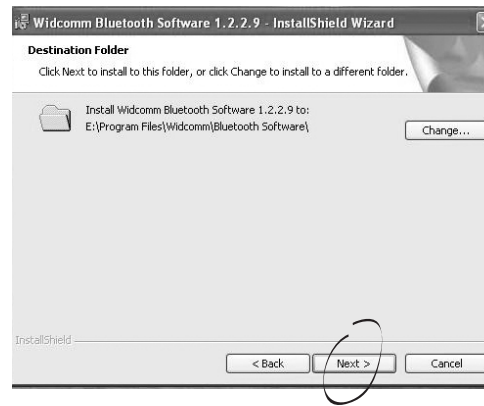
2. The License Agreement will appear. Please read and agree with the agreement by checking "I accept the terms in the license agreement" and click "Next".



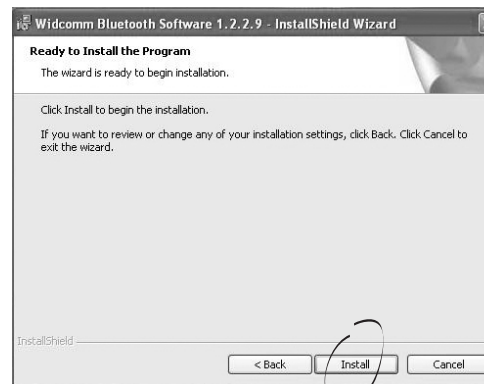
3. Define the Device Name and specify the Device Type (Desktop or Laptop) and click "Next"



4. Click "Next" to install the default directory, or click "Change" to install a different directory.



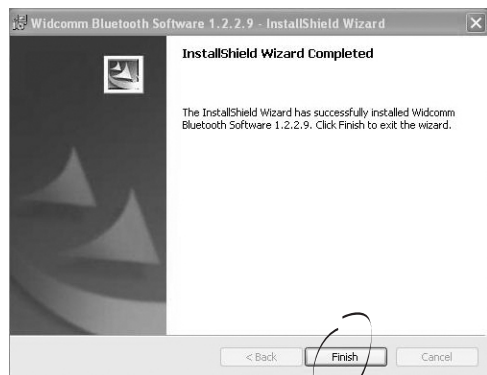
5. Click "Install" to start the Installation.



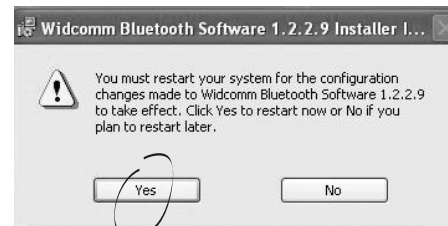
6. The Installation process may take a few minutes.



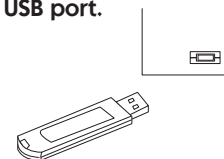
7. Once the Installation has completed, click "Finish".



8. Click "Yes" to restart Windows for the Bluetooth Adapter to work properly.



9. Once the computer has restarted, plug the Bluetooth USB Adapter into an available USB port.



The operating system will recognize the Bluetooth USB Adapter and will prompt that a new hardware has been found. Click "Install the software automatically" and click "Next".



Note : The installation process of the Bluetooth client drivers will repeat until all Bluetooth clients have been installed.