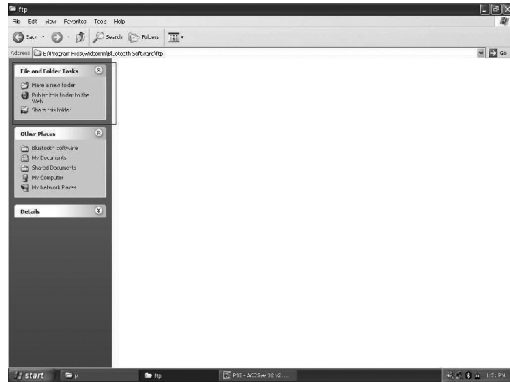


Network Resource Sharing

Your Bluetooth enabled computers are ready to share the resources between one and another, such as File Sharing, Internet Sharing and Synchronization.

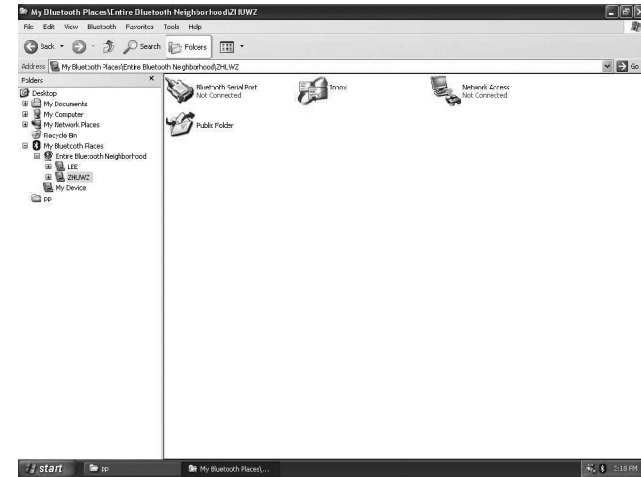
File Sharing

Right-click on Bluetooth Icon, then click on Setup>Configuration>Information Exchange. On My Shared Directory of File Transfer (D:\Program Files\Widcomm\Bluetooth Software\ftp), click on Browse and select a FTP Root Directory for shared files.



Files located in shared folder can be accessed by other Bluetooth enabled devices.

For accessing files located in another computer, double click on the device's name in My Bluetooth Place. You will see what services are offered by the device. Double-clicking on Public folder will get access to all shared files located in the folder.



How to Send/Receive Files?

Right-click on the file that you want to send, and select Send>Bluetooth>Name of Bluetooth Device.

If the Bluetooth enabled computers are Not paired when receiving a file, authentication will be executed for the file transfer by entering a Pass Key and by pressing Accept as soon as the pop-up box appears.

If the two computers ARE paired, it won't need to pair again everytime when sending/receiving files.

How to establish Internet Sharing ?

Before setup an Internet sharing, make sure there is at least one Bluetooth computer has access to the Internet.

IMPORTANT:

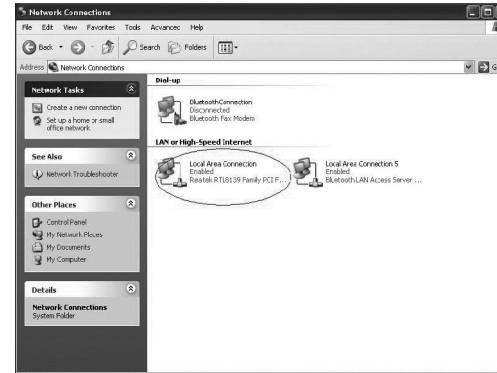
Internet Connection Sharing is currently ONLY allowed with Windows 2000 and XP. Windows 98SE or Me users can only access Internet through a Bluetooth enabled computer with either Windows 2000 or XP installed.

A Bluetooth enabled computer running either Windows 98 SE or Me is not able to run as Internet Server. In order to run as a Sever, Windows 98 SE/Me users will need to install an Internet Sharing Software, such as Win Route Lite. Please go to Cellink's Web site to get the connection to the relative Web site for the software.

For Windows 2000/XP

Note: The user must have administrative rights in order to enable Internet Sharing.

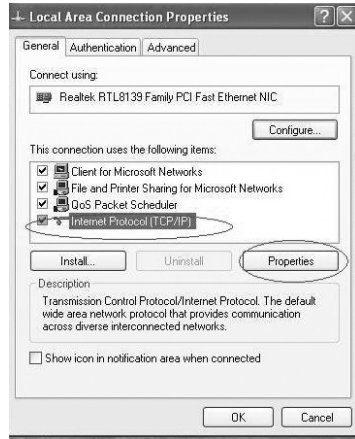
1. Prompt to Start>Settings>Network and Dial-Up Connections
2. Right-click the Network Connection to access the Internet.



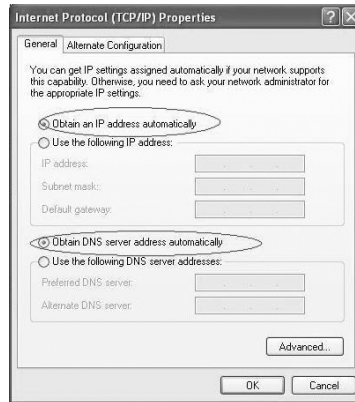
3. Click on Properties.



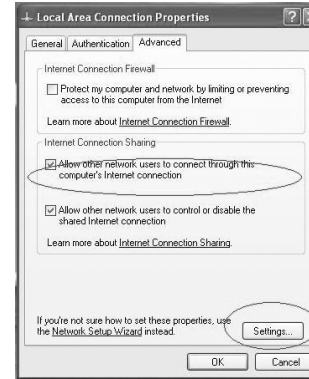
4. Select "Internet Protocol (TCP/IP)" and click on "properties".



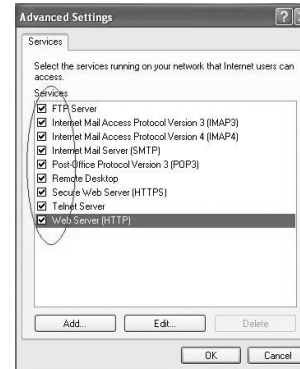
5. Make sure that the IP and DNS Server Address are obtained automatically.
6. Click on "OK". It will appear the "Local Area Connection Properties" window again.



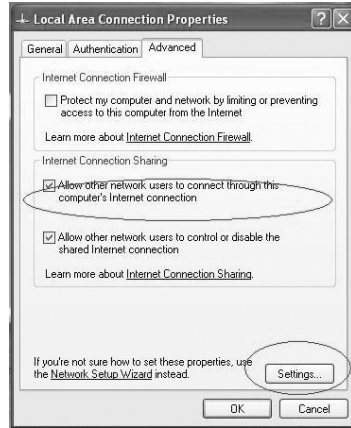
7. Click on the "Advanced" Tab.
8. Make sure that the Internet Connection Option is checked.
9. Click on Settings.



10. Make sure that all items on the Advanced Settings Screen are checked. Once all setting are set and verified, the Internet Connection will be shared among up to seven (7) Bluetooth enabled devices.
11. Click on "OK".



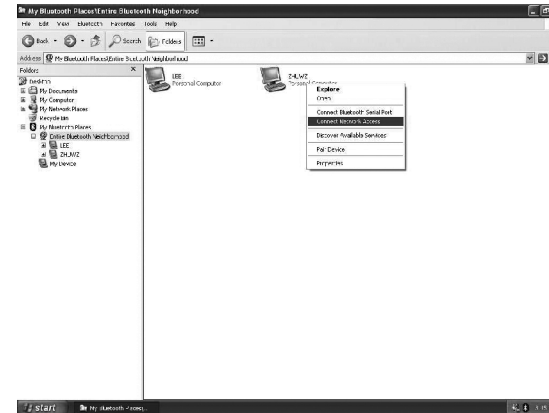
12. Click on "OK" to close the Local Area Connection Properties window.



How to use the Internet Sharing Connection?

After Internet Sharing is established, the client can share Internet access by the following steps:

1. In "My Bluetooth Places" find the computer that has access to the Internet.
2. Right-click on the computer name and select "Connect Network Access".
3. Once selected, your computer will go through an authentication process and establish the connection with the other one.
4. The computer that has Internet access will act as the server (Only with Windows 2000/XP. Computers with Windows 98SE/Me installed will need an Internet Sharing Software such as Win Route Lite in order to act as a server.) It allows to share its Internet connection to your linked Bluetooth computer.



How to do Synchronization ?

Please refer to the manufacturer's manual how to synchronization data with your cellular phone, PDA, or computer (e.g. Outlook Synchronization.)