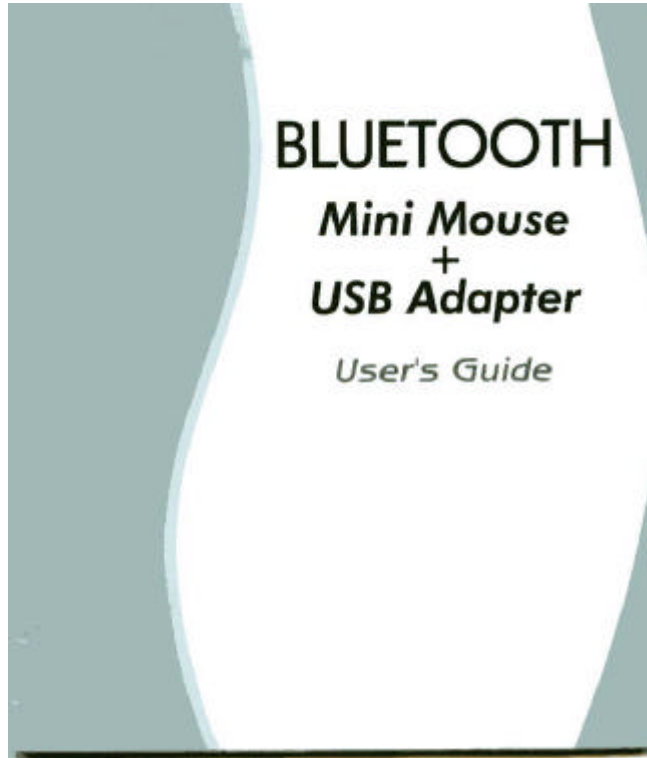


Bluetooth Mini Mouse BTM-5963



Introduction

The 2.4GHz Bluetooth Wireless Optical Mouse and Bluetooth USB charging adapter can create a flexible, convenient and wireless working environment. The optical mouse with ergonomic design offers high frequency penetration, low interference, and omni-directional signal transmission. Employing reliable 2.4GHz Bluetooth wireless technology, the Bluetooth Optical Mouse can be positioned up to 10 meters away from the PC in all directions, even with objects placed between the mouse and the adapter. For example, a Bluetooth-enabled printer in the radio range can receive documents from the computer wirelessly and print the documents.

Bluetooth USB charging Adapter is a 2-in-one multifunctional adapter which acts as a Bluetooth enabler and power charger. It enables your desktop or laptop to connect wirelessly to any other Bluetooth enabled computers and devices and never worry about batteries run out. It allows a working range up to 10 meters (33 feet) with a 723 Kbps data rate transmission, and complies with Bluetooth 1.1 and USB 1.1 specifications. This package is an ideal solution for home and mobile networking needs and provides an easy-to-operate users' interface connecting wirelessly to any Bluetooth enabled cellular phones, PDAs, printers, computers, keyboards, mice etc.

Content

Package Contents

Overview

System Requirements

Software Installation

Hardware Installation

- Install Bluetooth USB charging Adapter

- Install battery for mouse

- Pairing for mouse

Technical Support

Specification

FCC Safety Statements

Regulatory Information

Warranty

Package Contents

- Bluetooth USB Charging Adapter
- Bluetooth Mouse
- Installation CD
- User' s Guide

Bluetooth Installation CD contains:

- Widcomm v1.4 driver for Bluetooth USB Charging Adapter
- BTW User' s Guide

Overview

Bluetooth is a low-power-consumption wireless networking standard, which uses short radio links to allow electronic devices to communicate with each other without cables.

The following services are supported by Bluetooth technology:

- Synchronize your Bluetooth PDA with your computer.
- Send your business card to anyone who has a Bluetooth enabled device.
- Send or receive files to or from anyone who has a Bluetooth enabled device.
- Send an e-mail without being wired to the network.
- Dial up to internet on your computer over your Bluetooth cellular phone.
- Send a fax from your computer over your Bluetooth cellular phone.
- Chat with anyone who has a Bluetooth enabled computer.
- Play a one-on-one serial game without a cable.

Most Bluetooth enabled devices may act as:

- A Bluetooth host – can provide one or more services, such as access to the Internet or to other Bluetooth devices.
- A Bluetooth client – can use the service provided by Bluetooth servers.
- Bluetooth devices can act as both host and client, and do both at the same time.

System Requirements

- CPU: Intel Pentium III 500MHz or above.
- System Memory: 256MB or more.
- Hard disk space: at least 50MB.
- OS: Windows 98SE/Me/2000/XP
- MAC OS 10.1.4 or later
- A free USB port, USB 1.1 compliant.
- CD-ROM Drive.

Software Installation

Note: Do not plug your Bluetooth USB Charging Adapter into USB port until you have completed the software installation as the following:

1. Insert the driver CD into a CD-ROM drive. The setup program will start automatically.
2. In case the drive doesn't support auto-run function, please find "setup.exe" file at the root of driver CD. Double click it to start installation process.

(Note: the following pictures will be a little bit different if you are installing on Windows XP)



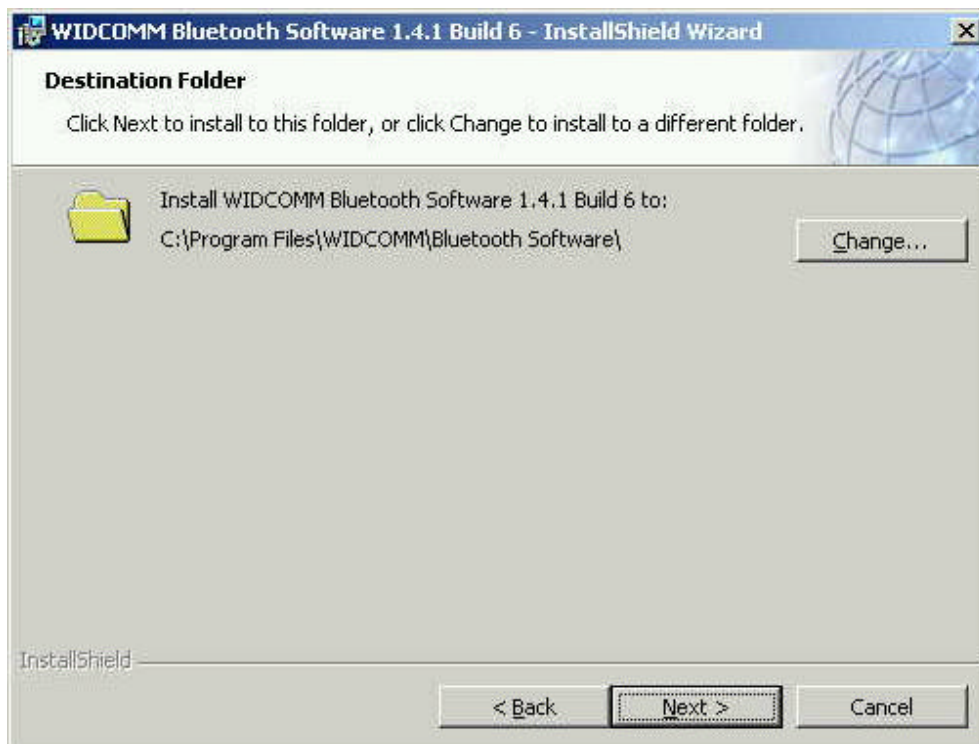
(d01.jpg)

3. The license Agreement will appear. Please read and agree with the agreement by checking "I accept the terms in the license agreement" and click "Next".



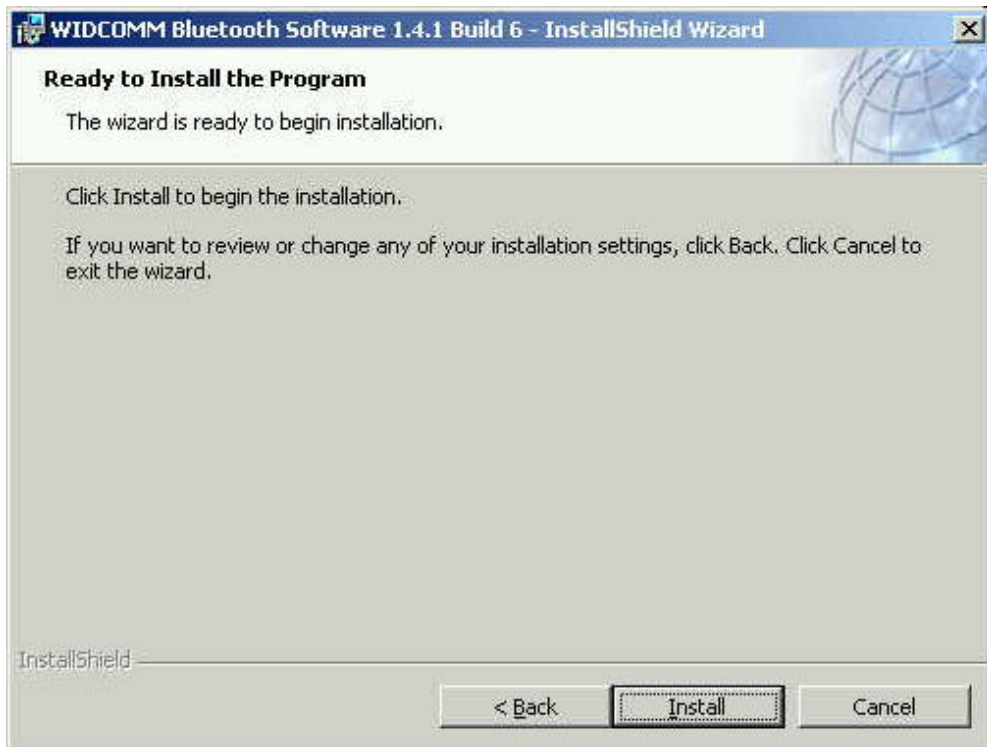
(d02.jpg)

4. Click "Next" to install the default directory, or click "Change" to install in a different directory.



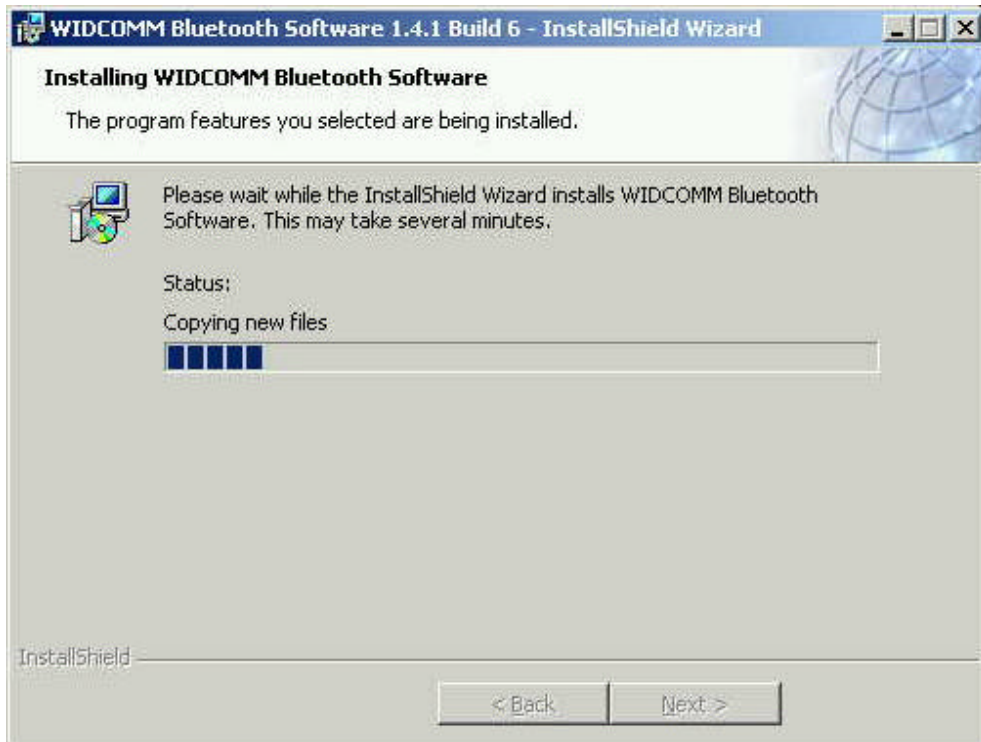
(d03.jpg)

5. Click "Install" to start the installation.



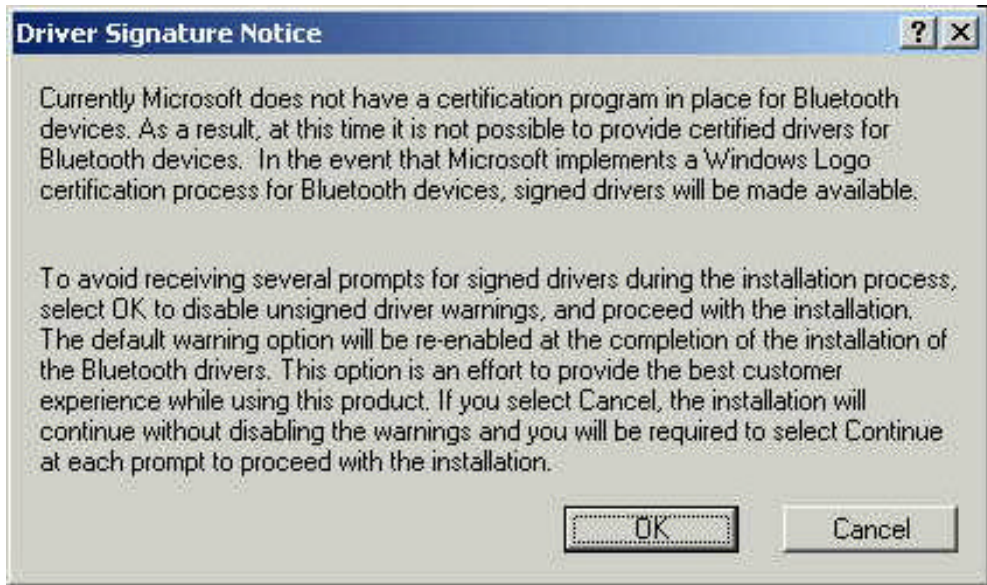
(d04.jpg)

6. The installation process may take a few minutes.



(d05.jpg)

7. A notice of Driver Signature from Windows system may appear. Please click “OK” to continue the installation.



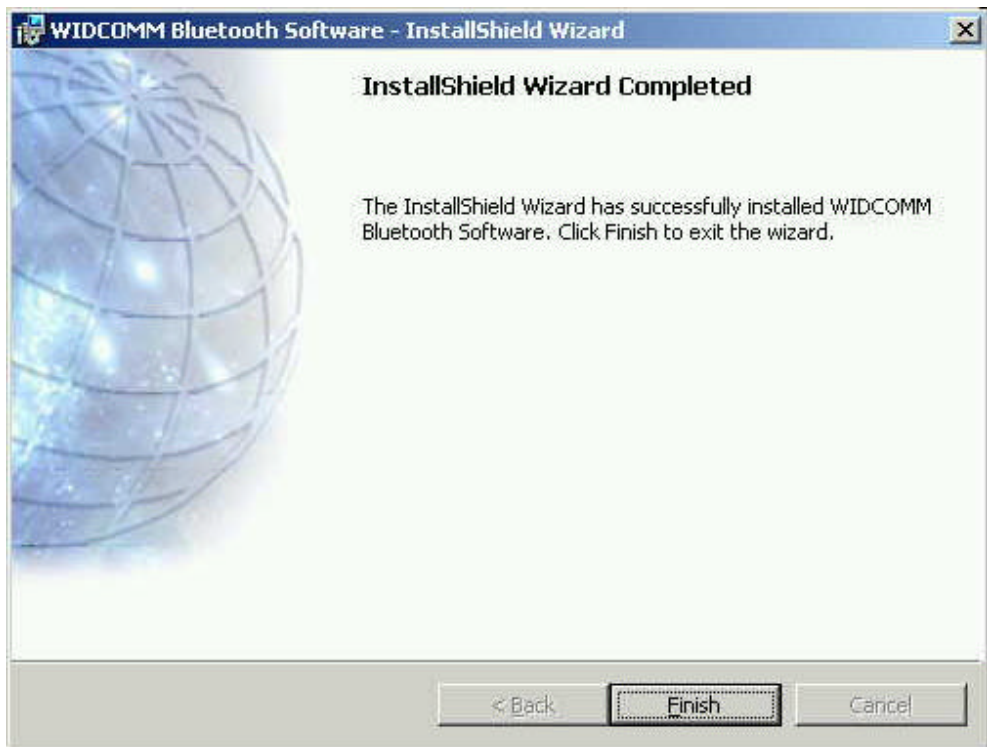
(d08.jpg)

8. Installation program will ask you to plug in Bluetooth Adapter. Please click “Cancel” to skip it.



(d09.jpg)

9. Once the installation has completed, click “Finish”.



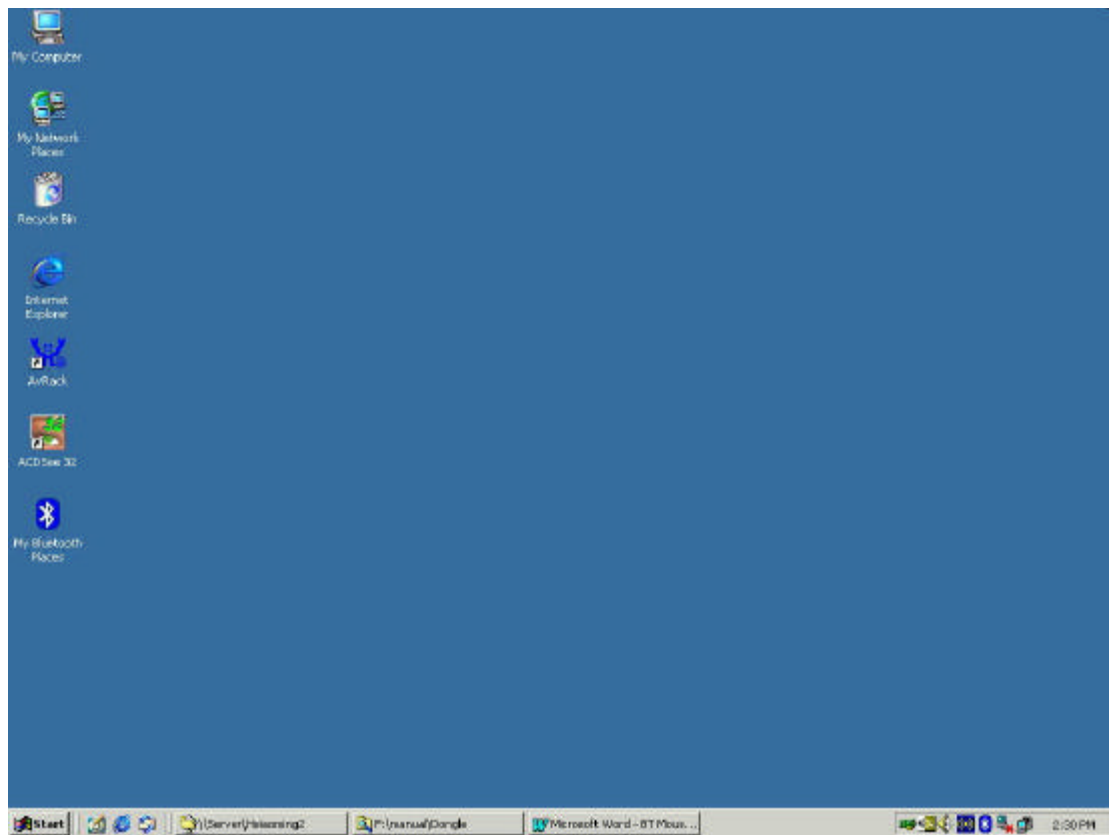
(d06.jpg)

10. You will be asked to restart system. Click “Yes” to restart.



(d07.jpg)

11. You will see a shortcut on Windows desk and a Bluetooth Logo icon on the task bar after system re-started.

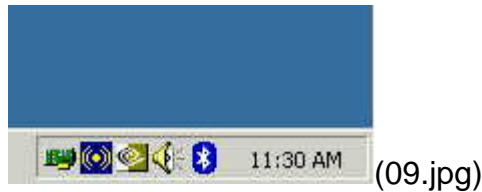


(10.jpg)

Hardware Installation

Plug-in the Bluetooth USB charging adapter

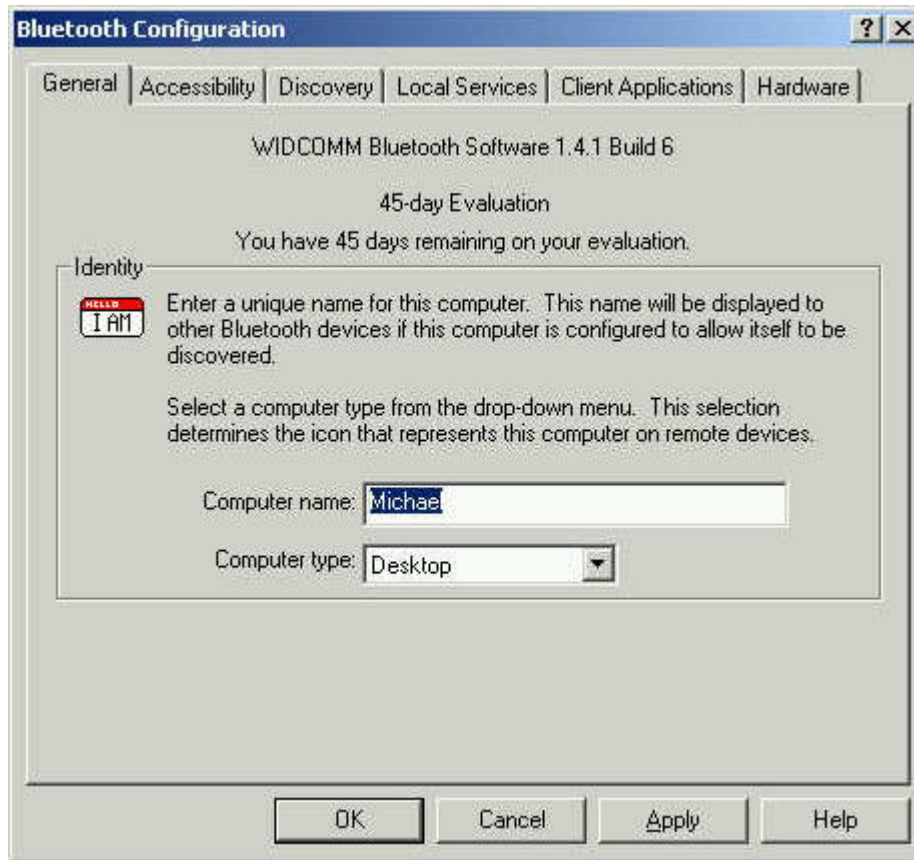
1. Make sure you complete the software installation before you plug in Bluetooth USB charging adapter.
2. Plug the Bluetooth USB charging adapter into a free USB port of PC. System will detect the Adapter and start to install driver automatically. The Bluetooth logo on task bar will change color from red to white.



3. To enable the Bluetooth USB charging Adapter by double clicking the short cut on the desk or the icon on the task bar. System will initiate a Bluetooth configuration wizard. Follow the on screen procedures to complete configuration setup. Click “next”.



4. Give a name of your computer and select type of your computer.



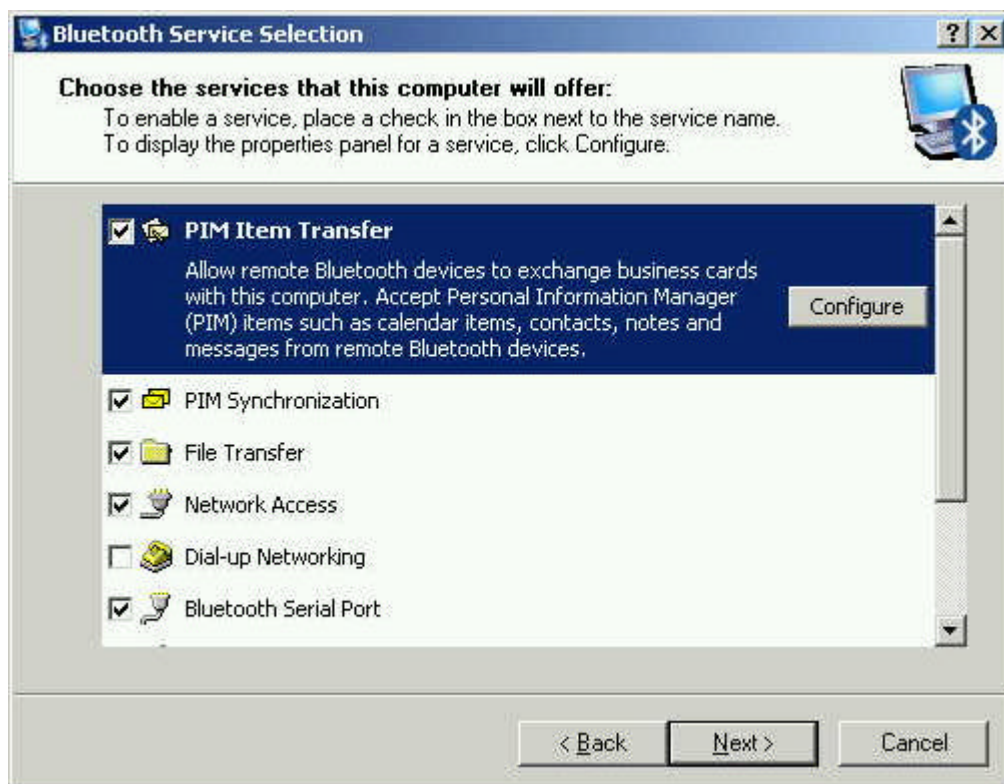
(02.jpg)

5. Click "Next"



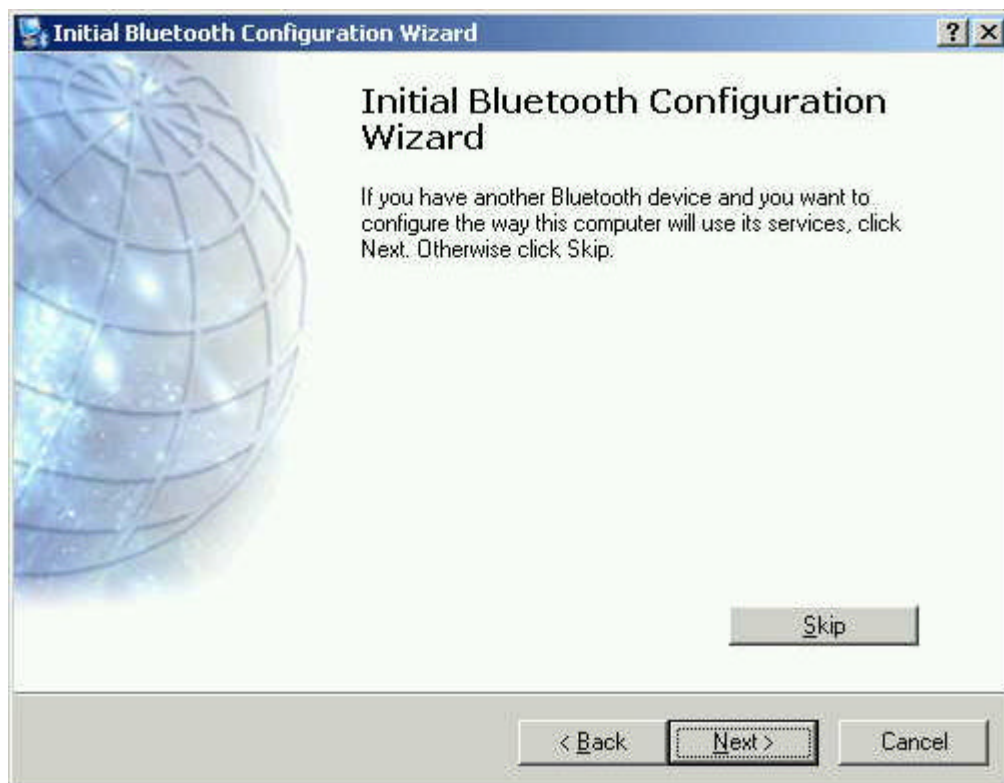
(03.jpg)

6. Choose the services that your computer will offer. Uncheck the items you don't want to offer. Click "Next".



(05.jpg)

7. Click "Skip" to skip adding other Bluetooth devices on this step.



(06.jpg)

8. Now, your Adapter is enabled and ready to use. Click “Finish” to complete the setup process.

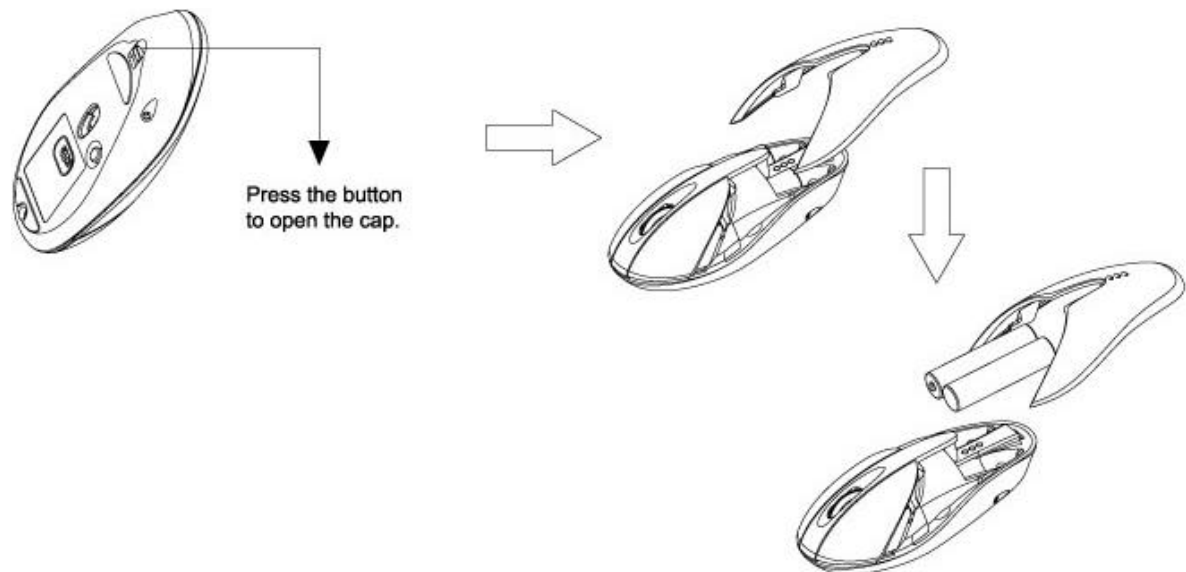


(07.jpg)

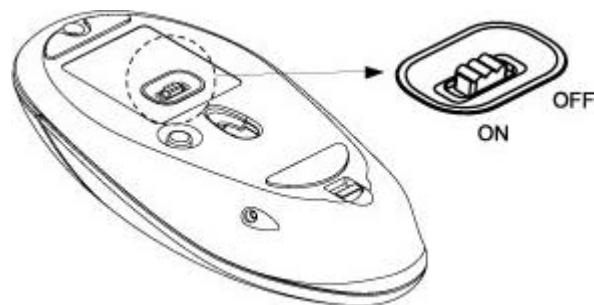
CONGRATULATIONS! Now your computer is Bluetooth Enabled.

Install batteries for Mouse

1. Remove the cap by pressing inward the tenon of battery cap gently.
2. Insert 2 rechargeable 1.2-V AAA Ni-Mh batteries in proper polarity.

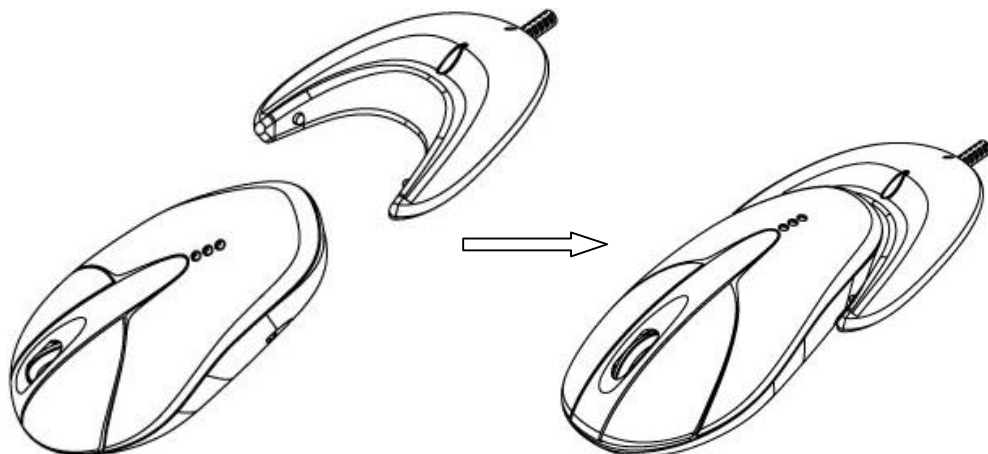


3. To save battery power, always switch off the mouse while traveling or when you're not using it. The power saving switch locates on the mouse bottom.



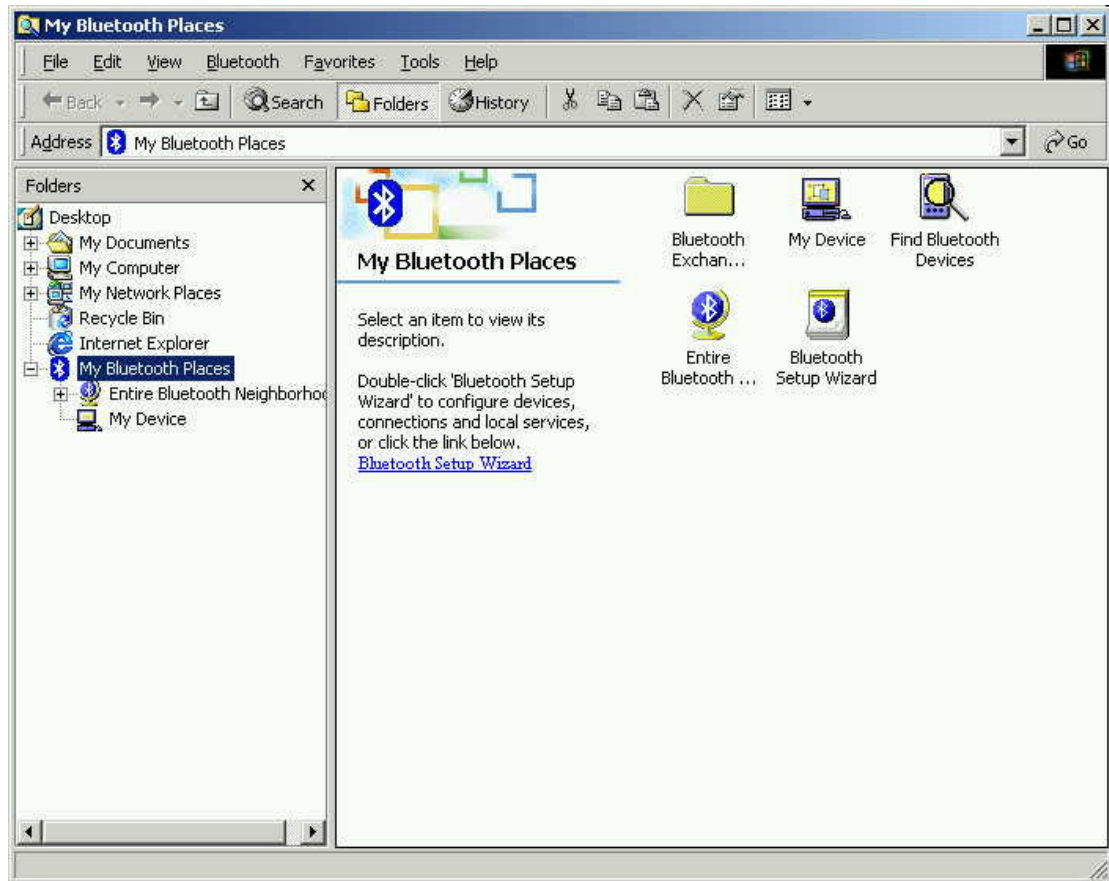
Charging the batteries:

The charger enables charging with USB plug. To recharge the batteries, simply lay Bluetooth mouse and the charging cradle on the table, lock them together until you hear a click and see the light-up of red LED indicator.



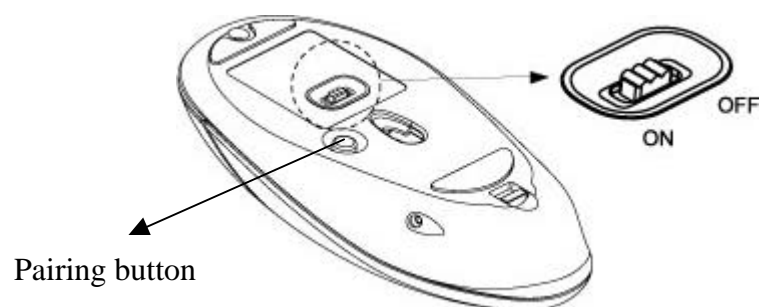
Pairing the mouse

1. Launch to “My Bluetooth Places” by double clicking the short cut on the desk or the Bluetooth icon on the task bar.

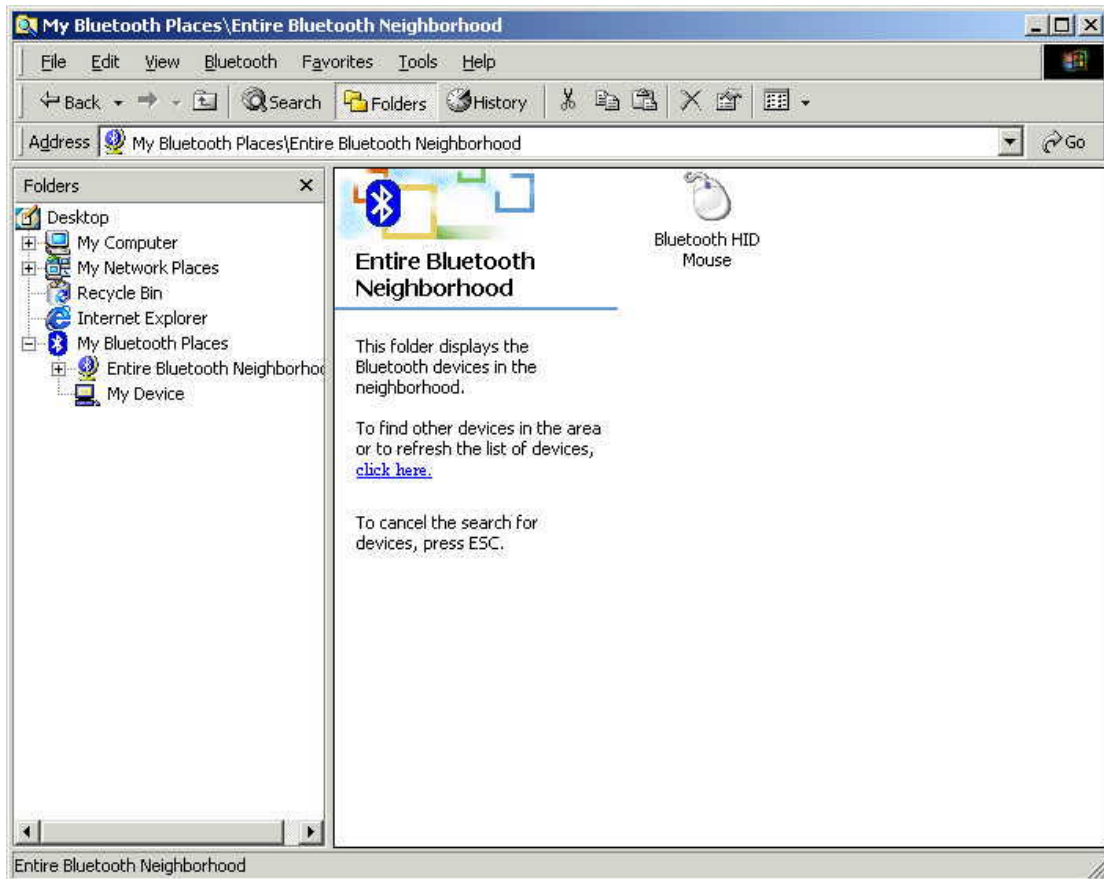


(08.jpg)

2. " Press the “Pairing Button” on the bottom of the mouse.

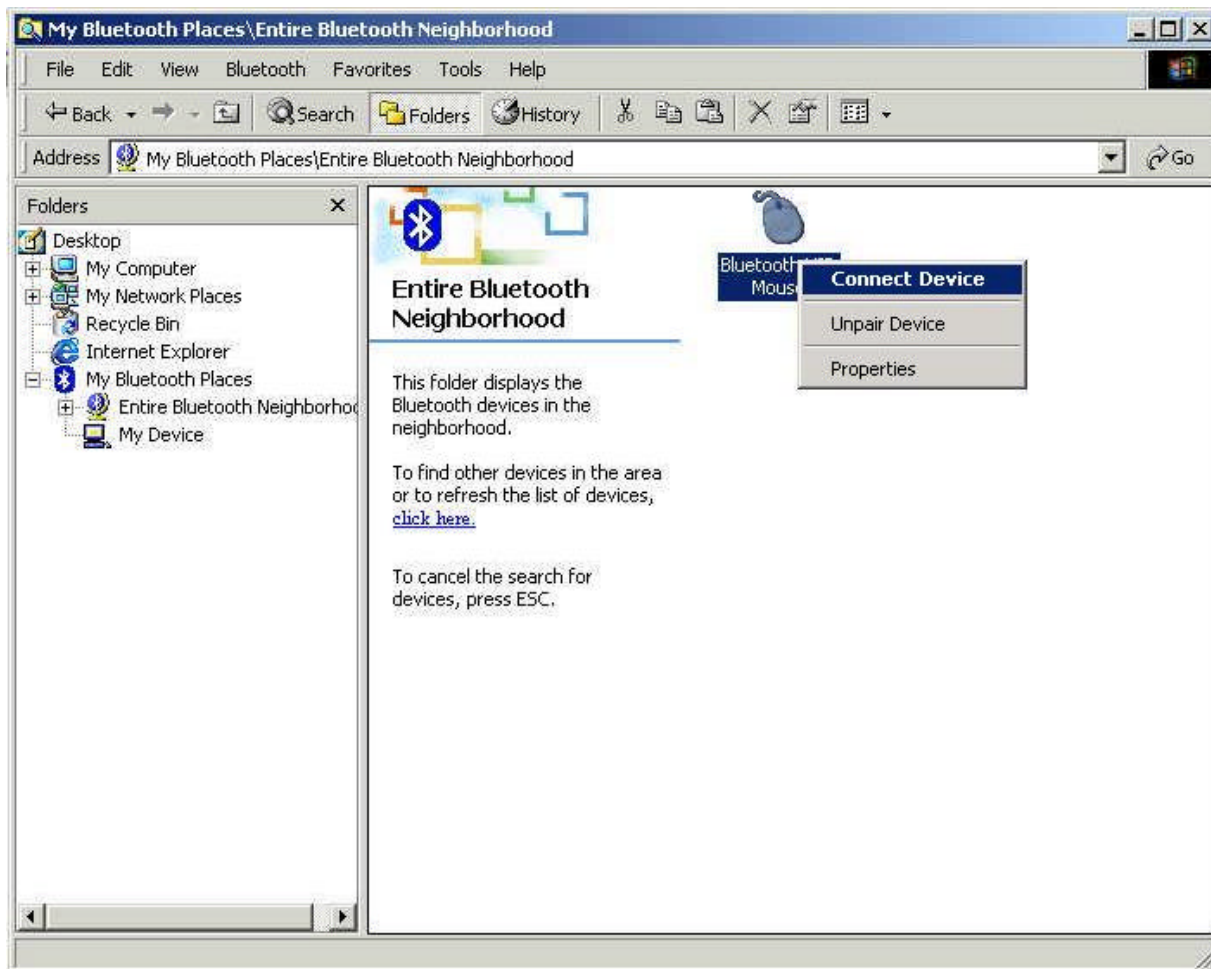


3. Run "Find Bluetooth Devices". System will search for all available Bluetooth devices within working range. When system finds the mouse, it will show a "Bluetooth HID Mouse" icon in "Entire Bluetooth Neighborhood". If you can't find the mouse icon, make sure that the batteries are fully charged and the mouse is within the working range. Then repeat step #2 and #3



(11.jpg)

4. Run “Connect Device” by right clicking the mouse icon, selecting “Connect Device”. (14.jpg)



5. Click “Yes” to connect the mouse.



6. Now the mouse is connected and the icon is changed to



7. You are ready to use the Bluetooth Mouse. You don't have to do Pairing again. Paired Mouse will keep paired unrelated to system rebooting, being off power or removing batteries.

Technical Support

For support of your other Bluetooth devices, contact your device manufacturer. For advance introduction about this product such as:

- More functions of USB Adapter
- What is Bluetooth Technology
- Configurations
- Technical Supports
- Troubleshooting

Check the file “BTW User Guide.pdf” at the root of Installation CD.

Specification

Bluetooth USB Charging Adapter

Standard	Bluetooth 1.1, Class II
Frequency Band	2.40 ~ 2.4835 GHz
Interface	USB 1.1
Sensitivity	-80dBm @0.1%BER
Transmission Power	0dBm
Data Speed	Up to 723 kbps
Operation Temperature	-10~55 degree Celsius
Humidity	10% ~ 90% non-condensing
DC Power	5V (from USB)
Power Consumption	200mA
Operating Range	10 meters (33 feet)

Mouse

Type	Optical
Button Count	3 with scrolling wheel
Tracking Speed	300 mm/s
Resolution	800 dpi
Frequency	2.4GHz
Transmission Power	0dBm
Operation Range	10 meters (33 feet)
Switch Life	1,000,000
Power Consumption	<45 mA @ working mode <0.4 mA @ sleeping mode
Battery type	1.2 V, AAA, Ni-Mh rechargeable
Weight	95 grams without battery
Working Temperature	-10 ~ 55 degree Celsius
Storage Temperature	-10 ~ 65 degree Celsius
Approval	CE, FCC

FCC Safety Statements

This device complies with Part 15 of the FCC rules. Operation is subject to the following two conditions:

1. This device may not cause harmful interference.
2. This device must accept any interference received, including interference that may cause undesired operation.

The radiated output power is far below the FCC Radio frequency exposure limits. Nevertheless, this device should be used in such a manner that the potential for human contact during normal operation is minimized.

Warning: Change or modifications made to this equipment not expressly approved by the manufacturer. May void the FCC authorization to operate this equipment.

Important

This equipment has been tested and found to comply with the limits for a Class B digital device, pursuant to part 15 of the FCC Rules. These limits are designed to provide reasonable protection against harmful interference in a residential installation. This equipment generates uses and can radiate radio frequency energy and, if not installed and used in accordance with the instructions, may cause harmful interference to radio communication. However, there is no guarantee that interference will not occur in a particular installation. If this equipment does cause harmful interference to radio or television reception, which can be determined by turning the equipment off and on, the user is encouraged to try to correct the interference by one or more of the following measures:

- Reorient or relocate the receiving antenna.
- Increase the separation between the equipment and receiver.
- Connect the equipment into an outlet on a circuit different from that to which the receiver is connected.
- Consult the dealer or an experienced radio/TV technician for help.

CE Statements

This device has been tested and found to comply with the requirements set up in the council directive on the approximation of the law of member states relating to EMC Directive 89/336/EEC, Low Voltage Directive 73/23/EEC and R&TTE Directive 99/5/EC.

Regulatory Information

Bluetooth

This equipment is qualified according to Bluetooth Core Specification, version 1.1

Special notices for use in France and Italy:

France

Dispositif a' faible puissance (1mW), pas de limitation pour son usage a' l' interieur ou a' l' exterieur.

Low power device (1mW), no limitation for indoor or outdoor use.

Italy

E' necessaria la concessione ministeriale anche per l' uso Verificare con I rivenditori la procedura da seguire.

License required for use. Check with your reseller for the procedure you need to follow.

Copyright and Trademark Notices.

Products and brand names may be the trademarks or registered trademarks of their respective owners.

Warranty

The manufacturer warrants that the **Bluetooth Mouse, Bluetooth USB Charging Adapter** shall conform to their published specifications, which maybe subject to change, and remain free from defects in materials and workmanship under normal, proper and intended use within warranty period; provide that proof of purchase be furnished with any returned equipment.

During the warranty period, if any component part of the equipment becomes defective by reason of material or workmanship, the manufacturer is immediately notified of such defect. The manufacturer shall supply a replacement part or request return of equipment, freight prepaid, and its designated facility for repair. In the event that no fault is found on a product returned for repair, the manufacturer reserves the right to charge the customer its standard published repair charge.

This warranty shall not apply to any product that has been subject to misuse, bending, neglect, alteration, improper installation, operation outside of the parameters of the published specification, use in any non-approved countries or unauthorized repair performed by anyone other than a the manufacturer designated repair facility. Any non-warranty repairs or maintenance shall be at the manufacturer' s standard rates in effect at the time.

This warranty is in lieu of all other warranties, whether expressed, implied, or statutory, including but not limited to, implied warranties or merchantability and fitness for a particular purpose. In no event shall the manufacturer be liable, whether in contract, in tort, or on any other basis, for any damage sustained by its customers or any other person arising from or related to loss of use, failure or interruption in the operation any products, or delay in maintenance, or for incidental, consequential, indirect, or special damages or liabilities, or for loss of revenue, loss of business or other financial loss arising out of or in connection with the sale, maintenance use, performance, failure, or interruption of these products.