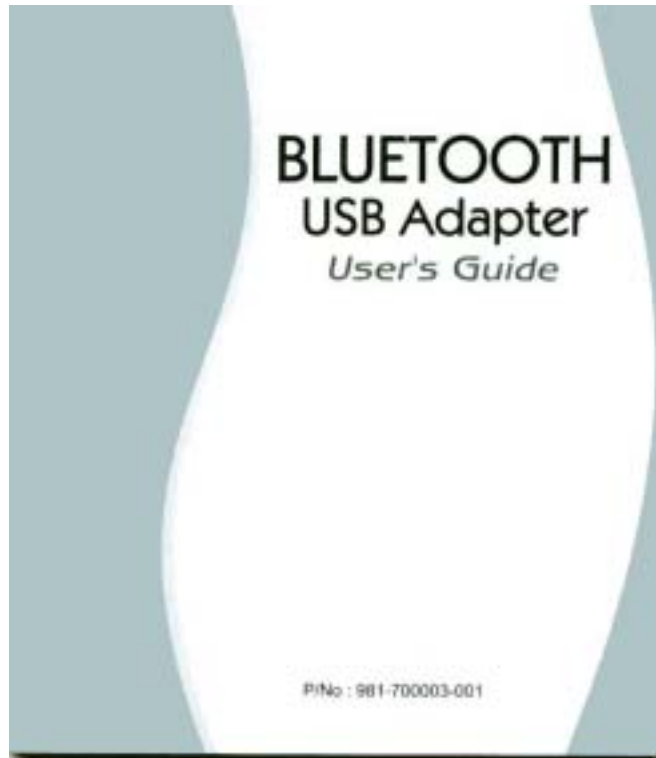


Bluetooth USB Adapter

BTA-3100



Note: Do not plug your Bluetooth USB Adapter into USB port before you start the software installation as following.

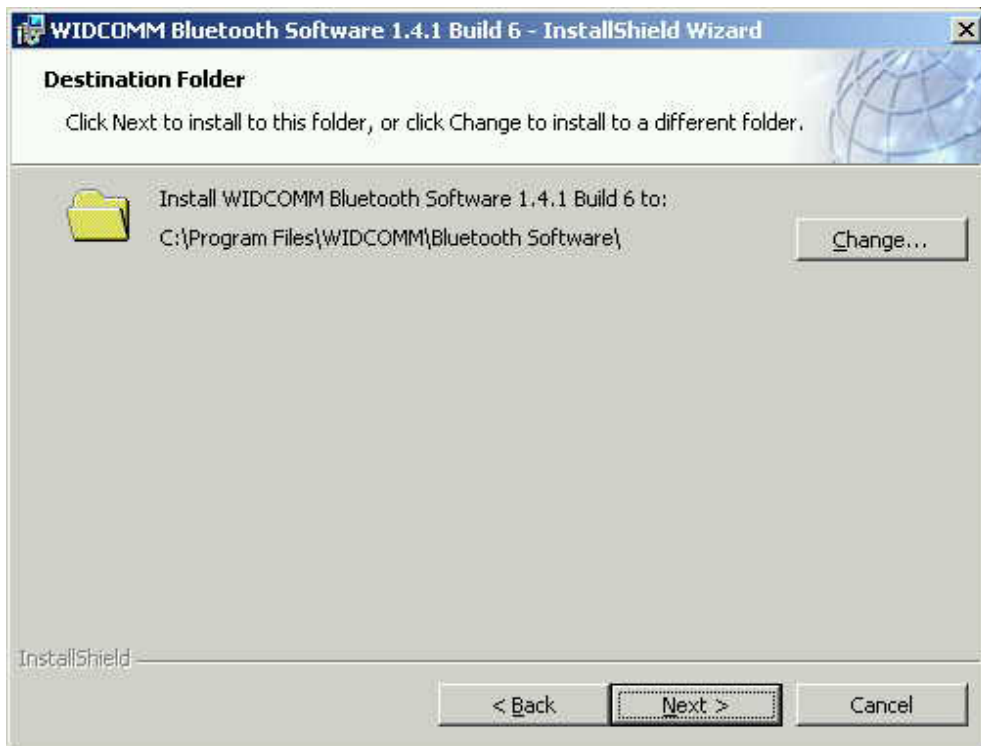
1. With the computer on and Windows 98SE/ME/2000/XP running, insert the Bluetooth Installation CD into CD-ROM drive. The auto-run program will start the installation automatically. If the auto-run doesn't start, please find "setup.exe" at the root of installation CD. Double click it to start the installation. The Bluetooth InstallShield Wizard will appear on your screen. Click "Next" button.



2. The license Agreement will appear. Please read and agree with the agreement by checking "I accept the terms in the license agreement" and click "Next".

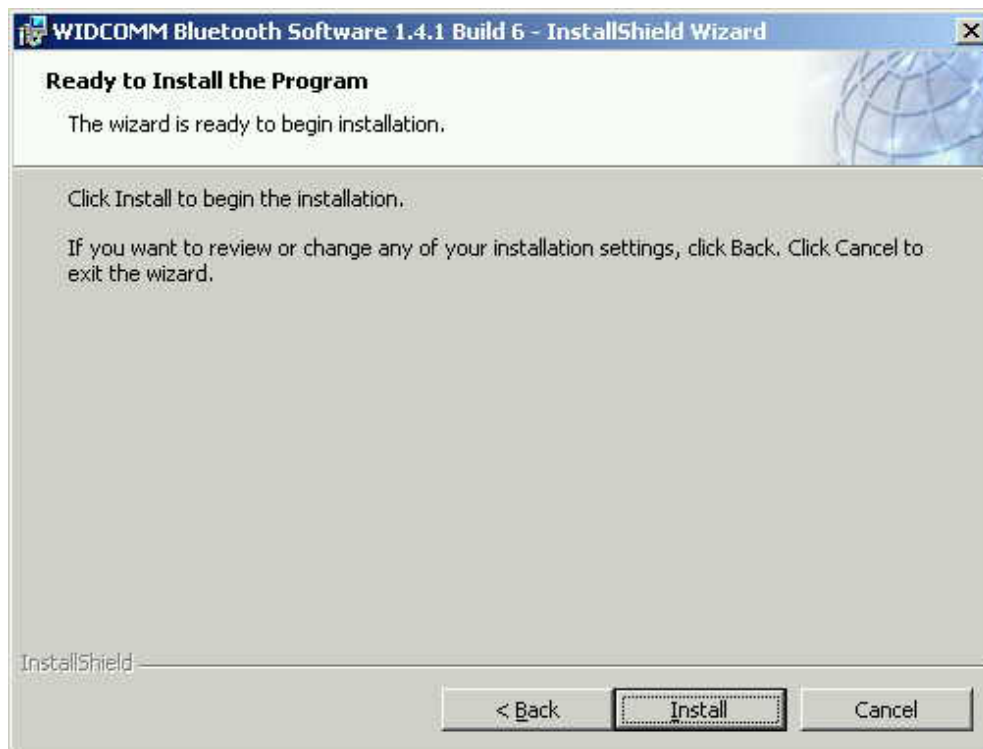


3. Click "Next" to install the default directory, or click "Change" to install in a different

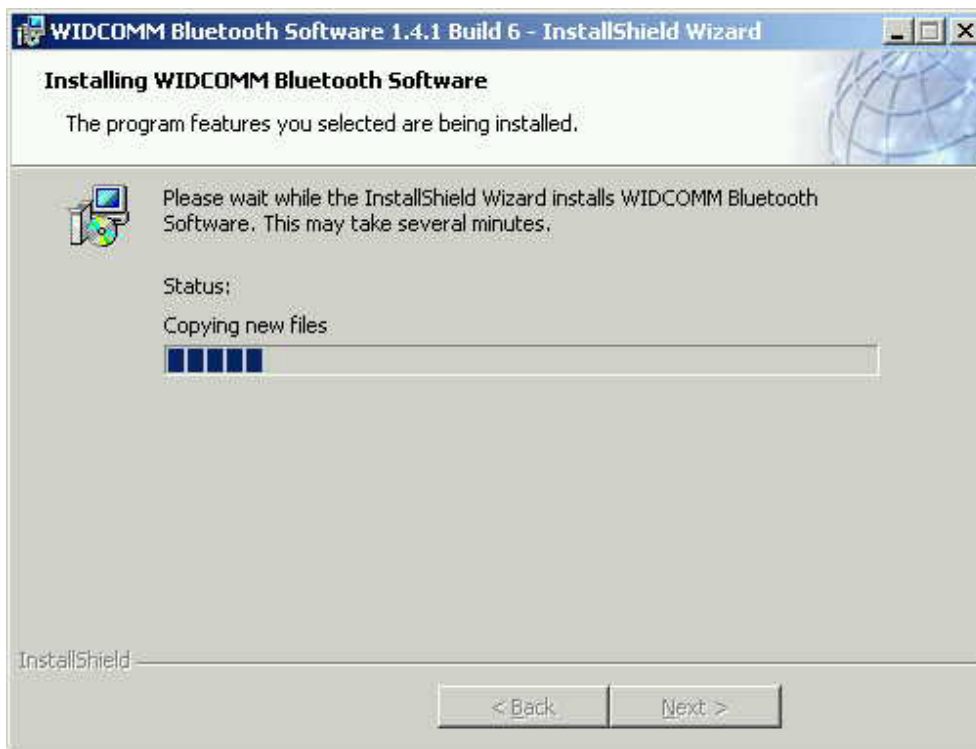


directory.

4. Click "Install" to start the installation.



5. The installation process may take a few minutes.



6. A notice of Driver Signature from Windows system may appear. Please click “OK” to continue the installation.

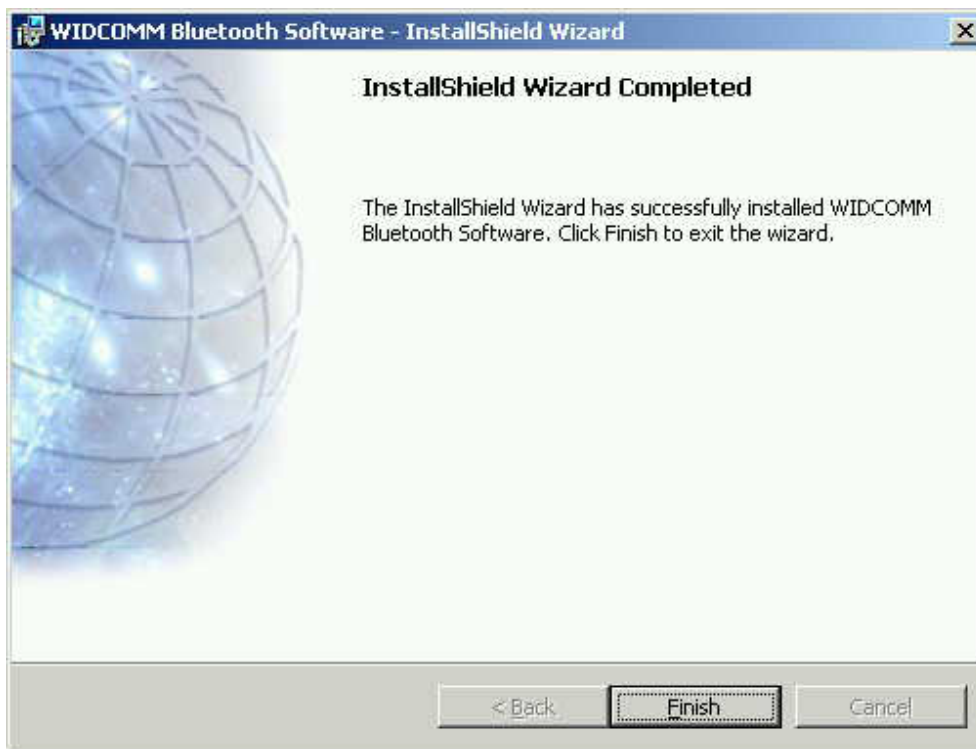


7. Installation program will ask you to plug in Bluetooth Adapter. Please click “Cancel” to



skip it.

8. Once the installation has completed, click “Finish”.



9. You will be asked to restart system. Click “Yes” to restart.



10. Once the computer has restarted, plug the Bluetooth USB Adapter into an available USB port. The system will recognize the Adapter and complete the driver setup automatically.

FCC Safety Statements

This device complies with Part 15 of the FCC rules. Operation is subject to the following two conditions:

- (1) This device may not cause harmful interference.
- (2) This device must accept any interference received, including interference that may cause undesired operation.

The radiated output power is far below the FCC Radio frequency exposure limits. Nevertheless, this device should be used in such a manner that the potential for human contact during normal operation is minimized.

Warning: Changes or modifications made to this equipment not expressly approved by the manufacturer. May void the FCC authorization to operate this equipment.

Important. Please note the following:

This equipment has been tested and found to comply with the limits for a Class B digital device, pursuant to part 15 of the FCC Rules. These limits are designed to provide reasonable protection against harmful interference in a residential installation. This equipment generates, uses and can radiate radio frequency energy and, if not installed and used in accordance with the instructions, may cause harmful interference to radio communications.

However, there is no guarantee that interference will not occur in a particular installation. If this equipment does cause harmful interference to radio or television reception, which can be determined by turning the equipment off and on, the user is encouraged to try to correct the interference by one or more of the following measures:

- Reorient or relocate the receiving antenna.
- Increase the separation between the equipment and receiver.
- Connect the equipment into an outlet on a circuit different from that to which the receiver is connected.
- Consult the dealer or an experienced radio/TV technician for help.

CE Statements

This device has been tested and found to comply with the requirements set up in the council directive on the approximation of the law of member states relating to EMC Directive 89/336/EEC, Low Voltage Directive 73/23/EEC and R&TTE Directive 99/5/EC.

Selling country

Austria, Belgium, Denmark, France, Finland, Germany, Greece, Iceland, Ireland, Italy, Luxembourg, Netherlands, Norway, Portugal, U.K., Spain, Sweden.