

Installing the Clear Repeater – IT-105

Overview

Clear Repeaters, CenTrak Part number IT-105, extend the Clear Network throughout a campus. The Clear Repeater will retransmit any valid CenTrak transmission. Installation of Clear Repeaters must be within the Clear Network as to not leave holes or gaps in coverage and is exclusive to the CenTrak Clear Network System.

Locations for Clear Repeaters are determined during the initial survey of a building. Locations for Clear Repeaters are included on the CenTrak-supplied design documents. In most cases, Clear Repeaters are installed in corridors or closets that do not contain machinery or high voltage transformers.

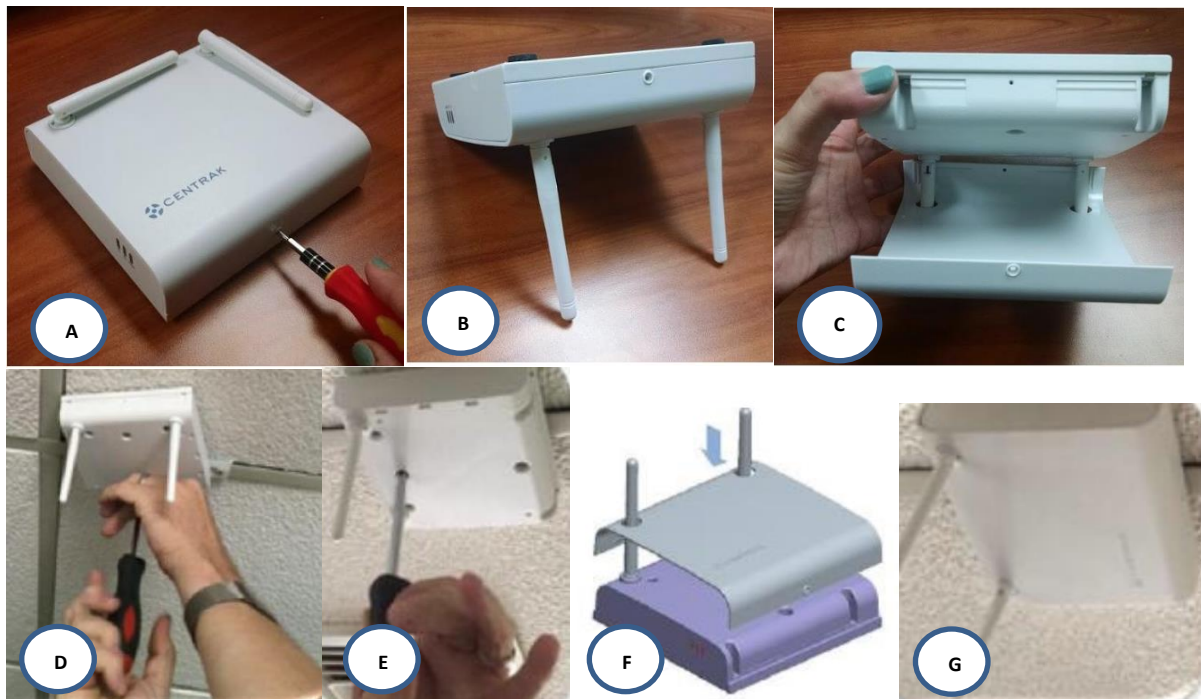
CAUTION!

Do not perform any wiring or connection work while the circuit is live.

The Clear Repeater must be installed such that the minimum distance between any portion of the antenna and nearby persons is 20cm.

Installing the Clear Repeater Below the Grid

Follow this procedure to install a Clear Repeater below the grid.



1. Attach a Star Ceiling mounting attachment to the drop-ceiling track at the designated location. For information on how to attach a Star Ceiling mounting attachment, see [Installing the Star Ceiling Attachment](#).

2. Connect the Clear Repeater to the included Transformer power supply. Do not plug in the transformer to a power source.
3. Remove the cover of the Clear Repeater.
4. Remove the cover of the Clear Repeater by following Steps A through C.
5. Lift the Clear Repeater up to the Star Ceiling Attachment and align the slots, as seen in D and E.
6. Place the cover on the Clear Repeater as seen in figure F, and reinstall the Screw.
7. Unfold the antennas on the Clear Repeater to a 90° angle, as shown in Figure G.
8. Plug in the Transformer to complete the installation.

Installing the Clear Repeater Above the Grid

Follow this procedure to install a Clear Repeater above the grid. Refer to the following graphic for an illustration of relevant features.



- 1 Attach the T-Bar bracket to the Clear Repeater as shown in the preceding illustration.
- 2 Lift a ceiling tile to expose the ceiling grid.
- 3 Attach the Clear Repeater to the included Transformer power supply.
- 4 Slide the clip of the T-Bar bracket over the T-Bar.
- 5 Unfold the antennas on the Clear Repeater to a 45° angle.
- 6 Replace the ceiling tile.

Installing the Star Ceiling Attachment

Follow this procedure to install the Star Ceiling Attachment on the drop-ceiling grid. CenTrak supplies four different Star Ceiling Attachments. Use the following table to select the appropriate Star Ceiling Attachment. The Star Ceiling Attachments are listed in order of grid width.

Part Number	Ceiling Grid Width	Panel Type
ITA-633	5/16 Inch	Recessed
ITA-361	9/16 Inch	Recessed
ITA-353	15/16 Inch	Flush
ITA-362	15/16 Inch	Recessed

1. Separate the two parts of the Star Ceiling Attachment.
2. Lift up the ceiling panel and insert one half of the plastic Star Ceiling Attachment on the ceiling track.
3. Lift up the ceiling panel on the other side of the Grid and insert the other half of the Plastic Star Ceiling Attachment on the ceiling track.
4. Snap the two halves on the plastic Star Ceiling Attachment together. This requires lifting the ceiling panels up slightly to slide the halves of the Star Ceiling Attachment into place.