

Central Hydraulics®

2 TON ALUMINUM LOW PROFILE RACING JACK

ASSEMBLY AND OPERATING INSTRUCTIONS

Model 92782



Distributed exclusively by Harbor Freight Tools®.

3491 Mission Oaks Blvd., Camarillo, CA 93011

Visit our website at: <http://www.harborfreight.com>



**Read this material before using this product.
Failure to do so can result in serious injury.
SAVE THIS MANUAL.**

Copyright® 2005 by Harbor Freight Tools®. All rights reserved. No portion of this manual or any artwork contained herein may be reproduced in any shape or form without the express written consent of Harbor Freight Tools. Diagrams within this manual may not be drawn proportionally. Due to continuing improvements, actual product may differ slightly from the product described herein. Tools required for assembly and service may not be included.

For technical questions or replacement parts, please call 1-800-444-3353.

Specifications

Lift Capacity	4000 Lbs.
Lifting Range	3-1/4" to 18-1/4"
Overall Dimensions	27-1/2" x 12" x 9-1/12"H
Saddle Pad Dimensions	3-5/8"L x 3-5/8"W x 1/4"T
Weight	45.40 Lbs.

Save This Manual

You will need the manual for the safety warnings and precautions, assembly instructions, operating and maintenance procedures, parts list and diagram. Keep your invoice with this manual. Write the invoice number on the inside of the front cover. Keep the manual and invoice in a safe and dry place for future reference.

Safety Warnings and Precautions

WARNING: When using tool, basic safety precautions should always be followed to reduce the risk of personal injury and damage to equipment.

Read all instructions before using this tool!

1. **Keep work area clean.** Cluttered areas invite injuries.
2. **Observe work area conditions.** Do not use machines or tools in damp or wet locations. Don't expose to rain. Keep work area well lit.
3. **Keep children away.** Children must never be allowed in the work area. Do not let them handle machines, or tools.
4. **Store idle equipment.** When not in use, tools must be stored in a dry location to inhibit rust. Always lock up tools and keep out of reach of children.
5. **Use the right tool for the job.** Do not attempt to force a small tool or attachment to do the work of a larger industrial tool. There are certain applications for which this tool was designed. It will do the job better and more safely at the rate for which it was intended. Do not modify this tool and do not use this tool for a purpose for which it was not intended.
6. **Dress properly.** Do not wear loose clothing or jewelry as they can be caught in moving parts. Protective, electrically nonconductive clothes and nonskid footwear are recommended when working. Wear restrictive hair covering to contain long hair.
7. **Use eye protection.** Always wear ANSI approved impact safety goggles.
8. **Do not overreach.** Keep proper footing and balance at all times. Do not reach over or across a Jack or Jack Stand under a load.
9. **Maintain tools with care.** Keep tools clean for better and safer performance. Follow instructions for lubricating and changing accessories. The handle must be kept clean, dry, and free from oil and grease at all times.

10. **Stay alert.** Watch what you are doing, use common sense. Do not operate any tool when you are tired.
11. **Check for damaged parts.** Before using any tool, any part that appears damaged should be carefully checked to determine that it will operate properly and perform its intended function. Check for alignment and binding of moving parts; any broken parts or mounting fixtures; and any other condition that may affect proper operation. Any part that is damaged should be properly repaired or replaced by a qualified technician. Do not use the tool if any switch does not turn On and Off properly.
12. **Replacement parts and accessories.** When servicing, use only identical replacement parts. Use of any other parts will void the warranty. Only use accessories intended for use with this tool. Approved accessories are available from Harbor Freight Tools.
13. **Do not operate tool if under the influence of alcohol or drugs.** Read warning labels if taking prescription medicine to determine if your judgment or reflexes are impaired while taking drugs. If there is any doubt, do not operate the tool.
14. **Maintenance.** For your safety, service and maintenance should be performed regularly by a qualified technician.

Warning: The warnings, cautions, and instructions discussed in this instruction manual cannot cover all possible conditions and situations that may occur. It must be understood by the operator that common sense and caution are factors which cannot be built into this product, but must be supplied by the operator.

Specific Jack Safety Instructions

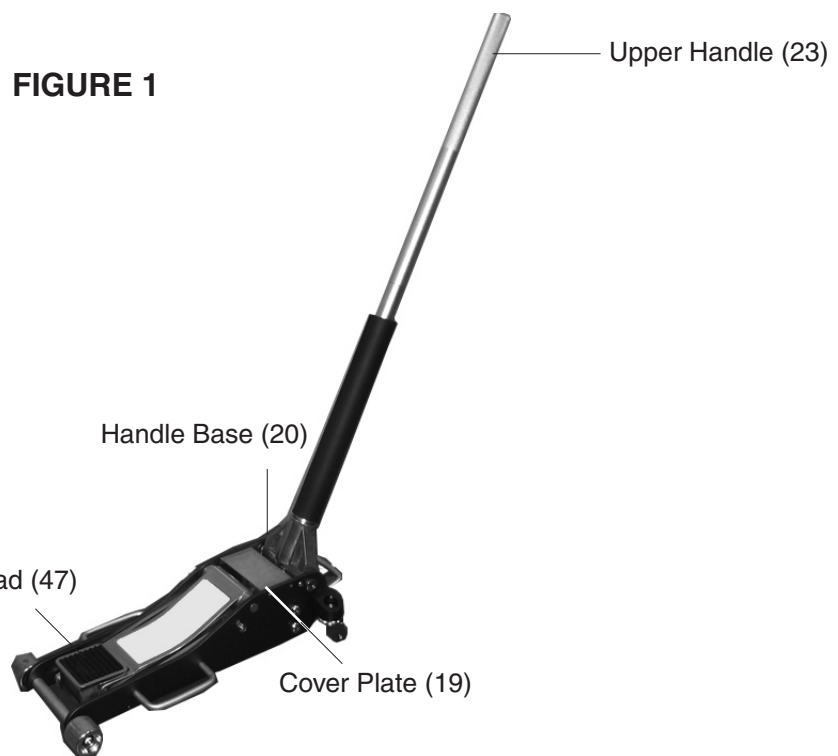
Warning!! Stand clear of the Jack when raising or lowering a vehicle.

1. **Jack Capacity.** Never exceed the Jack's capacity of 4,000 Lbs. (2 Tons). Check the vehicle's owner's manual to determine the actual gross weight of your vehicle before attempting to lift it.
2. **Never ride on the Jack.** Never ride on the Jack, and never have people or pets in the vehicle you are raising.
3. **Only use Jack to raise/lower vehicle.** After raising the vehicle, use jack stands to keep the vehicle suspended for any period of time. Do not work on, around, or under the vehicle while it is supported by the Jack.
4. **Place Jack on correct surface.** Only use this Jack on a stable, level, clean and dry surface that is capable of sustaining the load.
5. **Stabilize the load.** Ensure that the load remains stable at all times. Do not move the load while it is on the Jack.
6. **Vehicle lifting.** When lifting a vehicle, apply the emergency brake and block all of the wheels that will remain on the ground.
7. **Center load.** Center the load on the Jack Saddle (47). Off-center loads can damage seals, causing Jack failure.

8. **Lift only using correct vehicle lift points.** Read the vehicle manual to find the proper lifting points for the vehicle.
9. **Never use the Jack unless it is filled with hydraulic fluid.** Filling with hydraulic fluid is covered in the maintenance section of this manual.
10. **NEVER USE THIS JACK FOR AIRCRAFT PURPOSES.**

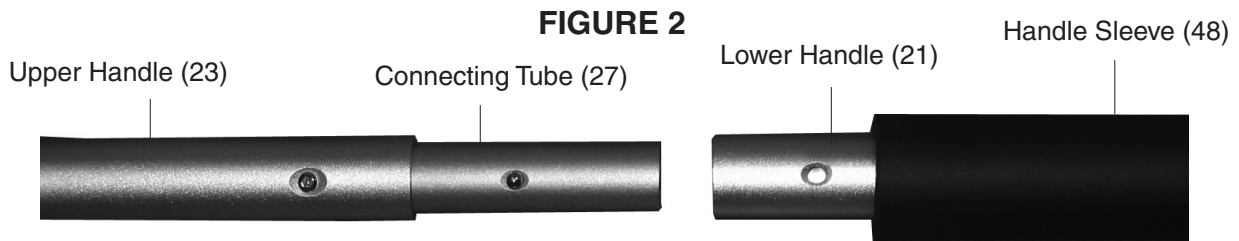
Unpacking

When unpacking, check to make sure the parts listed on pages 8 and 10 are included. If any parts are missing or broken, please call Harbor Freight Tools at the number on the cover of this manual as soon as possible.



Handle Assembly

1. Insert the Connecting Tube (27) into the Upper Handle (23) and secure it with a Hex Bolt (22). This step may already have been done at the factory.
2. Insert the Connecting Tube (27) into the Lower Handle (21) until the button on the Connecting Tube (27) snaps into place. See **FIGURE 2** below.
3. Slide the Handle Sleeve (48) over the Handle Assembly so that it fits on the bottom of the Lower Handle (21). See **FIGURE 2** below.
4. Loosen the knob on the side of the Handle Base (20), insert the Lower Handle (21), and tighten the knob again.



Operation

Raising the Vehicle

1. Test the Jack by placing the Saddle (46) under a stable, dead load. Turn the Handle completely clockwise and pump the Handle up and down.

The Saddle (46) should rise and stay at that level. If it slowly goes down, lower the load, tighten the screw in the center of the Breathing Screw (47a), and try again. If it still goes down, the Power Unit may need to have the air purged from the system. Refer to the Maintenance section.
2. Turn the Handle counterclockwise. The Saddle (46) should lower completely.
3. Position the Jack under the vehicle to be lifted.

Warning! The Jack and vehicle being lifted must be stable so when lifted so they do not fall and cause personal injury. Keep spectators away from the work area. Read the vehicle manual to find the proper lifting points for the vehicle.
4. Turn the Handle clockwise to close the release valve.
5. Pump the Handle up and down until the Saddle (46) just touches the item being lifted. Readjust the Saddle position so that the vehicle lift point is centered on the Saddle (46).
6. Continue pumping until the Jack is fully extended, or the vehicle is lifted to the desired height.
7. **Place jack stands (not included) under the vehicle before attempting to do any work on, in, under, or around the vehicle.**

Operation (continued)

Lowering the Vehicle

1. First, clear any tools or equipment from under the vehicle. Make sure there are no obstructions and that people are at a safe distance from the vehicle.
2. Position the Jack so that the Saddle (46) is at one of the recommended lifting points. Pump the Handle until it fully engages the lifting point, then continue to pump the Jack to the needed height above and clear of the jack stands.
3. Carefully remove the jack stands.

Note: Position yourself safely so that your body is not under any part of the vehicle before lowering the Jack or removing the jack stands.

4. Slowly turn the Handle counterclockwise. The Saddle (46) should lower completely.
5. Pull the Jack clear of the vehicle and store in a safe place.

General Maintenance

1. Keep the Jack clean and dry.
2. Periodically lubricate the bearing and axles on the caster wheels with high quality grease. Use a grease gun (not included) to service the Jack's zerk fittings.
3. Have a qualified service technician periodically dismantle and lubricate the handle assembly and all lift arm linkages.
4. Watch for hydraulic oil leaks. Fill oil if necessary. If leaks persist, contact a qualified service technician.

If the Jack is not performing properly, it may have air in the hydraulic system and need to be bled - see next page.

Maintenance (continued)

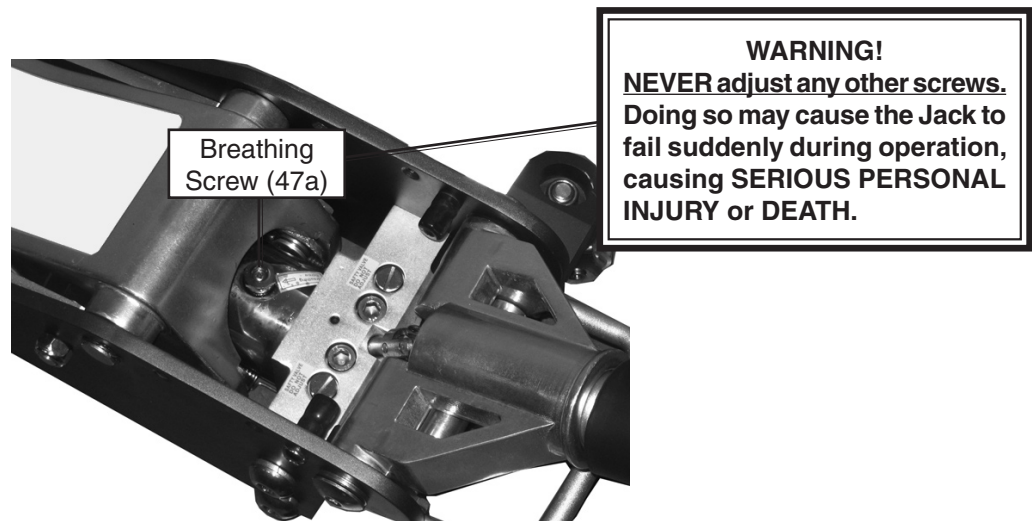
BLEEDING AND FILLING THE JACK WITH HYDRAULIC OIL

See the Power Unit Assembly Drawing on page 11.

Filling

1. Place the Jack on a flat, level, solid surface.
2. Open the Cover Plate (19) by removing the 4 screws with a screwdriver. See **FIGURE 1** on page 4.
3. Using a wrench (not included), remove the Breathing Screw (47a). See **FIGURE 3** below.
4. Using a high quality hydraulic oil, fill to the top of the Cylinder Case (48a).
5. Replace and tighten the Breathing Screw (47a) and the Cover Plate (19).

FIGURE 3



Bleeding

1. Open access to the Cover Plate (19) as if you were filling oil (explained above), and loosen the screw in the middle of the Breathing Screw (47a) by turning it five or six turns.
2. Turn the Handle counterclockwise to open the release valve. Apply pressure on the Saddle (46), holding it down. Pump the Handle up and down at least ten times. This will bring all the air out of the system. Continue pumping until no more air bubbles appear. Turn the Handle counterclockwise to close the release valve.
3. Tighten the screw in the center of the Breathing Screw (47a).
4. Using a wrench or ratchet (neither one included), remove the Breathing Screw (47a) and, if necessary, top off the oil reservoir with a high quality hydraulic oil. Replace the Breathing Screw (47a) and the Cover Plate (19).
5. Test the Floor Jack. Make sure it is functioning properly before attempting to lift another vehicle. Operate the Jack to move the Saddle (46) up and down several times to make sure it is working properly. If not, repeat the above process.

Jack Parts List

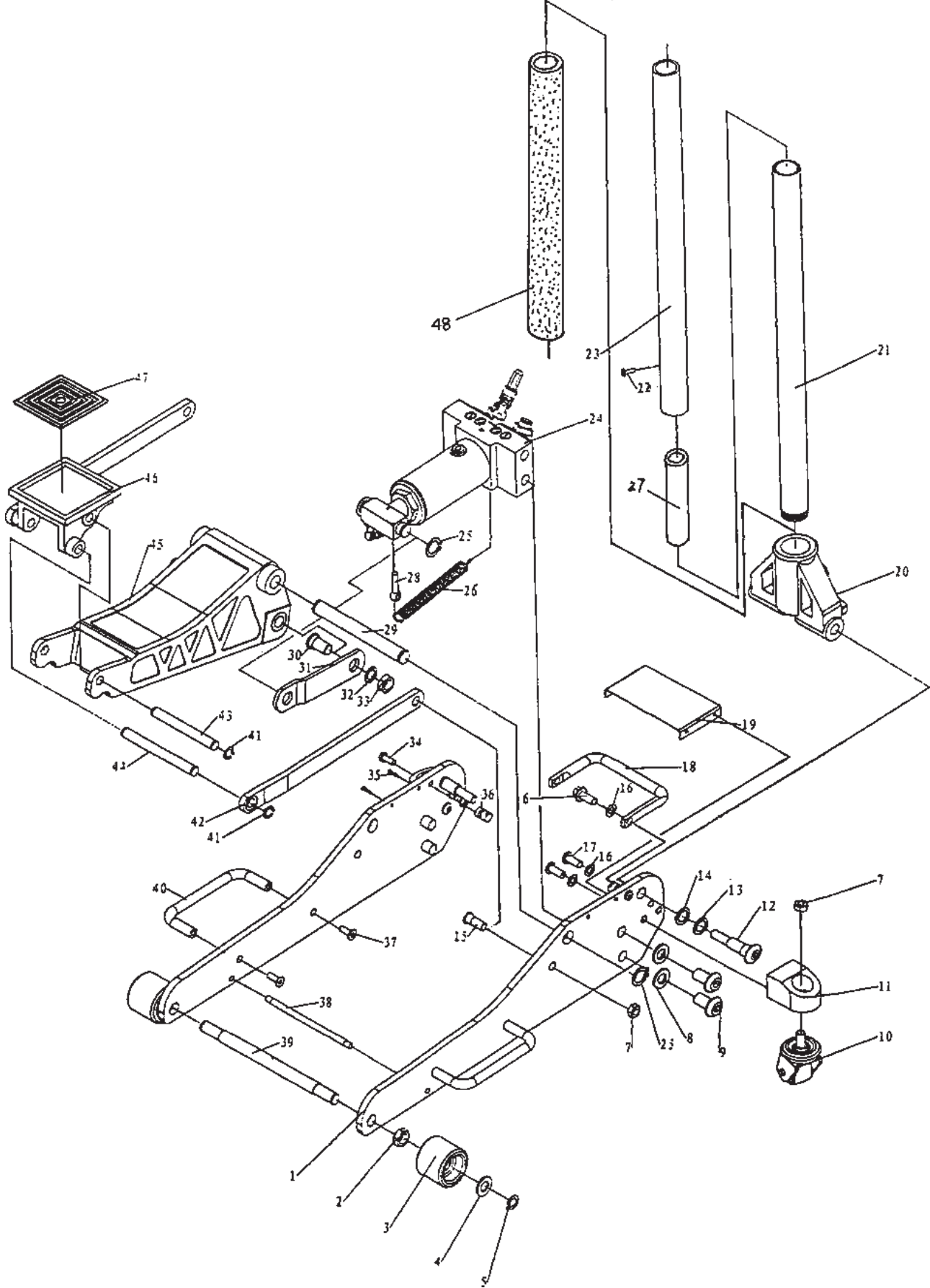
Part #	Description	Qty	Part #	Description	Qty
1	Frame	2	25	C-ring S20	2
2	Nut M18	2	26	Spring	2
3	Front Caster	2	27	Connecting Tube	1
4	Washer 16	2	28	Eye Bolt M8x35	2
5	C-ring S16	2	29	Arm Axis	1
6	Rod	6	30	Pull Rod Axis	2
7	Nut M12	4	31	Pull Rod	2
8	Spring Washer 16	2	32	Spring Washer 16	2
9	Screw M16x30	2	33	Nut M16x1.5	2
10	Rear Wheel Set	2	34	Screw M8x20	2
11	Rear Wheel Saddle	2	35	Tapping Screw ST4.8x16	4
12	Handle Screw	2	36	Case	2
13	Inner Lock Washer 18	2	37	Inner Angle Screw M8x25	4
14	Linkage Washer 18	2	38	Limit Position Axis	1
15	Link Rod Axis	2	39	Axis	1
16	Inner Lock Washer 10	6	40	Handle Bar	2
17	Screw M10x25	4	41	C-ring S14	4
18	Rear Handle Bar	1	42	Link Rod	2
19	Cover Plate	1	43	Short Saddle Base Axis	1
20	Handle Base	1	44	Long Saddle Base Axis	1
21	Lower Handle	1	45	Lift Arm	1
22	Hex Bolt M6x12	1	46	Saddle	1
23	Upper Handle	1	47	Rubber Saddle Pad	1
24	Power Unit Assembly	1	48	Handle Sleeve	1

PLEASE READ THE FOLLOWING CAREFULLY

THE MANUFACTURER AND/OR DISTRIBUTOR HAS PROVIDED THE PARTS DIAGRAM IN THIS MANUAL AS A REFERENCE TOOL ONLY. NEITHER THE MANUFACTURER NOR DISTRIBUTOR MAKES ANY REPRESENTATION OR WARRANTY OF ANY KIND TO THE BUYER THAT HE OR SHE IS QUALIFIED TO MAKE ANY REPAIRS TO THE PRODUCT OR THAT HE OR SHE IS QUALIFIED TO REPLACE ANY PARTS OF THE PRODUCT. IN FACT, THE MANUFACTURER AND/OR DISTRIBUTOR EXPRESSLY STATES THAT ALL REPAIRS AND PARTS REPLACEMENTS SHOULD BE UNDERTAKEN BY CERTIFIED AND LICENSED TECHNICIANS AND NOT BY THE BUYER. THE BUYER ASSUMES ALL RISK AND LIABILITY ARISING OUT OF HIS OR HER REPAIRS TO THE ORIGINAL PRODUCT OR REPLACEMENT PARTS THERETO, OR ARISING OUT OF HIS OR HER INSTALLATION OF REPLACEMENT PARTS THERETO.

NOTE: Some parts are listed and shown for illustration purposes only and are not available individually as replacement parts.

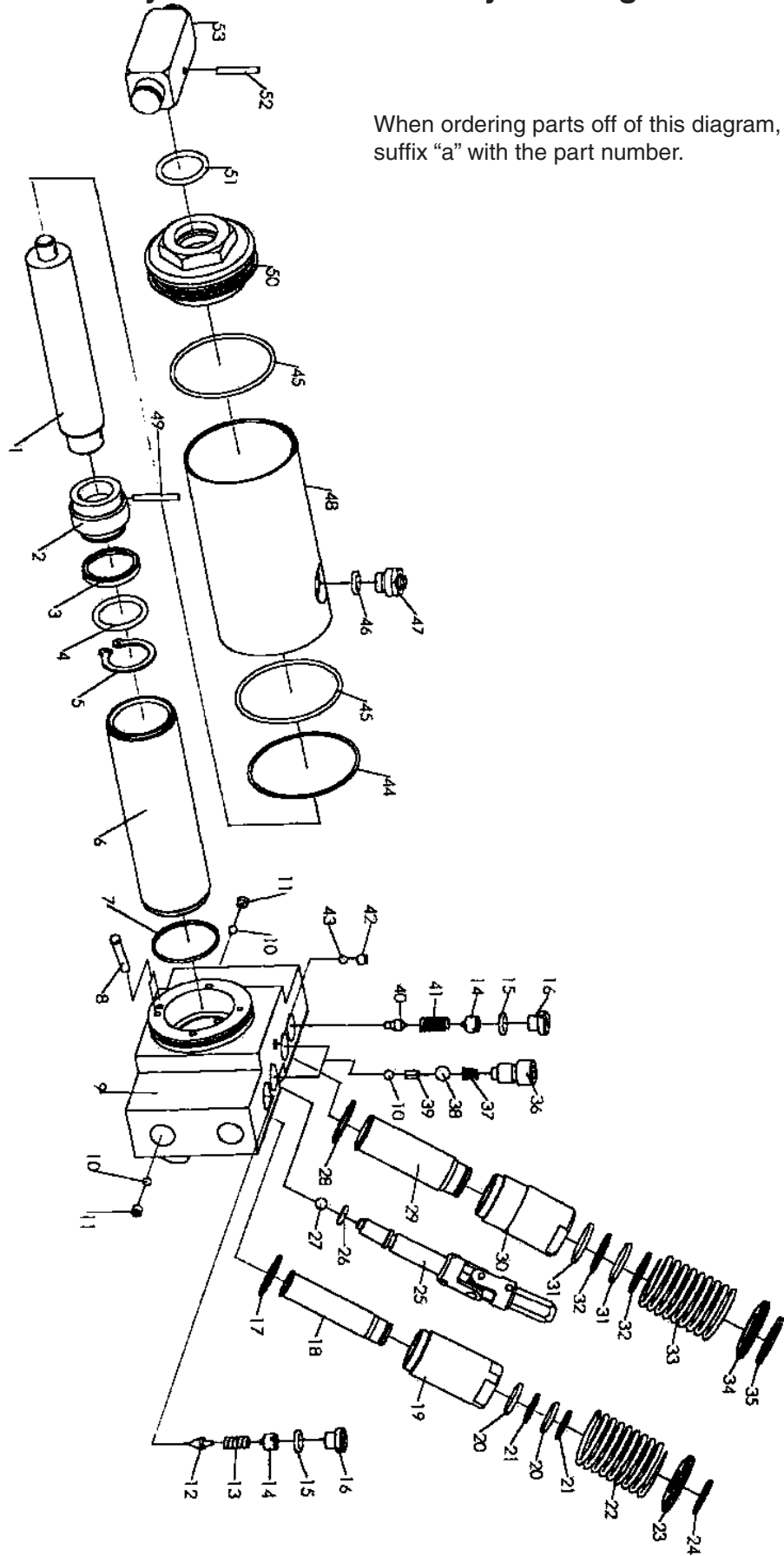
Jack Assembly Drawing



Hydraulic Unit Parts List - List A

Part #	Description	Qty	Part #	Description	Qty
1a	Ram	1	28a	Washer	1
2a	Ram Header	1	29a	Pump Core	1
3a	O-ring	1	30a	Pump Case	1
4a	O-ring 27.7x3.5	1	31a	O-ring	2
5a	C-ring 27	1	32a	Back Seal	2
6a	Cylinder	1	33a	Press Spring	1
7a	O-ring	1	34a	Piston Cover	1
8a	Oul Strainer	2	35a	C-ring 20	1
9a	Base	1	36a	High Pressure Bolt	2
10a	Ball 5.5	4	37a	High Pressure Spring	2
11a	Bolt	2	38a	Bearing 9	2
12a	Saftey Valve	3	39a	Separator	2
13a	Relief Valve Spring	1	40a	Safety Valve	1
14a	Regulating Bolt	2	41a	Relief Valve Spring	1
15a	O-ring 8.5x2.5	2	42a	Bolt	1
16a	Seal Bolt	2	43a	Bearing	1
17a	Washer	1	44a	Seal Washer	1
18a	Pump Core	1	45a	O-ring 61.6x2.65	2
19a	Pump Case	1	46a	O-ring 9.5x2.65	1
20a	O-ring	2	47a	Breathing Screw Assy.	1
21a	Back Seal	2	48a	Cylinder Case	1
22a	Press Spring	1	49a	Pin 4x30	1
23a	Piston Cover	1	50a	Tank Nut	1
24a	C-ring 15	1	51a	O-ring 34x3.5	1
25a	Discharge Valve Rod	1	52a	Pin 4x28	1
26a	O-ring 7.1x2.65	1	53a	Block Linkage	1
27a	Bearing 7	1			

Hydraulic Unit Assembly Drawing



When ordering parts off of this diagram, always use the suffix "a" with the part number.

LIMITED 90 DAY WARRANTY

Harbor Freight Tools Co. makes every effort to assure that its products meet high quality and durability standards, and warrants to the original purchaser that this product is free from defects in materials and workmanship for the period of 90 days from the date of purchase. This warranty does not apply to damage due directly or indirectly, to misuse, abuse, negligence or accidents, repairs or alterations outside our facilities, criminal activity, improper installation, normal wear and tear, or to lack of maintenance. We shall in no event be liable for death, injuries to persons or property, or for incidental, contingent, special or consequential damages arising from the use of our product. Some states do not allow the exclusion or limitation of incidental or consequential damages, so the above limitation of exclusion may not apply to you. THIS WARRANTY IS EXPRESSLY IN LIEU OF ALL OTHER WARRANTIES, EXPRESS OR IMPLIED, INCLUDING THE WARRANTIES OF MERCHANTABILITY AND FITNESS.

To take advantage of this warranty, the product or part must be returned to us with transportation charges prepaid. Proof of purchase date and an explanation of the complaint must accompany the merchandise. If our inspection verifies the defect, we will either repair or replace the product at our election or we may elect to refund the purchase price if we cannot readily and quickly provide you with a replacement. We will return repaired products at our expense, but if we determine there is no defect, or that the defect resulted from causes not within the scope of our warranty, then you must bear the cost of returning the product.

This warranty gives you specific legal rights and you may also have other rights which vary from state to state.

3491 Mission Oaks Blvd. • PO Box 6009 • Camarillo, CA 93011 • (800) 444-3353