

CENTRAL PNEUMATIC®

PREMIUM AIR RIVETER

Model 95173

ASSEMBLY AND OPERATION INSTRUCTIONS



Due to continuing improvements, actual product may differ slightly from the product described herein.



3491 Mission Oaks Blvd., Camarillo, CA 93011

Visit our website at: <http://www.harborfreight.com>

**TO PREVENT SERIOUS INJURY, READ AND UNDERSTAND
ALL WARNINGS AND INSTRUCTIONS BEFORE USE.**

Copyright© 2006 by Harbor Freight Tools®. All rights reserved. No portion of this manual or any artwork contained herein may be reproduced in any shape or form without the express written consent of Harbor Freight Tools.

For technical questions or replacement parts, please call 1-800-444-3353.

MANUAL REVISED 01/07

SPECIFICATIONS

Rivet Capacity (Pin Diameter)	3/32", 1/8", 5/32", 3/16"
Operating Air Pressure	85 to 90 PSI
Air Consumption	4.5 SCFM @ 90 PSI
Air Inlet Size	1/4"-18 NPT
Overall Dimensions	11" High x 10-1/8" Long x 4" Wide
Weight	~3 Pounds


SAVE THIS MANUAL

You will need this manual for the safety warnings and precautions, assembly, operating, inspection, maintenance and cleaning procedures, parts list and assembly diagram. Keep your invoice with this manual. Write the invoice number on the inside of the front cover. Keep this manual and invoice in a safe and dry place for future reference.

UNPACKING

When unpacking, check to make sure that all the parts and accessories **listed on page 10** are included, and the product is intact and undamaged. If any parts are missing or broken, please call Harbor Freight Tools at the number shown on the cover of this manual as soon as possible.

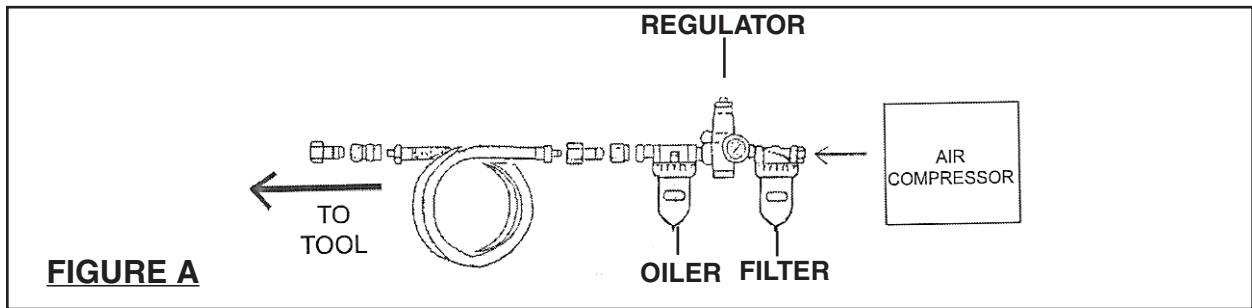
SAFETY WARNINGS AND PRECAUTIONS

1.  **WARNING! Use eye and hearing protection.** Always wear ANSI-approved safety impact goggles and hearing protection when using this Riveter. Other people in the work area must also wear appropriate ANSI-approved safety equipment.
2. **Keep work area clean.** Cluttered areas invite accidents.
3. **WARNING!** Keep all body parts clear of the Rivets while the Riveter is connected to the air hose.
4. **Always wear heavy duty work gloves when operating the Riveter.**
5. **Stay within air pressure capacity.** Never operate the Riveter above 90 PSI.
6. **Observe work area conditions.** Keep work area well lit.
7. **Keep children away.** Children must never be allowed in the work area. Do not let them handle machines, tools, extension cords, or air hoses.
8. **Store idle equipment.** When not in use, tools must be stored in a dry location to inhibit rust. Always lock up tools and keep out of reach of children.

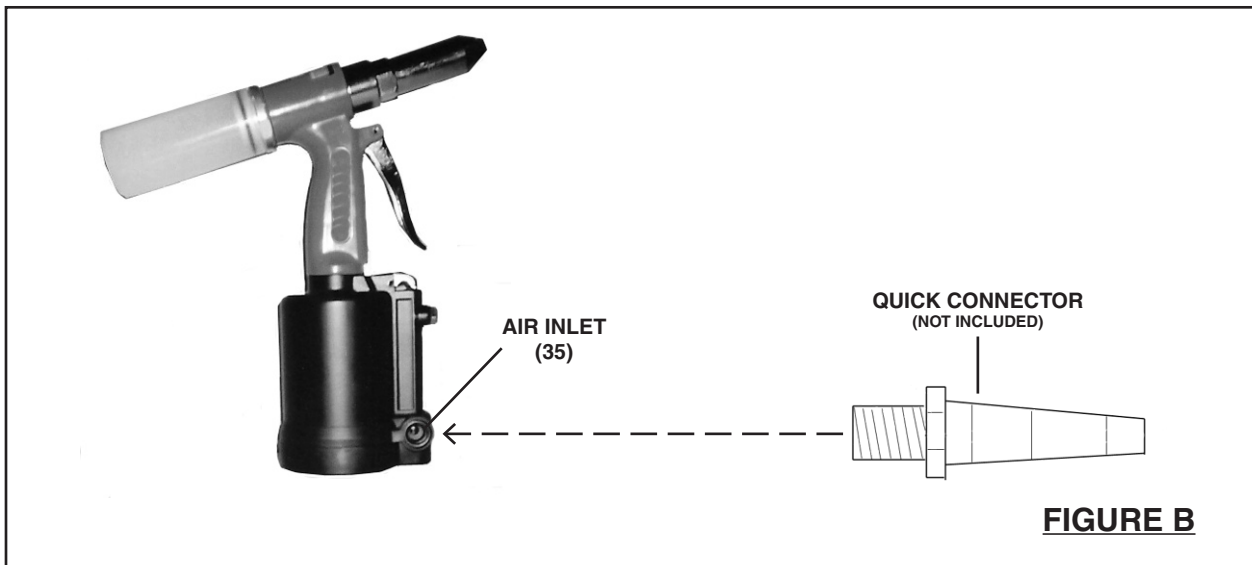
9. **Use the right tool for the job.** Do not attempt to force a small tool or attachment to do the work of a larger industrial tool. There are certain applications for which this tool was designed. It will do the job better and more safely at the rate for which it was intended. Do not modify this tool, and do not use this tool for a purpose for which it was not intended.
10. **Dress properly.** Do not wear loose clothing or jewelry as they can be caught in moving parts. Protective, electrically non-conductive clothes and non-skid footwear are recommended when working. Wear restrictive hair covering to contain long hair.
11. **Do not overreach.** Keep proper footing and balance at all times. Do not reach over or across running tools or air hoses.
12. **Disconnect air hose and release any built-up air pressure.** Never service the Riveter or disassemble with the air hose attached. Always release any built-up air even after disconnecting hose. Disconnect the Riveter when not in use.
13. **Remove adjusting wrenches.** Check that adjusting wrenches are removed from the tool and work surface before attaching to an air source.
14. **Avoid unintentional starting.** Be sure the Trigger (25) is in the **OFF** position when not in use and before plugging in. Do not carry any tool with your finger on the Trigger, whether it is attached to an air source or not. Do not point the tool towards yourself or anyone.
15. **Stay alert.** Watch what you are doing. Use common sense. Do not operate any tool when you are tired.
16. **Check for damaged parts.** Before using any tool, any part that appears damaged should be carefully checked to determine that it will operate properly and perform its intended function. Check for alignment and binding of moving parts, any broken parts, and any other condition that may affect proper operation. Any part that is damaged should be properly repaired or replaced by a qualified technician. Do not use the tool if the Trigger does not operate properly.
17. **Replacement parts and accessories.** This product is to be repaired and serviced only by a qualified technician. When this product is serviced, only identical replacement parts should be used. Use of any other parts will void the warranty. Only use accessories intended for use with this tool. Approved accessories are available from Harbor Freight Tools.
18. **Do not operate tool if under the influence of alcohol or drugs.** Read warning labels if taking prescription medicine to determine if your judgement or reflexes are impaired while taking drugs. If there is any doubt, do not operate the tool.
19. **Maintenance.** The maintenance outlined in the "Maintenance" section of this manual should be performed regularly. For your safety, this product should be serviced or repaired regularly only by a qualified technician.

20. **Compressed air only.** Use clean, dry, regulated, compressed air between 85 PSI and 90 PSI. Never use oxygen, carbon dioxide, combustible gases, or any other bottled gas as a power source for this tool.
21. **Fire the Rivets into an appropriate work surface only.** This Riveter is designed for use on metal objects only, and is not suitable for soft surfaces.
22. **Do not fire the Rivets too close to the edge of a workpiece.** They may split the workpiece and cause it to fly free, causing personal injury.
23. **Transport the Riveter safely.** Always disconnect the air supply when moving the tool in the workplace. Carry the tool by the handle and avoid contact with the Trigger (25).
24. **Always attach the Bottle (15) to the Riveter prior to using the tool.**
25. **Avoid working alone.** If an accident happens, an assistant can bring help.
26. **WARNING!** Some dust created by power sanding, sawing, grinding, drilling, and other construction activities contain chemicals known (to the State of California) to cause cancer, birth defects, or other reproductive harm.
Some examples of these chemicals are:
 - Lead from lead-based paints,
 - Crystalline silica from bricks, cement, and other masonry products,
 - Arsenic and chromium from chemically treated lumber.(California Health & Safety Code § 25249.5, *et seq.*)
27. **WARNING!** The warnings, cautions, and instructions discussed in this instruction manual cannot cover all possible conditions and situations that may occur. It must be understood by the operator that common sense and caution are factors which cannot be built into this product, but must be supplied by the operator.

ASSEMBLY INSTRUCTIONS



1. For best service, you should incorporate an oiler, regulator, and in-line filter, as shown in the diagram above. Hoses, couplers, oilers, regulators, and filters are all available at Harbor Freight Tools. **NOTE:** If an automatic oiler is not used, put 3-5 drops of pneumatic Tool Oil (not included) in the tool's quick connector before each use.



2. Prior to use, the Riveter requires the attachment of a Quick Connector (not included) to its Air Inlet (35). To do so, make sure the screen *Air Filter* is properly seated in the Air Inlet (35). Wrap approximately 3" of pipe thread sealer tape (not included) around the male threads of the Quick Connector. Then, firmly tighten the Quick Connector into the Air Inlet. **(See Figure B.)**

To Install A Nosepiece:

1. The Riveter comes with a set of four Nosepieces (1). The sizes of the Nosepieces are 3/32", 1/8", 5/32", and 3/16" and must be matched with the size of the rivet pin (3/32", 1/8", 5/32", or 3/16") you intend to use. **(See Figure D.)**
2. Use the accessory Spanner when changing Nosepieces (1). Also, use care when unscrewing a Nosepiece as the spring action in the Outer Cylinder (2) will cause the Nosepiece to "pop out". **(See Figure D.)**

Note: Nosepieces are stored underneath the Base Cover (34).

OPERATION

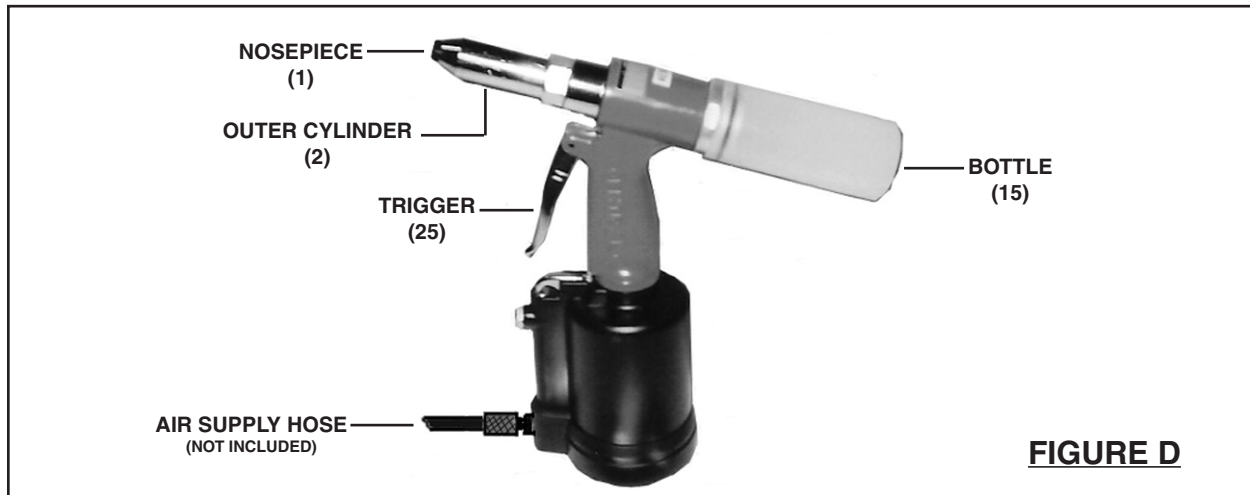


FIGURE D

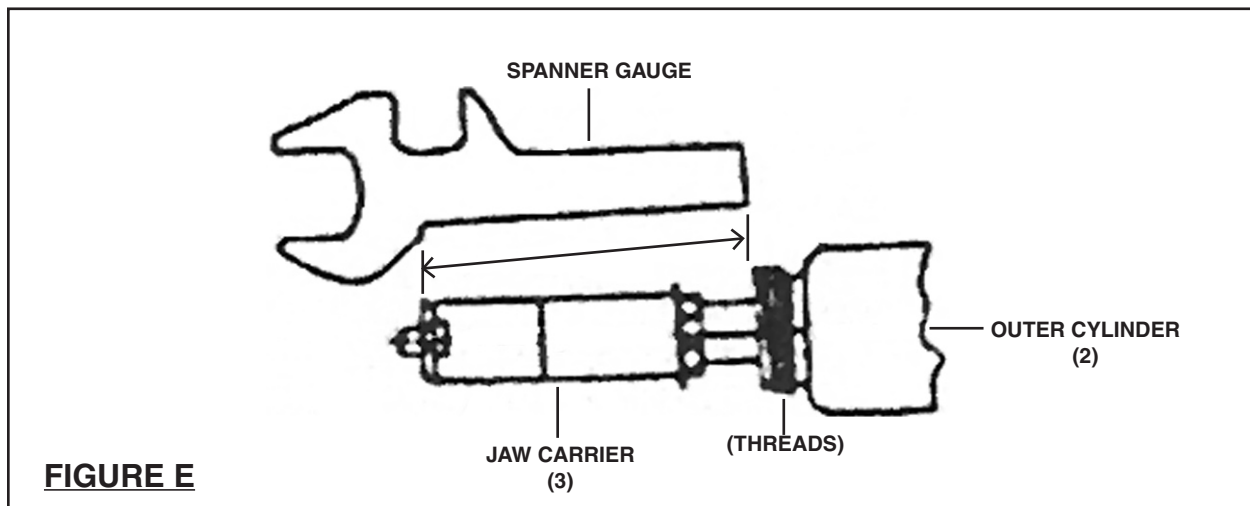
1. Make sure the Bottle (15) is firmly inserted onto the Airproof Lid (16) of the Riveter. **(See Figure D.)**
2. Depending on the size of rivet pin used, attach the corresponding Nosepiece size (3/32", 1/8", 5/32", or 3/16") with the accessory Spanner. **(See Figure D.)**
3. **IMPORTANT:** When drilling rivet holes in a workpiece, make sure to use the same diameter drill bit as the outer diameter of rivet sleeve you will be using.
4. Attach an air hose to the previously installed Quick Connector of the Riveter. **(See Figure D.)**
5. Turn on the air compressor, and set its regulator at 90 PSI. **Do not exceed 90 PSI.**
6. Insert the pin (long, thin end) of a rivet fully into the Nosepiece (1). **CAUTION! Make sure to NEVER to touch the Trigger (25) when you are inserting rivets. (See Figure D.)**
7. Insert the sleeve (short, thick end) of the rivet through the pre-drilled hole in the workpiece.
8. Hold the Riveter firmly with both hands, and squeeze the Trigger (25) to activate the Riveter. Repeat as necessary. Then, release pressure on the Trigger. **(See Figure D.)**
9. When finished using the Riveter, turn off the air compressor. Squeeze the Trigger (25) again to release any compressed air in the Riveter. Then, disconnect the air hose from the tool. **(See Figure D.)**
10. Remove the Bottle (15), and empty the used rivets in a proper trash container. Then, store the Riveter in a clean, dry, safe location out of reach of children and other unauthorized people. **(See Figure D.)**

INSPECTION, MAINTENANCE, AND CLEANING



WARNING! Always wear ANSI-approved safety impact goggles when performing any inspection, maintenance, or cleaning procedures.

1. **WARNING!** Prior to performing any inspection, maintenance, or cleaning of the Riveter, make sure to disconnect the air hose from the tool. Then, squeeze the Trigger (25) again to release any compressed air in the Riveter.
2. **To clean the exterior of the Riveter,** wipe with a clean, damp cloth using a mild detergent or mild solvent. Do not immerse the tool in liquids.
3. **To clean and change the Jaws:**
 - a. Unscrew and remove the Outer Cylinder (2), using the accessory Spanner.
 - b. Use the Spanner to unscrew and remove the Jaw Carrier (3). Use care as there is a Jaw Push Spring (6) behind the Jaw Carrier which may fly out.
 - c. Remove the Jaws (4) from between the Jaw Carrier (3).
 - d. If you are going to clean the Jaws (4), use a steel brush and mild solvent. Then, apply a light coat of machine oil to the Jaws. If you are going to replace the Jaws:
 - e. Insert the new Jaws (4) into the Jaw Carrier (3). **(See Assy. Diagram.)**
 - f. When re-assembling the Jaw Carrier (3), make sure the Jaw Pusher's (5) head lines up with the Jaws. **(See Assy. Diagram.)**



- g. Check the distance from the head of the Jaw Carrier (3) to the mounting threads of the Outer Cylinder (2) using the gauge on the Spanner. With the gauge at a slight incline, the back of the gauge should rest on the beginning of the Frame Head threads, while the front of the gauge should rest on the front edge of the Jaw Carrier (3). If it does not, have a qualified service technician repair the Riveter. **(See Figure E.)**

4. **The Riveter comes from the factory with hydraulic oil included.** Over time, if the performance of the tool deteriorates it may be due to low hydraulic oil. Have a qualified technician replenish the oil in the reservoir by removing the Air Cylinder Lid (24) and piston and refilling the unit up to the top of the Lock Nut (18).
5. **When storing**, always store the Riveter in a clean, dry, safe location out of reach of children and other unauthorized people.
6. **CAUTION!** All maintenance, service, and repairs not mentioned in this manual must only be performed by a qualified service technician.

PLEASE READ THE FOLLOWING CAREFULLY
--

THE MANUFACTURER AND/OR DISTRIBUTOR HAS PROVIDED THE PARTS LIST AND ASSEMBLY DIAGRAM IN THIS MANUAL AS A REFERENCE TOOL ONLY. NEITHER THE MANUFACTURER OR DISTRIBUTOR MAKES ANY REPRESENTATION OR WARRANTY OF ANY KIND TO THE BUYER THAT HE OR SHE IS QUALIFIED TO REPLACE ANY PARTS OF THE PRODUCT. IN FACT, THE MANUFACTURER AND/OR DISTRIBUTOR EXPRESSLY STATES THAT ALL REPAIRS AND PARTS REPLACEMENTS SHOULD BE UNDERTAKEN BY CERTIFIED AND LICENSED TECHNICIANS, AND NOT BY THE BUYER. THE BUYER ASSUMES ALL RISKS AND LIABILITY ARISING OUT OF HIS OR HER REPAIRS TO THE ORIGINAL PRODUCT OR REPLACEMENT PARTS THERETO, OR ARISING OUT OF HIS OR HER INSTALLATION OF REPLACEMENT PARTS THERETO.

TROUBLESHOOTING

Problem	Possible Cause	Possible Solution
Jaws slipping.	Worn or damaged Jaws.	Replace Jaws.
Jaws will not open.	1. Loose Nosepiece. 2. Dirty Jaws.	1. Tighten Nosepiece. 2. Clean Jaws.
Stroke is too short.	1. Low oil. 2. Rivet wrong size.	1. Prime Riveter. 2. Use proper rivet length.
Weak pulling action.	1. Low air pressure. 2. Bad air compressor.	1. Check regulator. 2. Have compressor serviced by a qualified technician.
Leaking air.	1. Poor hose connections. 2. Bad O-Ring. 3. Dirty Air Valve. 4. Dirty air line inlet.	1. Reconnect using pipe thread sealant tape. 2. Replace O-Ring. 3. Clean and lubricate with pneumatic tool oil. 4. Clean and lubricate with pneumatic tool oil.

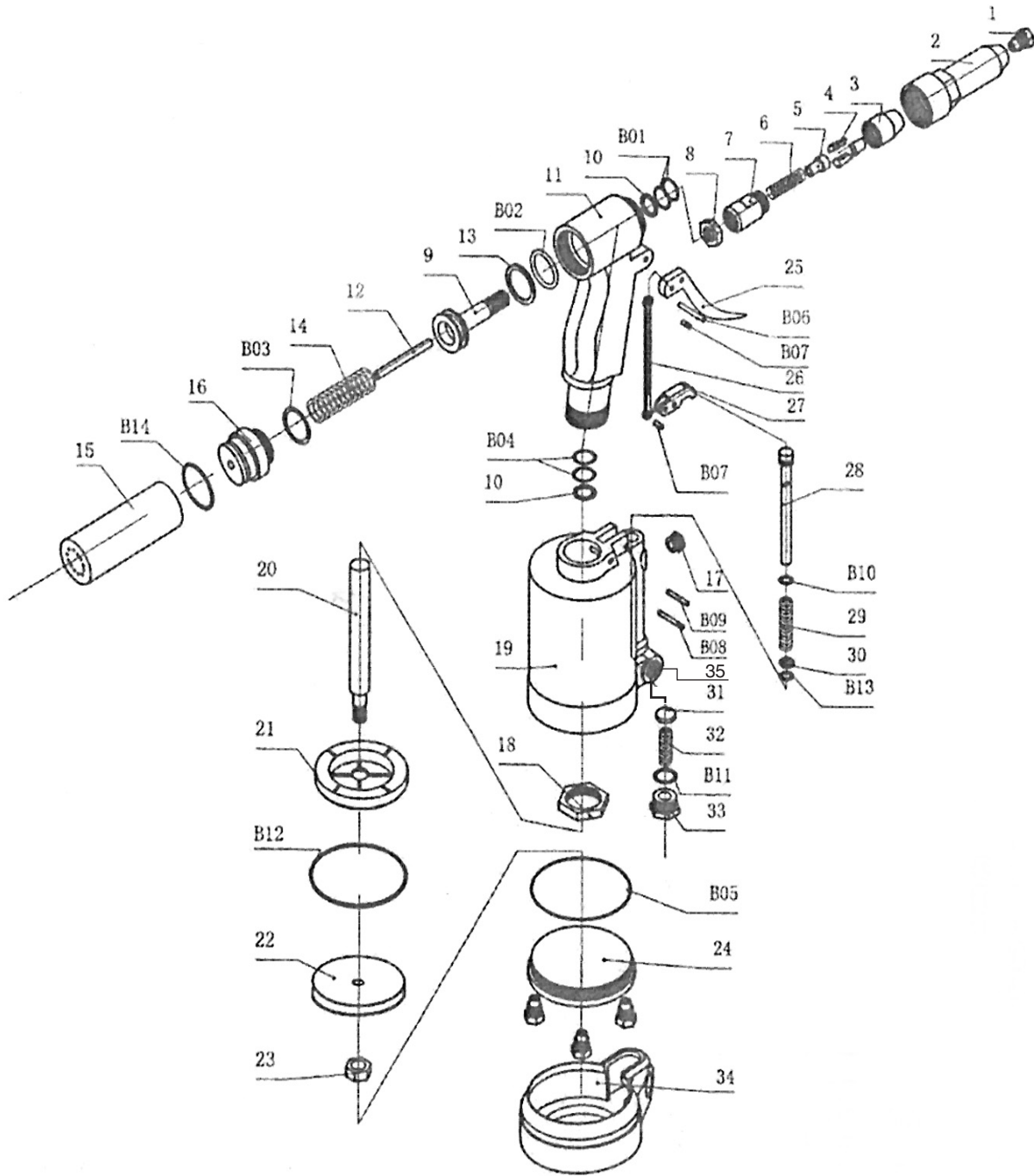
PARTS LIST

Part	Description
1	Nosepiece (Set of 4)
2	Outer Cylinder
3	Jaw Carrier
4	Jaws
5	Jaw Pusher
6	Jaw Push Spring
7	Jaw Cylinder
8	Case Lock Nut
9	Principle Axis
10	Plastic Ring
11	Handle
12	Lead Axis
13	Plastic Ring
14	Restore Spring
15	Bottle
16	Airproof Lid
17	Silencer

Part	Description
18	Lock Nut
19	Air Cylinder
20	Pole Piston
21	Cushion
22	Piston
23	Nut
24	Air Cylinder Lid
25	Trigger
26	Linker
27	Press Plank
28	Air Valve
29	Valve Spring
30	Copper Washer
31	Valve
32	Spring
33	Nut
34	Base Cover

Part	Description
35	Air Inlet
B01	O-Ring
B02	O-Ring
B03	O-Ring
B04	O-Ring
B05	O-Ring
B06	Spring Pin
B07	Spring Pin
B08	Pin
B09	Spring Pin
B10	O-Ring
B11	O-Ring
B12	O-Ring
B13	O-Ring
B14	O-Ring

ASSEMBLY DIAGRAM



NOTE:

Some parts are listed and shown for illustration purposes only, and are not available individually as replacement parts.

WARRANTY

CENTRAL PNEUMATIC®

LIMITED 1 YEAR WARRANTY

Harbor Freight Tools Co. makes every effort to assure that its products meet high quality and durability standards, and warrants to the original purchaser that this product is free from defects in materials and workmanship for the period of one year from the date of purchase. This warranty does not apply to damage due directly or indirectly to misuse, abuse, negligence or accidents; repairs or alterations outside our facilities; or to lack of maintenance. We shall in no event be liable for death, injuries to persons or property, or for incidental, contingent, special or consequential damages arising from the use of our product. Some states do not allow the exclusion or limitation of incidental or consequential damages, so the above limitation of exclusion may not apply to you. THIS WARRANTY IS EXPRESSLY IN LIEU OF ALL OTHER WARRANTIES, EXPRESS OR IMPLIED, INCLUDING THE WARRANTIES OF MERCHANTABILITY AND FITNESS.

To take advantage of this warranty, the product or part must be returned to us with transportation charges prepaid. Proof of purchase date and an explanation of the complaint must accompany the merchandise. If our inspection verifies the defect, we will either repair or replace the product at our election or we may elect to refund the purchase price if we cannot readily and quickly provide you with a replacement. We will return repaired products at our expense, but if we determine there is no defect, or that the defect resulted from causes not within the scope of our warranty, then you must bear the cost of returning the product.

This warranty gives you specific legal rights and you may also have other rights which vary from state to state.

3491 Mission Oaks Blvd. • PO Box 6009 • Camarillo, CA 93011 • (800) 444-3353