

1 AlertMe in your home

The Intruder Alarm

The Intruder alarm monitors the Motion Sensors and Door/Window Sensors when you are away from home and alerts you if anything happens.

Door/Window Sensors (x3) inform your AlertMe system whether doors or windows are open or closed. Each sensor has two parts, and you stick one on the door or window and one on the frame, so that they are close together when the door or window is shut. These are useful for checking that doors and windows are closed when you leave home.

Motion Sensors (x2) watch for people moving around in a room or area of your home. They are best positioned towards the top of a wall, pointing out into the room. They are the best way of detecting any intruder in your home.



The Emergency Alarm

The Emergency Alarm service uses **Alarm Detectors (x2)** to listen to your existing smoke alarms (or carbon monoxide alarms, or any other home alarms which make a loud siren or beeping). With an Alarm Detector installed next to each alarm in your home, your alarms become part of the AlertMe system, and you will be alerted if any of them go off.



The Fun Stuff

As well as the serious home safety and security service offered by AlertMe you also get a button and a lamp in your kit. New features using these accessories will be released over time. Check the website to find out what is available at the moment!

The Lamp (x1) makes the AlertMe wireless network in your home even more reliable. In addition, it's a funky, multi-coloured light which can be used for all kinds of things.



The Button (x1) is an internet-connected button, which like the Lamp, can be used in all kinds of ways. Maybe you'd like to use your Button as a doorbell or a panic button, or something else...



The Hub

The hub (x1) is the heart of AlertMe in your home. It connects to AlertMe 24/7 via your broadband (with a backup GPRS link). If your mains power goes out, it keeps working on backup batteries. It checks the Accessories in your home are working at all times and lets you know via our secure servers, if anything happens.

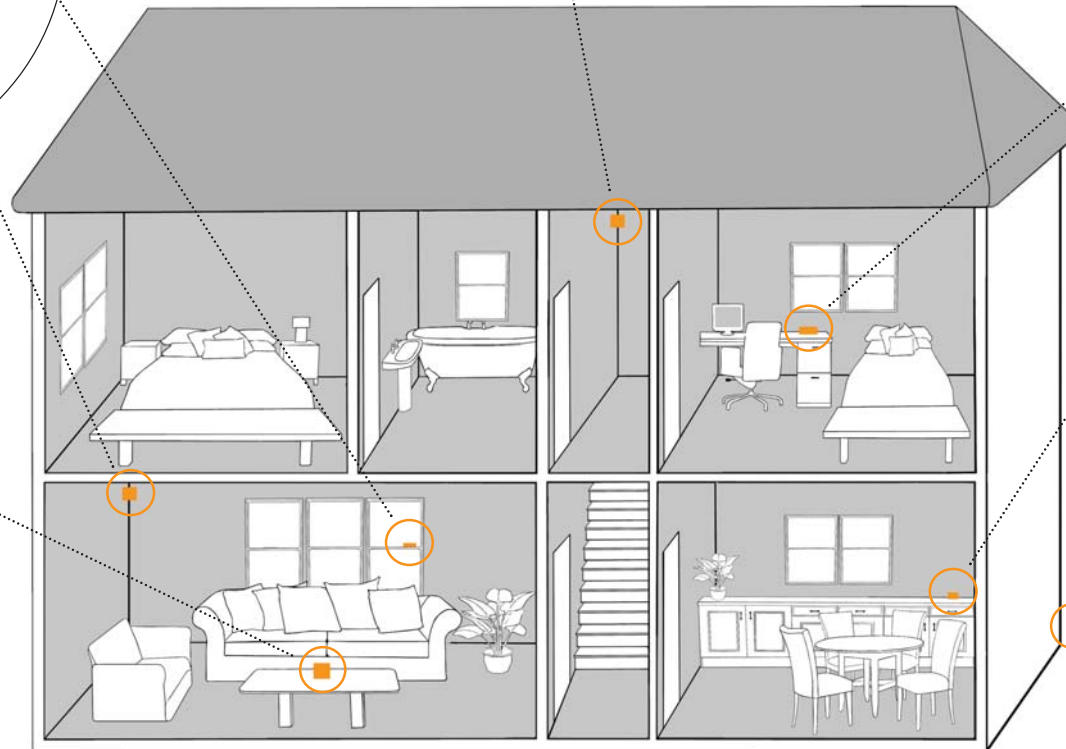


The Keyfobs

Each **Keyfob (x3)** has two buttons: *Home* (the big one) and *Away* (the little one), to blip your home when you leave and return home, just like blipping a car. This controls the Intruder Alarm (letting it know when to secure your home), and can also be used to cancel the Emergency Alarm if it goes off because you've burnt the toast.



AlertMe also uses Keyfobs to keep track of who is at home, and who is out. You can always check who is at home using the secure website.



Please turn over for instructions on how to install your alertme system.

You can also visit <http://help.alertme.com>

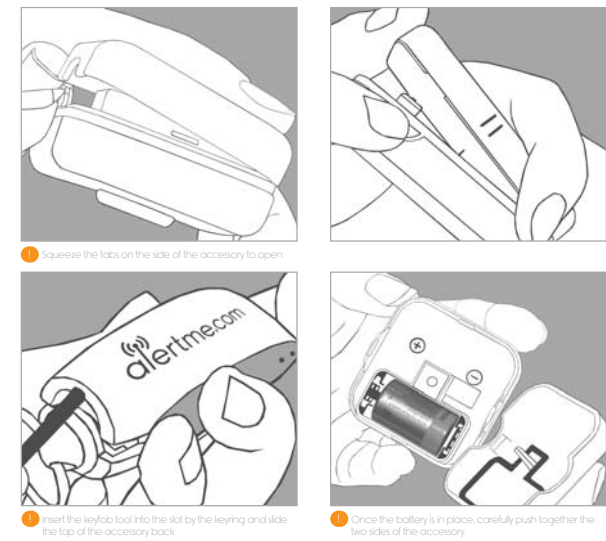
2 Unpack your kit. You will also need access to your broadband router and computer



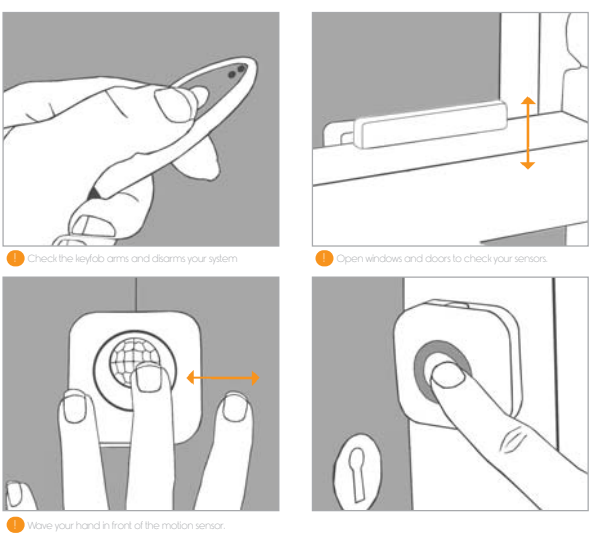
3 Plug your hub into your broadband router and follow the web instructions at alertme.com



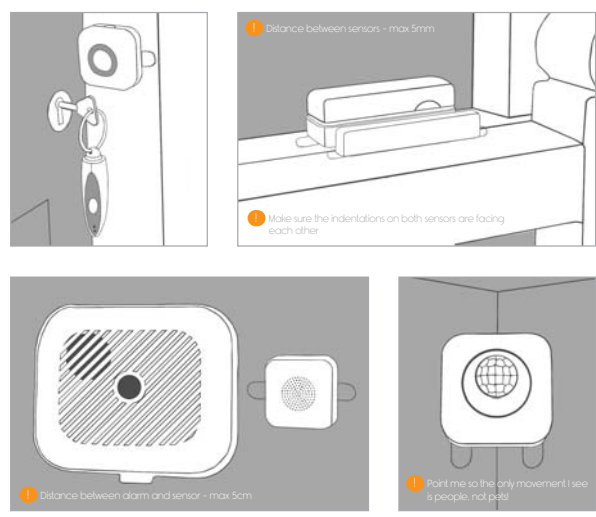
4 Plug in the lamp and insert batteries into the other accessories



7 Test your AlertMe system



6 Following the web instructions, place accessories around your home



5 Attach sticky pads to your accessories

