

To comply with FCC rules, adjustment or modifications of this receiver and/or transmitter are prohibited, except for changing the code setting or replacing the battery. THERE ARE NO OTHER USER SERVICEABLE PARTS.

The Security+ remote control (with blue push buttons) works only with rolling code door openers and light controls (with an orange SRT button and yellow indicator light). The code between the remote control and the receiver changes with each use, randomly accessing over 100 billion new codes.

Instructions are given below for programming your opener to match the remote control's code. The additional remote control buttons can also activate other Security+ garage door openers and/or light controls. (Instructions for programming light products are included with those accessories.)

SECURITY+ GARAGE DOOR OPENERS

Program the Opener to Accept the Remote Control Code

Select a remote control push button to operate the receiver. The *large* button is recommended for use with the garage door opener.

If you have a Premium Control Console:

1. With the door closed, press and hold the selected remote push button. See Figure 1.
2. Press and hold the Light button on the door control, Figure 2.

3. Press and hold the door control push button.

4. After the opener light flashes, release all buttons.

If you do not have a Premium Control Console:

1. Press and hold the selected remote push button. See Figure 1.
2. Press and release the SRT (learn) button on the opener panel. See Figure 3. The indicator light on the panel will begin to blink and the opener light will flash once.
3. Release the remote push button.

Now the opener will operate when that remote control button is pressed. Test it by pressing the remote button to see that the door goes up and down.

To Erase All Remote Control Codes

Press and hold the SRT button on the opener panel until the indicator light turns off (about 6 seconds). All remote codes are now erased. Then follow the steps above to re-program each remote control.

To Control the Opener Light (Premium Consoles)

With Security+ remote controls, a push button can be programmed to operate the opener light without opening the door.

1. With the door closed, press and hold the remote button that you want to control the light.
2. Press and hold the Light button on the door control.
3. Press and hold the Lock button on the door control.
4. After the opener light flashes, release all buttons.

Test by pressing the remote push button. The opener light should turn on or off but the door should not move.



WARNING

Children operating or playing with a garage door opener can injure themselves or others. *The garage door could close and cause serious injury or death.* Do not allow children to operate the door push button(s) or remote control(s).

A moving garage door could injure or kill someone under it. Activate the opener only when you can see the door clearly, it is free of obstructions, and is properly adjusted.

Figure 1

Select a push button to operate opener

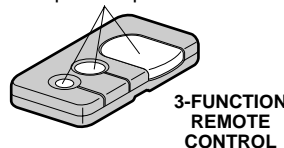


Figure 2

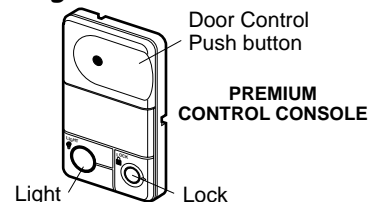
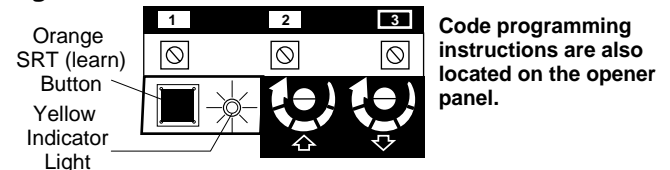


Figure 3



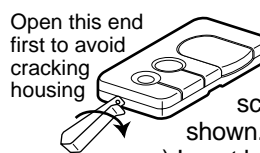
Code programming instructions are also located on the opener panel.



WARNING

Keep batteries away from small children. If swallowed, promptly notify doctor.

The Remote Control Battery



The lithium battery should produce power for up to 5 years. To replace the battery, use the visor clip or screwdriver blade to pry open the case, as shown. ("Open" location is stamped on back of case.) Insert battery *positive side down*. To replace cover, insert the 3 tabs at the opposite end and snap shut. Dispose of old battery properly.

Replacement Parts:

SECURITY+ 3-Function remote control housing only (no circuit board) – 41A5032; 3V 2032 Lithium Battery – 10A20; Visor Clip – 29B134.



When ordering parts, always provide the following information:

- Product Type
- Part Number
- Model Number
- Part Description

For the repair or replacement parts you need

Call 7 am – 7 pm, 7 days a week:

**1-800-366-PART
(1-800-366-7278)**