

INSTALL THE DOOR SENSOR

1. Use an alcohol wipe and clean area.
2. Position the door sensor vertically and attach to the top panel of the garage door with fastening strips (provided).

OR

Press in the bottom of the door sensor and remove the front cover. Position the door sensor vertically and attach to the top panel of the garage door with screws (provided). Replace the front cover.

PROGRAM THE DOOR SENSOR

1. Use the MyQ® App to add a new door sensor.

OR

1. Press and release **BUTTON 1** for door 1 or **BUTTON 2** for door 2 on the Wi-Fi hub. The yellow LED on the Wi-Fi hub will turn off when successfully programmed.
2. Press the Test button on door sensor until the yellow LED on the door sensor turns on.
3. Press the Test **BUTTON** again on the door sensor and the Wi-Fi hub will beep once for door 1 and twice for door 2.

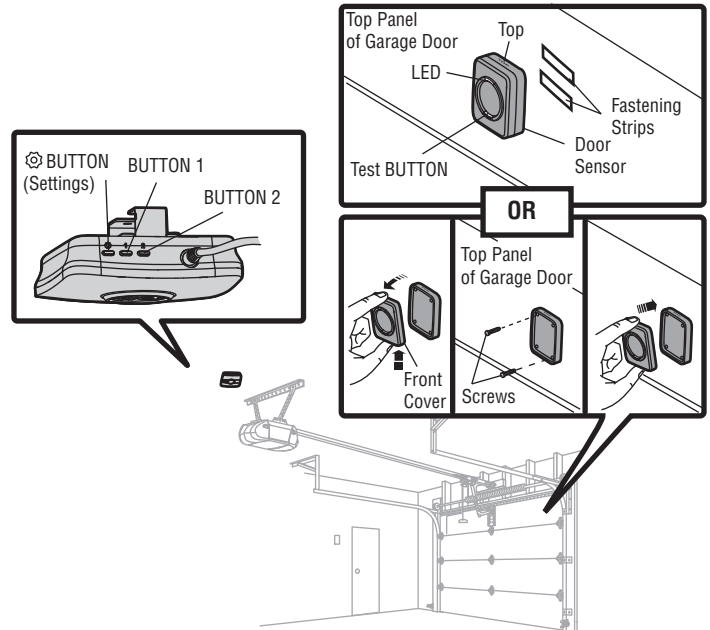
ONE YEAR LIMITED WARRANTY

Chamberlain, Inc. warrants to the first retail purchaser of this product that is free from defect in materials and/or workmanship for a period of 1 year from the date of purchase.

⚠ WARNING

To prevent possible **SERIOUS INJURY** or **DEATH** from a closing garage door:

- Activate door **ONLY** when it can be seen clearly, is properly adjusted, and there are no obstructions to door travel.
- **ALWAYS** keep garage door in sight until completely closed **NEVER** permit anyone to cross the path of closing garage door.



NEED HELP?

Go to the Help section at www.mychamberlain.com, or call Chamberlain Technical Support at 1-800-528-9131.

NOTICE: To comply with FCC and/or Industry Canada (IC) rules, adjustment or modifications of this transceiver are prohibited. **THERE ARE NO USER SERVICEABLE PARTS.** This device complies with Part 15 of the FCC rules and IC RSS-210. Operation is subject to the following two conditions: (1) this device may not cause harmful interference, and (2) this device must accept any interference received, including interference that may cause undesired operation.